

Towards personalised early prediction of Intra-Operative Hypotension following anesthesia using Deep Learning and phenotypic heterogeneity

Anna Tselioudis Garmendia^a, Ioannis Gkouzionis^{b,c}, Charalampos P. Triantafyllidis^{a,d}, Vasileios Dimakopoulos^b, Sotirios Liliopoulos^b, Marc Chadeau-Hyam^{a,*}

^aDepartment of Epidemiology & Biostatistics, School of Public Health, Imperial College London, W2 1NY, UK

^bAisthesis Medical IKE, Athens, GR

^cHamlyn Centre, Imperial College London, SW7 2AZ, London, United Kingdom

^dSchool of Computing and Mathematical Sciences, University of Greenwich, London, SE10 9LS, UK

Abstract

Intra-Operative Hypotension (IOH) is a haemodynamic abnormality that is commonly observed in operating theatres following general anesthesia with associated life-threatening post-operative complications. Here, we apply Deep Learning (DL) and more specifically Long Short Term Memory (LSTM) models across different patient groups for the classification of IOH events five minutes before onset, using Electronic Health Records (EHR) and time-series intra-operative data of 604 patients that had undergone colorectal surgery. K-means clustering was used to group patients based on pre-clinical data. As part of a sensitivity analysis, the model was also trained on patients clustered according to Mean arterial Blood Pressure (MBP) time-series trends at the start of the operation using K-means with Dynamic Time Warping. The baseline LSTM model trained on all patients yielded an Area Under the Curve (AUC) value of 0.83. In contrast, training the model on smaller sized clusters (grouped by EHR) improved the AUC value (0.85). Similarly, the AUC was increased by 4.8% (0.87) when training the model on clusters grouped by MBP. The encouraging results of the baseline model demonstrate the applicability of the approach in a clinical setting. Furthermore, the increased predictive performance of the model after being trained using a clustering approach first, paves the way for a more personalised patient stratification approach to IOH prediction using clinical data.

Keywords: Haemodynamic monitoring, intra-operative hypotension, colorectal surgery, preventive healthcare, personalised medicine, deep learning, predictive analysis, phenotypic heterogeneity

Introduction

Arterial hypotension is a highly prevalent haemodynamic abnormality that is commonly observed in patients undergoing surgery under general anesthesia (1, 2), and notably in colorectal surgery. This so called intra-operative hypotension (IOH), defined as Mean Blood Pressure (MBP) <65 mmHg (3), is linked to many causative factors such as age, comorbidity, type of anesthesia, and other vital measurements such as systolic blood pressure (SBP) (4, 5). In fact, anesthesia itself is thought to play a role in the occurrence of IOH. Anaesthetic agents, such as propofol, inhibit the sympathetic nervous system and impair the baroreflex regulatory mechanisms, both of which regulate blood pressure (6). If not promptly treated, the decline of MBP can cause severe adverse effects as this compromises local tissue perfusion and causes hypoxic conditions in vital organs (7). Among other considerations, this is thought to promote surgical site infection; a complication that is mostly

observed during colorectal surgeries (8). Additionally, an increasing number of studies reveal a link between IOH and other life-threatening complications, such as myocardial infarction and acute kidney injury. This ultimately translates into increased in-hospital length of stay and postoperative mortality and subsequent morbidity (9, 1).

Due to the complex pathophysiology underlying IOH, predicting such events while the patient is under anesthesia remains a challenge (10, 11). In the setting of a busy operating room, clinicians often have to manage the onset of IOH without additional warning. While standard patient monitoring devices measure instantaneous physiological signals, they do not model the underlying temporal dependencies. As a result, current systems cannot provide past trends or predictions of vitals and therefore cannot support decision making (12). Nevertheless, even a five minute time window warning of an imminent IOH event could lessen hypotension-associated postoperative complications (13), as it would allow anaesthesiologists sufficient time to proactively maintain the hemodynamic stability of the patient (e.g. by adjusting anesthetic agents, fluids

*Corresponding Author

Email address: m.chadeau-hyam@imperial.ac.uk (Marc Chadeau-Hyam)

NOTE: This preprint reports new research that has not been certified by peer review and should not be used to guide clinical practice.

ing has been expanded to include anesthesia data collected from different devices. Combined with the high-resolution physiological/pharmacological time-series data and EHRs of the patient, more data can be stored in real-time than ever before (14).

Despite the progress, the complex and large nature of such medical data makes it difficult for a human clinician to analyse, rendering artificial intelligence (AI) a valuable tool in the operating room. Supervised Machine Learning (ML) methods provide an opportunity to exploit large amounts of sequential data and are therefore increasingly utilized in training and analysing physiological time-series for prediction. Deep learning (DL) methods also represent an important alternative to assist clinicians as they can achieve a deeper understanding of the input data without the need of human interpretation (15, 16, 13, 17, 18). In the field of anaesthesiology, the development of algorithms predictive of intra-operative physiological alterations is showing encouraging results, often outperforming traditional modelling. If IOH can be accurately predicted, anaesthesiologists may then proactively search for possible causes to prevent severe complications and remedies.

Here, we propose a Long Short-Term Memory, LSTM (19), model to accurately classify IOH events 5 minutes ahead and provide an early warning risk score. To achieve this, the analysis uses EHR and physiological time-series data collected from 604 patients undergoing colorectal surgery under general anesthesia. We additionally investigate whether the predictive performance of the baseline model can be increased by training it on different categories (partitions) of patients that have been clustered together according to their clinical characteristics and intra-operative vitals. For instance, increasing evidence suggests that factors such as male sex, increased BMI and age, as well as the American Society of Anaesthesiologists (ASA) Physical Status score IV (subjective assessment of a patient's health before surgery) are linked to the occurrence of hypotensive events during colorectal surgery (1). Ultimately, the findings of this study aid in the development of a modelling framework for real-time anesthesia monitoring and prediction of IOH in the clinical setting, to avert associated post-operative complications and mortality.

Continuous arterial pressure monitoring, involving arterial catheterisation, is the most accurate intra-operative metric of hypotension. However, this established method is highly invasive for the patient. Patient physiological time-series data, defined as a collection of data points recorded at constant time intervals, represent an invaluable source of information that is under-exploited. Most of the studies for IOH prediction make use of such data by employing forecasting methods such as the Autoregressive Integrated Moving Average (ARIMA), a simple and stochastic traditional time-series model. As its acronym suggests, ARIMA relies on auto-regression, meaning that variables are regressed on their own past values, and a weight is applied to

lagging observations in order to forecast future time-series values according to their temporal nature and error terms. The word *integrated* refers to the removal of the stationary nature that usually characterises time-series data, while moving average indicates the lag of the forecast errors in the moving average model. However, this method performs poorly with long term forecasting, as it assumes a linear relationship between independent and dependent variables and only works with univariate analysis. These limitations render ARIMA unsuitable for real-world problems, characterised by complex non-linear mechanisms (20). Thus, more flexible models are considered.

A recent study (17) developed a hybrid Convolutional Neural Network (CNN) model, combining parameters extracted from invasive and non-invasive patient monitoring, for the real-time prediction of a IOH at 5, 10 and 15 minutes in advance using combined biosignal waveforms (acquired using one-point SBP/DBP, photoplethysmography, capnography and electrocardiography) may provide a more reliable prediction for patients than the more invasive arterial catheterisation. Another study aimed at predicting hypotensive events occurring between tracheal intubation and incision. To do so, the authors trained several machine learning models with data recorded from the start of anesthesia induction to right before intubation. By adopting a feature engineering approach, a Random Forest (RF) approach combined with feature selection showed the highest accuracy, followed by CNN and XGBoost (15). Similarly, (4) developed a prediction model for anesthesia-induced hypotensive events with the same time constraints. Again, RF outperformed all other models, including Naïve Bayes, RNNs and logistic regression. However, both studies focus on patients having undergone laparoscopic cholecystectomy, while neither account for intra-operative hypotension. In contrast, (1) hypothesised that different phases of hypotension during an operation have distinct causative mechanisms. Therefore, they distinguished hypotension at two phases: post-induction hypotension (PIH) and early intra-operative hypotension (eIOH). Multivariate logistic regression was subsequently used to find clinical factors independently related to PIH and eIOH, supporting the hypothesis of there being a temporal component to the causative mechanisms of hypotension. Furthermore, (21) attempted multiple ML algorithms using features extracted from EHR, with the aim of predicting PIH within 10 minutes of anesthesia induction. The best performing model in post-induction hypotension prediction was tuned gradient boosting (AUC=0.76), followed by RF (AUC=0.74). Although the definition of hypotension was stricter than in most studies (MAP <55 mmHg), a sensitivity analysis using the conventional threshold at 65mmHg showed an AUC reduced to 0.72 for the best performing model. Notably, the authors used EHR data, as opposed to intra-operative vital signs data (21). Furthermore, in (13), a weighted average ensemble of individual neural networks

was used to predict five-minute IOH arterial waveforms (as opposed to our non-invasive MBP recording variable used to train the models), which performed worse than our suggested approach (precision-recall curve (AUPRC) score at best 0.72). Additionally, the *Hypotension Prediction Index* (HPI) (22, 23, 24), an algorithm for the real-time prediction of hypotension, constitutes the first clinically available application of IOH prediction. The index uses ML models to continuously analyse multiple haemodynamic features, yielding a unit-less number ranging from 0-100 that indicates the likelihood of an imminent hypotensive event. Following model validation, the algorithm predicted hypotension with a sensitivity and specificity of 89% and 90% respectively, 10 minutes before the onset of hypotension (12). In order to increase precision, the authors opted for a binary classification algorithm, during the development of which periods of hypotension were arbitrarily defined as MBP <65 mmHg (>1 minute), whereas periods of non-hypotension were defined by MBP >75 mmHg, creating a *gray zone* for MBP (ranging from 65 to 75 mmHg). Furthermore, the model did not investigate hypotensive events occurring during anesthesia induction. Lastly, although the algorithm was trained on mixed ICU/operating room patient data, it was tested on surgical patient data (25). On a higher level, existing literature uses arterial pressure vital signals as a single data source, whereas IOH is also linked to other physiological alterations, such as respiratory patterns and ECG trends (17).

The motivation behind LSTMs, introduced by (19), was to mitigate the difficulty of RNNs to process long-term dependencies. To do so, LSTMs have *information gates*, allowing nodes to retain memory from relevant data while also forgetting unnecessary information to the final prediction (19). The architecture of a standard LSTM network is slightly more complex than the RNN, as it consists of a chain of repeating memory blocks (or nodes), each consisting of four layers. In brief, the forget, input and output gates update and control the memory cell via hyperbolic tangent and sigmoid activation functions. The information encoded in the new cell states allow the LSTM to capture long term dependencies and relations in sequential data, possibly rendering it the most effective DL algorithm for time-series analysis. Due to the aforementioned advantages of LSTMs over other algorithms, and the encouraging results of prior research in this field of study, this project implements such a model for the accurate classification and prediction of IOH events 5 minutes in advance during colorectal surgery.

To date, many algorithms depend on invasive arterial line wave-forms recorded using arterial catheters and pressure transducers, both of which are selectively performed on high-risk patients, therefore limiting the applicability of their approach. Most importantly, most models developed thus far do not consider the heterogeneity of the patient cohort used to train the algorithms. The need to develop IOH

predictive models tailored to specific patient phenotype is crucial, as it would significantly enhance their predictive performance and ultimately prevent the clinical complications of (and not limited) colorectal surgery. Thus a combination of DL and unsupervised learning (clustering) was considered. In this context, clustering can be used to stratify the patients and allow for more tailored and refined modelling. The diverse clinical characteristics of each patient play an important role in defining their risk of suffering from hypotensive events during a surgical operation. Due to this complexity, a simple and generic modelling technique might not be sufficient for the accurate risk prediction of IOH. This study investigates the effect of training the LSTM model on different clusters of patients, defined by their similarity in parameters such as BMI, age, type of anaesthetic drug administered (e.g., ephedrine), preoperative Na and hypertension.

Thus, this study also investigates the possibility of clustering patients according to their time-series MBP data at the beginning of the operation, in an attempt to improve the predictive performance of the LSTM model. Distance measures used in standard clustering algorithms are not appropriate for time-series as they are invariant to time shifts and ignore temporal dependencies. For instance, Euclidean distance yields pessimistic similarity measures when it meets alterations in the time axis. In other words, it is not capable of identifying the similarity between two time-series if one of them is slightly shifted in time, even if they are highly correlated. Instead, Dynamic Time Warping (DTW) is a time-series similarity measure that finds the optimal non-linear alignment between two time-series irrespective of their time, speed and length. For instance, given two time-series X and Y, DTW creates a wrapped path between each value in X and the closest point in Y, resulting in a sounder similarity assessment that minimises the Euclidean distance between aligned series (26).

Results

Following data pre-processing, 604 out of 1106 colorectal surgery patients satisfied the inclusion criteria and were therefore considered for the analysis, of which 378 cases experienced at least one event of IOH. Data characteristics of the complete dataset, as well as within those having suffered, or not, from hypotension are detailed in Table 1. Due to the time-series nature of the dataset, the table indicates the number of observations belonging to each category, rather than the number of patients. The mean age of the cohort was 62, with the hypotensive group being slightly older than the average. Additionally, these patients were characterised by significantly lower BMI and weight, known to be inversely associated with the risk of hypotension. As expected, the non-hypotensive group had a 12% increased MBP compared to the hypotensive group. The sex variable, deemed unimportant during feature se-

lection was dropped from the final dataset, and is thus not displayed in Table 1.

LSTM model

The univariate LSTM classification model was trained on 484 patients for the prediction of hypotensive events 5 minutes in advance, using 5 minutes of MBP data. Evaluation of the model performance on the test dataset yielded $AUC=0.831$ (Figure 2) and $AUPRC=0.225$ (Figure 3). The model calculates a vector containing a probability for every output segment Y of the test dataset. In other words, it predicts a risk score ($\in [0, 1]$) denoting the probability of a particular output segment Y being hypotensive. The closer the score is to 1, the higher the risk of that 1-minute-long segment having $MBP < 65\text{mmHg}$.

Three examples of cases from the test dataset were plotted for better visualisation of the output (Figure 4). The x axis represents the MBP of the patient, while the y axis represents the consecutive output segments Y generated by the time window method throughout the operation time. The vertical line at 65 mmHg denotes the threshold for IOH classification. The red line shows the true MBP of the patient at every output segment Y . The blue line can be interpreted as a warning score for the occurrence of hypotension at every output segment Y . As seen on the x axis on the right side of the plot, it is a probability plotted on a scale of $[0, 1]$. The higher the blue line, the bigger the risk of that segment being hypotensive. When both lines cross the 65mmHg bar threshold simultaneously, that area of the graph becomes shaded, indicating that those segments have correctly been predicted as hypotensive by the model.

Clustering

The optimal number of clusters to group 604 patients based on their pre-clinical information is 3 based on the *Elbow* index (Figure 5). Performing K-means clustering ($K=3$) provides the following partition: cluster 0 composed of 36 patients (5.96%), cluster 1 composed of 348 patients (57.6%), and cluster 2 composed of 220 patients (36.4%) (Table 2). In addition, a polar plot was used to visualise the separation between clusters across clinical features (Figure 8). As expected, the main feature driving the differentiation was *preop_htn*, a categorical variable defining whether a patient had hypertension prior to the surgical operation. As seen from Table 2, 100% of cases in cluster 2 had preoperative hypertension, whereas 100% of cases in cluster 1 did not. Nearly one-third (1/3) of cases in cluster 0 had had preoperative hypertension (30%).

Another important driving factor was ASA physical status score, with 37 out of 61 cases of class III belonging to cluster 2. Age also differed significantly among clusters, with a mean age of 59 years old being recorded for

cluster 1, compared to 65 and 67 for clusters 0 and 2 respectively. Based on the polar plot, it can be observed that cluster 0 has grouped the few cases that are characterised by lower preoperative levels of albumin, haemoglobin and a lower platelet count, in addition to the aforementioned differences in terms of ASA status score, age and BMI. Training the LSTM model on gave the following results: i) cluster 0 yielded an $AUC = 0.81$ ($AUPRC = 0.131$), ii) cluster 1 yielded an $AUC = 0.85$ ($AUPRC = 0.208$), and iii) cluster 2 yielded an $AUC = 0.822$ ($AUPRC = 0.254$). Hence, when LSTM is applied to a specific cluster of patients characterised by the absence of pre-operative hypertension (i.e., cluster 1), the AUC is increased with regards to the baseline model trained on the whole cohort at once.

Sensitivity Analysis

As part of a sensitivity analysis, the first 100 recordings of MBP were used to cluster 604 patients. The elbow plot resulted in $K=4$ as the optimal number of clusters to differentiate patients accurately. This result was also supported by performing *Silhouette* analysis for $K=4$, which yielded the highest score ($=0.30$). As seen in Figure 6, the plots are more or less of similar thickness (except for cluster 2 which is of slightly smaller size) and show above average *Silhouette* scores. The labelled scatter plot on the right verifies these findings and allows for a better visualisation of the clusters. Applying the K-means algorithm ($K=4$) to MBP time-series with Euclidean distance yielded a *Silhouette* score of 0.30, whereas using Dynamic Time Wrapping (DTW) resulted in a slightly higher DBA *Silhouette* score of 0.33. We also see in Figure 7 the time-series trends that characterise each cluster post-normalisation. The four clusters were composed of 169, 157, 92 and 169 patients respectively. Again, the LSTM model was separately trained on each of these clusters, with the resulting AUC and AUPRC being compared to the baseline model in Table 3. Cluster 2, characterised by sudden drop in the MBP during the last moments of the predefined ~ 3 minute period, yielded an AUC of 0.871 and AUPRC of 0.275. This represents a substantial increase in the predictive performance of the baseline model (which yielded $AUC=0.831$ and $AUPRC=0.225$ after being trained on 604 patients).

Discussion

General anesthesia of patients undergoing surgery is often accompanied by the serious haemodynamic abnormality that is IOH. Currently, no reliable methods exist in clinics to predict that a patient will suffer a hypotension during an operation, although several devices are used to continuously monitor the patient's vital signs in real-time. The existing need to minimise the post-operative complications of such events is what motivated this line of work in predicting the likelihood of a IOH events in patients

undergoing colorectal surgeries. Importantly, our analysis tried to set up more realistic conditions than previous and related work, to increase the applicability and generalisation of the model to different settings and patients and to allow for more tailored model training using unsupervised learning. For instance, we used intra-operative vital signs collected using common monitoring devices present in most operating rooms, as well as MBP time-series data recorded in a non-invasive manner.

An LSTM classification algorithm was trained on samples of MBP generated via the sliding window method. Using 5 minutes of MBP time-series data, the algorithm was capable of classifying an IOH event five minutes in advance (AUC=0.831). Although the algorithm was trained offline on pre-recorded time-series data, it could be used as a real-time prediction model for IOH in the operating room. By using the first five minutes of MBP data as input, the model would already be able to output the first IOH risk prediction score five minutes ahead. Running the model in an iterative fashion on input data using a one second step size would therefore yield a IOH risk score throughout the duration of the operation, similarly to how the model was tested on unseen patients. This risk score can greatly benefit anaesthesiologists who could be alerted of the proclivity towards an impending IOH event. As a result, clinicians could be given a substantial advantage in proactively treating the patient and averting the hypotensive event and the subsequent potential complications and Intensive Care Unit (ICU) stay.

Despite the encouraging results of this baseline predictive model, it is essential to better understand the different clinical phenotype of patients undergoing colorectal surgery to assess their risk of IOH. With the widespread adoption of EHR, much of this clinical data is already being collected and stored, but due to the expertise required to analyse it, it often remains underutilized. However, unsupervised machine learning offers the possibility to automatically identify underlying physiological patterns among a heterogeneous patient cohort. More precisely, unsupervised clustering techniques such as K-means can be used to automate the process of clustering patients according to their clinical characteristics, and evidently improve numerous ML models in predictive accuracy.

Thus, we trained the model on three clusters of patients that were different in the presence/absence of signs of preoperative hypertension, BMI, age, ASA physical status score, preoperative levels of haemoglobin, albumin and platelet count. Surprisingly, the type of anaesthetic agent used (e.g. propofol, rocuronium, ephedrine, fentanyl) did not influence patient clustering, which would have been interesting to investigate as these are known to influence IOH at different levels. All variables were selected via a thorough feature selection process according to their relevance in predicting MBP. Training the model on a particular cluster that has half the number of patients of the

original dataset increased the predictive performance of the model with an AUC=0.85 (2,4% increase). In fact, a recent study demonstrates that patients categorised as ASA physical status III and IV are more prone to suffering from haemodynamic abnormalities such as IOH, as these patients are more susceptible to the vasodilatory effects of anaesthetic agents (1). Additionally, platelet count and haemoglobin level are known to be positively associated with blood pressure, rendering these important determinants of IOH risk, as was also seen in our results (27). Lastly, patients showing signs of preoperative hypertension are obviously less likely to suffer from IOH, which explains why this is a major driving factor in patient grouping. The fact that clustering patients according to clinical characteristics showed increased predictive performance, even if this was only observed in a single cluster, is a promising finding. This shows that repeating the analysis on a significantly bigger cohort while introducing a larger number of features could help increase the *Silhouette* score i.e. better matching of patients to their own cluster yielding more similar/compact clusters. This process could offer a more tailored approach to new incoming patients, as they would get categorised using similarity metrics with previous cases. Thus, the appropriate pre-trained model could be used on each incoming patient instead of applying a generic model that ignores clinical phenotype heterogeneity. Ultimately, recognising patterns in the clinical data of patients could potentially lead to better IOH prediction and therefore better post-operative outcomes.

Another unexplored yet exciting approach consists in the grouping of colorectal-surgery patients based on the patterns observed in their MBP some minutes after being put under anesthesia. Interestingly, performing this type of clustering did again increase the predictive performance of the baseline LSTM model by as much as 4.8% (AUC=0.871). To do so, the K-means algorithm was used with DTW, which is deemed as more appropriate for time-series classification than the standard Euclidean distance. The *Silhouette* score was increased, although not substantially, potentially explained by the fact that the time-series were of the same length (i.e., 100 values long) due to the nature of the problem. Nevertheless, this finding opens new avenues for future research. If time-series clustering were to be performed on a bigger cohort, the resulting clusters would be even more dissimilar. During the start of the operation, the trends characterising the MBP of a new incoming patient would be indicative of the appropriate pre-trained LSTM model to use in order to predict IOH during the rest of the operation.

This study contributes to the endeavor of limiting post-operative complications by demonstrating that routinely collected EHR and easily accessible vital sign data can be used to produce a IOH risk score using the LSTM classification algorithm. Most importantly, it showcases the until now unacknowledged importance of classifying patients

according to their clinical characteristics as well as their trends in intra-operative time-series data, therefore opening new avenues of research the biomedical domain and precision medicine.

Furthermore, the association of IOH in combination with the presence of hypotension prior of operation and ICU admission has been demonstrated in Figure 9. Here, we calculated the percentage of time spent in hypotension during surgery and calculated the hazard probability against ICU stay stratified by the presence (or not) of the combinations of IOH and pre operation hypotension, using the relevant variables from the original dataset. More specifically, we engineered a new variable in the original dataset, that shows the percentage of the time during each patient's operation where $MBP < 65mmHg$. The plot shows that there is a statistically significant association ($p = 0.05$) of hypotension pre and during the operation with ICU admission. Surprisingly, patients that exhibit no hypotension prior of surgery but IOH, are in bigger risk of admittance to ICU versus patients who had presence of hypotension prior of surgery too. These findings further support the significance of the capability to predict hypotension during surgery to better pro-actively avert ICU admission.

Although our approach is highly promising, it comes with some limitations. Our analyses were centred on colorectal surgery, with the patient cohort naturally consisting of similar cases. Therefore, our study cannot be directly applied to other types of surgeries, as these use different anesthesia procedures and drugs; however, a similar framework can be used if trained on the appropriate dataset and the models were fine tuned as required. The applicability of the model is also limited by the fact that it was trained and tested on a single cohort extracted only over a 14-month period and derived from a single institution and population. It would be interesting to perform training and external validation on institutionally independent patient cohorts, as well as cohorts from different populations, in order to increase model performance and generalisation.

This study also has potential for real-time prediction of hypotension, but the data streams were not actually analysed in real time. In fact, we do not cover exactly how anaesthesiologists would act upon the risk score predicted by the model. This implies the need for the development of a decision-support tool that could suggest interventions or treatment alternatives according to the risk score calculated by the model, tailored for the type of surgery and severity of the event of interest.

Materials and Methods

We used publicly available data from *VitalDB* (28) (Vital Signs DataBase), published by Seoul National University Hospital and collected via the *Vital Recorder* (29), a software for the automated recording of time-synchronised

data. *VitalDB* includes high-resolution multi-parameter data of 6388 non-cardiac surgeries taking place between June 2016 and August 2017. The dataset integrates intra-operative vital sign recordings collected from several monitoring devices with preoperative EHR data of patients. Each operation type has unique features and complications correlated to the nature of it, and usually follows a common sequence from anesthesia induction to incision. Therefore, this study focuses on adult patients having undergone colorectal surgery under general anesthesia. These not only comprise a major part of the surgeries taking place globally each year, but also often report instances of IOH. Although using invasive BP measurements would result in higher prediction accuracy, since data is continuously recorded, this study focuses on predicting IOH based on signals acquired during routine non-invasive monitors to expand the applicability of the model. More precisely, only intra-operative data collected via the Primus (anesthesia machine) and the Solar8000 (patient monitor) were used in our analyses.

Although there is no universal definition for IOH, adverse effects usually start occurring below a MBP threshold of 65 mmHg. Therefore, we define hypotensive events as rhythm segments with an MBP $<65mmHg$ lasting for longer than 1 min, whereas non-hypotensive events are defined as those with an MBP $>65mmHg$ stable for longer than 1 min. Due to the nature of the analysis (probability estimate), it is essential to have two easily separable and mutually exclusive labels. The original dataset contains intra-operative vital sign data and perioperative clinical information of 1106 colorectal surgery patients. More specifically, it consists of 101 features including: 1) patient demographic data, such as age, gender, ASA status score, 2) preoperative medical comorbidities, such as cardiovascular and respiratory risks, 3) intra-operative medications, 4) intra-operative vital signs, such as arterial blood pressure, heart rate and oxygen saturation. Vital signs were recorded at different time intervals according to the monitoring device, with a frequency of 2 seconds for numeric data recorded with Solar8000, and a frequency of 7 seconds with Primus recorded vitals. In order to harmonize the vital signs sampled at different rates, the time interval was set at 2 seconds, which is the frequency at which non-invasive MBP, the main event of interest, was recorded. In case of a missing data-point due to time difference, it was replaced with the last encountered non-null value using backward filling.

The initial selection of 101 features was decided based on clinical judgement of factors that are most likely to induce IOH, although ML was subsequently used to ensure unbiased feature selection. Among these features, 13 were removed due to having $>80\%$ missing values. Out of the 1106 patients that underwent colorectal surgery, two were excluded for the same reason. Blood pressure measurements that were beyond the physiological range were excluded according to the following criteria: (1) MBP

<30mmHg or >200 mmHg, (2) SBP <50mmHg or >250mmHg, (3) DBP <20 or >160mmHg. In rare cases, some negative values were observed due to an error in the measuring equipment and were subsequently excluded, such as 61 negative values recorded using the Primus Positive end expiratory pressure (PEEP). Under-aged patients, as well as those having undergone a surgery lasting less than 2 hours were removed to obtain a more homogeneous cohort of patients with which to train the model.

We used correlation plots along with principal component analysis to identify highly correlated features. We merged the preoperative and intra-operative time-series datasets based on the patient ID, the EHR data was replicated for each instance of the patients' operation. Finally, we imputed the missing values of the vital signs via linear interpolation.

We performed feature selection to prevent over-fitting and increase model performance. More precisely, dimensionality reduction was decided upon the output of three feature selection strategies: mean decrease in Gini, Boruta, and lastly Recursive feature elimination (RFE) using a RF classifier. The Gini index is an ensemble learner based on randomised decision trees that measures the decrease in the impurity of the selected features as each tree branches. A higher decrease in mean Gini index is indicative of a variable that contributes more to the sorting and grouping of the target variable (MBP) to accurately classify IOH events. The Boruta algorithm is a wrapper method also trained on a random forest classifier. However, it does so on a shuffled copy of the original features, called shadow features, and applies a feature importance measure such as mean decrease in accuracy. The main idea of this approach is that instead of competing among themselves, the features are compared to a randomised version of them. All variables declared insignificant due to low feature importance were removed, and the model is repeated until all variables are classified based on the selection threshold (30). Lastly, Recursive Feature Elimination (RFE) is an automatic feature selection wrapper method that uses subsets of features to train the model and allows for the addition or removal of them. Using a prediction error, RFE selects a minimal set of variables needed for an accurate predictive model (4). Following the implementation of these feature selection strategies, a total of 36 variables that were deemed unimportant for IOH prediction were dropped from the dataset. Intra-operative anaesthetic medications were regarded as continuous variables indicating the dose administered, whereas the value was converted to 0 in the case of no data availability. All other variables were continuous except for the existence of preoperative diabetes, preoperative hypertension, and ASA physical status score, all of which were categorical.

These pre-processing steps culminated in a final dataset composed of 42 variables and 604 patients having undergone colorectal surgery, for each of which the operation

of 2.370.396 observations, each including the preoperative data (25 variables) and the intra-operative vital signs (17 variables) of a single second during the operation of each patient.

Data repository

All generated models and data are available upon request.

Acknowledgements

The authors wish to broadly thank the department of Epidemiology & Bio-statistics at the School of Public Health, Imperial College London, for the continuous support and feedback that helped improve this line of work.

References

- [1] S. Südfeld, *et al.*, *Br J Anaesth* **119**, 57 (2017).
- [2] J. J. Vos, T. W. L. Scheeren, *Indian Journal of Anaesthesia* **63** (2019).
- [3] B. E. Cooper, *AACN Adv Crit Care* **19**, 5 (2008).
- [4] A. R. Kang, *et al.*, *PLOS ONE* **15**, 1 (2020).
- [5] J. Bijker, *et al.*, *Anesthesiology* **116**, 658 (2012).
- [6] D. Tsikas, J. Jordan, S. Engeli, *British Journal of Clinical Pharmacology* **79**, 1030 (2015).
- [7] V. Salmasi, *et al.*, *Anesthesiology* **126**, 47 (2017).
- [8] R. Babazade, *et al.*, *Ann Surg* **264**, 1058 (2016).
- [9] L. Y. Sun, D. N. Wijeyesundera, G. A. Tait, W. S. Beattie, *Anesthesiology* **123**, 515 (2015).
- [10] A. Zhao, M. Elgendi, C. Menon, *Frontiers in cardiovascular medicine* **9**, 937637 (2022).
- [11] J. Castela Forte, *et al.*, *JAMA Network Open* **5**, e2237970 (2022).
- [12] F. Hatib, *et al.*, *Anesthesiology* **129**, 663 (2018).
- [13] S. Choe, *et al.*, *JMIR Med Inform* **9**, e31311 (2021).
- [14] H.-C. Lee, C.-W. Jung, *Sci Rep* **8**, 1527 (2018).
- [15] J. Lee, *et al.*, *Sensors* **20** (2020).
- [16] B. A. Fritz, *et al.*, *British Journal of Anaesthesia* **123**, 688 (2019).
- [17] S. Lee, *et al.*, *British Journal of Anaesthesia* **126**, 808 (2021).
- [18] F. Hatib, *et al.*, *Anesthesiology* **129**, 663 (2018).
- [19] S. Hochreiter, J. Schmidhuber, *Neural Computation* **9**, 1735 (1997).
- [20] R. Zhang, *et al.*, *PLOS ONE* **17**, 1 (2022).
- [21] S. Kendale, P. Kulkarni, A. D. Rosenberg, J. Wang, *Anesthesiology* **129**, 675 (2018).
- [22] K. Maheshwari, *et al.*, *Trials* **20**, 255 (2019).
- [23] K. Maheshwari, *et al.*, *Anesthesiology* **133**, 1214 (2020).
- [24] B. Shin, S. A. Maler, K. Reddy, N. W. Fleming, *J Cardiothorac Vasc Anesth* **35**, 1769 (2020).
- [25] J. J. Vos, T. W. L. Scheeren, *Indian J Anaesth* **63**, 877 (2019).
- [26] J. Paparrizos, L. Gravano, *SIGMOD Rec.* **45**, 69–76 (2016).
- [27] P.-C. Chiu, *et al.*, *Frontiers in Cardiovascular Medicine* **8** (2021).
- [28] H.-C. Lee, *et al.*, *Scientific Data* **9**, 279 (2022).
- [29] H.-C. Lee, C.-W. Jung, *Scientific Reports* **8**, 1527 (2018).
- [30] F. Degenhardt, S. Seifert, S. Szymczak, *Brief Bioinform* **20**, 492 (2019).

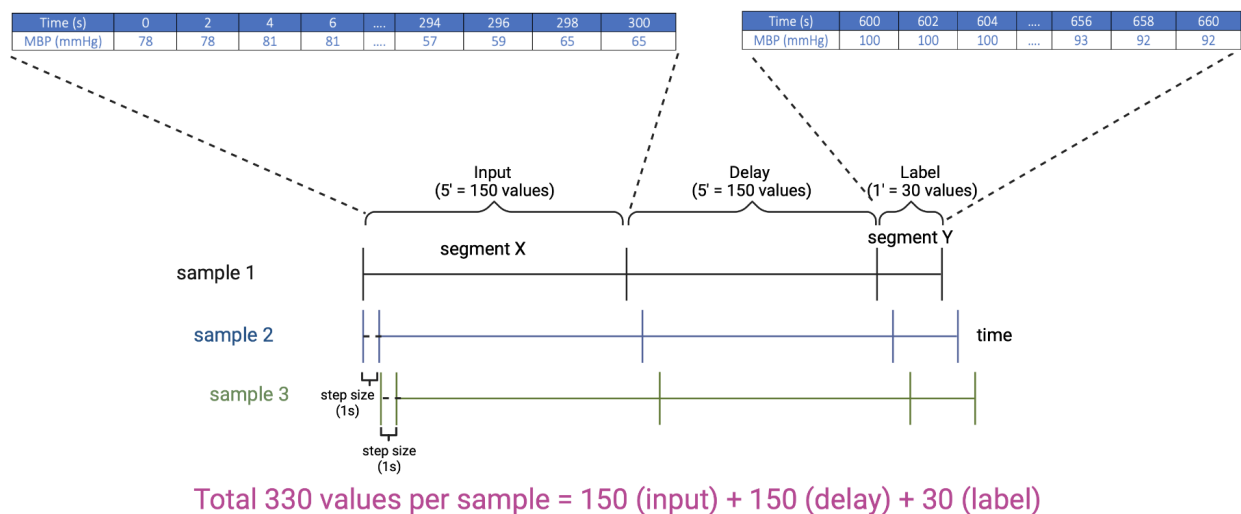


Figure 1: Sliding window method for the segmentation of time-series data

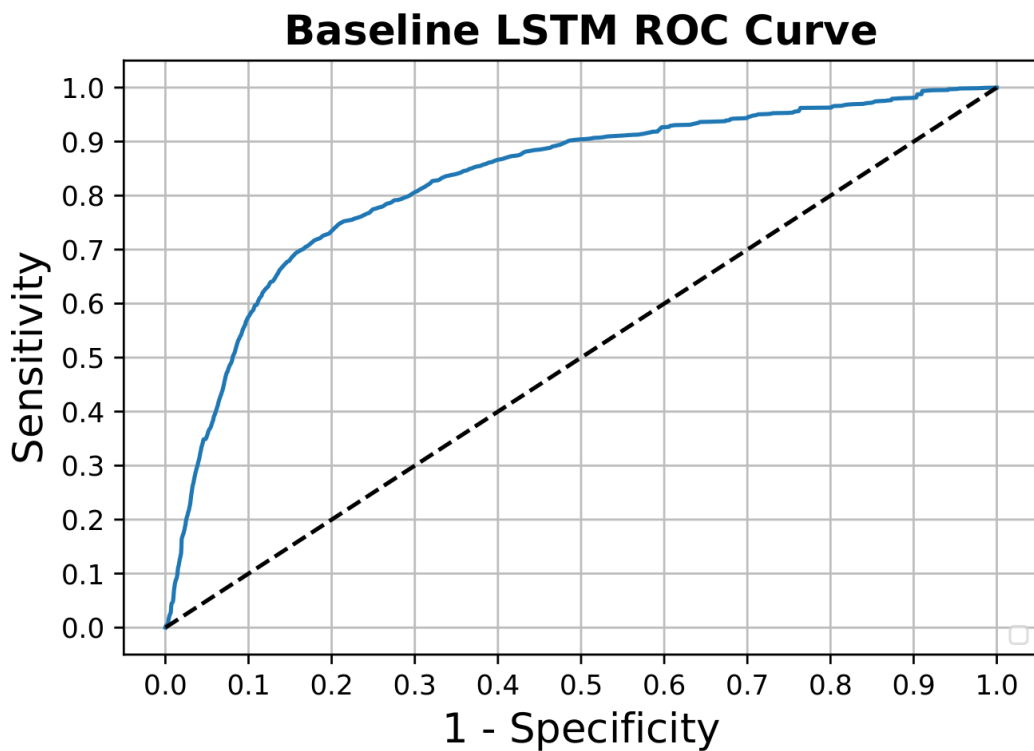


Figure 2: AUC-ROC plot for baseline model

Baseline LSTM PRC Curve

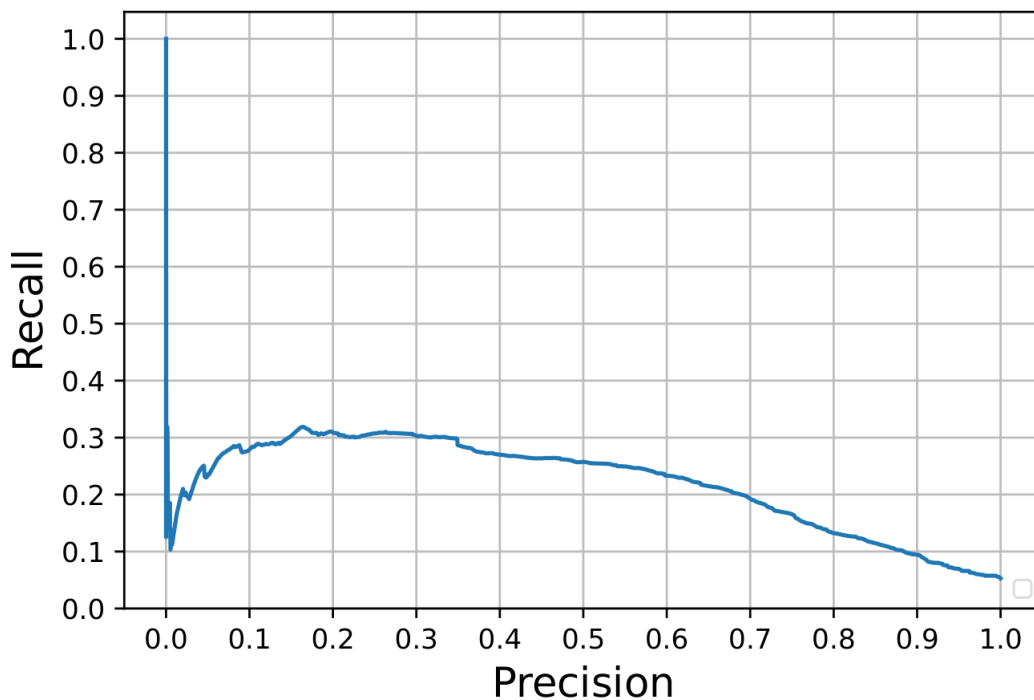


Figure 3: AUC-PRC plot for baseline model

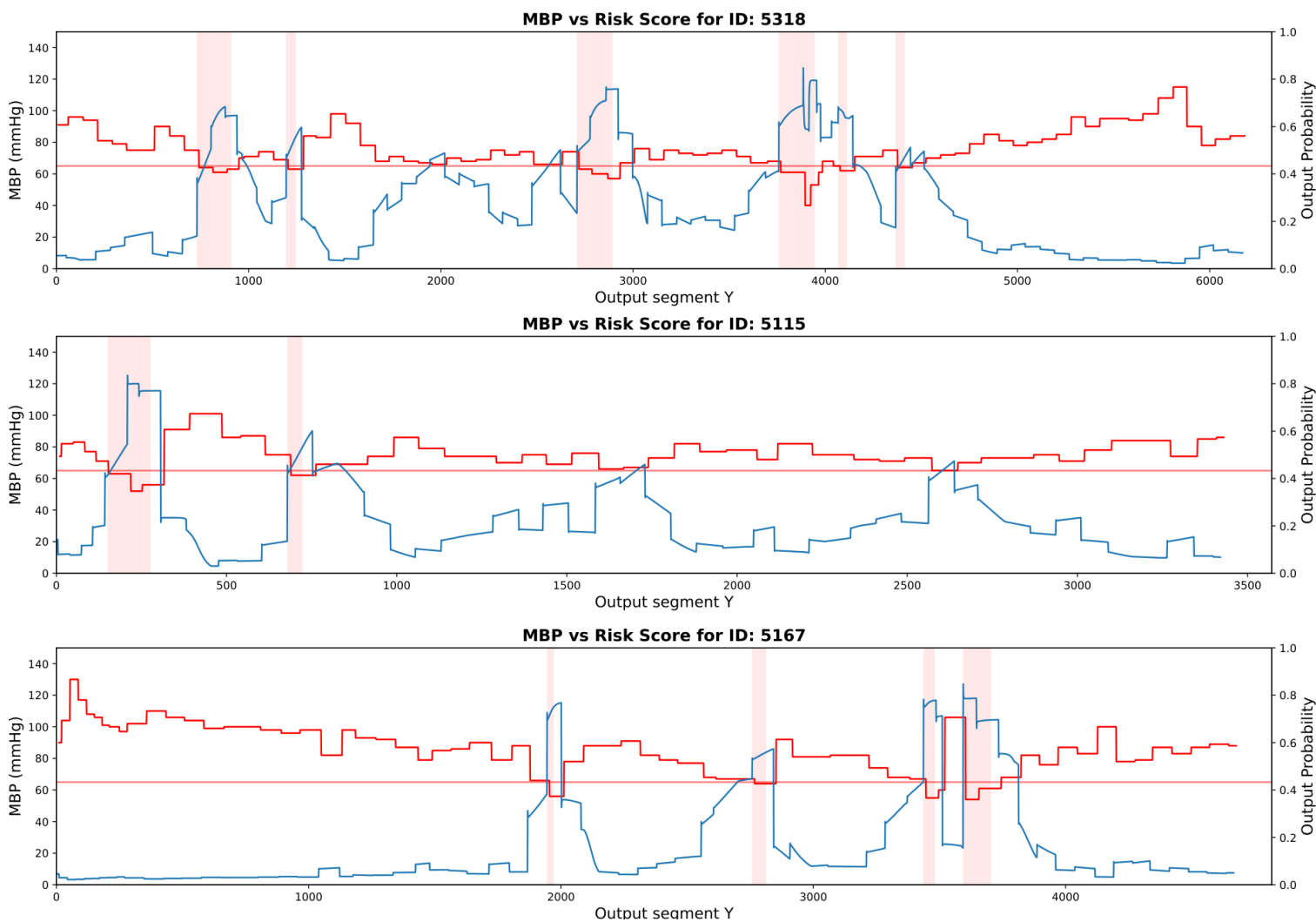


Figure 4: MBP vs Risk score plots for patients with case IDs: 5115, 5167 and 5318

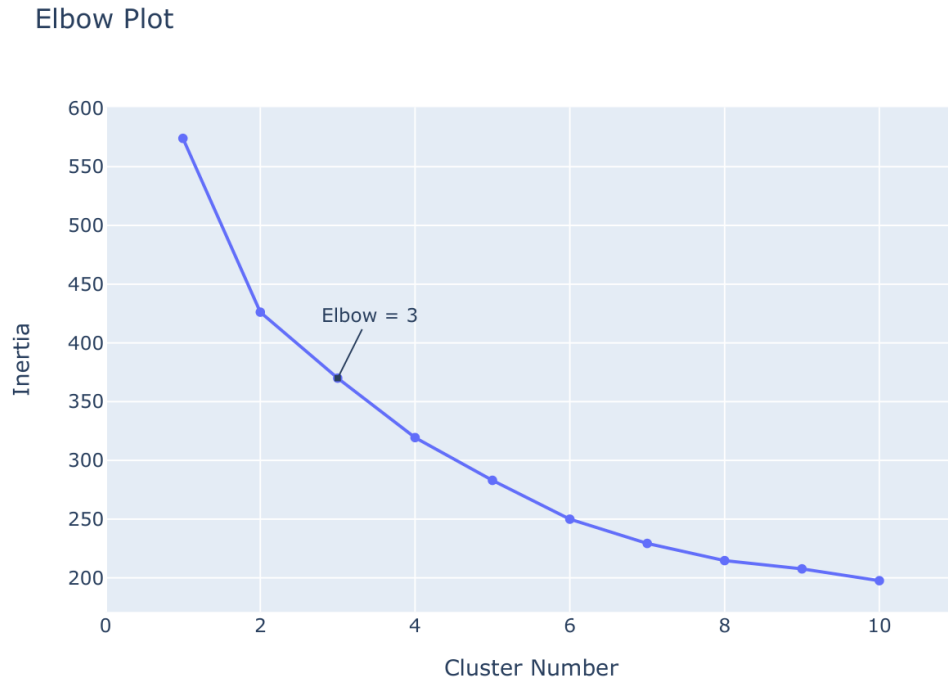


Figure 5: Elbow plot for K-means clustering

Silhouette analysis for KMeans clustering on sample data with n_clusters = 4

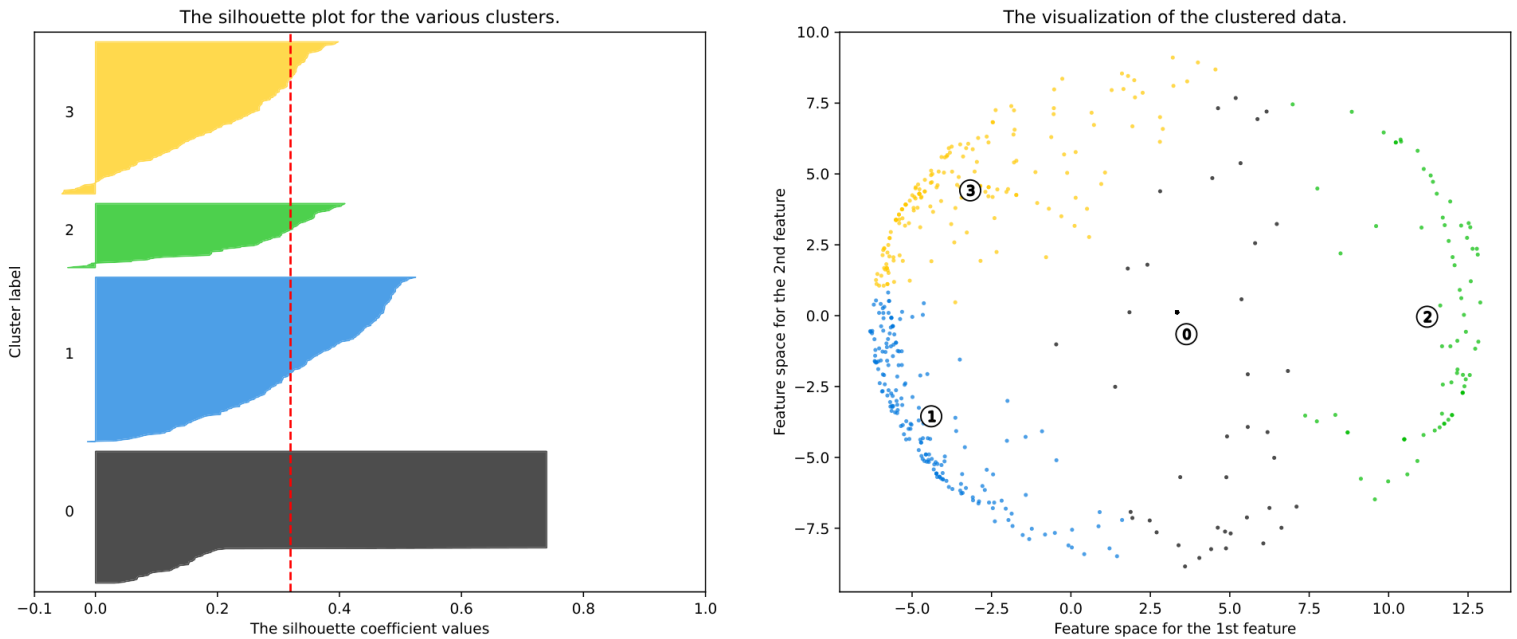


Figure 6: *Silhouette* plot (left) and scatter plot (right) for number of clusters=4

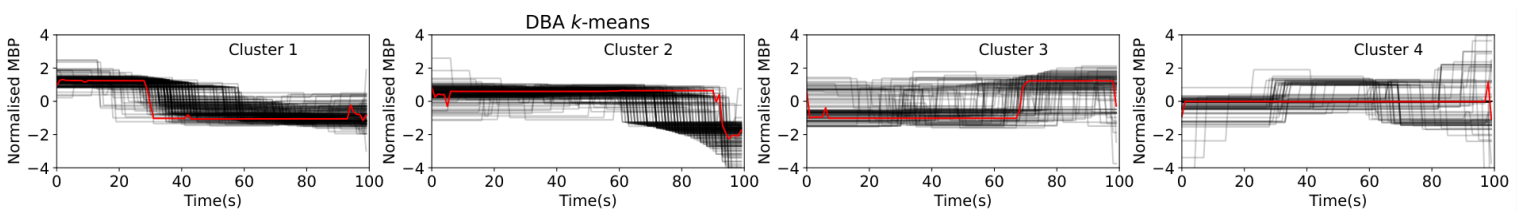


Figure 7: Plots of 100 first MBP values for each cluster in sensitivity analysis

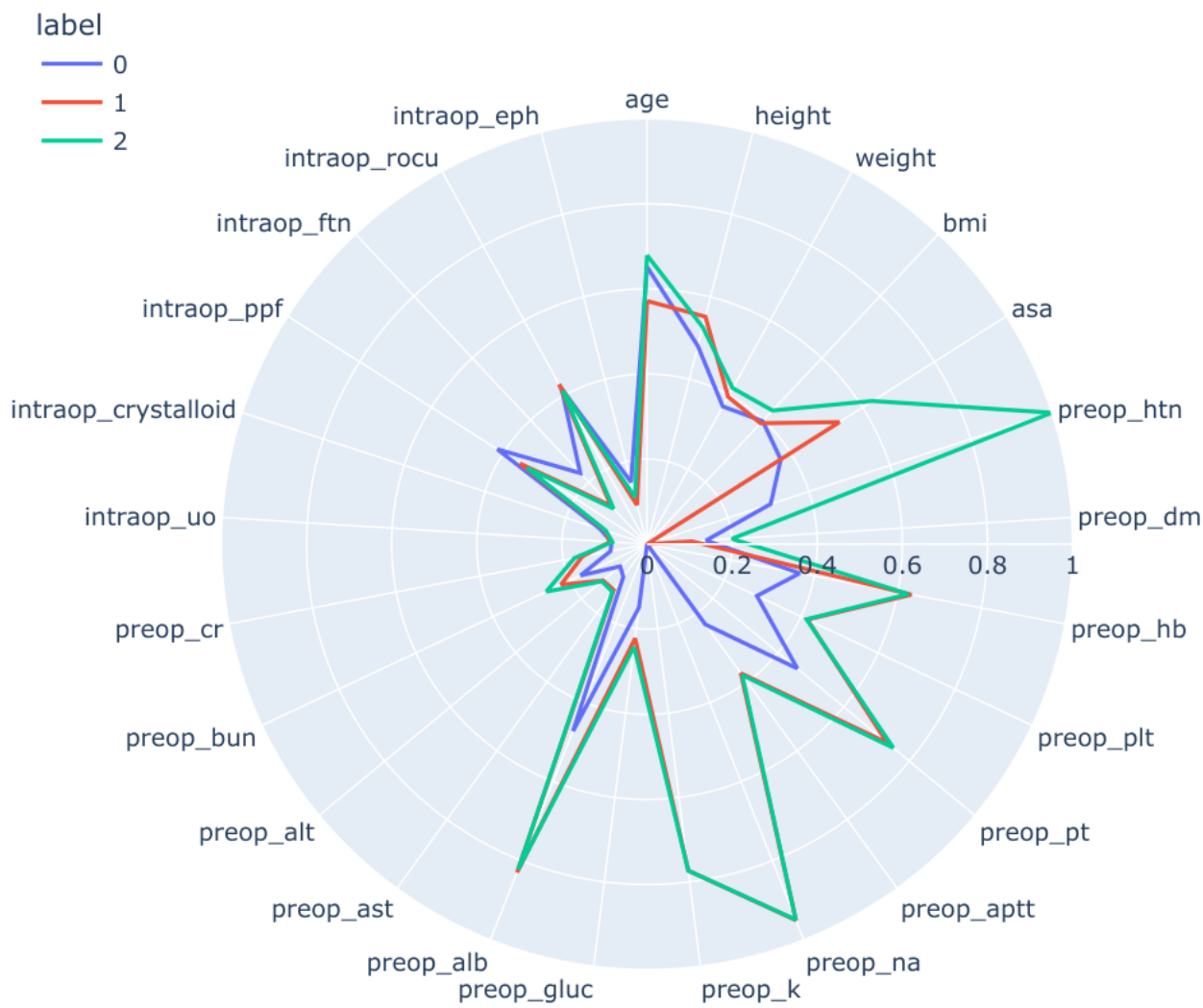


Figure 8: Polar plot for number of clusters =3

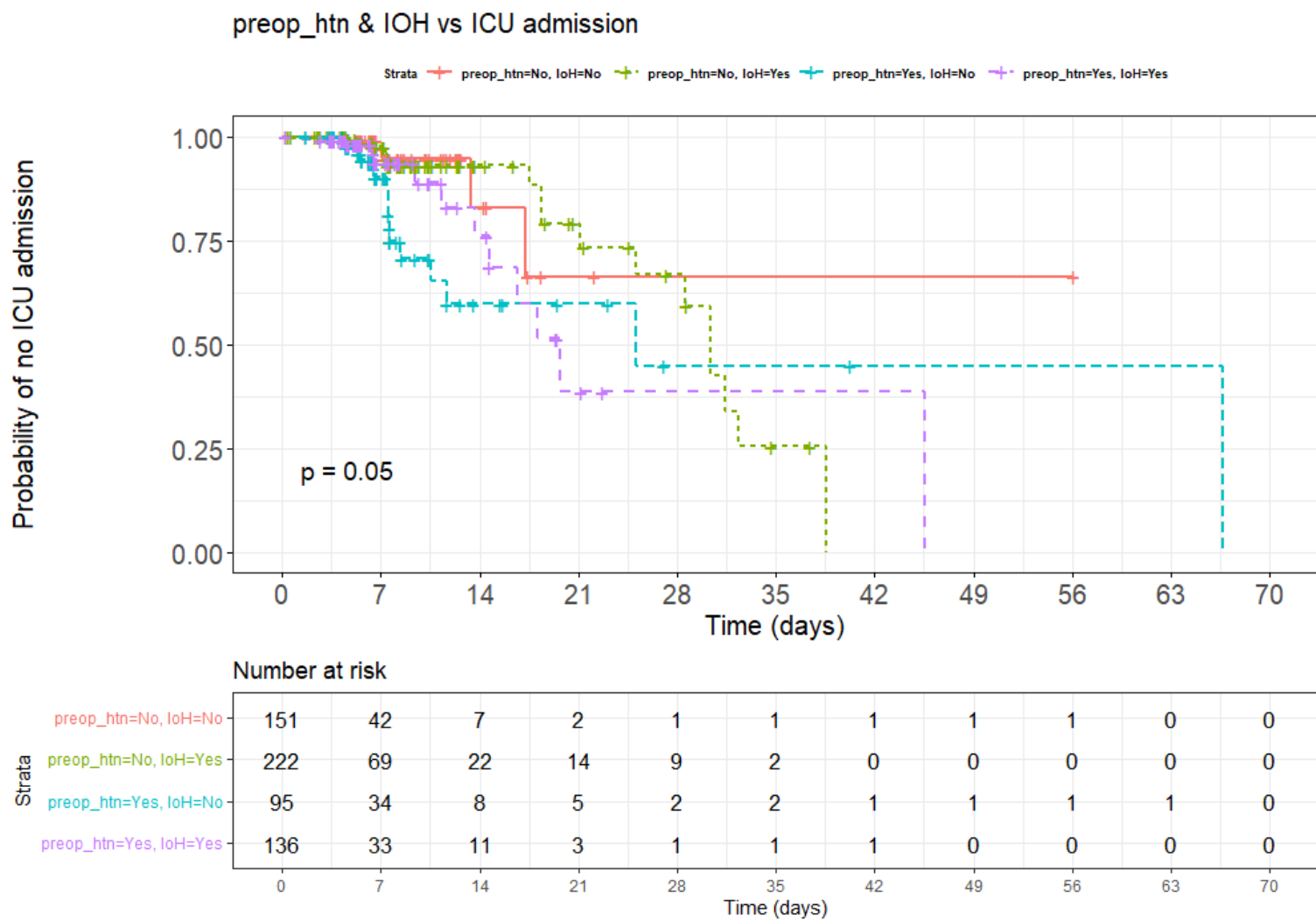


Figure 9: Association of ICU admission over IOH and pre-operation hypotension presence (discharge time in days)

	Grouped by Status (hypotensive/normal)			
	Overall	IOH	Normal	P-Value
Clinical data, mean (SD)				
N of observations	2370396 (=604 cases)	1733617 (=378 cases)	636779 (=226 cases)	
Age (years)	62.4 (12.0)	63.1 (12.3)	60.5 (11.0)	<0.001
Height (cm)	162.0 (8.5)	161.3 (8.5)	164.1 (8.3)	<0.001
Weight (kg)	60.5 (10.7)	59.5 (10.5)	63.3 (10.8)	<0.001
BMI (kg/m ²)	23.0 (3.4)	22.8 (3.4)	23.5 (3.5)	<0.001
ASA physical status, n (%)	1.0 641007 (27.0)	445737 (25.7)	195270 (30.7)	
	2.0 1521098 (64.2)	1160286 (66.9)	360812 (56.7)	
	3.0 170835 (7.2)	108610 (6.3)	62225 (9.8)	
	4.0 7051 (0.3)		7051 (1.1)	
Preoperative hypertension, n (%)	No 1482079 (62.5)	1078356 (64.4)	403723 (62.2)	<0.001
	Yes 888317 (37.5)	655261 (36.6)	233056 (37.8)	
Diabetes, n (%)	No 2041528 (86.1)	1500333 (86.5)	541195 (85.0)	<0.001
	Yes 328868 (13.9)	233284 (13.5)	95584 (15.0)	
Preoperative haemoglobin (g/dL)	12.1 (2.8)	11.9 (2.7)	12.6 (2.9)	<0.001
Preoperative platelet count (x1000/mcL)	259.6 (94.2)	260.6 (100.5)	256.8 (74.3)	<0.001
Preoperative PT* (%)	99.0 (20.1)	98.8 (20.4)	99.6 (19.5)	<0.001
Preoperative aPTT** (sec)	31.7 (6.7)	31.6 (6.4)	31.8 (7.3)	<0.001
Preoperative Na (mmol/L)	132.7 (32.7)	133.1 (32.0)	131.7 (34.6)	<0.001
Preoperative K (mmol/L)	3.8 (1.2)	3.8 (1.2)	3.8 (1.3)	<0.001
Preoperative Glucose (mg/dL)	114.9 (47.5)	116.1 (49.8)	111.7 (40.3)	<0.001
Preoperative Albumin (g/dL)	3.9 (0.8)	3.8 (0.8)	3.9 (0.9)	<0.001
Preoperative Ast*** (IU/L)	22.0 (13.8)	22.2 (15.0)	21.4 (9.7)	<0.001
Preoperative Alt**** (IU/L)	19.0 (15.0)	18.6 (15.3)	20.0 (14.3)	<0.001
Preoperative blood urea nitrogen (mg/dL)	14.1 (6.4)	14.2 (6.6)	13.8 (6.0)	<0.001
Preoperative Creatinine (mg/dL)	0.8 (0.8)	0.8 (0.7)	0.9 (0.9)	<0.001
Estimated blood loss (mL)	220.2 (484.2)	246.1 (552.3)	149.7 (188.6)	<0.001
intra-operative urine output (mL)	188.3 (215.0)	190.1 (225.4)	183.6 (183.7)	<0.001
intra-operative Crystalloid (mL)	1001.3 (935.3)	1036.3 (1022.6)	905.9 (630.0)	<0.001
intra-operative Propofol (mg)	47.9 (55.8)	44.6 (54.7)	56.6 (57.7)	<0.001
intra-operative Fentanyl, (mcg)	0 1717352 (72.5)	1285691 (74.2)	431661 (67.8)	<0.001
	100 546053 (23.0)	362069 (20.9)	183984 (28.9)	
	150 11212 (0.5)	6912 (0.4)	4300 (0.7)	
	200 27186 (1.1)	19348 (1.1)	7838 (1.2)	
	50 68593 (2.9)	59597 (3.4)	8996 (1.4)	
intra-operative Rocuronium (mg)	87.0 (23.9)	87.8 (24.8)	84.9 (21.1)	<0.001
intra-operative Ephedrine (mg)	10.5 (12.8)	13.1 (13.5)	3.5 (6.8)	<0.001
intra-operative vital signs with Primus, mean (SD)				
MAC***** (unitless)	0.4 (0.5)	0.4 (0.5)	0.5 (0.6)	<0.001

	Grouped by Status (hypotensive/normal)			
Positive End Exp. Pressure (mbar)	1.8 (2.4)	1.7 (2.4)	2.2 (2.5)	<0.001
intra-operative vital signs with Solar8000, mean (SD)				
Body temperature (°C)	33.8 (5.6)	34.0 (5.3)	33.3 (6.2)	<0.001
ETCO2 (mmHg)	33.4 (7.5)	33.6 (7.1)	32.8 (8.5)	<0.001
FEO2 (%)	38.9 (17.1)	38.4 (16.5)	40.4 (18.6)	<0.001
FIO2 (%)	44.3 (17.4)	43.8 (16.8)	45.7 (19.0)	<0.001
HR (/min)	71.2 (15.4)	71.6 (15.6)	70.2 (14.7)	<0.001
INCO2 (mmHg)	1.1 (1.5)	1.1 (1.5)	1.0 (1.5)	<0.001
Diastolic BP (mmHg)	69.8 (13.1)	67.5 (12.6)	75.9 (12.5)	<0.001
Mean BP (mmHg)	86.0 (16.9)	83.2 (16.2)	93.6 (16.2)	<0.001
Systolic BP (mmHg)	115.6 (23.2)	112.1 (22.3)	125.0 (22.9)	<0.001
Plethysmography recorded HR (/min)	71.6 (15.3)	71.9 (15.3)	70.9 (15.4)	<0.001
Plethysmography recorded SPO2 (%)	99.0 (1.9)	99.0 (2.0)	99.1 (1.8)	<0.001
Capnography recorded Resp. rate (/min)	13.8 (3.4)	13.8 (3.3)	13.7 (3.7)	<0.001
Ventilator recorded Mean Airway Pressure (mbar)	5.6 (2.8)	5.4 (2.7)	5.8 (3.0)	<0.001
Ventilator recorded Resp. rate (/min)	13.8 (4.0)	13.9 (3.9)	13.7 (4.3)	<0.001

Table 1: Population characteristics grouped by patients who experienced and did not experience IOH

Grouped by clusters						
Clinical data, mean (SD) n		Overall 604	0 36	1 348	2 220	P-Value
Age (years)		62.7 (12.1)	65.3 (12.8)	59.6 (12.4)	67.2 (9.9)	<0.001
Height (cm)		161.8 (8.7)	159.1 (8.5)	162.5 (8.6)	161.3 (8.6)	0.036
Weight (kg)		60.7 (10.9)	58.3 (12.4)	60.2 (10.9)	61.9 (10.6)	0.079
BMI (kg/m ²)		23.1 (3.5)	22.9 (3.7)	22.8 (3.5)	23.8 (3.4)	0.004
ASA physical status, n (%)	1.0	155 (25.7)	11 (30.6)	136 (39.1)	8 (3.6)	
	2.0	377 (62.4)	15 (41.7)	188 (54.0)	174 (79.1)	
	3.0	61 (10.1)		24 (6.9)	37 (16.8)	
	4.0	1 (0.2)			1 (0.5)	
Preoperative hypertension, n(%)	No	373 (61.8)	25 (69.4)	348 (100.0)		<0.001
	Yes	231 (38.2)	11 (30.6)		220 (100.0)	
Diabetes, n(%)	No	518 (85.8)	31 (86.1)	311 (89.4)	176 (80.0)	0.008
	Yes	86 (14.2)	5 (13.9)	37 (10.6)	44 (20.0)	
Preoperative haemoglobin (g/dL)		12.0 (2.9)	6.7 (6.5)	12.4 (2.1)	12.3 (2.2)	<0.001
Preoperative platelet count (x1000/mcL)		257.2 (92.9)	179.6 (143.7)	262.6 (84.3)	261.4 (90.2)	<0.001
Preoperative PT* (%)		98.0 (22.0)	61.8 (49.5)	99.3 (17.0)	101.9 (15.6)	<0.001
Preoperative aPTT** (sec)		31.7 (7.7)	19.7 (17.0)	32.3 (5.2)	32.8 (6.8)	<0.001
Preoperative Na (mmol/L)		132.1 (33.7)	-1.0 (0.0)	140.6 (2.9)	140.4 (2.7)	<0.001
Preoperative K (mmol/L)		3.8 (1.3)	-1.0 (0.0)	4.1 (0.4)	4.1 (0.4)	<0.001
Preoperative Glucose (mg/dL)		114.7 (48.6)	75.7 (58.0)	113.3 (43.2)	123.5 (51.8)	<0.001
Preoperative Albumin (g/dL)		3.8 (0.9)	1.8 (2.4)	4.0 (0.5)	3.9 (0.6)	<0.001
Preoperative Ast*** (IU/L)		22.1 (13.7)	15.5 (15.6)	22.1 (13.6)	23.1 (13.4)	0.009
Preoperative Alt**** (IU/L)		19.1 (15.2)	11.4 (13.5)	19.4 (14.8)	19.9 (15.8)	0.007
Preoperative Creatinine (mg/dL)		10.2 (9.3)		13.5 (5.0)	16.0 (8.2)	<0.001
Estimated blood loss (mL)		0.9 (0.9)	0.0 (0.9)	0.8 (0.5)	1.0 (1.2)	<0.001
intra-operative urine output (mL)		186.2 (206.5)	182.9 (197.9)	191.3 (195.1)	178.6 (225.3)	0.770
intra-operative Crystalloid (mL)		992.1 (909.9)	1113.0 (1125.1)	993.6 (886.1)	970.0 (911.3)	0.682
intra-operative Propofol (mg)		52.6 (56.3)	62.5 (56.7)	53.1 (56.7)	50.2 (55.8)	0.467
intra-operative Fentanyl, (mcg)	0	452 (74.8)	21 (58.3)	262 (75.3)	169 (76.8)	0.140
	100	128 (21.2)	13 (36.1)	71 (20.4)	44 (20.0)	
	150	3 (0.5)	1 (2.8)	2 (0.6)		
	200	7 (1.2)	1 (2.8)	4 (1.1)	2 (0.9)	
	50	14 (2.3)		9 (2.6)	5 (2.3)	
intra-operative Rocuronium (mg)		84.4 (24.1)	83.3 (30.4)	85.8 (23.3)	82.4 (24.3)	0.255
intra-operative Ephedrine (mg)		10.0 (12.2)	14.3 (20.7)	9.0 (11.1)	10.8 (11.9)	0.020

Table 2: Preoperative population characteristics grouped by clusters

Cluster	1	2	3	4	Baseline model
AUC	0.798	0.871	0.779	0.782	0.831
AUPRC	0.209	0.275	0.187	0.134	0.225

Table 3: Results from LSTM with Sensitivity analysis