

1 **Burden, Causation, and Particularities of long-COVID in African populations: A**  
2 **rapid systematic review**

3

4 Authors: Peter S. Nyasulu<sup>1,2\*</sup>, Jacques L. Tamuzi<sup>1</sup>, Rajiv T. Erasmus<sup>3</sup>

5

6 **Affiliations**

7 <sup>1</sup>Department of Global Health, Faculty of Medicine and Health Sciences,  
8 Stellenbosch University, Cape Town, South Africa

9 <sup>2</sup>School of Public Health, Faculty of Health Sciences, University of the  
10 Witwatersrand, Parktown, Johannesburg, South Africa.

11 <sup>3</sup>Division of Chemical Pathology, Department of Pathology, Faculty of Medicine and  
12 Health Sciences, Stellenbosch University & NHLS Tygerberg Hospital, Cape Town,  
13 South Africa

14

15 **\*\*Corresponding author:** Professor Peter Nyasulu. Division of Epidemiology and  
16 Biostatistics, Department of Global Health, Faculty of Medicine and Health Sciences,  
17 Stellenbosch University, Cape Town, South Africa. [pnyasulu@sun.ac.za](mailto:pnyasulu@sun.ac.za)

18

19

20

21

22

23

24

25 **Abstract**

26 **Background:** The global estimated prevalence of long COVID-19 is 43%, and the  
27 most common symptoms found globally are fatigue, confusion, or lack of confusion,  
28 and dyspnea, with prevalence rates of 23%, 14%, and 13%, respectively. However,  
29 long COVID still lacks an overall review in African populations. The aim of this review  
30 was to determine the prevalence of long COVID, its most common symptoms,  
31 comorbidities, and pathophysiological mechanisms.

32 **Methods:** A systematic review of long COVID in African populations was conducted.  
33 The random effects model was used to calculate the pooled prevalence rates (95%  
34 CI). If the results could not be pooled, a narrative synthesis was performed.

35 **Results:** We included 14 studies from 7 African countries, totaling 6,030 previously  
36 SARS-CoV-2 infected participants and 2,954 long COVID patients. Long COVID had  
37 a pooled prevalence of 41% [26%-56%]. Fatigue, dyspnea, and confusion or lack of  
38 concentration were the most common symptoms, with prevalence rates (95% CI) of  
39 41% [26%-56%], 25% [12%-38%], and 40% [12%-68%], respectively. Long COVID  
40 was associated with advanced age, being female, more than three long COVID  
41 symptoms in the acute phase, initial fatigue and dyspnea, post-recovery stress,  
42 sadness, and sleep disturbances, and loss of appetite at symptoms onset, mild,  
43 moderate, and severe, pre-existing obesity, hypertension, diabetes mellitus, and the  
44 presence of any chronic illness ( $P \leq 0.05$ ). According to our review, high micro clot  
45 and platelet poor plasma (PPP) viscosity explain the pathophysiology of long COVID.

46 **Conclusion:** Long COVID prevalence in Africa was comparable to the global  
47 prevalence. However, the prevalence of the most common symptoms was higher in  
48 Africa. Comorbidities associated with long COVID may lead to additional  
49 complications in African populations due to hypercoagulation and thrombosis.

50 **Key words:** Long COVID, prevalence, symptoms, comorbidities, pathophysiology,

51 African populations

52

53

54

55

56

57

58

59

60

61

62

63

64

65

66

67

68

69

70

71

72

73

74

## 75 **1. Background**

76 Post-Acute Sequelae of severe acute respiratory coronavirus 2 (SARS-CoV-2)  
77 (PASC), colloquially referred to as “long coronavirus disease (COVID)”, is a poorly  
78 understood condition characterized by prolonged COVID-19 symptoms and/or the  
79 development of new symptoms following the resolution of acute SARS-CoV-2  
80 infection. While there is still no formal clinical definition of long COVID, findings  
81 reported in individuals experiencing long COVID include general symptoms  
82 (tiredness or fatigue that interferes with daily life, symptoms that get worse after  
83 physical or mental effort (also known as “post-exertional malaise”), fever, respiratory  
84 and heart symptoms (difficulty in breathing or shortness of breath, cough, chest pain,  
85 fast-beating or heart palpitations, neurological symptoms (difficulty thinking or  
86 concentrating, headache, insomnia, dizziness, pins-and-needles feelings, change in  
87 smell or taste, depression or anxiety), digestive symptoms (Gastroesophageal reflux  
88 disease (GERD), diarrhoea, and stomach pain) and other symptoms  
89 (hyperlipidaemia, thromboembolism, kidney disorders, joint or muscle pain, rash and  
90 changes in menstrual cycles).<sup>1-4</sup> For example, National Institute for Health and Care  
91 Excellence (NICE) defined the "Long COVID" as "signs and symptoms that develop  
92 during/after the COVID-19 infection persisting for more than 4 weeks and could not  
93 be explained by any other diagnosis". In this categorization, the long COVID consists  
94 of two categories, "ongoing symptomatic COVID-19", which indicates the symptoms  
95 last for 4–12 weeks; and "post-COVID-19 syndrome", which means symptom  
96 persistence beyond 12 weeks.<sup>5,6</sup> Baig et al. suggested using the term "Chronic  
97 COVID syndrome (CCS)" as opposed to “Long-COVID” or “Long Haulers”.<sup>7</sup> He also  
98 presented an organ-based staging of the illness to prioritize immediate care needs.<sup>5,7</sup>

99 As of 21 December 2022, Africa recorded approximately 9.4 million confirmed  
100 COVID-19 cases accounting for just 1.45 % of 649,2 million global COVID-19  
101 confirmed cases<sup>8</sup>, despite containing 12.5% of the global population.<sup>9,10</sup> In Africa,  
102 the picture of long COVID is not well described as little research has been conducted  
103 in this emerging field. However, few studies have been conducted on the burden of  
104 long COVID in Africa, long COVID prevalence has been reported to vary across and  
105 within African countries. Dryden et al. reported the highest long COVID prevalence  
106 compared to other studies conducted worldwide.<sup>11</sup> However, a single study cannot  
107 reflect the prevalence of the African continent. While Peluso et al. concluded that  
108 HIV status strongly predicted the presence of long COVID.<sup>12</sup> Other studies found  
109 that diabetes, cardiovascular disease, and female sex were all linked to long COVID.  
110<sup>13,14</sup> Given the high prevalence of these comorbidities on the African continent, an  
111 overall study focusing on African populations is required. We determined the burden  
112 of long COVID, prevalent symptoms, key findings, risk factors, and plausible  
113 pathophysiology in African populations in this review.

## 114 **2. Methods**

115 This section covers study selection strategy, study design, eligibility, inclusive and  
116 exclusive criteria, and quality of assessment and synthesis.

### 117 **2.1. Study selection strategy**

118 To ensure the reproducibility and transparency of our findings, studies were selected  
119 for systematic reviews (from January 2020 to December 2022) in accordance with  
120 the Preferred Reporting Items for Systematic Reviews and Meta-Analyses (PRISMA)  
121 guidelines.<sup>15</sup> The studies were chosen based on the following key review research  
122 questions: How prevalent is long COVID in African populations? What are the most

123 prevalent long COVID symptoms in African populations? What factors and  
124 comorbidities are associated with long COVID in African populations? To respond  
125 these questions, we searched PubMed, Medline, Google Scholar, the WHO COVID-  
126 19 Research Database, medRxiv, and bioRxiv for potential studies on long COVID-  
127 19 in African populations, employing the following MESH terms and key words as the  
128 search strategy: “Post-Acute COVID-19 Syndromes” OR “Long Haul COVID-19” OR  
129 “Long COVID” OR “Post-Acute Sequelae of SARS-CoV-2 Infection” OR “Post-  
130 COVID Conditions” OR “Post-COVID Condition” OR “Long-Haul COVID” AND  
131 “Comorbidities” AND “epidemiology” [Subheading] OR “Burden of Disease” AND  
132 “African populations” OR “African people” OR “Africans”. Only English-language  
133 studies were considered. To remove duplicates, studies were imported into the  
134 Endnote online tool. The authors took a step-by-step approach, beginning with  
135 systematic reviews. The remaining abstracts were screened by one reviewer, and all  
136 excluded abstracts were screened by another. One reviewer screened all full-text  
137 papers, and a second screened those that were not. When necessary, a third  
138 reviewer was brought in. One reviewer (JLT) extracted the data, and another (PSN)  
139 double-checked it. The study ID, setting, population, long COVID prevalence,  
140 comorbidities, and statistically significant findings were all included in the data. The  
141 Newcastle-Ottawa Scale (NOS) risk of bias assessment was used to evaluate the  
142 study's quality.<sup>16</sup>

143

## 144 **2.2. Study design eligible inclusion and exclusion criteria**

145 We only included studies that looked at long COVID prevalence, symptoms,  
146 associated comorbidities, and other important findings in African populations. This  
147 review included people of all ages. We also included African studies on COVID

148 symptoms that persisted. Furthermore, studies on asymptomatic COVID-19 and  
149 those assessing COVID recovery time were excluded from this review.

### 150 **2.3. Data extraction and synthesis**

151 We created a data extraction table to collect information related to the research  
152 questions. However, data were extracted for the four most common long COVID  
153 symptoms. Data extraction was completed by one reviewer (JLT) and independently  
154 checked by a second reviewer (PSN), with discrepancies resolved through  
155 discussion. Only evidence directly relevant to the review question was extracted. The  
156 data included in the meta-analysis, primarily long COVID prevalence and the four  
157 most common symptoms, were extracted into an Excel spreadsheet and the effect  
158 sizes (ES) and standard errors were calculated. Long COVID prevalence was  
159 calculated for each included study by dividing the total number of SARS-CoV-2  
160 infected patients by the total number of long COVID. The number of COVID-19  
161 patients with symptoms divided by the total number of long COVID patients yielded  
162 the prevalence for each long COVID symptom.

163 A meta-analysis was performed for long COVID prevalence and the four most  
164 common symptoms. According to the Cochrane handbook<sup>17</sup>, the prevalence rates  
165 were pooled using the random effects model because we expected significant  
166 heterogeneity ( $I^2 > 50\%$ ). Subgroup analyses based on setting and long COVID were  
167 performed a priori. For small sample studies, Egger's regression and Begg's tests  
168 were used to assess publication bias. The P-value for statistical significance was set  
169 at 0.05 for all analyses. Stata (V.16, Stata Corp, College Station, Texas, USA) was  
170 used for the meta-analysis. Comorbidities and key findings were summarized in a  
171 narrative format.

172

173

174

### 175 3. Results

176 The databases yielded 453 articles, 39 duplicates were removed, and 414 titles and  
177 abstracts were screened for eligibility. 387 records were excluded because they  
178 were unsuitable for the review. Full texts were obtained for the 27 studies, but 13  
179 were excluded because two were protocols, nine were reports, and two were letters  
180 to the editors. Then, 14 studies were included in our analysis, with 9 included in the  
181 meta-analysis and 5 included in the narrative synthesis. The review flow chart is  
182 shown in Figure 1.

183

184

185

186

187

188

189

190

191

192

193

194

195

196

197

198

199

200

201

202

203

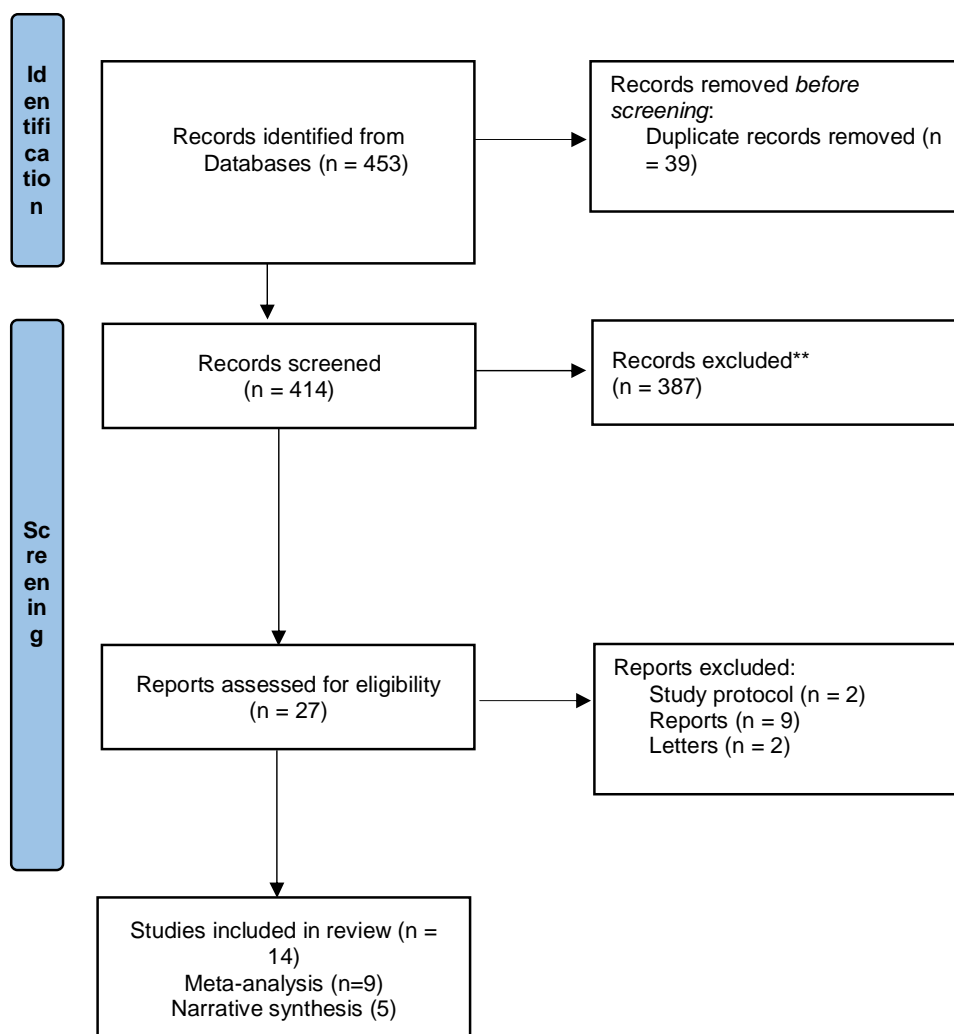
204

205

206

207

208





209  
210  
211  
212  
213  
214  
215  
216

In  
cl  
ud  
ed

**Figure 1:** Flow chart of studies reviewing long COVID in African populations

### 3.1. Study and participant characteristics

217 Fourteen studies were included in this review. Among them, five were case control  
218 studies conducted in South Africa and Morocco<sup>18-22</sup>, three retrospective cohort  
219 studies undertaken in Nigeria and South Africa<sup>23-25</sup>, two prospective cohort studies  
220 (South Africa and Zambia)<sup>11,26</sup>, two retrospective cross-sectional studies done in  
221 South Africa and Egypt<sup>27,28</sup> and two cross-Sectional studies undertaken Ghana and  
222 Egypt<sup>29,30</sup>. This review included a total of 6, 030 previously SARS-CoV-2 infected  
223 participants and 2,954 long COVID patients. Seven studies reported that long  
224 COVID was prevalent among females.<sup>11,18,20,25-29</sup> In contrast, three studies high  
225 prevalence rates among males.<sup>23,24,30</sup> Long COVID range of age was 1 to 85  
226 years.<sup>11,18,19,22-24,27,28,30</sup> Methodological quality of the included studies was reported in  
227 Supplementary file 1.

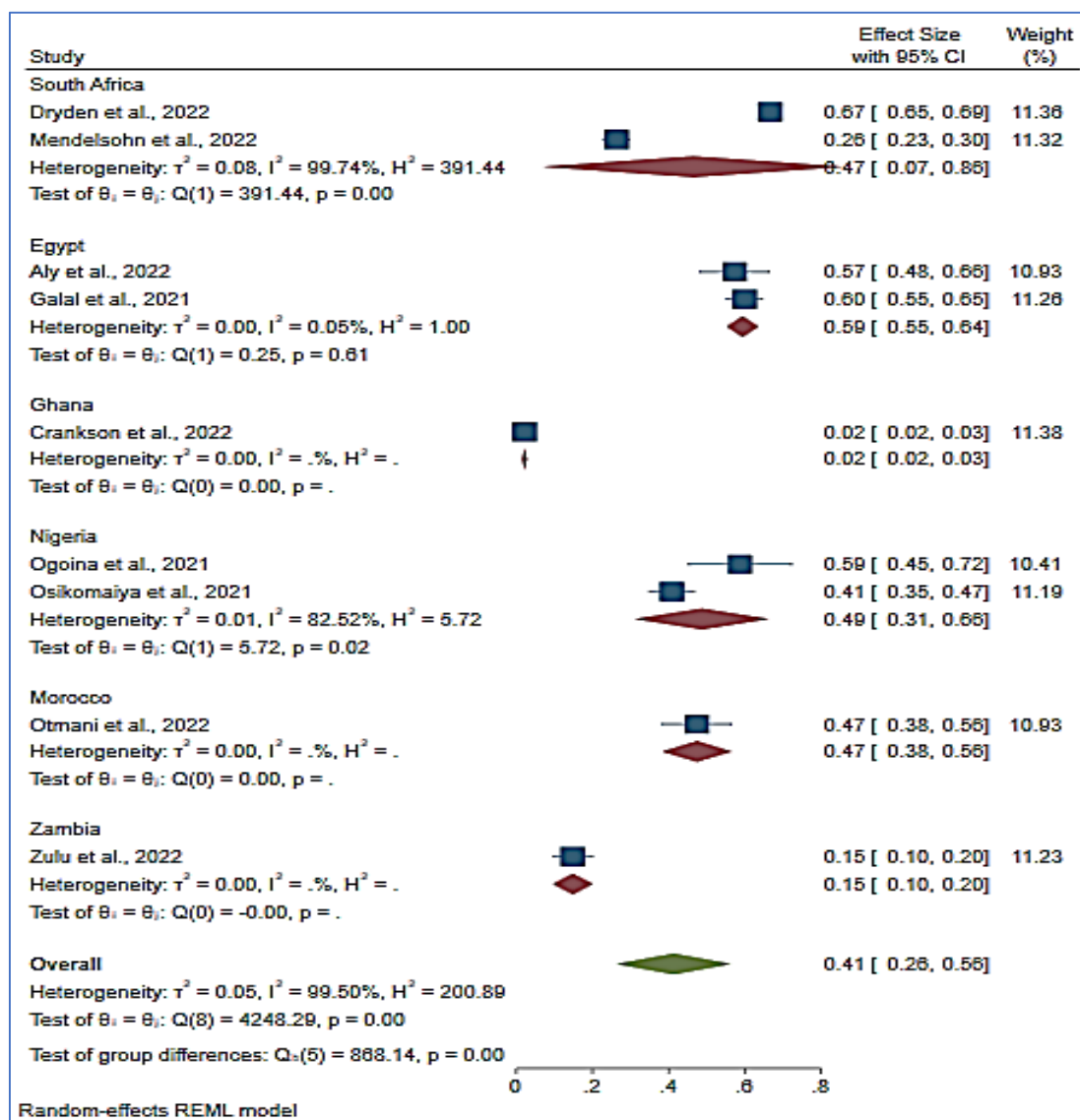
### 3.2. Meta-analysis

228  
229 The pooled results of long COVID prevalence (95% CI) in African populations  
230 revealed a 41% [26%-56%] overall prevalence (**Figure 2**). This prevalence, however,  
231 varied significantly across studies conducted in different African countries. Egypt had  
232 the highest prevalence, at 59% [55%-64%] (**Figure 2**). Nigeria had a prevalence rate  
233 of 49% [31%-66%]. (Figure 2). South Africa, Morocco, and Zambia had prevalence  
234 rates of 47% [7%-86%], 47% [38%-56%], and 15% [10%-20%], respectively (**Figure**  
235 **2**). Ghana had the lowest prevalence of 2% [2%-3%] (**Figure 2**). The degree of  
236 heterogeneity between studies was high, with  $I^2 = 99.5\%$ .

237 The prevalence of the most common long COVID symptoms in African populations  
238 was assessed in **Figure 3**. According to the pooled prevalence, fatigue, dyspnea,  
239 and confusion or lack of concentration were the most common and prevalent long  
240 COVID symptoms among African populations. Fatigue, dyspnea, and confusion or  
241 lack of concentration were all prevalent (95% CI) at 41% [26%-56%], 25% [12%-  
242 38%], and 40% [12%-68%], respectively (**Figure 3**). A study of 845 long COVID  
243 participants found that fatigue, brain fog, loss of concentration and forgetfulness,  
244 dyspnea, and joint and muscle pains were the most common symptoms in African  
245 populations (**Table 1**). However, due to missing data, we were unable to include this  
246 in the meta-analysis.

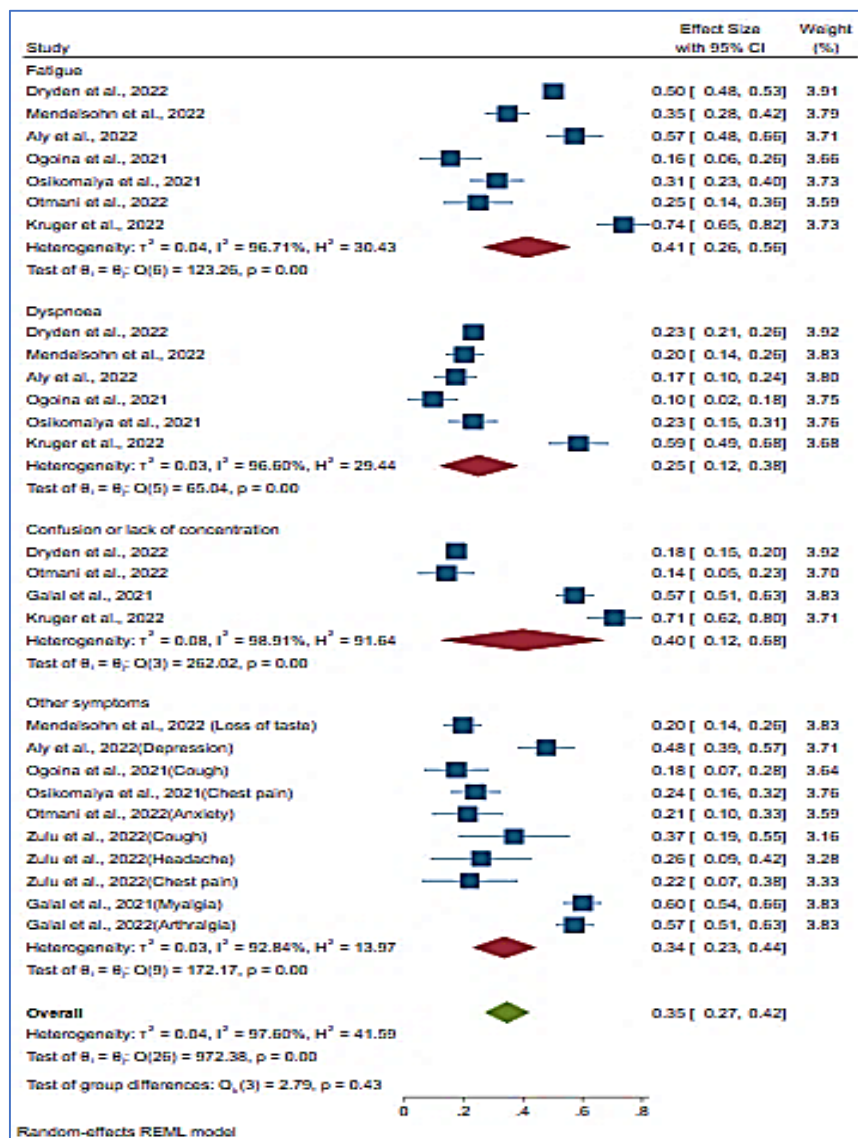
247 Other common symptoms were arthralgia, myalgia, depression, chest pain,  
248 headache, anxiety, and cough (**Figure 3**). Even though the test of heterogeneity  
249 between studies was high ( $I^2 = 97.60\%$ ), the test of group difference was not  
250 statistically significant ( $P = 0.43$ ).

251 Using Egger's regression and Begg's tests, we assessed the publication bias of nine  
252 studies that included long COVID prevalence in African populations. With  $z = 1.49$  ( $P$   
253  $= 0.1538$ ) and  $z = -0.52$  ( $P = 1.3978$ ), the publication bias was less likely.



254

255 **Figure 2:** Forest plot of long COVID prevalence in African countries



256

257 **Figure 3:** Forest plot of predominant symptoms of long COVID in African populations

258

259

### 260 3.3. Narrative synthesis

261

262 The narrative synthesis reported all statistically significant key findings (P 0.05) and  
 263 important findings related comorbidities associated with long COVID and  
 264 pathophysiology.

265 Long-COVID was statistically associated with advanced age and female sex in  
266 African populations ( $P \leq 0.05$ ).<sup>11,28</sup> In terms of clinical symptoms, long COVID was  
267 statistically associated with more than three long COVID symptoms in the acute  
268 phase, including initial fatigue and dyspnea, post-recovery stress, sadness and sleep  
269 disturbances, and loss of appetite at symptoms onset ( $P \leq 0.05$ ).<sup>11,26,27,28</sup> Our review  
270 also found that long COVID was statistically associated with mild, moderate, and  
271 severe COVID-19 ( $P \leq 0.05$ ).<sup>11,23,24,28</sup> Long COVID was also associated with  
272 supplemental oxygen during intensive care unit (ICU) admission and pulmonary  
273 involvement in chest CT scan ( $P \leq 0.05$ ).<sup>11,20,29</sup> Obesity, hypertension, diabetes  
274 mellitus, and the presence of any chronic illness were all statistically significant  
275 predictors of long COVID.<sup>11,29,30</sup> The most common comorbidities found in long  
276 COVID in African populations were hypertension, obesity, hyperlipidaemia, diabetes  
277 mellitus, human immunodeficiency virus (HIV), ischemic heart disease, chronic  
278 obstructive pulmonary disease (COPD)/asthma, malignancies, previous tuberculosis  
279 (TB), renal disease, thrombosis (previous blood clots), and psychiatric diseases, as  
280 shown in **Table 1** and **Figure 4**. In terms of pathophysiology, African studies found  
281 that long COVID patients had higher microclot and platelet poor plasma (PPP)  
282 viscosity when compared to control groups.<sup>18,21,22,25</sup> Furthermore, high levels of six  
283 inflammatory molecules were detected, including serum Amyloid A (SAA), -2  
284 antiplasmin (-2AP), platelet factor 4 (PF4), Von Willebrand Factor (VWF),  
285 endothelial-leukocyte adhesion molecule 1 (E-selectin), and platelet endothelial cell  
286 adhesion molecule-1 (PECAM-1).<sup>22</sup>

287



288

289 **Figure 1: Potential long COVID risk factors in Africa**

290

291

#### 292 **4. Discussion**

293

294 We conducted a systematic review to determine the burden of long COVID,  
295 prevalent symptoms, key findings, risk factors, and plausible pathophysiology in  
296 African populations. This review included fourteen studies on long COVID conducted  
297 in African populations. This study included 6,030 previously SARS-CoV-2 infected  
298 participants and 2,954 long COVID patients. Females outnumbered males among  
299 long COVID patients. The ages ranged from one to 85 years. The pooled prevalence  
300 (95% CI) of long COVID in the African population was 41% [26%-56%]. In  
301 comparison to a review of fifty included studies, 41 of which were meta-analysed, the  
302 global estimated pooled prevalence of long COVID-19 was 43% [39%-46%].<sup>13</sup> Long  
303 COVID prevalence was higher in Africa than in North America [31% (21%-43%)], but

304 lower in Europe [44% (32%-56%)] and Asia [51% (37%-65%)].<sup>13</sup> The prevalence  
305 (95%CI) of the most common symptoms were 41% [26%-56%] fatigue, 40% [12%-  
306 68%] confusion or lack of concentration, and 25% [12%-38%] dyspnoea. Our result  
307 was also on same line with a global review showing that the fatigue was the most  
308 common symptom reported with a prevalence of 23% [17%-30%]<sup>13,31</sup>, followed by  
309 confusion or lack of concentration 14% [10%-19%]<sup>13</sup> and dyspnoea 13% [11%-  
310 15%]<sup>13</sup>. Even though the African long COVID prevalence was slightly lower than the  
311 global prevalence, the Africans had higher rates of fatigue, confusion or lack of  
312 concentration, and dyspnea. Further research may be required to clarify these  
313 findings.

314 Our findings also revealed that Long-COVID was statistically associated with  
315 advanced age and being female in African populations.<sup>11,28</sup> Our findings were  
316 consistent with the findings of Chen et al., who found that female sex was a risk  
317 factor for long COVID. Long COVID was statistically associated with more than three  
318 long COVID symptoms in the acute phase, including initial fatigue and dyspnea,  
319 post-recovery stress, sadness, and sleep disturbances, and loss of appetite at the  
320 onset of symptoms.<sup>11,26-28</sup> Our findings support the results from previous systematic  
321 review and meta-analysis on long COVID symptoms.<sup>13,31,32</sup>

322 Our study also found that long COVID was statistically associated with mild,  
323 moderate, and severe COVID-19.<sup>11,23,24,28</sup> This could be explained by a significant  
324 increase in the rates of thrombotic events following even a mild COVID-19  
325 infection.<sup>22,33</sup> Long COVID was also statistically associated with supplemental  
326 oxygen during ICU admission and pulmonary involvement in chest CT scan.<sup>11,20,29</sup> A  
327 study that looked at the long-term outcomes of patients who needed ICU admission  
328 for severe COVID-19 found that the long-term effects of severe COVID-19 lasted

329 more than six months.<sup>34</sup> Similarly, a 12-month study found that a chest CT scan in  
330 acute COVID-19 correlates with pulmonary function and respiratory symptoms after  
331 SARS-CoV-2 infection.<sup>35</sup> Obesity, hypertension, diabetes mellitus, and the presence  
332 of any chronic illness were all statistically significant predictors of long COVID.<sup>11,29,30</sup>  
333 Preexisting conditions such as obesity and comorbidities were also found to be  
334 positively associated with post COVID-19 condition in multiple studies.<sup>36,37</sup>

335 In point of view pathophysiology, African studies demonstrated high microclot and  
336 Platelet poor plasma (PPP) viscosity were statistically higher in long COVID patients  
337 compared to the control groups.<sup>18,21,22,25</sup> In addition, high levels of six inflammatory  
338 molecules SAA,  $\alpha$ -2AP, PF4, VWF, E-selectin and PECAM-1, are known to be key  
339 drivers of endothelial and clotting pathology.<sup>22</sup> In fact, long COVID was associated  
340 with additional distinctive innate and adaptive immune traits, consisting of a weaker  
341 initial inflammatory response.<sup>38</sup> The viral tropism defined by the entry into cells  
342 through a widely expressed Angiotensin-Converting Enzyme 2 (ACE2) receptor  
343 makes it highly possible that many organs have the potential to undergo not only  
344 acute but also chronic damage, adding to the very diverse clinical picture of long  
345 COVID.<sup>39,40</sup> Long COVID may generate further complications based on  
346 hypercoagulation and thrombosis associated to advanced age and pre-existing co-  
347 morbidities. As an example, in African populations, a study reported that two people  
348 living with HIV (PLWH) developed cardiovascular complications (myocardial  
349 infarction and arrhythmia) during the three months of follow-up.<sup>41</sup> HIV status was  
350 strongly associated with long COVID, raising concerns that this condition might be  
351 common among PWH recovering from COVID-19.<sup>12</sup> Certainly, two main hypotheses  
352 should be considered. Firstly, it is well known how COVID-19 may cause and worsen  
353 cardiovascular events, especially in patients who are at increased risk such as



354 PLWH who also is in increased risk of hypertension, diabetes mellitus,  
355 dyslipidaemia, previous thrombosis and obesity.<sup>42,43</sup> Secondly, in patients with  
356 known pre-existing cardiovascular risk factors, SAA,  $\alpha$ -2AP, PF4, VWF, E-selectin  
357 and PECAM-1 induced by the presence of SARS-CoV-2 may have worsened and  
358 accelerated the cardiac damage and caused stress cardiomyopathy.<sup>22,41,43,44</sup> Turner  
359 et al. explained long COVID as the interaction between endothelial dysfunction,  
360 chronic inflammation, and platelet activation generating the formation of micro clot,  
361 inducing the raised of the above mentioned six inflammatory molecules and  
362 hypercoagulation and thrombosis.<sup>22</sup> This is significant because diabetes type 2 is a  
363 risk factor for long COVID in African populations and is associated with  
364 hypercoagulation states.<sup>18</sup> Comorbidities associated with an increased risk of long  
365 COVID, and hypercoagulability include cardiovascular disease, renal failure, venous  
366 thrombosis, cancer, and COPD.<sup>45</sup>

367 Given that Africa has the lowest COVID-19 vaccination rate among continents, this  
368 could be another risk factor for long COVID in Africa. A systematic review of six  
369 studies (n=17,256,654 individuals) investigating the impact of vaccines before acute  
370 SARS-CoV-2 infection found a low level of evidence suggesting that vaccination  
371 before SARS-CoV-2 infection could reduce the risk of subsequent long-COVID  
372 infection.<sup>46</sup> As with most common chronic conditions, the causation is not yet well  
373 understood. However, long COVID causation should be viewed as a multifactorial  
374 interaction between the individual co-morbidities, past medical history, SARS-CoV-2  
375 variants, genetic factors, and ethnicity. **Figure 4** in our study has clearly highlighted  
376 the multifactorial factors of long COVID in African populations. The reason that some  
377 individuals are more prone to develop long COVID possibly lies in their genetic  
378 profile primarily related to the immune system, such as human leukocyte antigen

379 (HLA).<sup>5</sup> Long COVID may be the result of tissue/organ damage, or inflammatory and  
380 immune pathways dysfunction (including chronic inflammation, hypercoagulation,  
381 thrombosis, hyperactive immune cells, and autoimmunity because of molecular  
382 mimicry).<sup>11,18,21,22,25</sup> This results to difference long COVID prevalence rates and  
383 symptoms among populations.

384 To the best of our knowledge, this is the first systematic review and meta-analysis of  
385 long COVID and its most common symptoms. This review will be useful in future  
386 research on long COVID and comorbidities in African populations, particularly  
387 comorbidities associated with thrombosis risk in African populations. The review's  
388 main weaknesses were the small number of included studies, poor study design of  
389 included studies, missing data, and high heterogeneity between studies. However,  
390 publication bias was less likely because the Egger's regression and Begg's tests  
391 were not statistically significant with  $z = 1.49$  ( $P = 0.1538$ ) and  $z = -0.52$  ( $P =$   
392  $1.3978$ ), respectively, and the test of group difference for long COVID symptoms was  
393 not statistically significant ( $P = 0.43$ ).

## 394 **5. Conclusion**

395 This review looked at the various characteristics of long COVID in Africa. Despite  
396 having the lowest number of COVID-19 cases, the prevalence of long COVID cases  
397 in Africa was closer to the global prevalence. Even though fatigue, dyspnea, and  
398 confusion or lack of concentration were the most common symptoms globally and in  
399 Africa, their prevalence rates were higher in Africa. Long COVID was associated with  
400 advanced age, female sex, three long COVID symptoms in the acute phase, initial  
401 fatigue and dyspnea, post-recovery stress, sadness, and sleep disturbances, and  
402 loss of appetite at symptoms onset, mild, moderate, and severe, pre-existing obesity,  
403 hypertension, diabetes mellitus, and the presence of any chronic illness in African

404 populations. According to our review, the pathophysiology of long COVID is  
405 explained by high microclot and PPP viscosity. This may raise the risk of additional  
406 cardiovascular complications in African populations. Future research should focus on  
407 long COVID, and comorbidities associated with hypercoagulation and thrombosis in  
408 African populations.

409

## 410 **6. Abbreviations**

411 -2AP: -2 antiplasmin; ACE2: Angiotensin-Converting Enzyme 2; AIDS: acquired  
412 immune deficiency syndrome; ARDS: acute respiratory distress syndrome; BMI:  
413 body mass index; CDC: Centers for Disease Control and Prevention; CCS: Chronic  
414 COVID syndrome; CFS: chronic fatigue syndrome; COPD: Chronic obstructive  
415 pulmonary disease; COVID-19: Coronavirus disease 2019; E-selectin: endothelial-  
416 leukocyte adhesion molecule 1; GORD: Gastroesophageal reflux disease; HIV:  
417 human immunodeficiency virus; HLA: human leukocyte antigen; ICU: intensive care  
418 unit; MIS-A: multi-system inflammatory syndrome in adults; MIS: multisystem  
419 inflammatory syndrome; NICE: National Institute for Health and Care Excellence;  
420 PASC: Post-Acute Sequelae of SARS-CoV-2; PECAM-1: platelet endothelial cell  
421 adhesion molecule-1; PLWH: persons living with HIV; PF4: platelet factor 4; PPP:  
422 platelet poor plasma; RNA: ribonucleic acid; RT-PCR: Reverse transcription  
423 polymerase chain reaction; SAA: serum Amyloid A; SARS-CoV-2: Severe acute  
424 respiratory syndrome coronavirus 2; TB: tuberculosis; UN: United Nations; VWF:  
425 Von Willebrand Factor; WHO: World Health Organization

## 426 **6. Footnotes**

427 **Author Contributions:** PSN conceived the review. PSN and JLT searched potential  
428 peer review manuscripts. PSN and JLT conducted the data extraction. JLT

429 undertook the data analysis. PSN and JLT drafted the manuscript. PSN, JLT and  
430 RTE edited the manuscript. This version was reviewed and approved by all the  
431 authors.

432 **Informed Consent Statement:** Not applicable

433 **Availability of data and materials:** All Data and material are available in this  
434 manuscript.

435 **Competing interests:** The authors declare that they have no financial or personal  
436 relationships that may have inappropriately influenced them in writing this article.

437 **Funding Source:** None

438 **Ethical Approval statement:** Not applicable

439

## 440 **7. References**

441

- 442 1. Aly MAEG, Saber HG. Long COVID and chronic fatigue syndrome: A survey  
443 of elderly female survivors in Egypt. International journal of clinical practice  
444 2021;75(12): e14886.
- 445 2. Davis HE, Assaf GS, McCorkell L, Wei H, Low RJ, Re'em Y, et al.  
446 Characterizing long COVID in an international cohort: 7 months of symptoms  
447 and their impact. EClinicalMedicine 2021; 38:101019.
- 448 3. Sudre Carole H, Murray Benjamin, Varsavsky Thomas, Graham Mark S,  
449 Penfold Rose S, Bowyer Ruth C, et al. Attributes and predictors of long  
450 COVID. 2021;27(4):626-31.
- 451 4. CDC. Long COVID or Post-COVID Conditions. In:  
452 <https://www.cdc.gov/coronavirus/2019-ncov/long-term-effects/index.html>.  
453 [2022](https://www.cdc.gov/coronavirus/2019-ncov/long-term-effects/index.html).

- 454 5. Akbarialiabad H, Taghrir MH, Abdollahi A, Ghahramani N, Kumar M, Paydar  
455 S, et al. Long COVID, a comprehensive systematic scoping review. *Infection*  
456 2021;49(6):1163-86.
- 457 6. Greenhalgh T, Knight M, A'Court C, Buxton M, Husain L. Management of  
458 post-acute covid-19 in primary care. *BMJ (Clinical research ed.)*  
459 2020;370:m3026.
- 460 7. Baig AM. Deleterious Outcomes in Long-Hauler COVID-19: The Effects of  
461 SARS-CoV-2 on the CNS in Chronic COVID Syndrome. *ACS chemical*  
462 *neuroscience* 2020;11(24):4017-20.
- 463 8. WHO. COVID-19 Weekly Epidemiological Update, Edition 123 published 21  
464 December 2022. [https://www.who.int/publications/m/item/covid-19-weekly-](https://www.who.int/publications/m/item/covid-19-weekly-epidemiological-update---21-december-2022)  
465 [epidemiological-update---21-december-2022](https://www.who.int/publications/m/item/covid-19-weekly-epidemiological-update---21-december-2022)
- 466 9. United Nations Population Division. World Population Prospects. In:  
467 <https://population.un.org/wpp/>. 2019.
- 468 10. Wamai RG, Hirsch JL, Van Damme W, Alnwick D, Bailey RC, Hodgins S, et  
469 al. What Could Explain the Lower COVID-19 Burden in Africa despite  
470 Considerable Circulation of the SARS-CoV-2 Virus? *International journal of*  
471 *environmental research and public health* 2021;18(16).
- 472 11. Dryden M, Mudara C, Vika C, Blumberg L, Mayet N, Cohen C, et al. post-  
473 COVID-19 condition 3 months after hospitalisation with SARS-CoV-2 in South  
474 Africa: a prospective cohort study. *The Lancet. Global health* 2022;10(9):  
475 e1247-56.
- 476 12. Peluso MJ, Spinelli MA, Deveau TM, Forman CA, Munter SE, Mathur S, et al.  
477 Post acute sequelae and adaptive immune responses in people with HIV

- 478 recovering from SARS-COV-2 infection. *AIDS* (London, England)  
479 2022;36(12):F7-F16.
- 480 13. Chen C, Hauptert SR, Zimmermann L, Shi X, Fritsche LG, Mukherjee B.  
481 Global Prevalence of Post-Coronavirus Disease 2019 (COVID-19) Condition  
482 or Long COVID: A Meta-Analysis and Systematic Review. *J Infect Dis.* 2022  
483 ;226(9):1593-1607.
- 484 14. Rinaldi R, Basile M, Salzillo C, Grieco DL, Caffè A, Masciocchi C, Lilli L,  
485 Damiani A, La Vecchia G, Iannaccone G, Bonanni A, De Pascale G, Murri R,  
486 Fantoni M, Liuzzo G, Sanna T, Massetti M, Gasbarrini A, Valentini V, Antonelli  
487 M, Crea F, Montone RA, On Behalf Of The Gemelli Against Covid Group.  
488 Myocardial Injury Portends a Higher Risk of Mortality and Long-Term  
489 Cardiovascular Sequelae after Hospital Discharge in COVID-19 Survivors. *J*  
490 *Clin Med.* 2022;11(19):5964.
- 491 15. Page MJ, McKenzie JE, Bossuyt PM, Boutron I, Hoffmann TC, Mulrow CD,  
492 Shamseer L, Tetzlaff JM, Akl EA, Brennan SE, Chou R, Glanville J, Grimshaw  
493 JM, Hróbjartsson A, Lalu MM, Li T, Loder EW, Mayo-Wilson E, McDonald S,  
494 McGuinness LA, Stewart LA, Thomas J, Tricco AC, Welch VA, Whiting P,  
495 Moher D. The PRISMA 2020 statement: an updated guideline for reporting  
496 systematic reviews. *Syst Rev.* 2021;10(1):89.
- 497 16. Lo CK, Mertz D, Loeb M. Newcastle-Ottawa Scale: comparing reviewers to  
498 authors' assessments. *BMC Med Res Methodol.* 2014 Apr 1; 14:45. doi:  
499 10.1186/1471-2288-14-45. PMID: 24690082; PMCID: PMC4021422.
- 500 17. Higgins JPT, Green S. eds. *Cochrane Handbook for Systematic Reviews of*  
501 *Interventions* 4.2.6 [updated September 2006]. In: Chichester, UK: John Wiley  
502 & Sons, Ltd, 2006:6. The Cochrane Library

- 503 18. Pretorius E, Vlok M, Venter C, Bezuidenhout JA, Laubscher GJ, Steenkamp  
504 J, Kell DB. Persistent clotting protein pathology in Long COVID/Post-Acute  
505 Sequelae of COVID-19 (PASC) is accompanied by increased levels of  
506 antiplasmin. *Cardiovasc Diabetol*. 2021;20(1):172.
- 507 19. Kruger A, Vlok M, Turner S, Venter C, Laubscher GJ, Kell DB, Pretorius E.  
508 Proteomics of fibrin amyloid microclots in long COVID/post-acute sequelae of  
509 COVID-19 (PASC) shows many entrapped pro-inflammatory molecules that  
510 may also contribute to a failed fibrinolytic system. *Cardiovasc Diabetol*.  
511 2022;21(1):190.
- 512 20. El Otmani H, Nabili S, Berrada M, Bellakhdar S, El Moutawakil B, Abdoh Rafai  
513 M. Prevalence, characteristics, and risk factors in a Moroccan cohort of Long-  
514 Covid-19. *Neurol Sci*. 2022;43(9):5175-5180.
- 515 21. Walker M, Federico EM, Kell DB, Dupont C, Proal A, Pretorius E. Detection  
516 and Characterization of Fibrin/Amyloid Microclots in Patients with Post-Acute  
517 Sequelae of Covid-19. *Circulation*. 2022 Nov 8;146(Suppl\_1): A15637-.
- 518 22. Turner S, Naidoo C, Usher T, Kruger A, Venter C, Laubscher GJ, Khan MA,  
519 Kell DB, Pretorius E. Increased levels of inflammatory molecules in blood of  
520 Long COVID patients point to thrombotic endotheliitis. *medRxiv*. 2022 Jan 1.  
521 <https://www.medrxiv.org/content/10.1101/2022.10.13.22281055v1>
- 522 23. Ogoina D, James HI, Ogoinja SZ. Post-Discharge Symptoms among  
523 Hospitalized COVID-19 Patients in Nigeria: A Single-Center Study. *Am J Trop*  
524 *Med Hyg*. 2021;105(3):731-736.
- 525 24. Osikomaiya B, Erinoso O, Wright KO, Odusola AO, Thomas B, Adeyemi O,  
526 Bowale A, Adejumo O, Falana A, Abdus-Salam I, Ogboye O, Osibogun A,

- 527 Abayomi A. 'Long COVID': persistent COVID-19 symptoms in survivors  
528 managed in Lagos State, Nigeria. *BMC Infect Dis.* 2021;21(1):304.
- 529 25. Pretorius E, Venter C, Laubscher GJ, Kotze MJ, Oladejo SO, Watson LR,  
530 Rajaratnam K, Watson BW, Kell DB. Prevalence of symptoms, comorbidities,  
531 fibrin amyloid microclots and platelet pathology in individuals with Long  
532 COVID/Post-Acute Sequelae of COVID-19 (PASC). *Cardiovasc Diabetol.*  
533 2022;21(1):148.
- 534 26. Zulu JE, Banda D, Hines JZ, Luchembe M, Sivile S, Siwingwa M, Kampamba  
535 D, Zyambo KD, Chirwa R, Chirwa L, Malambo W, Barradas D, Sinyange N,  
536 Agolory S, Mulenga LB, Fwoloshi S. Two-month follow-up of persons with  
537 SARS-CoV-2 infection-Zambia, September 2020: a cohort study. *Pan Afr Med*  
538 *J.* 2022; 41:26.
- 539 27. Aly MAEG, Saber HG. Long COVID and chronic fatigue syndrome: A survey  
540 of elderly female survivors in Egypt. *Int J Clin Pract.* 2021 Dec;75(12):  
541 e14886.
- 542 28. Mendelsohn AS, Nath N, De Sá A, Von Pressentin KB. Two months follow-up  
543 of patients with non-critical COVID-19 in Cape Town, South Africa. *S Afr Fam*  
544 *Pract* (2004). 2022 Feb 10;64(1): e1-e6.
- 545 29. Galal I, Hussein AA, Amin MT, Saad MM, Zayan HE, Abdelsayed MZ,  
546 Moustafa MM, Ezzat AR, Helmy RE, Abd\_Elaal HK, Al Massry NA.  
547 Determinants of persistent post-COVID-19 symptoms: value of a novel  
548 COVID-19 symptom score. *The Egyptian Journal of Bronchology.*  
549 2021;15(1):1-8.



- 550 30. Crankson S, Pokhrel S, Anokye NK. Determinants of COVID-19-Related  
551 Length of Hospital Stays and Long COVID in Ghana: A Cross-Sectional  
552 Analysis. *Int J Environ Res Public Health*. 2022;19(1):527.
- 553 31. Global Burden of Disease Long COVID Collaborators, Wulf Hanson S,  
554 Abbafati C, Aerts JG, Al-Aly Z, Ashbaugh C, Ballouz T, Blyuss O, Bobkova P,  
555 Bonsel G, Borzakova S, Buonsenso D, Butnaru D, Carter A, Chu H, De Rose  
556 C, Diab MM, Ekblom E, El Tantawi M, Fomin V, Frithiof R, Gamirova A,  
557 Glybochko PV, Haagsma JA, Haghjooy Javanmard S, Hamilton EB, Harris G,  
558 Heijenbrok-Kal MH, Helbok R, Hellemons ME, Hillus D, Huijts SM, Hultström  
559 M, Jassat W, Kurth F, Larsson IM, Lipcsey M, Liu C, Loflin CD, Malinovsky A,  
560 Mao W, Mazankova L, McCulloch D, Menges D, Mohammadifard N, Munblit  
561 D, Nekliudov NA, Ogbuoji O, Osmanov IM, Peñalvo JL, Petersen MS, Puhan  
562 MA, Rahman M, Rass V, Reinig N, Ribbers GM, Ricchiuto A, Rubertsson S,  
563 Samitova E, Sarrafzadegan N, Shikhaleva A, Simpson KE, Sinatti D, Soriano  
564 JB, Spiridonova E, Steinbeis F, Svistunov AA, Valentini P, van de Water BJ,  
565 van den Berg-Emons R, Wallin E, Witzernath M, Wu Y, Xu H, Zoller T, Adolph  
566 C, Albright J, Amlag JO, Aravkin AY, Bang-Jensen BL, Bisignano C,  
567 Castellano R, Castro E, Chakrabarti S, Collins JK, Dai X, Daoud F, Dapper C,  
568 Deen A, Duncan BB, Erickson M, Ewald SB, Ferrari AJ, Flaxman AD, Fullman  
569 N, Gamkrelidze A, Giles JR, Guo G, Hay SI, He J, Helak M, Hulland EN,  
570 Kereselidze M, Krohn KJ, Lazzar-Atwood A, Lindstrom A, Lozano R, Malta  
571 DC, Månsson J, Mantilla Herrera AM, Mokdad AH, Monasta L, Nomura S,  
572 Pasovic M, Pigott DM, Reiner RC Jr, Reinke G, Ribeiro ALP, Santomauro DF,  
573 Sholokhov A, Spurlock EE, Walcott R, Walker A, Wiysonge CS, Zheng P,  
574 Bettger JP, Murray CJL, Vos T. Estimated Global Proportions of Individuals

- 575 With Persistent Fatigue, Cognitive, and Respiratory Symptom Clusters  
576 Following Symptomatic COVID-19 in 2020 and 2021. *JAMA*.  
577 2022;328(16):1604-1615.
- 578 32. Aiyegbusi OL, Hughes SE, Turner G, Rivera SC, McMullan C, Chandan JS,  
579 Haroon S, Price G, Davies EH, Nirantharakumar K, Sapey E, Calvert MJ; TLC  
580 Study Group. Symptoms, complications and management of long COVID: a  
581 review. *J R Soc Med*. 2021;114(9):428-442.
- 582 33. Al-Aly Z, Bowe B, Xie Y. Long COVID after breakthrough SARS-CoV-2  
583 infection. *Nat Med*. 2022;28(7):1461-1467.
- 584 34. Neville TH, Hays RD, Tseng CH, Gonzalez CA, Chen L, Hong A, Yamamoto  
585 M, Santoso L, Kung A, Schwab K, Chang SY, Qadir N, Wang T, Wenger NS.  
586 Survival After Severe COVID-19: Long-Term Outcomes of Patients Admitted  
587 to an Intensive Care Unit. *J Intensive Care Med*. 2022;37(8):1019-1028.
- 588 35. Steinbeis F, Thibeault C, Doellinger F, Ring RM, Mittermaier M, Ruwwe-  
589 Glösenkamp C, Alius F, Knape P, Meyer HJ, Lippert LJ, Helbig ET, Grund D,  
590 Temmesfeld-Wollbrück B, Suttorp N, Sander LE, Kurth F, Penzkofer T,  
591 Witzenrath M, Zoller T. Severity of respiratory failure and computed chest  
592 tomography in acute COVID-19 correlates with pulmonary function and  
593 respiratory symptoms after infection with SARS-CoV-2: An observational  
594 longitudinal study over 12 months. *Respir Med*. 2022; 191:106709.
- 595 36. Xie Y, Al-Aly Z. Risks and burdens of incident diabetes in long COVID: a  
596 cohort study. *Lancet Diabetes Endocrinol*. 2022;10(5):311-321.
- 597 37. Xie Y, Xu E, Bowe B, Al-Aly Z. Long-term cardiovascular outcomes of COVID-  
598 19. *Nat Med*. 2022;28(3):583-590.

- 599 38. García-Abellán J, Padilla S, Fernández-González M, García JA, Agulló V,  
600 Andreo M, Ruiz S, Galiana A, Gutiérrez F, Masiá M. Antibody Response to  
601 SARS-CoV-2 is Associated with Long-term Clinical Outcome in Patients with  
602 COVID-19: a Longitudinal Study. *J Clin Immunol.* 2021;41(7):1490-1501.
- 603 39. Gavriatopoulou M, Korompoki E, Fotiou D, Ntanasis-Stathopoulos I,  
604 Psaltopoulou T, Kastritis E, et al. Organ-specific manifestations of COVID-19  
605 infection. *Clinical and experimental medicine* 2020;20(4):493-506.
- 606 40. Augustin M, Schommers P, Stecher M, Dewald F, Gieselmann L, Gruell H, et  
607 al. post-COVID syndrome in non-hospitalised patients with COVID-19: a  
608 longitudinal prospective cohort study. *The Lancet regional health. Europe*  
609 2021; 6:100122.
- 610 41. Mazzitelli M, Trunfio M, Sasset L, Leoni D, Castelli E, Lo Menzo S, et al.  
611 Factors Associated with Severe COVID-19 and Post-Acute COVID-19  
612 Syndrome in a Cohort of People Living with HIV on Antiretroviral Treatment  
613 and with Undetectable HIV RNA. *Viruses* 2022;14(3).
- 614 42. Nishiga M, Wang DW, Han Y, Lewis DB, Wu JC. COVID-19 and  
615 cardiovascular disease: from basic mechanisms to clinical perspectives.  
616 *Nature reviews. Cardiology* 2020;17(9):543-58.
- 617 43. Jabri A, Kalra A, Kumar A, Alameh A, Adroja S, Bashir H, et al. Incidence of  
618 Stress Cardiomyopathy During the Coronavirus Disease 2019 Pandemic.  
619 *JAMA network open* 2020;3(7): e2014780.
- 620 44. Rajpal S, Tong MS, Borchers J, Zareba KM, Obarski TP, Simonetti OP, et al.  
621 Cardiovascular Magnetic Resonance Findings in Competitive Athletes  
622 Recovering From COVID-19 Infection. *JAMA cardiology* 2021;6(1):116-8.

- 623 45. Rahaghi FN, Pistenmaa CL. Hypercoagulation in COPD: the clot thickens.  
624 ERJ Open Res. 2021;7(4):00534-2021.
- 625 46. Notarte KI, Catahay JA, Velasco JV, Pastrana A, Ver AT, Pangilinan FC, et al.  
626 Impact of COVID-19 vaccination on the risk of developing long-COVID and on  
627 existing long-COVID symptoms: A systematic review. EClinicalMedicine 2022;  
628 53:101624.
- 629

**Table 1 summarises the evidence-based studies of long COVID-19 in Africa**

Study ID/Settings	Study population	Study designs	Long COVID prevalence	Predominant symptoms	Comorbidities	Key findings
Dryden et al., 2022/South Africa	1,873 enrolled hospitalized COVID-19 participants were followed up three months after hospital discharge. 960 (53.1%) were women and 913 (48.8%) were men, the median age was 52 years (41–62)	A prospective, observational cohort study	1,249/1873(66.7%)	Fatigue (50.3%), shortness of breath (23.4%), confusion or lack of concentration (17.5%), headaches (13.8%), and problems seeing/blurred vision (10.1%).	The most common self-reported comorbidities were hypertension (n=669; 35.7%), obesity (n=474; 25.3%), and diabetes mellitus (n=418; 22.3%). HIV was reported by 95 (5.1%) participants.	age ≥65 years (aOR) 1.62; 95%CI 1.00-2.61]; female sex (aOR 2.00; 95% CI 1.51-2.65); requiring supplemental oxygen during admission (aOR 1.44; 95% CI 1.06-1.97); ICU admission (aOR 1.87; 95% CI 1.36-2.57); pre-existing obesity (aOR 1.44; 95% CI 1.09- 1.91); and the presence of ≥4 acute symptoms (aOR 1.94; 95% CI 1.19-3.15)
Mendelsohn et al., 2022/South Africa	174 long COVID among 653 COVID-19 infected patients. The mean age of participants was 50.3 (13.6) years; 62% were female.	Retrospective cross-sectional study	172/653 (35%)	Fatigue 60 (34.5%) Dyspnoea 35 (20.1%) Loss of taste 34 (19.5%) Loss of smell 32 (18.4%) Headache 27 (15.5%) Body aches 26 (14.9%) Chest pain 19 (10.9%) Gastrointestinal complaints 21 (12.1%) Palpitations 18 (10.3%) Rash 11 (6.3%)	Diabetes 35 (22.0%); Hypertension 77 (48.4%) ischemic heart disease 7 (4.4%) COPD/asthma 10 (6.3%) Prior TB 1 (0.6%) HIV 1 0.6 Other 7 (4.4%)	Sex, age, baseline severity of disease, or number of initial COVID-19 symptoms were predictive of self-reported dyspnoea, fatigue, ≥ 3 long COVID symptoms, or self-reported non-recovery.
Aly et al., 2021/Egypt	A total of 115 females among them 66 had long COVID. The mean age was 73.18 ± 6.42.	A retrospective cross-sectional study	66/115 (57%)	Dyspnoea 20 (17.4) Cough 10 (8.7) Chest pain 9 (7.8) Palpitations 13		The presence of post-recovery symptoms was significantly related

				(11.3) Insomnia 28 (24.3) Headache 14 (12.2) Loss of smell and taste 14 (12.2) Stress 65 (56.5) Sadness 55 (47.8) Fatigue 66 (57.4) Cognitive dysfunction 29 (25.2) Recurrent falls 29 (25.2) Incontinence 21 (18.3)		to stress (P = .005), sadness (P = .007) and sleep disturbances (P < .001)
Crankson et al., 2022/Ghana	2334 patients, among them 50 had long COVID. 60.1% were men and 39.9% were women. The majority were aged from 30 to 59 years (57.5%)	A Cross-Sectional Analysis	50/2334 (2%)	N/A	N/A	COVID-19 patients with hypertension and diabetes mellitus spent almost 2 days longer in hospital (p = 0.00, 95% CI = 1.42–2.33) and had 4 times the odds of long COVID (95% CI = 1.61–10.85, p = 0.003) compared to those with no comorbidities.
Ogoina et al., 2021/Nigeria	51 previously hospitalized COVID-19 patients (median age, 46 years; male, 66.7%) were studied.	Retrospective review	9/51 (17.65%)	Cough: 9 Fatigue: 8 Short of breath: 5 Chest pain: 4 Palpitations: 2 Anxiety: 3 Anorexia: 3	History of diabetes, n (%): 4 History of hypertension, n (%): 8	Mild COVID-19 (P = 0.029)
Osikomaiya et al., 2021/Nigeria	274 patients were enrolled in the study. A majority were within the age group > 35 to ≤49 years (38.3%), and male (66.1%).	A retrospective study design	112/274 (40.9%)	Easy fatigability 35 (12.8) Myalgia 24 (8.8) Cough 25 (9.2) Dyspnea 26 (9.5) Chest pain 27 (9.8) Loss of appetite 24 (8.8) Palpitations 20 (7.4) Headache 35 (12.8)	comorbidities (n = 52), the most common comorbidities were hypertension (72.9%) and diabetes (15.3%)	Moderate COVID-19 (aOR): 2.03 (1.19, 3.47)

Pretorius et al., 2021/ South Africa	Blood was collected from healthy volunteers (N=13; 6 males, 7 females; mean age: 52.4±4.8) to serve as controls.	Case control study	N/A	Insomnia 27 (9.8) N/A	Type 2 diabetes mellitus	A significant difference was noted between Platelet poor plasma (PPP) viscosity of controls and acute COVID-19 (p=0.001) and acute COVID-19 and Long COVID/PASC (p=0.002).
Kruger 2022/South Africa	99 long COVID patients and 29 healthy controls. Median age of 51 [40–60] median age	Case control study	N/A	Constant fatigue: 74% Cognitive impairment (“brain fog” / forgetfulness / poor concentration): 71%; Dyspnoea 59% Arthralgia / myalgia: 49%; Sleep disturbance: 34% Depression / anxiety: 30% Heart rate dysfunction / palpitations: 30% Recurring chest pain: 29%; Anosmia (loss of smell) 25%; Dysgeusia: (loss of taste) 25%; Low oxygen levels 13%	Hypertension 24% Hyperlipidaemia 19% Type 2 diabetes mellitus 6%	N/A
Otmani et al., 2022/Marocco	118 healthcare workers who endured the Covid-19 infection and 118 matched controls. 71% were females. Average age-median (years) 29 (21–54)	case–control study	56/118 (47.4%)	At least one symptom 56(47.4%) Myalgia 13.3% Anxiety 21.7% Attention disorders, memory impairment “brain fog” 14.4% Sleep disorders 12% Palpitations 10.8% Arthralgia 9.6% Asthenia 25.3% Chest pain 8.4%	N/A	Pulmonary involvement in chest CT scan

				Anosmia/hyposmia 9.6%		
Zulu et al., 2022/Zambia	27 participants. Mean participant age was 32 years (range: 1-85 years). 17 (63.0%) were females	Prospective cohort study	27/182 (37%)	Cough 10 (37.0) Rhinorrhea 5 (18.5) Headache 7 (25.9) Chest pain 6 (22.2) Arthralgia 4 (14.8)	HIV 2(7.4%)	Those with five or more symptoms at onset had nearly (p=0.03) Participants with loss of appetite at symptoms onset (p=0.01).
Galal et al., 2021/Egypt	430 participants. They were 156 males and 274 females, their mean age was 37.4 ± 12.6 years, and the range was 12–74 years.	Cross-sectional study	268/430 (60%)	myalgia (60.0%), arthralgia (57.2%), restriction of daily activities (57.0%), and sleeping troubles (50.9%), followed by anorexia (42.6%), chest pain (32.6%), gastritis (32.3%), cough (29.3%), and dyspnea (29.1%).	Diabetes mellitus: 10.9% Hypertension: 15.10% Cardiac disease: 1.9% Chronic pulmonary disease: 5.3% Renal disease: 2.3% Psychiatric disease: 1.6%	Need of oxygen therapy (< 0.001) Hypertension (0.039) Any chronic illness (0.004)
Pretorius et al., 2022/ South Africa	845 participants The gender balance (70% female) and the most reported Long COVID/PASC symptoms. The majority (i.e., 76%) of the participants were between the ages of 31–40, 41–50, and 51–60 years.	Retrospective cohort	N/A	Fatigue, brain fog, loss of concentration and forgetfulness, shortness of breath, as well as joint and muscle pains	Hypertension, high cholesterol levels (dyslipidaemia), cardiovascular disease and type 2 diabetes mellitus (T2DM)	Microclot and platelet pathologies were associated with Long COVID/PASC symptoms that persisted after the recovery from acute COVID-19.
Walker et al., 2022/South Africa	30 matched healthy subjects and 30 PASC subjects.	Case control study	N/A	N/A	N/A	Significant microclot load was observed in the PPP of participants with PASC
Turner et al., 2022/South Africa	25 Long COVID patients. 52 (±14) years. Females were predominant.	Case control study	N/A	N/A	Hypertension: 36% Hyperlipidaemia: 40% Type 2 Diabetes Mellitus: 12%	Presence of microclotting, together with relatively high levels of six inflammatory



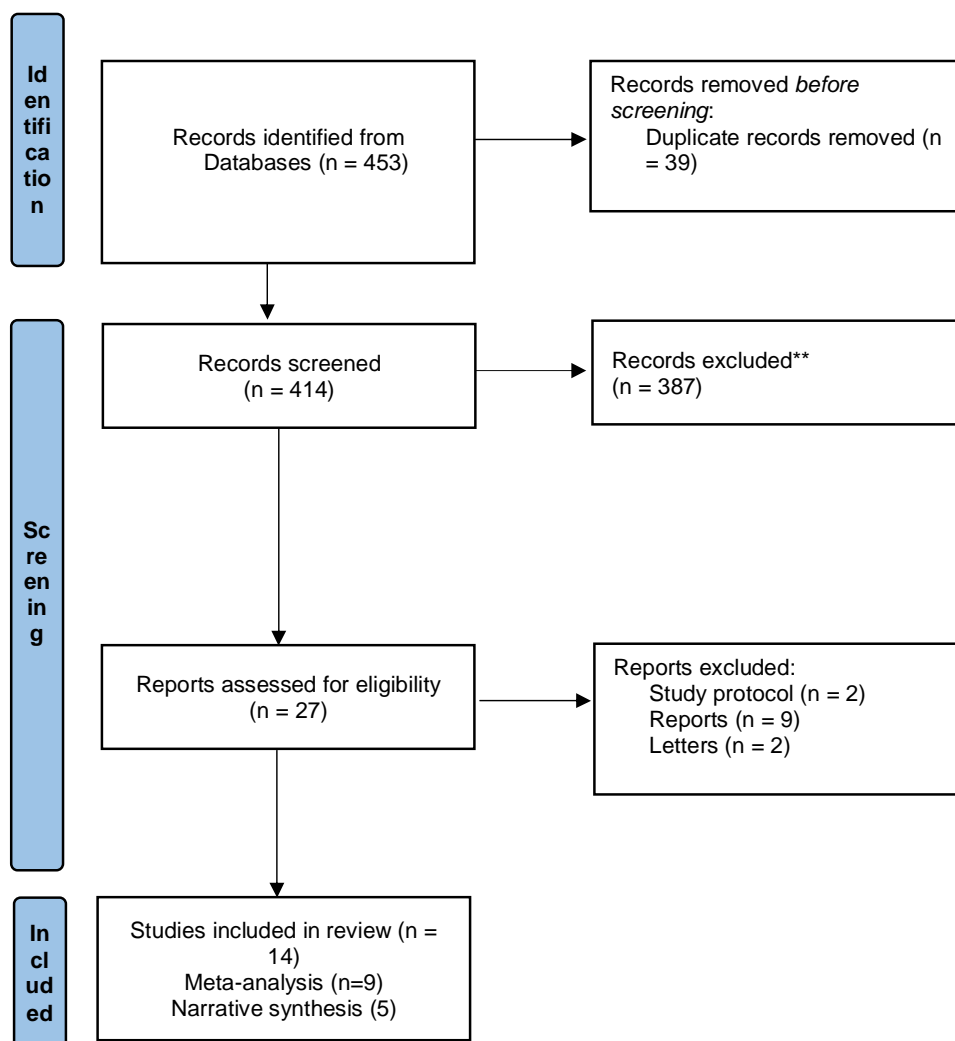
					Cardiovascular disease: 8% Thrombosis (previous blood clots): 8% Cancer: 12%	molecules known to be key drivers of endothelial and clotting pathology
--	--	--	--	--	--	---

### Supplementary material 1: Quality assessment of included studies

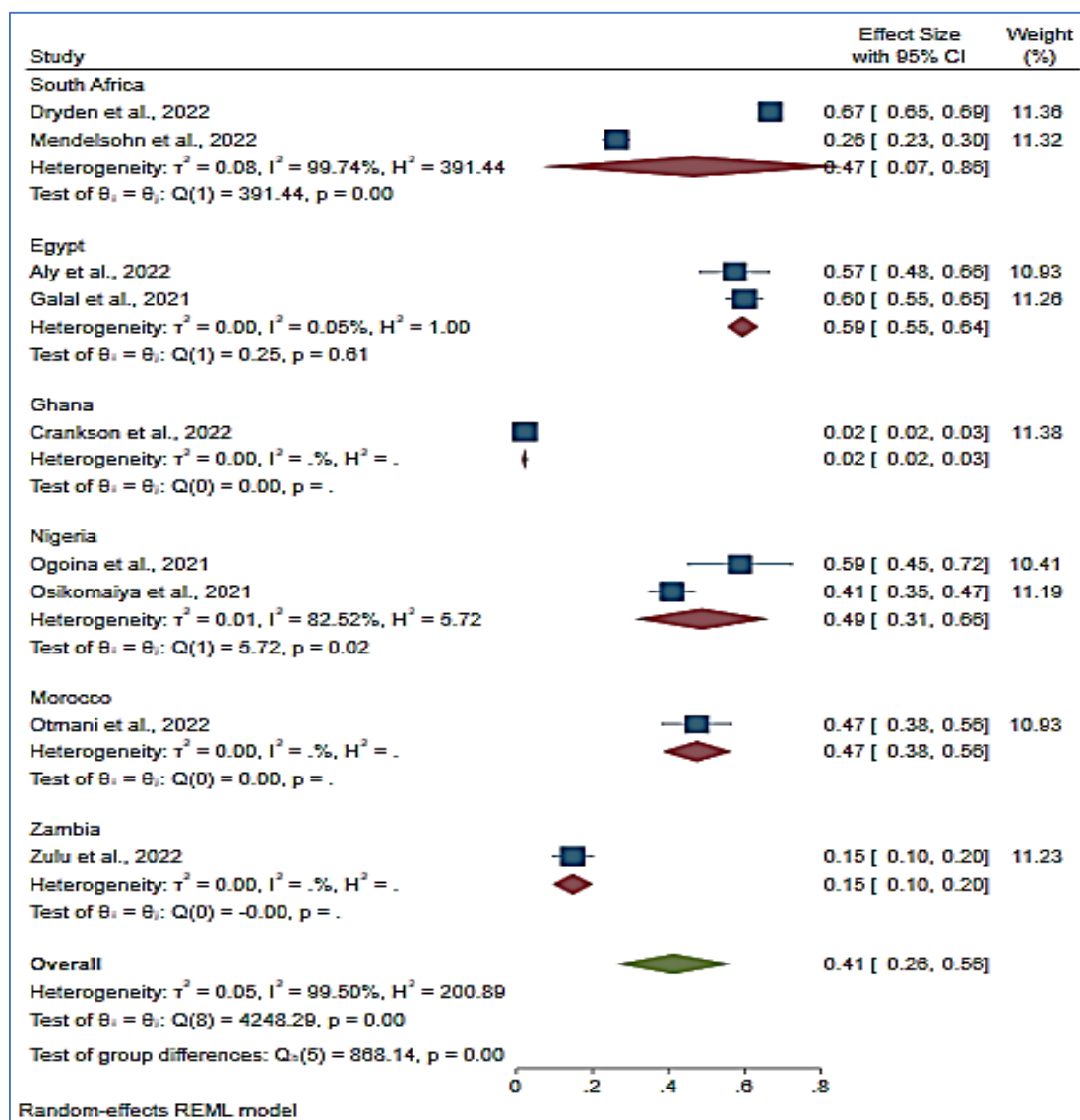
Table 2. Quality assessment of included studies.					
Author (year)	Study design	Quality assessment criteria			Overall quality
		Selection	Comparability	Outcome/exposure	
Dryden et al., 2022	Prospective cohort study	****	**	**	8
Mendelsohn et al., 2022	Retrospective cross-sectional study	***	*	***	7
Aly et al., 2021	Retrospective cross-sectional study	**	*	**	5
Crankson et al., 2022	Cross-Sectional Analysis	**	*	**	5
Ogoina et al., 2021	Retrospective review	***	*	**	6
Osikomaiya et al., 2021	Retrospective study design	**	*	**	5
Pretorius et al., 2021	Case control study	**	*	**	5
Kruger 2022	Case control study	***	*	***	7
El Otmani et al., 2022	Case control study	***	**	*	6
Zulu et al., 2022	Prospective cohort study	***	*	***	7
Galal et al., 2021	Cross-sectional study	**	*	**	5
Pretorius et al., 2022	Retrospective cohort	***	*	***	6

Walker et al., 2022	Case control study	**	**	**	6
Turner et al., 2022	Case control study	**	*	***	6

Newcastle-Ottawa Scale was obtained to assess the selection, comparability and exposure of the case-control study, while the selection, comparability and outcome for the cohort study. -: no point; \*: one point; \*\*: two points; \*\*\*: three points; \*\*\*\*: four points.



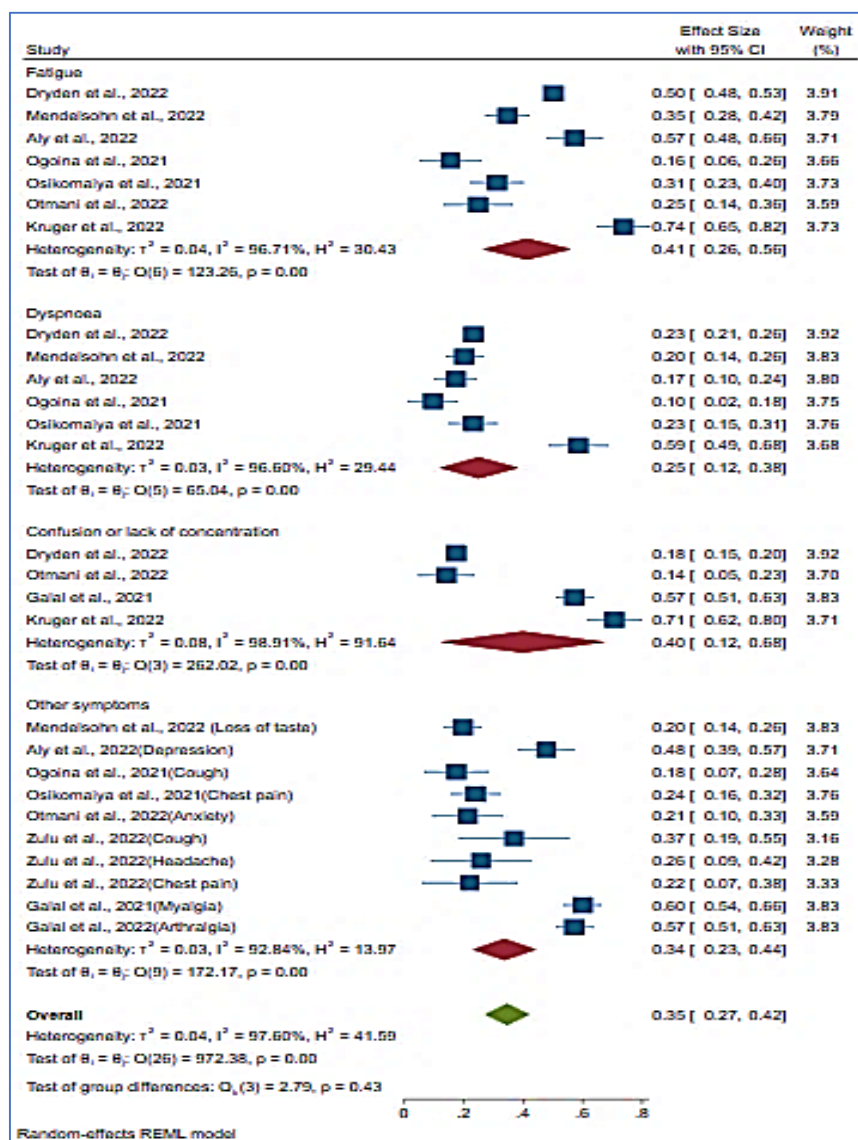
**Figure 1:** Flow chart of studies reviewing long COVID in African populations



**Figure 2:** Forest plot of long COVID prevalence in African countries



**Figure 1:** Potential long COVID risk factors in Africa



**Figure 3:** Forest plot of predominant symptoms of long COVID in African populations