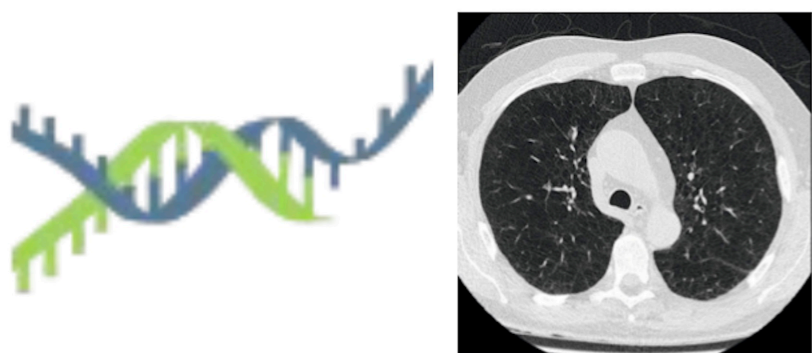
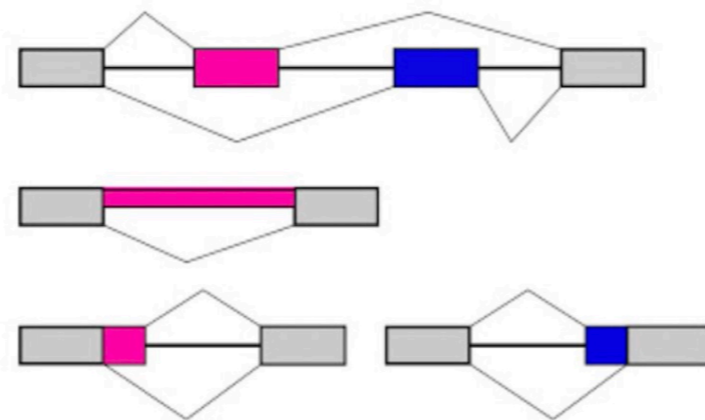


Figure E1



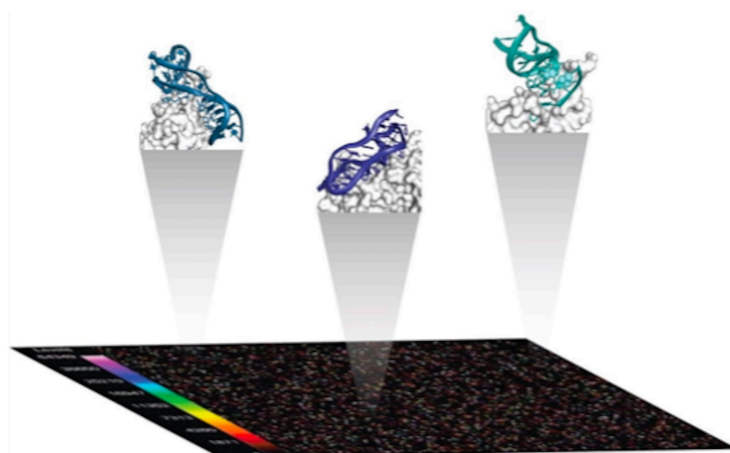
Clinical, transcriptomic, and proteomic data collection in COPDGene visit 2

- CT-quantified emphysema
- Whole blood RNA sequencing
- Plasma SomaScan proteomic assay



Differential gene expression, isoform/exon usage, and gene ontology enrichment analyses (Training)

- *Primary analysis*: Emphysema model without BMI adjustment
- *Sensitivity analysis*: Emphysema model with BMI adjustment (DGE only)

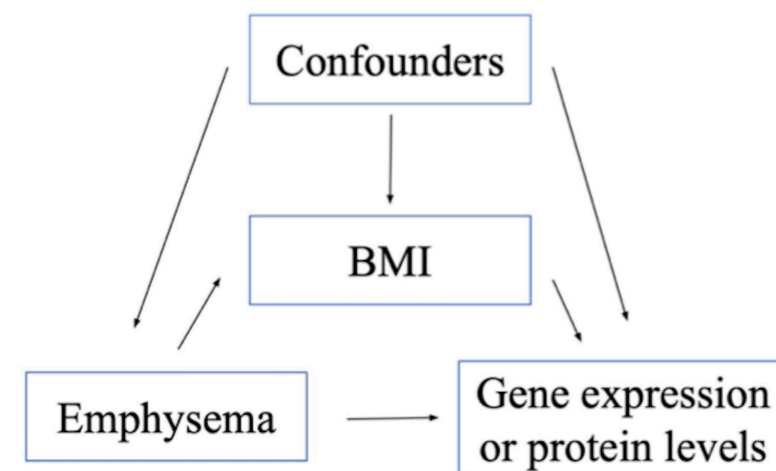


Protein association analyses (Training)

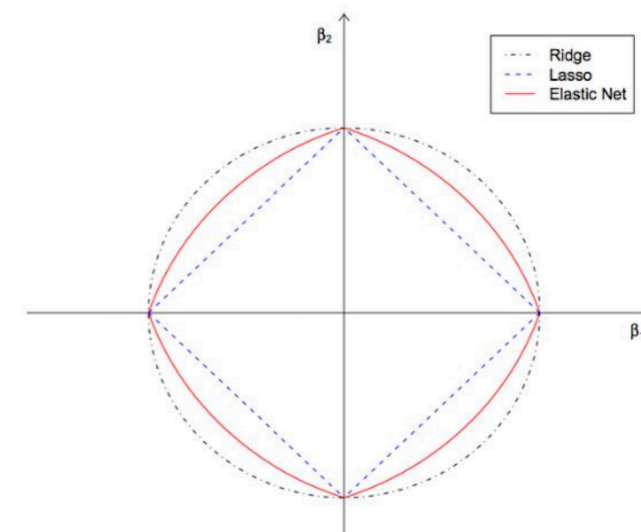
- *Primary analysis*: Emphysema model without BMI adjustment
- *Sensitivity analysis*: Emphysema model with BMI adjustment

Validation analyses (Testing)

- Differential gene expression, isoform/exon usage, and protein association analysis
- Emphysema model without BMI adjustment



Mediation analysis



Elastic net prediction of emphysema
Clinical, CBC, gene, isoform, exon, and protein predictors

Figure E2

Top-15 adjusted Perc15-associated plasma proteins in COPDGene

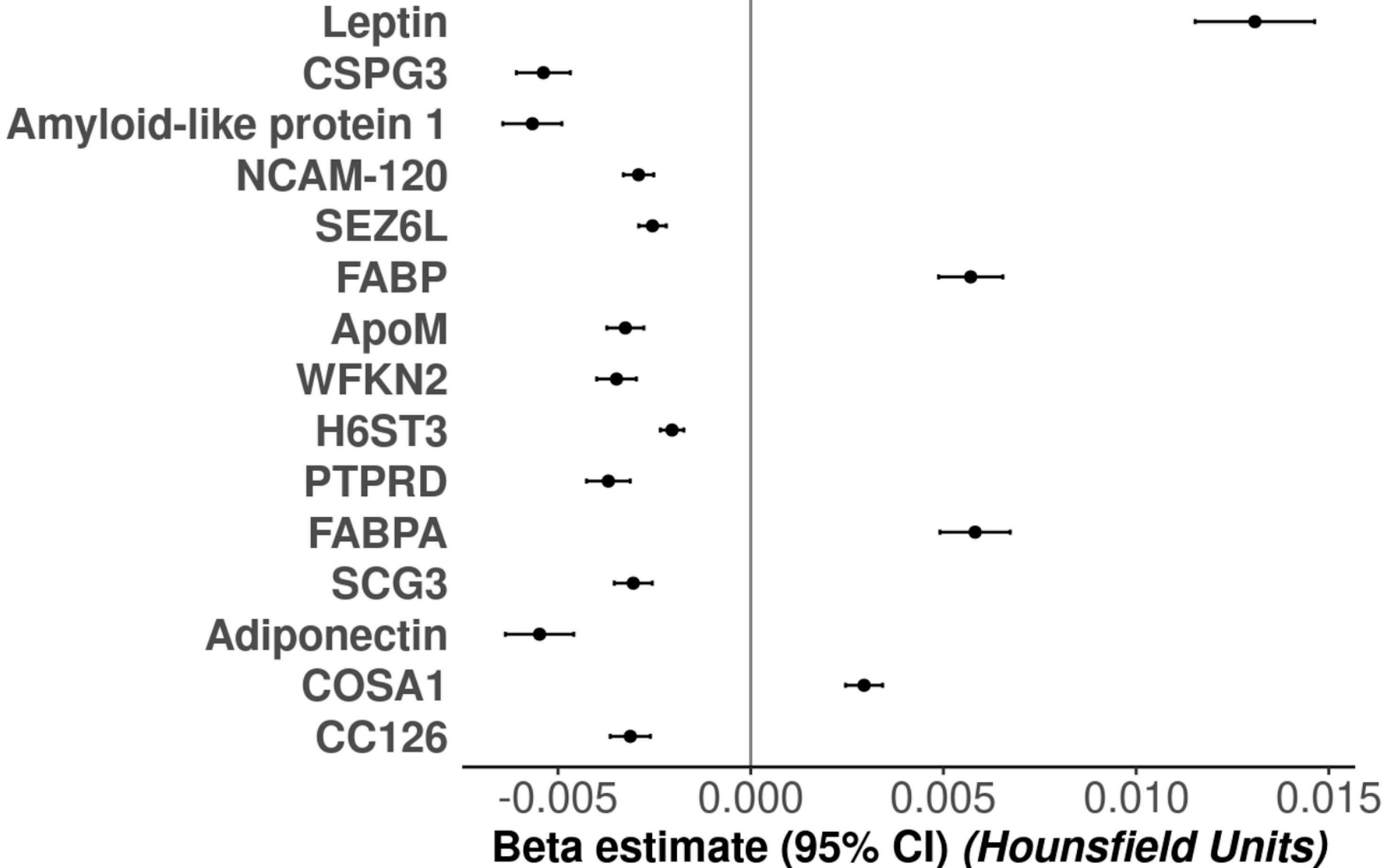
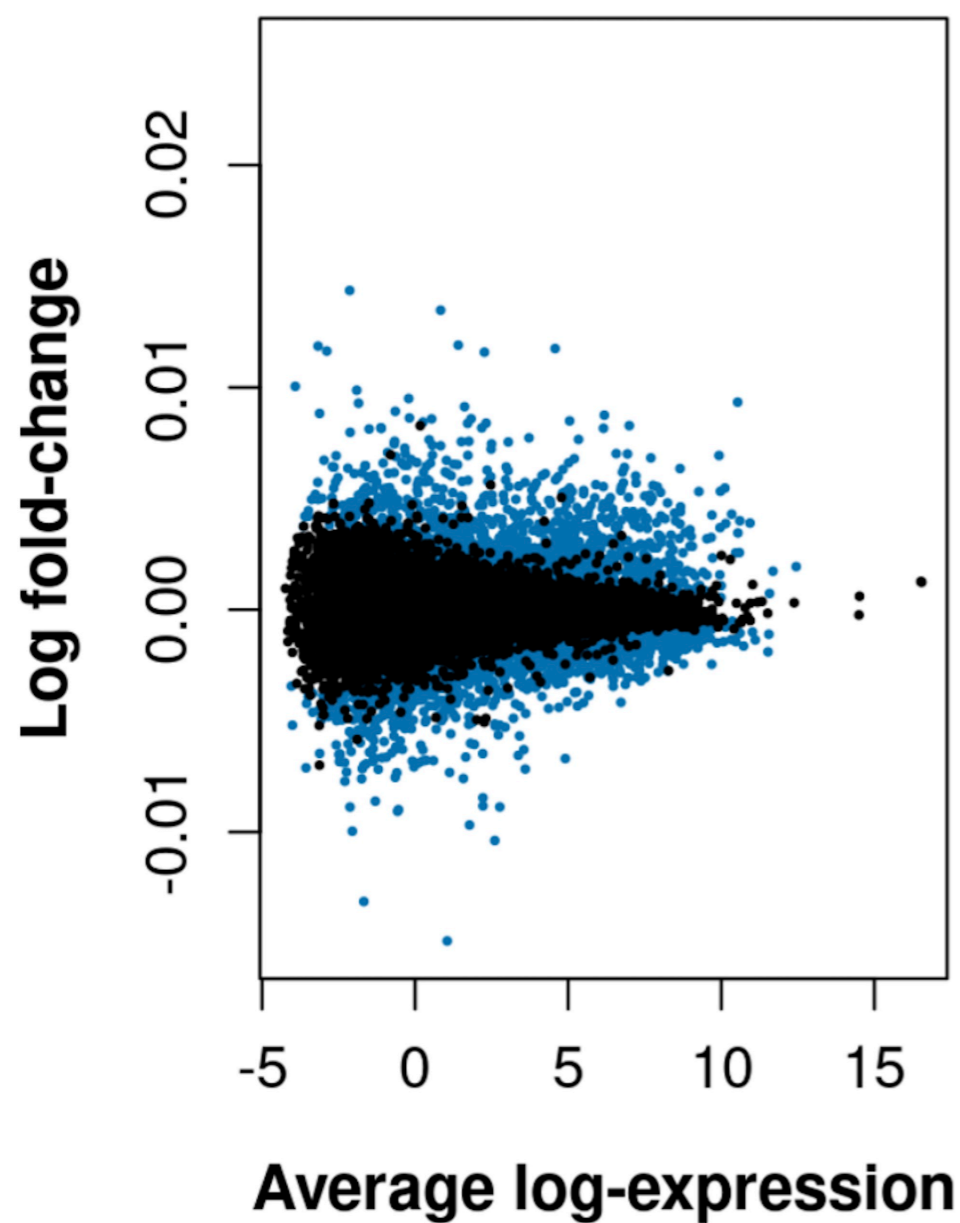


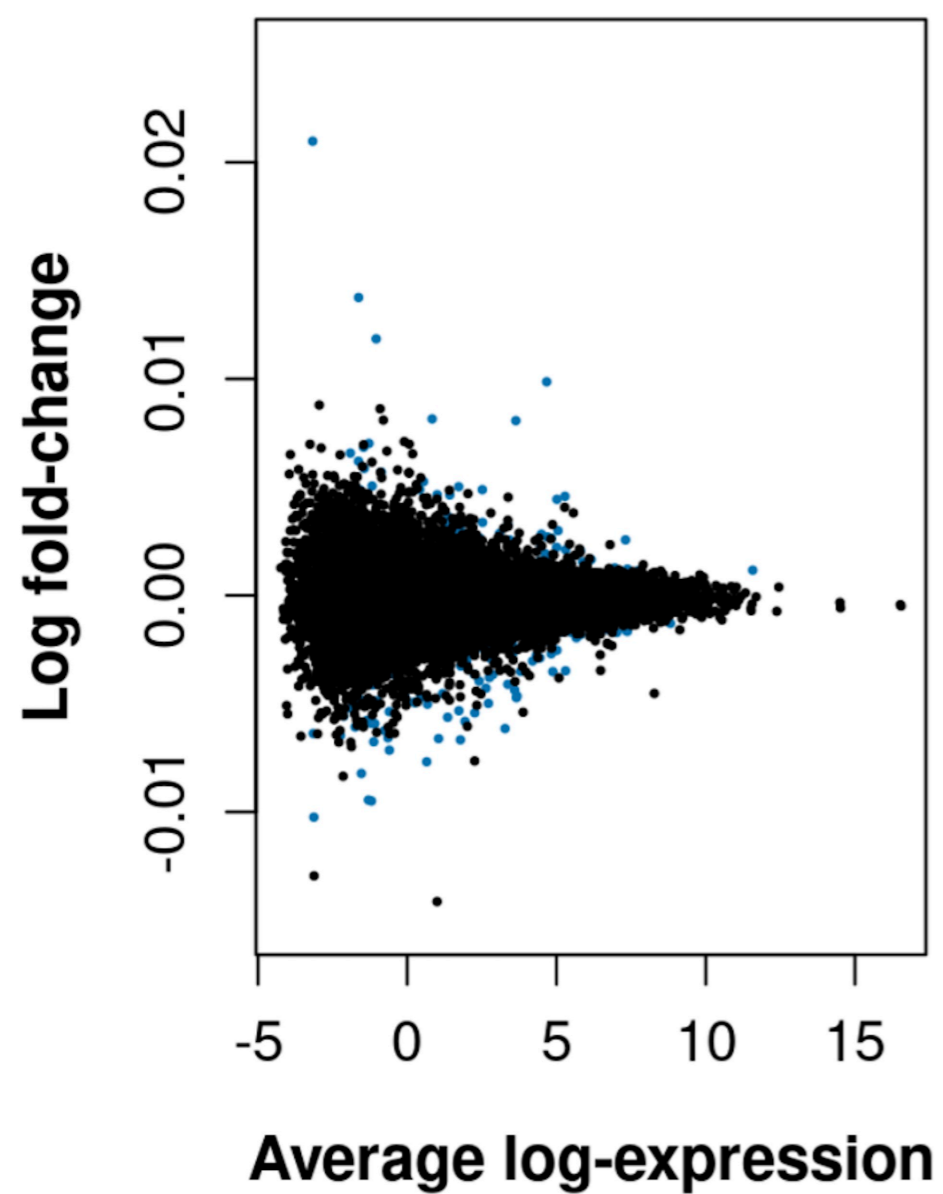
Figure E3

DGE**(A)**

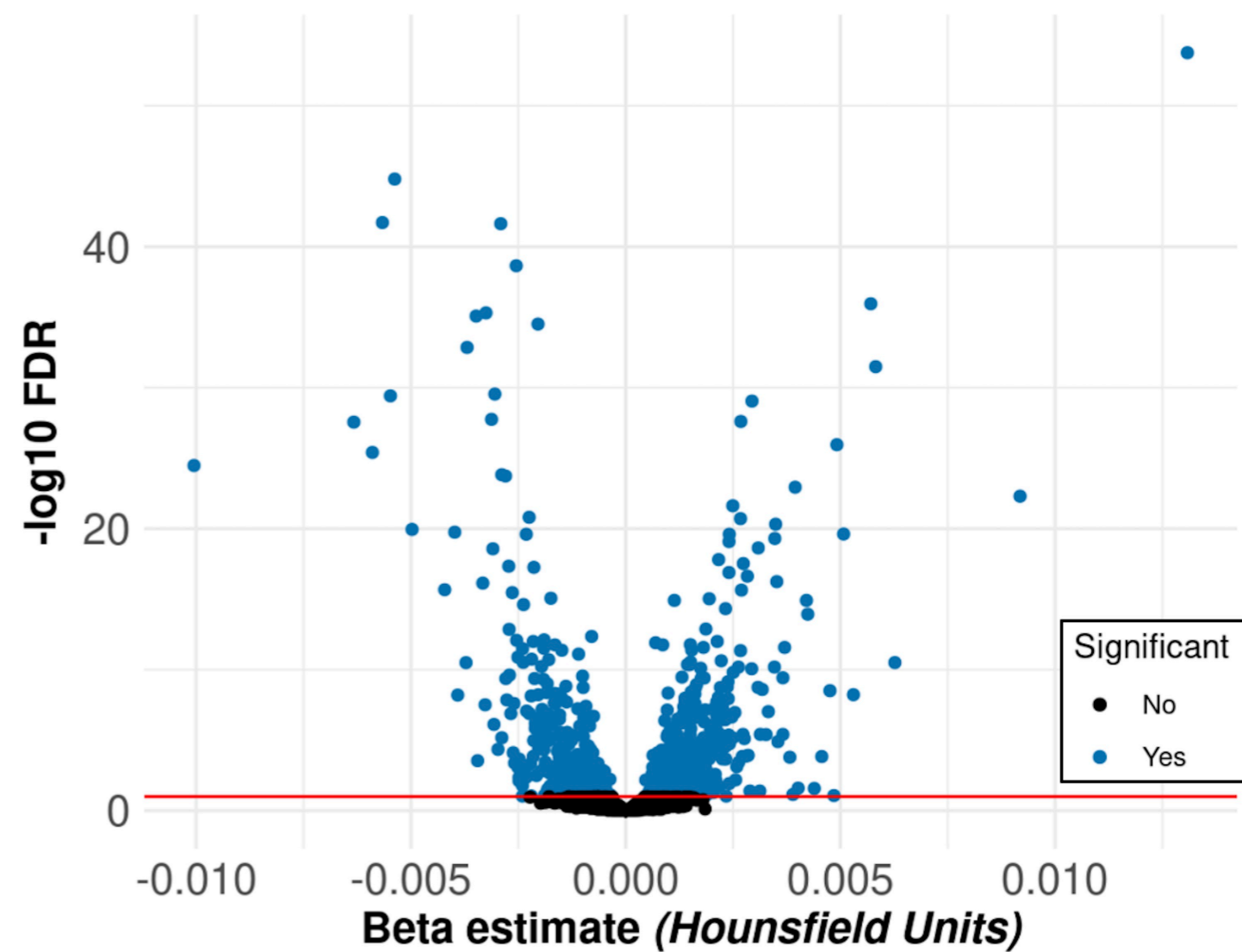
No BMI adjustment

**(B)**

BMI adjustment

**PROTEIN****(C)**

No BMI adjustment

**(D)**

BMI adjustment

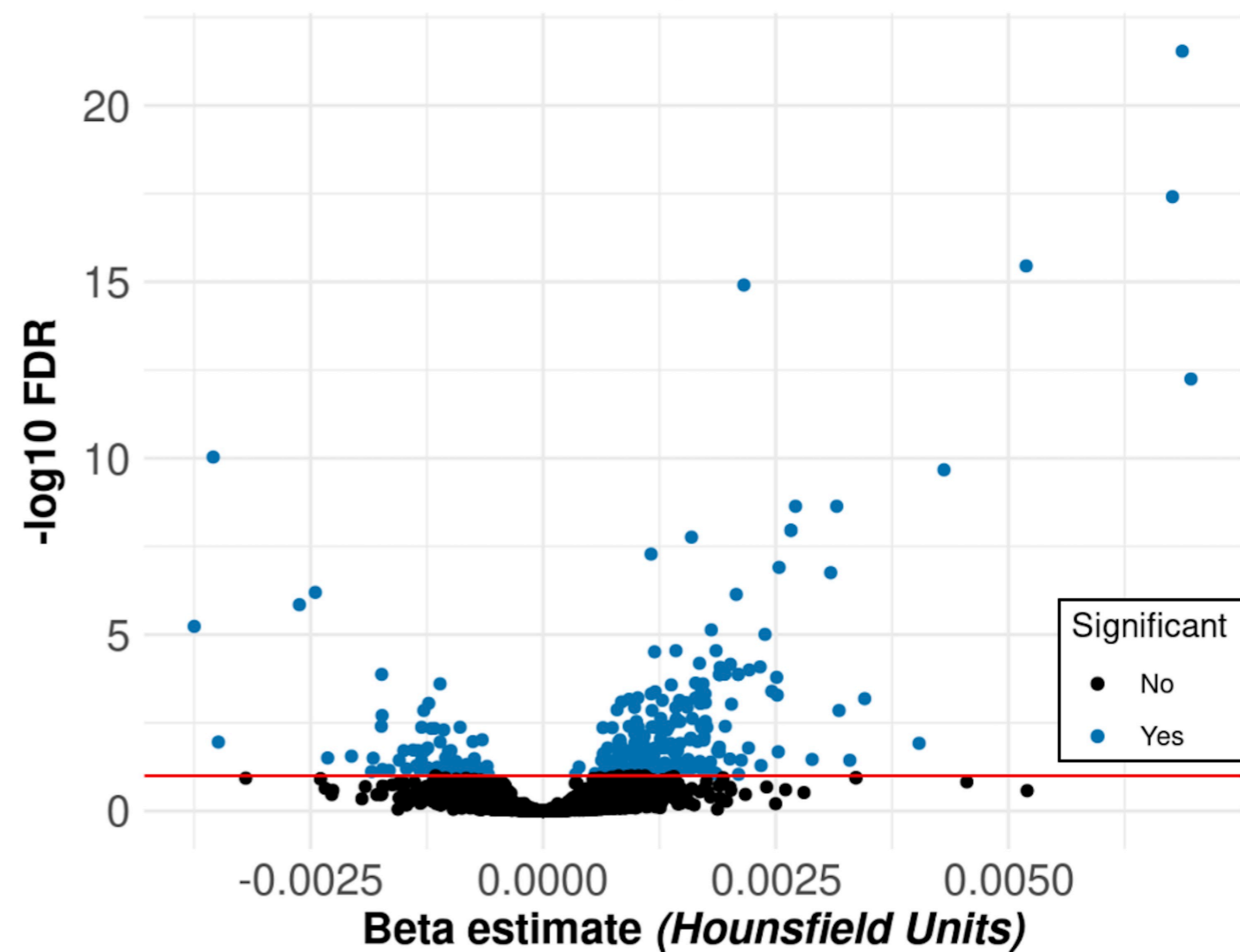


Figure E4

Confounders

BMI

Emphysema

**Gene expression
or protein levels**

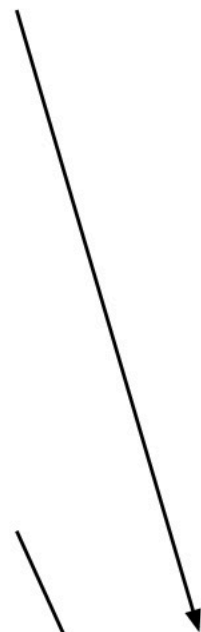
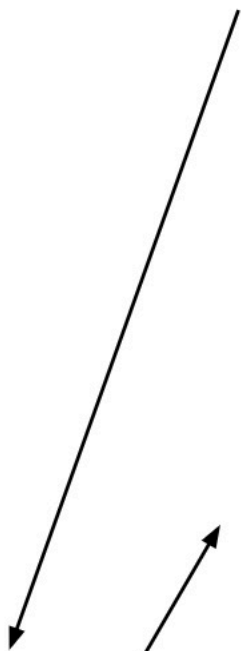
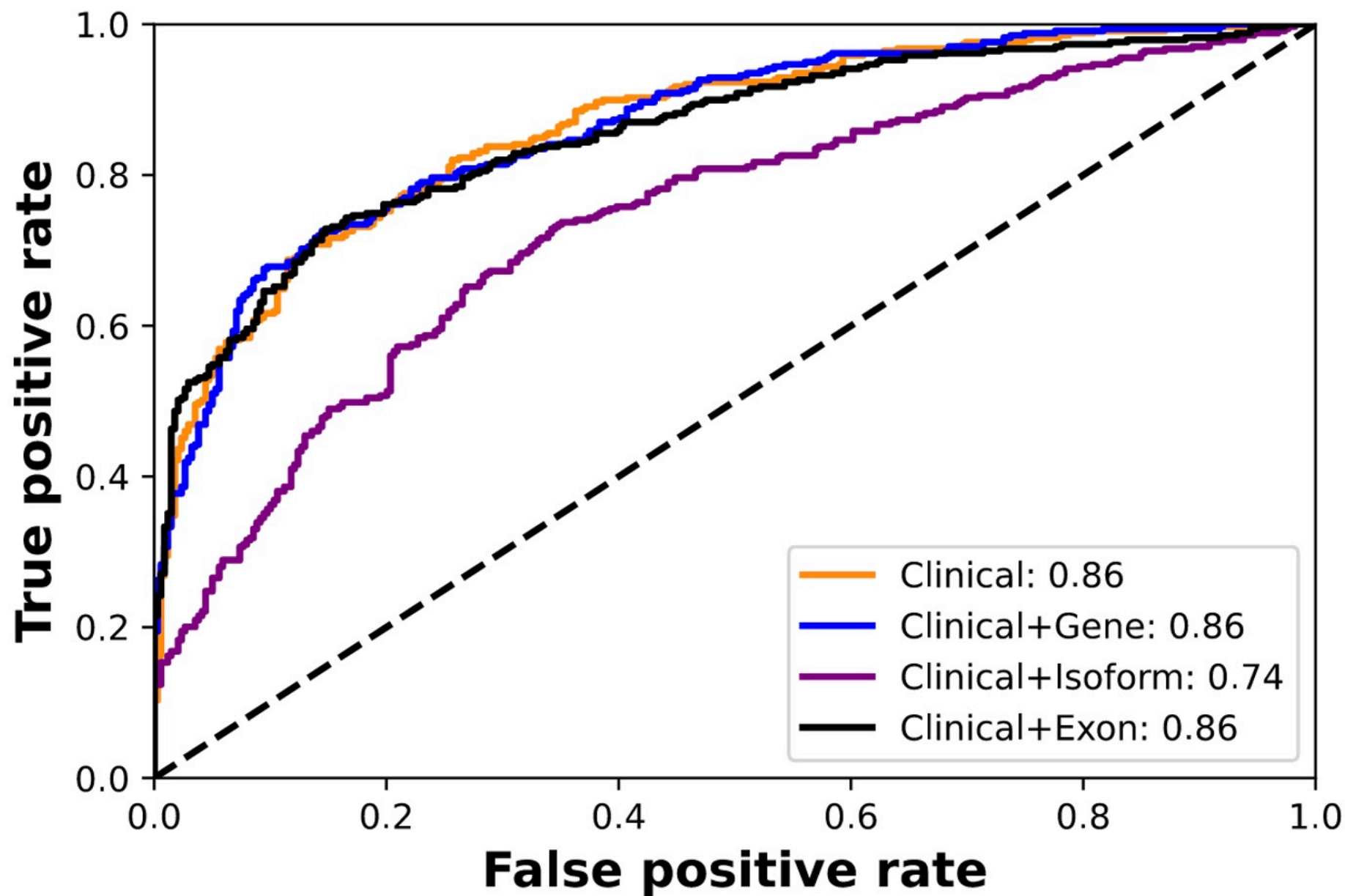


Figure E5

Model AUROC comparison

Upper versus lower tertiles of adjusted perc15 density



	Clinical	Clinical+Gene	Clinical+Isoform
Clinical+Gene	0.97		
Clinical+Isoform	< 0.001	< 0.001	
Clinical+Exon	0.26	0.27	< 0.001