

1 **Mechanistic view on the influence of fluctuations in outdoor temperature on the worsening**  
2 **of the course of the disease and hospitalizations associated with the SARS-CoV-2 Omicron**  
3 **wave in 2022 in the Tomsk region, Russia**

4  
5  
6 **Authors:** Ishmatov A.N.<sup>1\*</sup>, Bart A.A.<sup>1</sup>, Yakovlev S.V.<sup>1</sup>

7  
8 **Addresses:** <sup>1</sup> V.E. Zuev Institute of Atmospheric Optics SB RAS, Academician Zuev square, 1,  
9 Tomsk, Russia, 634055

10  
11 **Corresponding author:** Alexander Ishmatov

12 **E-mail:** ishmatoff@centercem.ru; ishmatoff@rambler.ru

13  
14  
15 **Abstract**

16 It is well known that low air temperatures negatively affect the human respiratory system and  
17 can suppress protective mechanisms in airways epithelial cells.

18  
19 In this study, we put forward the hypothesis that the ‘compromised airway epithelium’ of  
20 infected persons can be extremely sensitive to external influences and therefore can be used as an  
21 “indicator” and serve to investigate the impact of low air temperatures (as and other external  
22 factors) on the respiratory system.

23  
24 Here we supposed that a short-term impact of drop in outdoor temperature on the ‘compromised  
25 airway epithelium’ should lead to increased symptoms and severity of the disease.

26  
27 We have analyzed a short-term impact of the air temperature drop on the worsening of disease in  
28 patients with COVID-19 (indicated by bursts of daily hospitalizations), which fell on the main  
29 epidemic wave in 2022 associated with SARS-CoV-2 Omicron variant.

30 It was found that even a small and/or short-term impact of drop in outdoor daily temperatures  
31 can lead to increased symptoms and severity of the disease (COVID-19).

32  
33 We have identified 14 characteristic points (days) where the temperature drop was more than 3  
34 degrees during the main pandemic wave in 2022. It was shown that each characteristic points  
35 clearly associated with characteristic bursts in the number of daily hospitalizations with a time  
36 lag of 1-2 days.

37  
38 Thus, it was found that the results of the study can be used in predicting a sudden increase in the  
39 number of hospitalizations, which can be used to timely warn clinics and medical hospitals for  
40 an increase in the number of seriously ill patients.

41  
42 The findings can be used to improve systems to prevent additional risks connected with impact  
43 of drop in air temperature on worsening disease in patients and infected people who do not have  
44 or have mild or subtle symptoms of the disease – especially during an epidemic or pandemic  
45 wave.

46  
47 **Keywords:**

48 **Compromised airway epithelium; COVID-19; Air temperature; Hospitalizations**

NOTE: This preprint reports new research that has not been certified by peer review and should not be used to guide clinical practice.

## 50 Introduction

51 Novel coronavirus disease (COVID-19) is a respiratory infection caused by severe acute  
52 respiratory syndrome coronavirus 2 (SARS-CoV-2). COVID-19 is a complex disease with  
53 clinical responses varying from asymptomatic to severe with catastrophic respiratory failure and  
54 death (Bridges et al., 2022). The COVID-19 pandemic has resulted in an extraordinary incidence  
55 of morbidity and mortality, with 645 million confirmed cases and 6.6 million deaths worldwide  
56 (<https://covid19.who.int/>).

57  
58 During the natural evolution of the COVID-19 pathogen, dominant variants emerge that account  
59 for most new infections. The Omicron variant has become the dominant agent of the wave of the  
60 COVID-19 pandemic in the beginning of 2022 (Del Rio & Malani, 2022).

61  
62 It is well known that meteorological factors may influence the incidence of many infectious  
63 diseases. It has been suggested that the weather conditions has contributed to spreading the  
64 SARS-CoV-2 as a result of the same drivers that contribute to the occurrence of respiratory  
65 viruses, including seasonal influenza and coronaviruses (see related reviews in (Xie & Zhu,  
66 2020; Christophi et al., 2021; Kaplin et al., 2021; Nichols et al., 2021)).

67  
68 It was assumed that the dynamics of the COVID-19 pandemic suggests that a high percentage of  
69 susceptible people at the beginning of the pandemic means that the effect of the weather was  
70 relatively small, but this effect increases in next years as the SARS-CoV-2 becomes endemic and  
71 the population's susceptibility to the virus declines (Baker et al., 2020; Nichols et al., 2021).

72  
73 The seasonality of respiratory viruses and influenza has been extensively researched and  
74 continues to be investigated. Specifically, ambient temperature is considered to be the key  
75 climate factor that affects seasonality of respiratory infections. Nevertheless, possibly due to the  
76 differences in latitudes and climate regions, the relationship between ambient temperature and  
77 respiratory infections was not consistent. Seasonality of respiratory viruses commonly connected  
78 with cold seasons in the Northern Hemisphere and wet seasons in tropical countries – these  
79 findings provide a simple climate-based model rooted in empirical data that accounts for the  
80 diversity of seasonal influenza patterns: “cold-dry” and “humid-rainy” (see related reviews in  
81 (Eccles, 2002b; Lofgren et al., 2007; Lipsitch and Viboud, 2009; Tamerius et al., 2013;  
82 Moriyama et al., 2020; Qi et al., 2022; Li et al., 2022)).

83  
84 The seasonality of seasonal coronaviruses has been examined too in many countries across the  
85 world and showed seasonal patterns similar to influenza and respiratory syncytial virus (RSV) in  
86 temperate climates (see review in (Li et al., 2020; Nichols et al., 2021)). The study by Nichols et  
87 al. (2021) has found that seasonal coronavirus infections in England and Wales have a broadly  
88 similar distribution to influenza A and human bocavirus infections. It has been suggested that  
89 forecasting based on weather and climatic conditions (global radiation, relative and/or absolute  
90 humidity, air temperature, sunshine (hours per day), dewpoint temperature, precipitation and  
91 etc.) might help in preparing health care systems and populations to better protect those most at  
92 risk from serious complications from becoming infected (Scafetta, 2020; Nichols et al., 2021).

93  
94 It is important to note that while the many studies show associations between some weather  
95 parameters and respiratory infections (including COVID-19) it is recognized that the drivers of  
96 infection and seasonal epidemics involve combined effects of physical, physiological, social and  
97 behavioral elements (Bontempi, 2020; Ishmatov, 2020a; Bontempi and Coccia, 2021; Culqui  
98 et al., 2022). Moreover, many of the weather factors auto-correlate to some extent because of  
99 their natural relationships in the environment – for example, relative humidity is influenced by  
100 temperature; temperature can be influenced by sunshine and etc. (Nichols et al., 2021).

102 Despite a lot of research in this area the seasonality (predictable fluctuation or pattern that recurs  
103 or repeats over a one-year period) of COVID-19 is still poorly understood and insufficiently  
104 taken into consideration (D'Amico et al., 2022).

105  
106 In this study, we put forward the hypothesis of the 'compromised airway epithelium' and the  
107 impact of outdoor temperature as the last straw in the disease course.

108  
109 The hypothesis is as follows the airway epithelium of an infected person at the first stages of the  
110 infection/disease and in the mild and moderate course of the disease (when there are no  
111 symptoms or they are insignificant) partially loses its functionality. In such a state, the balance of  
112 the functioning of the airway epithelium (as well as its defense mechanisms) can be easily  
113 disturbed by different external triggers. This can lead to an even greater weakening of the  
114 protective functions in the airway epithelium and, as a result, to the uncontrolled development of  
115 the infection.

116  
117 Thus, here we suppose that even a small and/or short-term impact of drop in outdoor temperature  
118 (as well as other factors) on the 'compromised airway epithelium' should lead to increased  
119 symptoms and severity of the disease.

120  
121 **The aim of the study is to find the relationship between the influence of outdoor**  
122 **temperature (as one of the weather factors) and the increased symptoms and the**  
123 **deterioration of the course of diseases during pandemic wave associated with the SARS-**  
124 **CoV-2 Omicron strain in 2022.**

125  
126 Here we based on the mechanistical point of view on how the air temperature could affect the  
127 respiratory system and lead to the worsening of the course of the disease and hospitalizations  
128 associated with the COVID-19. It is well known that that the respiratory epithelial cells can be  
129 critically cooled by inhaled cold/cool air and it can lead to the reduction of antiviral response in  
130 the cells, the inhibition of mucociliary clearance (Tyrrell and Parsons, 1960; Salah et al., 1988;  
131 Eccles, 2002b; Mourtzoukou and Falagas, 2007; Makinen et al., 2009; Foxman et al., 2015;  
132 2016; Iwasaki et al., 2017). Foxman et al. (Iwasaki lab) (Foxman et al., 2015; Foxman et al.  
133 2016) (Iwasaki et al., 2017) had clearly shown the mechanism of reducing the immune response  
134 of cells in the respiratory tract of mice during cooling the cells. The ability of various strains of  
135 rhinoviruses replicate more better in the respiratory epithelial cells at 33 °C than at the normal  
136 lung temperature of 37 °C. It is also important to note here the mechanism of influence of  
137 personal and outdoor temperature exposure during cold and warm seasons on lung function and  
138 respiratory symptoms in COPD which was described by Scheerens et al. (2022).

139  
140  
141 **Methods**

142 We limited our analyses to the city of Tomsk and the Tomsk agglomeration. Tomsk (56°30'N  
143 84°58'E) is a city and the administrative center of Tomsk Oblast in Russia, located on the Tom  
144 River. The city's population is 570776 at the end of 2021, with a population density of 1937  
145 person/km<sup>2</sup>. Tomsk has a humid continental climate barely escaping a subarctic classification.  
146 The annual average temperature is +1.2 °C. The total annual rainfall is 587 millimeters  
147 (URL:<https://en.wikipedia.org/wiki/Tomsk> (date of access: Jun 1, 2022)).

148  
149 We considered the pandemic period from January 1st, 2022, to March 31st, 2022, associated  
150 with the SARS-CoV-2 Omicron strain, the dominant agent of the new wave of the COVID-19  
151 pandemic in 2022 in the region.

152

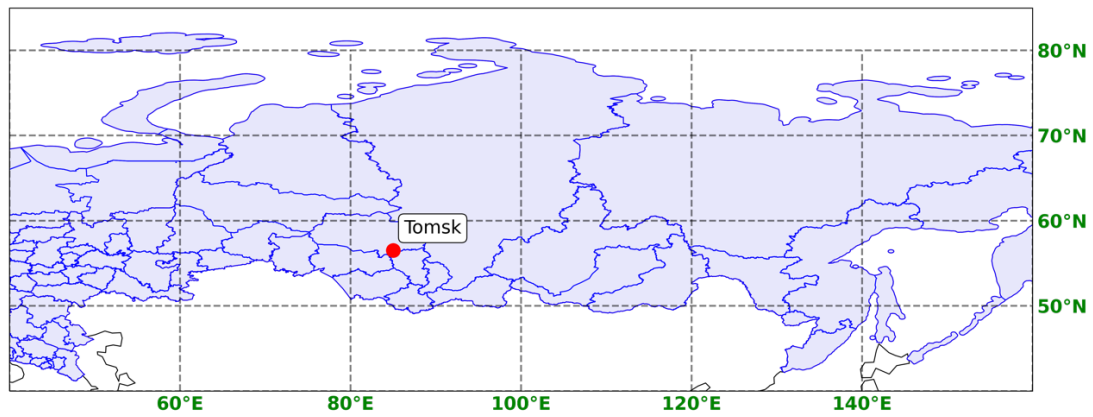


Figure 1 – Map of Russia (Tomsk Oblast)

The data of OpenStreetMap® was used, licensed under the Open Data Commons Open Database License (ODbL) by the OpenStreetMap Foundation (OSMF) and the Creative Commons Attribution-ShareAlike 2.0 license (CC BY-SA 2.0).

153

154 The data on measured outdoor temperatures were collected from official reports on weather  
155 status are issued by Regional Directorates of Hydrometeorological Service in Russia:  
156 <http://www.meteorf.ru/about/structure/local/>.

157

158 To analyze daily dynamics in the symptom aggravation and disease severity, we used data on  
159 daily hospitalizations associated with COVID-19. The statistical data on COVID-19  
160 hospitalizations were obtained from open official sources for Tomsk and the Tomsk region  
161 (URL: <https://gogov.ru/covid-hosp-stats/tms#data> (In Russian - date of access: Jun 1, 2022)).  
162 Here we hypothesized that short-term fluctuations in outdoor temperature may be associated  
163 with an increase in the symptoms of patients with COVID-19 and are associated with the  
164 presence of pneumonia at the time of diagnosis of COVID-19 in hospitals (for those cases that  
165 fall into official statistics). In our work, we hypothesized that many COVID-19 pneumonia  
166 diagnoses are triggered by activity in the preceding hours.

167

168 Using a control group of patients for the analysis is a difficult task. And we wondered what  
169 would be the best representative of the population that set the precedents? – The simple answer  
170 was the cases themselves. The case-crossover study design is an adaptation of the case-control  
171 study, in which cases serve as their own controls, and is well suited to the study of transient risk  
172 factors. We used a parameter of hospitalization and pneumonia as a proxy for the severity of  
173 COVID-19 symptoms. Although this may be justified on the grounds that the most severe forms  
174 of COVID-19 usually lead to pulmonary manifestations on their own (we did not have any direct  
175 measures of severity or a confirmed severity index). We have adapted this approach; this is the  
176 same approach that has been proposed for the analysis of cases of heart attacks and severe illness  
177 by Maclure (1991), this method was also used in a recent study on individual emergency  
178 department visits for COVID-19 (Lavigne, et al., 2022).

179

180

## 181 **Results and Discussion**

182 A graph of outdoor temperatures fluctuations by days is shown in Figure 2. The number of  
183 hospitalizations by days is shown in Figure 3.

184

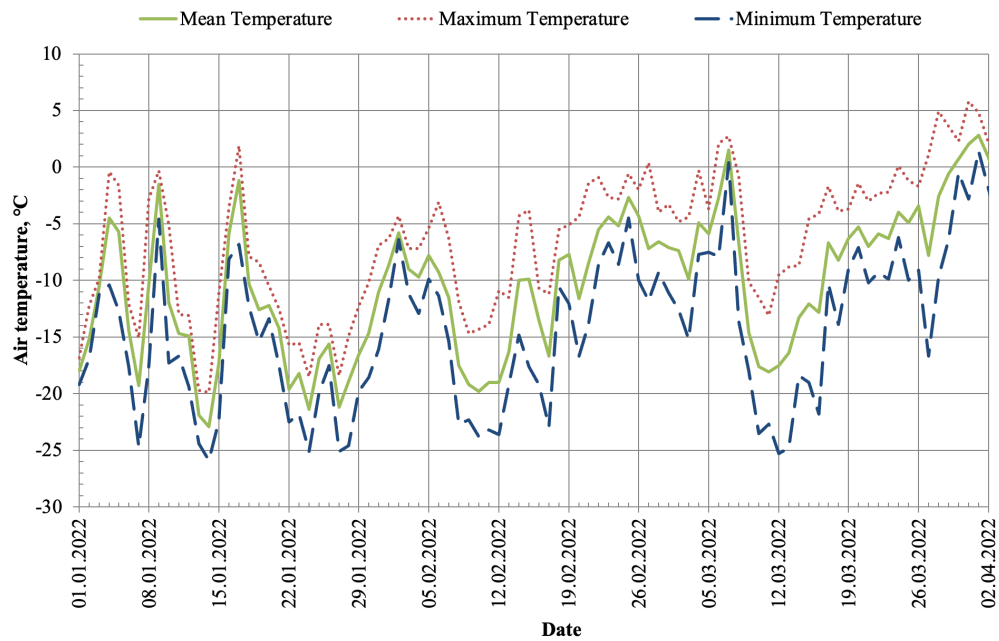


Figure 2 – Outdoor daily temperature in Tomsk

185

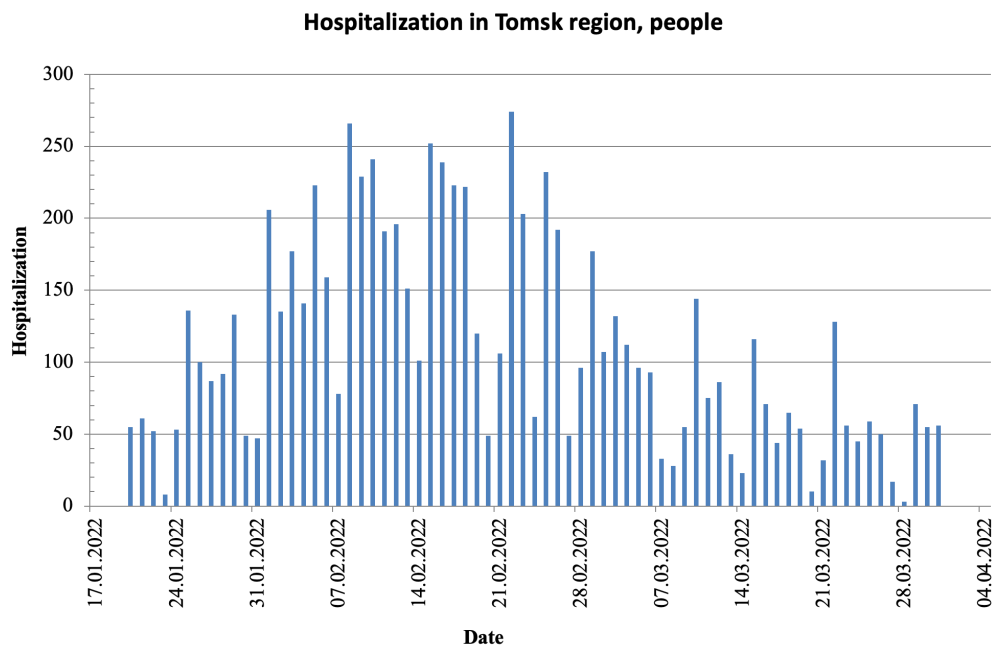


Figure 3 – Daily hospitalizations in Tomsk

186

187 The wave of hospitalizations (Fig. 3) from January 20 (wave start) to March 31 (wave end) can  
188 be clearly associated with the main pandemic wave, and here we propose to consider this wave  
189 as a “main carrier wave” (see below), which depends on the emergence of a new strain and other  
190 global factors, including air temperature too.

191

192 From figure 2 it follows that the temperature was always low (below comfortable values for a  
193 person – this corresponds to the time of year for this region), which in itself is the main  
194 influencing factor. Therefore, here we consider only temperature fluctuations (temperature drop)  
195 as an additional factor that can make some adjustments to the health condition of infected  
196 individuals and, as a result, to “wave beats/bursts” that appear on this carrier wave (pandemic  
197 wave) in form of frequency modulation. **Conventionally, this approach can be compared with**



198 **the principle of superposition of waves — when a "ripple"(frequency modulation) is**  
 199 **superimposed on a carrier wave.**

200  
 201 As well as in wave dynamics, we initially believe that the potential of secondary bursts  
 202 (modulation) has limited values (and we found confirmation of this, see below (table 1)). For  
 203 example, if a surge is caused by some factor, then the subsequent factor may affect this surge too  
 204 (the principle of superposition of waves), but this influence may not be so pronounced as the first  
 205 factor influence was (the factor that acted as an initial trigger).

206  
 207 In any case, many factors can act as triggers for wave modulation. Moreover, all the factors can  
 208 act in a joint manner and overlap each other. For example, one factor (for example, temperature,  
 209 or air humidity, or an air pollutant, or a weather parameter, etc.) triggers a surge in  
 210 diseases/hospitalization wave, and then another factor appears and maintains this local surge on  
 211 the main\ carrier wave.

212  
 213 At this stage, we have chosen the task of assessing the influence of air temperature as a simple  
 214 and obvious acting factor. We believe that the effect of temperature should have an obvious and  
 215 fast effect – and we found evidence for this in the results of the performed analysis (see below).

216  
 217 At the first stage, we looked for obvious and strong changes\drops in the daily temperature, and  
 218 then compared them with the number of hospitalizations falling on those days, taking into  
 219 account a possible time lag of several hours or days.

220  
 221 For the initial determination of the time lag, we chose the most characteristic points in the fig.2,  
 222 where the temperature changed very strongly during one or two days, – that is, where such  
 223 influence (drop in air temperature) is likely to be the most noticeable (even taking into account  
 224 the other influencing factors). Since such a “cold” impact can and should affect the state of the  
 225 “compromised” respiratory system (in accordance with the hypothesis put forward – see above).

226  
 227 In the next step, we compared changes in hospital admissions (fig. 3), which could correspond to  
 228 the effects of temperature changes. Here, hospitalizations serve as an indicator of the severity of  
 229 the disease and the deteriorating health of infected individuals. Thus, thanks to this preliminary  
 230 stage, we found that the time lag is no more than 1-2 days.

231  
 232 Next, we carried out a detailed analysis of each change (drops) in ambient temperatures and  
 233 analysis of each spike in the number of daily hospitalizations. The analysis is shown in table 1.

234  
 235  
 236 **Table 1– Characteristic points in fluctuations in ambient daily temperatures and daily**  
 237 **hospitalizations**  
 238

No	Characteristic of temperature drops by days (°C)				Characteristic peaks in the growth of hospitalizations by days	
1	Day	Tmean,	Tmin	Tmax	Day	Cases
	17.01.2022	-1,2	-6,8	1,9	20.01.2022	55
	18.01.2022	-10,3	-12,3	-7,9	<b>21.01.2022</b>	<b>61</b>
	<b>19.01.2022</b>	<b>-12,6</b>	<b>-15,4</b>	<b>-8,4</b>	22.01.2022	52
	20.01.2022	-12,2	-13,4	-10,5	23.01.2022	8
	Tdif	<b>11.4</b>	<b>8.6</b>	<b>6.5</b>	<b>Diff</b>	<b>6</b>
					<b>Diff, %</b>	<b>??</b>

		*statistics data available only since 20 January – it is difficult to fully characterize this peak	
2	20.01.2022 -12,2 -13,4 -10,5 21.01.2022 -14,2 -17,5 -12,5 <b>22.01.2022 -19,6 -22,5 -15,7</b> 23.01.2022 -18,2 -21,8 -15,5 <b>24.01.2022 -21,4 -25,1 -18,5</b> 25.01.2022 -16,9 -19,9 -13,9 Tdif <b>9.2 11.7 8</b>	23.01.2022 8 <b>24.01.2022 53</b> <b>25.01.2022 136</b> 26.01.2022 100 27.01.2022 87 28.01.2022 92 Diff <b>128</b>	
3	26.01.2022 -15,6 -17,5 -13,9 <b>27.01.2022 -21,2 -25,1 -18,4</b> 28.01.2022 -18,9 -24,6 -14,9 29.01.2022 -16,6 -19,8 -12,3 30.01.2022 -14,7 -18,6 -10,2 Tdif <b>5.6 7.6 4.5</b>	26.01.2022 100 27.01.2022 87 28.01.2022 92 <b>29.01.2022 133</b> 30.01.2022 49 Diff <b>50</b>	
4	30.01.2022 -14,7 -18,6 -10,2 31.01.2022 -11 -16,1 -6,9 01.02.2022 -8,7 -11,7 -6,3 02.02.2022 -5,8 -6,4 -4,3 *NO temperature changes – another factor was a trigger.	30.01.2022 49 31.01.2022 47 <b>01.02.2022 206</b> 02.02.2022 135 Diff <b>159</b>	
5	02.02.2022 -5,8 -6,4 -4,3 <b>03.02.2022 -9 -11,2 -7,2</b> <b>04.02.2022 -9,7 -12,9 -7,2</b> 05.02.2022 -7,8 -9,9 -5,4 Tdif <b>3.9 6.5 2.9</b>	02.02.2022 135 <b>03.02.2022 177</b> 04.02.2022 141 <b>05.02.2022 223</b> 06.02.2022 159 Diff <b>82</b> *the temperature is not a main trigger for a surge in hospital admissions, but it may be as an additional factor	
6	06.02.2022 -9,3 -11,4 -3,1 07.02.2022 -11,5 -15,4 -6,3 <b>08.02.2022 -17,5 -22,7 -11,9</b> 09.02.2022 -19,2 -22,3 -14,7 10.02.2022 -19,8 -23,8 -14,3 11.02.2022 -19 -23,2 -13,9 12.02.2022 -19 -23,6 -10,9 Tdiff <b>8.2 11.3 8.8</b>	07.02.2022 78 <b>08.02.2022 266</b> 09.02.2022 229 10.02.2022 241 11.02.2022 191 12.02.2022 196 Diff <b>188</b>	
7	14.02.2022 -10 -14,8 -4,3 <b>15.02.2022 -9,9 -17,6 -3,8</b> <b>16.02.2022 -13,5 -19,2 -10,7</b> <b>17.02.2022 -16,7 -22,9 -11,2</b> 18.02.2022 -8,2 -10,6 -5,5 Tdiff <b>6.8 8.1 7.4</b>	14.02.2022 101 <b>15.02.2022 252</b> <b>16.02.2022 239</b> <b>17.02.2022 223</b> <b>18.02.2022 222</b> 19.02.2022 120 Diff <b>141</b>	

					*the temperature is not a main trigger for a surge in hospital admissions, but it may be as an additional factor	
8	18.02.2022	-8,2	-10,6	-5,5	20.02.2022	49
	19.02.2022	-7,7	-12,1	-5,1	21.02.2022	106
	<b>20.02.2022</b>	<b>-11,6</b>	<b>-16,7</b>	<b>-4,4</b>	<b>22.02.2022</b>	<b>274</b>
	21.02.2022	-8,5	-13,9	-1,4	23.02.2022	203
	22.02.2022	-5,5	-8,6	-0,9	24.02.2022	62
	23.02.2022	-4,4	-6,7	-2,7	Diff	<b>235</b>
	Tdiff	<b>3.4</b>	<b>6.6</b>	<b>1.1</b>		
9	23.02.2022	-4,4	-6,7	-2,7	24.02.2022	62
	24.02.2022	-5,2	-8,6	-2,8	<b>25.02.2022</b>	<b>232</b>
	25.02.2022	-2,7	-4,5	-0,6	<b>26.02.2022</b>	<b>192</b>
	<b>26.02.2022</b>	<b>-4,3</b>	<b>-10</b>	<b>-2</b>	27.02.2022	49
				Diff	<b>170</b>	
	*NO temperature changes - another factor was a trigger ()					
10	25.02.2022	-2,7	-4,5	-0,6	27.02.2022	49
	<b>26.02.2022</b>	<b>-4,3</b>	<b>-10</b>	<b>-2</b>	<b>28.02.2022</b>	<b>96</b>
	<b>27.02.2022</b>	<b>-7,2</b>	<b>-11,8</b>	<b>0,4</b>	<b>01.03.2022</b>	<b>177</b>
	28.02.2022	-6,6	-9,3	-4	02.03.2022	107
	Tdiff	<b>4.5</b>	<b>7.3</b>	<b>3.4</b>	Diff	<b>128</b>
11	28.02.2022	-6,6	-9,3	-4	02.03.2022	107
	01.03.2022	-7,1	-11,1	-3,3	<b>03.03.2022</b>	<b>132</b>
	<b>02.03.2022</b>	<b>-7,4</b>	<b>-12,6</b>	<b>-4,8</b>	<b>04.03.2022</b>	<b>112</b>
	<b>03.03.2022</b>	<b>-9,9</b>	<b>-15,2</b>	<b>-4,4</b>	05.03.2022	96
	04.03.2022	-4,9	-7,7	-0,3	06.03.2022	93
	Tdiff	<b>3.3</b>	<b>5.9</b>	<b>0.4</b>	Diff	<b>25</b>
					*the temperature is not a main trigger for a surge in hospital admissions, but it may be as an additional factor	
12	07.03.2022	1,5	0,4	2,7	08.03.2022	28
	<b>08.03.2022</b>	<b>-6,7</b>	<b>-13,6</b>	<b>-0,8</b>	<b>09.03.2022</b>	<b>55</b>
	<b>09.03.2022</b>	<b>-14,6</b>	<b>-18</b>	<b>-10,1</b>	<b>10.03.2022</b>	<b>144</b>
	<b>10.03.2022</b>	<b>-17,6</b>	<b>-23,5</b>	<b>-11,5</b>	11.03.2022	75
	11.03.2022	-18,1	-22,7	-13,1	12.03.2022	86
	12.03.2022	-17,5	-25,3	-9,5	13.03.2022	36
	Tdiff	<b>8-19</b>	<b>14-24</b>	<b>3-14</b>	Diff	<b>116</b>
13	13.03.2022	-16,4	-24,8	-8,8	14.03.2022	23
	14.03.2022	-13,3	-18,4	-8,7	<b>15.03.2022</b>	<b>116</b>
	15.03.2022	-12,1	-19	-4,6	16.03.2022	71
	16.03.2022	-12,8	-21,8	-4,1	17.03.2022	44
	*NO temperature changes - another factor was a trigger ()				Diff	<b>93</b>
14	17.03.2022	-6,7	-10,3	-1,7	17.03.2022	44
	<b>18.03.2022</b>	<b>-8,2</b>	<b>-13,9</b>	<b>-3,9</b>	<b>18.03.2022</b>	<b>65</b>



	19.03.2022	-6,3	-9	-3,7	<b>19.03.2022</b>	<b>54</b>
	Tdiff	<b>1.5</b>	<b>3,6</b>	<b>2.2</b>	20.03.2022	10
					Diff	<b>11</b>
					*the temperature is not a main trigger for a surge in hospital admissions, but it may be as an additional factor	
15	20.03.2022	-5,3	-7,1	-1,4	20.03.2022	10
	<b>21.03.2022</b>	<b>-7</b>	<b>-10,2</b>	<b>-3</b>	<b>21.03.2022</b>	<b>32</b>
	22.03.2022	-5,9	-9,3	-2,3	<b>22.03.2022</b>	<b>128</b>
	23.03.2022	-6,3	-9,9	-2,2	23.03.2022	56
	Tdiff	<b>1.7</b>	<b>3.1</b>	<b>1.6</b>	Diff	<b>118</b>
					*the temperature is not a main trigger for a surge in hospital admissions, but it may be as an additional factor	
16	24.03.2022	-4	-6,2	0,1	24.03.2022	45
	<b>25.03.2022</b>	<b>-4,9</b>	<b>-10</b>	<b>-1,2</b>	<b>25.03.2022</b>	<b>59</b>
	26.03.2022	-3,4	-9,1	-1,7	<b>26.03.2022</b>	<b>50</b>
	Tdiff	<b>4</b>	<b>3.8</b>	<b>1,3</b>	27.03.2022	17
					Diff	<b>14</b>
					*the temperature is not a main trigger for a surge in hospital admissions, but it may be as an additional factor	
17	26.03.2022	-3,4	-9,1	-1,7	28.03.2022	3
	<b>27.03.2022</b>	<b>-7,8</b>	<b>-16,7</b>	<b>1,1</b>	<b>29.03.2022</b>	<b>71</b>
	28.03.2022	-2,6	-9,7	4,9	30.03.2022	55
	29.03.2022	-0,6	-6,4	3,6	31.03.2022	56
	Tdiff	<b>4.4</b>	<b>7.6</b>	<b>2.8</b>	01.04.2022	40
					Diff	<b>68</b>

239 Tmean – daily mean temperature, °C;  
 240 Tmin – daily minimum temperature, °C;  
 241 Tmax – daily maximum temperature, °C  
 242 Tdiff – temperature difference, °C  
 243 Diff – difference in daily hospitalizations.

244  
 245

246 Thanks to the obtained analysis, we have identified 14 characteristic points where the  
 247 temperature drop was more than 3 degrees (№ 1-3, 5-8, 10-17) (table 1)) – all of them were  
 248 associated with characteristic bursts in the number of daily hospitalizations with a time lag of 1-2  
 249 days.

250

251 In 8 characteristic points of those 14 (№1-3, 6, 8, 10, 12, 13) the temperature can be  
 252 characterized as a primary trigger (which acted as the main influencing factor).

253

254 In 6 characteristic points of those 14 (№5, 7, 11, 14-16) the temperature can be characterized as  
 255 an additional factor (joint influence with other acting factors).

256

257 In total, 17 characteristic surges in the number of daily hospitalizations were identified over the  
 258 entire period. Three of them (№3, 4, 9) had no connection with drop in daily temperature (the  
 259 temperature did not change in these days) and were associated with other factors.

260

261 The data from the table once again confirmed the initially found value of the time lag of the  
262 short-term effect of temperature drops on worsening of disease in infected individuals (indicated  
263 by bursts of daily hospitalizations) – it averaged 1-2 days.

264  
265 Thus, it was found that each characteristic points where the temperature drop was more than 3  
266 degrees can be clearly associated with bursts in the number of daily hospitalizations.

267  
268 It is important to note that since the pandemic started, many authors have analyzed the issue of  
269 impact of many factors (weather conditions, air pollution and etc.) on COVID-19 incidence,  
270 severity, and mortality, and literature linking to this issue has increased exponentially and now  
271 hundreds studies show the different results (see related reviews in (Kang et al., 2021; Prévost et  
272 al., 2021; Liang & Yuan, 2022; Mandal et al., 2022; McClymont & Hu, 2021; Mejdoubi et al.,  
273 2020; Runkle et al., 2020; To et al., 2021; Tripathi et al., 2022; Xie & Zhu, 2020; Carballo et al.,  
274 2022; Culqui et al., 2022; Ishmatov, 2022; Kang et al., 2021; Perone, 2022; Taylor et al., 2022)).  
275 Most of the studies are statistical and analyze the correlation between various influencing  
276 factors. Moreover, many studies use limited datasets and are subject to several confounders,  
277 requiring caution when interpreting these results.

278  
279 It is worth noting that today there are many studies of the correlation of weather factors and air  
280 temperature with COVID-19 in many countries and cities. Most of them agree that air  
281 temperature affects COVID-19 and authors describe some possible effects of air temperature on  
282 COVID-19 disease severity and transmission rates (see related reviews in (Kang et al., 2021;  
283 Prévost et al., 2021; Liang & Yuan, 2022; Mandal et al., 2022; McClymont & Hu, 2021;  
284 Mejdoubi et al., 2020; Runkle et al., 2020; Tripathi et al., 2022)).

285  
286 Most of the studies are statistical and have large-scale character – entire countries are studied,  
287 many variables are described simultaneously, and long periods are examined. Our study is based  
288 on a mechanistic approach – we did not just choose a parameter for correlation analysis, but  
289 proposed a clear and precise mechanism of how this parameter can affect and what this effect  
290 can lead to. Our study can be characterized by strong concretization of the chosen direction of  
291 research, – limited to one city (where the population is evenly exposed to the same impacts  
292 (conditionally) and one specific pandemic wave (when one strain of the virus prevails)). Perhaps  
293 this approach made it possible to discover the relationships and patterns in this study, which,  
294 perhaps, would not be so pronounced for large-scale study.

295

296

### 297 **Future directions and limitations**

298 Obviously, not every external influence can have the same pronounced effect as the effect of the  
299 air temperature. Sunlight, precipitation, humidity, wind speed and etc. – these are indicators that  
300 are difficult to consider and analyze, since it is now difficult to associate them with effects on the  
301 respiratory system, within the framework of a mechanistic approach proposed in this study.

302

303 Here it is important to consider the air humidity (as a main weather parameter). We examined  
304 this indicator in detail and came to the conclusion that it is difficult task for a separate analysis  
305 and a detailed study of this issue are required.

306

307 On the one hand the absolute humidity (AH) is directly related to air temperature. Relative  
308 humidity (RH) is not so clearly related to temperature, but with sudden changes in daily  
309 temperature, this relationship is direct (especially for continental climates). For example, the  
310 maximum moisture content possible in air varies with temperature and as a result, the variation  
311 of ambient temperature can significantly affects the ambient RH.

312

313 On the other hand, air humidity should affect the efficiency of heat and mass transfer in the  
314 respiratory tract – thereby affecting the cooling efficiency of the airways epithelial cells.  
315 Moreover, low RH should affect the effectiveness of mucosal drying and, as a consequence,  
316 affect the mucociliary clearance.

317  
318 But in any case, here relative humidity should always be considered together with temperature –  
319 since temperature (as well as humidity) plays a significant role in heat and mass transfer  
320 processes. This aspect (within the impact on COVID-19) need to be investigated in the future  
321 studies.

322  
323 It is important to note that the conception of the effect of “supersaturation in the airways” which  
324 was proposed in (Ishmatov, 2019; Ishmatov, 2020b) is most promising here – because it links  
325 temperature and RH into one mathematical function. The main sense of the supersaturation in the  
326 airways is that this effect depends simultaneously on both temperature and RH of inhaled air.  
327 Thus, temperature and RH are the parameters of one simple function (it is the effect of  
328 supersaturation) and no longer need to consider the separate influence of humidity or  
329 temperature on the human health.

330  
331 Cold, rainy or wet weather can induce supersaturated conditions in the airways. It was shown  
332 that supersaturation can lead to enhanced deposition of inhaled ambient aerosols, infectious  
333 aerosols and air pollutants in the human airways (Ishmatov, 2017a; Ishmatov, 2020b). Xu et al.  
334 (2021) also confirmed this aspect in the study with the help of numerical experiments.

335  
336 Moreover, role of effect of supersaturation in a critical cooling of local areas in the human upper  
337 airways was discussed, and this involves cold stress and reducing, as a consequence, the antiviral  
338 immune response of the airway epithelial cells. The additional acidification of epithelial lining  
339 fluid in the local areas of the respiratory tract was also considered. Such acidic stress may lead to  
340 destructive impacts on the respiratory cells and weakening of the defense mechanisms of the  
341 airways (Ishmatov, 2017b; Ishmatov, 2020b).

342  
343 According to the above, the supersaturation effect may be used in the future for predictions and  
344 analysis of the changing epidemiological situation (the first attempt was made in (Ishmatov,  
345 2017c)). However, these aspects are preliminary and need to be investigated in the future studies.

346  
347 In our opinion, of all potential influencing factors, air pollution fits the mechanistic approach  
348 proposed in this study. Air pollution here suggests the same effect as temperature since it directly  
349 affects the human respiratory system. Research is currently underway in this direction and first  
350 preliminary results was presented in (Ishmatov et al., 2022).

351

352

### 353 **Conclusion**

354 Many factors influence the pathogenesis and epidemiology of COVID-19. Considering the  
355 whole set of influencing factors at the same time can be quite difficult and it is counterproductive  
356 now and therefore it is important to identify the all factors and understand how they  
357 mechanistically influence COVID-19 and to evaluate the extent of this impact. It is a rigorous  
358 element-by-element analysis of each influencing factor that can now give good results. In the  
359 end, thanks to a mechanistic approach, in the future we will be able to assemble the whole  
360 epidemiological puzzle brick by brick.

361

362 We believe that it was a good idea to conduct research using the hypothesis of the ‘compromised  
363 airway epithelium’. The ‘compromised airway epithelium’ of infected persons can be extremely  
364 sensitive to external influences and therefore can serve as a good indicator of the impact on the

365 respiratory system of external factors. And the time lag of the impacts is rather short (1-2 days),  
366 which gives ample opportunities for analyzing and predicting the consequences of such impacts.

367  
368 Also, the idea of using the wave theory, the principle of superpositions and frequency  
369 modulation, together with the mechanistic approach, looks quite promising in the analysis of  
370 epidemic waves. But this requires a strictly mathematical approach to the analysis of all  
371 influencing factors in the future studies.

372  
373 In this study we have chosen the task of assessing the influence of air temperature on the  
374 respiratory system as a simple and obvious acting factor. It was found that even a small and/or  
375 short-term impact of drop in outdoor daily temperatures on the ‘compromised airway epithelium’  
376 lead to increased symptoms and severity of the disease (COVID-19). Changes in the ambient  
377 daily temperature are well predicted for days and weeks by modern methods. And this aspect can  
378 be used to improve systems to prevent additional risks connected with impact of drop in air  
379 temperature on worsening disease in patients and infected people who do not have or have mild  
380 or subtle symptoms of the disease – especially during an epidemic or pandemic wave. It was  
381 found that the results of the study can be used in predicting a sudden increase in the number of  
382 hospitalizations, which can be used to timely warn clinics and medical hospitals for an increase  
383 in the number of seriously ill patients. Thus the findings are another brick in the wall and besides  
384 the above, they can also be used in preparing health care systems and populations to better  
385 protect those most at risk from serious complications from becoming infected, and support  
386 timing of interventions to help achieve this.

387

388

### 389 **Acknowledgments**

390 We thank the “CityAir” and Pavel Glotov (General director of “CityAir”) for providing  
391 measured meteorological data from weather station located in Tomsk.

392

393 ***The study was supported by a grant of the Russian Science Foundation No 22-27-20111,***  
394 ***<https://rscf.ru/project/22-27-20111/> and funded by the Administration of the Tomsk Region.***

395

396

397

### 398 **References**

399

400 Baker, R. E., Yang, W., Vecchi, G. A., Metcalf, C. J. E., & Grenfell, B. T. (2020). Susceptible  
401 supply limits the role of climate in the early SARS-CoV-2 pandemic. *Science (New York, N.Y.)*,  
402 369(6501), 315–319. <https://doi.org/10.1126/science.abc2535>

403

404 Bridges, J.P., Vladar, E.K., Huang, H., et al. (2022) Respiratory epithelial cell responses to  
405 SARS-CoV-2 in COVID-19 *Thorax* 2022;77:203-209.

406

407 Bontempi E. (2020). Commercial exchanges instead of air pollution as possible origin of  
408 COVID-19 initial diffusion phase in Italy: more efforts are necessary to address interdisciplinary  
409 research. *Environ. Res.* 2020 doi: 10.1016/j.envres.2020.109775.

410

411 Bontempi E., Coccia M. 2021. International trade as critical parameter of COVID-19 spread that  
412 outclasses demographic, economic, environmental, and pollution factors. *Environ. Res.*  
413 2021;201:111514. doi: 10.1016/j.envres.2021.111514. Advance online publication.

414

415 Carballo, I. H., Bakola, M., & Stuckler, D. (2022). The impact of air pollution on COVID-19  
416 incidence, severity, and mortality: A systematic review of studies in Europe and North America.

- 417 *Environmental research*, 114155. Advance online publication.  
418 <https://doi.org/10.1016/j.envres.2022.114155>  
419
- 420 Christophi, C.A., Sotos-Prieto, M., Lan, FY. et al. Ambient temperature and subsequent COVID-  
421 19 mortality in the OECD countries and individual United States. *Sci Rep* 11, 8710 (2021).  
422 <https://doi.org/10.1038/s41598-021-87803-w>  
423
- 424 Culqui, D.R., Díaz, J., Blanco, A. et al. Short-term influence of environmental factors and social  
425 variables COVID-19 disease in Spain during first wave (Feb–May 2020). *Environ Sci Pollut Res*  
426 29, 50392–50406 (2022). <https://doi.org/10.1007/s11356-022-19232-9>  
427
- 428 D'Amico, F., Marmiere, M., Righetti, B., Scquizzato, T., Zangrillo, A., Puglisi, R., & Landoni,  
429 G. (2022). COVID-19 seasonality in temperate countries. *Environmental research*, 206, 112614.  
430 <https://doi.org/10.1016/j.envres.2021.112614>  
431
- 432 Del Rio, C., & Malani, P. N. (2022). COVID-19 in 2022-The Beginning of the End or the End of  
433 the Beginning?. *JAMA*, 327(24), 2389–2390. <https://doi.org/10.1001/jama.2022.9655>.  
434
- 435 Eccles, R., 2002. An explanation for the seasonality of acute upper respiratory tract viral  
436 infections. *Acta Otolaryngol* 122, 183-91.  
437
- 438 Foxman, E.F., Storer, J.A., Fitzgerald, M.E., Wasik, B.R., Hou, L., Zhao, H., Turner, P.E., Pyle,  
439 A.M., and Iwasaki, A., 2015. Temperature-dependent innate defense against the common cold  
440 virus limits viral replication at warm temperature in mouse airway cells. *Proc. Natl. Acad. Sci.*  
441 *U.S.A* 112, 827-32.  
442
- 443 Foxman, E.F., Storer, J.A., Vanaja, K., Levchenko, A., and Iwasaki, A., 2016. Two interferon-  
444 independent double-stranded RNA-induced host defense strategies suppress the common cold  
445 virus at warm temperature. *Proc. Natl. Acad. Sci. U.S.A* 113, 8496-501.  
446
- 447 Ishmatov, A. N. (2017a). The role of cold air in the deposition of ultrafine infectious bioaerosols  
448 in the respiratory tract. *Am. J. Respir. Crit. Care. Med.* (American Thoracic Society International  
449 Conference Abstracts) 195, A3932. [http://www.atsjournals.org/doi/abs/10.1164/ajrcm-  
450 conference.2017.195.1\\_MeetingAbstracts.A3932](http://www.atsjournals.org/doi/abs/10.1164/ajrcm-conference.2017.195.1_MeetingAbstracts.A3932).  
451
- 452 Ishmatov, A. N. (2017b). On the connection between supersaturation in the upper airways and  
453 «humid-rainy» and «cold-dry» seasonal patterns of influenza. *PeerJ Preprints* 5.  
454 <https://doi.org/10.7287/peerj.preprints.2859v1>.  
455
- 456 Ishmatov AN. (2017c). Positive association of supersaturation effects in the human airways with  
457 influenza activity in subtropical climate: influenza seasons in Okinawa (2007-2012) – New  
458 method for analyzing and forecasting (first preliminary results) *PeerJ Preprints* 5:e3132v1  
459 <https://doi.org/10.7287/peerj.preprints.3132v1>.  
460
- 461 ????Ishmatov (2017) Positive Association of Supersaturation Effects in the Human Airways with  
462 Influenza Seasons in Okinawa (2007- 2012) – New Method for Analyzing and Forecasting in  
463 Subtropical Climate (First Preliminary Results) // International conference “Trends in Influenza  
464 Research”: Abstract book. Saint-Petersburg, September 18-20, 2017 // P. 50-51 //  
465
- 466 Ishmatov, A. N. (2019). Climatic conditions and supersaturation in the airways as a new factor  
467 for enhanced deposition of ambient aerosols: a pilot study. *Proc. SPIE* 11208, 25th International



- 468 Symposium on Atmospheric and Ocean Optics: Atmospheric Physics, 112087H (18 December  
469 2019); doi: 10.1117/12.2540620  
470
- 471 Ishmatov, A. (2020a). Age- and Gender-Related Changes in the Upper Airways, Which Lead to  
472 Increased Exposure of Lower Airways to Air Pollutants, Correlate with Deaths Involving  
473 COVID-19 in the United States in 2020: Short Report (September 23, 2020). Available at SSRN:  
474 <https://ssrn.com/abstract=3697921> or <http://dx.doi.org/10.2139/ssrn.3697921>  
475
- 476 Ishmatov, A. (2020b). Influence of weather and seasonal variations in temperature and humidity  
477 on supersaturation and enhanced deposition of submicron aerosols in the human respiratory tract,  
478 *Atmospheric Environment* (2020), V. 223, 117226,  
479 <https://doi.org/10.1016/j.atmosenv.2019.117226>.  
480
- 481 Ishmatov A. (2022). "SARS-CoV-2 is transmitted by particulate air pollution":  
482 Misinterpretations of statistical data, skewed citation practices, and misuse of specific  
483 terminology spreading the misconception. *Environmental research*, 204(Pt B), 112116.  
484 <https://doi.org/10.1016/j.envres.2021.112116>  
485
- 486 Ishmatov, A.N. Bart, A.A., Strebkova, E.A., Yakovlev S.V. (2022). Association between  
487 measured air pollution levels in the troposphere and surface air with COVID-19 hospitalization  
488 in Tomsk, Russia, 2022 // *Proceedings of SPIE*. 2022. V.12341. 28th International Symposium  
489 on Atmospheric and Ocean Optics: Atmospheric Physics. 123416Y (7 December 2022); doi:  
490 10.1117/12.2645510.  
491
- 492 Iwasaki, A., Foxman, E. F. & Molony, R. D. Early local immune defences in the respiratory  
493 tract. *Nat. Rev. Immunol.* **17**, 7–20 (2017).  
494
- 494 Kang, D., Ellgen, C., & Kulstad, E. (2021). Possible effects of air temperature on COVID-19  
495 disease severity and transmission rates. *Journal of medical virology*, 93(9), 5358–5366.  
496 <https://doi.org/10.1002/jmv.27042>.  
497
- 498 Kaplin A, Junker C, Kumar A, Ribeiro MA, Yu E, Wang M, et al. (2021) Evidence and  
499 magnitude of the effects of meteorological changes on SARS-CoV-2 transmission. *PLoS ONE*  
500 16(2): e0246167. <https://doi.org/10.1371/journal.pone.0246167>.  
501
- 502 Lavigne, E., Ryti, N., Gasparrini, A., Sera, F., Weichenthal, S., Chen, H., To, T., Evans, G. J.,  
503 Sun, L., Dheri, A., Lemogo, L., Kotchi, S. O., & Stieb, D. (2022). Short-term exposure to  
504 ambient air pollution and individual emergency department visits for COVID-19: a case-  
505 crossover study in Canada. *Thorax*, *thoraxjnl-2021-217602*. Advance online publication.  
506 <https://doi.org/10.1136/thoraxjnl-2021-217602>.  
507
- 508 Li, Y., Wang, X., & Nair, H. (2020). Global Seasonality of Human Seasonal Coronaviruses: A  
509 Clue for Postpandemic Circulating Season of Severe Acute Respiratory Syndrome Coronavirus  
510 2?. *The Journal of infectious diseases*, 222(7), 1090–1097. <https://doi.org/10.1093/infdis/jiaa436>.  
511
- 512 Li, Y., Wu, J., Hao, J., Dou, Q., Xiang, H., & Liu, S. (2022). Short-term impact of ambient  
513 temperature on the incidence of influenza in Wuhan, China. *Environmental science and pollution  
514 research international*, 29(12), 18116–18125. <https://doi.org/10.1007/s11356-021-16948-y>.  
515
- 516 Liang, J., & Yuan, H. Y. (2022). Assessing the impact of temperature and humidity exposures  
517 during early infection stages on case-fatality of COVID-19: A modelling study in Europe.  
518 *Environmental research*, 211, 112931. <https://doi.org/10.1016/j.envres.2022.112931>.  
519



- 520 Lipsitch, M., Viboud, C., 2009. Influenza seasonality: lifting the fog. *Proc. Natl. Acad. Sci. U. S.*  
521 *A* 106, 3645–3646. <https://doi.org/10.1073/pnas.0900933106>.  
522
- 523 Lofgren, E., Fefferman, N. H., Naumov, Y. N., Gorski, J., & Naumova, E. N. (2007). Influenza  
524 seasonality: underlying causes and modeling theories. *Journal of virology*, 81(11), 5429–5436.  
525 <https://doi.org/10.1128/JVI.01680-06>.  
526
- 527 Maclure M. The case-crossover design: a method for studying transient effects on the risk of  
528 acute events. *Am J Epidemiol* 1991;133:144–53.  
529
- 530 Makinen, T. M., Juvonen, R., Jokelainen, J., Harju, T. H., Peitso, A., Bloigu, A., Silvennoinen-  
531 Kassinen, S., Leinonen, M., and Hassi, J., 2009. Cold temperature and low humidity  
532 are associated with increased occurrence of respiratory tract infections. *Respir Med* 103, 456-62.  
533
- 534 Moriyama, M., Hugentobler, W. J., & Iwasaki, A. (2020). Seasonality of Respiratory Viral  
535 Infections. *Annual review of virology*, 7(1), 83–101. <https://doi.org/10.1146/annurev-virology-012420-022445>.  
536  
537
- 538 Mandal, C. C., Panwar, M. S., Yadav, C. P., Tripathi, V., & Bandyopadhyaya, S. (2022).  
539 Combinatorial influence of environmental temperature, obesity and cholesterol on SARS-CoV-2  
540 infectivity. *Scientific reports*, 12(1), 4796. <https://doi.org/10.1038/s41598-022-08485-6>.  
541
- 542 McClymont, H., & Hu, W. (2021). Weather Variability and COVID-19 Transmission: A Review  
543 of Recent Research. *International journal of environmental research and public health*, 18(2),  
544 396. <https://doi.org/10.3390/ijerph18020396>.  
545
- 546 Mejdoubi, M., Kyndt, X., & Djennaoui, M. (2020). ICU admissions and in-hospital deaths linked  
547 to COVID-19 in the Paris region are correlated with previously observed ambient temperature.  
548 *PloS one*, 15(11), e0242268. <https://doi.org/10.1371/journal.pone.0242268>.  
549
- 550 Mourtzoukou, E. G., and Falagas, M. E., 2007. Exposure to cold and respiratory tract infections  
551 [Review Article]. *Int J Tuberc Lung Dis* 11, 938-943.  
552
- 553 Nichols, G.L., Gillingham, E.L., Macintyre, H.L. et al. Coronavirus seasonality, respiratory  
554 infections and weather. *BMC Infect Dis* 21, 1101 (2021). <https://doi.org/10.1186/s12879-021-06785-2>.  
555  
556
- 557 Perone, G. Assessing the impact of long-term exposure to nine outdoor air pollutants on COVID-  
558 19 spatial spread and related mortality in 107 Italian provinces. *Sci Rep* 12, 13317 (2022).  
559 <https://doi.org/10.1038/s41598-022-17215-x>.  
560
- 561 Prévost, J., Richard, J., Gasser, R., Ding, S., Fage, C., Anand, S. P., Adam, D., Gupta Vergara,  
562 N., Tauzin, A., Benlarbi, M., Gong, S. Y., Goyette, G., Privé, A., Moreira, S., Charest, H.,  
563 Roger, M., Mothes, W., Pazgier, M., Brochiero, E., Boivin, G., ... Finzi, A. (2021). Impact of  
564 temperature on the affinity of SARS-CoV-2 Spike glycoprotein for host ACE2. *The Journal of*  
565 *biological chemistry*, 297(4), 101151. <https://doi.org/10.1016/j.jbc.2021.101151>.  
566
- 567 Qi, L., Liu, T., Gao, Y., Li, Q., Tang, W., Tian, D., Su, K., Xiong, Y., Yang, J., Feng, L., & Liu,  
568 Q. (2022). Effect of absolute humidity on influenza activity across different climate regions in  
569 China. *Environmental science and pollution research international*, 29(32), 49373–49384.  
570 <https://doi.org/10.1007/s11356-022-19279-8>.  
571

- 572 Runkle, J. D., Sugg, M. M., Leeper, R. D., Rao, Y., Matthews, J. L., & Rennie, J. J. (2020).  
573 Short-term effects of specific humidity and temperature on COVID-19 morbidity in select US  
574 cities. *The Science of the total environment*, 740, 140093.  
575 <https://doi.org/10.1016/j.scitotenv.2020.140093>.  
576
- 577 Salah, B., Dinh Xuan, A. T., Fouilladieu, J. L., Lockhart, A., Regnard, J., 1988. Nasal  
578 mucociliary transport in healthy subjects is slower when breathing dry air. *Eur. Respir. J* 1, 852-  
579 5.  
580
- 581 Scafetta N. (2020). Distribution of the SARS-CoV-2 Pandemic and Its Monthly Forecast Based  
582 on Seasonal Climate Patterns. *International journal of environmental research and public health*,  
583 17(10), 3493. <https://doi.org/10.3390/ijerph17103493>.  
584
- 585 Scheerens, C., Nurhussien, L., Aglan, A., Synn, A. J., Coull, B. A., Koutrakis, P., & Rice, M. B.  
586 (2022). The impact of personal and outdoor temperature exposure during cold and warm seasons  
587 on lung function and respiratory symptoms in COPD. *ERJ open research*, 8(1), 00574-2021.  
588 <https://doi.org/10.1183/23120541.00574-2021>.  
589
- 590 Tamerius, J. D., Shaman, J., Alonso, W. J., Alonso, W. J., Bloom-Feshbach, K., Uejio, C. K.,  
591 Comrie, A., and Viboud, C., 2013. Environmental predictors of seasonal influenza epidemics  
592 across temperate and tropical climates. *PLoS Pathog* 9, e1003194.  
593
- 594 Taylor, B. M., Ash, M., & King, L. P. (2022). Initially High Correlation between Air Pollution  
595 and COVID-19 Mortality Declined to Zero as the Pandemic Progressed: There Is No Evidence  
596 for a Causal Link between Air Pollution and COVID-19 Vulnerability. *International journal of*  
597 *environmental research and public health*, 19(16), 10000.  
598 <https://doi.org/10.3390/ijerph191610000>.  
599
- 600 To, T., Zhang, K., Maguire, B., Terebessy, E., Fong, I., Parikh, S., & Zhu, J. (2021). Correlation  
601 of ambient temperature and COVID-19 incidence in Canada. *The Science of the total*  
602 *environment*, 750, 141484. <https://doi.org/10.1016/j.scitotenv.2020.141484>  
603
- 604 Tripathi, V., Bundel, R., & Mandal, C. C. (2022). Effect of environmental factors on SARS-  
605 CoV-2 infectivity in northern hemisphere countries: a 2-year data analysis. *Public health*, 208,  
606 105–110. <https://doi.org/10.1016/j.puhe.2022.04.011>.  
607
- 608 Tyrrell, D. A., and Parsons, R., 1960. Some virus isolations from common colds. III. Cytopathic  
609 effects in tissue cultures. *Lancet* 1, 239-42.  
610
- 611 Xie, J., & Zhu, Y. (2020). Association between ambient temperature and COVID-19 infection in  
612 122 cities from China. *The Science of the total environment*, 724, 138201.  
613 <https://doi.org/10.1016/j.scitotenv.2020.138201>  
614
- 615 Xu, C., Zheng, X., & Shen, S. (2021). A numerical study of the effects of ambient temperature  
616 and humidity on the particle growth and deposition in the human airway. *Environmental*  
617 *research*, 200, 111751. <https://doi.org/10.1016/j.envres.2021.111751>