

1 **Usability and performance of the MicroGEM Sal6830™, an RT-**
2 **PCR saliva-based point-of-care platform to detect SARS-CoV-2 in**
3 **primary healthcare settings with non-laboratory trained**
4 **operators.**

5

6 Vanessa Mills¹, Teresa Owens Tyson², Rachel Helton², Paula Hill-Collins², Sarah
7 Hubbard², Anchi Scott³, Jeff A. Hickey³, Brian E. Root³, Rory O'Brien³, Jillian
8 Conte³, Jo-Ann L. Stanton^{3*}, Jeff D. Chapman³.

9

10 ¹Care 4 U Community Health Centre, Miami, Florida, USA.

11 ² St. Mary's Health Wagon, Wise, Virginia, USA.

12 ³ MicroGEM, Charlottesville, Virginia, United States of America.

13

14 *Corresponding author

15 E-mail: joannstanton5@gmail.com

16 **Author Contributions**

17 VM, TOT, RH, PH-C, SH: Study design, staff and participant recruitment, clinical site management

18 JLS, RO, JC: Manuscript preparation, data analysis, editing

19 AS, JAH, BER: Study design, sample preparation, data analysis, editing

20 **NOTE: This preprint reports new research that has not been certified by peer review and should not be used to guide clinical practice.**
JDC: Project oversight, funding, study design.

21 **Abstract**

22 The beginning of the COVID-19 pandemic demonstrated how few
23 point-of-care diagnostic tools were available that could be safely and
24 easily operated by healthcare workers with no laboratory training. The
25 gold-standard test, and initially the only test, used RT-PCR with nasal
26 pharyngeal swabs (NPS). Two issues quickly emerged: 1) RT-PCR required
27 central laboratory processing leading to significant time delays and 2) NPS
28 collection causes discomfort, is inappropriate for ongoing repeat
29 sampling of individuals (e.g., frontline healthcare workers) and poses
30 difficulty when obtaining samples from some sections of the population
31 (e.g. some elderly and young children). The Sal6830™ platform is a fully
32 self-contained, RT-PCR point-of-care device for detecting SARS-CoV-2
33 from saliva that takes less than thirty minutes to complete. In this study
34 we tested the usability of the Sal6830™ platform by healthcare workers
35 unfamiliar with the instrument at two community clinics: Care 4 U
36 Community Health Center (Miami, Florida, USA) and St. Mary's Health
37 Wagon (Wise, Virginia, USA). Staff participated in three tests: 1)
38 determining SARS-CoV-2 status from blinded positive and negative saliva
39 samples, 2) a clinical study comparing SARS-CoV-2 detection with a

40 comparator point-of-care technology from the same patient and 3)
41 completing a survey designed to measure comfort and confidence using
42 the Sal6830™ point-of-care device having received no training.
43 Participants overwhelmingly found the Sal6830™ platform easy and
44 intuitive to use, successfully called SARS-CoV-2 status of contrived,
45 blinded samples and measured a 93.3% overall percent agreement when
46 comparing patient samples across two point-of-care technologies.

47

48 **Introduction**

49 COVID-19 spread rapidly from first detection of SARS-CoV-2 in late
50 2019 to the declaration of a pandemic by March 2020. The gold standard
51 to diagnose and track the virus is reverse transcriptase polymerase chain
52 reaction (RT-PCR), a highly accurate test but, at the time, anchored to
53 central laboratory facilities in the hands of highly trained specialists [1].
54 Turn-around times on test results could be as long as five days leading to
55 patient loss-to-follow-up, increased opportunity for viral spread, and the
56 unnecessary quarantine of uninfected people. In addition, the available
57 tests required nasopharyngeal swab (NPS) samples that increase medical
58 professionals' exposure to potentially contagious patients, caused patient

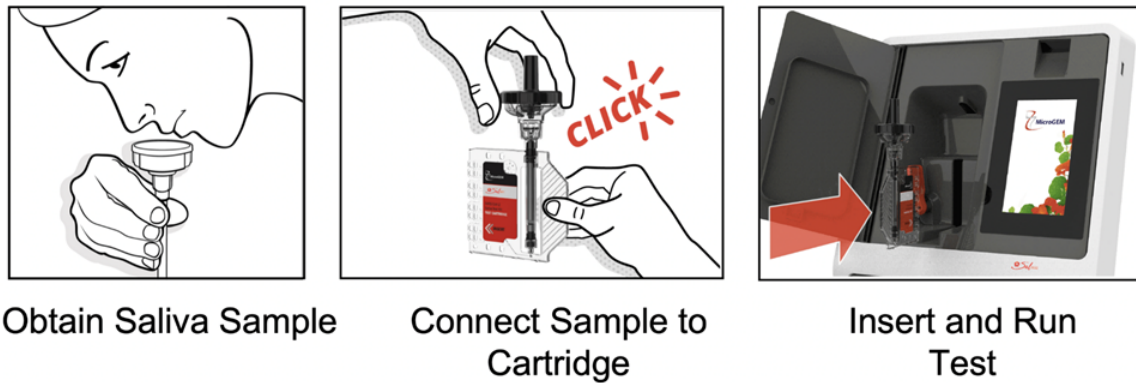
59 discomfort, and contributed to inadequate sampling leading to
60 inconsistent results [2–4]. For certain patient groups, such as pediatric
61 patients and patients with mental disabilities, collection of NPS samples
62 can be difficult or unattainable [3].

63 One solution that offered to overcome some of these challenges
64 was to test patients at the point-of-care (POC) in real time in order to
65 reduce wait time for results. However, early in the pandemic,
66 technologies for RT-PCR that could be operated by non-laboratory trained
67 healthcare workers at the POC were limited. There were some RT-PCR
68 POC platforms available early in the pandemic, such as the Xpert Xpress
69 SARS-CoV-2 test (Cepheid) and the cobas[®] SARS-CoV-2 & Influenza A/B
70 Nucleic Acid Test for use on the cobas[®] Liat System (Roche Molecular
71 Systems, Inc.) [5]. These technologies utilized eluate from a healthcare
72 provider-collected or instructed NPS placed in a variety of viral transport
73 media. In these systems a subsample of the eluate is transferred to an
74 assay-specific detection platform where the sample is processed and
75 undergoes RT-PCR; this additional sample handling introduces the
76 opportunity for cross-contamination between different samples or
77 patient ID mix up. Also, the operator may be exposed to a potentially

78 hazardous infectious material during sample transfer. The off-platform
79 sample handling can also present difficulty for non-laboratory trained
80 individuals to operate safely with confidence.

81 It was determined early in the pandemic that SARS-CoV-2 can be
82 detected in a variety of biological sample types [6]. Saliva can be collected
83 via swabbing or from stimulated or unstimulated manipulation of the
84 salivary gland and provides non-invasive, lower cost biospecimen
85 collection [7]. SARS-CoV-2 can be detected reliably from saliva [7]. Connor
86 *et al.* found in their comparative study that substituting a saliva sample
87 for NPS in a laboratory based SARS-CoV-2 RT-PCR assay without adjusting
88 for sample-type, was acceptable for diagnostic testing, particularly when
89 required for repeat-testing or working with challenging patients [3].
90 Tarantini *et al.* also noted that in addition to patient discomfort when
91 NPS are collected, incorrect application of the swab can mean the
92 nasopharynx target site is not reached [8] with a significant negative
93 impact upon test reproducibility, reliability, and standardisation. The skill
94 of the sample collector does not similarly impact self-collection of a saliva
95 sample.

96 Even after multiple waves of SARS-CoV-2 outbreaks around the
97 world and many more POC *in vitro* diagnostic devices issued with
98 emergency use authorization by the U.S. Food and Drug Administration, a
99 call for a saliva-based, RT-PCR, POC device has not received a good
100 response [9]. The MicroGEM Sal6830™ SARS-CoV-2 Saliva Test is the first
101 such test with emergency use authorization to respond to this call and in
102 doing so to overcome many of the challenges described here. The
103 Sal6830™ uses saliva that the patient self-deposits directly into the all-in-
104 one processing cartridge which they cap/seal themselves, protecting the
105 operator from handling a potential biohazard and, as the test is run
106 immediately, significantly reducing the possibility of patient sample mix
107 up. Figure 1 illustrates the processing of COVID-19 saliva samples using
108 the Sal6830™ system. The Sal6830™ cartridge chemistry has been
109 optimised for saliva and a bead-based viral capture system traps and
110 concentrates intact virions rather than viral debris or un-encapsulated
111 viral RNA, potentially differentiating between infectious and non-
112 infectious patients.



113

114 **Fig 1: Sample collection and test run using Sal6830™.** The patient

115 deposits approximately 1 ml of saliva directly into the Sal6830™ collection

116 cup and twist-seals the cap in place to permanently contain the sample

117 within the extraction tube assembly. The act of twisting the cap releases

118 viral capture reagent into the sample which is then gently swirled to mix

119 before being placed into the test cartridge and slotted into the Sal6830™

120 instrument. The run is initiated via a touch screen and a result (Detected,

121 Not Detected or Invalid) is displayed on the screen after approximately

122 thirty minutes. The spent cartridge is removed from the device and

123 deposited directly into biohazard waste.

124

125 The ability to rapidly triage patients as they present to the clinic (i.e.

126 the POC) enables healthcare workers to immediately provide proper care

127 and to direct resources appropriately. Prompt triage means that

128 treatments can be administered earlier, infected and non-infected
129 patients can be rapidly identified, and isolated as needed, and valuable
130 personal protective equipment can be prioritised for use with those
131 patients known to have COVID-19 infection. However, a POC approach
132 can only be successfully implemented to maintain patient flow if
133 healthcare workers are confident to use it and can demonstrate that the
134 results they generate from the platform are accurate. In this study, we
135 investigated whether healthcare workers without previous laboratory
136 training were able to use the Sal6830™ system with confidence and
137 accuracy to detect patients with COVID-19 at the POC.

138

139 **Materials and Methods**

140 **Health clinics and ethical approval.**

141 Clinical performance and usability studies were performed at two
142 centres: Care 4 U Community Health Center (Miami, Florida, USA) and St
143 Mary's Health Wagon (Wise, Virginia, USA). Ethical approval for these
144 studies was granted under clinic Institutional Review Board (IRB) Study
145 Numbers 1313475 and 1315538, respectively. The IRB Tracking Number
146 for this study was 2021278. The locations and highest academic

147 qualification of all participating healthcare workers are provided in Table
148 1. Saliva used for blind samples was collected under WCG IRB study
149 number 1294772.

150

151 **Table 1. Education and title of non-laboratory trained healthcare**
152 **workers**

OPERATOR	TITLE	DEGREES/ASSOCIATIONS	LOCATION
A	Medical Assistant	High School Diploma	St Mary's Health Wagon
B	Nurse	Licensed Practical Nurse	St Mary's Health Wagon
1	Medical Assistant	High School Diploma	Care 4 U
2	Medical Assistant	High School Diploma	Care 4 U
3	Nurse	MSc. Nurse Practitioner	Care 4 U
4	Medical Assistant	High School Diploma	Care 4 U
5	Family Nurse Practitioner	MSc Nursing	Care 4 U
6	Medical Assistant	BA	Care 4 U
7	Chief Operating Officer	RN, BSN, MPH	Care 4 U

153

154

155 **Preparation of blinded samples for clinical tests**

156 Verified negative saliva was collected from donors and pooled. A
157 SARS-CoV-2 gamma-irradiated standard supplied by the US Centre for
158 Disease Control and Prevention (BEI Resources, Manassas, VA, USA,
159 catalogue number NR52287, lot number 70039068) was obtained at a

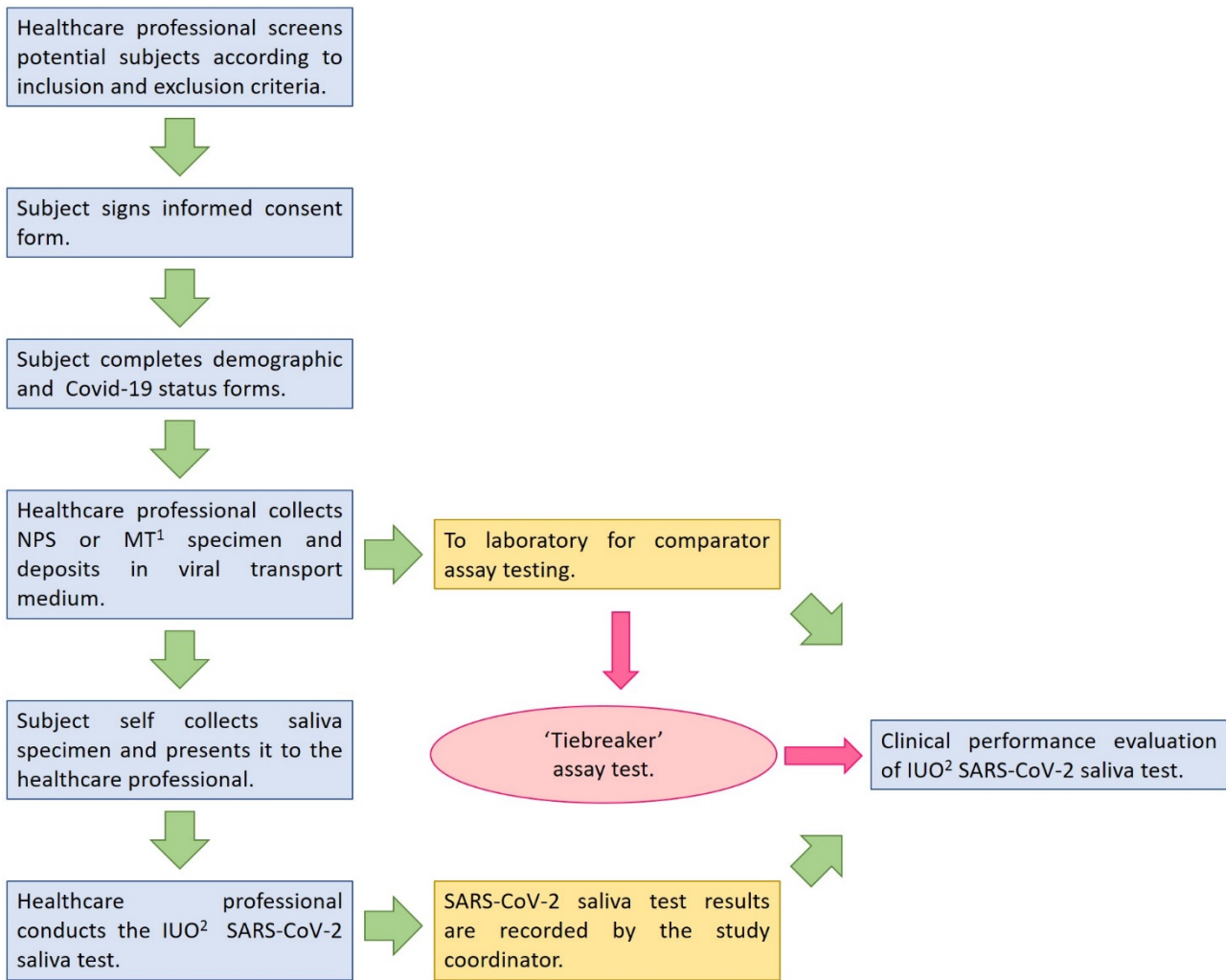
160 viral stock concentration of 7.65×10^8 genome equivalents (GE)/ml
161 according to the certificate of analysis. The verified negative pooled saliva
162 was stored at -80°C until blinded samples were prepared. Blind positive
163 samples were prepared by diluting the concentrated viral stock to a final
164 concentration of $1.9 \times$ Limit of Detection (LoD) for Sal6830™, spiked into
165 the verified negative pooled saliva. Blind positive samples were prepared
166 as 1.1 mL aliquots. Blind negative samples were prepared as 1.1 mL
167 aliquots of the verified negative pooled saliva. Blinded samples were
168 stored at -80°C until required. Each sample was labeled with a unique
169 alphanumeric code known only to MicroGEM's clinical trial director (N =
170 48). The blinded samples were shipped by overnight courier to the
171 participating clinics. Six non-laboratory trained healthcare workers with
172 no previous experience using Sal6830™ performed SARS-CoV-2 detection
173 on the blinded samples according to the Sal6830™ operating instructions.
174 Further details of sample preparation are provided in the Supporting
175 Information.

176

177 **Clinical performance evaluation of Sal6830™**

178 The performance of the Sal6830™ SARS-CoV-2 Saliva Test at POC
179 was evaluated in a prospective multisite clinical study. A flow chart of the
180 study design is illustrated in Fig 2. Study participants were consented into
181 the study at single presentation to the clinic. All participants were
182 screened against the inclusion/exclusion criteria, gave their informed
183 consent, and provided a baseline survey of subject demographics and
184 COVID-19 status. The study population included individuals aged 5 years
185 and over. Pregnant women could participate in the study. Individuals
186 were included if their healthcare provider suspected COVID-19 and they
187 were able to provide consent. Exclusion criteria included an inability to
188 tolerate or provide two samples, involvement in planning and/or
189 conducting the study, or previous participation in a Sal6830™ SARS-CoV-2
190 Saliva Test study. Further details for consenting participants are available
191 as part of the Supporting Information.

192



193

194 **Fig 2. General Study Design for Sal6830™ clinical comparison.**

195 A Tiebreaker test was performed by running a second Cepheid Xpert Xpress
196 CoV-2/Flu/RSV assay if results were discordant. ¹ MT, Mid-Turbinate; ² IUO,
197 Informational Use Only.

198

199 Each participant provided two samples. The first sample was a NPS that
200 was shipped to either Obstetrical Associates Laboratory Services, Fall River,
201 Massachusetts, USA or Intermountain Laboratory Services, Murray, Utah, USA

202 for testing on the comparator POC platform. The comparator platform chosen
203 for this study was the Cepheid Xpert Xpress CoV-2/Flu/RSV operated in
204 accordance with the manufacturer’s instructions. The second sample was a
205 patient collected saliva sample for processing on the Sal6830™ as per the
206 instructions for use (IFU). Patients self-deposited a saliva sample directly into
207 the Sal6830™ extraction tube assembly eliminating any additional sample
208 handling by the operator. The same six non-laboratory trained operators that
209 performed the blind sample evaluation performed all prospective clinical tests
210 undertaken as part of this evaluation.

211

212 **Sal6830™ usability questionnaire for point-of-care sites.**

213 The confidence and comfort of non-laboratory staff using the Sal6830™
214 was assessed through a usability questionnaire (Likert Scale). The
215 questionnaire was completed by the six non-laboratory healthcare workers
216 who took part in the other experiments and an additional three non-
217 laboratory staff who also ran the Sal6830™ platform at Care 4 U Community
218 Health Center on patients not recruited into the formal study. A copy of the
219 detailed data are provided in the Supporting Information.

220

221 **Results and Discussion**

222 Results obtained from blinded samples processed on the Sal6830™
 223 platform operated by non-laboratory trained healthcare workers are detailed
 224 in Table 2. All results of the negative saliva samples and positive samples were
 225 concordant with the expected results. One positive sample returned an invalid
 226 result, which is not a discordant result. Per the IFU in a real world setting, this
 227 patient would have been requested to resubmit a sample for testing rather
 228 than being cleared of COVID-19 infection. These results suggest that the
 229 Sal6830™ can be run safely and correctly by healthcare workers without
 230 training in laboratory practice and that the operation of the Sal6830™ platform
 231 is straightforward and intuitive.

232

233 **Table 2. Operator performance of Sal6830™ with blinded samples at 1.9 ×**
 234 **LoD at two clinical sites.**

SITE & OPERATOR	BLINDED PANEL TESTING RESULTS					
	Positive Samples			Negative samples		
	Number Tested	Pos.	Neg.	Number Tested	Pos.	Neg.
CARE 4 U TOTALS	12	12	0	12	0	12
1	3	3	0	3	0	3
2	3	3	0	3	0	3
3	3	3	0	3	0	3
4	3	3	0	3	0	3
ST MARY'S HEALTH WAGON TOTALS	12	11	0	12	0	12
A	6	5	0	6	0	6

B	6	6	0	6	0	6
STUDY TOTAL	24	23	0	24	0	24

235

236

237 Sal6830™ clinical performance in the hands of non-laboratory trained
238 healthcare workers was tested in a comparator, prospective trial. The same six
239 healthcare workers who had processed the blinded samples carried out this
240 work. Patients suspected of having COVID-19 were recruited on presentation
241 at the clinic. They provided two samples, one tested using the Sal6830™ and
242 the second using a different, RT-PCR based POC platform (Cepheid Xpert
243 Xpress CoV-2/Flu/RSV test). Critical differences between the two tests are the
244 sample type (Sal6830™ uses saliva whereas the Cepheid Xpert Xpress CoV-
245 2/Flu/RSV requires a NPS sample) and the degree of sample handing by the
246 operator when running the test. Patients collected their own saliva sample
247 directly into the Sal6830™ extraction tube assembly ('test cartridge') while the
248 NPS required further steps to transfer swab eluate in viral transport medium
249 to the Cepheid detection cartridge. Table 3 details the clinical performance
250 data for both tests. The positive percent agreement (PPA), negative percent
251 agreement (NPA), and overall percent agreement for the clinical study were
252 87.2% (Confidence Interval (CI) = 74.8% - 94.0%), 97.2% (CI = 90.4% - 99.2%)
253 and 93.3% (CI = 88.6% - 98.1%), respectively. These high levels of agreement

254 between results obtained by non-laboratory trained healthcare workers and
255 those from central laboratory facilities confirm that Sal6830™ performed
256 according to expectations in a POC setting when operated by untrained, lay
257 operators.

258 The predictive agreement between the Cepheid and Sal6830™ POC
259 platforms were similar but not identical. We attribute this to underlying
260 differences in how the two platforms capture SARS-CoV-2 viral material. By
261 processing whole NPS eluate the Cepheid detects both viral particles and
262 associated but non-infectious viral debris [10]. The Sal6830™ viral capture
263 chemistry only detects intact viral particles that are more likely to be
264 infectious. Detection differences between the two sample types were recently
265 reviewed in McPhillip and MacSharry (2022) [11] with saliva from the same
266 patient shown to be positive when NPS is negative, and vice versa.

267 **Table 3. Clinical performance of Sal6830™ SARS-CoV-2 saliva test**

Combined Sites*		Cepheid Xpert Xpress CoV-2/Flu/RSV		
		Positive	Negative	Total
Sal6830™	Positive	41	2	43
	Negative	6	70	76
	Total	47	72	119

268
269 *PPA = $TP/(TP+FP)$; NPA = $TN/(TF+FP)$; TP = True Positive; TN = True Negative; FP = False Positive;
270 FN = False Negative.

271

272 A summary of healthcare workers responses to the usability
273 questionnaire is provided in Table 4. All healthcare workers participating in
274 this trial found the Sal6830™ easy to use and they did not require additional
275 technical support. The system and test functions were well integrated, with
276 test results easy to interpret. Overall, it was found that healthcare
277 professionals would learn to use the Sal6830™ quickly and in the clinics
278 participating in this trial, all users were confident they could conduct the test.
279 What is more, they planned to use Sal6830™ frequently in POC settings. This
280 confirms healthcare workers were comfortable and confident using Sal6830™
281 to process patient samples in a POC setting without technical backup.

282 **Table 4. Average response to System Usability Questionnaire for Sal6830™.**
283 Values were recorded as 1=strongly disagree. 5=strongly agree (N = 9).

Question	Average response ± SD*
The MicroGEM Sal6830™ SARS-CoV-2 Saliva test works well in Point-of-Care settings.	4.7 ± 0.47
I found the MicroGEM Sal6830™ SARS-CoV-2 Saliva test was unnecessarily complex.	1.2 ± 0.42
I found the MicroGEM Sal6830™ SARS-CoV-2 Saliva test was easy to use.	4.6 ± 0.68
I will need the support of a technical person to be able to use the MicroGEM Sal6830™ SARS-CoV-2 Saliva test.	1.1 ± 0.31
I found the various functions in the MicroGEM Sal6830™ SARS-CoV-2 Saliva test well integrated.	4.7 ± 0.47
I would imagine that most healthcare professionals would learn to use the MicroGEM Sal6830™ SARS-CoV-2 Saliva test quickly.	4.7 ± 0.47
I found the MicroGEM Sal6830™ SARS-CoV-2 Saliva test difficult to use.	1.1 ± 0.31
I felt confident using the MicroGEM Sal6830™ SARS-CoV-2 Saliva test.	4.9 ± 0.31
I needed to learn a lot of things before I could get going with the MicroGEM Sal6830™ SARS-CoV-2 Saliva test.	1.8 ± 1.31
I found the MicroGEM Sal6830™ SARS-CoV-2 Saliva test results easy to interpret.	5 ± 0
Would you recommend this device to another (non-laboratory) healthcare professional.	8 participants answered 'Definitely yes'. 1 said 'Probably yes'

284

285 *Standard deviation shows population variance.

286

287 Conclusion

288 In this report we demonstrate that the Sal6830™ SARS-CoV-2 saliva test
289 can be used accurately and easily by non-laboratory trained healthcare
290 workers requiring no technical support or user training. Study participants felt

291 confident to use the Sal6830™ with patient samples and were able to correctly
292 deliver test results. The Sal6830™ platform returned results equivalent to the
293 Cepheid GeneXpert (93.3% overall percent agreement) but was easier to use
294 with no requirement for additional sample handling or for a nurse-collected
295 NPS. Rather, the Sal6830™ used a simple saliva sample that was easily and
296 painlessly self-supplied by the patient. Sal6830™ uses the gold-standard RT-
297 PCR viral detection technology but is fully compatible with POC settings with
298 non-laboratory trained healthcare workers able to operate the system with
299 confidence.

300

301 **Acknowledgements**

302 We thank the healthcare workers and participants who took part in this
303 study for their generosity in providing their samples and feedback.

304

305 **References**

- 306 1. Wu SY, Yau HS, Yu MY, Tsang HF, Chan LWC, Cho WCS, et al. The diagnostic
307 methods in the COVID-19 pandemic, today and in the future. Expert Rev
308 Mol Diagn. 2020;20: 985–993. doi:10.1080/14737159.2020.1816171

- 309 2. Genelhoud G, Adamoski D, Spalanzani RN, Bochnia-Bueno L, de Oliveira JC,
310 Gradia DF, et al. Comparison of SARS-CoV-2 molecular detection in
311 nasopharyngeal swab, saliva, and gargle samples. *Diagn Microbiol Infect*
312 *Dis.* 2022;103: 115678. doi:10.1016/j.diagmicrobio.2022.115678
- 313 3. Connor MC, Copeland M, Curran T. Investigation of saliva, tongue swabs
314 and buccal swabs as alternative specimen types to nasopharyngeal swabs
315 for SARS-CoV-2 testing. *J Clin Vir.* 2022;146: 105053.
316 doi:10.1016/j.jcv.2021.105053
- 317 4. Kinloch NN, Ritchie G, Brumme CJ, Dong W, Dong W, Lawson T, et al.
318 Suboptimal Biological Sampling as a Probable Cause of False-Negative
319 COVID-19 Diagnostic Test Results. *J Infect Dis.* 2020;222: 899–902.
320 doi:10.1093/infdis/jiaa370
- 321 5. Health C for D and R. In Vitro Diagnostics EUAs - Molecular Diagnostic Tests
322 for SARS-CoV-2. FDA. 2022 [cited 13 Oct 2022]. Available from:
323 [https://www.fda.gov/medical-devices/coronavirus-disease-2019-covid-19-](https://www.fda.gov/medical-devices/coronavirus-disease-2019-covid-19-emergency-use-authorizations-medical-devices/in-vitro-diagnostics-euas-molecular-diagnostic-tests-sars-cov-2)
324 [emergency-use-authorizations-medical-devices/in-vitro-diagnostics-euas-](https://www.fda.gov/medical-devices/coronavirus-disease-2019-covid-19-emergency-use-authorizations-medical-devices/in-vitro-diagnostics-euas-molecular-diagnostic-tests-sars-cov-2)
325 [molecular-diagnostic-tests-sars-cov-2](https://www.fda.gov/medical-devices/coronavirus-disease-2019-covid-19-emergency-use-authorizations-medical-devices/in-vitro-diagnostics-euas-molecular-diagnostic-tests-sars-cov-2)

- 326 6. Martinez RM. Clinical Samples for SARS-CoV-2 Detection: Review of the
327 Early Literature. Clin Microbiol Newsl. 2020;42: 121–127.
328 doi:10.1016/j.clinmicnews.2020.07.001
- 329 7. Medeiros da Silva RC, Nogueira Marinho LC, de Araújo Silva DN, Costa de
330 Lima K, Pirihi FQ, Luz de Aquino Martins AR. Saliva as a possible tool for the
331 SARS-CoV-2 detection: A review. Travel Med Infect Dis. 2020;38: 101920.
332 doi:10.1016/j.tmaid.2020.101920
- 333 8. Tarantini FS, Wu S, Jenkins H, Tellechea Lopez A, Tomlin H, Hyde R, et al.
334 Direct RT-qPCR Assay for the Detection of SARS-CoV-2 in Saliva Samples.
335 Methods Protoc. 2022;5: 25. doi:10.3390/mps5020025
- 336 9. Wang Y, Upadhyay A, Pillai S, Khayambashi P, Tran SD. Saliva as a diagnostic
337 specimen for SARS-CoV-2 detection: A scoping review. Oral Dis. 2022 28
338 Suppl 2:2362-2390. doi:10.1111/odi.14216
- 339 10. Owusu D, Pomeroy MA, Lewis NM, Wadhwa A, Yousaf AR, Whitaker B,
340 Dietrich E, Hall AJ, Chu V, Thornburg N, Christensen K, Kiphibane T,
341 Willardson S, Westergaard R, Dasu T, Pray IW, Bhattacharyya S, Dunn A,
342 Tate JE, Kirking HL, Matanock A; Household Transmission Study Team.
343 Persistent SARS-CoV-2 RNA Shedding Without Evidence of Infectiousness: A
344 Cohort Study of Individuals With COVID-19. J Infect Dis. 2021 Oct

345 28;224(8):1362-1371. doi: 10.1093/infdis/jiab107. PMID: 33649773;

346 PMCID: PMC7989388.

347 11.McPhillips L, MacSharry J. Saliva as an alternative specimen to

348 nasopharyngeal swabs for COVID-19 diagnosis: Review. Access Microbiol.

349 2022 May 20;4(5):acmi000366. doi: 10.1099/acmi.0.000366. PMID:

350 36003360; PMCID: PMC9394527.