

Automated assessment of chest CT severity scores in patients suspected of COVID-19 infection

Pranav Ajmera¹, Snehal Rathi², Udayan Dosi¹, Suvarna Lakshmi Kalli¹, Avinav Luthra¹, Sanjay Khaladkar¹, Richa Pant^{3*}, Jitesh Seth³, Pranshu Mishra³, Manish Gawali³, Yash Pargaonkar³, Viraj Kulkarni³, Amit Kharat³

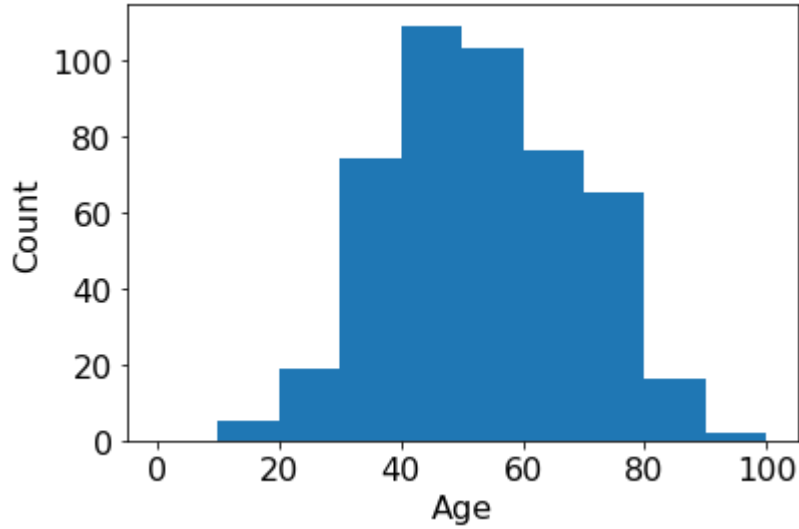
¹: Dr. DY Patil Medical College, Hospital and Research Center, DY Patil Vidyapeeth, Pune, India

²: MGM Institute of Health Sciences, Navi Mumbai, India

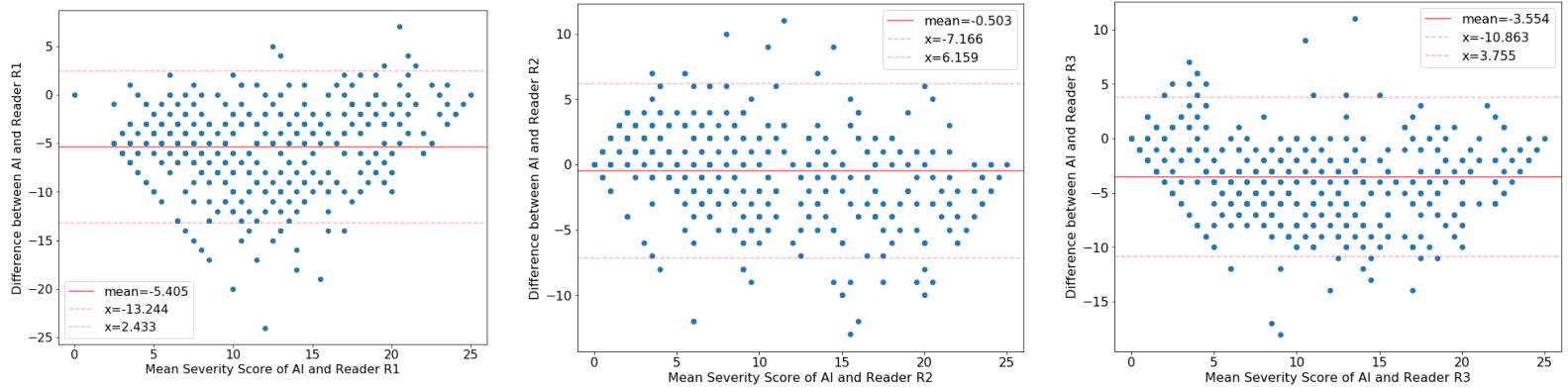
³: DeepTek Medical Imaging Pvt. Ltd., Pune, India

***Corresponding author:** richa.pant@deeptek.ai

Supplementary Figures:



Supplementary Figure 1: Age distribution of COVID-19-affected patients.



Supplementary Figure 2: B–A plot illustrating the agreement test for CTSS calculation between the individual readers and the AI model. The plots elucidate the difference in the CTSS reported by the individual reader and calculated by the AI model (y-axis) over the mean CTSS reported by the individual reader and calculated by the AI model (x-axis). The value of the mean difference (red solid line) and the upper and lower limits of 95% agreement (red dotted lines) are shown.