

1 **Tryptophan metabolism, gut microbiota, and carotid artery**
2 **plaque in women with and without HIV infection**

3 Kai Luo¹, Zheng Wang¹, Brandilyn A Peters¹, David B Hanna¹, Tao Wang¹, Christopher C
4 Sollecito², Evan Grassi², Fanua Wiek², Lauren St Peter², Mykhaylo Usyk², Wendy S Post³,
5 Alan L Landay⁴, Howard N Hodis⁵, Kathleen M Weber⁶, Audrey French⁴, Elizabeth T Golub⁷,
6 Jason Lazar⁸, Deborah Gustafson⁹, Anjali Sharma¹⁰, Kathryn Anastos^{1,10,11}, Clary B Clish¹²,
7 Rob Knight^{13,14,15,16}, Robert C Kaplan^{1,17}, Robert D Burk^{1,2,11,18}, and Qibin Qi^{1,19} *

8
9 ¹ Department of Epidemiology and Population Health, Albert Einstein College of Medicine,
10 Bronx, New York, USA

11 ² Department of Microbiology & Immunology, Albert Einstein College of Medicine, Bronx,
12 New York, USA

13 ³ Department of Medicine, Johns Hopkins University, Baltimore, MD, USA

14 ⁴ Department of Internal Medicine, Rush University Medical Center, Chicago, IL, USA

15 ⁵ Atherosclerosis Research Unit, Keck School of Medicine, University of Southern California,
16 Los Angeles, CA, USA

17 ⁶ Hektoen Institute of Medicine, Chicago, IL, USA

18 ⁷ Department of Epidemiology, Johns Hopkins Bloomberg School of Public Health,
19 Baltimore, MD, USA

20 ⁸ Department of Medicine, State University of New York Downstate Medical Center,
21 Brooklyn, New York, USA

22 ⁹ Department of Neurology, State University of New York-Downstate Medical Center,
23 Brooklyn, New York, USA

24 ¹⁰ Department of Medicine, Albert Einstein College of Medicine, Bronx, New York, USA

25 ¹¹ Department of Obstetrics & Gynecology and Women's Health, Albert Einstein College of
26 Medicine, Bronx, New York, USA

27 ¹² Broad Institute of MIT and Harvard, Cambridge, MA, USA

28 ¹³ Department of Bioengineering, University of California, San Diego, La Jolla, CA, USA

29 ¹⁴ Department of Pediatrics, University of California, San Diego, La Jolla, CA, USA

30 ¹⁵ Center for Microbiome Innovation, University of California, San Diego, La Jolla, CA,
31 USA

32 ¹⁶ Department of Computer Science and Engineering, University of California, San Diego, La
33 Jolla, CA, USA

34 ¹⁷ Public Health Sciences Division, Fred Hutchinson Cancer Research Center, Seattle, WA,
35 USA

36 ¹⁸ Department of Pediatrics, Albert Einstein College of Medicine, Bronx, New York, USA

37 ¹⁹ Department of Nutrition, Harvard T.H. Chan School of Public Health, Boston, MA, USA
38

39 **Correspondence author:** Dr. Qibin Qi (qibin.qi@einsteinmed.edu) at Department of
40 Epidemiology and Population Health, Albert Einstein College of Medicine, 1300 Morris Park
41 Avenue, Belfer Building, Room 1306, Bronx, New York, 10461 USA.

42 **Abstract**

43 **Background:** The perturbation of tryptophan (TRP)-kynurenine (KYN) metabolism has been
44 linked with HIV infection and cardiovascular disease (CVD), but the interrelationship among
45 TRP metabolites, gut microbiota, and atherosclerosis has not yet been fully understood in the
46 context of HIV infection.

47 **Methods:** We included 361 women (241 HIV+, 120 HIV-) with carotid artery plaque
48 assessments from the Women's Interagency HIV Study, measured ten plasma TRP
49 metabolites and profiled fecal gut microbiome. TRP metabolites related gut microbial
50 features were selected through the Analysis of Compositions of Microbiomes with Bias
51 Correction method. The associations of TRP metabolites and related microbial features with
52 plaque were examined using multivariable logistic regression.

53 **Results:** While plasma kynurenic acid (KYNA) (odds ratio [OR]=1.93[1.12, 3.32] per one
54 SD increase, $P=0.02$) and KYNA/TRP (OR=1.83[1.08, 3.09], $P=0.02$) were positively
55 associated with plaque, indole-3-propionate (IPA) (OR=0.62 [0.40, 0.98], $P=0.03$) and
56 IPA/KYNA (OR=0.51[0.33, 0.80], $P<0.01$) were inversely associated with plaque. Five gut
57 bacterial genera and many affiliated species were positively associated with IPA (FDR-
58 $q<0.25$), including *Roseburia sp.*, *Eubacterium sp.*, *Lachnospira sp.*, and *Coprobacter sp.*;
59 but no bacterial genera were found to be associated with KYNA. Furthermore, an IPA-
60 associated-bacteria score was inversely associated with plaque (OR=0.47[0.28, 0.79],
61 $P<0.01$). But no significant effect modification by HIV serostatus was observed in these
62 associations.

63 **Conclusions:** In a cohort of women living with and without HIV infection, plasma IPA levels
64 and related gut bacteria were inversely associated with carotid artery plaque, suggesting a
65 potential beneficial role of IPA and its gut bacterial producers in atherosclerosis and CVD.

66 **Keywords:** Tryptophan metabolism, indole-3-propionate, gut microbiome, human
67 immunodeficiency virus (HIV) infection, atherosclerosis

68

69 **Abbreviations**

70 HIV: human immunodeficiency virus; WIHS: Women's Interagency HIV Study; MACS:
71 Multicenter AIDS Cohort Study; MACS-WIHS Combined Cohort Study (MWCCS); CVD:
72 cardiovascular disease; FDR: false discovery rate; TRP: tryptophan; KYN: kynurenine;
73 KYNA: kynurenic acid; ILA: indole-3-lactic acid; IAA: indole-3-acid-acetic; IPA: indole-3-
74 propionic acid; HILIC: Hydrophilic Interaction Liquid Chromatography; MS: Mass
75 Spectrometry; SHOGUN: shallow-shotgun; IQR: inter-quartile range; SD: standard deviation;
76 ANCOMBC: Analysis of Compositions of Microbiomes with Bias Correction; KEGG
77 Ortholog groups (KOs); CLR: central log ratio; Cs-FLDA: 3-(aryl) acryloyl-CoA:(R)-3-(aryl)
78 lactate CoA-transferase; ACDS: butyryl-CoA dehydrogenase; OR: odds ratio; ART:
79 antiretroviral therapy; BMI: body mass index; TC: total cholesterol; HDL: high-density
80 lipoprotein; SBP: systolic blood pressure.

81

82

83

84

85 **1. Introduction**

86 Tryptophan is an essential amino acid for internal protein synthesis and the biosynthesis
87 of serotonin and melatonin in mammals. In humans, with the help of tryptophan 2,3-
88 dioxygenase (TDO) and indoleamine 2,3-dioxygenase1 (IDO1), tryptophan is mainly
89 catabolized through the kynurenine (KYN) pathway (1,2), in which several metabolites are
90 produced, such as KYN and kynurenic acid (KYNA). Tryptophan can also be metabolized
91 into a broad range of bioactive molecules, including indole and its derivatives [e.g., indole-3-
92 lactic acid (ILA), indole-3-acid-acetic (IAA), and indole-3-propionic acid (IPA)], through the
93 gut microbiota-dependent indole pathway (1,2). Some of these metabolites (e.g., IPA) exhibit
94 antioxidative and anti-inflammatory properties (1,2), and therefore might have potential
95 beneficial effects on human health.

96 Dysregulation of host tryptophan metabolism, particularly the depletion of tryptophan
97 and enhancement of the KYN pathway, has been noted in human immunodeficiency virus
98 (HIV) infection (3,4). Our work and other previous studies found that enhanced tryptophan
99 catabolism, measured by KYN-to-tryptophan ratio (KYN/TRP) or KYNA-to-tryptophan ratio
100 (KYNA/TRP), in people living with HIV (PLWH) was associated with subclinical
101 atherosclerosis indicated by carotid artery plaque (5-7). These observations were in line with
102 findings from studies of general populations (8-10), supporting the negative impacts of
103 disrupted tryptophan metabolism and metabolites generated from the KYN pathway on
104 cardiovascular disease (CVD) (11).

105 However, previous studies on tryptophan metabolism in relation to HIV infection and
106 atherosclerosis were predominantly limited to examination of the KYN pathway metabolites
107 (5,11,12); to date, whether other tryptophan metabolites (e.g., indole and the derivatives) are
108 altered in PLWH, and their associations with atherosclerosis remains unclear. Furthermore,
109 despite the well-known role of gut microbiota in tryptophan metabolism (1,2), no prior
110 studies have integrated data on gut microbiota and tryptophan metabolites in relation to
111 atherosclerosis among PLWH. Here, we aimed to investigate the interrelationship between

112 tryptophan metabolites, gut microbiota, and carotid artery plaque among women living with
113 and without HIV in the Women's Interagency HIV Study (WIHS) (13).

114 **2.Methods**

115 *2.1 Study design and population*

116 The WIHS was a multicenter longitudinal study of women living with or at high risk for
117 HIV infection designed to investigate the long-term, natural, and treated history of HIV
118 infection (13), and now is a part of the Multicenter AIDS Cohort Study (MACS)/WIHS
119 Combined Cohort Study (MWCCS) (14). Semi-annual visits consisted of structured
120 questionnaire interviews, physical examinations, and specimen collection. In 2015, a multi-
121 omics study was initiated among WIHS participants aged ≥ 35 years at three sites (Bronx,
122 Brooklyn, and Chicago) to evaluate the etiology and progression of carotid artery
123 atherosclerosis (15). Among them, 361 provided fecal samples for microbiome profiling and
124 received assessments of carotid artery plaque, and 251 had plasma tryptophan metabolites
125 measured. These participants were included in the present cross-sectional analyses.
126 Participants who took antibiotics within the 4 weeks of stool sample collection were excluded
127 from the microbiome association analyses. Detailed descriptions on the final sample sizes
128 according to specific analyses are listed in the **Supplementary Fig 1**.

129 *2.2 Assessment of HIV infection and other variables*

130 Data on demographic, behavioral, medication, clinical, and laboratory biochemistry
131 variables were collected following standardized protocols during the semi-annual visits. HIV
132 infection was ascertained by enzyme-linked immunosorbent assay with confirmation using
133 Western blot. HIV-specific parameters included CD4+ T-cell counts and HIV-1 viral load
134 (measured by multiparametric flow cytometry of peripheral blood mononuclear cells) and use
135 of antiretroviral therapy (ART). Cardiometabolic traits included body mass index (BMI), total
136 cholesterol (TC), high-density lipoprotein (HDL) cholesterol, systolic blood pressure (SBP),
137 fasting glucose, and use of lipid-lowering, antihypertensive, and antidiabetic medications.

138 *2.3 Ascertainment of carotid artery plaque*

139 High-resolution B-mode carotid artery ultrasound following a standardized protocol was

140 used to image 8 locations in the right carotid artery: the near and far walls of the common
141 carotid artery, carotid bifurcation, and internal and external carotid arteries (15,16). Focal
142 plaque measures were obtained at a centralized reading center (University of Southern
143 California). A focal plaque case was defined as an area with localized intima media thickness
144 (IMT) > 1.5 mm in any of the 8 imaged carotid artery locations.

145 ***2.4 Measurement of tryptophan metabolites***

146 Tryptophan metabolites were measured in blood plasma collected at the WIHS study
147 visit closest to the date of carotid artery plaque assessment using a Hydrophilic Interaction
148 Liquid Chromatography (HILIC)/Mass Spectrometry (MS) platform. Ten tryptophan
149 metabolites were quantified, including tryptophan, KYNA, KYN, quinolinate, xanthurenate,
150 serotonin, IPA, ILA, indoxylsulfate, and IAA. Raw data were processed using TraceFinder
151 software (Thermo Fisher Scientific) for targeted peak integration and manual review of a
152 subset of identified metabolites, which were then confirmed using authentic reference
153 standards. In this study, all 10 metabolites were detected in more than 75% of participants.
154 Levels of metabolites below detection were imputed by one half of the minimum detectable
155 level of that metabolite and then were transformed by inverse-normal transformation (INVT)
156 to improve normality and reduce the impacts of extreme values in association analyses. To
157 assess the relative production of IPA, KYNA, and KYN from tryptophan, three ratios were
158 constructed: IPA/TRP, KYNA/TRP, and KYN/TRP. In addition, the ratio of IPA to KYNA
159 (IPA/KYNA) was calculated to indicate the switch of tryptophan metabolism from the
160 production of KYNA to production of IPA.

161 ***2.5 Gut microbiome profiling***

162 Fecal samples were collected using a home-based self-collection kit during WIHS core-
163 visit as described previously (15,17). 16S ribosomal RNA (rRNA, V4 region) sequencing was
164 performed on DNA extracted from fecal samples to profile the gut microbiome. After quality
165 control, average coverage was approximately 35000 reads per sample. Details on the 16S
166 rRNA sequencing method used in this study have been published (15,17). In addition,
167 shotgun metagenomic sequencing based on a novel shallow-coverage method using the

168 Illumina NovaSeq platform was performed in the same fecal samples among 141 women who
169 had tryptophan metabolites data. De-multiplexing was applied to generate a shallow shotgun
170 per-sample FASTQ dataset, and the adapter sequences were trimmed. Information on
171 microbial taxonomic and functional profiles were generated using the shallow-shotgun
172 computational (SHOGUN) pipeline (18).

173 **2.6 Statistical analysis**

174 Study population characteristics were described as means (standard deviations, SDs) or
175 medians (inter-quartile ranges, IQRs) for continuous variables and frequencies (proportions)
176 for categorical variables. Differences in characteristics between women with and without
177 carotid artery plaque were compared using the Kruskal-Wallis test (for continuous variables)
178 and Chi-squared test (for categorical variables). Logistic regression was used to assess the
179 cross-sectional associations of tryptophan metabolites (inverse normal transformed and then
180 scaled by dividing 1 SD) and the calculated ratios with prevalent carotid artery plaque,
181 adjusting for age, race/ethnicity, education, smoking, study site and HIV serostatus (Model 1).
182 We further adjusted for conventional cardiometabolic risk factors, including BMI, TC, HDL,
183 SBP, and fasting glucose, and use of antihypertensive, lipid-lowering, and antidiabetic
184 medications (Model 2). Stratified analyses were conducted to assess potential effect
185 modification by HIV serostatus.

186 Analysis of Compositions of Microbiomes with Bias Correction (ANCOMBC) (19) was
187 performed to identify microbiome genera associated with tryptophan metabolites with
188 adjustment for the same set of covariates in the above Model 1. Herein, predominant genera
189 presented in > 10% of samples with a 0.01% or higher relative abundance were included.
190 Genera with a false discovery rate adjusted P value (FDR- q) < 0.25 were considered to be
191 significantly differentiated ones. Shotgun metagenomic data were further leveraged to
192 determine which species may drive the associations between identified genera and a given
193 tryptophan metabolite in ANCOMBC. Multivariable linear regression was used to examine
194 associations between bacterial species under the selected genera and tryptophan metabolites.
195 In addition, we performed ANCOMBC to examine associations of KEGG Ortholog groups

196 (KOs) with tryptophan metabolites. To assess joint associations of multiple genera associated
197 with a given metabolite with carotid artery plaque, a weighted bacteria score was constructed
198 as the sum of the products of central log ratio (CLR)-transformed abundances of identified
199 genera and their corresponding coefficients in ANCOMBC. We then examined the cross-
200 sectional associations of selected individual genera and the bacterial score with carotid artery
201 plaque using logistic regression, adjusting for covariates listed in the above Model 1. These
202 analyses were limited to tryptophan metabolites that were associated with both microbiome
203 genera and carotid artery plaque.

204 All analyses were conducted in R 3.4. Statistical significance was set at 0.05 (two-tailed)
205 unless otherwise stated.

206 **3. Results**

207 **3.1 Study population characteristics**

208 Among women with both carotid artery plaque and 16S rRNA sequencing data (n=361),
209 241 were living with HIV (67%) and 98 (27%) had carotid artery plaque (**Table 1**).
210 Compared with those without plaque, women with plaque were older (median: 58 vs 52 yrs)
211 and were more likely to take lipid-lowering (34% vs 20%), antihypertensive (60% vs 42%)
212 and antidiabetic (27.6% vs 15.6%) medications. No significant differences in other
213 characteristics, including HIV-related variables, were found between these two groups.
214 Similar patterns were observed when comparisons were limited to participants with collective
215 data on tryptophan metabolites and plaque (n=188) (**Supplementary Table 1**).

216 The Spearman correlation matrix among tryptophan metabolites (**Supplementary Fig 2**)
217 revealed moderate correlations ($0.11 < r_s < 0.54$) among those produced by KYN pathway
218 (KYN, quinolinate, KYNA, and xanthurenate), but relatively weak correlations among indole
219 derivatives ($-0.05 < r_s < 0.23$). Plasma KYN, quinolinate, and indoxysulfate levels as well as
220 KYN/TRP and KYNA/TRP were higher among women with HIV as compared to those
221 without HIV; but no differences were found for other metabolites and ratios by HIV
222 serostatus (**Supplementary Fig 3**).

223 **3.2 Associations between tryptophan metabolites and carotid artery plaque**

224 Among 10 tryptophan metabolites, only KYNA (OR=1.93, 95%CI: 1.12, 3.32 per one
225 SD increment) and IPA (OR=0.62, 95%CI: 0.40, 0.98) were associated with carotid artery
226 plaque in Model1 (**Fig 1**). We also found that KYNA/TRP was positively associated with
227 plaque (OR=1.83, 95%CI: 1.08, 3.09), while IPA/ KYNA presented inverse associations with
228 plaque (OR=0.51, 95%CI: 0.33, 0.80). The association between IPA and plaque was
229 attenuated and no longer significant, while other significant associations remained after
230 further adjusting for conventional cardiometabolic risk factors (**Fig 1**). Further analysis
231 indicated that the attenuation on the association of IPA might be due to the further adjustment
232 for diabetes related factors (e.g., fasting glucose and antidiabetic medications use)
233 (**Supplementary Table 2**).

234 Stratified analysis by HIV serostatus revealed that the associations of IPA and two ratios
235 of IPA (IPA/TRP and IPA/KYNA) with carotid artery plaque tended to be stronger among
236 women living with HIV compared to those without HIV, though no significant effect
237 modification was found (**Supplementary Table 3**). For example, IPA was significantly
238 associated with carotid artery plaque in women living with HIV (OR=0.40, 95%CI: 0.20,
239 0.80) but not in those without HIV (OR=0.88, 95%CI: 0.39, 1.99) ($P_{\text{for interaction}}=0.078$).

240 **3.3 Associations between gut microbiota features and tryptophan metabolites**

241 Using 16s rRNA sequencing data among 205 participants without use of antibiotics, we
242 identified 20 bacterial genera (FDR-q<0.25) associated with 7 tryptophan metabolites
243 (**Supplementary Table 4**). Among them, 6 genera were associated with IPA, with positive
244 associations being observed for 2 genera in the *Firmicute* phylum (i.e., *Roseburia* and
245 *Lachnospira*) and three unclassified groups (*Barnesiellaceae_unclassified*,
246 *Clostridiales_unclassified*, and *RF39_unclassified*), and an inverse association for
247 *Eggerthella* (**Fig 2A**). The other 14 genera were associated with tryptophan (n=5), IAA (n=4),
248 indoxylsulfate (n=3), xanturenate (n=2), KYN (n=1), and quinolinate (n=1) (**Supplementary**
249 **Table 4**). Most of these bacterial genera were associated with only one metabolite (**Fig 2B**
250 and **Supplementary Table 4**).

251 We then focused on IPA-associated bacterial genera given that IPA was the only
252 microbiota-dependent metabolite that was associated with carotid artery plaque in this study.
253 We used metagenomic sequencing data in a subsample (n=136) to identify which bacterial
254 species might drive the observed IPA-genera associations. To characterize three unclassified
255 genera, we first examined the genera under the *Barnesiellaceae* family and those under the
256 *Clostridiales* and *RF39* order that were not captured in the 16S rRNA data. Herein, we
257 additionally identified *Corprobacter* genus under the *Barnesiellaceae* family (**Fig 2C**), and 7
258 genera of 4 families under the *Clostridiales* order (**Supplementary Fig 4**) in the
259 metagenomics data. We found that the associations of *Barnesiellaceae_unclassified* with IPA
260 tended to be driven by *Coprobacter* genus ($P<0.05$), possibly by *Coprobacter_fastidiosus*
261 species (**Fig 2C**). Associations of *Clostridiale_unclassified* tended to be driven by
262 *Eubacterium* genus (**Supplementary Fig 4**) and affiliated species (**Fig 2C**) within the
263 *Eubacteriaceae* family, such as *Eubacterium_eligens* and *Eubacterium_ventriosum*. But no
264 bacteria within the *RF39* order were identified in metagenomic data. For genera *Roseburia*,
265 *Lachnospira* and *Eggerthella*, their associations with IPA tended to be driven by
266 *Roseburia_hominis*, *Lachnospira_multipara* and *Eggerthella_lenta*, respectively (**Fig 2C** and
267 **Supplementary Table 5**). In line with the results on plasma IPA levels between women
268 living with and without HIV infection, no significant differences were found for abundances
269 of the 6 IPA-associated genera or species by HIV serostatus (data not shown).

270 Further analysis of metagenomic function data identified 189 KOs (FDR-q<0.05)
271 associated with IPA (**Supplementary Fig 5A**), but none of them seem to be involved in the
272 metabolic pathway from tryptophan to IPA when searching the MetaCyc database. We found
273 two enzymes (i.e., Cs-FLDA (3-(aryl) acryloyl-CoA:(R)-3-(aryl) lactate CoA-transferase)
274 [K13607] and ACDS (butyryl-CoA dehydrogenase) [K00248]) that are involved in this
275 pathway in our metagenomics data, but they were not associated with IPA levels
276 (**Supplementary Fig 5B**).

277 **3.4 Associations between indole-3-propionate associated bacteria and carotid artery plaque**

278 We further linked the 6 IPA-associated bacteria genera with plaque and found that

279 genera having positive associations with IPA (**Fig 3A**) largely tended to be inversely
280 associated with plaque (**Fig 3B**). By constructing a weighted genera score with the inclusion
281 of the identified 6 genera and the other two previously reported IPA-associated genera (i.e.,
282 *Adlercreutzia* and *Faecalibacterium*) (20) that were marginally associated with IPA in the
283 current study (**Supplementary Table 4**), we found that the constructed IPA-associated
284 bacteria score was significantly positively associated with both plasma IPA levels and
285 IPA/KYNA (**Fig 3A**) and was inversely associated with plaque (**Fig 3B**). This association
286 with plaque was attenuated when further adjusting for IPA or IPA/KYNA (**Fig 3C and 3D**),
287 suggesting that the association might be partly explained by plasma IPA and enhanced IPA
288 production. Similar association patterns between IPA-associated bacteria score and plaque
289 were observed among 345 women with both plaque and 16S rRNA sequencing data
290 (**Supplementary Table 6**).

291 **4. Discussion**

292 In this study of women with or at risk for HIV infection, we found that plasma KYNA
293 and KYNA/TRP were positively associated with carotid artery plaque, independent of HIV
294 serostatus and traditional cardiovascular risk factors, which is line with our previous among
295 MWCCS participants during earlier visits (5). Furthermore, we found that plasma IPA and
296 IPA/KYNA were inversely associated with carotid artery plaque, with suggestive stronger
297 associations among women living with HIV compared to those without HIV. We identified
298 multiple gut bacteria associated with plasma IPA and the IPA-associated bacteria score were
299 also inversely associated with plaque.

300 Epidemiological studies either in HIV or non-HIV populations have linked enhanced
301 KYN pathway of tryptophan metabolism with multiple atherosclerotic effects, such as
302 increased macrophage-loaded cores of atherosclerotic plaques (21), carotid artery intima-
303 media thickness (IMT) (6), and elevated risk of myocardial infarction (11). Together with
304 these observations and our previous findings (5), our results highlight the potential of
305 metabolites (e.g., KYNA and KYN) generated from the KYN pathway associated with
306 elevated risk of CVD. Although gut microbiota might be involved in the tryptophan- KYN

307 metabolism pathway in the gut (1,12), we did not find many associations between gut
308 bacteria and plasma KYN pathway metabolites. Unlike indole metabolites (e.g., IPA) which
309 are microbiota dependent, circulating KYN pathway metabolites might be mainly attributed
310 to host tryptophan metabolism (1). However, this could also be partly due to limitations of
311 our 16S rRNA sequencing data that might not capture gut bacteria related to the production of
312 KYN metabolites.

313 The observed protective association between IPA and carotid artery plaque in our study
314 is consistent with current evidence in the literature that IPA is generally beneficial to the
315 cardiovascular system, possibly through suppression of proinflammatory cytokine expression
316 (22-24), promotion of macrophage reverse cholesterol transport (25), and reduction of
317 cellular reactive oxygen species (26,27), oxidative damage and lipid peroxidation (28,29).
318 Our results are also supported by previous findings in studies among general populations,
319 wherein lower plasma IPA levels were observed in patients with advanced atherosclerosis as
320 compared to healthy controls (25,30). Several prospective studies have linked higher
321 circulating IPA levels with lower risk of diabetes (20,31,32). In line with this, we also found
322 that the association between IPA and plaque could be partially explained by traditional CVD
323 risk factors, especially those related to diabetes. Interestingly, we observed a stronger
324 association between IPA and plaque among women living with HIV compared to those
325 without HIV; however, the statistical interaction test was borderline significant, which might
326 be due to the limited sample size. This result suggests that IPA might have extra favorable
327 relationship with cardiovascular health in people living with HIV, but further studies are
328 warranted to validate our findings and examine the underlying mechanisms.

329 Several bacteria, mostly in the Firmicutes phylum, have been found to be involved in the
330 production of IPA (2,33). Our study identified multiple bacterial genera, including those
331 previously reported (e.g., *Roseburia*, *Eubacterium*, *Faecalibacterium*, *Lachnospira*, and
332 unknown genera under the *RF39* order) (2,20,34) and potentially novel ones (e.g.,
333 *Coproacter*) associated with circulating IPA levels. Consistently, most of these bacteria
334 belongs to Firmicutes, and their positive associations with IPA might be related to host

335 dietary fiber intake (20). *Roseburia*, *Eubacterium*, *Faecalibacterium* and *Lachnospira* are
336 known for fiber degradation (35,36) and *Coprobacter* can be increased following laminaran
337 supplementation in rats (37). High fiber intake thus could increase the population of these
338 potential IPA producers in the gut, which in turn could shift tryptophan metabolism toward
339 IPA production (20). However, the lack of dietary data in our study prevents further testing of
340 this hypothesis. In addition, although several bacterial enzymes have been suggested to be
341 involved in the IPA production pathway (33), only two KOs of these enzymes were detected
342 in our metagenomic data, with relatively small abundance. They were not associated with
343 plasma IPA, which might be due to gaps between the measured abundances of bacterial genes
344 encoding enzymes and the real enzyme activity in the bacterial metabolite production (38).
345 Regarding the role of IPA-associated bacteria in the progression of atherosclerosis, other
346 potential mechanisms beyond IPA production could also be possible since the association
347 between IPA-associated bacteria score and carotid artery plaque were not fully explained by
348 IPA levels. For examples, many of these fiber-utilizing bacteria (e.g., *Roseburia*, *Eubacterium*,
349 *Faecalibacterium* and *Lachnospira*) are also producers of short-chain fatty acids that might be
350 beneficial to cardiovascular health (39).

351 Major strengths of this study include the relatively broad assessment of tryptophan
352 metabolites, including both KYN pathway metabolites and indole derivatives, and the
353 integrative analysis of gut microbiota with tryptophan metabolites in relation to carotid artery
354 plaque. Nevertheless, several caveats should be acknowledged. First, the moderate sample
355 size prevented us from conducting comprehensive stratified analyses to assess potential effect
356 modification by HIV serostatus and other interesting HIV infection related characteristics.
357 Second, the gut microbiome profiling predominantly relied on the 16S rRNA sequencing,
358 which has a relatively low taxonomy resolution and insufficient information on microbial
359 functional profiles (40). Although our shallow shotgun metagenomics in a subsample
360 revealed interesting data at species level, it was still limited to examine microbial functional
361 components. Third, the lack of dietary data further hinders us from assessing the microbiota-
362 diet interaction in the relationship between tryptophan metabolites and carotid artery plaque.

363 Finally, the nature of this observational investigation with a cross-sectional design precludes
364 causal inference regarding the observed associations.

365 **5. Conclusions**

366 This cross-sectional study among women from the WIHS extended our prior findings on
367 the unfavorable associations between tryptophan-KYN pathway metabolites and carotid
368 artery atherosclerosis (5) to demonstrate a favorable relationship between IPA, a microbially
369 produced metabolite from tryptophan, and carotid artery atherosclerosis, especially in women
370 with HIV infection. Gut bacteria associated with higher IPA levels were also favorably linked
371 with carotid artery plaque. These findings suggest a potential beneficial role of IPA and
372 associated gut microbiota in atherosclerosis and CVD. Further prospective studies with larger
373 sample sizes and metagenomics data are warranted to confirm our findings and reveal
374 underlying mechanisms.

375 **Supplementary Information:** Supplementary Tables and Figs can be found at online.

376 **CRedit authorship contribution statement**

377 Kai Luo: Conceptualization, Formal analysis, Methodology, Writing – original draft. Zheng
378 Wang, Tao Wang, Christopher C Sollecito, Evan Grassi, Fanua Wiek, Lauren St Peter,
379 Mykhaylo Usyk, and Clary B Clish: Methodology and data curation. Brandilyn A Peters,
380 David B Hanna, Wendy S Post, Alan L Landay, Howard N Hodis, Kathleen M Weber, Audrey
381 French, Elizabeth T Golub, Jason Lazar, Deborah Gustafson, Anjali Sharma, Kathryn Anastos,
382 Rob Knight, Robert C Kaplan and Robert D Burk: Writing – review & editing. Qibin Qi:
383 Conceptualization, Supervision, Project administration, Funding acquisition, Writing –
384 review & editing. The authors read and approved the final manuscript.

385 **Acknowledgments**

386 Data in this manuscript were collected by the Women’s Interagency HIV Study (WIHS), now
387 the MACS/WIHS Combined Cohort Study (MWCCS). The authors gratefully acknowledge
388 the contributions of the study participants and dedication of the staff at the MWCCS sites.

389 **Disclaimer.** The contents of this article are solely the responsibility of the authors and do not
390 represent the official views of the National Institutes of Health (NIH).

391 **Financial support.** This study was supported by the National Heart, Lung, and Blood
392 Institute (NHLBI) R01HL140976. Other related funding sources included K01HL129892,
393 K01HL137557, R01HL126543, R01 HL132794, R01HL083760 and R01HL095140 from
394 the NHLBI, R01MD011389 from the National Institute on Minority Health and Health
395 Disparities, U01 AI035004 and the Einstein-Rockefeller-CUNY Center for AIDS Research
396 (P30AI124414) funded by the National Institute of Allergy and Infectious Diseases, Einstein
397 Cancer Research Center (P30CA013330) funded by National Cancer Institute, and the
398 Feldstein Medical Foundation Research Grant to Q.Q.
399 MWCCS (Principal Investigators): Atlanta CRS (Ighovwerha Ofotokun, Anandi Sheth, and
400 Gina Wingood), U01-HL146241; Baltimore CRS (Todd Brown and Joseph Margolick), U01-
401 HL146201; Bronx CRS (Kathryn Anastos, David Hanna, and Anjali Sharma), U01-
402 HL146204; Brooklyn CRS (Deborah Gustafson and Tracey Wilson), U01-HL146202; Data
403 Analysis and Coordination Center (Gypsyamber D’Souza, Stephen Gange and Elizabeth
404 Topper), U01-HL146193; Chicago-Cook County CRS (Mardge Cohen and Audrey French),
405 U01-HL146245; Chicago-Northwestern CRS (Steven Wolinsky), U01-HL146240; Northern
406 California CRS (Bradley Aouizerat, Jennifer Price, and Phyllis Tien), U01-HL146242; Los
407 Angeles CRS (Roger Detels and Matthew Mimiaga), U01-HL146333; Metropolitan
408 Washington CRS (Seble Kassaye and Daniel Merenstein), U01-HL146205; Miami CRS
409 (Maria Alcaide, Margaret Fischl, and Deborah Jones), U01-HL146203; Pittsburgh CRS
410 (Jeremy Martinson and Charles Rinaldo), U01-HL146208; UAB-MS CRS (Mirjam-Colette
411 Kempf, Jodie Dionne-Odom, and Deborah Konkle-Parker), U01-HL146192; UNC CRS
412 (Adaora Adimora and Michelle Floris-Moore), U01-HL146194. The MWCCS is funded
413 primarily by the National Heart, Lung, and Blood Institute (NHLBI), with additional co-
414 funding from the Eunice Kennedy Shriver National Institute Of Child Health & Human
415 Development (NICHD), National Institute On Aging (NIA), National Institute Of Dental &
416 Craniofacial Research (NIDCR), National Institute Of Allergy And Infectious Diseases
417 (NIAID), National Institute Of Neurological Disorders And Stroke (NINDS), National
418 Institute Of Mental Health (NIMH), National Institute On Drug Abuse (NIDA), National

419 Institute Of Nursing Research (NINR), National Cancer Institute (NCI), National Institute on
420 Alcohol Abuse and Alcoholism (NIAAA), National Institute on Deafness and Other
421 Communication Disorders (NIDCD), National Institute of Diabetes and Digestive and
422 Kidney Diseases (NIDDK), National Institute on Minority Health and Health Disparities
423 (NIMHD), and in coordination and alignment with the research priorities of the National
424 Institutes of Health, Office of AIDS Research (OAR). MWCCS data collection is also
425 supported by UL1-TR000004 (UCSF CTSA), UL1-TR003098 (JHU ICTR), UL1-TR001881
426 (UCLA CTSD), P30-AI-050409 (Atlanta CFAR), P30-AI-073961 (Miami CFAR), P30-AI-
427 050410 (UNC CFAR), P30-AI-027767 (UAB CFAR), and P30-MH-116867 (Miami
428 CHARM).

429 **Ethics declaration:** All participants provided written informed content and the present
430 study was reviewed and approved by the Institutional Review Board (IRB) at Albert Einstein
431 College of Medicine (IRB no: 2018-9386).

432 **Competing interest:** The authors declare that the research was conducted in the absence of
433 any commercial or financial relationships that could be construed as a potential competing
434 interest.

435 **Data availability statement:** Any requests as to the potential replication or source data
436 should be addressed to the corresponding author.

437
438

439 **References**

- 440 1. Agus A, Planchais J, Sokol H. Gut Microbiota Regulation of Tryptophan Metabolism in
441 Health and Disease. *Cell Host Microbe*. 2018;23(6):716-724.
- 442 2. Roager HM, Licht TR. Microbial tryptophan catabolites in health and disease. *Nat*
443 *Commun*. 2018;9(1):3294.
- 444 3. Gelpi M, Hartling HJ, Ueland PM, Ullum H, Troseid M, Nielsen SD. Tryptophan
445 catabolism and immune activation in primary and chronic HIV infection. *BMC Infect Dis*.
446 2017;17(1):349.
- 447 4. Murray MF. Tryptophan depletion and HIV Tryptophan depletion and HIV infection: a
448 metabolic link to pathogenesis. *The Lancet infectious diseases*. 2003;3(10):644-652.
- 449 5. Qi Q, Hua S, Clish CB, Scott JM, Hanna DB, Wang T, Haberlen SA, Shah SJ, Glesby MJ,
450 Lazar JM, Burk RD, Hodis HN, Landay AL, Post WS, Anastos K, Kaplan RC. Plasma
451 Tryptophan-Kynurenine Metabolites Are Altered in Human Immunodeficiency Virus
452 Infection and Associated With Progression of Carotid Artery Atherosclerosis. *Clin Infect Dis*.
453 2018;67(2):235-242.
- 454 6. Boyd A, Boccara F, Meynard JL, Ichou F, Bastard JP, Fellahi S, Samri A, Sauce D,
455 Haddour N, Autran B, Cohen A, Girard PM, Capeau J, Collaboration in Hiv I, Cardiovascular
456 Disease s. Serum Tryptophan-Derived Quinolinic Acid and Indole-3-Acetic Acid Are Associated With
457 Carotid Intima-Media Thickness and its Evolution in HIV-Infected Treated Adults. *Open*
458 *Forum Infect Dis*. 2019;6(12):ofz516.
- 459 7. Siedner MJ, Kim JH, Nakku RS, Bibangambah P, Hemphill L, Triant VA, Haberer JE,
460 Martin JN, Mocello AR, Boum Y, 2nd, Kwon DS, Tracy RP, Burdo T, Huang Y, Cao H,
461 Okello S, Bangsberg DR, Hunt PW. Persistent Immune Activation and Carotid
462 Atherosclerosis in HIV-Infected Ugandans Receiving Antiretroviral Therapy. *J Infect Dis*.
463 2016;213(3):370-378.
- 464 8. Kato A, Suzuki Y, Suda T, Suzuki M, Fujie M, Takita T, Furuhashi M, Maruyama Y,
465 Chida K, Hishida A. Relationship between an increased serum kynurenine/tryptophan ratio
466 and atherosclerotic parameters in hemodialysis patients. *Hemodial Int*. 2010;14(4):418-424.
- 467 9. Pawlak K, Brzosko S, Mysliwiec M, Pawlak D. Kynurenine, quinolinic acid--the new
468 factors linked to carotid atherosclerosis in patients with end-stage renal disease.
469 *Atherosclerosis*. 2009;204(2):561-566.
- 470 10. Sulo G, Vollset SE, Nygard O, Midttun O, Ueland PM, Eussen SJ, Pedersen ER, Tell GS.
471 Neopterin and kynurenine-tryptophan ratio as predictors of coronary events in older adults,
472 the Hordaland Health Study. *Int J Cardiol*. 2013;168(2):1435-1440.
- 473 11. Pedersen ER, Tuseth N, Eussen SJ, Ueland PM, Strand E, Svingen GF, Midttun O,
474 Meyer K, Mellgren G, Ulvik A, Nordrehaug JE, Nilsen DW, Nygard O. Associations of
475 plasma kynurenines with risk of acute myocardial infarction in patients with stable angina
476 pectoris. *Arterioscler Thromb Vasc Biol*. 2015;35(2):455-462.
- 477 12. Vujkovic-Cvijin I, Dunham RM, Iwai S, Maher MC, Albright RG, Broadhurst MJ,
478 Hernandez RD, Lederman MM, Huang Y, Somsouk M. Dysbiosis of the gut microbiota is
479 associated with HIV disease progression and tryptophan catabolism. *Science translational*
480 *medicine*. 2013;5(193):193ra191-193ra191.

- 481 13. Adimora AA, Ramirez C, Benning L, Greenblatt RM, Kempf MC, Tien PC, Kassaye SG,
482 Anastos K, Cohen M, Minkoff H, Wingood G, Ofotokun I, Fischl MA, Gange S. Cohort
483 Profile: The Women's Interagency HIV Study (WIHS). *Int J Epidemiol.* 2018;47(2):393-394i.
- 484 14. D'Souza G, Bhondoekhan F, Benning L, Margolick JB, Adedimeji AA, Adimora AA,
485 Alcaide ML, Cohen MH, Detels R, Friedman MR, Holman S, Konkle-Parker DJ, Merenstein
486 D, Ofotokun I, Palella F, Altekruze S, Brown TT, Tien PC. Characteristics of the
487 MACS/WIHS Combined Cohort Study: Opportunities for Research on Aging With HIV in
488 the Longest US Observational Study of HIV. *Am J Epidemiol.* 2021;190(8):1457-1475.
- 489 15. Wang Z, Peters BA, Usyk M, Xing J, Hanna DB, Wang T, Post WS, Landay AL, Hodis
490 HN, Weber K, French A, Golub ET, Lazar J, Gustafson D, Kassaye S, Aouizerat B, Haberlen
491 S, Malvestutto C, Budoff M, Wolinsky SM, Sharma A, Anastos K, Clish CB, Kaplan RC,
492 Burk RD, Qi Q. Gut Microbiota, Plasma Metabolomic Profiles, and Carotid Artery
493 Atherosclerosis in HIV Infection. *Arterioscler Thromb Vasc Biol.* 2022;42(8):1081-1093.
- 494 16. Hanna DB, Post WS, Deal JA, Hodis HN, Jacobson LP, Mack WJ, Anastos K, Gange SJ,
495 Landay AL, Lazar JM, Palella FJ, Tien PC, Witt MD, Xue X, Young MA, Kaplan RC,
496 Kingsley LA. HIV Infection Is Associated With Progression of Subclinical Carotid
497 Atherosclerosis. *Clin Infect Dis.* 2015;61(4):640-650.
- 498 17. Moon JY, Zolnik CP, Wang Z, Qiu Y, Usyk M, Wang T, Kizer JR, Landay AL, Kurland IJ,
499 Anastos K, Kaplan RC, Burk RD, Qi Q. Gut microbiota and plasma metabolites associated
500 with diabetes in women with, or at high risk for, HIV infection. *EBioMedicine.* 2018;37:392-
501 400.
- 502 18. Hillmann B, Al-Ghalith GA, Shields-Cutler RR, Zhu Q, Gohl DM, Beckman KB, Knight
503 R, Knights D. Evaluating the Information Content of Shallow Shotgun Metagenomics.
504 *mSystems.* 2018;3(6).
- 505 19. Lin H, Peddada SD. Analysis of compositions of microbiomes with bias correction. *Nat*
506 *Commun.* 2020;11(1):3514.
- 507 20. Qi Q, Li J, Yu B, Moon JY, Chai JC, Merino J, Hu J, Ruiz-Canela M, Rebholz C, Wang Z,
508 Usyk M, Chen GC, Porneala BC, Wang W, Nguyen NQ, Feofanova EV, Grove ML, Wang TJ,
509 Gerszten RE, Dupuis J, Salas-Salvado J, Bao W, Perkins DL, Daviglius ML, Thyagarajan B,
510 Cai J, Wang T, Manson JE, Martinez-Gonzalez MA, Selvin E, Rexrode KM, Clish CB, Hu
511 FB, Meigs JB, Knight R, Burk RD, Boerwinkle E, Kaplan RC. Host and gut microbial
512 tryptophan metabolism and type 2 diabetes: an integrative analysis of host genetics, diet, gut
513 microbiome and circulating metabolites in cohort studies. *Gut.* 2022;71(6):1095-1105.
- 514 21. Niinisalo P, Oksala N, Levula M, Pelto-Huikko M, Jarvinen O, Salenius JP, Kytomaki L,
515 Soini JT, Kahonen M, Laaksonen R, Hurme M, Lehtimaki T. Activation of indoleamine 2,3-
516 dioxygenase-induced tryptophan degradation in advanced atherosclerotic plaques: Tampere
517 vascular study. *Ann Med.* 2010;42(1):55-63.
- 518 22. Garcez ML, Tan VX, Heng B, Guillemin GJ. Sodium Butyrate and Indole-3-propionic
519 Acid Prevent the Increase of Cytokines and Kynurenine Levels in LPS-induced Human
520 Primary Astrocytes. *Int J Tryptophan Res.* 2020;13:1178646920978404.
- 521 23. Zhao ZH, Xin FZ, Xue Y, Hu Z, Han Y, Ma F, Zhou D, Liu XL, Cui A, Liu Z, Liu Y, Gao
522 J, Pan Q, Li Y, Fan JG. Indole-3-propionic acid inhibits gut dysbiosis and endotoxin leakage

- 523 to attenuate steatohepatitis in rats. *Exp Mol Med*. 2019;51(9):1-14.
- 524 24. Venkatesh M, Mukherjee S, Wang H, Li H, Sun K, Benechet AP, Qiu Z, Maher L,
525 Redinbo MR, Phillips RS, Fleet JC, Kortagere S, Mukherjee P, Fasano A, Le Ven J,
526 Nicholson JK, Dumas ME, Khanna KM, Mani S. Symbiotic bacterial metabolites regulate
527 gastrointestinal barrier function via the xenobiotic sensor PXR and Toll-like receptor 4.
528 *Immunity*. 2014;41(2):296-310.
- 529 25. Xue H, Chen X, Yu C, Deng Y, Zhang Y, Chen S, Chen X, Chen K, Yang Y, Ling W. Gut
530 Microbially Produced Indole-3-Propionic Acid Inhibits Atherosclerosis by Promoting
531 Reverse Cholesterol Transport and Its Deficiency Is Causally Related to Atherosclerotic
532 Cardiovascular Disease. *Circ Res*. 2022:101161CIRCRESAHA122321253.
- 533 26. Poeggeler B, Pappolla MA, Hardeland R, Rassoulpour A, Hodgkins PS, Guidetti P,
534 Schwarcz R. Indole-3-propionate: a potent hydroxyl radical scavenger in rat brain. *Brain*
535 *research*. 1999;815(2):382-388.
- 536 27. Hardeland R, Zsizsik B, Poeggeler B, Fuhrberg B, Holst S, Coto-Montes A. Indole-3-
537 pyruvic and-propionic acids, kynurenic acid, and related metabolites as luminophores and
538 free-radical scavengers. Tryptophan, Serotonin, and Melatonin: Springer; 1999:389-395.
- 539 28. Karbownik M, Stasiak M, Zygmunt A, Zasada K, Lewiński A. Protective effects of
540 melatonin and indole-3-propionic acid against lipid peroxidation, caused by potassium
541 bromate in the rat kidney. *Cell Biochemistry and Function: Cellular biochemistry and its*
542 *modulation by active agents or disease*. 2006;24(6):483-489.
- 543 29. Karbownik M, Stasiak M, Zasada K, Zygmunt A, Lewinski A. Comparison of potential
544 protective effects of melatonin, indole-3-propionic acid, and propylthiouracil against lipid
545 peroxidation caused by potassium bromate in the thyroid gland. *Journal of cellular*
546 *biochemistry*. 2005;95(1):131-138.
- 547 30. Cason CA, Dolan KT, Sharma G, Tao M, Kulkarni R, Helenowski IB, Doane BM, Avram
548 MJ, McDermott MM, Chang EB, Ozaki CK, Ho KJ. Plasma microbiome-modulated indole-
549 and phenyl-derived metabolites associate with advanced atherosclerosis and postoperative
550 outcomes. *J Vasc Surg*. 2018;68(5):1552-1562 e1557.
- 551 31. de Mello VD, Paananen J, Lindstrom J, Lankinen MA, Shi L, Kuusisto J, Pihlajamaki J,
552 Auriola S, Lehtonen M, Rolandsson O, Bergdahl IA, Nordin E, Ilanne-Parikka P, Keinanen-
553 Kiukaanniemi S, Landberg R, Eriksson JG, Tuomilehto J, Hanhineva K, Uusitupa M.
554 Indolepropionic acid and novel lipid metabolites are associated with a lower risk of type 2
555 diabetes in the Finnish Diabetes Prevention Study. *Sci Rep*. 2017;7:46337.
- 556 32. Tuomainen M, Lindstrom J, Lehtonen M, Auriola S, Pihlajamaki J, Peltonen M,
557 Tuomilehto J, Uusitupa M, de Mello VD, Hanhineva K. Associations of serum
558 indolepropionic acid, a gut microbiota metabolite, with type 2 diabetes and low-grade
559 inflammation in high-risk individuals. *Nutr Diabetes*. 2018;8(1):35.
- 560 33. Dodd D, Spitzer MH, Van Treuren W, Merrill BD, Hryckowian AJ, Higginbottom SK, Le
561 A, Cowan TM, Nolan GP, Fischbach MA, Sonnenburg JL. A gut bacterial pathway
562 metabolizes aromatic amino acids into nine circulating metabolites. *Nature*.
563 2017;551(7682):648-652.
- 564 34. Menni C, Hernandez MM, Vital M, Mohny RP, Spector TD, Valdes AM. Circulating

- 565 levels of the anti-oxidant indolepropionic acid are associated with higher gut microbiome
566 diversity. *Gut Microbes*. 2019;10(6):688-695.
- 567 35. Koh A, De Vadder F, Kovatcheva-Datchary P, Backhed F. From Dietary Fiber to Host
568 Physiology: Short-Chain Fatty Acids as Key Bacterial Metabolites. *Cell*. 2016;165(6):1332-
569 1345.
- 570 36. De Souza CB, Jonathan M, Saad SMI, Schols HA, Venema K. Degradation of fibres
571 from fruit by-products allows selective modulation of the gut bacteria in an in vitro model of
572 the proximal colon. *Journal of Functional Foods*. 2019;57:275-285.
- 573 37. Nakata T, Kyoui D, Takahashi H, Kimura B, Kuda T. Inhibitory effects of laminaran and
574 alginate on production of putrefactive compounds from soy protein by intestinal microbiota
575 in vitro and in rats. *Carbohydr Polym*. 2016;143:61-69.
- 576 38. Ferrell M, Bazeley P, Wang Z, Levison BS, Li XS, Jia X, Krauss RM, Knight R, Lusi AJ,
577 Garcia-Garcia JC, Hazen SL, Tang WHW. Fecal Microbiome Composition Does Not Predict
578 Diet-Induced TMAO Production in Healthy Adults. *J Am Heart Assoc*. 2021;10(21):e021934.
- 579 39. Markowiak-Kopec P, Slizewska K. The Effect of Probiotics on the Production of Short-
580 Chain Fatty Acids by Human Intestinal Microbiome. *Nutrients*. 2020;12(4).
- 581 40. Durazzi F, Sala C, Castellani G, Manfreda G, Remondini D, De Cesare A. Comparison
582 between 16S rRNA and shotgun sequencing data for the taxonomic characterization of the
583 gut microbiota. *Sci Rep*. 2021;11(1):3030.
- 584
- 585
- 586

587

588

Table 1. Population characteristics by carotid artery plaque status (N=361)

Characteristics	Without plaque (n = 263)	With plaque (n = 98)	<i>P</i> ^a
Age (years)	51.6 (7.9)	57.5 (7.0)	<0.001
BMI (kg/m ²)	31.9 (7.9)	30.9 (7.8)	0.18
Race (n,%)			0.95
African American	187 (71.1%)	68 (69.4%)	
Hispanic	59 (22.4%)	23 (23.5%)	
White/others	17 (6.5%)	7 (7.1%)	
Education levels (n, %)			0.61
Before Highschool	121 (46%)	43 (43.9%)	
Highschool	80 (30.4%)	27 (27.6%)	
College and above	62 (23.6%)	28 (28.6%)	
Family annual income (n, %)			0.76
<12,000\$	158 (60%)	63 (64.3%)	
12,000~24,000\$	59 (22.4%)	20 (20.4%)	
>24,000\$	46 (17.5%)	15 (15.3%)	
Smoking status (n,%)			0.08
Never smoker	59 (22.4%)	14 (14.3%)	
Current smoker	109 (41.4%)	37 (37.8%)	
Former smoker	95 (36.1%)	47 (47.9%)	
Total cholesterol (mg/dL)	187.9 (36.6)	188.9 (36.6)	0.78
HDL cholesterol (mg/dL)	57.6 (17.9)	57.7 (19.0)	0.98
Systolic blood pressure (mmHg)	127.8 (19.4)	134.4 (21.9)	0.01
Fasting glucose (mg/dL)	98.0 (26.7)	100.7 (33.1)	0.84
Took lipids lowering medication (n,%)	52 (19.8%)	33 (33.7%)	0.06
Took antihypertensive medication (n, %)	111 (42.2%)	59 (60.2%)	0.02
Took antidiabetic medication (n,%)	41 (15.6%)	27 (27.6%)	0.01
HIV positive (n,%)	172 (65.4%)	69 (70.4%)	0.40
Highly active ART use in past 6 months among HIV ⁺ ^b	157 (91.2%)	65 (94.2%)	0.40
CD4 positive cells (per mm ³) ^b	679.0 (429.3, 923.8)	646.0 (523.0, 860.0)	0.90
Detectable HIV RNA (n,%) ^b	52 (30.4%)	18 (26.1%)	0.61
HIV RNA virus load (cp/mL) ^c	71.0 (36.5, 1,912.5)	43.0 (33.50, 224.0)	0.40
Antibiotics use (n,%) ^d	12 (4.6%)	4 (4.1%)	0.98

589

590

591

592

593

594

595

596

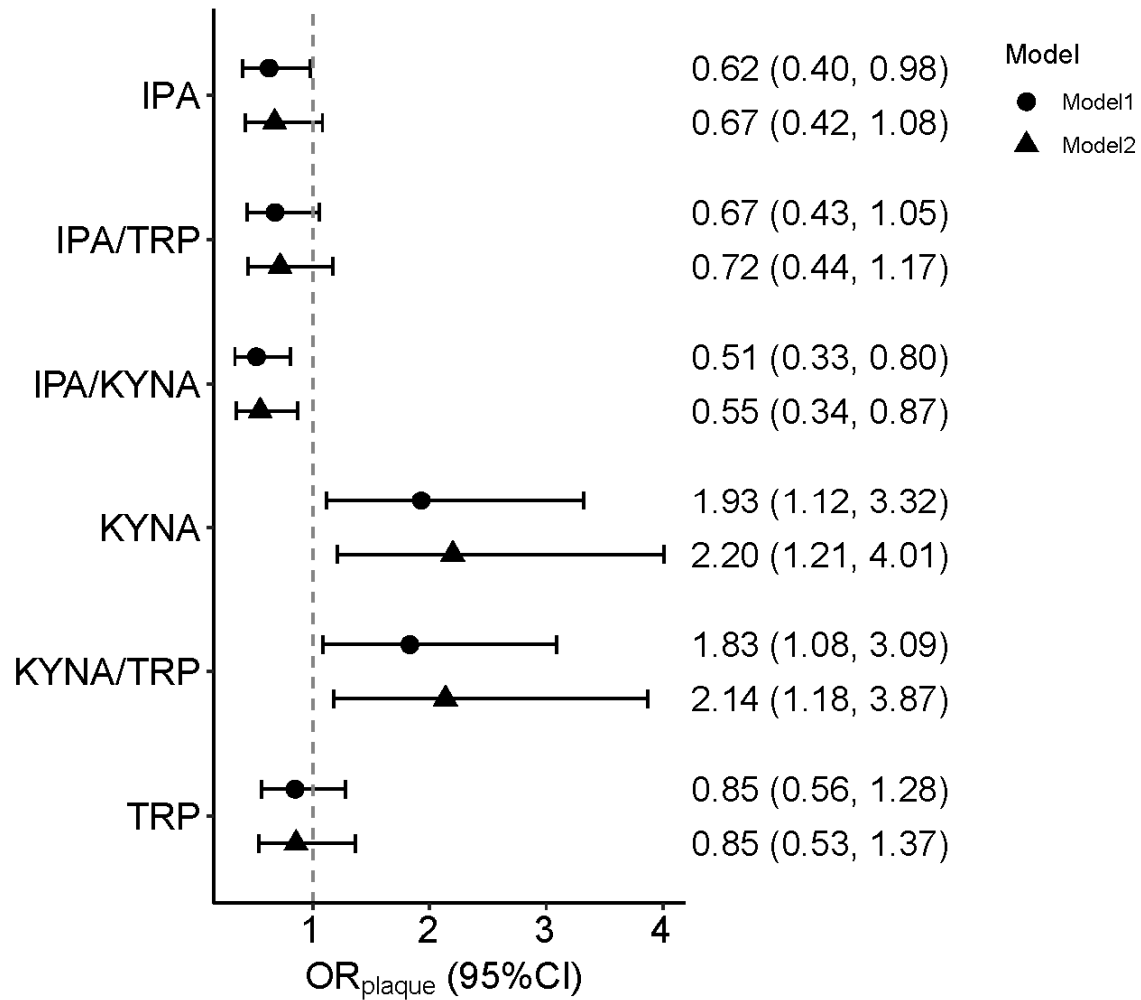
597

598

599

Notes: ^a *P* values were generated according to student Student's t-test (for normally distributed variables), Kruskal–Wallis test for (for highly skewed variables), and Chi-squared Test (for categorical variables); ^b only available among HIV⁺; ^c only among participants with HIV RNA detectable. Continuous variables were presented as mean (standard deviation [SD]), except for CD4 positive cells and HIV RNA virus load, which were presented as median (interquartile range, IQR) due to their highly skewed distributions; ^d participants with antibiotic use were excluded in the microbiome analyses.

600



601

602

603

604

605

606

607

608

609

610

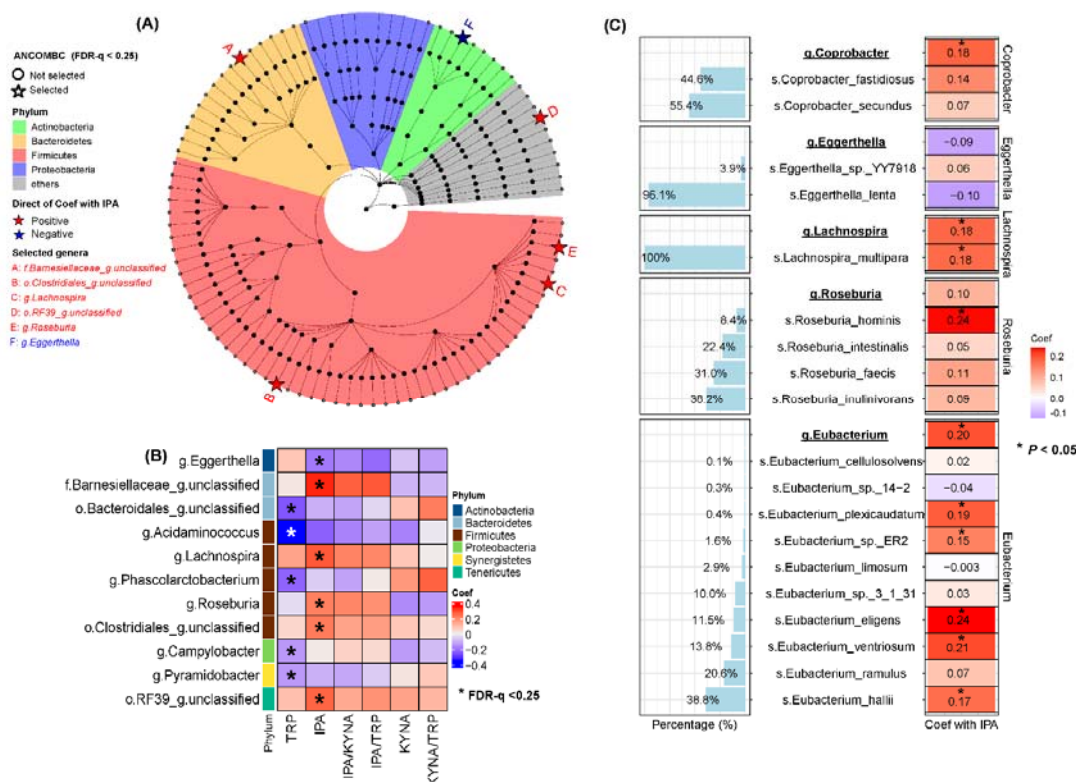
611

612

613

Fig 1. Associations of selected tryptophan (TRP) metabolites and derived ratios with prevalent carotid artery plaque (N=188). Estimates [odds ratio of carotid artery plaque (OR_{plaque}) and 95% confidence interval (CI)] per one SD increase in TRP metabolites concentrations (after inverse normal transformation) based on logistic regression. Model 1 was adjusted for age, race/ethnicity, study sites, education, smoking and HIV serostatus at visit. Model 2 was additionally adjusted for BMI, total cholesterol, HDL cholesterol, systolic blood pressure, fasting glucose, took antihypertensive medication, took lipids lowering medication, and took antidiabetic medication. Results of the other TRP metabolites were presented in the Supplementary Table 2. Abbreviations: IPA: indole-3-propionate; TRP: tryptophan; KYNA: kynurenic acid. IPA/TRP, KYNA/TRP, and IPA/KYNA were the ratios of the corresponding two metabolites.

614

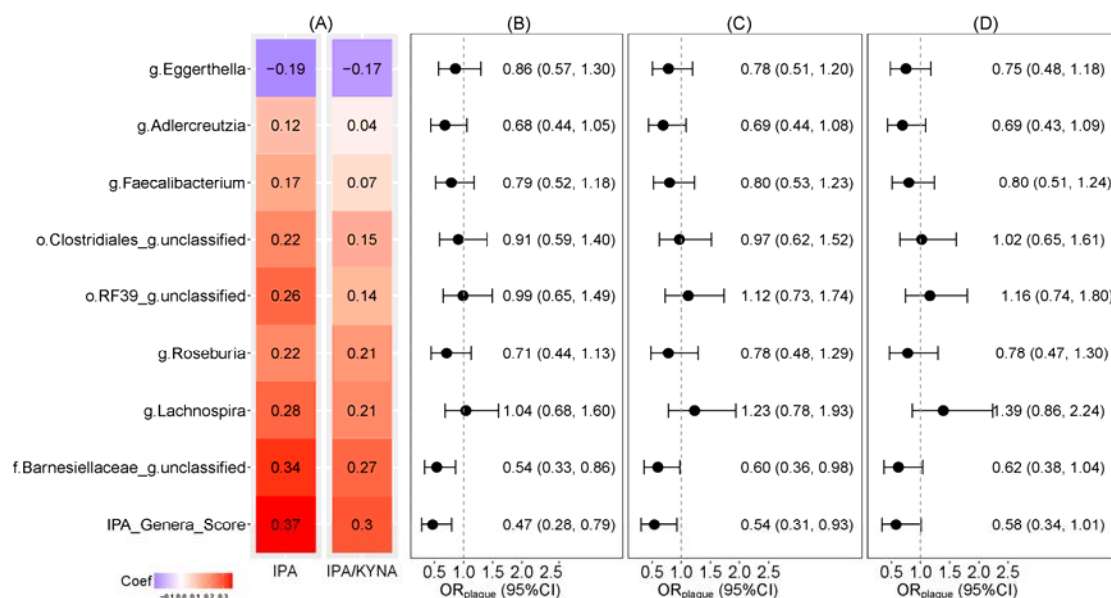


615

616 **Fig 2.** Taxonomic features associated with selected plasma tryptophan (TRP) metabolites. (A)
 617 presents the phylogenetic tree for taxonomic features of the included 97 predominant genera in the
 618 ANCOMBC analysis for associations with tryptophan metabolites (n=205). Stars with letters (from A
 619 to F) refer to indole-3-propionate (IPA) -associated genera (FDR-q<0.25). (B) presents the heatmap of
 620 the coefficients of associations of IPA or tryptophan associated genera with tryptophan, IPA,
 621 kynurenic acid (KYNA), IPA/TRP, IPA/KYNA, and KYNA/TRP in ANCOMBC while adjusting for
 622 age, race/ethnicity, study sites, education, smoking, and HIV serostatus at visit. The numeric results
 623 were presented in the Supplementary Table 4. (C) presents the relationship (coefficients per SD
 624 increment in taxa) between the identified species within IPA-associated genera (bolded and underlined)
 625 and IPA levels among participants with shotgun sequencing data (n=136) (the right heatmap). The left
 626 boxplot presents the percentages of these species within the specific genus. Prefixes of "o.", "f.", "g.",
 627 and "s." refer to the taxa at the order, family, genus and species levels, respectively. The numeric
 628 results were presented in the Supplementary Table 5.
 629

630

631



632

633 **Fig 3.** Associations of indole-3-propionate (IPA) associated-genera with prevalent carotid artery
634 plaque. OR_{plaque} refer to the odds ratio (OR) of carotid artery plaque. (A) presents the regression
635 coefficients for the associations of selected IPA-associated genera and IPA_genera_score with IPA
636 levels and IPA-to-kynurenic acid ratio (IPA/KYNA) (n=205). (B) presents the associations of IPA
637 associated genera and IPA_genera_score among participants with collective data on carotid artery
638 plaque, 16S rRNA sequencing and IPA levels (n=163, no of plaque cases =38). (C) associations
639 additionally adjusted for IPA levels. (D) associations additionally adjusted for IPA/KYNA. Estimates
640 in (A) to (D) were all adjusted for age, race/ethnicity, study sites, education status, smoking status,
641 and HIV serostatus at visit. Abundances of genera were centered log ratio (CLR) transformed and then
642 were scaled into Z-scores; the IPA_genera_score were the weighted sum of CLR values of selected
643 genera, where the weights were their corresponding coefficients in ANCOMBC analysis. The weights
644 of genera that were negatively associated with IPA concentrations were reversed in the calculation of
645 IPA_genera_score. *Adlercreutzia* and *Faecalibacterium* are the two previously reported IPA-
646 associated genera (doi:10.1136/gutjnl-2021-324053) but were marginally associated with IPA levels in
647 present analysis ($P = 0.067$ and $P = 0.056$, respectively). Prefixes of “o.”, “f.”, and “g” refer to the
648 taxa at the order, family, and genus levels, respectively.