

A Subphenotype-to-Genotype Approach Reveals Disproportionate Megalencephaly Autism Risk Genes

Sierra S. Nishizaki^{1,2,3,4}, Natasha Ann F. Mariano^{1,5}, Gabriana N. La¹, José M. Uribe-Salazar^{1,6}, Gulhan Kaya¹, Derek Sayre Andrews^{3,4}, Christine Wu Nordahl^{3,4}, David G. Amaral^{3,4}, Megan Y. Dennis^{1,3,4,6†}

¹Genome Center, ²Autism Research Training Program, ³Department of Psychiatry and Behavioral Sciences, ⁴MIND Institute, ⁵Postbaccalaureate Research Education Program ⁶Department of Biochemistry & Molecular Medicine, University of California Davis, CA, USA

†Corresponding author:

Megan Y. Dennis, Ph.D.
University of California, Davis
School of Medicine
One Shields Avenue
Genome Center, 4303 GBSF
Davis, CA 95616
Email: mydennis@ucdavis.edu

Supplementary Figures

Supplementary Figure 1. Head circumference v. height percentile of ASD-M SSC probands.

Supplementary Figure 2. ASD-DM and ASD-M families with *de novo* variants from the Autism Phenome Project and the Simons Simplex Cohort with impacted genes that were screened using zebrafish in this study.

Supplementary Figure 3. Polyacrylamide gels showing the efficiency of each of the four CRISPR gRNAs chosen for the 10 genes tested in zebrafish.

Supplementary Figure 4. Lateral VAST measurements of *ythdf2* knockout embryos at 3dpf.

Supplementary Figure 5. Expression of *YTHDF2* in zebrafish and human.

Supplementary Tables

Supplementary Table 1. ASD-DM and ASD-M probands from the SSC and APP cohorts. DM, disproportionate macrocephaly; RM, relative macrocephaly; SO, somatic overgrowth.

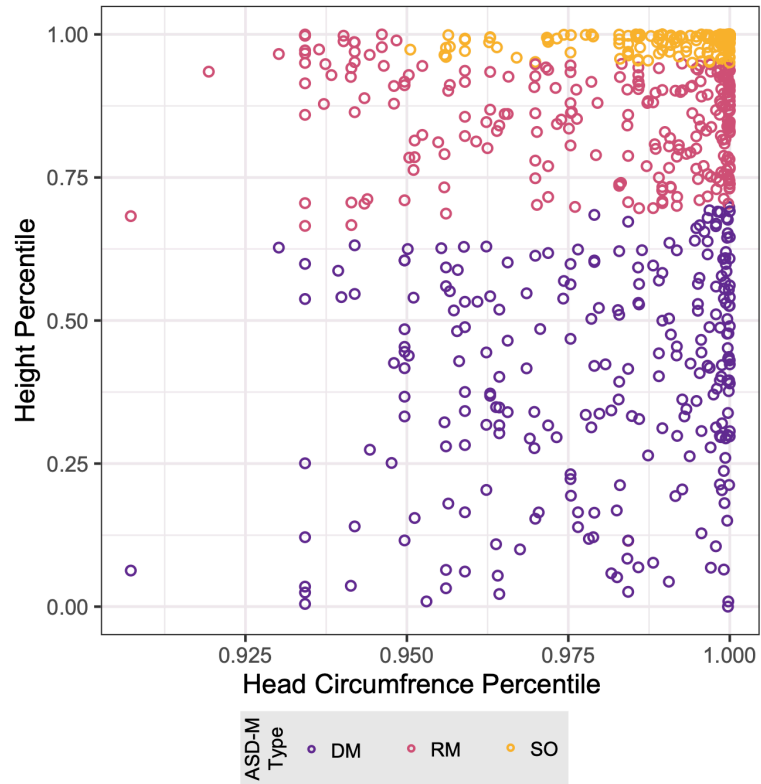
Supplementary Table 2. Loss-of-function *de novo* variants from ASD-DM and ASD-M probands.

Supplementary Table 3. Enriched gene ontologies from network analysis of ASD-DM candidate genes v a human background from DAVID.

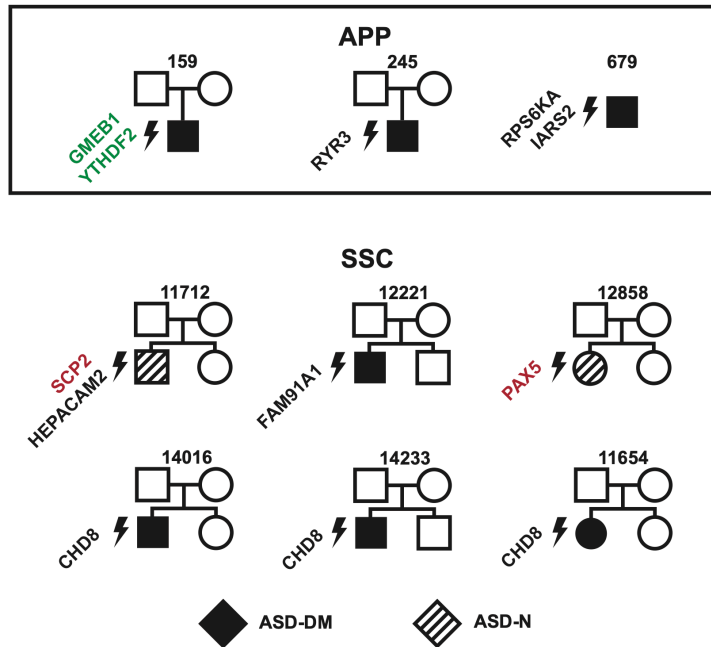
Supplementary Table 4. Network analysis seed ASD-DM candidate genes and top 10 interactors.

Supplementary Table 5. Enriched gene ontologies from network analysis of ASD-DM candidate genes and top 10 interactors.

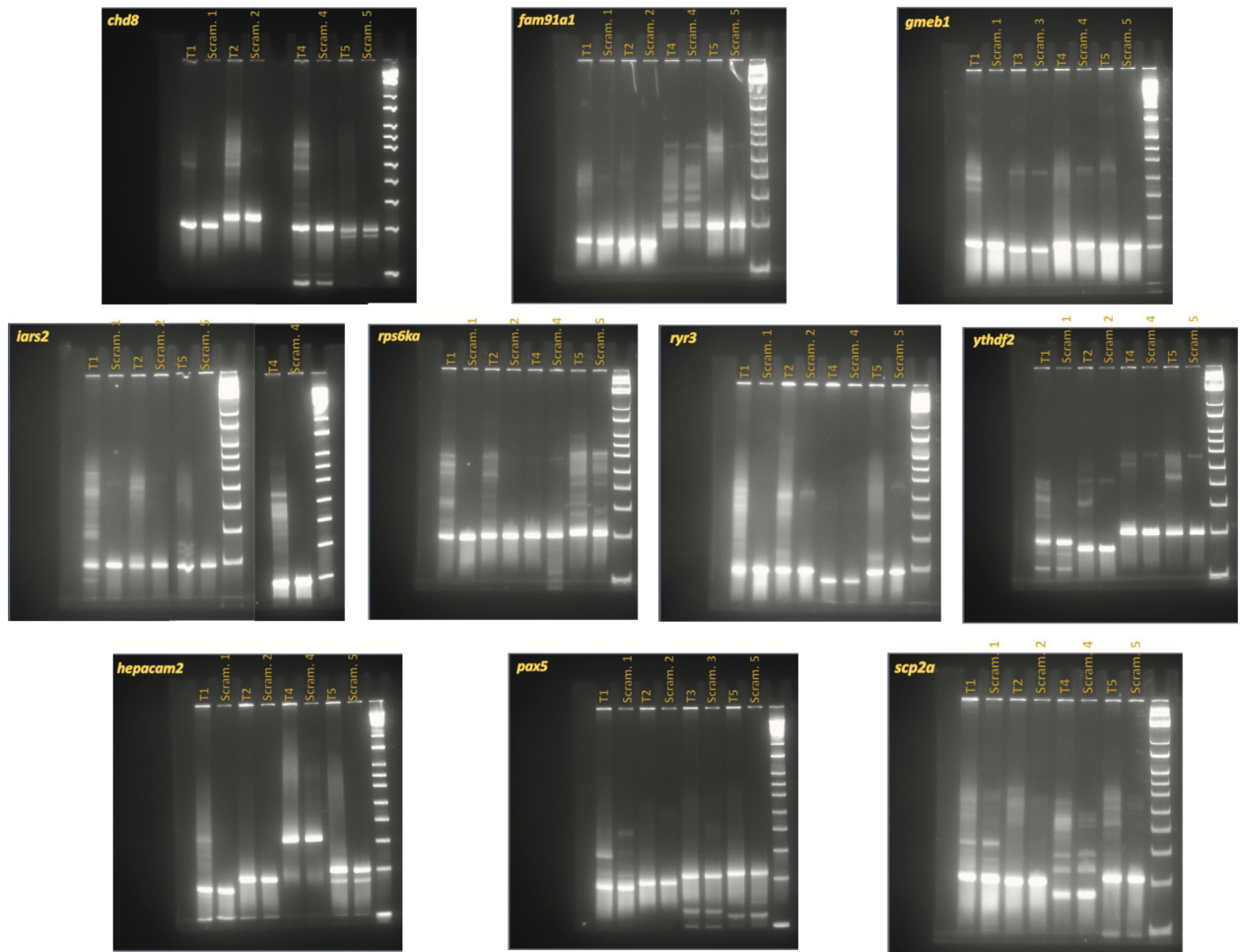
Supplementary Table 6. CRISPR zebrafish knockout gRNA and primer sequences.



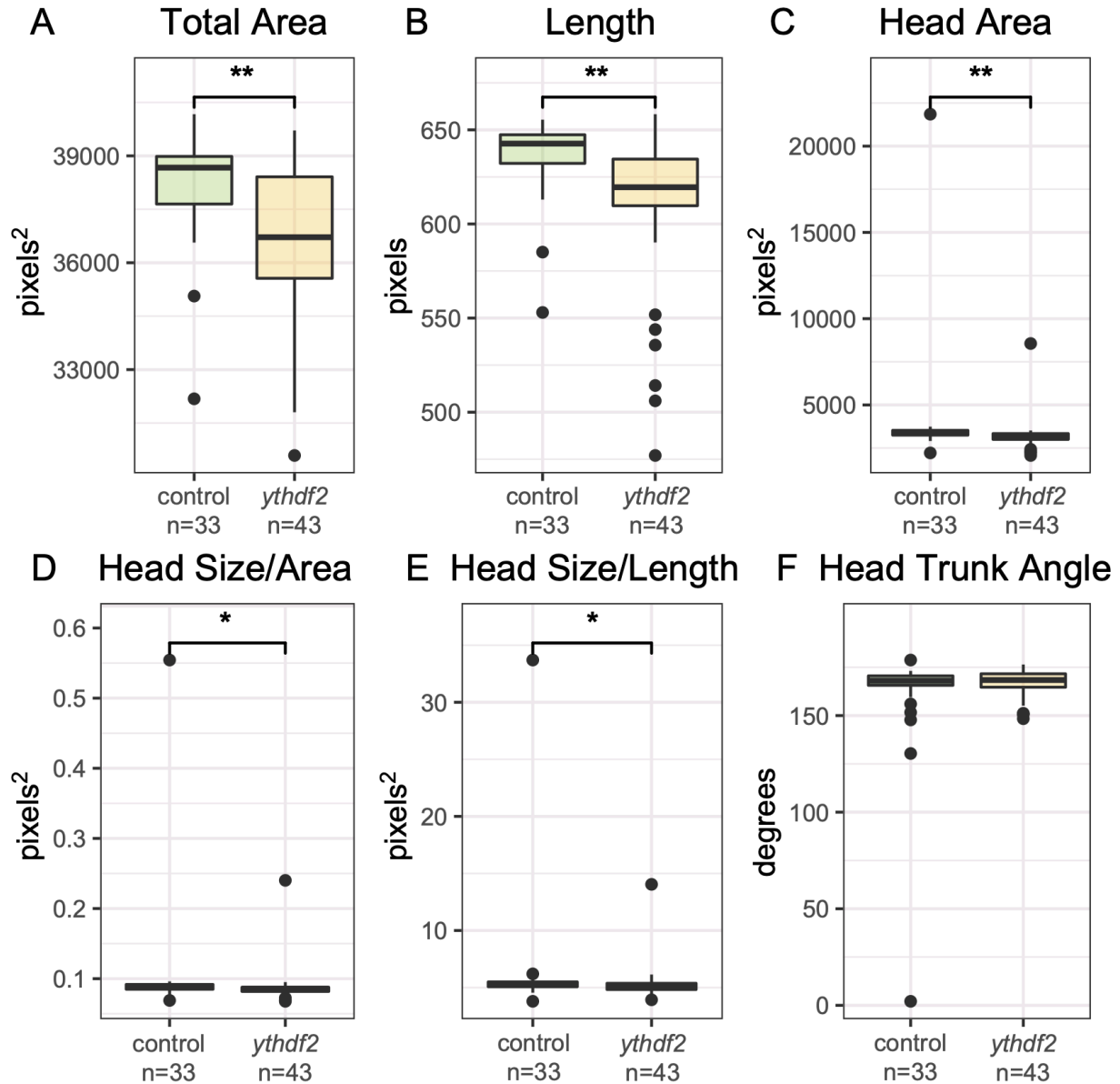
Supplementary Figure 1. Head circumference v. height percentile of ASD-M SSC probands.



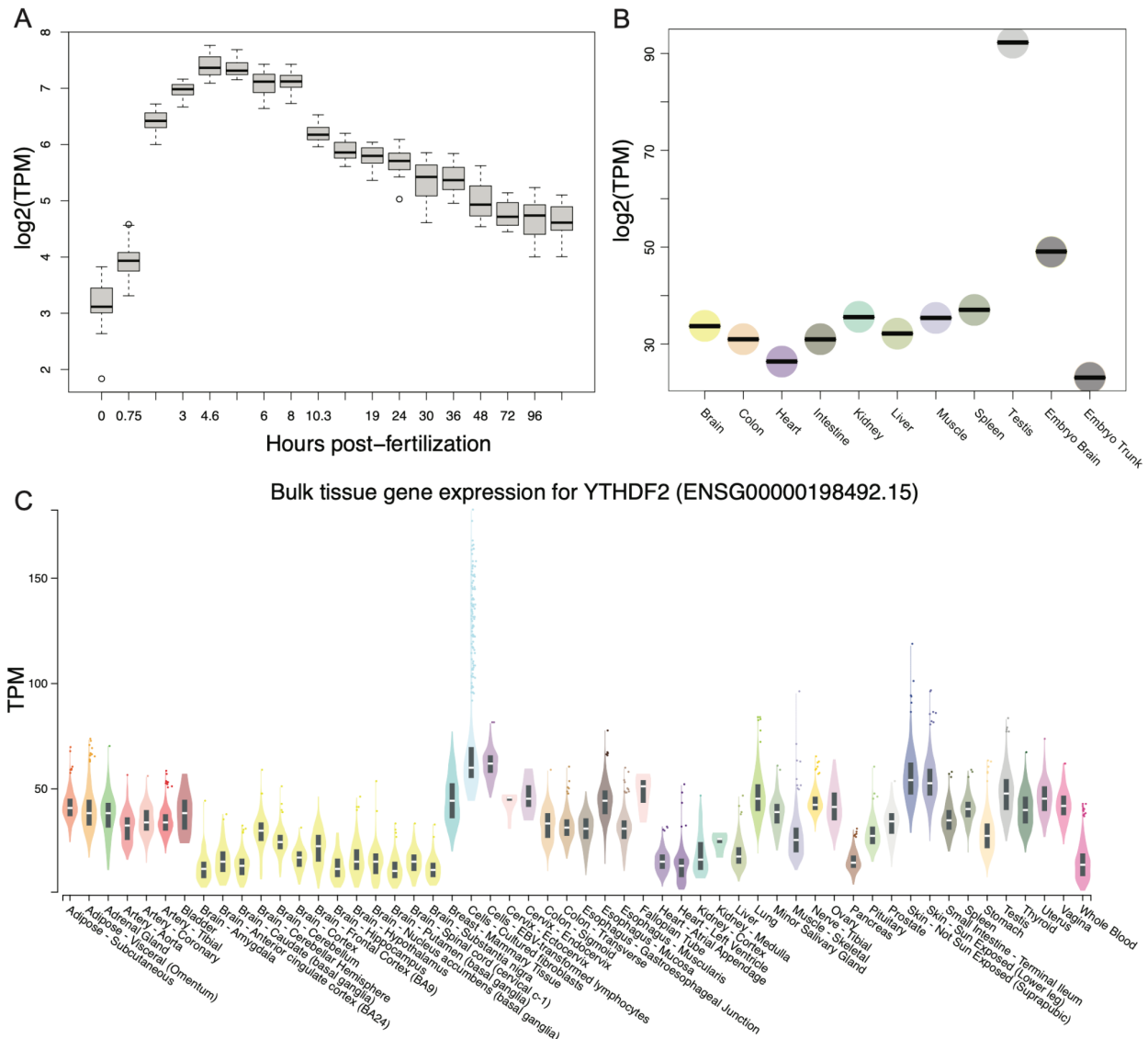
Supplementary Figure 2. ASD-DM and ASD-M families with *de novo* variants from the Autism Phenome Project and the Simons Simplex Cohort with impacted genes that were screened using zebrafish in this study. Green font signifies a duplication and red font signifies a deletion.



Supplementary Figure 3. Polyacrylamide gels showing the efficiency of each of the four CRISPR gRNAs chosen for the 10 genes tested in zebrafish.



Supplementary Figure 4. Lateral VAST measurements of *ythdf2* knockout embryos at 3dpf. Measurements of total area (A), length (B), and head area (C) were significantly reduced (Wilcoxon T-test p-value < 0.00041), with a significantly reduced head size maintained after normalization by area (D) (Wilcoxon T-test p-value = 0.032) and length (E) (Wilcoxon T-test p-value = 0.044). No significant change noted in head trunk angle (F) (Wilcoxon T-test p-value = 0.56). These results are consistent with overall smaller embryos and microcephaly, but not developmental delay.



Supplementary Figure 5. Expression of *YTHDF2* in zebrafish and human. A. Expression of *ythdf2* showing increased transcript per million (TPM) over early developmental time, peaking at ~5 hpf (White, 2007). B. Bulk tissue expression of *ythdf2* in zebrafish showing broad expression, highest in adult testis and embryo brain (Yang, 2020). C. Bulk tissue gene expression of *YTHDF2* from the Genotype-Tissue Expression project GTEx showing high broad expression in human (GTEx) (Broad Institute, 2021).

REFERENCES

1. White, R.J., Collins, J.E., Sealy, I.M., Wali, N., Dooley, C.M., Digby, Z., Stemple, D.L., Murphy, D.N., Hourlier, T., Füllgrabe, A., et al. A high-resolution mRNA expression time course of embryonic development in zebrafish.
2. Yang, H., Luan, Y., Liu, T., Lee, H.J., Fang, L., Wang, Y., Wang, X., Zhang, B., Jin, Q., Ang, K.C., et al. (2020). A map of cis-regulatory elements and 3D genome structures in zebrafish. *Nature* 588, 337–343.
3. Broad Institute (2021). The Genotype-Tissue Expression (GTEx) Project.