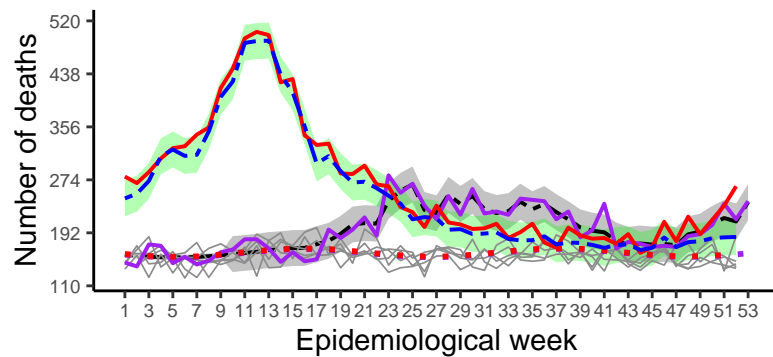
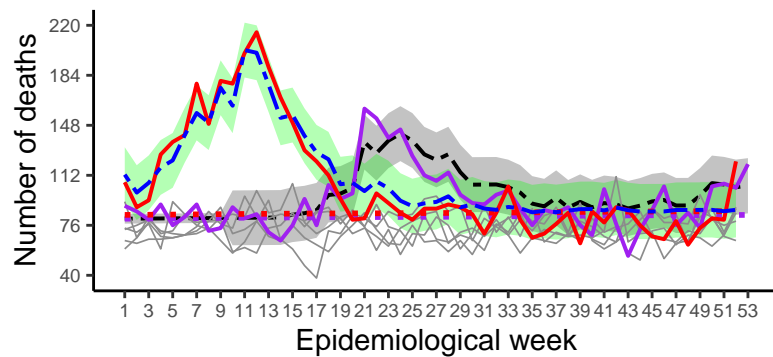


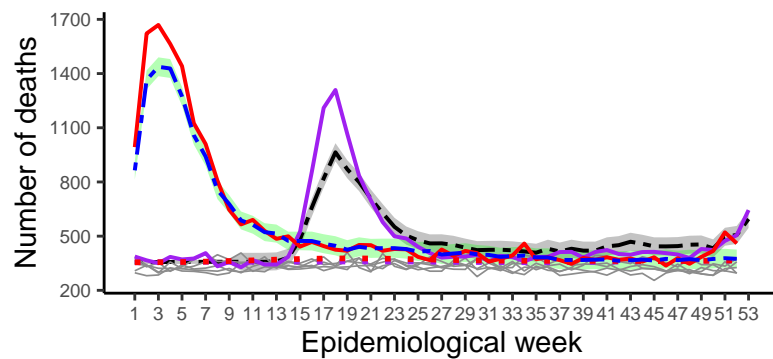
Rondônia (RO)



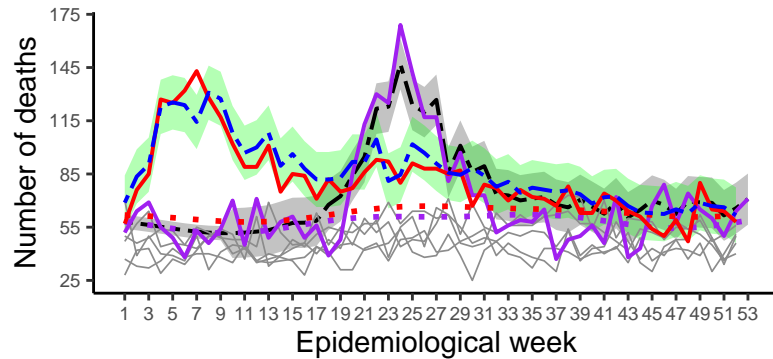
Acre (AC)



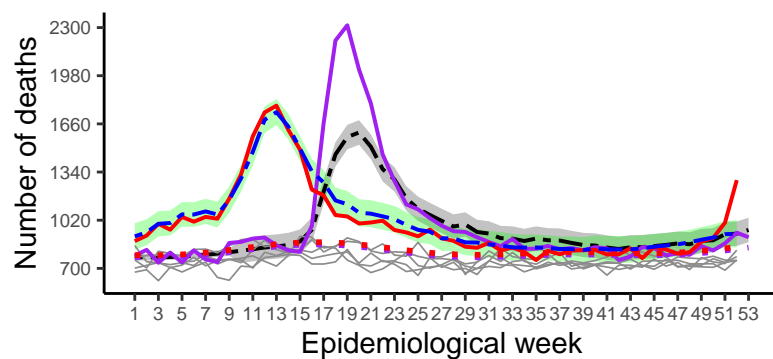
Amazonas (AM)



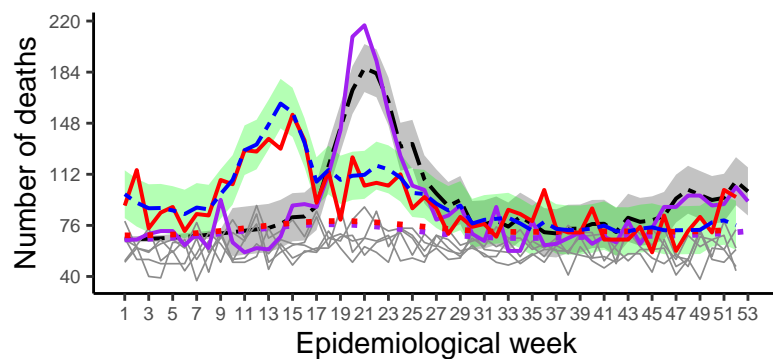
Roraima (RR)



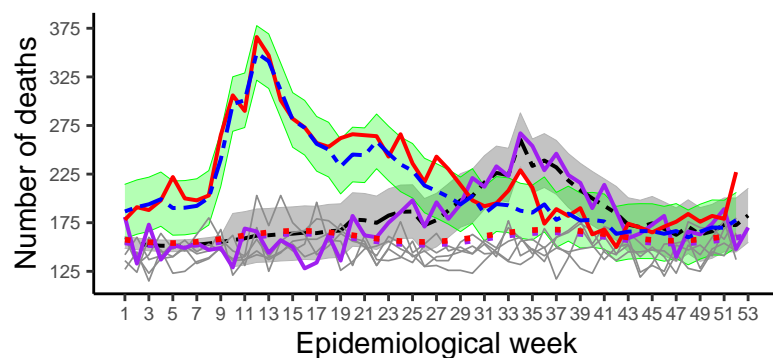
Pará (PA)



Amapá (AP)



Tocantins (TO)



— 2015–2019 observed ■ 2020 forecast — 2020 observed - - 2020 forecast+covid ■ 2020 95% IP
 ■ 2021 forecast — 2021 observed - - 2021 forecast+covid ■ 2021 95% IP