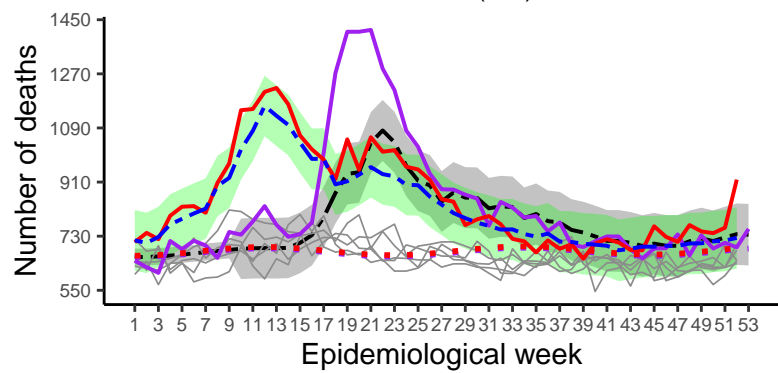
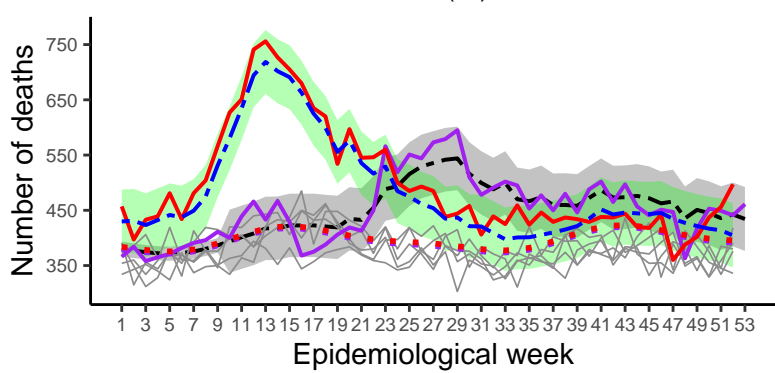


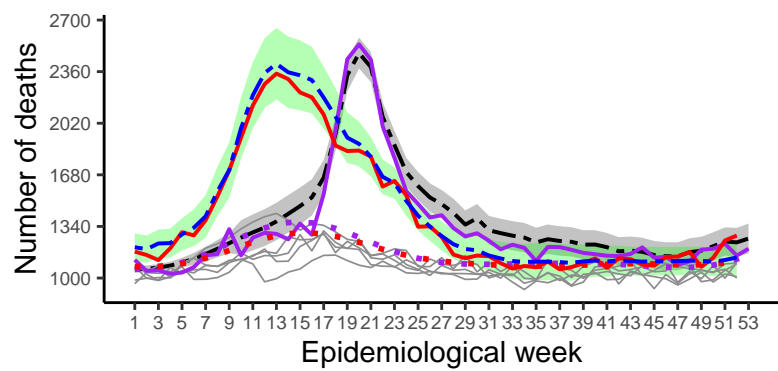
Maranhão (MA)



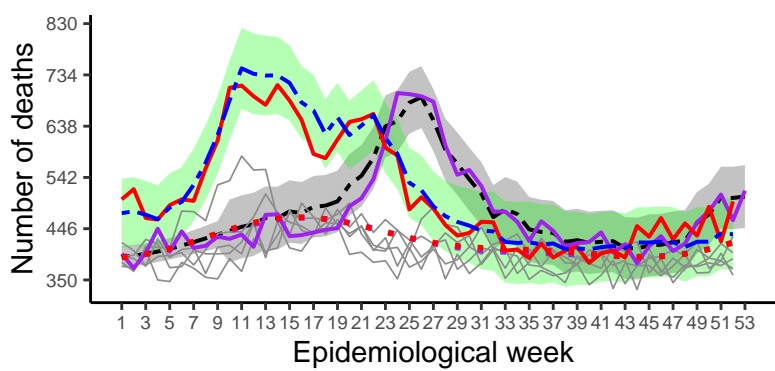
Piauí (PI)



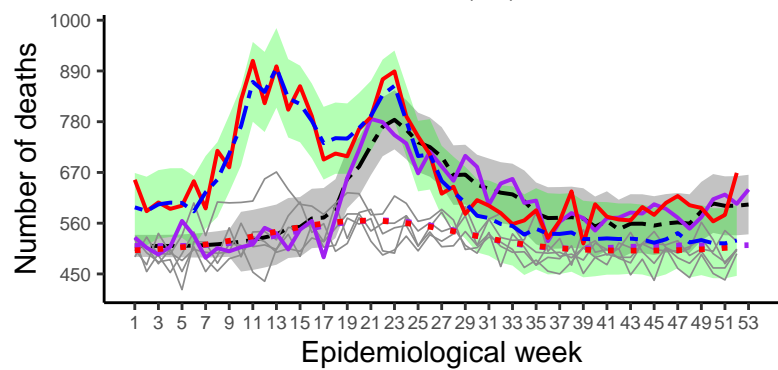
Ceará (CE)



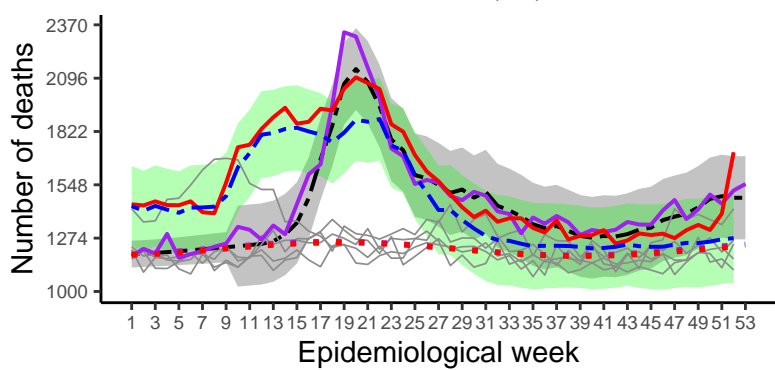
Rio Grande do Norte (RN)



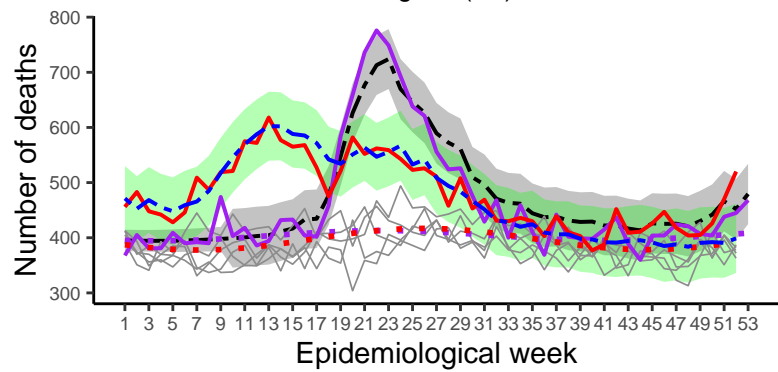
Paraíba (PB)



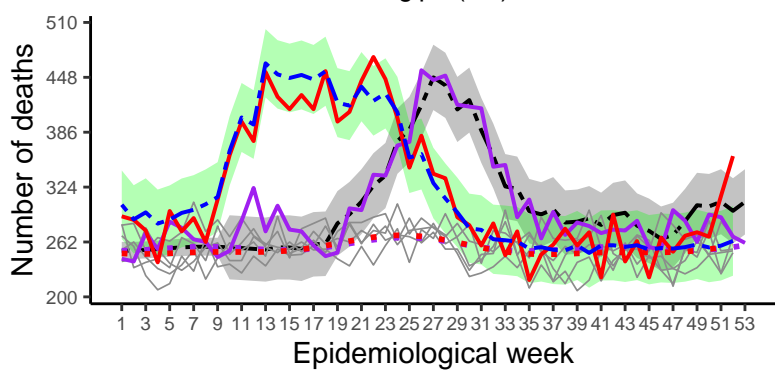
Pernambuco (PE)



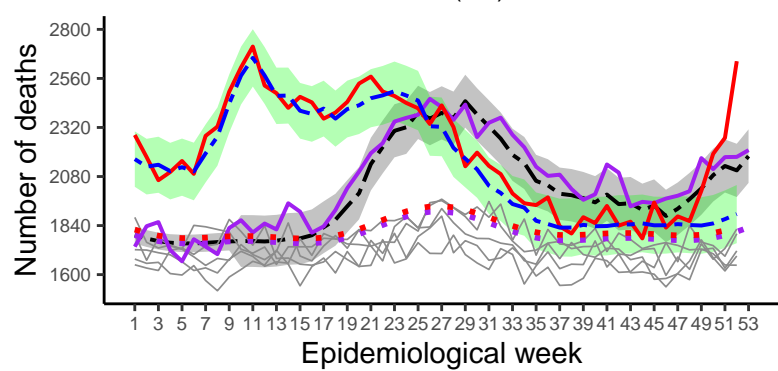
Alagoas (AL)



Sergipe (SE)



Bahia (BA)



— 2015–2019 observed   
 ■ 2020 forecast   
 — 2020 observed   
 - - 2020 forecast+covid   
  2020 95% IP  
■ 2021 forecast   
 — 2021 observed   
 - - 2021 forecast+covid   
 2021 95% IP