

1 **Potential policy interventions for slowing the spread of artemisinin-resistant**  
2 ***pfkelch* R561H mutations in Rwanda**

3 Robert J. Zupko<sup>1</sup>, Tran Dang Nguyen<sup>1</sup>, J. Claude S. Ngabonziza<sup>3,4</sup>, Michee Kabera<sup>2</sup>, Haojun Li<sup>1,5</sup>, Thu  
4 Nguyen-Anh Tran<sup>1</sup>, Kien Trung Tran<sup>1</sup>, Aline Uwimana<sup>2</sup>, Maciej F. Boni<sup>1,6</sup>

5

6 <sup>1</sup>Center for Infectious Disease Dynamics, Department of Biology, Pennsylvania State University,  
7 University Park, PA, USA

8 <sup>2</sup>Malaria and Other Parasitic Diseases Division, Rwanda Biomedical Centre (RBC), Kigali, Rwanda

9 <sup>3</sup>Research, Innovation and Data Science Division, Rwanda Biomedical Center (RBC), Kigali, Rwanda

10 <sup>4</sup>Department of Clinical Biology, University of Rwanda, Kigali, Rwanda

11 <sup>5</sup>Department of Computer Science, Columbia University, New York, NY, USA

12 <sup>6</sup> Centre for Tropical Medicine and Global Health, Nuffield Department of Medicine, University of  
13 Oxford, Oxford, UK

14

15 Keywords: malaria, drug resistance, kelch13, artemisinin

16

17

18 **Abstract**

19 Artemisinin combination therapies (ACTs) are highly effective at treating uncomplicated *Plasmodium*  
20 *falciparum* malaria. However, the emergence of a novel *pfkelch13* R561H mutation in Rwanda, with  
21 associated delayed parasite clearance, suggests that drug policy interventions are needed to delay the  
22 fixation and slow the spread of this mutation. Using a spatial, stochastic, individual-based model  
23 calibrated and validated for the Rwanda's malaria epidemiology, we evaluate seventeen strategies aimed  
24 at minimizing treatment failures and delaying the spread of R561H. The primary measures evaluated are  
25 projected treatment failures and R561H allele frequency over three, five, and ten years. Lengthening  
26 courses of treatment, deploying multiple first-line therapies, and custom rotation strategies all provide a  
27 benefit when compared to the status quo. The best intervention options, five years into the future, result in  
28 slower spread of R561H (0.16 allele frequency difference) and absolute treatment failure counts that are  
29 44% lower than projected under the status quo.

30

## 31 Introduction

32 The introduction of artemisinin combination therapies (ACTs) has been instrumental in reducing the  
33 burden of *Plasmodium falciparum* malaria; however, the continued evolution of drug resistance by  
34 malaria parasites has the potential to undermine these advancements. Since the first appearance of  
35 artemisinin resistance in Cambodia in the 2000s [1,2], the spread of molecular markers associated with  
36 artemisinin resistance has largely been concentrated in Southeast Asia [3,4]. However, the *de novo*  
37 appearance of confirmed markers for artemisinin resistance in Rwanda [5] and Uganda [6,7] signals the  
38 need for interventions to be considered in the African context.

39 The ACT artemether-lumefantrine (AL) was adopted by Rwanda as the first-line therapy for  
40 uncomplicated falciparum malaria in 2006 as part of a comprehensive national strategic plan for malaria  
41 control [8]. Since adoption of AL, the *pfkelch13* R561H mutation has emerged and been validated as a  
42 marker for partial artemisinin resistance in samples collected as part of clinical drug efficacy studies  
43 between 2012 - 2015 [3]. 561H is associated with a delayed clearance half-life of 7.2 hours (IQR: 6.1 –  
44 7.7 hours), similar to that of the 580Y mutation that emerged in Cambodia, and is associated with delayed  
45 clearance of the parasite [7,9]. Following the original identification of 561H in Gasabo, Rwanda [6],  
46 recent studies have found 561H in additional districts, with recent allele frequency measurements ranging  
47 from 0.045 to 0.219 [7,10–12]. These findings indicate that drug policy interventions are now needed to  
48 delay the fixation of 561H within the local *P. falciparum* population, and to reduce the impact of  
49 treatment failures due to artemisinin resistant parasites.

50 As of November 2022, WHO recommends six ACTs for the treatment of uncomplicated *P.*  
51 *falciparum* malaria: AL, artesunate-amodiaquine (ASAQ), artesunate-mefloquine (ASMQ),  
52 dihydroartemisinin-piperaquine (DHA-PPQ), artesunate/sulfadoxine–pyrimethamine (AS+SP), and  
53 artesunate-pyronaridine (AS-Pyr) [13]. Within sub-Saharan Africa (SSA) the predominant therapies  
54 deployed are AL and ASAQ, with AS+SP sometimes used for seasonal malaria chemoprophylaxis [14].  
55 While ASMQ and DHA-PPQ are recommended by WHO, they see limited use in SSA with AL and  
56 ASAQ being preferred [15]. As such, SSA faces a constrained drug landscape that requires national drug  
57 policy interventions be balanced between delaying drug resistance evolution by the parasite – leading to  
58 increased drug failures over the long term – and ensuring that therapies currently given are highly  
59 efficacious.

60 Studies detecting the mutant 561H allele indicate both increasing allele frequency and geographic  
61 spread; however, there may still be a window of opportunity to delay the fixation of 561H in Rwanda and  
62 avert high numbers of treatment failures. Accordingly, we examined a range of possible drug policy  
63 interventions, the majority of which utilize existing therapies, and their ability to slow down 561H  
64 evolution and reduce long-term treatment failures. These include the replacement of the existing first-line  
65 therapy, introduction of multiple first-line therapies (MFT), and lengthening the dosing schedule for AL  
66 from a 3-day course of treatment to up to five days of treatment with AL in accordance with previous  
67 clinical trials [16–18]. Additionally, a more logistically complicated strategy of drug rotation, along with  
68 an early exploration of the possible impact of triple artemisinin combination therapies (TACTs) are  
69 included.

70

## 71 Results

72 To provide a common point of comparison for policy interventions a baseline (or status quo) scenario was  
73 run ( $n = 100$  replicates) in which no interventions are implemented. Our spatially calibrated model – in

74 good agreement with the 2017 Malaria Atlas Project projections for Rwanda's malaria prevalence (i.e.,  
75 the *P. falciparum* prevalence in ages 2 to 10 [ $PfPR_{2-10}$ ]) and 561H allele frequency in Rwanda during  
76 2014-2019 (Fig. 1; Supplemental Material 2, Table S2) – forecasts that the 561H allele currently has a  
77 national frequency of 0.24 (IQR: 0.16 – 0.34) and will reach a national frequency of 0.95 (IQR: 0.91 –  
78 0.97) by 2033, nearly fixed as the dominant allele if current status quo conditions continue.

79 The increase in 561H allele frequency is projected to be associated with an increase in treatment  
80 failures. Based on a previously calibrated AL efficacy on commonly circulating genotypes in East and  
81 Central Africa [19], our model estimates that in 2023, presuming no interventions, 9.37% (IQR: 8.25 –  
82 10.61) of treated *P. falciparum* malaria cases will fail treatment with AL, or about 185,000 individuals for  
83 the calendar year (median monthly average of 15,000 [IQR: 13,000 – 17,500]). This monthly average is  
84 forecast to increase to 48,000 (IQR: 44,500 – 50,000) per month by 2033. Under the current status quo  
85 conditions, the 10% treatment failure threshold recommended by the WHO for a change in first-line  
86 therapies is likely to be met or exceeded by 2025.

87 To evaluate the impact of potential drug policy interventions, we examined 17 national-scale drug-  
88 resistance response strategies (Table 1), with a presumed implementation date of January 1, 2023, with  
89 the objectives of *i*) reducing the near- and long-term numbers of treatment failures, and *ii*) minimizing the  
90 increase in 561H allele frequency. The interventions can broadly be placed into four categories: (1) a  
91 change in first-line recommendation to a readily available and deployable therapy, (2) a change in  
92 strategy to deployment of MFT, (3) a change to a more intensive management approach, where multiple  
93 approaches are used sequentially with different goals at different times (e.g. lowering prevalence,  
94 delaying resistance), and (4) a switch to high-efficacy triple ACTs, assuming TACTs are approved and  
95 immediately available for emergency use.

96 Among alternate first-line therapies, extending the course of AL from three to four or five days is the  
97 most immediately available option due to stocks of AL already being present and available. Continued  
98 use of a 3-day AL course for five years is projected to lead to a median 561H allele frequency of 0.67  
99 (IQR: 0.53 - 0.76), whereas 4-day AL results in a 561H allele frequency of 0.63 (IQR: 0.53 - 0.70,  $p =$   
100  $0.0571$  ; Wilcoxon Rank-Sum) and 5-day AL results in a 561H allele frequency of 0.59 (IQR: 0.48 - 0.68,  
101  $p = 0.002$ ) (Fig. 2). After five years, the national average monthly treatment failures are expected to be  
102 27,000 (IQR: 23,000 – 30,000). These figures drop to 20,000 (IQR: 18,000 – 22,500,  $p < 0.0001$ ) under 4-  
103 day AL and 16,000 (IQR: 14,000 – 18,000,  $p < 0.0001$ ) under 5-day AL. Treatment failure numbers are  
104 substantially improved under a longer course of AL because of the combined effect of lower 561H  
105 frequency and higher treatment efficacy of the longer course.

106 Replacing AL with an alternative first-line therapy such as ASAQ or DHA-PPQ is the next easiest  
107 intervention to undertake. A switch to ASAQ gives results similar to 4-day or 5-day course of AL with a  
108 five-year 561H allele frequency of 0.60 (IQR: 0.46 - 0.67,  $p = 0.0029$  compared to 3-day AL) and an  
109 average of 19,000 (IQR: 17,000 – 20,000,  $p < 0.0001$ ) treatment failures per month within five years of  
110 deployment. However, a switch to DHA-PPQ results in an acceleration of the fixation of 561H with the  
111 allele frequency reaching 0.82 (IQR: 0.73 - 0.87,  $p < 0.0001$ ) within five years, and fixation within ten  
112 years. The projected number of treatment failures is also high with a monthly average of 77,500 (IQR:  
113 69,500 – 82,000,  $p < 0.0001$ ) within five years, and 106,000 (IQR: 105,000 – 106,000,  $p < 0.0001$ ) within  
114 ten years. The fixation of the 561H allele when switching to DHA-PPQ as the first-line therapy is due to  
115 the existing presence of artemisinin resistance coupled with the rapid projected evolution of piperazine  
116 resistance leading to partner-drug failure, resulting in an evolutionary environment favorable for rapid  
117 selection for artemisinin resistance.

118 In contrast to extending the duration of AL treatment or replacing the first-line therapy, the  
119 introduction of MFT may pose some logistical challenges, which could be offset by the effectiveness of  
120 MFT in hindering the spread of drug-resistant genotypes (due to the more complex evolutionary  
121 environment that parasites face under MFT [20,21]). Nine combinations of AL, ASAQ, and DHA-PPQ  
122 with distribution ratios of 25/75, 50/50, and 75/25 were considered (Table 1). Barring MFTs with a high  
123 (i.e., 75%) proportion of DHA-PPQ treatments, MFTs outperformed the status quo with regards to  
124 treatment failures and 561H allele frequency (Figures 3 and 4, Supplemental Material 2, Table S1).  
125 However, only an MFT consisting of 75% ASAQ and 25% DHA-PPQ is projected to be under the 10%  
126 treatment failure threshold after five years at 9.30% (IQR: 8.28% - 10.30%,  $p < 0.0001$  compared to 3-  
127 day AL). Within ten years, all MFT combinations are projected to exceed 10% treatment failure, although  
128 combinations of 50% AL and 50% ASAQ or 25% AL and 75% ASAQ are comparably acceptable  
129 outcomes with 14.62% (IQR: 13.74% - 15.16%,  $p < 0.0001$ ) and 14.18% (IQR: 13.72% - 14.60%,  $p <$   
130  $0.0001$ ) treatment failure, respectively. The higher percentage of treatment failures in relation to MFTs  
131 incorporating DHA-PPQ is once again due to the loss of DHA-PPQ efficacy as piperazine resistance  
132 evolution accelerates. After 5 years, the optimal MFT policy is projected to generate 16,000 (IQR: 14,000  
133 - 17,000,  $p < 0.0001$ ) monthly treatment failures.

134 While DHA-PPQ deployment is associated with a higher frequency of 561H over the ten-year time  
135 horizon – and an associated higher level of treatment failures – over a shorter three-year time horizon  
136 DHA-PPQ is projected to be more efficacious, suggesting that a more complex rotation strategy is worth  
137 considering. To evaluate this, we introduced the use of DHA-PPQ as the first-line therapy for three years,  
138 followed by a switch to an MFT utilizing either 50% AL and 50% ASAQ or 50% 5-day AL and 50%  
139 ASAQ. As expected, this strategy performed better than the status quo in controlling the 561H allele  
140 frequency, although the percentages of treatment failures were comparable after three years. Only the  
141 strategy involving a switch to an MFT with 50% receiving a 5-day course of AL and 50% receiving  
142 ASAQ remained under the 10% threshold at the end of five years (8.95% [IQR: 8.07% - 9.50%,  $p =$   
143  $0.0003$  compared to 3-day AL]; Supplemental Material 2, Table S1) with projected monthly treatment  
144 failures of 16,000 (IQR: 14,000 - 16,500,  $p < 0.0001$ ). However, the logistical complications in deploying  
145 drug rotation coupled with MFT suggest that compliance and operations would have a large influence on  
146 the success of this approach.

147 While the previous fifteen national-scale response strategies make use of currently available  
148 therapies, the results of past and ongoing clinical trials of the TACTs artemether-  
149 lumefantrine and amodiaquine (ALAQ), and artesunate-mefloquine-piperazine (ASMQ-PPQ) [22],  
150 suggest that they are likely to be highly efficacious and worth considering as an emergency intervention  
151 in response to rising treatment failure rates. For these two scenarios we presume that ALAQ or ASMQ are  
152 deployed as first-line therapy, replacing AL. As expected based upon previous modeling studies [23,24],  
153 in our analysis TACTs outperformed all other drug policy interventions with ALAQ resulting in average  
154 monthly treatment failures of 2,800 (IQR: 2,500 - 3,000,  $p < 0.0001$  compared to 3-day AL) and a 561H  
155 allele frequency of 0.33 (IQR: 0.24 - 0.44,  $p < 0.0001$ ) after five years, while ASMQ-PPQ resulted in  
156 1,800 (IQR: 1,000 - 2,500,  $p < 0.0001$ ) monthly treatment failures and a 561H allele frequency of 0.33  
157 (IQR: 0.22 - 0.43,  $p < 0.0001$ ). However, the usage of ASMQ-PPQ comes an increased risk of DHA-PPQ  
158 failure given projected treatment failures of 16.48% (IQR: 11.34% - 19.38%,  $p < 0.0001$ ) within ten years  
159 of deployment. In contrast, treatment failures are likely to still be low if ALAQ is deployed reaching only  
160 1.82% (IQR: 1.65% - 2.02%,  $p < 0.0001$ ) within ten years of deployment.

161 These modeled scenarios assume that all courses of treatments will be completed in full; however, in  
162 practice 100% compliance is unlikely and adherence rates may be complicated by under-dosing, over-

163 dosing, and formulation design (i.e., fixed dose combination vs. co-packaged blister packs), resulting in  
164 real-world compliance rates between 65% and 90% for a three-day course of treatment [25,26]. To  
165 evaluate the possible impacts that compliance with treatment regimens would have, additional scenarios  
166 were evaluated in which ASAQ, DHA-PPQ, and 3-, 4-, or 5-day courses of AL were administered using  
167 low (25% to 70%), moderate (50% to 80%), and high (70% to 90%) compliance rates for complete  
168 courses (Supplemental Material 2, Table S4). As expected, failure to comply with the prescribed course of  
169 treatment results in an increase in treatment failures; however, extended courses of AL (four or five days)  
170 along with ASAQ still outperform perfect compliance with a 3-day course of AL (Supplemental Material  
171 2, Table S3). No differences were seen in policy prioritization when evaluating scenarios with imperfect  
172 compliance.

173

## 174 Discussion

175 The projected national frequency of the 561H allele in Rwanda under a continuation of status quo  
176 treatment with a 3-day course of artemether-lumefantrine indicates that treatment failures will increase  
177 over the next ten years and drug policy interventions are required to mitigate this risk as much as possible.  
178 The current spread of the 561H allele to other districts from its initial apparent emergence in Gasabo,  
179 together with confirmation of 561H [6,7,10,11] at frequencies similar to those projected in our simulation,  
180 suggests that the 561H allele is likely present throughout Rwanda.

181 Our findings suggest that over a five-year time horizon extending the use of AL from three to five  
182 days would hold treatment failures under 10% (projected median 9.11% [IQR: 7.79% - 10.00%]), and  
183 switching to an MFT strategy is likewise worth considering, with the optimal MFT approach – a 75%  
184 ASAQ and 25% DHA-PPQ deployment – projected to lower treat failures to a median 9.30% [IQR:  
185 8.28% - 10.03%] after five years. Extending the course of treatment with AL has minimal logistical  
186 considerations beyond ensuring sufficient quality of doses being distributed and appears to be beneficial  
187 compared to the status quo scenario. While there are concerns regarding the cardiotoxicity of antimalarial  
188 drugs [27,28], the incidence of adverse cardiac events recorded during clinical trials has been low [29].  
189 Switching to one of several MFT options where future treatment failure rates can be kept close to 10%  
190 will ensure there are no concerns with extended artemisinin dosing, and the success of these MFT  
191 deployments will depend on operational capability around the supply and distribution of ACTs. Based on  
192 the structure of the distribution network for antimalarials in Rwanda and the current availability of  
193 different ACTs, an MFT deployment is more likely to be feasible than a custom rotation approach.

194 These findings must be contextualized against the limitations that are inherent in modeling studies.  
195 First, due to the introduction of AL in 2006, other drug-resistance mutations – such as those associated  
196 with lumefantrine resistance – are likely to be present in Rwanda. The enabling of mutations in model  
197 year 2014 represents a ‘model fitting’ compromise made necessary due to the stochastic nature of the rare  
198 mutation emergence process [19,30] from 2006 to 2014 that has not been systematically captured in any  
199 known data collections. Higher (or lower) frequencies of partner-drug sensitivity would affect the  
200 selection for the 561H mutant. Furthermore, while the model calibration may suggest that 561H initially  
201 appeared in Gasabo district around 2004, the design of the simulation renders it incapable of fitting the  
202 highly stochastic process that would have driven the initial appearance and spread of 561H.

203 Second, pyronaridine-artesunate deployment was not considered in our simulations as pyronaridine-  
204 resistant falciparum phenotypes have not yet been described. Assuming similar rates of emergence and  
205 similar drops in ACT efficacy due to future pyronaridine resistance, pyronaridine-artesunate would likely  
206 make a positive contribution as an addition to any of the MFT strategies shown in Table 1. Finally, due to



207 our model calibration being centered on 2017 estimates of falciparum prevalence, our current simulation  
208 set-up does not capture the gains made in malaria control in Rwanda during 2017-2021. Annual  
209 falciparum cases have been reported to be around one million for the 2021-2022 fiscal period (July to  
210 June) for an annual incidence of 76/1000. If these gains hold for the remainder of the decade, the  
211 absolute number of monthly treatment failure counts reported in our analysis could be lower by a factor of  
212 two or three. The relative benefits of the different strategies should stay the same, however this would  
213 need to be confirmed with the latest case counts and drug coverage patterns.

214 Crucially, current National Malaria Control Program activities to expand indoor residual spraying  
215 activities (from 2-8 districts last decade to 12-15 districts this decade) and to introduce synergistic  
216 insecticide impregnated nets (piloted in 2019-2020 with distribution planned for 2023 [31]) are likely to  
217 reduce biting rates and case numbers in the coming years. A recent pilot study in rural part of Gasabo  
218 district with high malaria risk showed that larviciding activity had a moderate effect on reducing  
219 incidence; NMCP also expects to expand larviciding as part of a new set of malaria control activities.  
220 These interventions may prove beneficial in the fight against drug resistance as they may eliminate  
221 pockets of transmission, including drug-resistant alleles, and are likely to slow the overall geographic  
222 spread of all genotypes.

223 Without additional interventions targeting drug resistance and general malaria transmission, the  
224 results of this modeling study underscore what has already been demonstrated: drug resistance can spread  
225 rapidly once it is established, and this could leave National Malaria Control Programs with limited  
226 forewarning to deploy responses. The identification of 561H in Uganda [32] suggests that the spread of  
227 the 561H mutant is currently in progress, and this spread is likely to co-occur with that of other markers  
228 for artemisinin resistance within sub-Saharan Africa [32–34].

229 It is important to highlight that for the majority of national drug-policy intervention scenarios  
230 considered here, treatment failures are projected to exceed 10% within five years and may reach as high  
231 as 40% if DHA-PPQ were to be deployed as the sole first-line therapy without rotation (Supplemental  
232 Material 2, Table S1). As such, emphasis should be placed upon the development of next generation  
233 therapies along with continued evaluation of therapies such as pyronaridine-artesunate, ASMQ, and  
234 extended courses of ACT. According to model projections, the most effective among these choices is  
235 adoption of TACTs following completion of clinical trials and regulatory approval which is projected to  
236 slow down the spread of 561H and greatly reduce treatment failures. Early introduction of TACTs, before  
237 crossing the WHO first-line therapy treatment failure threshold of 10%, would need to be accompanied by  
238 appropriate public health communication and an assessment of acceptability in affected communities  
239 [35]. Ultimately, the results of the use of TACTs within the context of this study are promising and  
240 suggests that if approved, they could prove to be highly effective as a bridge to next generation malaria  
241 therapies.

242

## 243 **Methods**

244 A previously validated spatial, stochastic, individually-based model was used as the basis for the study  
245 [36,37], and a new model calibration was conducted to match the malaria prevalence of the 30  
246 administrative districts of Rwanda. The Malaria Atlas Project mean  $PfPR_{2-10}$  projections for 2017 [38]  
247 were used as the basis to calibrate local transmission parameters on a 5-by-5 km (25 sq.km) scale in  
248 Rwanda (Supplemental Material 1, §1.1). The seasonal variation in malaria transmission was coupled to  
249 seasonal rainfall (Supplemental Material 1, §1.2), consistent with the general coupling of seasonal  
250 transmission and increased rainfall. Treatment seeking and treatment coverage data were obtained from

251 the 2019-20 Demographic and Health Survey [39], with treatment coverage ranging from 53.3% to 71.8%  
252 across districts (Supplemental Material 1, §1.3). Under the baseline model – or status quo –conditions, all  
253 treated individuals in the model receive a 3-day course of AL, with full compliance with the course of  
254 treatment. No private market drugs are incorporated, consistent with survey results [39]. During model  
255 execution, individuals move around the simulated landscape in a manner consistent with previous travel  
256 studies for SSA [40,41], and carry any *P. falciparum* clones to these destinations. The carried clones may  
257 then enter into circulation within a new region if the traveling individual is bitten by a mosquito, which  
258 then proceeds to infect another individual.

259 With these prevalence and treatment calibrations, the model produces a symptomatic malaria  
260 incidence ranging from 9.7 per 1000 (Burera district) to 452.53 per 1000 (Gisagara district) annual cases.  
261 This sums to about 217 annual cases per 1000 on a national level, consistent with reporting that the  
262 incidence rate has been declining from a high of 403 per 1000 in 2016 [42] (Supplemental Material 1, §3,  
263 §4). Despite concerns that the global COVID-19 pandemic would impact malaria control measures, a  
264 mixed-methods study of three high-endemic districts (Gasabo, Kayonza, and Rwamagana) suggests that  
265 while the distribution of malaria testing shifted, the overall decline in uncomplicated malaria cases has  
266 continued through 2020 [43]. This indicates that the model calibration may be overestimating case  
267 numbers in 2020 and later.

268 After calibration of prevalence, incidence, and treatment coverage, the simulation’s genotype  
269 frequency and trajectory were matched to field observations of 561H allele frequencies. Seven data points  
270 on *pfkelch* 561H mutation are available at district-level: four close to the capital Kigali [6,7,10], two from  
271 the eastern district of Kayonza [6,7], and one from the southern district of Huye [11]. To calibrate to these  
272 values the simulation was seeded with a single mutation of 561H genotypes in Gasabo district (Kigali  
273 province) to generate a slowly growing exponential curve with district frequencies that are consistent with  
274 measured values (Fig. 1). This results in a mean national frequency ranging from 0.01 in 2014 to 0.12 in  
275 2020 (see Supplemental Material 1, Figure S6). In the event that the seeded 561H genotypes went extinct  
276 before 2014, the replicate was discarded from analysis.

277 Since the mutation rate for 561H is not known, these artificially introduced 561H genotypes are the  
278 only means by which 561H can be introduced into the simulation. The spatial spread of 561H is driven by  
279 human movement and migration within the simulation. To account for the ability of ACT partner-drug  
280 resistance to accelerate the fixation of artemisinin resistance [19], mutations affecting other alleles (e.g.,  
281 *pfprt*, *pfmdr1*, etc.) are enabled in the simulation on January 1, 2014 following the completion of model  
282 burn-in using a previously calibrated value [19]. This produces a slight model delay in *pfprt* and *pfmdr1*  
283 mutations that are associated with the use of lumefantrine given the adoption of AL by Rwanda in 2006,  
284 likely resulting in a slight model bias against lumefantrine resistance.

285 As a common point of comparison, a baseline scenario (also called “status quo”) was run ( $n = 100$   
286 replicates) in which the calibrated model was simulated for a ten-year window past the point of  
287 intervention (January 1, 2023, to January 1, 2033). Seventeen drug policy intervention scenarios ( $n = 100$   
288 replicates each) were evaluated within the simulation (see Table 1), and all interventions are implemented  
289 at the same time with no delay between the introduction and the change in therapies received by  
290 individuals. Four of the evaluated interventions were for a change in first-line therapy to a 4-day course of  
291 AL, 5-day course of AL, ASAQ, or DHA-PPQ. Nine of the interventions were 2-therapy MFT  
292 approaches with drug distribution proportions ranging from 25/75 to 50/50 to 75/25 (see Table 1). Two  
293 interventions considered short-term DHA-PPQ use first (for three years) followed by replacement of  
294 DHA-PPQ with one of two MFT strategies using AL and ASAQ (Table 1). Finally, two interventions  
295 considered replacement of AL with one of two triple therapies (ALAQ and ASMQ-PPQ) which are yet to



296 be approved [22,35]. Adherence to drug course regimen was evaluated to determine if patient compliance  
297 with three-to-five-day drug courses had major effects on strategy choice. The five-year endpoints are  
298 presented in the main text, with three- and ten-year endpoints referred to as needed; comprehensive  
299 results for all endpoints can be found in Supplemental Material 2, Tables S1 and S3.

300 Differences between groups of simulation results (i.e., comparing 100 simulations each from two  
301 scenarios) are tested with non-parametric Wilcoxon rank-sum tests and all p-values lower than  $10^{-4}$  are  
302 shown as  $10^{-4}$ .

303

## 304 **References**

305 1. Ariey F, Witkowski B, Amaratunga C, Beghain J, Langlois A-C, Khim N, et al. A molecular marker of  
306 artemisinin-resistant *Plasmodium falciparum* malaria. *Nature*. 2014;505:50–5.

307 2. Ashley EA, Dhorda M, Fairhurst RM, Amaratunga C, Lim P, Suon S, et al. Spread of Artemisinin  
308 Resistance in *Plasmodium falciparum* Malaria. *N Engl J Med*. Massachusetts Medical Society;  
309 2014;371:411–23.

310 3. World Health Organization. Report on antimalarial drug efficacy, resistance and response: 10 years of  
311 surveillance (2010 - 2019) [Internet]. Geneva: World Health Organization; 2020 p. 78. Available from:  
312 <https://apps.who.int/iris/bitstream/handle/10665/336692/9789240012813-eng.pdf>

313 4. World Health Organization. World Malaria Report 2021 [Internet]. Geneva, Switzerland: World Health  
314 Organization; 2021 [cited 2022 Jun 17]. Available from: [https://www.who.int/teams/global-malaria-](https://www.who.int/teams/global-malaria-programme/reports/world-malaria-report-2021)  
315 [programme/reports/world-malaria-report-2021](https://www.who.int/teams/global-malaria-programme/reports/world-malaria-report-2021)

316 5. Fidock DA, Rosenthal PJ. Artemisinin resistance in Africa: How urgent is the threat? *Med*.  
317 2021;2:1287–8.

318 6. Uwimana A, Legrand E, Stokes BH, Ndikumana J-LM, Warsame M, Umulisa N, et al. Emergence and  
319 clonal expansion of in vitro artemisinin-resistant *Plasmodium falciparum* kelch13 R561H mutant  
320 parasites in Rwanda. *Nature Medicine* [Internet]. 2020; Available from: [https://doi.org/10.1038/s41591-](https://doi.org/10.1038/s41591-020-1005-2)  
321 [020-1005-2](https://doi.org/10.1038/s41591-020-1005-2)

322 7. Uwimana A, Umulisa N, Venkatesan M, Szigel SS, Zhou Z, Munyaneza T, et al. Association of  
323 *Plasmodium falciparum* kelch13 R561H genotypes with delayed parasite clearance in Rwanda: an open-  
324 label, single-arm, multicentre, therapeutic efficacy study. *The Lancet Infectious Diseases*. 2021;21:1120–  
325 8.

326 8. Karema C, Aregawi MW, Rukundo A, Kabayiza A, Mulindahabi M, Fall IS, et al. Trends in malaria  
327 cases, hospital admissions and deaths following scale-up of anti-malarial interventions, 2000–2010,  
328 Rwanda. *Malaria Journal*. 2012;11:236.

329 9. Amaratunga C, Andriananjaka VH, Ashley E, Bethell D, Björkman A, Bonnington CA, et al.  
330 Association of mutations in the *Plasmodium falciparum* Kelch13 gene (Pf3D7\_1343700) with parasite  
331 clearance rates after artemisinin-based treatments—a WWARN individual patient data meta-analysis.  
332 *BMC Medicine*. 2019;17:1.

333 10. Straimer J, Gandhi P, Renner KC, Schmitt EK. High Prevalence of *Plasmodium falciparum* K13  
334 Mutations in Rwanda Is Associated With Slow Parasite Clearance After Treatment With Artemether-

- 335 Lumefantrine. *The Journal of Infectious Diseases* [Internet]. 2021 [cited 2021 Sep 7]; Available from:  
336 <https://doi.org/10.1093/infdis/jiab352>
- 337 11. Bergmann C, van Loon W, Habarugira F, Tacoli C, Jäger J, Savelsberg D, et al. Increase in Kelch 13  
338 Polymorphisms in *Plasmodium falciparum*, Southern Rwanda. *Emerging Infectious Disease journal*.  
339 2021;27:294.
- 340 12. Kirby R, Giesbrecht D, Karema C, Watson O, Lewis S, Munyaneza T, et al. Examining the early  
341 distribution of the artemisinin-resistant *Plasmodium falciparum* kelch13 R561H mutation in Rwanda.  
342 *bioRxiv*. 2022;2022.10.26.513523.
- 343 13. WHO Global Malaria Programme. WHO Guidelines for Malaria - 25 November 2022 [Internet].  
344 World Health Organization; 2022 Nov p. 425. Report No.: WHO/UCN/GMP/2022.01 Rev.3. Available  
345 from: <https://app.magicapp.org/#/guideline/6810>
- 346 14. World Health Organization. Seasonal Malaria Chemoprevention with Sulfadoxine-Pyrimethamine Plus  
347 Amodiaquine in Children: A Field Guide [Internet]. Geneva, Switzerland: World Health Organization;  
348 2013 [cited 2022 Jul 18]. Available from:  
349 [https://apps.who.int/iris/bitstream/handle/10665/85726/9789241504737\\_eng.pdf](https://apps.who.int/iris/bitstream/handle/10665/85726/9789241504737_eng.pdf)
- 350 15. Whegang Youdom S, Tahar R, Basco LK. Comparison of anti-malarial drug efficacy in the treatment  
351 of uncomplicated malaria in African children and adults using network meta-analysis. *Malaria Journal*.  
352 2017;16:311.
- 353 16. van Vugt M, Looareesuwan S, Wilairatana P, McGready R, Villegas L, Gathmann I, et al.  
354 Artemether-lumefantrine for the treatment of multidrug-resistant *falciparum* malaria. *Transactions of The*  
355 *Royal Society of Tropical Medicine and Hygiene*. 2000;94:545–8.
- 356 17. Tun KM, Jeeyapant A, Myint AH, Kyaw ZT, Dhorda M, Mukaka M, et al. Effectiveness and safety of  
357 3 and 5 day courses of artemether–lumefantrine for the treatment of uncomplicated *falciparum* malaria in  
358 an area of emerging artemisinin resistance in Myanmar. *Malaria Journal*. 2018;17:258.
- 359 18. Onyamboko Marie A., Hoglund Richard M., Lee Sue J., Kabedi Charlie, Kayembe Daddy, Badjanga  
360 Benjamin B., et al. A Randomized Controlled Trial of Three- versus Five-Day Artemether-Lumefantrine  
361 Regimens for Treatment of Uncomplicated *Plasmodium falciparum* Malaria in Pregnancy in Africa.  
362 *Antimicrobial Agents and Chemotherapy*. American Society for Microbiology; 2020;64:e01140-19.
- 363 19. Watson OJ, Gao B, Nguyen TD, Tran TN-A, Penny MA, Smith DL, et al. Pre-existing partner-drug  
364 resistance to artemisinin combination therapies facilitates the emergence and spread of artemisinin  
365 resistance: a consensus modelling study. *The Lancet Microbe* [Internet]. 2022; Available from:  
366 <https://www.sciencedirect.com/science/article/pii/S2666524722001550>
- 367 20. Boni MF, Smith DL, Laxminarayan R. Benefits of using multiple first-line therapies against malaria.  
368 *Proc Natl Acad Sci USA*. 2008;105:14216.
- 369 21. Boni MF, White NJ, Baird JK. The Community As the Patient in Malaria-Endemic Areas: Preempting  
370 Drug Resistance with Multiple First-Line Therapies. *PLOS Medicine*. Public Library of Science;  
371 2016;13:e1001984.
- 372 22. van der Pluijm RW, Tripura R, Hoglund RM, Pyae Phyo A, Lek D, ul Islam A, et al. Triple  
373 artemisinin-based combination therapies versus artemisinin-based combination therapies for

- 374 uncomplicated *Plasmodium falciparum* malaria: a multicentre, open-label, randomised clinical trial. *The*  
375 *Lancet*. 2020;395:1345–60.
- 376 23. Kunkel A, White M, Piola P. Novel anti-malarial drug strategies to prevent artemisinin partner drug  
377 resistance: A model-based analysis. *PLOS Computational Biology*. Public Library of Science;  
378 2021;17:e1008850.
- 379 24. Nguyen TD, Gao B, Amaratunga C, Dhorda M, Tran TN-A, White NJ, et al. Preventing antimalarial  
380 drug resistance with triple artemisinin-based combination therapies. *medRxiv*.  
381 2022;2022.10.21.22281347.
- 382 25. Cohen JL, Yavuz E, Morris A, Arkedis J, Sabot O. Do patients adhere to over-the-counter artemisinin  
383 combination therapy for malaria? evidence from an intervention study in Uganda. *Malaria Journal*.  
384 2012;11:83.
- 385 26. Banek K, Webb EL, Smith SJ, Chandramohan D, Staedke SG. Adherence to treatment with  
386 artemether–lumefantrine or amodiaquine–artesunate for uncomplicated malaria in children in Sierra  
387 Leone: a randomized trial. *Malaria Journal*. 2018;17:222.
- 388 27. White NJ. Cardiotoxicity of antimalarial drugs. *The Lancet Infectious Diseases*. 2007;7:549–58.
- 389 28. Chan XHS, Haeusler IL, Win YN, Pike J, Hanboonkunupakarn B, Hanafiah M, et al. The  
390 cardiovascular effects of amodiaquine and structurally related antimalarials: An individual patient data  
391 meta-analysis. *PLOS Medicine*. Public Library of Science; 2021;18:e1003766.
- 392 29. Haeusler IL, Chan XHS, Guérin PJ, White NJ. The arrhythmogenic cardiotoxicity of the quinoline  
393 and structurally related antimalarial drugs: a systematic review. *BMC Medicine*. 2018;16:200.
- 394 30. Pongtavornpinyo W, Hastings IM, Dondorp A, White LJ, Maude RJ, Saralamba S, et al. Probability  
395 of emergence of antimalarial resistance in different stages of the parasite life cycle. *Evol Appl*. John  
396 Wiley & Sons, Ltd; 2009;2:52–61.
- 397 31. Gansané A, Candrinho B, Mbituyumuremyi A, Uhomoibhi P, NFalé S, Mohammed AB, et al. Design  
398 and methods for a quasi-experimental pilot study to evaluate the impact of dual active ingredient  
399 insecticide-treated nets on malaria burden in five regions in sub-Saharan Africa. *Malaria Journal*.  
400 2022;21:19.
- 401 32. Asua V, Conrad MD, Aydemir O, Duvalsaint M, Legac J, Duarte E, et al. Changing Prevalence of  
402 Potential Mediators of Aminoquinoline, Antifolate, and Artemisinin Resistance Across Uganda. *The*  
403 *Journal of Infectious Diseases*. 2021;223:985–94.
- 404 33. Asua V, Vinden J, Conrad MD, Legac J, Kigozi SP, Kamya MR, et al. Changing Molecular Markers  
405 of Antimalarial Drug Sensitivity across Uganda. *Antimicrobial Agents and Chemotherapy*. 2019;63.
- 406 34. Balikagala B, Fukuda N, Ikeda M, Katuro OT, Tachibana S-I, Yamauchi M, et al. Evidence of  
407 Artemisinin-Resistant Malaria in Africa. *N Engl J Med*. Massachusetts Medical Society; 2021;385:1163–  
408 71.
- 409 35. Tindana P, de Haan F, Amaratunga C, Dhorda M, van der Pluijm RW, Dondorp AM, et al. Deploying  
410 triple artemisinin-based combination therapy (TACT) for malaria treatment in Africa: ethical and  
411 practical considerations. *Malaria Journal*. 2021;20:119.

- 412 36. Nguyen TD, Olliaro P, Dondorp AM, Baird JK, Lam HM, Farrar J, et al. Optimum population-level  
413 use of artemisinin combination therapies: a modelling study. *Lancet Glob Health*. Elsevier; 2015;3:e758–  
414 66.
- 415 37. Zupko RJ, Nguyen TD, Somé AF, Tran TN-A, Gerardin J, Dudas P, et al. Long-term effects of  
416 increased adoption of artemisinin combination therapies in Burkina Faso. *PLOS Global Public Health*.  
417 Public Library of Science; 2022;2:e0000111.
- 418 38. Weiss DJ, Lucas TCD, Nguyen M, Nandi AK, Bisanzio D, Battle KE, et al. Mapping the global  
419 prevalence, incidence, and mortality of *Plasmodium falciparum*, 2000–17: a spatial and temporal  
420 modelling study. *Lancet*. Elsevier; 2019;394:322–31.
- 421 39. National Institute of Statistics of Rwanda, Ministry of Health, The DHS Program. Rwanda  
422 Demographic and Health Survey 2019-20: Key Indicators [Internet]. Kigali, Rwanda, and Rockville,  
423 Maryland, USA: National Institute of Statistics of Rwanda; 2020 Oct p. 53. Available from:  
424 <https://www.statistics.gov.rw/publication/demographic-and-health-survey-20192020-key-indicators>
- 425 40. Wesolowski A, Stresman G, Eagle N, Stevenson J, Owaga C, Marube E, et al. Quantifying travel  
426 behavior for infectious disease research: a comparison of data from surveys and mobile phones. *Scientific*  
427 *Reports*. 2014;4:5678.
- 428 41. Wesolowski A, O’Meara WP, Eagle N, Tatem AJ, Buckee CO. Evaluating Spatial Interaction Models  
429 for Regional Mobility in Sub-Saharan Africa. *PLoS Comput Biol*. 2015;11:e1004267.
- 430 42. U.S. President’s Malaria Initiative. U.S. President’s Malaria Initiative Rwanda: Malaria Operational  
431 Plan FY 2020 [Internet]. Available from: <https://www.pmi.gov/fy-2020-rwanda-malaria-operational-plan/>
- 432 43. Hakizimana D, Ntizimira C, Mbituyumuremyi A, Hakizimana E, Mahmoud H, Birindabagabo P, et al.  
433 The impact of Covid-19 on malaria services in three high endemic districts in Rwanda: a mixed-method  
434 study. *Malaria Journal*. 2022;21:48.
- 435

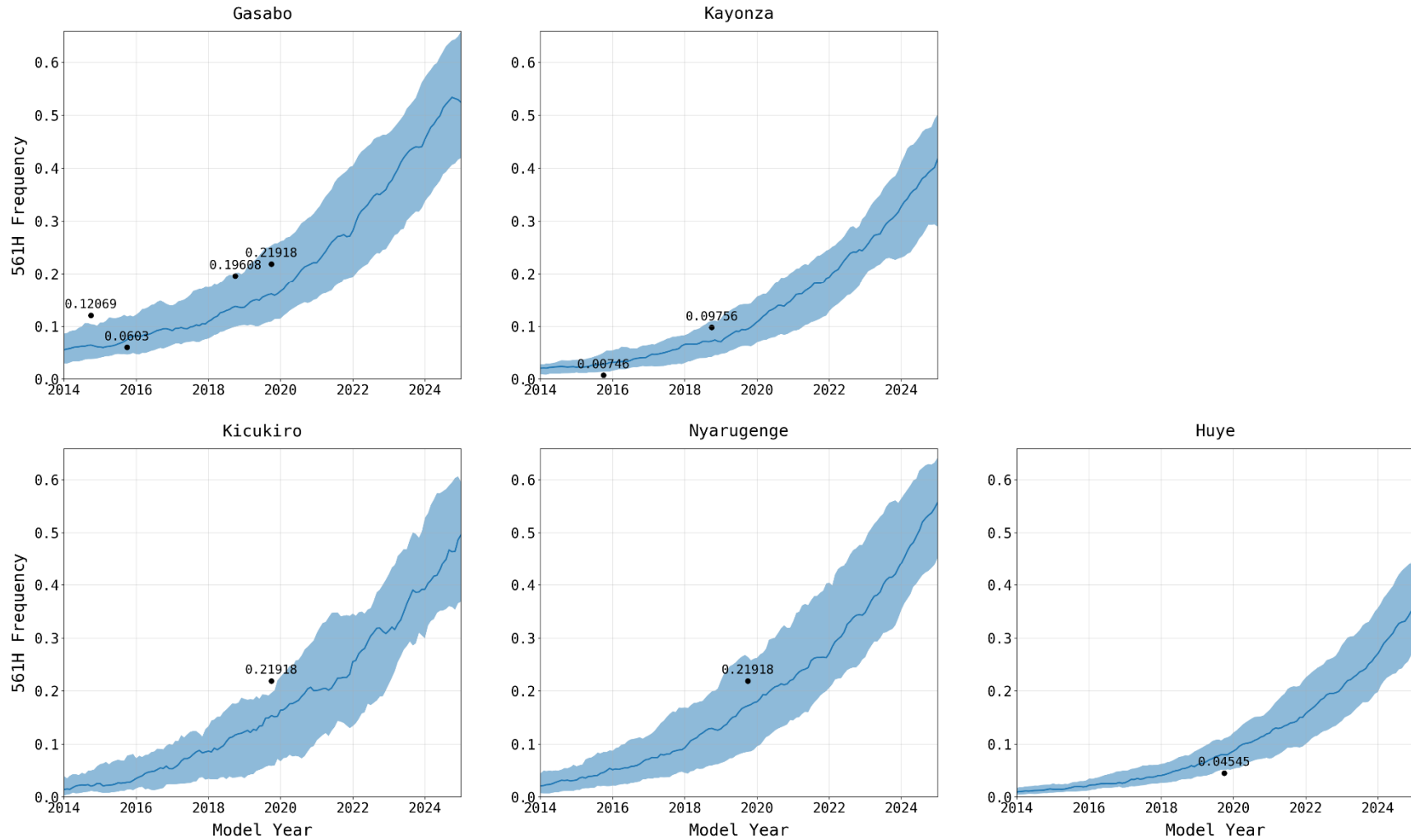
436 **Table 1:** Summary of the primary drug therapy interventions examined using the simulation.

<b>Intervention</b>	<b>Therapy</b>
AL Extension	AL (4-day course)
	AL (5-day course)
AL Replacement	ASAQ
	DHA-PPQ
Multiple first-line therapies (MFT)	ASAQ (75%) + DHA-PPQ (25%)
	ASAQ (50%) + DHA-PPQ (50%)
	ASAQ (25%) + DHA-PPQ (75%)
	AL (75%) + ASAQ (25%)
	AL (50%) + ASAQ (50%)
	AL (25%) + ASAQ (75%)
	AL (75%) + DHA-PPQ(25%)
	AL (50%) + DHA-PPQ(50%)
AL (25%) + DHA-PPQ(75%)	
Rotation to DHA-PPQ, followed by Rotation to MFT	DHA-PPQ (3 years), then AL (50%) + ASAQ (50%)
	DHA-PPQ (3 years), then 5-day course of AL (50%) + ASAQ
Triple ACT (TACT)	ALAQ
	ASMQ-PPQ

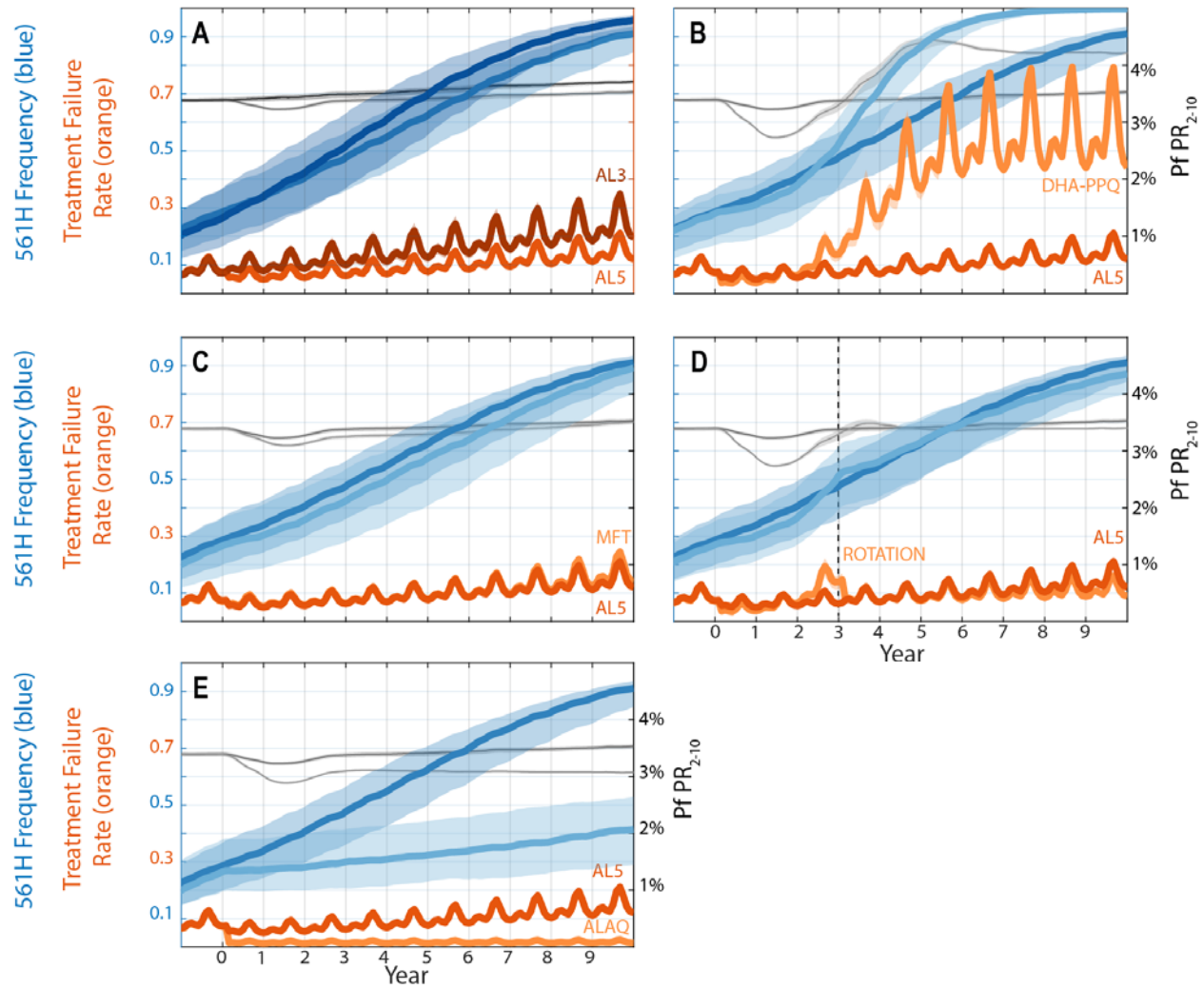
437



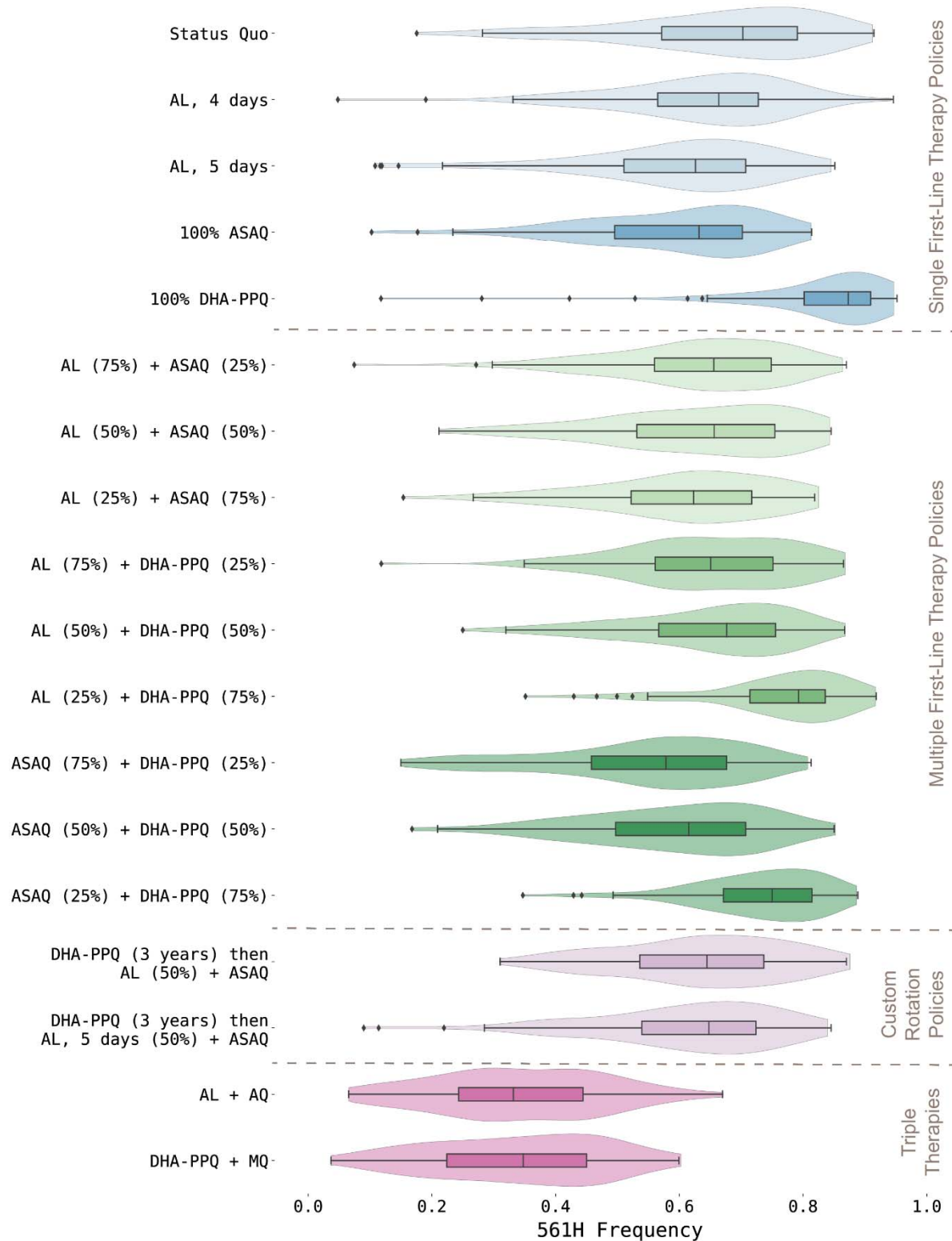
438 **Fig. 1: Calibration of simulated 561H allele frequency versus known frequency.** 561H mutations are artificially introduced into the simulation (ten years  
439 prior to detection) in Gasabo district and allowed to evolve and increase in frequency, shown here through 2025. 561H alleles are also allowed to spread across  
440 the simulated landscape via human migration. The simulated allele frequencies in five districts (median and IQR shown with blue line and shaded area,  $n = 100$ )  
441 are compared to known allele-frequency data [6,7,10,11] (black dots). Gasabo, Kicukiro, and Nyarugenge districts make up Kigali City. Huye district is in  
442 southern Rwanda, and Kayonza district in in eastern Rwanda. The calibrated model is largely in agreement with known 561H spatial evolutionary patterns.



444 **Fig. 2: Projected 561H allele frequencies and treatment failure percentages under potential intervention**  
445 **scenarios.** Orange lines show the percentage of treatment failures among all treated individuals in the populations;  
446 dark orange corresponding to the status quo (AL3, or three days of AL therapy), medium orange to a feasible near-  
447 term intervention (AL5, or five days of AL therapy), and light orange to other potential intervention possibilities.  
448 Blue lines show the frequency of the 561H alleles for the status quo AL3 (dark blue), feasible near-term intervention  
449 AL5 (medium blue), and other potential interventions (light blue). Black and gray lines correspond to 12-months  
450 smoothed malaria prevalence ( $PfPR_{2-10}$ ) in status quo AL3 (black), feasible near-term intervention AL5 (medium  
451 gray), and other potential interventions (light gray). All bands show interquartile range. (A) Comparison between  
452 status quo (AL3, darker lines) and AL5. (B) Comparison between AL5 and switching to DHA-PPQ (lighter lines) as  
453 first-line therapy. Note here that under DHA-PPQ prevalence drops early (to <3%) and later rises to nearly 4.5%.  
454 This occurs because piperaquine resistance evolves quickly and reaches >0.50 genotype frequencies after three  
455 years, resulting in high prevalence and high treatment failure. (C) Comparison between AL5 (darker colors) and an  
456 MFT policy using ASAQ (75% of treatments) and DHA-PPQ (25%). (D) Comparison between AL5 (darker colors)  
457 and a rotation strategy where DHA-PPQ is used for three years, and then replaced with an MFT policy using AL5  
458 (50%) and ASAQ (50%). (E) Comparison between AL5 (darker colors) and the triple therapy artemether-  
459 lumefantrine-amodiaquine (ALAQ).



461 **Fig. 3: Projected 561H allele frequency after five years.** Under the status quo scenario the 561H frequency is  
462 likely to be high, although this characteristic is shared by most of the other policy interventions. While the stochastic  
463 environment of the simulation allows for some outliers, the general trend is towards fixation, with complete  
464 fixation under some interventions when DHA-PPQ is used.



466 **Fig. 4: Comparison of projected treatment failures after five years.** When selecting a drug policy intervention  
467 ensuring the therapeutic efficacy of the treatment is an important goal. Here we see that despite the intervention, for  
468 most interventions the treatment failure rate is likely to be above the 10% threshold recommended by the WHO for a  
469 change in policy. However, interventions involving multiple first-line therapies (MFTs) have some of the lowest  
470 treatment failure rates given the currently available therapies.

