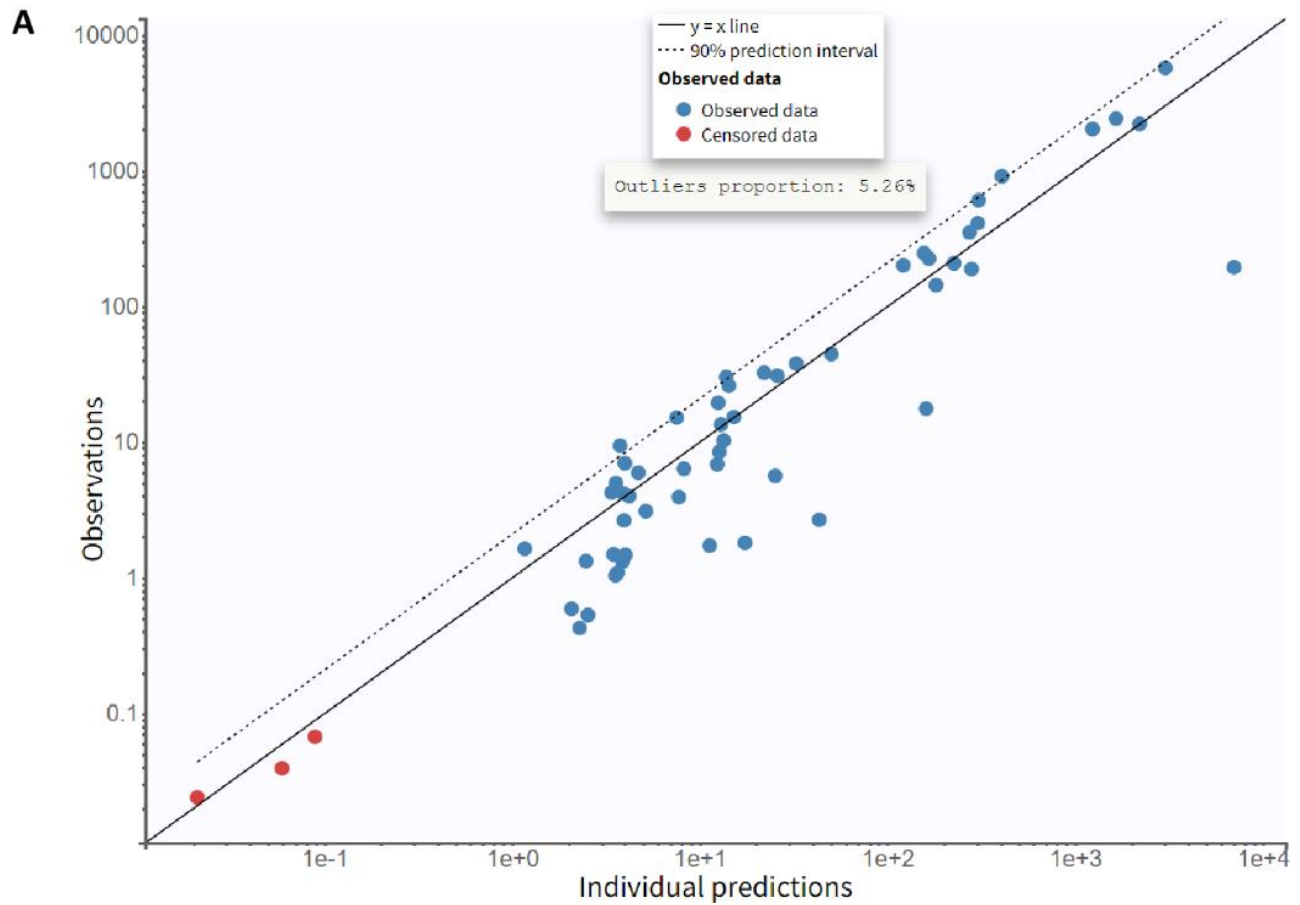


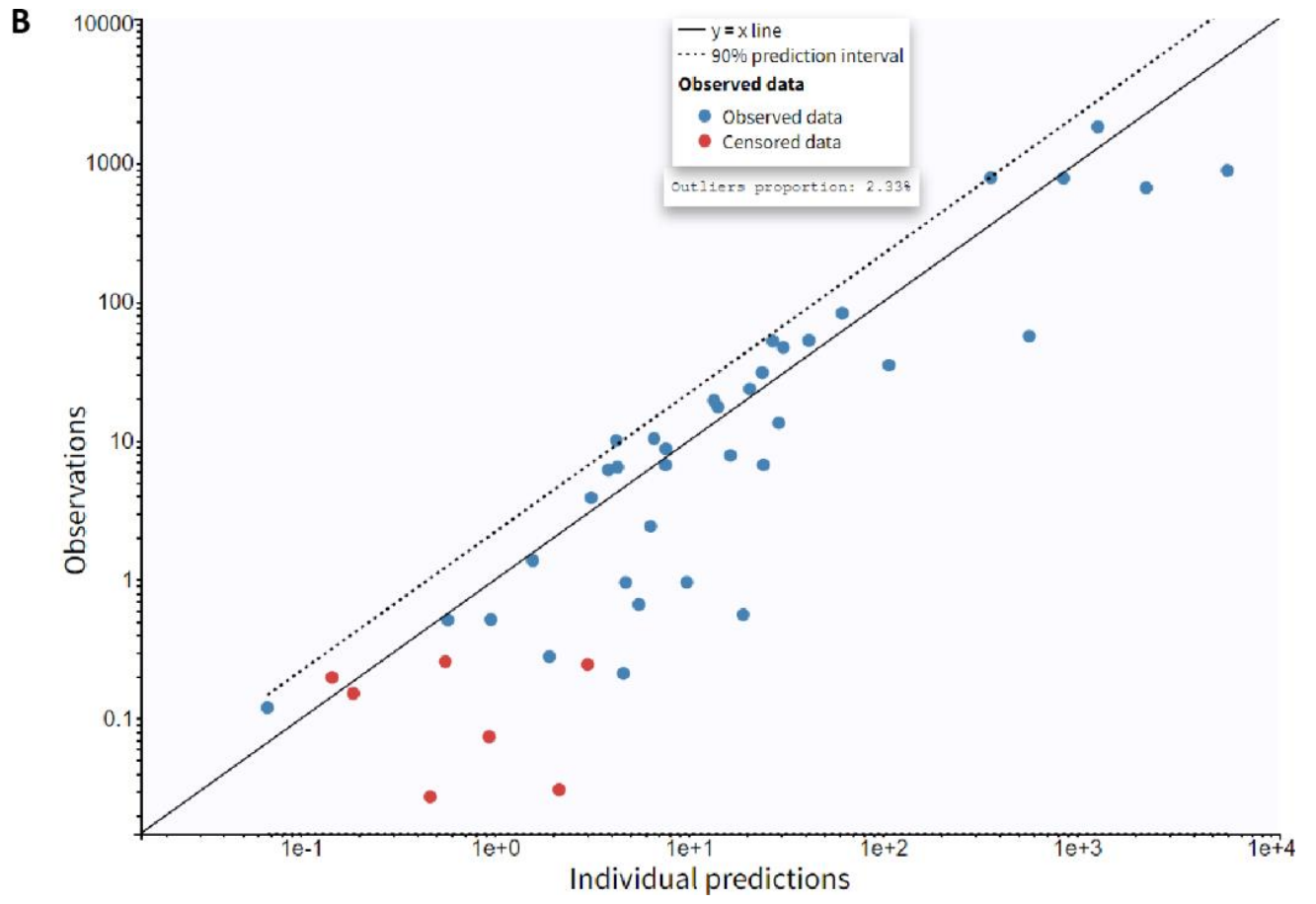
# Modeling and Simulation of CAR T cell Therapy in Chronic Lymphocytic Leukemia Patients

Ujwani Nukala<sup>1</sup>, Marisabel Rodriguez Messan<sup>1</sup>, Osman N. Yogurtcu<sup>1</sup>, Zuben Sauna<sup>2</sup>, Hong Yang<sup>1\*</sup>

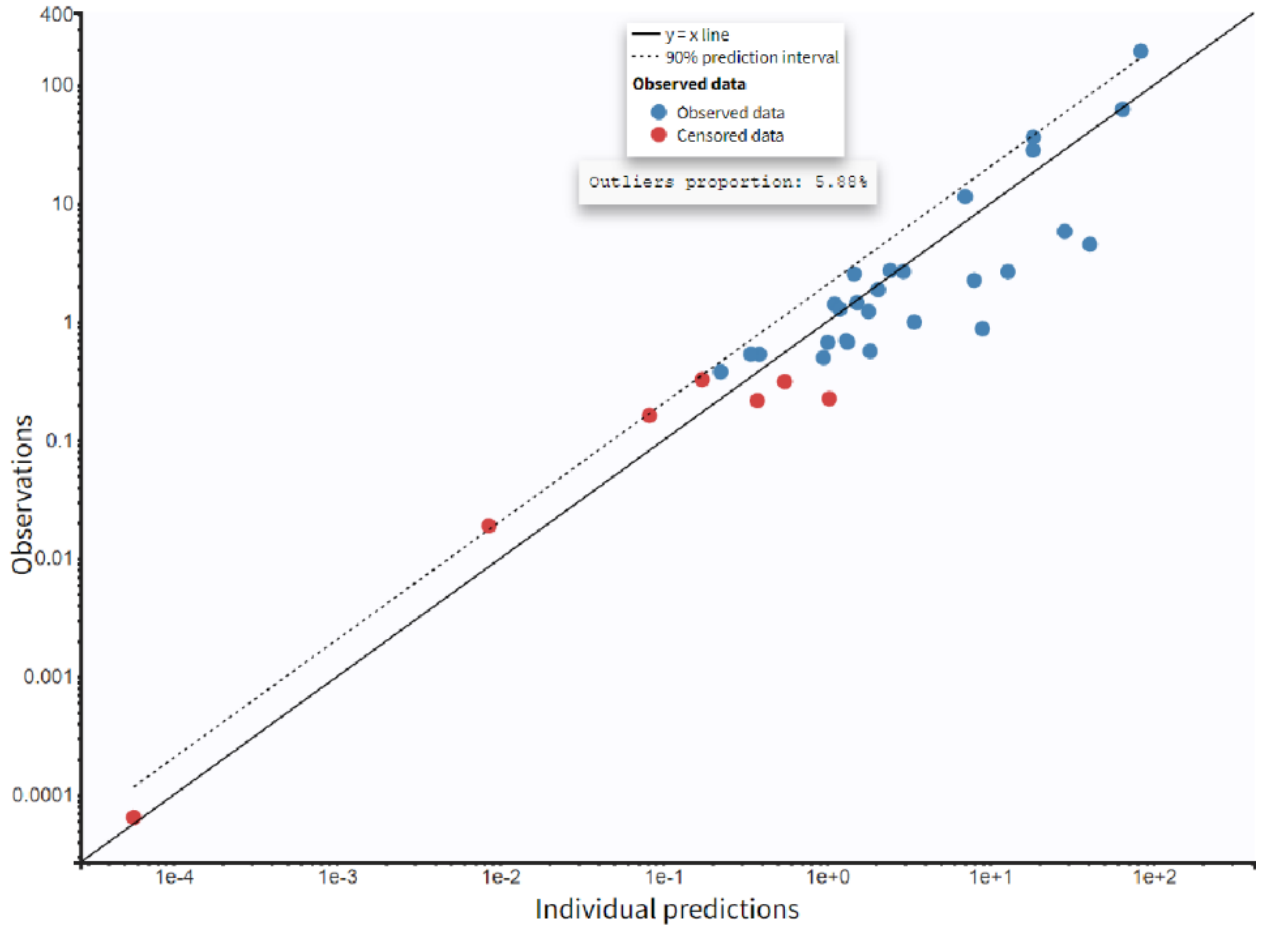
<sup>1</sup> Office of Biostatistics and Pharmacovigilance, Center for Biologics Evaluation and Research, US FDA, Silver Spring, MD, USA  
<sup>2</sup> Office of Tissues and Advanced Therapies, Center for Biologics Evaluation and Research, US FDA, Silver Spring, MD, USA

## Supplementary Figures:

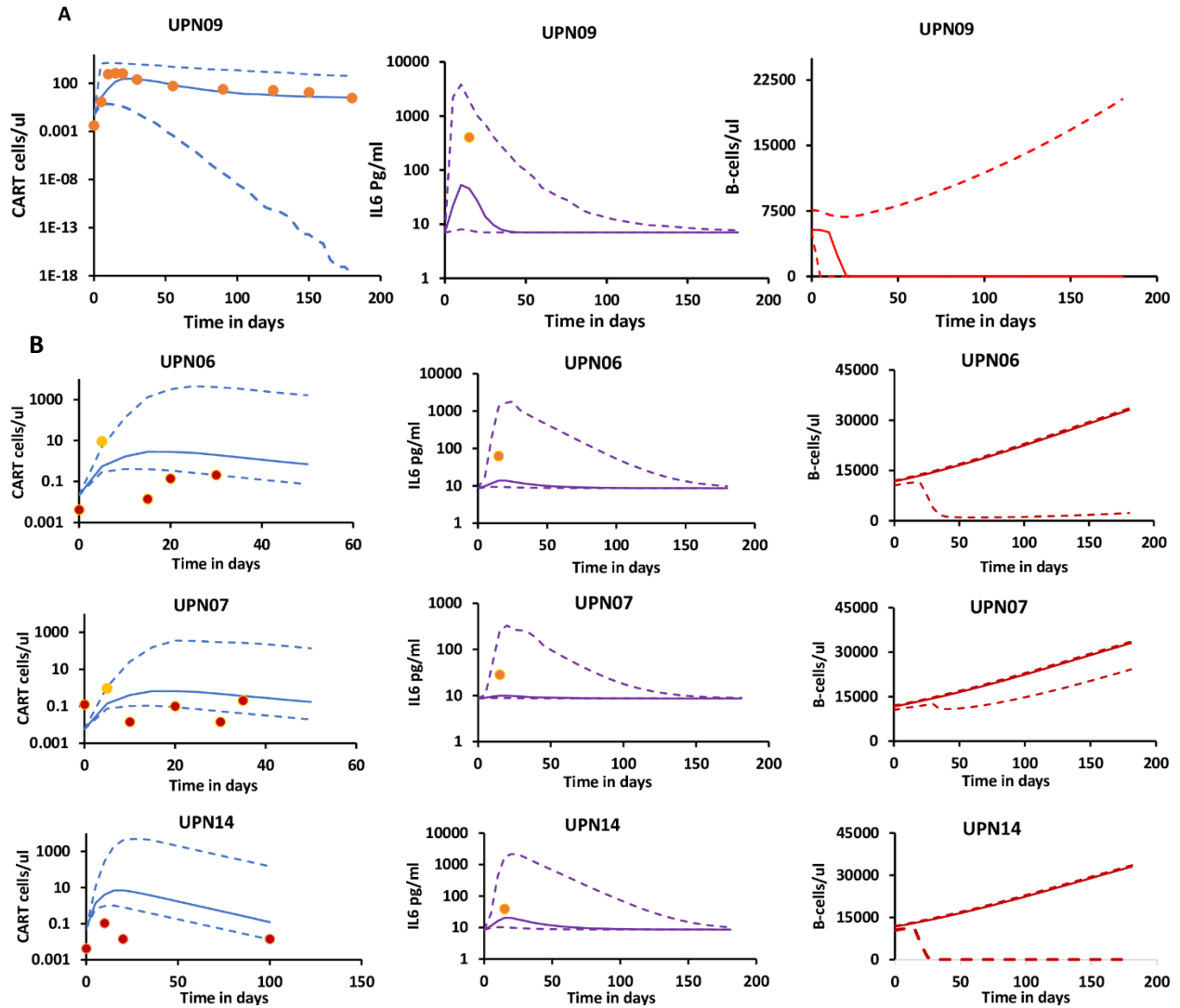




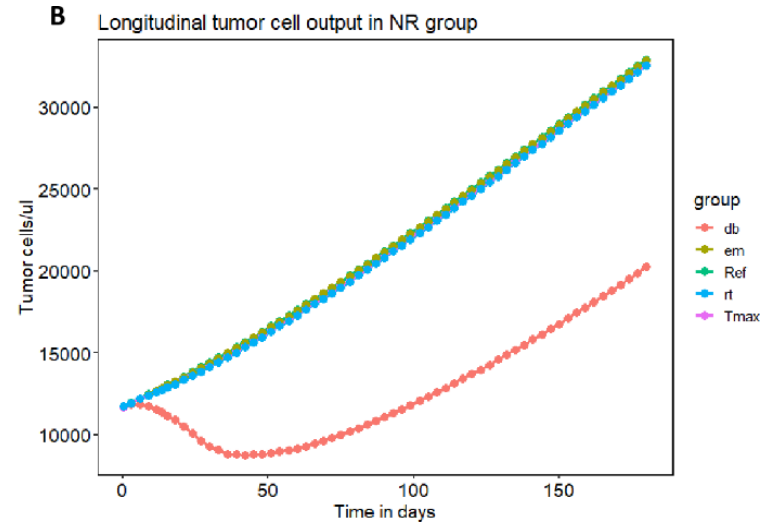
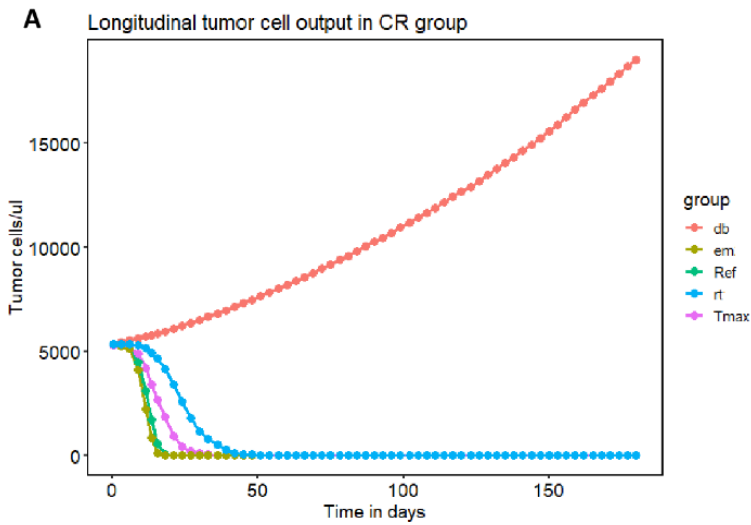
C



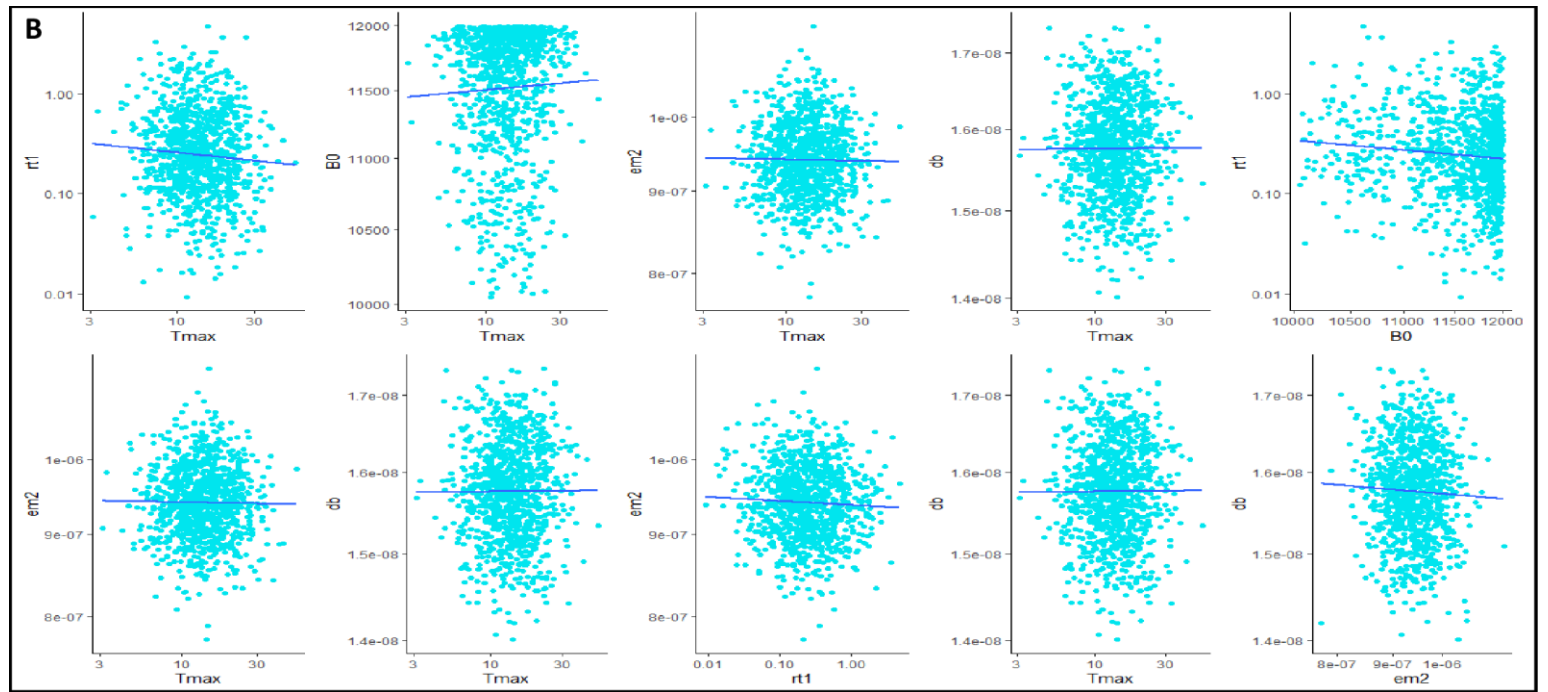
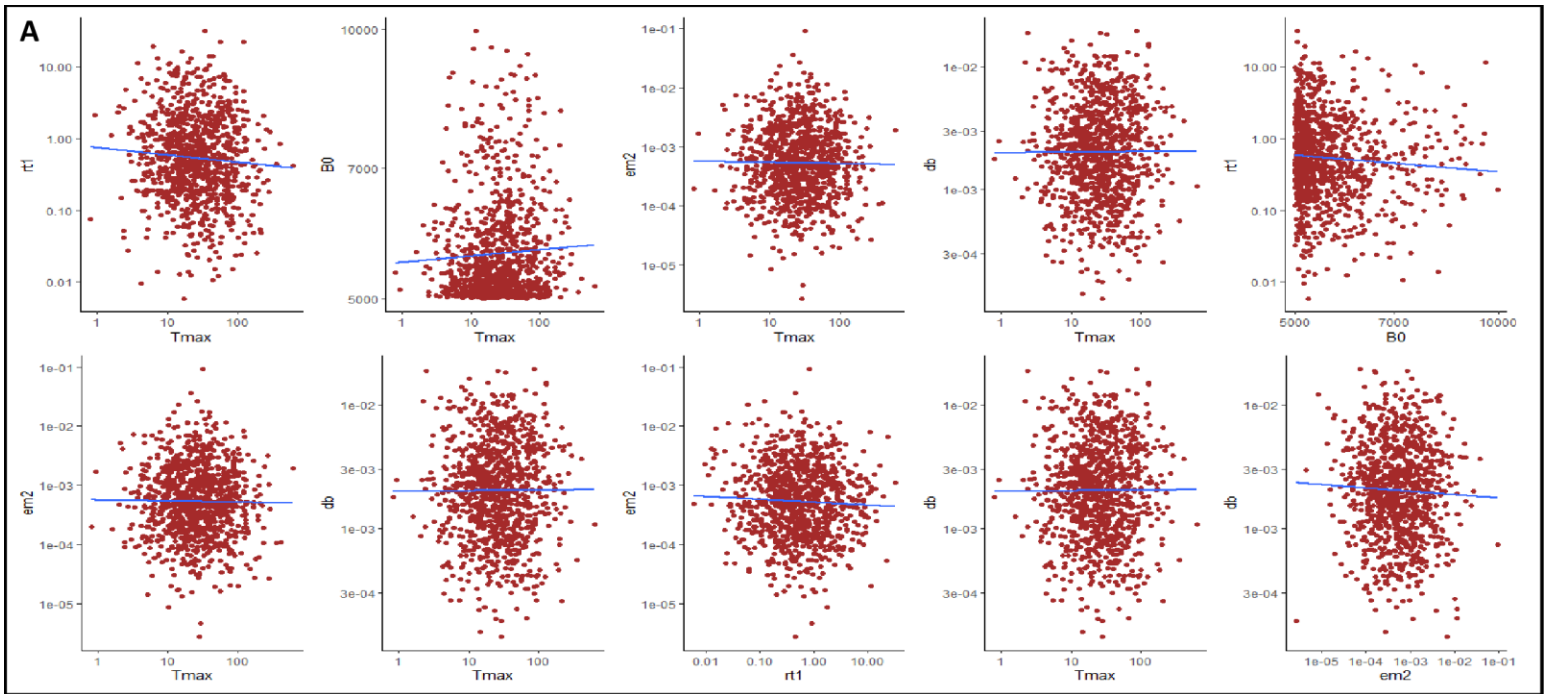
**Supplementary figure 1.** Goodness-of-fit plots showing observed versus model predicted individual data points of CAR T cells in (A) CR patients (B) PR patients and (C) NR patients



**Supplementary figure 2.** (A) Model validation plots showing model predictions for CAR T cells, IL6 and Tumor cells in patient (UPN09) reported as CR. Solid dots are observed data and Solid line is model predicted median with 95% CI as dotted lines. Observed data for B cells was not available and B cell concentration predictions are used as surrogate for patient response. (B) Model validation plots showing model predictions for CAR T cells, IL6 and Tumor cells in patients (UPN06, UPN07, UPN14) reported as NR. Solid dots are observed data and Solid line is model predicted median with 75% CI for CART, IL6 and 95% CI for B-cells as dotted lines. For patients UPN06, UPN07, UPN14, red color solid dots for CAR T cells are below the detection level.



**Supplementary figure 3.** Median longitudinal tumor cell predictions from simulating 1000 CR and NR virtual patients each, over the period of 180 days after varying one parameter at a time. In comparison with the reference curve (green) where the estimated population parameters for CR or NR from model fitting were used respectively,  $d_b$  (killing rate of B-cells by CART cells) parameter shows greatest impact on tumor cell dynamics.



**Supplementary figure 4.** Correlations between parameters in (A) CR patients (red) and (B) NR Patients (blue). Except for a small negative correlation between CAR T cell proliferation rate ( $r_t$ ) and initial tumor burden ( $B_0$ ) in NR group, none of these correlations were statistically significant.

## Monolix Model Code:

[LONGITUDINAL]

input = {F,Tmax,IL60,B0,rt1,de2,em2,db,pi2,di}

IL60 = {use = regressor}

PK:

V = 3e6

depot(target=E, p=F/V)

EQUATION:

odeType=stiff

t\_0 = 0

E\_0 = 0

I\_0 = IL60

B\_0 = B0

pi1 = IL60 \* di

rb = 9.3e-3

Kb = 57000

dm = 0.00027

me2 = 1

de1=0

rt2=0

em1=0

me1=0

if t<= Tmax

rt=rt1

de = de1

em = em1

me = me1

else

rt=rt2

de =de2

em = em2

me = me2

end

Bf = B/(hb+B)

ddt\_B = rb \* B\*(1-B/Kb) - db \* B \* E

ddt\_E = rt\*Bf\* E - de\*E - (1-Bf)\*em\*E + Bf\*me\*M

ddt\_M = (1-Bf)\*em\*E - dm\*M - Bf\*me\*M

ddt\_I = -di\*I + pi2 \* B \* E + pi1

T = E+M

Tumor = B

OUTPUT:

output = {T,Tumor,I}

table = {T,Tumor,E,M,I}