

**Supplementary Information**  
**to**  
**Big Five, self-reported depression, and anxiety are predictive for**  
**Alzheimer's disease**

Konrad F. Waschkies<sup>1,2</sup>, Joram Soch<sup>1,3</sup>, Margarita Darna<sup>1,4</sup>, Anni Richter<sup>4</sup>, Slawek Altenstein<sup>5,6</sup>, Aline Beyle<sup>7,31</sup>, Frederic Brosseron<sup>7</sup>, Friederike Buchholz<sup>5,9</sup>, Michaela Butryn<sup>10,32</sup>, Laura Dobisch<sup>10</sup>, Michael Ewers<sup>11,12</sup>, Klaus Fliessbach<sup>7,8</sup>, Tatjana Gabelin<sup>9</sup>, Wenzel Glanz<sup>10,32</sup>, Doreen Goerss<sup>13,14</sup>, Daria Gref<sup>9</sup>, Daniel Janowitz<sup>12</sup>, Ingo Kilimann<sup>13,14</sup>, Andrea Lohse<sup>6</sup>, Matthias H. Munk<sup>15,16</sup>, Boris-Stephan Rauchmann<sup>17,18,19</sup>, Ayda Rostamzadeh<sup>20</sup>, Nina Roy<sup>7</sup>, Eike Jakob Spruth<sup>5,6</sup>, Peter Dechent<sup>21</sup>, Michael T. Heneka<sup>7</sup>, Stefan Hetzer<sup>22</sup>, Alfredo Ramirez<sup>7,8, 23,24,25</sup>, Klaus Scheffler<sup>26</sup>, Katharina Buerger<sup>11,12</sup>, Christoph Laske<sup>15,16</sup>, Robert Perneczky<sup>11,17,18,27,28</sup>, Oliver Peters<sup>5, 9</sup>, Josef Priller<sup>5,6,29,30</sup>, Anja Schneider<sup>7,8</sup>, Annika Spottke<sup>7, 31</sup>, Stefan Teipel<sup>13,14</sup>, Emrah Düzel<sup>10,32</sup>, Frank Jessen<sup>7, 20,33</sup>, Jens Wiltfang<sup>1,2,34</sup>, Björn H. Schott<sup>#1,2,4</sup>, & Jasmin M. Kizilirmak<sup>#1,35</sup>

<sup>1</sup>) German Center for Neurodegenerative Diseases (DZNE), Göttingen, Germany

<sup>2</sup>) Department of Psychiatry and Psychotherapy, University Medical Center Göttingen, Göttingen, Germany

<sup>3</sup>) Bernstein Center for Computational Neuroscience, Berlin, Germany

<sup>4</sup>) Leibniz Institute for Neurobiology, Magdeburg, Germany

<sup>5</sup>) German Center for Neurodegenerative Diseases (DZNE), Berlin, Germany

<sup>6</sup>) Department of Psychiatry and Psychotherapy, Charité, Berlin, Germany

<sup>7</sup>) German Center for Neurodegenerative Diseases (DZNE), Bonn, Germany

<sup>8</sup>) University of Bonn Medical Center, Dept. of Neurodegenerative Disease and Geriatric Psychiatry/Psychiatry, Bonn, Germany

<sup>9</sup>) Charité – Universitätsmedizin Berlin, corporate member of Freie Universität Berlin and Humboldt-Universität zu Berlin-Institute of Psychiatry and Psychotherapy

<sup>10</sup>) German Center for Neurodegenerative Diseases (DZNE), Magdeburg, Germany

<sup>11</sup>) German Center for Neurodegenerative Diseases (DZNE), Munich, Germany

<sup>12</sup>) Institute for Stroke and Dementia Research (ISD), University Hospital, LMU Munich, Munich, Germany

<sup>13</sup>) German Center for Neurodegenerative Diseases (DZNE), Rostock, Germany

<sup>14</sup>) Department of Psychosomatic Medicine, Rostock University Medical Center, Rostock, Germany

<sup>15</sup>) German Center for Neurodegenerative Diseases (DZNE), Tübingen, Germany

<sup>16</sup>) Section for Dementia Research, Hertie Institute for Clinical Brain Research and Department of Psychiatry and Psychotherapy, University of Tübingen, Tübingen, Germany

<sup>17</sup>) Department of Psychiatry and Psychotherapy, University Hospital, LMU Munich, Munich, Germany

<sup>18</sup>) Sheffield Institute for Translational Neuroscience (SITraN), University of Sheffield, Sheffield, UK

<sup>19</sup>) Department of Neuroradiology, University Hospital LMU, Munich, Germany

<sup>20</sup>) Department of Psychiatry, University of Cologne, Medical Faculty, Cologne, Germany

## Big Five, depression, and anxiety are predictive for AD | Supplementary Information

- <sup>21)</sup> MR-Research in Neurosciences, Department of Cognitive Neurology, Georg-August-University Goettingen, Germany
- <sup>22)</sup> Berlin Center for Advanced Neuroimaging, Charité – Universitätsmedizin Berlin, Berlin, Germany
- <sup>23)</sup> Excellence Cluster on Cellular Stress Responses in Aging-Associated Diseases (CECAD), University of Cologne, Cologne, Germany
- <sup>24)</sup> Division of Neurogenetics and Molecular Psychiatry, Department of Psychiatry and Psychotherapy, Faculty of Medicine and University Hospital Cologne, University of Cologne, Cologne, Germany
- <sup>25)</sup> Department of Psychiatry & Glenn Biggs Institute for Alzheimer’s and Neurodegenerative Diseases, San Antonio, TX, USA
- <sup>26)</sup> Department for Biomedical Magnetic Resonance, University of Tübingen, 72076 Tübingen, Germany
- <sup>27)</sup> Munich Cluster for Systems Neurology (SyNergy) Munich, Munich, Germany
- <sup>28)</sup> Ageing Epidemiology Research Unit (AGE), School of Public Health, Imperial College London, London, UK
- <sup>29)</sup> School of Medicine, Technical University of Munich; Department of Psychiatry and Psychotherapy, Munich, Germany
- <sup>30)</sup> University of Edinburgh and UK DRI, Edinburgh, United Kingdom
- <sup>31)</sup> Department of Neurology, University of Bonn, Bonn, Germany
- <sup>32)</sup> Institute of Cognitive Neurology and Dementia Research (IKND), Otto-von-Guericke University, Magdeburg, Germany
- <sup>33)</sup> Excellence Cluster on Cellular Stress Responses in Aging-Associated Diseases (CECAD), University of Cologne, Cologne, Germany
- <sup>34)</sup> Neurosciences and Signaling Group, Institute of Biomedicine (iBiMED), Department of Medical Sciences, University of Aveiro, Aveiro, Portugal
- <sup>35)</sup> Neurodidactics and NeuroLab, Institute for Psychology, University of Hildesheim, Hildesheim, Germany

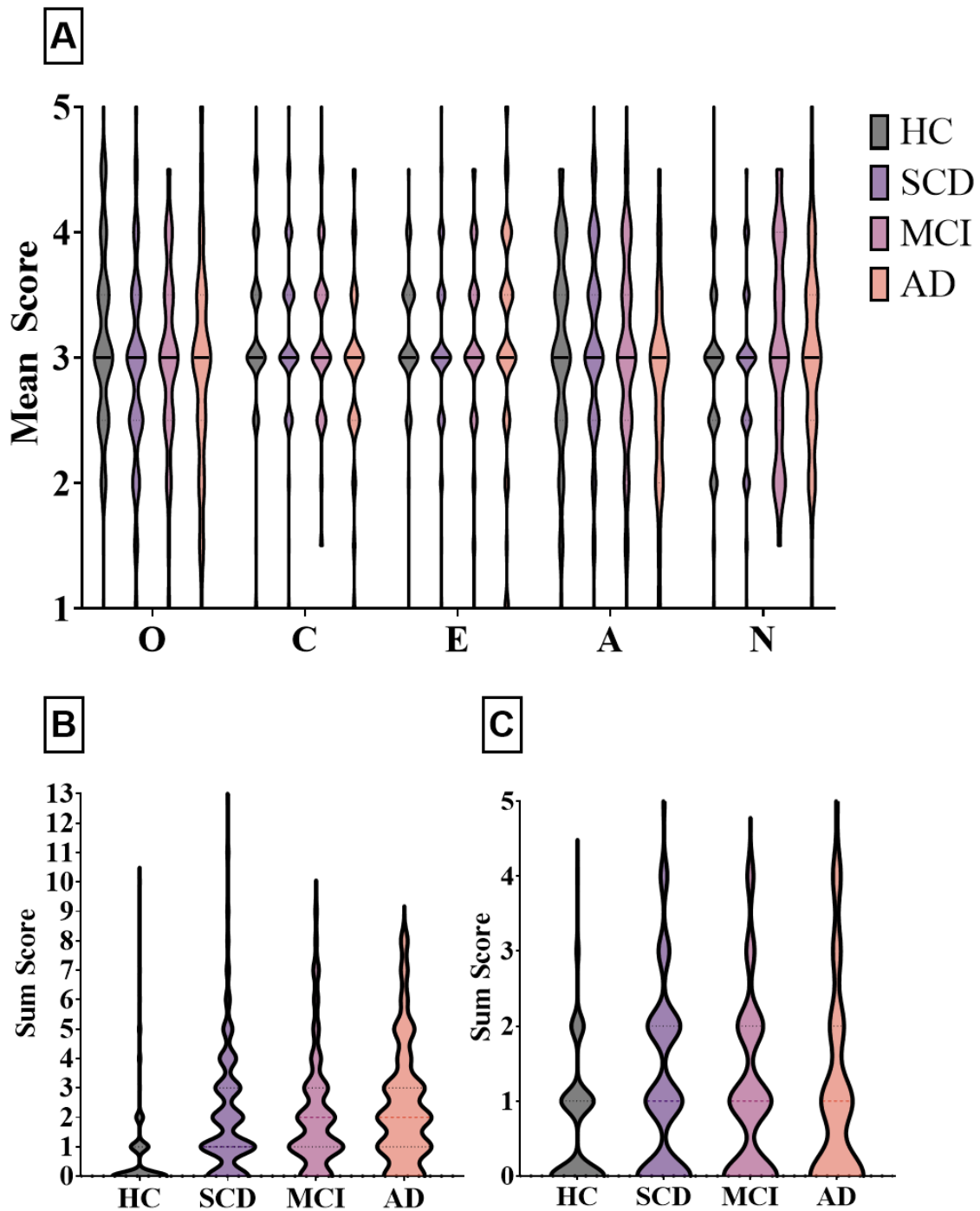
# Correspondence shall be addressed to JMK ([jasmin.kizilirmak@dzne.de](mailto:jasmin.kizilirmak@dzne.de)) for methodological and data analysis questions and BHS ([bjoern-hendrik.schott@dzne.de](mailto:bjoern-hendrik.schott@dzne.de)) for clinical questions.

### Abbreviations

AD	Alzheimer’s disease
BFI	Big Five inventory
CA	class accuracy
CSF	cerebrospinal fluid
DA	decoding accuracy
HC	healthy controls
MCI	mild cognitive impairment
SCD	subjective cognitive decline
SVC	support vector classification
SVM	support vector machine

## 1. Supplementary Methods

### 1.1. Participants



**Figure S1. Violin plots of psychometric scores.** A. Mean BFI-10 scores (O = Openness; C = Conscientiousness; E = Extraversion; A = Agreeableness; N = Neuroticism). B. GDS sum scores. C. GAI-SF sum scores.

## 1.2. Predictor variables

**Table S1. Overview of predictor variables**

Predictor variable(s)	Range	Description
Age	$59 \leq x_i \leq 89$	chronological age in years
Gender	$x_i \in \{0,1\}$	male and female were one-hot-encoded as separate variables
Site	$x_{ij} \in \{0,1\}$	each of 10 sites was one-hot-encoded as a separate variable
Resting-state DMN activity	$x_i \in \mathbb{R}^v$	mPerAF maps masked for DMN
BFI:	$1 \leq x_i \leq 5$	each trait was assessed as the mean of the rating on two items (5-point scales) of the 10-item BFI
– Neuroticism		
– Extraversion		
– Openness		
– Conscientiousness		
– Agreeableness		
Depression	$0 \leq x_i \leq 13$	GDS sum score
Anxiety	$0 \leq x_i \leq 5$	GAI-SF sum score
APOE genotype	$x_i \in \{0, 1, 2\}$	number of $\epsilon 4$ (risk) alleles
CSF:		
– tTau	$66.4 \leq x_i \leq 2067.5$	unit: pg/ml
– pTau181	$14.92 \leq x_i \leq 320.62$	unit: pg/ml
– A $\beta$ 42/40 ratio	$0.026 \leq x_i \leq 0.151$	-

**1.3. Supplementary Results****1.4. Support vector classification with SCD and MCI as one single “risk group”**

In the main paper, we reported that the AD risk states SCD and MCI had low CAs for any feature set, even the current “gold standard” of CSF biomarkers. Because SCD is not yet a well-established diagnosis (Jessen et al., 2020), we decided to collapse the classes SCD and MCI to a common group of “increased AD risk” and ran all seven variants of the SVM classifications described in the main manuscript again with the same specifications.

**Table S2. SVM classification results**

<b>Feature set</b>	<b>value</b>	<b>DA</b>	<b>HC</b>	<b>increased AD risk</b>	<b>AD</b>
<b>1. Null model</b>	mean accuracy	.44	.53	.41	.39
	90% CI	[.38, .51]	[.42, .64]	[.30, .52]	[.28, .50]
	mean <i>p</i>	.044	.081	.298	.361
<b>2. mPerAF</b>	mean accuracy	.46	.46	.36	.55
	90% CI	[.39, .52]	[.35, .57]	[.26, .47]	[.44, .66]
	mean <i>p</i>	.033	.132	.365	.005
<b>3. Personality</b>	mean accuracy	.48	.50	.41	.54
	90% CI	[.42, .54]	[.38, .61]	[.30, .52]	[.43, .65]
	mean <i>p</i>	.007	.088	.254	.031
<b>4. Personality extended</b>	mean accuracy	.53	.61	.41	.56
	90% CI	[.46, .59]	[.50, .72]	[.30, .52]	[.45, .67]
	mean <i>p</i>	.001	.004	.222	.020
<b>5. ApoE</b>	mean accuracy	.53	.58	.39	.63
	90% CI	[.47, .59]	[.46, .68]	[.28, .50]	[.52, .73]
	mean <i>p</i>	.001	.043	.328	.010
<b>6. All w/o CSF</b>	mean accuracy	.47	.47	.37	.56
	90% CI	[.40, .53]	[.36, .58]	[.27, .48]	[.44, .67]
	mean <i>p</i>	.027	.112	.318	.004
<b>7. CSF</b>	mean accuracy	.55	.52	.37	.77
	90% CI	[.46, .64]	[.36, .68]	[.22, .53]	[.61, .88]
	mean <i>p</i>	.006	.119	.433	.002

*Note.* As three groups were included, chance level was at 1/3. Mean accuracy and mean *p* refer to the mean across 30 subsamples. The *p* value was obtained for significant performance above chance.

We found no meaningful change in the performance pattern of the best performing feature sets (see Table S2 and Figure S2). The three best performing feature sets according to mean DA were “CSF markers”, “ApoE” and “personality extended”, whereby the latter two performed equally well (see Table S1). Moreover, as can be seen in Figure S1, CA for the “increased AD risk” class remained poor across all feature sets. We again observed that personality extended had the highest CA for healthy participants (.61), while CSF markers performed best in classifying AD patients correctly (.77).

According to one-sided pairwise comparisons between each feature set<sup>1</sup> and the base model (see Table S3), feature sets “personality”, “personality extended” and “ApoE” performed significantly better than the base model, but “mPerAF” and “all-in-one without CSF” did not.

**Table S3. Inferential statistical comparisons of DA between feature sets**

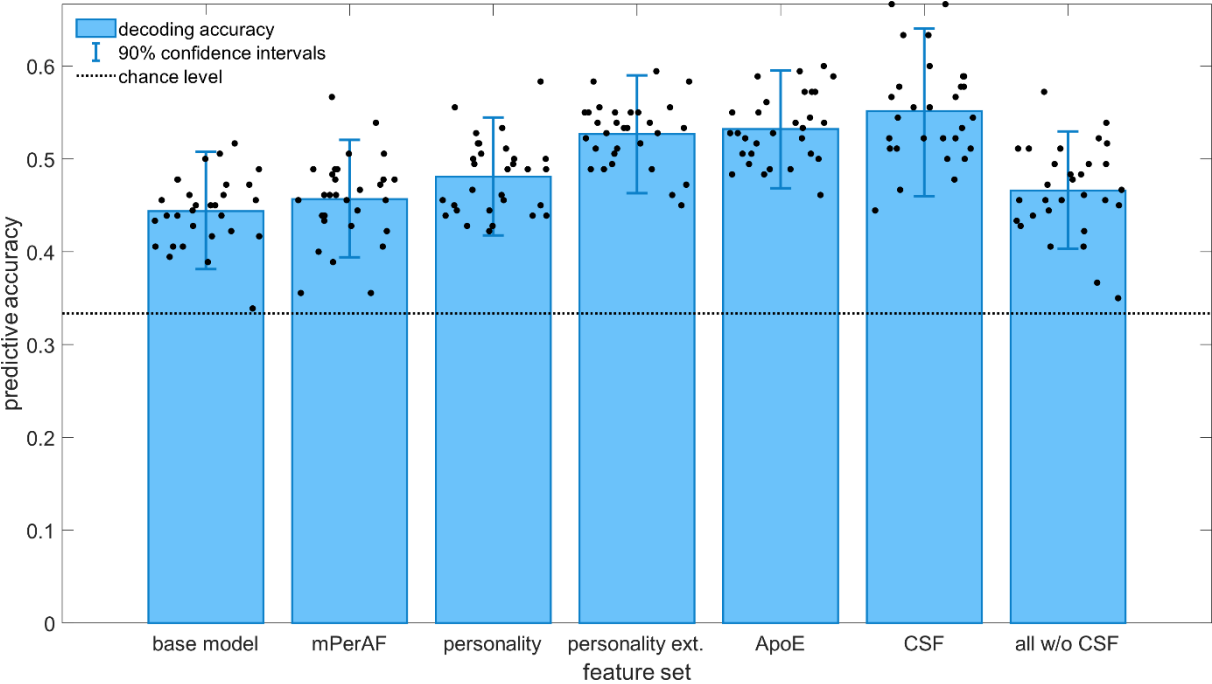
<b>base model vs.</b>	<b>t</b>	<b>p</b>	<b>CI</b>	<b>p adjusted</b>
<b>all w/o CSF</b>	1.96	.030	[0.00, 0.04]	.060
<b>mPerAF</b>	1.16	.128	[-0.01, 0.03]	.128
<b>personality</b>	6.85	<.000	[0.03, 0.05]	<.000
<b>personality extended</b>	9.94	<.000	[0.07, 0.10]	<.000
<b>ApoE</b>	9.85	<.000	[0.07, 0.10]	<.000

*Note. Reported are one-sided t test results for the difference of each model’s classification performance from the base model’s performance. The column “p adjusted” reports p values corrected for multiple comparisons according to the Bonferroni-Holm procedure (Holm, 1979).*

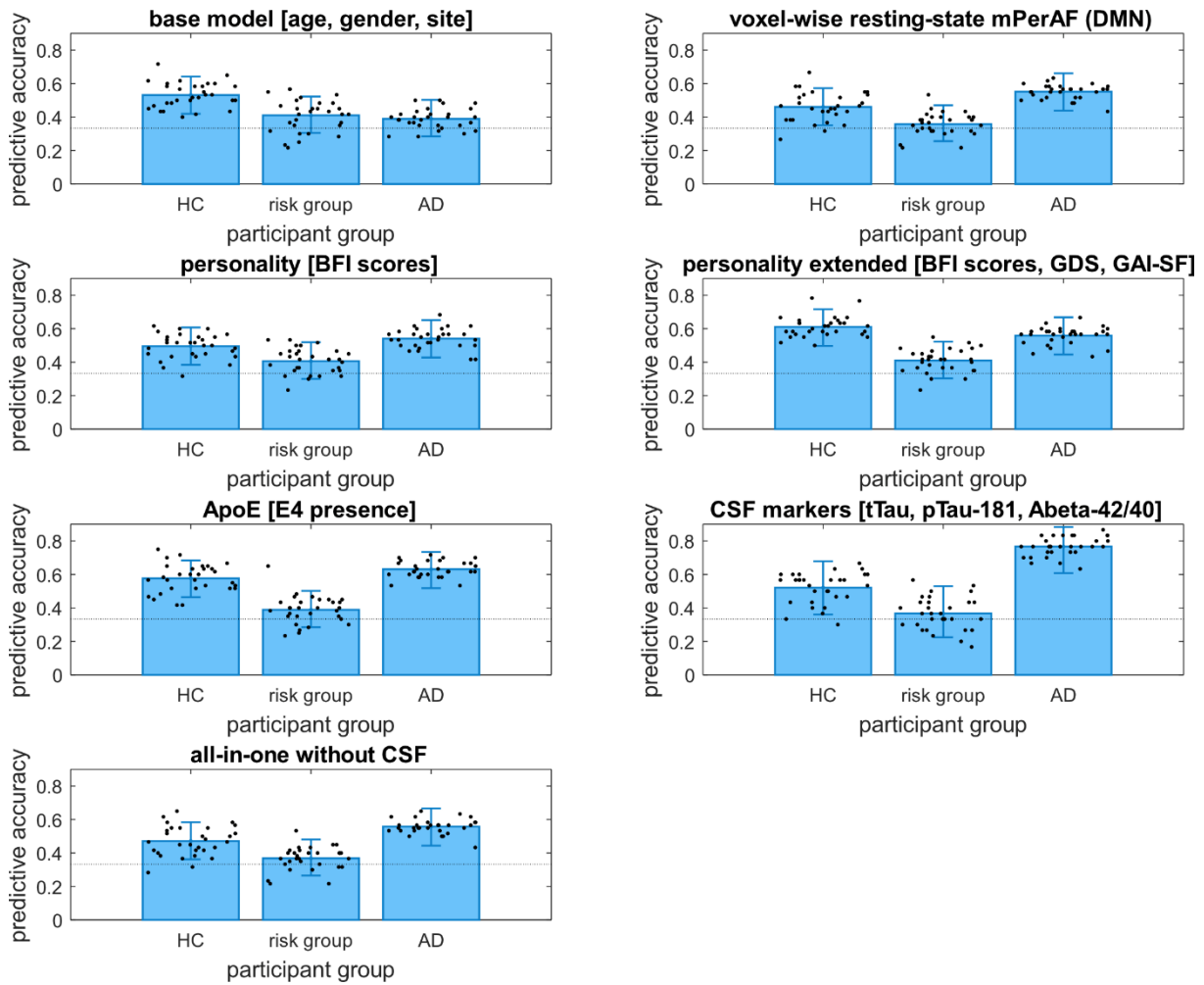
It is of note that the only two feature sets which reached CAs significantly above chance level for both HC and AD were “personality extended” and “ApoE” (Table S1 and Figure S3). CSF markers did not perform significantly above chance for HC.

Although no feature set could predict class membership of the increased “increased AD risk” group well, “personality extended” and “personality” both performed best descriptively, suggesting that personality characterization has diagnostic value for this class that is higher than that of CSF markers (Table S2).

<sup>1</sup> Except for the “CSF” feature set, since it had a different sample size. See next subsection for a solution.



**Figure S2. Decoding accuracies for the assessed feature sets.** Here, SCD and MCI were merged into a “increased AD risk” group. Error bars represent 90% confidence intervals obtained from averaging the confidence intervals of the 30 subsamples (single dots) on which SVCs were performed.



**Figure S3. Class accuracies of the assessed feature sets.** The risk class includes SCD and MCI participants. The dotted line represents chance level, and error bars represent the average 90% confidence interval across all 30 subsamples.



### 1.5. Support vector classification with the same sample size for all feature sets

To enable the inferential statistical comparison of all feature sets' prediction accuracy with the "CSF" feature set, we ran another set of SVCs with a sample that included only participants that had no missing data in any of the features of interest. This led to a reduced sample size of 311 participants (74 HC, 142 SCD, 63 MCI, 32 AD). With this reduced sample, we ran all SVCs for the feature sets described in the main manuscript. Feature set 6 included all predictors this time, including CSF markers. The results are listed in Table S4.

**Table S4. SVM classification results for the reduced sample (all feature sets with N = 311)**

Feature set	value	DA	HC	SCD	MCI	AD
<b>1. Base model</b>	mean accuracy	.35	.34	.32	.25	.49
	90% CI	[.28, .43]	[.20, .50]	[.19, .48]	[.13, .41]	[.33, .65]
	mean <i>p</i>	.064	.302	.373	.511	.073
<b>2. mPerAF</b>	mean accuracy	.35	.33	.25	.29	.52
	90% CI	[.28, .43]	[.20, .49]	[.13, .41]	[.16, .46]	[.36, .68]
	mean <i>p</i>	.095	.300	.550	.410	.015
<b>3. Personality</b>	mean accuracy	.36	.39	.36	.23	.47
	90% CI	[.29, .44]	[.24, .55]	[.22, .53]	[.12, .39]	[.31, .63]
	mean <i>p</i>	.041	.156	.230	.578	.065
<b>4. Personality extended</b>	mean accuracy	.38	.49	.35	.24	.46
	90% CI	[.31, .46]	[.33, .65]	[.21, .52]	[.12, .39]	[.30, .62]
	mean <i>p</i>	.024	.040	.231	.558	.097
<b>5. ApoE</b>	mean accuracy	.38	.46	.28	.18	.60
	90% CI	[.31, .46]	[.30, .62]	[.16, .44]	[.09, .33]	[.43, .75]
	mean <i>p</i>	.027	.108	.459	.685	.016
<b>6. All-in-one (incl. CSF)</b>	mean accuracy	.36	.36	.26	.29	.54
	90% CI	[.29, .44]	[.22, .52]	[.14, .42]	[.16, .45]	[.38, .70]
	mean <i>p</i>	.063	.239	.504	.414	.010
<b>7. CSF</b>	mean accuracy	.42	.45	.37	.19	.67
	90% CI	[.34, .50]	[.29, .61]	[.23, .53]	[.09, .35]	[.50, .81]
	mean <i>p</i>	.019	.100	.263	.684	.002

*Note.* As four groups were included, chance performance was at 0.25. Mean accuracy, mean *p* refers to the mean across 30 subsamples. The *p* value was obtained for significant performance above chance.

Compared to the variant with larger sample sizes, the overall performance ranking of the feature sets was slightly different (see main manuscript), as can be seen in Table S3 and Figure S4. Feature set 7 “CSF” now performed significantly better than any other feature set, although feature sets “personality extended”, “ApoE” still yielded the second and third highest decoding accuracy, respectively (Table S5).

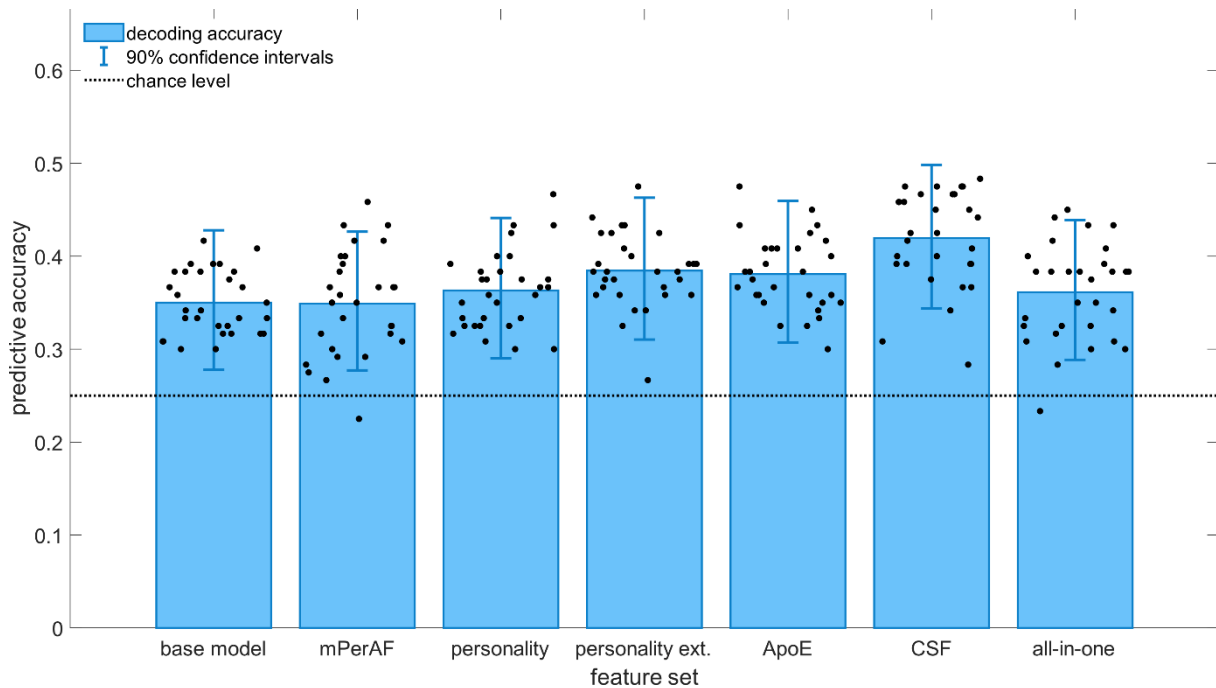
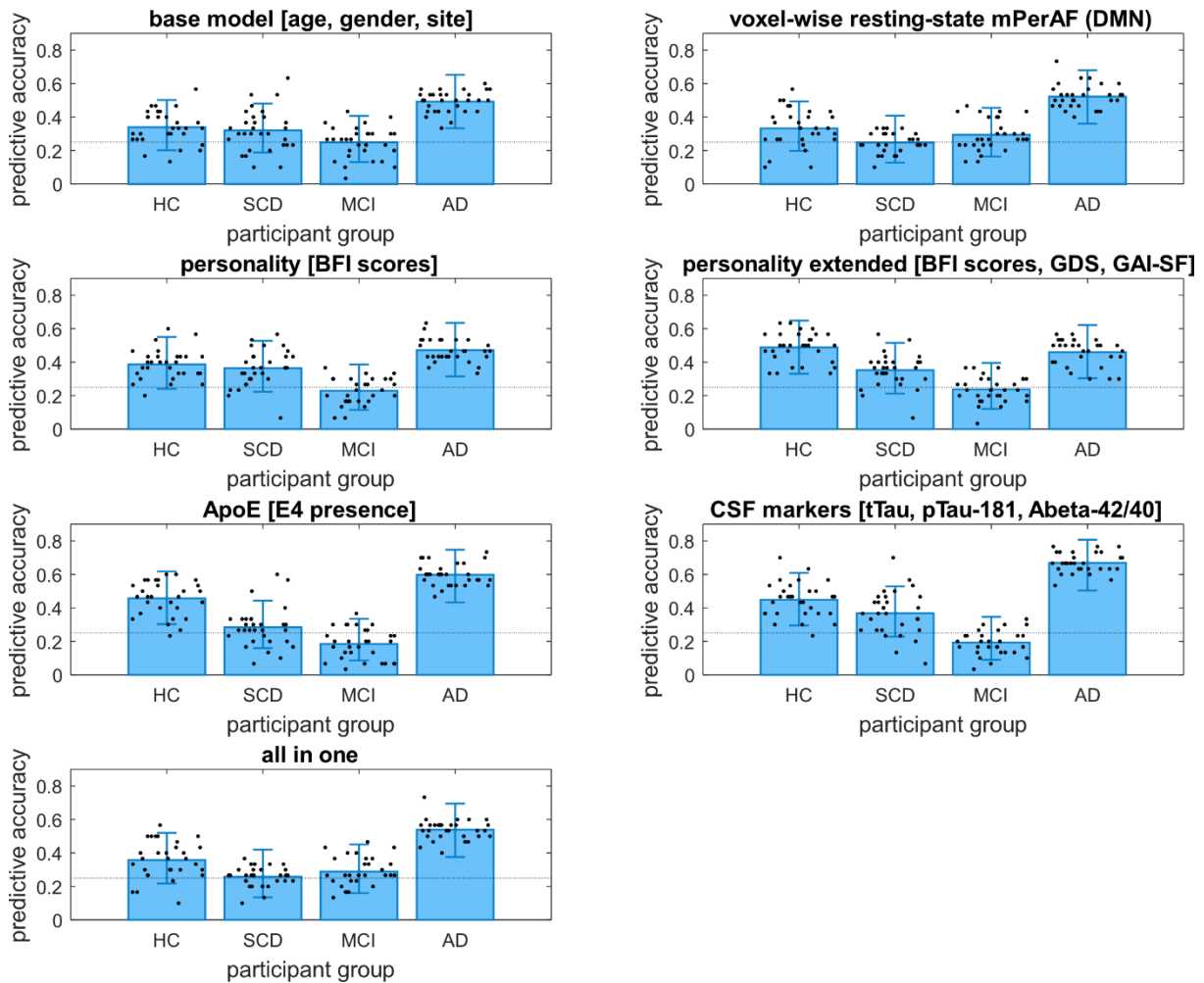


Figure S4. Decoding accuracies for the assessed feature sets with reduced but equal sample size (N = 311).

Table S5. Inferential statistical comparisons of DA between feature sets

CSF only vs	t	p	CI	p adjusted
<b>all-in-one</b>	6.52	<.001	[0.04, 0.07]	<.001
<b>mPerAF</b>	7.67	<.001	[0.05, 0.09]	<.001
<b>personality</b>	5.38	<.001	[0.04, 0.08]	<.001
<b>personality extended</b>	3.00	.003	[0.01, 0.06]	0.003
<b>ApoE</b>	4.19	<.001	[0.02, 0.05]	<.001



**Figure S5.** Class accuracies for the assessed feature sets with reduced but equal sample size for all (N = 311).

## 2. Supplementary Discussion

### 2.1. Collapsing SCD and MCI into an “increased AD risk” group does not improve prediction accuracy for any feature set

No feature set yielded CAs significantly different from chance for the “increased AD risk” group.

A noteworthy difference in prediction results between the variant with smaller but equal sample sizes and the variant with the “increased AD risk” group is that the base model performs poorer within the risk group variant, not achieving prediction accuracy significantly different from chance. This is possibly due to significant age differences between groups.

## **2.2. CSF markers perform significantly better than all other features with smaller sample sizes**

In the main manuscript, we reported that feature sets “personality extended” and “CSF” had almost equal performance regarding overall DA. With smaller sample size, the DA of feature set 7 increased relative to other feature sets. The noteworthy performance in classifying AD is contrasted by CAs for HC, SCD, and MCI not being statistically significantly different from chance. Feature set 4 “personality extended” again yielded top CA for HC, but this time failed to classify AD statistically significantly different from chance.

Moreover, feature set 2 “mPerAF” and the base model now also do not perform significantly above chance anymore. All other feature sets still perform above chance, but more poorly than before. These results reiterate the need for precise definitions of SCD and MCI and their etiology.

Prediction results from the variant with smaller, but equal sample sizes re-emphasized that “CSF” markers and “personality extended” scores likely have complementary value as they yield decent CAs for different participant classes.

## **3. Supplementary References**

- Holm, S. (1979). A Simple Sequentially Rejective Multiple Test Procedure. *Scandinavian Journal of Statistics*, 6(2), 65–70.
- Jessen, F., Amariglio, R. E., Buckley, R. F., van der Flier, W. M., Han, Y., Molinuevo, J. L., Rabin, L., Rentz, D. M., Rodriguez-Gomez, O., Saykin, A. J., Sikkes, S. A. M., Smart, C. M., Wolfsgruber, S., & Wagner, M. (2020). The characterisation of subjective cognitive decline. *The Lancet Neurology*, 19(3), 271–278. [https://doi.org/10.1016/S1474-4422\(19\)30368-0](https://doi.org/10.1016/S1474-4422(19)30368-0)