



## 19 **Abstract**

20 Measurement of COVID-19-attributed mortality is vital for public health policy decisions.  
21 Unlike high-income countries, the magnitude of COVID-19-related mortality is largely unknown  
22 in many low- and middle-income countries due to inadequate COVID-19 testing capacity and a  
23 lack of robust civil registration and vital statistics systems. COVID-19-associated excess  
24 mortality was investigated in an urban setting in Bangladesh using a cemetery-based death  
25 registration dataset. A total of 6,271 deaths (3,790 male and 2,481 female) recorded between  
26 January 2015 and December 2021 were analyzed by using the Bayesian structural time series  
27 model (BSTS). During the pre-COVID-19 period, the average monthly number of deaths was 69,  
28 whereas, during the COVID-19 period, this number significantly increased to 92. Overall,  
29 according to model-based results, during COVID-19 period, the number of deaths increased on  
30 average by 17% (95% CrI: -18%, 57%): males 29% (95 % CrI: -15%, 75%) and 2.9% for  
31 females (95% CrI: -61%, 70%). This first-of-its-kind study in Bangladesh has revealed the  
32 excess mortality due to the COVID-19 pandemic (2020-2021) in an urban community. It appears  
33 that cemetery-based death registration could help track various crises (e.g., COVID-19),  
34 especially when collecting data on the ground is challenging for resource-limited countries.

35

## 36 **Background**

37 Understanding the magnitude of COVID-19-attributed mortality is crucial for public health  
38 policy decisions to reduce mortality and prevent future crises. Unlike high-income countries,  
39 underreporting deaths is a genuine concern for most low- and middle-income countries (LMICs)  
40 due to inadequate COVID-19 testing capacity and a lack of robust civil registration and vital  
41 statistics systems[1]. Consequently, the extent of COVID-19-related mortality is unclear in many  
42 LMICs, including Bangladesh. Excess mortality is a commonly used indicator of the observed  
43 death from any cause in comparison to that anticipated based on historical averages. Using a  
44 cemetery-based death registration dataset, we sought to quantify the magnitude of excess  
45 mortality in an urban community in Bangladesh.

46

## 47 **Methods**

### 48 **Study setting**

49 COVID-19-associated excess mortality was analyzed for Jamalpur town (also known as  
50 pauroshova, one of the 64 district towns in Bangladesh), an urban setting which is located 142  
51 kilometers northwest of the capital city, Dhaka. In the 53.3 km sq study area, more than 180,358  
52 inhabitants (population density ~ 3385/km sq) with an annual growth rate of 1.7% live here  
53 based on 2015 consensus data[2]. Notably, Bangladesh has no national system for registering  
54 deaths and determining their causes. Most deaths occur at home and therefore the cause of death  
55 is primarily unknown. The death certificate issued by the public hospitals remains questionable  
56 due to the lack of a proper medical record-keeping system[3,4]. Since 2010, death registration  
57 could be done directly by visiting a registration office (such as pauroshova). While it is  
58 mandatory to show a death certificate for property succession, claiming a pension and insurance,

59 and nominated bank deposit, families with a lower economic background are not often interested  
60 in making death registration. Because of space constraints and the high land prices in towns,  
61 almost all families prefer public cemeteries to bury their loved ones. On the other hand, in rural  
62 areas, people generally bury the deceased in private cemeteries. Even though people migrate  
63 outside the community for livelihood, they are generally buried in the local community cemetery  
64 upon their death.

65

## 66 **Dataset**

67 We extracted available information (age, sex, and month of demise) of individual death cases  
68 from the pauroshova death registry books. Jamalpur town collects self-reported information on  
69 death cases registered at the existing four Muslim cemeteries and one Hindu cremation place  
70 (supplement). The dataset contained 10,482 deaths (January 2011–December 2021); 6  
71 incomplete records were removed; 1,610 records were excluded from analysis whose age was  
72 under 35 years (since over 96% COVID-19 related official deaths occurred at >35 years)[5],  
73 resulting in 8,866 deaths. Finally, 6,271 deaths (3,790 male and 2,481 female) recorded between  
74 January 2015 and December 2021 were analyzed. . The fatalities were measured as the monthly  
75 count of deaths for any cause (outcome measure). The exposure period (COVID-19) was defined  
76 as March 2020 to December 2021 (COVID-19 period), and the pre-exposure period (pre-  
77 COVID-19 period) was defined as January 2015 to February 2020.

78

## 79 **Statistical analysis**

80 To measure the impact of COVID-19 on mortality, the Bayesian structural time series model was  
81 used in this study, which has been described in detail elsewhere[6]. It is a stochastic state-space

82 model that can incorporate trend, seasonality, and regression components[7]. Using the R, the  
83 point effects (i.e., relative effects =  $[\sum\text{predicted}-\sum\text{observed}]/\sum\text{predicted}$ ) and their 95% credible  
84 intervals (CrIs) were generated by comparing estimated forecasts to observed trends across  
85 40,000 Markov Chain Monte Carlo iterations (10% burn-in period) to measure the effects of  
86 COVID-19. This study was approved by the Institutional Review Board at Biomedical Research  
87 Foundation, Bangladesh (BRF/ERB/2020/E03).

88

## 89 **Results**

90 **Table 1** compares the monthly average number of fatalities before and during the COVID-19  
91 outbreak, overall and individually for male and female. During the pre-COVID-19 period, the  
92 average monthly number of deaths was 69, whereas during the COVID-19 period, this figure  
93 increased by 23 and reached 92. During the COVID-19 period, the average monthly number of  
94 male and female deaths increased significantly by 16 (from 40.9% to 57.0%) and 7 (from 27.6%  
95 to 35.0%), respectively. This suggests that males experienced a greater average monthly death  
96 than women.

97 Figure 1 shows the differences between observed and model predicted deaths (dotted line). There  
98 was a notable rise in month deaths during the COVID-19 period, specific months (e.g., August-  
99 September 2020). The cumulative difference between observed and predicted deaths in the  
100 COVID-19 period shown in Figure 2 indicated an increase in the number of deaths, particularly  
101 among males. The summary model-based results for the full and stratified by gender analyses are  
102 shown in Table 1. Overall, according to model-based results, during COVID-19 period, the  
103 number of deaths increased on average by 17% (95% CrI: -18%, 57%): males 29% (95 % CrI: -  
104 15%, 75%) and 2.9% for females (95% CrI: -61%, 70%). The results suggest that the

105 commencement of the COVID-19 pandemic related to an increase in the number of deaths in the  
106 studied location. Even though the results were not statistically significant, the considerable  
107 increase in deaths during the COVID-19 period may be indicative of an excess of mortality.

108

## 109 **Discussion**

110 This first-of-its-kind study in Bangladesh has revealed the excess mortality in an urban  
111 community due to the COVID-19 pandemic over a period between 2020 and 2021. Based on  
112 household surveys, two prior studies so far published from Bangladesh focused on rural settings.  
113 In one study, all-cause mortality was lower during the early months of the COVID-19 pandemic  
114 ( 2020) as compared to 2019[8], while no excess mortality was reported in another study, except  
115 higher mortality reported among 65 years or older during the first year of the pandemic [9].  
116 Consistent with national sex-specific COVID-19 deaths in Bangladesh, this study also found  
117 excess mortality among males[5]. Novel model-based results on excess mortality were not  
118 statistically different from the null for the entire COVID-19 period, but individual months or  
119 shorter periods had a significant impact. Random fluctuations of observed series, a lengthy  
120 COVID-19 period, and the absence of sufficient control variables may have contributed to the  
121 overall significance of the findings. Our findings are not generalizable to all urban settings in the  
122 country. However, important demographic and socio-economic factors of Jamalpur are  
123 comparable to other 33 district towns (out of 64) in Bangladesh[10]. It appears that cemetery-  
124 based death registration could help track various crises (e.g., COVID-19), especially when  
125 collecting data on the ground is challenging for resource-limited countries.

126

## 127 **Declaration**

128 **Authors' contributions:** MSH conceived the idea. MSH, JRK, ER designed the study. All co-  
129 authors contributed data acquisition, analysis, and interpretation and provided critical feedback

130 **Conflict of interest statements:** We declare that there is no conflict of interest

131 **Role of funding source:** No funding was associated with this work

132 **Ethics committee approval:** This study was approved by the Institutional Review Board at  
133 Biomedical Research Foundation, Bangladesh (BRF/ERB/2020/E03).

134

135

## 136 **References**

137

- 138 [1] Biswas RK, Afiaz A, Huq S. Underreporting COVID-19: The curious case of lower-  
139 income countries. *Epidemiol Infect* 2020. <https://doi.org/10.1017/S0950268820002095>.
- 140 [2] <https://jamalpurpourashava.org/at-a-glance-jamalpur-pourashava/> n.d.  
141 <https://jamalpurpourashava.org/> (accessed July 14, 2022).
- 142 [3] Haider MM, Alam N, Ibn Bashar M, HELLERINGER S. Adult death registration in Matlab,  
143 rural Bangladesh: completeness, correlates, and obstacles. *Genus* 2021;77:1–16.  
144 <https://doi.org/10.1186/S41118-021-00125-7/FIGURES/2>.
- 145 [4] Uddin M, Ashrafi SAA, Azad AK, Chowdhury A, Chowdhury HR, Riley ID, et al.  
146 Improving coverage of civil registration and vital statistics, bangladesh. *Bull World*  
147 *Health Organ* 2019;97:637–41. <https://doi.org/10.2471/BLT.18.219162>.
- 148 [5] WHO. Morbidity and Mortality Weekly Update (MMWU) No. 113 2022.  
149 [https://cdn.who.int/media/docs/default-source/searo/bangladesh/covid-19-who-](https://cdn.who.int/media/docs/default-source/searo/bangladesh/covid-19-who-bangladesh-situation-reports/who_covid-19-update_76_20210809.pdf?sfvrsn=9208a5a_7)  
150 [bangladesh-situation-reports/who\\_covid-19-update\\_76\\_20210809.pdf?sfvrsn=9208a5a\\_7](https://cdn.who.int/media/docs/default-source/searo/bangladesh/covid-19-who-bangladesh-situation-reports/who_covid-19-update_76_20210809.pdf?sfvrsn=9208a5a_7)  
151 (accessed July 5, 2022).
- 152 [6] Brodersen KH, Gallusser F, Koehler J, Remy N, Scott SL. Inferring causal impact using  
153 bayesian structural time-series models. *Ann Appl Stat* 2015;9:247–74.

- 154 <https://doi.org/10.1214/14-AOAS788>.
- 155 [7] Scott SL, Varian HR. Predicting the present with Bayesian structural time series. *Int J*  
156 *Math Model Numer Optim* 2014;5:4–23. <https://doi.org/10.1504/IJMMNO.2014.059942>.
- 157 [8] Barnwal P, Yao Y, Wang Y, Juy NA, Raihan S, Haque MA, et al. Assessment of Excess  
158 Mortality and Household Income in Rural Bangladesh During the COVID-19 Pandemic in  
159 2020. *JAMA Netw Open* 2021;4:e2132777–e2132777.  
160 <https://doi.org/10.1001/JAMANETWORKOPEN.2021.32777>.
- 161 [9] Hanifi SMA, Alam SS, Shuma SS, Reidpath DD. Insights Into Excess Mortality During  
162 the First Months of the COVID-19 Pandemic From a Rural, Demographic Surveillance  
163 Site in Bangladesh. *Front Public Heal* 2021;9:1016.  
164 <https://doi.org/10.3389/FPUBH.2021.622379/BIBTEX>.
- 165 [10] Hossain MB, Hossain MS. Demographic and Socioeconomic Homogeneity among  
166 Districts and District Towns in Bangladesh. *J Biomed Anal* 2019;2:1–11.  
167 <https://doi.org/10.30577/JBA.2019.V2N1.34>.

168

169

## 170 **Figure legends**

171 **Figure 1:** The monthly number of observed and predicted deaths (total, male, and female)  
172 observed (solid line) and predicted (dotted line) time series and 95% credible intervals (blue  
173 areas) according to the Bayesian structural time series.

174

175 **Figure 2:** The cumulative difference between observed and predicted deaths (dotted line) in the  
176 COVID period

177

178

179

180

181

182

183



184 **Table 1.** The difference in the monthly average number of deaths between pre-COVID-19 and  
185 COVID periods, as well as a model-based estimate of the impact of COVID-19.

186

<b>Number of deaths</b>	<b>Pre-COVID (Jan 2015 to Feb 2020)</b>	<b>During COVID (Mar 2020 to Dec 2021)</b>	<b>Difference<sup>1</sup></b>	<b>Relative effect 95% Credible Interval<sup>2</sup></b>
Total	68.5	91.9	23.4*	17% (-18%, 57%)
Male	40.9	57.0	16.1*	29% (-15%, 75%)
Female	27.6	35.0	7.4*	2.9% (-61%, 70%)

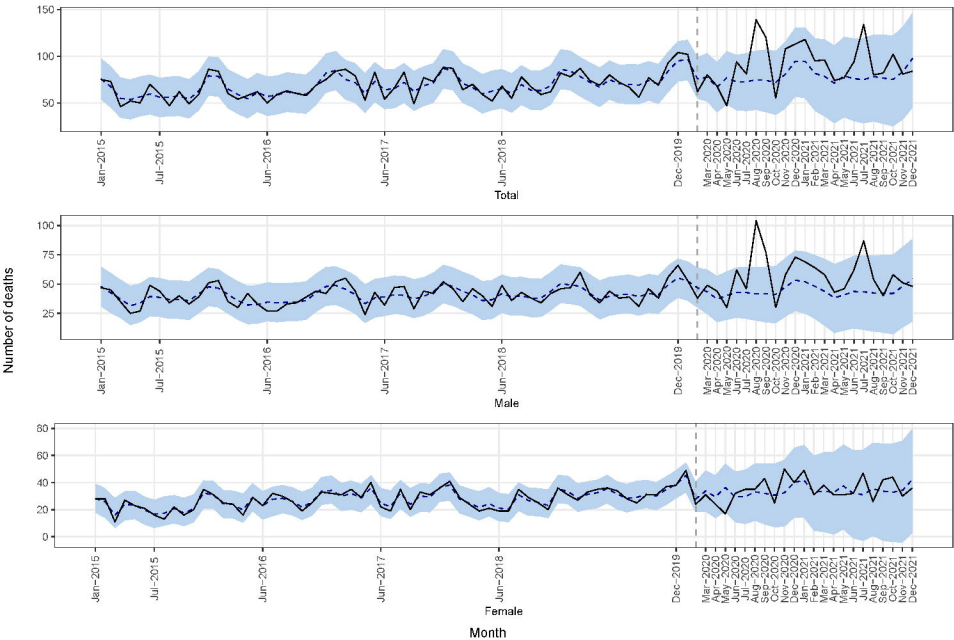
187

188 <sup>1</sup>Difference between the monthly average deaths, <sup>2</sup>BSTS model based results on the impact of COVID-19

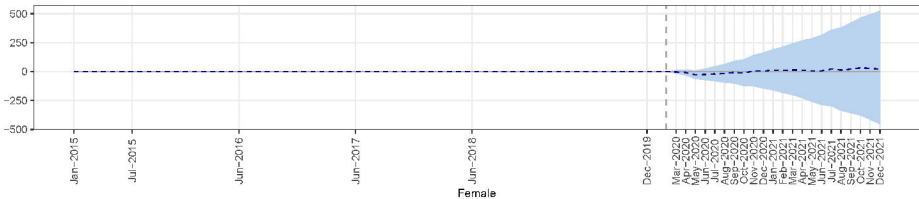
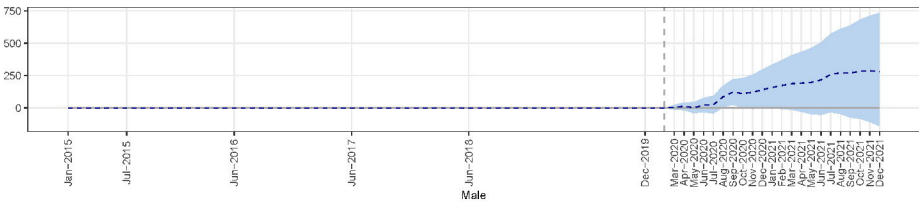
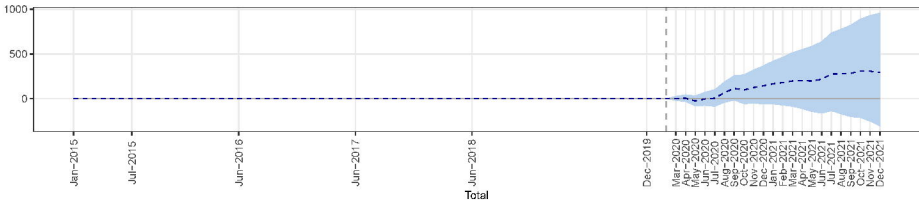
189 \*p<0.001, based on Wilcoxon rank-sum test

190

191



Cumulative difference (observed-predicted) in number of deaths



Month