

1 **Comparative effectiveness of two- and three-dose schedules involving AZD1222**
2 **and BNT162b2 in people with kidney disease: a linked OpenSAFELY and UK**
3 **Renal Registry cohort study**

4
5 The OpenSAFELY Collaborative: Edward PK Parker¹, Elsie MF Horne^{2,3}, William J Hulme⁴, John Tazare¹, Bang
6 Zheng¹, Edward J Carr⁵, Fiona Loud⁶, Susan Lyon⁷, Viyaasan Mahalingasivam¹, Brian MacKenna⁴, Amir
7 Mehrkar⁴, Miranda Scanlon⁸, Shalini Santhakumaran⁹, Retha Steenkamp⁹, Ben Goldacre², Jonathan AC Sterne^{2,3,10},
8 Dorothea Nitsch^{1,9}, Laurie A Tomlinson¹, The LH&W NCS (or CONVALESCENCE) Collaborative
9

10 ¹ London School of Hygiene and Tropical Medicine, Keppel Street, London, WC1E 7HT, UK

11 ² Population Health Sciences, University of Bristol, Oakfield House, Oakfield Grove, Bristol, BS8 2BN, UK

12 ³ NIHR Bristol Biomedical Research Centre, Bristol, UK

13 ⁴ Bennett Institute for Applied Data Science, Nuffield Department of Primary Care Health Sciences, University of
14 Oxford, OX2 6GG, UK

15 ⁵ The Francis Crick Institute, London, NW1 1AT, UK

16 ⁶ Kidney Care UK, Alton, UK

17 ⁷ Patient Council, UK Kidney Association, Bristol, UK

18 ⁸ Kidney Research UK, Peterborough, UK

19 ⁹ UK Renal Registry, Bristol, UK

20 ¹⁰ Health Data Research UK South-West, Bristol, UK
21

22 **Corresponding author:**

23 Edward PK Parker

24 edward.parker@lshtm.ac.uk

25 London School of Hygiene and Tropical Medicine, Keppel Street, London, WC1E 7HT, UK

26 **Abstract**

27

28 **Background:** Kidney disease is a key risk factor for COVID-19-related mortality and
29 suboptimal vaccine response. Optimising vaccination strategies is essential to reduce the
30 disease burden in this vulnerable population.

31

32 **Methods:** With the approval of NHS England, we performed a retrospective cohort study to
33 estimate the comparative effectiveness of schedules involving AZD1222 (AZ; ChAdOx1-S)
34 and BNT162b2 (BNT) among people with kidney disease. Using linked primary care and UK
35 Renal Registry records in the OpenSAFELY-TPP platform, we identified adults with stage 3–
36 5 chronic kidney disease, dialysis recipients, and kidney transplant recipients. We used Cox
37 proportional hazards models to compare COVID-19-related outcomes and non-COVID-19
38 death after two-dose (AZ–AZ vs BNT–BNT) and three-dose (AZ–AZ–BNT vs BNT–BNT–
39 BNT) schedules.

40

41 **Findings:** After two doses, incidence during the Delta wave was higher in AZ–AZ
42 (n=257,580) than BNT–BNT recipients (n=169,205; adjusted hazard ratios [95% CIs] 1.43
43 [1.37–1.50], 1.59 [1.43–1.77], 1.44 [1.12–1.85], and 1.09 [1.02–1.17] for SARS-CoV-2 infection,
44 COVID-19-related hospitalisation, COVID-19-related death, and non-COVID-19 death,
45 respectively). Findings were consistent across disease subgroups, including dialysis and
46 transplant recipients. After three doses, there was little evidence of differences between AZ–
47 AZ–BNT (n=220,330) and BNT–BNT–BNT recipients (n=157,065) for any outcome during a
48 period of Omicron dominance.

49

50 **Interpretation:** Among individuals with moderate-to-severe kidney disease, two doses of
51 BNT conferred stronger protection than AZ against SARS-CoV-2 infection and severe
52 disease. A subsequent BNT dose levelled the playing field, emphasising the value of
53 heterologous RNA doses in vulnerable populations.

54

55 **Funding:** National Core Studies, Wellcome Trust, MRC, and Health Data Research UK.

56

57 **Key words:** COVID-19; chronic kidney disease; NHS England; SARS-CoV-2; vaccination;
58 effectiveness.

59

60 **Research in context**

61

62 **Evidence before this study**

63 We searched Medline for studies published between 1st December 2020 and 7th September
64 2022 using the following term: “(coronavir* or covid* or sars*) and (vaccin* or immunis* or
65 immuniz*) and (kidney or dialysis or h?emodialysis or transplant or renal) and (efficacy or
66 effectiveness)”. We identified studies reporting on the effectiveness of various COVID-19
67 vaccines in individuals with chronic kidney disease (CKD) or end-stage renal disease.
68 Several studies have reported no clear differences in effectiveness against outcomes of
69 varying severity after two doses of BNT162b2 or AZD1222 compared to unvaccinated
70 controls, which is contrary to the significantly higher antibody levels observed after
71 BNT162b2 in immunogenicity studies. One study also showed that a third dose of RNA
72 vaccine restored some protection against the Omicron variant among BNT162b2- and
73 AZD1222-primed individuals, with no clear differences between these groups. This finding
74 is consistent with immunogenicity data suggesting that a third dose of BNT162b2 may
75 reduce the gap in antibody levels observed after two of AZD1222 versus BNT162b2.
76 Notably, we found few studies directly comparing effectiveness in BNT162b2 versus
77 AZD1222 recipients, which reduces biases associated with comparison to a small and
78 potentially unrepresentative group of unvaccinated controls. We also found no studies
79 exploring COVID-19 vaccine effectiveness in kidney disease groups of varying severity
80 (CKD, dialysis, and kidney transplant).

81

82 **Added value of this study**

83 This is the largest study to compare the effectiveness of two- and three-dose regimens
84 involving AZD1222 and BNT162b2 among people with moderate-to-severe kidney disease.
85 We compared effectiveness after two and three doses in 426,780 and 377,395 individuals,
86 respectively, and harnessed unique data linkages between primary care records and UK
87 Renal Registry data to identify people with CKD and end-stage renal disease (including
88 dialysis and kidney transplant recipients) with high accuracy. During the Delta wave of
89 infection, we observed a higher risk of COVID-19-related outcomes of varying severity after
90 two doses of AZD1222 versus BNT162b2, with consistent findings in CKD, dialysis, and
91 transplant subgroups. After a third dose of BNT162b2, AZD1222- and BNT162b2-primed
92 individuals had similar rates of COVID-19-related outcomes during a period of Omicron
93 dominance.

94

95 **Implications of all the available evidence**

96 A growing body of immunogenicity and effectiveness data – including the present study –
97 suggest that two doses of BNT162b2 confers stronger protection than AZD1222 among
98 people with moderate-to-severe kidney disease. However, a third dose of BNT162b2
99 appears to compensate for this immunity deficit, providing equivalent protection in
100 BNT162b2- and AZD1222-primed individuals. Achieving high coverage with additional
101 RNA vaccine doses (whether homologous or heterologous) has the capacity to reduce the
102 burden of disease in this vulnerable population.

103

104
105
106
107
108
109
110
111
112
113
114
115
116
117
118
119
120
121
122
123
124
125
126
127
128
129
130
131
132
133
134
135
136
137
138
139
140
141
142
143
144
145
146
147
148
149
150
151
152
153
154
155
156
157
158
159
160

Background

During the SARS-CoV-2 pandemic, the burden of morbidity and mortality has not been shared equally across society. Social and demographic factors have underpinned stark inequities in SARS-CoV-2 exposure, while clinical factors have shaped the ensuing risk of harm among those infected. Although COVID-19 vaccines have the potential to mitigate these inequities, people with compromised immune systems may fail to mount a protective response to primary or booster doses^{1,2}, leaving them at increased risk of subsequent infection and disease compared with healthy adults^{3,4}.

Kidney disease is a key risk factor for both COVID-19-related mortality and suboptimal COVID-19 vaccine response^{4,5}. Observational studies of vaccine immunogenicity have highlighted possible ways to optimise immunisation strategies in this population. In people receiving haemodialysis, antibody levels are significantly lower following two doses of the vectored vaccine AZD1222 (AZ; ChAdOx1-S) compared with the RNA vaccine BNT162b2 (BNT)^{6,7}. However, a heterologous BNT third dose among AZ-primed individuals (AZ–AZ–BNT) appears to reduce the immunogenicity gap, inducing antibody levels equivalent⁷ or closer^{8,9} to those observed after a homologous three-dose series (BNT–BNT–BNT).

The extent to which these immunogenicity data translate to protection against infection and severe COVID-19 remains uncertain. To address this, we harnessed unique data linkages within the OpenSAFELY-TPP database to estimate the comparative effectiveness of two-dose (AZ–AZ vs BNT–BNT) and three-dose (AZ–AZ–BNT vs BNT–BNT–BNT) schedules among people with kidney disease in England.

Methods

Data sources

All data were linked, stored, and analysed securely within the OpenSAFELY platform <https://opensafely.org/>. OpenSAFELY is a data analytics platform created by our team on behalf of NHS England to address urgent COVID-19 research questions. The dataset analysed within OpenSAFELY-TPP is based on 24 million people currently registered with GP surgeries using TPP SystemOne software. Data include pseudonymised data such as coded diagnoses, medications, and physiological parameters. No free text data are included. All code is shared openly for review and re-use under MIT open license (<https://github.com/opensafely/ckd-coverage-ve>). Detailed pseudonymised patient data is potentially re-identifiable and therefore not shared. Primary care data are linked through OpenSAFELY with other pseudonymised datasets, including COVID-19 testing records via the Second Generation Surveillance System (SGSS), A&E attendance and hospital records via NHS Digital's Hospital Episode Statistics (HES), national death registry records from the Office for National Statistics (ONS), and renal replacement therapy (RRT) status via the UK Renal Registry (UKRR). Vaccination status is directly available within GP records via the National Immunisation Management System.

Study population

We defined separate cohorts for the two- and three-dose analyses. Baseline characteristics were defined as of dose 1 (two-dose cohort) or dose 3 (three-dose cohort), except for age, which was calculated as of 31st March 2021 as per UK Health Security Agency recommendations¹⁰. We assessed potential eligibility among individuals who were at least 16 years of age and had been registered in OpenSAFELY-TPP for at least 3 months before their first COVID-19 vaccine dose.

Each cohort comprised: (i) individuals receiving RRT (dialysis or transplant), as listed within the UKRR as of 31st December 2020; and (ii) individuals with evidence of stage 3–5 chronic kidney disease (CKD) in the absence of RRT. Individuals with CKD were identified based on their most recent serum creatinine measurement in the 2 years preceding baseline.

161 Creatinine levels were converted into estimated glomerular filtration rate (eGFR) using the
162 CKD epidemiology collaboration equation without specification of ethnicity¹¹, and an eGFR
163 of <60 ml/min/1.73 m² used as a threshold for inclusion. To assess CKD severity, we
164 distinguished between stage 3a (eGFR of 45–59 ml/min/1.73 m²), stage 3b (eGFR of 30–44
165 ml/min/1.73 m²), and stage 4–5 CKD (eGFR <30 ml/min/1.73 m²). Individuals with
166 primary care codes suggesting prior dialysis or kidney transplant but absent from the UKRR
167 were excluded given their ambiguous kidney disease status at the point of recruitment.

168
169 Individuals were included in the two-dose cohort if they: (i) had complete data on sex,
170 ethnicity, NHS region, and index of multiple deprivation (IMD); (ii) received AZ–AZ or
171 BNT–BNT; (iii) received their first vaccine dose on or after 4th January 2021 (when both AZ
172 and BNT were in concurrent use); (iv) had a dose 1–2 interval of 8–14 weeks; (v) were not
173 health or social care workers, residents in care or nursing homes, medically housebound, or
174 receiving end-of-life care (given atypical testing and exposure patterns in these groups); (vi)
175 were not aged ≥80 years (given significant vaccination in this age group before AZ was
176 available); (vii) received their second dose on or before 17th October 2021 (ensuring 30 days
177 of potential follow-up); and (viii) had no documented SARS-CoV-2 infection in the 90 days
178 preceding dose 1 or between doses 1 and 2.

179
180 Individuals were included in the three-dose cohort if they fulfilled criteria (i) to (vi) above
181 and received BNT as a third dose between 1st September 2021 (the date on which third
182 primary doses were recommended for immunosuppressed individuals¹²) and 1st March
183 2022. Additionally, individuals were excluded if they had a dose 2–3 interval of <12 weeks
184 or were infected with SARS-CoV-2 between doses 1 and 3 (to mitigate the influence of
185 hybrid immunity). We did not distinguish between third primary and booster doses.

186 187 **Outcomes**

188 We assessed the following post-vaccination outcomes: SARS-CoV-2 infection; COVID-19-
189 related hospitalisation; COVID-19-related death; and non-COVID-19 death (see
190 **Supplementary Table S1** for coding details). For the two-dose cohort, follow-up started on
191 the date of dose 2 and extended until 16th November 2021 (2 months after all individuals
192 became eligible for a third dose¹³). For the three-dose cohort, follow-up started on the date of
193 dose 3 and extended until 31st March 2022 for SARS-CoV-2 infection (the date when free
194 testing for the public came to an end) or 21st May 2022 for other outcomes (2 months after
195 the launch of the spring booster campaign^{14,15}).

196 197 **Potential confounding variables**

198 We defined the following potential confounders in each cohort: age; sex; ethnicity; social
199 deprivation based on IMD quintile; setting (urban, urban conurbation, or rural,); kidney
200 disease subgroup (CKD3a, CKD3b, CKD4–5, dialysis, or transplant); clinical comorbidities
201 that influenced vaccine prioritisation (**Supplementary Table S1**); prior SARS-CoV-2
202 infection; and number of SARS-CoV-2 (0, 1, 2, or 3+) in the 90 days preceding 4th January
203 2021 (two-dose cohort) or 1st September 2021 (three-dose cohort) as an indicator of testing
204 behaviour. After accounting for exclusions relating to incomplete demographic data (see
205 above), there were no missing values as remaining variables were defined by the presence or
206 absence of codes or events.

207 208 **Statistical analysis**

209 Follow-up started on the day of vaccination (dose 2 or 3) and was censored at the earliest of
210 death, deregistration, the administration of a subsequent COVID-19 vaccine dose, 182 days,
211 the end of the study period (as defined above), or the outcome of interest. We used the
212 Kaplan-Meier (KM) method to estimate cumulative incidence and associated 95%
213 confidence intervals (CIs). Risk ratios (RRs) were estimated based on KM estimates,
214 alongside 95% CIs derived from the sum of squares of the log-KM standard errors. We used
215 Cox proportional hazards models to compare effectiveness of AZ–AZ versus BNT–BNT
216 (two-dose cohort) and AZ–AZ–BNT versus BNT–BNT–BNT (three-dose cohort) for each

217 outcome. Hazard ratios (HRs) and 95% CIs were estimated for the whole study period and
218 during the following time periods: days 1–14, 14–70, 71–126, and 127–182.
219

220 For each outcome, we fitted: (i) unadjusted models; (ii) models stratified by NHS region and
221 adjusting for calendar-time effects by including a natural cubic spline for the date of
222 vaccination with two knots at the first and second tertiles; and (iii) fully adjusted models
223 additionally adjusting for the demographic and clinical confounders described above (with
224 age as a quadratic polynomial). Fully adjusted models for the overall study period were
225 explored in the following subgroups: CKD3, CKD4–5, kidney transplant, dialysis, and any
226 RRT (combining transplant and dialysis). To avoid issues with model convergence, we
227 excluded binary covariates if cross-tabulating the variable with vaccine group yielded any
228 cell with fewer than three outcome events. For categorical variables with more than two
229 levels, we merged categories until all levels fulfilled these cross-tabulation criteria or one
230 level remained, in which case the variable was excluded. Final model structures are
231 summarised in **Supplementary Tables S2 and S3**.
232

233 As an alternative to confounder adjustment via regression, we conducted a sensitivity
234 analysis in which vaccination groups were matched 1:1 based on: age (within 3 years); date
235 of vaccination (within 3 days); date of preceding dose (within 7 and 14 days for the two- and
236 three-dose cohorts, respectively); sex; IMD quintile; NHS region; kidney disease subgroup;
237 classification as clinically extremely vulnerable; prior SARS-CoV-2 infection; and the
238 presence of any indicator of immunosuppression (recent immunosuppressive therapy,
239 permanent immunosuppression, asplenia, haematologic malignancy, or transplant).
240

241 In compliance with re-identification minimisation requirements for OpenSAFELY, we
242 rounded any reported counts to the nearest 5, redacted non-zero counts of ≤ 10 , and delayed
243 KM steps until ≥ 5 events had occurred.
244

245 **Patient and public involvement**

246 People living with kidney disease were among the team that planned this work and
247 reviewed the manuscript. The work will be shared through involvement of the team with
248 kidney charities and other organisations.
249

250 **Role of the funding source**

251 The funders of the study had no role in the study design, data collection, data analysis, data
252 interpretation, or writing of the report.
253

254 **Results**

255 **Study population**

256 426,785 individuals with kidney disease were eligible for the two-dose cohort
257 (**Supplementary Table S4**), of whom 257,580 (60%) received AZ–AZ and 169,205 (40%)
258 received BNT–BNT. Baseline clinical and demographic characteristics were similar across
259 the vaccine groups (**Table 1**). The most common kidney disease subgroup was CKD3a (76%
260 vs 75% among AZ–AZ vs BNT–BNT recipients, respectively), followed by CKD3b (17% vs
261 18%), CKD4–5 (4% vs 4%), transplant (2% vs 2%), and dialysis (1% vs 1%).
262
263

264 377,395 individuals were eligible for the three-dose cohort, of whom 222,330 (58%) received
265 AZ–AZ–BNT and 157,065 (42%) received BNT–BNT–BNT. Again, baseline clinical and
266 demographic characteristics were similar across vaccine groups (**Supplementary Table S5**).
267 When stratified by kidney disease subgroup, baseline characteristics remained similar across
268 vaccine groups (**Supplementary Tables S6 and S7**). RRT recipients were notably younger
269 than people with CKD and had a higher prevalence of immunosuppression, non-White
270 ethnicity, and prior SARS-CoV-2 infection.
271
272
273

274 **Comparative effectiveness after two doses**

275 Eligible individuals began to receive their second doses in March 2021, with follow-up
276 spanning the Delta wave of SARS-CoV-2 up to the analysis cut-off of 16th November 2021
277 (**Supplementary Figure S1A**). There were a total of 10,405 SARS-CoV-2 infections, 1,660
278 COVID-19-related hospitalisations, 305 COVID-19-related deaths, and 4,045 non-COVID-19
279 deaths across a median follow-up time of 182 (interquartile range [IQR] 182–182) days for
280 each outcome (**Figure 1**).

281

282 Incidence rates and HRs are summarised in **Figures 1–3** and **Supplementary Table S8**.

283 Across the overall follow-up period, SARS-CoV-2 infections occurred at a rate of 58.7 per
284 1000 person-years in AZ–AZ recipients and 37.1 per 1000 person-years in BNT–BNT
285 recipients (fully adjusted HR [95% CI] of 1.43 [1.37–1.50]). HRs were similar across
286 modelling strategies, including in the matched sub-cohort (**Supplementary Table S8**). When
287 stratified by time period, discrepancies between AZ–AZ and BNT–BNT recipients were
288 absent from days 1–14 (when few cases occurred), but consistent across all subsequent time
289 periods (**Figure 3**).

290

291 Similar discrepancies between AZ–AZ and BNT–BNT recipients were observed for more
292 severe outcomes. Overall incidence rates for COVID-19-related hospitalisation were 9.4 per
293 1000 person-years in AZ–AZ recipients and 5.7 per 1000 person-years in BNT–BNT
294 recipients (fully adjusted HR 1.59 [1.43–1.77]). COVID-19-related deaths occurred at a rate of
295 1.7 per 1000 person-years in AZ–AZ recipients and 1.1 per 1000 person-years in BNT–BNT
296 recipients (fully adjusted HR 1.44 [1.12–1.85]). Where event counts were sufficient to enable
297 estimation, discrepancies for both outcomes were consistent across time periods and
298 modelling strategies, including in the matched sub-cohort (**Supplementary Table S8**). Non-
299 COVID-19 deaths occurred at a marginally higher rate in AZ–AZ than BNT–BNT recipients
300 (fully adjusted HR 1.09 [1.02–1.16]).

301

302 COVID-19-related outcomes were consistently more common in RRT recipients than people
303 with CKD3 (**Supplementary Table S9**), with intermediate incidence among people with
304 CKD4–5. For SARS-CoV-2 infection and COVID-19-related hospitalisation, comparative
305 effectiveness estimates were highly consistent across kidney disease subgroups, including
306 transplant and dialysis recipients (HRs of 1.2–1.7 in favour of BNT–BNT; **Figure 2**).

307 Subgroup-specific estimates for COVID-19-related deaths were generally non-significant
308 (i.e., CIs crossed 1), albeit constrained by low event counts in individual subgroups. The
309 discrepancy in non-COVID-19 deaths observed for the overall cohort appears to be driven
310 by individuals with CKD3 (fully adjusted HR 1.11 [1.03–1.19]); no significant difference was
311 observed for people with CKD4–5 or in RRT recipients (in contrast to the significant
312 discrepancies in COVID-19-related outcomes in these subgroups).

313

314 **Comparative effectiveness after BNT162b2 third dose**

315 Follow-up for the three-dose cohort spanned periods of Delta and Omicron dominance
316 between September 2021 and May 2022 (**Supplementary Figure S1B**). There were 27,320
317 SARS-CoV-2 infections, 3,360 COVID-19-related hospitalisations, 325 COVID-19-related
318 deaths, and 3,420 non-COVID-19 deaths across a median follow-up time of 146 [IQR 127–
319 160], 182 [170–182], 182 [170–182], and 182 [170–182] days, respectively (**Figure 1**). A total of
320 25,105 (92%) SARS-CoV-2 infections occurred on or after 15th December 2021, when Omicron
321 became the dominant variant in England. The proportion of SARS-CoV-2 infections
322 occurring during the Omicron era rose across time periods from 330/1,535 (21%) in days 1–
323 14 to 6,940/7,915 (88%) in days 15–70 and >99% thereafter.

324

325 Full model outputs for the three-dose cohort are provided in **Supplementary Table S10**.

326 Across the overall follow-up period, SARS-CoV-2 infections occurred at a similar rate in
327 AZ–AZ–BNT versus BNT–BNT–BNT recipients (156.2 vs 166.4 per 1000 person-years,
328 respectively; fully adjusted HR 0.96 [0.93–0.98]; **Figures 1** and **2**). When broken down by
329 time period, infections initially occurred at a higher rate in AZ–AZ–BNT recipients (fully
330 adjusted HRs of 1.25 [1.13–1.39] and 1.06 [1.01–1.11] for days 1–14 and 15–70, respectively),

331 while the inverse was true from day 71 onwards, resulting in approximate parity across the
332 overall study period. Findings were similar across modelling strategies, supporting
333 equivalent protection for AZ–AZ–BNT versus BNT–BNT–BNT across the study period (e.g.,
334 HRs of 0.98 [0.96–1.02] for the matched sub-cohort; **Supplementary Table S10**).

335
336 COVID-19-related hospitalisations occurred at a rate of 19.1 per 1000 person-years in AZ–
337 AZ–BNT recipients and 19.0 per 1000 person-years in BNT–BNT–BNT recipients (fully
338 adjusted HR 1.01 [0.95–1.09]). As observed for SARS-CoV-2 infection, hospitalisations were
339 initially more common among AZ–AZ–BNT recipients, but reached parity across the overall
340 study period (**Figures 1 and 3**). COVID-19-related deaths occurred at a rate of 1.9 per 1000
341 person-years in AZ–AZ–BNT recipients and 1.8 per 1000 person-years in BNT–BNT–BNT
342 recipients (fully adjusted HR 1.15 [0.92–1.45]). Likewise, non-COVID-19 deaths occurred at a
343 similar rate across the two vaccine groups (fully adjusted HR 0.97 [0.90–1.04]). When
344 analyses were stratified by kidney disease subgroup, we observed no clinically important
345 differences in event rates between vaccine groups for any outcome in any subgroup (**Figure**
346 **2 and Supplementary Table S11**), including transplant and dialysis recipients.

347 348 349 **Discussion**

350 Optimising the use of available COVID-19 vaccines among people with kidney disease is
351 crucial to reduce the burden of morbidity and mortality in this vulnerable population. The
352 present study suggests that a two-dose series of BNT conferred stronger protection than AZ
353 against SARS-CoV-2 infection, COVID-19-related hospitalisation, and COVID-19-related
354 death among people with kidney disease in England during the Delta wave of the
355 pandemic. These findings were consistent across CKD3, CKD4–5, transplant and dialysis
356 subgroups. By contrast, after administration of BNT as a third dose, AZ- and BNT-primed
357 individuals exhibited similar risks of COVID-19 during a period dominated by the Omicron
358 variant.

359
360 Our findings are consistent with previous immunology studies that reported higher
361 antibody levels following BNT–BNT versus AZ–AZ^{16–18}, including studies in dialysis and
362 kidney transplant recipients^{6,19}. Higher effectiveness for BNT–BNT versus AZ–AZ has also
363 been reported during the Delta wave in study populations not restricted to individuals with
364 kidney disease^{20,21}. One study of solid organ transplant recipients in England showed no
365 reduction in SARS-CoV-2 infection rates relative to unvaccinated individuals following AZ–
366 AZ or BNT–BNT, and a reduction in post-infection mortality for AZ–AZ but not BNT–
367 BNT²². In addition, previous cohort studies focusing on people receiving haemodialysis have
368 documented no clear differences in effectiveness or post-infection progression between
369 BNT–BNT and AZ–AZ^{8,23}. By contrast, we found that people receiving RRT (dialysis or
370 kidney transplant) were less likely to experience SARS-CoV-2 infection and COVID-19-
371 related hospitalisation following BNT–BNT versus AZ–AZ. In contrast to previous studies,
372 we limited enrolment to periods of concomitant AZ and BNT usage. We also harnessed
373 primary care data linkages to identify detailed comorbidity data and reduce confounding of
374 comparative effectiveness estimates.

375
376 The administration of BNT as a third dose appeared to compensate for the discrepancies in
377 protection between AZ- and BNT-primed individuals. This finding is consistent with
378 observational and clinical studies of third-dose immunogenicity in healthy adults^{16,24} and
379 individuals with kidney disease^{7,9,25}, as well as vaccine effectiveness data from the general
380 population²⁶. One previous study explored short-term vaccine effectiveness of BNT as a
381 third dose following AZ or BNT priming among haemodialysis recipients, reporting
382 increased protection against Omicron infection for boosted compared with unboosted
383 individuals and no significant differences according to primary vaccine group²⁷. We show
384 the equivalent effectiveness of AZ–AZ–BNT versus BNT–BNT–BNT to persist for up to 182
385 days against infection, COVID-19-related hospitalisation, and COVID-19-related death.
386 Interestingly, the higher rates of SARS-CoV-2 infection and COVID-19-related

387 hospitalisation observed after AZ–AZ versus BNT–BNT persisted for days 1–14 after the
388 third dose of BNT, consistent with a lag of 1–2 weeks while the additional dose takes effect.
389

390 Our study is strengthened by the scale and representativeness of the OpenSAFELY-TPP
391 database²⁸, offering the statistical power to explore endpoints such as COVID-19-related
392 hospitalisation and death. The unique use of a gold-standard registry of people receiving
393 treatment for end-stage kidney disease (the UKRR) enabled us to reduce misclassification of
394 treatment modality (e.g. ~65% of the kidney transplant subgroup in this study also had a
395 prior dialysis code in their primary care record) and provided a valuable opportunity to
396 audit vaccine implementation and performance within this high-risk population. The
397 integration of UKRR data within OpenSAFELY allows novel linkages to be made with
398 primary care and COVID-19-related outcome data, forming the key foundation for the
399 present analysis.
400

401 Given the higher rates of COVID-19-related outcomes following AZ–AZ than BNT–BNT, we
402 cannot rule out the potential influence of selection bias in the three-dose cohort. To mitigate
403 the potential influence of hybrid immunity (which would have been more common in AZ-
404 primed individuals), we opted to exclude individuals if they had any evidence of SARS-
405 CoV-2 infection between doses 1 and 3. The resulting cohort may therefore be
406 unrepresentative of the initial population of AZ–AZ recipients, introducing a bias towards
407 individuals who responded more robustly to the two-dose series or had a lower exposure
408 risk post-vaccination. The phased vaccine roll-out in England also imposed constraints on
409 our analyses. Individuals over 80 years of age, many of whom would have been eligible for
410 this study, were excluded given that BNT had been widely distributed to this age group
411 before AZ became available. Despite careful measures to control for confounding, residual
412 biases may have contributed to the observed discrepancies between vaccine groups. Among
413 people with CKD3, deaths from causes other than COVID-19 were more common in AZ–AZ
414 than BNT–BNT recipients, potentially reflecting greater underlying frailty in this population
415 that was not captured by the clinical covariates (e.g. reflecting easier transport of AZ to
416 individuals unable to attend vaccination centres in person). However, this discrepancy was
417 much smaller than that observed for COVID-19-related outcomes and was not apparent in
418 people with CKD4–5 or in RRT recipients.
419

420 Overall, our study serves as an important demonstration of the value of heterologous BNT
421 booster doses (and likely heterologous RNA vaccine booster doses more broadly) in
422 vulnerable populations, suggesting these doses have the capacity to close the gap in
423 immunity observed after prior doses. In settings such as the UK, RNA vaccines have been
424 offered to vulnerable populations across multiple booster campaigns. However, targeted
425 measures to improve the uptake of these doses may be beneficial, particularly in non-White
426 ethnic groups and in deprived settings that have been persistently linked with lower
427 COVID-19 vaccine coverage^{29,30}. Our findings also highlight potential ways to optimise
428 vaccination strategies in countries where RNA vaccines make up a portion of the COVID-19
429 vaccine supply. In particular, administering available RNA vaccines as heterologous second
430 or third doses in high-risk populations might offer greater protection per dose than offering
431 multiple RNA doses to unvaccinated individuals.
432

433 **Acknowledgements**

434 We are very grateful for all the support received from the TPP Technical Operations team
435 throughout this work, and for generous assistance from the information governance and
436 database teams at NHS England/NHS Transformation Directorate.
437

438 **Contributors**

439 Conceptualisation: EPKP, FL, SL, DN, and LAT; Methodology: EPKP, EMFH, WJH, JT, BZ,
440 BG, JACS, DN, and LAT; Software: EPKP, EMFH, and WJH; Formal analysis, EPKP and
441 EMFH; Data curation: AM, SS, RS, BG, and DN; Writing—original draft, EPKP; Writing—
442 review & editing, EMFH, WJH, EJC, FL, SL, VM, BM, MS, SS, RS, DN, and LAT;

443 Visualisation, EPKP and WJH; Supervision, DN and LAT; Project administration: EPKP,
444 AM, DN, and LAT; Funding acquisition, EPKP, BG, DN, and LAT.

445 **Funding**

447 This work was jointly funded by the Wellcome Trust (222097/Z/20/Z); MRC
448 (MR/V015757/1, MC_PC-20059, MR/W016729/1); NIHR (NIHR135559, COV-LT2-0073),
449 and Health Data Research UK (HDRUK2021.000, 2021.0157). EPKP received funding from
450 the UKRI COVID-19 Longitudinal Health and Wellbeing National Core Study (Phase 1
451 LHW-NCS, MC_PC-20059) through a secondment scheme. The views expressed are those of
452 the authors and not necessarily those of the NIHR, NHS England, UK Health Security
453 Agency or the Department of Health and Social Care. Funders had no role in the study
454 design, collection, analysis, and interpretation of data; in the writing of the report; and in the
455 decision to submit the article for publication.

456 **Declaration of interests**

458 BG's work on better use of data in healthcare more broadly is currently funded in part by:
459 the Bennett Foundation, the Wellcome Trust, NIHR Oxford Biomedical Research Centre,
460 NIHR Applied Research Collaboration Oxford and Thames Valley, the Mohn-Westlake
461 Foundation; all Bennett Institute staff are supported by BG's grants on this work. BG is a
462 Non-Executive Director at NHS Digital. The authors disclose no other competing interests.

463 **Ethical approval**

465 This study was approved by the Health Research Authority (REC reference 20/LO/0651)
466 and by the London School of Hygiene & Tropical Medicine's Ethics Board (reference 21863).

467 **Information governance**

469 NHS England is the data controller for OpenSAFELY-TPP; TPP is the data processor; all
470 study authors using OpenSAFELY have the approval of NHS England. This implementation
471 of OpenSAFELY is hosted within the TPP environment which is accredited to the ISO 27001
472 information security standard and is NHS IG Toolkit compliant. Patient data has been
473 pseudonymised for analysis and linkage using industry standard cryptographic hashing
474 techniques; all pseudonymised datasets transmitted for linkage onto OpenSAFELY are
475 encrypted; access to the platform is via a virtual private network (VPN) connection,
476 restricted to a small group of researchers; the researchers hold contracts with NHS England
477 and only access the platform to initiate database queries and statistical models; all database
478 activity is logged; only aggregate statistical outputs leave the platform environment
479 following best practice for anonymisation of results such as statistical disclosure control for
480 low cell counts.

482 The OpenSAFELY research platform adheres to the obligations of the UK General Data
483 Protection Regulation (GDPR) and the Data Protection Act 2018. In March 2020, the
484 Secretary of State for Health and Social Care used powers under the UK Health Service
485 (Control of Patient Information) Regulations 2002 (COPI) to require organisations to process
486 confidential patient information for the purposes of protecting public health, providing
487 healthcare services to the public and monitoring and managing the COVID-19 outbreak and
488 incidents of exposure; this sets aside the requirement for patient consent.

489
490 Taken together, these provide the legal bases to link patient datasets on the OpenSAFELY
491 platform. GP practices, from which the primary care data are obtained, are required to share
492 relevant health information to support the public health response to the pandemic, and have
493 been informed of the OpenSAFELY analytics platform.

495 This project includes data from the UKRRR derived from patient-level information collected
496 by the NHS as part of the care and support of kidney patients. We thank all kidney patients
497 and kidney centres involved. The data are collated, maintained, and quality assured by the
498 UKRRR, which is part of the UK Kidney Association. Access to the data was facilitated by the
499 UKRRR's Data Release Group after consultation with the UK Kidney Association Patient

500 Council. UKRR data are used within OpenSAFELY to address a limited number of critical
501 audit and service delivery questions related to the impact of COVID-19 on patients with
502 kidney disease.

503

504 **Data sharing**

505 Detailed pseudonymised patient data is potentially re-identifiable and therefore not shared.
506 Access to the underlying identifiable and potentially re-identifiable pseudonymised
507 electronic health record data is tightly governed by various legislative and regulatory
508 frameworks, and restricted by best practice. The data in OpenSAFELY is drawn from
509 General Practice data across England where TPP is the data processor. TPP developers
510 initiate an automated process to create pseudonymised records in the core OpenSAFELY
511 database, which are copies of key structured data tables in the identifiable records. These
512 pseudonymised records are linked onto key external data resources that have also been
513 pseudonymised via SHA-512 one-way hashing of NHS numbers using a shared salt. Bennett
514 Institute for Applied Data Science developers and PIs holding contracts with NHS England
515 have access to the OpenSAFELY pseudonymised data tables as needed to develop the
516 OpenSAFELY tools. These tools in turn enable researchers with OpenSAFELY data access
517 agreements to write and execute code for data management and data analysis without direct
518 access to the underlying raw pseudonymised patient data, and to review the outputs of this
519 code. All code for the full data management pipeline – from raw data to completed results
520 for this analysis – and for the OpenSAFELY platform as a whole is available for review at
521 github.com/OpenSAFELY.

522

523 **Code availability**

524 Data management was performed using Python, with analysis carried out using R 4.0.2.
525 Code for data management and analysis, as well as codelists, are archived online
526 (<https://github.com/opensafely/ckd-coverage-ve>).

527

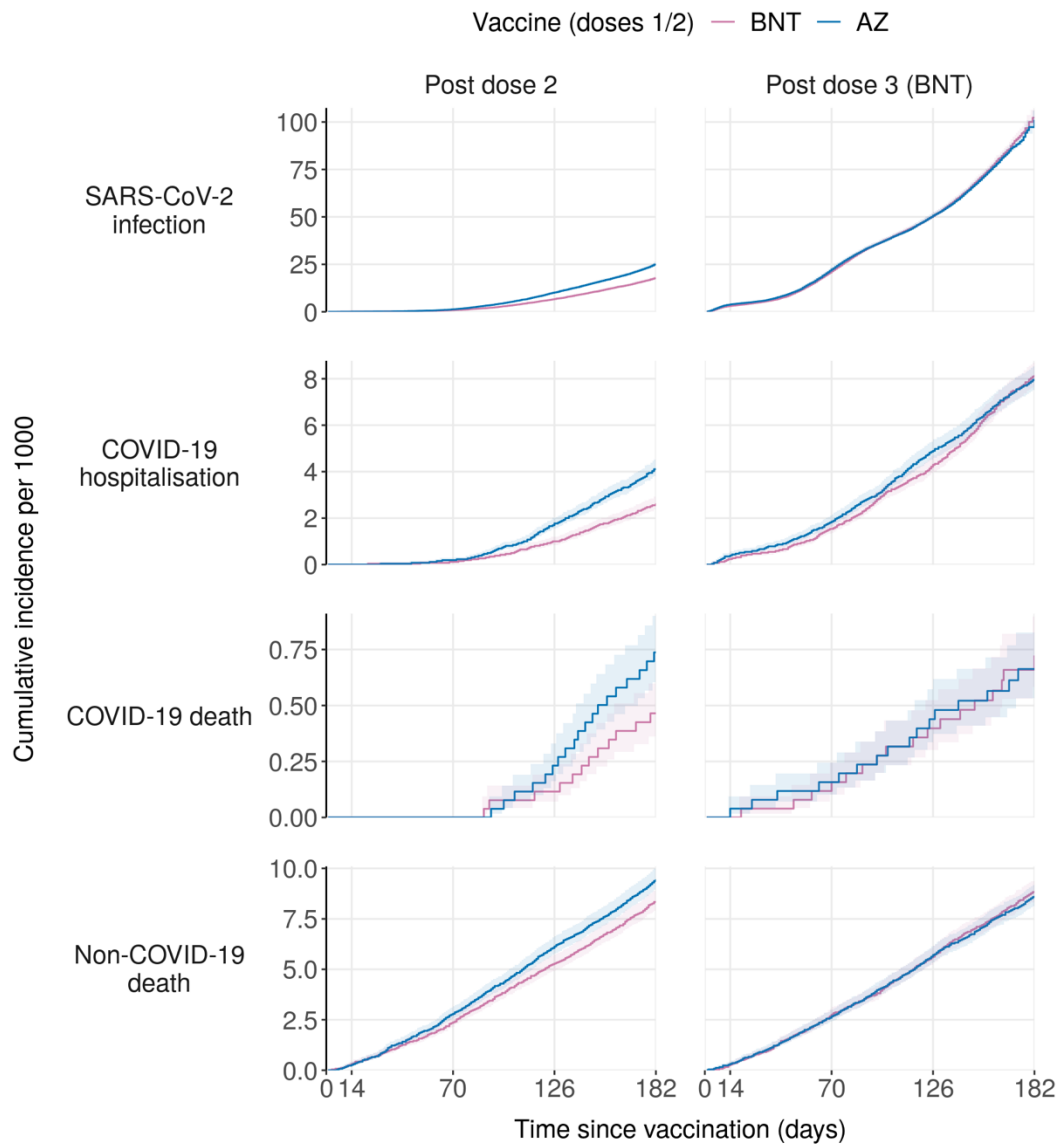
528

Table 1. Baseline characteristics of two-dose vaccination cohort.

Characteristic	Unmatched		Matched	
	AZ-AZ N = 257,580	BNT-BNT N = 169,205	AZ-AZ N = 130,765	BNT-BNT N = 130,65
Age				
16-64	54,330 (21.1%)	29,485 (17.4%)	15,040 (11.5%)	18,015 (13.8%)
65-69	41,890 (16.3%)	21,740 (12.8%)	19,120 (14.6%)	19,030 (14.6%)
70-74	80,215 (31.1%)	45,125 (26.7%)	43,710 (33.4%)	39,420 (30.1%)
75-79	81,150 (31.5%)	72,855 (43.1%)	52,895 (40.5%)	54,300 (41.5%)
Sex				
Female	136,300 (52.9%)	89,095 (52.7%)	69,475 (53.1%)	69,475 (53.1%)
Male	121,280 (47.1%)	80,110 (47.3%)	61,295 (46.9%)	61,295 (46.9%)
Ethnicity				
White	240,905 (93.5%)	159,055 (94.0%)	124,655 (95.3%)	124,810 (95.4%)
Black	4,675 (1.8%)	2,535 (1.5%)	1,330 (1.0%)	1,370 (1.0%)
South Asian	8,825 (3.4%)	5,685 (3.4%)	3,555 (2.7%)	3,360 (2.6%)
Mixed	1,370 (0.5%)	835 (0.5%)	475 (0.4%)	530 (0.4%)
Other	1,805 (0.7%)	1,095 (0.6%)	750 (0.6%)	695 (0.5%)
Index of multiple deprivation quintile				
1 most deprived	43,860 (17.0%)	27,650 (16.3%)	20,270 (15.5%)	20,270 (15.5%)
2	49,590 (19.3%)	32,590 (19.3%)	24,695 (18.9%)	24,695 (18.9%)
3	58,295 (22.6%)	38,860 (23.0%)	30,420 (23.3%)	30,420 (23.3%)
4	55,655 (21.6%)	36,980 (21.9%)	29,130 (22.3%)	29,130 (22.3%)
5 least deprived	50,175 (19.5%)	33,120 (19.6%)	26,250 (20.1%)	26,250 (20.1%)
Setting				
Urban city or town	138,500 (53.8%)	90,055 (53.2%)	71,810 (54.9%)	70,565 (54.0%)
Urban conurbation	50,345 (19.5%)	33,035 (19.5%)	23,815 (18.2%)	23,345 (17.9%)
Rural	68,735 (26.7%)	46,115 (27.3%)	35,145 (26.9%)	36,855 (28.2%)
Kidney disease				
CKD3a	195,125 (75.8%)	126,335 (74.7%)	102,350 (78.3%)	102,350 (78.3%)
CKD3b	44,255 (17.2%)	30,630 (18.1%)	22,365 (17.1%)	22,365 (17.1%)
CKD4-5	10,325 (4.0%)	6,985 (4.1%)	3,825 (2.9%)	3,825 (2.9%)
RRT (dialysis)	2,335 (0.9%)	1,870 (1.1%)	505 (0.4%)	505 (0.4%)
RRT (transplant)	5,540 (2.2%)	3,385 (2.0%)	1,720 (1.3%)	1,720 (1.3%)
Primary care coding of kidney disease				
CKD3-5	137,395 (53.3%)	96,025 (56.8%)	72,400 (55.4%)	73,350 (56.1%)
Dialysis code	5,470 (2.1%)	3,655 (2.2%)	1,520 (1.2%)	1,525 (1.2%)
Kidney transplant code	5,800 (2.3%)	3,585 (2.1%)	1,740 (1.3%)	1,725 (1.3%)
Morbidities				
Immunosuppression	16,155 (6.3%)	10,885 (6.4%)	6,345 (4.9%)	6,360 (4.9%)
Severe obesity	15,815 (6.1%)	10,165 (6.0%)	7,665 (5.9%)	7,760 (5.9%)
Diabetes	70,690 (27.4%)	47,975 (28.4%)	37,580 (28.7%)	36,390 (27.8%)
Chronic respiratory disease (inc. asthma)	27,565 (10.7%)	18,585 (11.0%)	14,485 (11.1%)	14,010 (10.7%)
Chronic heart disease	88,375 (34.3%)	61,725 (36.5%)	48,160 (36.8%)	47,685 (36.5%)
Chronic liver disease	11,165 (4.3%)	7,165 (4.2%)	5,595 (4.3%)	5,350 (4.1%)
Asplenia	2,490 (1.0%)	1,580 (0.9%)	985 (0.8%)	930 (0.7%)
Haematologic cancer	4,675 (1.8%)	3,355 (2.0%)	1,985 (1.5%)	1,970 (1.5%)
Organ transplant (non-kidney)	960 (0.4%)	525 (0.3%)	290 (0.2%)	260 (0.2%)
Chronic neurological disease	26,335 (10.2%)	17,920 (10.6%)	14,390 (11.0%)	13,775 (10.5%)
Learning disability	1,140 (0.4%)	605 (0.4%)	375 (0.3%)	400 (0.3%)
Severe mental illness	3,785 (1.5%)	2,135 (1.3%)	1,650 (1.3%)	1,650 (1.2%)
Clinically extremely vulnerable	48,735 (18.9%)	32,475 (19.2%)	20,485 (15.7%)	20,485 (15.7%)
Prior SARS-CoV-2 infection	3,880 (1.5%)	2,235 (1.3%)	565 (0.4%)	565 (0.4%)
No. of SARS-CoV-2 tests in 90-day pre-vaccination window				
0	221,940 (86.2%)	145,815 (86.2%)	114,135 (87.3%)	114,665 (87.7%)
1	22,910 (8.9%)	15,020 (8.9%)	11,010 (8.4%)	10,985 (8.4%)
2	6,095 (2.4%)	4,005 (2.4%)	2,845 (2.2%)	2,735 (2.1%)
3+	6,630 (2.6%)	4,360 (2.6%)	2,780 (2.1%)	2,380 (1.8%)
Region				
East of England	55,955 (21.7%)	38,525 (22.8%)	28,340 (21.7%)	28,340 (21.7%)
Midlands	62,190 (24.1%)	40,340 (23.8%)	33,535 (25.6%)	33,535 (25.6%)
London	5,590 (2.2%)	5,715 (3.4%)	2,650 (2.0%)	2,650 (2.0%)
North East and Yorkshire	48,920 (19.0%)	30,425 (18.0%)	23,490 (18.0%)	23,490 (18.0%)
North West	24,590 (9.5%)	14,535 (8.6%)	11,005 (8.4%)	11,005 (8.4%)
South East	13,740 (5.3%)	9,020 (5.3%)	6,540 (5.0%)	6,540 (5.0%)
South West	46,600 (18.1%)	30,640 (18.1%)	25,205 (19.3%)	25,205 (19.3%)
JCVI priority group				
3 (75+)	81,150 (31.5%)	72,855 (43.1%)	52,895 (40.5%)	54,300 (41.5%)
4 (70+ or clinically extremely vulnerable)	103,575 (40.2%)	58,180 (34.4%)	50,920 (38.9%)	46,700 (35.7%)
5 (65+)	34,040 (13.2%)	17,635 (10.4%)	16,195 (12.4%)	16,095 (12.3%)
6 (16-65 and clinically vulnerable)	38,820 (15.1%)	20,535 (12.1%)	10,755 (8.2%)	13,665 (10.5%)

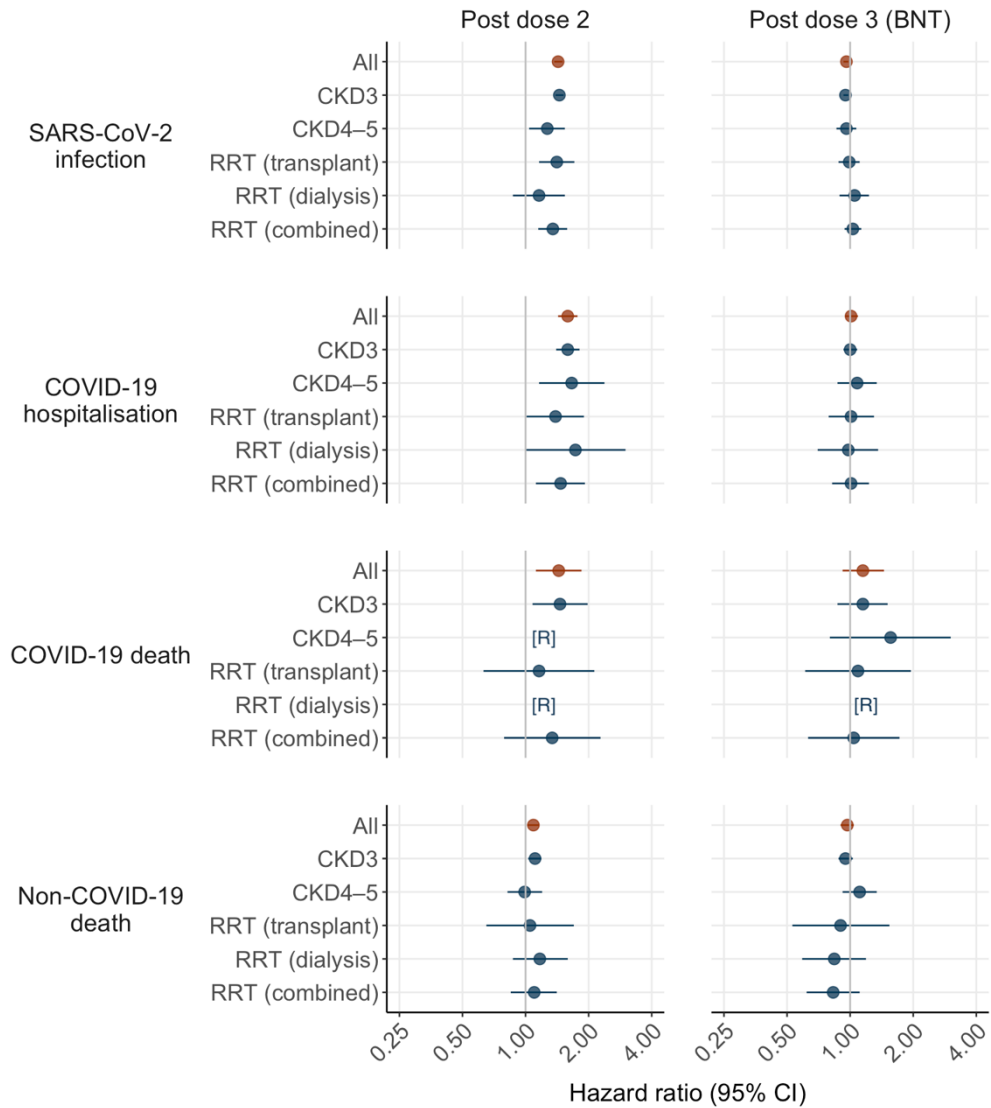
529
530
531

See **Table S1** for further details on variable definitions. Equivalent data for the three-dose cohort are provided in **Table S2**. Data are n (%) after rounding to the nearest 5. AZ, ChAdOx1-S (AstraZeneca); BNT, BNT162b2 (Pfizer/BioNTech). CKD, chronic kidney disease; JCVI, Joint Committee on Vaccination and Immunisation; RRT, renal replacement therapy.



532
533
534
535
536
537
538
539
540
541
542

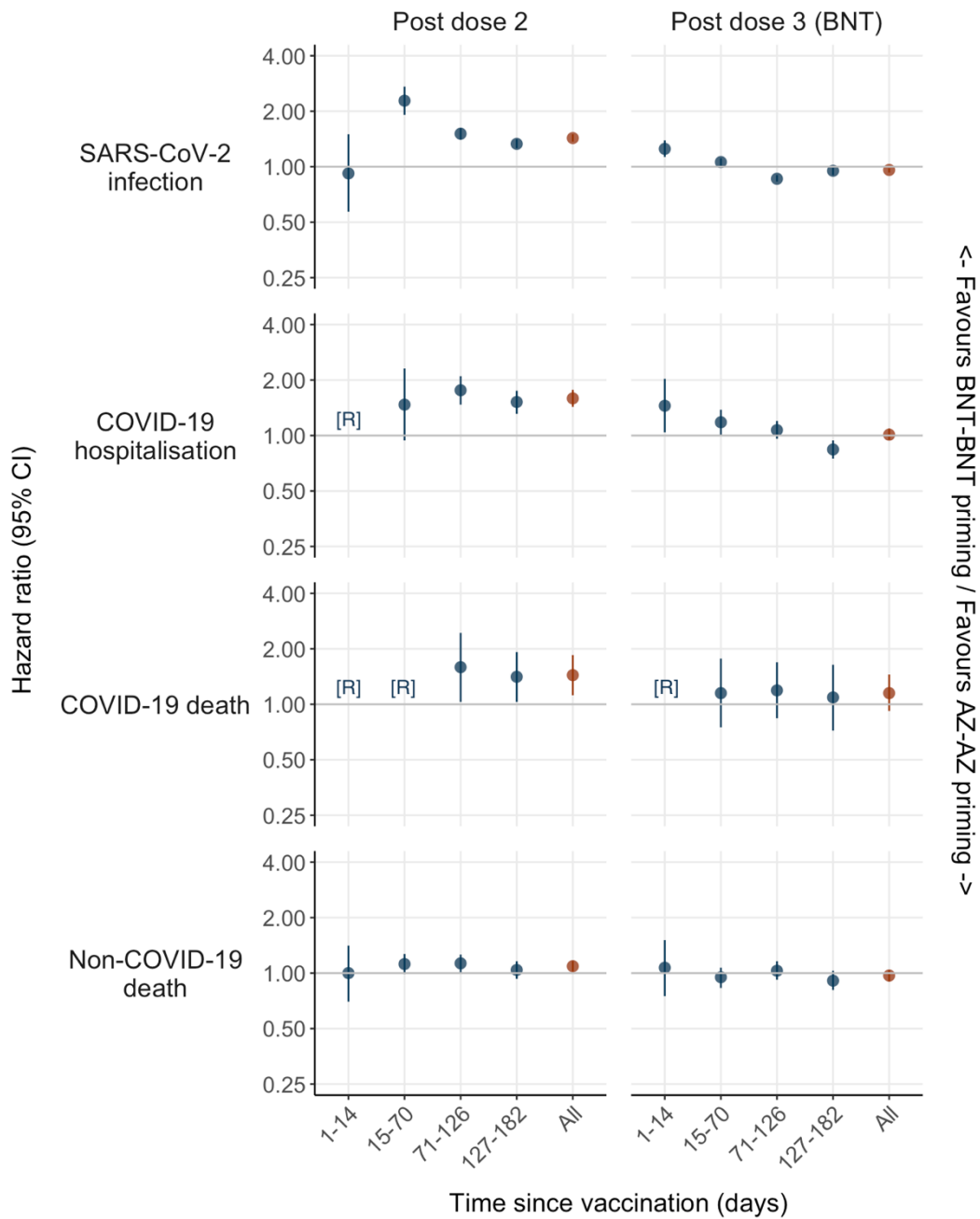
Figure 1. Cumulative incidence rates by vaccine group. Kaplan-Meier estimates of cumulative incidence in matched two-dose and three-dose sub-cohorts. Kaplan-Meier steps are delayed until ≥ 5 events occur in compliance with re-identification minimisation requirements in OpenSAFELY. Data for the matched sub-cohort are shown here to minimise confounding associated with key matching variables; see **Supplementary Figure S1** for equivalent plots relating to the unmatched cohorts. Numbers at risk at days 0, 14, 70, and 126 are provided in **Supplementary Tables S8** (two-dose cohort) and **S10** (three-dose cohort). AZ, AZD1222 (AstraZeneca); BNT, BNT162b2 (Pfizer/BioNTech).



<- Favours AZ-AZ priming / Favours BNT-BNT priming ->

543
544
545
546
547
548
549
550

Figure 2. Hazard ratios for the comparative effectiveness of two- and three-dose schedules in kidney disease subgroups. See **Supplementary Tables S7** (two-dose cohort) and **S9** (three-dose cohort) for associated population sizes and incidence rates. AZ, AZD1222 (AstraZeneca); BNT, BNT162b2 (Pfizer/BioNTech); CI, confidence interval; CKD, chronic kidney disease; [R], redacted due to low event counts in one or both vaccine groups; RRT, renal replacement therapy.



551
552
553
554
555
556

Figure 3. Hazard ratios for the comparative effectiveness of two- and three-dose schedules. See **Supplementary Tables S8** (two-dose cohort) and **S8** (three-dose cohort) for associated population sizes and incidence rates. AZ, AZD1222 (AstraZeneca); BNT, BNT162b2 (Pfizer/BioNTech); CI, confidence interval; [R], redacted due to low event counts in one or more groups.

557 References

- 558 1. Parker EPK, Desai S, Marti M, et al. Response to additional COVID-19 vaccine doses
559 in people who are immunocompromised: a rapid review. *Lancet Glob Health* 2022; **10**(3):
560 e326-e8.
- 561 2. Lee A, Wong SY, Chai LYA, et al. Efficacy of covid-19 vaccines in
562 immunocompromised patients: systematic review and meta-analysis. *BMJ* 2022; **376**:
563 e068632.
- 564 3. Collaborative: TO, Green A, Curtis H, et al. Describing the population experiencing
565 COVID-19 vaccine breakthrough following second vaccination in England: A cohort study
566 from OpenSAFELY. *medRxiv* 2021: 2021.11.08.21265380.
- 567 4. Nab L, Parker EP, Andrews CD, et al. Changes in COVID-19-related mortality across
568 key demographic and clinical subgroups: an observational cohort study using the
569 OpenSAFELY platform on 18 million adults in England. *medRxiv* 2022:
570 2022.07.30.22278161.
- 571 5. Williamson EJ, Walker AJ, Bhaskaran K, et al. Factors associated with COVID-19-
572 related death using OpenSAFELY. *Nature* 2020; **584**(7821): 430-6.
- 573 6. Carr EJ, Wu M, Harvey R, et al. Neutralising antibodies after COVID-19 vaccination
574 in UK haemodialysis patients. *Lancet* 2021; **398**(10305): 1038-41.
- 575 7. Meijers B, Goedgezelschap A, Peeters D, et al. Heterologous versus homologous
576 triple anti-COVID-19 vaccine regimens in patients on maintenance haemodialysis. *Nephrol*
577 *Dial Transplant* 2022; **37**(7): 1384-6.
- 578 8. Martin P, Gleeson S, Clarke CL, et al. Comparison of immunogenicity and clinical
579 effectiveness between BNT162b2 and ChAdOx1 SARS-CoV-2 vaccines in people with end-
580 stage kidney disease receiving haemodialysis: A prospective, observational cohort study.
581 *Lancet Reg Health Eur* 2022; **21**: 100478.
- 582 9. Carr EJ, Wu M, Harvey R, et al. Omicron neutralising antibodies after COVID-19
583 vaccination in haemodialysis patients. *Lancet* 2022; **399**(10327): 800-2.
- 584 10. PRIMIS UoN. SARS-CoV2 (COVID-19) vaccination uptake reporting specification
585 (version 1). Available from: <https://www.nottingham.ac.uk/primis/covid-19/covid-19.aspx>
586 (accessed 14 October 2021). 2021.
- 587 11. Levey AS, Stevens LA, Schmid CH, et al. A new equation to estimate glomerular
588 filtration rate. *Ann Intern Med* 2009; **150**(9): 604-12.
- 589 12. JCVI. Joint Committee on Vaccination and Immunisation (JCVI) advice on third
590 primary dose vaccination. Available from:
591 [https://www.gov.uk/government/publications/third-primary-covid-19-vaccine-dose-for-](https://www.gov.uk/government/publications/third-primary-covid-19-vaccine-dose-for-people-who-are-immunosuppressed-jcvi-advice/joint-committee-on-vaccination-and-immunisation-jcvi-advice-on-third-primary-dose-vaccination)
592 [people-who-are-immunosuppressed-jcvi-advice/joint-committee-on-vaccination-and-](https://www.gov.uk/government/publications/third-primary-covid-19-vaccine-dose-for-people-who-are-immunosuppressed-jcvi-advice/joint-committee-on-vaccination-and-immunisation-jcvi-advice-on-third-primary-dose-vaccination)
593 [immunisation-jcvi-advice-on-third-primary-dose-vaccination](https://www.gov.uk/government/publications/third-primary-covid-19-vaccine-dose-for-people-who-are-immunosuppressed-jcvi-advice/joint-committee-on-vaccination-and-immunisation-jcvi-advice-on-third-primary-dose-vaccination) (accessed 12 April 2022). 2021.
- 594 13. JCVI. JCVI statement regarding a COVID-19 booster vaccine programme for winter
595 2021 to 2022. Available from: [https://www.gov.uk/government/publications/jcvi-statement-](https://www.gov.uk/government/publications/jcvi-statement-september-2021-covid-19-booster-vaccine-programme-for-winter-2021-to-2022/jcvi-statement-regarding-a-covid-19-booster-vaccine-programme-for-winter-2021-to-2022)
596 [september-2021-covid-19-booster-vaccine-programme-for-winter-2021-to-2022/jcvi-](https://www.gov.uk/government/publications/jcvi-statement-september-2021-covid-19-booster-vaccine-programme-for-winter-2021-to-2022/jcvi-statement-regarding-a-covid-19-booster-vaccine-programme-for-winter-2021-to-2022)
597 [statement-regarding-a-covid-19-booster-vaccine-programme-for-winter-2021-to-2022](https://www.gov.uk/government/publications/jcvi-statement-september-2021-covid-19-booster-vaccine-programme-for-winter-2021-to-2022/jcvi-statement-regarding-a-covid-19-booster-vaccine-programme-for-winter-2021-to-2022)
598 (accessed 12 April 2022). 2021.
- 599 14. England N. NHS COVID-19 vaccine programme delivers first spring boosters.
600 Available from: [https://www.england.nhs.uk/2022/03/nhs-covid-19-vaccine-programme-](https://www.england.nhs.uk/2022/03/nhs-covid-19-vaccine-programme-delivers-first-spring-boosters/)
601 [delivers-first-spring-boosters/](https://www.england.nhs.uk/2022/03/nhs-covid-19-vaccine-programme-delivers-first-spring-boosters/) (last accessed 09 November 2022). 2022.
- 602 15. JCVI. JCVI advises a spring COVID-19 vaccine dose for the most vulnerable.
603 Available from: [https://www.gov.uk/government/news/jcvi-advises-a-spring-covid-19-](https://www.gov.uk/government/news/jcvi-advises-a-spring-covid-19-vaccine-dose-for-the-most-vulnerable)
604 [vaccine-dose-for-the-most-vulnerable](https://www.gov.uk/government/news/jcvi-advises-a-spring-covid-19-vaccine-dose-for-the-most-vulnerable) (last accessed 14 April 2022). 2022.

- 605 16. Cheetham NJ, Kibble M, Wong A, et al. Antibody levels following vaccination
606 against SARS-CoV-2: associations with post-vaccination infection and risk factors. *medRxiv*
607 2022: 2022.05.19.22275214.
- 608 17. Liu X, Shaw RH, Stuart ASV, et al. Safety and immunogenicity of heterologous
609 versus homologous prime-boost schedules with an adenoviral vectored and mRNA COVID-
610 19 vaccine (Com-COV): a single-blind, randomised, non-inferiority trial. *Lancet* 2021;
611 **398**(10303): 856-69.
- 612 18. Klemis V, Schmidt T, Schub D, et al. Comparative immunogenicity and
613 reactogenicity of heterologous ChAdOx1-nCoV-19-priming and BNT162b2 or mRNA-1273-
614 boosting with homologous COVID-19 vaccine regimens. *Nat Commun* 2022; **13**(1): 4710.
- 615 19. Prendecki M, Thomson T, Clarke CL, et al. Immunological responses to SARS-CoV-
616 2 vaccines in kidney transplant recipients. *Lancet* 2021; **398**(10310): 1482-4.
- 617 20. Lopez Bernal J, Andrews N, Gower C, et al. Effectiveness of Covid-19 Vaccines
618 against the B.1.617.2 (Delta) Variant. *N Engl J Med* 2021; **385**(7): 585-94.
- 619 21. Horne EMF, Hulme WJ, Keogh RH, et al. Waning effectiveness of BNT162b2 and
620 ChAdOx1 covid-19 vaccines over six months since second dose: OpenSAFELY cohort study
621 using linked electronic health records. *BMJ* 2022; **378**: e071249.
- 622 22. Callaghan CJ, Mumford L, Curtis RMK, et al. Real-world Effectiveness of the Pfizer-
623 BioNTech BNT162b2 and Oxford-AstraZeneca ChAdOx1-S Vaccines Against SARS-CoV-2
624 in Solid Organ and Islet Transplant Recipients. *Transplantation* 2022; **106**(3): 436-46.
- 625 23. Ashby DR, Caplin B, Corbett RW, et al. Severity of COVID-19 after Vaccination
626 among Hemodialysis Patients: An Observational Cohort Study. *Clin J Am Soc Nephrol* 2022;
627 **17**(6): 843-50.
- 628 24. Munro APS, Janani L, Cornelius V, et al. Safety and immunogenicity of seven
629 COVID-19 vaccines as a third dose (booster) following two doses of ChAdOx1 nCov-19 or
630 BNT162b2 in the UK (COV-BOOST): a blinded, multicentre, randomised, controlled, phase
631 2 trial. *Lancet* 2021; **398**(10318): 2258-76.
- 632 25. Masset C, Ville S, Garandeau C, et al. Observations on improving COVID-19
633 vaccination responses in kidney transplant recipients: heterologous vaccination and
634 immunosuppression modulation. *Kidney Int* 2022; **101**(3): 642-5.
- 635 26. Andrews N, Stowe J, Kirsebom F, et al. Effectiveness of COVID-19 booster vaccines
636 against COVID-19-related symptoms, hospitalization and death in England. *Nat Med* 2022;
637 **28**(4): 831-7.
- 638 27. Spensley KJ, Gleeson S, Martin P, et al. Comparison of Vaccine Effectiveness
639 Against the Omicron (B.1.1.529) Variant in Hemodialysis Patients. *KI Rep* 2022; **7**(6): 1406-
640 9.
- 641 28. Andrews C, Schultze A, Curtis H, et al. OpenSAFELY: Representativeness of
642 electronic health record platform OpenSAFELY-TPP data compared to the population of
643 England. *Wellcome Open Res* 2022; **7**: 191.
- 644 29. Parker EP, Tazare J, Hulme WJ, et al. Factors associated with COVID-19 vaccine
645 uptake in people with kidney disease: an OpenSAFELY cohort study. *medRxiv* 2022:
646 2022.06.14.22276391.
- 647 30. Curtis HJ, Inglesby P, Morton CE, et al. Trends and clinical characteristics of
648 COVID-19 vaccine recipients: a federated analysis of 57.9 million patients' primary care
649 records in situ using OpenSAFELY. *Br J Gen Pract* 2022; **72**(714): e51-e62.
- 650