

1
2
3
4
5
6
7
8
9
10
11
12
13
14
15
16
17
18
19
20
21
22
23
24
25
26
27
28
29
30
31
32
33
34

White matter tract integrity is reduced in major depression and in individuals with genetic liability for depression

David Nothdurfter¹, Philippe Jawinski¹, Sebastian Markt^{1*},

¹Humboldt-Universität zu Berlin, Germany

*corresponding author's address:
Dr. Sebastian Markt
Humboldt Universität zu Berlin
Unter den Linden 6
10099 Berlin, Germany
NOTE: This preprint reports new research that has not been certified by peer review and should not be used to guide clinical practice.
sebastian.markett@hu-berlin.de

1 **0. Abstract**

2 Major depression has been linked to alterations of the brain's white matter architecture. Major
3 depression has also a considerable genetic component. It is, however, unclear if genetic liability
4 for depression relates directly to the suggested alterations at the brain level.

5 We re-evaluated white matter fiber tract alterations in major depression and aimed to relate
6 polygenic risk for depression in unaffected individuals to these alterations.

7 We conducted a population-based retrospective cohort study with N=17183 participants (n=287
8 currently depressed, n=5536 formerly depressed, n= 13360 healthy) aged 44 to 82 from the UK
9 Biobank imaging cohort, collected between 2015 and 2020.

10 Depression status was assessed based on questionnaire data. We derived 27 major white matter
11 tracts from diffusion MRI and indexed their integrity according to mean fractional anisotropy.
12 Genetic liability for depression was quantified by polygenic scores based on three recent case-
13 control GWAS.

14 White matter integrity was globally reduced in depression. The reduction was most pronounced
15 on thalamic and intracortical fiber tracts, where the reduction was observed irrespective of
16 current symptom status. Non-depressed individuals showed already a reduction in relevant fiber
17 tracts with increasing polygenic risk, particularly in thalamic radiations. Subsequent in-silico
18 simulations and non-parametric tests confirmed that the polygenic association was stronger than
19 expected given the low-level statistical dependencies between target and discovery samples.

20 White matter integrity on thalamic and association tracts is reduced in depression irrespective
21 of current disease status and relates to the underlying genetic risk factors in unaffected
22 individuals. The observed statistical links between genes, brain, and disorder adhere to the
23 definition of an intermediate phenotype at the brain level.

1 **1. Introduction**

2 Depression is among the most prevalent psychiatric disorders in Europe and one of the leading
3 causes of disability around the globe^{1,2}. Recent genome-wide association studies (GWAS) have
4 confirmed that depression is considerably heritable and highly polygenic with many individual
5 genetic variants of very small effect sizes each³⁻⁶. At the time of writing, about 3.2% of the risk
6 towards major depression can be explained by polygenic scores, i.e., weighted sum scores that
7 aggregate information of multiple trait-associated alleles from GWAS⁴. Little is known,
8 however, about how this genetic risk might translate into depression. In the present study, we
9 aim at identifying brain phenotypes that may mediate the effects of genetic variation on disease
10 risk. Neuroimaging studies suggest alterations of the integrity of white matter pathways in
11 people suffering from depression⁷. While the findings of lower global white matter integrity in
12 people suffering from depression are robust⁸, it remains open which specific brain pathways
13 are altered. Previous research has yielded mixed results, also due to different MRI protocols or
14 limited power in studies with low sample size⁹. Meta-analyses have found most consistently
15 alterations in the genu of the corpus callosum but have produced mixed results regarding other
16 fiber tracts⁸⁻¹¹. Even larger sample size may be needed to overcome limitations and to resolve
17 inconsistencies regarding implicated fiber tracts. Another reason for inconsistent findings might
18 be heterogeneity in case definition when not distinguishing between currently depressed
19 individuals and individuals with a life-time history of depression. It has been suggested, for
20 instance, that individuals suffering from acute depression exhibit more pronounced alterations
21 of connectivity patterns⁹.

22 The goals of the present study are twofold. First, we seek to re-evaluate alterations in white
23 matter integrity. By distinguishing between life-time as well as currently depressed individuals
24 in a large imaging sample (UK Biobank with 19,183 participants) we seek to establish both
25 global and local connectivity markers of depression. Second, we seek to link depression-related
26 white matter alterations to the genetic risk for depression in the healthy population. Studies on
27 the relationship between polygenic risk for depression and brain connectivity have yielded
28 divergent results thus far^{12,13} but were also not based on the most recent GWAS findings on
29 depression. Establishing neural markers for depression (goal 1) and linking these markers to
30 polygenic liability (goal 2) are major steps towards a deeper understanding of the etiology of
31 depression¹⁴.

32

33 **2. Methods**

34

1 2.1. Data resource

2 All participants were drawn from the UK Biobank (UK Biobank, 2020a). Access to the UK
3 Biobank was granted under project 42032 (PI: Sebastian Markett). We focused on a subset of
4 $N = 19,183$ participants with neuroimaging (T1- and diffusion-weighted) and with complete
5 genotyping data (50.27% men; mean age $M = 64.08$ years ($SD = 7.52$, range: 45 – 82).

7 2.2 Exclusion criteria

8 We excluded participants with poor quality in the structural T1-weighted image, participants
9 with sex-aneuploidy and whose reported sex did not match their genetic sex, and participants
10 with a history of neurological disorders such as dementia or psychiatric disorders other than
11 depression, social phobia or anxiety, panic attacks, or generalized anxiety disorder. Details on
12 the exclusion procedure are described in the supplementary methods.

14 2.3 Depression status

15 Depression status was assessed based on participants' responses to a touchscreen questionnaire
16 presented during the imaging visit¹⁵. We assigned participants into three groups: *depressed*
17 *without current symptoms*, *currently depressed* and *healthy controls*. Details on the assignment
18 to the groups are described in the supplementary methods. In total, depression status was
19 obtained for 19,183 subjects (13360 healthy, 5536 formerly depressed and 287 currently
20 depressed individuals). For descriptive statistics see supplementary table T1.

22 2.4 Group matching

23 Because measures of white matter integrity are influenced by sex, age and image quality, we
24 performed an additional analysis in a subset of the sample in which the three groups were
25 matched for these variables (via propensity score matching; see supplementary methods). The
26 matched sub-sample included 8653 participants (see figure 1 and supplementary tables T1-T4).

28 2.5 MRI analyses

29 MRI data were acquired on Siemens Skyra 3T scanners at three different imaging facilities
30 across the UK. We used the preprocessed imaging-derived phenotypes for DTI data, generated
31 by an imaging-processing pipeline run by the UK Biobank¹⁶. In brief, tractography was
32 performed in FSL's probtrackx and 27 major tracts were automatically reconstructed from the
33 data and characterized by mean fractional anisotropy (FA). More details are given in the
34 supplementary methods.

1 Because fiber tracts share a substantial amount of variance¹⁷, we computed summary FA
2 measures (via principal component analyses) for groups of fiber tracts (all fiber tracts,
3 association/ commissural fibers, thalamic radiations and projection fibers), following
4 suggestions from previous work¹⁸ (see supplementary methods for more details).
5 Multiple regression analyses were then performed to investigate differences in fractional
6 anisotropy between the three groups, individually for the three comparisons (currently vs.
7 formerly depressed, currently depressed vs. healthy, formerly depressed vs. healthy). The four
8 PCs (summary FA measures) were each set as the dependent variable, while depression status
9 served as the independent variable. Also, multiple regressions were performed with FA of
10 individual fiber tracts as dependent variable (applying the Benjamini-Hochberg procedure with
11 a false discovery rate of 5%¹⁹).

12

13 *2.6. Polygenic risk score analyses*

14 Polygenic risk scores were based on three genome-wide association studies (GWAS)⁴⁻⁶. Details
15 on the calculation of the polygenic risk scores are described in the supplementary methods. To
16 investigate if higher polygenic risk for depression is associated with lower white matter
17 integrity on depression-related fiber tracts, we analyzed the remaining healthy participants that
18 were not used for the previous analyses with the matched subgroups. To ensure full equivalence
19 between this analysis and the group comparison, we used PCs from the group comparison and
20 projected the unmatched healthy individuals' data onto these components. The resulting factor
21 scores as well as FA values of individual fiber tracts were then correlated with participants'
22 polygenic risk scores for depression. Multiple regressions were performed with factor scores as
23 dependent variable and each polygenic risk score as independent variables. In addition to the
24 above-mentioned covariates, genotyping array and 20 genetic principal components were
25 included. As the three GWAS discovery samples showed varying sample overlap (6.19, 44.74
26 and 59.58%) with the full UKB cohort from which we selected a subsample for the present
27 study, we performed additional analyses to ensure that the overlap does not confound our
28 conclusions. We benchmarked our results in comparison to a null model that was based on a
29 series of simulations in which we explored how random variables with varying intercorrelations
30 with depression status are related to the polygenic risk scores. The rationale behind these
31 analyses was to quantify the impact of sample overlap between GWAS discovery and target
32 samples under different boundary conditions. As part of this benchmarking, each empirical PGS
33 association was compared to the distribution of PGS associations with 10,000 random synthetic

1 variables which were similarly intercorrelated with depression status as white matter integrity.
2 We refer to the supplementary material for more details.

3
4

5 *2.7. Genetic correlations.*

6 We conducted GWAS using *PLINK2* for the FA phenotypes that differed between groups. All
7 participants with available genetic and imaging data were included for this step. We then
8 performed linkage disequilibrium score regression to calculate SNP-based heritabilities²⁰.
9 Finally, genetic correlations were performed between the depression phenotypes and the FA
10 phenotypes.

11

12 *2.8. Covariates and Outlier exclusion*

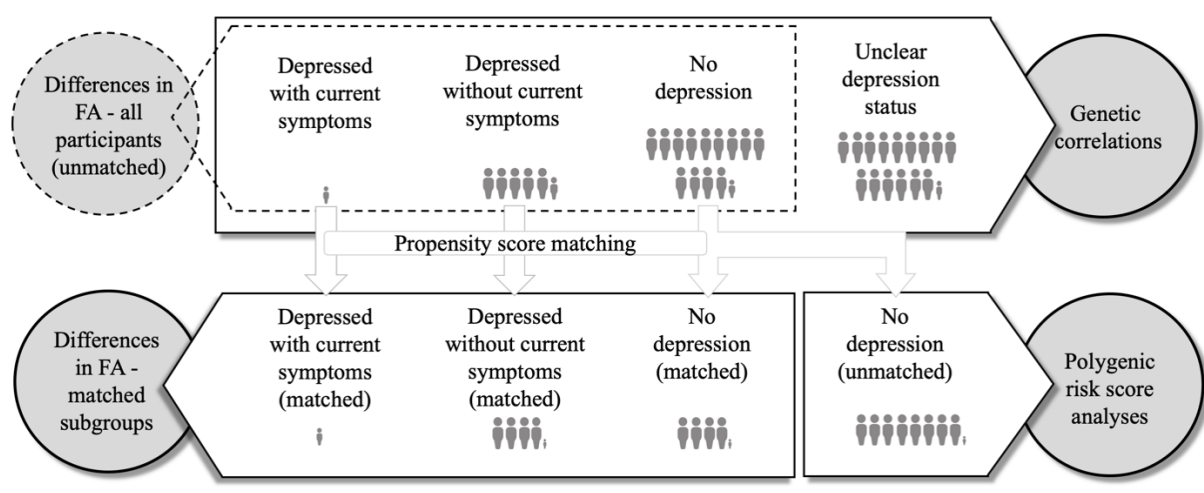
13 Highest degree of education, intake of antidepressants, sex, age, age², image quality and the
14 location of the assessment center were entered as covariates (see supplementary methods for
15 more details). For all analyses, we excluded participants with outliers in the PC or FA value of
16 interest by applying the Tukey criterion. On average, 1.27% ($SD=0.76$) of the participants were
17 excluded in the different analyses due to outliers. Figure 1 provides an overview of the different
18 sub-samples of the UK Biobank used for the various analyses.

19

20 *2.9 Data and Code availability statement*

21 All analyses were performed in *R* version 3.6.3. All data were taken from the UK Biobank.
22 Data access is limited to registered researchers via <https://www.ukbiobank.ac.uk/>. We will
23 publish analysis code for the null model for PGS testing as well as code to reproduce the figures
24 on the open science framework upon final acceptance of the manuscript.

25



1
 2 Figure 1 Overview of the sub-samples included for the different analyses. Each depicted
 3 person-icon represents 1,000 participants. Smaller icons represent proportionally lower
 4 numbers of participants (unmatched sub-samples: depressed with current symptoms 287
 5 participants, depressed without current symptoms 5536 participants, no depression 13360
 6 participants, unclear depression status 15876 participants; matched sub-samples: depressed
 7 with current symptoms 286 participants, depressed without current symptoms 4185
 8 participants, no depression 4182 participants; no depression (remaining unmatched) 8092
 9 participants).

10

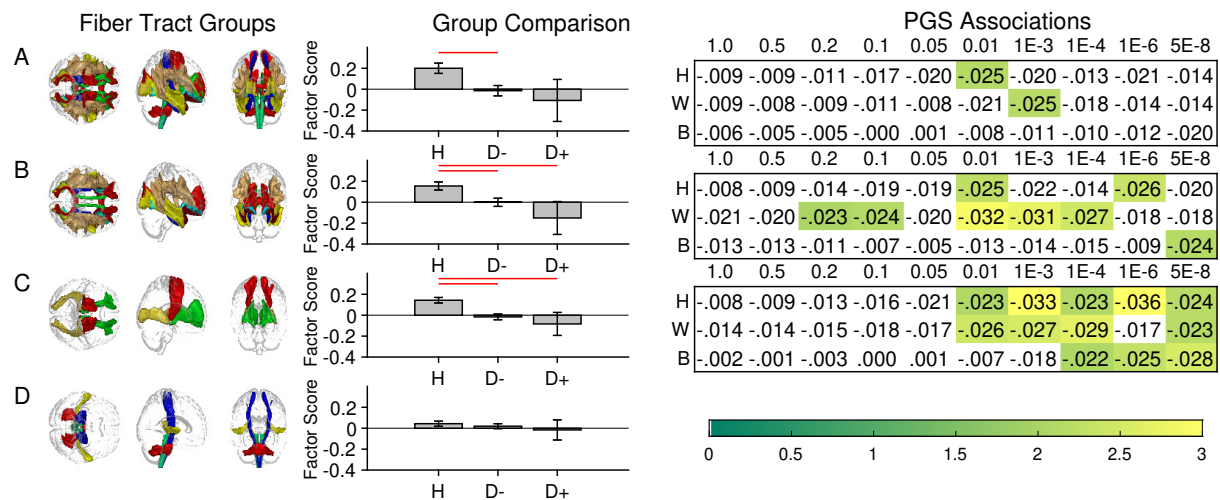
11 3. Results

12

13 3.1. Differences in global FA components

14 We first investigated group differences in global FA as quantified by the first principal
 15 component (PC) across all fiber tracts and across all fiber tract groups. Supplementary tables
 16 T5 and T6 depict loadings of individual fiber tracts on these PCs. Figure 2 shows the
 17 comparison of the four fiber groups' PCs for the subgroup of matched participants. Multiple
 18 regression analyses revealed that depressed participants without current symptoms showed
 19 significantly lower values on the PC derived from all fiber tracts ($b = -0.184, p = 0.008$),
 20 association/commissural fibers and thalamic radiations than healthy participants ($b = -0.219, p$
 21 $= .018; b = -0.132, p < .001$). Between healthy participants and depressed participants with
 22 current symptoms, the PCs derived from association/commissural fibers and thalamic
 23 radiations differed significantly ($b = -0.38, p = .019; b = -0.252, p = .023$). No differences in any
 24 of the four PCs could be observed between the two depression groups. The results were similar
 25 to the analyses including the full sample, except for a lack of significant difference in thalamic
 26 radiations between currently depressed and healthy participants (see tables T7 to T9).

27



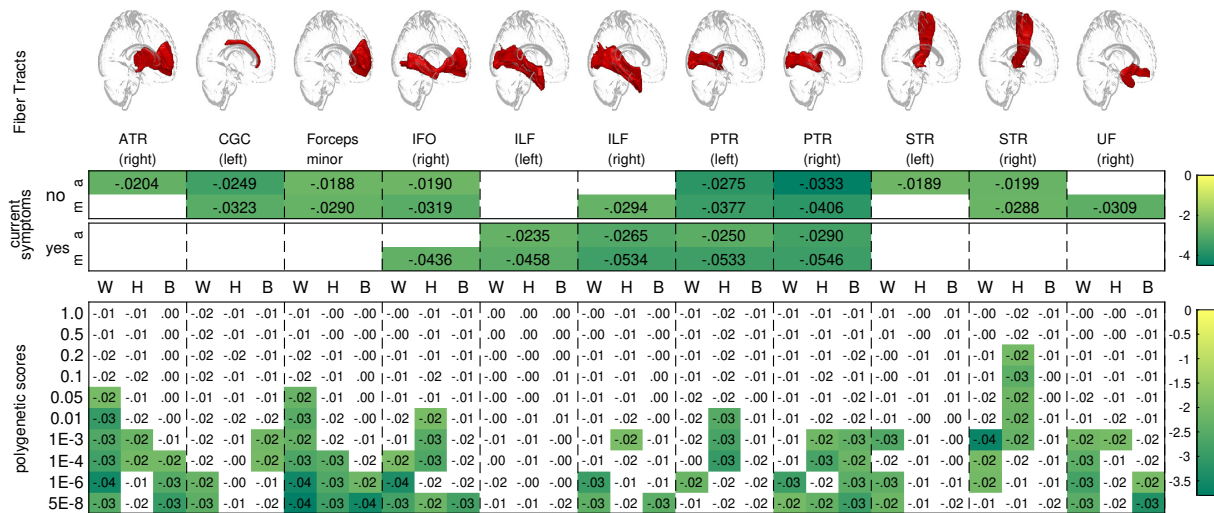
1
2 Figure 2 Overall integrity of all white matter fiber tracts (A) was reduced in individuals with a
3 history of depression but no current symptoms (D-) relative to healthy participants (H). For
4 association fiber tracts (B) and thalamic radiations (C), the reduction was additionally visible
5 for the smaller group of individuals with current symptoms (D+). No such difference was
6 observed for projection fibers (D). The bar graphs in the middle column give the factor scores
7 of the fiber tracts in the matched subgroups (caliper 0.05). The red lines mark significant group
8 differences. The heatmaps on the right list association strengths (standardized beta coefficients)
9 between fiber tract integrity and polygenic scores based on the GWAS by Howard et al. (H),
10 Wray et al. (W), and Baselmans et al. (B) across different thresholds. Significant coefficients
11 are highlighted according to the corresponding t-statistic.

12

13 3. 2. Differences in individual fiber tracts

14 Eleven individual fiber tracts showed decreased FA in depressed participants without current
15 symptoms in at least the full sample or the sub-sample including matched participants,
16 compared to healthy participants (figure 2). Between healthy participants and depressed
17 participants with current symptoms significant differences in FA were found for five fiber tracts
18 (figure 2). None of the fiber tracts differed between the two depression groups.

19



1
2 Figure 3 Eleven fiber tracts (top panel) showed group differences individually (middle panel).
3 We present standardized beta coefficients for group differences between healthy individuals
4 and individuals with a history of depression (no current symptoms) and individuals with current
5 symptoms, based on matched groups (m) and all participants (a). Only FDR-significant
6 coefficients are given and color-coded by the corresponding t-value. Polygenic score
7 associations are depicted in the bottom panel (different discovery GWAS in columns, different
8 thresholds in rows). Only significant associations are highlighted and color coded by the
9 corresponding t-value.

10

11 3.3. Polygenic risk scores

12 Figure 2 depicts the associations between PGS and fiber integrity in healthy participants of the
13 fiber tract groups that were linked to depression in the group comparison (all fiber tracts,
14 commissural/association fibers, thalamic radiations). With increasing genetic liability for
15 depression (higher PGS scores), healthy individuals showed reduced integrity of
16 commissural/association fiber tracts and of the thalamic radiations, suggesting a subclinical
17 alteration of white matter integrity. Of note, this relationship was observed for all three
18 operationalizations of polygenic risk and extended across several PGS thresholds. Figure 3
19 depicts the association of PGS and the integrity of the individual fiber tracts for which we
20 observed group differences between healthy participants and one of the two depression groups.
21 Every fiber tract except the left inferior longitudinal fasciculus showed significant association
22 with at least one of the three PGS, most consistently for the anterior thalamic radiations and the
23 forceps minor.

24

25 3.4 Genetic correlations

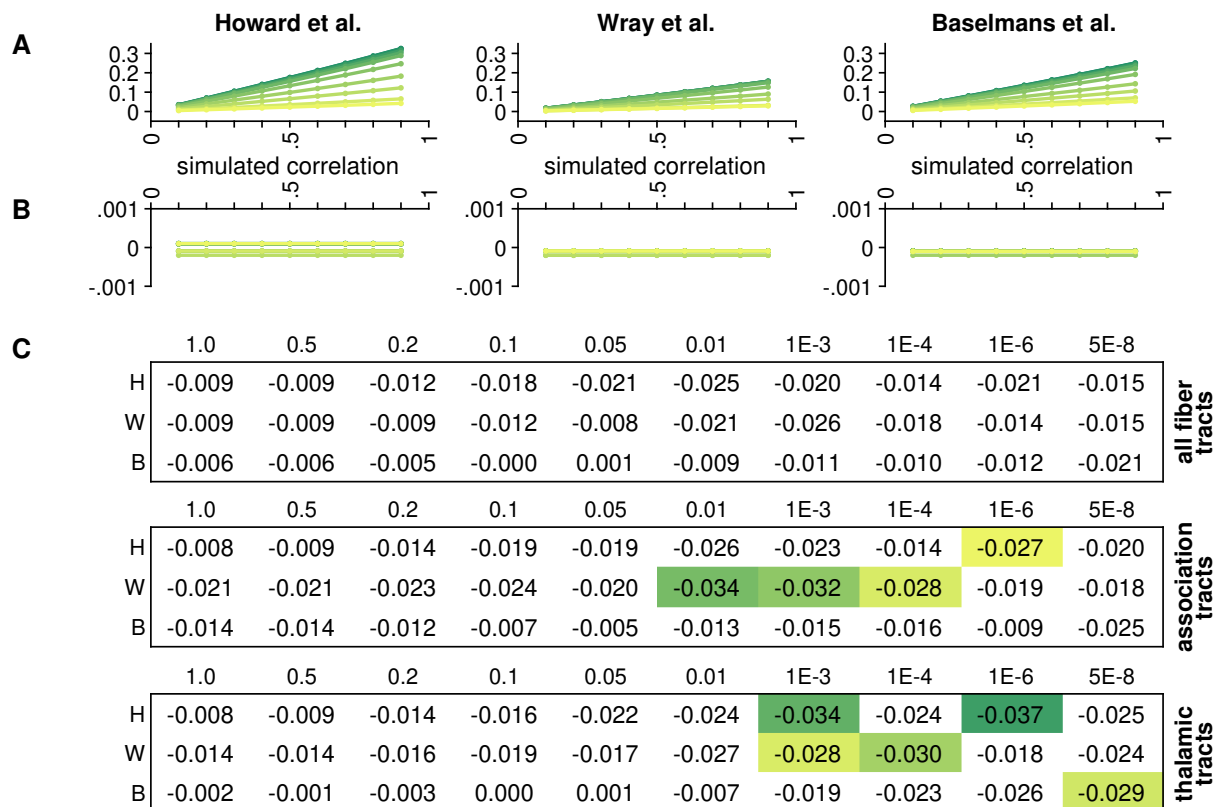
26 We sought to corroborate previous heritability estimates of depression through LD score
27 regression: Depending on the summary statistics from the original GWAS, heritability
28 estimates were 9.6%⁶, 6.3%⁴, and 3.1%⁵. SNP-based heritability for the global FA components

1 was considerable, ranging between 29-30% (supplementary table T21). Genetic correlations
2 between depression and global FA components were all in the expected directions but not
3 statistically significant (supplementary table T21). SNP-based heritability for individual fiber
4 tracts ranged between 19 and 33%. Genetic correlations with depression were all in the expected
5 direction but did not survive the correction for multiple comparisons (see supplementary table
6 T22).

7 8 *3.5 Validation analysis*

9 To investigate the influence of partly overlapping participants between the present and
10 the GWAS discovery samples, we simulated synthetic random data for which we systematically
11 manipulated the degree of intercorrelation with actual depression status. We then ran partial
12 correlation analyses identical to our actual analysis of white matter fiber statistics (see methods
13 and supplementary methods). As expected, we observed a spurious increase in polygenic
14 association with increasing intercorrelations between depression status and random data when
15 including patients and controls (Figure 4A). When limiting the analysis to healthy controls,
16 however, the partial correlations were close to zero ($< |1e-15|$), irrespective of the degree of
17 intercorrelation between the synthetic data and depression status (figure 4B). While the
18 simulation results suggest that partially overlapping discovery and target samples do not affect
19 the validity of PGS associations in a scenario where GWAS summary statistics are obtained by
20 case-control comparisons and the target sample includes only controls, we still decided to
21 complement the simulations with a further validation step: For each fiber group, we established
22 a null model of 10,000 random variables whose intercorrelation with depression status matched
23 the empirical correlations between fiber integrity and depression status. If the here reported
24 PGS associations with fiber integrity were simply a result of the partially overlapping samples,
25 we would expect similar PGS associations with the random data. This, however, was not the
26 case: For association/commissural tracts and for the thalamic radiations, we confirmed
27 significant reductions in fiber integrity in healthy participants with higher genetic liability for
28 depression (figure 4C). Only for the global measure of white matter integrity of all fiber tracts,
29 the comparison to the null model did not confirm the descriptive PGS association, suggesting
30 that the observed correlation is not stronger than the inherent interdependencies resulting from
31 sample overlap.

32



1
2 Figure 4 Results from the validation analyses: PGS associations with synthetic data are only
3 substantial when the target sample includes cases and controls, and increase as a function of
4 similarity between the variable of interest and disease status (A). When only healthy
5 participants are included in the target sample, the PGS associations with random data is
6 practically zero (B). The different lines reflect PGS on different thresholds, with more yellow
7 hues reflecting less liberal thresholds. The highlighted empirical PGS associations in panel C
8 are significantly larger (i.e. more negative) than PGS associations with comparable random data
9 ($p < .05$, non-parametric test with 10,000 random variables).

10

11

12

1 **4. Discussion**

2

3 The present study aimed at establishing structural connectivity markers for major depression,
4 and linking depression-related white matter alterations to the genetic risk for depression. We
5 found lower white matter fiber tract integrity in depression using data from the UK Biobank,
6 extending previous work with an earlier data release¹⁸. Our results support previous findings on
7 reduced integrity of interhemispheric fiber tracts, particularly the forceps minor^{8-11,21}, fiber
8 tracts belonging to the Papez circuit which plays a role in negative affect²², and the medial
9 forebrain bundle which includes the cingulum bundle and the uncinate fasciculus²³ (Bracht et
10 al., 2015). We further observed that similar reductions in white matter integrity present already
11 subclinically in healthy individuals with higher genetic liability for depression.

12

13 Mental disorders are considerably heritable²⁴ and contemporary GWAS results can be used to
14 quantify an individual's genetic liability for a disorder in the form of polygenic scores²⁵.
15 Linking PGS to brain structure and function bears the potential to elucidate the neural
16 mechanisms by which genetic risk translates into the disorder, to assess interactions with
17 environmental factors, and to characterize sub-clinical expression in unaffected populations. So
18 far, PGS-brain relationships have mostly been investigated in the context of schizophrenia and
19 autism¹ but not all attempts have been successful^{31,32}. PGS for depression and related
20 phenotypes have also been linked to brain structure and function³³⁻³⁶, but not all studies have
21 distinguished between cases and controls, or have linked the PGS-brain associations to
22 case/control differences. Particularly the latter, however, is crucial to establish links between
23 genes, brain, and behavior, and to establish intermediate phenotypes for the disorder. To the
24 best of our knowledge, our current results are the first to confirm neurostructural differences in
25 individuals with depression and link the same neurostructural variables to genetic liability for
26 depression in unaffected individuals. Our results thus provide major implications for structural
27 connectivity as an intermediate phenotype for depression.

28

29 To qualify as an intermediate phenotype (or endophenotype) of depression, an imaging-derived
30 phenotype needs to be related to the disorder, needs to be heritable, and needs to be relatable to
31 the genetic underpinnings of the disorder in unaffected individuals¹⁴. We confirmed these
32 criteria for white matter integrity: Table 1 summarizes our findings regarding these criteria for
33 different groups of fiber tracts. Using LD-score regression, we confirmed a SNP-based
34 heritability for white matter tract integrity ranging from 19 and 33%. Using polygenic scores,

1 we confirmed that genetic liability for depression is not only associated with the disorder itself,
2 but also with white matter tract integrity, which is a key postulate for an endophenotype^{37,38}.
3 Even though total effect sizes were low, the significant reductions in white matter integrity with
4 increasing genetic risk load in healthy individuals indicate that white matter integrity of
5 implicated fiber tracts fulfill the endophenotype criteria. The small effect sizes are a likely
6 consequence of the high polygenicity of the genetic underpinnings of depression and the limited
7 prediction accuracy of polygenic scores to date.³⁹

8
9 Table 1 Summary of the main results with respect to the endophenotype concept. White
10 matter integrity of association and commissural fiber tracts is heritable, reduced in depression
11 independent of current symptoms, and subclinically reduced in healthy individuals who are
12 genetically at risk.

| | Reduced in depression | Independent of current illness state | Heritable | Polygenic risk in healthy individuals |
|------------------------------------|-----------------------|--------------------------------------|-----------|---------------------------------------|
| All fiber tracts | x | x | x | (x) |
| Association/ commissural fibers | x | x | x | x |
| Thalamic radiation | x | x | x | x |
| Projection fibers | | x | | |

13
14
15 A well-known pitfall in PGS analyses is the spurious increase in association strength when the
16 GWAS discovery sample and the target sample overlap⁴⁰. Even partial sample overlap can
17 dramatically inflate observed associations. Partially overlapping samples, however, should be
18 less of a concern when the GWAS summary statistics reflect a group comparison (such as
19 individuals with depression vs. healthy controls) and the target variable of interest is only
20 assessed in individuals belonging to either group (such as healthy participants only). We
21 corroborated this conjecture through a series of simulations. And we established through a
22 simple non-parametric test that the observed relationship between polygenic liability for
23 depression and white matter integrity of intracortical and thalamic fiber tracts is substantial,
24 even in the face of overlapping samples. Given the large sample size requirements of discovery
25 GWAS³⁹, sample overlap will remain a concern, at least until the predictive accuracy of PGS
26 will improve to the point that meaningful associations can already be observed in small target
27 samples⁴¹. The here presented non-parametric test does not depend on prior knowledge of

1 sample overlap, does not require access to individual-level data from the discovery cohort, and
2 is easy to implement, particularly in psychiatric research contexts where summary statistics
3 often result from case/control comparisons.

4
5 Contrary to the polygenic score analyses, genetic correlations did not reveal significant
6 associations between FA phenotypes and depression. This may be explained by the lower
7 statistical power of summary-based (genetic correlations via LD score regression) relative to
8 individual-level association analysis (polygenic score analysis). Findings from genetic
9 correlations may indicate that the total genetic overlap between FA phenotypes and depression
10 is modest, in line with previous findings linking psychiatric diseases to brain structure⁴². The
11 lack of significant genetic correlations between FA and depression needs further investigation.
12 Another general limitation to the present study is the group definition which was not based on
13 structured clinical interviews but on self-report data. Even though this assessment led to similar
14 prevalence rates of depression as other studies¹⁵, it is still possible that depression in the present
15 study may have been over-diagnosed.

16
17 In summary, we report structural connectivity differences between healthy and depressed
18 individuals. These alterations are present in currently depressed as well as formerly depressed
19 individuals, are heritable, and seem to be related to higher genetic liability for depression in
20 healthy individuals. Our results thus provide indications for an involvement of structural
21 connectivity in the genetic etiology of depression. Identifying molecular substrates of brain
22 connectivity may thus reflect a promising strategy to inform individualized treatment⁴³⁻⁴⁵ and
23 improved diagnostics in the near future^{46,47}

24
25

26 **5. References**

27

- 28 1. Mathers CD, Loncar D. Projections of Global Mortality and Burden of Disease from
29 2002 to 2030. Samet J, ed. *PLoS Med*. 2006;3(11):e442.
30 doi:10.1371/journal.pmed.0030442
- 31 2. Wittchen HU, Jacobi F, Rehm J, et al. The size and burden of mental disorders and other
32 disorders of the brain in Europe 2010. *Eur Neuropsychopharmacol J Eur Coll*
33 *Neuropsychopharmacol*. 2011;21(9):655-679. doi:10.1016/j.euroneuro.2011.07.018
- 34 3. Sullivan PF, Neale MC, Kendler KS. Genetic Epidemiology of Major Depression:
35 Review and Meta-Analysis. *Am J Psychiatry*. 2000;157(10):1552-1562.
36 doi:10.1176/appi.ajp.157.10.1552

- 1 4. Howard DM, Adams MJ, Clarke TK, et al. Genome-wide meta-analysis of depression
2 identifies 102 independent variants and highlights the importance of the prefrontal brain
3 regions. *Nat Neurosci.* 2019;22(3):343-352. doi:10.1038/s41593-018-0326-7
- 4 5. Baselmans BML, Jansen R, Ip HF, et al. Multivariate genome-wide analyses of the well-
5 being spectrum. *Nat Genet.* 2019;51(3):445. doi:10.1038/s41588-018-0320-8
- 6 6. Wray NR, Ripke S, Mattheisen M, et al. Genome-wide association analyses identify 44
7 risk variants and refine the genetic architecture of major depression. *Nat Genet.*
8 2018;50(5):668-681. doi:10.1038/s41588-018-0090-3
- 9 7. Zhuo C, Li G, Lin X, et al. The rise and fall of MRI studies in major depressive disorder.
10 *Transl Psychiatry.* 2019;9(1):335. doi:10.1038/s41398-019-0680-6
- 11 8. Liao Y, Huang X, Wu Q, et al. Is depression a disconnection syndrome? Meta- analysis
12 of diffusion tensor imaging studies in patients with MDD. *J Psychiatry Neurosci.*
13 2013;38(1):49-56. doi:10.1503/jpn.110180
- 14 9. van Velzen LS, Kelly S, Isaev D, et al. White matter disturbances in major depressive
15 disorder: a coordinated analysis across 20 international cohorts in the ENIGMA MDD
16 working group. *Mol Psychiatry.* 2020;25(7):1511-1525. doi:10.1038/s41380-019-0477-2
- 17 10. Wise T, Radua J, Nortje G, Cleare AJ, Young AH, Arnone D. Voxel-Based Meta-
18 Analytical Evidence of Structural Disconnectivity in Major Depression and Bipolar
19 Disorder. *Biol Psychiatry.* 2016;79(4):293-302. doi:10.1016/j.biopsych.2015.03.004
- 20 11. Chen G, Hu X, Li L, et al. Disorganization of white matter architecture in major
21 depressive disorder: a meta-analysis of diffusion tensor imaging with tract-based spatial
22 statistics. *Sci Rep.* 2016;6(1):21825. doi:10.1038/srep21825
- 23 12. Reus LM, Shen X, Gibson J, et al. Association of polygenic risk for major psychiatric
24 illness with subcortical volumes and white matter integrity in UK Biobank. *Sci Rep.*
25 2017;7(1):42140. doi:10.1038/srep42140
- 26 13. Whalley HC, Sprooten E, Hackett S, et al. Polygenic Risk and White Matter Integrity in
27 Individuals at High Risk of Mood Disorder. *Biol Psychiatry.* 2013;74(4):280-286.
28 doi:10.1016/j.biopsych.2013.01.027
- 29 14. Gottesman II, Gould TD. The Endophenotype Concept in Psychiatry: Etymology and
30 Strategic Intentions. *Am J Psychiatry.* 2003;160(4):636-645.
31 doi:10.1176/appi.ajp.160.4.636
- 32 15. Smith DJ, Nicholl BI, Cullen B, et al. Prevalence and Characteristics of Probable Major
33 Depression and Bipolar Disorder within UK Biobank: Cross-Sectional Study of 172,751
34 Participants. Potash JB, ed. *PLoS ONE.* 2013;8(11):e75362.
35 doi:10.1371/journal.pone.0075362
- 36 16. Alfaro-Almagro F, Jenkinson M, Bangerter NK, et al. Image processing and Quality
37 Control for the first 10,000 brain imaging datasets from UK Biobank. *NeuroImage.*
38 2018;166:400-424. doi:10.1016/j.neuroimage.2017.10.034

- 1 17. Cox SR, Ritchie SJ, Tucker-Drob EM, et al. Ageing and brain white matter structure in
2 3,513 UK Biobank participants. *Nat Commun*. 2016;7(1):13629.
3 doi:10.1038/ncomms13629
- 4 18. Shen X, Reus LM, Cox SR, et al. Subcortical volume and white matter integrity
5 abnormalities in major depressive disorder: findings from UK Biobank imaging data. *Sci*
6 *Rep*. 2017;7(1). doi:10.1038/s41598-017-05507-6
- 7 19. Benjamini Y, Hochberg Y. Controlling the False Discovery Rate: A Practical and
8 Powerful Approach to Multiple Testing. *J R Stat Soc Ser B Methodol*. 1995;57(1):289-
9 300. doi:10.1111/j.2517-6161.1995.tb02031.x
- 10 20. Bulik-Sullivan BK, Loh PR, Finucane HK, et al. LD Score regression distinguishes
11 confounding from polygenicity in genome-wide association studies. *Nat Genet*.
12 2015;47(3):291-295. doi:10.1038/ng.3211
- 13 21. Deng F, Wang Y, Huang H, et al. Abnormal segments of right uncinate fasciculus and
14 left anterior thalamic radiation in major and bipolar depression. *Prog*
15 *Neuropsychopharmacol Biol Psychiatry*. 2018;81:340-349.
16 doi:10.1016/j.pnpbp.2017.09.006
- 17 22. Papez J. A proposed mechanism of emotion. 1937 [classical article]. *J Neuropsychiatry*
18 *Clin Neurosci*. 1995;7(1):103-112. doi:10.1176/jnp.7.1.103
- 19 23. Bracht T, Linden D, Keedwell P. A review of white matter microstructure alterations of
20 pathways of the reward circuit in depression. *J Affect Disord*. 2015;187:45-53.
21 doi:10.1016/j.jad.2015.06.041
- 22 24. Pettersson E, Lichtenstein P, Larsson H, et al. Genetic influences on eight psychiatric
23 disorders based on family data of 4 408 646 full and half-siblings, and genetic data of
24 333 748 cases and controls. *Psychol Med*. 2019;49(07):1166-1173.
25 doi:10.1017/S0033291718002039
- 26 25. Murray GK, Lin T, Austin J, McGrath JJ, Hickie IB, Wray NR. Could Polygenic Risk
27 Scores Be Useful in Psychiatry?: A Review. *JAMA Psychiatry*. 2021;78(2):210.
28 doi:10.1001/jamapsychiatry.2020.3042
- 29 26. Grama S, Willcocks I, Hubert JJ, et al. Polygenic risk for schizophrenia and subcortical
30 brain anatomy in the UK Biobank cohort. *Transl Psychiatry*. 2020;10(1):309.
31 doi:10.1038/s41398-020-00940-0
- 32 27. Ranlund S, Rosa MJ, de Jong S, et al. Associations between polygenic risk scores for
33 four psychiatric illnesses and brain structure using multivariate pattern recognition.
34 *NeuroImage Clin*. 2018;20:1026-1036. doi:10.1016/j.nicl.2018.10.008
- 35 28. Sha Z, Schijven D, Francks C. Patterns of brain asymmetry associated with polygenic
36 risks for autism and schizophrenia implicate language and executive functions but not
37 brain masculinization. *Mol Psychiatry*. Published online July 1, 2021.
38 doi:10.1038/s41380-021-01204-z
- 39 29. Stauffer EM, Bethlehem RAI, Warriar V, et al. Grey and white matter microstructure is
40 associated with polygenic risk for schizophrenia. *Mol Psychiatry*. Published online
41 August 30, 2021. doi:10.1038/s41380-021-01260-5

- 1 30. Zhu X, Ward J, Cullen B, et al. Polygenic Risk for Schizophrenia, Brain Structure, and
2 Environmental Risk in UK Biobank. *Schizophr Bull Open*. 2021;2(1):sgab042.
3 doi:10.1093/schizbullopen/sgab042
- 4 31. Alemany S, Blok E, Jansen PR, Muetzel RL, White T. Brain morphology, autistic traits,
5 and polygenic risk for autism: A POPULATION-BASED neuroimaging study. *Autism Res*.
6 2021;14(10):2085-2099. doi:10.1002/aur.2576
- 7 32. van der Merwe C, Passchier R, Mufford M, Ramesar R, Dalvie S, Stein DJ. Polygenic
8 risk for schizophrenia and associated brain structural changes: A systematic review.
9 *Compr Psychiatry*. 2019;88:77-82. doi:10.1016/j.comppsy.2018.11.014
- 10 33. Schmitt S, Meller T, Stein F, et al. Effects of polygenic risk for major mental disorders
11 and cross-disorder on cortical complexity. *Psychol Med*. Published online April 8,
12 2021:1-12. doi:10.1017/S0033291721001082
- 13 34. Shen X, Howard DM, Adams MJ, et al. A phenome-wide association and Mendelian
14 Randomisation study of polygenic risk for depression in UK Biobank. *Nat Commun*.
15 2020;11(1):2301. doi:10.1038/s41467-020-16022-0
- 16 35. Ward J, Lyall LM, Bethlehem RAI, et al. Novel genome-wide associations for
17 anhedonia, genetic correlation with psychiatric disorders, and polygenic association with
18 brain structure. *Transl Psychiatry*. 2019;9(1):327. doi:10.1038/s41398-019-0635-y
- 19 36. Zhang X, Yan H, Yu H, et al. Childhood urbanicity interacts with polygenic risk for
20 depression to affect stress-related medial prefrontal function. *Transl Psychiatry*.
21 2021;11(1):522. doi:10.1038/s41398-021-01650-x
- 22 37. Kendler KS, Neale MC. Endophenotype: a conceptual analysis. *Mol Psychiatry*.
23 2010;15(8):789-797. doi:10.1038/mp.2010.8
- 24 38. Meyer-Lindenberg A, Weinberger DR. Intermediate phenotypes and genetic
25 mechanisms of psychiatric disorders. *Nat Rev Neurosci*. 2006;7(10):818-827.
26 doi:10.1038/nrn1993
- 27 39. Zhang Y, Qi G, Park JH, Chatterjee N. Estimation of complex effect-size distributions
28 using summary-level statistics from genome-wide association studies across 32 complex
29 traits. *Nat Genet*. 2018;50(9):1318-1326. doi:10.1038/s41588-018-0193-x
- 30 40. Wray NR, Yang J, Hayes BJ, Price AL, Goddard ME, Visscher PM. Pitfalls of
31 predicting complex traits from SNPs. *Nat Rev Genet*. 2013;14(7):507-515.
32 doi:10.1038/nrg3457
- 33 41. Plomin R, von Stumm S. The new genetics of intelligence. *Nat Rev Genet*. 2018;19:148-
34 159. doi:10.1038/nrg.2017.104
- 35 42. van der Meer D, Shadrin AA, O'Connell K, et al. Boosting Schizophrenia Genetics by
36 Utilizing Genetic Overlap With Brain Morphology. *Biol Psychiatry*. 2022;92(4):291-
37 298. doi:10.1016/j.biopsych.2021.12.007
- 38 43. Drobisz D, Damborská A. Deep brain stimulation targets for treating depression. *Behav*
39 *Brain Res*. 2019;359:266-273. doi:10.1016/j.bbr.2018.11.004

- 1 44. Riva-Posse P, Choi KS, Holtzheimer PE, et al. A connectomic approach for subcallosal
2 cingulate deep brain stimulation surgery: prospective targeting in treatment-resistant
3 depression. *Mol Psychiatry*. 2018;23(4):843-849. doi:10.1038/mp.2017.59
- 4 45. Korgaonkar MS, Rekshan W, Gordon E, et al. Magnetic Resonance Imaging Measures
5 of Brain Structure to Predict Antidepressant Treatment Outcome in Major Depressive
6 Disorder. *EBioMedicine*. 2015;2(1):37-45. doi:10.1016/j.ebiom.2014.12.002
- 7 46. Gong Q, He Y. Depression, Neuroimaging and Connectomics: A Selective Overview.
8 *Biol Psychiatry*. 2015;77(3):223-235. doi:10.1016/j.biopsych.2014.08.009
- 9 47. Korgaonkar MS, Cooper NJ, Williams LM, Grieve SM. Mapping inter-regional
10 connectivity of the entire cortex to characterize major depressive disorder: a whole-brain
11 diffusion tensor imaging tractography study. *NeuroReport*. 2012;23(9):566-571.
12 doi:10.1097/WNR.0b013e3283546264
- 13