

Supplementary files

The phenotypic spectrum of terminal 6q deletions based on a large cohort derived from social media and literature: a prominent role for *DLL1*

Aafke Engwerda, Wilhelmina S. Kerstjens-Frederikse, Nicole Corsten-Janssen, Trijnie Dijkhuizen and Conny M. A. van Ravenswaaij-Arts

Supplementary Figures

Figure S1. Developmental delay in children older than 2 years of age

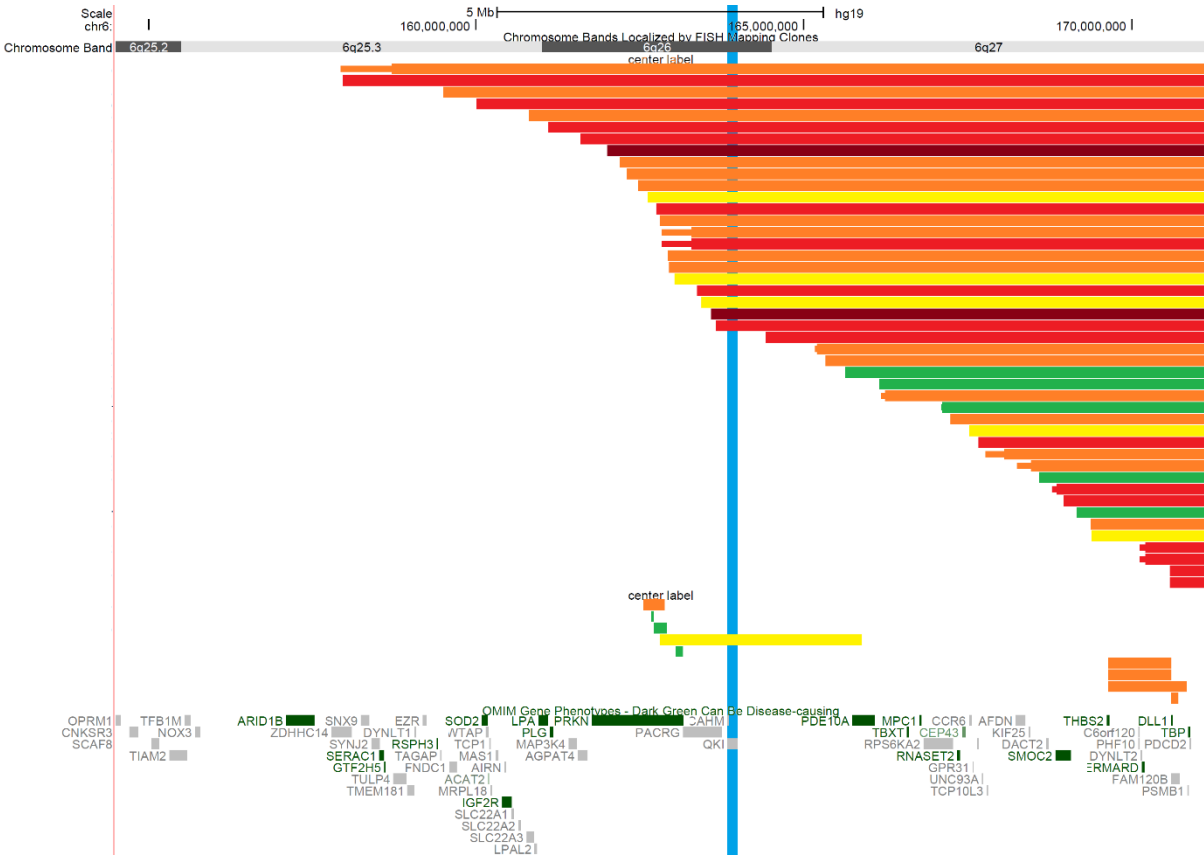
Figure S2. Delayed Myelination

Figure S3. Dental problems

Supplementary Table

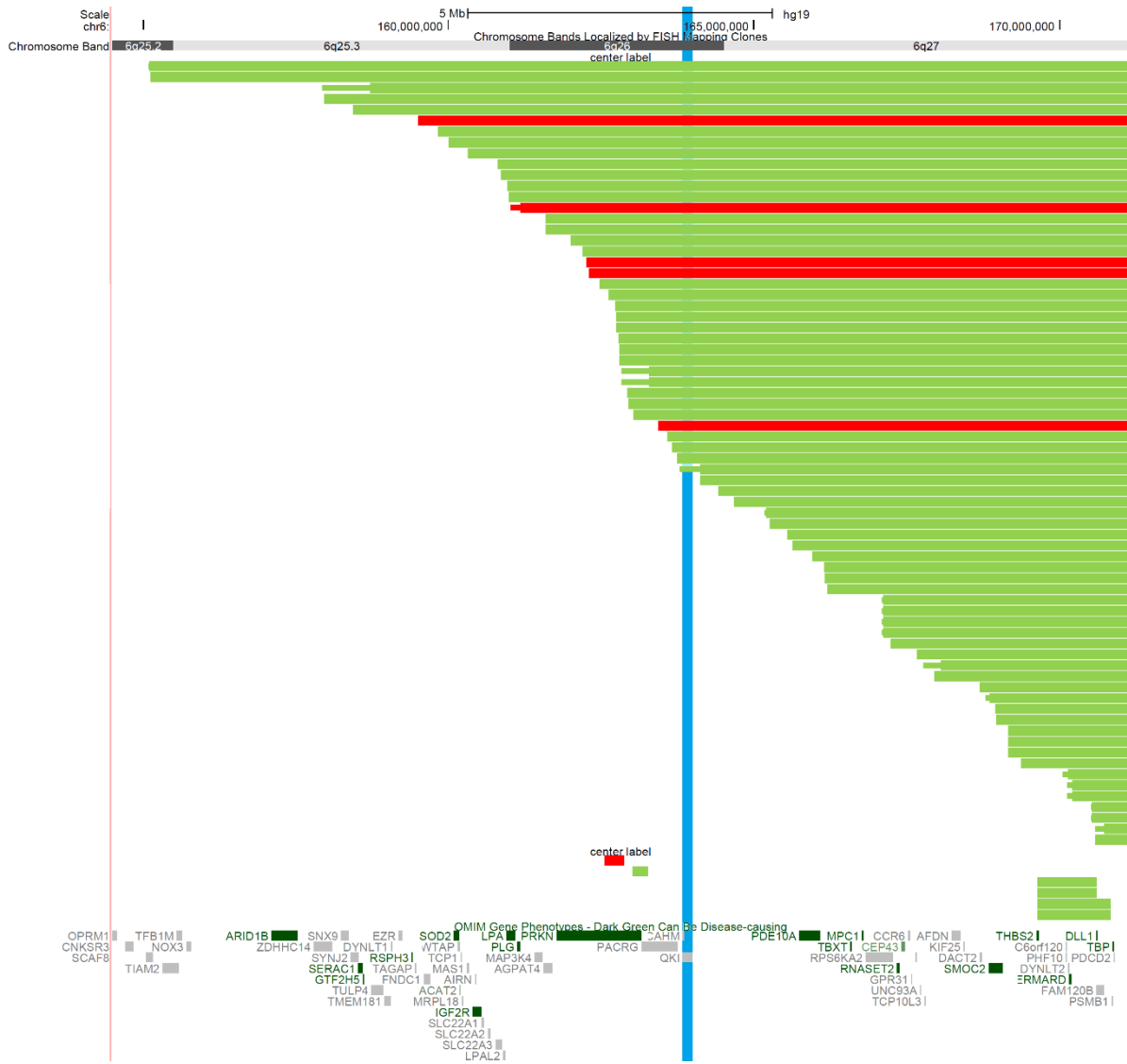
Table S1. HI and pLI scores

Figure S1. Developmental delay in children older than 2 years of age



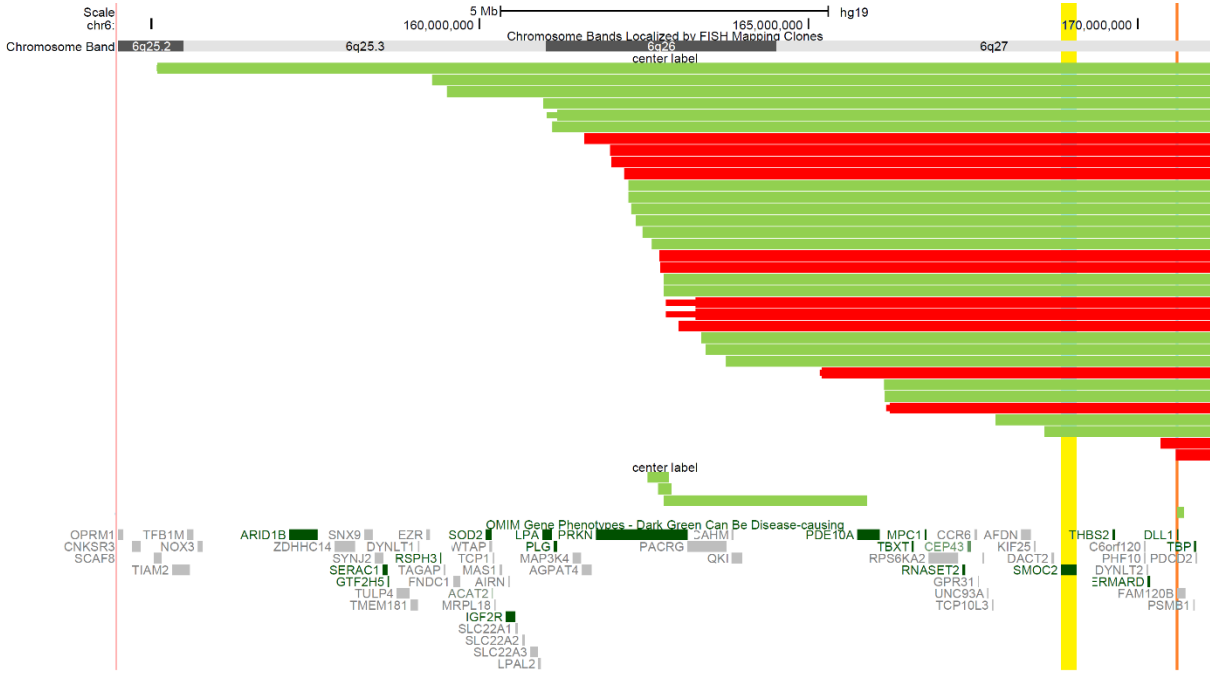
The deletion in each patient for whom development could be categorised is represented by a horizontal bar. Development is categorised as normal (IQ >85, green bar), borderline (IQ 70-85, yellow), mild (IQ 50-70, orange), moderate (IQ 30-50, red) or severe (IQ <30, dark red) delay. The gene *QKI* is represented by a vertical blue bar (see manuscript Discussion).

Figure S2. Delayed Myelination



The deletion in each patient for whom delayed myelination was present (red) or absent (green) is represented by a horizontal bar. The gene *QKI* is represented by a vertical blue bar (see manuscript Discussion).

Figure S3. Dental problems



The deletion in each patient for whom dental problems were present (red) or absent (green) is represented by a horizontal bar. The gene *SMOC2* is represented by a vertical yellow bar and the gene *DLL1* is represented by a vertical orange bar. *SMOC2* is related to dental abnormalities in pathogenic homozygous variants (see manuscript Results and Discussion).

Table S1. HI and pLI scores

Location	Gene	MIM*	% HI	pLI	
6q27	<i>PDCD2</i>	600866	69.48	0.00	
	<i>TBP</i>	600075	6.48	0.02	
	<i>PSMB1</i>	602017	33.38	0.97	
	<i>FAM120B</i>	612266	80.03	0.00	
	<i>DLL1</i>	606582	4.65	1.00	
	<i>ERMARD (C6orf70)</i>	615532	84.86	0.00	
	<i>DYNLT2</i>	186977	-	0.00	
	<i>PHF10</i>	613069	18.13	0.00	
	<i>C6orf120</i>	616987	92.18	-	
	<i>THBS2</i>	188061	59.96	0.56	
	<i>SMOC2</i>	607223	55.41	0.00	
	<i>DACT2</i>	608966	93.50	0.01	
	<i>KIF25</i>	603815	95.70	0.00	
	<i>AFDN</i>	159559	-	1.00	
	<i>TCP10L3</i>	187020	-	0.00	
	<i>UNC93A</i>	607995	85.97	0.00	
	<i>GPR31</i>	602043	91.50	0.02	
	<i>CCR6</i>	601835	84.13	0.01	
	<i>CEP43</i>	605392	-	0.00	
	<i>RNASET2</i>	612944	88.27	0.00	
	<i>RPS6KA2</i>	601685	64.44	0.02	
	<i>MPC1</i>	614738	49.44	0.04	
	<i>TBXT</i>	601397	-	0.06	
	<i>PDE10A</i>	610652	52.14	1.00	
	6q26	<i>QKI</i>	609590	4.10	0.75
		<i>CAHM</i>	615930	-	-
<i>PACRG</i>		608427	10.61	0.00	
<i>PRKN</i>		602544	0.77	0.00	
<i>AGPAT4</i>		614795	61.98	0.10	
<i>MAP3K4</i>		602425	59.19	1.00	
<i>PLG</i>		173350	40.11	0.01	
<i>LPA</i>		152200	78.22	0.00	
6q25.3	<i>LPAL2</i>	611682	-	-	
	<i>SLC22A3</i>	604842	49.06	0.00	
	<i>SLC22A2</i>	602608	63.53	0.00	
	<i>SLC22A1</i>	602607	75.70	0.00	
	<i>AIRN</i>	604893	-	-	
	<i>IGF2R</i>	147280	53.96	1.00	
	<i>MAS1</i>	165180	28.09	0.00	
	<i>MRPL18</i>	611831	49.78	0.00	
	<i>TCPI1</i>	186980	5.10	1.00	
	<i>ACAT2</i>	100678	53.11	0.00	
	<i>WTAP</i>	605442	6.76	1.00	
	<i>SOD2</i>	147460	0.99	0.15	
	<i>FNDC1</i>	609991	75.28	0.00	
	<i>TAGAP</i>	609667	82.32	0.85	

	<i>RSPH3</i>	615876	86.62	0.00
	<i>EZR</i>	123900	8.64	0.18
	<i>DYNLT1</i>	601554	66.63	0.00
	<i>TMEM181</i>	613209	67.29	0.01
	<i>GTF2H5</i>	608780	30.21	0.05
	<i>SERAC1</i>	614725	61.19	0.00
	<i>SYNJ2</i>	609410	63.42	0.00
	<i>SNX9</i>	605952	40.36	0.71
	<i>ZDHHC14</i>	619295	29.53	0.72
	<i>ARID1B</i>	614556	14.17	1.00
	<i>NOX3</i>	607105	38.77	0.00
	<i>TFB1M</i>	607033	53.74	0.00
6q25.2	<i>TIAM2</i>	604709	53.43	0.68
	<i>SCAF8</i>	616024	25.56	1.00

All OMIM genes studied, extending from 6q27 to 6q25.2 (16 Mb). Predicted HI-genes are highlighted in bold. The HI and pLI scores were derived from <https://decipher.sanger.ac.uk> in May 2021