

1 **Title page**

2

3 **Title:** The phenotypic spectrum of terminal 6q deletions based on a large cohort derived from social  
4 media and literature: a prominent role for *DLL1*

5

6 Aafke Engwerda<sup>1</sup>, Wilhelmina S. Kerstjens-Frederikse<sup>1</sup>, Nicole Corsten-Janssen<sup>1</sup>, Trijnie Dijkhuizen<sup>1</sup>  
7 and Conny M. A. van Ravenswaaij-Arts<sup>1,2</sup>

8

9

10 <sup>1</sup>University of Groningen, University Medical Center Groningen, Department of Genetics, Groningen,  
11 the Netherlands

12 <sup>2</sup>ATN/Jonx, Groningen, the Netherlands

13

14

15 Author to whom correspondence should be addressed:

16 Conny M.A. van Ravenswaaij-Arts

17 Department of Genetics, University Medical Center Groningen,

18 PO Box 30.001, 9700 RB Groningen, the Netherlands

19 Telephone: +31 50 361700

20 [c.m.a.van.ravenswaaij@umcg.nl](mailto:c.m.a.van.ravenswaaij@umcg.nl)

21

22

23 **Abstract**

24 **Background:** Terminal 6q deletions are rare, and the number of well-defined published cases is  
25 limited. Since parents of children with these aberrations often search the internet and unite via  
26 international social media platforms, these dedicated platforms may hold valuable knowledge about  
27 additional cases. The Chromosome 6 Project is a collaboration between researchers and clinicians at  
28 the University Medical Center Groningen and members of a Chromosome 6 support group on  
29 Facebook. The aim of the project is to improve the surveillance of patients with chromosome 6  
30 aberrations and the support for their families by increasing the available information about these  
31 rare aberrations. This parent-driven research project makes use of information collected directly  
32 from parents via a multilingual online questionnaire. Here, we report our findings on 93 individuals  
33 with terminal 6q deletions and 11 individuals with interstitial 6q26q27 deletions, a cohort that  
34 includes 38 newly identified individuals.

35 **Results:** Using this cohort, we can identify a common terminal 6q deletion phenotype that includes  
36 microcephaly, dysplastic outer ears, hypertelorism, vision problems, abnormal eye movements,  
37 dental abnormalities, feeding problems, recurrent infections, respiratory problems, spinal cord  
38 abnormalities, abnormal vertebrae, scoliosis, joint hypermobility, brain abnormalities  
39 (ventriculomegaly/hydrocephaly, corpus callosum abnormality and cortical dysplasia), seizures,  
40 hypotonia, ataxia, torticollis, balance problems, developmental delay, sleeping problems and  
41 hyperactivity. Other frequently reported clinical characteristics are congenital heart defects, kidney  
42 problems, abnormalities of the female genitalia, spina bifida, anal abnormalities, positional foot  
43 deformities, hypertonia and self-harming behaviour. The phenotypes were comparable up to a  
44 deletion size of 7.1 Mb, and most features could be attributed to the terminally located gene *DLL1*.  
45 Larger deletions that include *QKI* (>7.1 Mb) lead to a more severe phenotype that includes additional  
46 clinical characteristics.

47

48 **Conclusions:** Terminal 6q deletions cause a common but highly variable phenotype. Most clinical  
49 characteristics can be linked to the smallest terminal 6q deletions that include the gene *DLL1* (>500  
50 kb). Based on our findings, we provide recommendations for clinical follow-up and surveillance of  
51 individuals with terminal 6q deletions.

52

53 **Keywords:** chromosome 6, terminal 6q deletion, 6q26, 6q27, *DLL1*, *QKI*, social media, patient  
54 participation, parent-reported phenotype

55

56

## 57 **Background**

58 Terminal 6q deletions are a variable group of chromosome disorders, with the largest deletions  
59 extending from 6q25.2 to 6qter (up to 16 Mb in size) and the smallest deletions restricted to the  
60 most distal band 6q27 (as small as 390 kb in size)<sup>1</sup>. As these deletions are rare, there is only limited  
61 information about their effect on the clinical phenotype. This lack of knowledge impairs the ability of  
62 health professionals to guide these individuals and their families.

63 To date, two large reviews on terminal 6q deletions have been published. Hopkin et al.  
64 (1997) described 26 individuals with deletions in the 6q25q27 region. These individuals were  
65 diagnosed by conventional cytogenetic methods, and interstitial deletions including only the  
66 proximal part of 6q27 were also considered to be terminal<sup>2</sup>. Lee et al. (2011) described another 28  
67 individuals with pure terminal 6q deletions diagnosed by conventional cytogenetic methods or array  
68 CGH, with all findings confirmed by FISH<sup>3</sup>. The individuals described in these two reviews presented  
69 with a variable phenotype including brain abnormalities, hydrocephalus, microcephaly, seizures,  
70 intellectual disability, hyperactivity/attention deficit hyperactivity disorder (ADHD), hypotonia, club  
71 feet, genital hypoplasia, retinal abnormalities, cleft palate, dimpling on elbows and knees and facial  
72 dysmorphisms including ear anomalies, broad nasal tip, prominent nasal bridge, epicanthic folds and  
73 short palpebral fissures<sup>2,3</sup>.

74           Whereas earlier studies mostly used conventional cytogenetic methods, detailed microarray  
75 techniques are now the routine diagnostic method. The robust and detailed microarray technique  
76 allows for reliable comparisons of cytogenetic results from all over the world. In contrast,  
77 international collection of detailed phenotypes lags behind the collection of genetic data because  
78 only a minority of rare chromosomal aberration cases are submitted to international databases like  
79 DECIPHER (<https://www.deciphergenomics.org>), and case reporting relies on health professionals  
80 having the time and willingness to submit information. As a result, clinical information is often  
81 incomplete.

82           Nowadays parents of individuals with a rare disorder often start searching the internet for  
83 more information, and these parents frequently unite on social media platforms. In 2013, we started  
84 the Chromosome 6 Project, a successful collaboration with a Chromosome 6 parent support group on  
85 Facebook<sup>4</sup>. The Chromosome 6 Project allowed us to study detailed clinical information for 35 newly  
86 identified individuals with terminal 6q deletions. The addition of information about 58 individuals  
87 reported in literature who were diagnosed by a high-resolution cytogenetic technique allowed us to  
88 describe the phenotype based on eight subgroups with different sizes of terminal 6q deletions. We  
89 could also describe the phenotype of interstitial 6q26 and 6q27 deletions by including three newly  
90 identified individuals and eight cases from the literature. Where relevant, we discuss the candidate  
91 genes for specific clinical characteristics.

92           Our large cohort of 93 individuals with terminal 6q deletions allowed us to describe the most  
93 clinically relevant phenotype and define the effect of deletion size on this phenotype. Based on this  
94 data, it appears that deletion of the gene *DLL1* (Delta-Like Canonical Notch Ligand 1, MIM\*606582)  
95 plays the most prominent causal role in the terminal 6q deletion phenotype. Our clinical description  
96 also leads to recommendations for clinical follow-up and surveillance that will enable healthcare  
97 professionals to better inform families and provide the best possible guidance to individuals with  
98 terminal 6q deletions.

99

## 100 **Methods**

101 To describe the terminal 6q deletion phenotype, we collected detailed genotype and phenotype data  
102 on as many individuals as possible. The recruitment of individuals via social media, collection of  
103 clinical information directly from parents (parent cohort), collection of patients extracted from the  
104 literature (literature cohort) and data analysis were performed as described previously<sup>4</sup> and are  
105 outlined in short below.

106

### 107 **Parent cohort**

108 Individuals were informed about the Chromosome 6 Project and approached to participate via  
109 Facebook (Chromosome 6 Facebook group), Twitter (@C6study) and our website  
110 (<https://www.chromosome6.org>). Patients or their legal representatives could participate by signing  
111 up via our secured website. Participants received a personal account for the online Chromosome 6  
112 Questionnaire if there was an isolated chromosome 6 aberration and a microarray report was  
113 available. Informed consent was obtained through the questionnaire. This procedure was ethically  
114 waived by the accredited Medical Ethics Review Committee of the University Medical Center  
115 Groningen.

116 Genotype data was extracted from the microarray reports, which were uploaded as part of  
117 the sign-up procedure. These microarray analyses were performed in diagnostic laboratories using  
118 different platforms. The UCSC LiftOver Tool was used to convert the microarray results to  
119 GRCh37/hg19, and the UCSC genome browser was used to visualise the results  
120 (<http://genome.ucsc.edu>).

121 In the current study we focus on participants with a terminal 6q deletion: a deletion  
122 extending to the end of 6q, defined as including the most distally located gene (*PDCD2*,  
123 MIM\*600866), or an interstitial deletion within the 6q26q27 region (161,000,001–171,115,067).

124 Phenotype information on pregnancy and birth, congenital abnormalities, relevant  
125 dysmorphic features, development, behaviour and health of the child was collected via the

126 multilingual online Chromosome 6 Questionnaire, which was constructed with the MOLGENIS  
127 toolkit<sup>5</sup>. Clinical photographs and additional consent for publication were collected. Data collected  
128 from individuals in the parent cohort was submitted to the DECIPHER database  
129 (<https://decipher.sanger.ac.uk>) IDs 489709–489746.

130

### 131 **Literature cohort**

132 Case reports involving terminal 6q deletions were collected using PubMed and the following search  
133 criteria: (deletion or monosomy) and (6q26 or 6q27 or terminal 6q). The references were then  
134 checked for additional relevant case reports. Publications reporting detailed clinical information and  
135 microarray results or comparably detailed breakpoint analyses were included. Clinical information  
136 was extracted from the reports using the items of the Chromosome 6 Questionnaire.

137

### 138 **Participant characteristics and genotypes**

139 Up to September 2021, the Chromosome 6 Questionnaire was completed and submitted by 129  
140 parents, and this included information on 38 individuals with aberrations in the region of interest for  
141 this paper. Of these 38, 35 individuals (27 females and 8 males) had a terminal 6q deletion. Another 3  
142 individuals (2 females and 1 male) had an interstitial deletion within the 6q26q27 region. Our  
143 literature cohort comprises 58 terminal 6q deletion cases (34 females and 24 males) and 8 interstitial  
144 6q26q27 cases (2 females and 6 males) derived from 29 published papers<sup>1,6–33</sup>. In total, 93 terminal  
145 6q deletion cases and 11 interstitial 6q26q27 cases were collected. The median age (years;months) of  
146 individuals in the parent cohort was 4;6 (range 0;6–32;9) and 12;0 (range 0;0–57;0) in the literature  
147 cohort. Data on fetuses was included both in the parent cohort (1 foetus; 23 weeks gestation) and  
148 the literature cohort (7 fetuses; median 24 (range 14–30) weeks gestation). For six out of eight of  
149 these cases, it was known that the pregnancy was terminated. For the foetus included in the parent  
150 cohort, the parents gave us consent to fill out the Chromosome 6 Questionnaire based on the

151 ultrasound and autopsy results. Since the pregnancy was terminated, not all questions could be  
152 completed.

153 Although we focused on isolated terminal and interstitial deletions in the 6q26q27 region,  
154 some small additional rearrangements of other chromosomes were included based on their size and  
155 gene content.

156

### 157 **Data analysis**

158 Clinical and behavioural characteristics were described as being present, absent or unknown. They  
159 are presented here as present/known, where known indicates knowledge of presence or absence.  
160 The developmental delay (intelligent quotient (IQ)) was categorised as normal (>85), borderline (70–  
161 85), mild (50–70), moderate (30–50) or severe (<30) for individuals above the age of 2 years. This was  
162 based on formal IQ tests or, if these were not available, the mean of the developmental quotients for  
163 the milestones ‘walking independently’ and ‘using two-word sentences’. The developmental  
164 quotients were calculated as the 50<sup>th</sup> centile of the population age of achievement for that milestone  
165 divided by the age of that achievement by the participant times 100. The 50<sup>th</sup> centiles of the  
166 population age of achievement for the milestones ‘walking independently’ and ‘using two-word  
167 sentences’ are 12<sup>34</sup> and 21 months<sup>35</sup>, respectively. For specific milestones, the age and range of  
168 achievement were presented, and we used a Mann-Whitney U-test to calculate whether there was a  
169 significant difference in the age of milestone achievement between individuals with smaller (those  
170 not including the gene *QKI*) and larger (those including *QKI*) terminal deletions.

171 The clinical characteristics of all terminal deletions were described as one group, but we also  
172 describe subgroups made to provide information on differently sized deletions and interstitial  
173 deletions separately. The terminal 6q deletion subgroups were based on the number of genes  
174 involved with a predicted haploinsufficiency (HI) effect. To determine whether genes had a predicted  
175 HI-effect, we used HI- and loss-of-function intolerance (pLI) scores as described previously  
176 <sup>4</sup>(<https://www.deciphergenomics.org>)<sup>36</sup> (<http://exac.broadinstitute.org>)<sup>37</sup>, see Table S1. Genes with a

177 HI score <10% and/or a pLI score  $\geq 0.9$  were considered HI-genes. The terminal 6q26q27 region  
178 contains eight such HI-genes: *TBP*, *PSMB1*, *DLL1*, *AFDN*, *PDE10A*, *QKI*, *PRKN* and *MAP3K4*. This  
179 allocation resulted in eight terminal 6q deletion subgroups: T-*PSMB1* (including *PSMB1* and *TBP*), T-  
180 *DLL1*, T-*AFDN*, T-*PDE10A*, T-*QKI*, T-*PRKN*, T-*MAP3K4* and a residual group (T-R) that includes deletions  
181 extending beyond 6q26 and including the HI-gene *IGF2R* (Figure 1). Two subgroups of interstitial  
182 deletions were described: interstitial deletions of 6q26 (I-6q26) and interstitial deletions of 6q27 (I-  
183 6q27) (Figure 1). The phenotypes of individuals with a terminal 6q deletion due to a ring  
184 chromosome were compared to those with a simple terminal deletion. We also investigated how  
185 often breakpoints in the fragile site *FRAE6* (6q26) were present in terminal 6q deletions in order to  
186 explore its involvement in breakpoint occurrence.

187

## 188 **Results**

189 All individuals were assigned to one of the ten subgroups based on the number of HI-genes present  
190 in their terminal 6q deletion or the cytogenetic location of the interstitial deletion. Figure 1 visualises  
191 the deletions, subgroups and HI-genes. The main genotype characteristics of the subgroups are  
192 summarised in Table 1. The phenotype information is summarised in Table 2 (see supplementary  
193 Table S2, for details). Information on development is given in Table 3 and visualised in Figure 2 and  
194 Figure S1. Below, we provide a phenotype description for the whole group of terminal 6q deletions,  
195 with subgroups highlighted when specific clinical characteristics were only seen in the subgroups  
196 with larger terminal deletions. Descriptions of the most prominent characteristics in the interstitial  
197 6q26q27 deletions are given separately. In the Discussion, we briefly consider the role of the deleted  
198 genes in the phenotype, if applicable.

199

### 200 **The terminal 6q deletion phenotype**



201 The pregnancy was characterised by intrauterine growth restriction in 30% of individuals and  
202 reduced foetal movements in 26% of individuals. Prolonged neonatal jaundice was reported in 9/30  
203 new-borns with a terminal deletion including *PDE10A* (larger than 5 Mb).

204 Many individuals had a small head size (<p10) (60%) and/or plagiocephaly (47%). Some  
205 individuals had a short body stature (<p10) (30%). Dysmorphisms included hypertelorism (51%),  
206 dysplastic ears (51%) and dental abnormalities (38%). A cleft lip and/or palate was seen in three  
207 individuals with larger deletions, see Table S2. One individual (T-R) also had a choanal stenosis.

208 Decreased visual acuity (67%) was mostly mild (16/30). Abnormal eye movements (56%)  
209 included strabismus (24/30) and nystagmus (11/30). Aplasia/hypoplasia of the optic nerve was seen  
210 in 4/26 individuals with a deletion including at least *PRKN* (larger than 7.9 Mb). Microphthalmos (2/4)  
211 and coloboma (1/4) were only seen with the largest deletions, subgroup T-R (larger than 10.5 Mb).

212 Feeding problems (72%) were common, with oral aversion (61%), chewing difficulties (43%),  
213 dysphagia (39%) and gastroesophageal reflux (26%) most often reported. Seven individuals needed a  
214 gastrostomy, and all seven had a deletion including *PRKN*. Bowel problems (43%), often constipation  
215 (32%), were also reported, but never for the smallest deletions, subgroup T-DLL1 (smaller than 2.7  
216 Mb). Five out of 24 individuals with a deletion including the gene *QKI* (larger than 7.1 Mb) had an  
217 abnormality of the anus, either anal atresia (n=3) or an ectopic anus (n=1).

218 Recurrent infections (42%) were often reported, including of the upper respiratory tract  
219 (13/13). Respiratory problems were reported in 26% of the individuals. Sleep apnoea (n=3) was only  
220 present in deletions including at least *QKI*. Congenital heart defects (CHDs) (12/42), kidney problems  
221 (7/37) and abnormalities of the female genitalia (6/27) were only reported in individuals with a  
222 deletion including *AFDN* (larger than 2.7 Mb).

223 A sacral dimple was reported in 23/31 individuals with a deletion including *AFDN*. Spina bifida  
224 was seen in 5/21 individuals with a deletion including *PRKN* (larger than 7.9 Mb). Scoliosis (6/39) and  
225 abnormal vertebrae (8/38, including hemivertebrae in n=4) were seen throughout the whole group.  
226 Joint hypermobility was present in 64% of all individuals, and hip dysplasia was reported in 6/15

227 individuals with a *PDE10A* deletion. In individuals with a deletion including *AFDN*, a positional foot  
228 deformity (8/14) and pes planus (5/14) were reported.

229 Almost all individuals had brain abnormalities on MRI or CT (91%). Those most often reported  
230 were ventriculomegaly/hydrocephaly (51/72), corpus callosum abnormalities (31/72), abnormalities  
231 of the cerebellum (18/72) and cortical dysplasia (15/72). In literature, other brain abnormalities were  
232 reported that were not included in the Chromosome 6 Questionnaire, these included colpocephaly  
233 (n=8), periventricular nodular heterotopia (PNH) (n=6), hypoplasia of the hippocampi (n=5) and a  
234 large cisterna magna (n=5), and all were seen throughout all subgroups<sup>7,9,20,26,28</sup>. Seizures (67%)  
235 (generalised (16/44) and focal onset (20/44)) were often reported, and epilepsy was formally  
236 diagnosed in 83% of individuals with seizures. Hypotonia (83%) was very common. Hypertonia was  
237 reported in 7/29 individuals, and most of these individuals had a deletion including at least *PRKN*.  
238 3/17 individuals with a *PRKN* deletion were reported with spasticity. Balance problems (71%) were  
239 often seen. Torticollis (26%), ataxia (38%) and spinal cord abnormalities (39%) were reported  
240 throughout the whole group, as well as abnormal pain sensation (30%) and sensory integration  
241 disorder (30%).

242 Behaviour was most often described as being social (60%), helpful (29%), easily upset (40%)  
243 and hyperactive (36%). Seven out of 22 individuals with a *PRKN* deletion showed self-harming  
244 behaviour. Half of the individuals had sleeping problems (50%), most frequently insomnia (67%).

245 Almost all individuals had developmental delay (92%), see Table 3 and Figure S1. Five  
246 individuals had no developmental delay, and their ages ranged from 5–49 years and their deletion  
247 sizes from 2–5.5 Mb, see Figure S1<sup>16,20</sup>. The level of developmental delay varied considerably within  
248 all the subgroups, but was mostly mild to moderate. Individuals without a deletion of *QKI* (deletion  
249 smaller than 7.1 Mb) had normal development to moderate delay, and individuals with a deletion  
250 including *QKI* (larger than 7.1 Mb) had borderline to severe developmental delay.

251 Ages of achievement for certain milestones are summarised in Table 4 and visualised in  
252 Figure 2. All children with a deletion not including *QKI* (smaller than 7.1 Mb) were able to perform

253 the milestone ‘walking independently’ at age 3 years and the milestone ‘using two-word sentences’  
254 at age 4 years. For individuals with larger deletions including *QKI* (larger than 7.1 Mb), some needed  
255 more time to achieve these milestones and one individual was not yet able to walk independently at  
256 age 12 years. The milestones ‘roll over’, ‘sit up unaided’ and ‘pull up in a standing position’ were  
257 achieved significantly earlier by children with deletions that did not include *QKI*. Five out of 22  
258 children reached the milestone ‘fully toilet trained during the day’ at age 4 years.

259 Two out of seven index patients with an inherited deletion (subgroups T-DLL1 and T-AFDN),  
260 inherited this from an independently functioning parent (1 maternal, 1 paternal)<sup>20</sup>.

261 Nineteen out of 93 individuals had reached adulthood, and their median age was 32 years  
262 (range 18–57). Detailed information on adult functioning could only be collected for two adults from  
263 the parent cohort. One individual needed help with all tasks and was not able to take care of herself  
264 (T-PRKN). The other adult (T-PRKN) was able to perform simple tasks (for example handling a phone  
265 and performing some daily housework) but needed assistance with most tasks.

266 Some clinical characteristics were reported in literature that were not part of the  
267 Chromosome 6 Questionnaire. In addition to the brain abnormalities reported above, micrognathia  
268 and high arched palate were reported in 13 and 14 individuals in literature, respectively<sup>1,7–  
269 10,13,19,23,26,28</sup>. These characteristics could also not be related to deletion size.

270

### 271 **Interstitial 6q26 and 6q27 deletion phenotype**

272 All five interstitial 6q27 deletion individuals were derived from literature, and the only deleted HI-  
273 gene they had in common was *DLL1* (Figure 1). Their phenotype was mostly characterised by brain  
274 abnormalities (ventriculomegaly/ hydrocephaly, corpus callosum abnormality and cortical dysplasia),  
275 epilepsy and mild developmental delay. Other characteristics reported were small head size,  
276 strabismus, horseshoe kidney, joint hypermobility, hypotonia, ataxia and autistic behaviour.

277 There were three interstitial 6q26 deletion individuals in the parent cohort and another three  
278 in the literature cohort. *PRKN* was involved in all deletions, and the largest deletion also

279 encompassed *QKI* and *PDE10A* (Figure 1). Individuals with 6q26 interstitial deletions were mostly  
280 characterised by a normal head size and normal body stature, brain abnormalities (delayed  
281 myelination, ventriculomegaly/hydrocephaly), vision problems, feeding problems, an abnormal  
282 curvature of the spine (scoliosis/kyphosis), hypotonia and insomnia. Other characteristics reported  
283 were atrial septal defect (ASD), hydronephrosis, constipation, spina bifida, epilepsy and sleep  
284 apnoea. Their behaviour was mostly characterised by social behaviour, hyperactivity, attention  
285 deficit disorder and autistic behaviour/disorder. One individual presented self-harming behaviour.  
286 Three individuals had no developmental delay, one had borderline delay and one had mild delay  
287 (Figure S1 and Table 3).

288

### 289 **Ring 6 phenotype**

290 For two individuals, their terminal deletion was known to be the result of a ring chromosome 6<sup>23,32</sup>.  
291 The ring also included a small terminal 6p deletion without phenotypic consequences<sup>38</sup>. There were  
292 no differences in the phenotype between the individuals with a ring chromosome and individuals  
293 with a comparable simple deletion.

294

### 295 **Effect of the common fragile site *FRA6E***

296 None of the 93 terminal deletions had a start breakpoint within the fragile site *FRA6E* (Figure 1).

297

### 298 **Discussion**

299 Here we have reported our findings on rare chromosome 6q deletions in the region 6q26q27, which  
300 are mainly terminal 6q deletions. Below, we summarise the most clinically relevant characteristics  
301 and provide advice about additional medical examinations, follow-up and surveillance. We also  
302 briefly discuss the genes involved in the deletions and, based on what is known about these genes,  
303 how they could be linked to the observed clinical characteristics. We found that there is only a minor  
304 effect of deletion size on the clinical phenotype, resulting in a common (but variable) phenotype

305 seen in all terminal 6q deletion individuals. This commonality could be explained by the prominent  
306 role of the distally located gene *DLL1*, with only individuals with deletions larger than 7.1 Mb clearly  
307 showing additional or more severe clinical characteristics.

308 In our cohorts there is a clear common terminal 6q deletion phenotype characterised by a  
309 small head size, dysplastic outer ears, hypertelorism, vision problems, abnormal eye movements,  
310 dental abnormalities, feeding problems, recurrent infections, respiratory problems, spinal cord  
311 abnormalities, abnormal vertebrae, scoliosis, joint hypermobility, brain abnormalities  
312 (ventriculomegaly/hydrocephaly, corpus callosum abnormality and cortical dysplasia), seizures,  
313 hypotonia, ataxia, torticollis, balance problems, developmental delay, sleeping problems and  
314 hyperactivity. Since these characteristics are common in the affected individuals, it is most likely that  
315 the phenotype is caused by haploinsufficiency of the most distally located genes. Nonetheless, the  
316 phenotype is very variable, and not all characteristics are seen in all individuals.

317 The three most distally located HI-genes that could contribute to this common 6q terminal  
318 deletion phenotype are *TBP* (Tata Box-Binding Protein, MIM\*600075), *PSMB1* (Proteasome Subunit  
319 Beta-Type 1, MIM\*602017) and *DLL1*. *TBP* is known to cause late-onset neurological disorders such  
320 as spinocerebellar ataxia (MIM#607136) and Parkinson's disease (MIM#168600) through expansion  
321 of a CAG repeat<sup>39</sup>, but it is unclear whether loss of function of one allele has a phenotypic affect.  
322 Mice haploinsufficient for *Tbp* did not show any abnormalities<sup>40</sup>, and no pathogenic loss-of-function  
323 variants have been reported in humans. For the gene *PSMB1*, no pathogenic heterozygous variants  
324 have been reported. Recently, a presumed pathogenic homozygous missense variant was reported  
325 resulting in microcephaly, developmental delay and short stature in two sisters, aged 22 and 35  
326 years<sup>41</sup>. These clinical characteristics are present in our cohort but also appear in individuals with an  
327 interstitial 6q27 deletion that did not involve *PSMB1*<sup>7,29</sup>. Furthermore, there are multiple individuals  
328 with a deletion including both *TBP* and *PSMB1* in the database of genomic variance (DGV)<sup>42</sup>. The  
329 presence of these deletions in people with a normal or unrelated phenotype makes it unlikely that  
330 *TBP* or *PSMB1* play a major role in the terminal 6q deletion phenotype.

331

332 **DLL1**

333 The third distally located HI-gene of interest for the common 6q terminal deletion phenotype is *DLL1*.  
334 Recently, Fischer-Zirnsak et al. (2019) described 14 patients with pathogenic heterozygous variants of  
335 *DLL1* and one patient with a deletion including *DLL1*. These patients presented with hypotonia,  
336 scoliosis and a neurodevelopmental phenotype including variable brain abnormalities  
337 (ventriculomegaly/hydrocephaly, corpus callosum abnormality and cortical dysplasia), seizures and  
338 autism spectrum disorder<sup>29</sup>. This phenotype was registered in OMIM as neurodevelopmental  
339 disorder with nonspecific brain abnormalities and with or without seizures (NEDBAS,  
340 OMIM#618709). Additionally, the following clinical characteristics were reported in at least one  
341 patient with a heterozygous *DLL1* variant: PNH, large cisterna magna, strabismus, feeding problems,  
342 sleep apnoea, recurrent infections, hemivertebrae, sacral dimple, joint hypermobility, ataxia and  
343 hyperactivity<sup>29</sup>. As all these clinical characteristics are also seen in our terminal 6q deletion cohorts, it  
344 is very likely that haploinsufficiency of *DLL1* makes an important contribution to the common  
345 terminal 6q deletion phenotype. Lesieur-Sebellin et al. characterised the features detected by  
346 prenatal ultrasound in 22 foetuses with terminal 6q deletions and pointed out the gene *DLL1* as the  
347 major contributor to the detected phenotype<sup>43</sup>.

348 In 2005, Eash et al. reported a patient (Eash\_1) with the smallest terminal deletion seen thus  
349 far, 390kb, which only included the HI-genes *TBP* and *PSMB1*<sup>1</sup>. This patient's phenotype was  
350 comparable to the common terminal 6q deletion phenotype we describe and included microcephaly,  
351 brain abnormalities (corpus callosum abnormality, hydrocephaly), seizures, vertebral abnormalities,  
352 hypotonia and developmental delay (Tables 2, 3 and S2; subgroup T-PSMB1). Most other  
353 characteristics of the common terminal 6q deletion phenotype were not reported as being present or  
354 absent in the Eash et al. case. The breakpoints of this deletion were defined by BAC and PAC FISH  
355 clones at approximately 500 kb intervals<sup>1</sup>. If the possible maximum size of the deletion is taken into  
356 consideration (Figure 1), the *DLL1* gene could actually be part of the deletion. We tried contacting

357 the authors about additional genetic studies performed for this individual, but without success.

358 Considering the overlapping phenotype and the ambiguities in breakpoint definition, we expect that

359 *DLL1* is also part of, or influenced by, the deletion in this case.

360 *DLL1* codes for a ligand of the Notch receptor. The Notch signalling developmental pathway is  
361 involved in cell-to-cell communication and cell patterning and differentiation. Notch signalling plays a  
362 role in the development of multiple organs and tissues, including the somite-derived organs, nervous  
363 system, heart, vasculature, haematopoietic system, cochlea and pancreas<sup>44</sup>. In our cohorts, we did  
364 not clearly see any abnormalities for the four latter organ systems, but the nervous system, somite-  
365 derived organs and heart were affected.

366 In mice, delayed expression of *Dll1* leads to premature cell differentiation, resulting in a  
367 smaller brain and fused vertebrae and ribs<sup>45</sup>. This is in line with the variable brain abnormalities,  
368 microcephaly and abnormalities of the vertebrae seen in our cohorts and in the heterozygous *DLL1*  
369 variant patients reported by Fischer-Zirnsak et al.<sup>29</sup>.

370 CHDs were not reported in the patients by Fischer-Zirnsak et al.<sup>29</sup> and also not seen in our T-  
371 *DLL1* subgroup, so the effect on heart development may not be fully penetrant. We did find CHDs in  
372 larger deletions that include *DLL1*. In these patients, *DLL1* seems the most likely candidate gene to  
373 cause CHDs given its role in the Notch pathway and reported pathogenic variants in *NOTCH1* in  
374 patients with a CHD<sup>46</sup>. During heart development, Notch signalling plays a crucial role in the  
375 formation of the membranous walls of the atrial and ventricular chambers and of the outflow tract<sup>47</sup>.  
376 Interruption in Notch signalling could explain the CHDs in our cohorts: ASDs, VSDs and a coarctation  
377 of the aorta in one individual. Bu et al. reported a patient with an ASD and persistent left superior  
378 vena cava with a heterozygous *DLL1* variant that was classified as likely pathogenic. This *DLL1* variant  
379 patient also had a cleft palate, but no further phenotype information was given<sup>48</sup>. A cleft palate was  
380 also seen in two of our patients, although these two had the largest terminal deletions of our cohort.

381

382 **Other genes**

383 Besides *DLL1*, other genes were also previously proposed to play a role in the terminal 6q deletion  
384 phenotype, especially in larger terminal deletions that display additional clinical characteristics.  
385 Below, we briefly summarise these in the context of our findings.

386 Several genes have been linked to brain abnormalities. *ERMARD* (Endoplasmic Reticulum  
387 Membrane-Associated RNA Degradation Protein, MIM\*615532 (also known as C6orf70)) might be  
388 involved in PNH, since Conti et al. described nine patients with a deletion including *ERMARD* and one  
389 patient with a heterozygous missense variant and PNH<sup>7</sup>. Unfortunately, we do not have information  
390 on the prevalence of PNH for our parent cohort. One patient in our literature cohort did present with  
391 PNH, but her deletion did not include *ERMARD*<sup>28</sup>. *ERMARD* is also not a predicted HI-gene (%HI:  
392 84.86, pLI: 0.00). Based on this information and the fact that the deletion patients presenting with  
393 PNH of Conti et al. all had a deletion that also included *DLL1*, it remains unclear whether  
394 haploinsufficiency of *DLL1* or *ERMARD*, or both, can cause PNH.

395 Peddibhotla et al. suggested two other genes that may be involved in structural brain  
396 abnormalities: *THBS2* (Thrombospondin II, MIM\*188061) and *PHF10* (Phd Finger Protein 10,  
397 MIM\*613069). These genes were deleted in all seven of their terminal 6q deletion patients<sup>9</sup>.  
398 However, both genes are not predicted HI-genes, and no pathogenic variants causing structural brain  
399 abnormalities in humans have been described thus far.

400 Lastly, *QKI* has been linked to brain abnormalities because it plays a role in myelination by  
401 regulating several myelin-specific genes<sup>49</sup>. Five individuals in our terminal 6q deletion cohort  
402 presented with delayed myelination, and all have a *QKI* deletion (Figure S2). One individual with an  
403 interstitial 6q26 deletion also presents with delayed myelination, but *QKI* is not part of her deletion,  
404 and 32 out of 37 patients with a deletion of *QKI* did not have delayed myelination. Likewise, Backx et  
405 al. reported a woman with a reciprocal balanced translocation t(5;6)(q23.1;q26) disrupting the *QKI*  
406 gene, resulting in 50% reduced *QKI* expression, who did not present with myelination problems<sup>50</sup>.  
407 Thus, although it is likely that *QKI* plays a role in myelination, there seems to be incomplete  
408 penetrance of this clinical feature.



409 Vertebral abnormalities are part of the common terminal 6q deletion phenotype, and *TBXT*  
410 (T-Box Transcription Factor T, MIM\*601397) is suggested to play a role in the aetiology of  
411 hemivertebrae<sup>18</sup>. An identical missense variant in this gene was identified in three unrelated patients  
412 with congenital vertebral malformations. This variant was proposed to increase the risk of congenital  
413 vertebral malformations, but not sufficiently on its own<sup>18,51</sup>. Nevertheless, *TBXT* was not deleted in all  
414 patients with hemivertebrae in our cohort. We therefore think this phenotype is more likely linked to  
415 *DLL1*.

416 Dental problems, including abnormal morphology and reduced number of teeth, are also  
417 part of the common terminal 6q deletion phenotype. The gene *SMOC2* is related to dental problems  
418 in carriers of pathogenic homozygous variants, including oligodontia, microdontia and abnormally  
419 shaped teeth<sup>52-54</sup>. However, no pathogenic heterozygous *SMOC2* variants have been identified thus  
420 far, and *SMOC2* was not deleted in all individuals with dental problems in our cohort (Figure S3).

421 CHDs were seen in 12 patients with terminal deletions including at least *AFDN* (deletions  
422 larger than 2.7 Mb). Next to *DLL1*, these deletions also included the gene *THBS2*. In two large CHD  
423 cohort studies, two variants of unknown significance in *THBS2* were found. One patient presented  
424 with a tetralogy of Fallot<sup>55</sup>. The other patient presented with subaortic stenosis, bicuspid aortic valve,  
425 mitral valve stenosis and regurgitation and a coarctation of the aorta<sup>56</sup>. In contrast, our CHD patients  
426 mainly presented with septal defects. Since there is no further proof for the role of *THBS2* in CHD,  
427 and all terminal 6q deletions also include the more likely candidate gene *DLL1*, we regard the  
428 contribution of *THBS2* to CHD in the 6q deletion phenotype as less likely.

429 Recent work showed that *QKI* also plays a role in cardiovascular development and function in  
430 mice and might be involved in cardiomyopathies and cardiovascular disease in humans<sup>57</sup>. One (1/42)  
431 of our patients (aged <5 years) with a deletion including *QKI* was reported to have hypertrophic  
432 cardiomyopathy. Further research is needed to investigate whether there is a relation between  
433 cardiomyopathies and a deletion of *QKI* and thus whether individuals with a *QKI* deletion need to be  
434 screened for cardiomyopathy.

435 Almost all the individuals in our cohort with a deletion including *DLL1* had developmental  
436 delay. Besides *DLL1*, *QKI* seems to mark a tipping point in the extent of developmental delay. Normal  
437 development was seen in a couple of individuals without a deletion of *QKI*, whereas severe  
438 developmental delay was only seen in individuals with a deletion including *QKI* (Figure S1, Table 3).  
439 The woman with a reciprocal balanced translocation t(5;6)(q23.1;q26) disrupting the *QKI* gene  
440 reported by Backx et al. also presented with borderline developmental delay<sup>50</sup>. *QKI* probably has an  
441 additive effect on the level of developmental delay next to the deletion of *DLL1*, which on its own can  
442 lead to moderate developmental delay in small (500 kb) deletions<sup>28</sup>.

443 A range of behavioural problems was seen throughout the whole group of terminal deletions,  
444 with information available for all 34 individuals from the parent cohort but only 8 of 51 literature  
445 cases, foetuses excluded (Table S2). Self-harming behaviour was seen significantly (Fisher's Exact Test  
446  $p=0.03$ ) more often in the larger terminal deletions. Fischer et al. reported autism spectrum disorder  
447 as part of the syndrome linked to *DLL1* haploinsufficiency. In their cohort, 5 out of their 13 *DLL1*  
448 variant patients and their one *DLL1* deletion patient had autism spectrum disorder<sup>29</sup>. In our cohorts,  
449 however, autistic behaviour was present in only 4/33 individuals with a terminal deletion including  
450 *DLL1*. However, autistic behaviour was also seen in 3/5 individuals with an interstitial 6q26 deletion  
451 that did not include *DLL1*, suggesting that *DLL1* haploinsufficiency is not the only cause for autistic  
452 behaviour.

453 The individuals with terminal 6q deletions included in our cohort were grouped based on the  
454 number of predicted HI-genes involved in their deletion. However, only two HI-genes, *DLL1* and *QKI*,  
455 could be linked to some of the observed clinical characteristics. This is reflected in the phenotypic  
456 differences between the patients with deletions smaller and larger than 7.1 Mb.

457

#### 458 **FRA6E**

459 It has been suggested that the *FRA6E* fragile site is the cause of the breakpoints in terminal 6q  
460 deletions<sup>3,12,13</sup>. *FRA6E* is a common fragile site located at 161.71–161.91 Mb in 6q26 (Figure 1).

461 Common fragile sites are associated with hotspots for chromosome aberration breakpoints<sup>58</sup> due to  
462 an impaired replication process at the fragile site. Nevertheless, Palumbo et al. showed that the  
463 replication process at *FRA6E* is not impaired<sup>59</sup>, and we also do not see a clustering of breakpoints  
464 within or near the fragile site in our data.

465

#### 466 **Recommendations for clinical follow-up and surveillance**

467 The common terminal 6q deletion phenotype is highly variable, and not all clinical characteristics are  
468 present in each individual. Therefore clinical follow-up and surveillance should be focused on the  
469 congenital anomalies present and the problems experienced. This also means that the phenotype  
470 should be fully assessed upon diagnosis to establish which of the comorbidities known for this  
471 chromosomal aberration are present in the patient. In Table 5, we present our recommendations for  
472 investigations for terminal 6q deletions <7.1 Mb and for deletions >7.1 Mb including the gene *QKI*.  
473 We recommend that all individuals should be offered a neurological investigation (including an MRI  
474 upon indication), a cardiac ultrasound (at least once), an investigation by an ophthalmologist and an  
475 annual vision assessment at younger ages and upon indication at older ages. As seizures are seen in a  
476 large proportion of the individuals, the threshold should be low for consulting a (paediatric)  
477 neurologist and for performing an EEG. Individuals with hypermobility can benefit from  
478 physiotherapy and medical aids. For individuals with deletions >7.1 Mb, clinicians should also be  
479 aware of the occurrence of cleft palate, anal atresia and sleep apnoea, which are reported in some  
480 individuals and can be treated. Some individuals with deletions >7.1 Mb have spina bifida, although  
481 vertebral abnormalities that could cause scoliosis are seen for all deletion sizes. Performing an X-ray  
482 of the vertebral column can help identify these abnormalities. Besides this specific advice for  
483 individuals with a terminal 6q deletion, appropriate support for feeding, behavioural and sleeping  
484 problems should also be in place.

485           Development was delayed in most individuals, and those with deletions >7.1 Mb needed  
486 more time to achieve developmental milestones than those with deletions <7.1 Mb. Nonetheless, all

487 but one individual did achieve the milestones ‘walking independently’ and ‘using two-word  
 488 sentences’ (Table 4 and Figure 2). As in all neurodevelopmental disorders, the definite aim should be  
 489 to optimise the developmental abilities and quality of life of the individual with a chromosomal  
 490 aberration and their family. Having more detailed information available on what to expect is an  
 491 important step in this process.

492

493 **Table 5.** Clinical recommendations for terminal 6q deletions

Deletion size	<7.1 Mb		>7.1 Mb	
	Upon diagnosis	Follow-up	Upon diagnosis	Follow-up
Full neurological examination, including balance	+	i	+	i
MRI	i	i	i	i
Be aware of seizures	+	+	+	+
EEG	i	i	i	i
Be aware of abnormal pain sensation	+	+	+	+
Vision assessment, including strabismus	+	a / i*	+	a / i*
Be aware of coloboma/optic nerve hypoplasia			+	
Hearing assessment	i	i	i	i
Cardiac ultrasound	+	i	+	i
Be aware of sleep apnoea			+	+
Be aware of cleft (soft) palate			+	
Dental abnormalities	+	i	+	i
Assess feeding problems, including reflux and constipation	+	i	+	i
Be aware of anal atresia			+	
Renal ultrasound	i	i	i	i
Be aware of recurrent respiratory tract infections	+	+	+	+
Be aware of scoliosis	+	+	+	+
X-ray to exclude vertebral abnormalities	i	i	+ <sup>#</sup>	i
Be aware of joint hypermobility	+	+	+	+
Including hip dysplasia	+	i	+	i
Assess development	+	i	+	i
Be aware of sleeping problems	+	+	+	+
Assess behavioural problems	+	i	+	i

494 + = to be performed, a = annual, i = upon indication

495 \*Annually at young age and upon indication at later ages

496 <sup>#</sup>Also be aware of spina bifida occulta

497

498 **Limitations of the study and suggestions for future research**

499 Recruiting parents via social media and collecting phenotypes directly from the parents via the online  
500 Chromosome 6 Questionnaire resulted in an extensive dataset for the parent cohort. However, not  
501 all clinical characteristics were addressed in literature, resulting in missing data. For example, it was  
502 only known for one out of ten (10%) individuals in the T-PDE10A subgroup if they had sleeping  
503 problems, while this was known for 14 out of 20 (70%) in the T-PRKN subgroup. The main difference  
504 between these subgroups was the ratio of parent cohort versus literature cohort cases, which was  
505 1:9 for T-PDE10a and 15:5 for T-PRKN. In another study, we investigated the availability of data on  
506 specific phenotype information in literature case reports compared to data collected directly from  
507 parents in the terminal 6q deletion cohort presented here. We show that we collected significantly  
508 more data from parents, for almost all phenotypic features, in comparison to the literature<sup>60</sup>.

509 A risk of not reporting data on absent phenotype features is that incorrect conclusions can be  
510 drawn. For example, balance problems were often reported in the whole terminal 6q deletion cohort  
511 (25/35, 71%), but vestibular and/or cerebellar dysfunction was only reported as a cause of these  
512 balance problems in individuals with a deletion including *PRKN* (larger than 7.9 Mb) (5/16, 31%). It  
513 remains unknown whether vestibular and/or cerebellar dysfunctions only cause balance problems in  
514 patients with larger deletions, or if the causes of balance problems in those with smaller deletions  
515 were simply not investigated or reported.

516 Our phenotype data was collected directly from parents, which might raise questions on the  
517 quality of the data. However, in our data consistency study we show that phenotype data collected  
518 directly from parents is highly consistent with data extracted from the medical files on the same  
519 individual<sup>60</sup>.

520 Another topic for which information is still very limited is the natural history of disease and  
521 adulthood. For two individuals with a terminal 6q deletion smaller than 2.7 Mb, it is known that they  
522 did not have developmental delay and could live independently. For another two individuals with a  
523 deletion larger than 7.9 Mb (including *PRKN*), it is known that they could not (fully) take care of  
524 themselves and could not live independently. However, for most individuals who have reached

525 adulthood, information on their level of performance is very limited and it was unclear whether they  
526 could live independently. Follow-up on adults with terminal 6q deletions is needed to give insight  
527 into adult functioning and development of new clinical features at older ages.

528 Our recommendations for investigations now focus on two groups – deletions <7.1 Mb and  
529 deletions >7.1 Mb including the gene *QKI* – since this was a clear tipping point in the reported  
530 phenotypes. However, we cannot be absolutely sure that these clinical characteristics are only seen  
531 in the larger deletions and will never be reported in individuals with smaller deletions. Therefore we  
532 have tried to be cautious in our recommendations for investigations. Since the phenotype can be  
533 very variable, it is important to assess each patient on an individual level. Nonetheless, the general  
534 differences we have reported can be helpful in counselling (expecting) parents. For the future, we  
535 hope to be able to give more detailed recommendations based on deletion sizes, but this is only  
536 possible if detailed information for an even larger study population is collected.

537

## 538 **Conclusions**

539 Terminal 6q deletions cause a common phenotype that is broad and highly variable within individuals  
540 and within families. The main clinical characteristics are microcephaly, brain abnormalities  
541 (ventriculomegaly/hydrocephaly, corpus callosum abnormalities and cortical dysplasia), neurological  
542 problems (seizures, hypotonia and ataxia), vision problems, developmental delay, behavioural  
543 problems and subtle dysmorphic features. Cardiac, gastrointestinal, urogenital and skeletal  
544 anomalies may also occur. Most of the characteristics can be linked to the distally located gene *DLL1*  
545 and, probably as a consequence, deletion size has little effect on the phenotype. However,  
546 individuals with deletions >7.1 Mb that include *QKI* present with a more severe phenotype that  
547 includes severe developmental delay. Based on our findings, we provide recommendations for  
548 clinical follow-up and surveillance of individuals with terminal 6q deletions. To further improve these  
549 recommendations, more data needs to be collected, especially on clinical follow-up and adult  
550 functioning.

551

552

553 **List of abbreviations**

554 ASD = atrial septal defect

555 ADHD = attention deficit hyperactivity disorder

556 CHD = congenital heart defect

557 DGV = database of genomic variance

558 HI = haploinsufficiency

559 pLI = loss-of-function intolerance

560 PNH = periventricular nodular heterotopia

561

562 **Declarations**

563 Ethics approval and consent to participate

564 The accredited Medical Ethics Review Committee of the University Medical Center Groningen waived

565 full ethical evaluation because, according to Dutch guidelines, no ethical approval is necessary if

566 medical information that was already available is used anonymously and no extra tests have to be

567 performed.

568

569 Consent for publication

570 Consent for publication was obtained from all participants, and additional consent was obtained for

571 the use of photographs.

572

573 Availability of data and materials

574 Data collected from individuals in the parent cohort was submitted to the DECIPHER database

575 ([decipher.sanger.ac.uk](http://decipher.sanger.ac.uk)), IDs 489709–489746.

576

577 Competing interests

578 The authors declare no competing interests

579

580 Funding

581 This work was supported by a grant from ZonMw (113312101) and by crowd-funding organised by

582 Chromosome 6 parents. AE is recipient of a Junior Scientific Masterclass MD/PhD scholarship of the

583 University Medical Center Groningen.

584

585 Authors' contributions

586 Conceptualisation: AE, CMAR; Data curation: AE; Funding acquisition: AE, CMAR; Investigation: AE,

587 CMAR; Methodology: AE, CMAR; Project administration: AE; Resources: AE, CMAR; Software: AE;

588 Supervision: CMAR; Visualisation: AE; Writing – original draft: AE; Writing – review & editing: AE,

589 WSK, NC, TD, CMAR.

590

591 Acknowledgements

592 We would like to thank all the children and families for their participation. We also thank Kate

593 Mc Intyre for editing the manuscript, Nadia Simoes de Souza for helping with data collection and first

594 analysis, Dr. Valerio Conti for providing patient information and Morris Swertz and the members of

595 the MOLGENIS team at the Groningen Genomic Coordination Center for their support on the online

596 Chromosome 6 Questionnaire. Our special thanks go to Pauline Bouman, our contact for the

597 Chromosome 6 Facebook group.

598

599

600 **References**

601 1. Eash D, Waggoner D, Chung J, Stevenson D, Martin CL. Calibration of 6q subtelomere deletions

602 to define genotype/phenotype correlations. Clin Genet. 2005;67(5):396–403.



- 603 2. Hopkin RJ, Schorry E, Bofinger M, Milatovich A, Stern HJ, Jayne C, et al. New insights into the  
604 phenotypes of 6q deletions. *Am J Med Genet.* 1997;70(4):377–86.
- 605 3. Lee JY, Cho YH, Hallford G. Delineation of Subtelomeric Deletion of the Long Arm of  
606 Chromosome 6: 6q Subtelomeric Deletion. *Ann Hum Genet.* 2011 Nov;75(6):755–64.
- 607 4. Engwerda A, Frentz B, den Ouden AL, Flapper BCT, Swertz MA, Gerkes EH, et al. The phenotypic  
608 spectrum of proximal 6q deletions based on a large cohort derived from social media and  
609 literature reports. *Eur J Hum Genet EJHG.* 2018;(Journal Article).
- 610 5. Swertz MA, Dijkstra M, Adamusiak T, van der Velde JK, Kanterakis A, Roos ET, et al. The  
611 MOLGENIS toolkit: rapid prototyping of biosoftware at the push of a button. *BMC*  
612 *Bioinformatics.* 2010 Dec;11 Suppl 1:S12–S12.
- 613 6. Dupe V, Rochard L, Mercier S, Le Petillon Y, Gicquel I, Bendavid C, et al. NOTCH, a new signaling  
614 pathway implicated in holoprosencephaly. *Hum Mol Genet.* 2011 Mar;20(6):1122–31.
- 615 7. Conti V, Carabalona A, Pallesi-Pocachard E, Parrini E, Leventer RJ, Buhler E, et al. Periventricular  
616 heterotopia in 6q terminal deletion syndrome: Role of the C6orf70 gene. *Brain.*  
617 2013;136(11):3378–94.
- 618 8. Striano P, Malacarne M, Cavani S, Pierluigi M, Rinaldi R, Cavaliere ML, et al. Clinical phenotype  
619 and molecular characterization of 6q terminal deletion syndrome: Five new cases. *Am J Med*  
620 *Genet A.* 2006 Sep;140A(18):1944–9.
- 621 9. Peddibhotla S, Nagamani SCS, Erez A, Hunter JV, Holder JL, Carlin ME, et al. Delineation of  
622 candidate genes responsible for structural brain abnormalities in patients with terminal  
623 deletions of chromosome 6q27. *Eur J Hum Genet.* 2015;23(1):54–60.

- 624 10. Abu-Amero KK, Hellani A, Salih MA, Al Hussain A, al Obailan M, Zidan G, et al. Ophthalmologic  
625 abnormalities in a de novo terminal 6q deletion. *Ophthalmic Genet.* 2010 Mar;31(1):1–11.
- 626 11. Dobyms WB, Mirzaa G, Christian SL, Petras K, Roseberry J, Clark GD, et al. Consistent  
627 chromosome abnormalities identify novel polymicrogyria loci in 1p36.3, 2p16.1-p23.1, 4q21.21-  
628 q22.1, 6q26-q27, and 21q2. *Am J Med Genet A.* 2008;146(13):1637–54.
- 629 12. De Cinque M, Palumbo O, Mazzucco E, Simone A, Palumbo P, Ciavatta R, et al. Developmental  
630 coordination disorder in a patient with mental disability and a mild phenotype carrying terminal  
631 6q26-qter deletion. *Front Genet.* 2017;8(DEC):6–10.
- 632 13. Bertini V, De Vito G, Costa R, Simi P, Valetto A. Isolated 6q terminal deletions: an emerging new  
633 syndrome. *Am J Med Genet A.* 2006 Jan;140(1):74–81.
- 634 14. Quelin C, Saillour Y, Poirier K, Roubertie A, Boddaert N, Desguerre I, et al. Focal polymicrogyria  
635 are associated with submicroscopic chromosomal rearrangements detected by CGH microarray  
636 analysis. *Eur J Med Genet.* 2012;55(10):527–30.
- 637 15. Mosca AL, Callier P, Masurel-Paulet A, Thauvin-Robinet C, Marle N, Nouchy M, et al.  
638 Cytogenetic and array-CGH characterization of a 6q27 deletion in a patient with developmental  
639 delay and features of Ehlers-Danlos syndrome. *Am J Med Genet A.* 2010;152(5):1314–7.
- 640 16. Gerber JC, Neuhann TM, Tyshchenko N, Smitka M, Hackmann K. Expanding the clinical and  
641 neuroradiological phenotype of 6q27 microdeletion: Olfactory bulb aplasia and anosmia. *Am J*  
642 *Med Genet A.* 2011;155(8):1981–6.
- 643 17. Li P, Pomianowski P, DiMaio MS, Florio JR, Rossi MR, Xiang B, et al. Genomic characterization of  
644 prenatally detected chromosomal structural abnormalities using oligonucleotide array  
645 comparative genomic hybridization. *Am J Med Genet A.* 2011 Jul;155(7):1605–15.

- 646 18. Li Y, Choy KW, Xie HN, Chen M, He WY, Gong YF, et al. Congenital Hydrocephalus and  
647 Hemivertebrae Associated with de NOVO Partial Monosomy 6q (6q25.3→qter). *Balk J Med*  
648 *Genet.* 2015;
- 649 19. Valduga M, Philippe C, Bach Segura P, Thiebaugeorges O, Miton A, Beri M, et al. A retrospective  
650 study by oligonucleotide array-CGH analysis in 50 fetuses with multiple malformations. *Prenat*  
651 *Diagn.* 2010 Apr;30(4):333–41.
- 652 20. Wadt K, Jensen LN, Bjerglund L, Lundstrøm M, Kirchhoff M, Kjaergaard S. Fetal  
653 ventriculomegaly due to familial submicroscopic terminal 6q deletions. *Prenat Diagn.* 2012  
654 Dec;32(12):1212–7.
- 655 21. Kraus J, Lederer G, Keri C, Seidel H, Rost I, Wirtz A, et al. A familial unbalanced subtelomeric  
656 translocation resulting in monosomy 6q27→qter. *J Med Genet.* 2003 Apr;40(4):e48 LP-e48.
- 657 22. Rigon C, Salviati L, Mandarano R, Donà M, Clementi M. 6q27 subtelomeric deletions: Is there a  
658 specific phenotype? *Am J Med Genet A.* 2011;155(5):1213–4.
- 659 23. Liu S, Wang Z, Wei S, Liang J, Chen N, Ouyang H, et al. Gray Matter Heterotopia, Mental  
660 Retardation, Developmental Delay, Microcephaly, and Facial Dysmorphisms in a Boy with Ring  
661 Chromosome 6: A 10-Year Follow-Up and Literature Review. *Cytogenet Genome Res.* 2018;
- 662 24. Pinto D, Delaby E, Merico D, Barbosa M, Merikangas A, Klei L, et al. Convergence of genes and  
663 cellular pathways dysregulated in autism spectrum disorders. *Am J Hum Genet.*  
664 2014;94(5):677–94.
- 665 25. Schumann M, Hofmann A, Krutzke SK, Hilger AC, Marsch F, Stienen D, et al. Array-based  
666 molecular karyotyping in fetuses with isolated brain malformations identifies disease-causing  
667 CNVs. *J Neurodev Disord.* 2016;

- 668 26. Rooms L, Reyniers E, Wuyts W, Storm K, van Luijk R, Scheers S, et al. Multiplex ligation-  
669 dependent probe amplification to detect subtelomeric rearrangements in routine diagnostics.  
670 Clin Genet. 2006;
- 671 27. Thakur M, Bronshtein E, Hankerd M, Adekola H, Puder K, Gonik B, et al. Genomic detection of a  
672 familial 382 Kb 6q27 deletion in a fetus with isolated severe ventriculomegaly and her affected  
673 mother. Am J Med Genet A. 2018;
- 674 28. Hanna MD, Moretti PN, De Oliveira PC, Rosa AMT, Versiani RB, De Oliveira SF, et al. Defining  
675 the critical region for intellectual disability and brain malformations in 6q27 microdeletions.  
676 Mol Syndromol. 2019;
- 677 29. Fischer-Zirnsak B, Segebrecht L, Schubach M, Charles P, Alderman E, Brown K, et al.  
678 Haploinsufficiency of the Notch Ligand DLL1 Causes Variable Neurodevelopmental Disorders.  
679 Am J Hum Genet. 2019 Sep 5;105(3):631–9.
- 680 30. Scheuerle A, Wilson K. PARK2 copy number aberrations in two children presenting with autism  
681 spectrum disorder: further support of an association and possible evidence for a new  
682 microdeletion/microduplication syndrome. Am J Med Genet Part B Neuropsychiatr Genet Off  
683 Publ Int Soc Psychiatr Genet. 2011 Jun;156B(4):413–20.
- 684 31. Puvabanditsin S, Negroponte E, Jang P, Hedges A, Kased R, Mehta R. Multiple Congenital  
685 Anomalies in a Patient with Interstitial 6q26 Deletion. Mol Syndromol. 2020 Jan;10(5):276–80.
- 686 32. Ciocca L, Surace C, Digilio MC, Roberti MC, Sirleto P, Lombardo A, et al. Array-CGH  
687 characterization and genotype-phenotype analysis in a patient with a ring chromosome 6. BMC  
688 Med Genomics. 2013 Dec;6(1):3.

- 689 33. Auber B, Bruemmer V, Zoll B, Burfeind P, Boehm D, Liehr T, et al. Identification of subtelomeric  
690 genomic imbalances and breakpoint mapping with quantitative PCR in 296 individuals with  
691 congenital defects and/or mental retardation. *Mol Cytogenet.* 2009;2(1):10–10.
- 692 34. Group WMGRS, de Onis M. WHO Motor Development Study: Windows of achievement for six  
693 gross motor development milestones. *Acta Paediatr.* 2006;95(S450):86–95.
- 694 35. Bayley. Bayley scales of infant development<sup>®</sup>: manual. San Antonio: Psychological corporation;  
695 1969.
- 696 36. Huang N, Lee I, Marcotte EM, Hurles ME. Characterising and predicting haploinsufficiency in the  
697 human genome. *PLoS Genet.* 2010;6(10):e1001154–e1001154.
- 698 37. Lek M, Karczewski KJ, Minikel EV, Samocha KE, Banks E, Fennell T, et al. Analysis of protein-  
699 coding genetic variation in 60,706 humans. *Nature.* 2016 Aug;536(7616):285–91.
- 700 38. Rraku E, Kerstjens-Frederikse WS, Swertz MA, Dijkhuizen T, Ravenswaaij-Arts CMA van,  
701 Engwerda A. The phenotypic spectrum of terminal and subterminal 6p deletions based on a  
702 social media-derived cohort and literature review. *Manuscr Submitt Orphanet J Rare Dis.* 2022;
- 703 39. Koide R, Kobayashi S, Shimohata T, Ikeuchi T, Maruyama M, Saito M, et al. A Neurological  
704 Disease Caused By an Expanded CAG Trinucleotide Repeat in The TATA-Binding Protein Gene: A  
705 New Polyglutamine Disease? *Hum Mol Genet.* 1999 Oct 1;8(11):2047–53.
- 706 40. Martianov I, Viville S, Davidson I. RNA Polymerase II Transcription in Murine Cells Lacking the  
707 TATA Binding Protein. *Science.* 2002 Nov 1;298(5595):1036–9.
- 708 41. Ansar M, Ebstein F, Özkoç H, Paracha SA, Iwaszkiewicz J, Gesemann M, et al. Biallelic variants in  
709 PSMB1 encoding the proteasome subunit  $\beta 6$  cause impairment of proteasome function,

- 710 microcephaly, intellectual disability, developmental delay and short stature. *Hum Mol Genet.*  
711 2020 May 8;29(7):1132–43.
- 712 42. MacDonald JR, Ziman R, Yuen RKC, Feuk L, Scherer SW. The Database of Genomic Variants: a  
713 curated collection of structural variation in the human genome. *Nucleic Acids Res.* 2014 Jan  
714 1;42(Database issue):D986–92.
- 715 43. Lesieur-Sebellin M, Till M, Khau Van Kien P, Herve B, Bourgon N, Dupont C, et al. Terminal 6q  
716 deletions cause brain malformations, a phenotype mimicking heterozygous DLL1 pathogenic  
717 variants: A multicenter retrospective case series. *Prenat Diagn [Internet].* [cited 2022 Jan  
718 8];n/a(n/a). Available from: <https://onlinelibrary.wiley.com/doi/abs/10.1002/pd.6074>
- 719 44. Siebel C, Lendahl U. Notch Signaling in Development, Tissue Homeostasis, and Disease. *Physiol*  
720 *Rev.* 2017 Oct 1;97(4):1235–94.
- 721 45. Shimojo H, Isomura A, Ohtsuka T, Kori H, Miyachi H, Kageyama R. Oscillatory control of Delta-  
722 like1 in cell interactions regulates dynamic gene expression and tissue morphogenesis. *Genes*  
723 *Dev.* 2016 Jan 1;30(1):102–16.
- 724 46. Kerstjens-Frederikse WS, van de Laar IMBH, Vos YJ, Verhagen JMA, Berger RMF, Lichtenbelt KD,  
725 et al. Cardiovascular malformations caused by NOTCH1 mutations do not keep left: data on 428  
726 probands with left-sided CHD and their families. *Genet Med.* 2016 Sep 1;18(9):914–23.
- 727 47. Luxán G, D’Amato G, MacGrogan D, de la Pompa JL. Endocardial Notch Signaling in Cardiac  
728 Development and Disease. *Circ Res [Internet].* 2016 Jan 8 [cited 2021 Jul 5];118(1). Available  
729 from: <https://www.ahajournals.org/doi/10.1161/CIRCRESAHA.115.305350>
- 730 48. Bu H, Liu L, Hu S, Tan Z, Zhao T. Targeted next-generation sequencing for research and  
731 diagnostics in congenital heart disease, and cleft lip and/or palate. *Mol Med Rep.* 2019 May  
732 1;19(5):3831–40.

- 733 49. Thangaraj MP, Furber KL, Gan JK, Ji S, Sobchishin L, Doucette JR, et al. RNA-binding Protein  
734 Quaking Stabilizes Sirt2 mRNA during Oligodendroglial Differentiation. *J Biol Chem*. 2017 Mar  
735 31;292(13):5166–82.
- 736 50. Backx L, Fryns JP, Marcelis C, Devriendt K, Vermeesch J, Van Esch H. Haploinsufficiency of the  
737 gene Quaking (QKI) is associated with the 6q terminal deletion syndrome. *Am J Med Genet A*.  
738 2010;
- 739 51. Ghebranious N, Blank RD, Raggio CL, Staubli J, McPherson E, Ivacic L, et al. A Missense  
740 T(Brachyury) Mutation Contributes to Vertebral Malformations. *J Bone Miner Res*.  
741 2008;23(10):1576–83.
- 742 52. AlFawaz S, Fong F, Plagnol V, Wong FSL, Fearn J, Kelsell DP. Recessive oligodontia linked to a  
743 homozygous loss-of-function mutation in the SMOC2 gene. *Arch Oral Biol*. 2013 May  
744 1;58(5):462–6.
- 745 53. Bloch-Zupan A, Jamet X, Etard C, Laugel V, Muller J, Geoffroy V, et al. Homozygosity Mapping  
746 and Candidate Prioritization Identify Mutations, Missed by Whole-Exome Sequencing, in  
747 SMOC2, Causing Major Dental Developmental Defects. *Am J Hum Genet*. 2011 Dec 9;89(6):773–  
748 81.
- 749 54. McKusick-Nathans Institute of Genetic Medicine JHU (Baltimore MD). Online Mendelian  
750 Inheritance in Man, OMIM® [Internet]. Vol. 2016. Available from: <https://omim.org/>
- 751 55. Jin SC, Homsy J, Zaidi S, Lu Q, Morton S, DePalma SR, et al. Contribution of rare inherited and de  
752 novo variants in 2,871 congenital heart disease probands. *Nat Genet*. 2017 Nov;49(11):1593–  
753 601.

- 754 56. Alankarage D, Ip E, Szot JO, Munro J, Blue GM, Harrison K, et al. Identification of clinically  
755 actionable variants from genome sequencing of families with congenital heart disease. *Genet*  
756 *Med*. 2019 May;21(5):1111–20.
- 757 57. Chen X, Liu Y, Xu C, Ba L, Liu Z, Li X, et al. QKI is a critical pre-mRNA alternative splicing regulator  
758 of cardiac myofibrillogenesis and contractile function. *Nat Commun*. 2021 Jan 4;12:89.
- 759 58. Lukusa T, Fryns JP. Human chromosome fragility. *Biochim Biophys Acta BBA - Gene Regul Mech*.  
760 2008 Jan 1;1779(1):3–16.
- 761 59. Palumbo E, Matricardi L, Tosoni E, Bensimon A, Russo A. Replication dynamics at common  
762 fragile site FRA6E. *Chromosoma*. 2010 Dec;119(6):575–87.
- 763 60. Engwerda A, Frentz B, Rraku E, Simoes de Souza NF, Swertz MA, Plantinga M, et al. Parent-  
764 reported phenotype data on chromosome 6 aberrations collected via an online questionnaire:  
765 data consistency and data availability. *Manuscr Submitt Orphanet J Rare Dis*. 2022;

766

767

768 **Figure 1.** Overview of all terminal 6q deletions and interstitial 6q26q27 deletions. Deletions from our  
769 parent cohort (black bars) and literature cohort (grey bars) are shown, and their minimum (thick bar)  
770 and maximum (thin bar) deletion size are visualised when available. The terminal deletions are  
771 divided into eight subgroups (shown on the right hand side) based on the most proximal gene with a  
772 predicted haploinsufficiency effect (HI-gene) (vertical light blue lines) involved in the minimum  
773 deletion size. T-PSMB1: terminal deletions only including *PSMB1* and *TBP* (breakpoint distal to 170.6  
774 Mb), T-DLL1: terminal deletions including *DLL1* (breakpoint between 168.4 and 170.6 Mb), T-AFDN:  
775 terminal deletions including *AFDN* (166.1–168.4 Mb), T-PDE10A: terminal deletions including *PDE10A*  
776 (164.0–166.1 Mb), T-QKI: terminal deletions including *QKI* (163.1–164.0 Mb), T-PRKN: terminal  
777 deletions including *PRKN* (161.5–163.1 Mb), T-MAP3K4: terminal deletions including *MAP3K4* (160.5–



778 161.5 Mb) and T-R (residual group): terminal deletions including *IGF2R* and larger (breakpoint  
779 proximal to 160.5 Mb). Interstitial deletions are divided in two subgroups based on their cytogenetic  
780 location: I-6q26: interstitial deletions (mostly) located on chromosome band 6q26 (161–164.5 Mb), I-  
781 6q27: deletions located on chromosome band 6q27 (164.5–171.1 Mb). The deletions are visualised  
782 using the UCSC genome browser (<https://genome.ucsc.edu>). The vertical red line marks the location  
783 of the common fragile site FRA6E. The literature cases were derived from 29 reports<sup>1,6–33</sup>.

784

785 **Figure 2.** Age of achievement for milestones ‘walking independently’ and ‘using two-word  
786 sentences’ in participants who were at least 12 months of age. Deletions smaller than 7.1 Mb include  
787 subgroups T-PSMB1, T-DLL1, T-AFDN and T-PDE10A. Deletions larger than 7.1 Mb include subgroups  
788 T-QKI, T-PRKN, T-MAP3K4 and T-R. Light grey bars indicate the number of children (x axis) that have  
789 reached the milestones ‘walking independently’ (upper panel) and ‘using two-word sentences’ (lower  
790 panel) before the given age (y axis, years). The dark grey bars are the children who were not able to  
791 perform the milestone at that age. The hatched bars are the children who were not able to perform  
792 the milestone, but who have not yet reached the age on the y axis. For example, at age 12 years, 29–  
793 47 (60–98%) participants are able to walk (figure and description adapted from Engwerda, et al.  
794 2018<sup>4</sup>).

795

#### 796 **Supplementary files**

797 Figure S1. Developmental delay in children older than 2 years of age

798 Figure S2. Delayed Myelination

799 Figure S3. Dental problems

800

801 Table S1. HI and pLI scores

802 Table S2. Phenotypes detailed

803

**Table 1.** Genotype characteristics of terminal 6q and interstitial 6q26q27 deletions

Subgroup	Cohort parent/literature	No. of fetuses	Age median* (range) years; months	Deletion size median (range) Mb	No. of OMIM genes median (range)	No. of HI genes median (range)
Total terminal (n=93)	35/58	8	7;5 (0;0–57;0)	6.45 (0.39–16.00)	25 (3–62)	4 (1–14)
Parent cohort	35/0	1	4;6 (0;6–32;9)	8.39 (0.76–16.00)	29 (5–62)	6 (2–14)
Literature cohort	0/58	7	12;0 (0;0–57;0)	4.14 (0.39–15.99)	22 (3–62)	3 (1–14)
T-PSMB1 (n=1)	0/1	0	8;0	0.39	3	1
T-DLL1 (n=23)	3/20	2	17;0 (0;0–49;0)	1.95 (0.53–2.66)	10 (5–12)	2
T-AFDN (n=16)	6/10	2	6;6 (0;6–57;0)	4.01 (3.07–4.97)	22 (14–24)	3
T-PDE10A (n=10)	1/9	0	3;10 (0;1–25;0)	5.89 (5.16–7.00)	25	4
T-QKI (n=7)	3/4	0	7;11 (0;8–25;0)	7.68 (7.37–7.84)	28 (27–28)	5
T-PRKN (n=20)	15/5	0	5;0 (0;4–32;9)	8.57 (8.09–9.53)	29 (29–30)	6
T-MAP3K4 (n=6)	4/2	2	6;3 (4;10–14;9)	10.14 (9.94–10.31)	33 (31–35)	7
T-R (n=10)	3/7	2	8;0 (0;6–37;0)	12.12 (10.79–16.00)	51.5 (40–62)	11.5 (8–14)
Total Interstitial (n=11)	3/8	0	6;0 (0;1–43;0)	0.33 (0.04–3.08)	2 (1–7)	1 (1–3)
Parent cohort	3/0	0	6;0 (2;2–15;4)	0.33 (0.21–3.08)	1 (1–5)	1 (1–3)
Literature cohort	0/8	0	10;2 (0;1–43;0)	0.61 (0.04–1.18)	4.5 (1–7)	1
I-6q26 (n=6)	3/3	0	10;2 (0;1–19;0)	0.23 (0.04–3.08)	1.5 (1–5)	1 (1–3)
I-6q27 (n=5)	0/5	0	6;0 (1;6–43;0)	0.97 (0.12–1.18)	7 (2–7)	1

\*If known, fetuses were excluded from the age calculations

Genotype characteristics for all subgroups as represented in Figure 1. The number (median and range) of all OMIM genes (<https://www.omim.org>) and the genes with predicted haploinsufficiency effect (HI-genes) (<https://www.deciphergenomics.org>)<sup>3637</sup> within the deletions are given.

**Table 2.** Overview of most prominent characteristics seen in individuals with terminal 6q deletions and interstitial 6q26q27 deletions

Group*	T- PSMB1 (n=1)	T-DLL1 (n=23)	T-AFDN (n=16)	T- PDE10A (n=10)	T-QKI (n=7)	T-PRKN (n=20)	T- MAP3K4 (n=6)	T-R (n=10)	Total terminal (n=93)	I-6q27 (n=5)	I-6q26 (n=6)
Sex (female/male)	male	14/9	9/7	9/1	4/3	10/10	6/0	9/1	61/32	2/3	2/4
Prolonged neonatal jaundice	n.a.	0/3	0/5	1/3	1/4	6/15	1/4	0/4	9/38	0/0	0/5
Low birth weight (<p10)	+	0/5	3/9	0/5	1/6	5/15	1/4	2/3	13/48	0/1	1/4
Short stature (<p10)	+	1/7	1/9	2/7	0/5	6/15	1/3	3/3	15/50	0/1	0/2
Head circumference <p10/normal/>p90	<p10	5/4/2	2/5/1	4/2/2	5/1/1	13/3/0	1/1/0	3/0/1	34/16/7	1/0/0	0/2/0
Plagiocephaly	n.a.	2/4	2/6	0/1	2/3	7/13	2/4	1/3	16/34	0/0	1/4
Hypertelorism	n.a.	3/8	4/8	3/4	4/6	8/18	2/3	4/8	28/55	1/2	1/3
Vision problems	n.a.	2/4	5/6	1/5	4/5	10/16	3/4	5/5	30/45	0/0	2/4
Mild vision problems	n.a.	1/2	3/5	0/1	3/4	6/10	2/3	1/5	16/30	0/0	1/2
Hypermetropia	n.a.	0/4	2/6	0/4	4/5	5/17	3/4	0/4	14/44	0/0	2/4
Nystagmus	-	0/5	2/8	0/5	2/6	3/18	2/4	2/6	11/53	0/1	1/4
Strabismus	+	1/5	4/8	1/5	3/6	8/18	2/4	4/6	24/53	1/1	0/4
Abnormal eye morphology	n.a.	0/3	1/5	0/4	0/4	7/16	0/4	4/6	12/42	0/0	0/3
Dysplastic outer ear	+	5/7	3/8	5/6	3/5	7/15	0/4	3/7	27/53	1/2	0/3
Cleft lip and/or palate	n.a.	0/9	0/6	0/5	0/5	1/13	0/4	2/7	3/49	0/1	0/2
Dental problems	n.a.	2/3	1/4	1/1	2/5	7/15	0/3	0/3	13/34	0/1	0/3
Feeding difficulties	n.a.	3/3	3/6	2/2	2/5	13/16	3/4	2/3	28/39	0/0	2/3
Constipation	n.a.	0/3	2/7	1/1	1/3	5/16	2/4	1/3	12/37	0/0	1/3
Anal abnormality	n.a.	0/3	0/6	0/1	1/3	4/14	0/4	0/3	5/34	0/0	0/3
Respiratory problems	n.a.	1/3	2/7	1/2	0/3	4/15	0/4	2/4	10/38	0/0	1/4
Recurrent infections	n.a.	2/4	1/5	0/1	2/3	5/11	2/4	1/3	13/31	0/0	1/3
Congenital heart defect	n.a.	0/3	1/6	3/5	0/6	6/17	0/4	2/4	12/45	0/0	1/5
Kidney abnormality	n.a.	0/3	2/7	0/3	1/3	2/16	1/4	1/4	7/40	1/1	1/4
Abnormal genitals in females	n.a.	0/1	1/6	0/1	1/3	3/10	0/4	1/3	6/28	0/0	0/2
Sacral dimple	n.a.	0/4	3/5	1/2	3/3	11/14	2/4	3/3	23/35	0/0	1/3
Spina bifida	n.a.	0/3	0/6	0/2	0/3	3/12	0/4	2/5	5/35	0/0	1/4
Spinal cord abnormality	n.a.	1/4	0/4	2/5	3/3	6/14	1/4	2/4	15/38	0/0	0/3

Abnormal vertebral morphology	+	1/5	1/7	0/2	1/3	1/11	2/5	1/4	8/38	0/0	0/3
Scoliosis	n.a.	1/6	0/6	0/2	2/4	3/14	0/4	0/3	6/39	0/0	1/5
Hip dysplasia	n.a.	0/1	0/1	1/2	0/1	5/10	0/1	0/1	6/17	0/0	0/1
Hypermobility of the joints	n.a.	3/4	9/11	2/3	3/5	8/17	4/4	3/6	32/50	1/1	0/3
Pes planus	n.a.	0/4	1/7	0/3	2/5	2/15	0/4	0/5	5/43	0/0	0/5
Positional foot deformity	n.a.	0/4	1/7	2/3	1/5	1/15	0/4	3/5	8/43	0/0	1/5
Capillary hemangioma	n.a.	0/5	1/5	0/3	0/4	1/13	1/4	0/3	3/37	0/1	0/4
Hypopigmentation of the skin	n.a.	0/5	0/5	1/3	0/4	1/13	1/4	0/3	3/37	0/1	0/4
Brain abnormalities on MRI or CT	+	14/17	11/12	9/10	6/7	17/18	5/5	9/9	72/79	4/5	2/2
Ventriculomegaly and/or hydrocephaly	+	10/14	10/11	7/9	4/6	9/17	4/5	6/9	51/72	4/5	1/2
Abnormality of the cerebellum	-	0/14	4/11	1/9	2/6	5/17	3/5	3/9	18/72	2/5	0/2
Corpus callosum abnormality	+	4/14	1/11	5/9	3/6	8/17	2/5	7/9	31/72	3/5	0/2
Cortical dysplasia	-	4/14	1/11	2/9	2/6	4/17	1/5	1/9	15/72	4/5	0/2
Seizures and/or epilepsy	+	5/12	3/10	4/6	6/7	15/19	3/4	7/7	44/66	3/5	1/3
Focal-onset	+	1/5	2/3	0/4	4/6	5/15	2/3	5/7	20/44	3/3	0/1
Generalized-onset	-	3/5	1/3	0/4	5/6	4/15	2/3	1/7	16/44	0/3	0/1
Hypotonia	+	7/10	7/9	6/7	6/6	15/16	3/4	5/7	50/60	1/1	2/5
Hypertonia	n.a.	0/3	1/5	0/1	0/1	2/11	2/4	2/4	7/29	0/0	0/3
Ataxia	n.a.	2/4	1/5	1/1	1/3	2/10	2/3	2/3	11/29	1/1	0/3
Torticollis	n.a.	2/3	0/5	0/1	1/3	3/12	1/4	1/3	8/31	0/0	0/3
Balance problems	n.a.	3/4	2/6	2/2	2/3	11/13	3/4	2/3	25/35	0/0	1/3
Developmental delay (Table 3)	+	14/16	9/11	5/6	6/6	15/15	4/4	6/6	60/65	4/4	2/5
Sleeping problems	n.a.	1/3	4/7	0/1	3/4	7/14	2/4	1/3	18/36	0/0	2/4
Insomnia	n.a.	1/1	4/4	0/0	1/3	4/7	2/2	0/1	12/18	0/0	2/2
Social behaviour	n.a.	2/6	4/6	1/3	3/5	10/15	2/4	3/3	25/42	0/0	3/3
Helpful behaviour	n.a.	1/6	2/6	1/3	2/5	5/15	1/4	0/3	12/42	0/0	1/3
Easily upset	n.a.	3/6	3/6	1/3	2/5	4/15	2/4	2/3	17/42	0/0	1/3

Hyperactivity	n.a.	3/6	1/6	1/3	1/5	6/15	1/4	2/3	15/42	0/0	2/3
---------------	------	-----	-----	-----	-----	------	-----	-----	-------	-----	-----

\*For explanation see Figure 1.

CT = computed tomography, MRI = magnetic resonance imaging, n.a. = not available

Clinical characteristics were selected based on prevalence and clinical significance. More details are presented in Supplementary Table S2

**Table 3.** Development for different subgroups of terminal 6q deletions

	T-PSMB1	T-DLL1	T-AFDN	T-PDE10A	T-QKI	T-PRKN	T-MAP3K4	T-R	Total (terminal)	I-6q27	I-6q26
Normal	0	2	2	1	0	0	0	0	5	0	<b>3</b>
Borderline	0	1	1	0	1	2	0	0	5	0	1
Mild delay	0	2	<b>3</b>	<b>2</b>	1	<b>6</b>	<b>1</b>	<b>2</b>	<b>17</b>	<b>4</b>	1
Moderate delay	0	<b>6</b>	1	1	<b>3</b>	2	<b>1</b>	<b>2</b>	16	0	0
Severe delay	0	0	0	0	1	1	0	0	2	0	0
Delayed but not specified	1	5	4	2	0	4	2	2	20	0	0
Unknown due to young age	0	6	5	4	1	5	2	4	27	1	1

Not specified = developmental delay is reported, but lacking sufficient information to classify reliably. See also Figure S1

Development categorised as normal (IQ >85), borderline (IQ 70-85), mild (IQ 50-70), moderate (IQ 30-50) or severe (IQ <30) delay. The category with most individuals is highlighted in bold

**Table 4.** Age of achievement for milestones

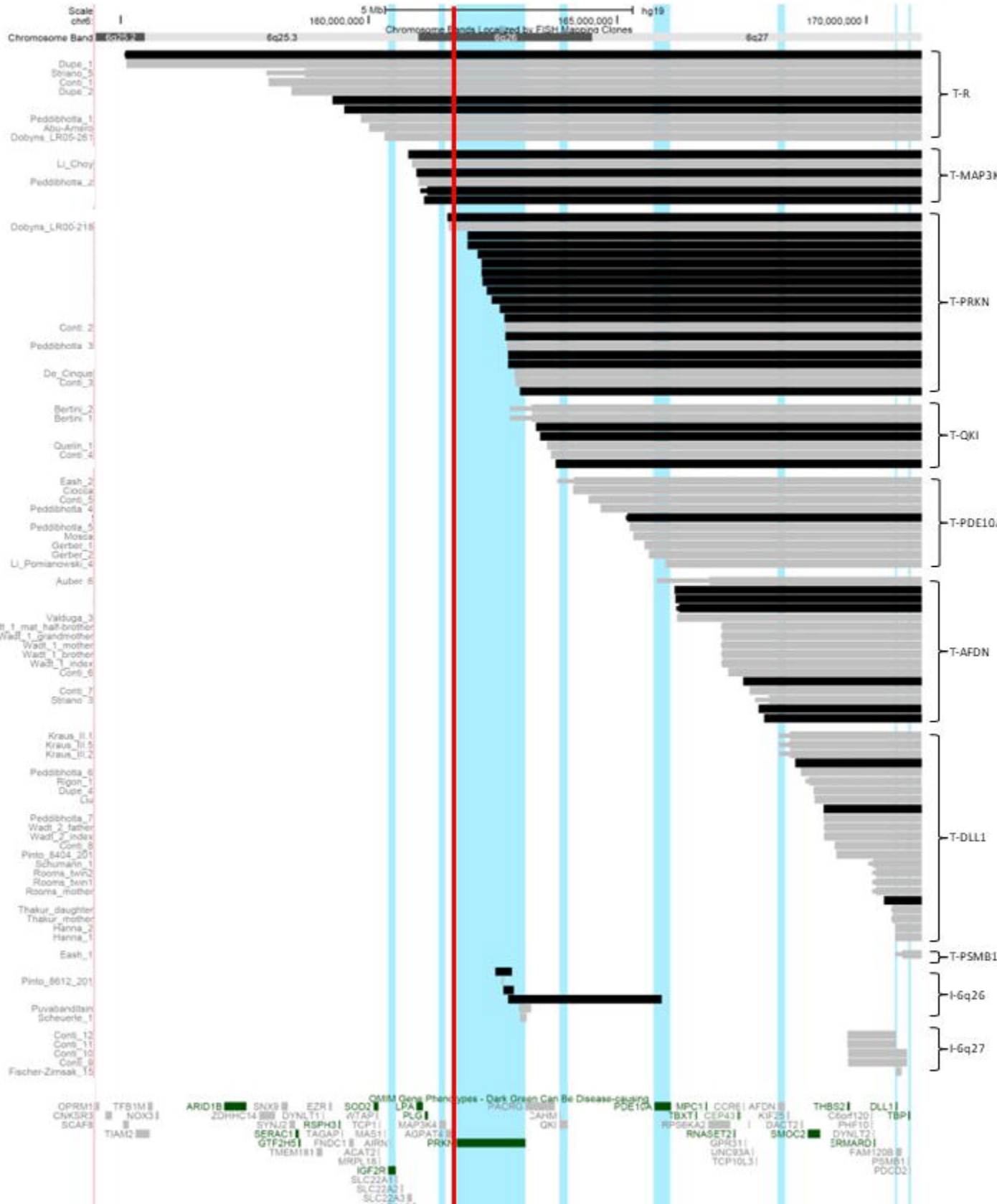
Milestones	Total terminal deletions		Deletions <7.1 Mb		Deletions >7.1 Mb	
	Milestone achieved	Not able to perform milestone	Milestone achieved	Not able to perform milestone	Milestone achieved	Not able to perform milestone
Roll over (weeks)	n=30 9 (2–28)	n=2 27.5 (25–30)	n=9 8 (4–10)*	n=1 25	n=21 10 (2–28)*	n=1 30
Sit up unaided (months)	n=29 13 (7–40)	n=5 10 (6–28)	n=11 11 (7–18)*	n=2 8 (6–10)	n=18 15 (9–40)*	n=3 15 (7–28)
Pull up in a standing position (months)	n=24 16.5 (9–72)	n=10 15 (6–57)	n=6 12.5 (9–18)*	n=4 11 (6–16)	n=18 18 (11–72)*	n=6 17 (7–57)
Walking unsupported (months)	n=28 22.5 (14–57)	n=17 19 (6–393)	n=12 18 (14–30)	n=5 12 (6–16)	n=16 23.5 (15–57)	n=12 30.5 (7–393)
Speak first words (months)	n=25 14 (9–60)	n=11 15 (6–86)	n=6 15.5 (10–30)	n=6 14 (6–44)	n=19 13 (9–60)	n=5 15 (7–86)
Speak two-word sentences (months)	n=19 30 (18–72)	n=16 19.5 (6–86)	n=6 24 (20–45)	n=6 14 (6–44)	n=13 36 (18–72)	n=10 24 (7–86)
Fully toilet trained during the day (years)	n=10 4.5 (3–10)	n=27 3.5 (0.5–32)	n=3 4 (3–4)	n=7 3.5 (0.5–8)	n=7 5 (4–10)	n=20 4 (0.5–32)

For each milestone the number of individuals who achieved the milestone and the median and range of their ages of achievement are given. The number of individuals who were not able to perform the milestone is also given and the median and range of the age at which they could not yet perform the milestone. Deletions smaller than 7.1 Mb include subgroups T-PSMB1, T-DLL1, T-AFDN and T-PDE10A, deletions larger than 7.1 Mb include subgroups T-QKI, T-PRKN, T-MAP3K4 and T-R.

\* Significant ( $p < 0.05$ ) difference between the age of achievement for smaller (<7.1 Mb) and larger (>7.1 Mb) terminal deletions.

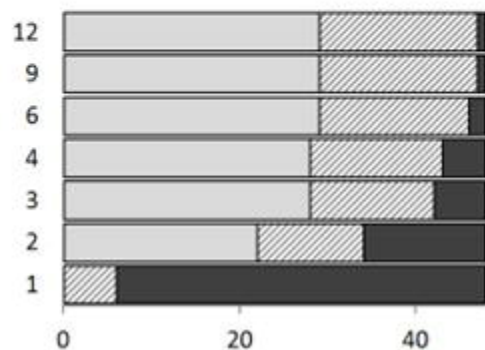






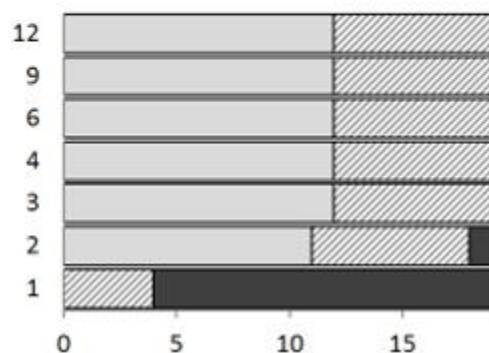
Total terminal deletions

age (years)

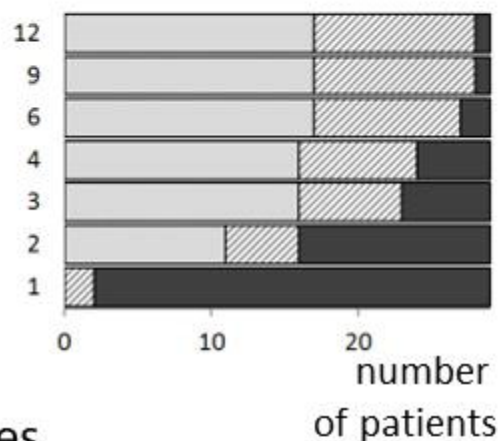


Deletions <7.1 Mb

Walking independently

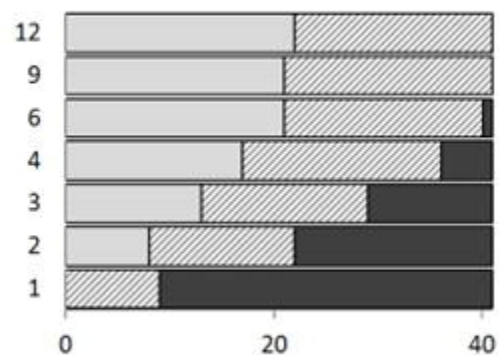


Deletions >7.1 Mb

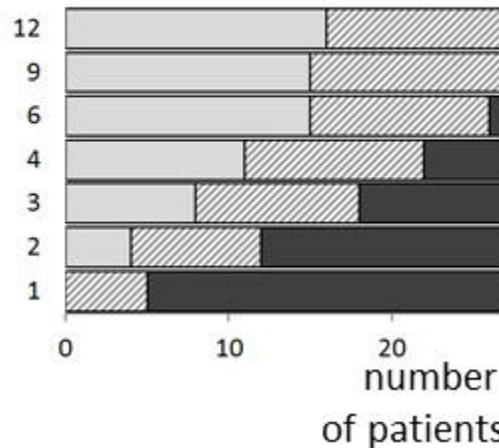
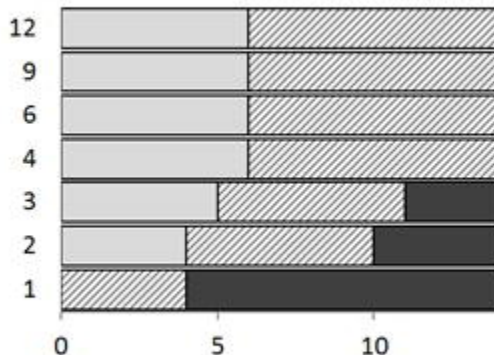


number of patients

age (years)



Using two-word sentences



number of patients