

1 **Supplemental Data**

2  
3 **Supplemental Table 1. EN-RAGE gene set**

4

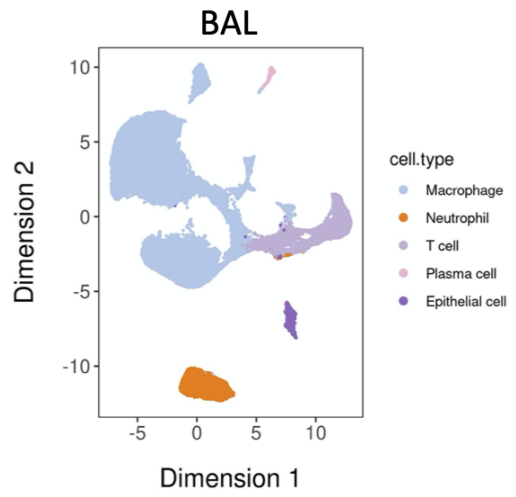
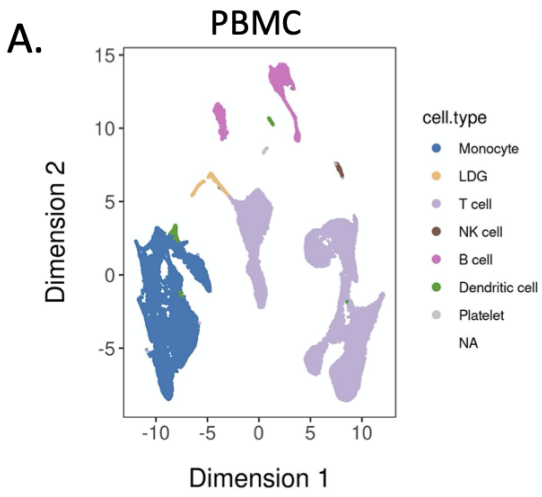
ID	Gene symbol	ID	Gene symbol	ID	Gene symbol	ID	Gene symbol
ENSG00000276900	AC023157.3	ENSG00000163412	EIF4E3	ENSG00000248323	LOC101928000	ENSG00000101236	RNF24
ENSG00000268734	AC245128.3	ENSG00000198734	F5	ENSG00000185022	MAFF	ENSG00000163221	S100A12
ENSG00000233461	AL445524.1	ENSG00000186431	FCAR	ENSG00000125505	MBOAT7	ENSG00000143546	S100A8
ENSG00000161944	ASGR2	ENSG00000085265	FCN1	ENSG00000140563	MCTP2	ENSG00000163220	S100A9
ENSG00000158825	BATF	ENSG00000125740	FOSB	ENSG00000257335	MGAM	ENSG00000213694	S1PR3
ENSG00000113916	BCL6	ENSG00000171051	FPR1	ENSG00000172965	MIR4435-2HG	ENSG00000155307	SAMSN1
ENSG00000163823	CCR1	ENSG00000171049	FPR2	ENSG00000008516	MMP25	ENSG00000197632	SERPINE2
ENSG00000125810	CD93	ENSG00000123689	G0S2	ENSG00000059728	MXD1	ENSG00000197208	SLC22A4
ENSG00000158825	CDA	ENSG00000151948	GLT1D1	ENSG00000105835	NAMPT	ENSG00000147454	SLC25A37
ENSG00000131873	CHSY1	ENSG00000170837	GPR27	ENSG00000165030	NFIL3	ENSG00000059804	SLC2A3
ENSG00000136026	CKAP4	ENSG00000139572	GPR84	ENSG00000100906	NFKBIA	ENSG00000082014	SMARCD3
ENSG00000166527	CLEC4D	ENSG00000136630	HLX	ENSG00000087157	PGS1	ENSG00000122862	SRGN
ENSG00000166523	CLEC4E	ENSG00000173083	HPSE	ENSG00000105520	PLPPR2	ENSG00000180953	ST20
ENSG00000120885	CLU	ENSG00000160888	IER2	ENSG00000163421	PROK2	ENSG00000010327	STAB1
ENSG00000146592	CREB5	ENSG00000137331	IER3	ENSG00000140368	PSTPIP1	ENSG00000127954	STEAP4
ENSG00000103196	CRISPLD2	ENSG00000115594	IL1R1	ENSG00000125384	PTGER2	ENSG00000166900	STX3
ENSG00000163739	CXCL1	ENSG00000136689	IL1RN	ENSG00000073756	PTGS2	ENSG00000137462	TLR2
ENSG00000169429	CXCL8	ENSG00000157551	KCNJ15	ENSG00000155093	PTPRN2	ENSG00000173334	TRIB1
ENSG00000138061	CYP1B1	ENSG00000239998	LILRA2	ENSG00000089159	PXN	ENSG00000127824	TUBA4A
ENSG00000139318	DUSP6	ENSG00000187116	LILRA5	ENSG00000105514	RAB3D	ENSG00000038427	VCAN
ENSG00000135636	DYSF	ENSG00000182541	LIMK2	ENSG00000169385	RNASE2	ENSG00000229124	VIM-AS1

5  
6  
7 **Supplementary Table 2. Reproducibility of EN-RAGE+ myeloid cell gene expression across**  
8 **cohorts and sample types. Spearman correlation coefficients are shown for pseudo-bulk EN-**  
9 **RAGE signature score and genes encoding myeloid functions within specific myeloid populations**  
10 **across scRNA-seq datasets. Positive correlations are shaded red and negative correlations shaded**  
11 **blue, with increasing darkness of shading indicating two tailed p values of p<0.05, p<0.01, and**  
12 **p<0.001. TA=tracheal aspirate, BAL=bronchoalveolar lavage. Blanks indicate transcript in below**  
13 **detection. Datasets: Liao et al.<sup>7</sup>, Grant et al.<sup>6</sup>, Delorey et al.<sup>5</sup>, Schulte-Schrepping et al.<sup>11</sup>, Silvin et**  
14 **al.<sup>12</sup>, COMET PBMC<sup>2</sup>, whole blood<sup>37</sup>, and ETA<sup>36</sup>.**

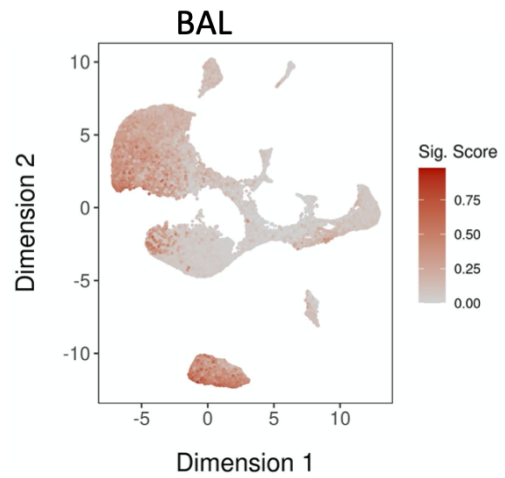
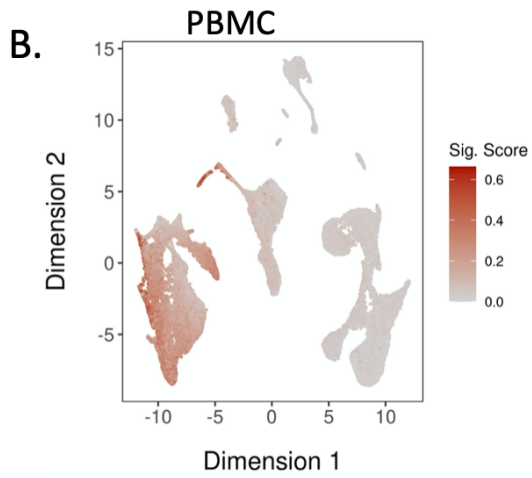
15  
16

Spearman rho		HLA-DRA	HLA-DRB1	CD14	STAT3	S100A12	S100A9	IL10	PDL1	PTGER2	TGFB1	IL1B	IDO1	CCR5	CYBB	ARG1	CCR2	
Airway samples	<b>Monocyte</b>	n																
	TA MonoMac COMET	41	0.11	-0.23	0.10	0.75	0.70	0.76	0.74	0.59	0.72	0.13	0.86	0.33	0.36	0.14	0.31	0.26
	BAL monocyte Liao	12	-0.90	-0.97	0.73	0.71	0.92	0.38	0.82	0.58	0.89	0.89	0.74	0.69	0.80	0.07		0.73
	BAL myeloid Grant	19	0.52	0.43	0.41	0.48	0.53	0.16	0.36	0.47	0.66	0.29	0.47	0.34	0.37	0.06		-0.05
	BAL macrophage Grant	19	-0.26	-0.33	0.32	0.83	0.93	0.89	0.65	0.76	0.81	0.38	0.55	0.61	0.46	-0.19	0.30	0.15
	Lung myeloid Delorey	24	-0.01	0.00	-0.02	0.65	0.76	0.32	0.77	0.85	0.74	0.29	0.87	0.65	0.43	-0.15	0.53	0.28
	<b>Neutrophil</b>																	
	TA neutrophil COMET	40	0.05	-0.16	0.58	0.63	0.74	0.85	0.53	0.61	0.35	0.54	0.78	0.30	-0.02	0.21	0.59	-0.09
	BAL neutrophil Liao	11	0.34	0.35	0.82	0.84	0.89	0.96		0.99	0.87	0.96	0.83	0.93	0.80	0.85		0.15
	<b>Blood samples</b>																	
<b>Monocyte</b>	n																	
Blood monocyte COMET	18	-0.01	0.19	0.62	0.79	0.67	0.74	0.57	0.31	0.52	0.37	0.34	0.37	0.07	0.60	0.43	0.53	
Blood monocyte Schulte	33	-0.54	-0.41	0.81	0.75	0.67	0.67	0.05	0.27	0.51	0.36	-0.16	0.09	0.05	0.56	-0.01	0.23	
Blood monocyte Silvin	6	-0.77	-0.89	0.94	0.54	1.00	0.77		0.68	-0.03	0.31	-0.43		0.43	0.94		0.60	
PBMC monocyte COMET	44	-0.45	-0.48	0.65	0.15	0.73	0.79	0.15	0.02	0.38	0.18	0.34	-0.08	-0.44	0.52	-0.09	0.25	
PBMC monocyte Schulte	16	-0.73	-0.54	0.75	0.86	0.57	0.71	0.66	0.43	0.77	-0.20	0.64	0.02	-0.40	0.40	0.65	-0.56	
<b>Neutrophil</b>																		
Blood neutrophil COMET	18	-0.53	-0.52	0.78	0.94	0.72	0.87	0.30	0.78	-0.48	0.91	0.70	0.37	0.06	0.28	0.77	-0.21	
Blood neutrophil Schulte	33	-0.23	-0.05	0.71	0.79	0.57	0.62		0.50	0.22	0.80	-0.08		0.33	0.19	0.19	-0.01	
Blood neutrophil Silvin	6	-0.37	-0.77	1.00	0.20	1.00	0.94		0.60	0.82	0.60	-0.03			-0.09	0.54	-0.85	
PBMC neutrophil Schulte	16	0.21	0.46	0.54	0.74	0.63	0.68		0.62	-0.11	0.91	0.80	0.55		0.23	0.47		

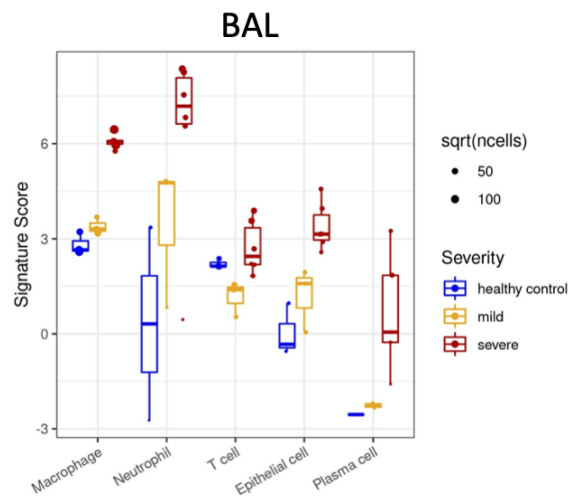
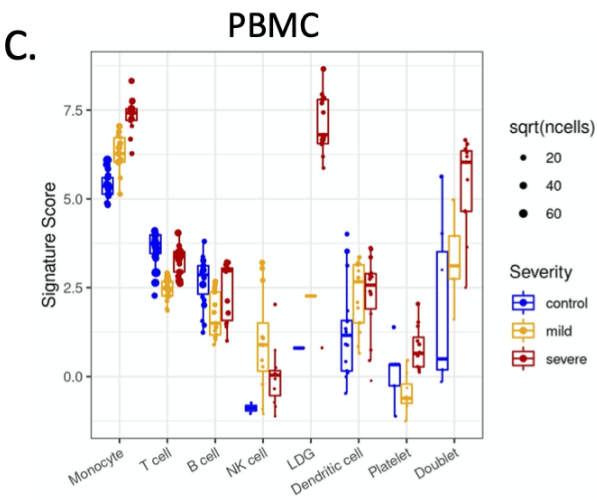
17 **Supplementary Figure 1.** Further characterization of the signature within PBMC and BAL.  
18 UMAP plots from PBMC and BAL.  
19 A. UMAP projection of cells colored by cell types. Each point represents a single cell, and points  
20 are colored by annotated cell types. PBMC<sup>11</sup> or BAL<sup>7</sup>.  
21 B. UMAP projection of cells colored by EN-RAGE signature score. Each point represents a single  
22 cell, colored by the signature score value.  
23 C. Extended pseudo-bulk expression profiles including non-myeloid cell types. Each point  
24 represents the pseudo-bulk signature score for a cell type in a patient sample. Blue=healthy (BAL  
25 n = 3; PBMC, n = 3), orange=moderate (BAL, n = 3; PBMC, n = 8; hospitalized +/- supplemental  
26 O<sub>2</sub>), red=critical (BAL, n = 6; PBMC, n = 10; requiring mechanical ventilation), with severity  
27 defined within each published dataset by the original authors.  
28 D-G. Heatmaps of ENRAGE (D-E) and MS1 (F-G) signature genes in pseudo-bulk expression  
29 profiles in BAL and PBMC. Each row is a gene, each column is a cell cluster. Each row is z-score  
30 normalized within each dataset. LDG=low density granulocytes.  
31



32

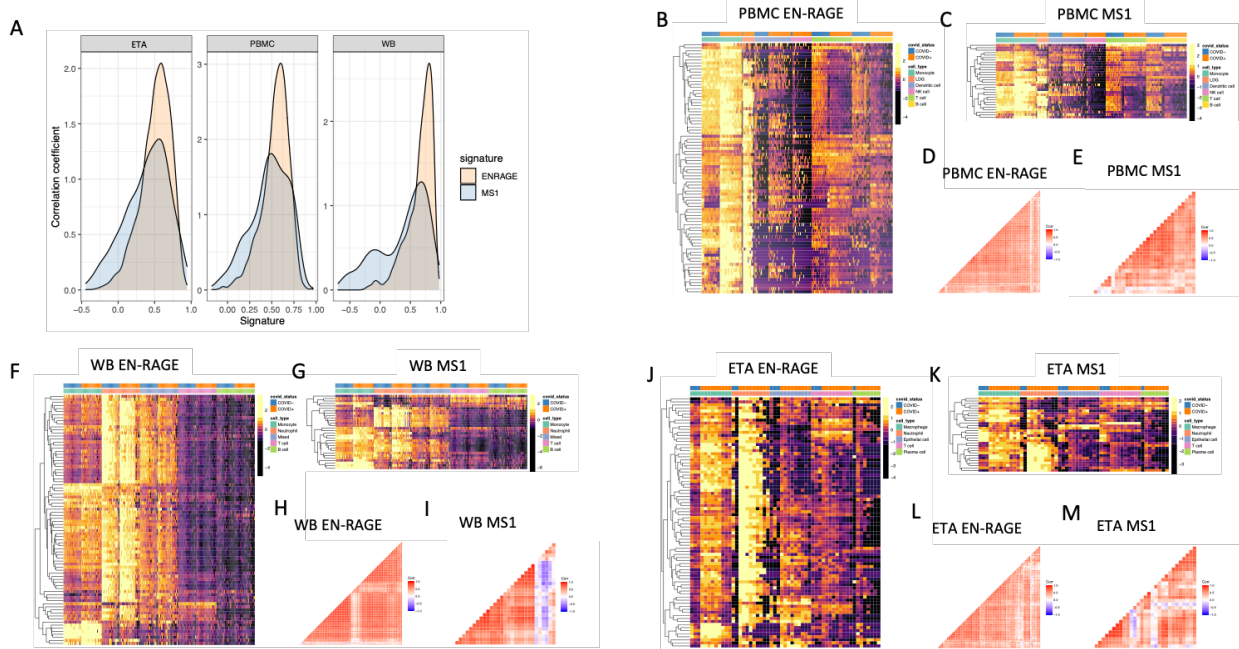


33



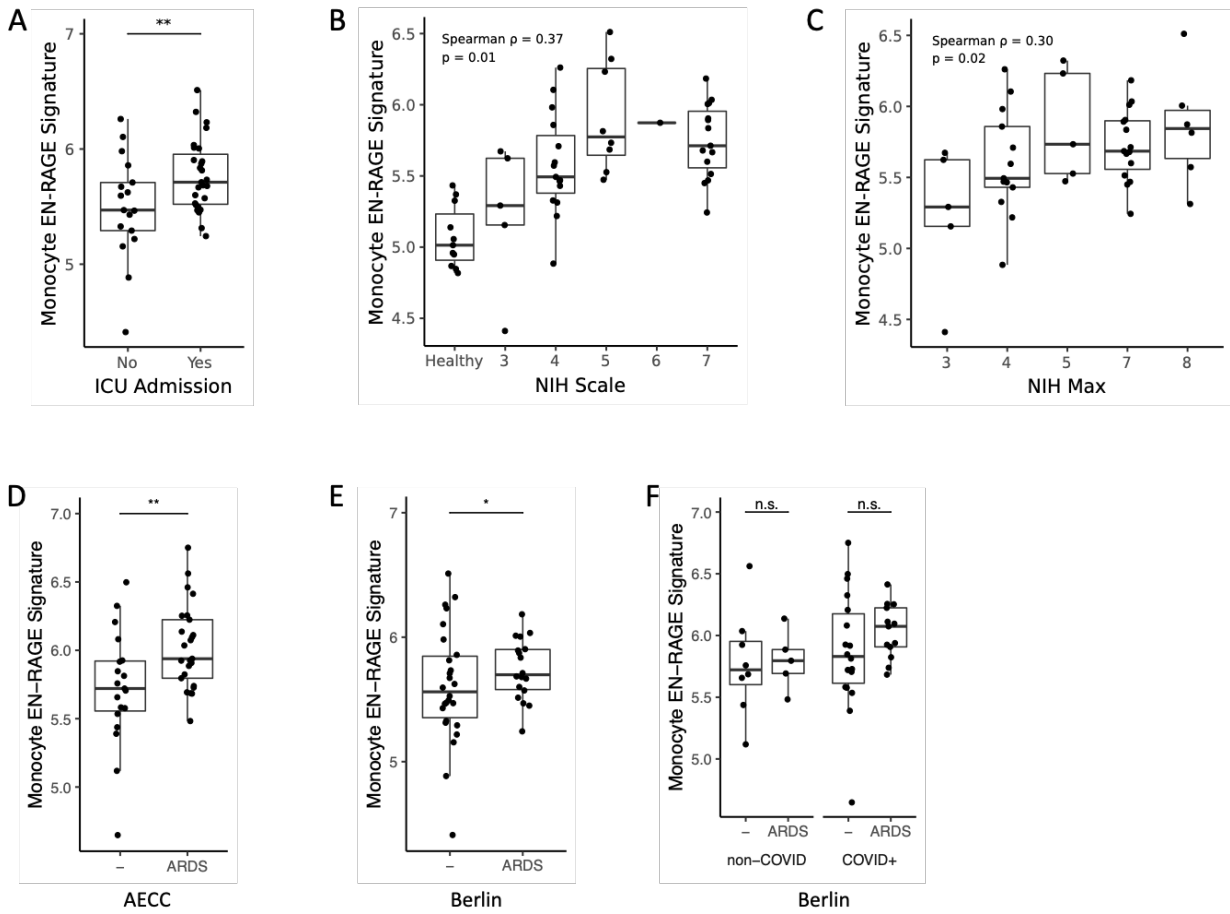
34

35 **Supplementary Figure 2.** Performance of ENRAGE signature across sample types (COMET  
 36 cohort). **A.** Pairwise Spearman correlation coefficients between genes within the ENRAGE and  
 37 MS1 gene signatures across three different compartments: ETA (n = 55), PBMC (n = 279), and  
 38 whole blood (n = 245). **B-E.** Heatmaps of gene expression (B-C) and pairwise gene correlations  
 39 (D-E) of ENRAGE and MS1 within the PBMC compartment (11). **F-I.** Heatmaps of gene  
 40 expression (F-G) and pairwise gene correlations (H-I) of the whole blood compartment (11). **J-M.**  
 41 Heatmaps of gene expression (J-K) and pairwise gene correlations (L-M) of ENRAGE and MS1  
 42 within the ETA compartment (7). Gene expression values were pseudobulked for each cell  
 43 population (sample + cell type) and the pairwise Spearman correlation coefficients were calculated  
 44 using the pseudobulked gene expression values. LDG=low-density granulocytes.



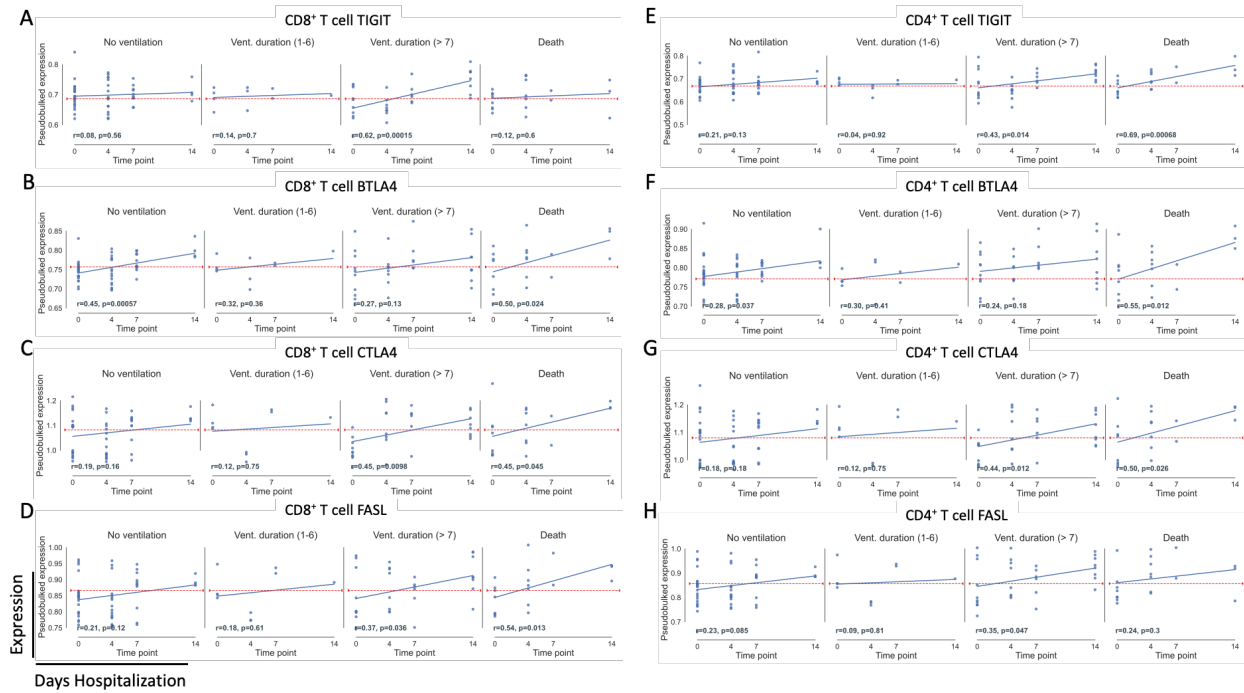
45  
 46

47 **Supplementary Figure 3.** EN-RAGE gene set expression in PBMCs is associated with increased  
 48 clinical severity and poor outcomes in the COMET cohort. **A.** Comparison of EN-RAGE signature  
 49 in monocytes from patients admitted to ICU compared to those not. **B-C.** Correlation between  
 50 baseline pseudobulk EN-RAGE gene set expression in myeloid cells and **B.** baseline NIH scale,  
 51 and **C.** maximal NIH scale (worst score recorded during hospitalization, excluding healthy  
 52 controls). Each dot represents one patient, n=49. **D-F.** Myeloid EN-RAGE gene set expression by  
 53 ARDS diagnosis. **D.** ARDS diagnosed using AECC criteria. **E.** ARDS diagnosed using Berlin  
 54 criteria. **F.** Berlin ARDS subset by COVID-19 status. Boxes represent first and third quartiles, the  
 55 centerline shows the median. Two-tailed t-test p-values are shown: n.s.= not significant, \*p<0.05,  
 56 \*\*p<0.01.



58

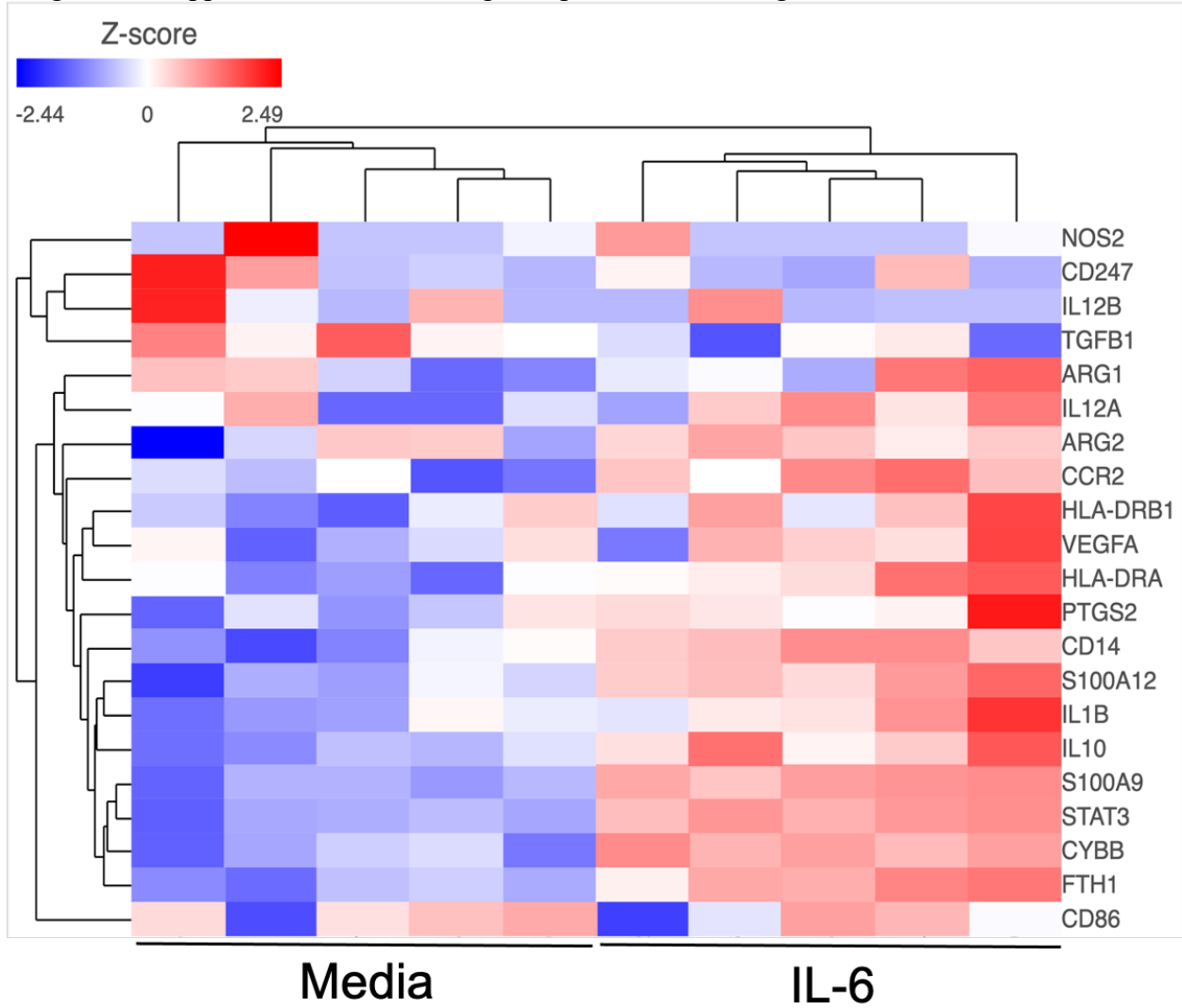
59 **Supplemental Figure 4.** Characterization of T cell immunosuppression phenotypes (COMET  
60 PBMC cohort; 128 samples from 60 patients [429, 505 cells]).  
61 Pseudobulked surface protein expression in 128 PBMC samples from 60 patients over 14 days in  
62 patients grouped by clinical outcomes. A-D. CD8<sup>+</sup> T cells. E-H. CD4<sup>+</sup> T cells. Blue line denotes  
63 the linear regression trend for gene expression over time. Red line denotes the average expression  
64 level in 11 healthy controls. Vent. duration = days of mechanical ventilation in survivors. Pearson  
65 correlation coefficients (r) and p values are indicated.  
66



67

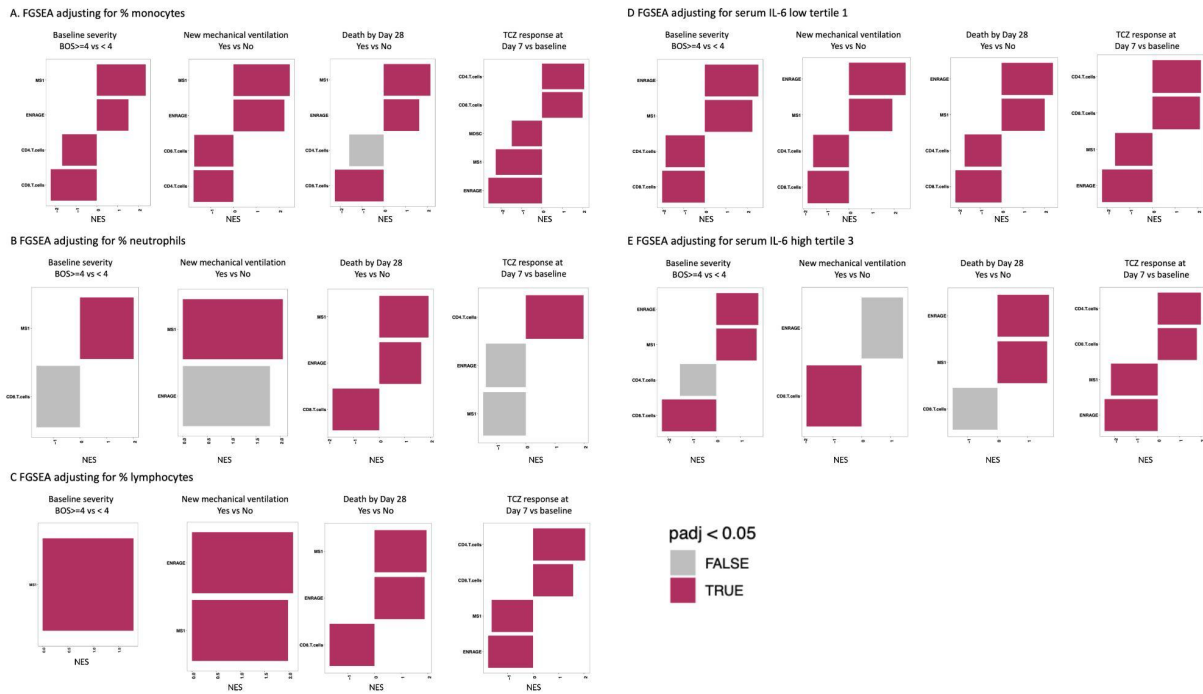
68  
69  
70

**Supplemental Figure 5.** IL-6 treatment of monocytes *in vitro* for 24 hours compared with media induces a gene program associated with potential T cell suppressive functionality. Heat map of the genes in Supplemental Table 1 using unsupervised clustering.



71

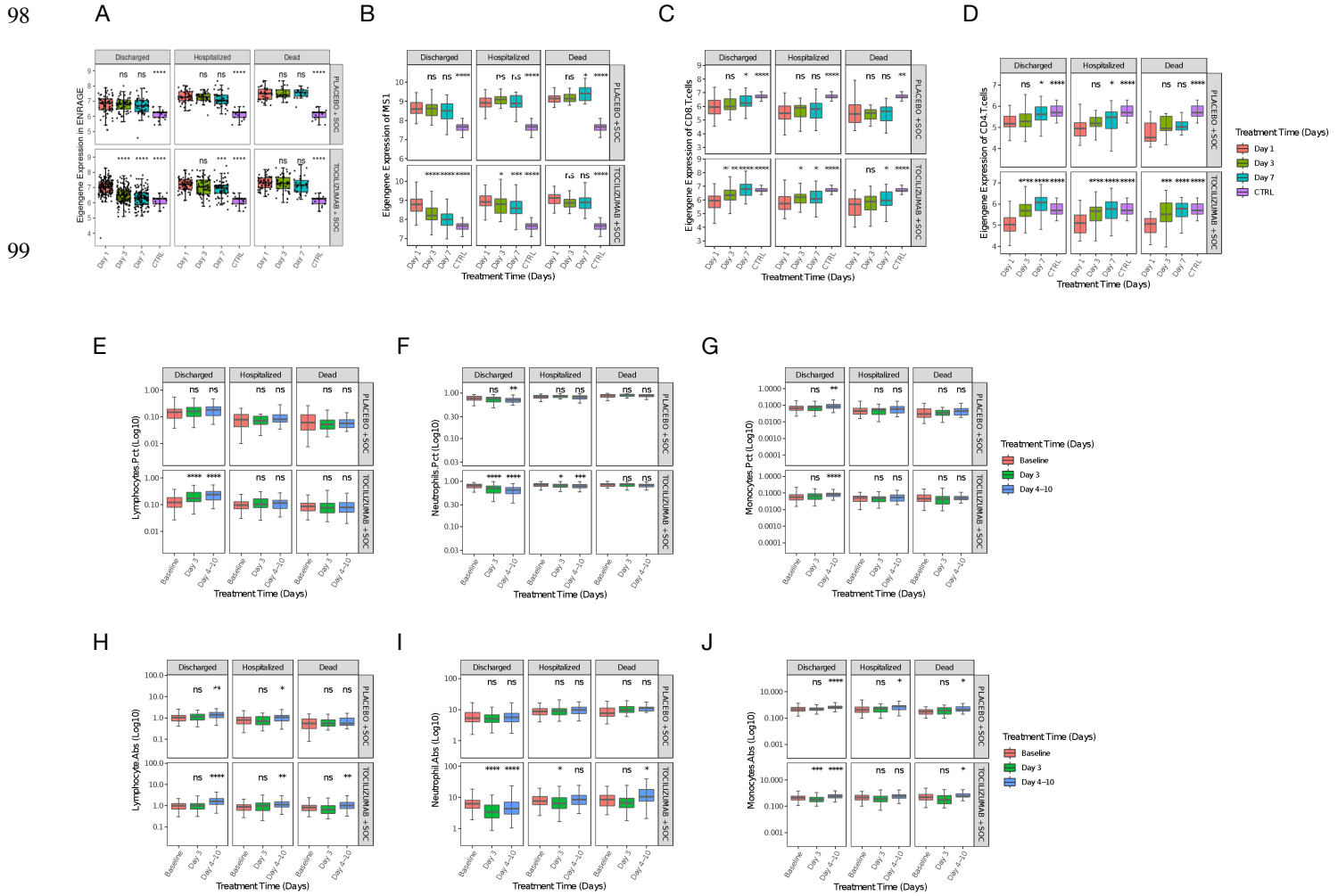
72 **Supplemental Figure 6.** Myeloid and T cell gene sets are associated with poor outcome in  
 73 COVID-19 patients and decreased by tocilizumab treatment.  
 74 GSEA for EN-RAGE and MS1 gene sets are similar. GSEA enrichments are consistent with those  
 75 in Figure 6B-E following adjustment for A. baseline blood % monocytes, B. baseline %  
 76 neutrophils, or C. baseline % lymphocytes. D-E. The effect of tocilizumab treatment is not  
 77 affected by baseline tertile of serum IL-6 protein levels, with 1=lowest tertile and 3=highest tertile.  
 78 GSEA are shown when FDR<0.05 (red) and shaded grey when p<0.01 but FDR>0.05.  
 79 NES=normalized enrichment score.



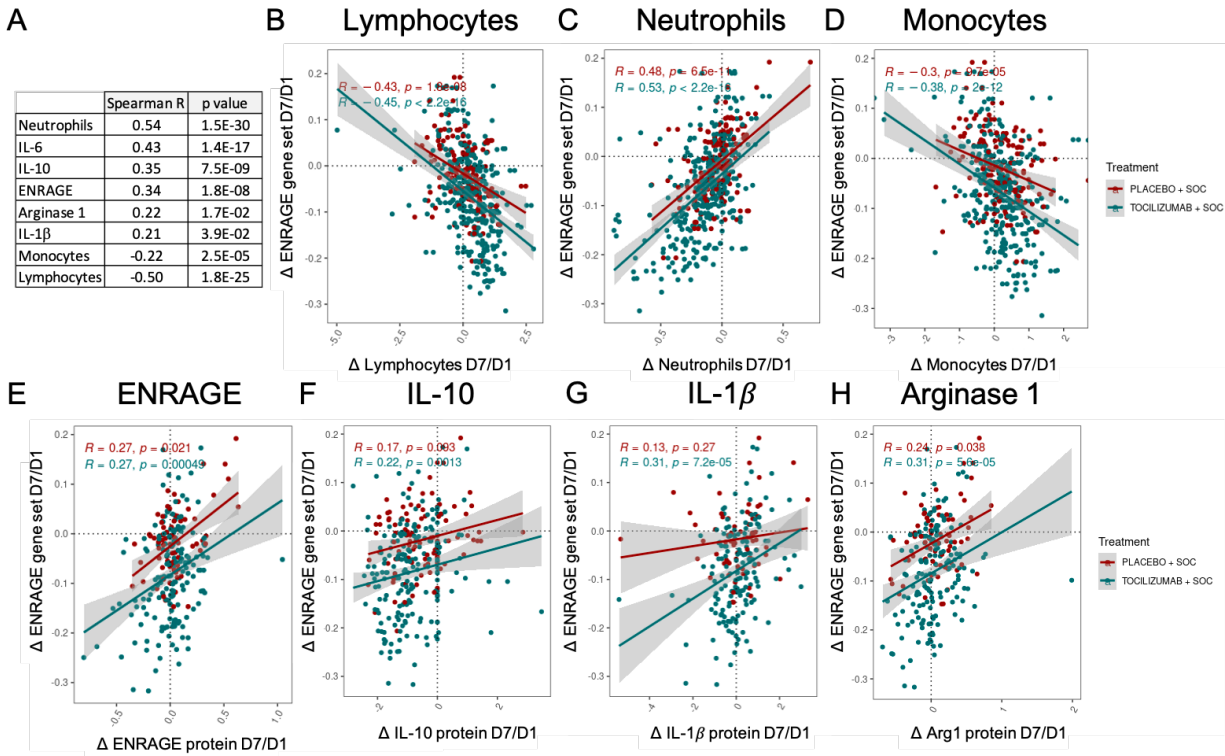
80  
81



82 **Supplemental Figure 7. A-D.** Tocilizumab increases expression of blood myeloid and T cell  
 83 signature genes and cell composition more than placebo over 7 days of treatment. Signature scores  
 84 are shown within each day, split by treatment arm and disease course and compared with healthy  
 85 controls (CTRL). Patients are split into those that were discharged before D28, those who remained  
 86 hospitalized, or subjects who died by day 28. Average signature scores are shown across the first  
 87 7 days of treatment for patients with measurements at all 3 time points. **A-B.** Tocilizumab  
 88 treatment decreases expression of **(A)** ENRAGE and **(B)** MS1 myeloid signatures in survivors. **C-**  
 89 **D.** Tocilizumab treatment increased expression of **(C)** CD8<sup>+</sup> and **(D)** CD4<sup>+</sup> T cell signatures in  
 90 survivors. **E-J.** Tocilizumab normalizes blood cell composition more rapidly than placebo. Blood  
 91 cell percentage **(E-G)** and absolute cell counts **(H-J)** are shown at D1 (pre-treatment) and D3 and  
 92 D4-D10 (post-treatment); FDR calculated relative to D1 \* = p < 0.05, \*\* = p < 0.01, \*\*\* = p <  
 93 0.001, \*\*\*\* = p < 0.0001, ns = non-significant. Significance testing was performed using either t-  
 94 test (A-D) or Wilcoxon rank-sum test (E-J). SOC = standard of care drug therapy. For box plots,  
 95 each point represents a patient sample, center lines depict the median value, the bottom and top of  
 96 the boxes show the first and third quartile, and whiskers show the most extreme point <1.5x the  
 97 interquartile range (IQR) from the bottom or top of the box.



100 **Supplemental Figure 8.** Effect of tocilizumab on blood cell counts and serum protein levels  
 101 relative to ENRAGE gene set expression Day 7 vs Day 1. A. Correlation of blood ENRAGE gene  
 102 set expression with serum proteins and blood cell counts on D1 prior to treatment. IL-10 was  
 103 measured by Protein Simple and IL-1 $\beta$ , ENRAGE, and Arg1 were measured by Olink. D-H.  
 104 Spearman correlations between change in blood ENRAGE gene set expression and change in  
 105 blood cell counts (B-D) and serum proteins (E-H) between D1 and D7. Each dot represents a  
 106 patient with available samples at D1 and D7, SOC = standard of care drug therapy.



108  
 109