

Supplemental Material

Semiology during video-EEG and OPM recording – Patient #7

During the video-EEG recordings, two types of seizure were recorded:

Type 1

Patient opens eyes, sits up if he was in supine position. For seizures that start when he is awake: he tries to say that he has a seizure, but does not finish sentence.

Looks frightened, eyes wide-open, face contorted. Left eye a bit more closed than right eye. Generalized increased tone for seconds (e.g. visible by raising of the shoulders), followed by hyperkinetic seizure with kicking, rocking movements with body, changing between sitting and lying down. Early in the seizure there is (if right-side is visible) a dystonia of the right hand. Large amplitude circular repetitive movement of the right arm. Eventually the movements stop, following which oromandibulaire automatisms (smacking/chewing), sometimes with right-sided manual automatisms, unforced slow head deviation to the left. Sometimes some noises/audible breathing. Impaired awareness. Post-ictally he speaks little and slowly, which may be aphasia, but is difficult to differentiate from a post-ictal state. During some seizures with initial hypermotor semiology as described above, this is not followed by temporal semiology, and patient also responds earlier when he is tested.

Type 2

Oromandibulaire automatisms, with some salivation, impaired awareness. Sometimes more subtle hyperkinetic semiology (subtle movements of legs/arms/trunk), generalized increased tone, blinking. Post-ictal possibly aphasia, but also difficult to differentiate from a post-ictal state (does not name, or very slow). On EEG these seizures have a right temporal onset and right temporal propagation pattern.

During the OPM recordings, the following semiology was observed:

Starts with eyes closed. Brief (~1 sec) blinking, then moves head forwards and back. Crosses arms in front of chest, looks up, frightened, with left eye closed and right eye wide open. Hypermobility, kicking, rocking movements with body and swinging left arm. Generalized increased muscle tone, unforced slow head deviation towards left, face contorted with mouth wide-open, following which some oromandibulaire

34 automatisms (chewing). Early in the seizure there is a dystonia of the right hand.
35 Eventually fewer movements, and leaning backward towards the left. Then sits straight
36 and removes bandage from left arm and wipes nose with left arm. Impaired awareness.
37 Remains restless for several minutes: head movements, intermitted eyes-open, fiddling
38 with chin-strap, oromandibulaire automatisms, wipes nose with left arm.

39

40 **Conclusions**

41 The semiology observed during the OPM recording is in agreement with the semiology
42 observed for seizures of Type 1 during video-EEG. sEEG has shown that these have a
43 left temporal onset and propagation, or right frontal/temporal onset with rapid
44 propagation to left temporal, with a further left temporal propagation (see also Table
45 1).

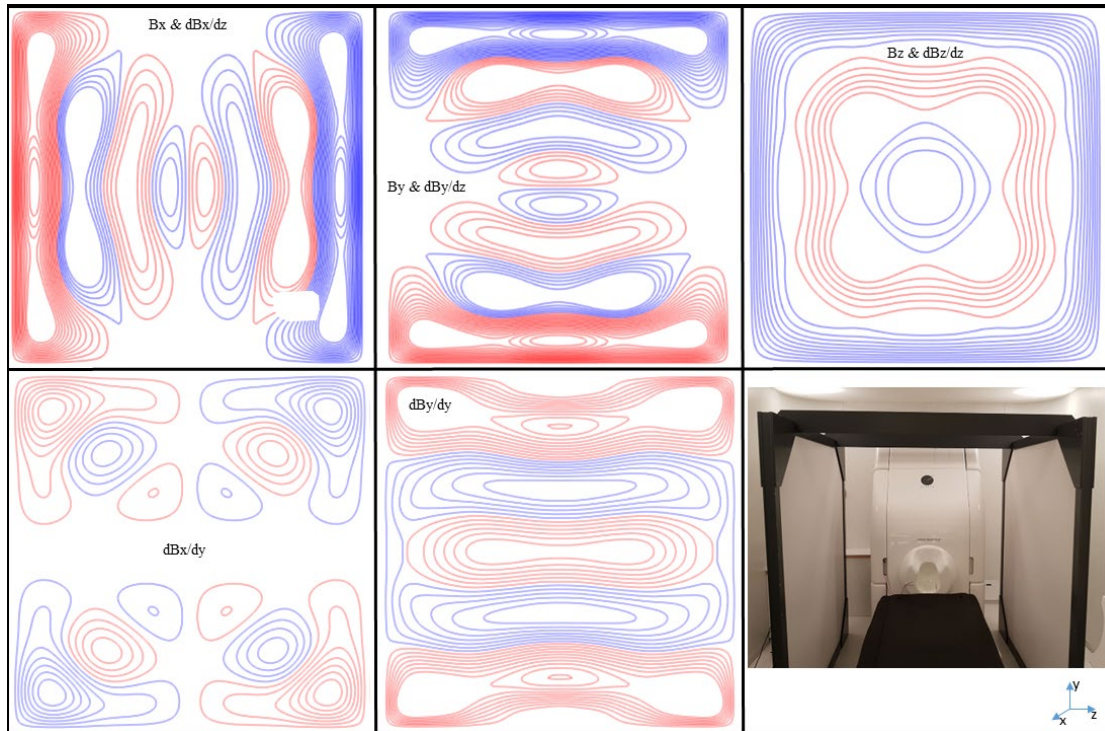
46 **Automatic identification of interictal epileptiform discharges**

47 Interictal epileptiform discharges (IEDs) were automatically identified using a matlab-
48 implementation of the BrainSpike algorithm in BrainWave (version 0.9.162.4;
49 developed by C.J.S.; available from <https://home.kpn.nl/stam7883/>). The algorithm
50 detects spikes in sliding 1-sec windows, using steps of half a second. The windowed-
51 data in a channel is converted to Z-scores, based on the mean and standard deviation
52 for that window. If an event with a maximum Z-score exceeds a threshold within the
53 middle 500 msec of the window (a threshold of 4, 3.5, 3.5, and 4.5 was used for patient
54 #1, #3, #4, and #6, respectively), and if the event has a minimum and maximum duration
55 (defined as the time between zero-crossings) of 20 and 200 msec, respectively, then it
56 is marked as a potential IED. The algorithm was re-run on negated data in order to also
57 identify ‘negative’ IEDs, and the IED with the maximum Z-score within a window, and
58 across channels, was kept. Thus, a single Z-value was obtained for each IED, which
59 was used as a proxy for the IED’s SNR.

60 In order to reduce the number of false positives, the algorithm was run on only
61 a selection of channels. The channel-selection was based on the field maps of the IEDs
62 that had already been identified on the basis of a visual analysis of the data.

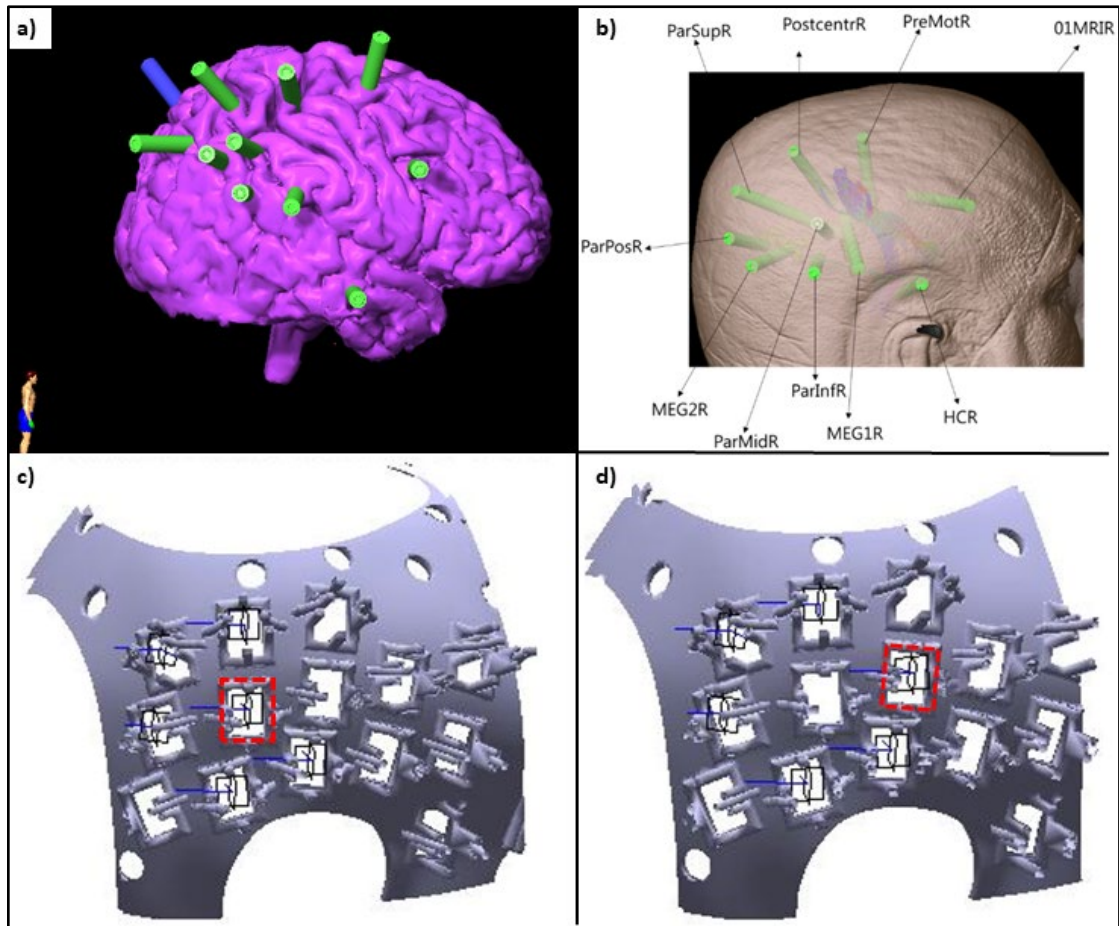
63 **Supplemental Figures**

64

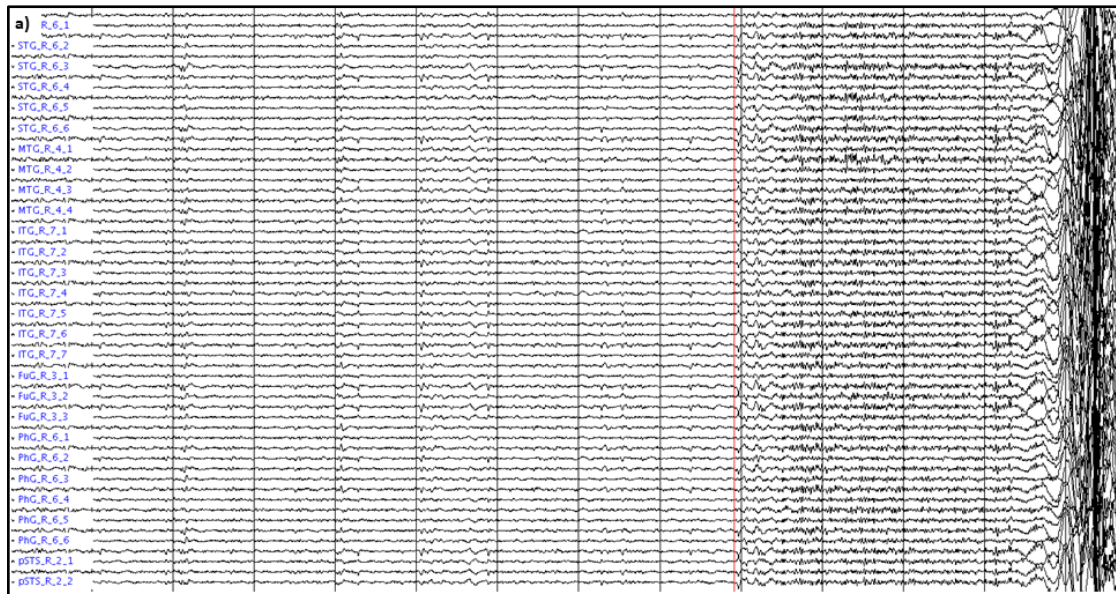


65

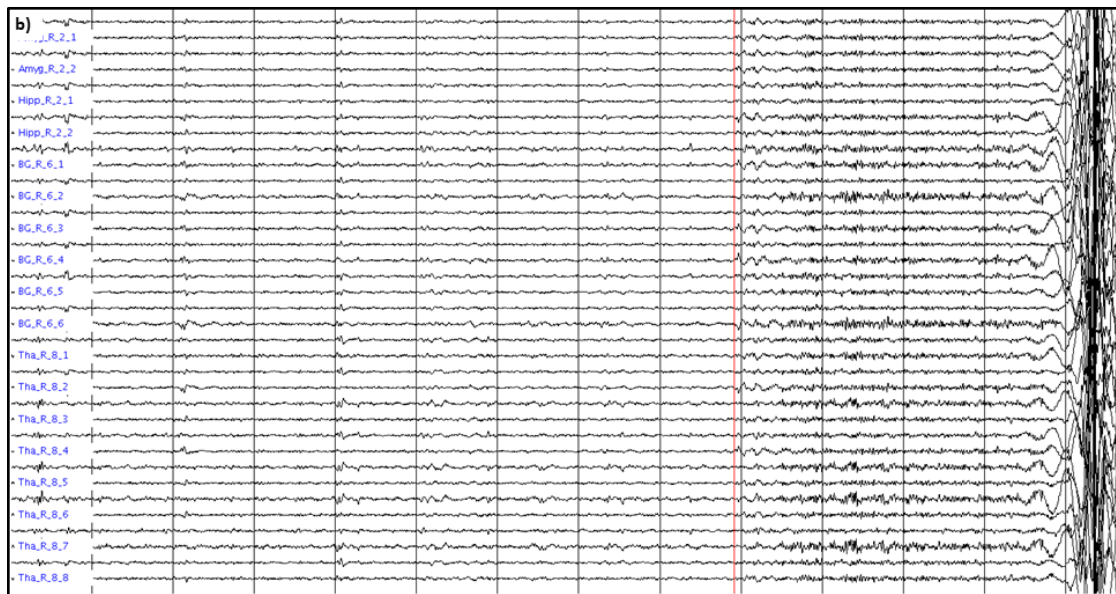
66 **Figure S1: Bi-planar nulling coils.** The natural symmetry shared by pairs of coils (B_x & dB_x/dz , B_y & dB_y/dz , and B_z & dB_z/dz) was used in order to reduce the number of coils needed to minimise the field
67 in all 3 directions, as well as the (linear) field gradients in the z-direction by a co-optimised coil design
68 process (Holmes et al., 2019). Red and blue coloured wirepaths denote regions of opposing current flow.
69 For the B_x & dB_x/dz , B_y & dB_y/dz coils driving the two planes with equal and opposite input currents
70 generates a uniform magnetic field, driving the two planes with equal and same-signed currents generates
71 a linear magnetic field gradient. For the B_z & dB_z/dz coil, driving the two planes with equal and same-
72 signed input currents generates a uniform magnetic field, driving the two planes with equal and opposite
73 currents generates a linear magnetic field gradient. Two coils were added to allow nulling of the dB_y/dy
74 and dB_x/dy gradients, in this case there is no shared symmetry which can be exploited so the windings
75 of each plane were connected in anti-series. Grooves for each coil wirepath were routed into Forex PVC
76 (polyvinylchloride) planes of $1.8 \times 1.8 \text{ m}^2$. Enamelled copper wire of diameter 0.56 mm was pressed into
77 the grooves and fixed in place with tape at strategic positions. A front panel was added to prevent galvanic
78 contact between the patients and the coils, and the stacked planes were placed inside a PVC frame (see
79 lower-right sub-figure). The balanced coil pairs were connected individually, and the dB_y/dy and dB_x/dy
80 coils in anti-series, to low-noise, 4 V , coil drivers (QuSpin Inc). Using this setup, the coils can generate
81 uniform fields or field gradients within a $40 \times 40 \times 40 \text{ cm}^3$ volume between the centre of the panels. Bi-
82 planar coil systems similar to those described here are commercially available (e.g. from Cerca Magnetics
83 Limited, Nottingham, UK).
84



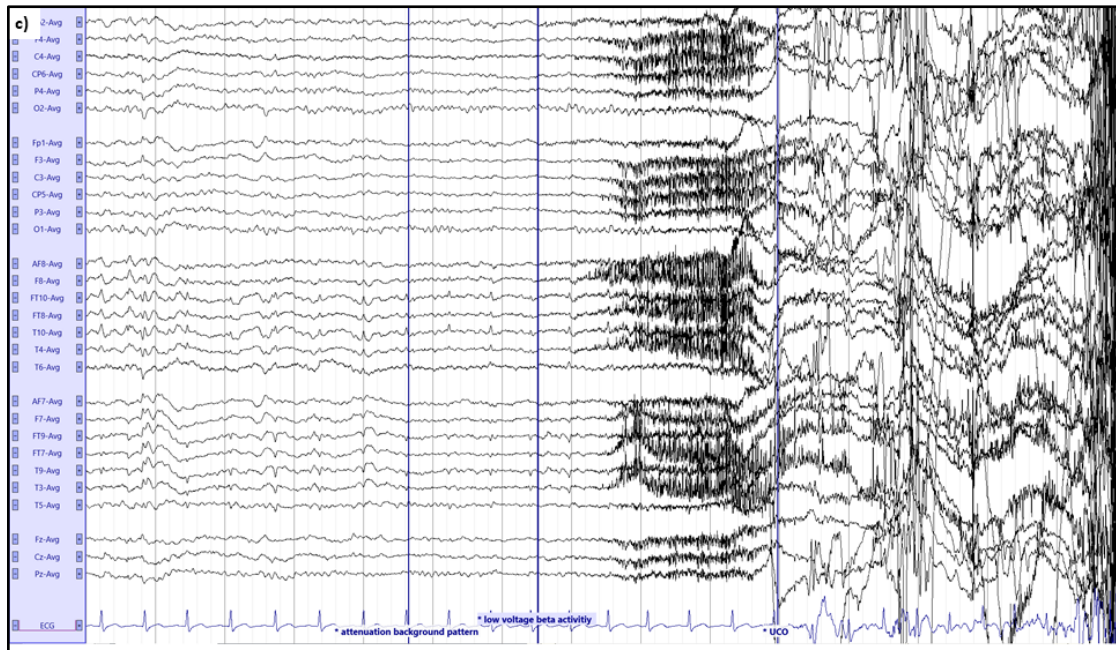
85
 86 **Figure S2: sEEG setup and OPM-placement for patient #3.** Panels **a)** and **b)** show the depth-
 87 electrodes (green) with respect to the brain and scalp, respectively. The OPMs were placed over the right
 88 superior temporal/parietal lobe (electrode with label 'MEG1R') as this is where seizures started in the
 89 sEEG recordings, and where previous clinical MEG had localised IEDs. Using the OPM placement as in
 90 panel **c)**, the OPM that is indicated with a red rectangle recorded IEDs in the Bz channel. When this OPM
 91 was moved forward (panel **d)**), IEDs were not visible anymore. Blue arrows indicate the OPMs' sensitive
 92 axes (B_y and B_z), with B_y approximately parallel to the head and B_z approximately perpendicular to the
 93 head.



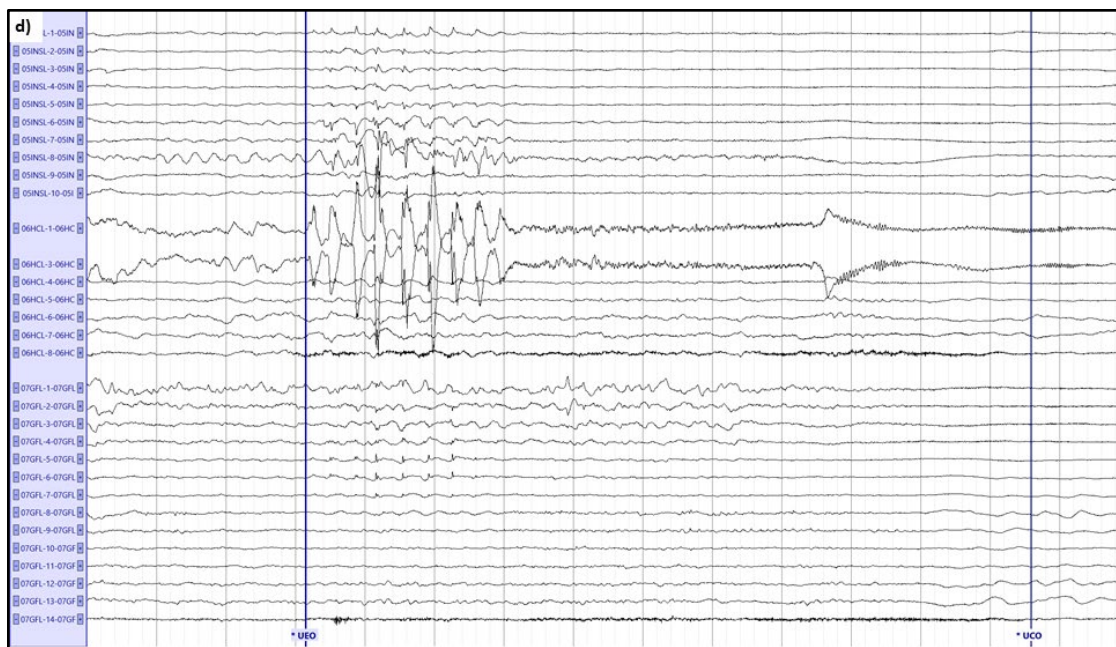
94



95



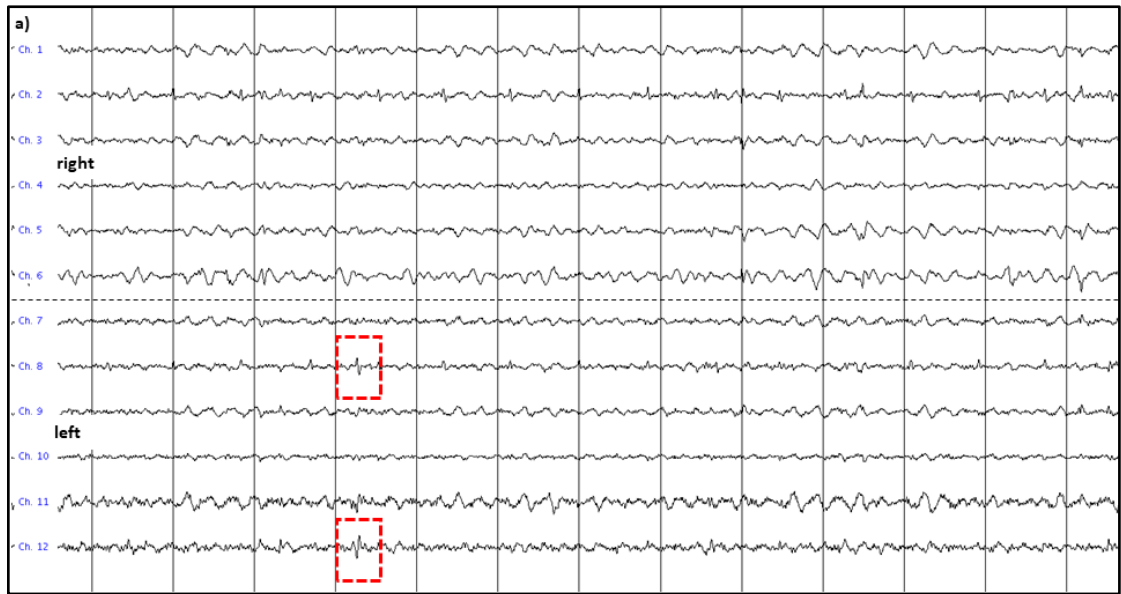
96



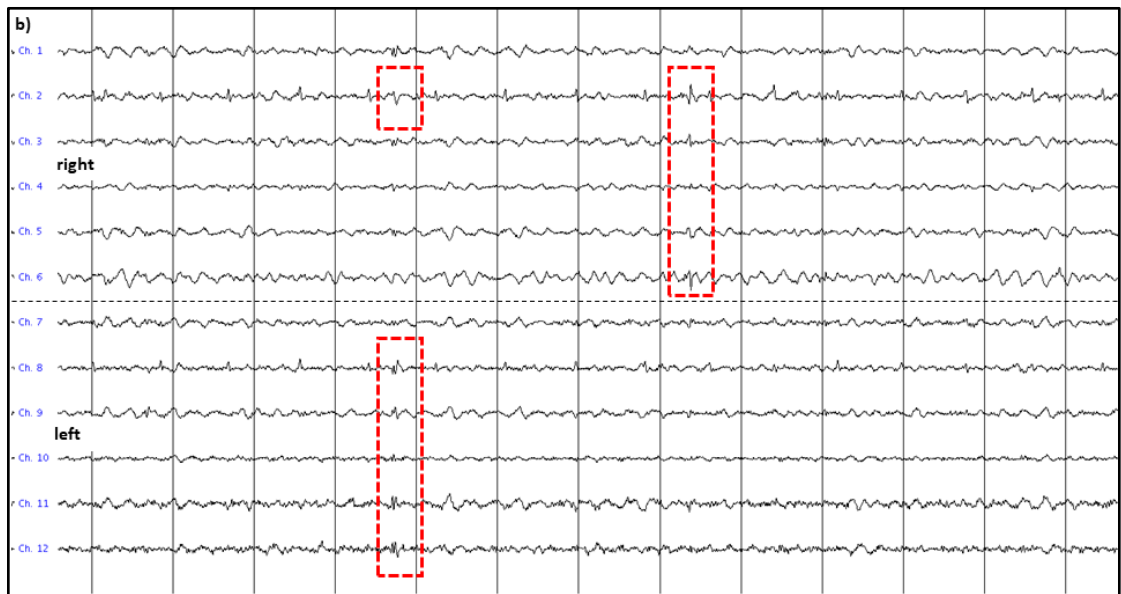
97

98 **Figure S3: Ictal onset for patient #7.** Source-reconstructed OPM data for temporal (a) and subcortical
 99 (b) channels in the BNA atlas (see (Fan et al., 2016) for nomenclature). Channels from left and right
 100 hemisphere are alternated. The grey vertical lines mark 1 second of data, that were filtered between 3 -
 101 48 Hz. Note the increase in fast activity, simultaneously in both hemispheres, after about 9 secs (red
 102 vertical line), marking the start of the seizure. This is followed by artefacts due to movement during the
 103 seizure. Panel c shows a segment of seizure activity, Type 1, from a video-EEG recorded in 2021. Seizure
 104 from drowsy state, EEG applied according to the 10-20 system with extra electrodes from the 10-10
 105 system (anterior frontal (AF7/8), frontotemporal (FT9/10, FT7/8), temporal (T9/10), centroparietal
 106 (CP5/6)). Average montage. The grey vertical lines mark 1 second of data, amplitude 70 $\mu\text{V}/\text{cm}$, high
 107 and low pass filter of 0.27 Hz and 15.0 Hz, respectively. The seizure starts with attenuation of the
 108 background pattern (1st blue vertical line from the left), followed with diffuse beta activity (2nd blue
 109 vertical line; mainly fronto-temporal), then beta mixed with muscle artefact (although no patient
 110 movements were visible yet), followed by large movement artefacts. Note the similarity in temporal
 111 evolution in the video-EEG and OPM recording. Panel d shows a segment of seizure activity, Type 1,
 112 from an sEEG recording from 2021. Only electrodes involved in the seizure onset are depicted (05INSL:
 113 entry: frontal, target: anterior insula. 06HCL: entry: temporal, target: left hippocampus. 07GFL: entry:
 114 temporal, target: left fusiform gyrus). Bipolar montage. The grey vertical lines mark 1 second of data,

115 amplitude 700 $\mu\text{V}/\text{cm}$, high and low pass filter of 0.27 Hz and 100 Hz, respectively. UEO: unequivocal
116 electrographic onset. UCO: unequivocal clinical onset. Seizure onset (1st blue vertical line): 2.5 Hz
117 spike-wave complexes on position 6HCL1-3, also visible at 5INSL1-8 and less pronounced at 7GFL1-8,
118 followed by irregular high frequency activity and subsequent beta activity with a frequency of ~ 20 Hz
119 on 06HCL1-3. Seizure propagation (not shown) in consecutive order: left posterior temporal lobe (GFL),
120 left anterior cingulate cortex (anterior and dorsal part) and left frontobasal area.



121



122



123

124 **Figure S4: Interictal activity for patient #7.** Independent IEDs were observed over the left **(a)** and right
125 **(b)** temporal lobes, as well as simultaneously over both temporal lobes **(b)**. The first 6 channels were
126 placed over the right hemisphere and the last 6 channels over the left hemisphere; alternating channels
127 show recording in the OPMs' By and Bz direction. Note the ECG artefact on channel 2 and 8, which was
128 removed/reduced through beamforming **(c)**. Panel **c** shows the same segment of data as in panel **b**,
129 source-reconstructed to the subcortical channels in the BNA atlas. Channels from left and right
130 hemisphere are alternated. The grey vertical lines mark 1 second of data, that were filtered between 3 -
131 48 Hz.