

SUPPLEMENT

BIOLOGICAL RHYTHMS IN COVID-19 VACCINE EFFECTIVENESS

Guy Hazan, M.D., Ph.D.¹⁻³, Or A. Duek, PhD^{4,5}, Hillel Alapi, B.A.⁶, Hiram Mok, MD¹, Alex Ganninger¹, Elaine Ostendorf¹, Carrie Gierasch, B.S.¹, Gabriel Chodick, Ph.D.^{6,7}, David Greenberg, M.D.^{8,9}, and Jeffrey A. Haspel, M.D., Ph.D.^{1*}.

¹Division of Pulmonary and Critical Care Medicine, Department of Internal Medicine, Washington University School of Medicine, St. Louis, MO, USA.

²Department of Pediatrics, Soroka University Medical Center, Beer-Sheva, Israel.

³Research and Innovation Center, Saban Childrens Hospital, Beer-Sheva, Israel.

⁴Department of Psychiatry, Yale University School of Medicine, New Haven, CT, USA.

⁵Department of Epidemiology, Biostatistics and Community Health Sciences, Faculty of Health Sciences, Ben-Gurion University of the Negev, Beer-Sheva, Israel

⁶Maccabitech Institute for Research and Innovation, Maccabi Healthcare Services, Tel Aviv, Israel.

⁷Sackler Faculty of Medicine, Tel Aviv University, Tel Aviv, Israel.

⁸The Pediatric Infectious Disease Unit, Soroka University Medical Center, Beer-Sheva, Israel.

⁹Faculty of Health Sciences, Ben-Gurion University of the Negev, Beer-Sheva, Israel.

*Corresponding author contact information: Jeffrey Haspel, Division of Pulmonary and Critical Care Medicine, Department of Internal Medicine, Washington University School of Medicine, Campus Box 8052, 660 South Euclid Avenue, St. Louis, MO, 63110, USA. Email: jhaspel@wustl.edu

TABLE OF CONTENTS

eAppendix 1: Study oversight	4
eAppendix 2: Background on COVID-19 vaccinations in Israel	5
eAppendix 3: Selection of variables for Cox multivariate regression	6
eAppendix 4: Cox Model Sensitivity Analysis	7
eFigure 1: COVID-19 vaccination schedule in the MHS cohort.	8
eFigure 2: Distribution of COVID-19 positivity across the day as a function of COVID-19 vaccine timing.	9
eFigure 3: Plot of scaled Schoenfeld residuals for vaccination timing over the study period	10
eTable 1: Outcome variable definitions	11
eTable 2: Clinical covariate definitions	13
eTable 3: Results of Schoenfeld's Global test for proportional hazards assumption	18
eTable 4: Multivariate logistic regression model for association with COVID breakthrough infection post vaccine doses 1 and 2	19
eTable 5: Bootstrap multivariate analysis (2000 rounds) for the association with COVID infection post two vaccine doses	20
eTable 6: Cox multivariate regression analysis of breakthrough infection after COVID-19 vaccination: morning vs. evening timing	21
eTable 7: Cox multivariate regression analysis of breakthrough infection after COVID-19 vaccination: morning vs. afternoon timing	22
eTable 8: Cox multivariate regression analysis of breakthrough infection visits after COVID-19 vaccination: afternoon vs. evening timing	23
eTable 9: Cox multivariate regression analysis of emergency department (ED) visits after COVID-19 vaccination: morning vs. evening timing	24
eTable 10: Patient demographic breakdown for sinusoidal analysis of breakthrough infections (Figure 3)	25
eTable 11: Breakthrough COVID-19 infection hazard ratio (HR) comparing AM (8:00-9:59) vaccination to the indicated times	26
eTable 12: COVID-19 associated ED visit hazard ratio (HR) comparing AM (8:00-9:59) vaccination to the indicated times	27
eTable 13: METACYCLE output for data presented in Figures 3 and 4	28
eTable 14: Breakthrough COVID-19 infection hazard ratio (HR) as a function of age bracket, comparing AM (8:00-11:59) to PM (16:00-19:59) vaccination times.	29
eTable 15: Breakthrough COVID-19 infection hazard ratio (HR) in patients 12-30 years old, comparing AM (8:00-9:59) vaccination to the indicated times	30
eTable 16: Breakthrough COVID-19 infection hazard ratio (HR) in patients 30-60 years old, comparing AM (8:00-9:59) vaccination to the indicated times	31
eTable 17: Breakthrough COVID-19 infection hazard ratio (HR) in patients >60 years old, comparing AM (8:00-9:59) vaccination to the indicated times	32

eTable 18: Distribution of COVID-19 tests in the study population.....	33
References.	34

eAppendix 1

Study Oversight.

Dr. Hazan and Dr. Haspel conceived the study. All the authors contributed to the study design. Data were extracted by Hillel Alapi. Dr. Hazan, Dr. Duek, and Gabriel Chodick oversaw the data gathering. All authors contributed to the data analysis. Dr. Hazan and Dr. Haspel wrote the initial manuscript. All authors vouch for the data and analysis. All authors participated in the editing and critical review of the manuscript and decided to submit it for publication. The study was approved by the MHS Ethical Committee.

eAppendix 2

Background on COVID-19 vaccinations in Israel.

In December 2020, Israel launched a national immunization campaign against COVID-19 consisting almost exclusively of the Pfizer BNT162b2 vaccine series delivered in two doses 3-4 weeks apart (**Figure S1**). In July and September 2021, the Israeli Ministry of Health initiated third (first booster) and fourth (second booster) dose campaigns, respectively. Vaccines and COVID-19 testing were provided free of charge to all citizens. While at-home antigen tests were available, the Israeli Ministry of Health required a documented positive test prior to quarantine and a negative test after quarantine before issuing a certificate of recovery to patients (<https://corona.health.gov.il/en/confirmed-cases-and-patients/cases-recovered/>). Thus, censoring of COVID-19 infection is unlikely in our cohort as there was strong incentive to obtain a laboratory diagnosis even if initial testing occurred at home.

Among 1,624,601 MHS participants over 12 years of age 1,594,180 (98.13%) received the Pfizer BNT162b2 vaccine, 29,253 (1.8%) received the Moderna mRNA-1273 vaccine, 437 (0.03%) received the Astra Zeneca ChAdOx1-S product, 400 (0.02%) received Sputnik V, 232 (0.01%) received the Jansen Jcovden vaccine, 46 (0.003%) received the Sinovac CoronaVac product, and for 53 patients (0.003%) the vaccine identify was unspecified.

eAppendix 3

Selection of variables for Cox multivariate regression.

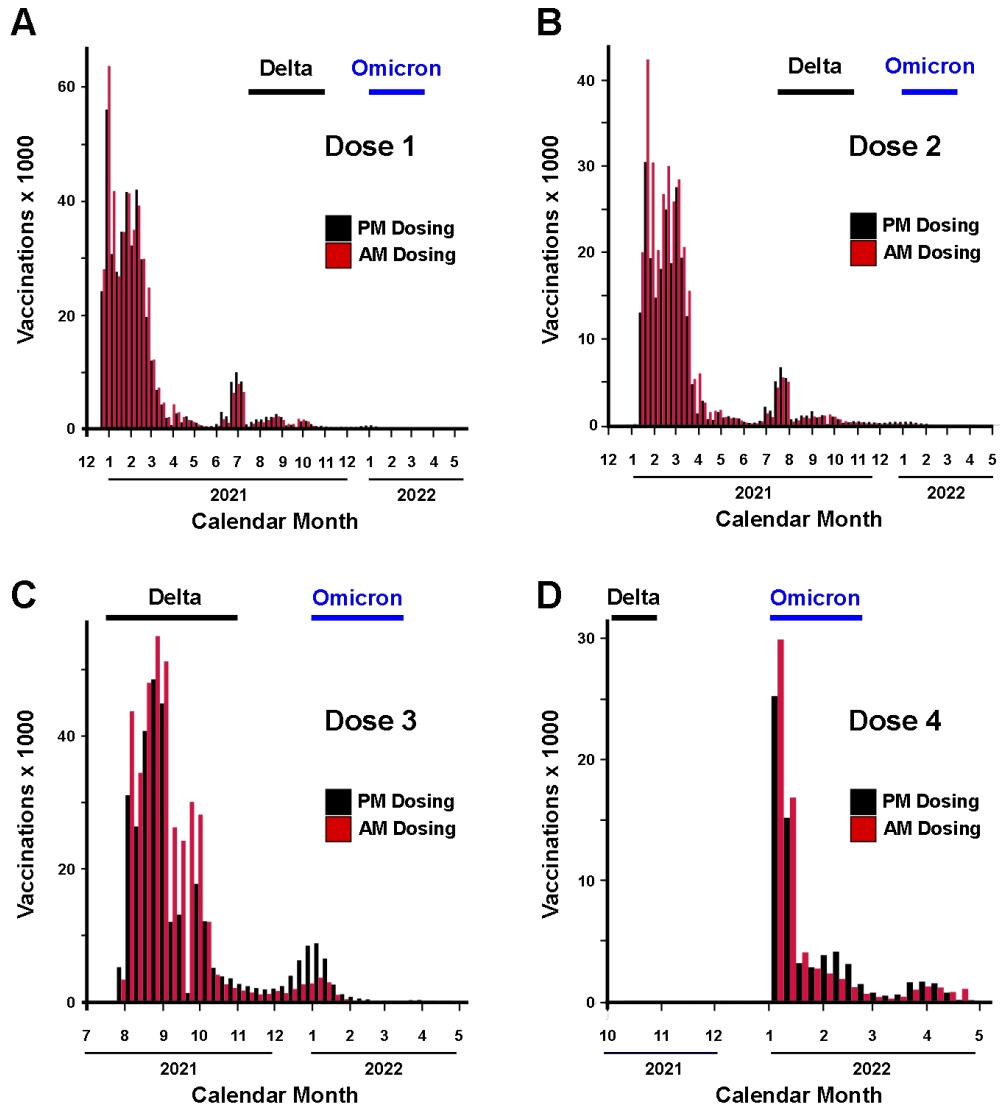
We conducted multivariate cox regression model based on clinical relevance and univariate comparison. As a starting point, we included variables who known to be associated with vaccine effectiveness based on previous publications¹⁻³. Then, we interrogated violation of Cox assumptions for the variables of interest by computing a Schoenfeld global test (see “Cox model sensitivity analysis” in the Supplementary Appendix below). Variables that were associated with outcomes measured (breakthrough COVID-19 infection or COVID-19-related emergency room visit) with a $p < 0.1$ in the univariate comparison were included in the multivariate model. For the multivariate analysis we used goodness of fit parameters (AIC – Akaike Information Criterion = $-2 \text{ Log likelihood} + 2p$) with a backward elimination approach.

eAppendix 4

Cox model sensitivity analysis.

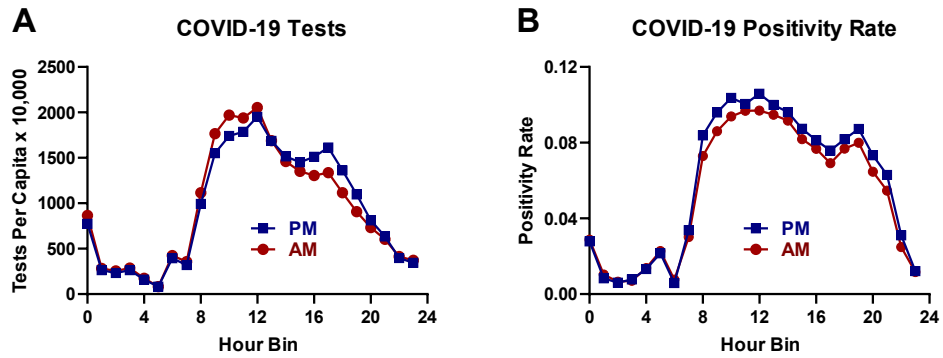
Typically, a Schoenfeld's global test is used to validate the assumption of Cox proportional hazards. However, the large sample sizes of our study present a challenge to this approach since this leads to over-powering⁴. We found evidence of this in our data by applying the Schoenfeld's global test on stratified data with smaller sample sizes (**Table S3**), demonstrating reduction in test significance compared to the complete dataset. Therefore we used two alternate approaches to orthogonally validate results from our Cox model as recommended⁴: multivariate logistic regression (**Table S4**) and bootstrap multivariate analysis (**Table S5**). For logistic regression, we applied the same multivariate Cox regression model, with the exception that follow-up time was not included. The reason for this modification was our goal with logistic regression was to validate the trend rather than the effect size estimated by the Cox model, and that follow-up times were not materially different between vaccination groups (**Table 1**). For bootstrap analysis, we sampled the entire cohort with 2,000 iterations with replacement calculating hazard ratios and confidence intervals for the same multivariate regression model. Results from both approaches showed similar trends as our multiple Cox regression model, supporting this approach for analyzing the data. As additional support, a plot of scaled Schoenfeld residuals for the variable time-of-vaccination demonstrated stable proportional hazard ratios across the study period (**Fig. S3**)⁵.

eFigure 1



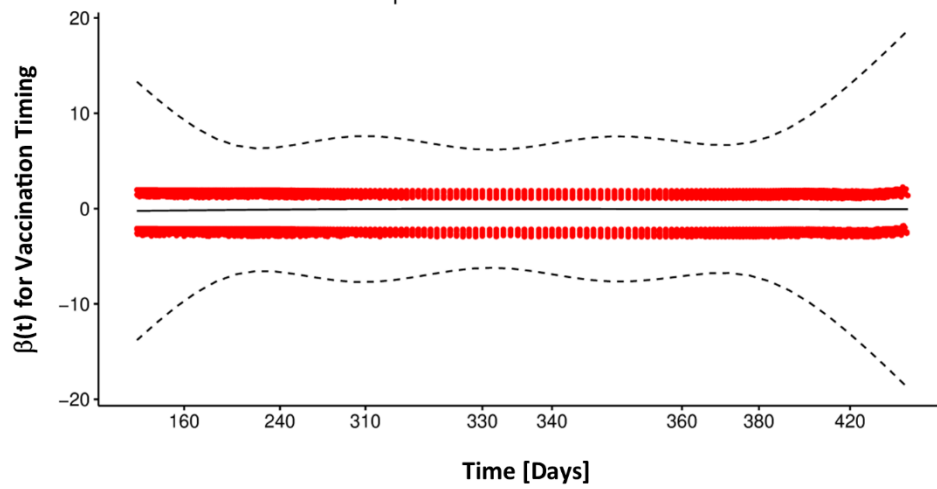
eFigure 1. COVID-19 vaccination schedule in the MHS cohort. Bars represent the number of vaccines given between 8:00-11:59 (AM dosing, red bars) and 16:00-19:59 (PM dosing, black bars). Calendar months are depicted numerically with 1 representing January and 12 representing December. Spikes in infection rates within the Israeli population caused by the delta and omicron SARS-CoV-2 variants as reported by the Israeli Ministry of Health (MOH) are indicated by black and blue horizontal bars, respectively. **Panels A-D** show vaccine doses over time for the first (A), second (B), first booster (third dose, C), and second booster doses (fourth dose, D).

eFigure 2



eFigure 2. Distribution of COVID-19 positivity across the day as a function of COVID-19 vaccine timing. Panel A and B show the distribution of total COVID tests (A) and positivity rates (B) across the day for patients receiving the initial COVID-19 vaccine series (doses 1 and 2). AM, patients immunized between 8:00-11:59 (red symbols). PM, patients immunized between 16:00-19:59 (blue symbols). For sample sizes and tabular presentation of these data see eTable 18.

eFigure 3



eFigure 3. Plot of scaled Schoenfeld residuals for vaccination timing over the study period. Dashed lines, 95% CI. For discussion of Cox proportional hazards assumption, see “Covid Model Sensitivity Analysis” in the Supplemental Appendix.

eTable 1: Outcome variable definitions. Note, we report all outcome variables extracted for this project regardless of whether they entered into the analysis reported by this manuscript.

Variable	Values	Definitions	Timing
Documented SARS-CoV-2 Infection	0/1	A PCR confirmed infection.	The date and time-of-day of a specimen collection that was found to be positive in a PCR test. If the PCR test was done after the beginning of a hospitalization flagged as a COVID-19 hospitalization, the infection date was set to the beginning of the hospitalization.
Documented SARS-CoV-2 Infection		A PCR: Cycle threshold number.	
Asymptomatic SARS-CoV-2 Infection	0/1	A PCR-confirmed infection with no report of symptoms during referral and during initial physician questioning.	The date set for the SARS-CoV-2 infection outcome.
COVID-19 (symptomatic SARS-CoV-2 Infection)	0/1	A PCR-confirmed infection with report of symptoms during the PCR referral / during the follow-up in the community setting / COVID-19 related hospitalization / COVID-19 related death. Existing symptoms were considered when the physician or nurse checked the "symptomatic" option in the EMR, or when the following specific symptoms were recorded: fever or chills, cough, shortness of breath or difficulty breathing, sore throat, headache, weakness, congestion or runny nose, myalgia, nausea or vomiting, diarrhea, abdominal pain, loss of taste or smell, inability to eat or drink.	The date set for the SARS-CoV-2 infection outcome.

COVID-19 related emergency room visit	0/1		Date and time-of-day
COVID-19 related hospitalization	0/1	A hospitalization that was reported to the Israeli Ministry of Health (MOH) as a hospitalization of a SARS-CoV-2 infected individual.	The start date of the hospitalization.
COVID-19 related severe state	0/1	As defined by the hospitalizing institution per the Israeli MOH guidelines, consistent with the NIH criteria for severe illness or critical illness: Individuals who have oxygen saturation (SpO ₂) <94% on room air at sea level, a ratio of arterial partial pressure of oxygen to fraction of inspired oxygen (PaO ₂ /FiO ₂) <300 mm Hg, respiratory frequency >30 breaths/min, or lung infiltrates >50%. Critical Illness: Individuals who have respiratory failure, septic shock, and/or multiple organ dysfunction.	The first date during the hospitalization in which the individual was flagged as being in a severe or critical state.
COVID-19 related death	0/1	A death of a SARS-CoV-2 infected individual reported to the Israeli MOH.	The reported date of death.
COVID-19 vaccine-related side effect	0/1		
SARS-CoV-2-IgG serology post COVID-19 vaccine	0/1	Level of SARS-CoV-2-IgG	Date of the test and time-of-day

eTable 2: Clinical covariate definitions.

Variable	Values	Definitions	Timing
Age		Age in complete years	Current
Sex	Male/Female	As defined in files	Current
COVID Vaccine		Dose number, type	Date for each dose
COVID Vaccine			Time-of-day for each dose
Health-care worker	0/1	Is patient a health-care worker per File.	Current
Long-term care facility resident	0/1	Is patient a long-term care facility resident per file.	Current
Cancer	0/1	ICD9 Code 174* ICD9 Code 175* ICD9 Code 233.0 ICD9 Code V10.3 ICD9 Proc Code 85.4* ICD9 Code 153* ICD9 Code 154* ICD9 Code V10.5* ICD9 Code V10.6* ICD9 Code 185 ICD9 Code V10.46 ICD9 Code 162* ICD9 Code V10.1* ICD9 Code 188* ICD9 Code V10.51 ICD9 Code 183* ICD9 Code V10.43 ICD9 Code 179 ICD9 Code 182* ICD9 Code V10.42 ICD9 Code 157* ICD9 Code 191* ICD9 Code 192* ICD9 Code V10.85 ICD9 Code 151* ICD9 Code V10.04 ICD9 Code 172* ICD9 Code V10.82 ICD9 Code 201* ICD9 Code 200* ICD9 Code 202.4* ICD9 Code 204* ICD9 Code 205* ICD9 Code 206* ICD9 Code 207.1* ICD9 Code 208.1*	Last 5 years

		ICD9 Code 189* ICD9 Code V10.52 ICD9 Code 160* ICD9 Code 161* ICD9 Code 164.0 ICD9 Code 195.0 ICD9 Code V10.21 ICD9 Code V10.22 ICD9 Code 180* ICD9 Code V10.41 ICD9 Code 140* ICD9 Code 141* ICD9 Code 142* ICD9 Code 143* ICD9 Code 144* ICD9 Code 145* ICD9 Code 150* ICD9 Code V10.03 ICD9 Code 155* ICD9 Code 156* ICD9 Code V10.07 ICD9 Code 170* ICD9 Code V10.81 ICD9 Code 193 ICD9 Code V10.87 ICD9 Code 171* ICD9 Code 176* ICD9 Code 184* ICD9 Code 186* ICD9 Code 187* ICD9 Code V10.4* ICD9 Code 203* ICD9 Code 273.3 ICD9 Code 152* ICD9 Code 158* ICD9 Code 159* ICD9 Code 163* ICD9 Code 164* ICD9 Code 165* ICD9 Code 181 ICD9 Code 190* ICD9 Code 192.8 ICD9 Code 196* ICD9 Code 197* ICD9 Code 198* ICD9 Code 199*	
Chronic Kidney Disease	0/1	ICD Proc Code 39.95 ICD Proc Code 54.98 ICD9 Code 996.81	Ever

		ICD9 Code V42.0 ICD Proc Code 55.6* ICD9 Code 403._1 ICD9 Code 404._2 ICD9 Code 404._3 ICD9 Code 585* ICD9 Code 586 ICD9 Code 250.4* ICD9 Code 274.1* ICD9 Code 440.1 ICD9 Code 581* ICD9 Code 582* ICD9 Code 583* ICD9 Code 587 ICD9 Code 588* ICD9 Code 589*	
Chronic Obstructive Pulmonary Disease	0/1	ICD9 Code 491* ICD9 Code 492* ICD9 Code 496	Ever
Heart Conditions	0/1	ICD9 Code 410* ICD9 Code 411* ICD9 Code 412 ICD9 Code 413* ICD9 Code 414* ICD9 Code 429.2, 429.7* ICD9 Code V45.81, V45.82 ICD9 Proc Code 36.0* ICD9 Proc Code 36.1* ICD9 Code 428* ICD9 Code 398.91 ICD9 Code 402._1 ICD9 Code 404._1, ICD9 Code 404._3 ICD9 Code 416.9 ICD9 Code 514 ICD9 Code 425* ICD9 Code 416*	Ever
Solid Organ Transplant Recipient	0/1	ICD9 Code 996.81 ICD9 Code V42.0 ICD Proc Code 55.6* ICD9 Code V42.7 ICD Proc Code 50.5* ICD9 Code V42.1 ICD9 Code V43.2 ICD Proc Code 37.5 ICD9 Code V42.83 ICD Proc Code 52.8* ICD9 Code V42.6	Ever

		ICD Proc Code 33.5* ICD Proc Code 33.6	
Obesity	0/1	Body Mass Index (BMI) 30-40	Latest measurement in last 5 years not taken during pregnancy
Severe Obesity	0/1	Body Mass Index (BMI) 40+	Latest measurement in last 5 years not taken during Pregnancy
Pregnancy	0/1		Current
Sickle Cell Disease	0/1	ICD9 Code 282.6*	Ever
Smoking	0/1		Last recorded value
Type 2 Diabetes Mellitus	0/1	HbA1C > 6.5 ATC Codes A10[A,B] ICD9 Code 250* ICD9 Code 357.2 ICD9 Code 362.0* And not: ICD9 Code 250. 1, 250. 3	For diagnosis codes, ever For drugs, 4 or more dispensed in last 12 months
Asthma	0/1	ICD9 Code 493*	Ever
Cerebrovascular Disease	0/1	ICD9 Code 362.34 ICD9 Code 430 ICD9 Code 431 ICD9 Code 432* ICD9 Code 433* ICD9 Code 434* ICD9 Code 435* ICD9 Code 436* ICD9 Code 438*	Ever
Other Respiratory Disease	0/1	ICD9 Code 277.0* ICD9 Code 494* ICD9 Code 515	Ever
Hypertension	0/1	ICD9 Code 401* ICD9 Code 402* ICD9 Code 403* ICD9 Code 404* ICD9 Code 405*	Ever
Immunocompromised State	0/1	Any of: ICD9 Code 042* ICD9 Code 043* ICD9 Code 044* ICD9 Code 795.71 ICD9 Code V08 ICD9 Code V42.8* ICD9 Proc Code 41.0* Or at least 2 of:	For diagnosis codes, Ever For drugs, 4 or more dispensed in last 12 months

		ATC4 Code H02ABATC4 Code H02BXATC4 Code M01BA Or at least 2 of: ATC2 Code L04	
--	--	---	--

eTable 3: Results of Schoenfeld's Global test for proportional hazards assumption

Variable	Model includes all ages			Model includes individuals ≥60 years of age		
	Chisq	df	P	Chisq	df	p-Value
Sex	0.36	1	0.55	0.0000455	1	0.99
Age	1804.67	1	<0.001	-	-	-
Morning vs Evening	138.27	1	<0.001	10.2	1	0.001
Diabetes	515.29	1	<0.001	2.46	1	0.12
Obesity	396.19	1	<0.001	5.77	1	0.02
Chronic kidney disease	212.85	1	<0.001	0.87	1	0.35
Hypertension	1478.49	1	<0.001	0.98	1	0.32
Global test	2608.96	7	<0.001	17.3	6	0.01

eTable 4: Multivariate logistic regression model for association with COVID breakthrough infection post vaccine doses 1 and 2.

Variable	Odds Ratio	Confidence Interval (5%-95%)	p-Value
Third vaccine (booster)	0.80	0.79-0.82	<0.001
Male gender	0.81	0.80-0.82	<0.001
Evening doses	1.02	1.01-1.04	0.006
Diabetes Mellitus	0.97	0.93-1.00	0.07
Age > 60y	0.68	0.66-0.70	<0.001
Obesity	1.00	0.98-1.02	0.6
Chronic Kidney Disease	0.90	0.85-0.95	<0.001
Hypertension	1.02	0.99-1.05	0.14

eTable 5: Bootstrap multivariate analysis (2000 rounds) for the association with COVID infection post two vaccine doses.

Variable	Odds Ratio	Confidence Interval (5%-95%)
Third vaccine (booster)	0.28	0.27-0.30
Male gender	0.82	0.80-0.83
Evening doses	1.07	1.06-1.09
Diabetes Mellitus	0.96	0.92-0.99
Age > 60y	0.52	0.50-0.55
Obesity	0.91	0.90-0.93
Chronic Kidney Disease	0.90	0.86-0.95
Hypertension	0.95	0.92-0.97

eTable 6: Cox multivariate regression analysis of breakthrough infection after COVID-19 vaccination: morning vs. evening.

	Dose 1 and 2			Dose 3			Dose 4		
	HR	95% CI	p	HR	95% CI	p	HR	95% CI	p
Booster Dose^a									
-	—	—		—	—		—	—	
+	0.48	0.48-0.49	<0.001	0.44	0.42-0.45	<0.001	—	—	
Vaccination Timing									
8:00-11:59	0.93	0.92-0.94	<0.001	0.97	0.95-0.98	<0.001	0.97	0.93-1.02	0.3
16:00-19:59	—	—		—	—		—	—	—
Sex									
F	—	—		—	—		—	—	
M	0.83	0.82-0.84	<0.001	0.83	0.82-0.84	<0.001	1.13	1.08-1.19	<0.001
Age^e									
≤60	—	—		—	—		—	—	
>60	0.66	0.64-0.67	<0.001	0.68	0.67-0.70	<0.001	1.17	1.10-1.24	<0.001
Diabetes									
-	—	—		—	—		—	—	
+	0.92	0.89-0.96	<0.001	0.91	0.89-0.94	<0.001	0.89	0.84-0.94	<0.001
BMI^{b,e}									
<30	—	—		—	—		—	—	
≥30	0.91	0.90-0.93	<0.001	0.94	0.93-0.95	<0.001	0.95	0.90-1.00	0.052
CKD^c									
-	—	—		—	—		—	—	
+	0.9	0.86-0.95	<0.001	0.91	0.88-0.94	<0.001	0.84	0.78-0.89	<0.001
HTN^d									
-	—	—		—	—		—	—	
+	0.93	0.91-0.96	<0.001	0.93	0.91-0.95	<0.001	0.93	0.88-0.98	0.004

^aModels the effect one additional booster dose beyond the number of vaccinations specified.

^bBMI, body mass index; ^cCKD, chronic kidney disease; ^dHTN, hypertension. ^eModeling BMI and age as continuous variables yielded similar trends (data not shown).

eTable 7: Cox multivariate regression analysis of breakthrough infection after COVID-19 vaccination: morning vs. afternoon administration.

	Dose 1 and 2			Dose 3			Dose 4		
	HR	95% CI	p	HR	95% CI	p	HR	95% CI	p
Booster Dose^a									
-	—	—		—	—		—	—	
+	0.51	0.50-0.52	<0.001	0.43	0.42-0.44	<0.001	—	—	
Vaccination Timing									
8:00-11:59	—	—		—	—		—	—	
12:00-15:59	0.96	0.95-0.98	<0.001	0.96	0.95-0.97	<0.001	0.95	0.91-1	0.04
Sex									
F	—	—		—	—		—	—	
M	0.82	0.81-0.84	<0.001	0.83	0.82-0.84	<0.001	1.12	1.07-1.18	<0.001
Age									
≤60	—	—		—	—		—	—	
>60	0.66	0.64-0.67	<0.001	0.68	0.67-0.69	<0.001	1.05	0.98-1.13	0.13
Diabetes									
-	—	—		—	—		—	—	
+	0.91	0.88-0.94	<0.001	0.9	0.88-0.93	<0.001	0.93	0.88-0.99	0.015
BMI^{b,e}									
<30	—	—		—	—		—	—	
≥30	0.94	0.93-0.96	<0.001	0.95	0.94-0.97	<0.001	0.9	0.85-0.95	<0.001
CKD^c									
-	—	—		—	—		—	—	
+	0.92	0.88-0.97	<0.001	0.9	0.87-0.93	<0.001	0.83	0.78-0.89	<0.001
HTN^d									
-	—	—		—	—		—	—	
+	0.92	0.9-0.95	<0.001	0.93	0.91-0.94	<0.001	0.93	0.89-0.98	0.007

^aModels the effect one additional booster dose beyond the number of vaccinations specified.

^bBMI, body mass index; ^cCKD, chronic kidney disease; ^dHTN, hypertension. ^eModeling BMI and age as continuous variables yielded similar trends (data not shown).

eTable 8: Cox multivariate regression analysis of breakthrough infection after COVID-19 vaccination: afternoon vs. evening administration.

	Dose 1 and 2			Dose 3			Dose 4		
	HR	95% CI	p	HR	95% CI	p	HR	95% CI	p
Booster Dose^a									
-	—	—		—	—		—	—	
+	0.49	0.48-0.49	<0.001	0.43	0.42-0.45	<0.001	—	—	
Vaccination Timing									
12:00-15:59	0.88	0.87-0.90	<0.001	0.93	0.91-0.94	<0.001	0.93	0.88-0.97	0.003
16:00-19:59	—	—		—	—		—	—	
Sex									
F	—	—		—	—		—	—	
M	0.8	0.79-0.82	<0.001	0.83	0.82-0.84	<0.001	1.1	1.05-1.15	<0.001
Age^e									
≤60	—	—		—	—		—	—	
>60	0.68	0.66-0.7	<0.001	0.69	0.67-0.70	<0.001	1.1	1.03-1.17	0.003
Diabetes									
-	—	—		—	—		—	—	
+	0.94	0.9-0.98	0.002	0.93	0.92-0.95	<0.001	0.92	0.87-0.97	0.003
BMI^{b,e}									
<30	—	—		—	—		—	—	
≥30	0.9	0.89-0.92	<0.001	0.93	0.92-0.95	<0.001	0.95	0.90-1.00	0.052
CKD³									
-	—	—		—	—		—	—	
+	0.94	0.89-0.99	<0.001	0.89	0.86-0.93	<0.001	0.83	0.78-0.89	<0.001
HTN^d									
-	—	—		—	—		—	—	
+	0.94	0.91-0.97	<0.001	0.95	0.93-0.97	<0.001	0.94	0.89-0.99	0.013

^aModels the effect one additional booster dose beyond the number of vaccinations specified.

^bBMI, body mass index; ^cCKD, chronic kidney disease; ^dHTN, hypertension. ^eModeling BMI and age as continuous variables yielded similar trends (data not shown).

eTable 9: Cox multivariate regression analysis of emergency department (ED) visits after COVID-19 vaccination.

	Dose 1 and 2 ^a			Dose 3		
	HR	95% CI	p	HR	95% CI	p
Booster Dose^b						
-	—	—		—	—	
+	0.26	0.22-0.30	<0.001	0.33	0.27-0.41	<0.001
Vaccination Timing						
8:00-11:59	0.99	0.83-1.13	>0.9	1.04	0.92-1.17	0.5
16:00-19:59	—	—		—	—	—
Age^f						
≤60	—	—		—	—	
>60	2.88	2.37-3.50	<0.001	1.99	1.64-2.42	<0.001
BMI^{c,f}						
≥30	—	—		—	—	
<30	1.23	1.04-1.45	0.014	1.01	0.86-1.20	0.9
Diabetes						
-	—	—		—	—	
+	1.5	1.22-1.86	<0.001	1.51	1.24-1.85	<0.001
HTN^d						
-	—	—		—	—	
+	1.23	1.00-1.52	0.046	1.36	1.11-1.65	0.002
CKD^e						
-	—	—		—	—	
+	2.63	2.09-3.30	<0.001	2.63	2.11-3.27	<0.001
Immuno-suppression						
-	—	—		—	—	
+	4.77	3.83-5.94	<0.001	5.21	4.25-6.40	<0.001

^aBoth doses were administered within the indicated time frame. ^bModels the effect one additional booster dose beyond the number of vaccinations specified. ^cBody Mass Index. ^dHypertension. ^eChronic kidney disease. ^fModeling BMI and age as continuous variables yielded similar trends (data not shown).

eTable 10: Patient demographic breakdown for periodicity analysis of breakthrough infections (Fig. 3)

Time Bin	Doses 1 and 2			Dose 3			Dose 4		
	Mean Age (SD)	Male (%)	≥ 4 Comorbidities	Mean Age (SD)	Male (%)	≥ 4 Comorbidities	Mean Age (SD)	Male (%)	≥ 4 Comorbidities
8:00-9:59	42.1 (17.3)	49.0%	1.0%	47.3 (17.8)	47.9%	1.8%	68.3 (11.2)	52.5%	5.7%
10:00-11:59	40.9 (18.5)	46.8%	1.3%	46.4 (18.6)	46.9%	1.9%	69.8 (11.1)	49.1%	6.4%
11:00-12:59	40.4 (18.3)	47.3%	1.2%	46.3 (18.6)	47.4%	1.8%	70.3 (10.8)	48.6%	6.4%
12:00-13:59	40.0 (18.1)	47.1%	1.1%	47.0 (18.7)	47.8%	1.9%	70.6 (10.4)	48.6%	6.4%
13:00-14:59	38.4 (18)	46.7%	0.9%	47.2 (18.9)	48.1%	1.9%	69.7 (11.2)	48.7%	6.2%
14:00-15:59	37.2 (18.1)	46.4%	0.8%	46.2 (19.2)	47.8%	1.9%	68.5 (11.9)	49.7%	5.9%
15:00-16:59	36.3 (18.2)	45.7%	0.7%	44.7 (19.4)	47.0%	1.7%	67.1 (12.3)	50.6%	5.6%
16:00-17:59	35.6 (17.9)	46.4%	0.7%	43.8 (19.3)	47.6%	1.5%	65.6 (12.6)	51.9%	5.2%
17:00-18:59	36.5 (17.3)	48.6%	0.6%	43.5 (19.0)	49.1%	1.4%	65.0 (12.3)	54.4%	4.8%
18:00-19:59	38.2 (16)	50.0%	0.5%	43.9 (18.7)	50.3%	1.4%	65.7 (11.4)	55.7%	4.8%
19:00-20:59	38.7 (15.5)	50.2%	0.5%	45.0 (18.1)	50.8%	1.3%	67.3 (10.2)	55.3%	5.3%
20:00-20:59	37.6 (15.1)	49.3%	0.3%	45.5 (17.4)	51.9%	1.3%	68.4 (9.1)	55.6%	6.0%

eTable 11: Breakthrough COVID-19 infection hazard ratio (HR) comparing AM (8:00-9:59) vaccination to the indicated times. Ratios >1 indicate fewer infections associated with the AM reference time. For graphical representation of these data see Figure 3A-C.

Time Bin	Dose 1 and 2			Dose 3			Dose 4		
	HR	95% CI	n	HR	95% CI	n	HR	95% CI	n
08:00-09:59	1.00		98787	1.00		186932	1.00		29870
10:00-11:59	0.93	0.91-0.95	83523	0.98	0.96-0.99	204203	0.99	0.92-1.05	35345
11:00-12:59	0.92	0.90-0.94	75240	0.97	0.96-0.99	191679	0.96	0.89-1.02	32442
12:00-13:59	0.91	0.88-0.93	65926	0.94	0.93-0.96	181319	0.96	0.89-1.02	32471
13:00-14:59	0.94	0.92-0.96	65274	0.93	0.92-0.95	173612	0.90	0.84-0.96	36958
14:00-15:59	0.96	0.93-0.98	71112	0.96	0.95-0.98	170538	0.90	0.84-0.96	42222
15:00-16:59	1.01	0.98-1.03	80343	1.00	0.98-1.01	186127	0.94	0.89-1.01	47780
16:00-17:59	1.07	1.04-1.09	90676	1.02	1.00-1.03	206931	0.99	0.93-1.06	47576
17:00-18:59	1.06	1.03-1.08	85023	1.02	1.01-1.04	179406	1.04	0.98-1.11	35991
18:00-19:59	0.99	0.97-1.01	64325	1.03	1.01-1.05	114029	1.08	1.00-1.17	18538
19:00-20:59	0.96	0.93-0.99	29769	1.02	0.99-1.04	54557	1.16	1.05-1.29	6138
20:00-21:59	0.87	0.82-0.93	5887	1.01	0.97-1.05	16326	1.16	0.95-1.42	1458

eTable 12: COVID-19 associated ED visit hazard ratio (HR) comparing AM (8:00-9:59) vaccination to the indicated times. Ratios >1 indicate fewer infections associated with the AM reference time. For graphical representation of these data see Figure 3D.

Time Bin	Dose 1 and 2			Dose 3		
	HR	95% CI	n	HR	95% CI	n
08:00-09:59	1.00		98787	1.00		186932
10:00-11:59	0.84	0.67-1.05	83523	0.88	0.73-1.05	204203
11:00-12:59	0.98	0.78-1.22	75240	0.90	0.75-1.08	191679
12:00-13:59	1.09	0.87-1.37	65926	0.88	0.73-1.07	181319
13:00-14:59	0.94	0.73-1.20	65274	0.82	0.68-1.00	173612
14:00-15:59	0.97	0.76-1.23	71112	0.79	0.64-0.96	170538
15:00-16:59	0.95	0.75-1.20	80343	0.95	0.79-1.15	186127
16:00-17:59	1.00	0.80-1.26	90676	0.89	0.74-1.07	206931
17:00-18:59	1.04	0.83-1.31	85023	0.80	0.66-0.98	179406
18:00-19:59	1.04	0.81-1.33	64325	0.91	0.73-1.14	114029
19:00-20:59	0.95	0.67-1.33	29769	1.10	0.84-1.44	54557
20:00-21:59	0.46	0.17-1.23	5887	1.28	0.84-1.95	16326

eTable 13: METACYCLE output for data presented in Figures 3 and 4.

COVID Vaccination Number	Age Range	Outcome	meta2d pvalue	meta2d BH.Q	meta2d period	meta2d phase	meta2d Base	meta2d AMP	meta2d rAMP
Dose 1/2	All	Breakthrough Infection	0.001	0.004	14.018	12.525	0.948	0.062	0.062
	12-30 Years	Breakthrough Infection	0.003	0.006	13.325	0.120	0.915	0.096	0.096
	30-60 Years	Breakthrough Infection	0.006	0.010	14.650	12.324	0.951	0.028	0.028
	>60 Years	Breakthrough Infection	0.124	0.151	16.388	11.111	0.963	0.034	0.034
	All	ED Visit	0.153	0.153	11.466	5.402	0.928	0.105	0.105
Dose 3	All	Breakthrough Infection	0.003	0.006	14.823	11.964	0.993	0.017	0.017
	12-30 Years	Breakthrough Infection	<0.001	0.003	15.157	12.184	1.009	0.006	0.006
	30-60 Years	Breakthrough Infection	0.020	0.028	13.554	13.532	0.966	0.011	0.011
	>60 Years	Breakthrough Infection	0.006	0.010	16.747	13.022	1.048	0.062	0.060
	All	ED Visit	0.152	0.153	14.055	10.113	0.928	0.022	0.022
Dose 4	All	Breakthrough Infection	<0.001	<0.001	16.077	13.563	1.049	0.105	0.100

eTable 14: Breakthrough COVID-19 infection hazard ratio (HR) as a function of age bracket, comparing AM (8:00-11:59) to PM (16:00-19:59) vaccination times. Ratios >1 indicate fewer infections associated with the AM reference time. For graphical representation of these data see Figure 4A.

Age Bin [Years]	Dose 1 and 2			Dose 3		
	HR	95% CI	Total n	HR	95% CI	Total n
12-30	1.07	1.04-1.09	156845	1.10	1.08-1.13	175070
30-60	1.03	1.01-1.05	246832	0.98	0.96-0.99	368111
>60	1.12	1.07-1.18	60370	1.07	1.03-1.10	168860

eTable 15: Breakthrough COVID-19 infection hazard ratio (HR) in patients 12-30 years old, comparing AM (8:00-9:59) vaccination to the indicated times. Ratios >1 indicate fewer infections associated with the AM reference time. For graphical representation of these data see Figure 4B.

Time Bin	Dose 1 and 2			Dose 3		
	HR	95% CI	n	HR	95% CI	n
08:00-09:59	1.00		25502	1.00		35445
10:00-11:59	0.94	0.90-0.97	27084	0.97	0.93-1.00	47677
11:00-12:59	0.90	0.87-0.94	25632	0.96	0.93-0.99	45992
12:00-13:59	0.88	0.85-0.92	22992	0.92	0.89-0.96	41710
13:00-14:59	0.90	0.86-0.93	24923	0.92	0.89-0.96	39803
14:00-15:59	0.90	0.86-0.94	29103	0.98	0.95-1.01	42315
15:00-16:59	0.98	0.94-1.02	34537	1.04	1.00-1.07	51461
16:00-17:59	1.08	1.05-1.13	39777	1.07	1.04-1.11	59998
17:00-18:59	1.05	1.01-1.09	34995	1.09	1.05-1.13	52446
18:00-19:59	0.94	0.91-0.98	23416	1.10	1.06-1.14	31950
19:00-20:59	0.88	0.83-0.92	10075	1.06	1.01-1.11	13738
20:00-21:59	0.80	0.73-0.89	2107	1.00	0.93-1.09	3810

eTable 16: Breakthrough COVID-19 infection hazard ratio (HR) in patients 30-60 years old, comparing AM (8:00-9:59) vaccination to the indicated times. Ratios >1 indicate fewer infections associated with the AM reference time. For graphical representation of these data see Figure 4C.

Time Bin	Dose 1 and 2			Dose 3		
	HR	95% CI	n	HR	95% CI	n
08:00-09:59	1.00		58496	1.00		103783
10:00-11:59	0.93	0.91-0.96	42817	0.99	0.97-1.01	105491
11:00-12:59	0.92	0.90-0.95	38015	0.97	0.95-0.99	98468
12:00-13:59	0.91	0.88-0.94	33272	0.95	0.93-0.97	92407
13:00-14:59	0.94	0.91-0.97	31863	0.93	0.91-0.95	86538
14:00-15:59	0.95	0.93-0.98	33655	0.95	0.93-0.97	83818
15:00-16:59	0.98	0.95-1.01	37148	0.96	0.94-0.98	90551
16:00-17:59	1.00	0.97-1.03	42052	0.97	0.95-0.99	101528
17:00-18:59	1.01	0.98-1.04	41927	0.97	0.95-0.99	88891
18:00-19:59	0.99	0.96-1.02	34695	0.98	0.95-1.00	57329
19:00-20:59	1.00	0.96-1.04	17022	0.97	0.94-1.00	28452
20:00-21:59	0.91	0.84-0.98	3346	0.97	0.92-1.02	8778

eTable 17: Breakthrough COVID-19 infection hazard ratio (HR) in patients >60 years old, comparing AM (8:00-9:59) vaccination to the indicated times. Ratios >1 indicate fewer infections associated with the AM reference time. For graphical representation of these data see Figure 4C.

Time Bin	Dose 1 and 2			Dose 3		
	HR	95% CI	n	HR	95% CI	n
08:00-09:59	1.00		14789	1.00		47704
10:00-11:59	0.84	0.78-0.90	13622	0.97	0.93-1.01	51035
11:00-12:59	0.89	0.83-0.96	11593	0.99	0.95-1.03	47219
12:00-13:59	0.91	0.85-0.98	9662	0.96	0.92-1.00	47202
13:00-14:59	0.94	0.86-1.01	8488	0.94	0.90-0.98	47271
14:00-15:59	1.00	0.92-1.08	8354	0.97	0.93-1.01	44405
15:00-16:59	0.95	0.88-1.03	8658	1.01	0.97-1.05	44115
16:00-17:59	0.97	0.90-1.05	8847	1.04	1.00-1.09	45405
17:00-18:59	1.07	0.99-1.16	8101	1.05	1.01-1.10	38069
18:00-19:59	1.07	0.99-1.16	6214	1.06	1.01-1.12	24750
19:00-20:59	1.03	0.92-1.16	2672	1.09	1.02-1.16	12367
20:00-21:59	0.98	0.75-1.28	434	1.19	1.08-1.32	3738

eTable 18: Distribution of COVID-19 tests in the study population. See eFigure 2 for a graphical presentation of these data.

Hour Bin	Total Tests		Positive Tests		Positivity Rate	
	PM ^a	AM ^a	PM	AM	PM	AM
0	18301	27141	509	779	0.028	0.029
1	6218	8880	52	92	0.008	0.010
2	5496	7990	33	52	0.006	0.007
3	6212	8998	48	63	0.008	0.007
4	3776	5464	50	75	0.013	0.014
5	1951	2553	42	58	0.022	0.023
6	9333	13285	55	101	0.006	0.008
7	7562	11183	255	337	0.034	0.030
8	23481	35000	1970	2552	0.084	0.073
9	36674	55411	3518	4766	0.096	0.086
10	41152	61818	4267	5804	0.104	0.094
11	42229	60857	4240	5895	0.100	0.097
12	46097	64411	4879	6246	0.106	0.097
13	39846	52965	3982	5017	0.100	0.095
14	35845	45797	3448	4197	0.096	0.092
15	34279	42387	2993	3469	0.087	0.082
16	35709	40957	2903	3145	0.081	0.077
17	38150	41949	2894	2900	0.076	0.069
18	32168	34999	2632	2691	0.082	0.077
19	25905	28451	2260	2274	0.087	0.080
20	19160	23005	1405	1488	0.073	0.065
21	15003	18950	945	1036	0.063	0.055
22	9372	12952	291	322	0.031	0.025
23	8142	11692	99	136	0.012	0.012

^aAM:8:00-11:59; PM:16:00-19:59

REFERENCES

1. Hammerman A, Sergienko R, Friger M, et al. Effectiveness of the BNT162b2 Vaccine after Recovery from Covid-19. *New England Journal of Medicine*. 2022;386(13):1221-1229.
2. Arbel R, Hammerman A, Sergienko R, et al. BNT162b2 Vaccine Booster and Mortality Due to Covid-19. *The New England journal of medicine*. 2021;385(26):2413-2420.
3. Dagan N, Barda N, Kepten E, et al. BNT162b2 mRNA Covid-19 Vaccine in a Nationwide Mass Vaccination Setting. *The New England journal of medicine*. 2021;384(15):1412-1423.
4. Stensrud MJ, Hernan MA. Why Test for Proportional Hazards? *JAMA*. 2020;323(14):1401-1402.
5. PATRICIA M, GRAMBSCH, TERRY M, THERNEAU. 'Proportional hazards tests and diagnostics based on weighted residuals'. *Biometrika*. 1995;82(3):668-668.