

# Supporting material

Optimizing Prescribing in Older Adults with Multimorbidity and Polypharmacy in Primary Care: A Cluster Randomized Clinical Trial (OPTICA Trial)

## Table of content

Appendix 1. Details on the assessment of the Medication Appropriateness Index (MAI).....	2
Appendix 2. Multiple imputation. ....	2
Appendix 3. Deviations from the Statistical Analysis Plan (SAP).....	2
Appendix 4. Deviations from the Statistical Analysis Plan (SAP).....	3
eFigure 1. Screening and recruitment flow chart of general practitioners and patients in the OPTICA trial, a cluster-randomized controlled trial in Swiss primary care settings. ....	4
eTable 1. Availability of the information on the Medication Appropriateness Index (MAI) and the Assessment of Underutilization (AOU) .....	4
eTable 2. Improvement of the primary outcomes: Medication Appropriateness Index (MAI) and Assessment of Underutilization (AOU) .....	5
eTable 3. Descriptive primary outcomes. ....	5
eFigure 2. Development of medication appropriateness over time: Means and 95%-confidence intervals for the total Medication Appropriateness Index Score (MAI) score by study timepoint.....	6
eFigure 3. Development of prescribing omissions over time: Means and 95%-confidence intervals for the total number of prescribing omissions as measured by the Assessment of Underutilization (AOU) by study timepoint.....	6
eFigure 4. Primary outcomes by timepoint. ....	7
eTable 4. Adjusted primary outcome models .....	8
eFigure 5. Subgroup analyses for the primary outcomes .....	8
eTable 5. Aggregated data analysis.....	9
eTable 6. Available case analysis: Primary and secondary outcomes.....	9
eTable 7. Per-protocol set of participants.....	11
eTable 8. Per-protocol analyses: Primary outcomes .....	11
eTable 9. Secondary outcomes: Per-protocol analysis.....	11
eTable 10. Additional secondary outcomes: Comparison between the intervention and control group.....	13
eTable 11. Descriptive secondary outcomes.....	13

## **Appendix 1. Details on the assessment of the Medication Appropriateness Index (MAI).**

We assessed the AOU for each non-acute condition of the patients and the MAI for each long-term medication ( $\geq 90$  days, no stop date; “as needed” medications were excluded). In this trial, we used the 10-item version of the MAI, however, we excluded the cost-effectiveness item for feasibility reasons. Using data on medications, diagnoses, and lab values the assessors rated the nine remaining criteria of the MAI for each medication using a three-point scale ranging from A=appropriate, B=marginally appropriate, to C=inappropriate. Each of the nine criteria has a weight of 1-3.<sup>1</sup> Each “inappropriate” rating received the respective weight, while each “marginally appropriate” and “appropriate” rating was weighted with 0. This resulted in a score from 0 to 17 for each medication.

## **Appendix 2. Multiple imputation.**

We used multiple imputation by chained equations to impute missing values in primary outcomes (MAI score and AOU index) at baseline, 6 and 12 months. Imputation models were based on all baseline characteristics of the patients and some GPs characteristics (**see below**). All these imputed variables were used to impute all the secondary outcomes at 6 and 12 months. Predictive mean matching (pmm) and logit models were used to impute ordinal and binary variables, respectively. In total, fifty imputed data sets were generated, which were analyzed as described above using Rubin’s rules to combine results across data sets.<sup>2</sup>

*Variables included in the multiple imputation model:*

**GP-level variables:** randomization group, practice form, practice size, canton of the GP practice, GPs’ work experience in years, and practice location

**Patient-level variables:** age, sex, education level, smoking status, alcohol consumption, permanent nursing home stay, number of falls, number of hospitalizations, number of chronic medications, number of chronic conditions, quality of life predicted utilities at baseline, EQ-5D visual analogue scale, and patients’ willingness to have medications deprescribed.

## **Appendix 3. Deviations from the Statistical Analysis Plan (SAP)**

Rather than using a random effects Poisson model for secondary count outcomes, we used a robust GEE model with a negative binomial distribution and a log link. The Poisson distribution is a special case of the negative binomial distribution and is too restrictive in this case, due to

overdispersion. Furthermore, the GEE approach is more consistent with the other analyses than the random effects model.

Secondary continuous outcomes (MAI score, AOU index) were considered as count data and were analyzed using a GEE model with a negative binomial distribution and a log link due to their skewed distribution. Since the MAI score only consists of integers with a high proportion of zeros, its distribution cannot be considered as Gaussian.

We did not run the subgroup analysis related to medication adherence, since the data on medication adherence had not been collected at baseline but at the 12-month follow-up.

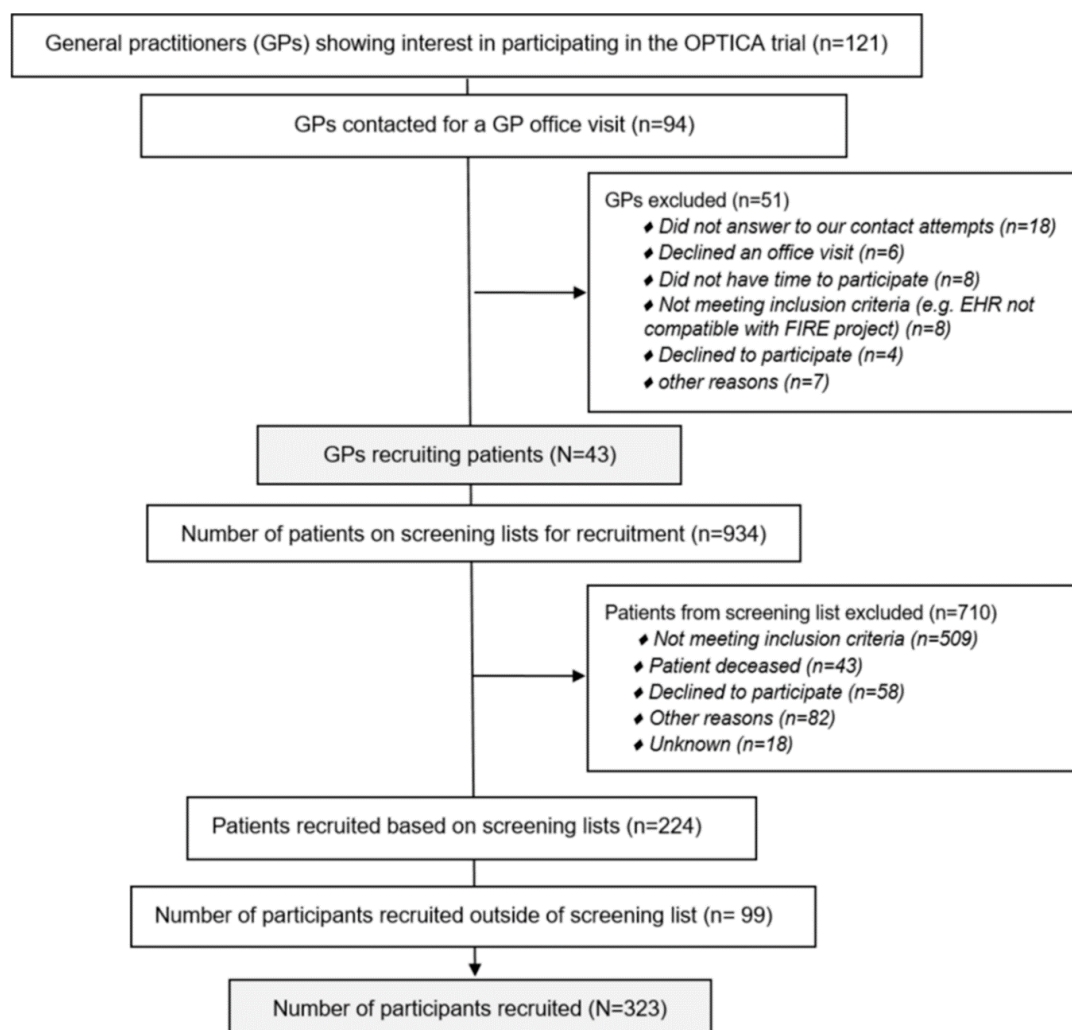
The rest of the analysis is consistent with the principal features of the statistical methods described in the statistical analysis plan (SAP).

#### **Appendix 4. Deviations from the Statistical Analysis Plan (SAP)**

At the GP level, the following subgroup analyses were performed: age in years (<median, ≥median), experience in years (<median, ≥median), practice size (single vs. group practice), and sex (male vs. female).

At the patient level, we performed the following subgroup analyses: number of medications (<10, ≥10), sex (male vs. female), living conditions (nursing home vs. community dwelling), age in years (65-74, 75-84, ≥85), number of chronic conditions (<median, ≥median), and willingness to deprescribe (question from rPATD 'If my doctor said it was possible, I would be willing to stop one or more of my regular medicines' – dichotomized by strongly agree/agree vs. unsure, disagree/strongly disagree).

**eFigure 1. Screening and recruitment flow chart of general practitioners and patients in the OPTICA trial, a cluster-randomized controlled trial in Swiss primary care settings.**



Abbreviation: OPTICA = Optimizing Pharmacotherapy in older multimorbid adults In primary CAre. | Source: Jungo KT, Meier R, Valeri F, Schwab N, Schneider C, Reeve E, Spruit M, Schwenkglens M, Rodondi N, Streit S. Baseline characteristics and comparability of older multimorbid patients with polypharmacy and general practitioners participating in a randomized controlled primary care trial. *BMC Fam Pract.* 2021 Jun 22;22(1):123. doi: 10.1186/s12875-021-01488-8. PMID: 34157981; PMCID: PMC8220761.

**eTable 1. Availability of the information on the Medication Appropriateness Index (MAI) and the Assessment of Underutilization (AOU)**

	All participants (n = 323)	Control group (n=163)	Intervention group (n=160)
<b>AOU availability<sup>1</sup></b>			
Baseline and 12-month follow-up	265 (82%)	133 (82%)	132 (82%)
Only baseline	27 (8.4%)	14 (8.6%)	13 (8.1%)
Only 12-month follow-up	6 (1.9%)	5 (3.1%)	1 (0.6%)
Baseline and 12-month follow-up not available	25 (7.7%)	11 (6.7%)	14 (8.7%)
<b>MAI availability<sup>2</sup></b>			
Baseline and 12-month follow-up	282 (87%)	143 (88%)	139 (87%)

Only baseline	19 (5.9%)	9 (5.5%)	10 (6.3%)
Only 12-month follow-up	4 (1.2%)	3 (1.8%)	1 (0.6%)
Only 6-month follow-up available	14 (4.3%)	5 (3.1%)	9 (5.6%)
Baseline and 12-month follow-up not available	4 (1.2%)	3 (1.8%)	1 (0.6%)

This table is based on the raw data. | <sup>1</sup>The AOU was assessed for each chronic condition at the different timepoints. Based on Jeffery et al. Consult Pharm. 1999. | <sup>2</sup>The MAI was evaluated for each chronic medication at the different timepoints. Adapted from Samsa, Hanlon, et al. Journal of clinical epidemiology. 1994.

**eTable 2. Improvement of the primary outcomes: Medication Appropriateness Index (MAI) and Assessment of Underutilization (AOU)**

	All participants (n = 323)	Control group (n=163)	Intervention group (n=160)
<b>Improvement in MAI</b>			
No	163 (50%)	86 (53%)	77 (48%)
Yes	119 (37%)	57 (35%)	62 (39%)
Missing	41 (13%)	20 (12%)	21 (13%)
<b>Improvement in AOU</b>			
No	227 (70%)	111 (68%)	116 (73%)
Yes	38 (12%)	22 (13%)	16 (10%)
Missing	58 (18%)	30 (18%)	28 (18%)

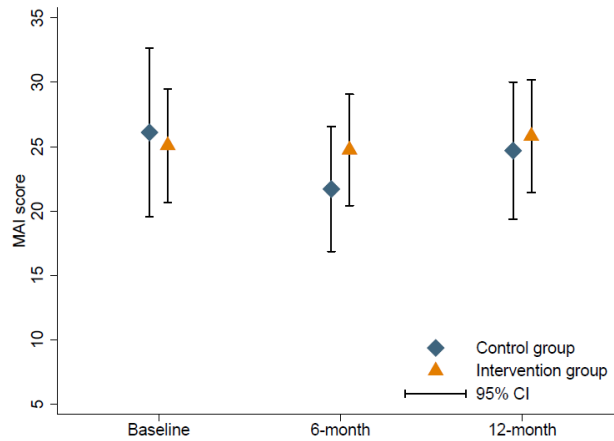
This table is based on the raw data.

**eTable 3. Descriptive primary outcomes.**

	Control group (n = 163)		Intervention group (n = 160)	
	Missing n (%)	median [LQ, UQ]; mean (SD) or n (%)	Missing n (%)	median [LQ, UQ]; mean (SD) or n (%)
<b>Medication Appropriateness Index</b>				
MAI score total (baseline)	11 (7%)	5.0 [0.00, 38]; 27 (43)	11 (7%)	15 [4.0, 38]; 26 (28)
MAI score total (6-month follow-up)	20 (12%)	7.0 [0.00, 36]; 22 (31)	20 (13%)	14 [3.0, 38]; 25 (27)
MAI score total (12-month follow-up)	14 (9%)	8.0 [0.00, 36]; 24 (33)	19 (12%)	15 [3.0, 38]; 26 (26)
MAI improvement between baseline and 12-month follow-up	20 (12%)		21 (13%)	
no		86 (53%)		77 (48%)
yes		57 (35%)		62 (39%)
<b>Assessment of underutilization</b>				
Number of prescribing omissions (baseline)	16 (10%)	1.0 [0.0, 2.0]; 1.2 (1.2)	15 (9%)	1.0 [0.0, 1.0]; 0.99 (1.3)
Number of prescribing omissions (6-month follow-up)	30 (18%)	1.0 [0.0, 2.0]; 1.1 (1.2)	25 (16%)	1.0 [0.0, 2.0]; 1.0 (1.2)
Number of prescribing omissions (12-month follow-up)	25 (15%)	1.0 [0.0, 2.0]; 1.2 (1.1)	27 (17%)	1.0 [0.0, 1.0]; 0.87 (1.1)
Improvement in the AOU between baseline and 12-month follow-up	30 (18%)		28 (18%)	
no		111 (68%)		116 (73%)
yes		22 (13%)		16 (10%)

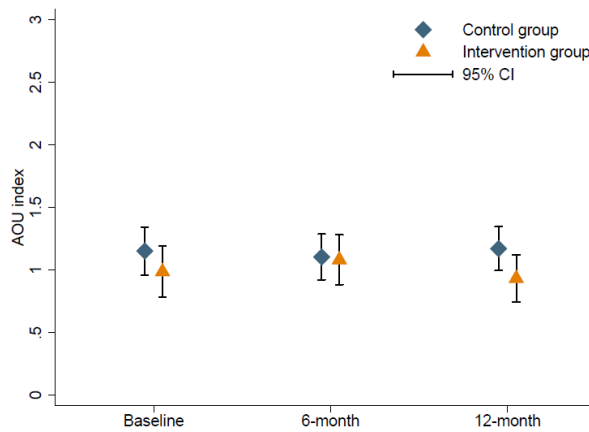
Acronyms: LQ=lower quartile, UQ=upper quartile, SD=standard deviation, MAI=Medication Appropriateness Index, AOU=Assessment of underutilization. | This table is based on the raw data.

**eFigure 2. Development of medication appropriateness over time: Means and 95%-confidence intervals for the total Medication Appropriateness Index Score (MAI) score by study timepoint**



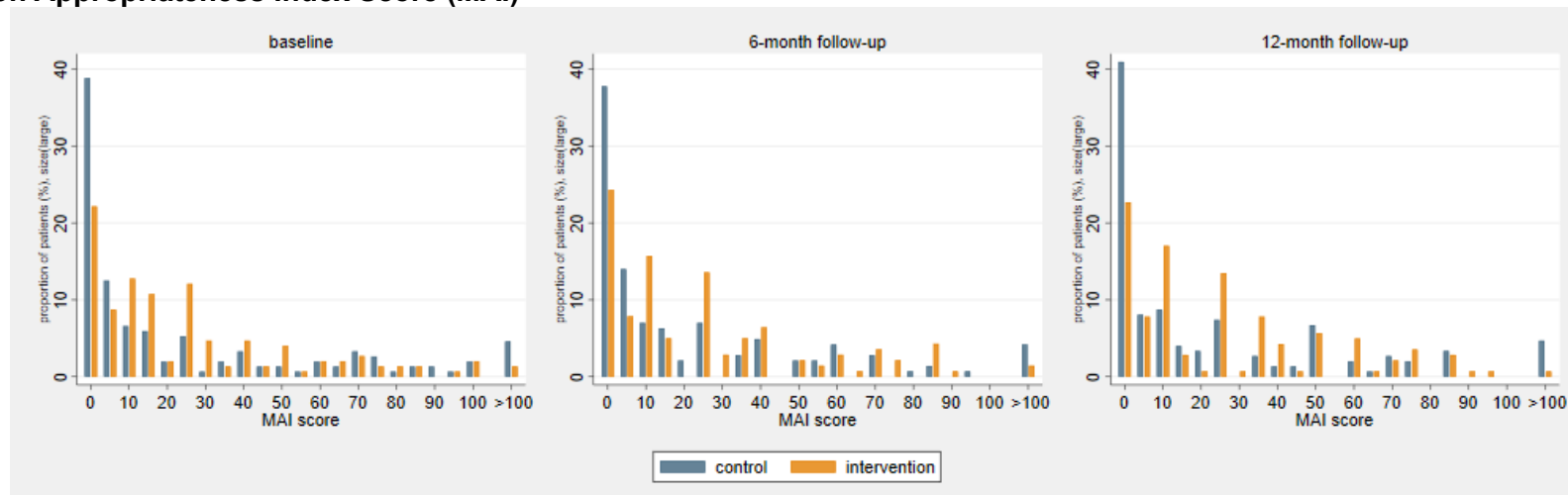
The numbers in this figure were calculated using multiple imputed data.

**eFigure 3. Development of prescribing omissions over time: Means and 95%-confidence intervals for the total number of prescribing omissions as measured by the Assessment of Underutilization (AOU) by study timepoint**

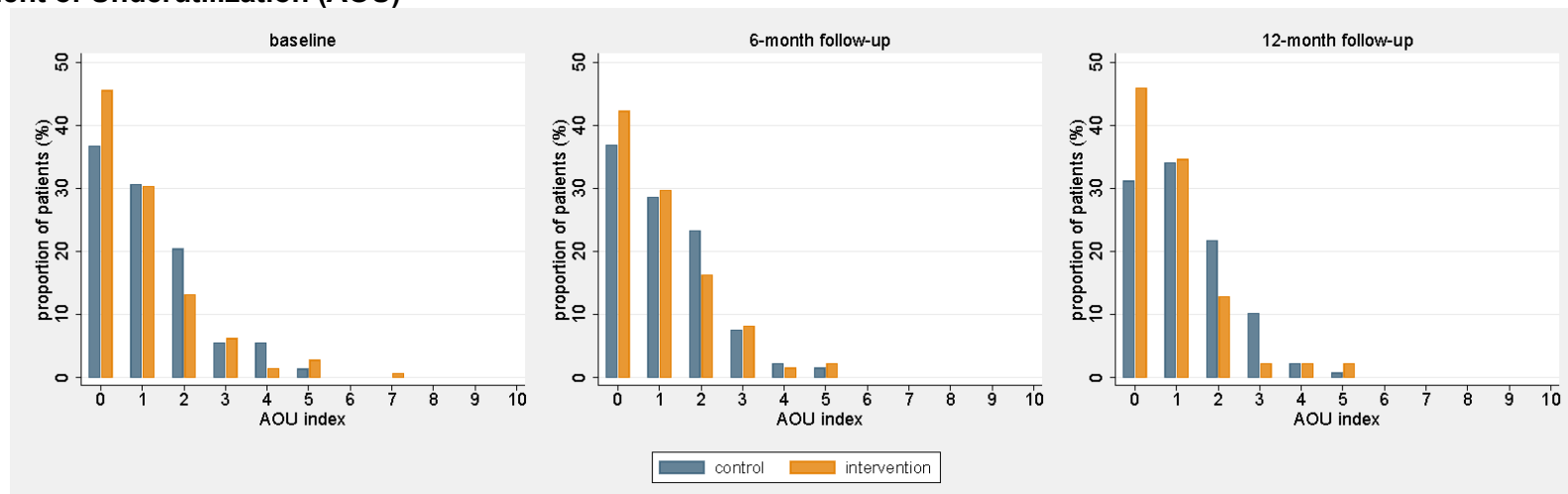


The numbers in this figure were calculated using multiple imputed data.

**eFigure 4. Primary outcomes by timepoint.**  
**Medication Appropriateness Index Score (MAI)**



**Assessment of Underutilization (AOU)**



## eTable 4. Adjusted primary outcome models

### 4a. Adjusted for baseline characteristics

	Control (n=163)	Intervention (n=160)	OR (95% CI)	p-value
	n (%)			
Improvement in the MAI score between baseline and 12-month follow-up	57 (40%)	62 (45%)	1.01 (0.58 to 1.75)	0.971
Improvement in the AOU between baseline and 12-month follow-up	22 (17%)	16 (12%)	1.07 (0.43 to 2.64)	0.881

### 4b. Adjusted for all subgroup variables<sup>1</sup>

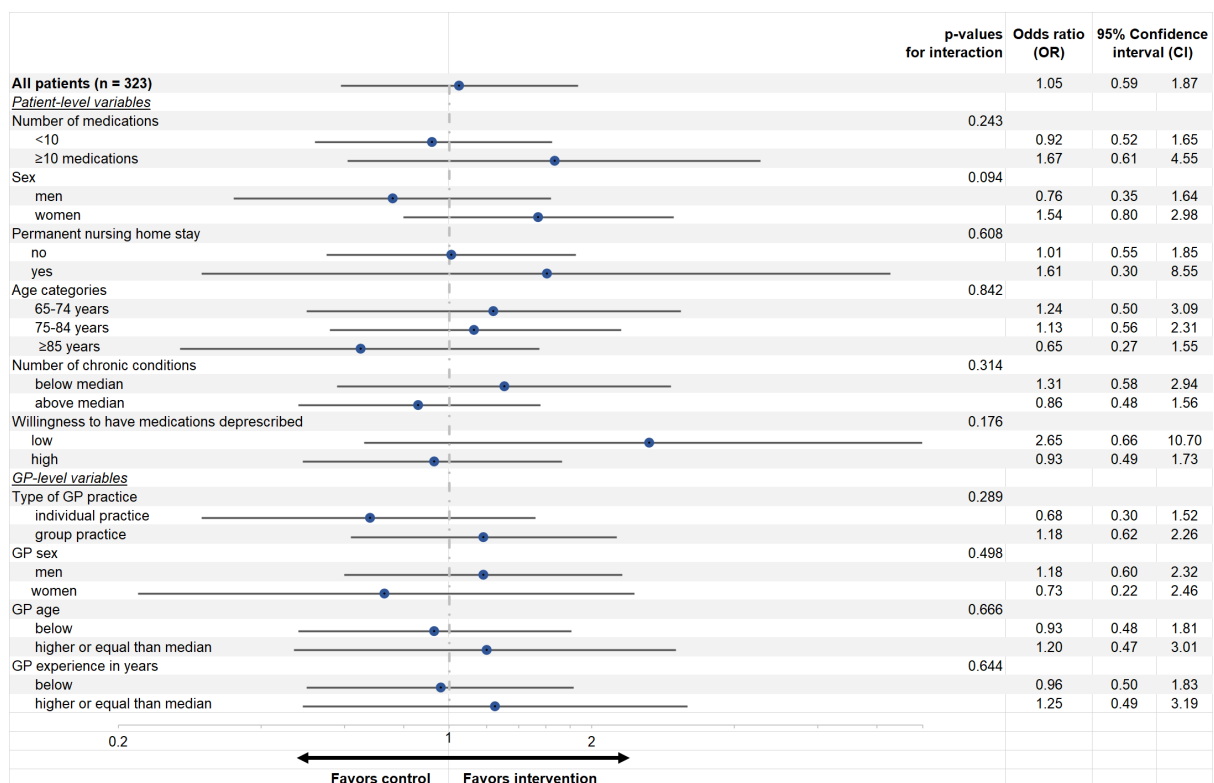
	n (%)	OR (95% CI)	p-value	
Improvement in the MAI score between baseline and 12-month follow-up	67 (41%)	68 (43%)	1.36 (0.73 to 2.53)	0.326
Improvement in the AOU between baseline and 12-month follow-up	28 (17%)	24 (15%)	0.91 (0.35 to 2.39)	0.845

AOU=Assessment of Underutilization, CI=Confidence Interval, MAI=Medication Appropriateness Index, OR=Odds Ratio. | Calculated using multiple imputed data. | <sup>1</sup>Models were adjusted for number of chronic medications, patient's gender, permanent nursing home stay (yes/no), number of chronic conditions, patients' willingness to have medications deprescribed, patients' age, practice form, GPs' gender, GPs' age, and GPs' experience.

## eFigure 5. Subgroup analyses for the primary outcomes

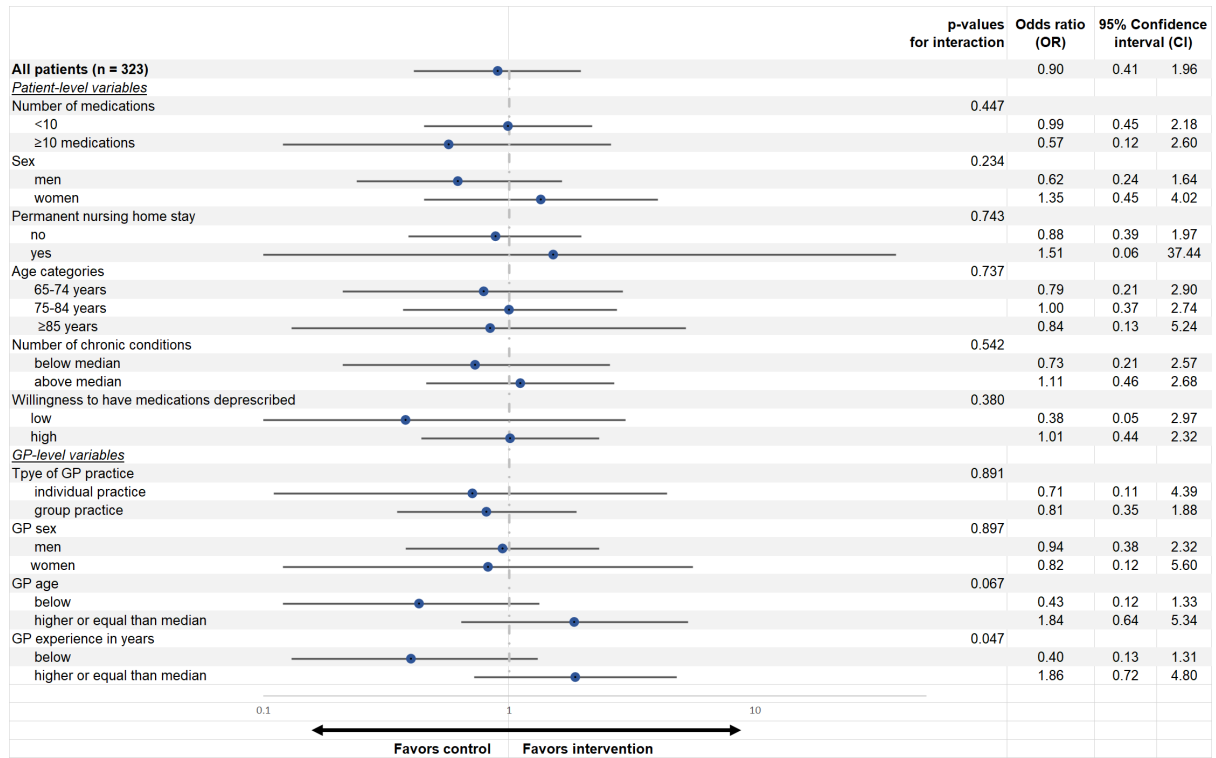
(n = 323)

Part A) Improvement in medication appropriateness between baseline and 12-month follow-up as measured by the Medication Appropriateness Index (MAI)





**Part B) Improvement in prescribing omissions between baseline and 12-month follow-up as measured by the Assessment of Underutilization**



Sub-group analyses as specified in the Statistical Analysis Plan. | Forest plots displayed on a logarithmic scale.

**eTable 5. Aggregated data analysis.**

	Control (n=22 GPs)	Intervention (n=21 GPs)	Percentage mean difference (95% CI)	p-value
<i>Mean percentage (95%-CI)</i>				
Improvement in the MAI score between baseline and 12-month follow-up	41.0 (26.9 to 55.2)	41.6 (30.8 to 52.5)	0.61 (-16.76 to 17.98)	0.944
Improvement in the AOU between baseline and 12-month follow-up	19.0 (7.2 to 30.8)	13.4 (6.1 to 20.7)	-5.64 (-19.45 to 8.18)	0.415

AOU=Assessment of Underutilization, CI=Confidence Interval, MAI=Medication Appropriateness Index, OR=Odds Ratio. | Calculated using multiple imputed data.

**eTable 6. Available case analysis: Primary and secondary outcomes.  
(n = 271)**

	Control	Intervention		p-value
<b>Primary outcomes</b>				
	<i>n (%)</i>		<i>OR (95% CI)</i>	
Improvement in the MAI score between baseline and 12-month follow-up	57/143 (40%)	62/139 (45%)	1.19 (0.67 to 2.12)	0.552
Improvement in the AOU between baseline and 12-month follow-up	22/133 (17%)	16/132 (12%)	0.72 (0.32 to 1.63)	0.430

<b>Secondary outcomes</b>				
<i>Medication-related secondary outcomes</i>				
	<i>n (%)</i>		<i>OR (95% CI)</i>	
Improvement in the MAI score between baseline and 6-month follow-up	53/140 (38%)	62/139 (45%)	1.34 (0.69 to 2.63)	0.389
Improvement in the AOU between baseline and 6-month follow-up	19/128 (15%)	15/134 (11%)	0.74 (0.32 to 1.70)	0.479
	<i>Mean (95% CI)</i>		<i>IRR (95% CI)<sup>4</sup></i>	
MAI total score at 6-month follow-up	21.8 (16.7; 27.0)	25.3 (20.9; 29.8)	1.33 (0.85 to 2.07)	0.216
MAI total score at 12-month follow-up	23.6 (18.2; 29.0)	26.3 (21.9; 30.7)	1.11 (0.68 to 1.81)	0.682
Total number of prescribing omissions at 6-month follow-up as measured by the AOU	1.1 (0.9; 1.3)	1.0 (0.8; 1.2)	1.02 (0.78 to 1.33)	0.878
Total number of prescribing omissions at 12-month follow-up as measured by the AOU	1.2 (1.0; 1.4)	0.9 (0.7; 1.1)	0.82 (0.64 to 1.06)	0.136
	<i>Mean (95% CI)</i>		<i>MD (95% CI)<sup>4</sup></i>	
Number of medications at 6-month follow-up	8 (7; 8)	7 (7; 8)	0.32 (-0.33 to 0.96)	0.334
Number of medications at 12-month follow-up	8 (7; 8)	8 (7; 9)	0.43 (-0.38 to 1.23)	0.300
<i>Patient-reported secondary outcomes</i>				
	<i>Mean (95% CI)</i>		<i>IRR (95% CI)<sup>4</sup></i>	
Number of falls at 6-month follow-up	0.3 (0.1; 0.4)	0.3 (0.2; 0.4)	0.92 (0.46 to 1.83)	0.816
Number of falls at 12-month follow-up	0.2 (0.1; 0.3)	0.2 (0.1; 0.3)	0.84 (0.47 to 1.51)	0.566
	<i>n (%)</i>		<i>OR (95% CI)</i>	
Any fracture(s) between baseline and 6-month follow-up <sup>1</sup>	4 (3%)	3 (2%)	0.72 (0.17 to 3.10)	0.660
Any fracture(s) between baseline and 12-month follow-up <sup>1</sup>	2 (1%)	3 (2%)	1.51 (0.27 to 8.50)	0.643
<i>Quality of life</i>				
	<i>Mean (95% CI)</i>		<i>MD (95% CI)<sup>4</sup></i>	
EQ-5D-5L utilities at 6-month follow-up <sup>2</sup> (inverse predicted utility – IPU)	0 (0 to 0)	0 (0 to 0)	-0.03 (-0.07 to 0.01)	0.139
EQ-5D-5L utilities at 12-month follow-up <sup>2</sup> (inverse predicted utility – IPU)	0 (0 to 0)	0 (0 to 0)	0.00 (-0.03 to 0.04)	0.915
Visual analogue scale at 6-month follow-up <sup>3</sup>	71 (68; 74)	72 (69; 75)	0.88 (-2.43 to 4.18)	0.603
Visual analogue scale at 12-month follow-up <sup>3</sup>	73 (70; 75)	73 (71; 76)	-0.09 (-3.28 to 3.09)	0.955

Acronyms: AOU=Assessment of Underutilization, CI=Confidence Interval, IRR=Incident Rate Ratio, MAI=Medication Appropriateness Index, MD=Mean Difference, OR=Odds Ratio. This table is based on multiple imputed data. | <sup>1</sup>Due to the low number of fractures only the binary variable (yes/no) was considered. | <sup>2</sup>Calculated based on the German Value Set for the EQ-5D-5L by Ludwig et al. PharmacoEconomics. 2018. | <sup>3</sup>Measured by visual analogue scale of the European Quality of Life-5 Dimensions questionnaire (EQ-VAS). Values range from 0 to 100 with higher values indicating a higher quality of life. | <sup>4</sup>Adjusted for baseline characteristics.

**eTable 7. Per-protocol set of participants.****Strict per-protocol set of patients.**<sup>1</sup>

	Randomized (n = 323)	Intervention (n = 160)	Control (n = 163)
Not receiving allocated intervention	26	13	13
Cluster <4	5	0	5
Age <65 years	0	0	0
Number of recorded chronic conditions <3	50	27	23
Number of recorded medications <5	83	47	36
PPset total (n = 194)	194	97	97

**Relaxed per-protocol set of patients.**<sup>1</sup>

	Randomized (n = 323)	Intervention (n = 160)	Control (n = 163)
Not receiving intervention	26	13	13
Cluster <4	5	0	5
Age <65 years	0	0	0
Number of recorded chronic conditions <1	31	15	16
Number of recorded medications <1	22	11	11
PPset total (n = 261)	261	138	123

<sup>1</sup> Multiple criteria can apply.**eTable 8. Per-protocol analyses: Primary outcomes**

	Control	Intervention	OR (95% CI)	p-value
<b>Strict per-protocol analysis</b> (n = 194, clusters = 39)	N=97	N= 97		
Improvement in the MAI score between baseline and 12-month follow-up	44 (46%)	45 (47%)	1.03 (0.59 to 1.77)	0.927
Improvement in the AOU between baseline and 12-month follow-up	10 (10%)	12 (12%)	1.25 (0.44 to 3.56)	0.678
<b>Relaxed per-protocol analysis</b> (n = 261, clusters = 43)	N=123	N=138		
Improvement in the MAI score between baseline and 12-month follow-up	47 (39%)	58 (42%)	1.18 (0.67 to 2.07)	0.568
Improvement in the AOU between baseline and 12-month follow-up	17 (14%)	20 (14%)	1.09 (0.48 to 2.47)	0.836

Acronyms: AOU=Assessment of Underutilization, CI=Confidence Interval, MAI=Medication Appropriateness Index, OR=Odds Ratio. | Calculated using multiple imputed data.

**eTable 9. Secondary outcomes: Per-protocol analysis**

	Control (n=163)	Intervention (n=160)		p-value
<b>Medication-related secondary outcomes</b>				
	n (%)		OR (95% CI)	
Improvement in the MAI score between baseline and 6-month follow-up	42 (44%)	47 (48%)	1.23 (0.62 to 2.44)	0.561

Improvement in the AOU between baseline and 6-month follow-up	14 (14%)	11 (11%)	0.80 (0.29 to 2.17)	0.658
	<i>Mean (95% CI)</i>		<i>IRR (95% CI)<sup>4</sup></i>	
MAI total score at 6-month follow-up	23 (17; 29)	27 (22; 33)	1.87 (1.19 to 2.95)	0.007
MAI total score at 12-month follow-up	24 (18; 31)	29 (23; 34)	1.50 (0.94 to 2.38)	0.088
Total number of prescribing omissions at 6-month follow-up as measured by the AOU	1 (1; 1)	1 (1; 1)	1.07 (0.77 to 1.48)	0.691
Total number of prescribing omissions at 12-month follow-up as measured by the AOU	1 (1; 1)	1 (1; 1)	0.82 (0.60 to 1.12)	0.216
	<i>Mean (95% CI)</i>		<i>Mean difference (95% CI)<sup>4</sup></i>	
Number of medications at 6-month follow-up	8 (7; 9)	8 (8; 9)	0.51 (-0.30 to 1.32)	0.219
Number of medications at 12-month follow-up	8 (8; 9)	9 (8; 10)	0.55 (-0.51 to 1.61)	0.312
<b>Patient-reported secondary outcomes</b>				
	<i>Mean (95% CI)</i>		<i>IRR (95% CI)<sup>4</sup></i>	
Number of falls at 6-month follow-up	0 (0; 0)	0 (0; 0)	0.67 (0.28 to 1.60)	0.362
Number of falls at 12-month follow-up	0 (0; 0)	0 (0; 0)	0.95 (0.45 to 1.98)	0.885
	<i>Mean (95% CI)</i>		<i>OR (95% CI)</i>	
Any fracture(s) between baseline and 6-month follow-up <sup>3</sup>	4 (5%)	1 (1%)	0.22 (0.02 to 1.91)	0.168
Any fracture(s) between baseline and 12-month follow-up <sup>3</sup>	2 (2%)	2 (2%)	0.89 (0.13 to 6.11)	0.904
<i>Quality of life</i>				
	<i>Mean (95% CI)</i>		<i>Mean difference (95% CI)<sup>4</sup></i>	
EQ-5D-5L utilities at 6-month follow-up <sup>1</sup> (inverse predicted utility – IPU)	0 (0 to 0)	0 (0 to 0)	-0.05 (-0.11 to 0.01)	0.067
EQ-5D-5L utilities at 12-month follow-up <sup>1</sup> (inverse predicted utility – IPU)	0 (0 to 0)	0 (0 to 0)	0.00 (-0.05 to 0.04)	0.904
Visual analogue scale at 6-month follow-up <sup>2</sup>	70 (67; 74)	72 (69; 76)	2.67 (-1.79 to 7.14)	0.240
Visual analogue scale at 12-month follow-up <sup>2</sup>	72 (69; 75)	73 (70; 76)	1.82 (-2.21 to 5.84)	0.376

Acronyms: AOU=Assessment of Underutilization, CI=Confidence Interval, IRR=Incident Rate Ratio, MAI=Medication Appropriateness Index, MD=Mean difference, OR=Odds Ratio. This table is based on multiple imputed data and the strict per-protocol set of patients. | <sup>1</sup>Calculated based on the German Value Set for the EQ-5D-5L by Ludwig et al. PharmacoEconomics. 2018. | <sup>2</sup>Measured by visual analogue scale of the European Quality of Life-5 Dimensions questionnaire (EQ-VAS). Values range from 0 to 100 with higher values indicating a higher quality of life. | <sup>3</sup>Due to the low number of fractures a binary variable (any fracture yes/no) was considered. | <sup>4</sup>Adjusted for baseline characteristics.

**eTable 10. Additional secondary outcomes: Comparison between the intervention and control group**

	<i>Control (n=163)</i>	<i>Intervention (n=160)</i>		<i>p-value</i>
<b>Additional secondary outcomes</b>				
	<i>Number of events (%)<sup>3</sup></i>		<i>IRR (95% CI)<sup>4</sup></i>	
Averaged MAI at 6-month follow-up <sup>1</sup>	140 (20)	143 (20)	1.42 (0.95 to 2.12)	0.084
Averaged MAI at 12-month follow-up <sup>1</sup>	141 (19)	149 (14)	1.29 (0.84 to 1.98)	0.250
Averaged number of prescribing omissions at the 6-month follow-up <sup>2</sup>	135 (25)	133 (30)	0.92 (0.65 to 1.29)	0.625
Averaged number of prescribing omissions at the 12-month follow-up <sup>2</sup>	133 (27)	138 (25)	0.74 (0.53 to 1.04)	0.0.81

Acronyms: AOU=Assessment of Underutilization, CI=Confidence Interval, IRR=Incident Rate Ratio, MAI=Medication Appropriateness Index. This table is based on multiple imputed data. | <sup>1</sup>The total MAI score divided by the total number of chronic medications. | <sup>2</sup>The total number of prescribing omissions divided by the total number of chronic conditions. | <sup>3</sup>Number of patients with data (with multiple imputations). | <sup>4</sup>Adjusted for baseline characteristics.

**eTable 11. Descriptive secondary outcomes.**

	<b>Control group (n = 163)</b>		<b>Intervention group (n = 160)</b>	
	<i>Missing n (%)</i>	<i>median [IQR]; mean (sd) or n (%)</i>	<i>Missing n (%)</i>	<i>median [IQR]; mean (sd) or n (%)</i>
<b>Falls</b>				
Number of falls in the last 6 months (baseline)	10 (6%)		5 (3%)	
0		128 (79%)		125 (78%)
1		19 (12%)		25 (16%)
2		4 (2.5%)		3 (1.9%)
>2		2 (1.2%)		2 (1.3%)
Number of falls in the last 6 months (6-month follow-up)	17 (10%)		18 (11%)	
0		121 (74%)		114 (71%)
1		20 (12%)		19 (12%)
2		2 (1.2%)		8 (5%)
>2		3 (1.8%)		1 (0.6%)
Number of falls in the last 6 months (12-month follow-up)	20 (12%)		20 (13%)	
0		118 (72%)		119 (74%)
1		21 (13%)		17 (11%)
2		3 (1.8%)		2 (1.3%)
>2		1 (0.6%)		2 (1.3%)
<b>Fractures</b>				
Number of fractures in the last 6 months (baseline)	8 (5%)		4 (3%)	
0		152 (93%)		152 (95%)
1		3 (1.8%)		4 (2.5%)
2		0 (0%)		0 (0%)

>2		0 (0%)		0 (0%)
Number of fractures in the last 6 months (6-month follow-up)	18 (11%)		18 (11%)	
0		141 (87%)		139 (87%)
1		2 (1.2%)		3 (1.9%)
2		0 (0%)		0 (0%)
>2		2 (1.2%)		0 (0%)
Number of fractures in the last 6 months (12-month follow-up)	20 (12%)		19 (12%)	
0		141 (87%)		138 (86%)
1		2 (1.2%)		3 (1.9%)
2		0 (0%)		0 (0%)
>2		0 (0%)		0 (0%)
<i>Quality of life<sup>1</sup></i>				
EQ-5D-5L – Mobility (baseline)	16 (10%)		8 (5%)	
No problems		59 (36%)		69 (43%)
Slight problems		35 (21%)		34 (21%)
Moderate problems		32 (20%)		28 (17%)
Severe problem		20 (12%)		21 (13%)
Unable		1 (0.61%)		0 (0.00%)
EQ-5D-5L – Mobility (6-month follow-up)	26 (16%)		22 (14%)	
No problems		50 (31%)		58 (36%)
Slight problems		36 (22%)		37 (23%)
Moderate problems		35 (21%)		33 (21%)
Severe problem		15 (9.2%)		8 (5.0%)
Unable		1 (0.61%)		2 (1.3%)
EQ-5D-5L – Mobility (12-month follow-up)	25 (15%)		25 (16%)	
No problems		63 (39%)		75 (47%)
Slight problems		37 (23%)		37 (23%)
Moderate problems		32 (20%)		18 (11%)
Severe problem		5 (3.1%)		5 (3.1%)
Unable		1 (0.61%)		0 (0.00%)
EQ-5D-5L – Selfcare (baseline)	16 (10%)		8 (5%)	
No problems		124 (76%)		134 (84%)
Slight problems		13 (8.0%)		11 (6.9%)
Moderate problems		7 (4.3%)		4 (2.5%)
Severe problem		2 (1.2%)		2 (1.3%)
Unable		1 (0.61%)		1 (0.63%)
EQ-5D-5L – Selfcare (6-month follow-up)	26 (16%)		22 (14%)	
No problems		119 (73%)		118 (74%)
Slight problems		10 (6.1%)		15 (9.4%)
Moderate problems		6 (3.7%)		3 (1.9%)
Severe problem		1 (0.61%)		1 (0.63%)
Unable		1 (0.61%)		1 (0.63%)
EQ-5D-5L – Selfcare (12-month follow-up)	25 (15%)		25 (16%)	
No problems		120 (74%)		116 (73%)

Slight problems		13 (8.0%)		13 (8.1%)
Moderate problems		3 (1.8%)		6 (3.8%)
Severe problem		2 (1.2%)		0 (0.00%)
Unable		0 (0.00%)		0 (0.00%)
EQ-5D-5L – Activities (baseline)	16 (10%)		8 (5%)	
No problems		99 (61%)		104 (65%)
Slight problems		19 (12%)		16 (10%)
Moderate problems		24 (15%)		22 (14%)
Severe problem		3 (1.8%)		8 (5.0%)
Unable		2 (1.2%)		2 (1.3%)
EQ-5D-5L – Activities (6-month follow-up)	26 (16%)		22 (14%)	
No problems		75 (46%)		82 (51%)
Slight problems		34 (21%)		31 (19%)
Moderate problems		18 (11%)		20 (13%)
Severe problem		8 (4.9%)		4 (2.5%)
Unable		2 (1.2%)		1 (0.63%)
EQ-5D-5L – Activities (12-month follow-up)	25 (15%)		26 (16%)	
No problems		90 (55%)		96 (60%)
Slight problems		25 (15%)		25 (16%)
Moderate problems		18 (11%)		11 (6.9%)
Severe problem		5 (3.1%)		2 (1.3%)
Unable		0 (0.00%)		0 (0.00%)
EQ-5D-5L – Pain or discomfort (baseline)	16 (10%)		8 (5%)	
No problems		61 (37%)		60 (38%)
Slight problems		31 (19%)		33 (21%)
Moderate problems		41 (25%)		43 (27%)
Severe problem		14 (8.6%)		13 (8.1%)
Unable		0 (0.00%)		3 (1.9%)
EQ-5D-5L – Pain or discomfort (6-month follow-up)	26 (16%)		22 (14%)	
No problems		25 (15%)		30 (19%)
Slight problems		51 (31%)		47 (29%)
Moderate problems		43 (26%)		50 (31%)
Severe problem		17 (10%)		11 (6.9%)
Unable		1 (0.61%)		0 (0.00%)
EQ-5D-5L – Pain or discomfort (12-month follow-up)	25 (15%)		25 (16%)	
No problems		40 (25%)		41 (26%)
Slight problems		53 (33%)		46 (29%)
Moderate problems		37 (23%)		37 (23%)
Severe problem		8 (4.9%)		11 (6.9%)
Unable		0 (0.00%)		0 (0.00%)
EQ-5D-5L – Anxiety (baseline)	17 (10%)		8 (5%)	
No problems		95 (58%)		99 (62%)
Slight problems		29 (18%)		33 (21%)
Moderate problems		19 (12%)		18 (11%)
Severe problem		3 (1.8%)		2 (1.3%)
Unable		0 (0.00%)		0 (0.00%)
EQ-5D-5L – Anxiety (6-month follow-up)	26 (16%)		22 (14%)	

No problems		77 (47%)		84 (52%)
Slight problems		40 (25%)		29 (18%)
Moderate problems		15 (9.2%)		22 (14%)
Severe problem		4 (2.5%)		3 (1.9%)
Unable		1 (0.61%)		0 (0.00%)
EQ-5D-5L – Anxiety (12-month follow-up)	25 (15%)		25 (16%)	
No problems		95 (58%)		88 (55%)
Slight problems		30 (18%)		34 (21%)
Moderate problems		12 (7.4%)		12 (7.5%)
Severe problem		1 (0.61%)		1 (0.63%)
Unable		0 (0.00%)		0 (0.00%)
<i>EQ-5D-5L utilities</i> <sup>2</sup>				
Baseline	17 (10%)	0.89 [0.81, 0.94]; 0.83 (0.18)	8 (5%)	0.89 [0.77, 0.97]; 0.83 (0.20)
6-month follow-up	26 (16%)	0.86 [0.77, 0.92]; 0.79 (0.22)	22 (14%)	0.87 [0.80, 0.94]; 0.83 (0.18)
12-month follow-up	25 (15%)	0.91 [0.82, 0.94]; 0.86 (0.14)	26 (16%)	0.91 [0.83, 0.94]; 0.87 (0.15)
<i>EQ-5D-5L - Visual analogue scale (VAS)</i> <sup>3</sup>				
Baseline VAS	17 (10%)	70 [60, 80]; 70 (17)	10 (6%)	75 [60, 80]; 71 (17)
6-month follow-up VAS	26 (16%)	75 [60, 85]; 71 (17)	22 (14%)	75 [60, 80]; 72 (16)
12-month follow-up VAS	25 (15%)	75 [60, 80]; 73 (15)	27 (17%)	75 [60, 85]; 73 (15)

Acronyms: IQR=inter quartile range, SD=standard deviation, MAI=Medication Appropriateness Index, AOU=Assessment of underutilization, VAS=Visual Analogue Scale. | This table is based on the raw data. | <sup>1</sup>Quality of Life was assessed using the EQ-5D-5L questionnaire of the EuroQol group. | <sup>2</sup>Calculated based on the German Value Set for the EQ-5D-5L by Ludwig et al. PharmacoEconomics. 2018. | <sup>3</sup>Measured by visual analogue scale of the European Quality of Life-5 Dimensions questionnaire (EQ-VAS). Values range from 0 to 100 with higher values indicating a higher quality of life.

## References:

1. Samsa GP, Hanlon JT, Schmader KE, et al. A summated score for the medication appropriateness index: development and assessment of clinimetric properties including content validity. *Journal of clinical epidemiology*. Aug 1994;47(8):891-6.
2. Rubin D. *Multiple Imputation for Nonresponse in Surveys*. vol 81. John Wiley & Sons.; 2004.