

Supplementary information

Authors

Charles N. Agoti^{1,2, #}, Katherine E. Gallagher^{1,3}, Joyce Nyiro¹, Arnold W. Lambisia¹, Nickson Murunga¹, Khadija Said Mohammed¹, Leonard Ndwiga¹, John M. Morobe¹, Maureen W. Mburu¹, Edidah M. Ongera¹, Timothy Makori¹, My Phan^{4,5}, Matthew Cotten^{4,5}, Lynette Isabella Ochola-Oyier¹, Simon Dellicour^{6,7}, Philip Bejon^{1,8}, George Githinji^{1,2}, and D. James Nokes^{1,9}.

Affiliations

¹Kenya Medical Research Institute (KEMRI)-Wellcome Trust Research Programme (KWTRP), Kilifi, Kenya.

²Pwani University, Kilifi, Kenya.

³London School of Hygiene & Tropical Medicine, United Kingdom.

⁴Medical Research Centre (MRC)/ Uganda Virus Research Institute, Entebbe, Uganda

⁵MRC-University of Glasgow, Centre for Virus Research Glasgow, United Kingdom.

⁶Spatial Epidemiology Lab (SpELL), Université Libre de Bruxelles, Bruxelles, Belgium.

⁷Department of Microbiology, Immunology and Transplantation, Rega Institute, Laboratory for Clinical and Epidemiological Virology, KU Leuven, University of Leuven, Leuven, Belgium.

⁸Nuffield Department of Medicine, University of Oxford, Oxford, United Kingdom.

⁹School of Life Sciences and Zeeman Institute for Systems Biology and Infectious Disease Epidemiology Research (SBIDER), University of Warwick, Coventry, United Kingdom.

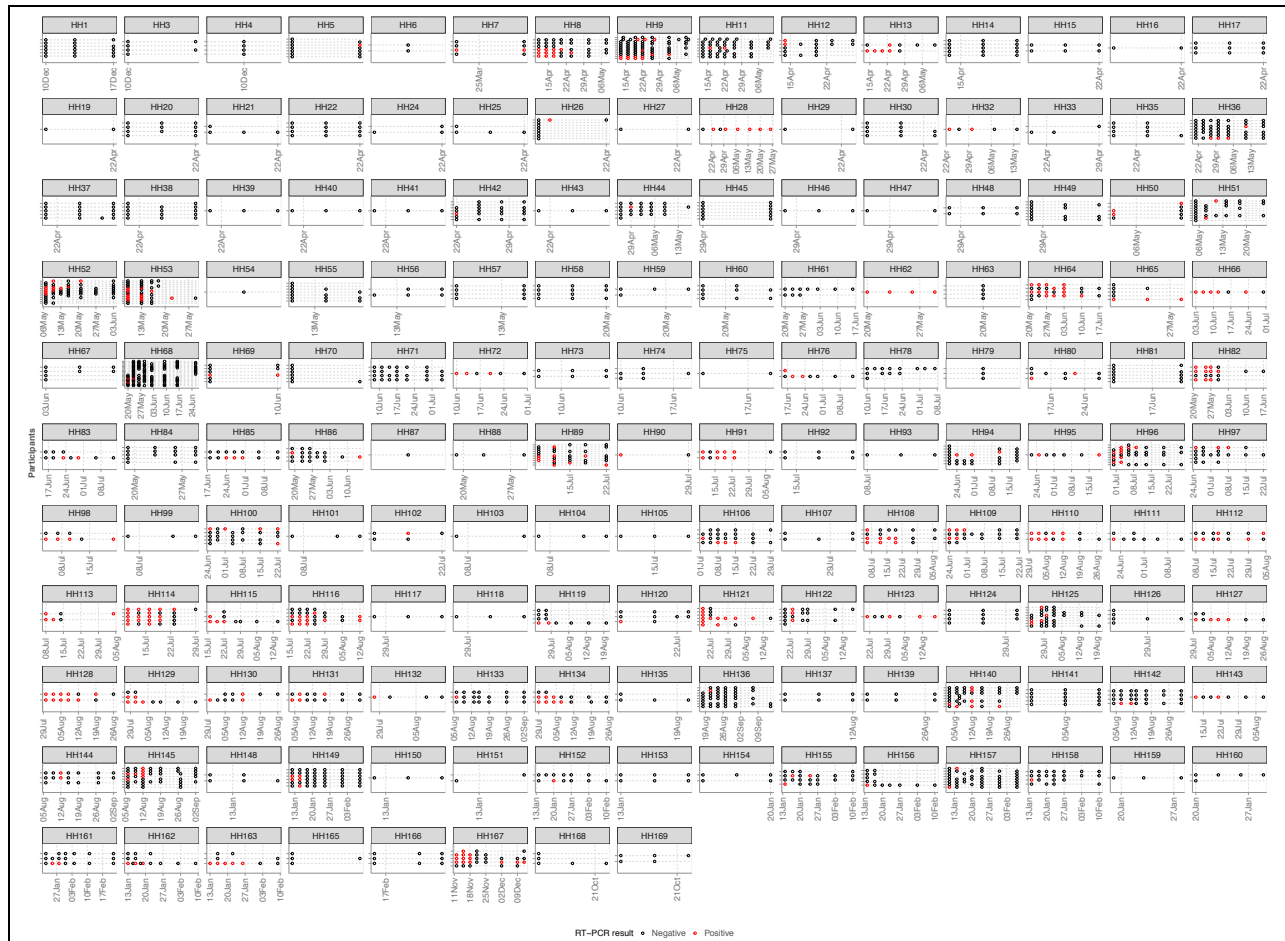
S1 Table. Demographic characteristics of study participants.

Characteristic	Positive	Negative	Total	p value
Recruited households	80	78	158	
Recruited participants	171	402	573	
Sex				0.383
female (%)	104 (60.8)	227 (56.5)	331(57.8)	
male (%)	67 (39.2)	175 (43.5)	242 (42.2)	
Age distribution (years)				
Median (IQR)	27.0 (13.0-46.0)	19.0 (10.0-41.0)	24.0 (11.0-44.0)	
Age categories				0.109
0-4 y (%)	17 (9.8)	40 (10.0)	57 (9.9)	
5-9 y (%)	15 (8.8)	42 (10.4)	57 (9.9)	
10-19 y (%)	33 (19.3)	109 (27.1)	142 (24.8)	
20-39 y (%)	52 (30.4)	113 (18.1)	165 (28.8)	
40-64 y (%)	47 (27.5)	74 (18.4)	121 (21.1)	
65+ y (%)	7 (4.1)	24 (6.0)	31 (5.4)	
Symptom status				<0.001
asymptomatic	63 (36.8)	311 (77.4)	374 (65.3)	
symptomatic	108 (63.2)	91 (22.6)	199 (34.7)	

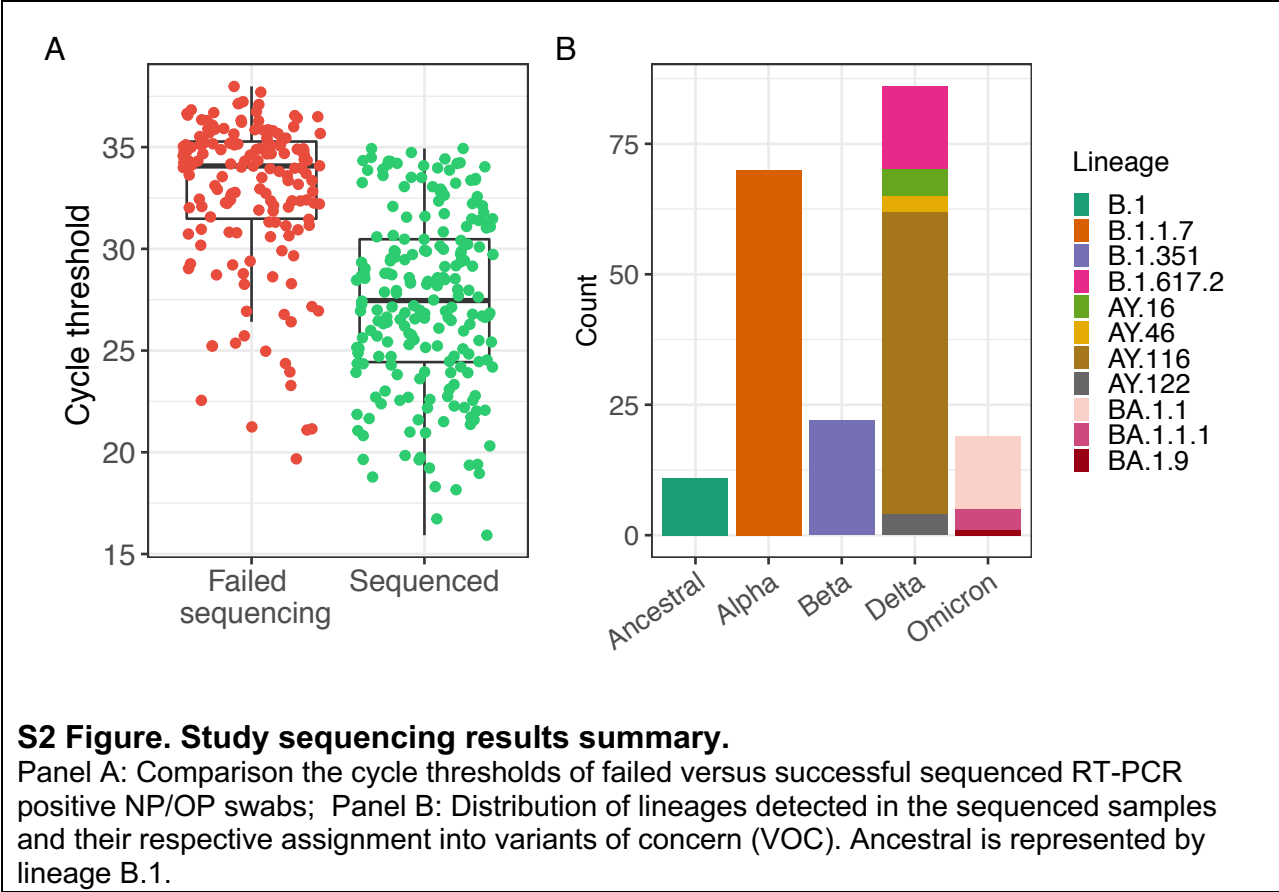
IQR: Interquartile Range, y: years

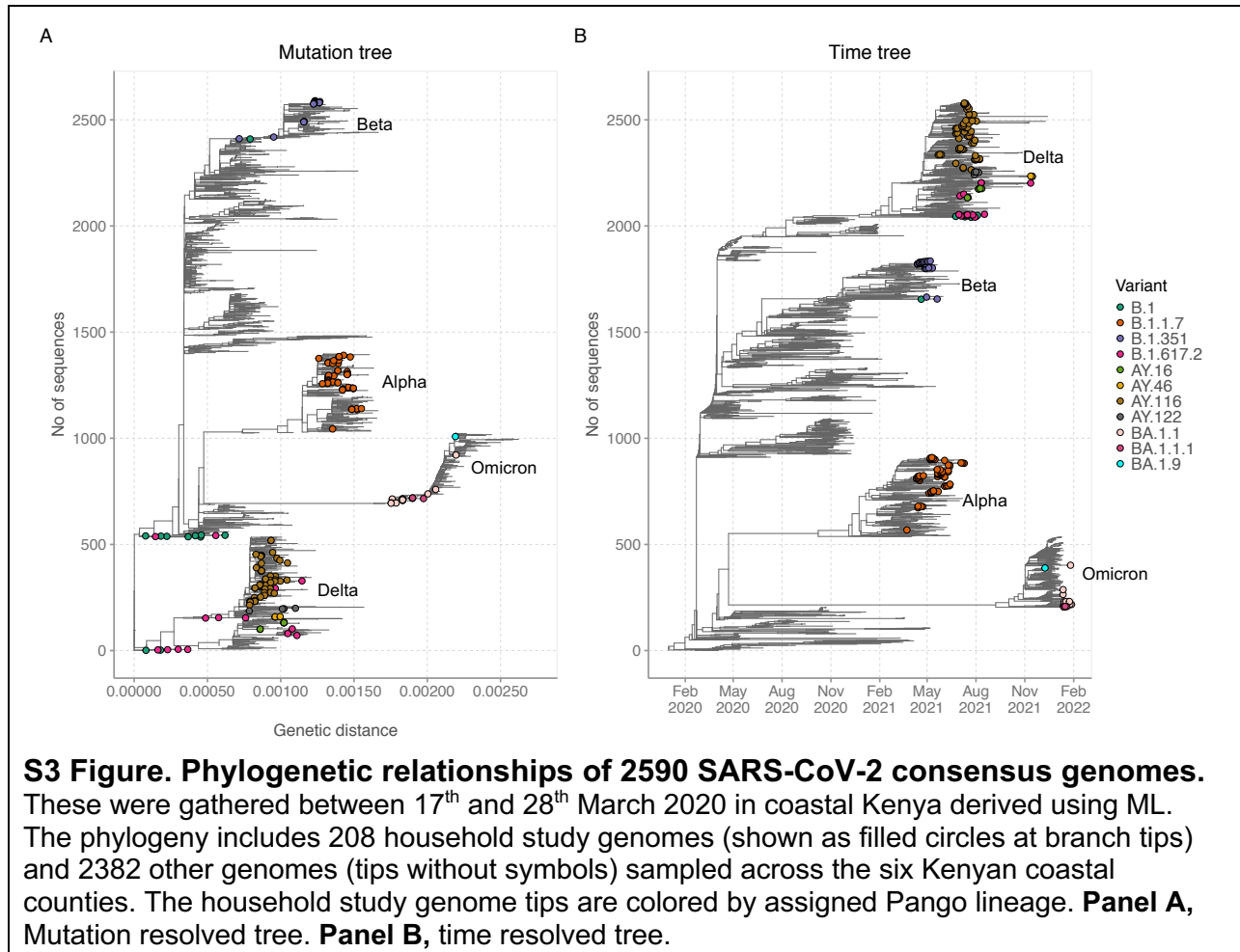
S2 Table. Lineages identified in the sequenced samples from household study and their frequency at household and participant level

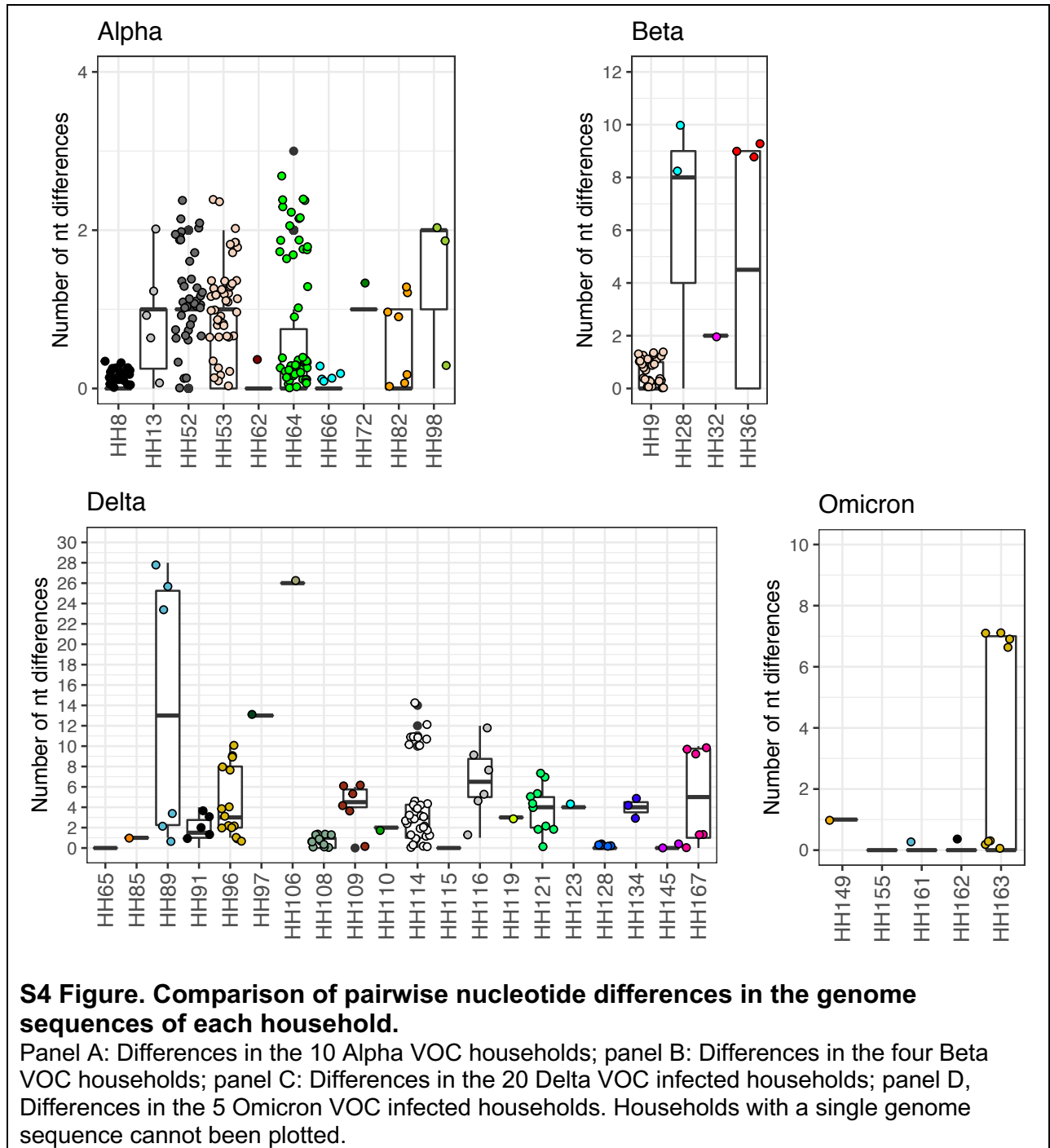
Lineage	Genomes	households	Participants	Lineage history
B.1	11	10	11	Predominantly detected in Europe early in 2020.
B.1.1.7	70	16	33	Alpha VOC
B.1.351	22	6	10	Beta VOC
B.1.617.2	16	14	15	Delta VOC
AY.16	5	2	3	Delta VOC sub-lineage predominantly detected in Kenya and multiple other countries
AY.46	3	1	3	Delta VOC sub-lineage predominantly detected in Africa
AY.116	58	19	35	Delta VOC sub-lineage predominantly detected in Africa
AY.122	4	2	3	Delta VOC sub-lineage predominantly detected in Europe
BA.1.1	14	6	8	Omicron VOC sub-lineage
BA.1.1.1	4	2	2	Omicron VOC sub-lineage predominantly detected in Europe
BA.1.9	1	1	1	Omicron VOC sub-lineage predominantly detected in Brazil



S1 Figure. Sampling timelines and participant positivity in enrolled study households: 158 households, 573 participants, 2091 NP/OP swabs. A black circle is SARS-CoV-2 negative NP/OP, a red-circle is SARS-CoV-2 positive NP/OP.







Appendix: Accession numbers of the sequences from the household study deposited into GISAID databases

GISAID Name	GISAID Accession	HH_ID	Pango Lineage
hCoV-19/Kenya/C88814/2021	EPI_ISL_6944234	HH7	B.1.1.7
hCoV-19/Kenya/C91180/2021	EPI_ISL_2602534	HH8	B.1.1.7
hCoV-19/Kenya/C91759/2021	EPI_ISL_2602552	HH8	B.1.1.7
hCoV-19/Kenya/C92331/2021	EPI_ISL_2602577	HH8	B.1.1.7
hCoV-19/Kenya/C91760/2021	EPI_ISL_2602553	HH8	B.1.1.7
hCoV-19/Kenya/C91181/2021	EPI_ISL_2602535	HH8	B.1.1.7
hCoV-19/Kenya/C93346/2021	EPI_ISL_2602602	HH8	B.1.1.7
hCoV-19/Kenya/C91761/2021	EPI_ISL_2602554	HH8	B.1.1.7
hCoV-19/Kenya/C91182/2021	EPI_ISL_2602536	HH8	B.1.1.7
hCoV-19/Kenya/C92333/2021	EPI_ISL_2602578	HH8	B.1.1.7
hCoV-19/Kenya/C92271/2021	EPI_ISL_3150137	HH9	B.1.351
hCoV-19/Kenya/C91600/2021	EPI_ISL_2602546	HH9	B.1.351
hCoV-19/Kenya/C91601/2021	EPI_ISL_2602547	HH9	B.1.351
hCoV-19/Kenya/C92272/2021	EPI_ISL_3150138	HH9	B.1.351
hCoV-19/Kenya/C92937/2021	EPI_ISL_2602588	HH9	B.1.351
hCoV-19/Kenya/C92585/2021	EPI_ISL_2602582	HH9	B.1.351
hCoV-19/Kenya/C94719/2021	EPI_ISL_7237336	HH9	B.1.351
hCoV-19/Kenya/C93639/2021	EPI_ISL_2602615	HH9	B.1.351
hCoV-19/Kenya/C93186/2021	EPI_ISL_2602594	HH9	B.1.351
hCoV-19/Kenya/C92733/2021	EPI_ISL_7237332	HH9	B.1
hCoV-19/Kenya/C93763/2021	EPI_ISL_2602616	HH9	B.1.351
hCoV-19/Kenya/C92283/2021	EPI_ISL_3150139	HH11	B.1.1.7
hCoV-19/Kenya/C91774/2021	EPI_ISL_2602555	HH12	B.1.1.7
hCoV-19/Kenya/C92336/2021	EPI_ISL_2602579	HH13	B.1.1.7
hCoV-19/Kenya/C91765/2021	EPI_ISL_2602570	HH13	B.1.1.7
hCoV-19/Kenya/C93179/2021	EPI_ISL_6944188	HH13	B.1.1.7
hCoV-19/Kenya/C92757/2021	EPI_ISL_2602583	HH13	B.1.1.7
hCoV-19/Kenya/C92339/2021	EPI_ISL_2602580	HH26	B.1.351
hCoV-19/Kenya/C94433/2021	EPI_ISL_2602632	HH28	B.1.351
hCoV-19/Kenya/C93185/2021	EPI_ISL_2602593	HH28	B.1.351
hCoV-19/Kenya/C95523/2021	EPI_ISL_3150140	HH28	B.1.351
hCoV-19/Kenya/C94432/2021	EPI_ISL_2602631	HH32	B.1.351
hCoV-19/Kenya/C93178/2021	EPI_ISL_2602612	HH32	B.1.351
hCoV-19/Kenya/C93778/2021	EPI_ISL_2602603	HH36	B.1.351
hCoV-19/Kenya/C94434/2021	EPI_ISL_2602633	HH36	B.1.351
hCoV-19/Kenya/C94773/2021	EPI_ISL_6944125	HH36	B.1.351
hCoV-19/Kenya/C95899/2021	EPI_ISL_2602678	HH36	B.1.351
hCoV-19/Kenya/C95162/2021	EPI_ISL_2602641	HH50	B.1.1.7
hCoV-19/Kenya/C95530/2021	EPI_ISL_3150141	HH52	B.1.1.7
hCoV-19/Kenya/C95531/2021	EPI_ISL_3150142	HH52	B.1.1.7
hCoV-19/Kenya/C95837/2021	EPI_ISL_2602674	HH52	B.1.1.7
hCoV-19/Kenya/C95532/2021	EPI_ISL_3150143	HH52	B.1.1.7
hCoV-19/Kenya/C95838/2021	EPI_ISL_2602675	HH52	B.1.1.7
hCoV-19/Kenya/C95533/2021	EPI_ISL_2602669	HH52	B.1.1.7
hCoV-19/Kenya/C96392/2021	EPI_ISL_3150148	HH52	B.1.1.7
hCoV-19/Kenya/C95534/2021	EPI_ISL_3150144	HH52	B.1.1.7
hCoV-19/Kenya/C96568/2021	EPI_ISL_2602701	HH52	B.1.1.7
hCoV-19/Kenya/C95839/2021	EPI_ISL_2602676	HH52	B.1.1.7
hCoV-19/Kenya/C95564/2021	EPI_ISL_6944206	HH53	B.1.1.7
hCoV-19/Kenya/C97616/2021	EPI_ISL_5797402	HH53	B.1.1.7
hCoV-19/Kenya/C96381/2021	EPI_ISL_3150145	HH53	B.1.1.7
hCoV-19/Kenya/C95565/2021	EPI_ISL_2602670	HH53	B.1.1.7
hCoV-19/Kenya/C95566/2021	EPI_ISL_2602671	HH53	B.1.1.7
hCoV-19/Kenya/C96388/2021	EPI_ISL_3150147	HH53	B.1.1.7
hCoV-19/Kenya/C95567/2021	EPI_ISL_2602672	HH53	B.1.1.7
hCoV-19/Kenya/C96386/2021	EPI_ISL_3150146	HH53	B.1.1.7
hCoV-19/Kenya/C95569/2021	EPI_ISL_2602722	HH53	B.1.1.7

hCoV-19/Kenya/C95570/2021	EPI_ISL_2602723	HH53	B.1.1.7
hCoV-19/Kenya/C95571/2021	EPI_ISL_2602724	HH53	B.1.1.7
hCoV-19/Kenya/C98175/2021	EPI_ISL_2602742	HH62	B.1.1.7
hCoV-19/Kenya/C97303/2021	EPI_ISL_2602721	HH62	B.1.1.7
hCoV-19/Kenya/C98887/2021	EPI_ISL_5797413	HH64	B.1.1.7
hCoV-19/Kenya/C99753/2021	EPI_ISL_3049440	HH64	B.1.1.7
hCoV-19/Kenya/C98636/2021	EPI_ISL_5797411	HH64	B.1.1.7
hCoV-19/Kenya/C98223/2021	EPI_ISL_2602746	HH64	B.1.1.7
hCoV-19/Kenya/C97554/2021	EPI_ISL_2602732	HH64	B.1.1.7
hCoV-19/Kenya/C97866/2021	EPI_ISL_2602737	HH64	B.1.1.7
hCoV-19/Kenya/C98222/2021	EPI_ISL_2602745	HH64	B.1.1.7
hCoV-19/Kenya/C98886/2021	EPI_ISL_7237388	HH64	B.1.1.7
hCoV-19/Kenya/C98888/2021	EPI_ISL_6709405	HH64	B.1.1.7
hCoV-19/Kenya/C98635/2021	EPI_ISL_7237375	HH64	B.1.1.7
hCoV-19/Kenya/C98225/2021	EPI_ISL_2602747	HH64	B.1.1.7
hCoV-19/Kenya/C97868/2021	EPI_ISL_2602738	HH64	B.1.1.7
hCoV-19/Kenya/C97556/2021	EPI_ISL_5797400	HH64	B.1.1.7
hCoV-19/Kenya/C97622/2021	EPI_ISL_2602734	HH65	AY.116
hCoV-19/Kenya/C97982/2021	EPI_ISL_2602739	HH65	AY.116
hCoV-19/Kenya/C98497/2021	EPI_ISL_2602748	HH65	AY.116
hCoV-19/Kenya/C99301/2021	EPI_ISL_3049427	HH66	B.1.1.7
hCoV-19/Kenya/C98894/2021	EPI_ISL_2602762	HH66	B.1.1.7
hCoV-19/Kenya/C99665/2021	EPI_ISL_7237395	HH66	B.1.1.7
hCoV-19/Kenya/C100097/2021	EPI_ISL_3049459	HH66	B.1.1.7
hCoV-19/Kenya/C97315/2021	EPI_ISL_7237367	HH68	B.1.351
hCoV-19/Kenya/C99750/2021	EPI_ISL_7237411	HH69	B.1.1.7
hCoV-19/Kenya/C100103/2021	EPI_ISL_3049460	HH72	B.1.1.7
hCoV-19/Kenya/C99755/2021	EPI_ISL_3049441	HH72	B.1.1.7
hCoV-19/Kenya/C100105/2021	EPI_ISL_3049461	HH80	B.1.1.7
hCoV-19/Kenya/C97548/2021	EPI_ISL_6709497	HH82	B.1.1.7
hCoV-19/Kenya/C98229/2021	EPI_ISL_5797409	HH82	B.1.1.7
hCoV-19/Kenya/C97550/2021	EPI_ISL_2602731	HH82	B.1.1.7
hCoV-19/Kenya/C97980/2021	EPI_ISL_5797404	HH82	B.1.1.7
hCoV-19/Kenya/C97551/2021	EPI_ISL_6709440	HH82	B.1.1.7
hCoV-19/Kenya/C101629/2021	EPI_ISL_3049665	HH85	AY.116
hCoV-19/Kenya/C101330/2021	EPI_ISL_3049550	HH85	AY.116
hCoV-19/Kenya/C103808/2021	EPI_ISL_3150081	HH89	AY.116
hCoV-19/Kenya/C104088/2021	EPI_ISL_7236562	HH89	B.1
hCoV-19/Kenya/C103610/2021	EPI_ISL_3049852	HH89	AY.116
hCoV-19/Kenya/C103611/2021	EPI_ISL_3049833	HH89	B.1.617.2
hCoV-19/Kenya/C103612/2021	EPI_ISL_3049834	HH89	AY.116
hCoV-19/Kenya/C105933/2021	EPI_ISL_7236630	HH90	B.1.617.2
hCoV-19/Kenya/C105699/2021	EPI_ISL_3910032	HH91	AY.116
hCoV-19/Kenya/C103640/2021	EPI_ISL_3150059	HH91	AY.116
hCoV-19/Kenya/C104665/2021	EPI_ISL_7236567	HH91	B.1
hCoV-19/Kenya/C104879/2021	EPI_ISL_6944143	HH91	AY.116
hCoV-19/Kenya/C105700/2021	EPI_ISL_3910035	HH91	AY.116
hCoV-19/Kenya/C101329/2021	EPI_ISL_7236506	HH94	B.1
hCoV-19/Kenya/C102007/2021	EPI_ISL_3049691	HH94	AY.116
hCoV-19/Kenya/C103652/2021	EPI_ISL_7236548	HH94	B.1
hCoV-19/Kenya/C101996/2021	EPI_ISL_7236517	HH96	B.1.617.2
hCoV-19/Kenya/C101998/2021	EPI_ISL_6944187	HH96	AY.116
hCoV-19/Kenya/C102000/2021	EPI_ISL_7236518	HH96	AY.116
hCoV-19/Kenya/C102433/2021	EPI_ISL_3049846	HH96	AY.116
hCoV-19/Kenya/C103609/2021	EPI_ISL_6944136	HH96	AY.116
hCoV-19/Kenya/C102883/2021	EPI_ISL_6944149	HH96	AY.116
hCoV-19/Kenya/C103225/2021	EPI_ISL_3049850	HH97	AY.116
hCoV-19/Kenya/C102438/2021	EPI_ISL_7236525	HH97	B.1.617.2
hCoV-19/Kenya/C103638/2021	EPI_ISL_3150058	HH98	B.1.1.7
hCoV-19/Kenya/C102434/2021	EPI_ISL_3049776	HH98	B.1.1.7
hCoV-19/Kenya/C103187/2021	EPI_ISL_3049826	HH98	B.1.1.7
hCoV-19/Kenya/C104095/2021	EPI_ISL_3150105	HH100	AY.116

hCoV-19/Kenya/C103648/2021	EPI_ISL_3150064	HH106	AY.116
hCoV-19/Kenya/C102387/2021	EPI_ISL_6944141	HH106	B.1.617.2
hCoV-19/Kenya/C103800/2021	EPI_ISL_3150079	HH108	AY.116
hCoV-19/Kenya/C102873/2021	EPI_ISL_3049797	HH108	AY.116
hCoV-19/Kenya/C103801/2021	EPI_ISL_3150080	HH108	AY.116
hCoV-19/Kenya/C102874/2021	EPI_ISL_3049798	HH108	AY.116
hCoV-19/Kenya/C104664/2021	EPI_ISL_3150127	HH108	AY.116
hCoV-19/Kenya/C102872/2021	EPI_ISL_3049796	HH108	AY.116
hCoV-19/Kenya/C101333/2021	EPI_ISL_3049551	HH109	AY.116
hCoV-19/Kenya/C101335/2021	EPI_ISL_3049552	HH109	AY.116
hCoV-19/Kenya/C102004/2021	EPI_ISL_3049751	HH109	AY.116
hCoV-19/Kenya/C101636/2021	EPI_ISL_3049666	HH109	AY.116
hCoV-19/Kenya/C106456/2021	EPI_ISL_6944239	HH110	AY.116
hCoV-19/Kenya/C106338/2021	EPI_ISL_3909866	HH110	AY.116
hCoV-19/Kenya/C103226/2021	EPI_ISL_3049851	HH112	AY.116
hCoV-19/Kenya/C103642/2021	EPI_ISL_3150060	HH114	AY.116
hCoV-19/Kenya/C103643/2021	EPI_ISL_3150061	HH114	AY.116
hCoV-19/Kenya/C104668/2021	EPI_ISL_7236571	HH114	B.1.617.2
hCoV-19/Kenya/C104886/2021	EPI_ISL_7236600	HH114	B.1
hCoV-19/Kenya/C103644/2021	EPI_ISL_3150062	HH114	AY.116
hCoV-19/Kenya/C103848/2021	EPI_ISL_3150086	HH114	AY.116
hCoV-19/Kenya/C103850/2021	EPI_ISL_6944204	HH114	AY.116
hCoV-19/Kenya/C104671/2021	EPI_ISL_6944140	HH114	B.1.617.2
hCoV-19/Kenya/C103646/2021	EPI_ISL_3150063	HH114	AY.116
hCoV-19/Kenya/C104887/2021	EPI_ISL_6944213	HH114	AY.116
hCoV-19/Kenya/C104672/2021	EPI_ISL_3150128	HH115	B.1.617.2
hCoV-19/Kenya/C104673/2021	EPI_ISL_3150129	HH115	AY.16
hCoV-19/Kenya/C104674/2021	EPI_ISL_3150130	HH116	AY.116
hCoV-19/Kenya/C104676/2021	EPI_ISL_3150131	HH116	AY.116
hCoV-19/Kenya/C105216/2021	EPI_ISL_6709422	HH116	B.1.617.2
hCoV-19/Kenya/C104873/2021	EPI_ISL_6944124	HH116	AY.116
hCoV-19/Kenya/C106194/2021	EPI_ISL_3910162	HH119	AY.116
hCoV-19/Kenya/C105748/2021	EPI_ISL_7236622	HH119	AY.116
hCoV-19/Kenya/C104727/2021	EPI_ISL_7236591	HH120	B.1.617.2
hCoV-19/Kenya/C104889/2021	EPI_ISL_6944123	HH121	AY.116
hCoV-19/Kenya/C105765/2021	EPI_ISL_6944205	HH121	AY.116
hCoV-19/Kenya/C106395/2021	EPI_ISL_7236665	HH121	B.1
hCoV-19/Kenya/C106189/2021	EPI_ISL_3910159	HH121	AY.116
hCoV-19/Kenya/C104890/2021	EPI_ISL_7236611	HH121	B.1.617.2
hCoV-19/Kenya/C104892/2021	EPI_ISL_6944192	HH121	AY.116
hCoV-19/Kenya/C105691/2021	EPI_ISL_7236621	HH122	B.1
hCoV-19/Kenya/C107193/2021	EPI_ISL_7236708	HH123	B.1.617.2
hCoV-19/Kenya/C106832/2021	EPI_ISL_7236700	HH123	B.1.617.2
hCoV-19/Kenya/C106324/2021	EPI_ISL_7236651	HH127	B.1.617.2
hCoV-19/Kenya/C106334/2021	EPI_ISL_3909859	HH128	AY.116
hCoV-19/Kenya/C106458/2021	EPI_ISL_3909896	HH128	AY.116
hCoV-19/Kenya/C106697/2021	EPI_ISL_3909947	HH128	AY.116
hCoV-19/Kenya/C106335/2021	EPI_ISL_3909862	HH128	AY.116
hCoV-19/Kenya/C106589/2021	EPI_ISL_3909920	HH128	AY.116
hCoV-19/Kenya/C106459/2021	EPI_ISL_3909900	HH128	AY.116
hCoV-19/Kenya/C106696/2021	EPI_ISL_3909942	HH128	AY.116
hCoV-19/Kenya/C106181/2021	EPI_ISL_7236638	HH129	B.1
hCoV-19/Kenya/C106386/2021	EPI_ISL_3909872	HH129	AY.116
hCoV-19/Kenya/C106630/2021	EPI_ISL_3909936	HH133	AY.122
hCoV-19/Kenya/C106262/2021	EPI_ISL_3910200	HH134	AY.122
hCoV-19/Kenya/C106540/2021	EPI_ISL_7236687	HH134	B.1
hCoV-19/Kenya/C106397/2021	EPI_ISL_3909875	HH134	AY.122
hCoV-19/Kenya/C106263/2021	EPI_ISL_6944157	HH134	AY.122
hCoV-19/Kenya/C106828/2021	EPI_ISL_7236695	HH142	B.1.617.2
hCoV-19/Kenya/C103805/2021	EPI_ISL_7236554	HH143	B.1
hCoV-19/Kenya/C113902/2022	EPI_ISL_11116830	HH149	BA.1.1
hCoV-19/Kenya/C113903/2022	EPI_ISL_11116831	HH149	BA.1.1

hCoV-19/Kenya/C113981/2022	EPI_ISL_11116843	HH155	BA.1.1
hCoV-19/Kenya/C114051/2022	EPI_ISL_11116848	HH155	BA.1.1
hCoV-19/Kenya/C114287/2022	EPI_ISL_11116859	HH155	BA.1.1
hCoV-19/Kenya/C113966/2022	EPI_ISL_11116840	HH156	BA.1.1.1
hCoV-19/Kenya/C113980/2022	EPI_ISL_11116842	HH157	BA.1.1
hCoV-19/Kenya/C113972/2022	EPI_ISL_11116841	HH158	BA.1.1
hCoV-19/Kenya/C114317/2022	EPI_ISL_11116862	HH161	BA.1.1
hCoV-19/Kenya/C114418/2022	EPI_ISL_11116864	HH161	BA.1.1
hCoV-19/Kenya/C113936/2022	EPI_ISL_11116838	HH162	BA.1.1.1
hCoV-19/Kenya/C114136/2022	EPI_ISL_11116853	HH162	BA.1.1.1
hCoV-19/Kenya/C114017/2022	EPI_ISL_11116846	HH162	BA.1.1.1
hCoV-19/Kenya/C114222/2022	EPI_ISL_11116857	HH163	BA.1.1
hCoV-19/Kenya/C114133/2022	EPI_ISL_11116852	HH163	BA.1.1
hCoV-19/Kenya/C113933/2022	EPI_ISL_11116837	HH163	BA.1.1
hCoV-19/Kenya/C114020/2022	EPI_ISL_11116847	HH163	BA.1.1
hCoV-19/Kenya/C114359/2022	EPI_ISL_11116863	HH163	BA.1.1
hCoV-19/Kenya/C111708/2021	EPI_ISL_6709504	HH167	AY.46
hCoV-19/Kenya/C112904/2021	EPI_ISL_11116699	HH167	BA.1.9
hCoV-19/Kenya/C111861/2021	EPI_ISL_6944217	HH167	AY.46
hCoV-19/Kenya/C111709/2021	EPI_ISL_6709400	HH167	B.1.617.2
hCoV-19/Kenya/C111863/2021	EPI_ISL_6944218	HH167	AY.46