

Minimum Reporting Standards in MR Spectroscopy checklist (according to Lin et al. NMR Biomed 2021)	
1. Hardware	
a. Field strength [T]	3
b. Manufacturer	Siemens
c. Model (software version if available)	Prisma Fit
d. RF coils: nuclei (transmit/ receive), number of channels, type, body part	1H TX/RX 64 channels, head, Siemens
e. Additional hardware	N/A
2. Acquisition	
a. Pulse sequence	FID-CRT MR spectroscopic imaging
b. Volume of Interest (VOI) locations	The excited 55 mm-thick slab was centered around the posterior cingulate region.
c. Nominal VOI size [cm ³ , mm ³]	200×200×55 mm ³
d. Repetition Time (TR), Echo Time (TE) [ms, s]	TR=950 ms / 0.8 ms acquisition delay
e. Total number of Excitations or acquisitions per spectrum	1 average
In time series for kinetic studies	N/A
i. Number of Averaged spectra (NA) per time-point	N/A
ii. Averaging method (e.g. block-wise or moving average)	N/A
iii. Total number of spectra (acquired / in time-series)	N/A
f. Additional sequence parameters (spectral width in Hz, number of spectral points, frequency offsets); If STEAM: Mixing Time TM; If MRSI: 2D or 3D, FOV in all directions, matrix size, acceleration factors	Bandwidth: 1325 Hz, 588 spectral points, MRSI: 3D, FOV 200×200×130 mm ² ,
g. Water Suppression Method	WET
h. Shimming Method, reference peak, and thresholds for “acceptance of shim” chosen	Standard shim + manual adjustment, water peak < 30 Hz
i. Triggering or motion correction method (respiratory, peripheral, cardiac triggering, incl. device used and delays)	N/A
3. Data analysis methods and outputs	
a. Analysis software	LCModel 6.3-1
b. Processing steps deviating from quoted reference or product	N/A
c. Output measure (e.g. absolute concentration, institutional units, ratio)	institutional units, ratio
d. Quantification references and assumptions, fitting model assumptions	Simulated in NMRScope-B, macromolecular background
4. Data Quality	
a. Reported variables (SNR, Linewidth (with reference peaks))	SNR was calculated using the pseudoreplica method, and linewidth as FWHM of the NAA fit
b. Data exclusion criteria	CRLBs >20% for tNAA, tCr and Glu+Gln (Glx)
c. Quality measures of postprocessing Model fitting (e.g. CRLB, goodness of fit, SD of residual)	CRLB
d. Sample Spectrum	See Supplemental Digital Content Figure 2

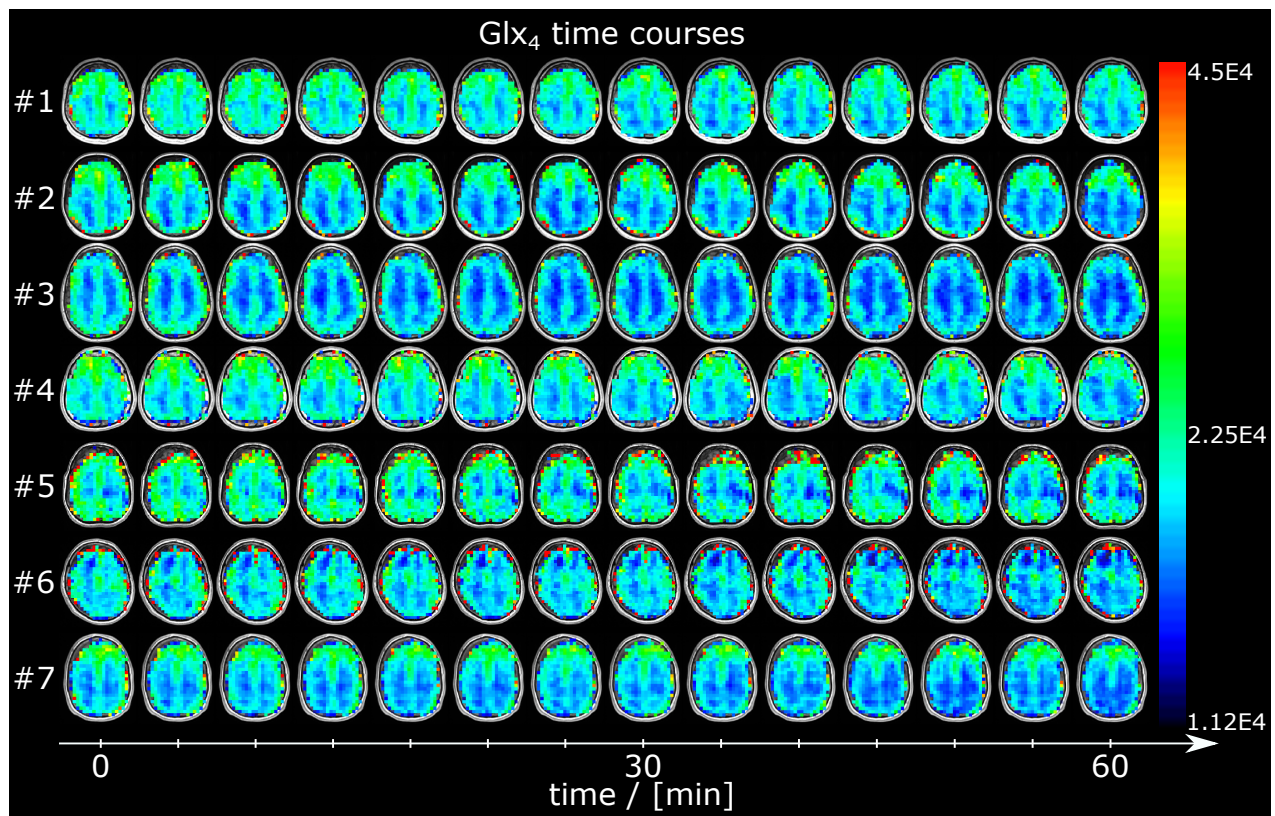
Supplemental Digital Content Table 1: Minimum Reporting Standards for in vivo MR Spectroscopy

Note. – CRLB = Cramér-Rao lower bounds; FID = free induction decay; FOV = field of view; FWHM = full-width-at-half-maximum; Glu = Glutamate; Gln = Glutamine; tNAA = total N-acetylaspartate; SNR = signal-to-noise ratio; tCr = total creatine; VOI = volume of interest.

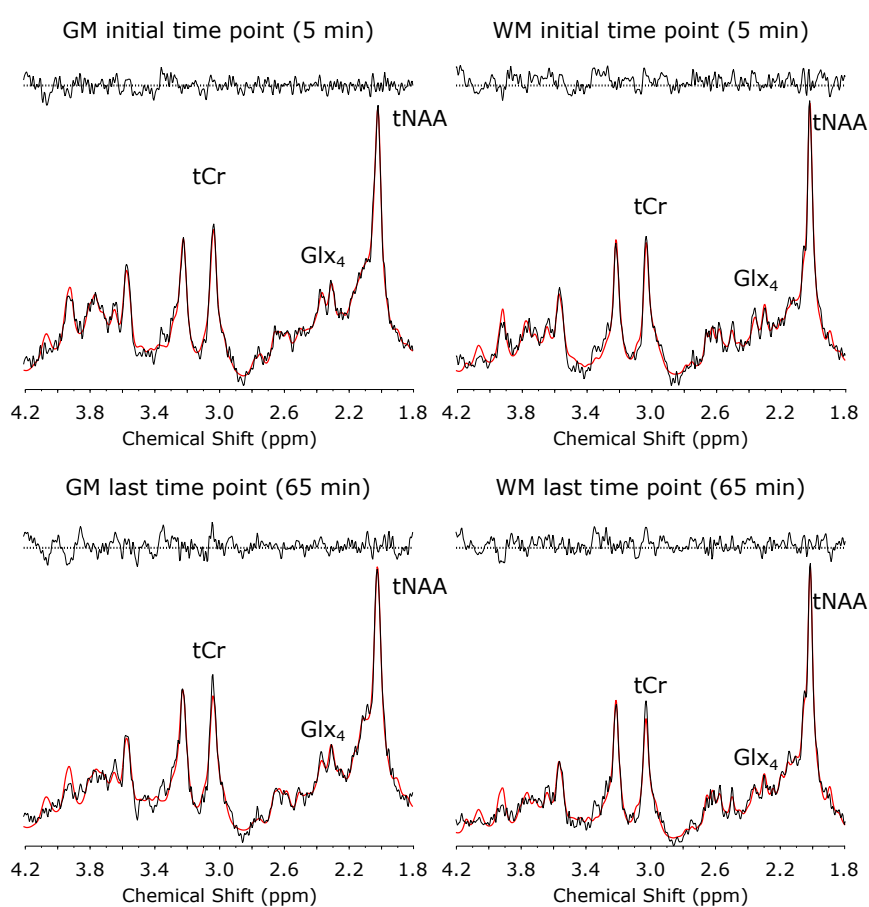
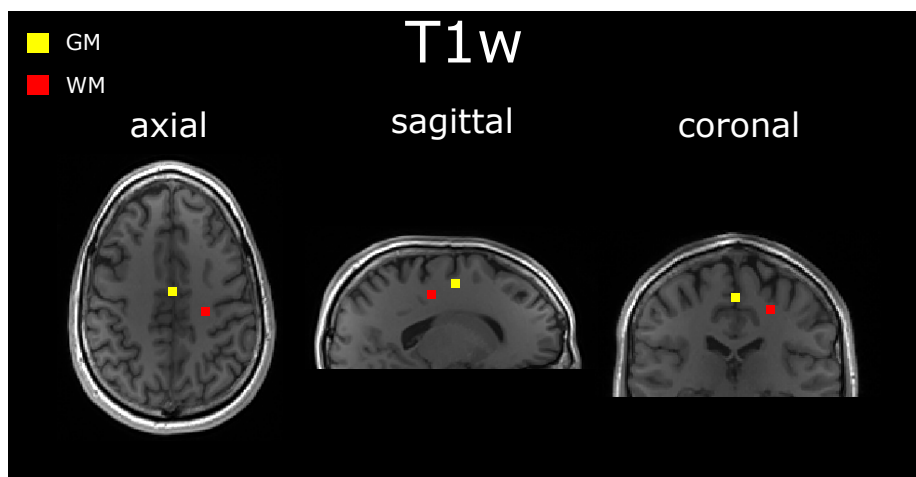
Metabolite	Gray matter voxel concentration [a.u.] (CRLB [%])		White matter voxel concentration [a.u.] (CRLB [%])	
	5 min	65 min	5 min	65 min
tCr	1.07E4 (4%)	1.00E4 (5%)	7.47E3 (5%)	6.75E3 (4%)
tNAA	2.25E4 (3%)	2.25E4 (3%)	1.90E4 (3%)	2.03E4 (2%)
Glx4*	2.10E4 (7%)	1.53E4 (10%)	1.09E4 (10%)	9.00E3 (11%)
Glx23	2.68E4 (5%)	2.76E4 (5%)	1.36E4 (8%)	1.44E4 (6%)
Glu4*	1.44E4 (7%)	1.06E4 (10%)	7.77E3 (10%)	6.21E3 (12%)
Glu23	1.83E4 (7%)	1.82E4 (8%)	8.51E3 (11%)	6.60E3 (16%)
Gln4*	6.55E3 (12%)	4.63E3 (17%)	3.11E3 (18%)	2.80E3 (19%)
Gln23	8.46E3 (13%)	9.36E3 (13%)	5.11E3 (17%)	7.76E3 (12%)
Cr	7.13E3 (13%)	5.84E3 (17%)	5.58E3 (12%)	4.00E3 (15%)
PCr	3.60E3 (24%)	4.19E3 (24%)	1.89E3 (34%)	2.75E3 (22%)
NAA	2.12E4 (3%)	2.21E4 (3%)	1.69E4 (3%)	1.68E4 (3%)
NAAG	1.30E3 (30%)	4.15E2(111%)	2.17E3 (14%)	3.54E3 (9%)

*deuterium labeled
unlabeled

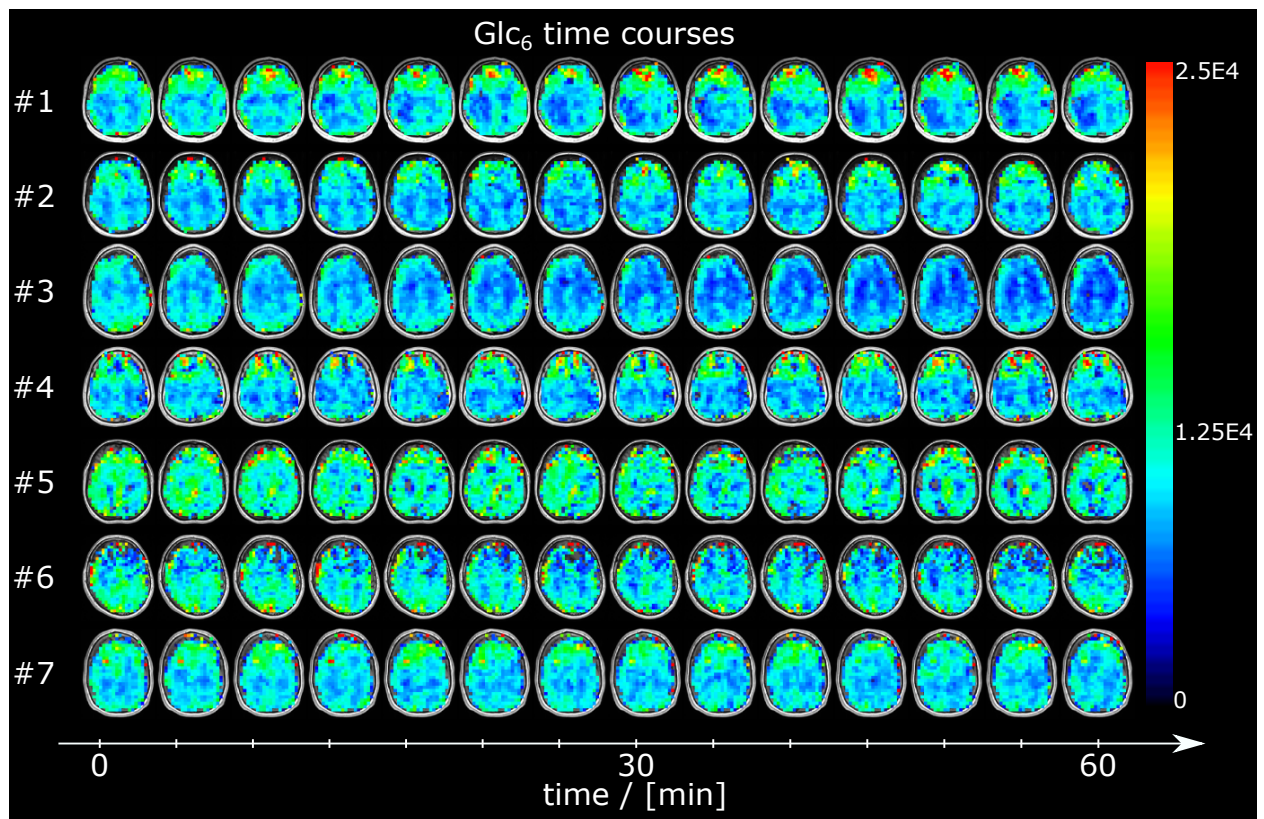
Supplemental Digital Content Table 2: LCModel spectral fit output of a single representative GM and WM voxel for selected metabolites from the first (5 min) and last (60 min) time point after D-glucose ingestion, respectively. Respective spectra and LCModel fits are shown in Supplemental Digital Content Figure 2.



Supplemental Digital Content Figure 1: Time courses of axial glutamate+glutamine (Glx₄) maps from all subjects over the entire measurement visualizing the image intensity decrease over time due to deuterium labeling.



Supplemental Digital Content Figure 2: Sample spectra (black) and LCMoDel fit (red) from a single gray matter (GM) and white matter (WM) voxel of one representative volunteer at the beginning (5 min) and the end (65 min) of the MRSI scan. Spectra were first-order corrected for illustration purposes. Relevant metabolites are total creatine (tCr), glutamate+glutamine (Glx) and total N-acetylaspartate (tNAA). Spectral concentration fits of these particular voxels are shown in Supplemental Digital Content Table 1.



Supplemental Digital Content Figure 3: Time courses of axial glucose (Glc_6) maps from all subjects over the entire measurement visualizing the image intensity decrease over time due to deuterium labeling. No quality criteria threshold was applied for Glc_6 data.