

1 **Supplements to: Impact of the COVID-19 pandemic on the circulation of**
2 **other pathogens in England**

3 **Running title:**

4 Lauren Hayes^{1#}, Hannah Uri^{1#}, Denisa Bojkova², Jindrich Cinatl jr.^{2,3}, Mark N. Wass^{1*},
5 Martin Michaelis^{1*}

6 ¹ School of Biosciences, University of Kent, Canterbury CT2 7NJ, UK

7 ² Institute for Medical Virology, University Hospital, Goethe University, Paul Ehrlich-
8 Str. 40, 60596 Frankfurt am Main, Germany

9 ³ Dr. Petra Joh-Forschungshaus, Komturstr. 3A, 60528 Frankfurt am Main, Germany

10
11 # equal contribution

12
13 * Corresponding authors:

14 Mark Wass, School of Biosciences, University of Kent, Canterbury CT2 7NJ, UK;
15 phone +44 1227 82 7626; e-mail M.N.Wass@kent.ac.uk

16 Martin Michaelis, School of Biosciences, University of Kent, Canterbury CT2 7NJ, UK;
17 phone +44 1227 82 7804; e-mail M.Michaelis@kent.ac.uk

18 **Suppl. Methods**

19 **Infectious disease data sources**

20 The infectious diseases that were studied in this report are presented together with
21 their anticipated modes of transmission in Suppl. Table 1. 'Influenza-like illness'
22 include diseases that were diagnosed as influenza based on the sudden onset of
23 clinical symptoms including runny nose, fever, malaise, aches, cough, sneezing, and
24 nausea, which was not always confirmed by a diagnostic test. Hence, some cases
25 may have been caused by other respiratory viruses [Fitzner et al., 2018]. 'Skin and
26 subcutaneous tissue infections' encompasses both uncomplicated and necrotising
27 pathological conditions of the skin or subcutaneous fat, resulting in erythema,
28 oedema, inflammation, and pain. This includes (but is not limited to) diseases such
29 as cellulitis, impetigo, folliculitis, abscesses, carbuncles, and trauma-related
30 infections [Esposito et al., 2017]. 'Infectious intestinal diseases' refers to infections of
31 the stomach, small intestine, and/or bowel, with symptoms including diarrhoea,
32 vomiting, and abdominal pain, typically reflecting diseases such as gastroenteritis,
33 cholera, and typhoid fever [Donaldson et al., 2019].

34 Weekly case numbers were available for England for all diseases, except for
35 methicillin resistant *Staphylococcus aureus* (MRSA), Lyme disease, and hepatitis E
36 that were recorded quarterly. For diseases with seasonal transmission patterns
37 (influenza-like illnesses, pneumococcal disease, strep throat, scarlet fever
38 cryptosporidiosis, foodborne illness, norovirus, Lyme disease), the average season
39 peaks were calculated based on the included pre-COVID-19 years.

40 Infectious disease case number dynamics during the COVID-19 pandemic were
41 compared to those of COVID-19 and in the context of the prevention measures that
42 were in place at the time. Rubella was excluded from the analysis due to low case
43 numbers (<5) and diseases with cumulative quarterly cases due to lack of
44 comparable data.

45 Measles, mumps and rubella (MMR), tuberculosis, scarlet fever, foodborne illness
46 and whooping cough case numbers reported to the UK Health Security Agency
47 (UKHSA) by medical practitioners were derived from the PHE Notifications of
48 Infectious Diseases (NOIDs) database

49 [[https://www.gov.uk/government/collections/notifications-of-infectious-diseases-](https://www.gov.uk/government/collections/notifications-of-infectious-diseases-noids)
50 [noids](https://www.gov.uk/government/collections/notifications-of-infectious-diseases-noids)]. Lyme disease, hepatitis C, hepatitis E, cryptosporidiosis, shigellosis, strep
51 throat, and pneumococcal disease case numbers were derived from NOIDs
52 causative agent reports, which are based on notifications from laboratories in
53 England [[https://www.gov.uk/government/collections/notifications-of-infectious-](https://www.gov.uk/government/collections/notifications-of-infectious-diseases-noids)
54 [diseases-noids](https://www.gov.uk/government/collections/notifications-of-infectious-diseases-noids)].

55 MRSA data was derived from the joint UKHSA/ Office for National Statistics (ONS)
56 MRSA bacteraemia monthly count reports

57 [[https://www.gov.uk/government/statistics/mrsa-bacteraemia-monthly-data-by-](https://www.gov.uk/government/statistics/mrsa-bacteraemia-monthly-data-by-location-of-onset)
58 [location-of-onset](https://www.gov.uk/government/statistics/mrsa-bacteraemia-monthly-data-by-location-of-onset)].

59 Laboratory confirmed norovirus cases were extracted from 2020 to 2022 national
60 norovirus and rotavirus bulletins (from 2020 onwards)

61 [[https://www.gov.uk/government/statistical-data-sets/national-norovirus-and-](https://www.gov.uk/government/statistical-data-sets/national-norovirus-and-rotavirus-bulletin-management-information--2)
62 [rotavirus-bulletin-management-information--2](https://www.gov.uk/government/statistical-data-sets/national-norovirus-and-rotavirus-bulletin-management-information--2)] and weekly UKHSA reports (prior to
63 2020) [[https://www.gov.uk/government/statistics/norovirus-and-rotavirus-summary-](https://www.gov.uk/government/statistics/norovirus-and-rotavirus-summary-of-surveillance-2019-to-2020)
64 [of-surveillance-2019-to-2020](https://www.gov.uk/government/statistics/norovirus-and-rotavirus-summary-of-surveillance-2019-to-2020)]. Data was extracted from the norovirus routine
65 laboratory reports of positive norovirus samples from the Second Generation
66 Surveillance System (SGSS).

67 Chickenpox, influenza-like-illness (ILI), herpes simplex virus (HSV), infectious
68 intestinal disease, skin and subcutaneous tissue infection (SSTI), and urinary tract
69 infection (UTI) data was derived from the Royal Collage of General Practitioners
70 (RCGP) Research and Surveillance Centre (RSC) public health data
71 [<https://www.rcgp.org.uk/representing-you/research-at-rcgp/research-surveillance-centre/public-health-data>]. COVID-19 data was derived from the Coronavirus
72 (COVID-19) Infection Survey of the ONS
73 [<https://www.ons.gov.uk/peoplepopulationandcommunity/healthandsocialcare/conditionsanddiseases/datasets/coronaviruscovid19infectionsurveydata>].
74 Information on circulating SARS-CoV-2 variants was derived from the variants of
75 concern technical briefing 44 (22 July 2022) of UKHSA
76 [<https://www.gov.uk/government/publications/investigation-of-sars-cov-2-variants-technical-briefings>].
77
78
79
80

81 **Timeline of protection measures**

82 An overview of the timing of prevention measures is provided in Suppl. Table 2.
83 Dates and guidance are based on the British Foreign Policy Group (BFPG) COVID-
84 19 Timeline by Evie Aspinall (<https://bfpg.co.uk/2020/04/covid-19-timeline/>). The
85 accuracy of this information was confirmed using GOV.UK guidance, policy papers,
86 and records including prime minister statements and daily press briefings on
87 governmental responses to the COVID-19 pandemic (Prime Minister’s statement on
88 coronavirus (COVID-19): 23 March 2020 [Internet]. GOV.UK. [cited 2022 Aug 16].
89 Available from: <https://www.gov.uk/government/speeches/pm-address-to-the-nation-on-coronavirus-23-march-2020>;
90 <https://www.gov.uk/government/speeches/pm-statement-on-coronavirus-18-march-2020>;
91 <https://www.gov.uk/government/news/prime-minister-announces-new-national-restrictions>;
92 <https://lordslibrary.parliament.uk/covid-19-local-alert-levels-three-tier-system-for-england>;
93 <https://www.gov.uk/government/publications/covid-19-response-autumn-and-winter-plan-2021>;
94 <https://www.gov.uk/government/publications/covid-19-response-spring-2021>;
95 <https://www.gov.uk/government/news/prime-minister-confirms-move-to-step-4>).
96
97
98
99

100 **References**

101 Donaldson AL, Clough HE, O'Brien SJ, Harris JP. Symptom profiling for infectious
102 intestinal disease (IID): a secondary data analysis of the IID2 study. *Epidemiol Infect.*
103 2019 Jan;147:e229. doi: 10.1017/S0950268819001201.

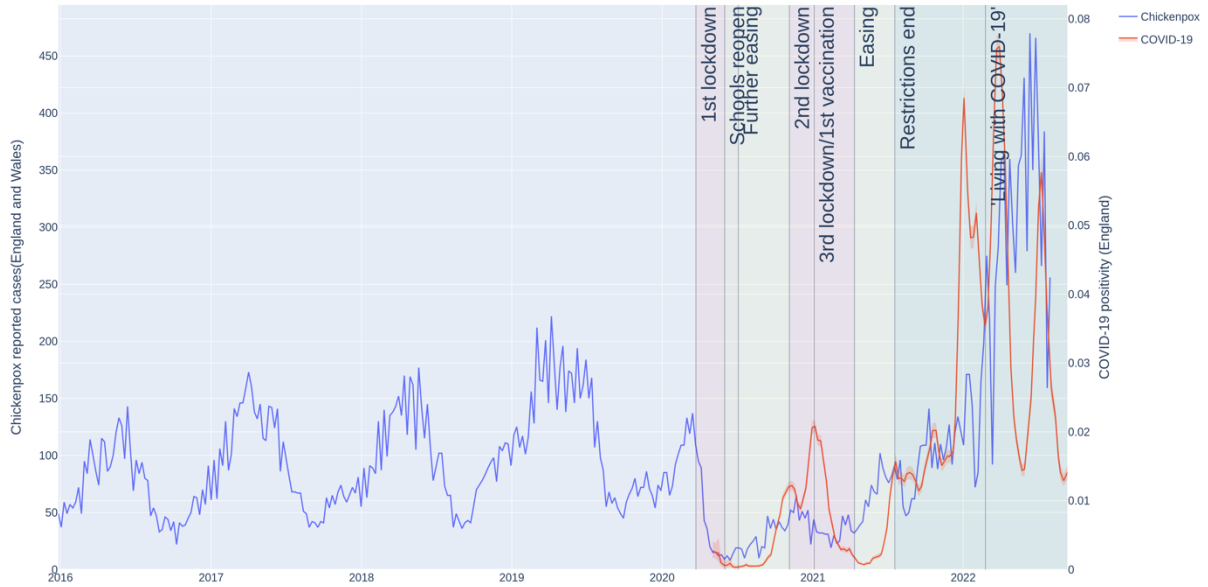
104 Esposito S, Bassetti M, Concia E, De Simone G, De Rosa FG, Grossi P, Novelli A,
105 Menichetti F, Petrosillo N, Tinelli M, Tumbarello M, Sanguinetti M, Viale P, Venditti M,
106 Viscoli C; Italian Society of Infectious and Tropical Diseases. Diagnosis and
107 management of skin and soft-tissue infections (SSTI). A literature review and
108 consensus statement: an update. *J Chemother.* 2017 Aug;29(4):197-214. doi:
109 10.1080/1120009X.2017.1311398.

110 Fitzner J, Qasmieh S, Mounts AW, Alexander B, Besselaar T, Briand S, Brown C,
111 Clark S, Dueger E, Gross D, Hauge S, Hirve S, Jorgensen P, Katz MA, Mafi A, Malik
112 M, McCarron M, Meerhoff T, Mori Y, Mott J, Olivera MTDC, Ortiz JR, Palekar R,
113 Rebelo-de-Andrade H, Soetens L, Yahaya AA, Zhang W, Vandemaele K. Revision of
114 clinical case definitions: influenza-like illness and severe acute respiratory infection.
115 *Bull World Health Organ.* 2018 Feb 1;96(2):122-128. doi: 10.2471/BLT.17.194514.

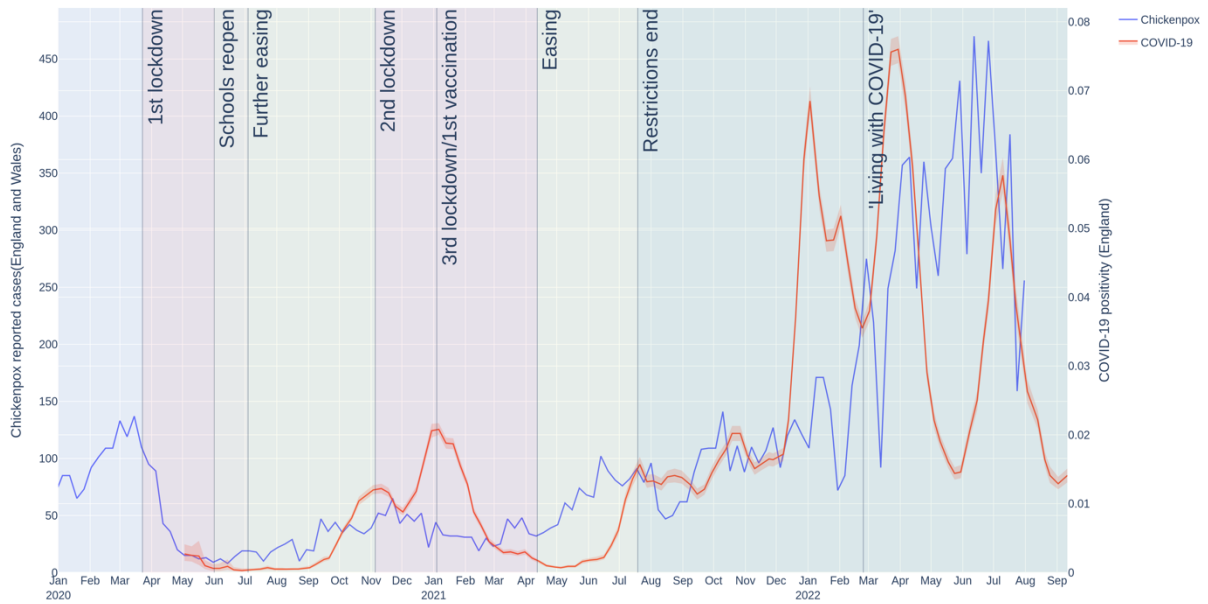
116

117

118 **Suppl. Figure 1**



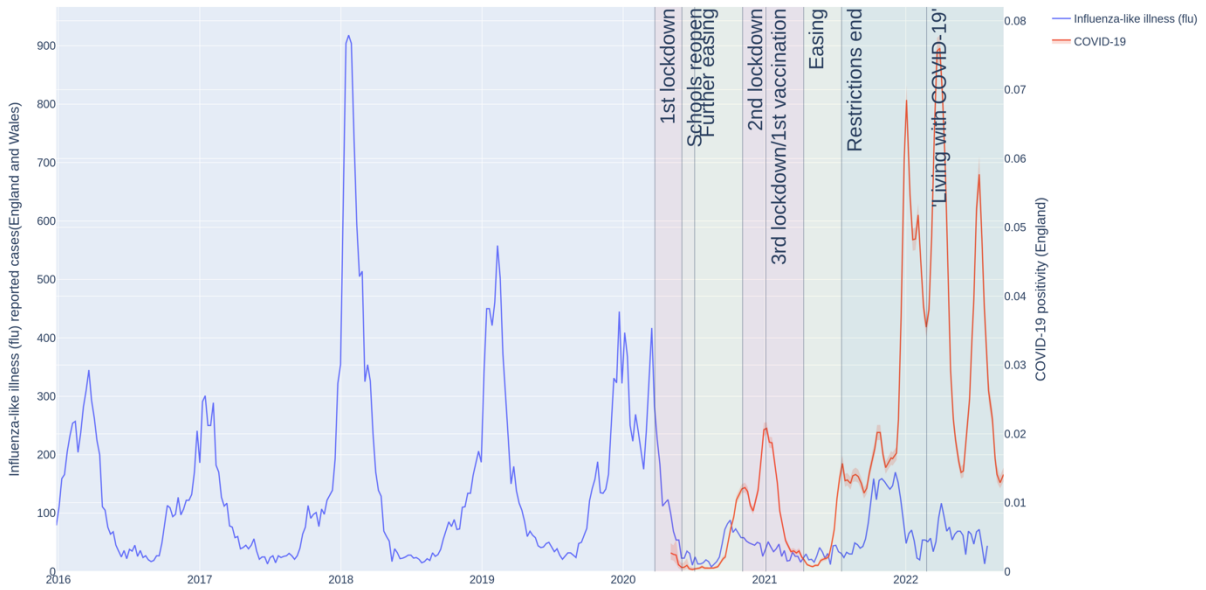
119



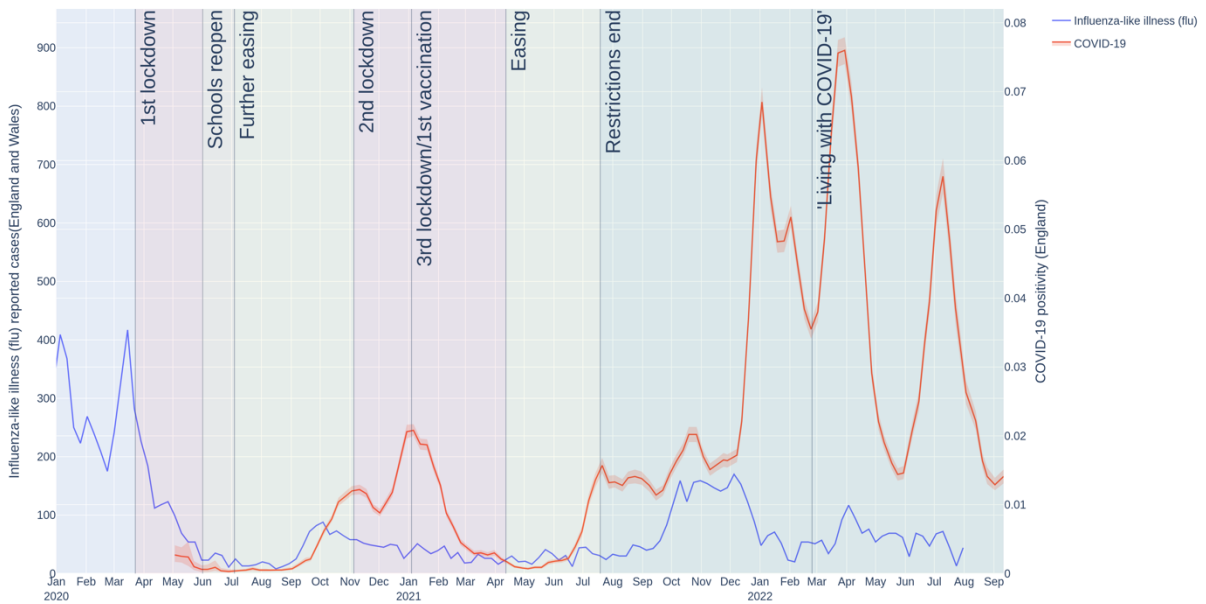
120
121
122
123
124
125
126

Suppl. Figure 1. Chickenpox case numbers during the COVID-19 pandemic in England. Weekly case numbers (chickenpox: left y-axis, blue line, COVID-19: right y-axis, orange line) starting from 1st January 2017 (top graph) or 30th December 2019 (bottom graph).

127 **Suppl. Figure 2**



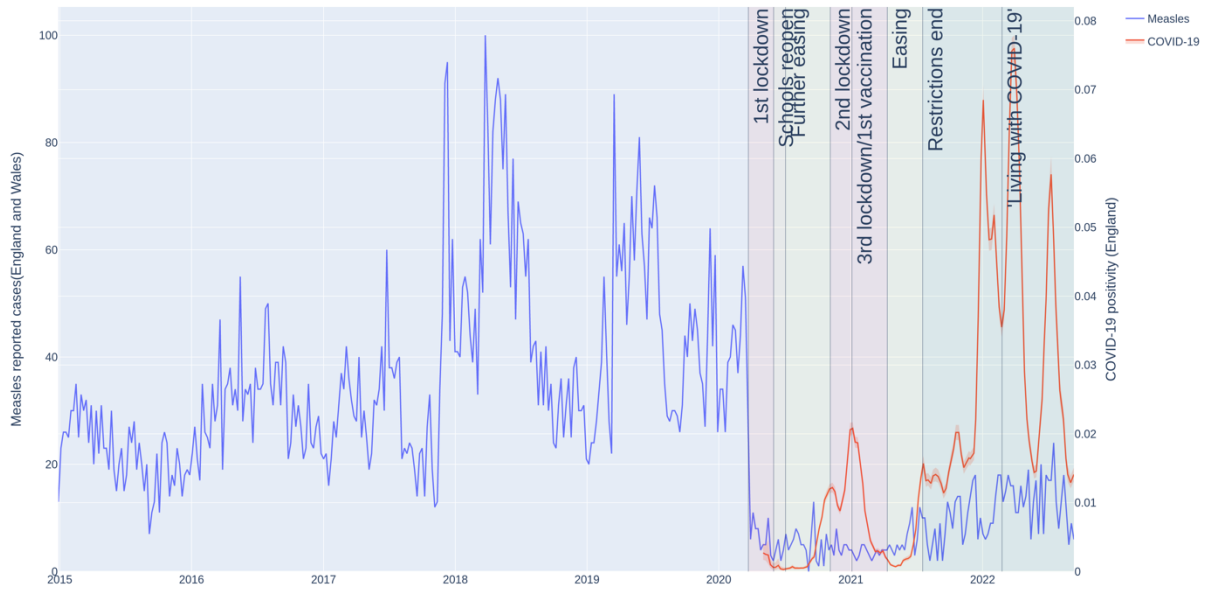
128



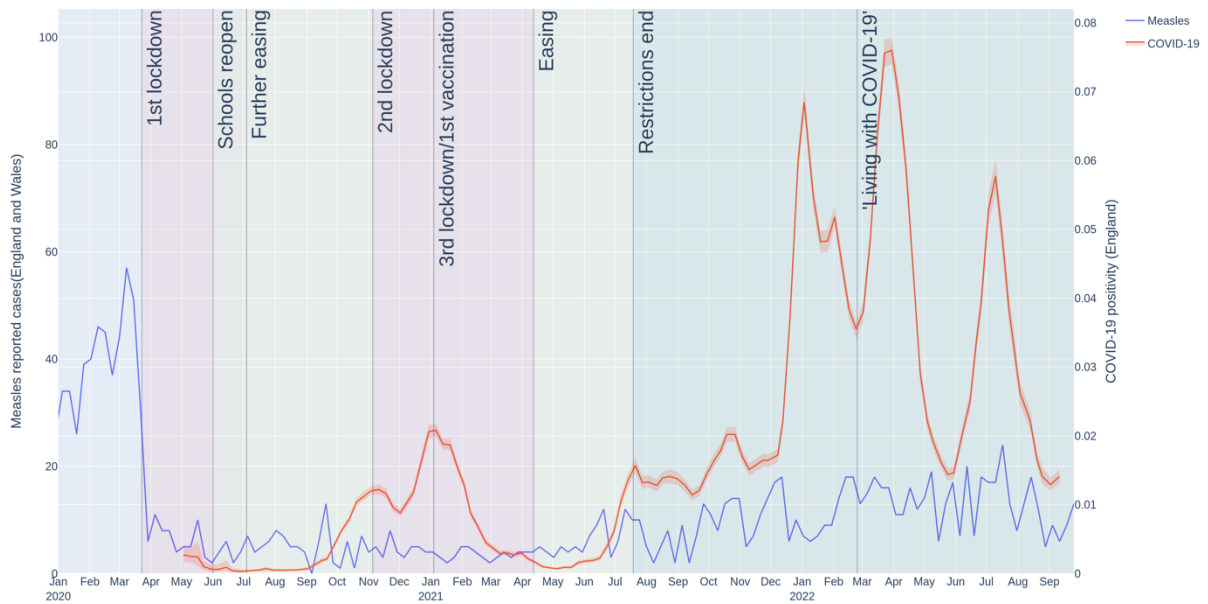
129
130
131
132
133
134
135

Suppl. Figure 2. Influenza-like illness case numbers during the COVID-19 pandemic in England. Weekly case numbers (influenza-like illnesses: left y-axis, blue line, COVID-19: right y-axis, orange line) starting from 1st January 2016 (top graph) or 30th December 2019 (bottom graph).

136 **Suppl. Figure 3**



137



138

139

140

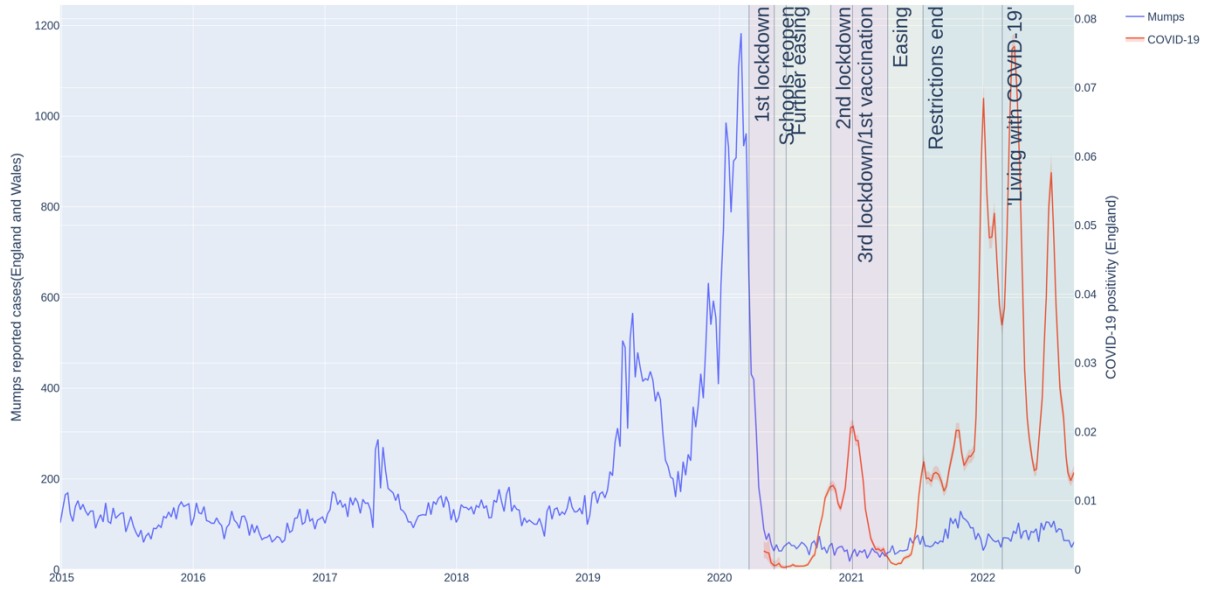
141

142

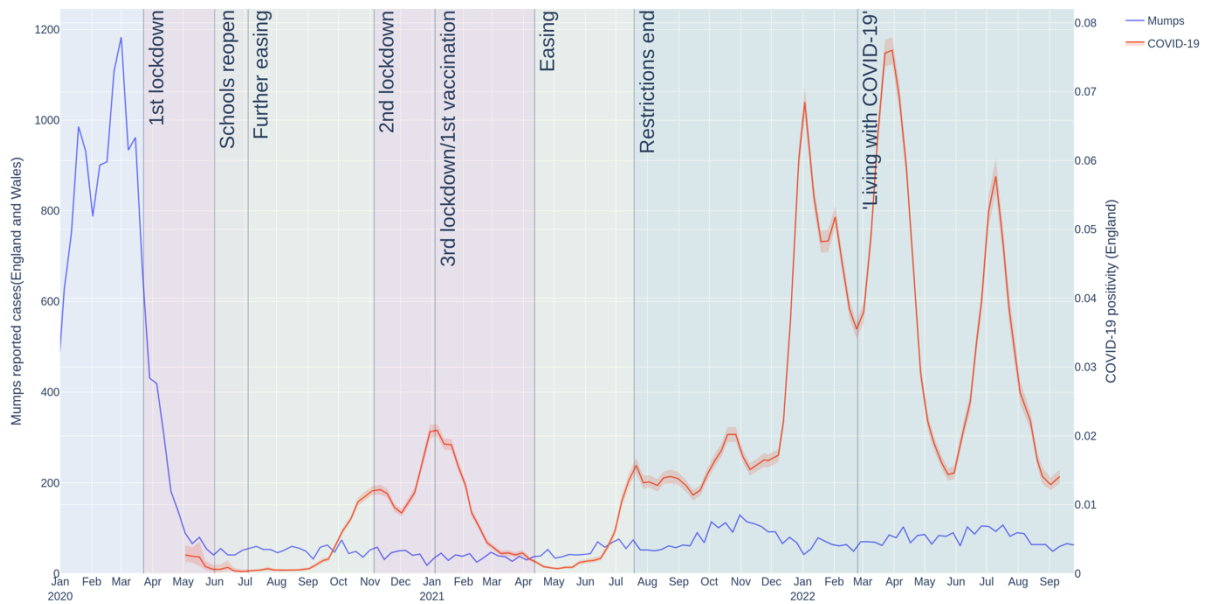
143

Suppl. Figure 3. Measles case numbers during the COVID-19 pandemic in England. Weekly case numbers (measles: left y-axis, blue line, COVID-19: right y-axis, orange line) starting from 1st January 2015 (top graph) or 30th December 2019 (bottom graph).

144 **Suppl. Figure 4**



145



146

147

148

149

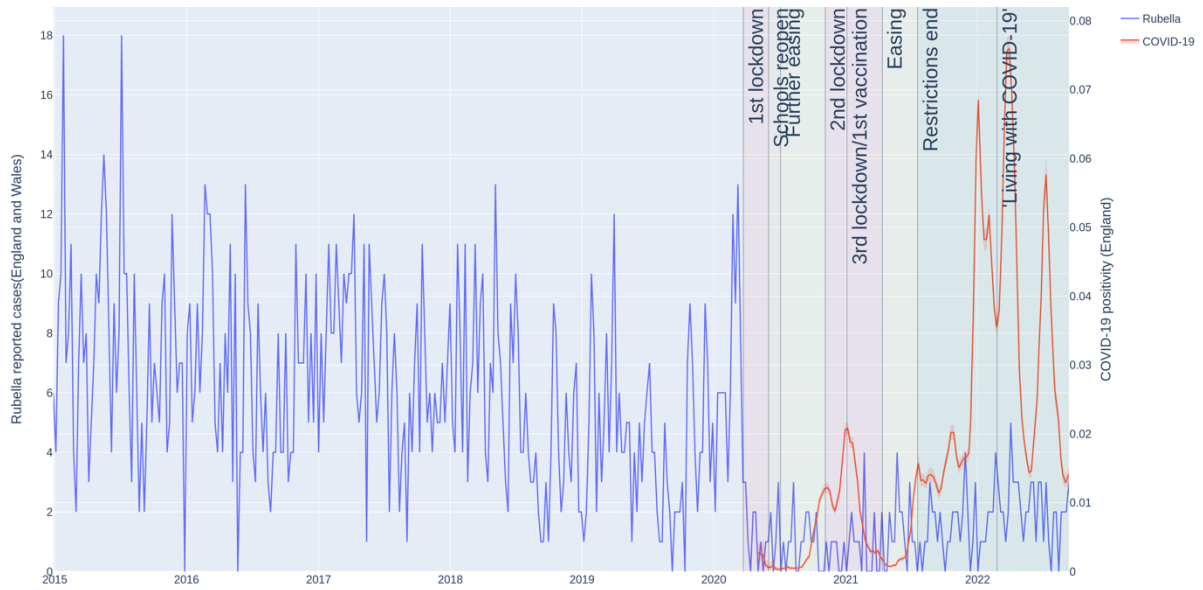
150

151

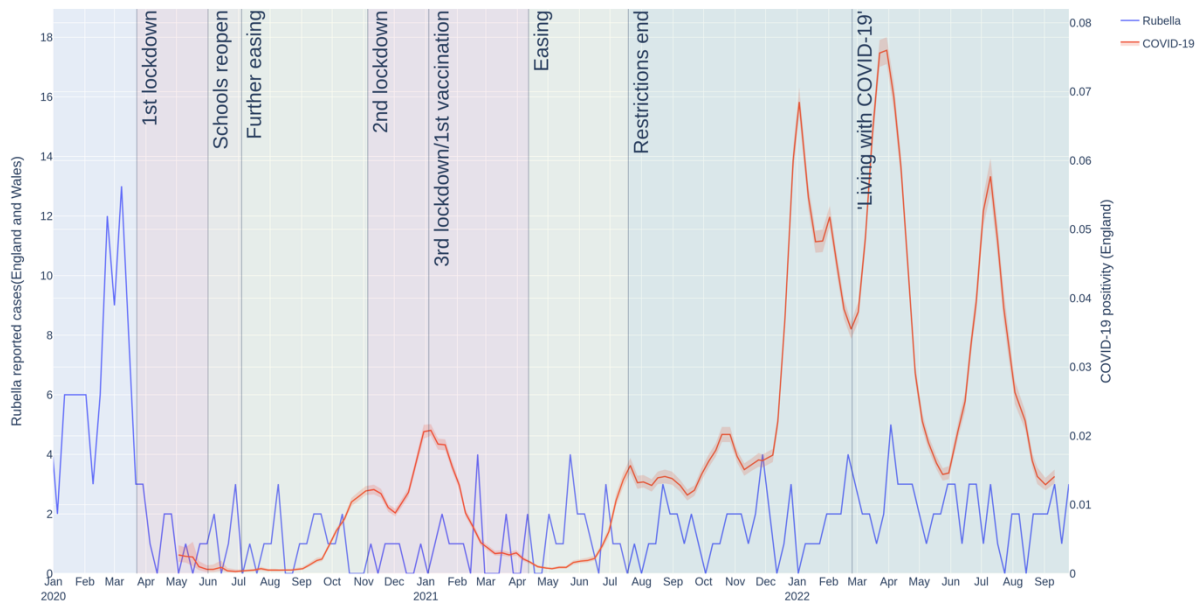
152

Suppl. Figure 4. Mumps case numbers during the COVID-19 pandemic in England. Weekly case numbers (mumps: left y-axis, blue line, COVID-19: right y-axis, orange line) starting from 1st January 2015 (top graph) or 30th December 2019 (bottom graph).

153 **Suppl. Figure 5**



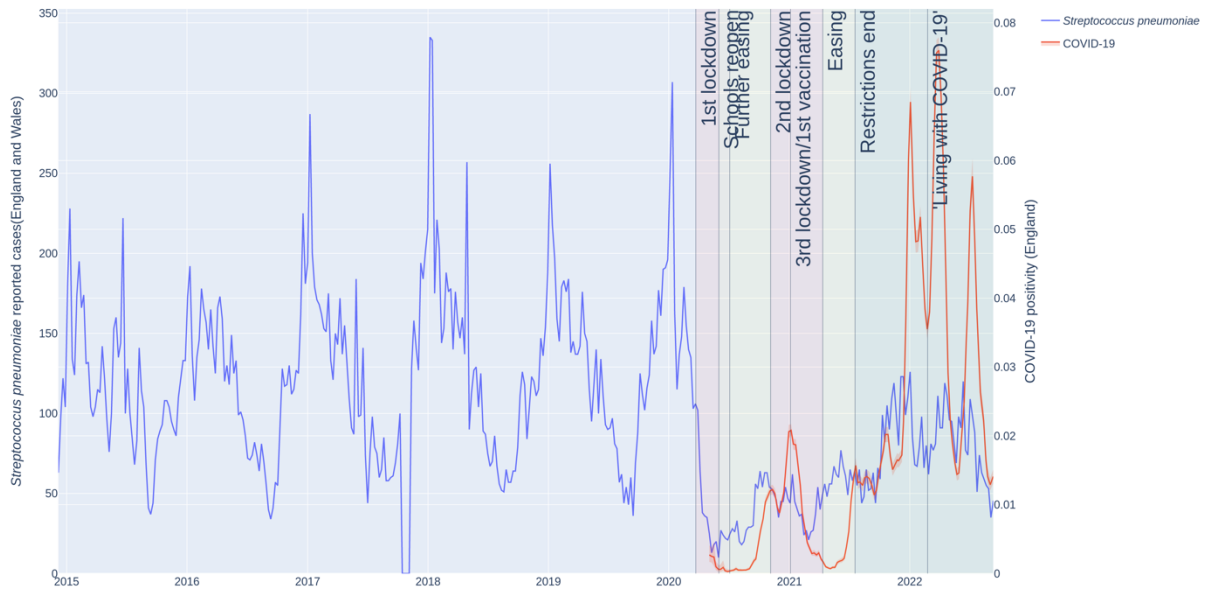
154



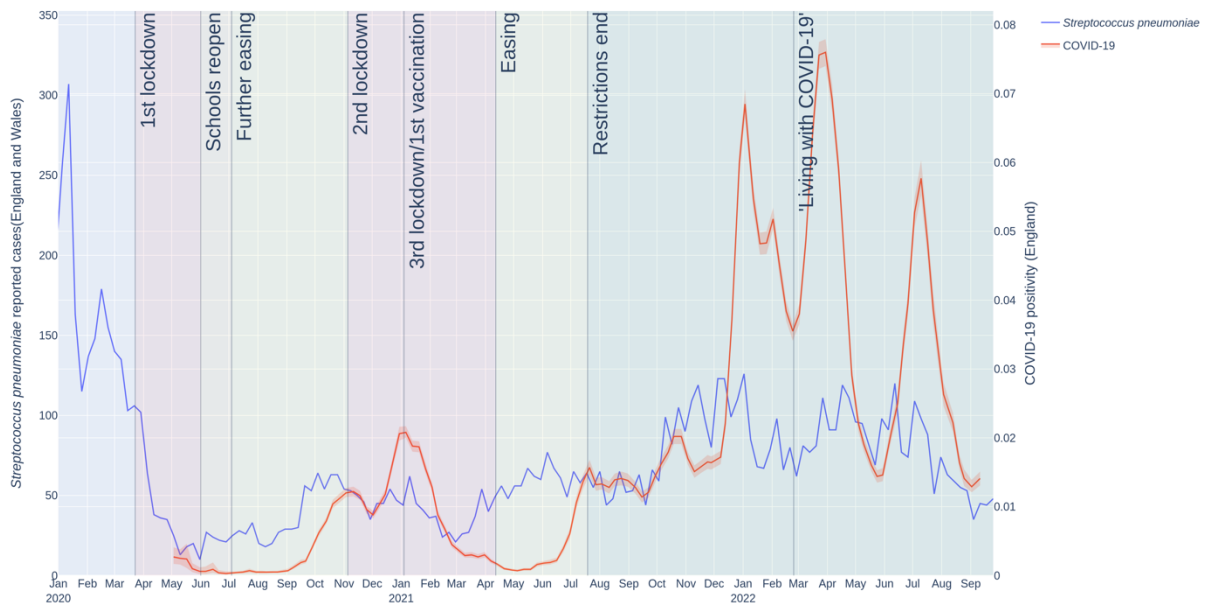
155
156
157
158
159
160
161

Suppl. Figure 5. Rubella case numbers during the COVID-19 pandemic in England. Weekly case numbers (rubella: left y-axis, blue line, COVID-19: right y-axis, orange line) starting from 1st January 2015 (top graph) or 30th December 2019 (bottom graph).

162 **Suppl. Figure 6**



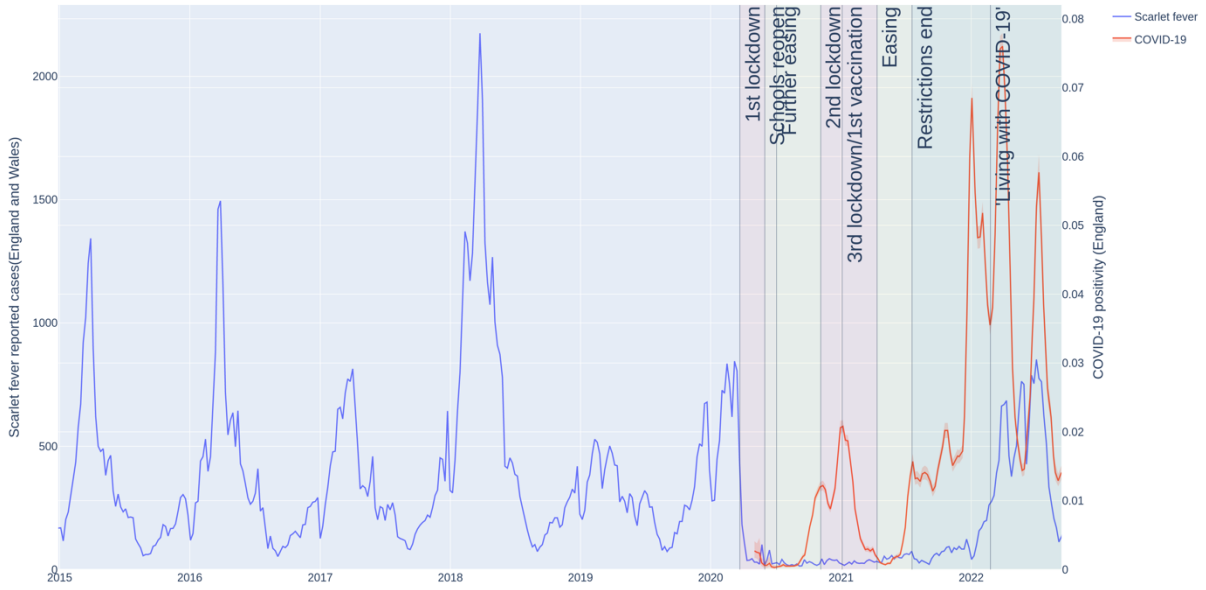
163



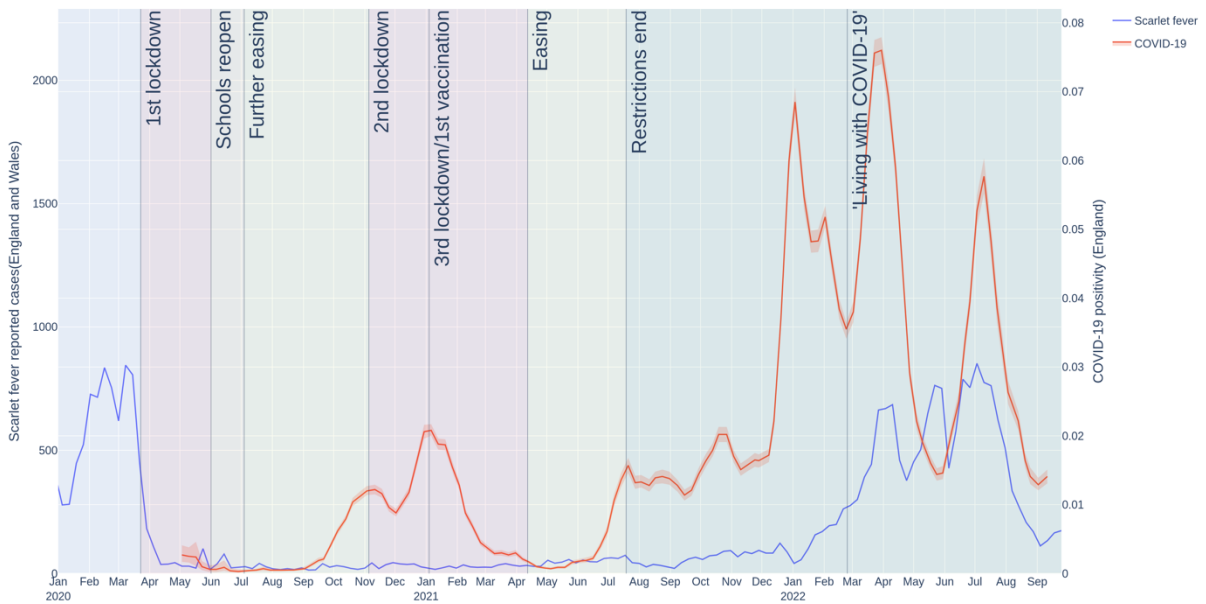
164
165
166
167
168
169
170

Suppl. Figure 6. Pneumococcal disease (*Streptococcus pneumoniae*) case numbers during the COVID-19 pandemic in England. Weekly case numbers (*Streptococcus pneumoniae*: left y-axis, blue line, COVID-19: right y-axis, orange line) starting from 1st January 2015 (top graph) or 30th December 2019 (bottom graph).

171 **Suppl. Figure 7**



172



173

174

175

176

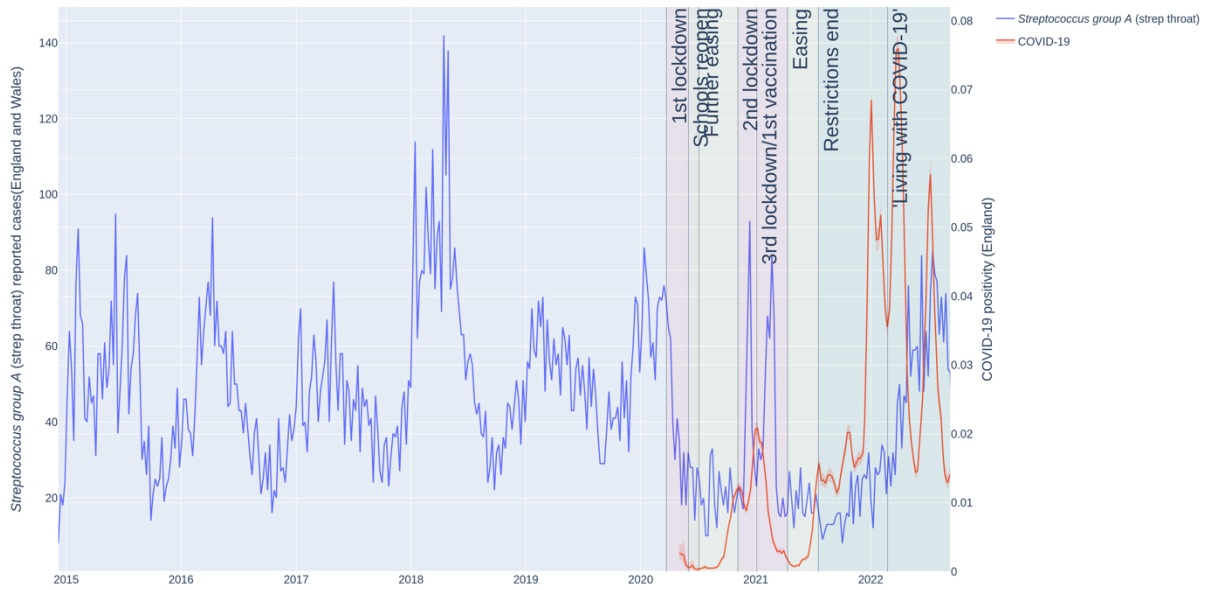
177

178

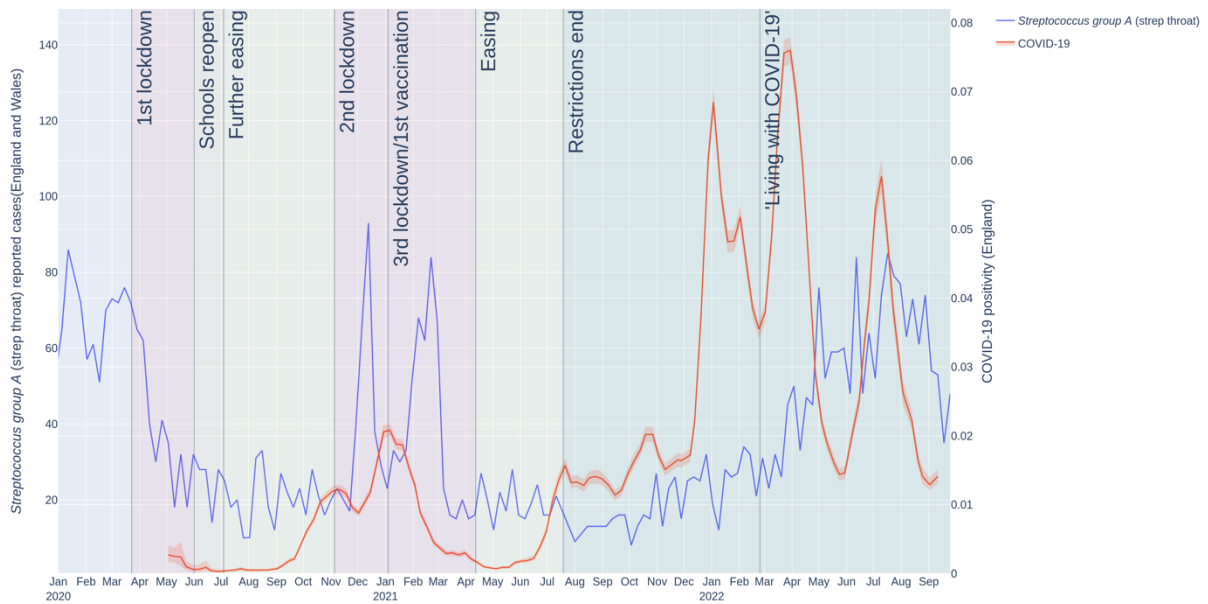
179

Suppl. Figure 7. Scarlet fever case numbers during the COVID-19 pandemic in England. Weekly case numbers (scarlet fever: left y-axis, blue line, COVID-19: right y-axis, orange line) starting from 1st January 2015 (top graph) or 30th December 2019 (bottom graph).

180 **Suppl. Figure 8**



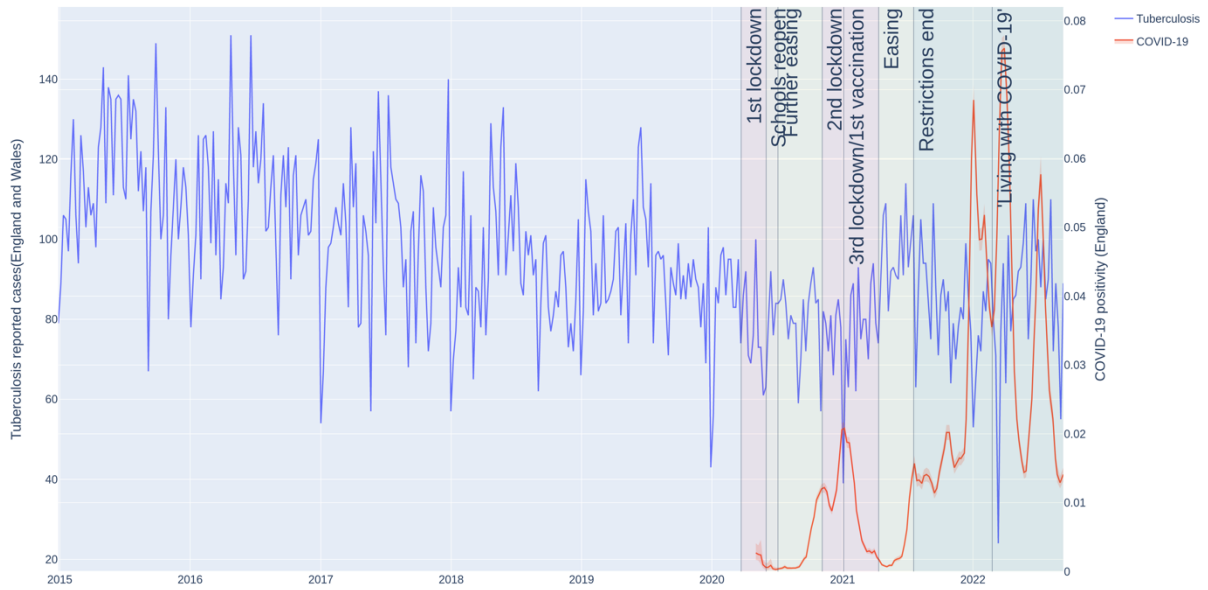
181



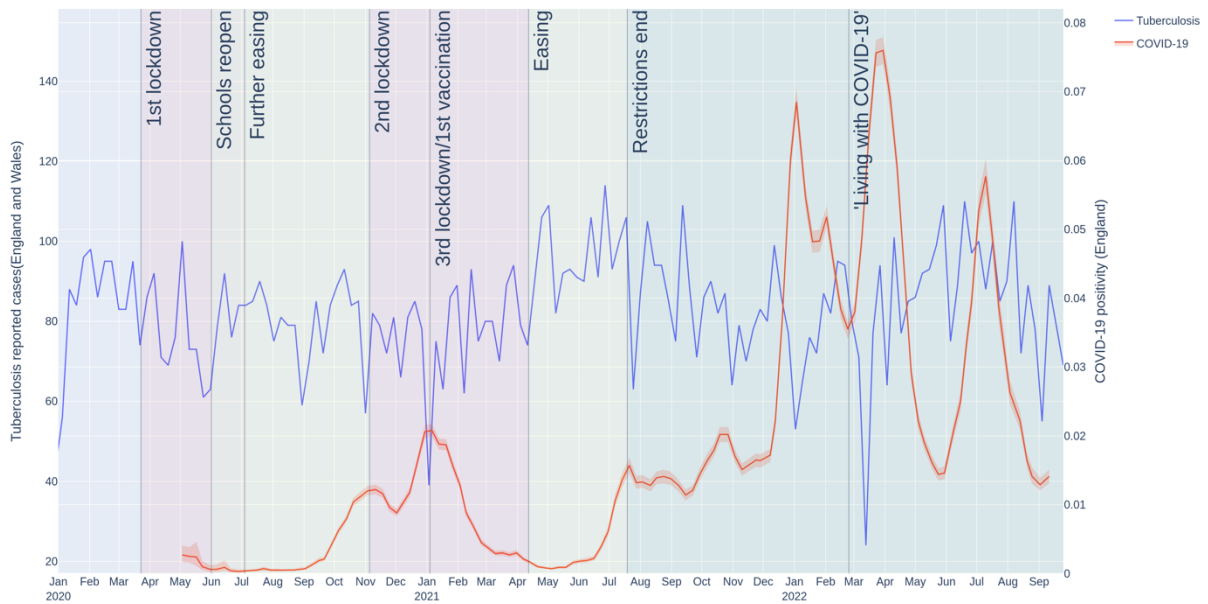
182
183
184
185
186
187
188

Suppl. Figure 8. Streptococcal pharyngitis (Streptococcus group A, strep throat) case numbers during the COVID-19 pandemic in England. Weekly case numbers (Streptococcus group A: left y-axis, blue line, COVID-19: right y-axis, orange line) starting from 1st January 2015 (top graph) or 30th December 2019 (bottom graph).

189 **Suppl. Figure 9**



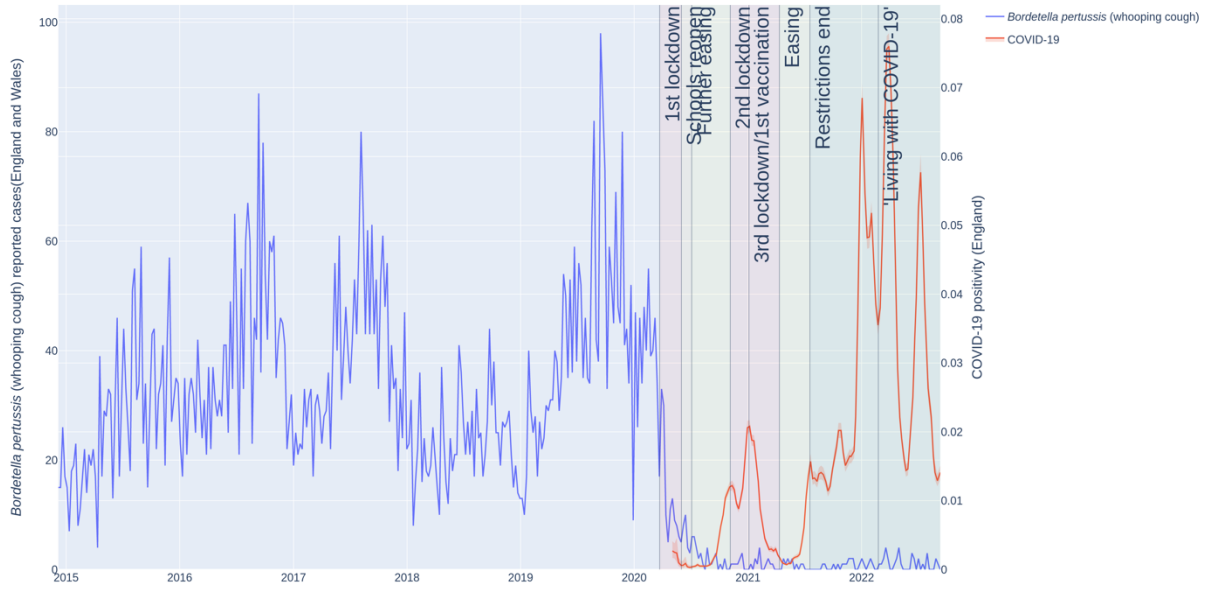
190



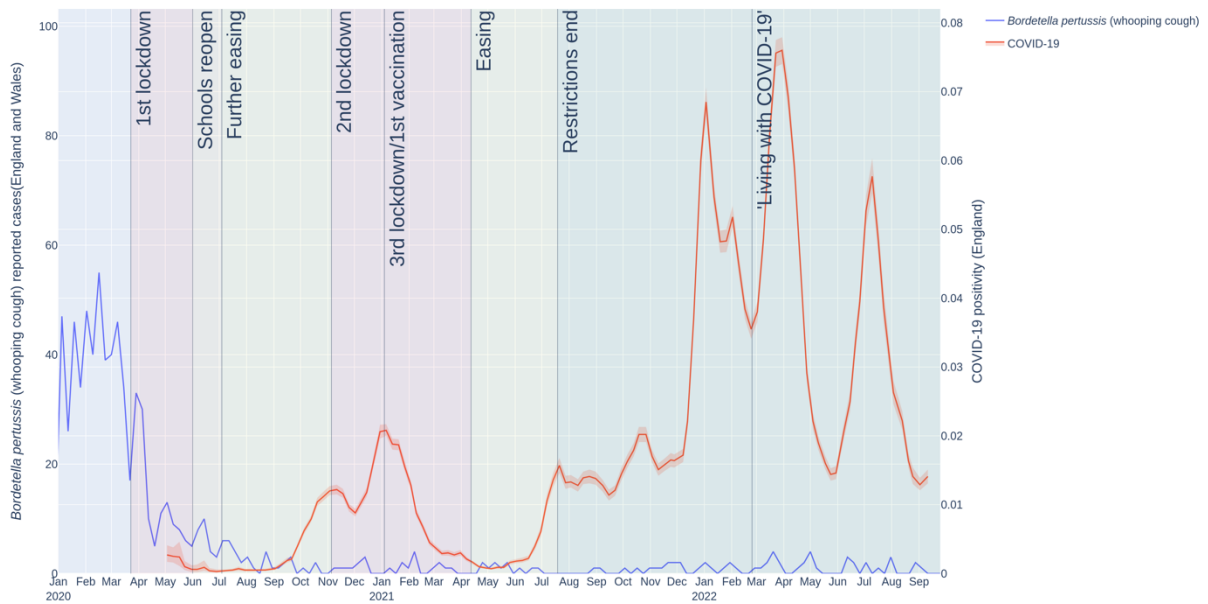
191
192
193
194
195
196
197

Suppl. Figure 9. Tuberculosis case numbers during the COVID-19 pandemic in England. Weekly case numbers (tuberculosis: left y-axis, blue line, COVID-19: right y-axis, orange line) starting from 1st January 2015 (top graph) or 30th December 2019 (bottom graph).

198 **Suppl. Figure 10**



199



200

201

202

203

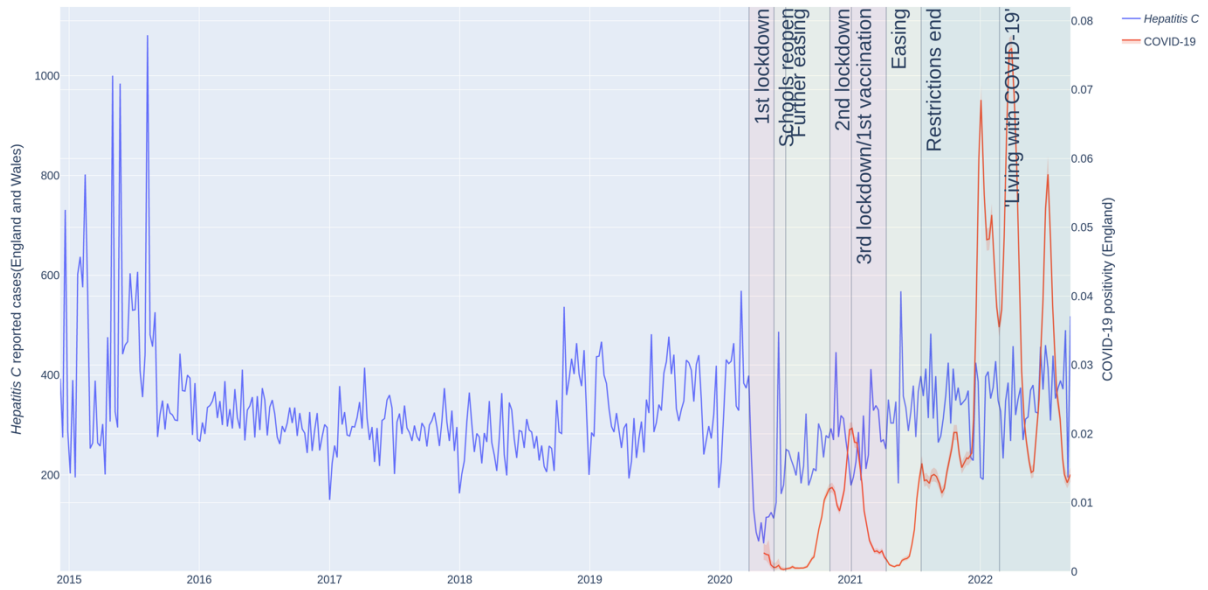
204

205

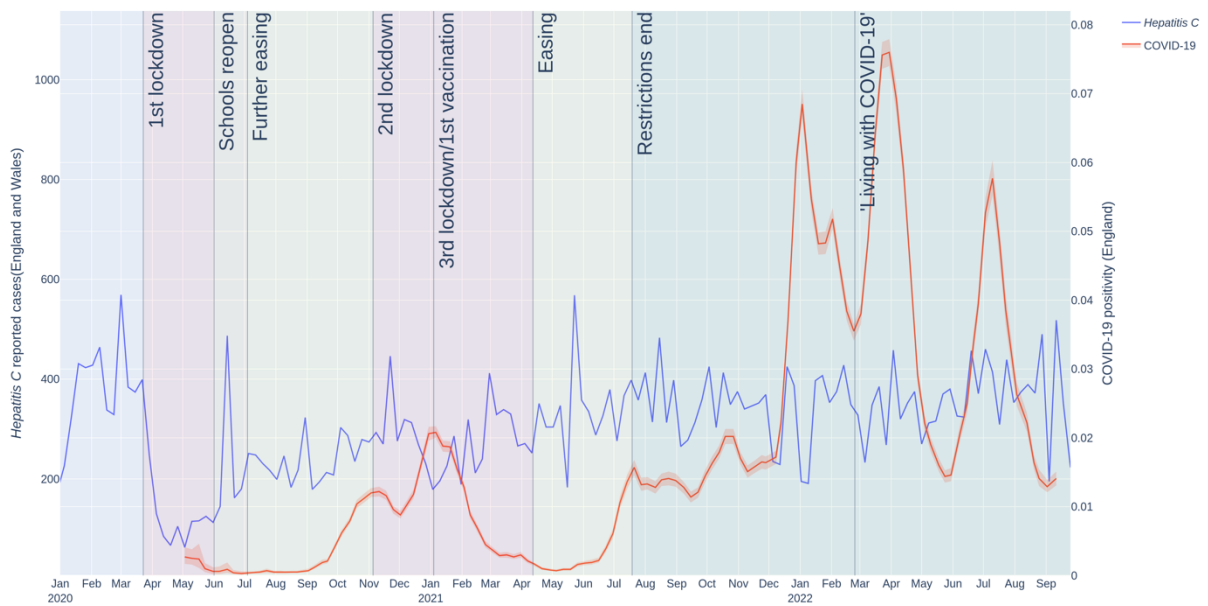
206

Suppl. Figure 10. Pertussis (*Bordetella pertussis*, whooping cough) case numbers during the COVID-19 pandemic in England. Weekly case numbers (pertussis: left y-axis, blue line, COVID-19: right y-axis, orange line) starting from 1st January 2015 (top graph) or 30th December 2019 (bottom graph).

207 **Suppl. Figure 11**



208



209

210

211

212

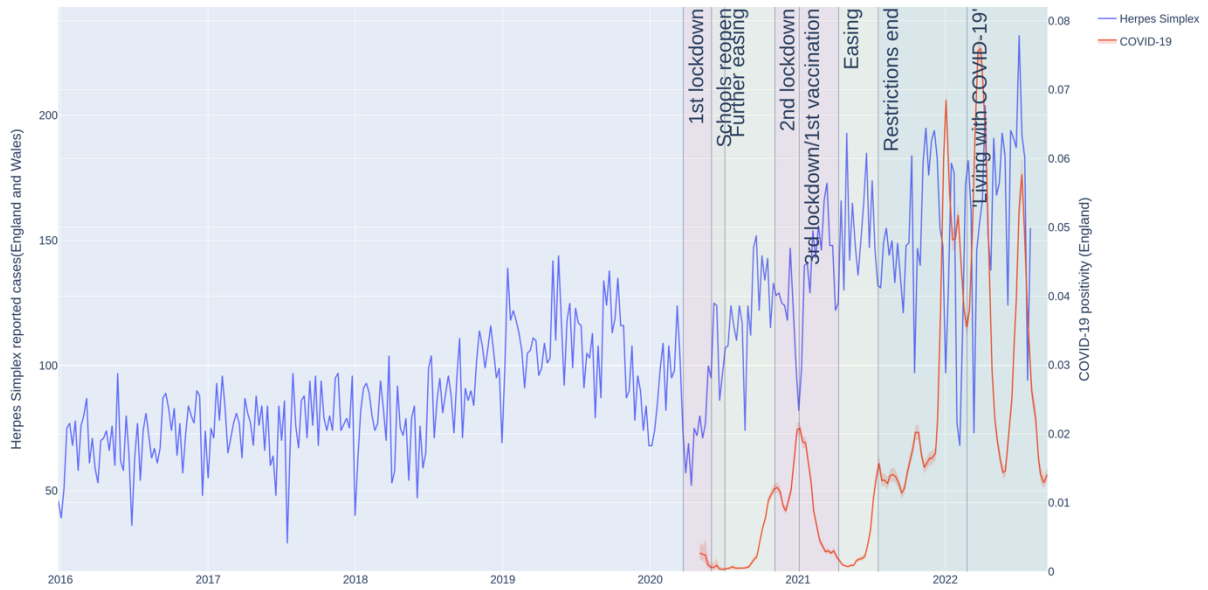
213

214

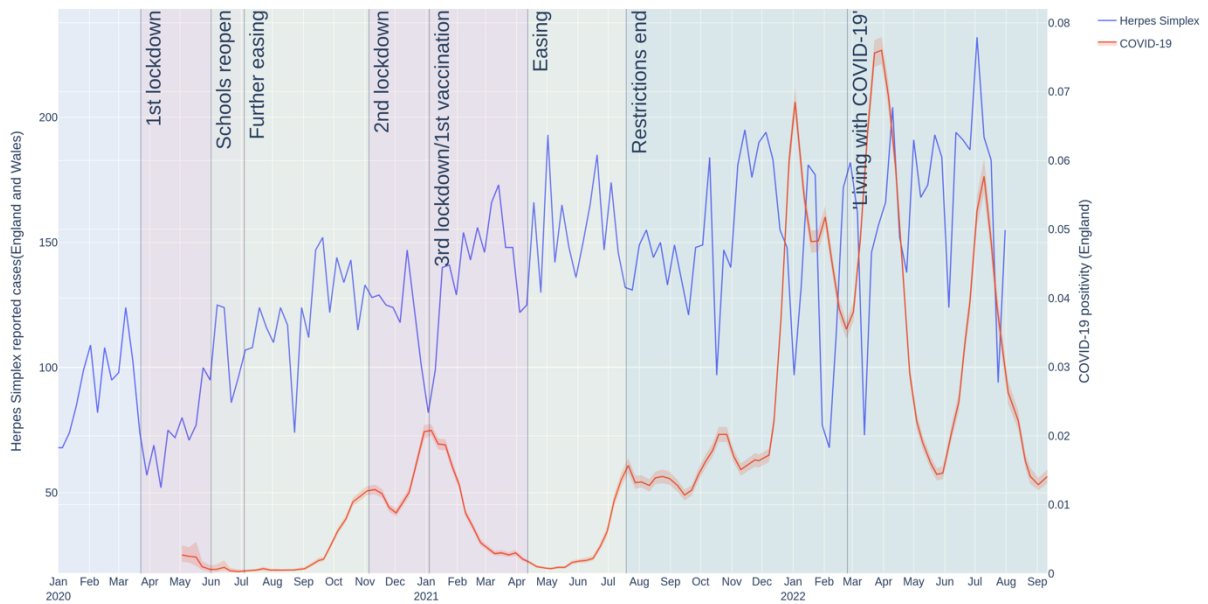
215

Suppl. Figure 11. Hepatitis C case numbers during the COVID-19 pandemic in England. Weekly case numbers (hepatitis C: left y-axis, blue line, COVID-19: right y-axis, orange line) starting from 1st January 2015 (top graph) or 30th December 2019 (bottom graph).

216 **Suppl. Figure 12**



217



218

219

220

221

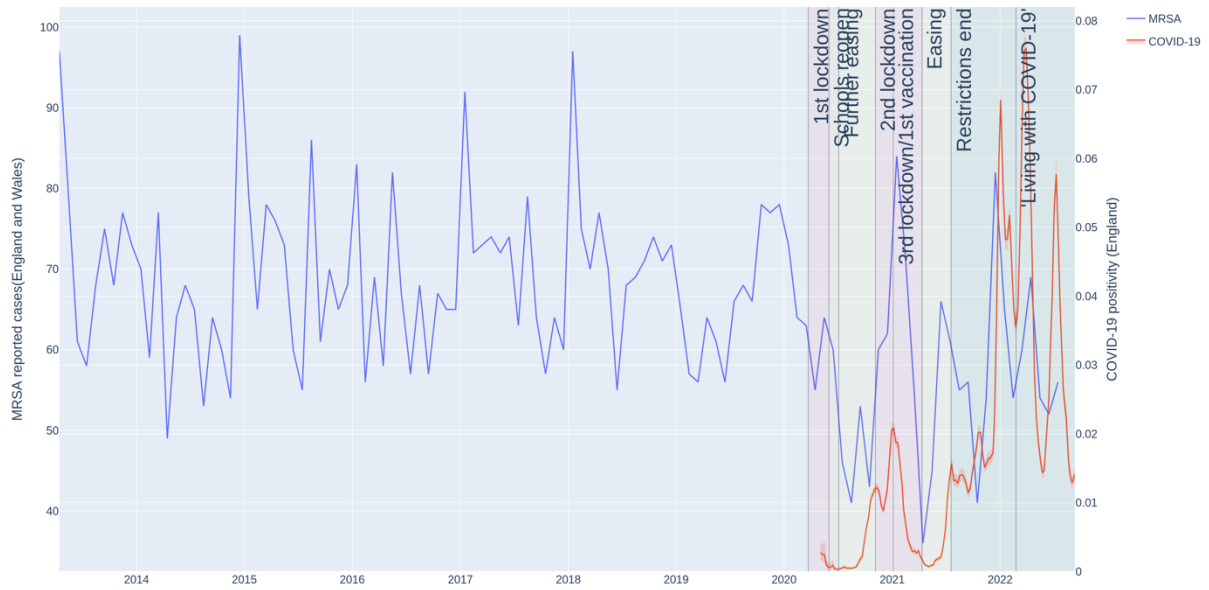
222

223

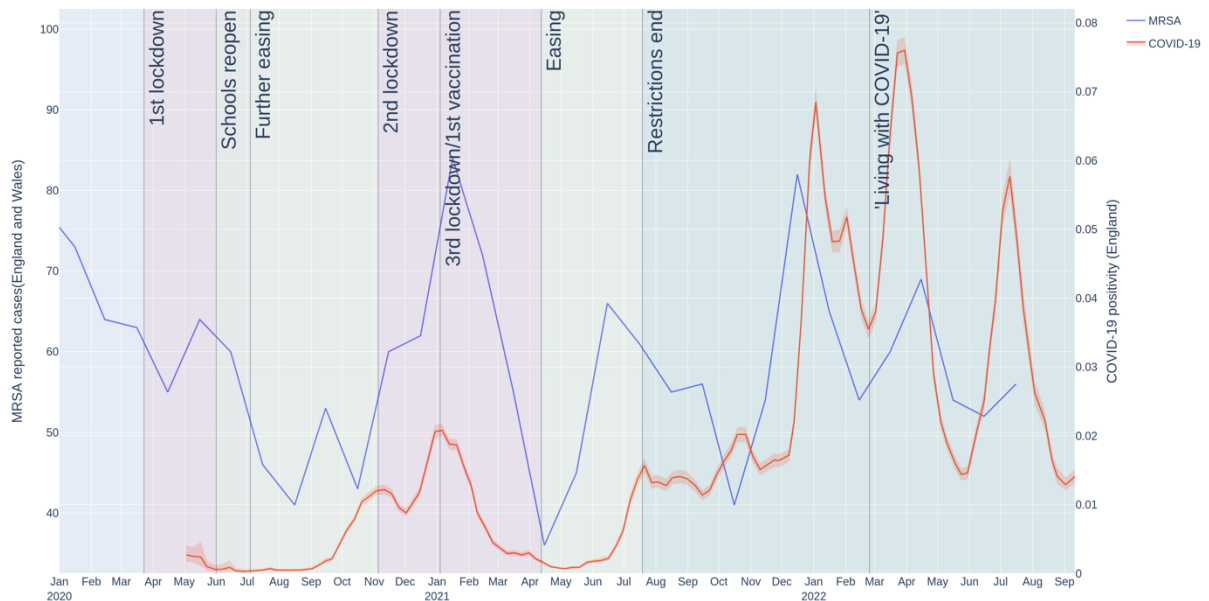
224

Suppl. Figure 12. Herpes simplex virus case numbers during the COVID-19 pandemic in England. Weekly case numbers (herpes simplex virus: left y-axis, blue line, COVID-19: right y-axis, orange line) starting from 1st January 2016 (top graph) or 30th December 2019 (bottom graph).

225 **Suppl. Figure 13**



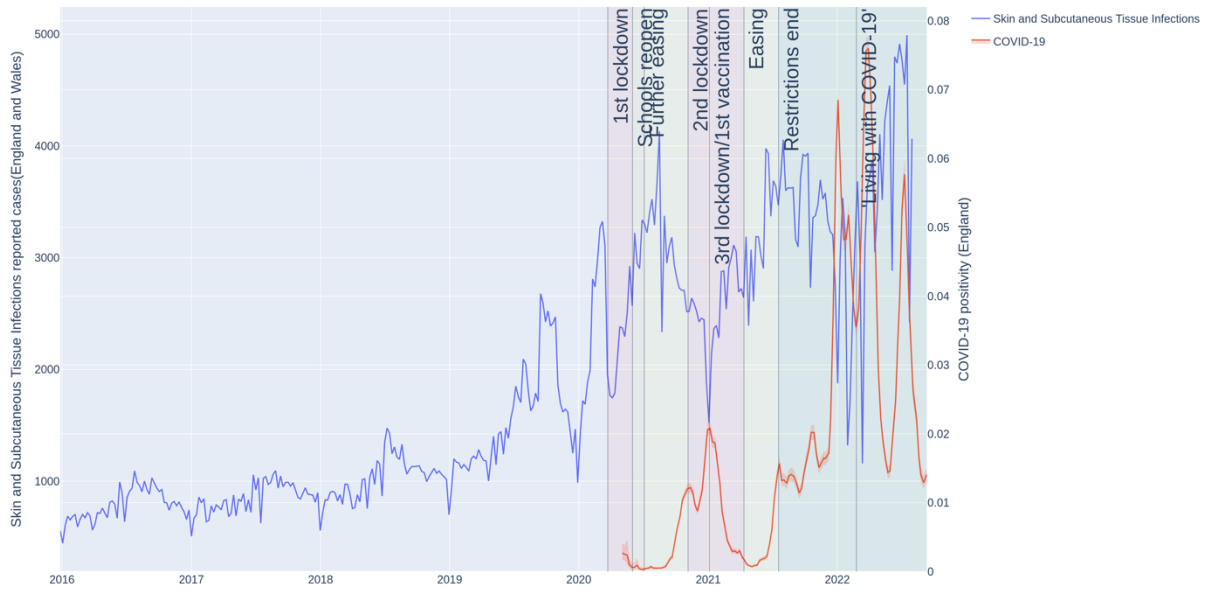
226



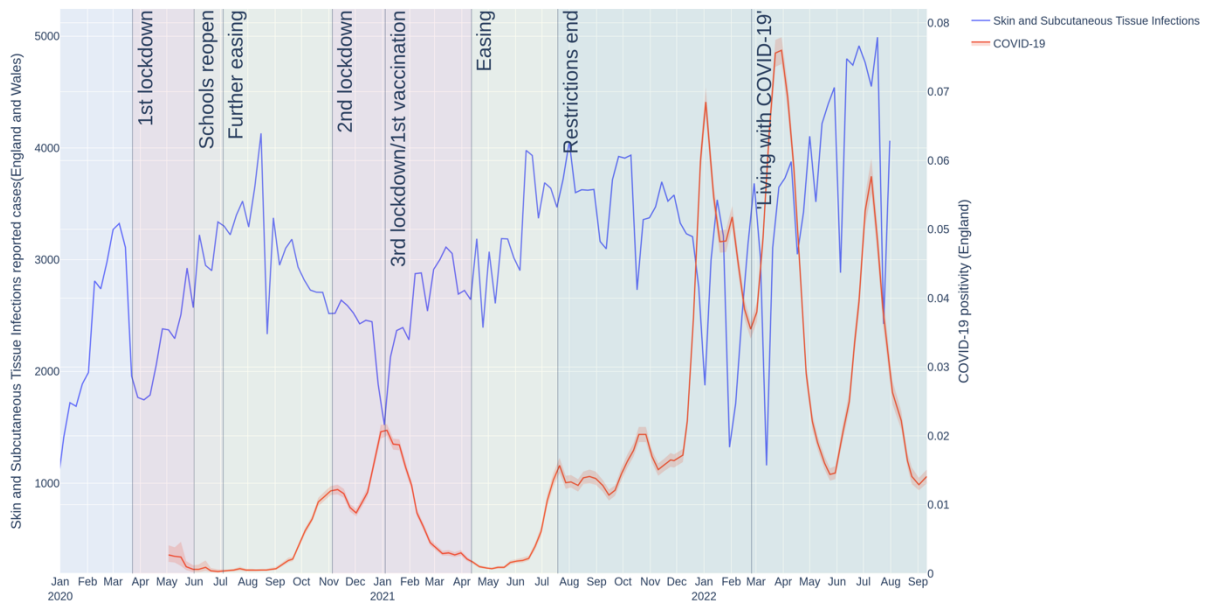
227
228
229
230
231
232
233

Suppl. Figure 13. Methicillin-resistant *Staphylococcus aureus* (MRSA) case numbers during the COVID-19 pandemic in England. Weekly case numbers (MRSA: left y-axis, blue line, COVID-19: right y-axis, orange line) starting from 1st January 2017 (top graph) or 30th December 2019 (bottom graph).

234 **Suppl. Figure 14**



235



236

237

238

239

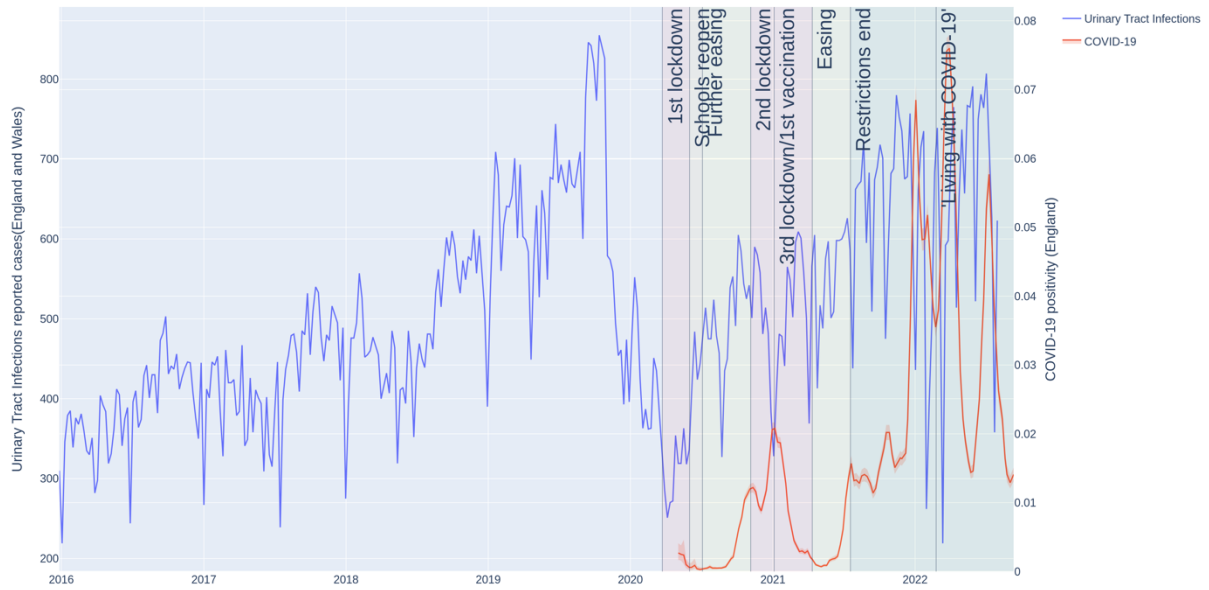
240

241

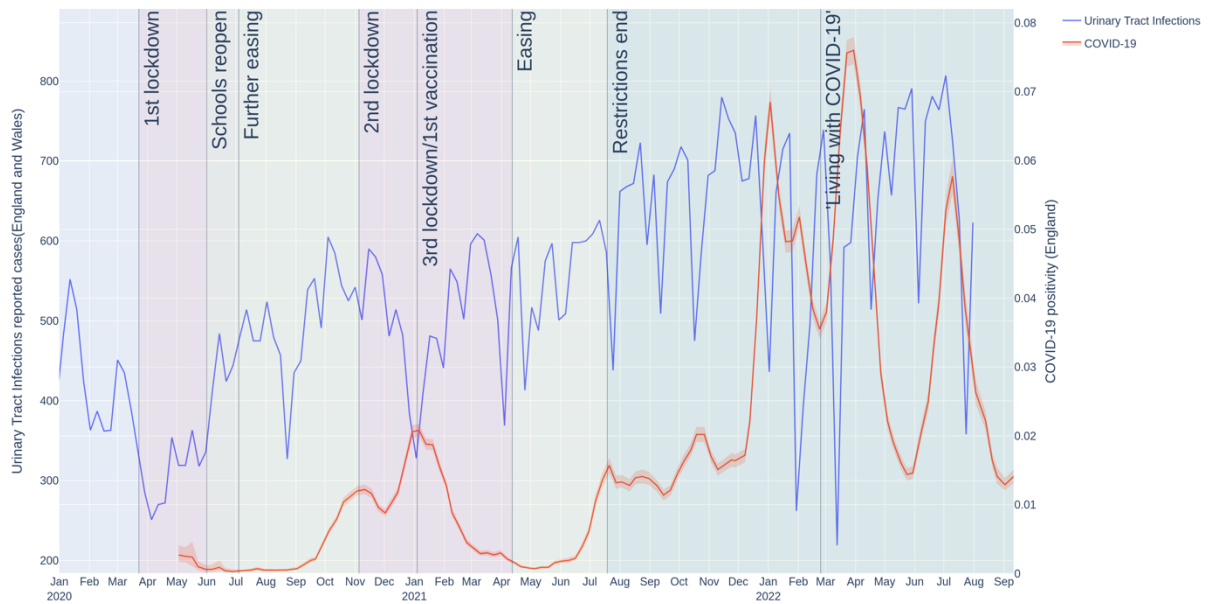
242

Suppl. Figure 14. Skin and Subcutaneous Tissue Infections case numbers during the COVID-19 pandemic in England. Weekly case numbers (Skin and Subcutaneous Tissue Infections: left y-axis, blue line, COVID-19: right y-axis, orange line) starting from 1st January 2016 (top graph) or 30th December 2019 (bottom graph).

243 **Suppl. Figure 15**



244



245

246

247

248

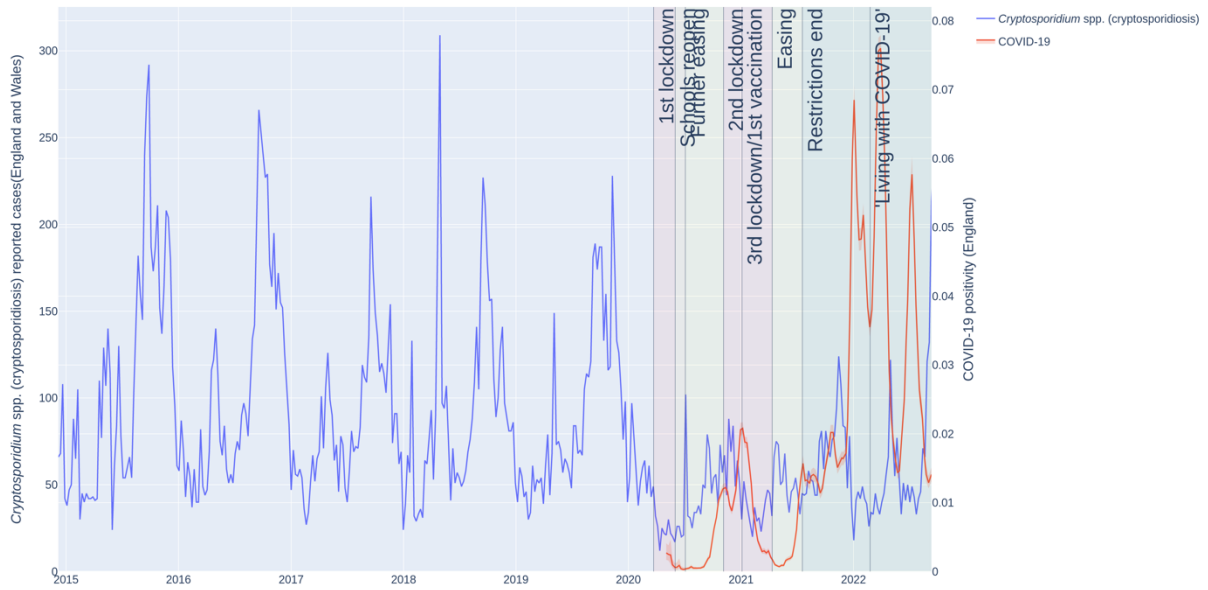
249

250

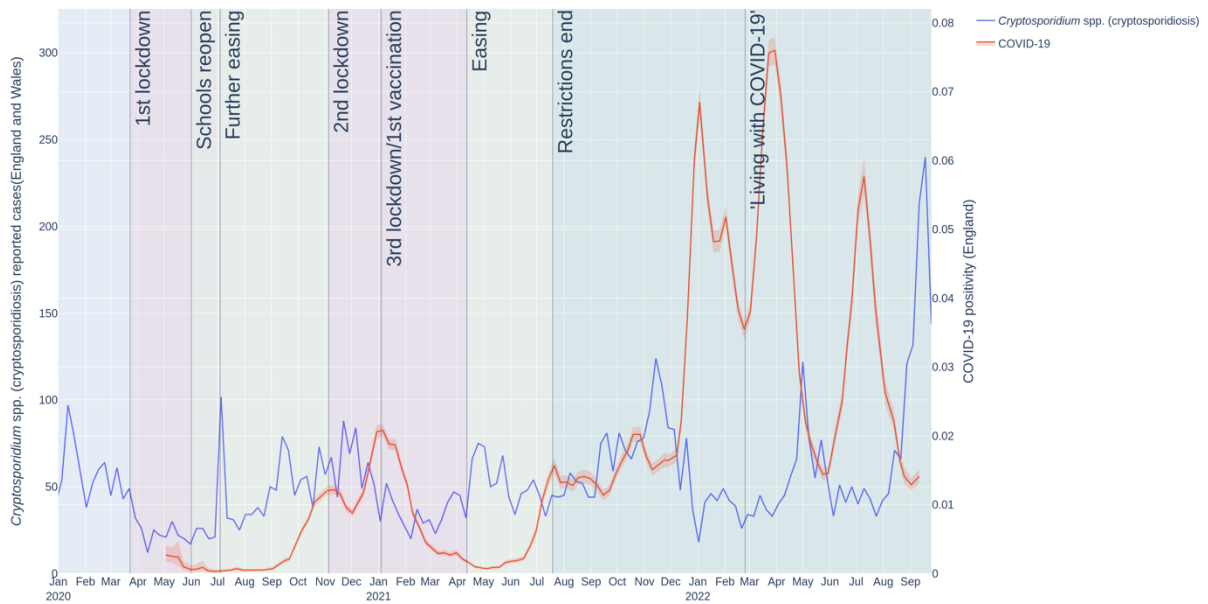
251

Suppl. Figure 15. Urinary tract infection case numbers during the COVID-19 pandemic in England. Weekly case numbers (Urinary tract infections: left y-axis, blue line, COVID-19: right y-axis, orange line) starting from 1st January 2016 (top graph) or 30th December 2019 (bottom graph).

252 **Suppl. Figure 16**



253



254

255

256

257

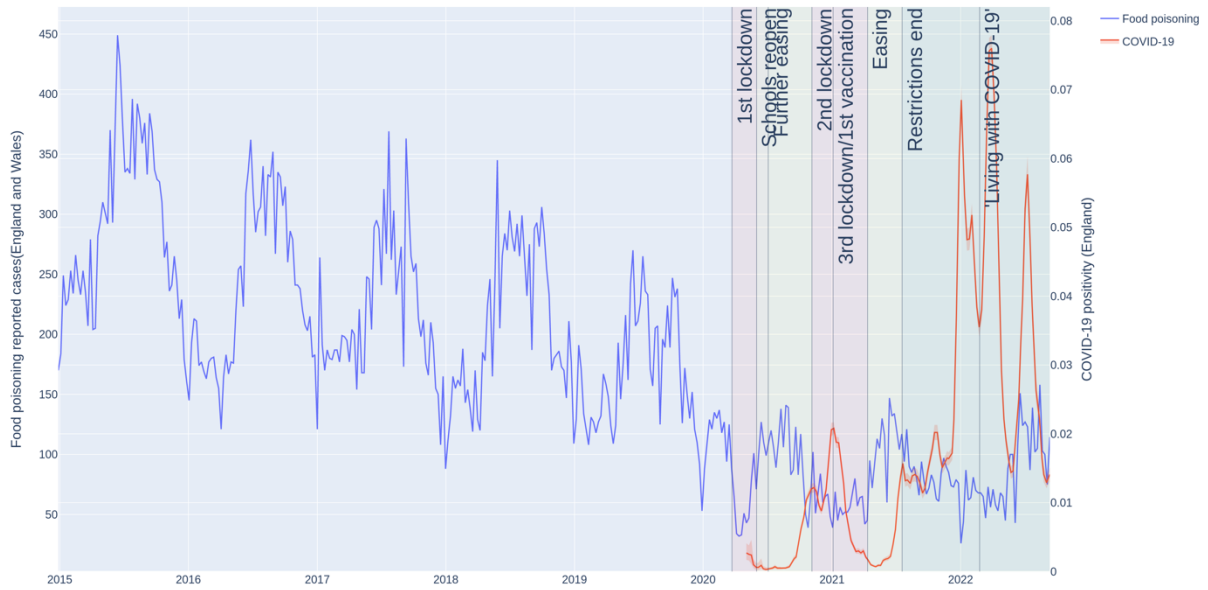
258

259

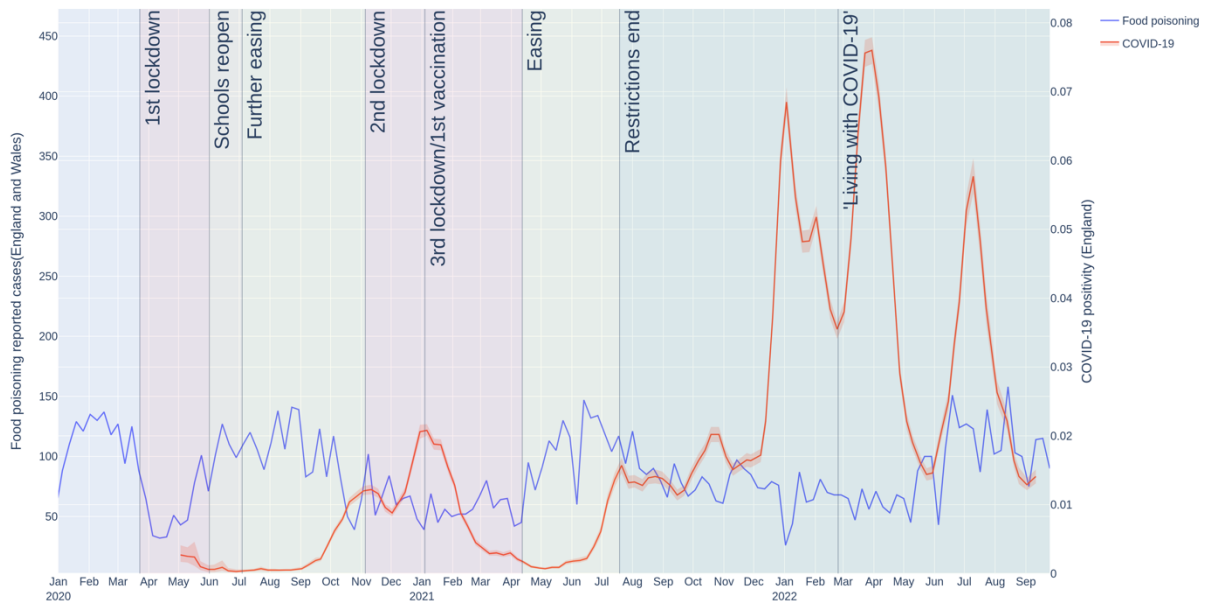
260

Suppl. Figure 16. Cryptosporidiosis (*Cryptosporidium* spp.) case numbers during the COVID-19 pandemic in England. Weekly case numbers (*Cryptosporidium* spp.: left y-axis, blue line, COVID-19: right y-axis, orange line) starting from 1st January 2015 (top graph) or 30th December 2019 (bottom graph).

261 **Suppl. Figure 17**



262



263

264

265

266

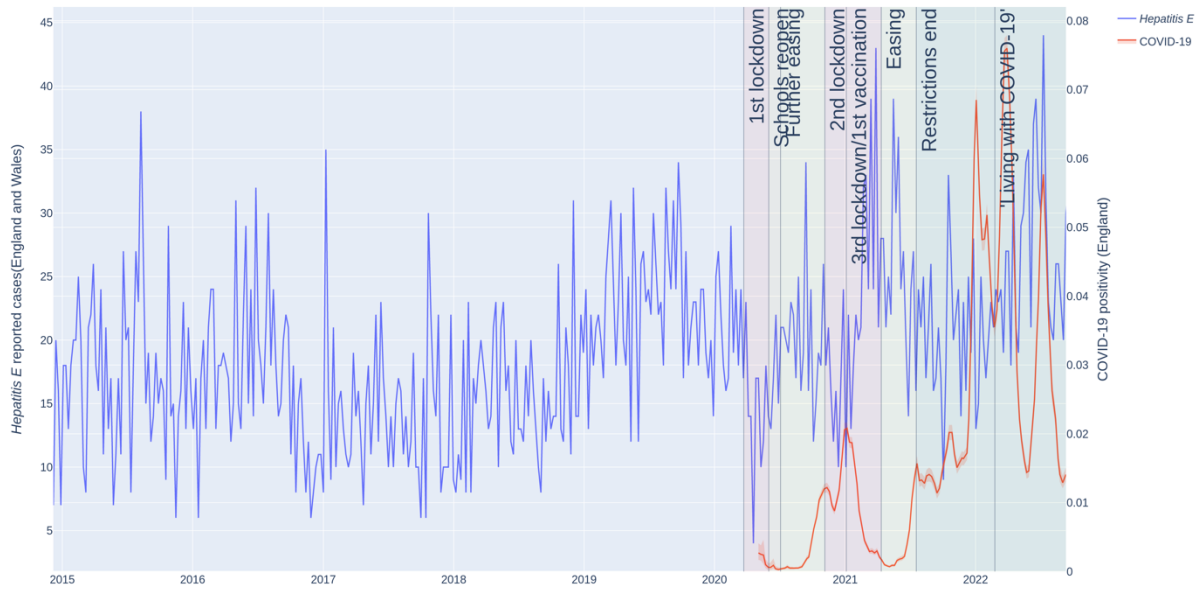
267

268

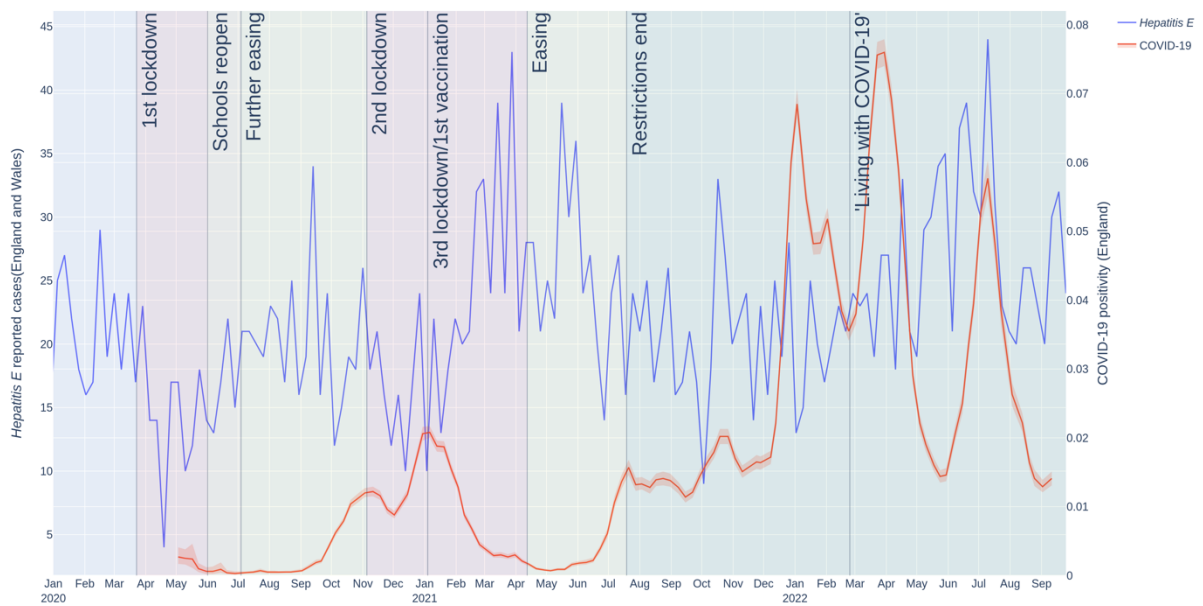
269

Suppl. Figure 17. Foodborne illness (Food poisoning) case numbers during the COVID-19 pandemic in England. Weekly case numbers (Food poisoning: left y-axis, blue line, COVID-19: right y-axis, orange line) starting from 1st January 2015 (top graph) or 30th December 2019 (bottom graph).

270 **Suppl. Figure 18**



271



272

273

274

275

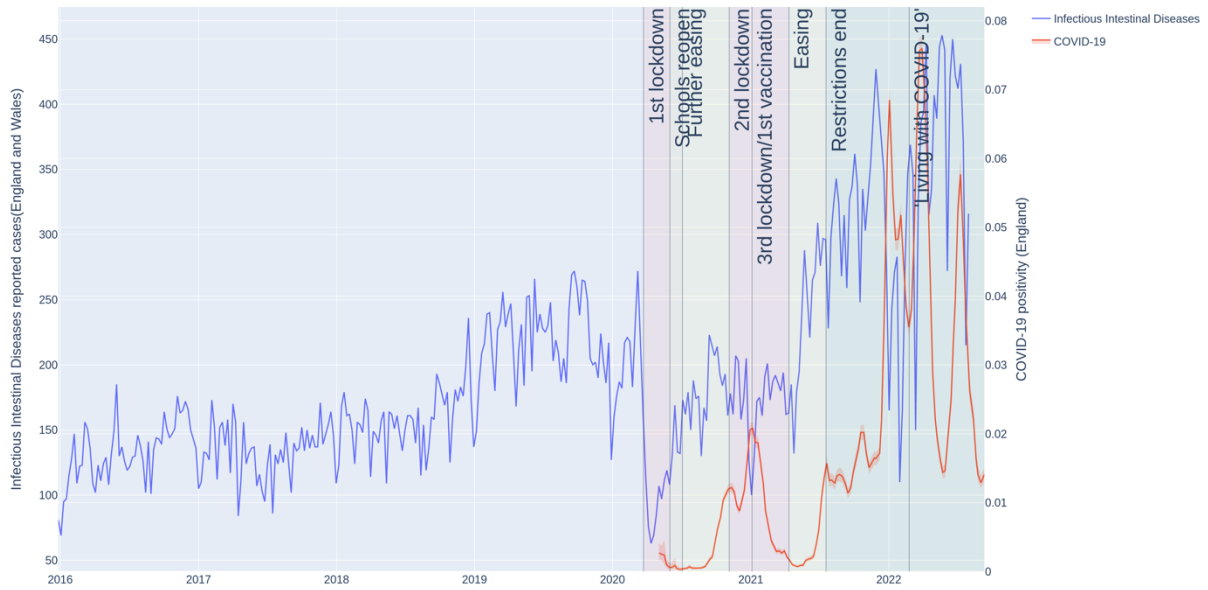
276

277

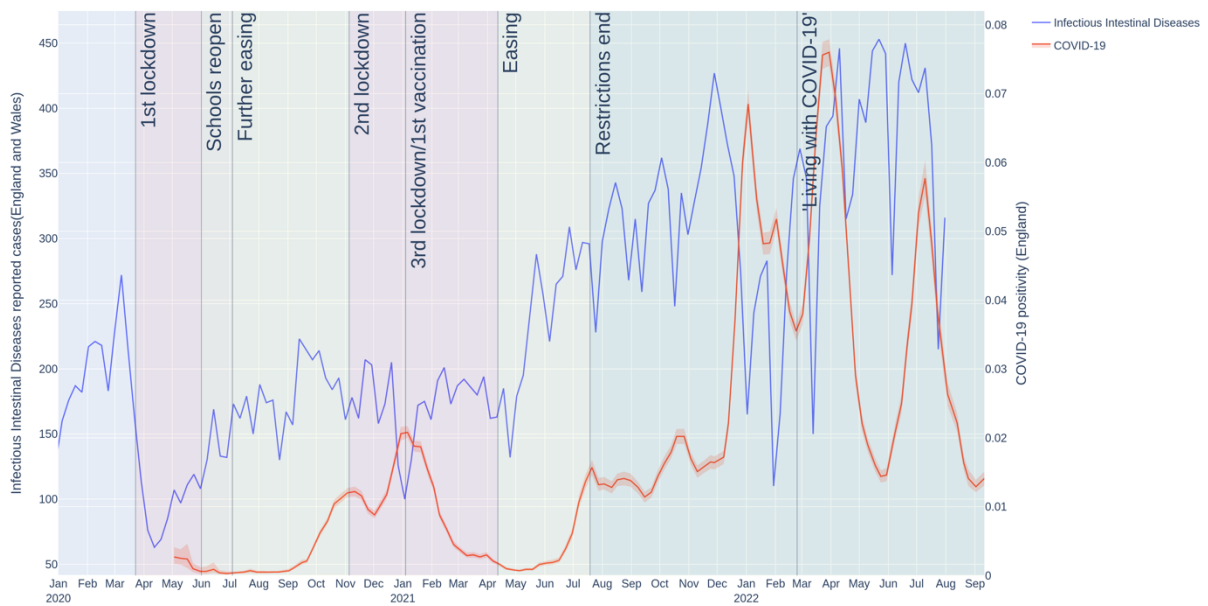
278

Suppl. Figure 18. Hepatitis E case numbers during the COVID-19 pandemic in England. Weekly case numbers (hepatitis E: left y-axis, blue line, COVID-19: right y-axis, orange line) starting from 1st January 2015 (top graph) or 30th December 2019 (bottom graph).

279 **Suppl. Figure 19**



280



281

282

283

284

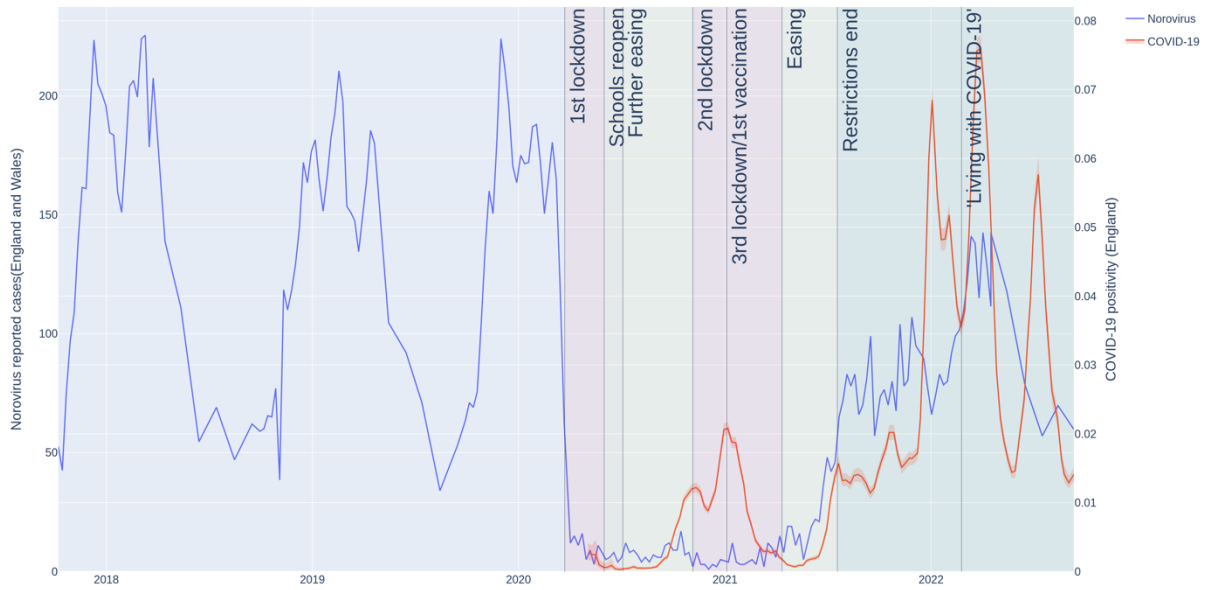
285

286

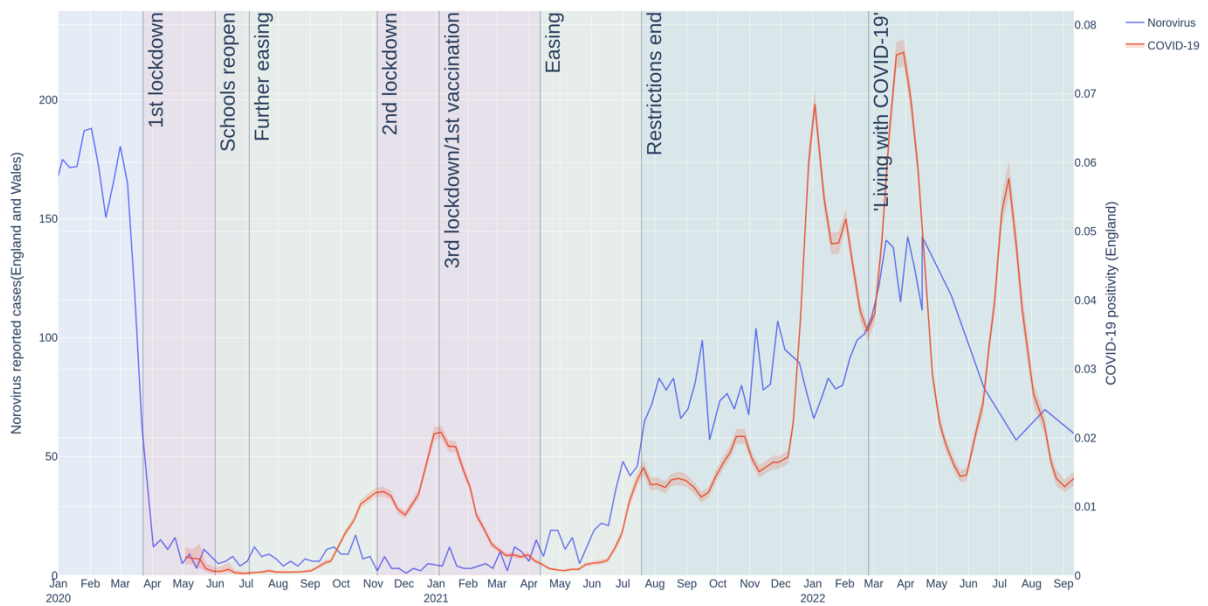
287

Suppl. Figure 19. Infectious intestinal disease case numbers during the COVID-19 pandemic in England. Weekly case numbers (Infectious intestinal disease: left y-axis, blue line, COVID-19: right y-axis, orange line) starting from 1st January 2016 (top graph) or 30th December 2019 (bottom graph).

288 **Suppl. Figure 20**



289



290

291

292

293

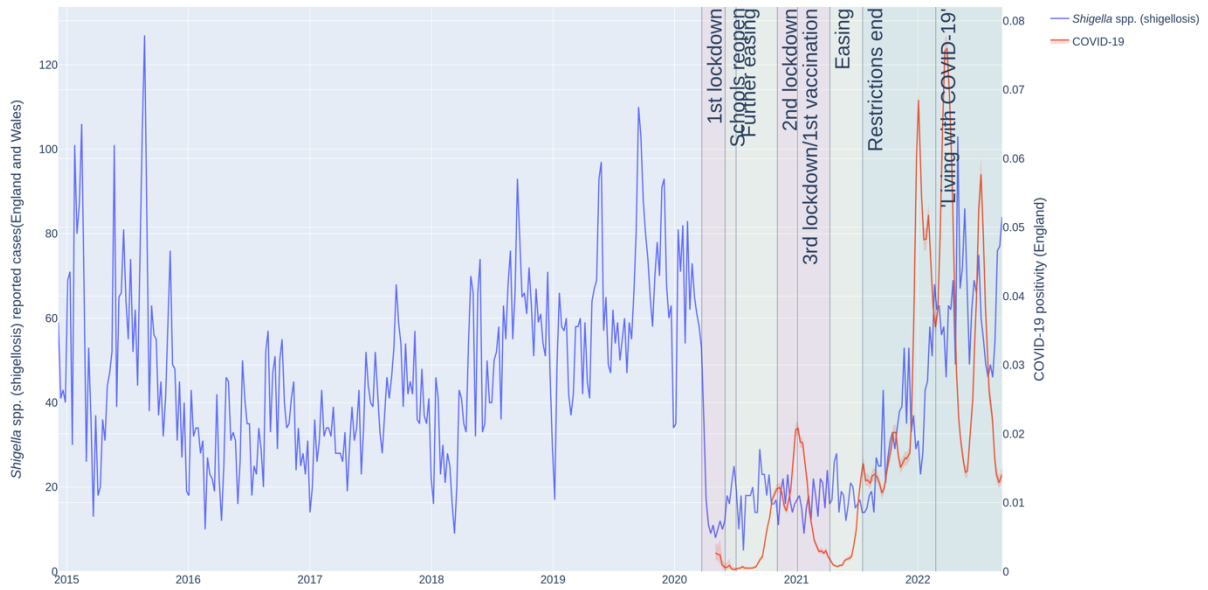
294

295

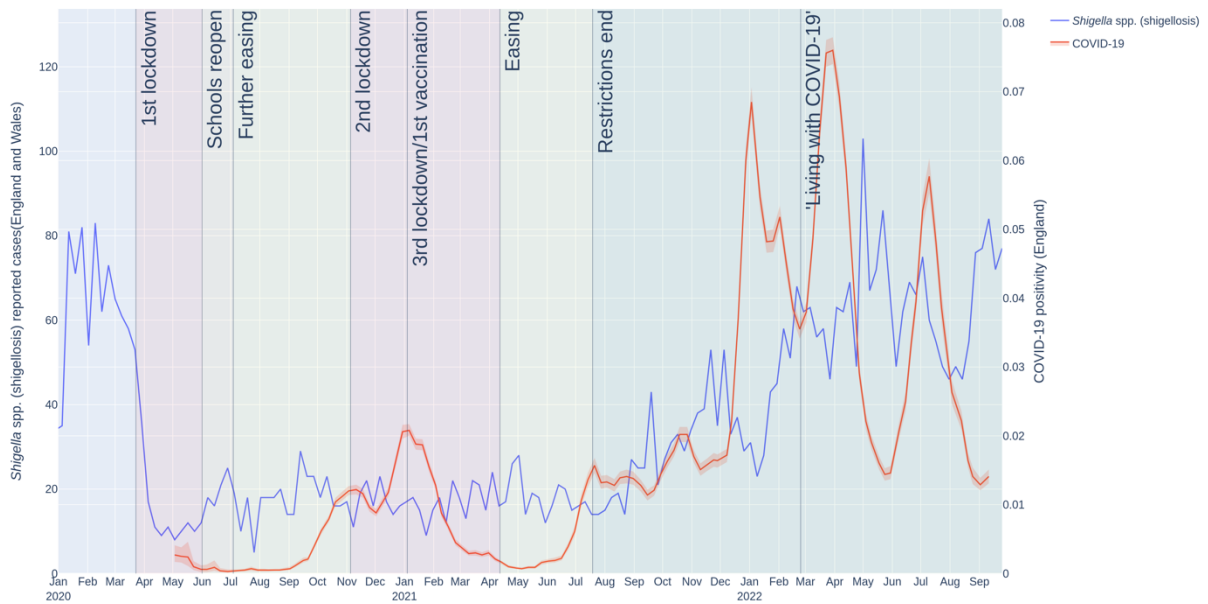
296

Suppl. Figure 20. Norovirus case numbers during the COVID-19 pandemic in England. Weekly case numbers (norovirus: left y-axis, blue line, COVID-19: right y-axis, orange line) starting from 2018 (top graph) or 30th December 2019 (bottom graph).

297 **Suppl. Figure 21**



298



299

300

301

302

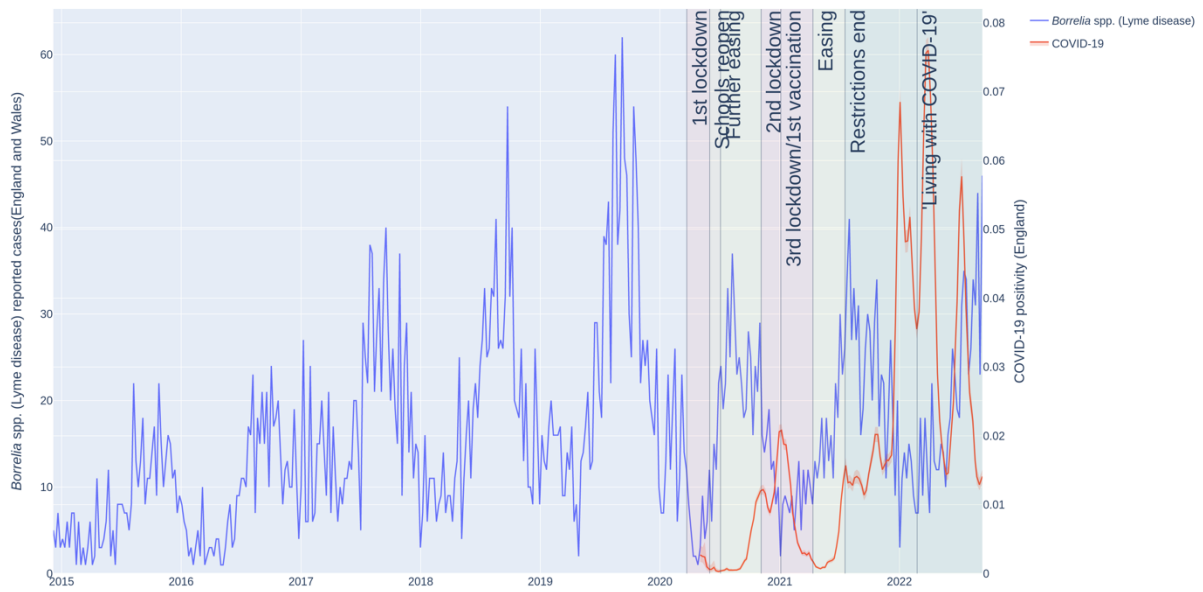
303

304

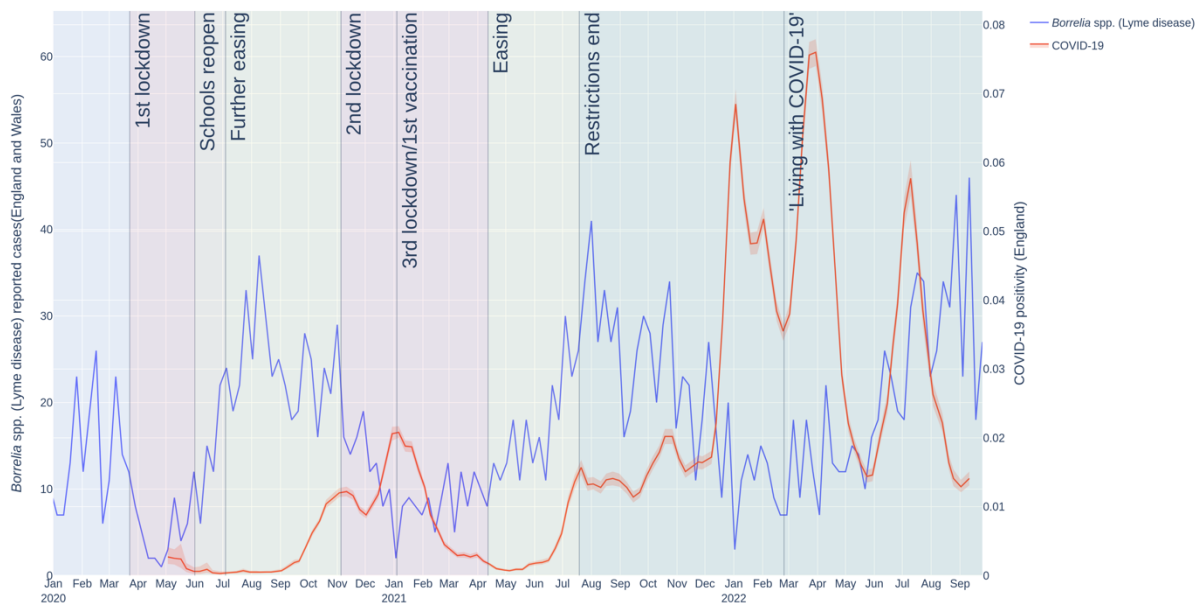
305

Suppl. Figure 21. Shigellosis (*Shigella spp.*) case numbers during the COVID-19 pandemic in England. Weekly case numbers (*Shigella spp.*: left y-axis, blue line, COVID-19: right y-axis, orange line) starting from 1st January 2015 (top graph) or 30th December 2019 (bottom graph).

306 **Suppl. Figure 22**



307



308

309

310

311

312

313

Suppl. Figure 22. Lyme disease (*Borrelia ssp.*) case numbers during the COVID-19 pandemic in England. Weekly case numbers (*Borrelia ssp.*: left y-axis, blue line, COVID-19: right y-axis, orange line) starting from 1st January 2015 (top graph) or 30th December 2019 (bottom graph).

314 **Suppl. Table 1.** Infectious diseases covered in this study and their anticipated modes
315 of transmission.

| Mode of transmission | Infectious diseases |
|-----------------------------|--|
| Airborne/droplet | Chickenpox, influenza-like-illness, measles, mumps, rubella, pneumococcal disease, scarlet fever, strep throat, tuberculosis, whooping cough |
| Blood-borne | Hepatitis C |
| Direct contact | Herpes simplex virus, methicillin resistant Staphylococcus aureus, skin and subcutaneous tissue infections, urinary tract infections |
| Faecal-oral | Cryptosporidiosis, foodborne illness, hepatitis E, infectious intestinal diseases, norovirus, shigellosis |
| Vector | Lyme disease |

316
317
318

Suppl. Table 2. Timing of COVID-19 protection measures in England.

| Year | Date | Week/Quarter | Prevention Measure | Guidelines |
|------|--------------------------------------|--------------|----------------------------------|--|
| 2020 | 23 rd March | 13/1 | First lockdown | <ul style="list-style-type: none"> - Confinement to household with exception for reasons deemed essential such as food or medicine. - 2-meter social distancing. - Mandatory wearing of face covering. - Closure of schools and non-essential businesses. - Ban of public gatherings. - Cease of foreign travel. - Rigorous hygiene measures including regular hand washing, use of hand sanitiser and frequent disinfection of surfaces. |
| | 1 st June | 23/2 | Schools reopen | Phased reopening of nurseries, primary and secondary schools. |
| | 4 th July | 27/3 | Further easing | Reopening of all non-essential business, such as restaurants, hairdressers, leisure facilities and tourist attractions. |
| | 5 th November | 45/4 | Second lockdown | Schools and universities remained open. |
| 2021 | 4 th /5 th Jan | 1/1 | First vaccination/Third lockdown | Phased administration of the COVID-19 vaccine. |
| | 12 th April | 15/2 | Easing | Reopening of all non-essential business. |
| | 19 th July | 29/3 | Restrictions end | All restrictions lifted including removal of social distancing and reopening of existing closed sectors such as nightclubs. |
| 2022 | 24 th February | 8/1 | 'Living with COVID-19' strategy | Legal requirement to self-isolate and wear face coverings removed. |