

# 1 Meta-analysis of genotype-phenotype 2 associations in Alström syndrome.

3

4 Brais Bea-Mascato<sup>1,2</sup>, Diana Valverde<sup>1,2\*</sup>

5

6 <sup>1</sup> CINBIO, Universidad de Vigo, 36310, Spain.

7 <sup>2</sup> Grupo de Investigación en Enfermedades Raras y Medicina Pediátrica, Instituto de  
8 Investigación Sanitaria Galicia Sur (IIS Galicia Sur), SERGAS-UVIGO, Vigo, Spain

9

10 \*Correspondence: Diana Valverde

11 CINBIO Facultad de Biología, Universidad de Vigo, Campus As Lagoas-Marcosende s/n,  
12 36310 Vigo, Spain

13 Tel +34 986 811 953

14 Email [dianaval@uvigo.es](mailto:dianaval@uvigo.es)

15

16

## 17 Abstract:

18 **Introduction:** Alström syndrome (ALMS, #203800) is an ultra-rare monogenic recessive  
19 disease. This the syndrome is associated with mutations in the *ALMS1* gene, which codes  
20 for a centrosome structural protein responsible for centrosome cohesion. The type of  
21 mutation associated with ALMS is mostly cLOF (97%) and they are mainly located in  
22 exons 8, 10 and 16 of the gene. Other studies in the literature have tried to establish a  
23 genotype-phenotype correlation in this syndrome with little success. The difficulty in  
24 recruiting a large cohort in rare diseases is the main barrier to conducting this type of  
25 study.

26 **Methods:** In this study we have collected all cases published to date for ALMS. We have  
27 created a database with those patients who had a genetic diagnosis and an  
28 individualised clinical history. Finally, we have attempted to establish a genotype-  
29 phenotype correlation using the truncation site of the patient's longest allele as a  
30 grouping criterion.

31 **Results:** We collected a total of 357 patients of which 227 had complete clinical  
32 information, complete genetic diagnosis and meta information regarding sex and age.  
33 We have seen that there are 5 variants in high frequency with p.(Arg2722Ter) being the  
34 most common variant with 28 alleles. There are no gender differences in disease  
35 progression. Finally, truncating mutations in exon 10 seem to be correlated with a higher  
36 prevalence of liver disorders in patients with ALMS.

37 **Conclusion:** The location of the mutation in the *ALMS1* gene does not have a major  
38 impact on the phenotype developed by the patient. Only mutations in exon 10 of the  
39 *ALMS1* gene were associated with a higher prevalence of liver disease.

40

41 **Keywords:** ALMS, Alström syndrome, ciliopathy, genotype-phenotype, metabolic  
42 disease, obesity, meta-analysis, rare disease.

43

## 44 **Introduction:**

45 Alström syndrome (ALMS, #203800) is an ultrarare monogenic disease caused by  
46 mutations in the *ALMS1* gene. It is an autosomal recessive disorder with an estimated  
47 incidence of 1-9 cases per-1,000,000 inhabitants and currently there are an estimated  
48 1000 cases described worldwide (Orphanet; 03-05-2022).

49 Most of mutations associated with this disease are complete loss-of-function (cLOF)  
50 mutations that generate a stop codon either at the same site as the mutation or result  
51 in a frameshift alteration leading to a stop codon (Marshall et al., 2015). There are  
52 currently 388 loss-of-function variants reported in ClinVar and 253 in gnomAD. These  
53 pathogenic variants have a uniform distribution along the gene and are mainly located  
54 in coding regions. Whole exome sequencing (WEG) is a standard practice for the genetic  
55 testing of rare diseases, which implies that intronic regions are poorly studied,  
56 explaining why most pathogenic variants are detected in coding regions (Sawyer et al.,  
57 2016). Exons 8, 10 and 16 are considered mutation hotspots, but this seems to be due  
58 to their large size rather than a specific regulatory correlation. Exon 8 (6,108bp) for  
59 example covers 50% of the total gene sequence (12,844bp).

60 ALMS presents a very heterogeneous phenotype in which symptoms can be aggregates  
61 into two main groups (Marshall et al., 2007a, 2011). A first group includes the presence  
62 of retinal dystrophy from early life, various metabolic disorders (obesity,  
63 hypertriglyceridemia or type 2 diabetes mellitus), hearing loss, liver and kidney  
64 dysfunction and cardiac disorders such as dilated cardiomyopathy (DCM) (Marshall et  
65 al., 2005, 2007b, 2007a). The second group of symptoms would include short stature,  
66 recurrent pulmonary infections, mental and cognitive impairment and various  
67 endocrine disorders affecting the thyroid and reproductive system (Marshall et al.,  
68 2007a). This second group would also include other very rare symptoms, such as  
69 alterations in the fingers, alopecia and spinal abnormalities (Marshall et al., 2007a).

70 ALMS is characterised by high intra- and inter-familial phenotypic heterogeneity  
71 (Marshall et al., 2005, 2007a, 2007b, 2011). This means that siblings with the same  
72 genotype may have different phenotypes, which complicates the establishment of a  
73 genotype-phenotype correlation (Hollander et al., 2017).

74 Several studies have attempted to establish a genotype-phenotype correlation without  
75 success using cohorts with 12-18 patients (Bond et al., 2005; Minton et al., 2006).  
76 Studies in larger cohorts, 58 patients, have shown that there is correlation between  
77 disease-causing variants in exon 16 and the presence of retinal degeneration before one  
78 year of age , the occurrence of urological dysfunction, DCM and diabetes (Marshall et  
79 al., 2007b). Moreover, this study found a significant correlation between disease-  
80 causing variants in exon 8 and the absent, mild or delayed kidney disease.

81 Premature termination codon (PTC) mutations are often classified as cLOF and are  
82 associated with the activation of nonsense-mediated mRNA decay (NMD), which results  
83 in the elimination of the expression of the mutated gene (Supek et al., 2021) . However,  
84 it has been shown that NMD is not 100% efficient when nonsense mutations are located  
85 in the last exons of genes (Kerr et al., 2001; Lindeboom et al., 2016; Supek et al., 2021).  
86 In the case of ALMS, there are patients who continue to express the *ALMS1* protein even  
87 when carrying two cLOF variants (Chen et al., 2017). In that study of 23 patients where  
88 the clinical manifestations were related to the expression or non-expression of the  
89 *ALMS1* gene, it was observed that those patients with residual *ALMS1* gene expression  
90 presented milder phenotypes (Chen et al., 2017).

91 Although there are several databases that list the mutations described in the *ALMS1*  
92 gene (GnomAD, ClinVar), only one, LOVD, offers a register with 140 patients but the  
93 clinical data is absent or incomplete in many cases (Fokkema et al., 2011; Landrum et  
94 al., 2018; Karczewski et al., 2020). There is still no open patient registry that collects  
95 clinical and genetic information in a comprehensive way. In this study, we have reviewed  
96 112 publications related to ALMS and compiled all available clinical and genetic  
97 information. We have collected a total of 357 patients, manually curated, on which  
98 various analyses have been performed to look for a genotype-phenotype correlation.  
99 Finally, we have made this dataset available to the scientific community in a single public  
100 access database ( <http://genesandfunctions.uvigo.es/alms-db/> ).

101

## 102 **Methods:**

### 103 Preferred reporting items for systematic reviews and 104 meta-analyses (PRISMA) guidelines:

105 This meta-analysis was performed following the PRISMA guidelines, as described in  
106 Niederlova et al. (Niederlova et al., 2019), for Bardet Biedl syndrome (BBS). In this case,  
107 the main PICO question our study sought to address was: Do ALMS patients have  
108 different phenotypes depending on where in the gene, the stop mutation occurs?.  
109 Similar studies have been conducted in smaller cohorts grouping patients by major  
110 mutational hotspots in the *ALMS1* gene. (Marshall et al., 2005, 2007b; Astuti et al.,  
111 2017).

### 112 **Search strategy:**

113 The PubMed and Google Scholar databases were searched in January 2022 using the  
114 following keyword combination: ("Alström syndrome" OR ALMS) AND ("genotype  
115 phenotype" OR "cohort" OR "case report"). The screening of the search results was  
116 carried out by BB-M by initially examining the title and abstract to determine whether it  
117 corresponded to the subject of the analysis. Some of the articles analysed in this study  
118 were not initially found by the database search but were detected by the  
119 recommendations and bibliography of other more relevant works. The search was  
120 conducted in English only, covering a period between the origin of the databases and  
121 the date of the search (January 2022).

### 122 **Study selection:**

123 All articles selected in a first search were carefully reviewed to meet the criteria for  
124 inclusion in the meta-analysis. After a thorough reading of the article, the study was  
125 included if the following characteristics were met: the cohort of the article included a  
126 patient with a diagnosis of ALMS, and the diagnosis had a genetic and clinical  
127 characterisation. Articles whose diagnosis of ALMS was based solely on phenotype were

128 discarded, (Charles et al., 1990; Holder et al., 1995; Russell-Eggitt et al., 1998; Koray et  
129 al., 2001; Worthley and Zeitz, 2001; Benso et al., 2002; Satman et al., 2002; Paisey et al.,  
130 2004; Hoffman et al., 2005; Hamamy et al., 2006; Koç et al., 2006; Gogi et al., 2007; Silan  
131 et al., 2013; Bronson et al., 2015; Boerwinkle et al., 2017; Davies et al., 2018) , as well as  
132 those that simply presented or reported the patient's mutations without giving an  
133 complete (Lazar et al., 2015) or individualised clinical history (Patel et al., 2006; Marshall  
134 et al., 2007b, 2015; Redin et al., 2012; Kilpinen et al., 2017; Gao et al., 2019; Baig et al.,  
135 2020). From an initial selection of 108 studies, 31 (Millay et al., 1986; Charles et al., 1990;  
136 Holder et al., 1995; Russell-Eggitt et al., 1998; Koray et al., 2001; Worthley and Zeitz,  
137 2001; Benso et al., 2002; Satman et al., 2002; Wu et al., 2003; Iannello et al., 2004; Paisey  
138 et al., 2004; Hoffman et al., 2005; Marshall et al., 2005, 2007b, 2015; Koç et al., 2006;  
139 Patel et al., 2006; Hamamy et al., 2006; Gogi et al., 2007; Hitz et al., 2008; Catrinoiu et  
140 al., 2009; Redin et al., 2012; Silan et al., 2013; Lazar et al., 2015; Bronson et al., 2015;  
141 Ahmad et al., 2016; Huang et al., 2016; Lindsey et al., 2017; Boerwinkle et al., 2017; Gao  
142 et al., 2019; Baig et al., 2020) were discarded and 76 (Titomanlio et al., 2004; Bond et  
143 al., 2005; Minton et al., 2006; Joy et al., 2007; Özgül et al., 2007; Malm et al., 2008;  
144 Aldahmesh et al., 2009; Khoo et al., 2009; Liu et al., 2009; Kocova et al., 2011; Wang et  
145 al., 2011, 2016a, 2016b, 2021; Aliferis et al., 2012; Jatti et al., 2012; Piñeiro-Gallego et  
146 al., 2012; Taokesen et al., 2012; Corbetti et al., 2013; Katagiri et al., 2013; Kuburović et  
147 al., 2013; Liang et al., 2013; Mahamid et al., 2013; Taşdemir et al., 2013; Kaya et al.,  
148 2014; Bahmad et al., 2014; Louw et al., 2014; Ozantürk et al., 2014; Sanyoura et al.,  
149 2014; Casey et al., 2014; Khan et al., 2015; Kim et al., 2015; Long et al., 2015; Sathya  
150 Priya et al., 2015; Chakroun et al., 2016; Laxer et al., 2016; Nikopoulos et al., 2016; Xu et  
151 al., 2016; Zmyslowska et al., 2016; Chen et al., 2017; Cruz-Aguilar et al., 2017; Das  
152 Bhowmik et al., 2017; Hollander et al., 2017; Astuti et al., 2017; Jinda et al., 2017; Bakar  
153 et al., 2017; Wicher et al., 2017; Brofferio et al., 2017; Yang et al., 2017; Castro-Sánchez  
154 et al., 2017; Dotan et al., 2018; Kilinc et al., 2018; Kvarnung et al., 2018; Maltese et al.,  
155 2018; Nasser et al., 2018; Sanchez-Navarro et al., 2018; Tsai et al., 2018; Waldman et al.,  
156 2018; Shurygina et al., 2019; Weiss et al., 2019; Gatticchi et al., 2020; Hirano et al., 2020;  
157 Hull et al., 2020; Kamal et al., 2020; Lombardo et al., 2020; Muring et al., 2020;  
158 Rethanavelu et al., 2020; Spinelli et al., 2020; Torkamandi et al., 2020; Zhou et al., 2020;

159 Bea-Mascato et al., 2021; Saadah et al., 2021; Srikrupa et al., 2021; Zhang et al., 2021)  
160 were selected for information extraction and subsequent analyses.

## 161 Data extraction and curation:

162 For the extraction of information, three main groups were defined: metadata, genetic  
163 information, and clinical information.

164 The metadata refers to the: ID of each patient within the dataset, the ID of the family to  
165 which they belong (patients with the same family ID are siblings) and the reference from  
166 where the information of that patient has been extracted.

167 In the case of genetic information, whenever possible, the following should be  
168 extracted: the original allele reference, the nomenclature of the mutation for the cDNA  
169 and protein sequence, the exon/intron where the mutation is located and the genotype  
170 of the patient (homozygote or compound heterozygote). All reported mutations were  
171 named following the HGVS guidelines with the transcript NM\_015120.4 and validated  
172 with the name checker of the mutalyzer software (Lefter et al., 2021). The back  
173 translator tool of the mutalyzer software was also used to determine the mutation  
174 nomenclature at the cDNA level when only the protein annotation of the mutation was  
175 provided in the article. In these cases, only nonsense and stop mutations could be  
176 determined, as the algorithm does not work with frameshift mutations.

177 With regard to the clinical information, sex, age and ethnicity were extracted (whenever  
178 possible), the diagnostic criteria named by Marshall et al., (Marshall et al., 2007a) were  
179 used to try to homogenise it: vision impairments (history of nystagmus in  
180 infancy/childhood, legal blindness, cone and rod dystrophy by ERG); obesity and/or  
181 insulin resistance and/or T2DM; history of DCM/CHF; hearing loss; hepatic dysfunction;  
182 renal failure; pulmonary dysfunction; short stature; males: hypogonadism; females:  
183 irregular menses and/or hyperandrogenism; thyroid disorders; mental retarded;  
184 abnormal appearance of a finger, Intestinal problems, scoliosis/flat wide feet, epilepsy  
185 and alopecia (**Table 1**). Initially, the full information reported in the article was noted for  
186 each individual symptom and the age of onset if this was reported. This was then  
187 converted into a binary matrix to simplify and homogenise the subsequent analysis.

188 **Table 1.** Abbreviations used in the analysis, full name of the phenotypic categories, phenotypes aggregated in each category, prevalence of each phenotypic  
 189 category in the study cohort and representative HPO terms for each category.

Abbrev.	Complete name	Phenotype	Prevalence (%)	HPO terms added in each category
VI	Vision impairments	History of nystagmus in infancy/childhood, legal blindness, cone and rod dystrophy by ERG	96.54	HP:0000556 (Retinal dystrophy)  HP:0000639 (Nystagmus)  HP:0000618 (Blindness)
MT	Metabolic anomalies	Obesity and/or insulin resistance and/or Type 21 diabetes mellitus (T2DM)	85.88	HP:0001513 (Obesity) HP:0005978 (T2DM)
HL	Hearing anomalies	Hearing loss	62.54	HP:0000365 (Hearing loss)
HRT	Heart anomalies	History of Dilated cardiomyopathy/congestive heart failure (DCM/CHF)	49.86	HP:0001644 (DCM) HP:0001635 (CHF)
LIV	Liver anomalies	Hepatic dysfunction	34.58	HP:0001410 (Decreased liver function)
REN	Renal anomalies	Renal failure	29,68	HP:0000077 (Renal anomaly)
MEND	Mental anomalies	Mental disability	22.48	HP:0001249 (Intellectual disability)
REP	Reproductive system anomalies	Males: hypogonadism; Females: irregular menses and/or hyperandrogenism	15.56	HP:0000026 (Male hypogonadism)  HP:0000858 (Irregular menstruation)
PUL	Pulmonary anomalies	Pulmonary dysfunction	14.99	HP:0002795 (Impaired pulmonary function)
SCO	Spine/feet anomalies	Scoliosis/flat wide feet	14.12	HP:0002650 (Scoliosis) HP:0001763 (Pes planus)
TYD	Thyroid metabolism anomalies	Thyroid disorders	11.53	HP:0000820 (Abnormality of the thyroid gland)
SHS	Stature anomalies	Short stature	7.78	HP:0004322 (Short stature)
ALO	Alopecia	Alopecia	4.61	HP:0001596 (Alopecia)
NER	Nervous system anomalies	Epilepsy	3.75	HP:0001250 (Seizure)
ABFING	Finger anomalies	Abnormal appearance of a finger	1.15	HP:0001155 (Abnormality of the hand)
INT	Intestine anomalies	Intestinal problems	1.15	HP:0011024 (Abnormality of the gastrointestinal tract)



## 191 Statistical frequency analysis:

192 To determine the existence of a genotype-phenotype correlation in our patient registry,  
193 we selected a sub-cohort of 227 patients who met the following criteria: **I)** complete  
194 genetic information (Detection of two mutated alleles with complete notation at the  
195 cDNA and protein level), **II)** complete clinical information (Sex, age and presence or  
196 absence of the 5 most prevalent clinical manifestations used in these patients: vision  
197 impairments, metabolic anomalies, hearing anomalies, heart anomalies and liver  
198 anomalies). The heterogeneity of the clinical notation associated with these 5 categories  
199 was summarised in a binary matrix (1=presence, 0=absence) which was used for  
200 frequency calculations to determine the prevalence of each symptom in the cohort and  
201 the different subgroups.

202 Following the methodology described by Niederlova et al., (Niederlova et al., 2019) a  
203 syndromic score between 0 and 1 was calculated. This syndromic score gives an estimate  
204 of how many of the 5 most prevalent clinical manifestations described above are present  
205 in each patient.

206 In this study the lack of race was not considered to exclude a patient from being included  
207 in the study cohort. Due to the high heterogeneity of this characteristic and the small  
208 cohort size, correlations with enough statistical power could not be established.

209 Patient ages were initially aggregated into 10-year age intervals: 0-9, 10-19, 20-29, 30-  
210 39, 40-49, 50-59. After studying the evolution of the syndromic score in the different  
211 age intervals, it was found that the number of patients above 39 years was very small.  
212 This is consistent with the life expectancy of patients with ALMS, which is usually not  
213 more than 50 years. For this reason, a regrouping of the last 3 intervals in patients over  
214 30 years of age was made for the subgroup analysis.

215 Following the methodology used by Marshall et al., (Marshall et al., 2007b) patients  
216 were genotypically grouped according to the different mutational hotspots: exon 8 (E8),  
217 exon 10 (E10) and exon 16 (E16). For compound heterozygous patients this aggregation  
218 was performed based on the patient's longest allele. Since ALMS is an autosomal  
219 recessive disease, it is expected that a single functional copy of the gene is sufficient to

220 prevent the appearance of the symptoms of the disease (Collin et al., 2002; Hearn,  
221 2018). In this way, it would be expected that a protein truncated in exon 16-20 could  
222 have more possibilities of maintaining a certain functionality than if it is truncated in  
223 exon 5.

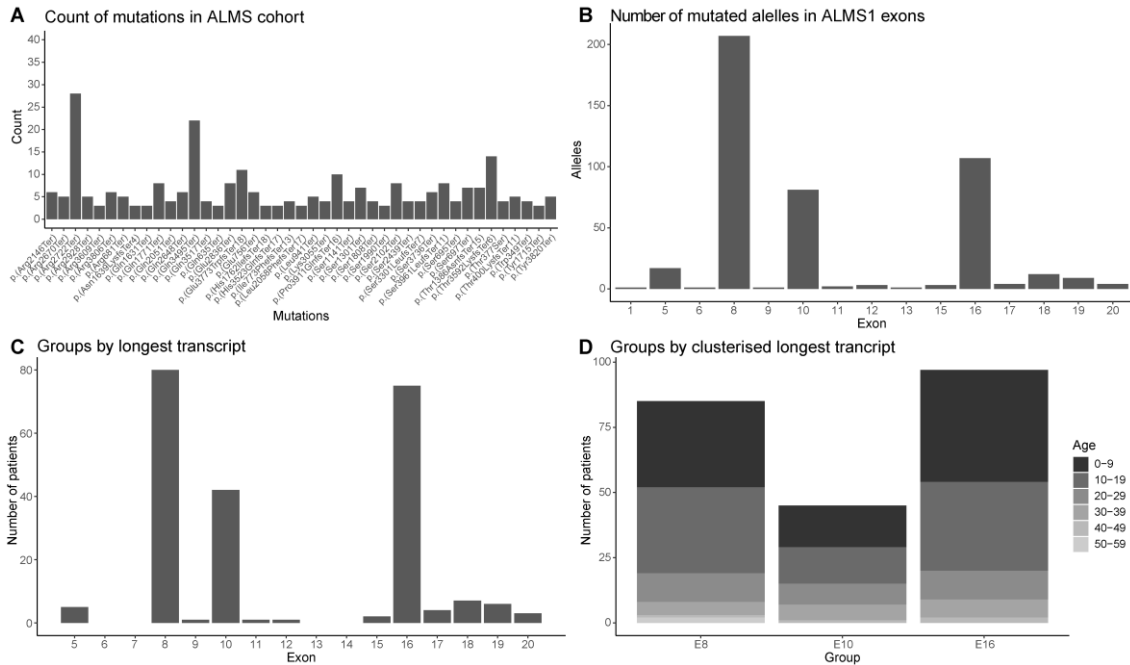
224 Approximately 90% of the mutations were found in the mutation hotspots (E8, E10, and  
225 E16), but to include the remaining % in the study, 3 intervals were defined: longest allele  
226 truncated before exon 9 (E8), longest allele truncated between exon 9 and 14 (E10),  
227 longest allele truncated after exon 14 (E16).

228 In cases where only two groups were compared, a Wilcoxon test was used. In trials  
229 where comparisons were made between several groups (more than 2), an overall p-  
230 value calculation was performed using the non-parametric Kruskal-Wallis test, followed  
231 by a comparison of means by groups of two using the Wilcoxon test with correction for  
232 FDR, with corrected p-values of less than 0.05 being considered significant.

233 For the analysis of the prevalence of symptoms in the different genetic groups,  
234 contingency tables were created showing the number of positive/negative cases within  
235 each patient group. Differences in the prevalence of phenotypes in the different patient  
236 groups were assessed using pairwise Fisher's exact test. Statistical significance of  
237 differences between individual groups was determined with the FDR correction for  
238 multiple comparisons.

## 239 Results:

### 240 Cohort description:



241

242 **Figure 1.** Cohort Description of 227 ALMS1 patients. **(A)** Counting of the different alleles  
 243 in the cohort. Alleles with more than 2 copies in the cohort are represented. **(B)** Number  
 244 of alleles per exon in the study cohort. **(C)** Patients grouped by their copy of the *ALMS1*  
 245 gene with the later truncation mutation. **(D)** Age composition in the subgroups with the  
 246 latest truncation site in the *ALMS1* gene in exon 8 (E8), exon 10 (E10) and exon 16 (E16).

247 A total of 357 patients were collected from a total of 76 scientific publications that  
 248 passed the initial screening. Only patients with information on sex, age and a complete  
 249 genetic characterisation (description of two non-functional alleles; **methods**) were used  
 250 for further analysis. Only mutations in coding regions were considered in the study. This  
 251 reduced the initial cohort to a total of 227 patients, 128 (56.38%) males and 99 females  
 252 (43.61%). This study cohort contained a total of 176 variants where 168 were cLOF and  
 253 8 missense mutations (**Figure S1**). Most of them were private mutations, but 5  
 254 mutations were shown to have a high frequency: p.(Arg2722Ter) (28 alleles),  
 255 p.(Gln3495Ter) (22 alleles), p.(Thr3592LysfsTer6) (14 alleles), p.(Glu3773TrpfsTer18) (11  
 256 alleles) and p.(Pro3911GlnfsTer16) (10 alleles) (**Figure 1A**). The number of alleles

257 described for these mutations shows certain inconsistencies with the gnomAD database  
258 and in some cases the variant does not even appear in gnomAD database (**Table 2**).

259 **Table 2.** Differences in the number of alleles reported in gnomAD and in our database for the  
260 most recurrent mutations.

261

Pathogenic variant	ALMSDB	gnomAD
p.(Arg2722Ter)/p.(Arg2720Ter)	28	4
p.(Gln3495Ter)/p.(Gln3493Ter)	22	11
p.(Thr3592LysfsTer6)/p.(Thr3590LysfsTer6)	14	14
p.(Glu3773TrpfsTer18)/p.(Glu3771TrpfsTer18)	11	6
p.(Pro3911GlnfsTer16)	10	0

262

263 Patients were initially grouped into age ranges by decades (from 0 to 59 years) but due  
264 to the low number of patients in the age ranges 40-49 and 50-59 years, they were added  
265 to the 30-39 years group and reclassified as over 30 years for further analysis.

266 Out of a total of 454 alleles, 207 (45.59%) were in exon 8, 107 (23.57%) in exon 16 and  
267 81 (17.84%) in exon 10 (**Figure 1B**). Making these exons the main mutation hotspots in  
268 our cohort, consistent with the literature.

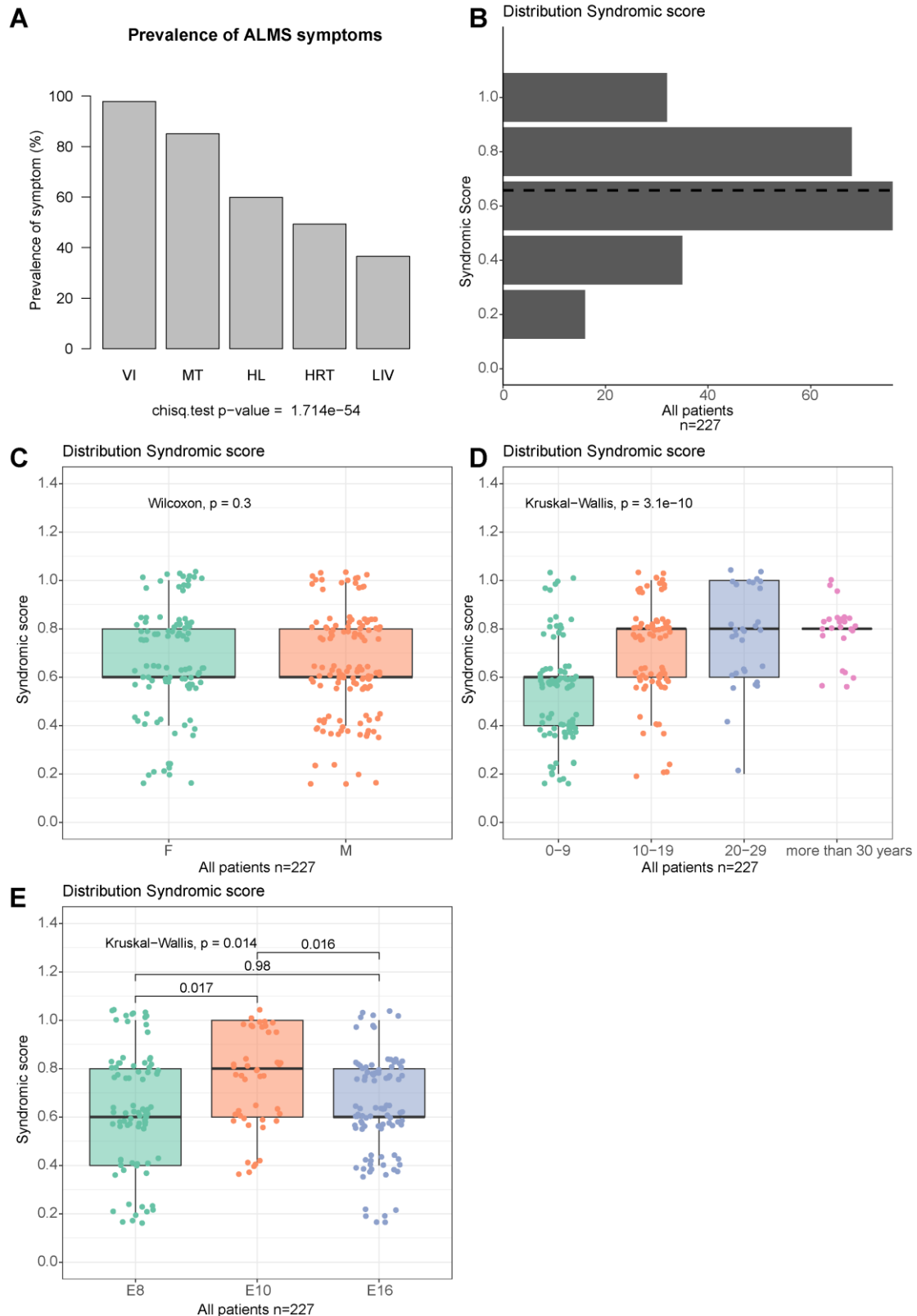
269 Due to the recessive nature of ALMS, we decided to define the characteristic allele of  
270 each patient according to the mutation furthest from the origin of the gene (**Figure 1C**).  
271 Many of the patients carrying mutations in exon 8 were compound heterozygotes with  
272 mutations in exon 16. After this regrouping we saw that 80 (35.34%) patients had the  
273 largest allele truncated in exon 8, 42 (18.50%) in exon 10 and 75 (33.03%) in exon 16.

274 In accordance with other similar study (Marshall et al., 2007b) we used the mutation  
275 hotspots (exons 8, 10 and 16) to subdivide the patients into genetic groups E8, E10 and  
276 E16 respectively. Due to the low frequency of mutations in other exons of the *ALMS1*  
277 gene we decided to add patients with truncated alleles in adjacent exons to these  
278 mutation hotspots. Group E8 includes all patients with the longest truncated allele  
279 before exon 9. Group E10 includes patients with the longest truncated allele between  
280 exon 9 and exon 13. Finally group E16 included patients with the longest truncated allele  
281 from exon 14 to exon 20. As a result, groups E8, E10 and E16 contained 85, 45 and 97  
282 patients respectively (**Figure 1D**).

283 Patients with mutations in exon 10 have a higher  
284 syndromic score than the other subgroups:

285 For the strategy of collecting phenotypic manifestations, 16 syndromic groups  
286 **(methods)** were initially defined. In the genotype-phenotype correlation analysis, a  
287 minimum prevalence threshold of 15% (n=33) was established in the cohort **(Figure S2)**.  
288 This reduced the initial phenotypic manifestations to 9 groups: visual impairments (VI,  
289 97.80%), metabolic anomalies (MT, 85.02%), hearing anomalies (HL, 59.91%), heart  
290 anomalies (HRT, 49.34%), liver anomalies (LIV, 36.56%), renal anomalies (REN, 29.52%),  
291 mental anomalies (MEND, 24.67%), reproductive system anomalies (REP, 17.62%),  
292 pulmonary anomalies (RES, 19.38%).

293 Following the methodology developed by Niederlova et al., (Niederlova et al., 2019), the  
294 5 main disease conditions (VI, MT, HL, HRT and LIV; **methods**) were used to create a  
295 discrete syndromic score ranging from 0 to 1 **(Figure 2A)**. The mean of this syndromic  
296 score in the total cohort is around 0.7, with the most common values being 0.6 (3 of the  
297 5 symptoms) and 0.8 (4 of the 5 symptoms) **(Figure 2B)**. No significant differences in  
298 syndromic score were observed between sexes. However, the syndromic score  
299 increased significantly in the different age ranges of the patients (p-value = 3.1 e-10;  
300 **Figure 2C-D**). This is consistent with the progressive worsening that these patients  
301 undergo throughout their lives (Marshall et al., 2005, 2007a). Finally, we observed how  
302 the syndromic score was distributed in the different groups defined according to their  
303 largest transcript. Patients whose longest transcript was truncated around exon 10 (E10)  
304 had a higher syndromic score compared to the E8 (p-value = 0.017) and E16 (p-value =  
305 0.016) groups **(Figure 2E)**.



306

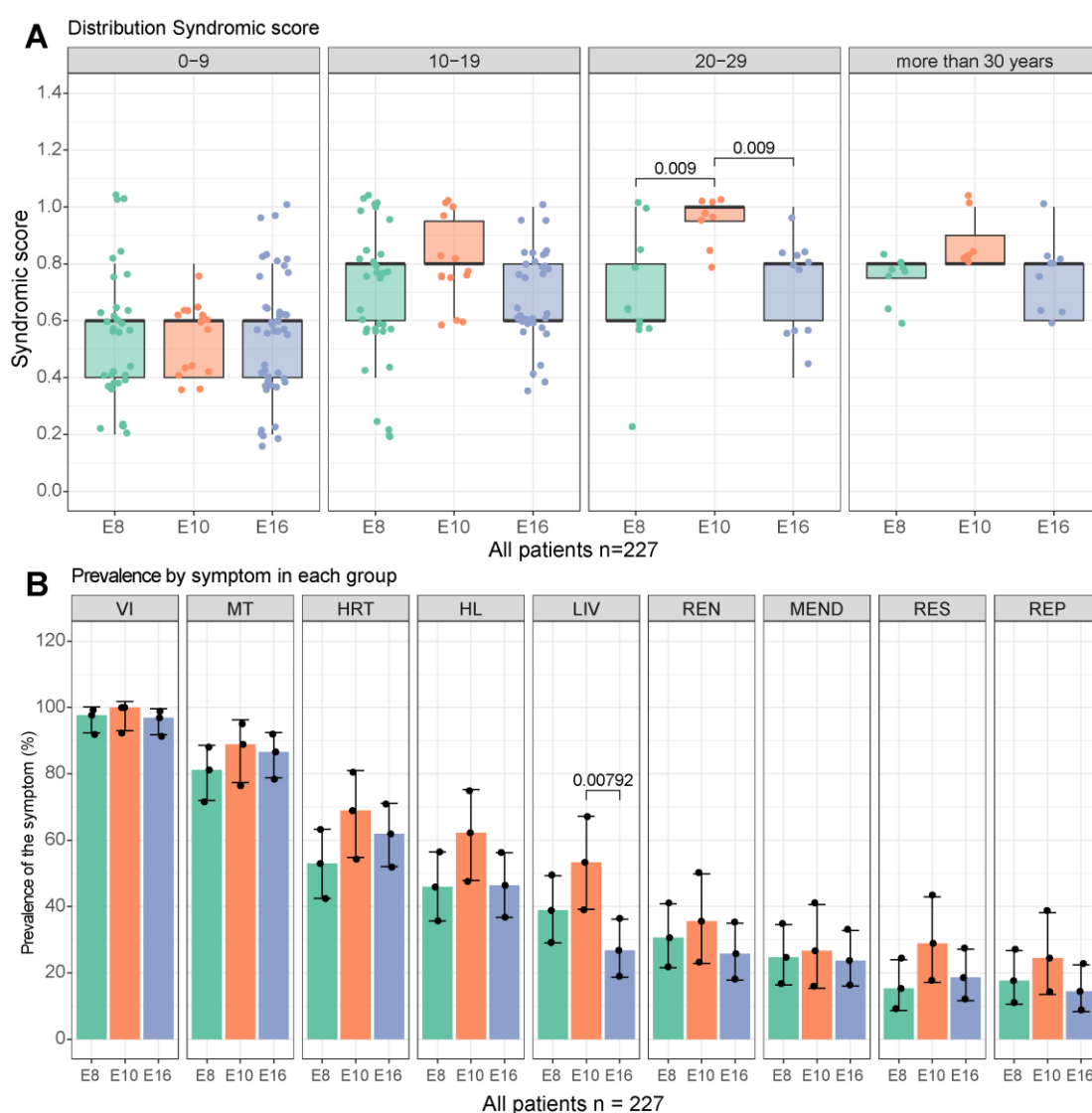
307 **Figure 2.** Study of the phenotypic impact on different subgroups of the study cohort. **(A)**

308 Prevalence of the 5 main phenotypic groups in the cohort: visual impairments (VI),

309 metabolic anomalies (MT), hearing anomalies (HL), heart anomalies (HRT) and liver

310 anomalies (LIV). **(B)** Distribution of syndromic scores calculated from the presence or  
311 absence of the 5 most relevant phenotypic groups. **(C)** Gender comparison of syndromic  
312 scores. **(D)** Comparison of the syndromic scores between age groups. **(E)** Comparison of  
313 the syndromic scores between subgroups created from the longest copy of the *ALMS1*  
314 gene.

315 Patients with truncation variants around exon 10  
316 have a higher prevalence of liver disease:



317

318 **Figure 3** Correlation study between symptoms prevalence and the truncation site of the  
319 *ALMS1* gene. **(A)** Evolution of the syndromic score among the subgroups by the longest

320 copy of the *ALMS1* gene in the different age groups. **(B)** Prevalence of the different  
321 symptom clusters in the subgroups by the longest copy of the *ALMS1* gene.

322 To determine whether the differences between the E8, E10 and E16 groups were due to  
323 an unequal composition between the different age ranges in each group, the syndromic  
324 score was studied by combining both parameters (age and genetic group) **(Figure 3A)**.  
325 In the first decade of life, no significant differences in syndromic score were observed  
326 between the groups. Between the ages of 10 to 19 years, a higher syndromic score was  
327 observed in the E10 group compared to the E16 group (FDR = 0.061). From 20-29 years  
328 of age, a higher syndromic score was observed in the E10 group compared to the E8 and  
329 E16 groups (FDR = 0.009, in both cases). Finally, in patients over 30 years of age, no  
330 significant differences were observed between the genetic groups.

331 After concluding that the differences observed between the groups were not due to an  
332 unequal age composition between them, the prevalence of the 9 phenotypic  
333 manifestations in each of these groups was studied **(Figure 3B)**. Patients within the E10  
334 group were found to have a higher prevalence of liver disorders compared to patients  
335 in the E8 and E16 groups. For the remaining 8 syndromic manifestations no significant  
336 differences were found between the genetic groups.

## 337 **Discussion:**

338 Meta-analyses are a useful tool to address one of the main limitations when attempting  
339 to establish a genotype-phenotype correlation in a rare disease, the inability to recruit  
340 a large cohort to draw robust and statistically significant conclusions. Although meta-  
341 analyses mainly focus on the aggregation of several studies with well-defined and well-  
342 studied cohorts, this is often not possible in rare diseases. Alternatively, one can try to  
343 aggregate information obtained from case reports in the literature. However, the lack  
344 of uniform criteria in how authors describe their patients is one of the main biases of  
345 this approach. In this paper we adapt and apply the methodology described by  
346 Niederlova et al (Niederlova et al., 2019) from a polygenic disease such as BBS to a  
347 monogenic disease such as ALMS.



348 Despite the fact that ALMS is a monogenic disease (Hearn et al., 2002), to date several  
349 studies have already discussed the possible existence of several tissue-specific isoforms  
350 for the *ALMS1* gene, which may have different regulatory roles that explain the high  
351 symptomatic heterogeneity (Collin et al., 2002, 2012; Hearn et al., 2002; Braune et al.,  
352 2017). Although this is an interesting approach, the isolated nature of the data published  
353 in the case reports does not allow validation it. In order to validate this hypothesis, the  
354 recruitment of a large cohort is necessary. Different cohorts have been described in the  
355 literature, the largest being Marshall et al. (Marshall et al., 2007b), followed by Ozantürk  
356 et al. (Ozantürk et al., 2014), the NIH clinical centre cohort (Brofferio et al., 2017;  
357 Waldman et al., 2018), Chen et al. (Chen et al., 2017) and Rethanavelu et al.  
358 (Rethanavelu et al., 2020) with 58, 44, 38, 23 and 21 ALMS patients, respectively.  
359 Significant genotype-phenotype correlations were only detected in Marshall et al  
360 (Marshall et al., 2007b), highlighting the importance of the sample size used in this type  
361 of study.

362 The causal mutations of ALMS are mainly of the cLOF type (generating a PTC) (Marshall  
363 et al., 2015). These types of mutations activate nonsense-mediated decay (NMD),  
364 preventing the translation of the sequence from mRNA to protein (Supek et al., 2021).  
365 However, certain situations have been described, such as PTC mutations in the last  
366 exons of a gene, in which NMD can be prevented or incompletely produced (Lindeboom  
367 et al., 2016; Supek et al., 2021). Chen et al., have detected *ALMS1* gene expression in  
368 patients carrying two cLOF mutations leading to PTC (Chen et al., 2017). That study has  
369 also correlated residual *ALMS1* gene expression with the development of milder  
370 phenotypes (Chen et al., 2017). Taking this into account, it could happen that cLOF  
371 mutations in the terminal exons of the *ALMS1* gene do not activate NMD, generating a  
372 partially functional protein or a non-functional misfolded protein. Under this hypothesis,  
373 we grouped the patients in our study according to the longest transcript they had. Three  
374 different groups related to the main mutational hotspots of the *ALMS1* gene, exons 8,  
375 10 and 16, were defined. A similar approach has already been used on a cohort of 58  
376 ALMS patients by Marshall et al. (Marshall et al., 2007b). Subsequently, a syndromic  
377 score was created by adding the 5 clinical manifestations more prevalent of ALMS. This  
378 methodology was adapted from Niederlova et al, (Niederlova et al., 2019).

379 The results showed that the syndromic score increases with age (**Figure 2D**), which was  
380 consistent with the gradual worsening that these patients suffer throughout their lives  
381 (Marshall et al., 2005, 2007a). This helped us to validate the effectiveness of the  
382 syndromic score in measuring the severity of the patient symptoms. When comparing  
383 the syndromic scores of the different genetic groups by age groups, it was observed that  
384 patients with truncation mutations in exon 10 (E10) evolve more unfavourably than the  
385 rest (**Figure 3A**). The fact that these differences are not appreciable after the age of 30  
386 years could be due to a higher mortality in this group in the second and third decades of  
387 life. This supposed higher mortality after 30 years could be correlated with the greater  
388 prevalence of liver problems that patients with truncation mutations at exon 10 (E10)  
389 appear to have (**Figure 3B**). This correlation was not detected in previous genotype-  
390 phenotype analyses (Bond et al., 2005; Minton et al., 2006; Patel et al., 2006; Marshall  
391 et al., 2007b). Marshall et al., (Marshall et al., 2007b) described disease-causing variants  
392 in exon 16 as leading to urological dysfunction, DCM and diabetes. In our study, we did  
393 not look for correlations in urological dysfunction due to the lack of data reported in the  
394 literature, leading to a low prevalence of these types of symptoms. In the case of DCM  
395 and diabetes the prevalence was the same among the established genetic groups.  
396 Marshall et al., (Marshall et al., 2007b) also found a significant association between  
397 alterations in exon 8 and absent, mild or delayed kidney disease; findings that were not  
398 observed in our analysis.

399 The explanation for this event could be related to the residual expression of *ALSM1*  
400 gene. Mutations in exon 10 could prevent NMD activation and give rise to a misfolded  
401 protein that causes greater hepatotoxicity. In the case of mutations in exon 16 or  
402 adjacent, perhaps the NMD is not activated either, but the generated protein, despite  
403 not being functional, could have a semi-normal conformation that prevents the  
404 formation of aggregates. This hypothesis could be easily tested if these protein isoforms  
405 can be simulated by homology, but unfortunately the protein structure of the *ALMS1*  
406 gene remains unknown and cannot be simulated using the artificial intelligence models  
407 such as AlphaFold (van Breugel et al., 2022).

408 Finally, the *ALMS1* sequence has already described the presence of a lncRNA, *ALMS1-*  
409 *IT1*, with a role in regulating proliferation in various types of cancers and

410 neuroinflammation and a pseudo gene, *ALMS1P1*, whose function is still unknown (Lu  
411 et al., 2021; Luan et al., 2021; Mei et al., 2021). Due to the large length of the *ALMS1*  
412 gene, the presence of more of these elements would not be uncommon and could  
413 explain why the localisation of the cLOF variant can lead to different phenotypes. These  
414 events could be of help understanding the regulation of *ALMS1* in the different tissues  
415 involved in the disease, and the great heterogeneity observed for the clinical symptoms.

## 416 **Conclusion:**

417 In conclusion, 5 highly prevalent mutations were detected in our cohort. Not all of these  
418 variants appear in public databases. There are no gender differences in the prevalence  
419 of the different symptoms of ALMS. Patients' symptoms worsen with age, and the site  
420 of the *ALMS1* gene mutation does not influence the worsening of symptoms in most  
421 cases. Only truncation of the ALMS1 protein at exon 10 level correlated with a higher  
422 prevalence of liver problems in these patients.

423 **Author Contributions:** BB-M, DV designed the study. BB-M selected, reviewed, collected and  
424 curated data from the scientific articles. BB-M designed and executed the analysis pipeline. BB-  
425 M created the publicly accessible online database. BB-M and DV drafted the article. All authors  
426 wrote the manuscript and provided approval for publication.

427 **Funding:** This work was funded by Instituto de Salud Carlos III de Madrid FIS project PI15/00049  
428 and PI19/00332, Xunta de Galicia (Centro de Investigación de Galicia CINBIO 2019-2022) Ref.  
429 ED431G-2019/06, Consolidación e estruturación de unidades de investigación competitivas e  
430 outras accións de fomento (ED431C-2018/54). Brais Bea-Mascato (FPU17/01567) was  
431 supported by graduate studentship awards (FPU predoctoral fellowship) from the Spanish  
432 Ministry of Education, Culture and Sports.

433 **Informed Consent Statement:** Not Apply.

434 **Data Availability Statement:** Data are available via [https://github.com/BreisOne/meta-](https://github.com/BreisOne/meta-analysis_ALMS)  
435 [analysis\\_ALMS](https://github.com/BreisOne/meta-analysis_ALMS) or <http://genesandfunctions.uvigo.es/alms-db/>.

436 **Code Availability Statement:** The code used in this study can be consulted on the GitHub  
437 repository [https://github.com/BreisOne/meta-analysis\\_ALMS](https://github.com/BreisOne/meta-analysis_ALMS).

## 438 **References:**

- 439 Ahmad, A., D'Souza, B., Yadav, C., Agarwal, A., Kumar, A., Nandini, M., et al. (2016).  
440 Metabolic Syndrome in Childhood: Rare Case of Alstrom Syndrome with Blindness.  
441 *Indian J. Clin. Biochem.* 31, 480–482. doi: 10.1007/s12291-015-0543-8.
- 442 Aldahmesh, M. A., Abu-Safieh, L., Khan, A. O., Al-Hassnan, Z. N., Shaheen, R., Rajab, M.,  
443 et al. (2009). Allelic heterogeneity in inbred populations: The Saudi experience with  
444 Alström syndrome as an illustrative example. *Am. J. Med. Genet. Part A* 149, 662–  
445 665. doi: 10.1002/ajmg.a.32753.
- 446 Aliferis, K., Hellé, S., Gyapay, G., Duchatelet, S., Stoetzel, C., Mandel, J. L., et al. (2012).  
447 Differentiating Alström from Bardet-Biedl syndrome (BBS) using systematic  
448 ciliopathy genes sequencing. *Ophthalmic Genet.* 33, 18–22. doi:  
449 10.3109/13816810.2011.620055.
- 450 Astuti, D., Sabir, A., Fulton, P., Zatyka, M., Williams, D., Hardy, C., et al. (2017).  
451 Monogenic diabetes syndromes: Locus-specific databases for Alström, Wolfram,  
452 and Thiamine-responsive megaloblastic anemia. *Hum. Mutat.* 38, 764–777. doi:  
453 10.1002/humu.23233.
- 454 Bahmad, F., Costa, C. S. A., Teixeira, M. S., de Barros Filho, J., Viana, L. M., and Marshall,  
455 J. (2014). Síndrome de Alström familiar: Uma rara causa de perda auditiva  
456 progressiva bilateral. *Braz. J. Otorhinolaryngol.* 80, 99–104. doi: 10.5935/1808-  
457 8694.20140023.
- 458 Baig, S., Paisey, R., Dawson, C., Barrett, T., Maffei, P., Hodson, J., et al. (2020). Defining  
459 renal phenotype in Alström syndrome. *Nephrol. Dial. Transplant* 35, 994–1001. doi:  
460 10.1093/ndt/gfy293.
- 461 Bakar, A. A., Kamal, N. M., Alsaedi, A., Turkistani, R., and Aldosari, D. (2017). Alström  
462 syndrome. *Med. (United States)* 96, 4–7. doi: 10.1097/MD.0000000000006192.
- 463 Bea-Mascato, B., Solarat, C., Perea-Romero, I., Jaijo, T., Blanco-Kelly, F., Millán, J. M., et  
464 al. (2021). Prevalent alms1 pathogenic variants in spanish alström patients. *Genes*  
465 (*Basel*). 12, 1–12. doi: 10.3390/genes12020282.

- 466 Benso, C., Hadjadj, E., Conrath, J., and Denis, D. (2002). Three new cases of Alström  
467 syndrome. *Graefe's Arch. Clin. Exp. Ophthalmol.* 240, 622–627. doi:  
468 10.1007/s00417-002-0479-6.
- 469 Boerwinkle, C., Marshall, J. D., Bryant, J., Gahl, W. A., Olivier, K. N., and Gunay-Aygun,  
470 M. (2017). Respiratory manifestations in 38 patients with Alström syndrome.  
471 *Pediatr. Pulmonol.* 52, 487–493. doi: <https://doi.org/10.1002/ppul.23607>.
- 472 Bond, J., Flintoff, K., Higgins, J., Scott, S., Bennet, C., Parsons, J., et al. (2005). The  
473 importance of seeking ALMS1 mutations in infants with dilated cardiomyopathy. *J.*  
474 *Med. Genet.* 42, 1–3. doi: 10.1136/jmg.2004.026617.
- 475 Braune, K., Volkmer, I., and Staeger, M. S. (2017). Characterization of Alstrom Syndrome  
476 1 (ALMS1) Transcript Variants in Hodgkin Lymphoma Cells. *PLoS One* 12, e0170694.  
477 Available at: <https://doi.org/10.1371/journal.pone.0170694>.
- 478 Brofferio, A., Sachdev, V., Hannoush, H., Marshall, J. D., Naggert, J. K., Sidenko, S., et al.  
479 (2017). Characteristics of cardiomyopathy in Alström syndrome: Prospective single-  
480 center data on 38 patients. *Mol. Genet. Metab.* 121, 336–343. doi:  
481 10.1016/J.YMGME.2017.05.017.
- 482 Bronson, S. C., Anand Moses, C. R., Periyandavar, I., Dharmarajan, P., Suresh, E.,  
483 Shanmugam, A., et al. (2015). Diabetes in the young – A case of Alström syndrome  
484 with myopathy. *J. R. Coll. Physicians Edinb.* 45, 33–37. doi:  
485 10.4997/JRCPE.2015.108.
- 486 Casey, J., McGettigan, P., Brosnahan, D., Curtis, E., Treacy, E., Ennis, S., et al. (2014).  
487 Atypical Alstrom syndrome with novel ALMS1 mutations precluded by current  
488 diagnostic criteria. *Eur. J. Med. Genet.* 57, 55–59. doi: 10.1016/j.ejmg.2014.01.007.
- 489 Castro-Sánchez, S., Álvarez-Satta, M., Tohamy, M. A., Beltran, S., Derdak, S., and  
490 Valverde, D. (2017). Whole exome sequencing as a diagnostic tool for patients with  
491 ciliopathy-like phenotypes. *PLoS One* 12, 1–16. doi:  
492 10.1371/journal.pone.0183081.
- 493 Catrinoiu, D., Mihai, C. M., Tuta, L., Stoicescu, R., and Simpetru, A. (2009). Rare case of  
494 Alstrom syndrome with empty sella and interfamilial presence of Bardet-Biedl

- 495           phenotype. *J. Med. Life* 2, 98–103.
- 496   Chakroun, A., Ben Said, M., Ennouri, A., Achour, I., Mnif, M., Abid, M., et al. (2016). Long-  
497           term clinical follow-up and molecular testing for diagnosis of the first Tunisian  
498           family with Alström syndrome. *Eur. J. Med. Genet.* 59, 444–451. doi:  
499           10.1016/J.EJMG.2016.08.004.
- 500   Charles, S. J., Moore, A. T., Yates, J. R. W., Green, T., and Clark, P. (1990). Alstrom’s  
501           syndrome: Further evidence of autosomal recessive inheritance and  
502           endocrinological dysfunction. *J. Med. Genet.* 27, 590–592. doi:  
503           10.1136/jmg.27.9.590.
- 504   Chen, J.-H., Geberhiwot, T., Barrett, T. G., Paisey, R., and Semple, R. K. (2017). Refining  
505           genotype-phenotype correlation in Alström syndrome through study of primary  
506           human fibroblasts. *Mol. Genet. genomic Med.* 5, 390–404. doi: 10.1002/mgg3.296.
- 507   Collin, G. B., Marshall, J. D., Ikeda, A., So, W. V., Russell-Eggitt, I., Maffei, P., et al. (2002).  
508           Mutations in ALMS1 cause obesity, type 2 diabetes and neurosensory degeneration  
509           in Alström syndrome. *Nat. Genet.* 31, 74–8. doi: 10.1038/ng867.
- 510   Collin, G. B., Marshall, J. D., King, B. L., Milan, G., Maffei, P., Jagger, D. J., et al. (2012).  
511           The Alström syndrome protein, ALMS1, interacts with  $\alpha$ -actinin and components of  
512           the endosome recycling pathway. *PLoS One* 7, e37925–e37925. doi:  
513           10.1371/journal.pone.0037925.
- 514   Corbetti, F., Razzolini, R., Bettini, V., Marshall, J. D., Naggert, J., Tona, F., et al. (2013).  
515           Alström Syndrome: Cardiac Magnetic Resonance findings. *Int. J. Cardiol.* 167, 1257–  
516           1263. doi: 10.1016/j.ijcard.2012.03.160.
- 517   Cruz-Aguilar, M., Galaviz-Hernández, C., Hiebert-Froese, J., Sosa-Macías, M., and  
518           Zenteno, J. C. (2017). A nonsense ALMS1 mutation underlies alström syndrome in  
519           an extended menonite kindred settled in north Mexico. *Genet. Test. Mol.*  
520           *Biomarkers* 21, 397–401. doi: 10.1089/gtmb.2016.0391.
- 521   Das Bhowmik, A., Gupta, N., Dalal, A., and Kabra, M. (2017). Whole exome sequencing  
522           identifies a homozygous nonsense variation in ALMS1 gene in a patient with  
523           syndromic obesity. *Obes. Res. Clin. Pract.* 11, 241–246. doi:

- 524 10.1016/j.orcp.2016.09.004.
- 525 Davies, G., Lam, M., Harris, S. E., Trampush, J. W., Luciano, M., Hill, W. D., et al. (2018).  
526 Study of 300,486 individuals identifies 148 independent genetic loci influencing  
527 general cognitive function. *Nat. Commun.* 9, 2098. doi: 10.1038/s41467-018-  
528 04362-x.
- 529 Dotan, G., Khetan, V., Marshall, J. D., Affel, E., Armiger-, D., Naggert, J. K., et al. (2018).  
530 Alström syndrome. 38, 440–445. doi: 10.1080/13816810.2016.1257029.Spectral-  
531 domain.
- 532 Fokkema, I. F. A. C., Taschner, P. E. M., Schaafsma, G. C. P., Celli, J., Laros, J. F. J., and den  
533 Dunnen, J. T. (2011). LOVD v.2.0: the next generation in gene variant databases.  
534 *Hum. Mutat.* 32, 557–563. doi: 10.1002/HUMU.21438.
- 535 Gao, F. J., Li, J. K., Chen, H., Hu, F. Y., Zhang, S. H., Qi, Y. H., et al. (2019). Genetic and  
536 Clinical Findings in a Large Cohort of Chinese Patients with Suspected Retinitis  
537 Pigmentosa. *Ophthalmology* 126, 1549–1556. doi: 10.1016/j.ophtha.2019.04.038.
- 538 Gatticchi, L., Miertus, J., Maltese, P. E., Bressan, S., De Antoni, L., Podracká, L., et al.  
539 (2020). A very early diagnosis of Alström syndrome by next generation sequencing.  
540 *BMC Med. Genet.* 21, 1–6. doi: 10.1186/s12881-020-01110-1.
- 541 Gogi, D., Bond, J., Long, V., Sheridan, E., and Woods, C. G. (2007). Exudative retinopathy  
542 in a girl with Alström syndrome due to a novel mutation. *Br. J. Ophthalmol.* 91, 983–  
543 984. doi: 10.1136/bjo.2005.088781.
- 544 Hamamy, H., Barham, M., Alkhaldeh, A. E. K., Cockburn, D., Snowden, H., and Ajlouni,  
545 K. (2006). Alstrom syndrome in four sibs from northern Jordan. *Ann. Saudi Med.* 26,  
546 480–483. doi: 10.5144/0256-4947.2006.480.
- 547 Hearn, T. (2018). ALMS1 and Alström syndrome: a recessive form of metabolic,  
548 neurosensory and cardiac deficits. *J. Mol. Med.* doi: 10.1007/s00109-018-1714-x.
- 549 Hearn, T., Renforth, G. L., Spalluto, C., Hanley, N. A., Piper, K., Brickwood, S., et al. (2002).  
550 Mutation of ALMS1, a large gene with a tandem repeat encoding 47 amino acids,  
551 causes Alström syndrome. *Nat. Genet.* 31, 79. Available at:

- 552 <https://doi.org/10.1038/ng874>.
- 553 Hirano, M., Satake, W., Moriyama, N., Saida, K., Okamoto, N., Cha, P. C., et al. (2020).  
554 Bardet–Biedl syndrome and related disorders in Japan. *J. Hum. Genet.* 65, 847–853.  
555 doi: 10.1038/s10038-020-0778-y.
- 556 Hitz, M. P., Bertram, H., Köditz, H., Görler, H., Happel, C. M., Wessel, A., et al. (2008).  
557 Levosimendan for bridging in a pediatric patient with Alström syndrome awaiting  
558 heart-lung transplantation. *Clin. Res. Cardiol.* 97, 846–848. doi: 10.1007/s00392-  
559 008-0691-4.
- 560 Hoffman, J. D., Jacobson, Z., Young, T. L., Marshall, J. D., and Kaplan, P. (2005). Familial  
561 variable expression of dilated cardiomyopathy in Alström syndrome: A report of  
562 four sibs. *Am. J. Med. Genet.* 135 A, 96–98. doi: 10.1002/ajmg.a.30688.
- 563 Holder, M., Hecker, W., and Gilli, G. (1995). Impaired glucose tolerance leads to delayed  
564 diagnosis of Alström syndrome. *Diabetes Care* 18, 698–700. doi:  
565 10.2337/diacare.18.5.698.
- 566 Hollander, S. A., Alsaleh, N., Ruzhnikov, M., Jensen, K., Rosenthal, D. N., Stevenson, D.  
567 A., et al. (2017). Variable clinical course of identical twin neonates with Alström  
568 syndrome presenting coincidentally with dilated cardiomyopathy. *Am. J. Med.*  
569 *Genet. Part A* 173, 1687–1689. doi: 10.1002/ajmg.a.38200.
- 570 Huang, L., Xiao, X., Li, S., Jia, X., Wang, P., Sun, W., et al. (2016). Molecular genetics of  
571 cone-rod dystrophy in Chinese patients: New data from 61 probands and mutation  
572 overview of 163 probands. *Exp. Eye Res.* 146, 252–258. doi:  
573 10.1016/j.exer.2016.03.015.
- 574 Hull, S., Kiray, G., Chiang, J. P. W., and Vincent, A. L. (2020). Molecular and phenotypic  
575 investigation of a New Zealand cohort of childhood-onset retinal dystrophy. *Am. J.*  
576 *Med. Genet. Part C Semin. Med. Genet.* 184, 708–717. doi: 10.1002/ajmg.c.31836.
- 577 Iannello, S., Bosco, P., Camuto, M., Cavaleri, A., Milazzo, P., and Belfiore, F. (2004). A  
578 mild form of Alstrom disease associated with metabolic syndrome and very high  
579 fasting serum free fatty acids: Two cases diagnosed in adult age. *Am. J. Med. Sci.*  
580 327, 284–288. doi: 10.1097/00000441-200405000-00031.



- 581 Jatti, K., Paisey, R., and More, R. (2012). Coronary artery disease in Alström syndrome.  
582 *Eur. J. Hum. Genet.* 20, 117–118. doi: 10.1038/ejhg.2011.168.
- 583 Jinda, W., Taylor, T. D., Suzuki, Y., Thongnoppakhun, W., Limwongse, C., Lertrit, P., et al.  
584 (2017). Whole exome sequencing in eight Thai patients with leber congenital  
585 amaurosis reveals mutations in the CTNNA1 and CYP4V2 genes. *Investig.*  
586 *Ophthalmol. Vis. Sci.* 58, 2413–2420. doi: 10.1167/iovs.16-21322.
- 587 Joy, T., Cao, H., Black, G., Malik, R., Charlton-Menys, V., Hegele, R. A., et al. (2007).  
588 Alstrom syndrome (OMIM 203800): a case report and literature review. *Orphanet*  
589 *J. Rare Dis.* 2, 49. doi: 10.1186/1750-1172-2-49.
- 590 Kamal, N. M., Sahly, A. N., Banaganapalli, B., Rashidi, O. M., Shetty, P. J., Al-Aama, J. Y.,  
591 et al. (2020). Whole exome sequencing identifies rare biallelic ALMS1 missense and  
592 stop gain mutations in familial Alström syndrome patients. *Saudi J. Biol. Sci.* 27,  
593 271–278. doi: 10.1016/j.sjbs.2019.09.006.
- 594 Karczewski, K. J., Francioli, L. C., Tiao, G., Cummings, B. B., Alföldi, J., Wang, Q., et al.  
595 (2020). The mutational constraint spectrum quantified from variation in 141,456  
596 humans. *Nat.* 2020 5817809 581, 434–443. doi: 10.1038/s41586-020-2308-7.
- 597 Katagiri, S., Yoshitake, K., Akahori, M., Hayashi, T., Furuno, M., Nishino, J., et al. (2013).  
598 Whole-exome sequencing identifies a novel ALMS1 mutation (p.Q2051X) in two  
599 Japanese brothers with Alström syndrome. *Mol. Vis.* 19, 2393–2406. Available at:  
600 <https://www.ncbi.nlm.nih.gov/pubmed/24319333>.
- 601 Kaya, A., Orbak, Z., Çayır, A., Doñeray, H., Taşdemir, Ş., Ozanürk, A., et al. (2014).  
602 Combined occurrence of Alström syndrome and bronchiectasis. *Pediatrics* 133. doi:  
603 10.1542/peds.2013-0284.
- 604 Kerr, T. P., Sewry, C. A., Robb, S. A., and Roberts, R. G. (2001). Long mutant dystrophins  
605 and variable phenotypes: evasion of nonsense-mediated decay? *Hum. Genet.* 109,  
606 402–407. doi: 10.1007/s004390100598.
- 607 Khan, A. O., Bifari, I. N., and Bolz, H. J. (2015). Ophthalmic Features of Children Not Yet  
608 Diagnosed with Alstrom Syndrome. *Ophthalmology* 122, 1726-1727.e2. doi:  
609 10.1016/j.ophtha.2015.03.001.

- 610 Khoo, E. Y. H., Risley, J., Zaitoun, A. M., El-Sheikh, M., Paisey, R. B., Acheson, A. G., et al.  
611 (2009). Alström syndrome and cecal volvulus in 2 siblings. *Am. J. Med. Sci.* 337, 383–  
612 385. doi: 10.1097/MAJ.0b013e3181926594.
- 613 Kilinc, S., Yucel-Yilmaz, D., Ardagil, A., Apaydin, S., Valverde, D., Ozgul, R. K., et al. (2018).  
614 Five novel ALMS1 gene mutations in six patients with Alstrom syndrome. *J. Pediatr.*  
615 *Endocrinol. Metab.* 31, 681–687. doi: 10.1515/jpem-2017-0418.
- 616 Kilpinen, H., Goncalves, A., Leha, A., Afzal, V., Alasoo, K., Ashford, S., et al. (2017).  
617 Common genetic variation drives molecular heterogeneity in human iPSCs. *Nature*  
618 546, 370–375. doi: 10.1038/nature22403.
- 619 Kim, M. K., Kwak, S. H., Kang, S., Jung, H. S., Cho, Y. M., Kim, S. Y., et al. (2015).  
620 Identification of two cases of ciliopathy-associated diabetes and their mutation  
621 analysis using whole exome sequencing. *Diabetes Metab. J.* 39, 439–443. doi:  
622 10.4093/dmj.2015.39.5.439.
- 623 Koç, E., Bayrak, G., Suher, M., Ensari, C., Aktas, D., and Ensari, A. (2006). Rare case of  
624 Alstrom syndrome without obesity and with short stature, diagnosed in adulthood.  
625 *Nephrology* 11, 81–84. doi: 10.1111/j.1440-1797.2006.00443.x.
- 626 Kocova, M., Sukarova-Angelovska, E., Kacarska, R., Maffei, P., Milan, G., and Marshall, J.  
627 D. (2011). The unique combination of dermatological and ocular phenotypes in  
628 Alström syndrome: severe presentation, early onset and two novel ALMS1  
629 mutations. *Br. J. Dermatol.* 164, 878–880. doi: 10.1111/j.1365-2133.2010.10157.x.
- 630 Koray, F., Dorter, C., Benderli, Y., Satman, I., Yilmaz, T., Dinccag, N., et al. (2001). Alstrom  
631 syndrome: a case report. *J. Oral Sci.* 43, 221–224. doi: 10.2334/josnusd.43.221.
- 632 Kuburović, V., Marshall, J. D., Collin, G. B., Nykamp, K., Kuburović, N., Milenković, T., et  
633 al. (2013). Differences in the clinical spectrum of two adolescent male patients with  
634 Alström syndrome. *Clin. Dysmorphol.* 22, 7–12. doi:  
635 10.1097/MCD.0b013e32835b9017.
- 636 Kvarnung, M., Taylan, F., Nilsson, D., Anderlid, B. M., Malmgren, H., Lagerstedt-  
637 Robinson, K., et al. (2018). Genomic screening in rare disorders: New mutations and  
638 phenotypes, highlighting ALG14 as a novel cause of severe intellectual disability.

- 639 *Clin. Genet.* 94, 528–537. doi: 10.1111/cge.13448.
- 640 Landrum, M. J., Lee, J. M., Benson, M., Brown, G. R., Chao, C., Chitipiralla, S., et al. (2018).  
641 ClinVar: improving access to variant interpretations and supporting evidence.  
642 *Nucleic Acids Res.* 46, D1062–D1067. doi: 10.1093/NAR/GKX1153.
- 643 Laxer, C., Rahman, S. A., Sherif, M., Tahir, S., Cayir, A., Demirbilek, H., et al. (2016). A  
644 novel ALMS1 homozygous mutation in two Turkish brothers with Alström  
645 syndrome. *J. Pediatr. Endocrinol. Metab.* 29, 585–589. doi: 10.1515/jpem-2015-  
646 0249.
- 647 Lazar, C. H., Kimchi, A., Namburi, P., Mutsuddi, M., Zelinger, L., Beryozkin, A., et al.  
648 (2015). Nonsyndromic Early-Onset Cone-Rod Dystrophy and Limb-Girdle Muscular  
649 Dystrophy in a Consanguineous Israeli Family are Caused by Two Independent yet  
650 Linked Mutations in ALMS1 and DYSF. *Hum. Mutat.* 36, 836–841. doi:  
651 10.1002/humu.22822.
- 652 Lefter, M., Vis, J. K., Vermaat, M., den Dunnen, J. T., Taschner, P. E. M., and Laros, J. F. J.  
653 (2021). Mutalyzer 2: next generation HGVS nomenclature checker. *Bioinformatics*  
654 37, 2811–2817. doi: 10.1093/bioinformatics/btab051.
- 655 Liang, X., Li, H., Li, H., Xu, F., Dong, F., and Sui, R. (2013). Novel ALMS1 mutations in  
656 Chinese patients with alström syndrome. *Mol. Vis.* 19, 1885–1891.
- 657 Lindeboom, R. G. H., Supek, F., and Lehner, B. (2016). The rules and impact of nonsense-  
658 mediated mRNA decay in human cancers. *Nat. Genet.* 2016 4810 48, 1112–1118.  
659 doi: 10.1038/ng.3664.
- 660 Lindsey, S., Brewer, C., Stakhovskaya, O., Kim, H. J., Zalewski, C., Bryant, J., et al. (2017).  
661 Auditory and otologic profile of Alström syndrome: Comprehensive single center  
662 data on 38 patients. *Am. J. Med. Genet. Part A* 173, 2210–2218. doi:  
663 10.1002/ajmg.a.38316.
- 664 Liu, L., Dong, B., Chen, X., Li, J., and Li, Y. (2009). Identification of a novel ALMS1 mutation  
665 in a Chinese family with Alström syndrome. *Eye* 23, 1210–1212. doi:  
666 10.1038/eye.2008.235.

- 667 Lombardo, B., D'Argenio, V., Monda, E., Vitale, A., Caiazza, M., Sacchetti, L., et al. (2020).  
668 Genetic analysis resolves differential diagnosis of a familial syndromic dilated  
669 cardiomyopathy: A new case of Alström syndrome. *Mol. Genet. Genomic Med.* 8,  
670 1–7. doi: 10.1002/mgg3.1260.
- 671 Long, P. A., Evans, J. M., Olson, T. M., Gartstein., M. A., Putnam., S., and Kliever., R.  
672 (2015). Exome sequencing establishes diagnosis of Alström syndrome in an infant  
673 presenting with non-syndromic dilated cardiomyopathy. *Am. J. Med. Genet. A* 176,  
674 886–890. doi: 10.1002/ajmg.a.36994.Exome.
- 675 Louw, J. J., Corveleyn, A., Jia, Y., Iqbal, S., Boshoff, D., Gewillig, M., et al. (2014).  
676 Homozygous loss-of-function mutation in ALMS1 causes the lethal disorder  
677 mitogenic cardiomyopathy in two siblings. *Eur. J. Med. Genet.* 57, 532–535. doi:  
678 10.1016/j.ejmg.2014.06.004.
- 679 Lu, P., Zhang, Y., Niu, H., and Wang, Y. (2021). Upregulated Long Non-coding RNA  
680 ALMS1-IT1 Promotes Neuroinflammation by Activating NF-κB Signaling in Ischemic  
681 Cerebral Injury. *Curr. Pharm. Des.* 27, 4270–4277. doi:  
682 10.2174/1381612827666210827104316.
- 683 Luan, T., Zhang, T. Y., Lv, Z. H., Guan, B. X., Xu, J. Y., Li, J., et al. (2021). The lncRNA ALMS1-  
684 IT1 may promote malignant progression of lung adenocarcinoma via AVL9-  
685 mediated activation of the cyclin-dependent kinase pathway. *FEBS Open Bio* 11,  
686 1504–1515. doi: 10.1002/2211-5463.13140.
- 687 Mahamid, J., Lorber, A., Horovitz, Y., Shalev, S. A., Collin, G. B., Naggert, J. K., et al. (2013).  
688 Extreme clinical variability of dilated cardiomyopathy in two siblings with alström  
689 syndrome. *Pediatr. Cardiol.* 34, 455–458. doi: 10.1007/s00246-012-0296-6.
- 690 Malm, E., Ponjavic, V., Nishina, P. M., Naggert, J. K., Hinman, E. G., Andréasson, S., et al.  
691 (2008). Full-field electroretinography and marked variability in clinical phenotype  
692 of Alström syndrome. *Arch. Ophthalmol.* 126, 51–57. doi:  
693 10.1001/archophthalmol.2007.28.
- 694 Maltese, P. E., Iarossi, G., Ziccardi, L., Colombo, L., Buzzonetti, L., Crinò, A., et al. (2018).  
695 A Next Generation Sequencing custom gene panel as first line diagnostic tool for

- 696 atypical cases of syndromic obesity: Application in a case of Alström syndrome. *Eur.*  
697 *J. Med. Genet.* 61, 79–83. doi: 10.1016/j.ejmg.2017.10.016.
- 698 Marshall, J. D., Beck, S., Maffei, P., and Naggert, J. K. (2007a). Alström Syndrome. *Eur. J.*  
699 *Hum. Genet.* 15, 1193. doi: 10.1038/sj.ejhg.5201933.
- 700 Marshall, J. D., Bronson, R. T., Collin, G. B., Nordstrom, A. D., Maffei, P., Paisey, R. B., et  
701 al. (2005). New Alström syndrome phenotypes based on the evaluation of 182  
702 cases. *Arch. Intern. Med.* 165, 675–83. doi: 10.1001/archinte.165.6.675.
- 703 Marshall, J. D., Hinman, E. G., Collin, G. B., Beck, S., Cerqueira, R., Maffei, P., et al.  
704 (2007b). Spectrum of ALMS1 variants and evaluation of genotype-phenotype  
705 correlations in Alström syndrome. *Hum. Mutat.* 28, 1114–23. doi:  
706 10.1002/humu.20577.
- 707 Marshall, J. D., Maffei, P., Collin, G. B., and Naggert, J. K. (2011). Alström syndrome:  
708 genetics and clinical overview. *Curr. Genomics* 12, 225–235. doi:  
709 10.2174/138920211795677912.
- 710 Marshall, J. D., Muller, J., Collin, G. B., Milan, G., Kingsmore, S. F., Dinwiddie, D., et al.  
711 (2015). Alström Syndrome: Mutation Spectrum of ALMS1. *Hum. Mutat.* 36, 660–  
712 668. doi: 10.1002/humu.22796.
- 713 Muring, L., Porter, L. F., Pelletier, V., Riehm, A., Leuvrey, A. S., Gouronc, A., et al. (2020).  
714 Atypical Retinal Phenotype in a Patient With Alström Syndrome and Biallelic Novel  
715 Pathogenic Variants in ALMS1, Including a de novo Variation. *Front. Genet.* 11. doi:  
716 10.3389/fgene.2020.00938.
- 717 Mei, J., Cao, G., He, H., Chang, J., Zhang, B., and Mei, Y. (2021). Effects of long non-coding  
718 RNA ALMS1-IT1 on the proliferation and migration of colorectal cancer cells via  
719 regulating the expressions of miRNA-889-3p and ATAD2. *Cancer Res. Clin.* 33, 818–  
720 823. doi: 10.3760/CMA.J.CN115355-20210601-00242.
- 721 Millay, R. H., Weleber, R. G., and Heckenlively, J. R. (1986). Ophthalmologic and systemic  
722 manifestations of Alström’s disease. *Am. J. Ophthalmol.* 102, 482–490. doi:  
723 10.1016/0002-9394(86)90078-4.

- 724 Minton, J. A. L., Owen, K. R., Ricketts, C. J., Crabtree, N., Shaikh, G., Ehtisham, S., et al.  
725 (2006). Syndromic obesity and diabetes: Changes in body composition with age and  
726 mutation analysis of ALMS1 in 12 United Kingdom kindreds with Alström syndrome.  
727 *J. Clin. Endocrinol. Metab.* 91, 3110–3116. doi: 10.1210/jc.2005-2633.
- 728 Nasser, F., Weisschuh, N., Maffei, P., Milan, G., Heller, C., Zrenner, E., et al. (2018).  
729 Ophthalmic features of cone-rod dystrophy caused by pathogenic variants in the  
730 ALMS1 gene. *Acta Ophthalmol.* 96, e445–e454. doi: 10.1111/aos.13612.
- 731 Niederlova, V., Modrak, M., Tsyklauri, O., Huranova, M., and Stepanek, O. (2019). Meta-  
732 analysis of genotype-phenotype associations in Bardet-Biedl syndrome uncovers  
733 differences among causative genes. *Hum. Mutat.* 40, 2068–2087. doi:  
734 10.1002/HUMU.23862.
- 735 Nikopoulos, K., Butt, G. U., Farinelli, P., Mudassar, M., Domènech-Estévez, E., Samara,  
736 C., et al. (2016). A large multiexonic genomic deletion within the ALMS1 gene  
737 causes Alström syndrome in a consanguineous Pakistani family. *Clin. Genet.* 89,  
738 510–511. doi: 10.1111/cge.12645.
- 739 Ozantürk, A., Marshall, J. D., Collin, G. B., Düzenli, S., Marshall, R. P., Candan, Ş., et al.  
740 (2014). The phenotypic and molecular genetic spectrum of Alström syndrome in 44  
741 Turkish kindreds and a literature review of Alström syndrome in Turkey. *J. Hum.*  
742 *Genet.* 60, 1–9. doi: 10.1038/jhg.2014.85.
- 743 Özgül, R. K., Satman, I., Collin, G. B., Hinman, E. G., Marshall, J. D., Kocaman, O., et al.  
744 (2007). Molecular analysis and long-term clinical evaluation of three siblings with  
745 Alström syndrome. *Clin. Genet.* 72, 351–356. doi: 10.1111/j.1399-  
746 0004.2007.00848.x.
- 747 Paisey, R. B., Carey, C. M., Bower, L., Marshall, J., Taylor, P., Maffei, P., et al. (2004).  
748 Hypertriglyceridaemia in Alström’s syndrome: Causes and associations in 37 cases.  
749 *Clin. Endocrinol. (Oxf).* 60, 228–231. doi: 10.1111/j.1365-2265.2004.01952.x.
- 750 Patel, S., Minton, J. A. L., Weedon, M. N., Frayling, T. M., Ricketts, C., Hitman, G. A., et  
751 al. (2006). Common variations in the ALMS1 gene do not contribute to susceptibility  
752 to type 2 diabetes in a large white UK population. *Diabetologia* 49, 1209–1213. doi:

- 753 10.1007/s00125-006-0227-2.
- 754 Piñeiro-Gallego, T., Cortón, M., Ayuso, C., Baiget, M., and Valverde, D. (2012). Molecular  
755 approach in the study of Alström syndrome: analysis of ten Spanish families. *Mol.*  
756 *Vis.* 18, 1794–1802. Available at:  
757 <https://www.ncbi.nlm.nih.gov/pubmed/22876109>.
- 758 Redin, C., Le Gras, S., Mhamdi, O., Geoffroy, V., Stoetzel, C., Vincent, M. C., et al. (2012).  
759 Targeted high-throughput sequencing for diagnosis of genetically heterogeneous  
760 diseases: Efficient mutation detection in Bardet-Biedl and Alström Syndromes. *J.*  
761 *Med. Genet.* 49, 502–512. doi: 10.1136/jmedgenet-2012-100875.
- 762 Rethanavelu, K., Fung, J. L. F., Chau, J. F. T., Pei, S. L. C., Chung, C. C. Y., Mak, C. C. Y., et  
763 al. (2020). Phenotypic and mutational spectrum of 21 Chinese patients with  
764 Alström syndrome. *Am. J. Med. Genet. Part A* 182, 279–288. doi:  
765 10.1002/ajmg.a.61412.
- 766 Russell-Eggitt, I. M., Clayton, P. T., Coffey, R., Kriss, A., Taylor, D. S. I., and Taylor, J. F. N.  
767 (1998). Alstrom syndrome: Report of 22 cases and literature review.  
768 *Ophthalmology* 105, 1274–1280. doi: 10.1016/S0161-6420(98)97033-6.
- 769 Saadah, O. I., Banaganapalli, B., Kamal, N. M., Sahly, A. N., Alsufyani, H. A., Mohammed,  
770 A., et al. (2021). Identification of a Rare Exon 19 Skipping Mutation in ALMS1 Gene  
771 in Alström Syndrome Patients From Two Unrelated Saudi Families. *Front. Pediatr.*  
772 9, 1–9. doi: 10.3389/fped.2021.652011.
- 773 Sanchez-Navarro, I., R. J. da Silva, L., Blanco-Kelly, F., Zurita, O., Sanchez-Bolivar, N.,  
774 Villaverde, C., et al. (2018). Combining targeted panel-based resequencing and  
775 copy-number variation analysis for the diagnosis of inherited syndromic  
776 retinopathies and associated ciliopathies. *Sci. Rep.* 8, 5285. doi: 10.1038/s41598-  
777 018-23520-1.
- 778 Sanyoura, M., Woudstra, C., Halaby, G., Baz, P., Senée, V., Guillausseau, P. J., et al.  
779 (2014). A novel ALMS1 splice mutation in a non-obese juvenile-onset insulin-  
780 dependent syndromic diabetic patient. *Eur. J. Hum. Genet.* 22, 140–143. doi:  
781 10.1038/ejhg.2013.87.

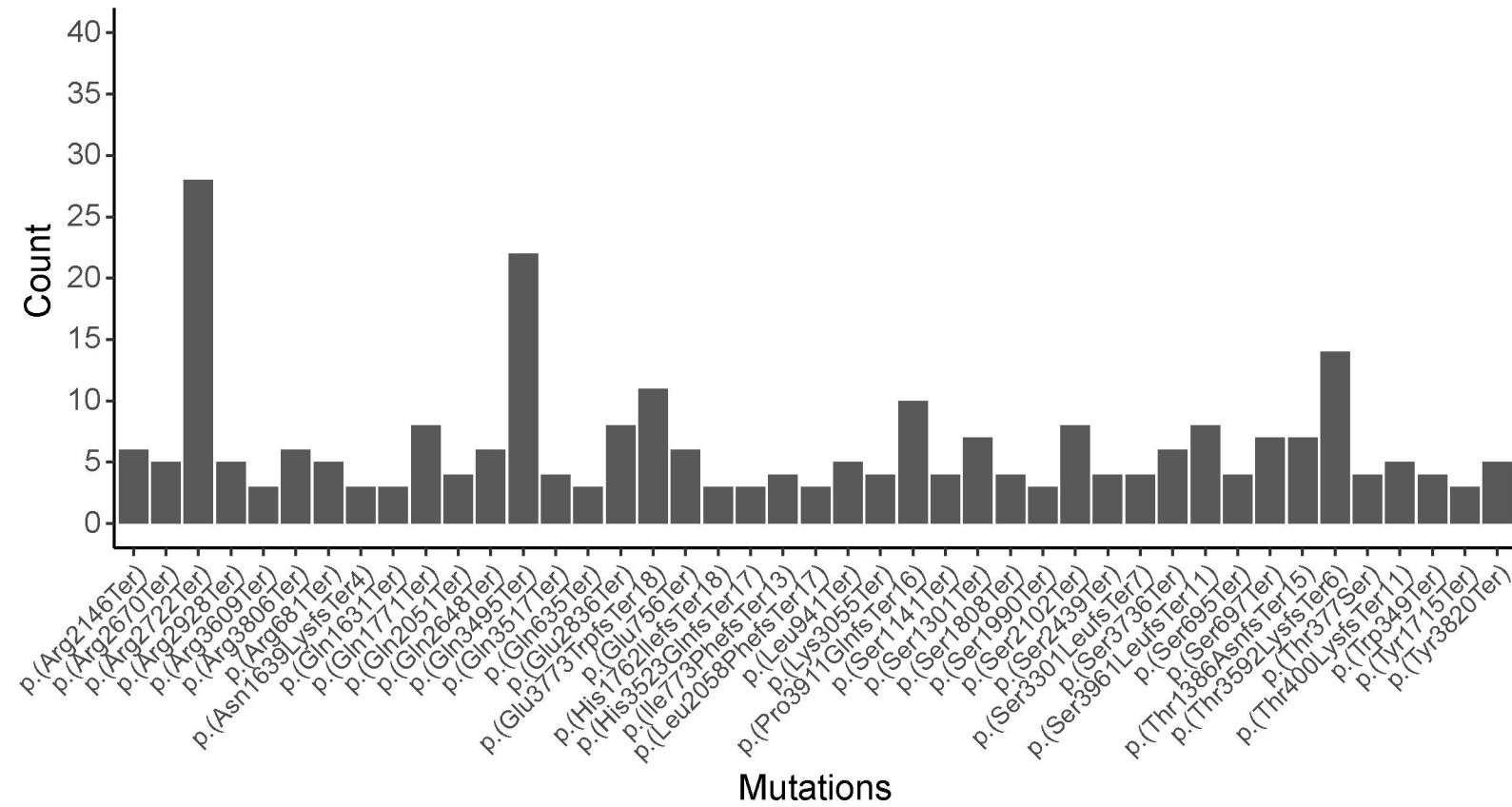
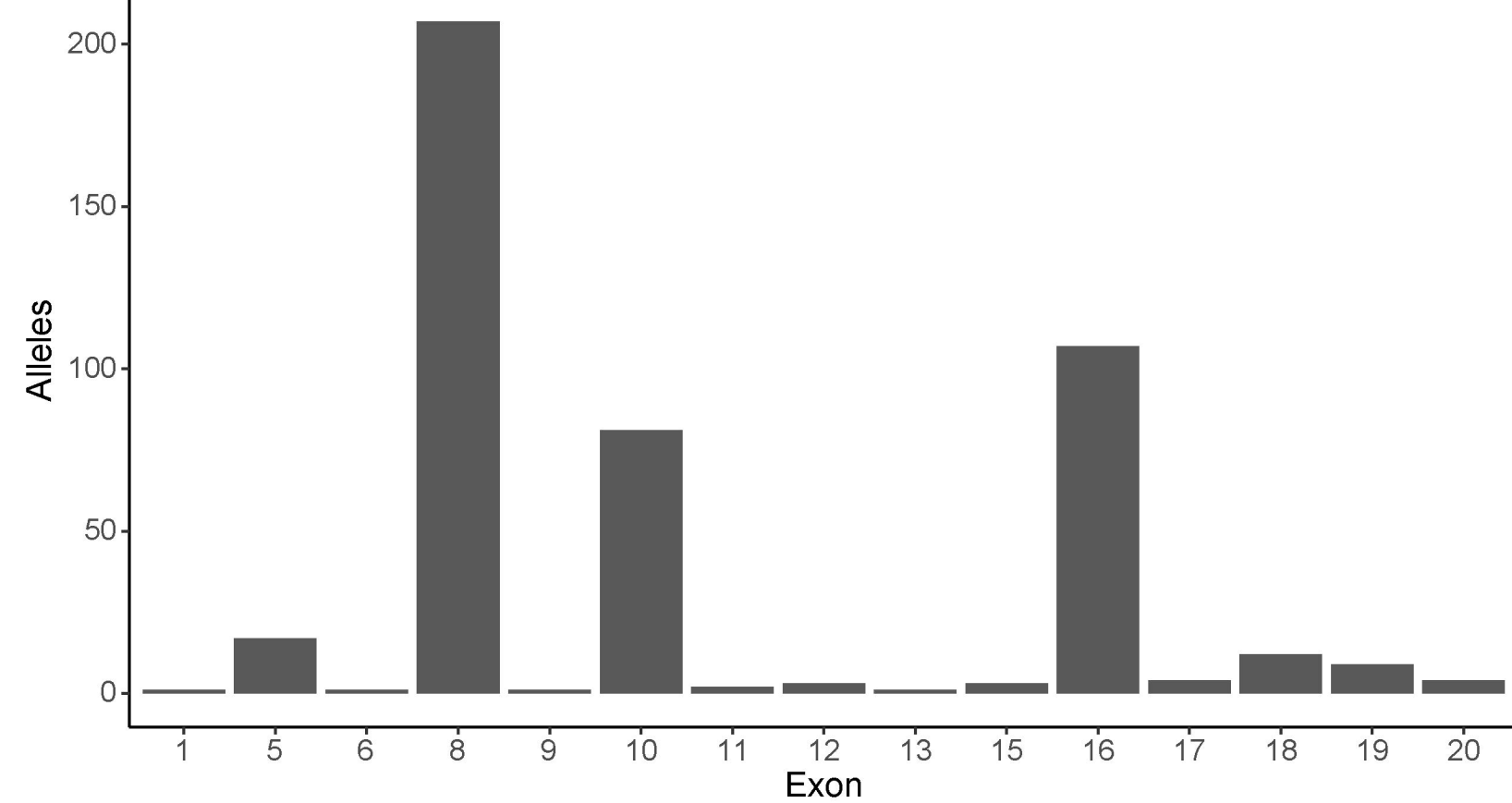
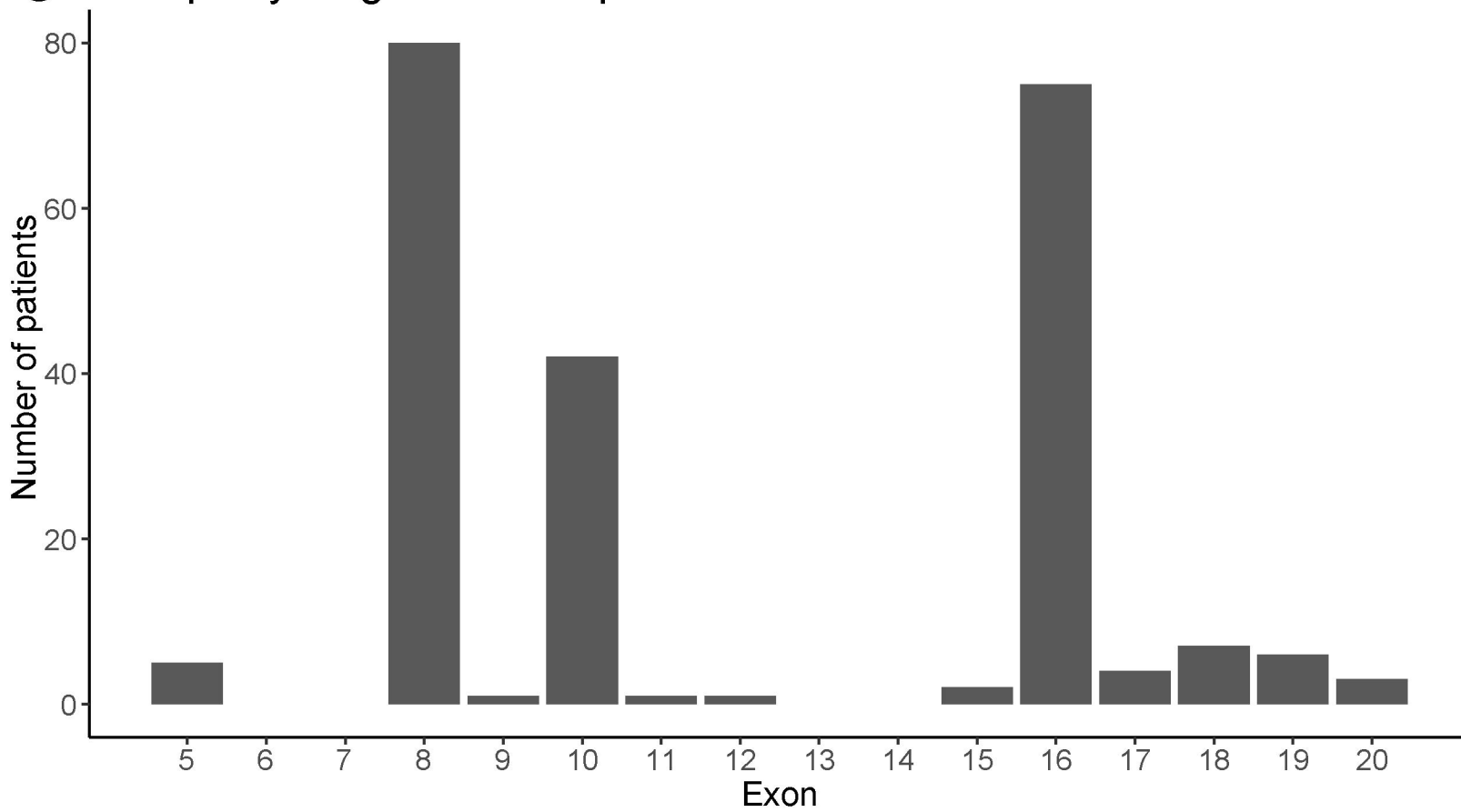
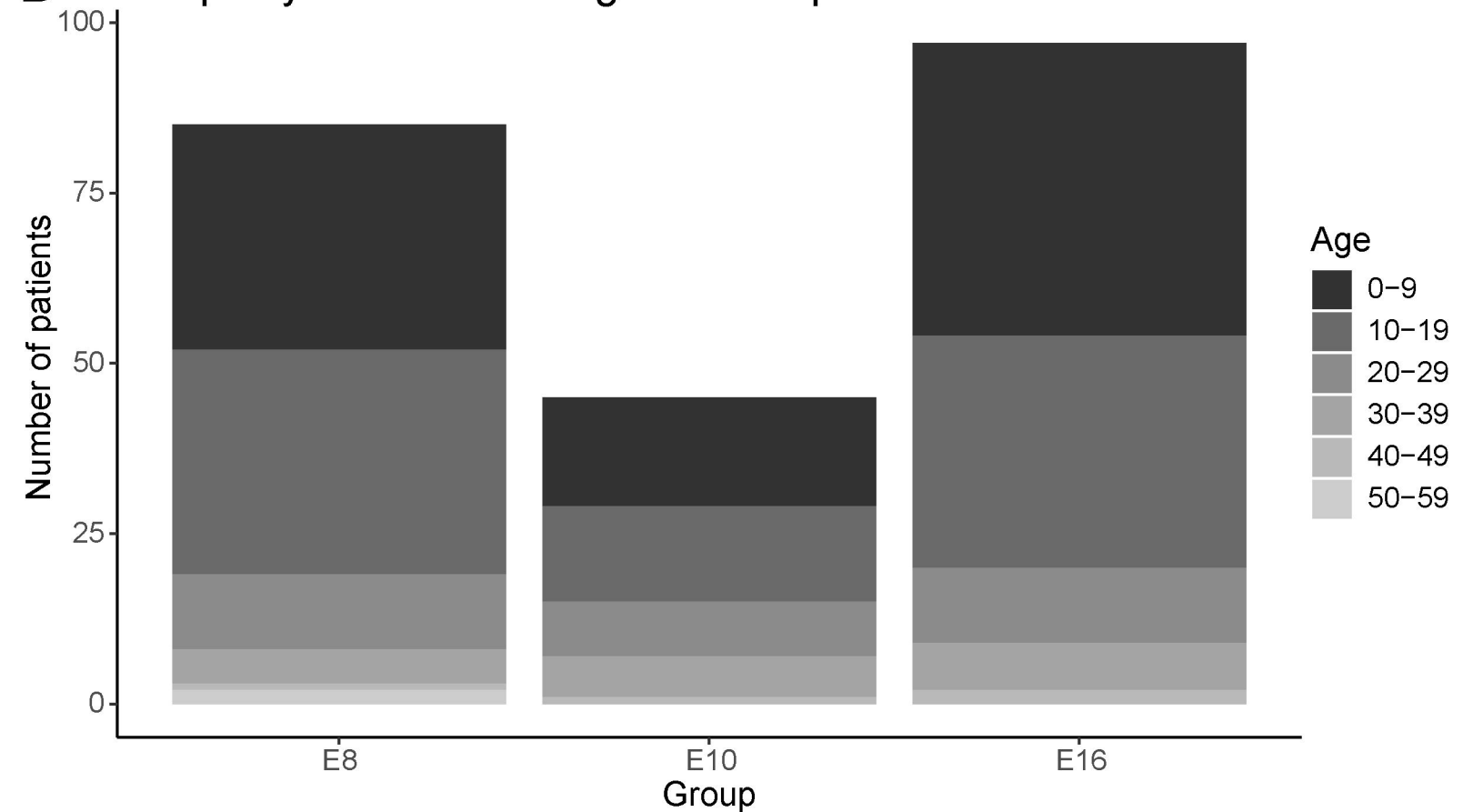
- 782 Sathya Priya, C., Sen, P., Umashankar, V., Gupta, N., Kabra, M., Kumaramanickavel, G.,  
783 et al. (2015). Mutation spectrum in BBS genes guided by homozygosity mapping in  
784 an Indian cohort. *Clin. Genet.* 87, 161–166. doi: 10.1111/cge.12342.
- 785 Satman, I., Yilmaz, M. T., Gürsoy, N., Karşıdağ, K., Dinççağ, N., Ovalı, T., et al. (2002).  
786 Evaluation of insulin resistant diabetes mellitus in Alström syndrome: A long-term  
787 prospective follow-up of three siblings. *Diabetes Res. Clin. Pract.* 56, 189–196. doi:  
788 10.1016/S0168-8227(02)00004-9.
- 789 Sawyer, S. L., Hartley, T., Dymont, D. A., Beaulieu, C. L., Schwartzentruber, J., Smith, A.,  
790 et al. (2016). Utility of whole-exome sequencing for those near the end of the  
791 diagnostic odyssey: time to address gaps in care. *Clin. Genet.* 89, 275–284. doi:  
792 10.1111/CGE.12654.
- 793 Shurygina, M. F., Parker, M. A., Schlechter, C. L., Chen, R., Li, Y., Weleber, R. G., et al.  
794 (2019). A case report of two siblings with Alstrom syndrome without hearing loss  
795 associated with two new ALMS1 variants. *BMC Ophthalmol.* 19, 1–9. doi:  
796 10.1186/s12886-019-1259-y.
- 797 Silan, F., Gur, S., Kadioglu, L. E., Yalcintepe, S. A., Ukinc, K., Uludag, A., et al. (2013).  
798 Characteristic findings of alstrom syndrome with a case report. *Open J. Clin.*  
799 *Diagnostics* 03, 75–77. doi: 10.4236/ojcd.2013.33014.
- 800 Spinelli, V., Girolami, F., Marrone, C., Consigli, V., Iascone, M., Passantino, S., et al.  
801 (2020). A rare case of pediatric cardiomyopathy: Alström syndrome identified by  
802 gene panel analysis. *Clin. Case Reports* 8, 3369–3373. doi: 10.1002/ccr3.3327.
- 803 Srikrupa, N. N., Sripriya, S., Pavithra, S., Sen, P., Gupta, R., and Mathavan, S. (2021).  
804 Whole-exome sequencing identifies two novel ALMS1 mutations in Indian patients  
805 with Leber congenital amaurosis. *Hum. Genome Var.* 8. doi: 10.1038/s41439-021-  
806 00143-z.
- 807 Supek, F., Lehner, B., and Lindeboom, R. G. H. (2021). To NMD or Not To NMD:  
808 Nonsense-Mediated mRNA Decay in Cancer and Other Genetic Diseases. *Trends*  
809 *Genet.* 37, 657–668. doi: 10.1016/J.TIG.2020.11.002.
- 810 Taokesen, M., Collin, G. B., Evsikov, A. V., Güzel, A., Özgül, R. K., Marshall, J. D., et al.

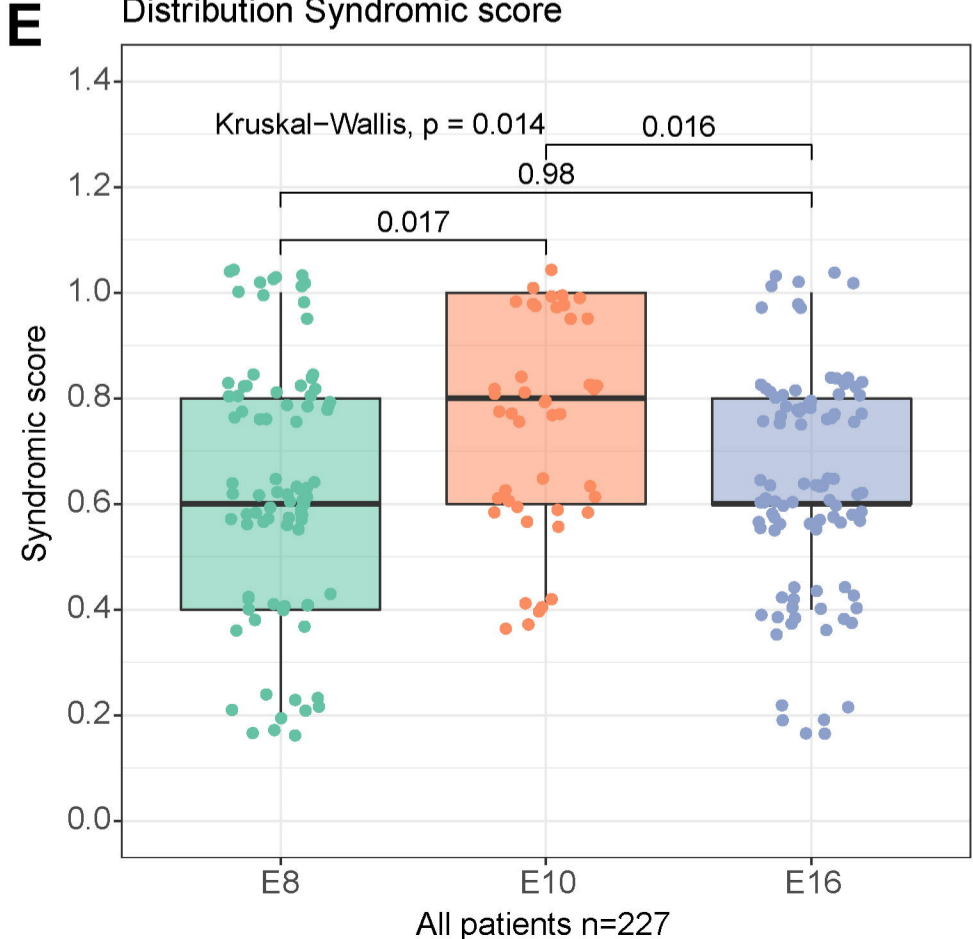
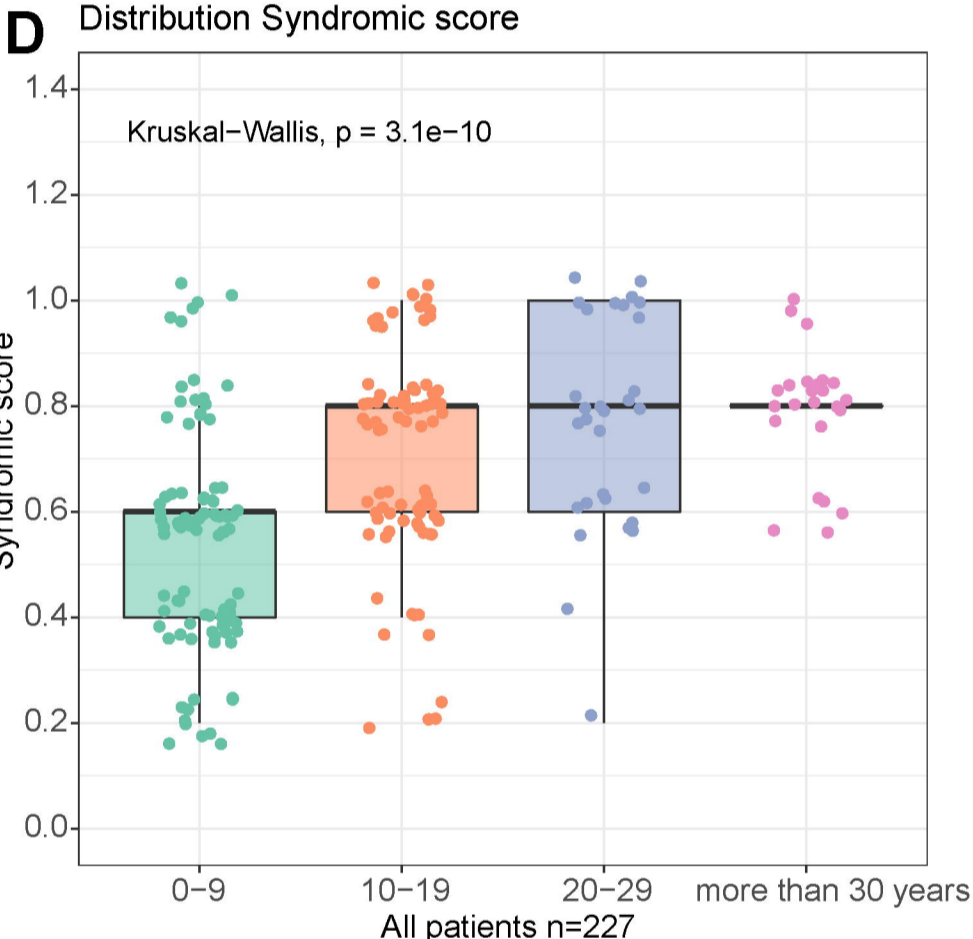
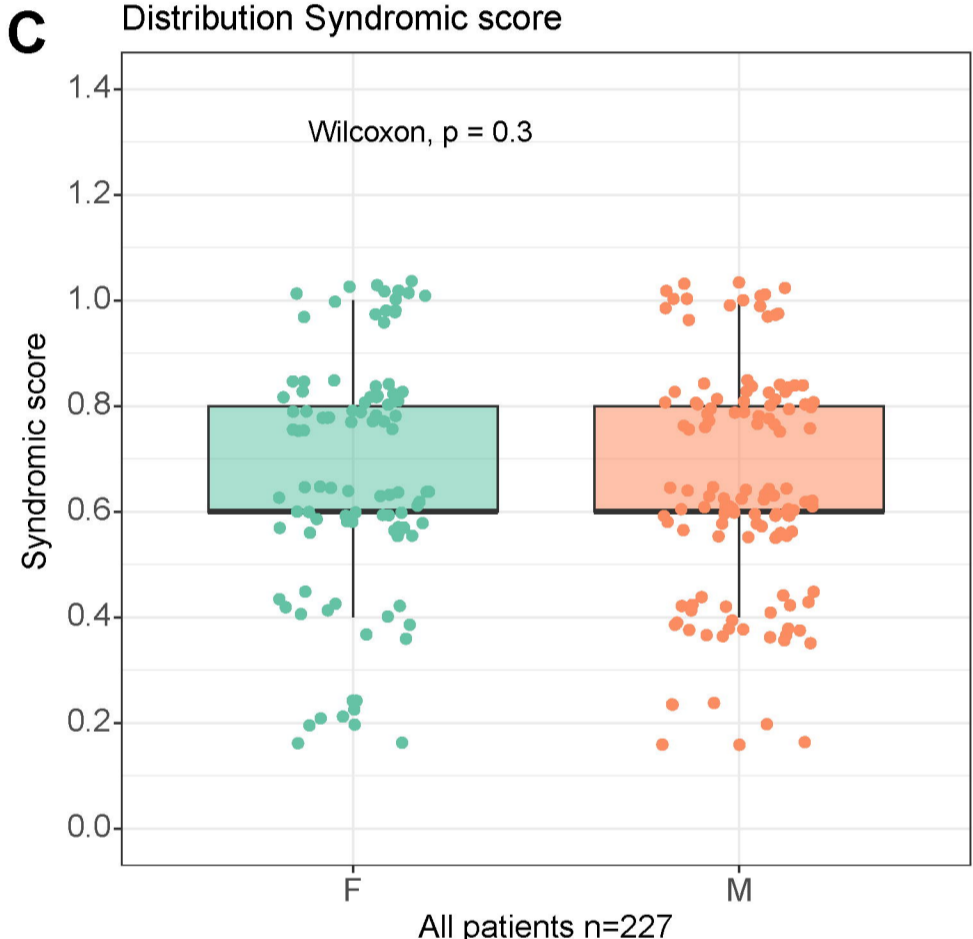
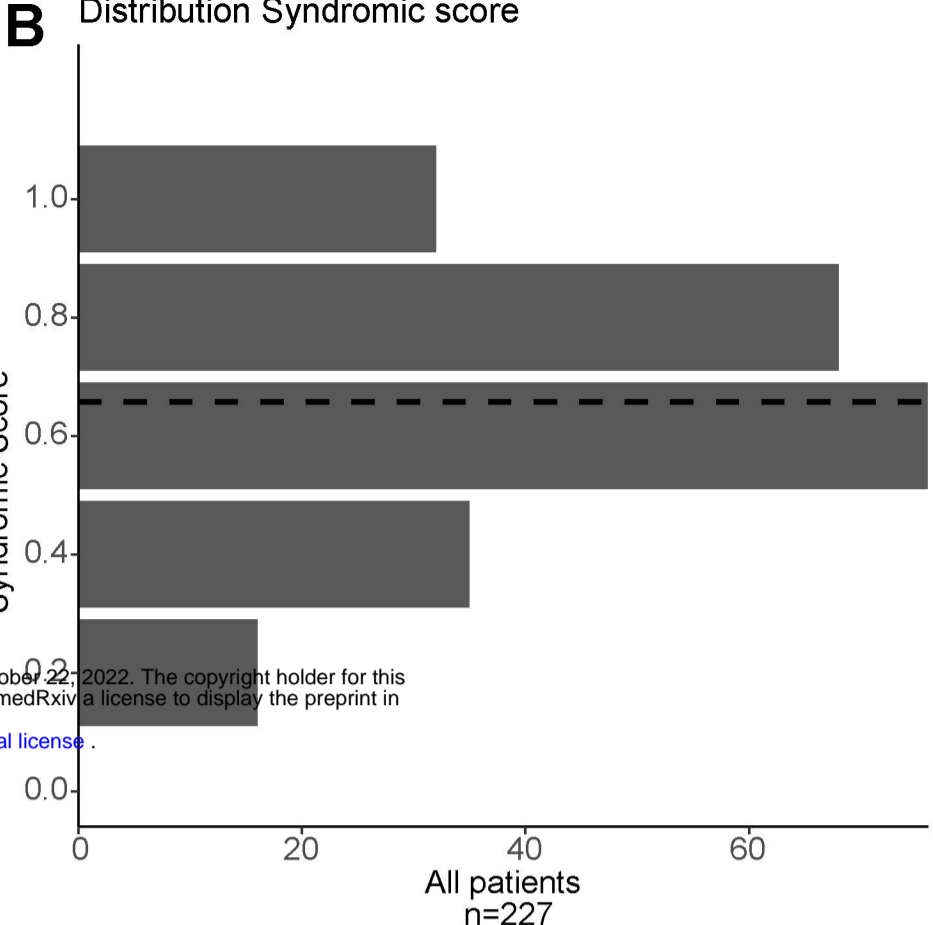
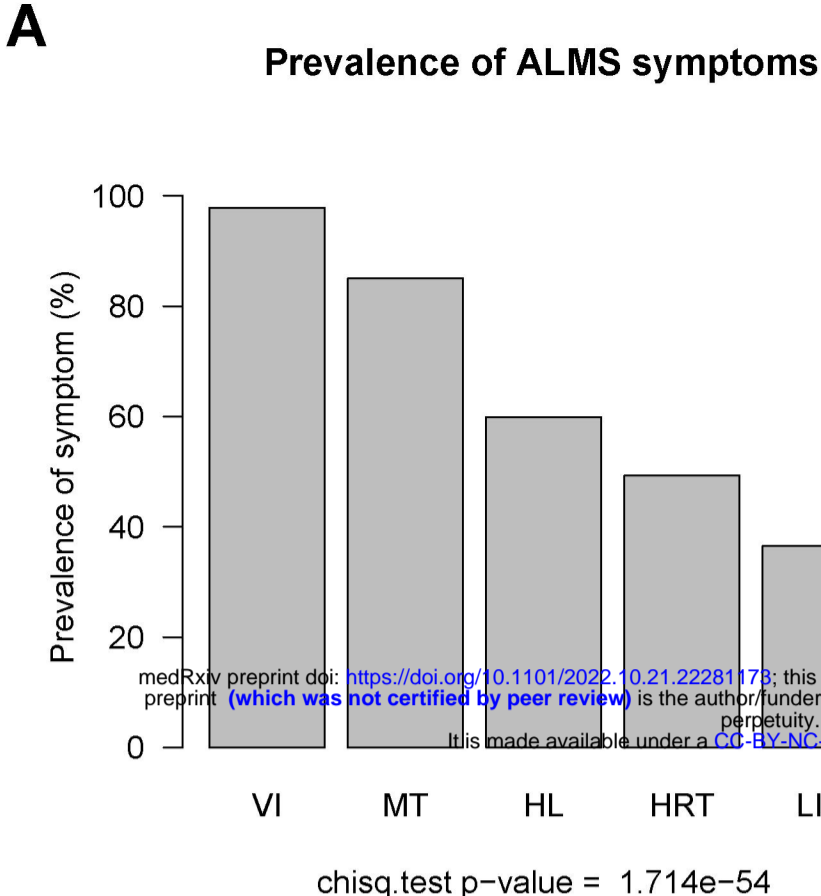


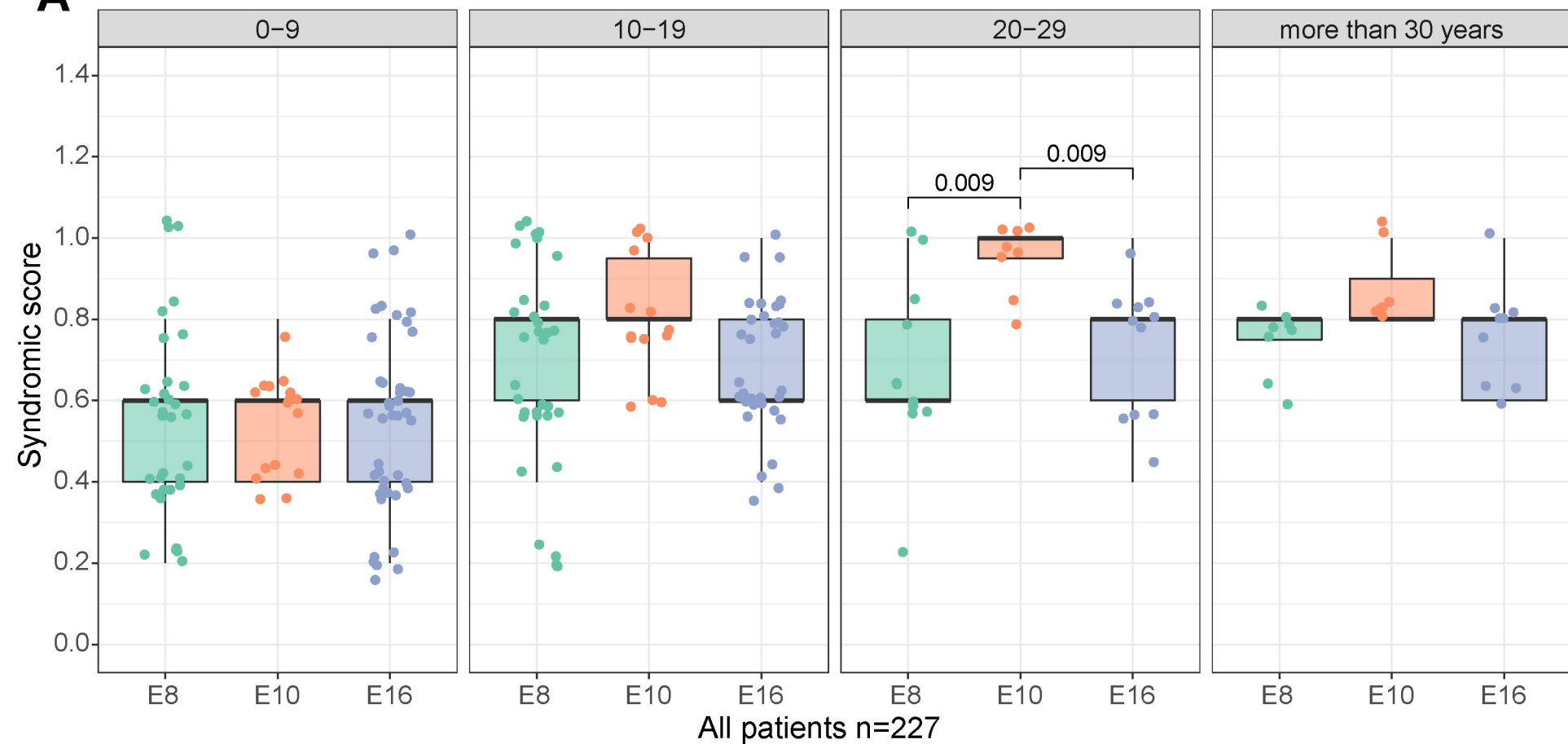
- 811 (2012). Novel Alu retrotransposon insertion leading to Alström syndrome. *Hum.*  
812 *Genet.* 131, 407–413. doi: 10.1007/s00439-011-1083-9.
- 813 Taşdemir, S., Güzel-Ozantürk, A., Marshall, J., Collin, G., Özgül, R., Narin, N., et al. (2013).  
814 Atypical presentation and a novel mutation in ALMS1: implications for clinical and  
815 molecular diagnostic strategies for Alström syndrome. *Clin. Genet.* 83, 96–98. doi:  
816 10.1111/J.1399-0004.2012.01883.X.
- 817 Titomanlio, L., De Brasi, D., Buoninconti, A., Sperandeo, M. P., Pepe, A., Andria, G., et al.  
818 (2004). Alström syndrome: Intrafamilial phenotypic variability in sibs with a novel  
819 nonsense mutation of the ALMS1 gene [3]. *Clin. Genet.* 65, 156–157. doi:  
820 10.1111/j.0009-9163.2004.00204.x.
- 821 Torkamandi, S., Rezaei, S., Mirfakhraei, R., Askari, M., Piltan, S., and Gholami, M. (2020).  
822 Whole exome sequencing identified two homozygous ALMS1 mutations in an  
823 Iranian family with Alström syndrome. *Gene* 727, 144228. doi:  
824 10.1016/j.gene.2019.144228.
- 825 Tsai, M. C., Yu, H. W., Liu, T., Chou, Y. Y., Chiou, Y. Y., and Chen, P. C. (2018). Rare  
826 compound heterozygous frameshift mutations in ALMS1 gene identified through  
827 exome sequencing in a Taiwanese patient with Alström syndrome. *Front. Genet.* 9,  
828 1–5. doi: 10.3389/fgene.2018.00110.
- 829 van Breugel, M., Rosa e Silva, I., and Andreeva, A. (2022). Structural validation and  
830 assessment of AlphaFold2 predictions for centrosomal and centriolar proteins and  
831 their complexes. *Commun. Biol.* 5, 1–10. doi: 10.1038/s42003-022-03269-0.
- 832 Waldman, M., Han, J. C., Reyes-Capo, D. P., Bryant, J., Carson, K. A., Turkbey, B., et al.  
833 (2018). Alström syndrome: Renal findings in correlation with obesity, insulin  
834 resistance, dyslipidemia and cardiomyopathy in 38 patients prospectively  
835 evaluated at the NIH clinical center. *Mol. Genet. Metab.* 125, 181–191. doi:  
836 10.1016/j.ymgme.2018.07.010.
- 837 Wang, C., Luo, X., Wang, Y., Liu, Z., Wu, S., Wang, S., et al. (2021). Novel mutations of  
838 the ALMS1 gene in patients with alström syndrome. *Intern. Med.* 60, 3721–3728.  
839 doi: 10.2169/internalmedicine.6467-20.

- 840 Wang, S., Zhang, Q., Zhang, X., Wang, Z., and Zhao, P. (2016a). Clinical and genetic  
841 characteristics of Leber congenital amaurosis with novel mutations in known genes  
842 based on a Chinese eastern coast Han population. *Graefe's Arch. Clin. Exp.*  
843 *Ophthalmol.* 254, 2227–2238. doi: 10.1007/s00417-016-3428-5.
- 844 Wang, X., Feng, Y., Li, J., Zhang, W., Wang, J., Lewis, R. A., et al. (2016b). Retinal diseases  
845 caused by mutations in genes not specifically associated with the clinical diagnosis.  
846 *PLoS One* 11, 1–12. doi: 10.1371/journal.pone.0165405.
- 847 Wang, X., Wang, H., Cao, M., Li, Z., Chen, X., Patenia, C., et al. (2011). Whole-exome  
848 sequencing identifies ALMS1, IQCB1, CNGA3, and MYO7A mutations in patients  
849 with Leber congenital amaurosis. *Hum. Mutat.* 32, 1450–1459. doi:  
850 10.1002/humu.21587.
- 851 Weiss, S., Cohen, L., Ben-Yosef, T., Ehrenberg, M., and Goldenberg-Cohen, N. (2019).  
852 Late diagnosis of Alstrom syndrome in a Yemenite-Jewish child. *Ophthalmic Genet.*  
853 40, 7–11. doi: 10.1080/13816810.2018.1561900.
- 854 Wicher, K., Bajon, T., Wawrocka, A., Skorczyk-Werner, A., Niedziela, M., and  
855 Krawczynski, M. R. (2017). Alström syndrome: A case report of the Polish family and  
856 a brief review of the differential diagnosis. *Pediatr. Pol.* 92, 781–785. doi:  
857 10.1016/j.pepo.2017.07.003.
- 858 Worthley, M. I., and Zeitz, C. J. (2001). Case of Alström syndrome with late presentation  
859 dilated cardiomyopathy. *Intern. Med. J.* 31, 569–570. doi: 10.1046/j.1445-  
860 5994.2001.00140.x.
- 861 Wu, W. C., Chen, S. C., Dia, C. Y., Yu, M. L., Hsieh, M. Y., Lin, Z. Y., et al. (2003). Alström  
862 syndrome with acute pancreatitis: A case report. *Kaohsiung J. Med. Sci.* 19, 358–  
863 360. doi: 10.1016/s1607-551x(09)70438-3.
- 864 Xu, Y., Guan, L., Xiao, X., Zhang, J., Li, S., Jiang, H., et al. (2016). ALMS1 null mutations: A  
865 common cause of Leber congenital amaurosis and early-onset severe cone-rod  
866 dystrophy. *Clin. Genet.* 89, 442–447. doi: 10.1111/cge.12617.
- 867 Yang, L., Li, Z., Mei, M., Fan, X., Zhan, G., Wang, H., et al. (2017). Whole genome  
868 sequencing identifies a novel ALMS1 gene mutation in two Chinese siblings with

- 869 Alström syndrome. *BMC Med. Genet.* 18, 1–6. doi: 10.1186/s12881-017-0418-3.
- 870 Zhang, J. J., Wang, J. Q., Sun, M. Q., Xu, D., Xiao, Y., Lu, W. L., et al. (2021). Alström  
871 syndrome with a novel mutation of ALMS1 and Graves' hyperthyroidism: A case  
872 report and review of the literature. *World J. Clin. Cases* 9, 3200–3211. doi:  
873 10.12998/wjcc.v9.i13.3200.
- 874 Zhou, C., Xiao, Y., Xie, H., Liu, S., and Wang, J. (2020). A novel variant in ALMS1 in a  
875 patient with Alström syndrome and prenatal diagnosis for the fetus in the family: A  
876 case report and literature review. *Mol. Med. Rep.* 22, 3271–3276. doi:  
877 10.3892/mmr.2020.11398.
- 878 Zmyslowska, A., Borowiec, M., Antosik, K., Ploski, R., Ciechanowska, M., Iwaniszewska,  
879 B., et al. (2016). Genetic evaluation of patients with Alström syndrome in the Polish  
880 population. *Clin. Genet.* 89, 448–453. doi: 10.1111/cge.12656.
- 881

**A** Count of mutations in ALMS cohort**B** Number of mutated alleles in ALMS1 exons**C** Groups by longest transcript**D** Groups by clusterised longest transcript



**A** Distribution Syndromic score**B** Prevalence by symptom in each group