

Appendix 1: additional methods, figures, and small tables

Contents of this file:

Additional Methods:

1. MoBa study details
2. Genotyping and imputation
3. Genetic quality control
4. Multiple imputation of phenotypes
5. Polygenic score construction
6. Model equations

Additional Results:

1. Comparison of analytic sample and excluded participants

Additional Figures:

Appendix 1 – Figure 1. Flow chart of inclusion and exclusion of MoBa participants into the study sample

Appendix 1 – Figure 2. Association of child's BMI polygenic scores with principal components of ancestry

Appendix 1 – Figure 3. Associations of child's BMI polygenic scores with ancestry, adjusted for parental polygenic scores.

Additional Tables:

Appendix 1 – Table 1. Descriptive statistics of full MoBa sample

Appendix 1 – Table 2. Descriptive statistics of analytic sample, unimputed data

Appendix 1 – Table 3. BMI and symptoms of depression, anxiety, and ADHD at age 8, adult BMI PGS

Appendix 1 – Table 4. BMI and symptoms of depression, anxiety, and ADHD at age 8, childhood body size PGS

Appendix 1 – Table 5. Associations of polygenic scores within parental pairs

Appendix 1 – Table 6. BMI and symptoms of depression, anxiety, and ADHD at age 8, adult BMI PGS, log-transformed outcomes

Appendix 1 – Table 7. BMI and symptoms of depression, anxiety, and ADHD at age 8, childhood body size PGS, log-transformed outcomes

Appendix 1 – Table 8. Robustness checks for classic MR models

Appendix 1 – Table 9. Robustness checks for within-family MR (within-family MR) models

Appendix 1 – Table 10. BMI and symptoms of depression, anxiety, and ADHD at age 8 in MoBa, adult BMI PGS, complete-case analysis

Appendix 1 – Table 11. BMI and symptoms of depression, anxiety, and ADHD at age 8 in MoBa, childhood body size PGS, complete-case analysis

Appendix 1 – Table 12. Non-genetic associations of BMI quintiles with symptoms of depression, anxiety, and ADHD at age 8 in MoBa

Appendix 1 – Table 13. BMI and symptoms of depression, anxiety, and ADHD at age 8, adult BMI PGS, adjusted for parental education

Appendix 1 – Table 14. BMI and symptoms of depression, anxiety, and ADHD at age 8, childhood body size PGS, adjusted for parental education

The following large tables are provided in a separate excel file (Supplementary File 1):

Supplementary File 1a. SNPs used in the polygenic score for adult BMI

Supplementary File 1b. SNPs used in the polygenic score for childhood body size

Supplementary File 1c. SNPs used in the polygenic score for depression

Supplementary File 1d. SNPs used in the polygenic score for ADHD

Additional Methods

1. MoBa study details

This study is based on the Norwegian Mother, Father and Child Cohort Study (MoBa) and uses data from the Medical Birth Registry of Norway (MBRN). The Medical Birth Registry (MBRN) is a national health registry containing information about all births in Norway. The current analysis is based on version 12 of the quality-assured data files released for research in January 2019. The establishment of MoBa and initial data collection was based on a license from the Norwegian Data Protection Agency and approval from The Regional Committees for Medical and Health Research Ethics. The MoBa cohort is now based on regulations related to the Norwegian Health Registry Act. The current study was approved by The Regional Committees for Medical and Health Research Ethics (2016/1702).

The Norwegian Mother, Father and Child Cohort Study is supported by the Norwegian Ministry of Health and Care Services and the Ministry of Education and Research. We are grateful to all the participating families in Norway who take part in this on-going cohort study.

2. Genotyping

Genotyping of MoBa has been conducted through multiple research projects, spanning several years. The research projects (HARVEST, SELECTIONpreDISPOSED, and NORMENT) provided genotype data to MoBa Genetics. In total, 238,001 MoBa samples were sent to be genotyped in 24 genotyping batches. This was carried out at 3 centres (1. Genomics Core Facility, Trondheim, Norway, 2. ERASMUS MC, Rotterdam, Netherlands, and 3. deCODE Genetics, Reykjavik, Iceland) using six genotyping arrays. The 24 batches had varying selection criteria; this included a batch of ADHD child cases and their parents, and another of matched control children and their parents. Detailed information on batch selection and the genotyping process are described elsewhere (Corfield et al. 2022).

3. Genetic quality control

Pre-imputation QC, phasing, imputation, and post-imputation QC were carried out according to the MoBaPsychGen pipeline, which includes QC on both single nucleotide polymorphism (SNP) and individual level, and whose full details are provided elsewhere (Corfield et al. 2022). Output of the pipeline included 207,569 unique individuals and 6,981,748 SNPs after post-imputation QC; unique individuals comprised 76,577 children, 53,358 fathers, and 77,634 mothers. Phasing and imputation were performed using the publicly available Haplotype Reference Consortium release 1.1 panel as a reference. Information from the Medical Birth Registry of Norway and MoBa questionnaires were used to identify biological sex, year of birth, reported parent-offspring (PO) relationships, and, in the offspring generation, multiple births. Ancestry outliers were identified based on principal component analysis with the 1000 Genomes phase 1 unrelated data (1,083 individuals) (Auton et al. 2015). Approximately 95% of the participants were identified as having European ancestry. Ancestry outliers were removed based on visual inspection, using pairwise plots for the first seven principal components. Similarly, principal component analysis was used to identify substructure within each subpopulation of all MoBa batches. PCs were first estimated in founders only, and non-founders

projected into the PC space of the founders. Outliers were removed based on visual inspection, using pairwise plots for the first ten principal components.

Relatedness was inferred using KING version 2.2.5(Manichaikul et al. 2010). In the presence of admixture, KING accurately infers MZ twin or duplicate pairs (kinship coefficient > 0.3540), first-degree (PO, FS, DZ twin pairs; kinship coefficient range $0.1770 - 0.3540$), second-degree (HS, GO, AUNN; kinship coefficient range $0.0884 - 0.1770$), and third-degree (first cousins; kinship coefficient range $0.0442 - 0.0884$) relationships. After within-family and between-family relationships were confirmed by genetic data, a check for Mendelian errors (ME) was performed in PLINK. The ME check included families with one or two parents present in the data. Families with $> 5\%$ errors and SNPs with $> 1\%$ errors were removed. The remaining ME were set to missing.

4. Multiple imputation

Multiple imputation by chained equations was performed in STATAv16 to estimate missing phenotypic information for the 40,949 trios with complete genetic data. 100 imputed datasets were produced and analysis across these datasets conducted with STATA's mi estimate commands. The imputation model included all BMI variables used in the main analyses (child's BMI at age 8, mother's pre-pregnancy BMI and father's BMI as reported at 17 weeks gestation), the child's sex and year of birth, and other phenotypic covariates used in non-genetic models, including mother's and father's smoking status reported at 17 weeks gestation, mother's and father's depressive/anxiety symptoms (using selected items from the 25-item Hopkins Checklist(Hesbacher et al. 1980)), and ADHD symptoms (from the 6-item adult ADHD self-report scale(Kessler et al. 2005)), maternal parity at the child's birth, and family socioeconomic characteristics, including parental educational qualifications and categorical variables of income and subjective financial strain. Variables from the birth registry file were also included as auxiliary variables: the mother's marital status, the age of the mother and father, and the child's birthweight and length. Approximately normally-distributed continuous variables including BMI were imputed using truncated regression, specifying as upper and lower limits the smallest and largest values observed in the full MoBa sample. Ordered categorical variables were imputed with ordered logistic regression. There was no missingness in genetic information within the analytic sample. Polygenic scores for adult BMI, childhood body size, depression, ADHD, and educational attainment were included on the right-hand side of the imputation equations, along with indicators for genotyping centre and chip and the 20 principal components of ancestry for all individuals. Continuous variables which were not normally-distributed were imputed with predictive mean matching, specifying `knn(10)`. This included child's depressive and anxiety symptoms at age 8 (SMFQ and SCARED summary scores), mother's and father's depressive/anxiety symptoms at 17 weeks gestation (summary scores based on items from the 25-item Hopkins Checklist(Hesbacher et al. 1980), and mother's and father's ADHD symptoms from the 6-item adult ADHD self-report scale(Kessler et al. 2005). To facilitate analysis of ADHD inattention and hyperactivity subscales, the two subscales were imputed, again with predictive mean matching, and the full scale calculated post-imputation with mi passive. An earlier measure of the child's ADHD symptoms at 5yrs, based on questions from the Short-Form Conners Parent Rating Scale(Kumar and Steer 2003), was included as an auxiliary variable. The percentage of imputed data in the analytic sample for each variable was: mother's education 3.4%, father's education 2.2%, mother's smoking 2.0%, father's smoking 0.7%, mother's depressive symptoms 3.2%, father's depressive symptoms 7.1%, mother's ADHD symptoms 40.9%, father's ADHD symptoms 60.1%, mother's BMI: 4.0%, father's BMI: 3.8%, child's BMI at age 8: 60.6%, child's depressive symptoms at age 8: 54.2%, child's anxiety symptoms at age 8: 54.1%, child's ADHD symptoms (inattention and hyperactivity) both 54.1%.

5. Polygenic score construction

Beginning with the full GWAS results for each phenotype (Yengo et al. 2018; Richardson et al. 2020; Wray et al. 2018; Demontis et al. 2019), R was used to subset SNPs included in full GWAS results to SNPs also available in the quality controlled MoBa data. From SNPs available in both, independent genome-wide significant associations were identified by clumping in MRBase, specifying $r=0.01$ and $p < 5.0 \times 10^{-8}$ (Hemani et al. 2018). First subsetting to SNPs available in MoBa and then clumping within these avoids the need for an additional step identifying proxy SNPs. This left 954 SNPs associated with adult BMI, and 321 associated with childhood body size.

Dosage data for MoBa participants for the genetic variants relevant to each polygenic score were extracted from the final quality controlled -bfiles using PLINK, and .raw files imported to STATA. SNPs were harmonized by comparing effect alleles in the GWAS and reference alleles in MoBa.

Polygenic scores were calculated as the sum of the number of effect alleles (0, 1, or 2) multiplied in each case by the harmonized SNP-coefficient from the GWAS. There was a very small amount of missingness in individual SNPs due to quality control measures. Among SNPs included in the adult BMI PGS, the median proportion of individuals missing the SNP was 0.001 and the maximum 0.04. For SNPs included in the childhood body size PGS, equivalent values were 0.002 and 0.04, for SNPs included in the depression and the ADHD PGS these were 0.003 and 0.01. Where individual SNP information was missing for an individual, the sample mean for the number of effect alleles (between 0 and 2) was added for that SNP.

6. Model equations

In within-family MR models, we used polygenic scores for all members of a child-mother-child trio to instrument the BMI of all three individuals. Within-families MR models were adjusted for child's sex, the first 20 principal components of ancestry for the child and both parents, and the genotyping chip and centre of the child and both parents.

In Stata, this was specified in the form:

```
ivregress 2sls outcome (c_bmi m_bmi f_bmi = c_pgs m_pgs f_pgs) sex c_PC* m_PC* f_PC*  
c_genotyping_centre* m_genotyping_centre* f_genotyping_centre* c_genotyping_chip* m_  
genotyping_chip* f_genotyping_chip*
```

This can be represented with the following equations:

The outcomes (depressive, anxiety, and ADHD symptoms) can be expressed as:

$$y_i = \beta_0 + \beta_1 X_{ic} + \beta_2 X_{im} + \beta_3 X_{if} + \beta_c C + e_i$$

The three exposures are offspring's, mother's, and father's BMI:

$$X_{ic} = \gamma_{oc} + \gamma_{1c} Z_{ic} + \gamma_{2c} Z_{im} + \gamma_{3c} Z_{if} + \gamma_{4c} C + v_{ic}$$

$$X_{im} = \gamma_{om} + \gamma_{1m} Z_{ic} + \gamma_{2m} Z_{im} + \gamma_{3m} Z_{if} + \gamma_{4m} C + v_{im}$$

$$X_{if} = \gamma_{of} + \gamma_{1f} Z_{ic} + \gamma_{2f} Z_{im} + \gamma_{3f} Z_{if} + \gamma_{4f} C + v_{if}$$

where:

y_i =outcome

X_{ic} =child's BMI

X_{im} =mother's BMI

X_{if} =father's BMI

Z_{ic} =child's polygenic score

Z_{im} =mother's polygenic score

Z_{if} =father's polygenic score

C =covariates including principal components for offspring, mother and father and genotyping centre and chip

e_i = error term for the outcome equation

v_{ic} = error term for the child exposure (BMI) equation

v_{im} = error term for the mother exposure (BMI) equation

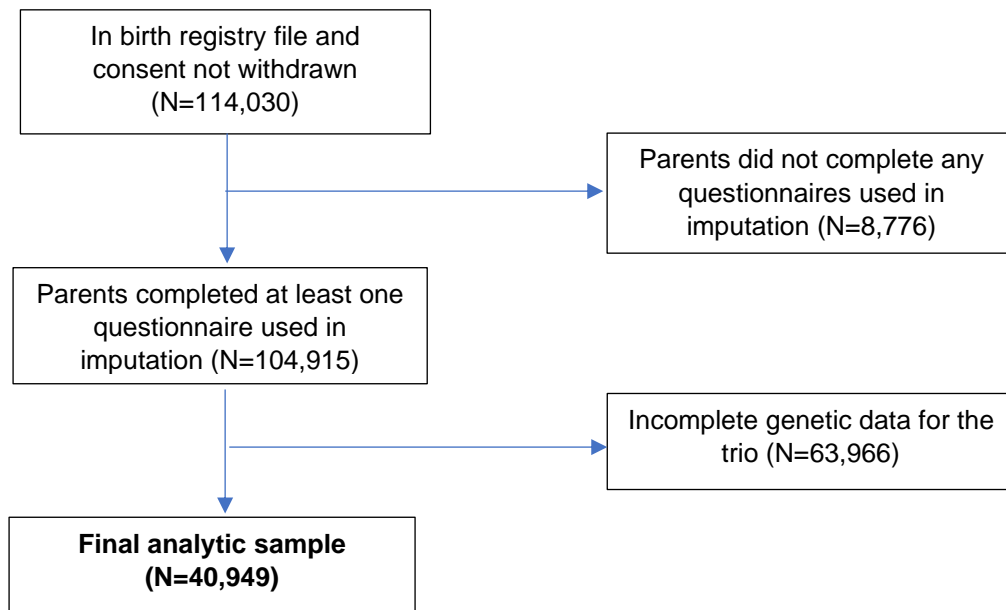
v_{if} = error term for the father exposure (BMI) equation

Additional Results

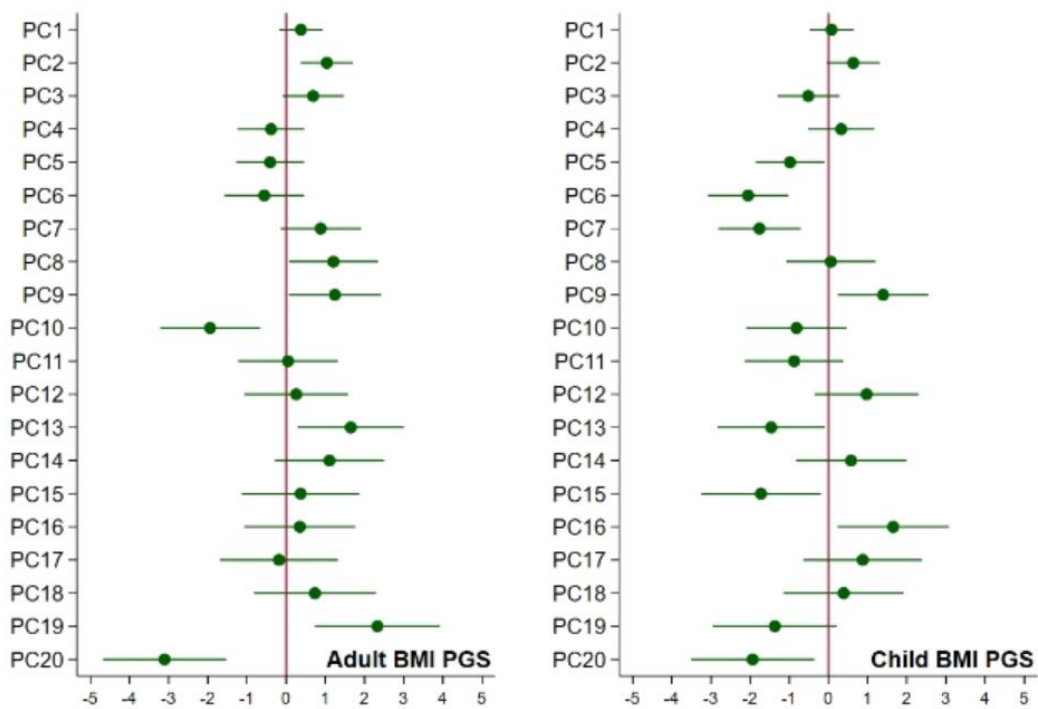
1. Comparison of analytic sample and excluded participants

To assess if participants included in the analytic sample (N=40,949) differed from others in the birth registry file (N=72,742) (Appendix 1 - Figure 1), we conducted t-tests and chi-squared tests for key characteristics at birth, BMI, and outcomes using unimputed data. Reflecting the large size of the sample population, several differences reached statistical significance. Children in the analytic sample did not differ from those excluded on sex but were slightly older (mean year of birth: 2005.4 vs 2004.5). They had slightly higher birthweight (mean=3.6kg vs 3.4kg) and slightly younger fathers (mean paternal 32.6 vs 32.8 years). Mothers and fathers included in the analytic sample had slightly higher educational qualifications (e.g., 24.1% and 24.3% of mothers and fathers respectively had 4 years of college education, against 21.0% and 21.5% for those not included). At the time of the child's birth, mothers in the analytic sample had fewer existing children (e.g., 46.8% vs 42.4% had none), were more likely to be married or cohabiting (97.4% vs 94.4%), and less likely to have smoked in pregnancy (e.g., daily smoking: 4.5% vs 6.3%). Fathers in the analytic sample were also more likely to have stopped smoking during the pregnancy (20.9% vs 15.8%). There was little of a difference in BMI for mothers, fathers, or children. Children in the analytic sample had slightly lower depressive symptoms (mean SMFQ=1.81 vs 1.91), anxiety symptoms (mean SCARED: 1.04 vs 1.00), and ADHD symptoms (mean RS-DBD ADHD: 8.4 vs 8.7). Descriptive characteristics of the full MoBa sample are in Appendix 1 - Table 1.

Appendix 1 - Figure 1: Flow chart of inclusion and exclusion of MoBa participants into the study sample

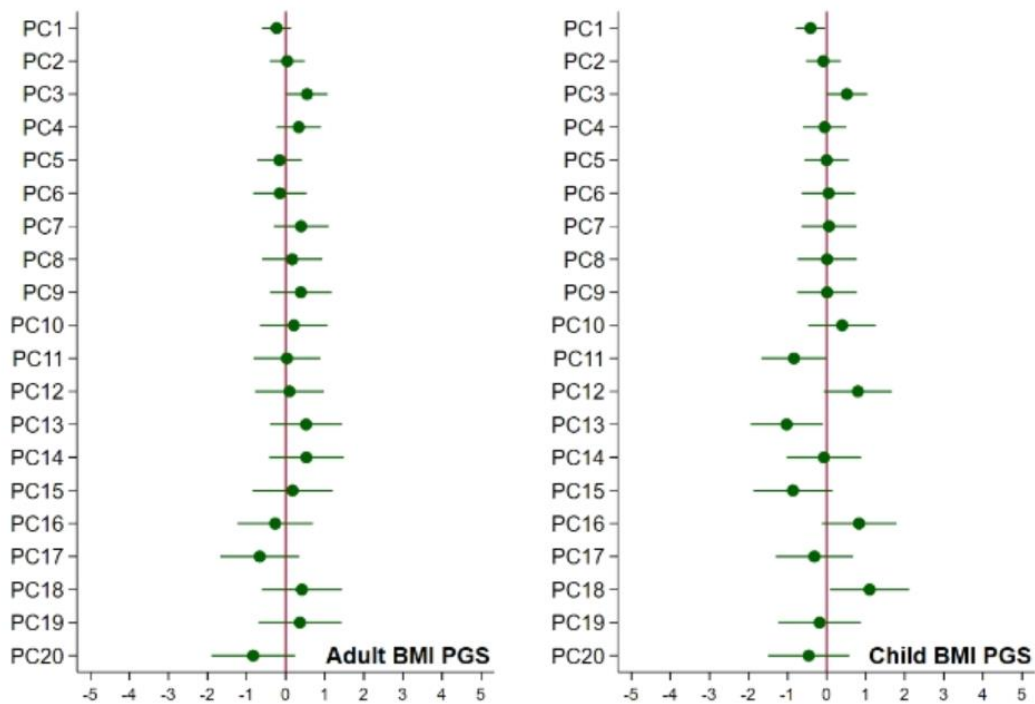


Appendix 1 - Figure 2: Associations of child's BMI polygenic scores with ancestry



Caption: associations of the child's polygenic scores for BMI and the child's principal components of ancestry, adjusted for the child's genotyping centre and chip.

Appendix 1 - Figure 3: Associations of child's BMI polygenic scores with ancestry, adjusted for parental polygenic scores.



Caption: associations of the child's polygenic scores for BMI and the child's principal components of ancestry, adjusted for the child's genotyping centre and chip and the parents' polygenic scores.

Appendix 1 - Table 1: Descriptive statistics of full MoBa sample (N=113,691)^a

Continuous variables	mean	SD	N obs
Maternal age at birth	30.1	4.6	113,691
Paternal age at birth	32.7	5.5	113,172
Maternal depressive/anxiety symptoms, based on 5 items from the Hopkins Symptoms Checklist-25 (SCL-25) ^b	1.3	2.0	100,570
Paternal depressive/anxiety symptoms, based on 8 items from the Hopkins Symptoms Checklist-25 (SCL-25) ^c	1.2	2.1	77,018
Maternal ADHD symptoms: adult ADHD self-report scale ^d	6.6	3.5	56,255
Paternal ADHD symptoms: adult ADHD self-report scale ^e	8.2	3.2	34,425
Maternal pre-pregnancy BMI (kg/m ²)	24.0	4.1	100,060
Paternal BMI (kg/m ²)	25.9	3.3	79,536
Child's BMI at age 8 (kg/m ²)	16.2	2.0	36,894
Child depressive symptoms age 8: Short Mood and Feelings Questionnaire (SMFQ) ^f	1.9	2.4	43,065
Child anxiety symptoms age 8: Screen for Child Anxiety Related Disorders (SCARED) ^g	1.0	1.2	43,298
Child ADHD symptoms age 8: Parent/Teacher Rating Scale for Disruptive Behaviour Disorders (RS-DBD) ^h	8.5	7.2	43,238
Child ADHD symptoms (inattention) age 8: Parent/Teacher Rating Scale for Disruptive Behaviour Disorders (RS-DBD) ⁱ	5.0	4.1	43,194
Child ADHD symptoms (hyperactivity) age 8: Parent/Teacher Rating Scale for Disruptive Behaviour Disorders (RS-DBD) ^j	3.6	3.9	43,177
Categorical variables	Category	%	N obs
Child's sex	male	51.3	113,477
	female	48.7	
maternal educational qualifications	9-year elementary education	2.8	101,020
	Up to 2 years further education	5.2	
	Further education: vocational	12.8	
	Further education: general studies, sixth form	15.7	
	Higher education: college/university, up to 4 years	40.9	
	Higher education: college/university, over 4 years	22.6	
paternal educational qualifications	9-year elementary education	4.8	100,891
	Up to 2 years further education	6.6	
	Further education: vocational	26.2	
	Further education: general studies, sixth form	13.2	
	Higher education: college/university, up to 4 years	26.5	
	Higher education: college/university, over 4 years	22.7	
maternal parity at child's birth	0	44.0	113,691
	1	35.9	
	2	15.6	
	3	3.4	
	4+	1.1	

Mother's marital status at birth	Married/registered partner	95.5	113,691
	single	4.5	
Mother's smoked during pregnancy	never	49.9	101,373
	Stopped before week 17	41.7	
	Currently, sometimes	2.8	
	Currently, daily	5.6	

^aAll participants in the birth registry file who had not withdrawn consent. ^bPossible range: 0-15. ^cPossible range: 0-24. ^dPossible range: 0-24. ^ePossible range: 0-24. ^fPossible range: 0-10. ^gPossible range: 0-54. ^hPossible range: 0-27. ⁱPossible range: 0-27.

Appendix 1 - Table 2: Descriptive statistics of analytic sample (N=40,949)^a, unimputed data

Continuous variables	mean	SD	N obs
Maternal age at birth	30.2	4.4	40,949
Paternal age at birth	32.6	5.1	40,945
Maternal depressive/anxiety symptoms, based on 5 items from the Hopkins Symptoms Checklist-25 (SCL-25) ^b	1.2	1.9	39,647
Paternal depressive/anxiety symptoms, based on 8 items from the Hopkins Symptoms Checklist-25 (SCL-25) ^c	1.1	2.1	38,050
Maternal ADHD symptoms: adult ADHD self-report scale ^d	6.5	3.4	24,192
Paternal ADHD symptoms: adult ADHD self-report scale ^e	8.2	3.1	16,348
Maternal pre-pregnancy BMI (kg/m ²)	24.0	4.1	39,323
Paternal BMI (kg/m ²)	25.9	3.2	39,405
Child's BMI at age 8 (kg/m ²)	16.2	2.0	16,144
Child depressive symptoms age 8: Short Mood and Feelings Questionnaire (SMFQ) ^f	1.8	2.4	18,747
Child anxiety symptoms age 8: Screen for Child Anxiety Related Disorders (SCARED) ^g	1.0	1.2	18,834
Child ADHD symptoms age 8: Parent/Teacher Rating Scale for Disruptive Behaviour Disorders (RS-DBD) ^h	8.4	7.1	18,813
Child ADHD symptoms (inattention) age 8: Parent/Teacher Rating Scale for Disruptive Behaviour Disorders (RS-DBD) ⁱ	4.9	4.0	18,794
Child ADHD symptoms (hyperactivity) age 8: Parent/Teacher Rating Scale for Disruptive Behaviour Disorders (RS-DBD) ^j	3.5	3.8	18,787
Categorical variables	Category	%	N obs
Child's sex	male	51.0	40,949
	female	48.9	
maternal educational qualifications	9-year elementary education	2.0	39,569
	Up to 2 years further education	4.1	
	Further education: vocational	12.1	
	Further education: general studies, sixth form	14.9	
	Higher education: college/university, up to 4 years	42.8	
	Higher education: college/university, over 4 years	24.8	
paternal educational qualifications	9-year elementary education	3.4	40,062
	Up to 2 years further education	5.6	
	Further education: vocational	25.1	
	Further education: general studies, sixth form	12.9	
	Higher education: college/university, up to 4 years	28.5	
	Higher education: college/university, over 4 years	24.4	
maternal parity at child's birth	0	46.8	40,949
	1	35.7	
	2	14.0	
	3	2.7	
	4+	0.7	

Mother's marital status at birth	Married/registered partner	97.4	40,949
	single	2.6	
Mother's smoked during pregnancy	never	51.1	40,118
	Stopped before week 17	42.0	
	Currently, sometimes	2.4	
	Currently, daily	4.5	

^aThe reasons for exclusions and numbers in each case are shown in Appendix 1 - Figure 1. ^bPossible range: 0-15. ^cPossible range: 0-24. ^dPossible range: 0-24. ^ePossible range: 0-24. ^fPossible range: 0-10. ^gPossible range: 0-54. ^hPossible range: 0-27. ⁱPossible range: 0-27.

Appendix 1 - Table 3: BMI and symptoms of depression, anxiety, and ADHD at age 8 in MoBa, adult BMI PGS (N=40,949)^a

Outcome		Non-genetic estimate ^b			MR estimate ^c			Within-families MR estimate ^c		
		Beta (per 5kg/m ²)	CI	p	Beta (per 5kg/m ²)	CI	p	Beta (per 5kg/m ²)	CI	p
Depressive symptoms: standardized SMFQ ^d score	Child BMI ^a	0.05	0.01,0.09	0.02	0.45	0.26,0.64	<0.001	0.26	-0.01,0.52	0.06
	Mother's BMI	0.05	0.03,0.07	<0.001				0.11	0.02,0.19	0.01
	Father's BMI	0.01	-0.02,0.03	0.67				0.02	-0.09,0.13	0.71
Anxiety symptoms: standardized SCARED ^e score	Child BMI	-0.07	-0.11,-0.03	0.001	-0.06	-0.25,0.12	0.51	0.01	-0.25,0.26	0.96
	Mother's BMI	0.01	-0.01,0.03	0.47				-0.03	-0.11,0.05	0.49
	Father's BMI	-0.00	-0.02,0.02	0.89				-0.02	-0.13,0.09	0.72
ADHD symptoms: standardized RS-DBD ^f score, ADHD items	Child BMI	-0.07	-0.11,-0.03	0.001	0.35	0.17,0.53	<0.001	0.36	0.09,0.63	0.009
	Mother's BMI	0.04	0.02,0.06	<0.001				0.00	-0.08,0.09	0.97
	Father's BMI	0.02	-0.00,0.04	0.10				-0.01	-0.12,0.09	0.80
ADHD-inattention symptoms: standardized RS-DBD ^f score, inattention items	Child BMI	-0.06	-0.10,-0.02	0.006	0.32	0.14,0.49	<0.001	0.38	0.12,0.65	0.005
	Mother's BMI	0.05	0.03,0.07	<0.001				0.01	-0.08,0.09	0.86
	Father's BMI	0.02	-0.00,0.05	0.06				-0.06	-0.17,0.04	0.24
ADHD-hyperactivity symptoms: standardized RS-DBD ^f score, hyperactivity items	Child BMI	-0.06	-0.10,-0.02	0.002	0.31	0.13,0.49	0.001	0.27	-0.00,0.54	0.05
	Mother's BMI	0.03	0.01,0.05	0.005				-0.00	-0.09,0.08	0.92
	Father's BMI	0.01	-0.01,0.04	0.32				0.04	-0.07,0.15	0.47

^aCoefficients represent S.D. change in symptoms per 5kg/m² increase in BMI. ^bPhenotypic models adjust for the child's sex and birth year, the mother's parity at the child's birth, and the mother's and father's: educational qualifications, depressive/anxiety and ADHD symptoms, and smoking status during pregnancy. They also adjust for the child's, mother's, and father's genotyping centre, genotyping chip, and first 20 principal components of ancestry. ^cGenetic models adjust for the child's sex and birth year and the child's, mother's, and father's genotyping centre, genotyping chip, and first 20 principal components of ancestry. ^dShort Mood and Feelings Questionnaire. ^eScreen for Child Anxiety Related Disorders. ^fParent/Teacher Rating Scale for Disruptive Behaviour Disorders

Appendix 1 - Table 4: BMI and symptoms of depression, anxiety, and ADHD at age 8 in MoBa, childhood body size PGS (N=40,949)^a

Outcome		Non-genetic estimate ^b			MR estimate ^c			Within-families MR estimate ^c		
		Beta (per 5kg/m ²)	CI	p	Beta (per 5kg/m ²)	CI	p	Beta (per 5kg/m ²)	CI	p
Depressive symptoms: standardized SMFQ ^d score	Child BMI ^a	0.05	0.01,0.09	0.02	0.08	-0.07,0.22	0.29	0.02	-0.20,0.23	0.88
	Mother's BMI	0.05	0.03,0.07	<0.001				0.02	-0.09,0.14	0.67
	Father's BMI	0.01	-0.02,0.03	0.67				0.05	-0.10,0.19	0.51
Anxiety symptoms: standardized SCARED ^e score	Child BMI	-0.07	-0.11,-0.03	0.001	-0.04	-0.18,0.11	0.62	0.02	-0.18,0.23	0.83
	Mother's BMI	0.01	-0.01,0.03	0.47				-0.02	-0.12,0.09	0.78
	Father's BMI	-0.00	-0.02,0.02	0.89				-0.06	-0.19,0.08	0.42
ADHD symptoms: standardized RS-DBD ^f score, ADHD items	Child BMI	-0.07	-0.11,-0.03	0.001	-0.07	-0.21,0.07	0.35	-0.03	-0.22,0.17	0.80
	Mother's BMI	0.04	0.02,0.06	<0.001				-0.03	-0.12,0.07	0.62
	Father's BMI	0.02	-0.00,0.04	0.10				-0.02	-0.15,0.11	0.77
ADHD-inattention symptoms: standardized RS-DBD ^f score, inattention items	Child BMI	-0.06	-0.10,-0.02	0.006	-0.04	-0.18,0.11	0.63	-0.05	-0.25,0.14	0.59
	Mother's BMI	0.05	0.03,0.07	<0.001				0.03	-0.07,0.13	0.61
	Father's BMI	0.02	-0.00,0.05	0.06				-0.01	-0.14,0.12	0.86
ADHD-hyperactivity symptoms: standardized RS-DBD ^f score, hyperactivity items	Child BMI	-0.06	-0.10,-0.02	0.002	-0.08	-0.22,0.05	0.24	0.01	-0.20,0.22	0.95
	Mother's BMI	0.03	0.01,0.05	0.005				-0.07	-0.18,0.03	0.18
	Father's BMI	0.01	-0.01,0.04	0.32				-0.02	-0.16,0.11	0.74

^aCoefficients represent S.D. change in symptoms per 5kg/m² increase in BMI. ^bPhenotypic models adjust for the child's sex and birth year, the mother's parity at the child's birth, and the mother's and father's: educational qualifications, depressive/anxiety and ADHD symptoms, and smoking status during pregnancy. They also adjust for the child's, mother's, and father's genotyping centre, genotyping chip, and first 20 principal components of ancestry. ^cGenetic models adjust for the child's sex and birth year and the child's, mother's, and father's genotyping centre, genotyping chip, and first 20 principal components of ancestry. ^dShort Mood and Feelings Questionnaire. ^eScreen for Child Anxiety Related Disorders. ^fParent/Teacher Rating Scale for Disruptive Behaviour Disorders

Appendix 1 - Table 5: Associations of phenotypes and polygenic scores within parental pairs*.				
<i>Phenotypes: regression of father's BMI, depressive symptoms, and ADHD symptoms on mother's phenotypes</i>				
	<i>Father's: BMI</i>	<i>Father's: Depressive symptoms</i>	<i>Father's: ADHD symptoms</i>	
	Beta (95%CI), p	Beta (95%CI), p	Beta (95%CI), p	
<i>Mother's: BMI</i>	0.23 (0.22,0.25) p<0.001	0.01 (-0.00,0.02) p=0.09	0.03 (0.02,0.05) p<0.001	
<i>Mother's: Depressive symptoms</i>	0.00 (-0.01,0.01), p=0.85	0.18 (0.16,0.20) p<0.001	0.10 (0.09,0.12), p<0.001	
<i>Mother's: ADHD symptoms</i>	0.01 (-0.02,0.01) p=0.32	0.05 (0.05,0.06) p<0.001	0.11 (0.09,0.13) p<0.001	
<i>Polygenic scores: regression of father's PGS for BMI, depression, and ADHD: regression of father's PGS on mother's PGS</i>				
	<i>Father's: Adult BMI PGS</i>	<i>Father's: Childhood body size PGS</i>	<i>Father's: Depression PGS</i>	<i>Father's: ADHD PGS</i>
	Beta (95%CI), p	Beta (95%CI), p	Beta (95%CI), p	Beta (95%CI)
<i>Mother's: Adult BMI PGS</i>	0.01 (0.00,0.02), p=0.02	0.01 (0.00,0.02), p=0.008	-0.00 (-0.01,0.01), p=0.62	-0.00 (-0.01,0.01), p=0.49
<i>Mother's: Childhood body size PGS</i>	0.01 (-0.00,0.02), p=0.10	0.01 (-0.00,0.02), p=0.15	0.00 (-0.00,0.01), p=0.33	0.01 (0.00,0.02), p=0.03
<i>Mother's: Depression PGS</i>	-0.01 (-0.02-0.00), p=0.11	-0.00 (-0.01,0.01), p=0.76	-0.00 (-0.01,0.01), p=0.44	-0.00 (-0.01,0.01), p=0.47
<i>Mother's: ADHD PGS</i>	-0.00 (-0.01,0.01), p=0.58	0.01 (-0.00,0.02), p=0.24	-0.00 (-0.01,0.01), p=0.42	-0.00 (-0.01,0.01), p=0.93
*all models adjusted for the first 20 principal components of ancestry, genotyping centre and genotyping chip of the mother and father.				

Appendix 1 - Table 6: BMI and symptoms of depression, anxiety, and ADHD at age 8 in MoBa, adult BMI PGS, log-transformed outcomes (N=40,949)^a

Outcome		Non-genetic estimate ^b			MR estimate ^c			Within-families MR estimate ^c		
		Beta (per 5kg/m ²)	CI	p	Beta (per 5kg/m ²)	CI	p	Beta (per 5kg/m ²)	CI	p
Depressive symptoms: log-transformed SMFQ ^d score	Child BMI ^a	0.03	0.01,0.06	0.02	0.31	0.18,0.45	<0.001	0.16	-0.04,0.35	0.12
	Mother's BMI	0.04	0.03,0.05	<0.001				0.08	0.02,0.14	0.01
	Father's BMI	0.01	-0.01,0.02	0.56				0.03	-0.05,0.10	0.52
Anxiety symptoms: log-transformed SCARED ^e score	Child BMI	-0.03	-0.05,-0.01	0.001	-0.04	-0.14,0.05	0.38	-0.00	-0.14,0.13	0.97
	Mother's BMI	0.00	-0.01,0.01	0.60				-0.02	-0.06,0.02	0.35
	Father's BMI	-0.00	-0.01,0.01	1.00				-0.01	-0.06,0.05	0.79
ADHD symptoms: log-transformed RS-DBD ^f score	Child BMI	-0.05	-0.08,-0.02	0.002	0.27	0.13,0.40	<0.001	0.28	0.08,0.49	0.006
	Mother's BMI	0.03	0.02,0.05	<0.001				0.00	-0.06,0.07	0.90
	Father's BMI	0.02	-0.00,0.03	0.07				-0.02	-0.10,0.06	0.66
ADHD-inattention symptoms: log-transformed RS-DBD ^f score, inattention items	Child BMI	-0.04	-0.07,-0.01	0.007	0.22	0.09,0.34	0.001	0.29	0.10,0.47	0.003
	Mother's BMI	0.03	0.02,0.05	<0.001				0.00	-0.06,0.07	0.92
	Father's BMI	0.02	0.00,0.03	0.05				-0.06	-0.14,0.02	0.13
ADHD-hyperactivity symptoms: log-transformed RS-DBD ^f score, hyperactivity items	Child BMI	-0.05	-0.08,-0.01	0.004	0.24	0.10,0.39	0.001	0.18	-0.04,0.40	0.10
	Mother's BMI	0.02	0.00,0.04	0.01				0.00	-0.07,0.07	1.00
	Father's BMI	0.01	-0.01,0.03	0.25				0.05	-0.04,0.14	0.29

^aCoefficients represent change in symptoms, log-transformed after adding 1, per 5kg/m² increase in BMI. ^bPhenotypic models adjust for the child's sex and birth year, the mother's parity at the child's birth, and the mother's and father's: educational qualifications, depressive/anxiety and ADHD symptoms, and smoking status during pregnancy. They also adjust for the child's, mother's, and father's genotyping centre, genotyping chip, and first 20 principal components of ancestry. ^cGenetic models adjust for the child's sex and birth year and the child's, mother's, and father's genotyping centre, genotyping chip, and first 20 principal components of ancestry. ^dShort Mood and Feelings Questionnaire. ^eScreen for Child Anxiety Related Disorders. ^fParent/Teacher Rating Scale for Disruptive Behaviour Disorders.

Appendix 1 - Table 7: BMI and symptoms of depression, anxiety, and ADHD at age 8 in MoBa, childhood body size PGS, log-transformed outcomes (N=40,949)^a

Outcome		Non-genetic estimate ^b			MR estimate ^c			Within-families MR estimate ^c		
		Beta (per 5kg/m ²)	CI	p	Beta (per 5kg/m ²)	CI	p	Beta (per 5kg/m ²)	CI	p
Depressive symptoms: log-transformed SMFQ ^d score	Child BMI ^a	0.03	0.01,0.06	0.02	0.07	-0.04,0.17	0.20	0.02	-0.14,0.17	0.84
	Mother's BMI	0.04	0.03,0.05	<0.001				0.02	-0.06,0.10	0.67
	Father's BMI	0.01	-0.01,0.02	0.56				0.05	-0.06,0.15	0.39
Anxiety symptoms: log-transformed SCARED ^e score	Child BMI	-0.03	-0.05,-0.01	0.001	-0.03	-0.10,0.05	0.49	0.01	-0.10,0.12	0.89
	Mother's BMI	0.00	-0.01,0.01	0.60				-0.01	-0.07,0.04	0.69
	Father's BMI	-0.00	-0.01,0.01	1.00				-0.03	-0.10,0.04	0.43
ADHD symptoms: log-transformed RS-DBD ^f score	Child BMI	-0.05	-0.08,-0.02	0.002	-0.06	-0.17,0.05	0.30	-0.03	-0.19,0.13	0.70
	Mother's BMI	0.03	0.02,0.05	<0.001				-0.02	-0.10,0.06	0.68
	Father's BMI	0.02	-0.00,0.03	0.07				-0.01	-0.11,0.09	0.79
ADHD-inattention symptoms: log-transformed RS-DBD ^f score, inattention items	Child BMI	-0.04	-0.07,-0.01	0.007	-0.03	-0.14,0.07	0.52	-0.05	-0.19,0.10	0.52
	Mother's BMI	0.03	0.02,0.05	<0.001				0.02	-0.06,0.09	0.64
	Father's BMI	0.02	0.00,0.03	0.05				-0.01	-0.10,0.09	0.87
ADHD-hyperactivity symptoms: log-transformed RS-DBD ^f score, hyperactivity items	Child BMI	-0.05	-0.08,-0.01	0.004	-0.07	-0.19,0.04	0.21	-0.00	-0.18,0.17	0.98
	Mother's BMI	0.02	0.00,0.04	0.01				-0.06	-0.15,0.03	0.22
	Father's BMI	0.01	-0.01,0.03	0.25				-0.02	-0.13,0.09	0.73

^aCoefficients represent change in symptoms, log-transformed after adding 1, per 5kg/m² increase in BMI. ^bPhenotypic models adjust for the child's sex and birth year, the mother's parity at the child's birth, and the mother's and father's: educational qualifications, depressive/anxiety and ADHD symptoms, and smoking status during pregnancy. They also adjust for the child's, mother's, and father's genotyping centre, genotyping chip, and first 20 principal components of ancestry. ^cGenetic models adjust for the child's sex and birth year and the child's, mother's, and father's genotyping centre, genotyping chip, and first 20 principal components of ancestry. ^dShort Mood and Feelings Questionnaire. ^eScreen for Child Anxiety Related Disorders. ^fParent/Teacher Rating Scale for Disruptive Behaviour Disorders.

Appendix 1 - Table 8: Robustness checks based on SNP-specific associations with child's BMI^a and outcomes: SNPs in adult BMI polygenic score

	Inverse-variance weighted		MR-Egger: slope		MR-Egger: intercept		MR-Median		MR-Modal	
	Beta	p	Beta	p	Beta	p	Beta	p	Beta	p
<i>For classic MR models</i>										
Depressive symptoms: standardized SMFQ ^b score	0.12	<0.001	0.09	0.18	0.00	0.56	0.11	<0.001	0.07	0.42
Anxiety symptoms: standardized SCARED ^c score	-0.02	0.13	-0.05	0.45	0.00	0.61	-0.01	0.87	0.01	0.92
ADHD symptoms: standardized RS-DBD ^d score	0.10	<0.001	0.02	0.77	0.00	0.19	0.09	0.01	0.07	0.40
ADHD symptoms (inattention): standardized RS-DBD ^d score	0.09	<0.001	-0.02	0.73	0.00	0.07	0.09	0.01	-0.02	0.81
ADHD symptoms (hyperactivity): standardized RS-DBD ^d score	0.08	<0.001	0.05	0.40	0.00	0.61	0.08	0.02	0.05	0.55
	Inverse-variance weighted		MR-Egger: slope		MR-Egger: intercept		MR-Median		MR-Modal	
	Beta	p	Beta	p	Beta	p	Beta	p	Beta	p
<i>For within-families MR models</i>										
Depressive symptoms: standardized SMFQ ^b score	0.06	<0.001	0.04	0.67	0.00	0.77	0.07	0.16	0.02	0.83
Anxiety symptoms: standardized SCARED ^c score	0.00	1.00	0.05	0.58	0.00	0.57	0.03	0.57	0.03	0.76
ADHD symptoms: standardized RS-DBD ^d score	0.09	<0.001	0.07	0.41	0.00	0.80	0.09	0.07	0.13	0.24
ADHD symptoms (inattention): standardized RS-DBD ^d score	0.10	<0.001	0.00	0.97	0.00	0.21	0.10	0.03	0.05	0.63
ADHD symptoms (hyperactivity): standardized RS-DBD ^d score	0.07	<0.001	0.13	0.13	0.00	0.44	0.07	0.14	0.06	0.56

^aIn the main analyses, all coefficients are expressed in terms of S.D. change in symptoms per 5kg/m² increase in BMI. In robustness checks, SNP-exposure associations were taken directly from the relevant GWAS. Coefficients above for BMI-outcome associations are therefore on the scale of kg/m². ^bShort Mood and Feelings Questionnaire. ^cScreen for Child Anxiety Related Disorders. ^dParent/Teacher Rating Scale for Disruptive Behaviour Disorders.

Appendix 1 - Table 9: Robustness checks based on SNP-specific associations with child's BMI^a and outcomes: SNPs in childhood body size polygenic score

	Inverse-variance weighted		MR-Egger: slope		MR-Egger: intercept		MR-Median		MR-Modal	
	Beta	p	Beta	p	Beta	p	Beta	p	Beta	p
<i>For classic MR models</i>										
Depressive symptoms: standardized SMFQ ^b score	0.06	0.03	0.10	0.30	0.00	0.57	0.05	0.52	0.04	0.67
Anxiety symptoms: standardized SCARED ^c score										
ADHD symptoms: standardized RS-DBD ^d score	-0.02	0.40	0.01	0.90	0.00	0.66	-0.02	0.74	-0.01	0.95
ADHD symptoms (inattention): standardized RS-DBD ^d score	-0.04	0.14	-0.02	0.85	0.00	0.75	-0.06	0.36	-0.05	0.65
ADHD symptoms (hyperactivity): standardized RS-DBD ^d score	-0.02	0.47	-0.04	0.64	0.00	0.81	-0.08	0.28	-0.08	0.42
ADHD symptoms (hyperactivity): standardized RS-DBD ^d score	-0.05	0.05	0.01	0.90	0.00	0.42	-0.05	0.48	-0.04	0.68
	Inverse-variance weighted		MR-Egger: slope		MR-Egger: intercept		MR-Median		MR-Modal	
<i>For within-families MR models</i>										
Depressive symptoms: standardized SMFQ ^b score	0.02	0.59	0.05	0.70	0.00	0.75	0.03	0.76	0.04	0.79
Anxiety symptoms: standardized SCARED ^c score	0.02	0.60	0.07	0.64	0.00	0.69	0.04	0.66	0.05	0.74
ADHD symptoms: standardized RS-DBD ^d score	-0.02	0.53	0.09	0.49	0.00	0.35	-0.01	0.94	0.03	0.85
ADHD symptoms (inattention): standardized RS-DBD ^d score	-0.04	0.28	0.06	0.65	0.00	0.41	-0.04	0.68	0.01	0.95
ADHD symptoms (hyperactivity): standardized RS-DBD ^d score	0.00	0.98	0.11	0.43	0.00	0.39	0.02	0.80	0.06	0.67

^aIn the main analyses, all coefficients are expressed in terms of S.D. change in symptoms per 5kg/m² increase in BMI. In robustness checks, SNP-exposure associations were taken directly from the relevant GWAS. Coefficients above for BMI-outcome associations are therefore on the scale of kg/m². ^bShort Mood and Feelings Questionnaire. ^cScreen for Child Anxiety Related Disorders. ^dParent/Teacher Rating Scale for Disruptive Behaviour Disorders.

Appendix 1 - Table 10: BMI and symptoms of depression, anxiety, and ADHD at age 8 in MoBa, adult BMI PGS, complete-case analysis^a

Outcome		Non-genetic estimate ^b			MR estimate ^c			Within-families MR estimate ^c		
		Beta (per 5kg/m ²)	CI	p	Beta (per 5kg/m ²)	CI	p	Beta (per 5kg/m ²)	CI	p
Depressive symptoms: standardized SMFQ ^d score. N=5158	Child BMI ^a	0.08	0.00,0.15	0.05	0.38	0.00,0.77	0.05	0.16	-0.35,0.66	0.55
	Mother's BMI	0.07	0.03,0.11	<0.001				0.10	-0.06,0.26	0.21
	Father's BMI	0.01	-0.04,0.05	0.79				0.04	-0.15,0.23	0.66
Anxiety symptoms: standardized SCARED ^e score. N=5177	Child BMI	-0.04	-0.12,0.03	0.26	-0.15	-0.54,0.24	0.45	-0.07	-0.62,0.48	0.80
	Mother's BMI	0.02	-0.02,0.06	0.26				0.06	-0.11,0.22	0.48
	Father's BMI	0.01	-0.04,0.05	0.69				-0.13	-0.34,0.08	0.24
ADHD symptoms: standardized RS-DBD ^f score, ADHD items. N=5174	Child BMI	-0.03	-0.11,0.04	0.38	0.41	-0.00,0.83	0.05	0.54	0.01,1.08	0.04
	Mother's BMI	0.09	0.05,0.12	<0.001				-0.01	-0.16,0.15	0.93
	Father's BMI	-0.01	-0.05,0.03	0.60				-0.09	-0.29,0.12	0.41
ADHD-inattention symptoms: standardized RS-DBD ^f score, inattention items. N=5171	Child BMI	-0.02	-0.10,0.05	0.55	0.44	0.04,0.85	0.03	0.73	0.20,1.25	0.01
	Mother's BMI	0.09	0.05,0.12	<0.001				-0.02	-0.18,0.14	0.84
	Father's BMI	-0.00	-0.05,0.04	0.83				-0.18	-0.39,0.03	0.09
ADHD-hyperactivity symptoms: standardized RS-DBD ^f score, hyperactivity items. N=5167	Child BMI	-0.04	-0.11,0.03	0.29	0.28	-0.13,0.70	0.18	0.21	-0.32,0.75	0.43
	Mother's BMI	0.07	0.03,0.11	0.001				0.01	-0.15,0.17	0.87
	Father's BMI	-0.01	-0.06,0.03	0.51				0.03	-0.17,0.24	0.75

^aCoefficients represent S.D. change in symptoms per 5kg/m² increase in BMI. ^bPhenotypic models adjust for the child's sex and birth year, the mother's parity at the child's birth, and the mother's and father's: educational qualifications, depressive/anxiety and ADHD symptoms, and smoking status during pregnancy. They also adjust for the child's, mother's, and father's genotyping centre, genotyping chip, and first 20 principal components of ancestry. ^cGenetic models adjust for the child's sex and birth year and the child's, mother's, and father's genotyping centre, genotyping chip, and first 20 principal components of ancestry. ^dScreen for Child Anxiety Related Disorders. ^fParent/Teacher Rating Scale for Disruptive Behaviour Disorders.

Appendix 1 - Table 11: BMI and symptoms of depression, anxiety, and ADHD at age 8 in MoBa, childhood body size PGS, complete-case analysis^a

Outcome		Non-genetic estimate ^b			MR estimate ^c			Within-families MR estimate ^c		
		Beta (per 5kg/m ²)	CI	p	Beta (per 5kg/m ²)	CI	p	Beta (per 5kg/m ²)	CI	p
Depressive symptoms: standardized SMFQ ^d score N=5158	Child BMI ^a	0.08	0.00,0.15	0.05	0.13	-0.15,0.42	0.37	0.10	-0.34,0.54	0.65
	Mother's BMI	0.07	0.03,0.11	<0.001				-0.06	-0.26,0.14	0.57
	Father's BMI	0.01	-0.04,0.05	0.79				0.10	-0.20,0.40	0.52
Anxiety symptoms: standardized SCARED ^e score N=5177	Child BMI	-0.04	-0.12,0.03	0.26	-0.03	-0.32,0.27	0.85	0.06	-0.37,0.48	0.79
	Mother's BMI	0.02	-0.02,0.06	0.26				0.02	-0.19,0.24	0.85
	Father's BMI	0.01	-0.04,0.05	0.69				-0.13	-0.43,0.18	0.42
ADHD symptoms: standardized RS-DBD ^f score, ADHD items N=5174	Child BMI	-0.03	-0.11,0.04	0.38	0.00	-0.29,0.30	0.98	0.13	-0.31,0.56	0.57
	Mother's BMI	0.09	0.05,0.12	<0.001				-0.05	-0.25,0.15	0.61
	Father's BMI	-0.01	-0.05,0.03	0.60				-0.09	-0.40,0.22	0.56
ADHD-inattention symptoms: standardized RS-DBD ^f score, inattention items N=5171	Child BMI	-0.02	-0.10,0.05	0.55	-0.00	-0.29,0.29	0.99	0.13	-0.29,0.55	0.55
	Mother's BMI	0.09	0.05,0.12	<0.001				0.04	-0.17,0.24	0.72
	Father's BMI	-0.00	-0.05,0.04	0.83				-0.20	-0.51,0.11	0.20
ADHD-hyperactivity symptoms: standardized RS-DBD ^f score, hyperactivity items N=5167	Child BMI	-0.04	-0.11,0.03	0.29	0.00	-0.30,0.30	0.99	0.10	-0.35,0.55	0.67
	Mother's BMI	0.07	0.03,0.11	0.001				-0.14	-0.34,0.06	0.18
	Father's BMI	-0.01	-0.06,0.03	0.51				0.03	-0.28,0.34	0.84

^aCoefficients represent S.D. change in symptoms per 5kg/m² increase in BMI. ^bPhenotypic models adjust for the child's sex and birth year, the mother's parity at the child's birth, and the mother's and father's: educational qualifications, depressive/anxiety and ADHD symptoms, and smoking status during pregnancy. They also adjust for the child's, mother's, and father's genotyping centre, genotyping chip, and first 20 principal components of ancestry. ^cGenetic models adjust for the child's sex and birth year and the child's, mother's, and father's genotyping centre, genotyping chip, and first 20 principal components of ancestry. ^dShort Mood and Feelings Questionnaire. ^eScreen for Child Anxiety Related Disorders. ^fParent/Teacher Rating Scale for Disruptive Behaviour Disorders.

Appendix 1 - Table 12: Multivariable-adjusted associations^a of BMI quintiles with symptoms of depression, anxiety, and ADHD at age 8 in MoBa

BMI quintile	Depressive symptoms: standardized SMFQ ^b score		Anxiety symptoms: standardized SCARED ^c score		ADHD symptoms: standardized RS-DBD ^d score, ADHD items		ADHD-inattention symptoms: standardized RS-DBD ^d score, inattention items		ADHD-hyperactivity symptoms: standardized RS-DBD ^d score, hyperactivity items	
	Beta ^e (95%CI)	p	Beta ^e (95%CI)	p	Beta ^e (95%CI)	p	Beta ^e (95%CI)	p	Beta ^e (95%CI)	p
1	0.00 (-0.04,0.04)	0.99	0.04 (0.00,0.09)	0.04	0.05 (0.01,0.09)	0.01	0.05 (0.01,0.09)	0.02	0.04 (-0.00,0.08)	0.05
2	-0.01 (-0.05,0.03)	0.70	0.02 (-0.03,0.06)	0.47	0.02 (-0.02,0.06)	0.29	0.02 (-0.02,0.06)	0.38	0.02 (-0.02,0.06)	0.30
3 (ref)	1		1		1		1		1	
4	0.01 (-0.03,0.05)	0.62	-0.03 (-0.07,0.01)	0.16	-0.01 (-0.04,0.03)	0.66	-0.01 (-0.05,0.02)	0.54	-0.00 (-0.04,0.03)	0.87
5	0.04 (0.00,0.08)	0.03	-0.03 (-0.07,0.01)	0.09	-0.02 (-0.06,0.02)	0.27	-0.01 (-0.05,0.03)	0.51	-0.03 (-0.06,0.01)	0.20

^aModels adjust for the child's sex and birth year, the mother's parity at the child's birth, and the mother's and father's: educational qualifications, depressive/anxiety and ADHD symptoms, and smoking status during pregnancy. They also adjust for the child's, mother's, and father's genotyping centre, genotyping chip, and first 20 principal components of ancestry. ^bShort Mood and Feelings Questionnaire. ^cScreen for Child Anxiety Related Disorders. ^dParent/Teacher Rating Scale for Disruptive Behaviour Disorders. ^eCoefficients represent S.D. difference in symptoms between quintiles of child's BMI.

Appendix 1 - Table 13: BMI and symptoms of depression, anxiety, and ADHD at age 8 in MoBa, adult BMI PGS, genetic models adjusted for parental education (N=40,949)^a

Outcome		MR estimate ^b			Within-families MR estimate ^b		
		Beta (per 5kg/m ²)	CI	p	Beta (per 5kg/m ²)	CI	p
Depressive symptoms: standardized SMFQ ^c score	Child BMI ^a	0.38	0.19,0.58	<0.001	0.26	-0.01,0.53	0.06
	Mother's BMI				0.09	-0.00,0.17	0.05
	Father's BMI				-0.00	-0.11,0.11	0.97
Anxiety symptoms: standardized SCARED ^d score	Child BMI	-0.08	-0.26,0.11	0.43	0.01	-0.25,0.27	0.95
	Mother's BMI				-0.04	-0.12,0.05	0.40
	Father's BMI				-0.03	-0.14,0.08	0.64
ADHD symptoms: standardized RS-DBD ^e score, ADHD items	Child BMI	0.27	0.09,0.45	0.003	0.37	0.10,0.64	0.007
	Mother's BMI				-0.03	-0.12,0.06	0.52
	Father's BMI				-0.05	-0.16,0.06	0.37
ADHD-inattention symptoms: standardized RS-DBD ^e score, inattention items	Child BMI	0.25	0.07,0.42	0.007	0.39	0.13,0.66	0.004
	Mother's BMI				-0.02	-0.11,0.07	0.64
	Father's BMI				-0.10	-0.21,0.01	0.08
ADHD-hyperactivity symptoms: standardized RS-DBD ^e score, hyperactivity items	Child BMI	0.24	0.06,0.42	0.009	0.27	0.00,0.55	0.05
	Mother's BMI				-0.03	-0.12,0.06	0.49
	Father's BMI				0.01	-0.10,0.12	0.85

^aCoefficients represent S.D. change in symptoms per 5kg/m² increase in BMI. ^bModels adjust for the child's sex and birth year and the child's, mother's, and father's genotyping centre, genotyping chip, and first 20 principal components of ancestry. ^cShort Mood and Feelings Questionnaire. ^dScreen for Child Anxiety Related Disorders. ^eParent/Teacher Rating Scale for Disruptive Behaviour Disorders.

Appendix 1 - Table 14: BMI and symptoms of depression, anxiety, and ADHD at age 8 in MoBa, childhood body size PGS, genetic models adjusted for parental education (N=40,949)^a

Outcome		MR estimate ^b			Within-families MR estimate ^b		
		Beta (per 5kg/m ²)	CI	p	Beta (per 5kg/m ²)	CI	p
Depressive symptoms: standardized SMFQ ^c score	Child BMI ^a	0.07	-0.07,0.22	0.33	0.01	-0.20,0.23	0.90
	Mother's BMI				0.02	-0.10,0.13	0.76
	Father's BMI				0.05	-0.09,0.20	0.48
Anxiety symptoms: standardized SCARED ^d score	Child BMI	-0.03	-0.18,0.11	0.65	0.03	-0.18,0.23	0.81
	Mother's BMI				-0.02	-0.13,0.09	0.76
	Father's BMI				-0.06	-0.19,0.08	0.44
ADHD symptoms: standardized RS-DBD ^e score, ADHD items	Child BMI	-0.08	-0.22,0.06	0.27	-0.03	-0.23,0.16	0.75
	Mother's BMI				-0.03	-0.13,0.07	0.50
	Father's BMI				-0.02	-0.15,0.11	0.79
ADHD-inattention symptoms: standardized RS-DBD ^e score, inattention items	Child BMI	-0.05	-0.20,0.10	0.52	-0.06	-0.25,0.14	0.57
	Mother's BMI				0.02	-0.08,0.12	0.74
	Father's BMI				-0.01	-0.14,0.12	0.87
ADHD-hyperactivity symptoms: standardized RS-DBD ^e score, hyperactivity items	Child BMI	-0.10	-0.23,0.04	0.18	-0.00	-0.21,0.21	1.00
	Mother's BMI				-0.08	-0.19,0.03	0.15
	Father's BMI				-0.02	-0.15,0.12	0.77

^aCoefficients represent S.D. change in symptoms per 5kg/m² increase in BMI. ^bModels adjust for the child's sex and birth year and the child's, mother's, and father's genotyping centre, genotyping chip, and first 20 principal components of ancestry. ^cShort Mood and Feelings Questionnaire. ^dScreen for Child Anxiety Related Disorders. ^eParent/Teacher Rating Scale for Disruptive Behaviour Disorders.