

Supplementary Information

Scenario	Parameter	Initial value	Prior	Posterior estimate (95% CrI)
Baseline	Mutation rate (/site/generation), μ	0.00001	Exp(100000)	0.00002 (0.000001 - 0.0001)
	Proportion of cases sampled, π	0.7	Beta(5, 3)	0.66 (0.53 - 0.81)
	Proportion of contacts reported, ϵ	0.8	Beta(6, 1)	0.79 (0.59 - 0.97)
	Non-infectious contact probability, λ	0.0001	Beta(1, 20)	0.07 (0.05 - 0.10)
	Prob. of contact between transmission pairs, η	1	Fixed	-
	Prob. of falsely reporting a contact, ξ	0	Fixed	-
Sensitivity	Mutation rate (/site/generation), μ	0.00001	Exp(100000)	0.00002 (0.000001 - 0.0001)
	Proportion of cases sampled, π	0.7	Beta(1, 1)	0.69 (0.54 - 0.85)
	Proportion of contacts reported, ϵ	0.5	Beta(1, 1)	0.70 (0.48 - 0.92)
	Non-infectious contact probability, λ	0.1	Beta(1, 1)	0.08 (0.05 - 0.12)
	Prob. of contact between transmission pairs, η	1	Fixed	-
	Prob. of falsely reporting a contact, ξ	0	Fixed	-

Table S1: Initial values, prior distributions, and posterior estimates (95% credible interval (CrI)) for the parameters of the Outbreaker2 model under the baseline scenario and sensitivity analysis using uninformative priors for π , ϵ , and λ .

Parameter	Posterior estimate (median and 95% HPD)		
	October 2020	December 2020	March 2021
Mutation rate (/site/day), μ	1.4×10^{-6} (1.5×10^{-8} - 4.1×10^{-6})	5.0×10^{-7} (7.2×10^{-11} - 2.5×10^{-6})	2.5×10^{-6} (3.1×10^{-9} - 7.8×10^{-6})
Effective population size, N_e	1.47 (0.09 - 20.39)	0.01 (1.6×10^{-6} - 2.13)	0.87 (0.002 - 21.10)
Infection rate	0.005 (0.003 - 0.006)	0.02 (0.01 - 0.03)	0.01 (0.009 - 0.02)
Number of cases	141 (60 - 228)	13 (7 - 41)	18 (8 - 54)
tMRCA (dd/mm/yy)	17/9/19 (5/1/11 - 20/8/20)	11/12/20 (16/11/20 - 10/12/20)	15/2/21 (13/5/20 - 6/3/21)

Table S2: Posterior estimates (95% highest posterior density (HPD) interval) for the parameters of the SCOTTI model for each of the three periods. In October, three different pangolin lineages were sampled and their tMRCA is close to the wild type SARS-CoV-2 tMRCA, which is not expected to be accurately estimated.

Implementation date	Mitigation measure(s)
10 August 2020	Contact with positive case in the classroom considered low-risk If additional positive case(s) within 14 days, entire class quarantined + symptomatic testing
23 September 2020	7-14 days quarantine for children with positive household-contact
10 November 2020	Extracurricular activities suspended
12 January 2021	Positive household-contact = high-risk → 10-17 days quarantine In case of suspected positive household-contact, child should stay at home until result is known
26 January 2021	Child seated next to positive case = high-risk → testing and quarantine Class closure after 4 positive cases School closure when > 3 clusters (i.e. ≥ 2 cases in class) or 25% of classes has cluster
15 March 2021	One-day extracurricular activities allowed again
23 March 2021	Low-risk contacts tested on day 5 All children considered high-risk contact if no fixed places in classroom
1 October 2021	Symptomatic children isolated as soon as possible Positive household-contact = high-risk → quarantine Class closure after 2 positive cases Obligated mask wearing for teachers
31 October 2021	Extracurricular activities suspended Lunch inside classroom if no distance between classes is possible
26 November 2021	Class closure after 2 positive cases Obligated mask wearing for children and teachers Recommendation to perform regular antigen test
6 January 2022	Class closure after 4 positive cases One-day extracurricular activities allowed again
19 February 2022	No more mask wearing for children
7 March 2022	No more mask wearing for teachers

Table S3: Mitigation measures implemented in primary school, 2020 - 2022.

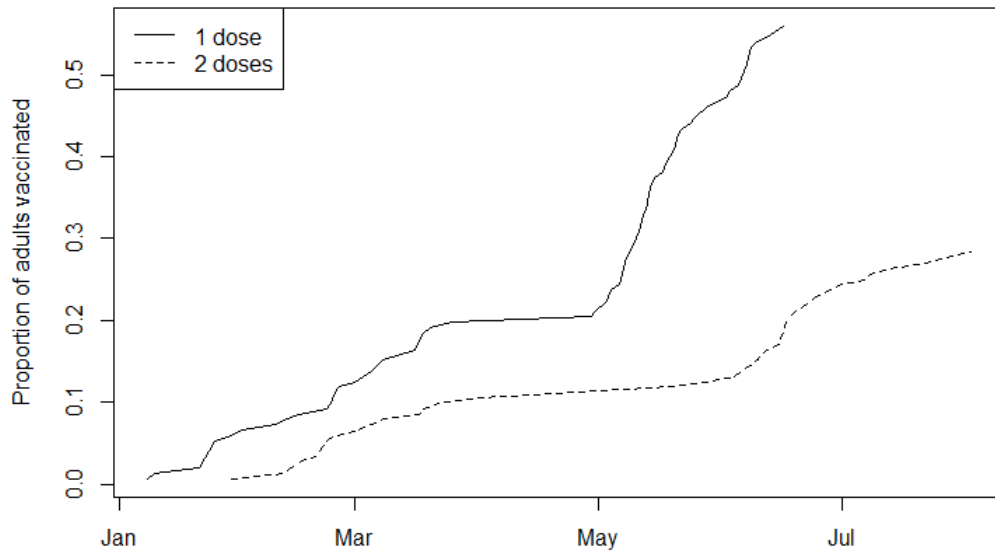


Figure S1: Vaccination coverage among adults in the study population.

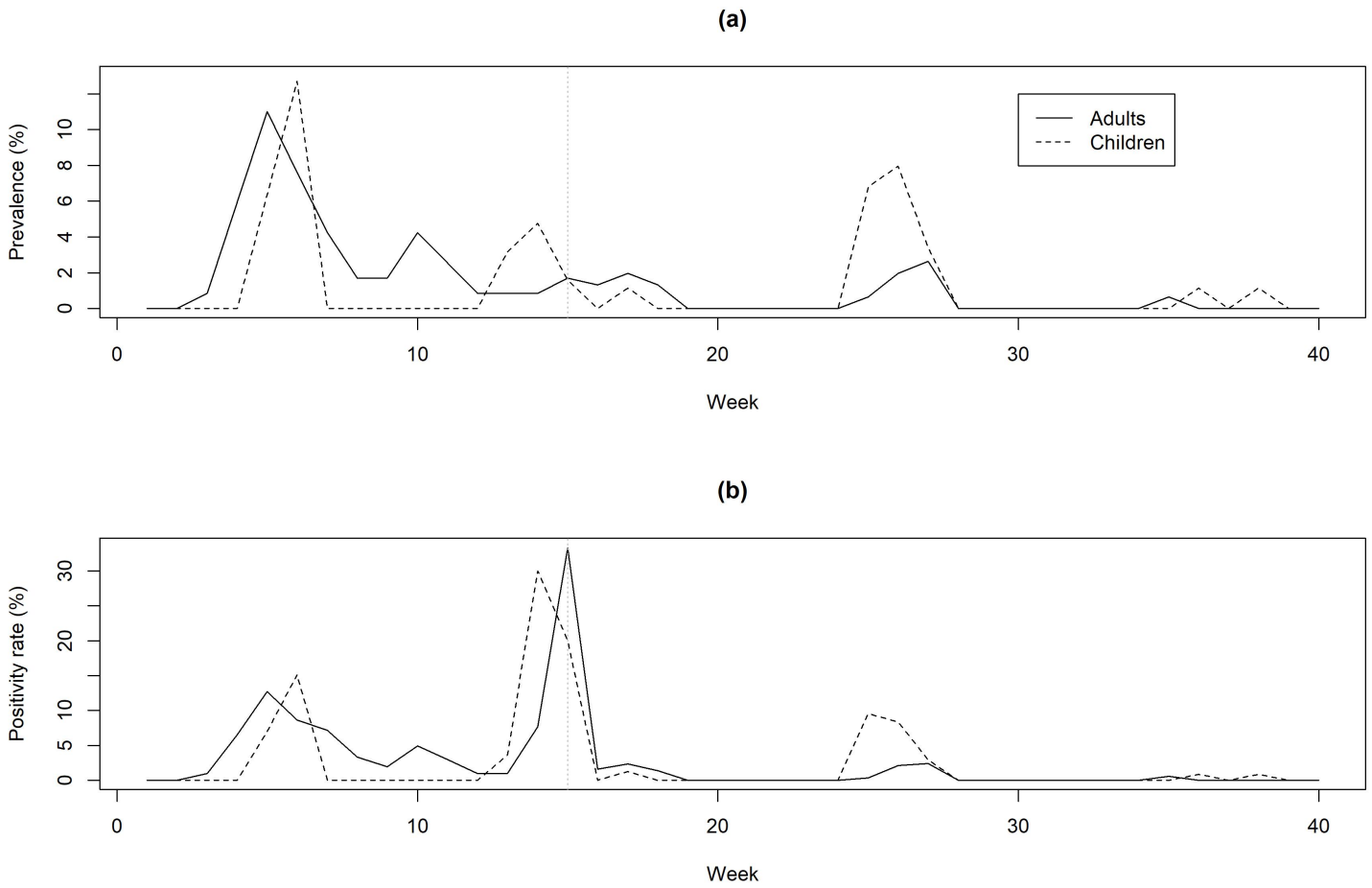


Figure S2: Prevalence (a) and positivity rate (b) over time ($N = 181$ from week 1 to week 15 (i.e., September to December 2020), $N = 240$ from week 16 to week 40 (i.e., January to June 2021)). Sampling was limited to one classroom in weeks 14 and 15. No samples were collected in weeks 22, 28, 29, and 30 due to school holidays.

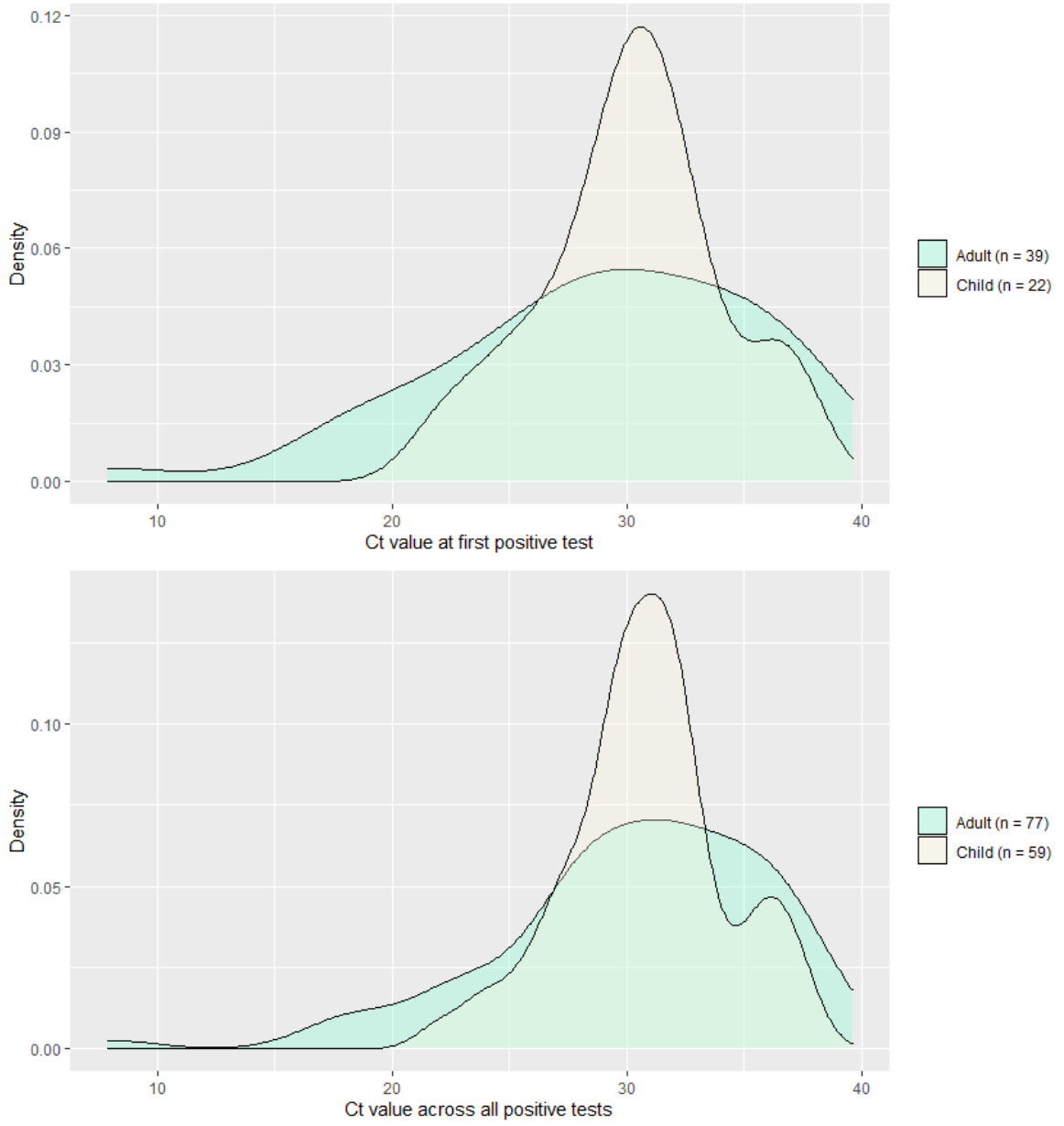


Figure S3: Ct values at first positive test (top) and overall (bottom) for children compared to adults.

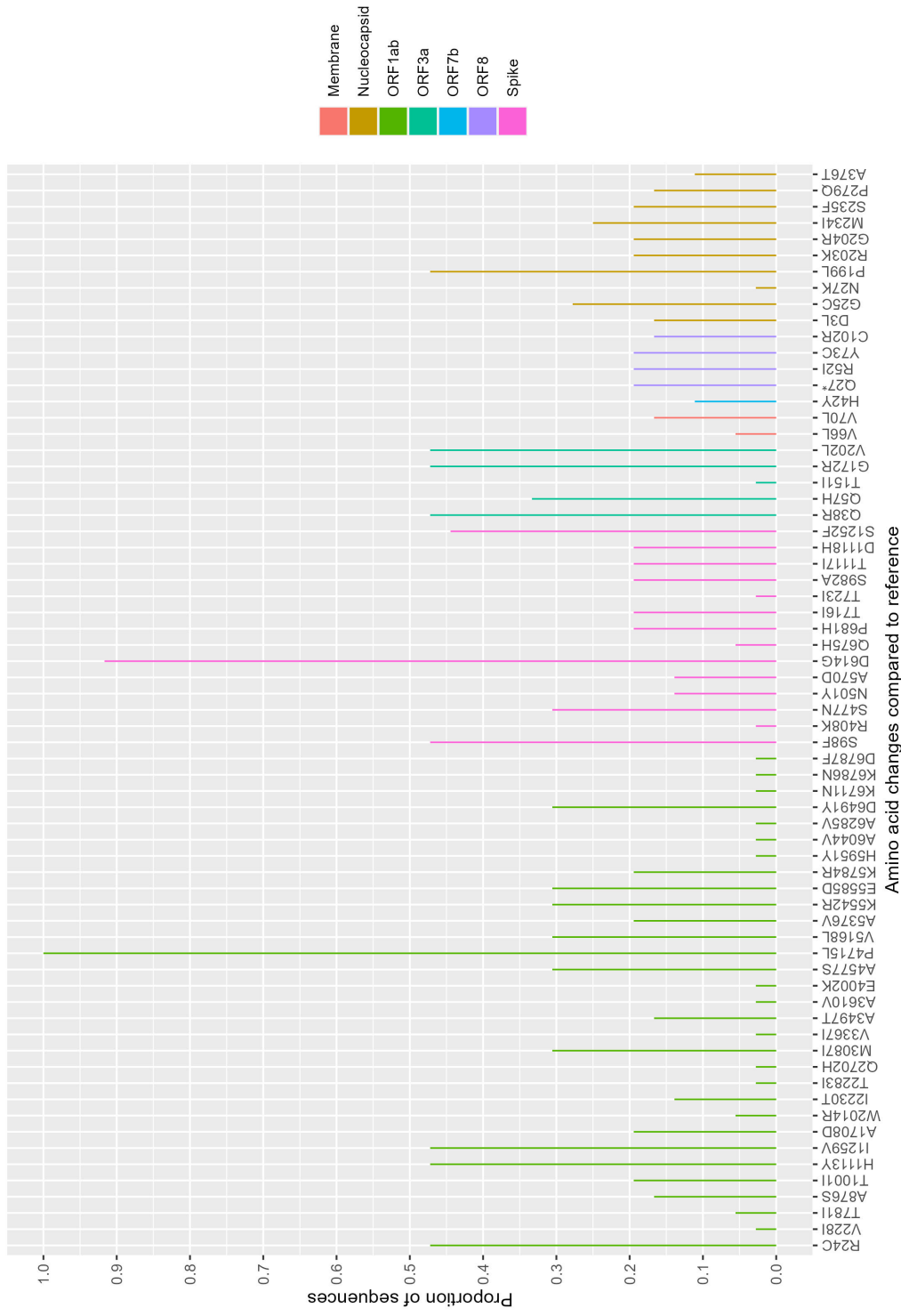


Figure S4: Amino acid changes compared to the Wuhan-Hu-1 reference sequence.

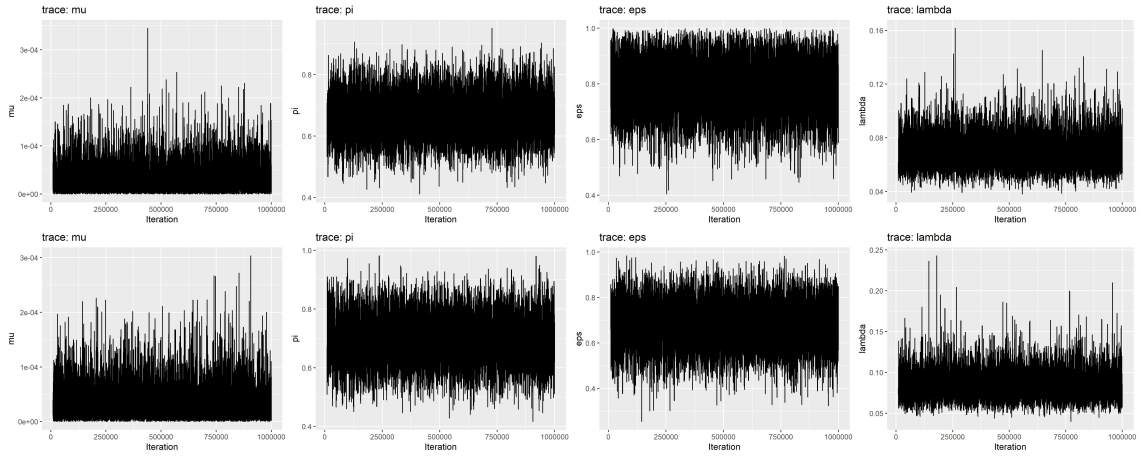


Figure S5: Trace plots showing convergence of the MCMC chain for the baseline (top) and sensitivity (bottom) scenarios of the Outbreaker2 model.

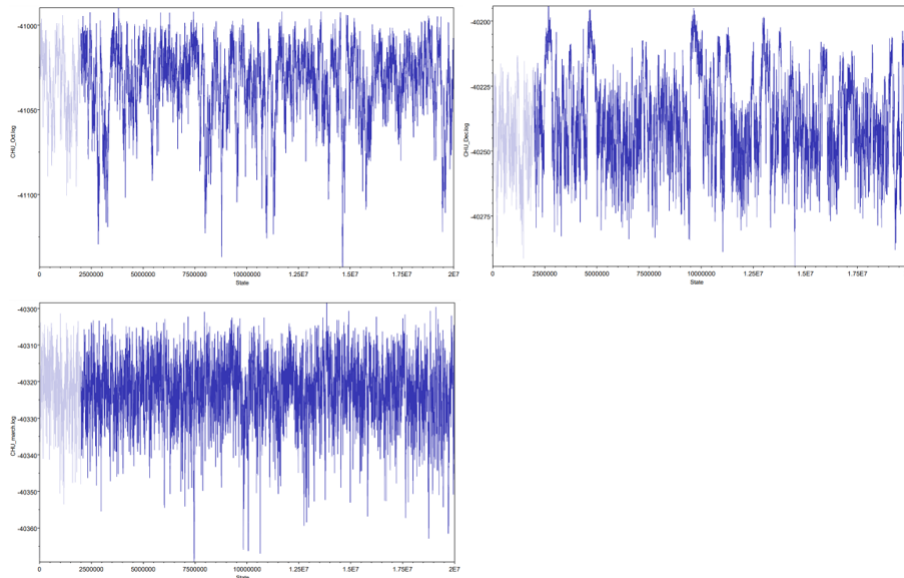


Figure S6: Trace plots showing convergence of the MCMC chain for the SCOTTI model.

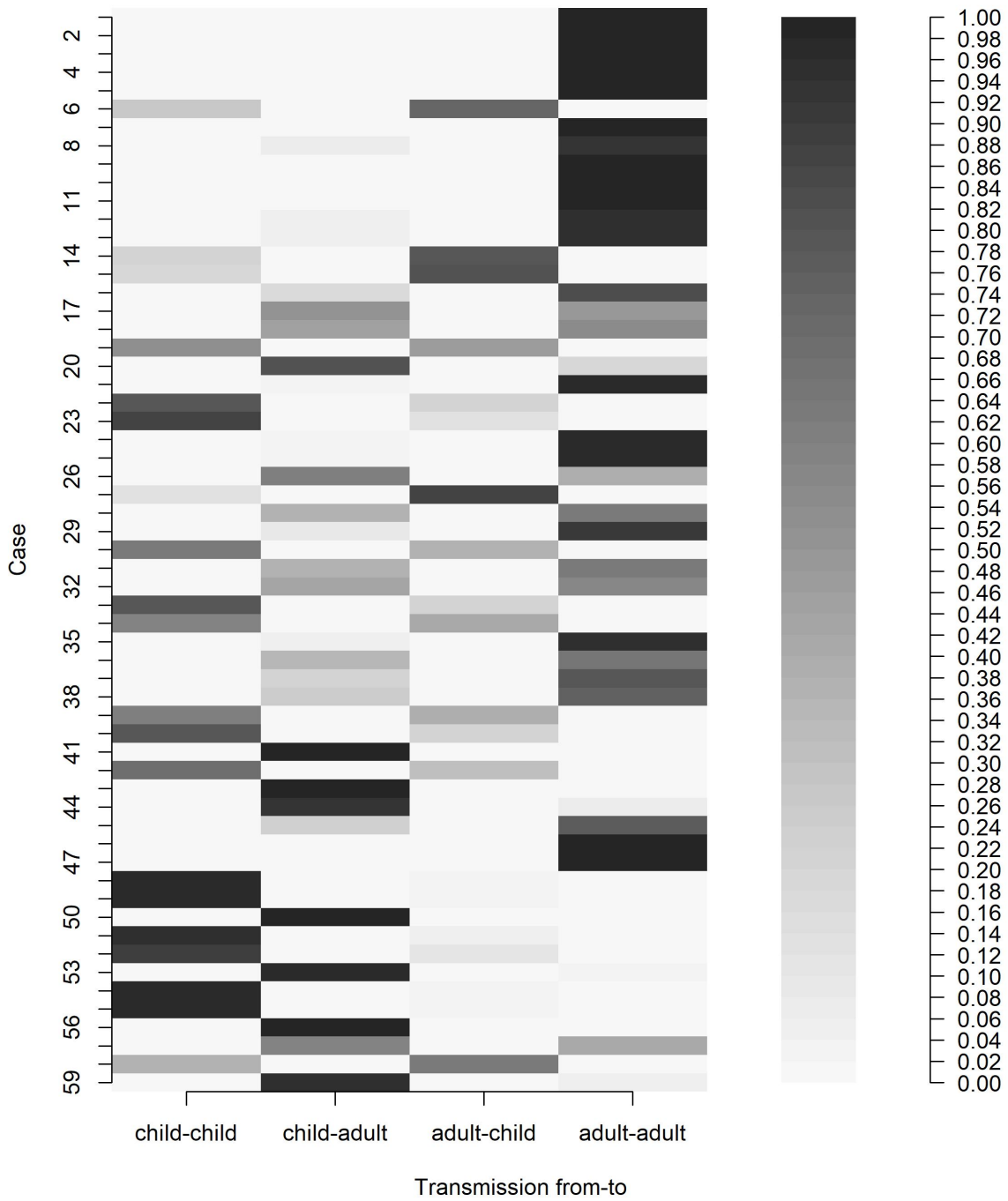


Figure S7: Posterior probabilities of direct transmission events between adults and children under the baseline scenario of the Outbreaker2 model.

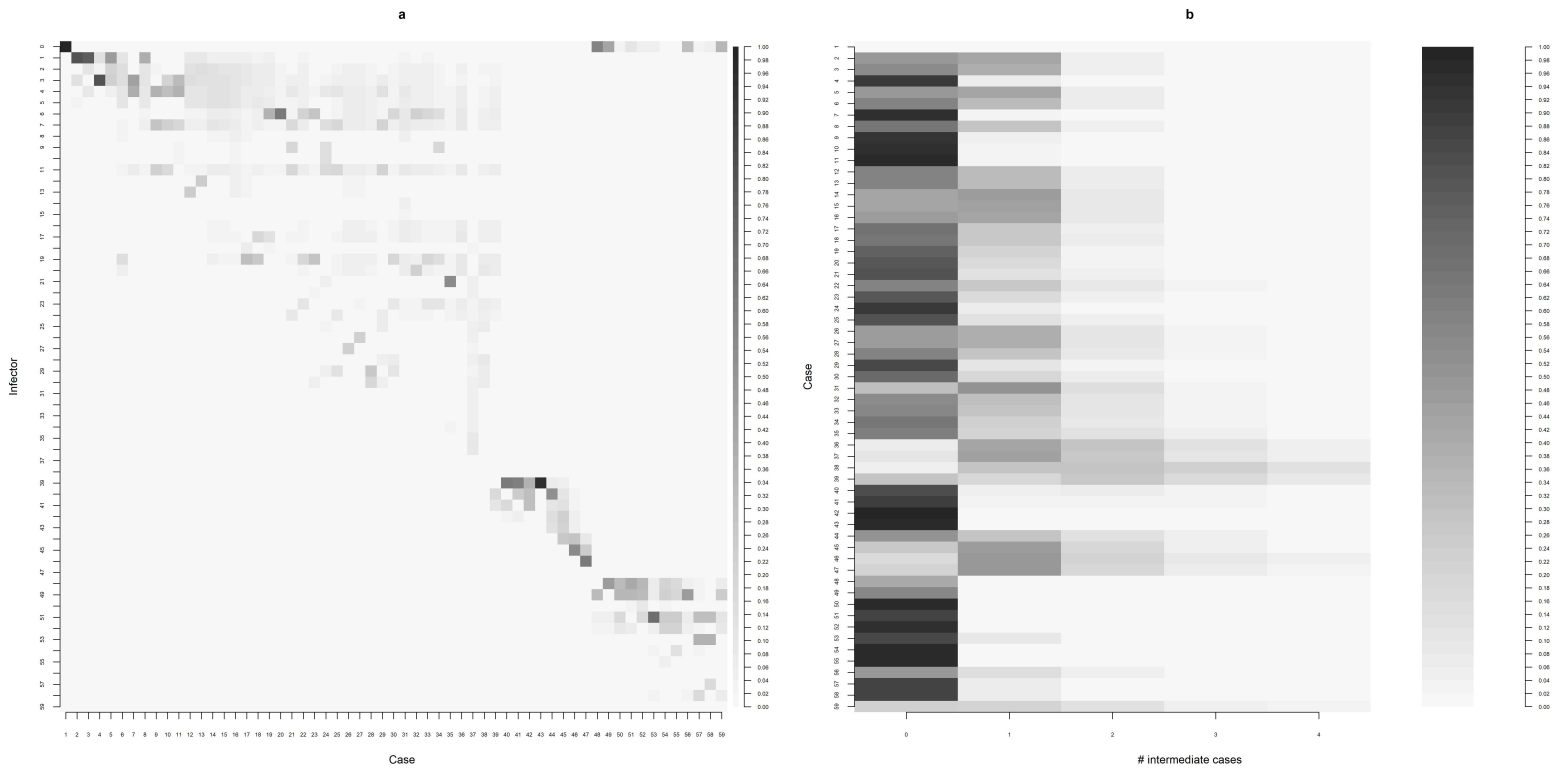


Figure S8: Posterior probabilities for each possible infector (a) and posterior probabilities for the number of intermediate cases (b) under the baseline scenario of the Outbreaker2 model.

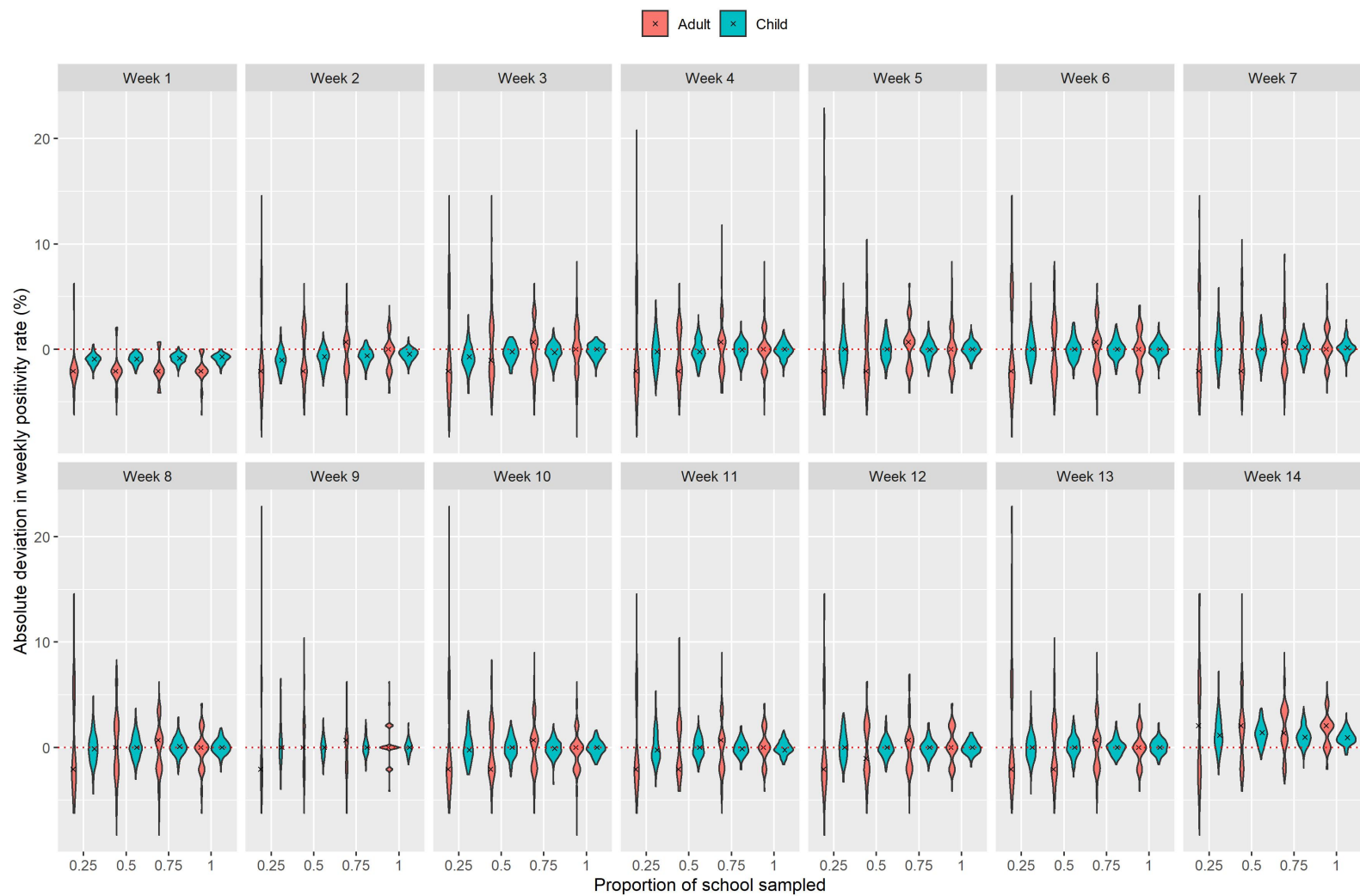


Figure S9: Absolute deviation (observed minus true positivity rate) in estimates of the weekly positivity rate (in %) in adults and children for different proportions of the school sampled under a weekly screening protocol. Black crosses represent the median deviation among 100 simulations.