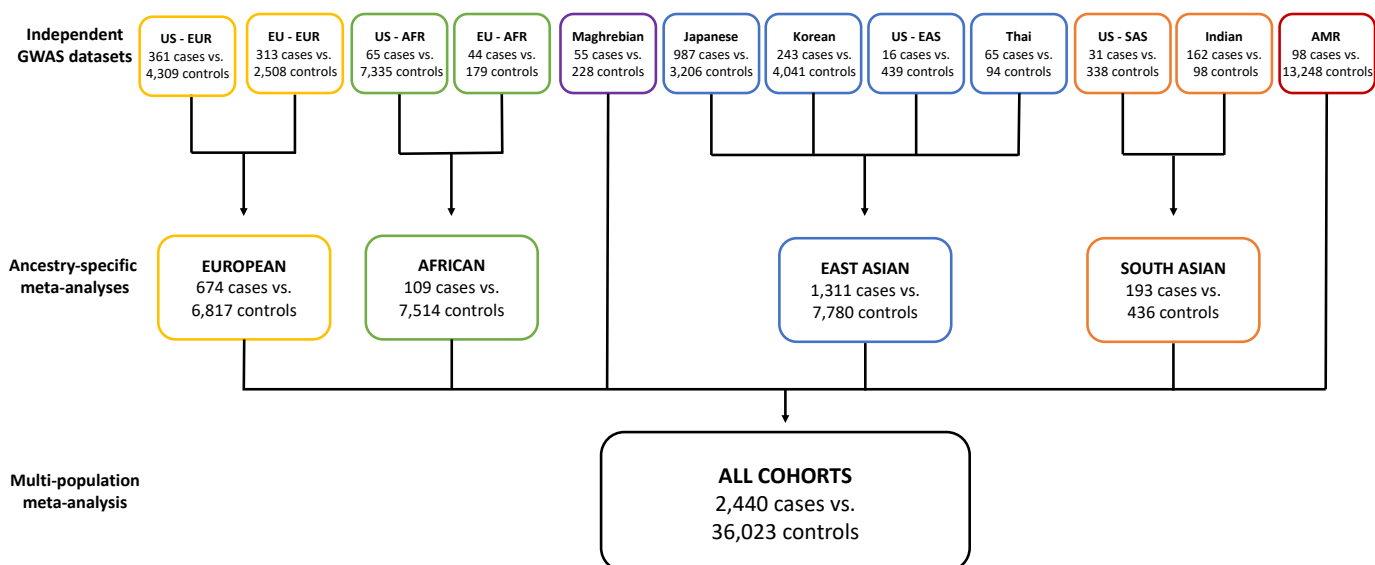


## SUPPLEMENTAL MATERIAL

# Multi-population genome-wide association study implicates both immune and non-immune factors in the etiology of pediatric steroid sensitive nephrotic syndrome

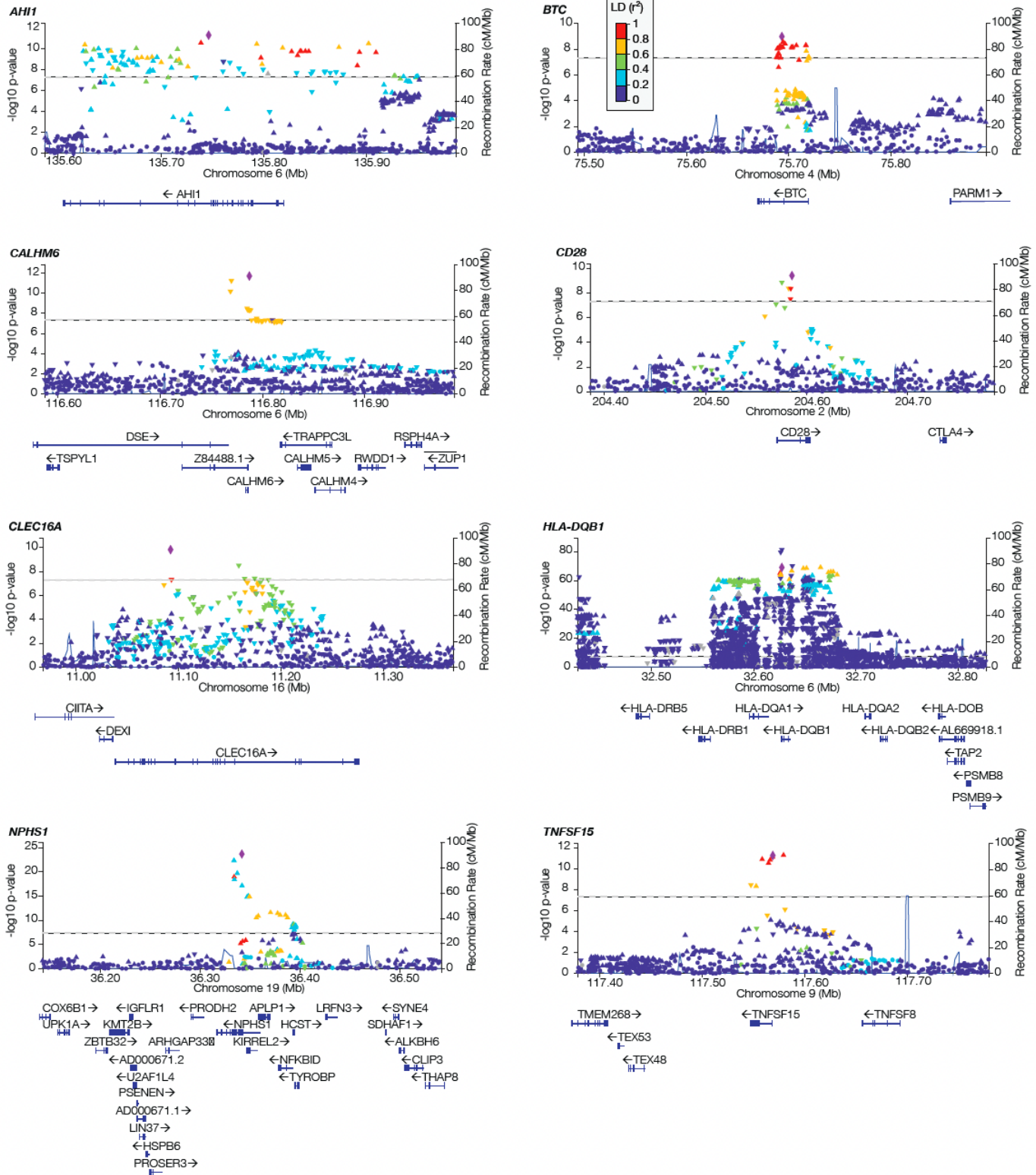
Alexandra Barry<sup>1,2+</sup>, Michelle T. McNulty<sup>1,2+</sup>, Xiaoyuan Jia<sup>3,4+</sup>, Yask Gupta<sup>5+</sup>, Hanna Debiec<sup>6+</sup>, Yang Luo<sup>7,8,9,10</sup>, China Nagano<sup>1,2,11</sup>, Tomoko Horinouchi<sup>11</sup>, Seulgi Jung<sup>12</sup>, Manuela Colucci<sup>13</sup>, Dina F. Ahram<sup>5</sup>, Adele Mitrotti<sup>5,14</sup>, Aditi Sinha<sup>15</sup>, Nynke Teeninga<sup>16</sup>, Gina Jin<sup>5</sup>, Shirlee Shril<sup>17,18</sup>, Gianluca Caridi<sup>19</sup>, Monica Bodria<sup>20</sup>, Tze Y Lim<sup>5</sup>, Rik Westland<sup>21</sup>, Francesca Zanoni<sup>6,22</sup>, Maddalena Marasa<sup>5</sup>, Daniel Turudic<sup>23</sup>, Mario Giordano<sup>24</sup>, Loreto Gesualdo<sup>25</sup>, Riccardo Magistroni<sup>26,27</sup>, Isabella Pisani<sup>28</sup>, Enrico Fiaccadori<sup>28</sup>, Jana Reiterova<sup>29</sup>, Silvio Maringhini<sup>30</sup>, William Morello<sup>31</sup>, Giovanni Montini<sup>31,32</sup>, Patricia L. Weng<sup>33</sup>, Francesco Scolari<sup>34</sup>, Marijan Saraga<sup>35</sup>, Velibor Tasic<sup>36</sup>, Domenica Santoro<sup>37</sup>, Joanna A.E. van Wijk<sup>21</sup>, Danko Milošević<sup>23</sup>, Yosuke Kawai<sup>3,4</sup>, Krzysztof Kiryluk<sup>5</sup>, Martin Pollak<sup>38,39</sup>, Ali Gharavi<sup>5</sup>, Fangmin Lin<sup>39</sup>, Ana Cristina Simões e Silva<sup>40</sup>, Ruth Loos<sup>41</sup>, Eimear Kenny<sup>42,43,44</sup>, Michiel Schreuder<sup>16</sup>, Aleksandra Zurowska<sup>45</sup>, Claire Dossier<sup>46</sup>, Gema Ariceta<sup>47</sup>, Magdalena Drozyska-Duklas<sup>45</sup>, Julien Hogan<sup>46</sup>, Augustina Janauskiene<sup>48</sup>, Friedhelm Hildebrandt<sup>1,18</sup>, Larisa Prikhodina<sup>49</sup>, Kyuyoung Song<sup>12</sup>, Arvind Bagga<sup>15</sup>, Hae Il Cheong<sup>50</sup>, Gian Marco Ghiggeri<sup>51,52,53</sup>, Prayong Vachvanichsanong<sup>54</sup>, Kandai Nozu<sup>11</sup>, Marina Vivarelli<sup>55</sup>, Soumya Raychaudhuri<sup>8,9,10,56,57</sup>, Katsushi Tokunaga<sup>3,4\*</sup>, Simone Sanna-Cherchi<sup>5\*</sup>, Pierre Ronco<sup>6,58\*</sup>, Kazumoto Iijima<sup>59,60\*</sup>, Matthew G. Sampson<sup>1,2,18\*</sup>



**Figure S1. Flow-chart of GWAS.** EUR= European, AFR= African, EAS= East Asian, SAS = South Asian

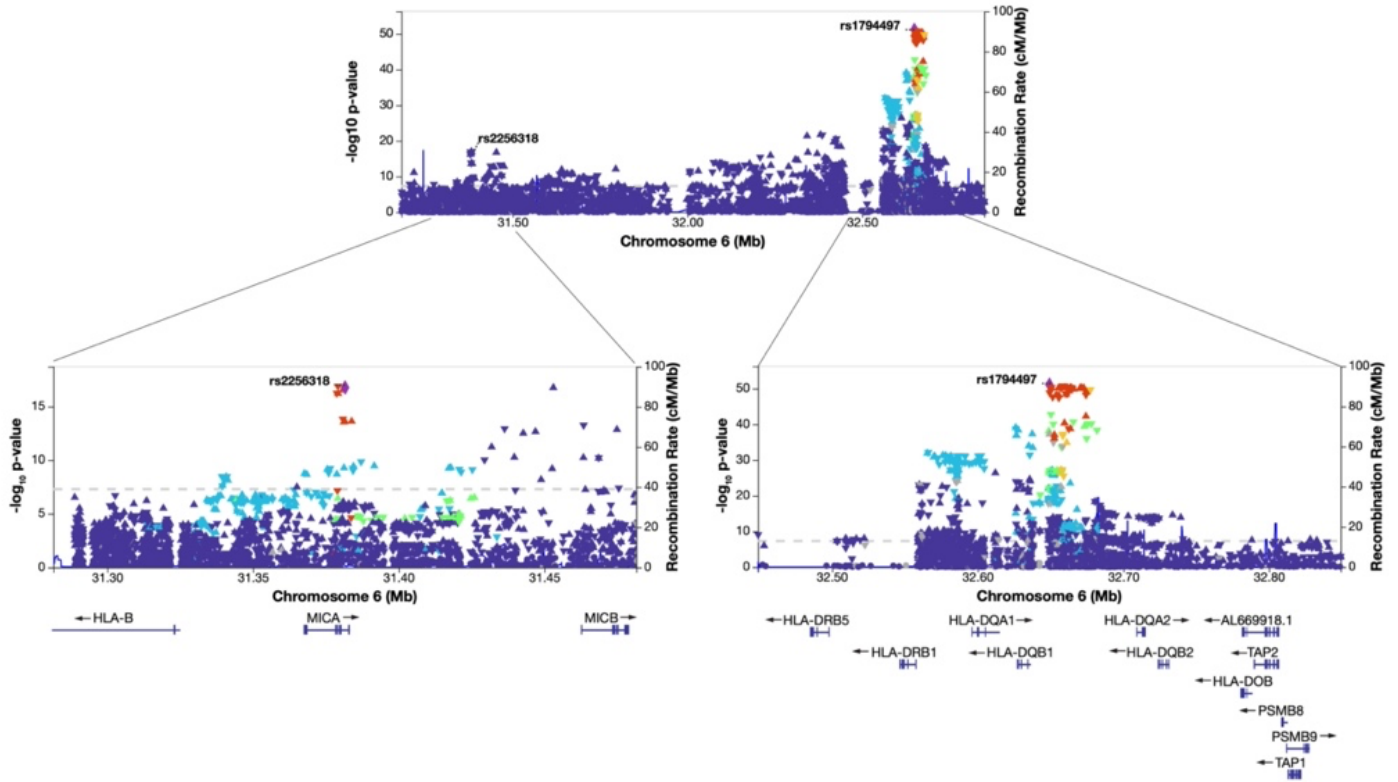
**Table S1. Summary of GWAS datasets**

GWAS Cohort	Ancestry	n cases	n controls	n total	GC-lambda	PCs	n SNPs
Nephrovir/EU	European	313	2,508	2,821	1.05	3	8,112,877
US Cohort	European	361	4,309	4,670	1.06	5	8,316,416
US Cohort	African	65	7,335	7,400	0.84	2	13,421,506
Nephrovir/EU	African	44	179	223	1.02	5	12,413,167
US Cohort	East Asian	16	439	455	1.00	4	6,196,585
Japanese	East Asian	987	3,206	4,193	1.05	4	6,088,373
Korean	East Asian	243	4,041	4,284	1.03	0	2,912,065
Thai	East Asian	65	94	159	1.00	0	4,946,221
US Cohort	South Asian	31	338	369	0.93	3	7,637,355
Indian	South Asian	162	98	260	1.03	3	8,159,073
Maghrebian	Maghrebian	55	228	283	0.90	3	10,072,905
Admixed American	Admixed American	98	13,248	13,346	0.98	3	9,264,840
Total		2,440	36,023	38,463			



**Figure S2: ‘LocusZoom’ of genome-wide significant loci.**

Each figure is labeled by closest gene. Linkage disequilibrium (LD/ $r^2$ ) with the most significant SNP in the reference panel (purple diamond) is estimated from all 1000 genomes populations. P-values are from MR-MEGA association. Horizontal line indicates genome-wide significance threshold ( $5 \times 10^{-8}$ ).



**Figure S3. ‘LocusZoom’ of significant loci from conditional analysis.** Conditioned on: rs55730955, rs28862935, rs1063355, rs2637681, rs7759971, rs10817678, rs8062322, rs56117924. rs2256318 and rs1794497 are ~1.3Mb apart with  $r^2=0.04$  in all 1,000 Genomes samples.

**Table S2. Summary of population-specific meta-analyses.**

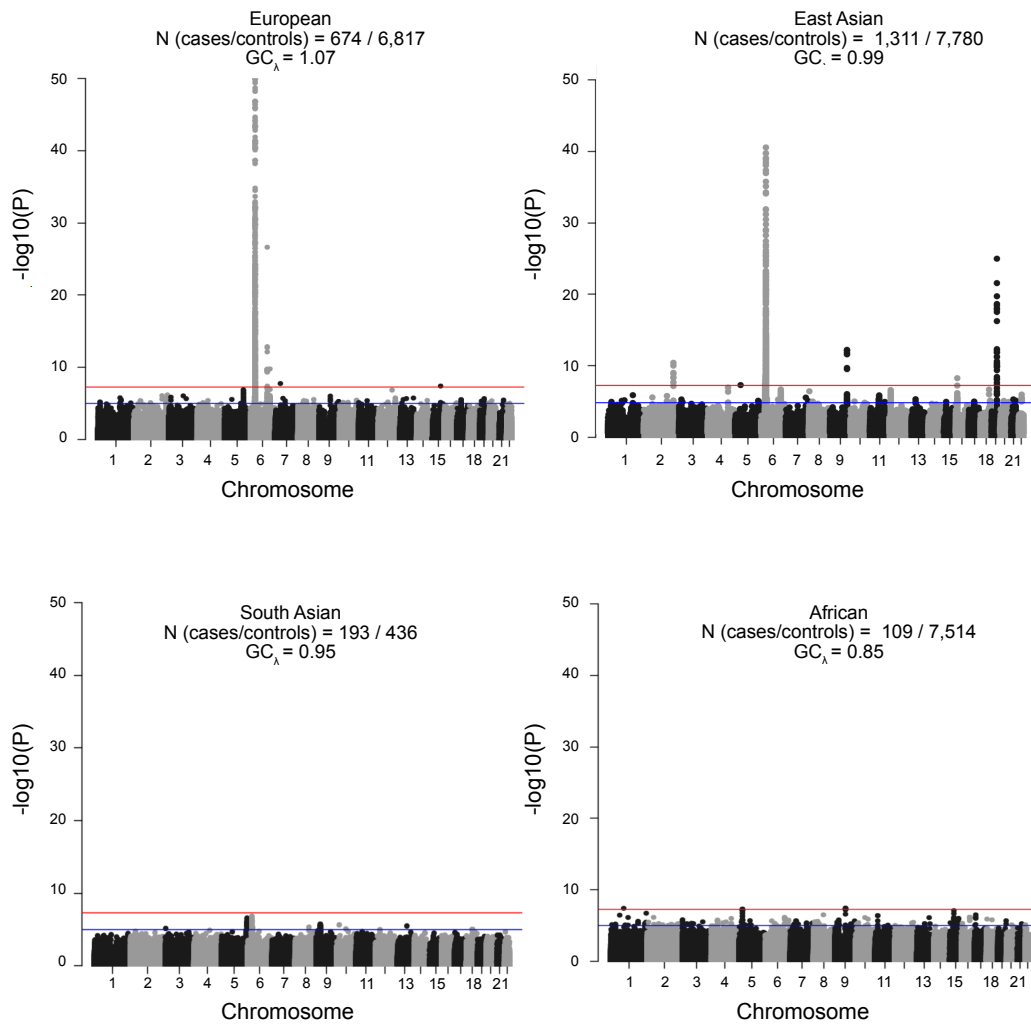
GWAS Cohort	n cases	n controls	n total	GC-lambda	n SNPs
African	109	7,514	7,623	0.85	14,302,064
East Asian	1,311	7,780	9,091	0.99	8,644,038
European	674	6,817	7,491	1.07	8,414,111
South Asian	193	436	629	0.95	8,460,574

**Table S3: Genome-wide significant SNPs from population-specific meta-analyses**

All SNP are > 1Mb from each other with  $r^2 < 0.1$ . Variants showing high within population heterogeneity are removed (HetPVal < 0.05). We found no genome-wide significant associations in the South Asian, African, Admixed American and Maghrebian meta-analyses.

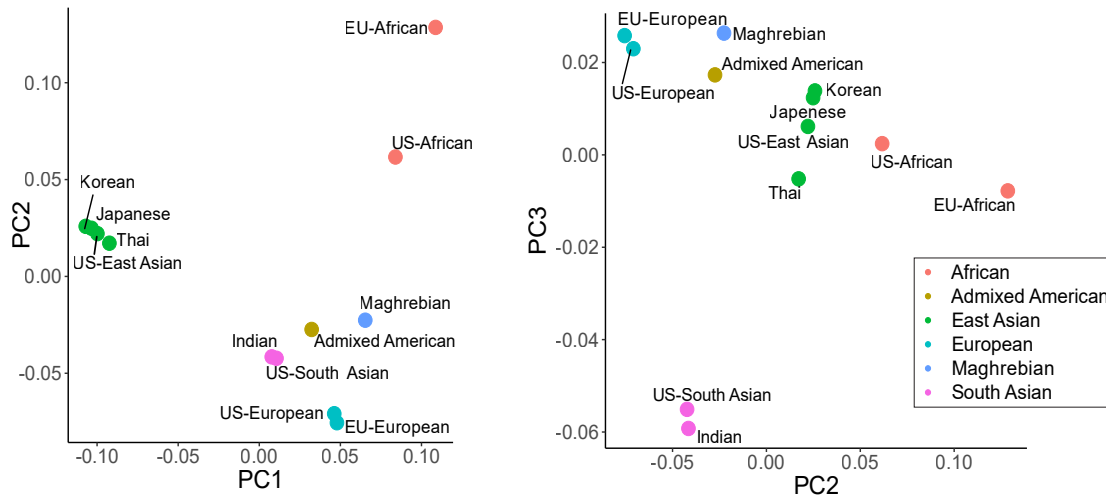
Population	Top SNP	Position (hg19)	Nearest Gene	EA	NEA	OR [95% CI]	P
East Asian	rs9274740	6:32637968	<i>HLA-DQB1</i>	A	T	0.41 [0.36, 0.47]	$1.25 \times 10^{-39}$
East Asian	rs412175	19:36342103	<i>NPHS1</i>	T	C	0.53 [0.47, 0.60]	$7.47 \times 10^{-25}$
East Asian	rs2596485	6:31364870	<i>MICA</i>	T	C	0.61 [0.53, 0.69]	$2.46 \times 10^{-15}$
East Asian	rs7848647	9:117569046	<i>TNFSF15</i>	T	C	0.70 [0.63, 0.77]	$9.57 \times 10^{-13}$
East Asian	rs1181388	2:204575951	<i>CD28</i>	A	G	0.73 [0.66, 0.80]	$4.93 \times 10^{-11}$
East Asian	rs115180879	6:28984623	<i>ZNF311</i>	T	C	3.00 [2.09, 4.32]	$3.10 \times 10^{-9}$
East Asian	rs8062322	16:11092319	<i>CLEC16A</i>	A	C	0.68 [0.59, 0.77]	$5.48 \times 10^{-9}$
European	rs9271747	6:32626037	<i>HLA-DQB1</i>	T	G	3.30 [2.82, 3.86]	$5.69 \times 10^{-51}$
European	rs2637678*	6:116787378	<i>CALHM6</i>	T	C	1.74 [1.58, 1.93]	$2.35 \times 10^{-27}$
European	rs2857607	6:31517248	<i>NFKBIL1</i>	T	C	1.95 [1.66, 2.31]	$1.18 \times 10^{-13}$
European	rs2746419*	6:135653855	<i>AH11</i>	A	C	1.34 [1.22, 1.47]	$1.63 \times 10^{-10}$
European	rs111796602*	7:37402490	<i>ELMO1</i>	T	C	0.68 [0.59, 0.78]	$1.72 \times 10^{-8}$
European	rs12911841	15:79162355	<i>MORF4LI</i>	T	C	2.95 [2.01, 4.34]	$3.88 \times 10^{-8}$

\*European meta-analysis includes summary statistics from the GWAS Catalogue from Dufek et.al., for a total of 1,096 cases and 12,459 controls.

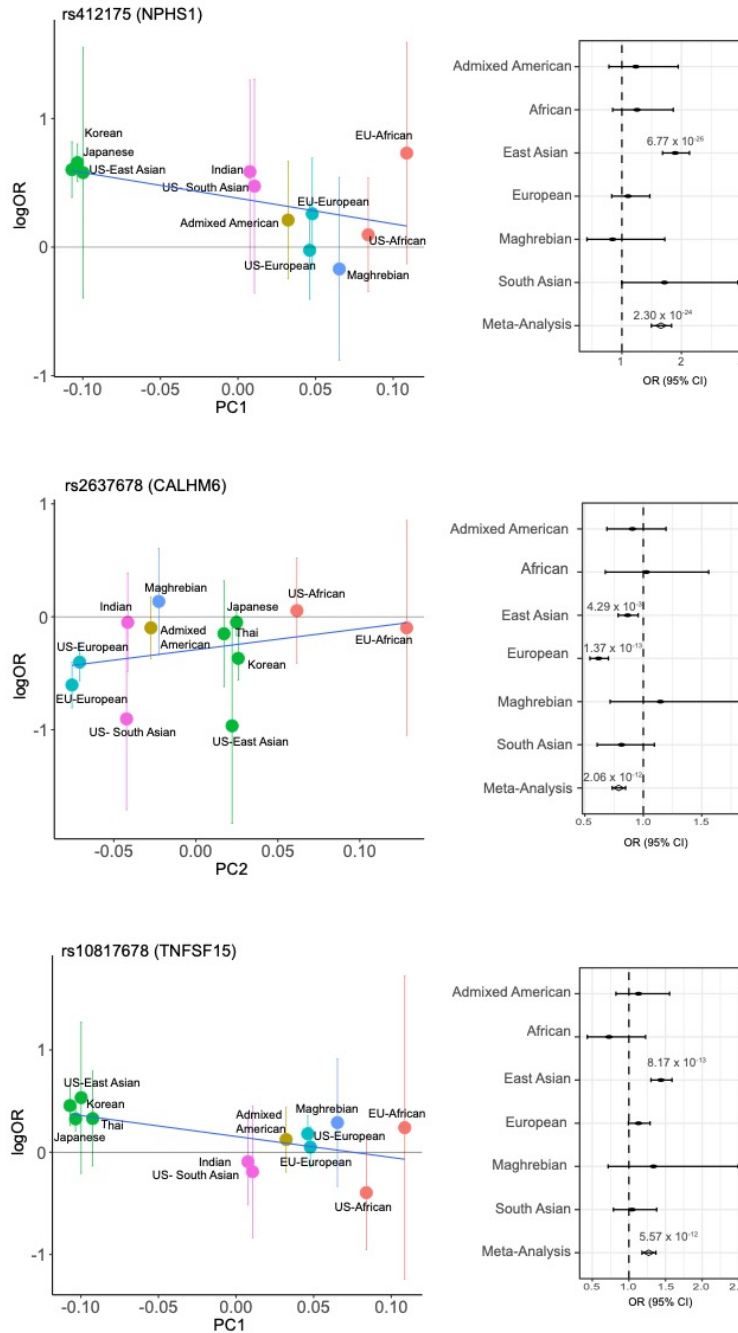


**Figure S4. Manhattan plots of ancestry-specific meta-analyses.**

Red line indicated genome-wide significance threshold ( $5 \times 10^{-8}$ ); blue line is suggestive significance ( $5 \times 10^{-5}$ ). Number of cases and controls and genomic controls lambda are reported for each dataset.



**Figure S5. Dataset principal components (PCs) used in MR-MEGA meta-regression analysis.** Labeled by dataset, colored by population. PCs based off allele frequencies across all GWAS variants.



**Figure S6. Population-specificity of heterogeneous GWAS variants.** Left: correlation of MR-MEGA PCs and logOR for each dataset. Each SNP is labeled with the nearest gene. Right: Forrest plot for population analysis. Significant odds ratios are labeled. logOR = logarithm of the odds ratio, OR [95%CI] = odds ratio with 95% confidence interval.



**Table S4. Suggestive Significant SNPs, Multi-population Meta-analysis.**

Nearest Gene*	Top SNP	Position (hg19)	EA	NEA	Fixed-effects meta-analysis			Meta-regression (MR-MEGA)	
					OR [95% CI]	P-value	Het I <sup>2</sup> P-value	P-value	Ancestry het P-value
<i>GSDMB</i>	rs9303279	17:38073968	G	C	1.22 [1.13, 1.31]	1.88 x 10 <sup>-7</sup>	0.16	2.49 x 10 <sup>-7</sup>	0.05
<i>TNSFS4</i>	rs1012507	1:173219471	T	G	1.20 [1.11, 1.29]	5.73 x 10 <sup>-6</sup>	0.05	2.92 x 10 <sup>-7</sup>	2.52 x 10 <sup>-3</sup>
<i>DHX15*</i>	rs16875349	4:24215917	C	T	1.34 [1.21, 1.48]	1.09 x 10 <sup>-8</sup>	0.01	3.56 x 10 <sup>-7</sup>	0.81
<i>PHC1</i>	rs1805732	12:9090892	T	C	0.82 [0.76, 0.88]	1.71 x 10 <sup>-7</sup>	0.51	4.65 x 10 <sup>-7</sup>	0.10
<i>MORF4L1</i>	rs12911841	15:79162355	T	C	1.82 [1.43, 2.30]	6.92 x 10 <sup>-7</sup>	0.03	5.82 x 10 <sup>-7</sup>	0.03
<i>CLIC4</i>	rs4649032	1:25197586	T	C	1.20 [1.12, 1.30]	1.18 x 10 <sup>-6</sup>	0.16	1.18 x 10 <sup>-6</sup>	0.03
<i>KC6</i>	rs16975006	18:39160883	T	G	1.68 [1.39, 2.02]	6.21 x 10 <sup>-8</sup>	0.39	1.64 x 10 <sup>-6</sup>	0.38
<i>C16orf95</i>	rs7197567	16:86980044	T	C	1.31 [1.18, 1.45]	3.85 x 10 <sup>-7</sup>	0.75	2.69 x 10 <sup>-6</sup>	0.23
<i>COCH</i>	rs12431424	14:31318179	A	T	0.78 [0.7, 0.87]	3.67 x 10 <sup>-6</sup>	0.15	3.14 x 10 <sup>-6</sup>	0.03
<i>SRBD1*</i>	rs78341222	2:45539561	A	G	1.51 [1.15, 1.99]	3.27 x 10 <sup>-3</sup>	5.48 x 10 <sup>-4</sup>	3.71 x 10 <sup>-6</sup>	6.09 x 10 <sup>-5</sup>
<i>BAD</i>	rs477895	11:64048912	C	T	1.19 [1.1, 1.29]	3.44 x 10 <sup>-5</sup>	0.07	3.81 x 10 <sup>-6</sup>	4.56 x 10 <sup>-3</sup>
<i>RRP12</i>	rs6584128	10:99171926	G	T	1.21 [1.13, 1.3]	1.74 x 10 <sup>-7</sup>	0.19	5.10 x 10 <sup>-6</sup>	0.75
<i>NFIA</i>	rs75447844	1:61807924	T	C	1.71 [1.3, 2.24]	1.12 x 10 <sup>-4</sup>	4.69 x 10 <sup>-3</sup>	7.36 x 10 <sup>-6</sup>	2.58 x 10 <sup>-3</sup>

\* Closest gene was not protein coding. SNPs with P-value > 0.05 in METAL were excluded.

**Table S5. Allele frequency of genome-wide and suggestive significant SNPs across ancestries.**

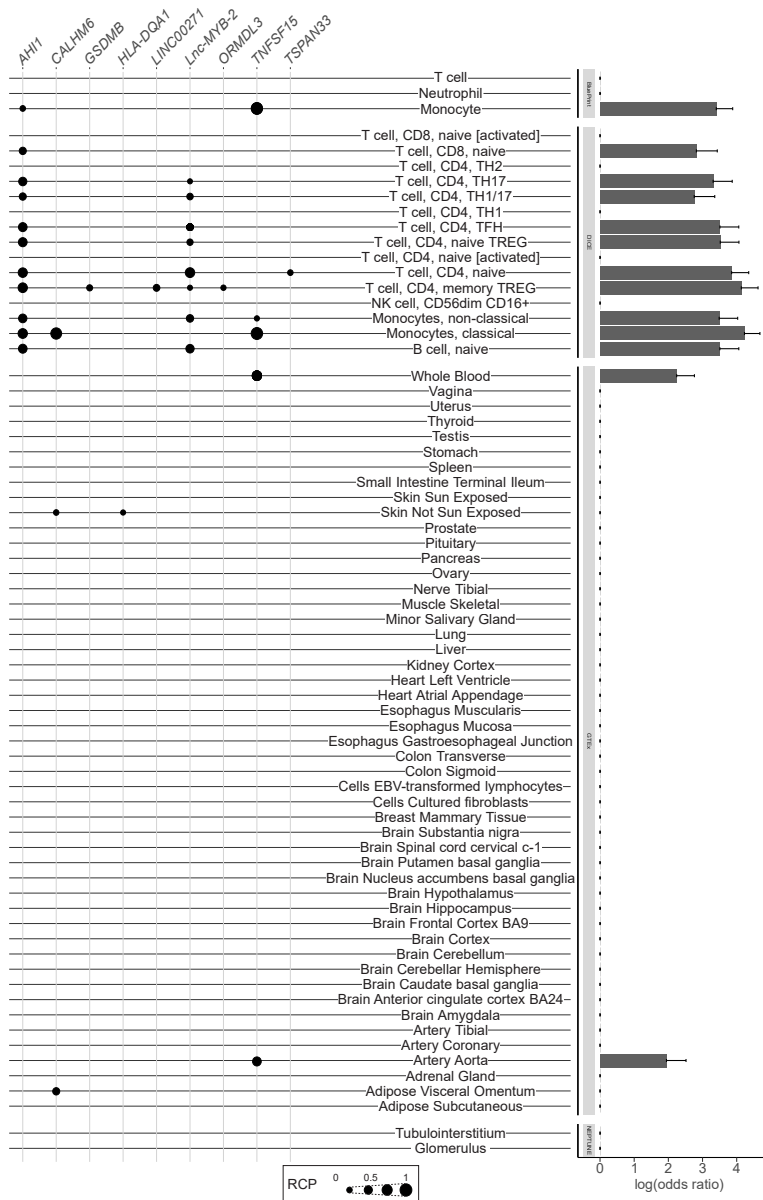
Nearest Gene	Top SNP	EA	European		South Asian		East Asian		African		Maghrebian		Admixed American	
			Case	Control	Case	Control	Case	Control	Case	Control	Case	Control	Case	Control
<i>HLA-DQB1</i>	rs1063355	T	0.22	<b>0.40</b>	0.35	<b>0.49</b>	0.28	<b>0.44</b>	0.28	<b>0.46</b>	0.15	<b>0.38</b>	0.17	<b>0.34</b>
<i>NPHS1</i>	rs412175	C	<b>0.05</b>	0.04	<b>0.10</b>	0.06	<b>0.24</b>	0.15	<b>0.46</b>	0.34	0.12	<b>0.14</b>	<b>0.18</b>	0.15
<i>CALHM6</i>	rs2637678	C	0.33	<b>0.43</b>	0.21	<b>0.26</b>	0.40	<b>0.44</b>	0.22	<b>0.29</b>	<b>0.52</b>	0.50	<b>0.43</b>	0.38
<i>AH11</i>	rs7759971	T	<b>0.40</b>	0.35	<b>0.42</b>	0.39	<b>0.26</b>	0.22	0.19	<b>0.21</b>	<b>0.35</b>	0.21	<b>0.37</b>	0.30
<i>TNSFS15</i>	rs10817678	G	0.29	<b>0.33</b>	<b>0.26</b>	0.22	0.34	<b>0.44</b>	0.13	<b>0.17</b>	0.15	<b>0.18</b>	0.23	<b>0.24</b>
<i>CLEC16A</i>	rs8062322	A	0.31	<b>0.34</b>	0.30	<b>0.38</b>	0.14	<b>0.19</b>	<b>0.46</b>	0.44	0.20	<b>0.34</b>	<b>0.33</b>	0.30
<i>CD28</i>	rs55730955	A	0.05	<b>0.06</b>	0.09	0.09	0.45	<b>0.55</b>	0.07	<b>0.08</b>	0.05	<b>0.10</b>	0.08	<b>0.11</b>
<i>BTC</i>	rs28862935	A	<b>0.23</b>	0.16	<b>0.28</b>	0.25	<b>0.06</b>	0.05	<b>0.48</b>	0.36	<b>0.44</b>	0.30	<b>0.34</b>	0.23
<i>GSDMB</i>	rs9303279	G	<b>0.50</b>	0.45	0.41	<b>0.42</b>	<b>0.30</b>	0.26	0.11	<b>0.21</b>	<b>0.42</b>	0.33	<b>0.35</b>	0.34
<i>TNSFS4*</i>	rs1012507	T	<b>0.37</b>	0.34	0.32	0.32	<b>0.25</b>	0.23	0.24	<b>0.29</b>	0.21	<b>0.26</b>	0.34	<b>0.39</b>
<i>DHX15*</i>	rs16875349	C	<b>0.07</b>	0.06	<b>0.14</b>	0.12	<b>0.24</b>	0.18	<b>0.17</b>	0.14	0.05	<b>0.06</b>	0.06	<b>0.09</b>
<i>PHC1</i>	rs1805732	T	0.40	<b>0.43</b>	0.47	0.47	0.42	<b>0.48</b>	0.15	<b>0.21</b>	0.30	<b>0.38</b>	0.35	<b>0.38</b>
<i>MORF4L1</i>	rs12911841	T	<b>0.03</b>	0.01	-	-	-	-	<b>0.27</b>	0.18	0.18	0.18	<b>0.10</b>	0.05
<i>CLIC4</i>	rs4649032	T	<b>0.50</b>	0.49	<b>0.43</b>	0.35	<b>0.49</b>	0.44	<b>0.44</b>	0.40	0.47	<b>0.48</b>	<b>0.44</b>	0.41
<i>KC6</i>	rs16975006	T	<b>0.03</b>	0.02	<b>0.04</b>	0.02	0.01	0.01	<b>0.25</b>	0.20	<b>0.12</b>	0.06	<b>0.12</b>	0.06
<i>C16orf95</i>	rs7197567	T	<b>0.09</b>	0.06	0.06	<b>0.07</b>	<b>0.21</b>	0.18	<b>0.54</b>	0.42	<b>0.23</b>	0.19	<b>0.22</b>	0.20
<i>COCH</i>	rs12431424	A	0.13	<b>0.15</b>	0.10	<b>0.15</b>	0.16	<b>0.18</b>	0.12	<b>0.19</b>	<b>0.12</b>	0.10	0.09	<b>0.21</b>
<i>SRBD1*</i>	rs78341222	A	0.03	0.03	<b>0.05</b>	0.04	-	-	-	-	<b>0.07</b>	0.03	<b>0.05</b>	0.02
<i>BAD</i>	rs477895	C	<b>0.19</b>	0.18	0.26	<b>0.27</b>	<b>0.25</b>	0.21	<b>0.56</b>	0.43	<b>0.49</b>	0.34	<b>0.31</b>	0.21
<i>RRP12</i>	rs6584128	G	<b>0.37</b>	0.34	<b>0.42</b>	0.40	<b>0.36</b>	0.30	<b>0.64</b>	0.53	<b>0.55</b>	0.51	<b>0.43</b>	0.37
<i>NF1A</i>	rs75447844	T	0.02	0.02	<b>0.09</b>	0.05	0.13	<b>0.15</b>	-	-	0.01	0.01	0.06	<b>0.14</b>

\* Closest gene was not protein coding. The group with higher frequency is indicated in bold. EA = effect allele

**Table S6. SNPs that significantly colocalize with tissue and cell type eQTLs.**

Top colocalized SSNS GWAS / eQTL loci (RCP > 0.2). Each row represents a SSNS associated SNP that also associates with tissue/cell-type gene expression. The top SNP (highest SCP) for each gene-tissue association is included. RCP = regional colocalization probability, SCP = SNP colocalization probability.

RS ID	Position (hg19)	Ensembl Gene ID	Gene Symbol	Study	Tissue/Cell type	RCP	SCP
rs7759971	6:135746884	ENSG00000135541	<i>AH11</i>	DICE	Monocytes, classical	0.65	0.23
rs6908428	6:135793706	ENSG00000135541	<i>AH11</i>	DICE	T cell, CD4, memory TREG	0.65	0.62
rs6908428	6:135793706	ENSG00000135541	<i>AH11</i>	DICE	T cell, CD4, naive	0.62	0.62
rs6908428	6:135793706	ENSG00000135541	<i>AH11</i>	DICE	T cell, CD4, naive TREG	0.57	0.57
rs6908428	6:135793706	ENSG00000135541	<i>AH11</i>	DICE	T cell, CD4, TFH	0.56	0.56
rs6908428	6:135793706	ENSG00000135541	<i>AH11</i>	DICE	B cell, naive	0.56	0.56
rs6908428	6:135793706	ENSG00000135541	<i>AH11</i>	DICE	Monocytes, non-classical	0.53	0.52
rs6908428	6:135793706	ENSG00000135541	<i>AH11</i>	DICE	T cell, CD4, TH17	0.51	0.51
rs6908428	6:135793706	ENSG00000135541	<i>AH11</i>	DICE	T cell, CD8, naive	0.40	0.40
rs6908428	6:135793706	ENSG00000135541	<i>AH11</i>	DICE	T cell, CD4, TH1/17	0.39	0.39
rs7759971	6:135746884	ENSG00000135541	<i>AH11</i>	BluePrint	Monocyte	0.26	0.10
rs2637678	6:116787378	ENSG00000188820	<i>CALHM6</i>	DICE	Monocytes, classical	0.86	0.86
rs2637681	6:116769845	ENSG00000188820	<i>CALHM6</i>	GTEEx	Adipose visceral omentum	0.39	0.39
rs2637681	6:116769845	ENSG00000188820	<i>CALHM6</i>	GTEEx	Skin (not sun exposed)	0.25	0.25
rs8076131	17:38080912	ENSG00000073605	<i>GSDMB</i>	DICE	T cell, CD4, memory TREG	0.29	0.16
rs5024432	6:32684468	ENSG00000237541	<i>HLA-DQA1</i>	GTEEx	Skin (not sun exposed)	0.22	0.13
rs6908428	6:135793706	ENSG00000231028	<i>LINC00271</i>	DICE	T cell, CD4, memory TREG	0.36	0.07
rs6908428	6:135793706	ENSG00000234084	<i>Lnc-MYB-2</i>	DICE	T cell, CD4, naive	0.66	0.26
rs6908428	6:135793706	ENSG00000234084	<i>Lnc-MYB-3</i>	DICE	B cell, naive	0.52	0.51
rs7759971	6:135746884	ENSG00000234084	<i>Lnc-MYB-4</i>	DICE	Monocytes, non-classical	0.42	0.17
rs6908428	6:135793706	ENSG00000234084	<i>Lnc-MYB-5</i>	DICE	T cell, CD4, TH1/17	0.33	0.32
rs6908428	6:135793706	ENSG00000234084	<i>Lnc-MYB-6</i>	DICE	T cell, CD4, TFH	0.33	0.20
rs6908428	6:135793706	ENSG00000234084	<i>Lnc-MYB-7</i>	DICE	T cell, CD4, naive TREG	0.31	0.19
rs6908428	6:135793706	ENSG00000234084	<i>Lnc-MYB-8</i>	DICE	T cell, CD4, memory TREG	0.22	0.09
rs6908428	6:135793706	ENSG00000234084	<i>Lnc-MYB-9</i>	DICE	T cell, CD4, TH17	0.21	0.10
rs12941333	17:38040534	ENSG00000172057	<i>ORMDL3</i>	DICE	T cell, CD4, memory TREG	0.23	0.02
rs7848647	9:117569046	ENSG00000181634	<i>TNFSF15</i>	DICE	Monocytes, classical	0.95	0.28
rs10817678	9:117579457	ENSG00000181634	<i>TNFSF15</i>	BluePrint	Monocyte	0.90	0.69
rs6478108	9:117558703	ENSG00000181634	<i>TNFSF15</i>	GTEEx	Whole blood	0.62	0.43
rs6478109	9:117568766	ENSG00000181634	<i>TNFSF15</i>	GTEEx	Artery_Aorta	0.57	0.30
rs7848647	9:117569046	ENSG00000181634	<i>TNFSF15</i>	DICE	Monocytes, non-classical	0.22	0.05
rs111922894	7:129178359	ENSG00000158457	<i>TSPAN33</i>	DICE	T cell, CD4, naive	0.25	0.25



**Figure S7. Colocalization of SSNS GWAS and all eQTL datasets.** Each eQTL data set is labeled with colocalized loci to the right and enrichment estimates to the left. Genes with regional colocalization probability (RCP) > 0.2 in at least one tissue/cell are included. SSNS GWAS loci that colocalized with tissue/cell-type eQTLs are indicated by black dots, with larger dots indicating higher regional colocalization probability (RCP). Enrichment estimates, from fastENLOC, are based of genome-wide summary statistics from GWAS and include a shrinkage parameter, resulting in 0 enrichment for multiple tissues/cell-types.

**Table S7. Credible sets for genome-wide significant loci in multi-population meta-analysis with open chromatin annotation.**

RS ID	Position (hg19)	EA	NEA	P-value (MR-MEGA)	PIP	Location	Closest Gene	Kidney open chromatin	Immune open chromatin
rs8062322	16:11092319	A	C	8.98 x 10 <sup>-12</sup>	0.93	intronic	<i>CLEC16A</i>		
rs9652601	16:11174365	A	G	1.18 x 10 <sup>-9</sup>	0.01	intronic	<i>CLEC16A</i>	<i>POD,ENDO,PT1,PT2,PT3,PT,LH,PC,LEUK</i>	<i>CMP</i>
rs7204643	16:11167603	C	T	1.46 x 10 <sup>-9</sup>	0.01	intronic	<i>CLEC16A</i>	<i>ENDO,PT1,PT2,PT,LH,DCT,CNT,PC,ICB</i>	<i>GMP,LMPP,MEP</i>
rs887864	16:11158885	G	A	1.45 x 10 <sup>-9</sup>	0.01	intronic	<i>CLEC16A</i>		
rs7200940	16:11164567	G	C	1.56 x 10 <sup>-9</sup>	0.01	intronic	<i>CLEC16A</i>		
rs412175	19:36342103	C	T	2.29 x 10 <sup>-24</sup>	0.94	Intronic	<i>NPHS1</i>	<i>ENDO, PT2</i>	
rs56117924	19:36334182	A	G	4.98 x 10 <sup>-23</sup>	0.05	intronic	<i>NPHS1</i>		
rs55730955	2:204585956	A	T	1.00 x 10 <sup>-11</sup>	0.72	intronic	<i>CD28</i>		<i>CD4,CD8</i>
rs4673259	2:204582623	C	T	3.95 x 10 <sup>-11</sup>	0.19	intronic	<i>CD28</i>		<i>CD4,CD34,CMP,GMP,HSC,LMPP,MEP</i>
rs3769684	2:204584759	C	T	1.22 x 10 <sup>-10</sup>	0.07	intronic	<i>CD28</i>	<i>LEUK</i>	<i>CD4,CD8,NK</i>
rs28862935	4:75693465	A	G	4.29 x 10 <sup>-11</sup>	0.21	intronic	<i>BTC</i>		
rs10005089	4:75694606	T	C	9.38 x 10 <sup>-11</sup>	0.10	intronic	<i>BTC</i>	<i>PEC,ENDO,PT1,PT2,PT3,PT,LH,DCT,CNT,PC,ICA,ICB,</i>	<i>HSC,LMPP,MEP,MPP</i>
rs6532431	4:75696612	G	T	1.50 x 10 <sup>-10</sup>	0.06	intronic	<i>BTC</i>		
rs28420261	4:75693713	A	C	1.77 x 10 <sup>-10</sup>	0.05	intronic	<i>BTC</i>		
rs4859427	4:75691379	A	G	1.92 x 10 <sup>-10</sup>	0.05	intronic	<i>BTC</i>		
rs60799154	4:75692264	T	C	2.05 x 10 <sup>-10</sup>	0.05	intronic	<i>BTC</i>		
rs28773846	4:75692704	G	T	2.20 x 10 <sup>-10</sup>	0.05	intronic	<i>BTC</i>		
rs72867560	4:75691141	A	G	2.49 x 10 <sup>-10</sup>	0.04	intronic	<i>BTC</i>		<i>ERY</i>
rs59882675	4:75689112	G	A	2.64 x 10 <sup>-10</sup>	0.04	intronic	<i>BTC</i>		
rs28478898	4:75689280	G	C	2.66 x 10 <sup>-10</sup>	0.04	intronic	<i>BTC</i>		
rs28472417	4:75689353	C	T	2.66 x 10 <sup>-10</sup>	0.04	intronic	<i>BTC</i>		
rs10009801	4:75694208	C	T	2.82 x 10 <sup>-10</sup>	0.03	intronic	<i>BTC</i>		
rs28577058	4:75716947	A	G	3.02 x 10 <sup>-10</sup>	0.03	intronic	<i>BTC</i>	<i>POD,MESFIB,CNT,PC,ICA,ICB</i>	
rs28681122	4:75717024	A	G	3.38 x 10 <sup>-10</sup>	0.03	intronic	<i>BTC</i>		
rs10023748	4:75703330	G	T	3.89 x 10 <sup>-10</sup>	0.02	intronic	<i>BTC</i>		
rs28576102	4:75704143	G	A	4.18 x 10 <sup>-10</sup>	0.02	intronic	<i>BTC</i>		
rs72867585	4:75702876	G	A	4.30 x 10 <sup>-10</sup>	0.02	intronic	<i>BTC</i>		
rs28522727	4:75707658	C	T	4.33 x 10 <sup>-10</sup>	0.02	intronic	<i>BTC</i>		
rs6848247	4:75690027	G	T	9.82 x 10 <sup>-10</sup>	0.01	intronic	<i>BTC</i>		
rs28458910	4:75688543	G	A	9.97 x 10 <sup>-10</sup>	0.01	intronic	<i>BTC</i>		
rs28822209	4:75690673	A	G	1.09 x 10 <sup>-9</sup>	0.01	intronic	<i>BTC</i>		
rs28565087	4:75688563	G	A	1.10 x 10 <sup>-9</sup>	0.01	intronic	<i>BTC</i>		
rs2637681	6:116769845	G	T	3.27 x 10 <sup>-11</sup>	0.52	intergenic	<i>CALHM6</i>		
rs2637678	6:116787378	C	T	5.54 x 10 <sup>-11</sup>	0.31	intergenic	<i>CALHM6</i>		
rs2858829	6:116768917	G	A	6.27 x 10 <sup>-10</sup>	0.03	intergenic	<i>CALHM6</i>	<i>LEUK</i>	<i>CD34,CMP,GMP,HSC,LMPP,MEP, MONO,MPP</i>
rs61449271	6:116795040	A	G	8.26 x 10 <sup>-10</sup>	0.02	intergenic	<i>CALHM6</i>		

rs9400917	6:116794335	A	G	1.03 x 10 <sup>-9</sup>	0.02	intergenic	CALHM6		
rs34900657	6:116808418	G	T	1.07 x 10 <sup>-9</sup>	0.02	intergenic	CALHM6	POD	
rs6925168	6:116799297	A	G	1.39 x 10 <sup>-9</sup>	0.01	intergenic	CALHM6		
rs4945556	6:116785195	G	A	1.64 x 10 <sup>-9</sup>	0.01	downstream	CALHM6		
rs7759971	6:135746884	T	C	3.11 x 10 <sup>-14</sup>	0.52	intronic	AHI1		CD34, CLP, CMP, HSC, MPP
rs6928977	6:135626348	T	G	1.99 x 10 <sup>-13</sup>	0.09	intronic	AHI1		
rs11154801	6:135739355	A	C	1.97 x 10 <sup>-13</sup>	0.08	intronic	AHI1		CD34, CMP, HSC, LMPP, MEP, MPP
rs2614257	6:135676404	C	T	3.95 x 10 <sup>-13</sup>	0.04	intronic	AHI1		CD34, CMP, MEP, MPP
rs4896143	6:135635100	G	C	5.95 x 10 <sup>-13</sup>	0.03	intronic	AHI1		CD8, LMPP, MEP
rs2614266	6:135716532	A	T	7.74 x 10 <sup>-13</sup>	0.02	intronic	AHI1		MPP
rs6935146	6:135627369	T	C	8.40 x 10 <sup>-13</sup>	0.02	intronic	AHI1		CMP
rs6914831	6:135639644	C	T	9.90 x 10 <sup>-13</sup>	0.02	intronic	AHI1		
rs6931735	6:135624811	G	A	1.13 x 10 <sup>-12</sup>	0.02	intronic	AHI1		
rs6570001	6:135651721	G	C	1.28 x 10 <sup>-12</sup>	0.01	intronic	AHI1		B
rs7759677	6:135909796	C	T	1.39 x 10 <sup>-12</sup>	0.01	intergenic	AHI1	PT1,PT2,PT3,PT	
rs761357	6:135902599	T	A	1.55 x 10 <sup>-12</sup>	0.01	intergenic	AHI1		
rs6908428	6:135793706	G	A	2.10 x 10 <sup>-12</sup>	0.01	intronic	AHI1		CMP
rs2179780	6:135650266	A	G	2.49 x 10 <sup>-12</sup>	0.01	intronic	AHI1		MEP
rs11154806	6:135873721	G	T	2.64 x 10 <sup>-12</sup>	0.01	intergenic	AHI1		
rs2246943	6:135691516	A	T	3.02 x 10 <sup>-12</sup>	0.01	intronic	AHI1		
rs7772681	6:135649013	T	C	2.91 x 10 <sup>-12</sup>	0.01	intronic	AHI1		
rs3827780	6:135709760	G	A	3.49 x 10 <sup>-12</sup>	0.01	intronic	AHI1		
rs2746432	6:135696597	C	T	3.49 x 10 <sup>-12</sup>	0.01	intronic	AHI1		
rs2327613	6:135662372	T	C	3.57 x 10 <sup>-12</sup>	.005	intronic	AHI1		
rs2614255	6:135663581	T	C	3.94 x 10 <sup>-12</sup>	.004	intronic	AHI1		
rs2746431	6:135687201	C	T	4.14 x 10 <sup>-12</sup>	.004	intronic	AHI1		
rs2246852	6:135691792	G	A	4.28 x 10 <sup>-12</sup>	.004	intronic	AHI1		
rs13197384	6:135818897	A	C	5.15 x 10 <sup>-12</sup>	.004	UTR5	AHI1	POD,PEC,MESFIB,ENDO,PT1,PT2,PT3,PT,LH,DCT,CNT,PC,ICA,ICB,LEUK	B, CD4, CD8, CD34, CLP, CMP, ERY, GMP, HSC, LMPP, MEP, MONO, MPP, NK
rs2614276	6:135681704	T	C	5.22 x 10 <sup>-12</sup>	.004	intronic	AHI1		CMP
rs12206850	6:135797808	C	T	5.76 x 10 <sup>-12</sup>	.003	intronic	AHI1		
rs9385726	6:135836962	T	C	6.49 x 10 <sup>-12</sup>	.003	intronic	LINC00271		
rs9647635	6:135841056	C	A	6.49 x 10 <sup>-12</sup>	.003	intergenic	LINC00271		
rs2256318*	6:31381519	A	G	9.71 x 10 <sup>-18</sup>	.270	intronic	MICA		
rs2256026*	6:31379141	G	C	1.28 x 10 <sup>-17</sup>	.206	intronic	MICA		
rs2256328*	6:31381637	G	C	1.71 x 10 <sup>-17</sup>	.155	intronic	MICA		
rs75918478	6:31453053	A	G	1.72 x 10 <sup>-17</sup>	.154	intergenic	MICB		
rs2857282*	6:31380807	A	T	2.87 x 10 <sup>-17</sup>	.093	intronic	MICA		
rs2853982*	6:31378751	G	A	5.64 x 10 <sup>-17</sup>	.048	intronic	MICA		
rs2256028*	6:31379198	A	C	6.33 x 10 <sup>-17</sup>	.043	intronic	MICA		
rs6478108	9:117558703	T	C	7.48 x 10 <sup>-11</sup>	0.25	intronic	TNFSF15		
rs7848647	9:117569046	C	T	8.34 x 10 <sup>-11</sup>	0.23	upstream	TNFSF15	PT1,PT2,PT3,PT,CNT,PC,ICB,LEUK	B, CD4, CMP, GMP, MPP

rs10817678	9:117579457	A	G	9.86 x 10 <sup>-11</sup>	0.19	intergenic	TNFSF15		
rs4263839	9:117566440	G	A	1.41 x 10 <sup>-10</sup>	0.14	intronic	TNFSF15		
rs6478109	9:117568766	G	A	1.87 x 10 <sup>-10</sup>	0.10	upstream	TNFSF15	PEC,ENDO,PT1,PT2,PT3,PT,LH, ,DCT,CNT,PC,ICA,ICB,LEUK	B, CD4, CD34, CMP, GMP, HSC, LMPP, MPP
rs4366152	9:117564875	C	T	2.21 x 10 <sup>-10</sup>	0.09	intronic	TNFSF15		

Excluding HLA until after conditional analysis; PIP = posterior inclusion probability, EA = effect allele, NEA = non-effect allele

**Kidney cell type codes:** POD = podocyte, PEC = parietal epithelial cells, MES-FIB = mesangial and fibroblasts, ENDO = endothelial, PT(1-3) = proximal tubule, PT-KIM1P = proximal tubule with KIM1+ expression, LH = loop of Henle, DCT = distal convoluted tubule, CNT = connecting tubule, PC = principal cells, ICA = Type A intercalated cells, ICB = Type B intercalated cells, LEUK = leukocytes

**Immune cell type codes:** B = CD19+CD20+ B. CD4T, CD8T = CD4+ and CD8+ T, CD34 = CD34+ bone marrow and cord blood, CLP = common lymphoid progenitor, CMP = common myeloid progenitor, Ery = CD71+GPA+ erythroblast, GMP = granulocyte macrophage progenitor, HSC = hematopoietic stem, LMPP = lymphoid-primed multipotent progenitor, MEP = megakaryocyte erythroid progenitor, Mono = CD14+ monocyte, MPP = multipotent progenitor, NK = CD56+ natural killer T

**Table S8. Samples used for HLA fine-mapping analysis.**

GWAS Cohort	Ancestry	n cases	n controls	n total
Nephrovir/EU	European	313	2,508	2,821
US Cohort	European	361	4,309	4,670
	European Total	674	6817	7491
US Cohort	African	65	7,335	7,400
Nephrovir/EU	African	44	179	223
	African Total	109	7514	7623
US Cohort	South Asian	31	338	369
Indian	South Asian	162	98	260
	South Asian Total	193	436	629
US Cohort	East Asian	16	439	455
Maghrebian	Maghrebian	55	228	283
Admixed American	Admixed American	98	13,248	13,346
Total		1,145	28,682	29,827

**Table S9. Genome-wide and suggestive loci from ancestry-specific HLA logistic regression and omnibus test.**

Ancestry <sup>a</sup>	Logistic regression <sup>b</sup>			Omnibus test	
	SNP	P-value	OR [95% CI]	Amino Acid ID <sup>c</sup>	P-value
European	rs28755181	3.49 x 10 <sup>-51</sup>	3.35 [2.86 – 3.92]	AA_DQA1_47_32609219	6.81 x 10 <sup>-61</sup>
African	rs1264705	3.03 x 10 <sup>-7</sup>	4.64 [2.58 – 8.34]	AA_DQB1_89_32632585	1.41 x 10 <sup>-8</sup>
South Asian	HLA_B*44:03	9.42 x 10 <sup>-12</sup>	2.83 [2.12 - 3.77]	AA_B_199_31323321	5.64 x 10 <sup>-10</sup>
Admixed-American	-	-	-	AA_DQA1_52_32609234	3.79 x 10 <sup>-11</sup>
Maghrebian	rs9273344	2.543 x 10 <sup>-6</sup>	0.18 [0.09, 0.37]	AA_DQB1_-6_32634305	4.03 x 10 <sup>-5</sup>

OR [95% CI] = Odds ratio and 95% confidence interval.

<sup>a</sup> No significant associations in the East Asian analysis.

<sup>b</sup> Test included SNPs and classical HLA alleles.

<sup>c</sup> Amino acid (AA) \_ gene \_ AA position \_ genomic position



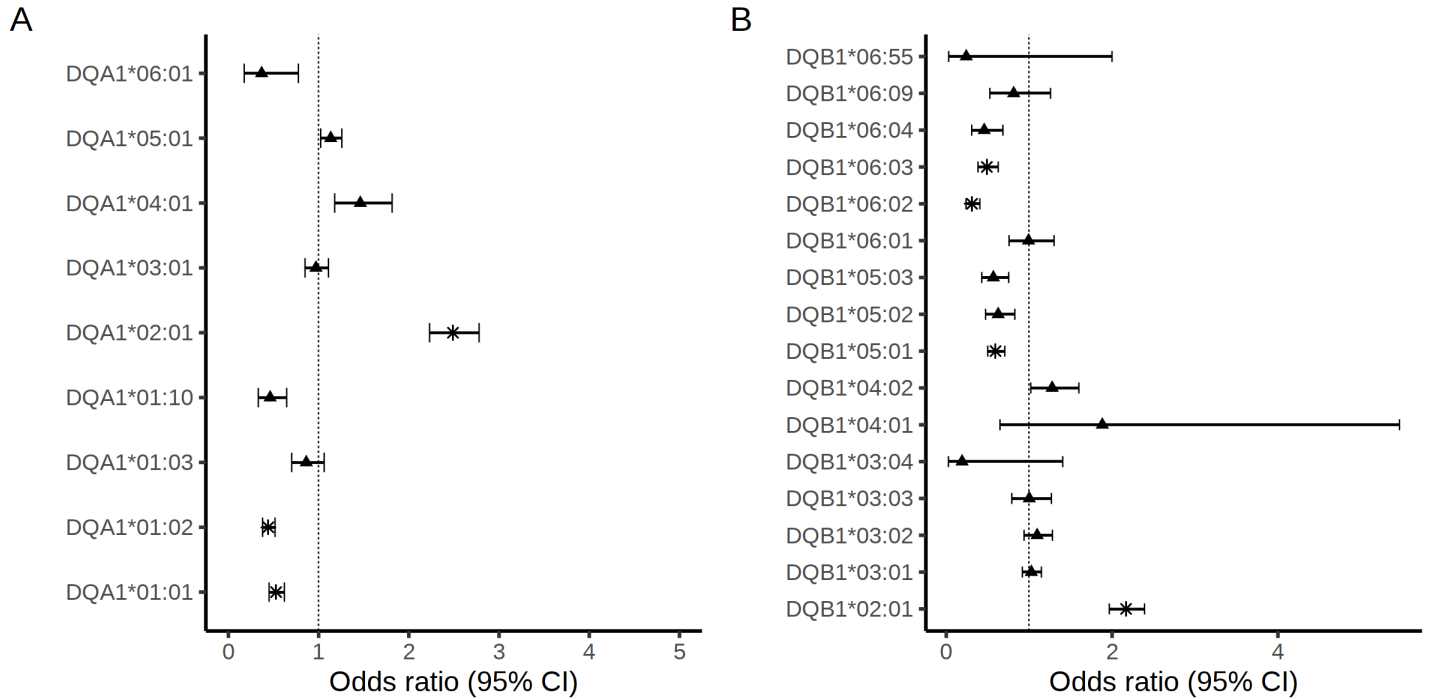
**Supplemental note 1:**

The strongest association was rs2856696, between *HLA-DRB1* and *HLA-DQA1* ( $P = 2.31 \times 10^{-68}$ ). The strongest classical HLA allele association was at *DQA1\*02* ( $P = 2.79 \times 10^{-59}$ ). Stepwise conditional analysis identified an independent association near *HLA-DQB1* (rs9273479;  $P = 9.97 \times 10^{-34}$ ).

**Table S10. Multi-population HLA.** Results from HLA logistic association test. Top overall association and top classical HLA allele both reported. Results after conditioning on rs2856696 also shown.

	SNP	EA	P-value	OR	Closest Gene
Logistic					
	rs2856696	T	$2.31 \times 10^{-68}$	2.80	<i>HLA-DRB1, HLA-DQA1</i>
	HLA_DQA1*02	T	$2.79 \times 10^{-59}$	2.49	<i>HLA-DQA1</i>
Conditional Logistic					
	rs9273479	T	$9.97 \times 10^{-34}$	0.49	<i>HLA-DQB1</i>
	HLA_DQA1*01	T	$3.92 \times 10^{-29}$	0.53	<i>HLA-DQA1</i>

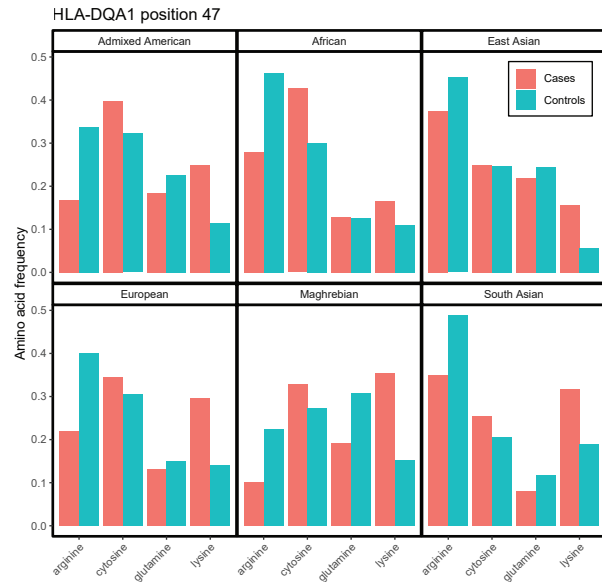
**Figure S8.** Logistic regression results for HLA-DQA1 (A) and HLA-DQB1 (B) 4-digit alleles in multi-population analysis. Associations reaching genome-wide significance are indicated with a \*



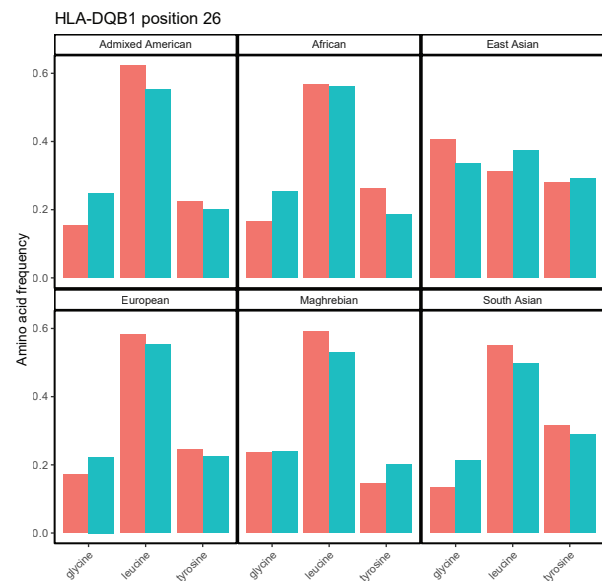
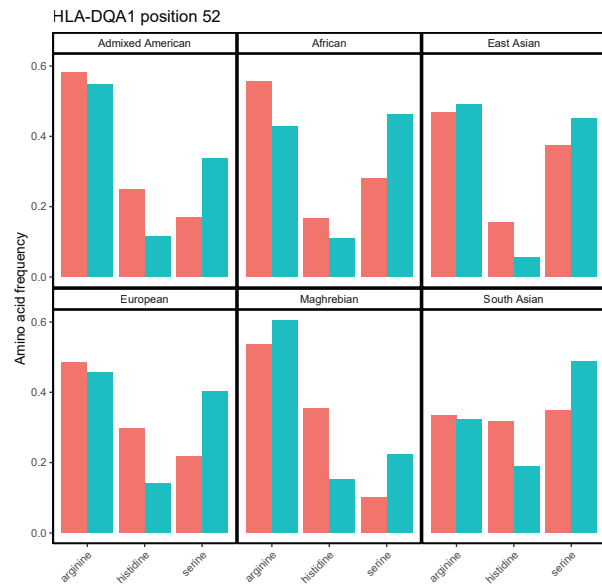
**Table S11. HLA amino acid omnibus test results.** Omnibus p-value is from an ANOVA comparing logistic models with and without amino acid position. Amino acid associations from logistic regression including all amino acid residues at the given position.

HLA gene & Position	Omnibus P-value	Amino acid	OR [95% CI]	P-value
DQA1_47	7.73 x 10 <sup>-83</sup>	cysteine	1.97 [1.75, 2.23]	5.47 x 10 <sup>-28</sup>
		lysine	3.62 [3.17, 4.14]	5.70 x 10 <sup>-80</sup>
		glutamine	1.72 [1.47, 2.00]	7.63 x 10 <sup>-12</sup>
		arginine	ref	
DQA1_52	1.14 x 10 <sup>-82</sup>	serine	0.53 [0.47, 0.59]	1.00 x 10 <sup>-28</sup>
		histidine	1.92 [1.70, 2.16]	2.55 x 10 <sup>-27</sup>
		arginine	REF	
DQB1_26*	3.22 x 10 <sup>-13</sup>	tyrosine	0.90 [0.81, 1.00]	0.06
		glycine	0.64 [0.60, 0.73]	4.75 x 10 <sup>-12</sup>
		leucine	ref	

\* Top association after conditioning on DQA1\_47 and DQA1\_52



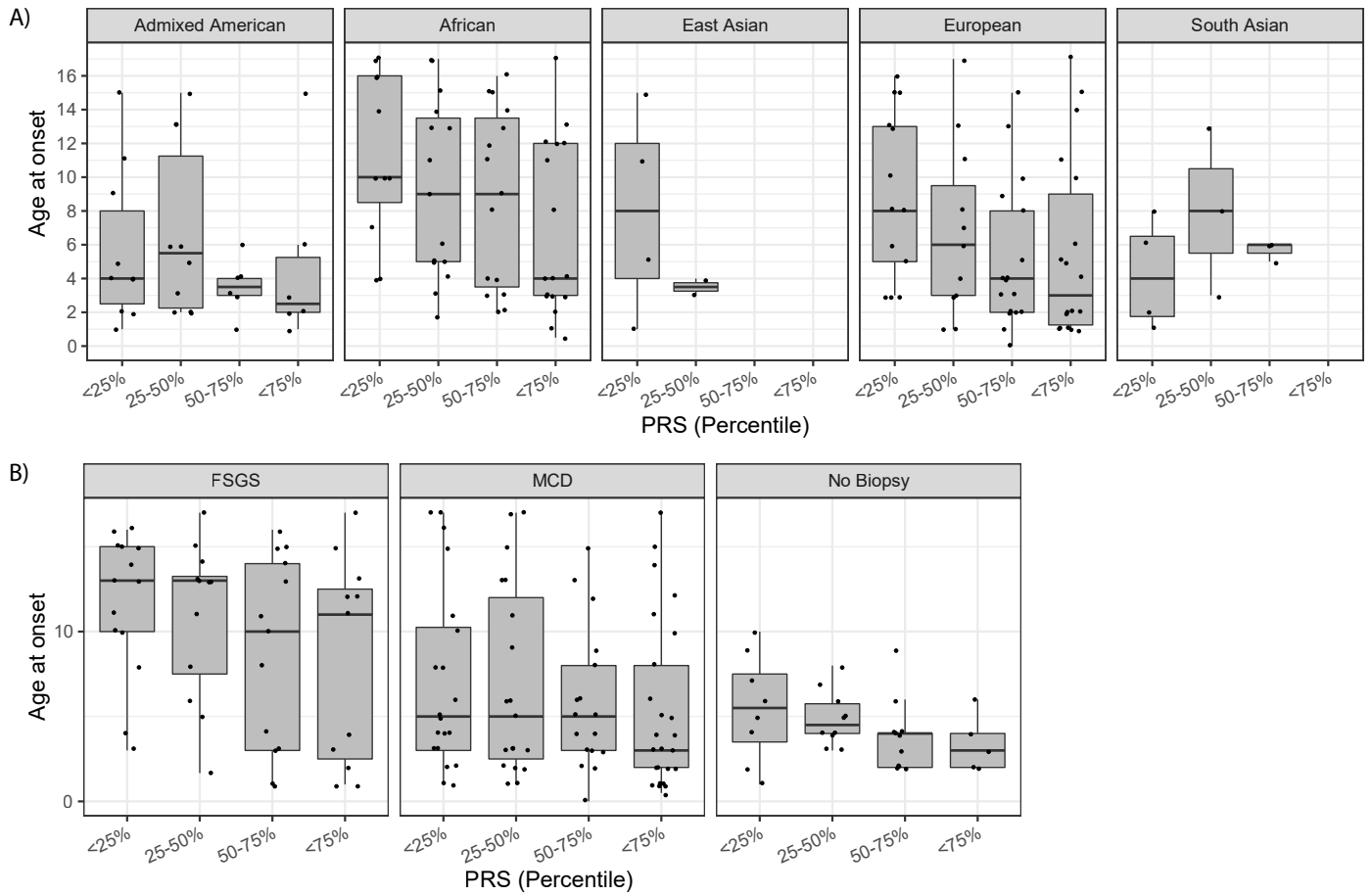
**Figure S9. Case/control frequency of amino acid residues at positions 47 and 52 of HLA-DQA1 and 26 of HLA-DQB1.**



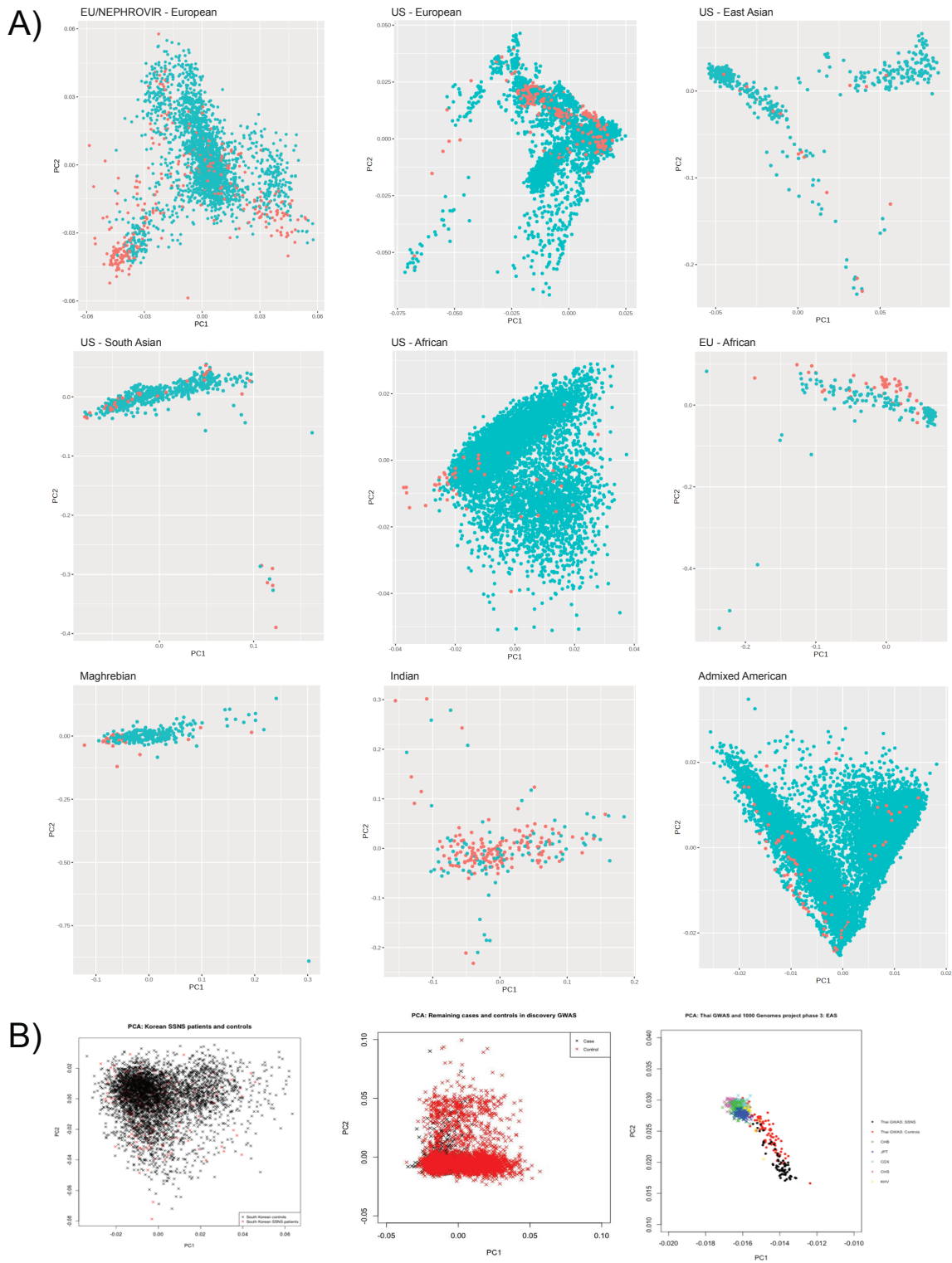
**Table S12.** Results of Polygenic Risk Score (PRS) analysis in European and NEPTUNE cohorts.

	Count (%) or Median (IQR)	PRS (IQR)	Univariate P-value <sup>c</sup>	Multiple linear regression P-value <sup>d</sup>
<b>European <sup>a</sup></b>	n=233 <sup>e</sup>	1.79 [0.97-2.35]	-	-
Sex			0.07	-
Male	146 (63%)	1.89 [0.98-2.43]		
Female	87 (37%)	1.51 [0.90-2.14]		
Steroid sensitivity			0.17	-
SDNS	106 (45%)	1.84 [1.13-2.44]		
SSNS	127 (55%)	1.70 [0.91-2.19]		
Age onset	4.40 (3.09-7.20)		4.13 x 10 <sup>-4</sup>	1.49 x 10 <sup>-4</sup>
<b>NEPTUNE</b>	N=165	0.82 [0.50-1.09]	-	-
Sex			0.35	-
Male	97 (59%)	0.82 [0.43-1.08]		
Female	68 (41%)	0.82 [0.61-1.10]		
Histology			0.37	-
FSGS	50 (30%)	0.80 [0.48-1.03]		
MCD	81 (49%)	0.83 [0.50-1.12]		
Non-biopsy	34 (21%)	0.81 [0.61-0.95]		
Age of onset	5.00 (3.00-11.00)		0.02	0.003
Ancestry <sup>b</sup>			0.02	-
African	58 (35%)	0.86 [0.64-1.09]		
Admixed American	32 (19%)	0.75 [0.47-0.90]		
East Asian	6 (4%)	0.44 [0.08-0.60]		
EUR	59 (36%)	0.86 [0.66-1.15]		
SAS	10 (6%)	0.55 [0.44-0.88]		

<sup>a</sup> European cohort from Paris<sup>b</sup> Predicted ancestry based on genotype data and 1000 genomes reference panel<sup>c</sup> Wilcoxon test for binary traits, Kruskal-Wallis for categorical traits, univariate linear regression for continuous traits<sup>d</sup> European (Paris cohort) adjusted for sex, steroid sensitivity and 4 genetic principal components. NEPTUNE adjusted for sex, histology and 4 genetic principal components<sup>e</sup> 233 out of a total 311 samples had available demographic information



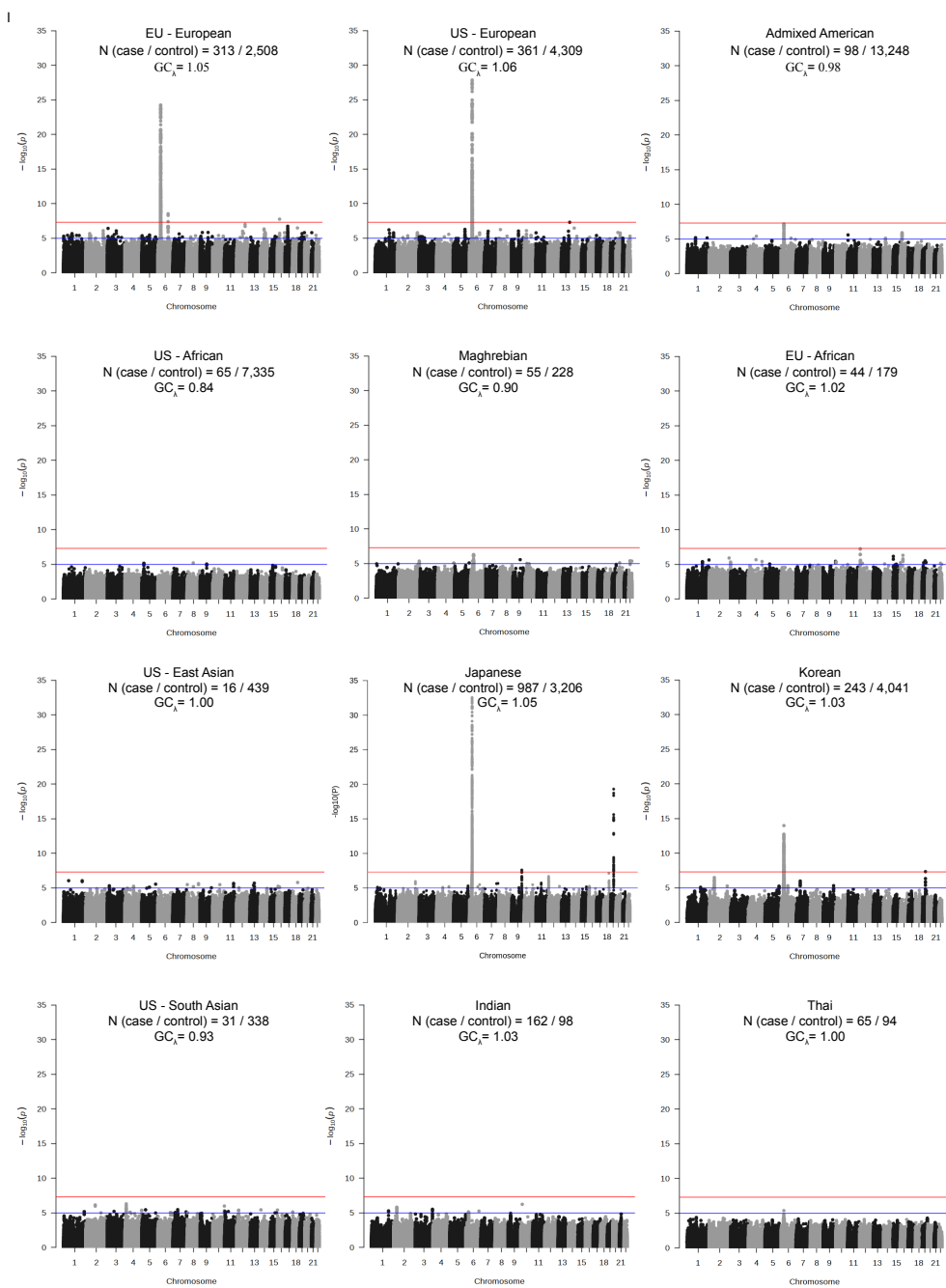
**Figure S10. Association between PRS quartiles and age of onset in the NEPTUNE cohort. A) Stratified by genotype-predicted ancestry. B) By histology.**



**Figure S11. PCA (PC1 vs. PC2) of dataset GWAS cases and controls.**

**A)** Data for which genotype-level data were available. Cases are indicated in red; controls are indicated in blue.

**B)** Data with only summary statistics were available.



**Figure S12. Manhattan plot of GWAS by cohort.**

Red line indicated genome-wide significance threshold ( $5 \times 10^{-8}$ ); blue line is suggestive significance ( $1 \times 10^{-5}$ ). Number of cases and controls and genomic controls lambda are reported for each dataset.

**Table S13: Genome-wide significant loci from individual GWAS**

All SNP are > 1Mb from each other with  $r^2 < 0.1$ . We found no genome-wide significant associations in the Thai, EU – African, Maghrebian, Indian, Admixed American, US – East Asian and US – South Asian datasets.

Dataset	Top SNP	Position (hg19)	Nearest Gene	EA	NEA	OR [95% CI]	P
EU - European	rs9275205	6:32657560	<i>HLA-DQB1</i>	C	T	3.13 [2.52, 3.88]	$5.69 \times 10^{-25}$
EU - European	rs2637681	6:116769845	<i>DSE</i>	G	T	0.54 [0.44, 0.66]	$3.01 \times 10^{-9}$
EU - European	rs17185137	16:26809795	<i>C16orf82</i>	G	A	3.03 [2.06, 4.46]	$1.78 \times 10^{-8}$
US - European	rs1694129	6:32637743	<i>HLA-DQB1</i>	T	G	3.20 [2.61, 3.93]	$1.38 \times 10^{-28}$
Japanese	rs6901541	32442261	<i>HLA-DRA</i>	C	T	2.49 [2.15, 2.89]	$2.81 \times 10^{-33}$
Japanese	rs56117924	36334182	<i>NPHS1</i>	A	G	1.90 [1.66, 2.18]	$4.95 \times 10^{-20}$
Japanese	rs117576077	31906997	<i>C2</i>	T	C	0.13 [0.07, 0.23]	$1.85 \times 10^{-11}$
Japanese	rs3117032	33088592	<i>HLA-DPB2</i>	T	C	0.40 [0.30, 0.53]	$1.88 \times 10^{-10}$
Japanese	rs3095273	29566369	<i>GABBR1</i>	A	G	0.44 [0.34, 0.58]	$6.45 \times 10^{-9}$
Japanese	rs6478109	117568766	<i>TNFSF15</i>	A	G	0.72 [0.64, 0.81]	$2.55 \times 10^{-8}$
Korean	rs9272518	32606446	<i>HLA-DQA1</i>	C	G	2.63 [2.06, 3.35]	$1.05 \times 10^{-14}$
Korean	rs412175	36342103	<i>NPHS1</i>	C	T	1.83 [1.47, 2.27]	$4.66 \times 10^{-8}$



## The Research Consortium on Genetics of Childhood Idiopathic Nephrotic Syndrome in Japan

Yoshinori Araki<sup>1</sup>, Yoshinobu Nagaoka<sup>1</sup>, Takayuki Okamoto<sup>2</sup>, Yasuyuki Sato<sup>2</sup>, Asako Hayashi<sup>2</sup>, Toshiyuki Takahashi<sup>2</sup>, Hayato Aoyagi<sup>3</sup>, Michihiko Ueno<sup>4</sup>, Masanori Nakanishi<sup>5</sup>, Nariaki Toita<sup>6</sup>, Kimiaki Uetake<sup>7</sup>, Norio Kobayashi<sup>8</sup>, Shoji Fujita<sup>9</sup>, Kazushi Tsuruga<sup>10</sup>, Naonori Kumagai<sup>11, 12</sup>, Hiroki Kudo<sup>11</sup>, Eriko Tanaka<sup>13, 14</sup>, Tae Omori<sup>15</sup>, Mari Okada<sup>16</sup>, Yoshiho Hatai<sup>17</sup>, Tomohiro Udagawa<sup>18, 19</sup>, Yaeko Motoyoshi<sup>20</sup>, Koichi Kamei<sup>21</sup>, Masao Ogura<sup>21</sup>, Mai Sato<sup>21</sup>, Yuji Kano<sup>21, 22</sup>, Motoshi Hattori<sup>23</sup>, Kenichiro Miura<sup>23</sup>, Yutaka Harita<sup>24</sup>, Shoichiro Kanda<sup>24</sup>, Emi Sawanobori<sup>25</sup>, Anna Kobayashi<sup>25</sup>, Manabu Kojika<sup>26</sup>, Yoko Ohwada<sup>27, 28</sup>, Kunimasa Yan<sup>29</sup>, Hiroshi Hataya<sup>30</sup>, Riku Hamada, Chikako Terano<sup>30</sup>, Ryoko Harada<sup>30</sup>, Yuko Hamasaki<sup>31</sup>, Junya Hashimoto<sup>31</sup>, Kenji Ishikura<sup>32</sup>, Shuichi Ito<sup>33</sup>, Hiroyuki Machida<sup>33</sup>, Aya Inaba<sup>33</sup>, Takeshi Matsuyama<sup>34</sup>, Miwa Goto<sup>35</sup>, Masaki Shimizu<sup>36</sup>, Kazuhide Ohta<sup>37</sup>, Yohei Ikezumi<sup>38, 39</sup>, Takeshi Yamada<sup>38</sup>, Toshiaki Suzuki<sup>40</sup>, Soichi Tamamura<sup>41</sup>, Yukiko Mori<sup>41</sup>, Yoshihiko Hidaka<sup>42</sup>, Daisuke Matsuoka<sup>42</sup>, Tatsuya Kinoshita<sup>43</sup>, Shunsuke Noda<sup>44</sup>, Masashi Kitahara<sup>45</sup>, Naoya Fujita<sup>46</sup>, Satoshi Hibino<sup>46</sup>, Kandai Nozu<sup>47</sup>, Tomoko Horinouchi<sup>47</sup>, Tomohiko Yamamura<sup>47</sup>, China Nagano<sup>47</sup>, Shogo Minamikawa<sup>47, 48</sup>, Keita Nakanishi<sup>47, 49</sup>, Junya Fujimura<sup>47, 50</sup>, Nana Sakakibara<sup>47</sup>, Yuya Aoto<sup>47</sup>, Shinya Ishiko<sup>47</sup>, Kazumoto Iijima<sup>51, 52</sup>, Ryojiro Tanaka<sup>51</sup>, Hiroshi Kaito<sup>51</sup>, Kyoko Kanda<sup>51, 53</sup>, Yosuke Inaguma<sup>51</sup>, Yuya Hashimura<sup>54</sup>, Shingo Ishimori<sup>55, 56</sup>, Naohiro Kamiyoshi<sup>57</sup>, Takayuki Shibano<sup>58</sup>, Yasuhiro Takeshima<sup>58</sup>, Rika Fujimaru<sup>59</sup>, Hiroaki Ueda<sup>59</sup>, Akira Ashida<sup>60</sup>, Hideki Matsumura<sup>60</sup>, Takuo Kubota<sup>61</sup>, Taichi Kitaoka<sup>61, 62</sup>, Yusuke Okuda<sup>63, 64</sup>, Toshihiro Sawai<sup>63</sup>, Tomoyuki Sakai<sup>63</sup>, Yuko Shima<sup>65</sup>, Taketsugu Hama<sup>65</sup>, Mikiya Fujieda<sup>66</sup>, Masayuki Ishihara<sup>66</sup>, Shigeru Itoh<sup>67</sup>, Takuma Iwaki<sup>68</sup>, Maki Shimizu<sup>69</sup>, Koji Nagatani<sup>70</sup>, Shoji Kagami<sup>71</sup>, Maki Urushihara<sup>71</sup>, Yoshitsugu Kaku<sup>72</sup>, Manao Nishimura<sup>72</sup>, Miwa Yoshino<sup>72</sup>, Ken Hatae<sup>73</sup>, Maiko Hinokiyama<sup>73</sup>, Rie Kuroki<sup>73</sup>, Yasufumi Ohtsuka<sup>74</sup>, Masafumi Oka<sup>74</sup>, Shinji Nishimura<sup>75</sup>, Tadashi Sato<sup>76</sup>, Seiji Tanaka<sup>77</sup>, Ayuko Zaitu<sup>77</sup>, Hitoshi Nakazato<sup>78</sup>, Hiroshi Tamura<sup>78</sup>, Koichi Nakanishi<sup>79</sup>

1. Department of Pediatrics, National Hospital Organization Hokkaido Medical Center, Sapporo, Japan
2. Department of Pediatrics, Hokkaido University Hospital, Sapporo, Japan
3. Department of Pediatrics, Obihiro Kyokai Hospital, Obihiro, Japan
4. Department of Pediatrics, Nikko Memorial Hospital, Muroran, Japan
5. Department of Pediatrics, Kushiro Red Cross Hospital, Kushiro, Japan
6. Department of Pediatrics, Sapporo Kosei Hospital, Sapporo, Japan
7. Department of Pediatrics, Obihiro Kosei Hospital, Obihiro, Japan
8. Department of Pediatrics, Oji General Hospital, Tomakomai, Japan
9. Department of Pediatrics, Hakodate Goryoukaku Hospital, Hakodate, Japan
10. Department of Pediatrics, Hirosaki University Hospital, Hirosaki, Japan
11. Department of Pediatrics, Tohoku University Graduate School of Medicine, Sendai, Japan
12. Present address: Department of Pediatrics, Fujita Health University, Toyoake, Japan
13. Department of Pediatrics and Developmental biology, Tokyo Medical and Dental University, Tokyo, Japan
14. Present address: Department of Pediatrics, Kyorin University Hospital, Tokyo, Japan
15. Department of Pediatrics, Tokyo Metropolitan Bokutoh Hospital, Tokyo, Japan
16. Musashino Red Cross Hospital, Musashino, Japan
17. Tokyo Bay Urayasu-Ichikawa Medical Center, Urayasu, Japan
18. Tsuchiura Kyodo General Hospital, Tsuchiura, Japan
19. Present address: Department of Pediatrics and Developmental biology, Tokyo Medical and Dental University, Tokyo, Japan
20. Department of Pediatrics, Tokyo Kita Medical Center, Tokyo, Japan
21. Division of Nephrology and Rheumatology, National Center for Child Health and Development, Tokyo, Japan
22. Present address: Department of Pediatrics, Dokkyo Medical University School of Medicine, Mibu, Japan
23. Department of Pediatric Nephrology, Tokyo Women's Medical University, Tokyo, Japan

24. Department of Pediatrics, The University of Tokyo Hospital, Tokyo, Japan
25. Department of Pediatrics, Faculty of Medicine, University of Yamanashi, Chuo, Japan
26. Department of Pediatrics, Fujiyoshida Municipal Hospital, Fujiyoshida, Japan
27. Department of Pediatrics, Dokkyo Medical University School of Medicine, Mibu, Japan
28. Department of Pediatrics, Tohigi Medical Center Shimostuga, Tohigi, Japan
29. Department of Pediatrics, Kyorin University Hospital, Tokyo, Japan
30. Department of Nephrology, Tokyo Metropolitan Children's Medical Center, Tokyo, Japan
31. Department of Nephrology, Toho University Faculty of Medicine, Tokyo, Japan
32. Department of Pediatrics, Kitasato University School of Medicine, Sagamihara, Japan
33. Department of Pediatrics, Yokohama City University, Yokohama, Japan
34. Department of Pediatrics, Fussa Hospital, Tokyo, Japan
35. Department of Pediatrics, National Hospital Organization Kofu National Hospital, Kofu, Japan
36. Department of Pediatrics, Kanazawa University Hospital, Kanazawa, Japan
37. Department of Pediatrics, Kanazawa Medical Center, Kanazawa, Japan
38. Department of Pediatrics, Niigata University Medical & Dental Hospital, Niigata, Japan
39. Present address: Department of Pediatrics, Fujita Health University, Toyoake, Japan
40. Department of Pediatrics, National Hospital Organization Niigata National Hospital, Niigata
41. Department of Pediatrics, Japanese Red Cross Fukui Hospital, Fukui, Japan
42. Department of Pediatrics, Shinshu University Hospital, Matsumoto, Japan
43. Department of Pediatrics, Ina Central Hospital, Ina, Japan
44. Department of Pediatrics, Nagano Red Cross Hospital, Nagano, Japan
45. Department of Pediatrics, Matsumoto Medical Center, Matsumoto, Japan
46. Department of Pediatric Nephrology, Aichi Children's Health And Medical Center, Obu, Japan
47. Department of Pediatrics, Kobe University Graduate School of Medicine, Kobe, Japan
48. Present address: Department of General Medicine, Hyogo Prefectural Kobe Children's Hospital, Kobe, Japan
49. Present address: Department of Pediatrics, Saiseikai Hyogoken Hospital, Kobe, Japan
50. Present address: Department of Pediatrics, Kakogawa Central City Hospital, Kakogawa, Japan
51. Department of Nephrology, Hyogo Prefectural Kobe Children's Hospital, Kobe, Japan
52. Department of Advanced Pediatric Medicine, Kobe University Graduate School of Medicine, Kobe, Japan
53. Department of Pediatrics, National Hospital Organization Kobe Medical Center
54. Department of Pediatrics, Takatsuki General Hospital, Takatsuki, Japan
55. Department of Pediatrics, Kakogawa Central City Hospital, Kakogawa, Japan
56. Present address: Department of Pediatrics, Takatsuki General Hospital, Takatsuki, Japan
57. Department of Pediatrics, Himeji Red Cross Hospital, Himeji, Japan
58. Department of Pediatrics, Hyogo College of Medicine, Nishinomiya, Japan
59. Department of Pediatrics, Osaka City General Hospital, Osaka, Japan
60. Department of Pediatrics, Osaka Medical College, Takatsuki, Japan
61. Department of Pediatrics, Osaka University Graduate School of Medicine, Suita, Japan
62. Present address: Department of Pediatrics, Yodogawa Children Hospital, Osaka, Japan
63. Department of Pediatrics, Shiga University of Medical Science, Otsu, Japan
64. Present address: Department of Pediatrics, Kitasato University School of Medicine, Sagamihara, Japan
65. Department of Pediatrics, Wakayama Medical University, Wakayama, Japan
66. Department of Pediatrics, Kochi Medical School, Kochi University, Nankoku, Japan
67. Department of Pediatrics, Kagawa Prefecture Central Hospital, Takamatsu, Japan
68. Department of Pediatrics, Faculty of Medicine, Kagawa University, Kagawa, Japan
69. Department of Pediatrics, Faculty of Medicine, Kagawa University, Kagawa, Japan
70. Department of Pediatrics, Uwajima City Hospital, Uwajima, Japan
71. Department of Pediatrics, Institute of Biomedical Sciences, Tokushima University Graduate School, Tokushima, Japan
72. Department of Nephrology, Fukuoka Children's Hospital, Fukuoka, Japan
73. Department of Pediatrics, Japanese Red Cross Fukuoka Hospital, Fukuoka, Japan
74. Department of Pediatrics, Faculty of Medicine, Saga University, Saga, Japan

75. Department of Pediatrics, Saga-ken Medical Centre Koseikan, Saga, Japan
76. Department of Pediatrics, National Hospital Organization Ureshino Medical Center, Ureshino, Japan
77. Department of Pediatrics and Child Health, Kurume University School of Medicine, Kurume, Japan
78. Department of Pediatrics, Faculty of Life Sciences, Kumamoto University, Kumamoto, Japan
79. Department of Child Health and Welfare (Pediatrics), Graduate School of Medicine, University of the Ryukyus, Nishihara, Japan

### **Korean Consortium of Hereditary Renal Diseases in Children**

Min Hyun Cho<sup>1</sup>, Tae-Sun Ha<sup>2</sup>, Hee Gyung Kang<sup>3</sup>, Il-Soo Ha<sup>3</sup>, Ji Hyun Kim<sup>3</sup>, Peong Gang Park<sup>3</sup>, Kyoung Hee Han<sup>4</sup>, Eun Mi Yang<sup>5</sup>, Myung Hyun Cho<sup>6</sup>, Hae Il Cheong<sup>6</sup>

1. Department of Pediatrics, Kyungpook National University, School of Medicine, Daegu, Korea
2. Department of Pediatrics, Chungbuk National University College of Medicine, Cheongju, Korea
3. Department of Pediatrics, Seoul National University Children's Hospital, Seoul, Korea
4. Department of Pediatrics, Jeju National University School of Medicine, Jeju, Korea
5. Department of Pediatrics, Chonnam National University Children's Hospital, Gwangju, Korea
6. Department of Pediatrics, Hallym University Sacred Heart Hospital, Anyang, Korea

### **Thailand Team**

Prayong Vachvanichsanong<sup>1</sup>, Kwanchai Pirojsakul<sup>2</sup>

1. Department of Pediatrics, Faculty of Medicine, Prince of Songkla University, Hat-Yai, Songkhla, Thailand
2. Department of Pediatrics, Faculty of Medicine, Ramathibodi Hospital Mahidol University, Bangkok, Thailand

### **ACKNOWLEDGMENTS:**

The authors wish to thank Seong Kyu Han, PhD (Boston Children's Hospital and Harvard Medical School) for his assistance in creating Figure 1.

- The Nephrotic Syndrome Study Network (NEPTUNE) is part of the Rare Diseases Clinical Research Network (RDCRN), which is funded by the National Institutes of Health (NIH) and led by the National Center for Advancing Translational Sciences (NCATS) through its Division of Rare Diseases Research Innovation (DRDRI). NEPTUNE is funded under grant number U54DK083912 as a collaboration between NCATS and the National Institute of Diabetes and Digestive and Kidney Diseases (NIDDK). Additional funding and/or programmatic support is provided by the University of Michigan, NephCure Kidney International and the Halpin Foundation. RDCRN consortia are supported by the RDCRN Data Management and Coordinating Center (DMCC), funded by NCATS and the National Institute of Neurological Disorders and Stroke (NINDS) under U2CTR002818.
- This study was funded by European Research Council grant ERC-2012- ADG\_20120314 (grant agreement 322947) and Agence Nationale pour la Recherche "Genetransnephrose" grant ANR-16-CE17-004-01.
- MGS is supported by NIH grants R01DK119380, RC2DK122397, 2U54DK083912 and a gift from The Pura Vida Kidney Foundation