

Table of Contents

Supplementary Materials	1
Additional Methods	2
Danish Registries	2
Outcomes	2
Model Description	2
Validation and Evaluation	3
Additional Figures and Tables	6
ST1: Features overview.	6
ST2: Additional metrics for the validation.	7
ST3: Model comparison.	8
ST4: Kaplan Meier curve comparison of top risk quantiles between our predictions and age-sex alone.	9
ST5: Performance comparison to QCancer	10
ST6: Screening evaluation	11
ST7: Baseline risk comparison to Age-sex model on the UK Biobank	13
ST8: Proportional hazards assumption for the overall predictor.	14
SF1: Age-sex adjusted concordance for the development data.	15
SFC-X: Summary plots	15
SFC1: Oesophagus	16
SFC2: Stomach	17
SFC3: Colorectal	18
SFC4: Liver	19
SFC5: Pancreas	20
SFC6: Lung	21
SFC7: Melanoma	22
SFC8: Breast	23
SFC9: Cervix Uteri	24
SFC10: Corpus Uteri	25
SFC11: Ovary	26
SFC12: Prostate	27
SFC13: Testis	28
SFC14: Kidney	29
SFC15: Bladder	30
SFC16: Brain	31
SFC17: Thyroid	32
SFC18: Non-hodgkin lymphoma	33
SFC19: Multiple Myeloma	34
SFC20: AML	35

Supplementary Materials

Additional Methods

Danish Registries

All registers are linkable through a unique personal identification number provided in the Central Person Registry (CPR). We use the Danish National Patients Registry (DNPR) ⁶⁵, a nationwide longitudinal register with data on hospital admissions (secondary care) across all of Denmark since 1977, to extract information on individual diagnoses.

The Danish Register of Causes of Death (DR) ⁶⁶, covering all citizens dying in Denmark since 1970, and the Danish Cancer Register (CR) ⁶⁷, collating cancer incidence across the Danish population from 1978 onwards, are used to supplement the information in the DNPR. Additionally, we have been using the BigTempHealth project to extract information about basic health factors through doctor notes from hospitals in Region Zealand and the Capital Region since September, 2004.

Outcomes

As mentioned in the main text, we focus on 20 major organ sites along with the groupings in NORDCAN ⁵⁶ including: Oesophagus (C15), Stomach (C16), Colorectal (C18-21), Liver (C22), Pancreas (C25), Lung (C33-34), Melanoma (C43), Kidney (C64), Bladder (C67), Brain (C71), Thyroid (C73), Non-Hodgkin Lymphoma (C82-86), Multiple Myeloma (C90), AML (C*- 920, 924, 925, 926, 928, 930, 940, 942) for both sexes. Female-only cancers include: Breast (C50), Cervix Uteri (C53), Corpus Uteri (C54), and Ovary (C56). Male-only cancers include: Prostate (C61), Testis (C62).

Cancers are identified by an entry in either the DNPR (primary + secondary diagnosis), CR, or DR. If multiple cancers are reported within a 3-month time window, all the corresponding cancers in the time window are considered equally valid as the primary.

For cancers reported in the CR, we check the morphological codes for benign, in situ, and metastatic cancers which are considered invalid.

The 20 major organ sites are preferentially treated to the bag-of-cancer and death outcome. If multiple cancers are considered, the earliest date is used for both.

Model Description

As mentioned we make use of the method developed in ⁶⁰. However, as there are 20 different cancer types of interest + 2 additional composite outcomes, we expand the approach to account for competing risks.

We fit 22 cause-specific Cox models on the development-train set of the Danish registries, censoring individuals when they transition to a competing state. The validate set is used to gauge some of the hyperparameters and for initial model evaluation and sensitivity assessment. The test set has not been part of any model derivation and is solely used for final model evaluations.

The cause specific hazard function $\alpha_k(t) = \lim_{\Delta t \rightarrow 0} (\Delta t)^{-1} \mathcal{P}(T \leq t + \Delta t \mid T > t)$

for an event k can be written under the cox model as $\alpha_k(t) = \alpha_{0k}(t) \exp\left[\sum_{k=1}^{22} \theta_k \mathbf{X}(t)\right]$, where θ_k are the model parameters and $\mathbf{X}(t)$ are the time-varying covariates. The cause-specific cumulative hazard follows as $A_k(t) = \int_0^t \alpha_k(u) \text{d}u$ and is estimated via Breslow's estimator⁶¹. The overall survival function from any of the possible competing causes follows as $S(t) = \exp\left[-\sum_{k=1}^{22} A_k(t)\right]$. We can then define the cumulative incidence function (CIF) as $F_k(t) = \int_0^t \alpha_k(u) S(u) \text{d}u$, incorporating the cause-specific hazards for each of the 22 event types⁶⁸. The CIF forms the basis for most of your predictions. It should be noted that survival probabilities with internal time-varying covariates are ill-defined; we do assume here for simplicity that covariates stay constant over the prediction horizon.

For the final model specification, we used a StudentT(loc=0, scale=0.01) distribution with 1.5 degrees of freedom as prior and a lower rank(50) Multivariate-Normal distribution as the distributional family for stochastic variational inference. Overall, we use a batch size of 720 randomly selected individuals with a 1/20 ratio between events and non-events for each stochastic gradient descent update.

Validation and Evaluation

In total, we compared 6 different settings per cancer. The full model prediction is compared to an age-sex model based on the estimates from Denmark. A similar evaluation but now with an age-sex model (age up to a quadratic term and interactions) fitted on the UK Biobank data itself. We assessed the compatibility of the age-sex models and generally, the models perform similarly based on the ROC-AUC. Additionally, we evaluated Spearman's rank correlation between the two scores and almost all show a $\rho > 0.9$ except for Breast (0.62), Thyroid (0.74), and Melanoma (0.84) (supplementary table 7).

Testis and Cervix Uteri show a reversed correlation indicating a particular discordance between the underlying incidence curves.

Additionally, we evaluated the model improvements for incorporating the family history data and/or the health data (disease + basic health) individually. The combined predictor is assessed for the proportional hazards assumption (supplementary table 8).

Further, we stratify individuals based on their predicted risk of the top 1% quantile and assess the corresponding Kaplan-Meier (KM) curve. The KM curve is then compared to a corresponding age-sex-based stratification. We use the additionally fitted age-sex model for the UK Biobank. Differences between the KM curves are assessed through a simple Cox regression (Hazard Ratio) and Log-Rank tests (supplementary table 4, supplementary figure C1-20e). Calibration of our predictions is assessed for each decedentile of the risk score.



TRIPOD Checklist: Prediction Model Development

Section/Topic	Item	Checklist Item	Page
Title and abstract			
Title	1	Identify the study as developing and/or validating a multivariable prediction model, the target population, and the outcome to be predicted.	p.1
Abstract	2	Provide a summary of objectives, study design, setting, participants, sample size, predictors, outcome, statistical analysis, results, and conclusions.	p. 2
Introduction			
Background and objectives	3a	Explain the medical context (including whether diagnostic or prognostic) and rationale for developing or validating the multivariable prediction model, including references to existing models.	p. 3-4
	3b	Specify the objectives, including whether the study describes the development or validation of the model or both.	p. 3
Methods			
Source of data	4a	Describe the study design or source of data (e.g., randomized trial, cohort, or registry data), separately for the development and validation data sets, if applicable.	p.4-5 24
	4b	Specify the key study dates, including start of accrual; end of accrual; and, if applicable, end of follow-up.	p. 4 fig. 1b
Participants	5a	Specify key elements of the study setting (e.g., primary care, secondary care, general population) including number and location of centres.	p.4-5 24
	5b	Describe eligibility criteria for participants.	p. 5 fig. 1b
	5c	Give details of treatments received, if relevant.	-
Outcome	6a	Clearly define the outcome that is predicted by the prediction model, including how and when assessed.	p.6 p. 24
	6b	Report any actions to blind assessment of the outcome to be predicted.	p. 6
Predictors	7a	Clearly define all predictors used in developing or validating the multivariable prediction model, including how and when they were measured.	p.5-6 s. tab. 1
	7b	Report any actions to blind assessment of predictors for the outcome and other predictors.	p. 6
Sample size	8	Explain how the study size was arrived at.	p.5 fig. 1b
Missing data	9	Describe how missing data were handled (e.g., complete-case analysis, single imputation, multiple imputation) with details of any imputation method.	p.5-6 s. tab. 1
Statistical analysis methods	10a	Describe how predictors were handled in the analyses.	p.5-6 p. 25 s. tab. 1
	10b	Specify type of model, all model-building procedures (including any predictor selection), and method for internal validation.	p.5-7 p. 25
	10d	Specify all measures used to assess model performance and, if relevant, to compare multiple models.	p.6-7 p.25
Risk groups	11	Provide details on how risk groups were created, if done.	p.6-7 p.25
Results			
Participants	13a	Describe the flow of participants through the study, including the number of participants with and without the outcome and, if applicable, a summary of the follow-up time. A diagram may be helpful.	p. 5 fig. 1b
	13b	Describe the characteristics of the participants (basic demographics, clinical features, available predictors), including the number of participants with missing data for predictors and outcome.	tab. 1
Model development	14a	Specify the number of participants and outcome events in each analysis.	tab. 1
	14b	If done, report the unadjusted association between each candidate predictor and outcome.	online m.

Model specification	15a	Present the full prediction model to allow predictions for individuals (i.e., all regression coefficients, and model intercept or baseline survival at a given time point).	online m.
	15b	Explain how to use the prediction model.	online m.
Model performance	16	Report performance measures (with CIs) for the prediction model.	p.7-10 fig 1
Discussion			
Limitations	18	Discuss any limitations of the study (such as nonrepresentative sample, few events per predictor, missing data).	p. 10-11
Interpretation	19b	Give an overall interpretation of the results, considering objectives, limitations, and results from similar studies, and other relevant evidence.	p. 10-11
Implications	20	Discuss the potential clinical use of the model and implications for future research.	p. 10-11
Other information			
Supplementary information	21	Provide information about the availability of supplementary resources, such as study protocol, Web calculator, and data sets.	p.12
Funding	22	Give the source of funding and the role of the funders for the present study.	p.2

We recommend using the TRIPOD Checklist in conjunction with the TRIPOD Explanation and Elaboration document.

Additional Figures and Tables

ST1: Features overview.

Category	Variable	Count	Encoding	Missingness	Transformations	Data Sources	Definition
Disease codes:							
	Certain conditions originating in the perinatal period	59	binary - (0, 1)	DNPR	Cat.: 1712
	Certain infectious and parasitic diseases	173	binary - (0, 1)	DNPR	Cat.: 1712
	Congenital malformations, deformations and chromosomal abnormalities	87	binary - (0, 1)	DNPR	Cat.: 1712
	Diseases of the blood and blood-forming organs and certain disorders involving the immune mechanism	34	binary - (0, 1)	DNPR	Cat.: 1712
	Diseases of the circulatory system	77	binary - (0, 1)	DNPR	Cat.: 1712
	Diseases of the digestive system	72	binary - (0, 1)	DNPR	Cat.: 1712
	Diseases of the ear and mastoid process	24	binary - (0, 1)	DNPR	Cat.: 1712
	Diseases of the eye and adnexa	47	binary - (0, 1)	DNPR	Cat.: 1712
	Diseases of the genitourinary system	82	binary - (0, 1)	DNPR	Cat.: 1712
	Diseases of the musculoskeletal system and connective tissue	79	binary - (0, 1)	DNPR	Cat.: 1712
	Diseases of the nervous system	68	binary - (0, 1)	DNPR	Cat.: 1712
	Diseases of the respiratory system	64	binary - (0, 1)	DNPR	Cat.: 1712
	Diseases of the skin and subcutaneous tissue	72	binary - (0, 1)	DNPR	Cat.: 1712
	Endocrine, nutritional and metabolic diseases	74	binary - (0, 1)	DNPR	Cat.: 1712
	Mental and behavioural disorders	78	binary - (0, 1)	DNPR	Cat.: 1712
	Neoplasms	48	binary - (0, 1)	DNPR	Cat.: 2000
	Pregnancy, childbirth and the puerperium	76	binary - (0, 1)	DNPR	Cat.: 1712
	Symptoms, signs and abnormal clinical and laboratory findings, not elsewhere classified	91	binary - (0, 1)	DNPR	Cat.: 2000
Genealogy:							
	Family case	20	categorical - (-1, 0, 1)	Effect coding; missing = 0	..	CPR, DNPR, CR, DR	Cat.: 20107, 20110, 20111
	Family case (1st degree relatives)	20	categorical - (-1, 0, 1)	Effect coding; missing = 0	..	CPR, DNPR, CR, DR	Cat.: 20107, 20110, 20111
	Early age (age <= 50 years) Family case	20	categorical - (-1, 0, 1)	Effect coding; missing = 0	..	CPR, DNPR, CR, DR	..
	Multiple family cases	20	categorical - (-1, 0, 1)	Effect coding; missing = 0	..	CPR, DNPR, CR, DR	Cat.: 20107, 20110, 20111
Basic Health:							
	Alcoholic	1	categorical - (-1, 0, 1)	Effect coding; missing = 0	..	BTH, DNPR	Cat.: 1558
	Smoking	1	categorical - (-1, 0, 1)	Effect coding; missing = 0	..	BTH, DNPR	Cat.: 20116
	High blood pressure	1	categorical - (-1, 0, 1)	Effect coding; missing = 0	..	BTH, DNPR	Cat.: 4079, 4080
	Low blood pressure	1	categorical - (-1, 0, 1)	Effect coding; missing = 0	..	BTH, DNPR	Cat.: 4079, 4080
	Height	1	continuous (cm)	Single mean imputation: (165f, 177m).	centered : 170 scaled:100	BTH	Cat.: 50
	Weight	1	continuous (kg)	Single mean imputation: (69f, 82m).	centered : 75 scaled:100	BTH	Cat.: 21002
	Age at first birth	1	continuous (years)	..	centered : - scaled:100	CPR, DNPR	Cat.: 2754

ST2: Additional metrics for the validation.

	Cancer	Concordance	s.d.	AUC	Brier score
Denmark	Oesophagus	0.891	0.003	0.889	0.000
	Stomach	0.854	0.004	0.852	0.000
	Colorectal	0.846	0.001	0.845	0.002
	Liver	0.905	0.004	0.903	0.000
	Pancreas	0.859	0.003	0.857	0.000
	Lung	0.887	0.001	0.885	0.002
	Melanoma	0.702	0.003	0.703	0.001
	Breast	0.751	0.002	0.753	0.005
	Cervix Uteri	0.656	0.007	0.659	0.000
	Corpus Uteri	0.850	0.003	0.849	0.001
	Ovary	0.787	0.005	0.786	0.001
	Prostate	0.890	0.001	0.890	0.004
	Testis	0.682	0.008	0.691	0.000
	Kidney	0.828	0.003	0.827	0.001
	Bladder	0.892	0.003	0.890	0.000
	Brain	0.752	0.006	0.751	0.000
	Thyroid	0.716	0.008	0.718	0.000
	Non-Hodgkin Lymphoma	0.794	0.004	0.793	0.001
	Multiple Myeloma	0.848	0.004	0.846	0.000
	AML	0.798	0.011	0.797	0.000
Other	0.796	0.001	0.796	0.007	
Death	0.886	0.001	0.887	0.008	
UK Biobank	Oesophagus	0.742	0.014	0.739	0.001
	Stomach	0.705	0.017	0.701	0.001
	Colorectal	0.657	0.007	0.654	0.004
	Liver	0.739	0.019	0.736	0.001
	Pancreas	0.667	0.014	0.663	0.001
	Lung	0.781	0.007	0.779	0.003
	Melanoma	0.573	0.011	0.570	0.002
	Breast	0.571	0.006	0.571	0.011
	Cervix Uteri	0.551	0.054	0.550	0.000
	Corpus Uteri	0.623	0.015	0.622	0.002
	Ovary	0.577	0.017	0.576	0.001
	Prostate	0.660	0.005	0.658	0.013
	Testis	0.740	0.096	0.737	0.000
	Kidney	0.673	0.014	0.669	0.001
	Bladder	0.758	0.009	0.755	0.002
	Brain	0.587	0.019	0.584	0.001
	Thyroid	0.660	0.027	0.661	0.000
	Non-Hodgkin Lymphoma	0.643	0.012	0.639	0.001
	Multiple Myeloma	0.671	0.017	0.668	0.001
	AML	0.709	0.038	0.706	0.000
Other	0.650	0.003	0.648	0.015	
Death	0.791	0.004	0.790	0.009	

ST3: Model comparison.

Cancer	Log-Likelihood					P-Values (FWER-Corrected)						
	Base	Base + Health	Base + Gene	All	UKB-AgeSex	Base / All	Base / Health	Base / Gene	Base+Health / All	Base+Gene / All	UKB-AgeSex / All	
Denmark	Oesophagus	-20326.662	-20097.864	-20321.159	-20093.123	..	0.000	0.000	0.021	0.046	0.000	..
	Stomach	-22039.178	-21991.113	-22033.892	-21985.542	..	0.000	0.000	0.025	0.019	0.000	..
	Colorectal	-153697.350	-153600.420	-153620.910	-153528.560	..	0.000	0.000	0.000	0.000	0.000	..
	Liver	-16547.177	-15631.003	-16546.814	-15629.177	..	0.000	0.000	0.901	0.560	0.000	..
	Pancreas	-30025.035	-29888.958	-30024.890	-29888.938	..	0.000	0.000	0.901	0.901	0.000	..
	Lung	-131119.800	-129100.720	-131083.150	-129041.760	..	0.000	0.000	0.000	0.000	0.000	..
	Melanoma	-82073.718	-81856.785	-81909.540	-81708.856	..	0.000	0.000	0.000	0.000	0.000	..
	Breast	-160303.310	-160980.800	-160140.350	-159937.230	..	0.000	0.000	0.000	0.000	0.000	..
	Cervix Uteri	-14084.641	-14029.227	-14052.087	-13996.080	..	0.000	0.000	0.000	0.000	0.000	..
	Corpus Uteri	-24088.914	-23882.060	-24087.109	-23881.203	..	0.000	0.000	0.574	0.901	0.000	..
	Ovary	-17526.526	-17523.697	-17524.498	-17522.032	..	0.179	0.238	0.485	0.635	0.316	..
	Prostate	-128125.440	-127932.410	-127910.540	-127718.150	..	0.000	0.000	0.000	0.000	0.000	..
	Testis	-14680.359	-14661.843	-14586.911	-14577.004	..	0.000	0.000	0.000	0.000	0.000	..
	Kidney	-31369.039	-31221.597	-31369.031	-31221.459	..	0.000	0.000	0.901	0.901	0.000	..
	Bladder	-24361.172	-24232.996	-24339.834	-24210.174	..	0.000	0.000	0.000	0.000	0.000	..
	Brain	-19830.430	-19707.512	-19828.016	-19705.472	..	0.000	0.000	0.336	0.477	0.000	..
	Thyroid	-15117.174	-15010.054	-15104.929	-14998.389	..	0.000	0.000	0.000	0.000	0.000	..
	Non-Hodgkin Lymphoma	-38351.686	-38285.587	-38350.698	-38284.298	..	0.000	0.000	0.901	0.867	0.000	..
	Multiple Myeloma	-14756.177	-14663.027	-14756.030	-14662.980	..	0.000	0.000	0.901	0.901	0.000	..
	AML	-6470.858	-6395.330	-6468.353	-6393.188	..	0.000	0.000	0.302	0.423	0.000	..
Other	-415320.660	-414354.960	-415245.180	-414287.250	..	0.000	0.000	0.000	0.000	0.000	..	
Death	-542139.070	-521669.520	-542094.930	-521584.520	..	0.000	0.000	0.000	0.000	0.000	..	
UK Biobank	Oesophagus	-3531.5363	-3503.0347	-3530.8549	-3502.4515	-3520.8277	0.000	0.000	1.000	1.000	0.000	0.000
	Stomach	-2768.6624	-2758.5274	-2768.4267	-2758.3464	-2765.9961	0.002	0.000	1.000	1.000	0.001	0.027
	Colorectal	-18342.54	-18307.128	-18330.719	-18294.988	-18338.608	0.000	0.000	0.000	0.000	0.000	0.000
	Liver	-2374.805	-2321.8366	-2373.8003	-2320.9145	-2370.1542	0.000	0.000	1.000	1.000	0.000	0.000
	Pancreas	-4453.0337	-4446.6233	-4452.7434	-4446.2871	-4450.3698	0.060	0.020	1.000	1.000	0.019	0.691
	Lung	-13613.933	-13218.56	-13585.766	-13197.524	-13580.378	0.000	0.000	0.000	0.000	0.000	0.000
	Melanoma	-8329.6242	-8325.2196	-8329.5261	-8325.1243	-8316.4255	0.522	0.147	1.000	1.000	0.147	1.000
	Breast	-26872.947	-26840.228	-26839.827	-26808.835	-26866.537	0.000	0.000	0.000	0.000	0.000	0.000
	Cervix Uteri	-390.77281	-389.71526	-390.211	-389.1597	-390.68294	1.000	1.000	1.000	1.000	1.000	1.000
	Corpus Uteri	-4524.5095	-4486.6616	-4524.3545	-4486.4278	-4524.2196	0.000	0.000	1.000	1.000	0.000	0.000
	Ovary	-3227.4494	-3226.7124	-3226.365	-3225.8125	-3225.0276	1.000	1.000	1.000	1.000	1.000	1.000
	Prostate	-26920.688	-26910.062	-26893.111	-26882.965	-26896.436	0.000	0.000	0.000	0.000	0.000	0.000
	Testis	-132.0101	-126.92298	-130.50462	-125.3686	-132.09463	0.067	0.073	1.000	1.000	0.069	0.061
	Kidney	-4532.2661	-4526.9541	-4532.1961	-4526.8798	-4528.2026	0.224	0.058	1.000	1.000	0.058	1.000
	Bladder	-7577.9878	-7559.3102	-7573.8966	-7555.19	-7562.0885	0.000	0.000	0.207	0.201	0.000	0.052
	Brain	-2667.9257	-2667.5505	-2667.5118	-2667.1313	-2664.0967	1.000	1.000	1.000	1.000	1.000	1.000
	Thyroid	-1196.4797	-1180.7691	-1195.4041	-1179.6977	-1187.8032	0.000	0.000	1.000	1.000	0.000	0.018
	Non-Hodgkin Lymphoma	-6684.3819	-6670.0451	-6684.3571	-6670.0311	-6678.2122	0.000	0.000	1.000	1.000	0.000	0.017
	Multiple Myeloma	-3113.8281	-3103.4745	-3113.8099	-3103.4495	-3109.174	0.002	0.000	1.000	1.000	0.000	0.160
	AML	-711.75173	-694.54681	-711.72603	-694.40737	-710.47767	0.000	0.000	1.000	1.000	0.000	0.000
Other	-75270.965	-75222.28	-75268.819	-75220.573	-75232.146	0.000	0.000	0.980	1.000	0.000	0.001	
Death	-42397.76	-40780.501	-42385.376	-40774.579	-42238.397	0.000	0.000	0.000	0.000	0.000	0.000	

Notes: Base := Breslow Estimate for the baseline hazard based on the Danish data, Health := Diseases + Basic health factors, UKB-AgeSex := Age-Sex model fitted on the UKB data.
/ Indicates the different models that are tested against each other. FWER := Family-wise Error Rate

ST4: Kaplan Meier curve comparison of top risk quantiles between our predictions and age-sex alone.

Cancer	Denmark						UK Biobank					
	Hazard Ratio (HR)	HR - lower	HR - upper	LogRank Statistic	P-Value	P-Value (FWER)	Hazard Ratio (HR)	HR - lower	HR - upper	LogRank Statistic	P-Value	P-Value (FWER)
Oesophagus	1.974	1.566	2.489	34.435	0.000	0.000	2.623	1.096	6.281	5.063	0.024	0.391
Stomach	1.127	0.857	1.482	0.738	0.390	0.648	1.691	0.615	4.654	1.060	0.303	0.861
Colorectal	0.975	0.874	1.088	0.208	0.648	0.648	1.171	0.729	1.879	0.427	0.513	0.861
Liver	4.116	3.283	5.159	177.442	0.000	0.000	3.589	1.636	7.875	11.623	0.001	0.012
Pancreas	1.659	1.314	2.095	18.509	0.000	0.000	1.534	0.627	3.752	0.891	0.345	0.861
Lung	2.404	2.175	2.658	314.215	0.000	0.000	4.266	2.800	6.499	54.207	0.000	0.000
Melanoma	1.555	1.262	1.916	17.478	0.000	0.000	0.922	0.445	1.911	0.047	0.828	0.861
Breast	1.326	1.139	1.544	13.345	0.000	0.003	1.945	1.235	3.064	8.550	0.003	0.062
Cervix Uteri	1.196	0.589	2.426	0.246	0.620	0.648
Corpus Uteri	2.615	1.941	3.521	43.207	0.000	0.000	6.895	2.385	19.938	17.174	0.000	0.001
Ovary	1.369	0.915	2.048	2.354	0.125	0.625	3.316	0.345	31.883	1.213	0.271	0.861
Prostate	1.255	1.117	1.409	14.803	0.000	0.001	1.287	0.854	1.938	1.463	0.226	0.861
Testis	1.909	1.144	3.185	6.349	0.012	0.081
Kidney	1.567	1.212	2.025	11.978	0.001	0.005	1.253	0.519	3.024	0.253	0.615	0.861
Bladder	1.659	1.342	2.051	22.336	0.000	0.000	1.110	0.687	1.793	0.183	0.669	0.861
Brain	2.446	1.643	3.641	20.764	0.000	0.000	1.427	0.453	4.497	0.373	0.541	0.861
Thyroid	5.063	2.965	8.645	43.730	0.000	0.000	3.814	1.050	13.858	4.791	0.029	0.435
Non-Hodgkin Lymphoma	1.124	0.885	1.426	0.918	0.338	0.648	1.802	0.796	4.078	2.056	0.152	0.861
Multiple Myeloma	1.827	1.285	2.596	11.618	0.001	0.006	1.452	0.553	3.814	0.579	0.447	0.861
AML	1.585	1.062	2.366	5.166	0.023	0.138	4.068	0.864	19.156	3.702	0.054	0.707
Other	1.090	1.013	1.171	5.396	0.020	0.121	0.980	0.782	1.228	0.030	0.861	0.861
Death	3.292	3.156	3.433	3468.066	0.000	0.000	4.618	3.841	5.552	320.842	0.000	0.000

ST5: Performance comparison to QCancer

Cancer	Ours - ROC-AUC	QCancer - ROC-AUC	
		Female	Male
Oesophagus	0.889	0.863	0.856
Stomach	0.852
Colorectal	0.845	0.841	0.851
Liver	0.903
Pancreas	0.857	0.865	0.851
Lung	0.885	0.9	0.901
Melanoma	0.703
Breast	0.753	0.747	..
Cervix Uteri	0.659
Corpus Uteri	0.849	0.818	..
Ovary	0.786	0.764	..
Prostate	0.890	..	0.794
Testis	0.691
Kidney	0.827	0.849	0.856
Bladder	0.890
Brain	0.751
Thyroid	0.718
Non-Hodgkin Lymphoma	0.793
Multiple Myeloma	0.846
AML	0.797	0.798	0.79
Other	0.796
Death	0.887

Cancer	Age	Baseline									Population health informed screening								
		N	Cancers	Age - mean	Age - s.d.	Age - q10	Age - q25	Age - median	Age - q75	Age - q90	N	Cancers	Age - mean	Age - s.d.	Age - q10	Age - q25	Age - median	Age - q75	Age - q90
Oesophagus	55	67,266	24	57.93	1.36	55.98	56.85	58.21	58.85	59.69	67,266	27	56.84	2.62	52.58	55.67	57.54	58.79	59.66
	60	75,871	49	62.88	1.37	60.94	61.79	62.96	64.13	64.72	75,871	57	61.06	3.60	56.19	59.63	61.88	63.88	64.61
Oesophagus	65	98,019	93	67.64	1.43	65.48	66.55	67.63	68.88	69.38	98,019	101	65.23	4.13	60.13	63.04	66.55	68.21	69.30
Stomach	55	67,266	15	58.41	0.80	57.60	57.95	58.21	58.96	59.46	67,266	18	57.27	2.40	53.56	56.88	58.04	58.77	59.33
	60	75,871	37	62.72	1.54	60.46	61.55	62.63	64.13	64.73	75,871	40	62.13	2.23	59.08	60.46	62.29	64.00	64.66
Stomach	65	98,019	65	67.97	1.34	65.85	67.13	68.30	69.05	69.52	98,019	80	66.45	3.07	62.04	64.82	67.47	68.74	69.39
Colorectal	55	67,266	181	57.57	1.40	55.62	56.37	57.62	58.71	59.46	67,266	190	57.29	1.76	55.03	56.12	57.54	58.71	59.38
	60	75,871	233	62.66	1.43	60.64	61.38	62.79	63.96	64.55	75,871	252	62.06	2.17	59.29	60.79	62.55	63.80	64.55
Colorectal	65	98,019	430	67.58	1.37	65.72	66.46	67.59	68.72	69.47	98,019	462	66.86	2.17	63.81	65.63	67.21	68.55	69.38
Liver	55	67,266	21	57.97	1.22	56.29	57.12	58.46	58.71	59.13	67,266	19	57.35	2.31	55.06	56.54	58.46	58.83	59.14
	60	75,871	32	63.09	1.37	61.38	62.33	63.51	64.13	64.76	75,871	38	61.04	3.52	56.20	58.58	62.46	63.86	64.46
Liver	65	98,019	64	67.89	1.27	66.26	66.94	67.97	68.90	69.44	98,019	79	65.26	4.26	58.68	63.59	66.88	68.68	69.16
Pancreas	55	67,266	27	57.80	1.33	55.71	57.08	58.04	58.71	59.58	67,266	30	57.09	2.17	53.63	56.04	57.50	58.58	59.55
	60	75,871	57	62.97	1.19	60.85	62.55	63.21	63.88	64.26	75,871	59	62.61	1.93	60.33	62.29	63.21	63.88	64.20
Pancreas	65	98,019	119	67.73	1.35	65.78	66.80	67.88	68.80	69.47	98,019	118	67.19	2.23	63.88	66.02	67.63	68.80	69.47
Lung	55	67,266	77	57.84	1.43	55.56	56.71	58.21	58.88	59.63	67,266	102	56.25	2.75	51.89	53.99	56.79	58.52	59.54
	60	75,871	191	62.72	1.44	60.63	61.46	63.04	63.88	64.55	75,871	245	60.73	3.52	55.07	58.79	61.71	63.55	64.38
Lung	65	98,019	344	67.68	1.43	65.72	66.63	67.63	68.88	69.63	98,019	492	65.10	3.92	60.13	63.04	65.96	68.05	69.30
Breast	55	37,670	334	57.63	1.43	55.62	56.46	57.71	58.88	59.52	37,670	366	56.56	2.59	52.50	55.04	57.04	58.79	59.46
	60	42,413	491	62.61	1.45	60.55	61.38	62.71	63.88	64.63	42,413	517	60.73	3.17	56.29	58.79	61.38	63.30	64.30
Breast	65	54,118	686	67.51	1.35	65.59	66.46	67.55	68.55	69.38	54,118	744	63.56	4.07	58.06	60.77	64.04	66.96	68.30
Corpus Uteri	55	37,670	56	57.51	1.44	55.63	56.12	57.46	58.81	59.42	37,670	65	56.63	2.19	53.54	55.21	56.62	58.54	59.34
	60	42,413	83	62.62	1.47	60.71	61.25	62.55	63.84	64.70	42,413	98	60.88	2.89	56.18	58.85	61.17	63.17	64.55
Corpus Uteri	65	54,118	110	67.54	1.29	65.71	66.63	67.63	68.47	69.47	54,118	144	64.77	3.88	58.69	62.52	65.67	67.88	68.83
Ovary	55	37,670	36	58.02	1.41	55.71	56.91	58.42	59.23	59.63	37,670	31	57.18	2.33	53.54	55.71	58.12	59.21	59.46
	60	42,413	59	62.82	1.43	60.94	61.67	62.71	64.21	64.73	42,413	52	62.15	2.28	59.06	60.75	62.59	64.09	64.79
Ovary	65	54,118	82	67.40	1.39	65.39	66.11	67.47	68.30	69.37	54,118	87	66.16	2.57	62.85	64.92	66.38	68.00	69.28
Prostate	55	29,596	212	57.75	1.47	55.46	56.54	57.88	59.04	59.63	29,596	222	57.50	1.77	54.87	56.37	57.75	59.04	59.63
	60	33,458	381	62.82	1.39	60.71	61.71	62.88	64.04	64.72	33,458	397	62.32	2.10	59.38	61.21	62.71	63.96	64.66
Prostate	65	43,901	840	67.62	1.38	65.72	66.55	67.88	68.72	69.38	43,901	829	66.83	2.43	63.45	65.55	67.47	68.63	69.38
Kidney	55	67,266	31	57.71	1.56	55.54	56.46	57.79	59.08	59.79	67,266	35	57.06	2.23	54.29	55.50	57.46	58.96	59.79
	60	75,871	56	63.11	1.38	60.92	61.94	63.46	64.21	64.80	75,871	64	61.68	3.22	56.33	59.88	63.34	63.90	64.69
Kidney	65	98,019	127	67.76	1.29	65.82	66.96	67.88	68.76	69.47	98,019	118	66.69	2.85	63.38	65.36	67.55	68.70	69.41
Bladder	55	67,266	60	57.87	1.48	55.53	56.93	58.12	59.15	59.71	67,266	61	57.60	1.79	55.21	56.62	57.88	59.13	59.71
	60	75,871	85	62.75	1.41	60.66	61.71	62.71	64.04	64.68	75,871	95	62.12	2.12	59.58	60.75	62.55	63.84	64.60
Bladder	65	98,019	195	67.68	1.34	65.80	66.63	67.80	68.76	69.47	98,019	207	67.13	2.02	64.35	65.96	67.47	68.72	69.47
Brain	55	67,266	29	57.59	1.29	55.86	56.46	57.62	58.46	59.39	67,266	27	57.41	1.57	55.24	56.29	57.62	58.58	59.49
	60	75,871	43	62.70	1.45	60.88	61.55	62.46	64.09	64.72	75,871	43	62.39	2.00	60.14	61.42	62.29	64.09	64.72
Brain	65	98,019	64	67.48	1.28	65.57	66.53	67.51	68.40	69.19	98,019	60	66.80	2.04	64.51	65.25	67.26	68.40	69.22
NHL	55	67,266	52	58.03	1.45	55.88	56.77	58.25	59.29	59.79	67,266	57	57.16	2.63	52.87	56.04	58.12	59.21	59.79
	60	75,871	91	62.93	1.40	60.71	61.88	63.21	64.00	64.63	75,871	94	61.69	2.97	58.26	60.15	62.50	63.88	64.63
NHL	65	98,019	162	67.63	1.41	65.72	66.55	67.55	68.94	69.63	98,019	171	66.42	3.28	62.46	65.25	67.30	68.68	69.63
MM	55	67,266	29	57.37	1.34	55.46	56.29	57.54	58.37	59.39	67,266	28	57.40	1.38	55.36	56.42	57.58	58.39	59.40
	60	75,871	29	62.43	1.45	60.92	61.21	62.38	63.30	64.66	75,871	29	62.17	1.84	59.46	61.04	62.38	63.30	64.66
MM	65	98,019	98	67.61	1.40	65.52	66.57	67.72	68.70	69.49	98,019	92	67.29	2.14	65.04	66.53	67.72	68.70	69.54
AML	55	67,266	7	57.26	1.02	55.76	56.50	57.54	58.04	58.31	67,266	8	56.96	1.24	55.46	55.77	57.37	57.96	58.28
	60	75,871	13	62.68	1.31	60.89	62.29	62.71	63.55	64.26	75,871	15	62.03	2.06	59.09	60.92	62.71	63.42	64.15
AML	65	98,019	10	68.22	1.18	66.41	67.74	68.47	68.92	69.64	98,019	17	65.23	3.84	59.96	62.96	65.96	68.47	69.28

ST7: Baseline risk comparison to Age-sex model on the UK Biobank

Cancer	Spearman Corr.	Pvalue	AUC Breslow	AUC UKB-AgeSex
Oesophagus	0.964	0.000	0.715	0.722
Stomach	0.986	0.000	0.682	0.687
Colorectal	0.991	0.000	0.639	0.640
Liver	0.977	0.000	0.701	0.701
Pancreas	0.991	0.000	0.657	0.660
Lung	0.968	0.000	0.668	0.673
Melanoma	0.836	0.000	0.577	0.591
Breast	0.615	0.000	0.535	0.547
Cervix Uteri	-0.777	0.000	0.472	0.513
Corpus Uteri	0.930	0.000	0.556	0.554
Ovary	0.995	0.000	0.575	0.576
Prostate	1.000	0.000	0.651	0.651
Testis	-0.494	0.000	0.528	0.509
Kidney	0.938	0.000	0.668	0.675
Bladder	0.998	0.000	0.751	0.751
Brain	0.969	0.000	0.588	0.594
Thyroid	0.734	0.000	0.620	0.663
Non-Hodgkin Lymphoma	0.959	0.000	0.629	0.634
Multiple Myeloma	0.981	0.000	0.659	0.662
AML	0.933	0.000	0.624	0.639
Other	0.993	0.000	0.652	0.654
Death	0.926	0.000	0.695	0.709

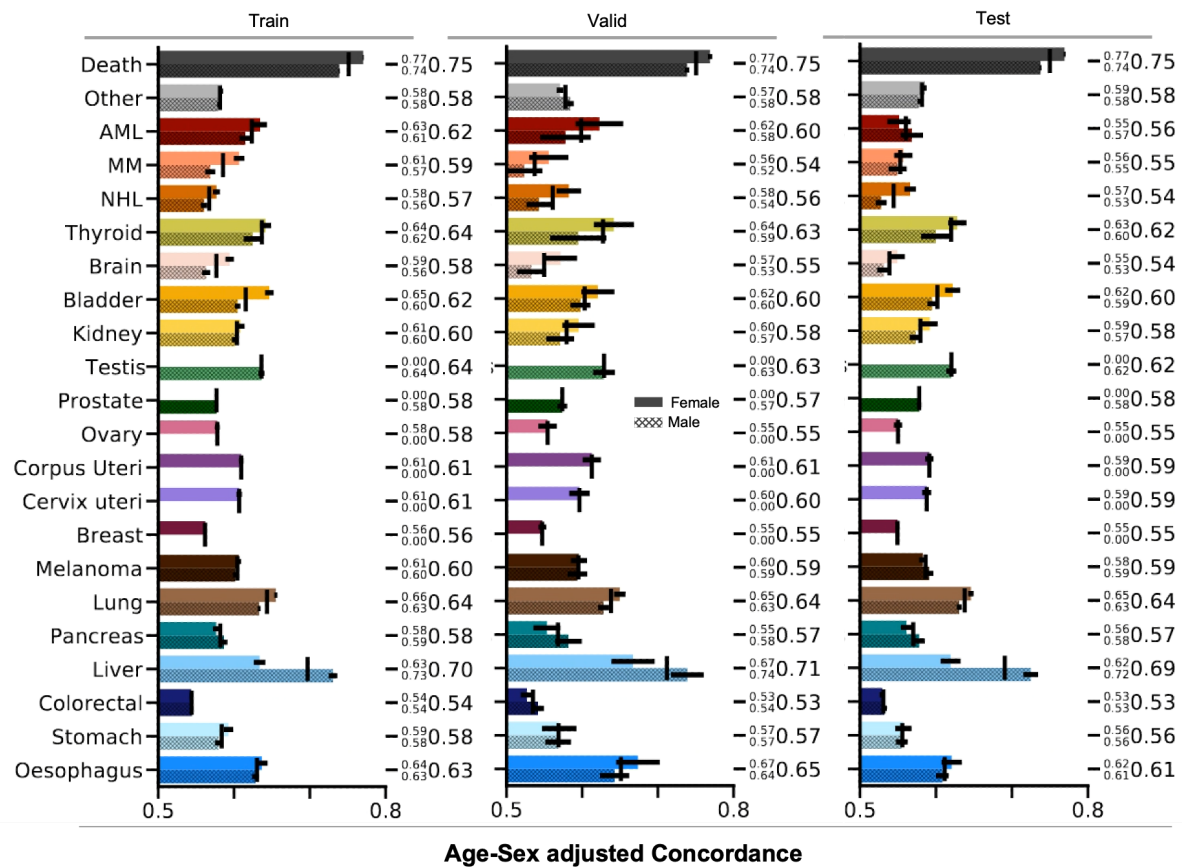
Notes: Corr := Correlation, Breslow := Baseline hazard estimate based on Danish data, UKB-AgeSex := Age-Sex model fitted on UKB data

ST8: Proportional hazards assumption for the overall predictor.

	Cancer	PH-Assumption Test	
		Chi2 Statistic	P-value
Denmark	Oesophagus	13.091	0.000
	Stomach	10.060	0.002
	Colorectal	8.734	0.003
	Liver	0.833	0.361
	Pancreas	4.667	0.031
	Lung	0.317	0.573
	Melanoma	0.087	0.769
	Breast	1.433	0.231
	Cervix Uteri	0.319	0.572
	Corpus Uteri	2.875	0.090
	Ovary	0.875	0.350
	Prostate	121.108	0.000
	Testis	1.310	0.252
	Kidney	12.333	0.000
	Bladder	2.121	0.145
	Brain	6.961	0.008
	Thyroid	0.040	0.841
	Non-Hodgkin Lyr	5.575	0.018
	Multiple Myeloma	10.409	0.001
	AML	0.008	0.928
	Other	4.097	0.043
Death	381.505	0.000	
UK Biobank	Oesophagus	2.015	0.156
	Stomach	1.752	0.186
	Colorectal	0.436	0.509
	Liver	4.105	0.043
	Pancreas	0.007	0.931
	Lung	3.013	0.083
	Melanoma	0.056	0.813
	Breast	0.100	0.752
	Cervix Uteri	0.004	0.949
	Corpus Uteri	2.324	0.127
	Ovary	2.209	0.137
	Prostate	5.032	0.025
	Testis	0.494	0.482
	Kidney	3.881	0.049
	Bladder	0.012	0.912
	Brain	1.565	0.211
	Thyroid	1.297	0.255
	Non-Hodgkin Lyr	0.237	0.626
	Multiple Myeloma	0.697	0.404
	AML	2.888	0.089
	Other	0.985	0.321
Death	67.945	0.000	

Notes: PH := Proportional Hazards

SF1: Age-sex adjusted concordance for the development data.



supplementary figure 1:

Concordance index for the development data on the Danish cohort.

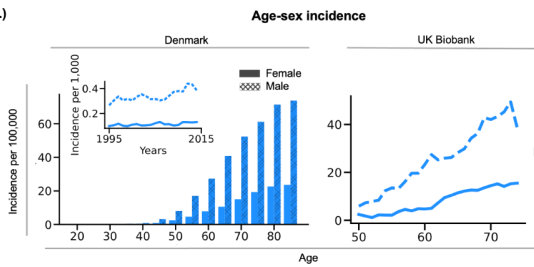
SFC-X: Summary plots

- Age-sex Incidence for the Danish and UKB cohort.
- Model estimates for underlying baseline risk.
- Forest plot based on HPD-90% – coloured for significant effects based on HPD-95%. A maximum of 30 associations are shown.
- ROC-AUC curve and calibration plot for each decentile.
- Kaplan-Meier curve for the top 1% risk quantile between our predictions and an Age-Sex baseline for the Danish and UKB cohort.
- Lower/Upper quantiles of the 5-Year absolute risk as evaluated on the Danish and UKB cohort.

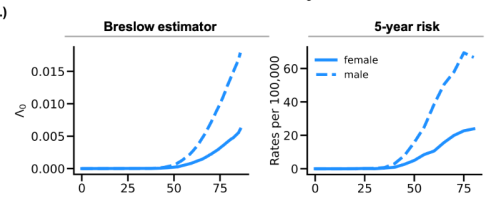
SFC1: Oesophagus

Oesophagus

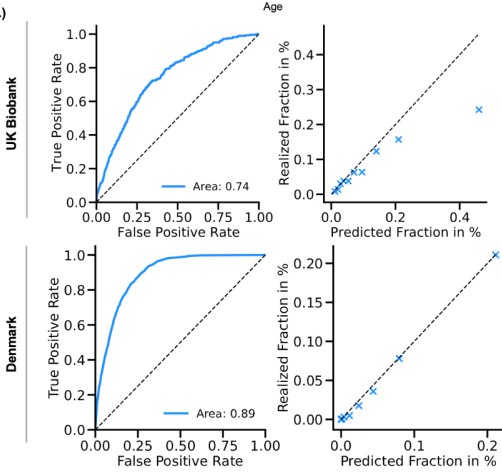
a.)



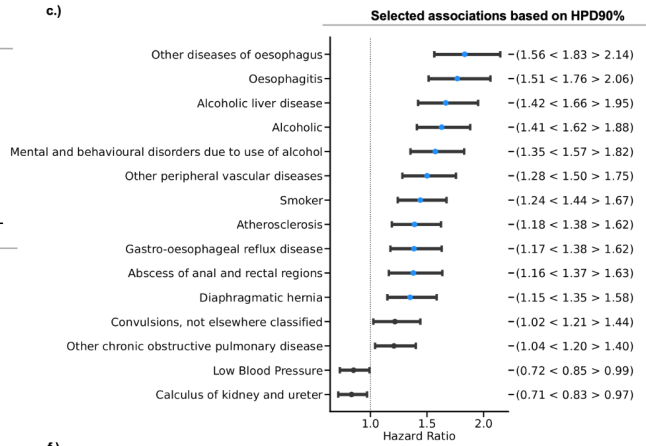
b.)



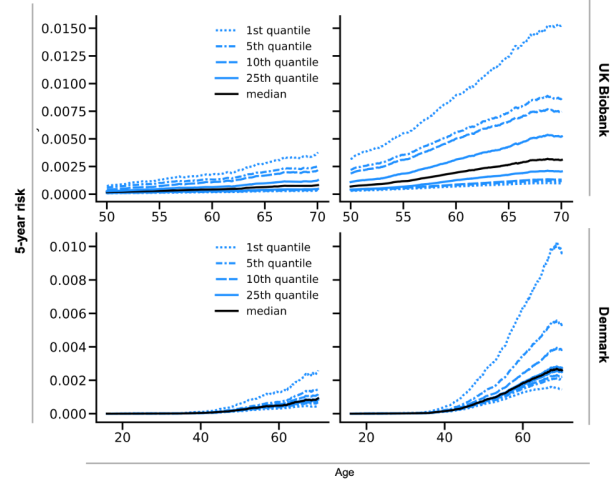
d.)



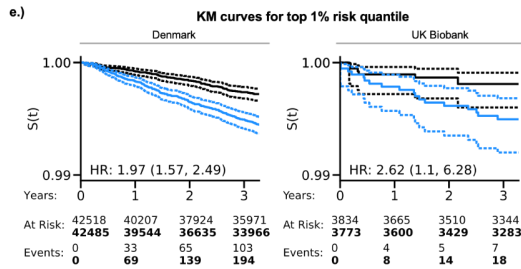
c.)



f.)

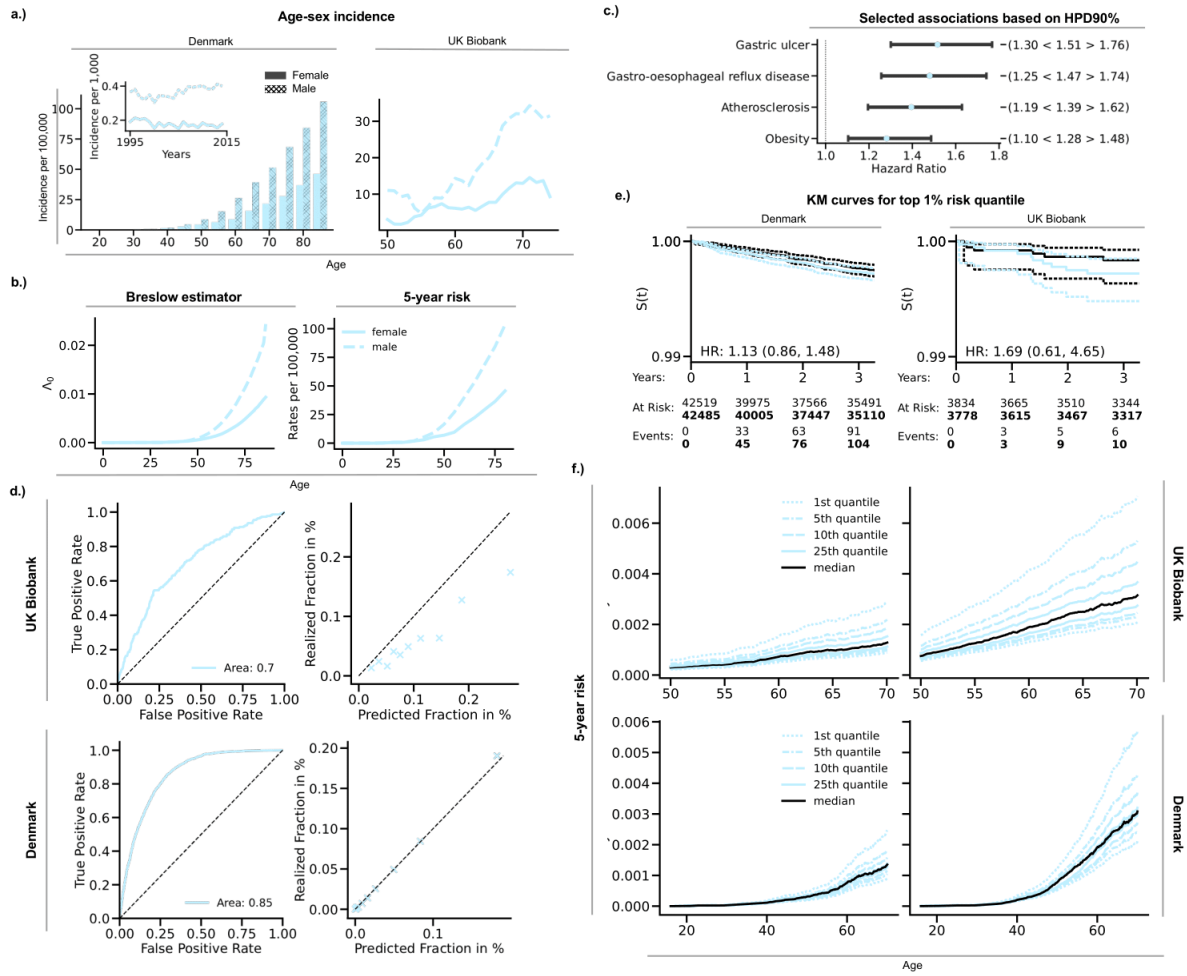


e.)



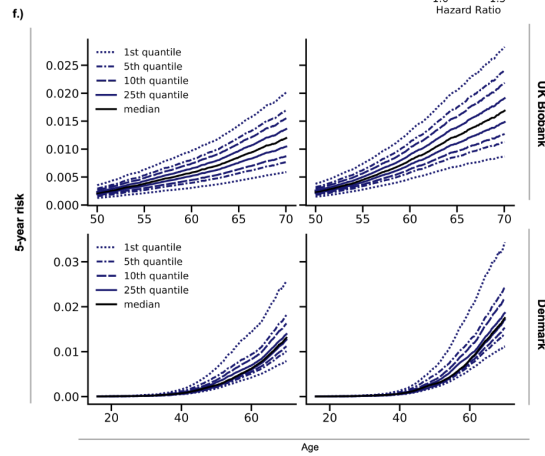
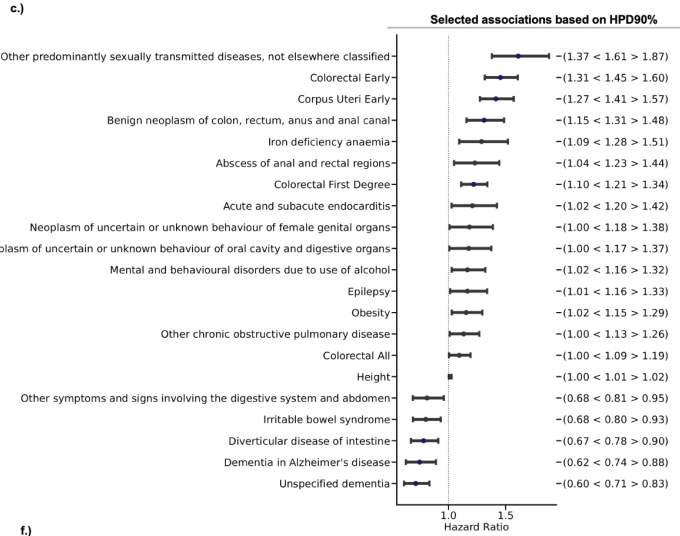
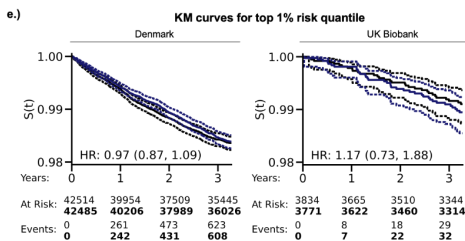
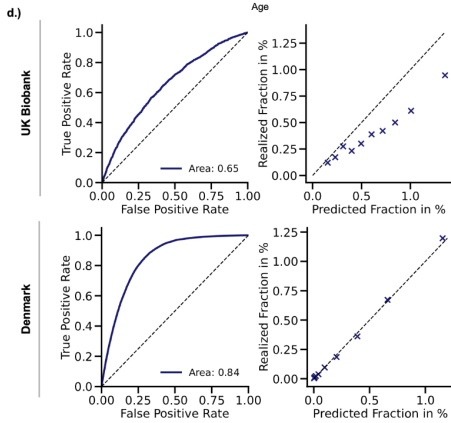
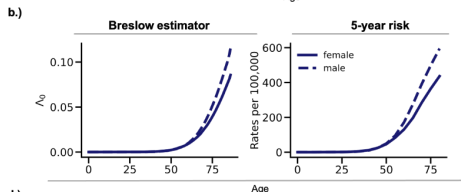
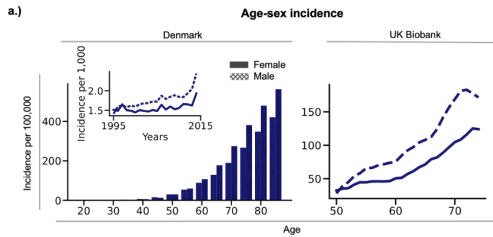
SFC2: Stomach

Stomach



SFC3: Colorectal

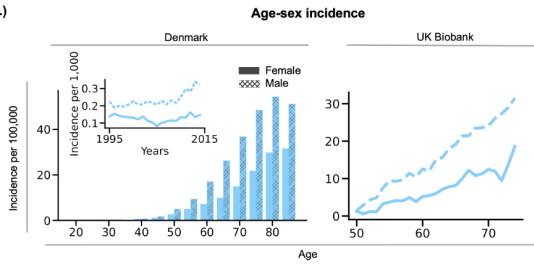
Colorectal



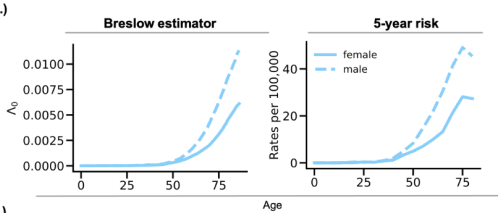
SFC4: Liver

Liver

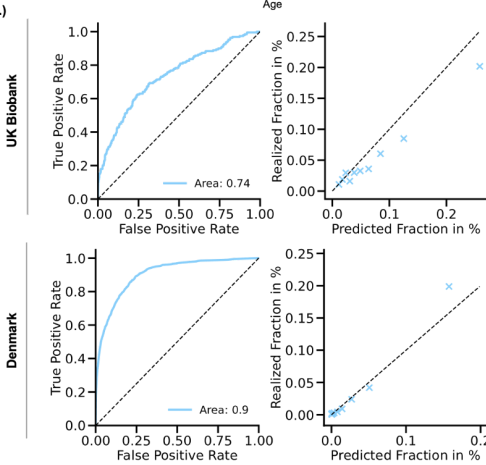
a.)



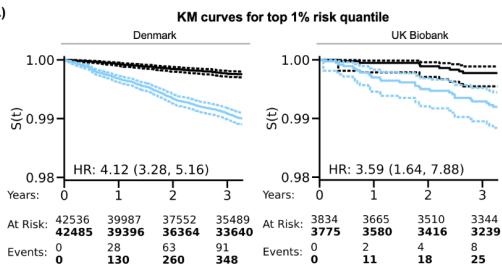
b.)



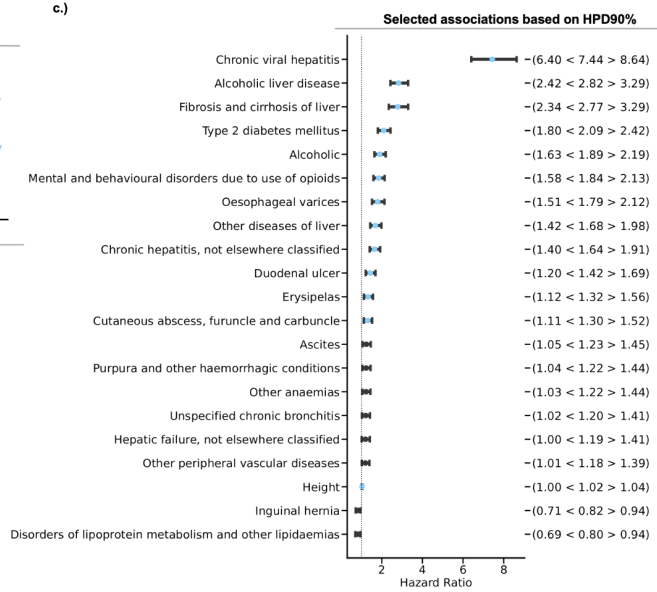
d.)



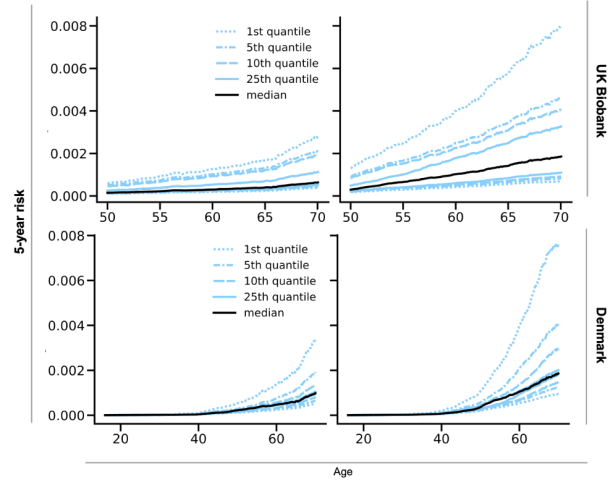
e.)



c.)

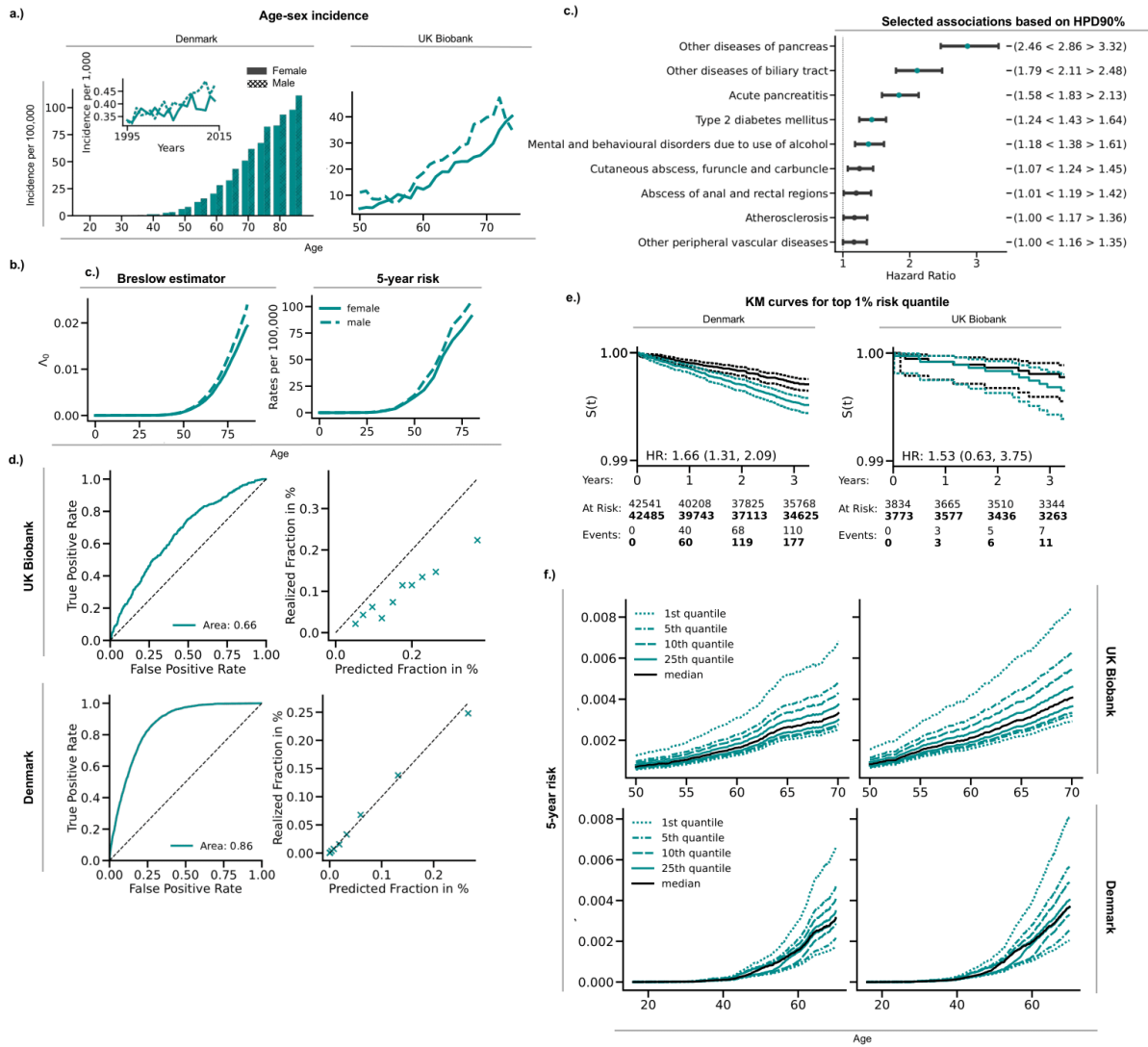


f.)



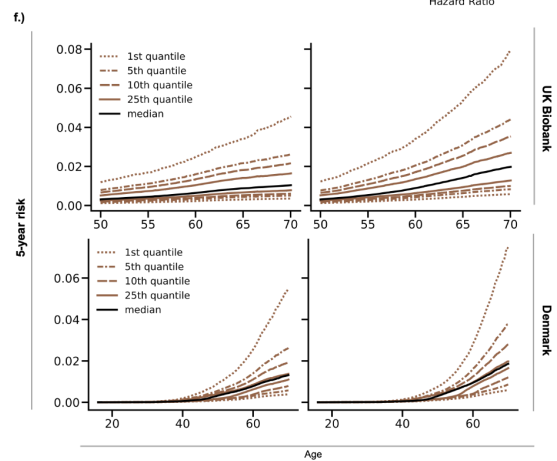
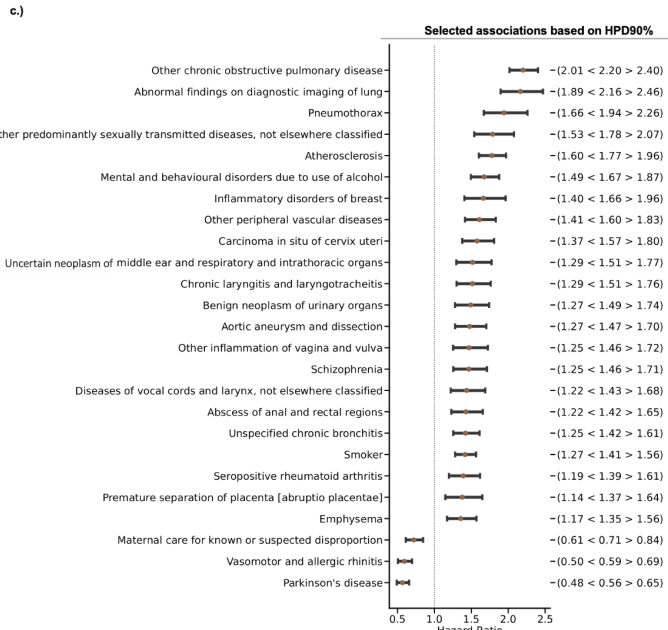
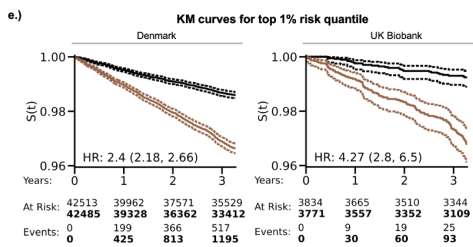
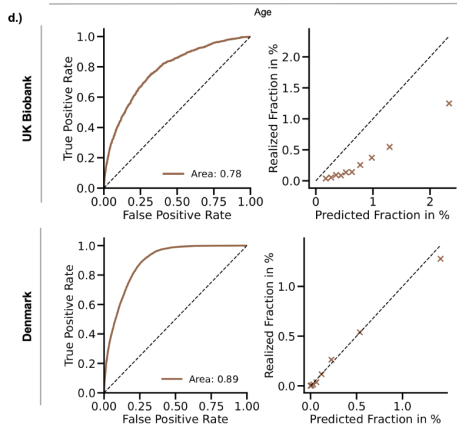
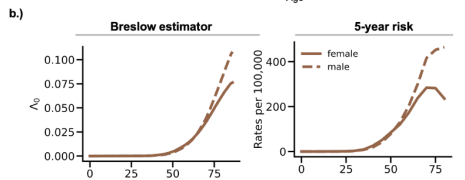
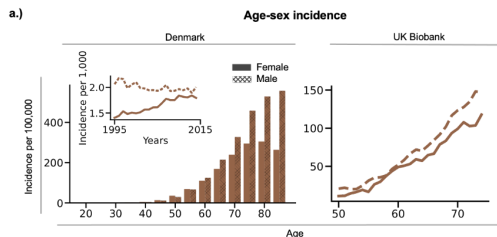
SFC5: Pancreas

Pancreas



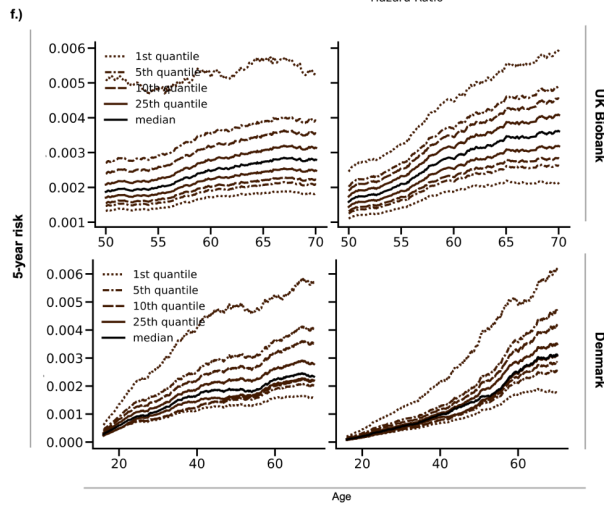
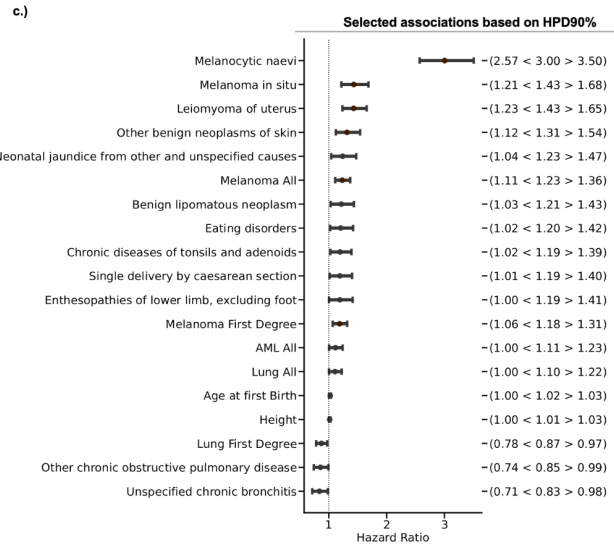
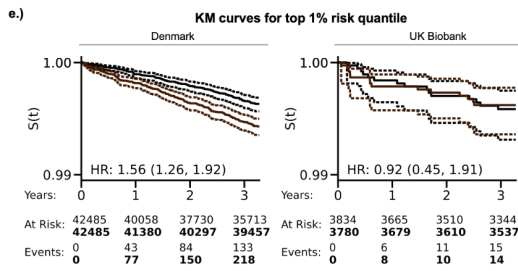
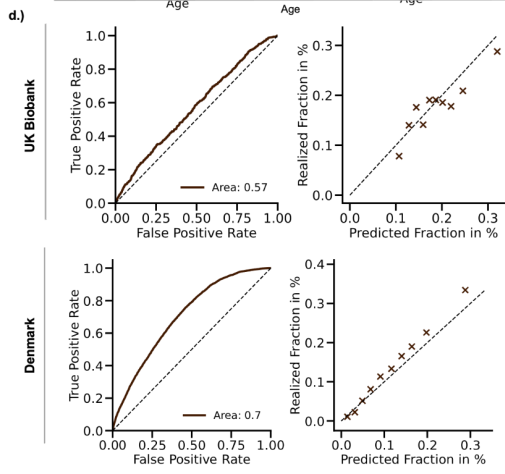
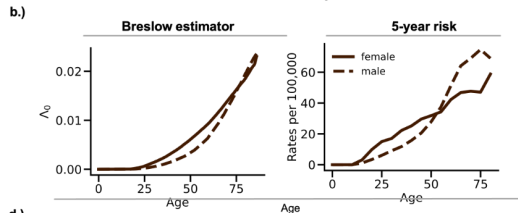
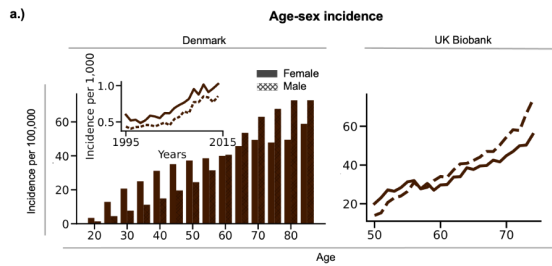
SFC6: Lung

Lung



SFC7: Melanoma

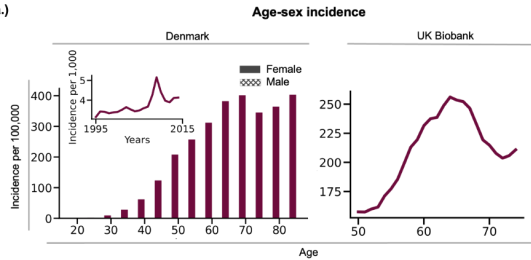
Melanoma



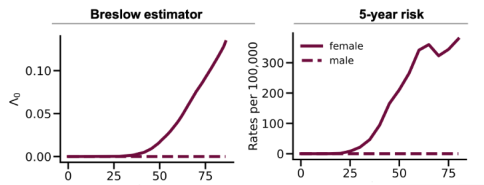
SFC8: Breast

Breast

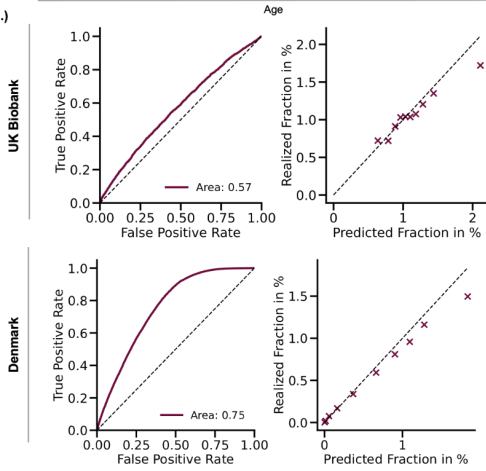
a.)



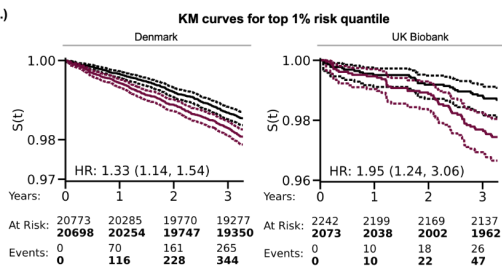
b.)



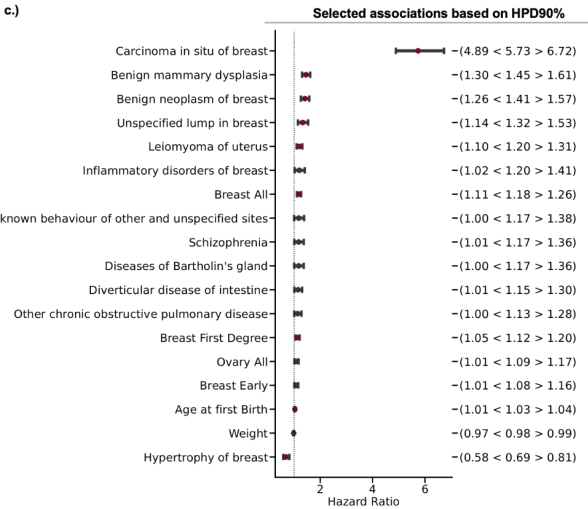
d.)



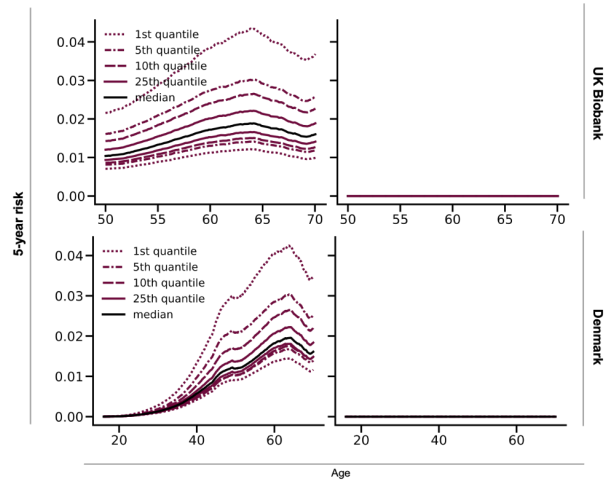
e.)



c.)



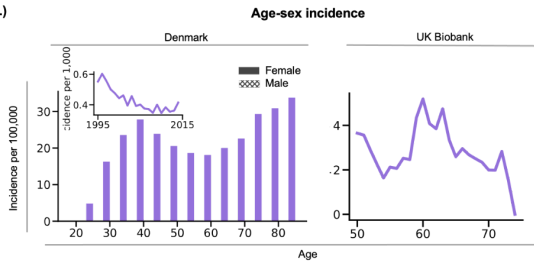
f.)



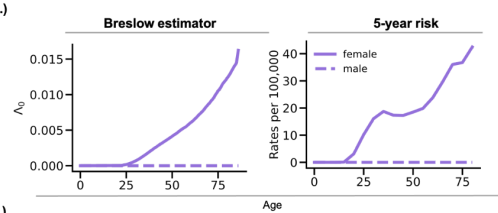
SFC9: Cervix Uteri

Cervix Uteri

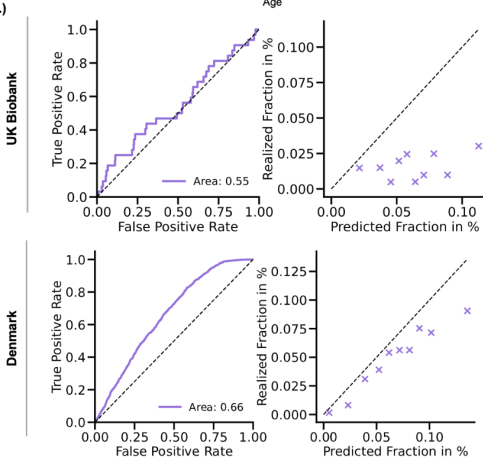
a.)



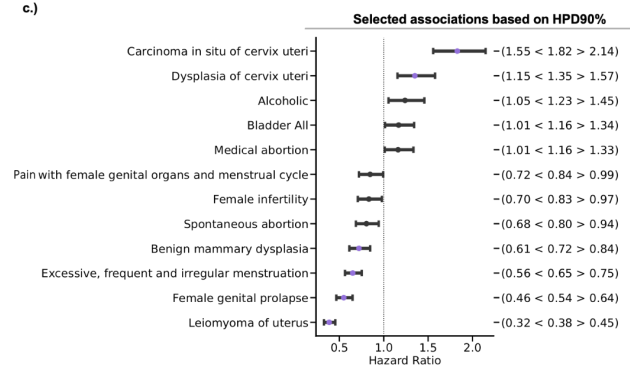
b.)



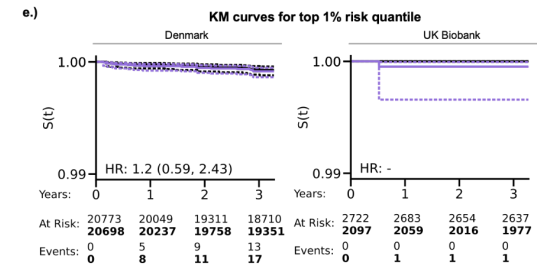
d.)



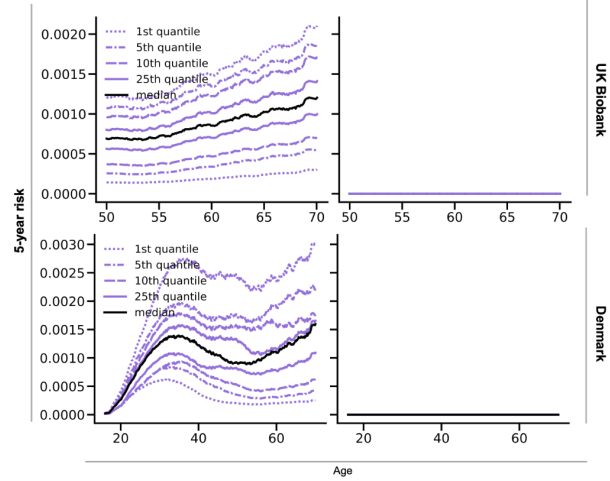
c.)



e.)

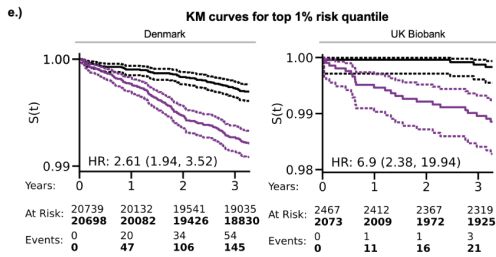
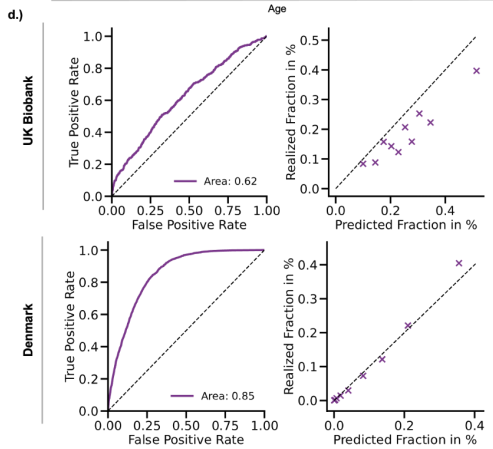
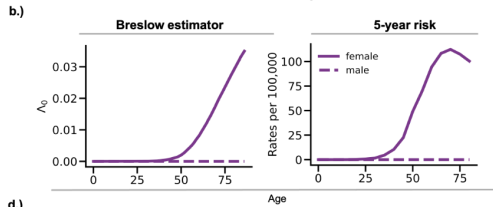
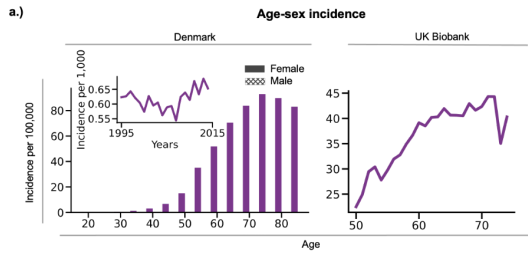


f.)

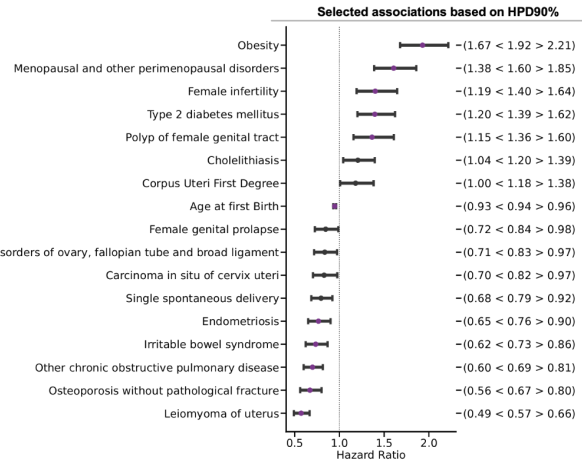


SFC10: Corpus Uteri

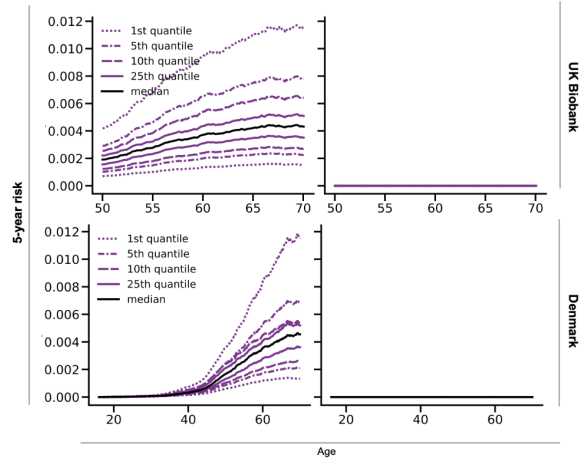
Corpus Uteri



c.)



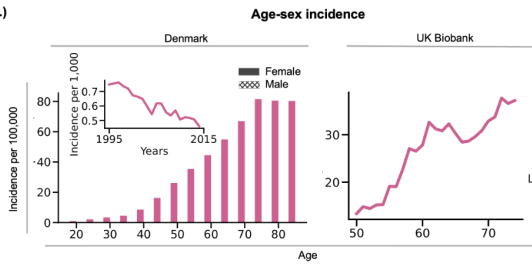
f.)



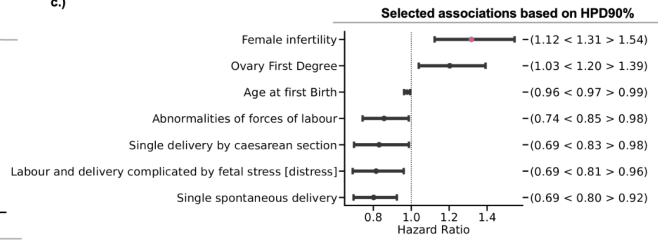
SFC11: Ovary

Ovary

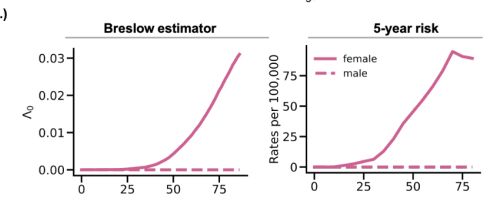
a.)



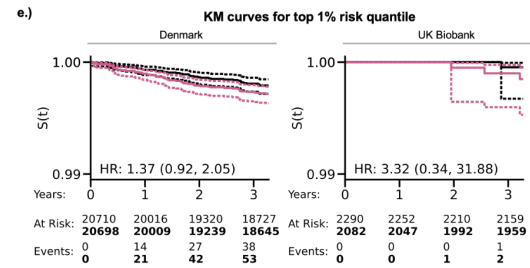
c.)



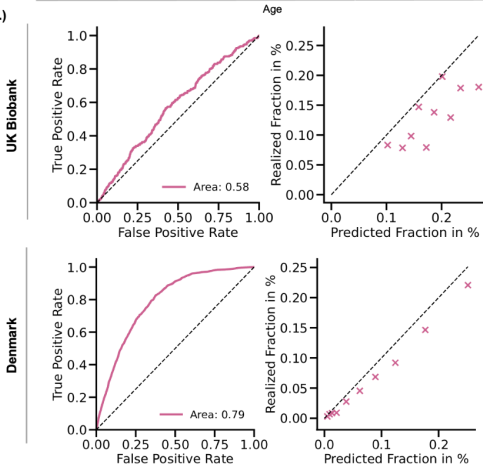
b.)



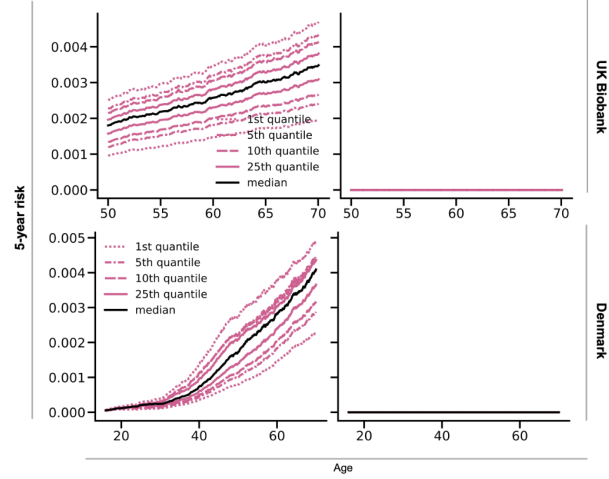
e.)



d.)

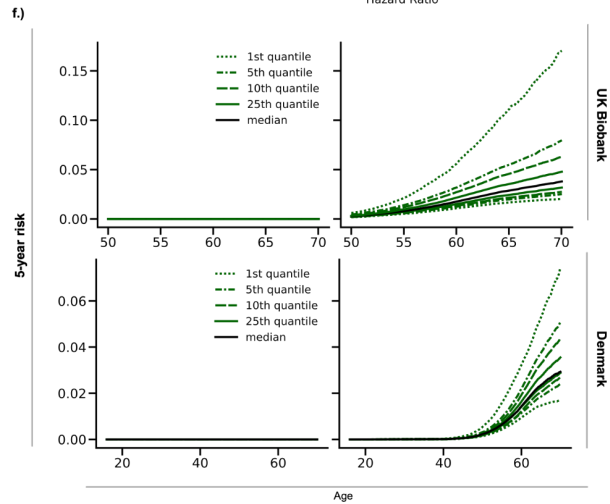
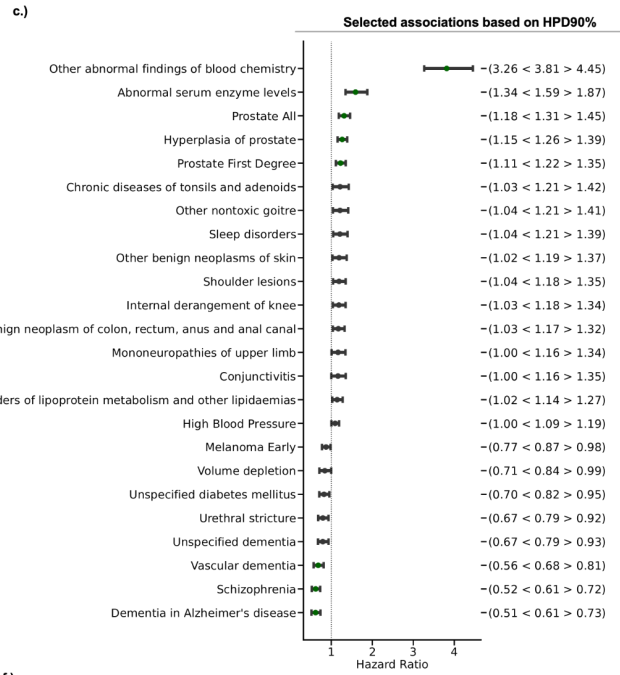
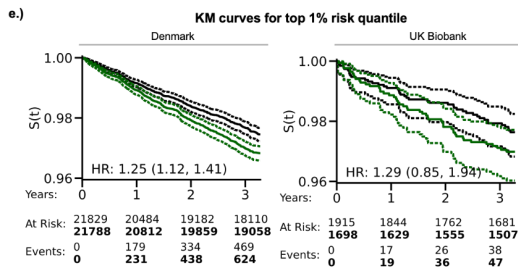
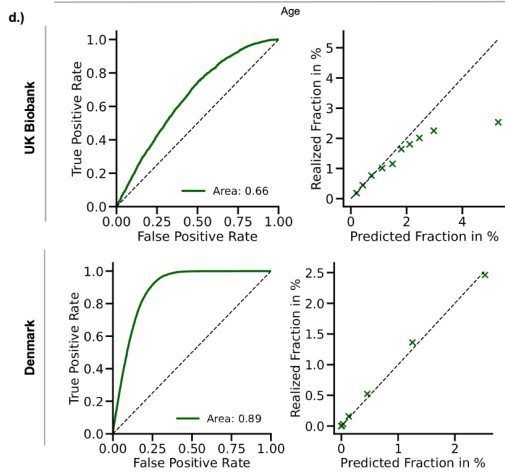
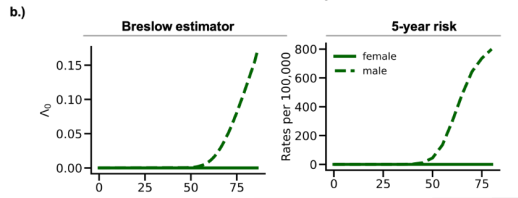
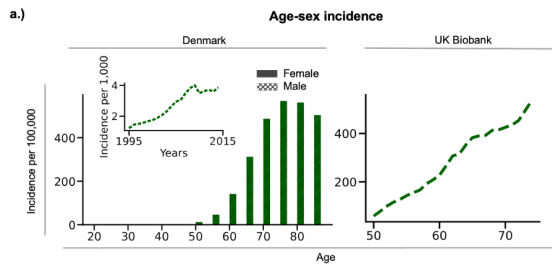


f.)



SFC12: Prostate

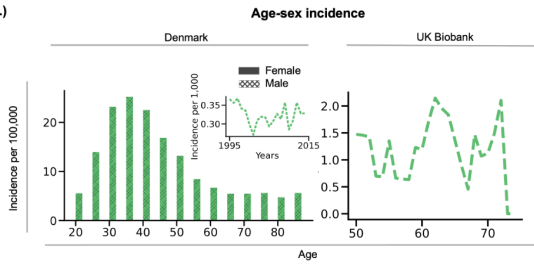
Prostate



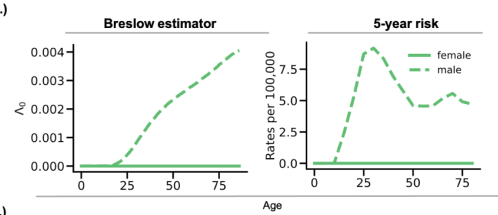
SFC13: Testis

Testis

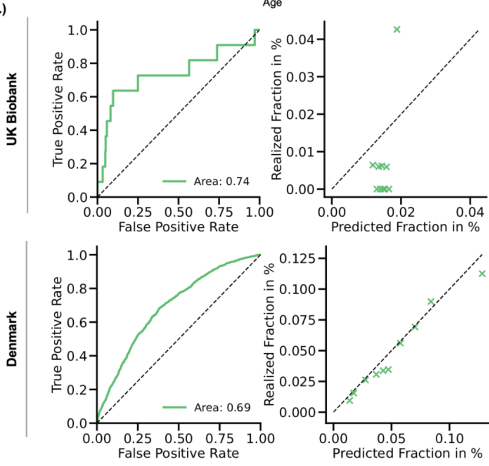
a.)



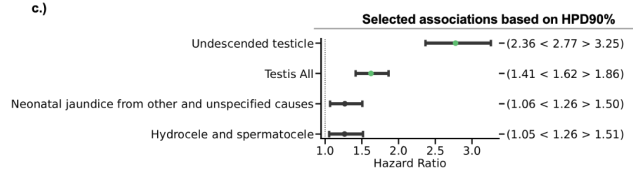
b.)



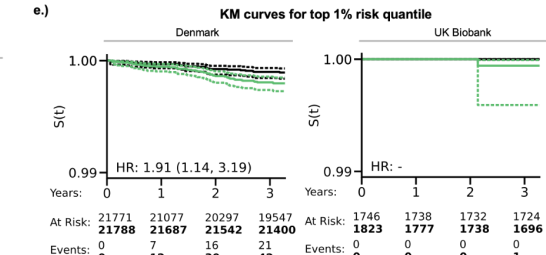
d.)



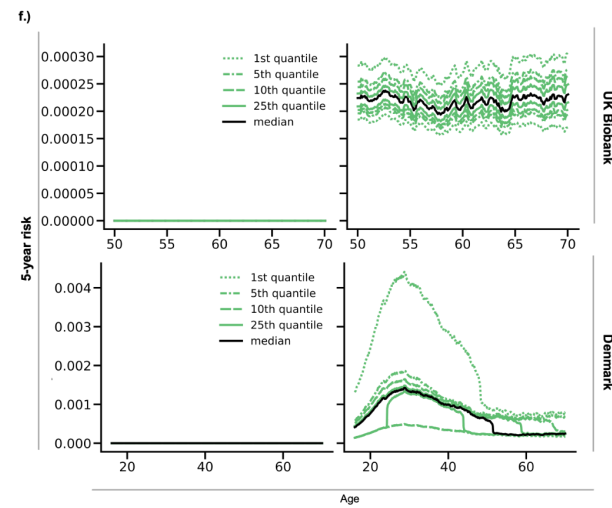
c.)



e.)



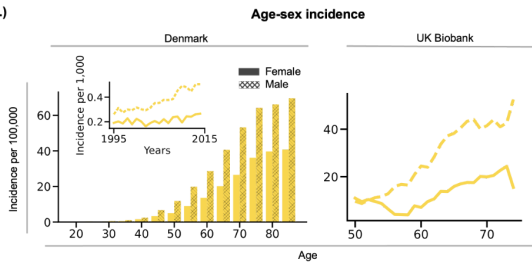
f.)



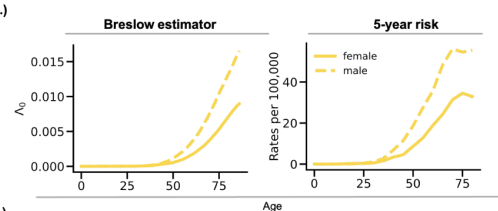
SFC14: Kidney

Kidney

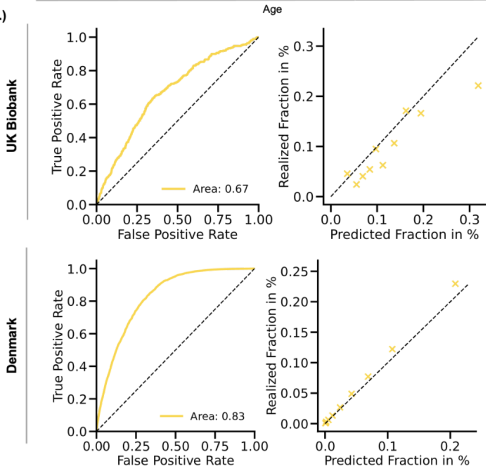
a.)



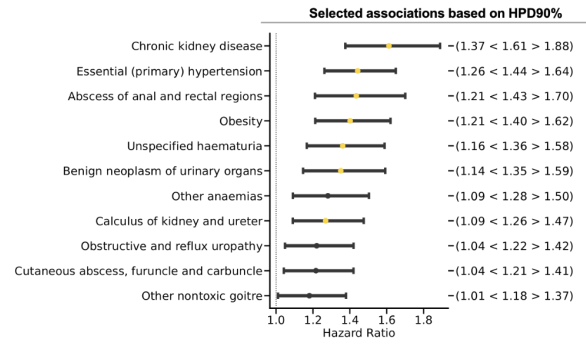
b.)



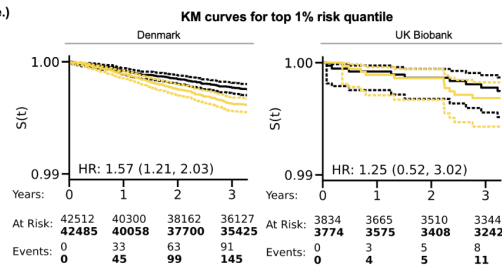
d.)



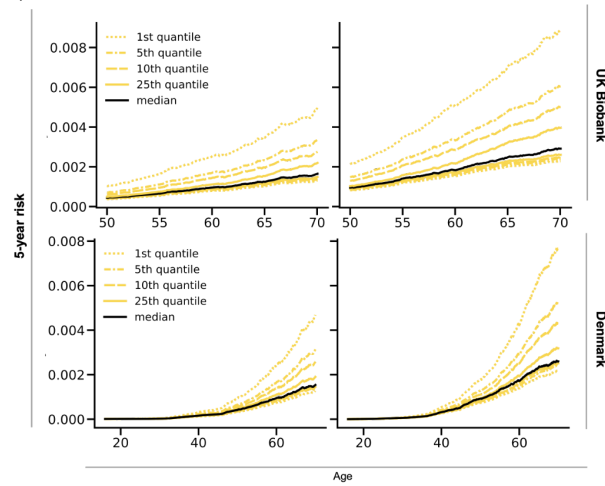
c.)



e.)



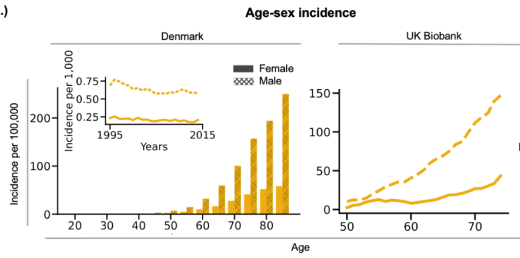
f.)



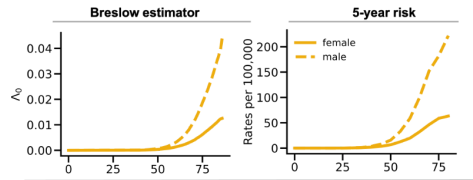
SFC15: Bladder

Bladder

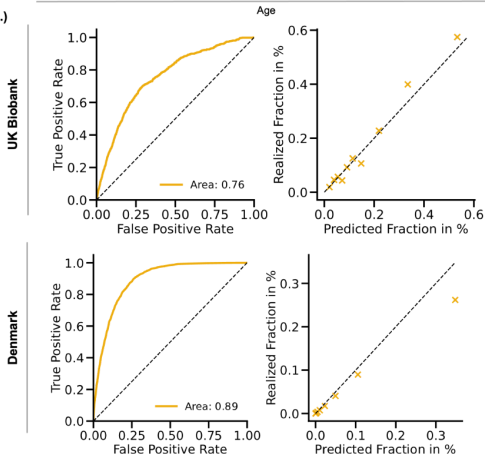
a.)



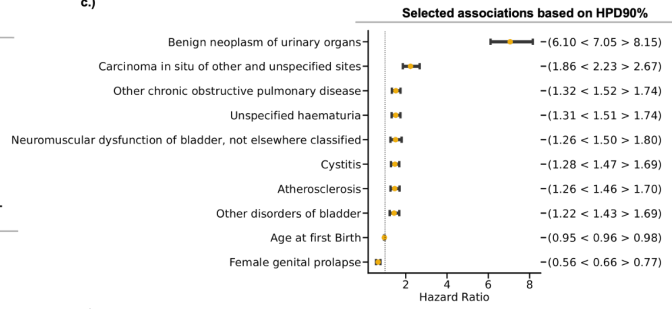
b.)



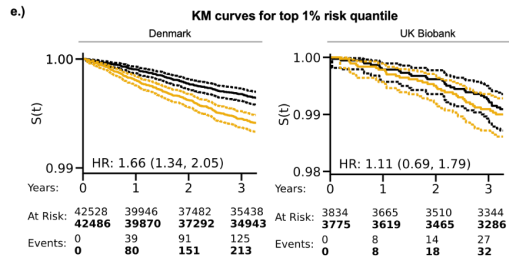
d.)



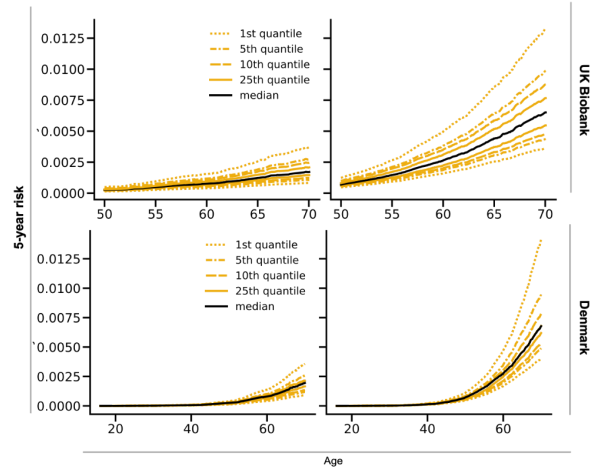
c.)



e.)



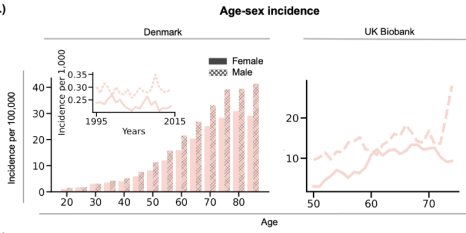
f.)



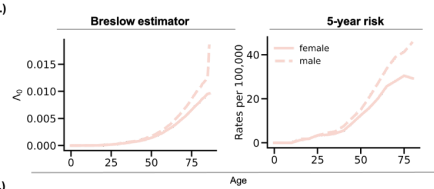
SFC16: Brain

Brain

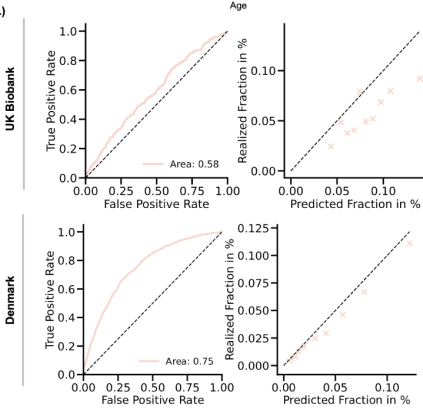
a.)



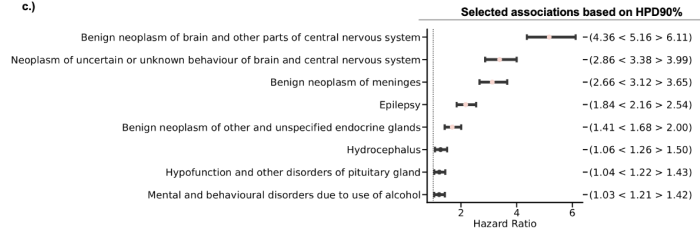
b.)



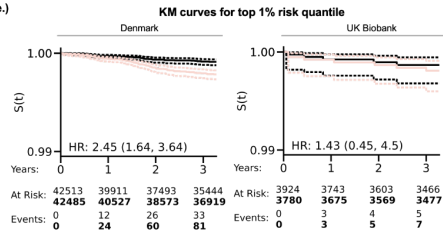
d.)



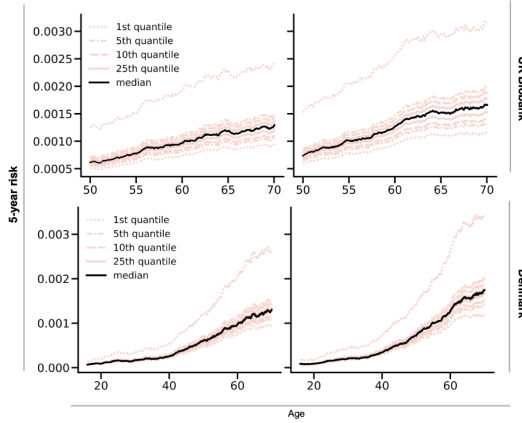
c.)



e.)



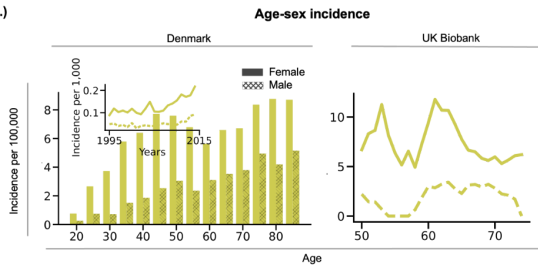
f.)



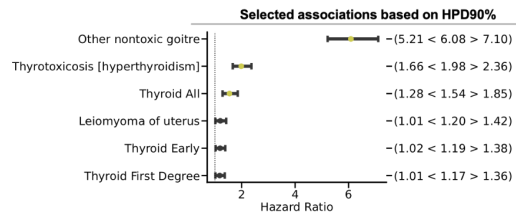
SFC17: Thyroid

Thyroid

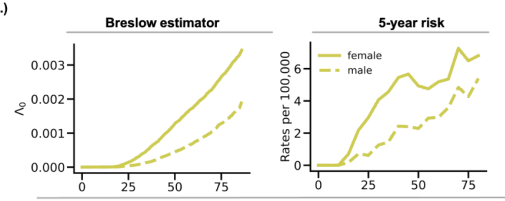
a.)



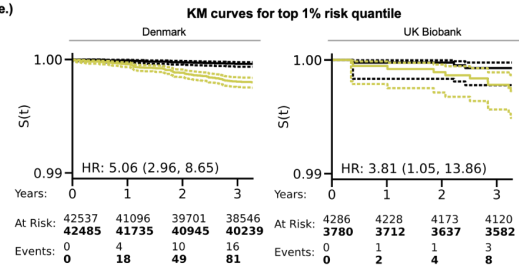
c.)



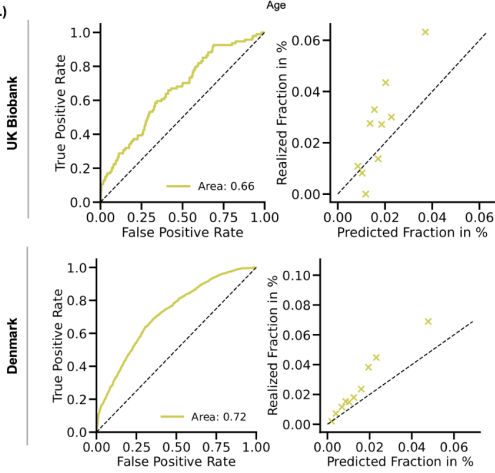
b.)



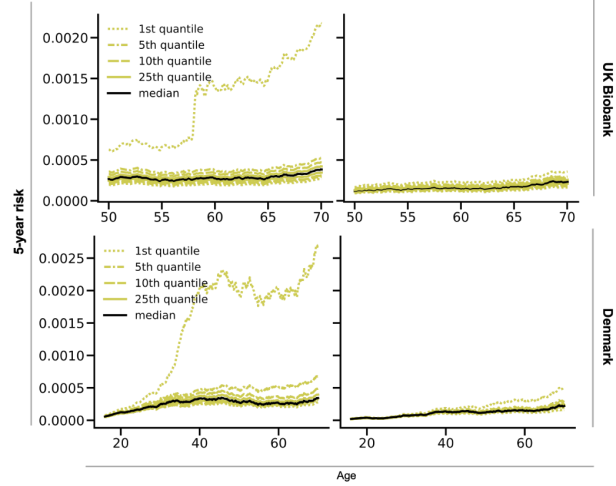
e.)



d.)



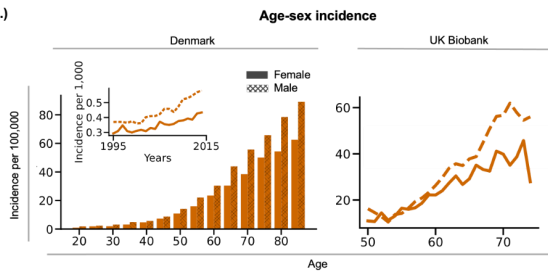
f.)



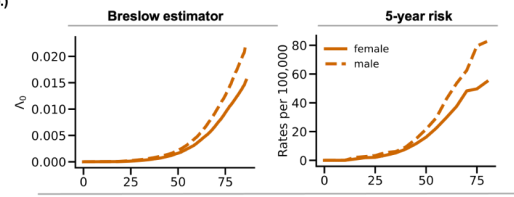
SFC18: Non-hodgkin lymphoma

Non-Hodgkin Lymphoma

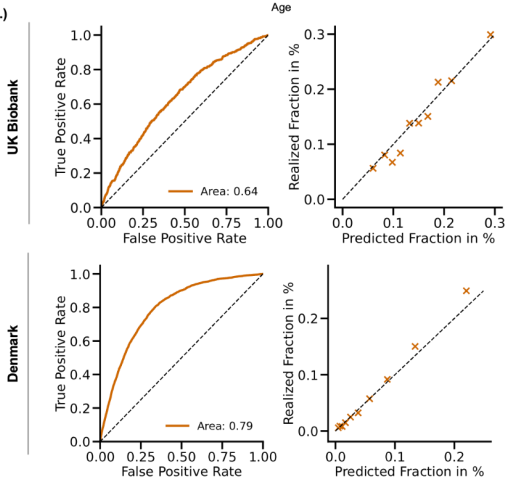
a.)



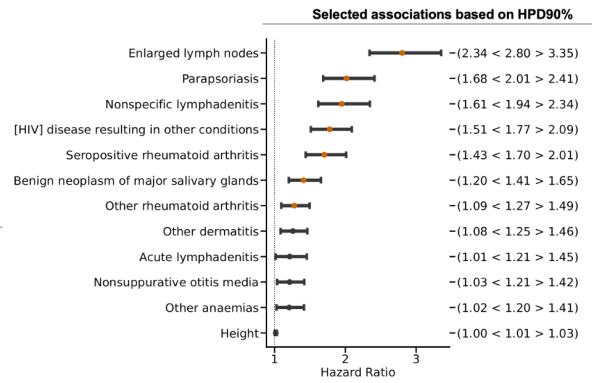
b.)



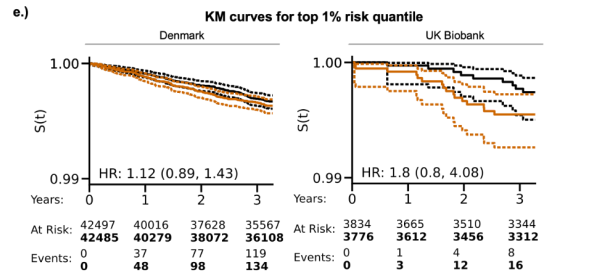
d.)



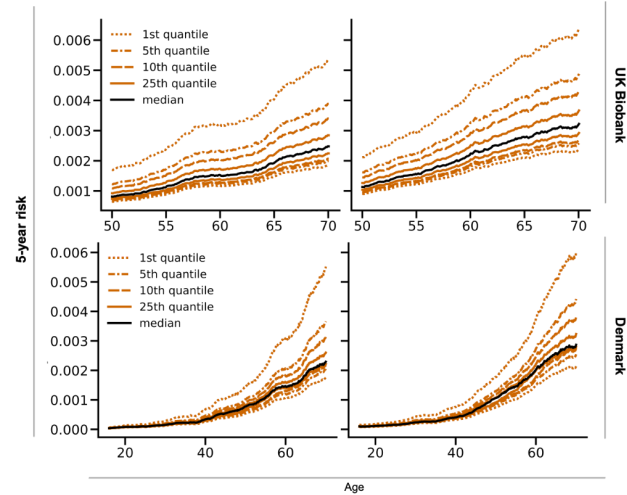
c.)



e.)



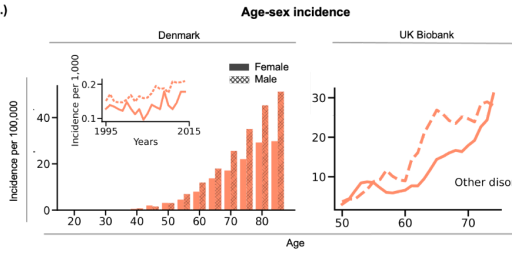
f.)



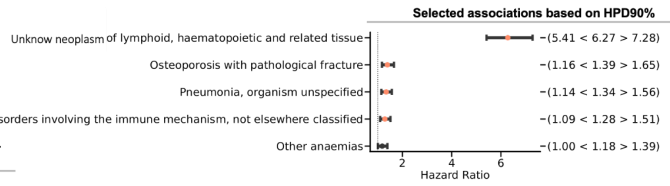
SFC19: Multiple Myeloma

Multiple Myeloma

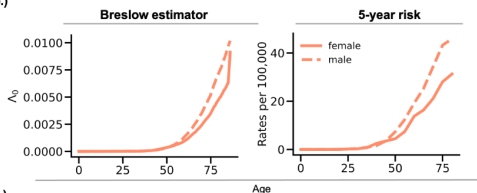
a.)



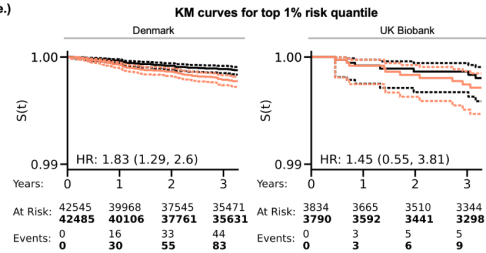
c.)



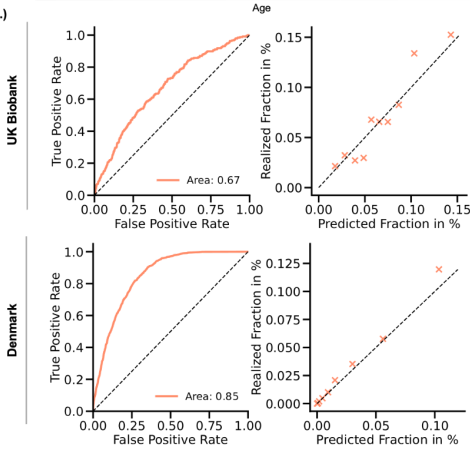
b.)



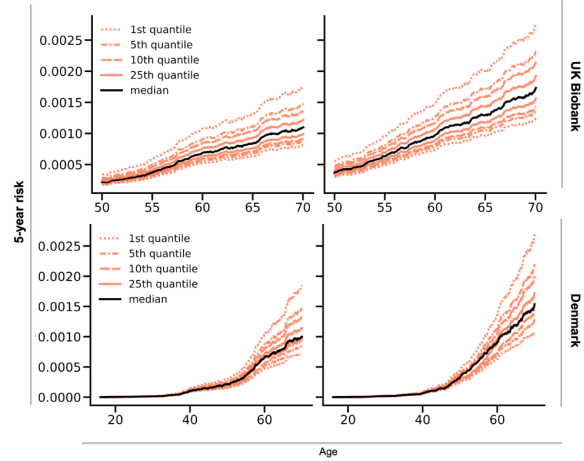
e.)



d.)



f.)



SFC20: AML

AML

