

1 **Efficacy and safety of endocrine therapy after mastectomy in patients with**
2 **hormone receptor positive breast ductal carcinoma in situ : retrospective cohort**
3 **study**

4
5 **Authors:** Nan Niu^{1,2,3†}, Yinan Zhang^{1,2,3†}, Yang Bai^{4†}, Xin Wang⁵, Shunchao Yan¹, Dong Song⁶, Hong
6 Xu⁷, Tong Liu⁸, Bin Hua⁹, Yingchao Zhang¹⁰, Jinchi Liu^{1,2,3}, Xinbo Qiao^{1,2,3}, Jiaxiang Liu⁵, Xinyu
7 Zheng^{11*}, Hongyi Cao^{12*}, Caigang Liu^{1,2,3*}

8
9 **Author Affiliations:**

- 10 1. Department of Oncology, Shengjing Hospital of China Medical University, Shenyang, China;
- 11 2. Cancer Stem Cell and Translational Medicine Laboratory, Shengjing Hospital of China Medical
12 University, Shenyang, China;
- 13 3. Innovative Cancer Drug Research and Development Engineering Center of Liaoning Province,
14 Shenyang, China;
- 15 4. Department of Nursing, Shengjing Hospital of China Medical University, Shenyang 110004,
16 China;
- 17 5. Department of Breast Surgery, National Cancer Center/National Clinical Research Center for
18 Cancer/Cancer Hospital, Chinese Academy of Medical Sciences and Peking Union Medical
19 College, Beijing, China;
- 20 6. Department of Breast Surgery, the First Hospital of Jilin University, Changchun, China;
- 21 7. Department of Breast Surgery, Liaoning Cancer Hospital and Institute, Cancer Hospital of China
22 Medical University, Shenyang, China;
- 23 8. Department of Breast Surgery, Cancer Hospital of Harbin Medical University, Harbin, China;
- 24 9. Department of General Surgery, Beijing Hospital, National Center of Gerontology, Institute of
25 Geriatric Medicine, Chinese Academy of Medical Sciences, Beijing, China;
- 26 10. Department of Breast Surgery, the Second Hospital of Jilin University, Changchun, China;
- 27 11. Department of Breast Surgery, the First Affiliated Hospital of China Medical University,
28 Shenyang, China;

29 12. Department of Pathology, the First Affiliated Hospital of China Medical University and College of
30 Basic Medical Sciences, Shenyang, China;

31

32 * **Correspondence:**

33 Corresponding Author

34 Caigang Liu, MD, PhD

35 Department of Oncology, Shengjing Hospital of China Medical University, Shenyang 110004, China

36 Tel.: 86-18940254967

37 E-mail: liucg@sj-hospital.org

38 ORCID: 0000-0003-2083-235X

39

40 †: Co-first authors

41 *: Co-corresponding authors

42 **Abstract**

43 **Background:** More than half of Chinese patients with hormone receptor positive (HR+) ductal
44 carcinoma in situ (DCIS) are treated with mastectomy, and usually followed by endocrine therapy (ET).
45 Given that long-term ET can cause severe adverse effects it is important to determine the beneficial
46 effect and safety of adjuvant ET after mastectomy on the disease-free survival (DFS) and adverse
47 events in patients with HR+ DCIS.

48 **Methods:** To explore beneficial effect and safety of ET after mastectomy in patients with HR+ DCIS,
49 we performed a multicenter, population-based study. This retrospective study analyzed the DFS and
50 adverse events in 1037 HR+ DCIS Chinese patients with or without post-mastectomy ET from eight
51 Breast Centers between 2006-2016. The median follow-up time was 86 months.

52 **Results:** There were 791 DCIS patients receiving ET (ET group). Those patients were followed-up for
53 a median of 86 months (range, 60-177 months). There were 23 cases with tumor recurrence or distant
54 metastasis. There were similar 5-year DFS rates and DFS between the ET and non-ET groups, even for
55 those with high risk factors. Conversely, 37.04% of patients suffered from adverse events after ET,
56 which were significantly higher than those in the non-ET group.

57 **Conclusion:** ET after mastectomy did not benefit patients with HR+ DCIS for their DFS, rather
58 increased adverse events in those patients. Therefore, ET after mastectomy may not be recommended
59 for patients with HR+ DCIS, even for those with high-risk factors, such as multifocal, microinvasive
60 and higher T stage.

61 **Funding :** This study was supported by grants from Outstanding Scientific Fund of Shengjing
62 Hospital (201803) and Outstanding Young Scholars of Liaoning Province (2019-YQ-10).

63 **Introduction:**

64 Breast cancer screening in adult women has improved its early detection, increasing incidence of ductal
65 carcinoma in situ (DCIS), which currently accounts for >20% of all new breast cancers in USA(Siegel,
66 Miller, Fuchs, & Jemal, 2021) . Breast-conserving surgery (BCS) plus radiotherapy (RT) has been
67 widely used for the control of invasive cancer recurrence(Shah et al., 2016). Recent studies have shown
68 that there is an increase in the percentages of DCIS patients for unilateral and bilateral mastectomy in
69 USA, particularly for young patients(Byun, Wu, Nagar, & Gerber, 2021). There are approximate 30%
70 of DCIS patients receiving mastectomy and potential breast reconstruction, especially for those with
71 widespread, multicentric DCIS in USA(Warnberg et al., 2014; Worni et al., 2015). However, there are
72 near 60% of DCIS patients receiving mastectomy in China, particularly in the economic
73 underdeveloped regions, because they have fear of cancer recurrence (FCR) and subsequent treatment
74 costs.

75 Endocrine therapy (ET) with tamoxifen or aromatase inhibitor (AI) has been recommended for
76 hormone receptor positive (HR+) breast cancer patients after BCS plus RT to reduce the risk of
77 contralateral breast cancer (CBC) and ipsilateral breast tumor recurrence (IBTR) by National
78 Comprehensive Cancer Network (NCCN)(Allred et al., 2012; Forbes et al., 2016; Ganz et al., 2016). It
79 is notable that ET after bilateral mastectomy is not recommended for HR+ DCIS patients, who have a
80 minimal risk for disease recurrence. However, ET still is being used for some HR+ DCIS patients post
81 unilateral mastectomy in Western countries because ET has been thought to reduce the risk of
82 contralateral recurrence of invasive and pure DCIS(Byun et al., 2021). In China, ET has been widely
83 used for HR+ DCIS patients after mastectomy because of FCR although no specific recommendation
84 of ET for them(Mao et al., 2021). Moreover, long-term ET can cause adverse effects, particularly for

85 post-menopausal women. However, there is no report whether ET after unilateral mastectomy can
86 benefit Chinese HR+ DCIS patients for reducing contralateral recurrence of breast cancer and
87 prolonging disease-free survival (DFS) as well as its safety. Accordingly, this retrospective cohort study
88 evaluated the efficacy and safety of ET after mastectomy in the DFS and adverse events of 1037 HR+
89 DCIS patients.

90

91 **Methods**

92 **Subjects**

93 This study was approved by the Institutional Review Board of Shengjing Hospital (approval number:
94 2020PS014K). This retrospective cohort study reviewed and analyzed the DFS and adverse events in
95 1037 HR+ DCIS patients with, or without, ET after mastectomy from December 2006 to August 2016
96 (*Figure 1*). The inclusion criteria included 1) Age > 18; 2) pathological diagnosis of HR+ DCIS
97 regardless of Her-2 status; 3) receiving mastectomy regardless of treatment with ET; 4) complete
98 medical records with regular post-operative follow-up at least for 5 years.

99 **Data collection and statistical analysis**

100 The demographic and clinical data, including age, menopausal status, diagnosis, tumor pathological
101 index, adjuvant treatments (drugs, duration), the ET-related adverse effects, tumor recurrence and
102 survival status were collected. The tumor recurrence was defined as pathologically confirmed breast
103 cancer (DCIS, invasive breast cancer) or metastatic cancers. The DFS was calculated from the
104 diagnosis to the tumor recurrence, or the last follow-up.

105 All patients were stratified, based on ET, and their demographic and clinical data were analyzed by
106 Chi-square, Fisher's exact and Wilcoxon rank sum tests where applicable. Their DFS was estimated

107 using Kaplan-Meier method and analyzed by the Log-rank test. The potential risk of individual factors
108 for the tumor recurrence was analyze by hazard ratios (HR) and 95% confidence intervals (CI). All
109 statistical analyses were performed by SPSS 24.0 software (SPSS, Chicago, USA). Statistical
110 significance was defined when a two-tailed *P*-value of <0.05.

111

112 **Results**

113 **ET after mastectomy does not significantly alter the DFS of HR+ DCIS patients.**

114 A total of 1007 HR+ DCIS patients with mastectomy were selected and their demographic and clinical
115 data, are shown in **Table 1**. According to ET treatment, those patients were stratified in the ET (n=791)
116 and non-ET (n=216) groups. There was no significant difference in any of the demographic and clinical
117 measures tested between these two groups. There were 23 cases (19 vs. 4 between the ET and non-ET
118 groups) with tumor recurrence, leading to 2.40% vs. 1.85% ($p > 0.05$, determined by Fisher exact test)
119 of tumor recurrence rate in the ET and non-ET groups throughout the 12 years post-surgical
120 observation (**Table 2**). There were 4 cases with invasive local recurrence, 3 with contralateral breast
121 cancer, 12 with distant metastasis in the ET group while 4 cases with distant metastases in the non-ET
122 group. Stratification analyses indicated the tumor recurrence rate was not significantly associated with
123 these measures, including high risk factors in this population ($P > 0.05$ for all, **Table 3**).

124 There was no significantly difference in the percentages of patients with a 5-year DFS rate of 98.36%
125 vs. 99.07% between the ET and non-ET groups ($P = 0.44$, **Figure 2A**). Further analysis revealed that
126 there was also no significant difference in the percentages of patients with DFS between these
127 subgroups ($P > 0.05$ for all, **Figure 2B-F**), suggesting that the age, larger tumor size, positive
128 microinvasive, higher tumor grade and Ki67 levels were not associated with increased risk of worse

129 DFS in this population. Hence, ET after mastectomy did not significantly reduce the tumor recurrence
130 rate and prolong the DFS in HR+ DCIS patient.

131 **The ET-related adverse effects**

132 ET can cause musculoskeletal dysfunction, vasomotor symptoms, gynecological events, cardiovascular
133 events and abnormal liver-function in women, particularly in postmenopausal women. There were 551
134 patients receiving tamoxifen, 223 with AI and others beginning with tamoxifen and later switching to
135 AI. Analysis of adverse events in both groups revealed that 37.04% of patients in the ET group
136 developed at least one adverse event, including bone fracture or endometrial cancer (n=4 each), while
137 15.28% of cases with these events in the non-ET group. There were 14.54% of patients with
138 musculoskeletal dysfunctions, such as arthralgia, joint stiffness, osteoporosis or myalgia in the ET
139 group and the percentages of some adverse events tested in the ET group were significantly higher than
140 that in the non-ET group in this population (**Figure 3**). Adverse events between TAM and AI in the ET
141 group are shown in **Table 4**.

142 Therefore, ET after mastectomy was associated with increased risk for development of different types
143 of adverse effects in patients with HR+ DCIS.

144

145 **Discussion**

146 Therapeutic strategies for HR+ DCIS, including mastectomy or BCS plus RT, have achieved a
147 similarly high survival rate in patients(Mannu et al., 2020; Narod, Iqbal, Giannakeas, Sopik, & Sun,
148 2015). Although ET after BCS plus RT is recommended for patients with HR+ DCIS, and benefits for
149 those with positive surgical margin(Allred et al., 2012; Forbes et al., 2016; Ganz et al., 2016; Wapnir et
150 al., 2011), many HR+ DCIS Asian patients chose mastectomy and received ET(Mao et al., 2021; Worni

151 et al., 2015). In the present study, 78.55 % of HR+ DCIS patients were treated with post-mastectomy
152 ET. More importantly, we found that there was no significant difference in 5-year DFS rate and tumor
153 recurrence rate in HR+ DCIS patients regardless of ET, even in those with high risk factors for tumor
154 recurrence. To the best of our knowledge, this was the first report on the efficacy of ET after
155 mastectomy in the DFS of Chinese HR+DCIS patients and these novel findings clearly indicated that
156 ET after mastectomy did not prolong the DFS of HR+ DCIS patients.

157 Long-term ET can cause multiple adverse effects, affecting the life-quality of patients. Indeed, 37.04%
158 of patients suffered from adverse events following ET. Quantitative analysis revealed that the
159 percentages of patients with musculoskeletal dysfunction, gynaecological events and abnormal
160 liver-function, but not vasomotor symptoms and cardiovascular events in the ET group were
161 significantly higher than that in the non-ET group of patients. The increased percentages of patients
162 with these clinical symptoms demonstrated that long-term ET caused multiple adverse effects in HR+
163 DCIS patients after mastectomy. Given that the majority of HR+ DCIS patients chose mastectomy with
164 a long DFS and ET after mastectomy did not prolong their DFS, rather significantly increased
165 ET-related adverse effects in those patients, our findings suggest that ET may be decreased for its dose
166 and duration or completely avoided for HR+ DCIS patients following mastectomy to improve their
167 life-quality.

168 Several limitations of our study include its retrospective nature and the length of follow-up. To fully
169 evaluate the differences in treatment, longer follow-up and randomized trials are necessary.

170

171 **Conclusions**

172 ET after mastectomy did not prolong the DFS of HR+ DCIS patients, rather increased adverse effects.

173 Our findings suggest not providing ET for HR+ DCIS patients after mastectomy.

174 **Competing interests**

175 Caigang Liu: Senior editor, *eLife*. The other authors declare that no competing interests exist.

176 **Funding**

Funder	Grant reference number	Author
Outstanding Young Scholars of Liaoning Province	2019-YQ-10	Caigang Liu
Outstanding Scientific Fund of Shengjing Hospital	201803	Caigang Liu

The funders had no role in study design, data collection and interpretation, or the decision to submit the work for publication.

177 **Author contributions**

178 Nan Niu, Data curation, Formal analysis, Writing – original draft preparation, Writing – review &
179 editing; Yinan Zhang, Investigation, Data curation, Formal analysis; Yang Bai, Investigation, Data
180 curation; Xin Wang, Investigation, Data curation; Shunchao Yan, Writing – original draft preparation;
181 Dong Song, Investigation, Data curation; Hong Xu, Investigation, Data curation; Tong Liu,
182 Investigation, Data curation; Bin Hua, Investigation, Data curation; Yingchao Zhang, Investigation,
183 Data curation; Jinchu Liu, Methodology, Formal analysis; Xinbo Qiao, Methodology, Formal analysis;
184 Jiaxiang Liu, Investigation, Data curation; Xinyu Zheng, Conceptualization, Supervision, Project
185 administration; Hongyi Cao, Investigation, Data curation, Formal analysis; Caigang Liu,
186 Conceptualization, Funding acquisition, Project administration, Writing - review and editing.

187 **Data availability**

188 All data generated or analysed during this study are included in the manuscript and supporting files.

189 **Author ORCIDs**

190 Nan Niu <https://orcid.org/0000-0002-8206-941X>

191 Caigang Liu <http://orcid.org/0000-0003-2083-235X>

192 **References**

193

194 Allred, D. C., Anderson, S. J., Paik, S., Wickerham, D. L., Nagtegaal, I. D., Swain, S. M., . . .

195 Wolmark, N. (2012). Adjuvant tamoxifen reduces subsequent breast cancer in women

196 with estrogen receptor-positive ductal carcinoma in situ: a study based on NSABP

197 protocol B-24. *J Clin Oncol*, *30*(12), 1268-1273. doi:10.1200/JCO.2010.34.0141

198 Byun, D., Wu, S., Nagar, H., & Gerber, N. (2021). Ductal Carcinoma in Situ in Young Women:

199 Increasing Rates of Mastectomy and Variability in Endocrine Therapy Use. *Annals of*

200 *surgical oncology*, *28*(11), 6083-6096. doi:10.1245/s10434-021-09972-2

201 Forbes, J. F., Sestak, I., Howell, A., Bonanni, B., Bundred, N., Levy, C., . . . Cuzick, J. (2016).

202 Anastrozole versus tamoxifen for the prevention of locoregional and contralateral

203 breast cancer in postmenopausal women with locally excised ductal carcinoma in situ

204 (IBIS-II DCIS): a double-blind, randomised controlled trial. *The Lancet*, *387*(10021),

205 866-873. doi:10.1016/s0140-6736(15)01129-0

206 Ganz, P. A., Cecchini, R. S., Julian, T. B., Margolese, R. G., Costantino, J. P., Vallow, L. A., . . .

207 Wolmark, N. (2016). Patient-reported outcomes with anastrozole versus tamoxifen for

208 postmenopausal patients with ductal carcinoma in situ treated with lumpectomy plus

209 radiotherapy (NSABP B-35): a randomised, double-blind, phase 3 clinical trial. *The*

210 *Lancet*, *387*(10021), 857-865. doi:10.1016/s0140-6736(15)01169-1

211 Mannu, G. S., Wang, Z., Broggio, J., Charman, J., Cheung, S., Kearins, O., . . . Darby, S. C.

212 (2020). Invasive breast cancer and breast cancer mortality after ductal carcinoma in

213 situ in women attending for breast screening in England, 1988-2014: population based

- 214 observational cohort study. *BMJ*, 369, m1570. doi:10.1136/bmj.m1570
- 215 Mao, G., Shi, X., Wang, X., Zhang, X., Chen, X., Ma, J., . . . Guo, X. (2021). Clinicopathological
216 Characteristics of Breast Ductal Carcinoma In Situ: An Analysis of Chinese Population
217 of 617 Patients. *Journal of oncology*, 2021, 8854418. doi:10.1155/2021/8854418
- 218 Narod, S. A., Iqbal, J., Giannakeas, V., Sopik, V., & Sun, P. (2015). Breast Cancer Mortality
219 After a Diagnosis of Ductal Carcinoma In Situ. *JAMA Oncology*, 1(7).
220 doi:10.1001/jamaoncol.2015.2510
- 221 Shah, C., Wobb, J., Manyam, B., Kundu, N., Arthur, D., Wazer, D., . . . Vicini, F. (2016).
222 Management of Ductal Carcinoma In Situ of the Breast: A Review. *JAMA Oncol*, 2(8),
223 1083-1088. doi:10.1001/jamaoncol.2016.0525
- 224 Siegel, R. L., Miller, K. D., Fuchs, H. E., & Jemal, A. (2021). Cancer Statistics, 2021. *CA
225 Cancer J Clin*, 71(1), 7-33. doi:10.3322/caac.21654
- 226 Wapnir, I. L., Dignam, J. J., Fisher, B., Mamounas, E. P., Anderson, S. J., Julian, T. B., . . .
227 Wolmark, N. (2011). Long-term outcomes of invasive ipsilateral breast tumor
228 recurrences after lumpectomy in NSABP B-17 and B-24 randomized clinical trials for
229 DCIS. *J Natl Cancer Inst*, 103(6), 478-488. doi:10.1093/jnci/djr027
- 230 Warnberg, F., Garmo, H., Emdin, S., Hedberg, V., Adwall, L., Sandelin, K., . . . Holmberg, L.
231 (2014). Effect of radiotherapy after breast-conserving surgery for ductal carcinoma in
232 situ: 20 years follow-up in the randomized SweDCIS Trial. *J Clin Oncol*, 32(32),
233 3613-3618. doi:10.1200/JCO.2014.56.2595
- 234 Worni, M., Akushevich, I., Greenup, R., Sarma, D., Ryser, M. D., Myers, E. R., & Hwang, E. S.
235 (2015). Trends in Treatment Patterns and Outcomes for Ductal Carcinoma In Situ. *J*

236 *Natl Cancer Inst*, 107(12), djv263. doi:10.1093/jnci/djv263

237

238 **Figure legends:**

239 **Figure 1. Flow chart of the study.**

240 **Figure 2. The disease-free survival of HR+ DCIS patients with or without post mastectomy ET.**

241 Kaplan-Meier analysis indicated that there was no significant difference in the DFS of HR+ DCIS patients between

242 those with and without post-mastectomy ET. (A) There was no significant difference in the DFS of HR+ DCIS

243 patients with age < 50, (B) a larger tumor, (C) positive microinvasive, (D) higher tumor grade, (E) higher Ki67

244 level, (F) between those with and without post-mastectomy ET. HR, hormone receptor; DCIS, ductal carcinoma in

245 situ; ET, endocrine therapy; DFS, disease-free survival.

246 **Figure 3. The frequency of patients with adverse effects between the ET and non-ET groups.**

247 Data are expressed as % of cases with adverse events and real case numbers labeled and analyzed by Chi-squared

248 test. *P<0.05, **P<0.01, ***P<0.001. ET, endocrine therapy.

249 **Table 1.** The demographic and clinical characteristics of patients.

	ET (N=791)	Non ET (N=216)	p-Value
Age (n, %)			0.134
≤50	448 (57%)	110 (51%)	
>50	343 (43%)	106 (49%)	
Tumor size (n, %)			0.839
≤20mm	459 (58%)	127 (59%)	
>20mm	332 (42%)	89 (41%)	
Microinvasive (n, %)			0.322
Yes	128 (16%)	29 (13%)	
No	663 (84%)	187 (87%)	
Tumor grade (n, %)			0.190
I-II	565 (71%)	164 (76%)	
III	226(29%)	52 (24%)	
Ki67 (n, %)			0.071
≥15%	279 (35%)	62 (29%)	
<15%	512 (65%)	154 (71%)	
Multifocal (n, %)			0.310
Yes	64 (8%)	13 (6%)	
No	727 (92%)	203 (94%)	

250 Notes: Data are n (%). ET, endocrine therapy.

251

252 **Table 2.** Tumor recurrence rates in patients with HR+ DCIS after mastectomy.

Tumor Recurrence	ET (N=19)	Non ET (N=4)
Invasive Local Recurrence	4 (21%)	0 (0%)
Contralateral Breast Cancer	3 (16%)	0 (0%)
Distant Metastasis		
Bone	6 (32%)	1 (25%)
Liver	2 (11%)	2 (50%)
Lung	1 (5%)	0 (0%)
Brain	1 (5%)	0 (0%)
Abdominal Cavity	1 (5%)	1 (25%)
Lymph nodes	1 (5%)	0 (0%)

253 Notes: Data are n (%). HR, hormone receptor; DCIS, ductal carcinoma in situ; ET, endocrine therapy.

254

255 **Table 3.** Stratification analysis of tumor recurrence rates in patients with HR+ DCIS after
 256 mastectomy.

Characteristic	ET (N=791)	Non ET (N=216)	HR (95% CI)	p-Value
Total	19 (791)	4 (216)	1.30 (0.48 to 3.52)	0.64
Age				
≤50	12 (448)	1 (110)	2.91 (0.74 to 11.47)	0.28
>50	7 (343)	3 (106)	0.75 (0.18 to 3.17)	0.67
Tumor size				
≤20mm	6 (459)	2 (127)	0.82 (0.15 to 4.44)	0.81
>20mm	13 (332)	2 (89)	1.75 (0.51 to 6.04)	0.45
Microinvasive				
Yes	8 (128)	0 (29)	3.48 (0.60 to 20.02)	0.16
No	11 (663)	4 (187)	0.76 (0.22 to 2.59)	0.64
Tumor grade				
I-II	10 (565)	0 (164)	3.64 (0.82 to 16.06)	0.09
III	9 (226)	4 (52)	0.51 (0.13 to 2.07)	0.26
Ki67				
≥15%	7 (279)	1 (62)	0.88 (0.09 to 8.29)	0.67
<15%	12 (512)	3 (154)	1.42 (0.46 to 4.38)	0.74
Multifocal				
Yes	3 (64)	0 (13)	3.34 (0.17 to 67.46)	0.43
No	16 (727)	4 (203)	1.11 (0.38 to 3.22)	0.85

257 Notes: HR, hormone receptor; DCIS, ductal carcinoma in situ; ET, endocrine therapy.

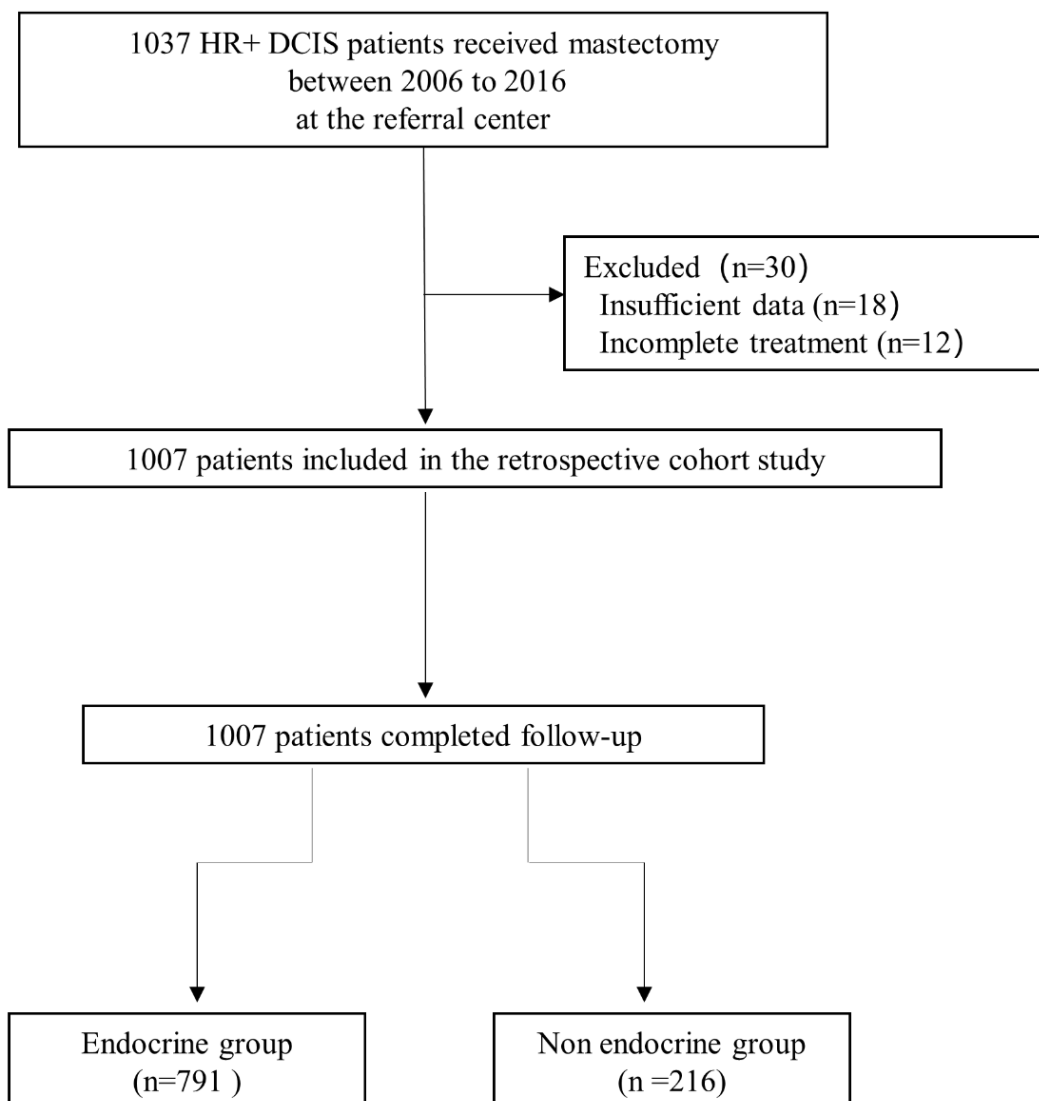
258

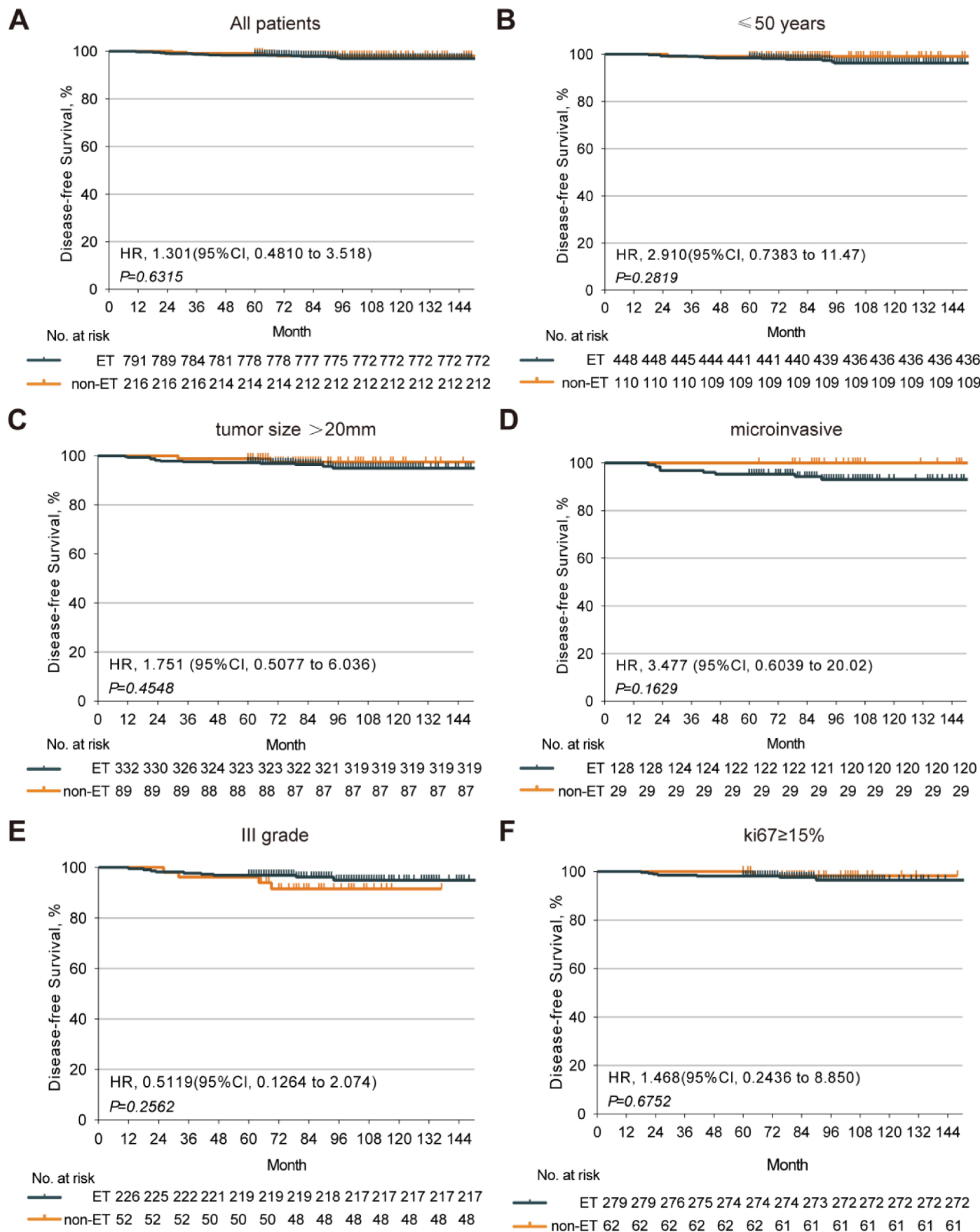
259 **Table 4.** Adverse events between TAM and AI in the ET group.

Adverse Events	TAM (N=551)	AI (N=223)
Total	212 (38%)	76 (34%)
Musculoskeletal Symptoms	61 (11%)	52 (23%)
Vasomotor Symptoms	42 (8%)	12 (5%)
Gynecological Events	113 (21%)	5 (2%)
Cardiovascular Events	26 (5%)	12 (5%)
Abnormal Liver-function	10 (2%)	4 (2%)

260 Notes: TAM, tamoxifen; AI, aromatase inhibitor; ET, endocrine therapy.

261





Adverse effects of ET and non-ET

