

The Association of Racial Residential Segregation and Long-Term Outcomes after Out-Of-Hospital Cardiac Arrest Among Medicare Beneficiaries

Ethan E Abbott^{1,4}, David G Buckler¹, Jesse Y Hsu², Benjamin S Abella³, Lynne D. Richardson^{1,4,5}, Brendan G Carr^{1,4}, Alexis M Zebrowski^{1,4}

Author Affiliations:

- 1) Icahn School of Medicine at Mount Sinai, Department of Emergency Medicine, New York, NY
- 2) University of Pennsylvania Perelman School of Medicine, Department of Biostatistics, Epidemiology, and Informatics, Philadelphia, PA
- 3) Center for Resuscitation Science and Department of Emergency Medicine, University of Pennsylvania, Philadelphia, PA
- 4) Icahn School of Medicine at Mount Sinai, Department of Population Health Science and Policy, New York, NY
- 5) Icahn School of Medicine at Mount Sinai, Institute for Health Equity Research, New York, NY

Financial Support: This work was supported by a grant from the NIH-NHLBI (#7R01HL141841-03) (PI: Brendan Carr), Dr. Abbott was supported by the Emergency Medicine Fund (EMF) Health Disparities Grant

Abstract

Background

Racial residential segregation in the US is associated with poor health outcomes across multiple chronic conditions including cardiovascular disease. However, the national impact of racial residential segregation on out-of-hospital cardiac arrest (OHCA) outcomes after initial resuscitation remains poorly understood. We sought to characterize the association between measures of racial and economic residential segregation at the ZIP code level and long-term survival after OHCA among Medicare beneficiaries.

Methods

In this retrospective cohort study, utilizing Medicare fee-for-service claims data from 2013-2015, our primary predictor was the index of concentration at the extremes (ICE), a measure of racial and economic segregation. The primary outcomes were death at 1 and 3 years. Using random-effects Cox proportional hazards models, including a shared frailty term to account for clustering at the hospital level, we estimated hazard ratios across all three types of ICE measures for each outcome while adjusting for beneficiary demographics, treating hospital characteristics, and index hospital procedures.

Results

We identified 29,847 OHCA claims for beneficiaries who survived to discharge after an OHCA. Mean beneficiary age was 75 years (SD 8); 40.1% were female, 80% White and 15.2% Black. Overall crude survival for the cohort was 54% (n=16,129) at 1 year and 40.8% (n= 12,189) at 3 years. In fully adjusted models we found a decreased hazard of death in beneficiaries residing in the most racially and economically privileged ZIP codes (Q5) compared to the least privileged areas (Q1) across all three ICE measures (race: HR:0.84; CI 0.79-0.88, income: HR 0.76; CI 0.73-0.81, race + income: HR 0.78; CI 0.74-0.83)

Conclusion

We found a decreased hazard of death for those residing in predominately White and higher income ZIP codes as compared to majority Black and lower income ZIP codes when using validated measures of racial and economic segregation. Future work will need to more closely examine the causal pathways and mechanisms related to disparities in outcomes after OHCA to better understand the impacts of spatial and living environments on long-term outcomes.

Introduction

Over 400,000 cases of out-of-hospital cardiac arrest (OHCA) occur each year in the U.S with overall low rates of survival to discharge and often with poor functional neurological status.¹⁻⁴ Known racial and ethnic disparities in the incidence and short-term survival following OHCA have been identified across multiple studies,^{2, 3, 5-10} and prior work has established that overall, OHCA survivors are a vulnerable patient population; high mortality and frequent readmissions are noted among those who survive to discharge from their index hospitalization.^{11, 12} However, longitudinal outcomes data among OHCA survivors are difficult to ascertain, resulting in an important knowledge gap. As a result, questions remain regarding the magnitude of disparities following initial resuscitation.

Racial residential segregation, the result of longstanding structural and institutional racism in the US, is associated with poor outcomes across multiple chronic health conditions including several cardiovascular diseases.¹³⁻¹⁷ Our prior work examining the association between measures of racial and economic residential segregation and survival to discharge after OHCA demonstrated a lower likelihood of survival to discharge among Medicare beneficiaries residing in predominately Black and lower income ZIP codes as compared to White and higher income ZIP codes.¹⁸ The mechanisms of residential segregation on health outcomes are complex and multifactorial but are likely to impact quality and access to healthcare, and are also spread across other social domains within each community. OHCA survivors residing in disadvantaged areas likely experience amplified disparities due to the structural and community effects of segregation that affect health and social resources along their continuum of care.

In this study we sought to characterize the association between measures of racial and economic residential segregation at the ZIP code level and long-term survival up to 3 years after OHCA. This was specifically examined among Medicare beneficiaries while accounting for

beneficiary demographics, treating hospital characteristics, and procedures performed during index hospitalization.

Methods

Study Population

We performed a retrospective observational cohort study, utilizing age-eligible (≥ 65 years old) Medicare fee-for-service claims data from the Medicare Provider Analysis and Review (MedPAR) and Outpatient Research Identifiable Files (RIF) for January 2013 – December 2015. We abstracted individual patient demographics including race/ethnicity, sex, and age from the Medicare Beneficiary Summary file. Beneficiary date of death was determined from the Vital Status File containing validated dates of death up to June 2019. Therefore, all beneficiaries had at least 3.5 years of follow up data. Claims were excluded if the patient age was < 65 years at the start of the study period. Patient-level race was characterized as Black, White, or Other due to the small distribution of beneficiaries with race or ethnicity other than White or Black in the cohort, and the final analysis focused on outcomes between Black and White beneficiaries.

We identified beneficiaries with Emergency Department (ED) treated OHCA, using claims with ICD-9-CM codes 427.5, 427.4, 427.41, 427.42 and mapped ICD-10-CM codes I46, I49.0, I49.01, I49.02 (International Classification of Diseases, Ninth and Tenth Revision, Clinical Modification) as the primary or admitting diagnosis, based on prior approaches utilized for identifying OHCA patients.¹⁹⁻²² From this group, we identified beneficiaries who survived to discharge using date of discharge and validated date of death. The primary outcome, survival up to 3 years, was identified using beneficiary death date. Beneficiaries with no documented date of death were censored on 1/1/2019. Interhospital transfer after index OHCA were included in models as a separate covariate.

Index of Concentration at the Extremes

Our primary predictor of interest was the validated Index of Concentration at the Extremes (ICE) which measures racial, income and racialized income residential segregation following a specific approach that has been refined and adapted by Krieger and colleagues.^{23, 24} They demonstrated that measures of racialized economic segregation are more robust at identifying associations with poor health outcomes and avoid potential methodological issues encountered using other approaches.^{16, 23-25}

The ICE measure is calculated as the difference between the count of the privileged population and disadvantaged population, divided by the total population. The index is the scaled difference between the population counts of the more privileged group and the less privileged group. Based on previous work using ICE, we calculated three measures including: race, income, and race and income combined²⁴ (derived from US Census ACS five-year estimates). US Census Bureau American Community Survey (ACS) five-year estimates were used to calculate ZIP-code tabulation area (ZCTA) -level racial composition and income ICE measures. These measures were then mapped to the claim based on the residential ZIP code on the index OHCA claim. Beneficiary residence was determined from the primary claim present at the index admission. All estimates were calculated at the ZIP code level.²⁶ Black and White race were utilized for racial ICE calculations as these two groups represent the extreme ends of racial privilege and deprivation for the US²³ and were also the most representative among the Medicare datasets. For the ICE measures of income, we defined the lowest income group as <\$25,000 and ≥\$100,000 for the highest income group, representative of the 20th and 80th percentiles of income for the US.¹⁶ ZIP code level ICE scores were then binned into quintiles, with Q5 representing the most economically advantaged ZIP codes and Q1 representing the least economically advantaged ZIP codes. For ICE measures of race and income combined, we examined high-income White and low-income Black based on prior work.^{16, 24, 25, 27} This approach functions to represent the extreme ends of racialized economic segregation in the US.

Covariates of interest

Patient-level

Beneficiary comorbidities were identified from secondary diagnoses present on admission in the MedPAR or outpatient RIF and summarized using the AHRQ Elixhauser Comorbidity index.^{28, 29} Beneficiary age category, sex and race were pulled from the index hospital claim. OHCA length of stay (LOS) was calculated from the first admission date to the final discharge date, including transfers to other short-stay hospital claims. Additionally, we identified cardiac catheterization and implantable cardioverter defibrillator (ICD) placement procedures performed at the first treating hospital.

Hospital-level

To address confounding from treating hospitals, we selected characteristics from the American Hospital Association Survey dataset. Hospital characteristics include number of hospital beds, hospital teaching status, availability of medical and cardiac intensive care beds, and hospital ownership (for profit, non-profit, government/non-federal).

Statistical analysis

Descriptive statistics were calculated using means with standard deviation or medians with inter-quartile ranges, as appropriate for continuous covariates of interest, and frequencies with proportions for nominal variables. To estimate the association of OHCA mortality and ZIP code ICE measures we constructed three models: 1) ICE race, 2) ICE income, and 3) ICE racialized income (income + race). We first estimated survival using Kaplan-Meier methods for each of the ICE measures independently. We then subsequently fitted a random-effects Cox proportional hazards model, including a shared frailty term to account for clustering at the hospital level, to estimate hazard ratios across all three ICE measures. All analyses and graphics were conducted using standard statistical software (R version 4.04, R Core Team:

Vienna, Austria). This study was completed in accordance with the STROBE guidelines.³⁰ The study was reviewed and approved by the Institutional Review Board at the Icahn School of Medicine at Mount Sinai.

Results

We identified 29,847 OHCA claims associated with beneficiaries who survived to discharge following OHCA, with mean beneficiary age of 75 years (SD 8); 40.1% female, 80% White; 15.2% Black; 5.8% Other (Table 1). 71.8% (n = 21, 417) of the overall cohort had a significant comorbidity burden (>5) but comorbidity burden was similar between Black and White beneficiaries. Beneficiary level median hospital length of stay (LOS) was 5 days (IQR 0-11 days) and overall, 24.4% (n = 7293) underwent cardiac catheterization and 9.0% (n = 2688) received an ICD during the first admission. The median time-to-event was 533 days (IQR 11.00, 1439.00). Crude survival for the cohort was 54% (n=16,129) at 1 year and 40.8% (n= 12,189) at 3 years.

The overall survival rates for each quintile by Kaplan-Meier estimation at 1 year for the ICE race measure ranged from Q5 (more segregated White) 54.6% (CI 0.53-0.44) to Q1 (more segregated Black) 46.3% (CI 0.45-0.48) and demonstrated similar rates across the income and racialized measures. For survival at 3 years for the ICE race measure ranged from Q5 42.5% (CI 0.41-0.44) to Q1 32.9% (CI 0.32-0.34); ICE income measure Q5 (high income) 48.3% (CI 0.47-0.50) to Q1 (low income) 32.4% (CI 0.31-0.34); and ICE race + income measure Q5 (high-income White) 48.5% (CI 0.47-0.50) to Q1 (low-income Black) 32% (0.21-0.33) (**see Figure 1**).

We found a decreased hazard of death in beneficiaries residing in the most racially and economically privileged ZIP codes (Q5) compared to the least privileged areas (Q1) across all three ICE measures (race: HR:0.84; CI 0.79-0.88, income: HR 0.76; CI 0.73-0.81, race + income: HR 0.78; CI 0.74-0.83) (**Figure 2**). This result was persistent and statistically significant across all ICE measures and quintiles except race + income measure Q2 (HR: 0.99; CI 0.94-

1.04). Among beneficiary level covariates in the ICE income and race + income models, Black race was associated with an increased hazard of death (income: HR 1.19; CI 1.14-1.24, race + income: 1.17; CI 1.12-1.23) compared to White beneficiaries, but not observed in the ICE race model. For beneficiaries who underwent interhospital transfer after index OHCA, there was a significant decreased hazard of death across all three measures (HR 0.62; CI 0.59-0.65) compared to beneficiaries not transferred. Among important predictors, beneficiaries not receiving cardiac catheterization and ICD placement at the first treating hospital was strongly associated with increased hazard of death (HR 2.25; CI 2.16-2.35) and (HR 1.95; CI 1.8-2.1), respectively and was seen in all three models as compared to beneficiaries who did **(Supplemental Figures 1-3)**.

Discussion

In this study of Medicare beneficiaries who survived to discharge after an OHCA, we demonstrated that among ICE measures of racial and economic segregation there was a decreased hazard of death for those residing in more highly segregated White and higher income ZIP codes relative to those in more highly segregated Black and lower income ZIP codes. For the three ICE measures, the income measure was the strongest predictor, with a 24% decreased hazard of death for those beneficiaries residing in Q5 compared to other quintiles and measures. This finding was present and persistent across all three ICE measures and quintiles except for racialized income measure Q2. Importantly, we also found undergoing ICD placement or cardiac catheterization during index hospitalization was a strong predictor for survival in the fully adjusted models of all three measures.

Our finding of racial disparities in long-term survival after OHCA in the context of validated measures of racial and economic residential segregation contrasts with some previous studies in the cardiac arrest literature. While there is overall limited work examining longitudinal trajectories in OHCA and none known utilizing ICE measures, prior studies have produced

mixed results regarding racial and ethnic disparities in long-term survival. Chan and colleagues found 1-year mortality rates of 31.8% and 3-year rates of 47.2% but found no survival differences by individual race when examined in a subgroup analysis in a study utilizing OHCA registry data linked to Medicare claims. Coppler et al. also noted no long-term differences in survival based on race, but found disparities based on sex, socioeconomic status, and geographic post-hospital access to care. This contrasts to a recent in-hospital cardiac arrest study that found lower survival among Black patients at 1, 3, and 5 years after adjustment for hospital site.³¹ Our results suggest that there exists a strong association between racial and economic segregation and long-term survival after OHCA which may be related to important factors related to residential communities and social context post-discharge.

We also found ICD placement and cardiac catheterization were strong predictors for survival across all three ICE measures; beneficiaries who did not undergo those procedures demonstrated an increased hazard for death. Because claims data do not include granular clinical details, we were unable to determine if specific beneficiaries met precise criteria for these interventions. However, our results are in line with several prior studies. A study of Medicare beneficiaries by Groeneveld et al. found a survival benefit for ICD implantation after OHCA for both Black and White beneficiaries. They found that Black beneficiaries had a lower probability of receiving an ICD or coronary revascularization at 90 days among those aged 66-74 years old even after full adjustment which included socioeconomic differences.³² Other studies of ICD placement using CMS data found lower utilization of the procedure among Black beneficiaries compared to White beneficiaries but somewhat equalizing by the early 2000's.³³ In a contemporary study of elderly in-hospital cardiac arrest survivors, Chen and colleagues found Black patient less likely to undergo coronary revascularization but were as likely to receive an ICD as compared to White survivors.³¹ Our study confirms the survival benefits conferred by ICD placement and cardiac catheterization for beneficiaries after index hospitalization in multivariable models with measures of residential segregation as the primary predictor. Future

work will seek if these differences in rates of procedures lead to disparities in outcomes when accounting for individual level race, ethnicity, and income.

While this study was not designed to ascertain causes, racial and economic segregation likely has complex effects on long-term OHCA survival in the context of access to care, quality of care, as well as other important social determinants. Given high rates of readmissions and post-discharge healthcare utilization after an index OHCA,^{11, 12} the structural disinvestment that has been noted to occur in the setting of residential segregation could create barriers to fundamental needs such as transportation, access to follow-up medical care, medications, and multiple other factors important for elderly OHCA survivors. These community factors may play a more important role in longitudinal outcomes however further study is warranted to identify these pathways leading to disparities in outcomes.

Overall, our work shows that where a person lives is independently and significantly associated with their hazard of death after in the three years after discharge for OHCA. This association persists after controlling for patient-level, hospital-level, and hospitalization-specific factors which are independently associated with post-discharge mortality.

Limitations

There are several noted limitations to our study. Claims data lack the granularity of registry data, and thus we were unable to include important clinical predictors such as initial arrest rhythm, EMS response times, location of arrest, or if bystander CPR was performed in our models. We also note that Medicare data include a sample population that is predominately White, thus limiting our ability to rigorously analyze associations for all racial and ethnic groups in the US. Despite these limitations, we believe that this study captures important population level data on OHCA long-term outcomes among an elderly population. Further, this work closely examines the important intersection and impact of long-standing residential segregation in the US and its association with healthcare outcomes using validated measures.

Conclusion

In this study of Medicare beneficiaries who survived to discharge after an OHCA, we found a decreased hazard of death for those residing in predominately White and higher income ZIP codes as compared to Black and lower income ZIP codes when using validated measures of racial and economic segregation. Measures of economic segregation based on income were the strongest predictor for long-term survival. This study demonstrates that racial and economic segregation are associated with disparities in outcomes for OHCA. Further study is needed to focus efforts on identifying methods to overcome systemic and institutional racism to achieve equity in health outcomes for OHCA and other cardiovascular conditions.

References

1. Cardiac Arrest Registry to Enhance Survival Surveillance, G. and (CARES), 2020 *Annual Report* Accessed online May 1, 2022 <https://mycares.net/>, 2020.
2. Girotra, S., et al., *Regional Variation in Out-of-Hospital Cardiac Arrest Survival in the United States*. *Circulation*, 2016. **133**(22): p. 2159-68.
3. Shinozaki, K., et al., *Strategies to improve cardiac arrest survival: a time to act*. *Acute Med Surg*, 2016. **3**(2): p. 61-64.
4. Tsao, C.W., et al., *Heart Disease and Stroke Statistics-2022 Update: A Report From the American Heart Association*. *Circulation*, 2022. **145**(8): p. e153-e639.
5. Albaeni, A., et al., *Regional Variation in Outcomes of Hospitalized Patients Having Out-of-Hospital Cardiac Arrest*. *Am J Cardiol*, 2017. **120**(3): p. 421-427.
6. Becker, L.B., et al., *Racial differences in the incidence of cardiac arrest and subsequent survival. The CPR Chicago Project*. *N Engl J Med*, 1993. **329**(9): p. 600-6.
7. Reinier, K., et al., *Distinctive Clinical Profile of Blacks Versus Whites Presenting With Sudden Cardiac Arrest*. *Circulation*, 2015. **132**(5): p. 380-7.
8. Cowie, M.R., et al., *Out-of-hospital cardiac arrest: racial differences in outcome in Seattle*. *Am J Public Health*, 1993. **83**(7): p. 955-9.
9. Shah, K.S., A.S. Shah, and R. Bhopal, *Systematic review and meta-analysis of out-of-hospital cardiac arrest and race or ethnicity: black US populations fare worse*. *Eur J Prev Cardiol*, 2014. **21**(5): p. 619-38.
10. Starks, M.A., et al., *Association of Neighborhood Demographics With Out-of-Hospital Cardiac Arrest Treatment and Outcomes: Where You Live May Matter*. *JAMA Cardiol*, 2017. **2**(10): p. 1110-1118.
11. Shuvy, M., et al., *Long-term clinical outcomes and predictors for survivors of out-of-hospital cardiac arrest*. *Resuscitation*, 2017. **112**: p. 59-64.

12. Yeo, I., et al., *Assessment of Hospital Readmission Rates, Risk Factors, and Causes After Cardiac Arrest: Analysis of the US Nationwide Readmissions Database*. JAMA Netw Open, 2019. **2**(9): p. e1912208.
13. Bailey, Z.D., et al., *Structural racism and health inequities in the USA: evidence and interventions*. Lancet, 2017. **389**(10077): p. 1453-1463.
14. Williams, D.R. and C. Collins, *Racial residential segregation: a fundamental cause of racial disparities in health*. Public Health Rep, 2001. **116**(5): p. 404-16.
15. Chambers, B.D., et al., *Using Index of Concentration at the Extremes as Indicators of Structural Racism to Evaluate the Association with Preterm Birth and Infant Mortality-California, 2011-2012*. J Urban Health, 2019. **96**(2): p. 159-170.
16. Feldman, J.M., et al., *Spatial social polarisation: using the Index of Concentration at the Extremes jointly for income and race/ethnicity to analyse risk of hypertension*. J Epidemiol Community Health, 2015. **69**(12): p. 1199-207.
17. Kershaw, K.N. and S.S. Albrecht, *Racial/ethnic residential segregation and cardiovascular disease risk*. Curr Cardiovasc Risk Rep, 2015. **9**(3).
18. Abbott EE, et al., (In Press). *Survival After Out-of-Hospital Cardiac Arrest: The Role of Racial Residential Segregation*. Journal of Urban Health 2022.
19. Shelton, S.K., et al., *Validation of an ICD code for accurately identifying emergency department patients who suffer an out-of-hospital cardiac arrest*. Resuscitation, 2018. **125**: p. 8-11.
20. DeZorzi, C., et al., *Administrative Billing Codes for Identifying Patients With Cardiac Arrest*. J Am Coll Cardiol, 2019. **73**(12): p. 1598-1600.
21. Hennessy, S., et al., *Validation of diagnostic codes for outpatient-originating sudden cardiac death and ventricular arrhythmia in Medicaid and Medicare claims data*. Pharmacoepidemiol Drug Saf, 2010. **19**(6): p. 555-62.

22. De Bruin, M.L., et al., *Hospital discharge diagnoses of ventricular arrhythmias and cardiac arrest were useful for epidemiologic research*. J Clin Epidemiol, 2005. **58**(12): p. 1325-9.
23. Krieger, N., et al., *Local Residential Segregation Matters: Stronger Association of Census Tract Compared to Conventional City-Level Measures with Fatal and Non-Fatal Assaults (Total and Firearm Related), Using the Index of Concentration at the Extremes (ICE) for Racial, Economic, and Racialized Economic Segregation, Massachusetts (US), 1995-2010*. J Urban Health, 2017. **94**(2): p. 244-258.
24. Krieger, N., et al., *Public Health Monitoring of Privilege and Deprivation With the Index of Concentration at the Extremes*. Am J Public Health, 2016. **106**(2): p. 256-63.
25. Krieger, N., et al., *Black carbon exposure, socioeconomic and racial/ethnic spatial polarization, and the Index of Concentration at the Extremes (ICE)*. Health Place, 2015. **34**: p. 215-28.
26. Abbott, E.E.e.a., *Abstract 134: Survival After Out-of-hospital Cardiac Arrest: The Role of Urban-rural Residence and Demographic Factors*. . Circulation, 2020. **142**(Suppl_4): p. p. A134-A134.
27. Westrick, A.C., et al., *Residential segregation and overall survival of women with epithelial ovarian cancer*. Cancer, 2020. **126**(16): p. 3698-3707.
28. Gasparini, A., *Comorbidity: An R package for computing comorbidity scores*. Journal of Open Source Software, 2018. **3**(23) **648**
29. Moore, B.J., et al., *Identifying Increased Risk of Readmission and In-hospital Mortality Using Hospital Administrative Data: The AHRQ Elixhauser Comorbidity Index*. Med Care, 2017. **55**(7): p. 698-705.
30. von Elm, E., et al., *The Strengthening the Reporting of Observational Studies in Epidemiology (STROBE) statement: guidelines for reporting observational studies*. J Clin Epidemiol, 2008. **61**(4): p. 344-9.

31. Chen, C.C., et al., *Spatial Variation and Resuscitation Process Affecting Survival after Out-of-Hospital Cardiac Arrests (OHCA)*. PLoS One, 2015. **10**(12): p. e0144882.
32. Groeneveld, P.W., P.A. Heidenreich, and A.M. Garber, *Racial disparity in cardiac procedures and mortality among long-term survivors of cardiac arrest*. Circulation, 2003. **108**(3): p. 286-91.
33. Groeneveld, P.W., P.A. Heidenreich, and A.M. Garber, *Trends in implantable cardioverter-defibrillator racial disparity: the importance of geography*. J Am Coll Cardiol, 2005. **45**(1): p. 72-8.

Table 1: Medicare Beneficiary OHCA Cohort Characteristics 2013-2015

Figure 1: Kaplan Meier Survival Curve for ICE Race, Income, and Race + Income Models

Figure 2: Univariate and Multivariate ICE Measures Cox Proportional Hazards Model Forest Plot

Supplementary Figure 1: Multivariate ICE Race Cox Proportional Hazards Model Forest Plot (all covariates)

Supplementary Figure 2: Multivariate ICE Income Cox Proportional Hazards Model Forest Plot (all covariates)

Supplementary Figure 3: Multivariate ICE Race + Income Cox Proportional Hazards Model Forest Plot (all covariates)

Table 1: Medicare Beneficiary OHCA Cohort Characteristics 2013-2015

Variable	Overall n (%)	White n (%)	Black n (%)	Other** n (%)
Overall OHCA Cohort Beneficiary Level	29847	23578 (79.0)	4549 (15.2)	1720 (5.8)
Sex				
Female	11978 (40.1)	8844 (73.8)	2464 (20.5)	670 (5.5)
Male	17869 (59.9)	14734 (82.4)	2085 (11.7)	1050 (5.8)
Age Group Category				
65-74 y.	15131 (50.7)	11668 (77.1)	2515 (16.6)	948 (6.3)
75-84 y.	10119 (33.9)	8251 (81.5)	1385 (13.7)	483 (4.8)
85+ y.	4597 (15.4)	3659 (79.6)	649 (14.1)	289 (6.3)
AHRQ Comorbidity Index				
<0	2995 (10.0)	2482 (10.5)	366 (8.0)	147 (8.5)
0	2470 (8.3)	2160 (9.2)	190 (4.2)	120 (7.0)
1-4	1804 (6.0)	1544 (6.5)	162 (3.6)	98 (5.7)
>5	21417 (71.8)	16537 (70.1)	3586 (78.8)	1294 (75.2)
NA	1161 (3.9)	855 (3.6)	245 (5.4)	61 (3.5)
Hospital Length of Stay in Days (Median, IQR)	5.00 (0.00, 11.00)	4.00 (0.00, 11.00)	6.00 (1.00, 14.00)	7.00 (1.00, 15.00)
Cardiac Catheterization at Index Hospitalization (Y or N)				
Cardiac Cath Y	7293 (24.4)	6110 (25.9)	753 (16.6)	430 (25.0)
Cardiac Cath N	22554 (75.6)	17468 (74.1)	3796 (83.4)	1290 (75.0)
Implantable Cardioverter Defibrillator (ICD) at Index Hospitalization (Y or N)				
ICD Y	2688 (9.0)	2241 (9.5)	301 (6.6)	146 (8.5)
ICD N	27159 (91.0)	21337 (90.5)	4248 (93.4)	1574 (91.5)
Variable	Overall n (%)	White n (%)	Black n (%)	Other n (%)
Index Treating Hospital Characteristics (Beneficiary Level)				
Hospital No. of Beds				
<100	4513 (15.1)	3977 (16.9)	375 (8.2)	161 (9.4)
100-399	9394 (31.5)	6901 (29.3)	1959 (43.1)	534 (31.0)
>400	15940 (53.4)	12700 (53.9)	2215 (48.7)	1025 (59.6)
NA				
Hospital Teaching Status				
Major Teaching	4165 (14.0)	2806 (11.9)	1094 (24.0)	265 (15.4)
Minor Teaching	10469 (35.1)	8185 (34.7)	1623 (35.7)	661 (38.4)
Non-Teaching	15213 (51.0)	12587 (53.4)	1832 (40.3)	794 (46.2)
Hospital Ownership Status				
For Profit	4760 (15.9)	3669 (15.6)	773 (17.0)	318 (18.5)
Government (Non-Federal)	3833 (12.8)	2915 (12.4)	685 (15.1)	233 (13.5)
Non-profit	21254 (71.2)	16994 (72.1)	3091 (67.9)	1169 (68.0)
Medical Intensive Care Unit (MICU) Beds (Y or N)				
MICU Beds Y	1948 (6.5)	1674 (7.1)	187 (4.1)	87 (5.1)
MICU Beds N	24013 (80.5)	18928 (80.3)	3739 (82.2)	1346 (78.3)
NA	3886 (13.0)	2976 (12.6)	623 (13.7)	287 (16.7)
Cardiac Intensive Care Beds (CIC) (Y or N)				
CIC Beds Y	11607 (38.9)	9552 (40.5)	1455 (32.0)	600 (34.9)
CIC Beds N	14354 (48.1)	11050 (46.9)	2471 (54.3)	833 (48.4)
NA	3886 (13.0)	2976 (12.6)	623 (13.7)	287 (16.7)
Cardiac Catheterization Capability (Y or N)				
Cardiac Catheterization Y	20262 (67.9)	15882 (67.4)	3193 (70.2)	1187 (69.0)
Cardiac Catheterization N	9585 (32.1)	7696 (32.6)	1356 (29.8)	533 (31.0)
NA				
Outcome	Overall n (%)	Black n (%)	White n (%)	Other n (%)
Alive at 1 year	16129 (54.0)	13187 (55.9)	1978 (43.5)	964 (56.0)

Expired at 3 years	13718 (46.0)	10391 (44.1)	2571 (56.5)	756 (44.0)
Alive at 3 years	12189 (40.8)	10045 (42.6)	1392 (30.6)	752 (43.7)
Expired at 3 years	17658 (59.2)	13533 (57.4)	3157 (69.4)	968 (56.3)

****Other (CMS Defined Racial and Ethnic Categories): Hispanic; Asian/Native Hawaiian, or Pacific Islander; American Indian or Alaska Native**

Figure 1: KM Survival Curves for ICE Measures

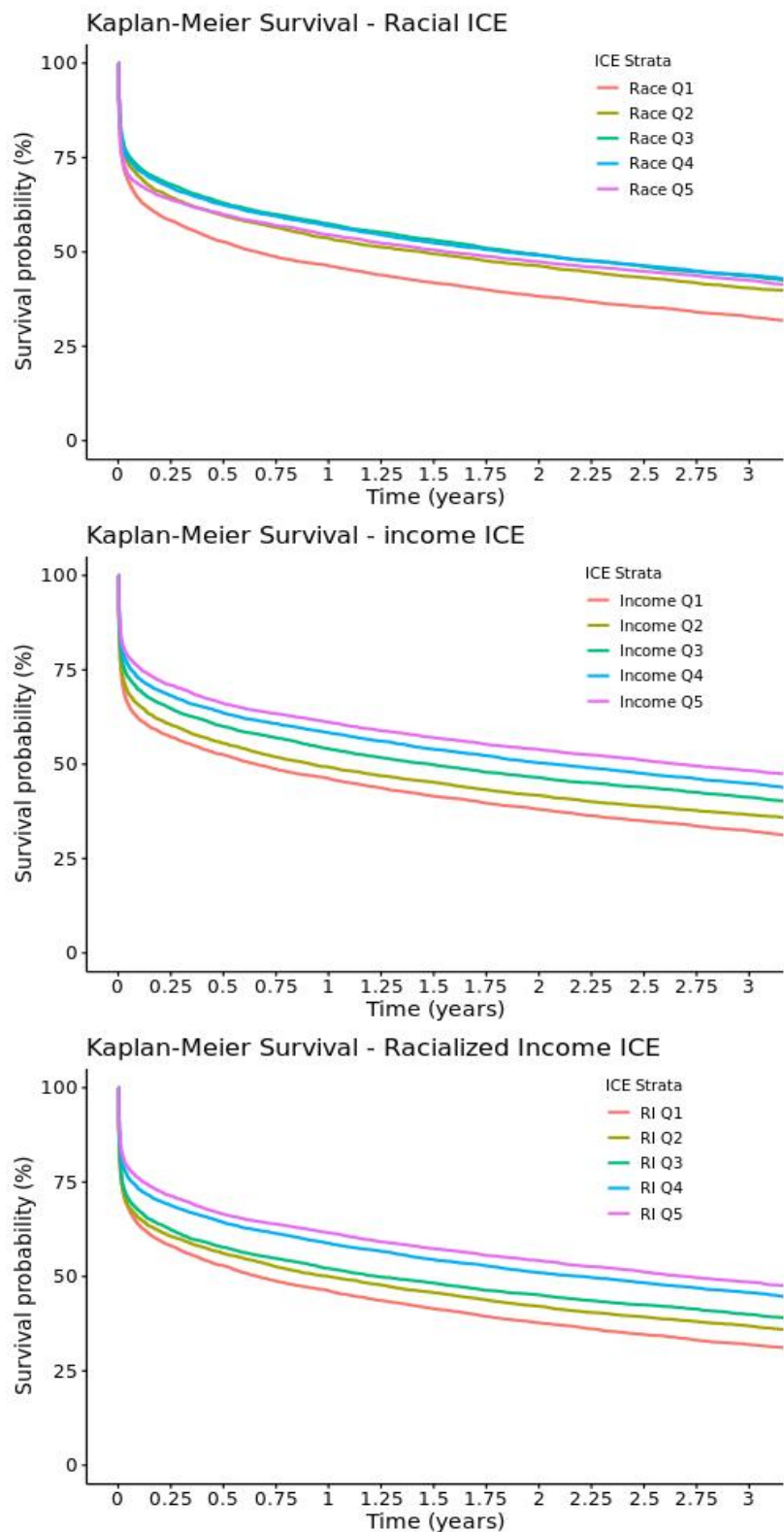


Figure 1A: Kaplan Meier Survival Curve for ICE Measure by Quintile. ICE Race Model Q1 represents most segregated Black and Q5 represents most segregated White. ICE Income Model Q1 represents low income (\leq \$25,000) and Q5 represents high income (\geq \$100,000). ICE Income + Race Measure Model Q1 represents low-income Black and Q5 represents high income White.

Figure 2: Univariate and Multivariate ICE Cox Proportional Hazards Model Forest Plots

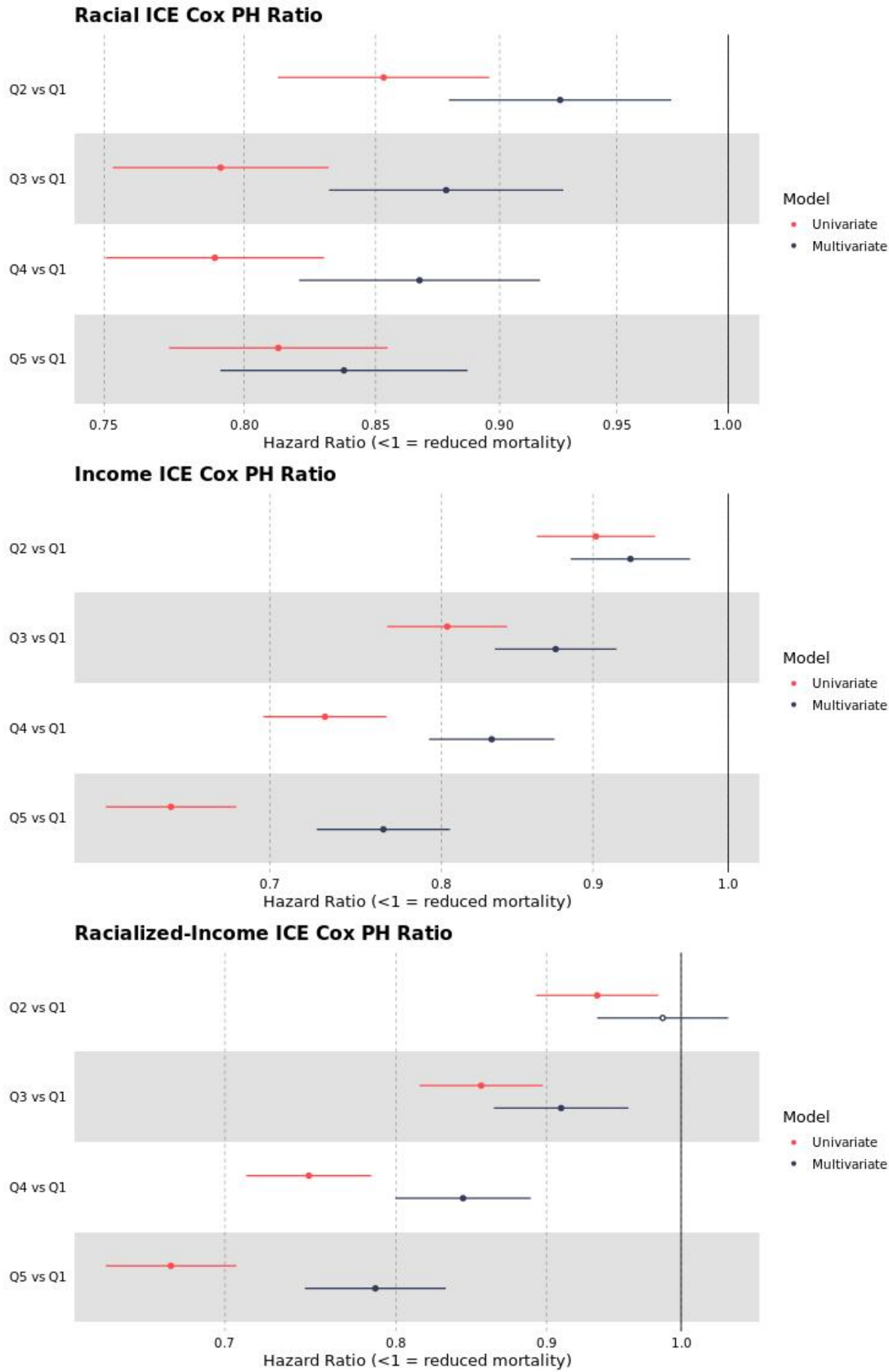
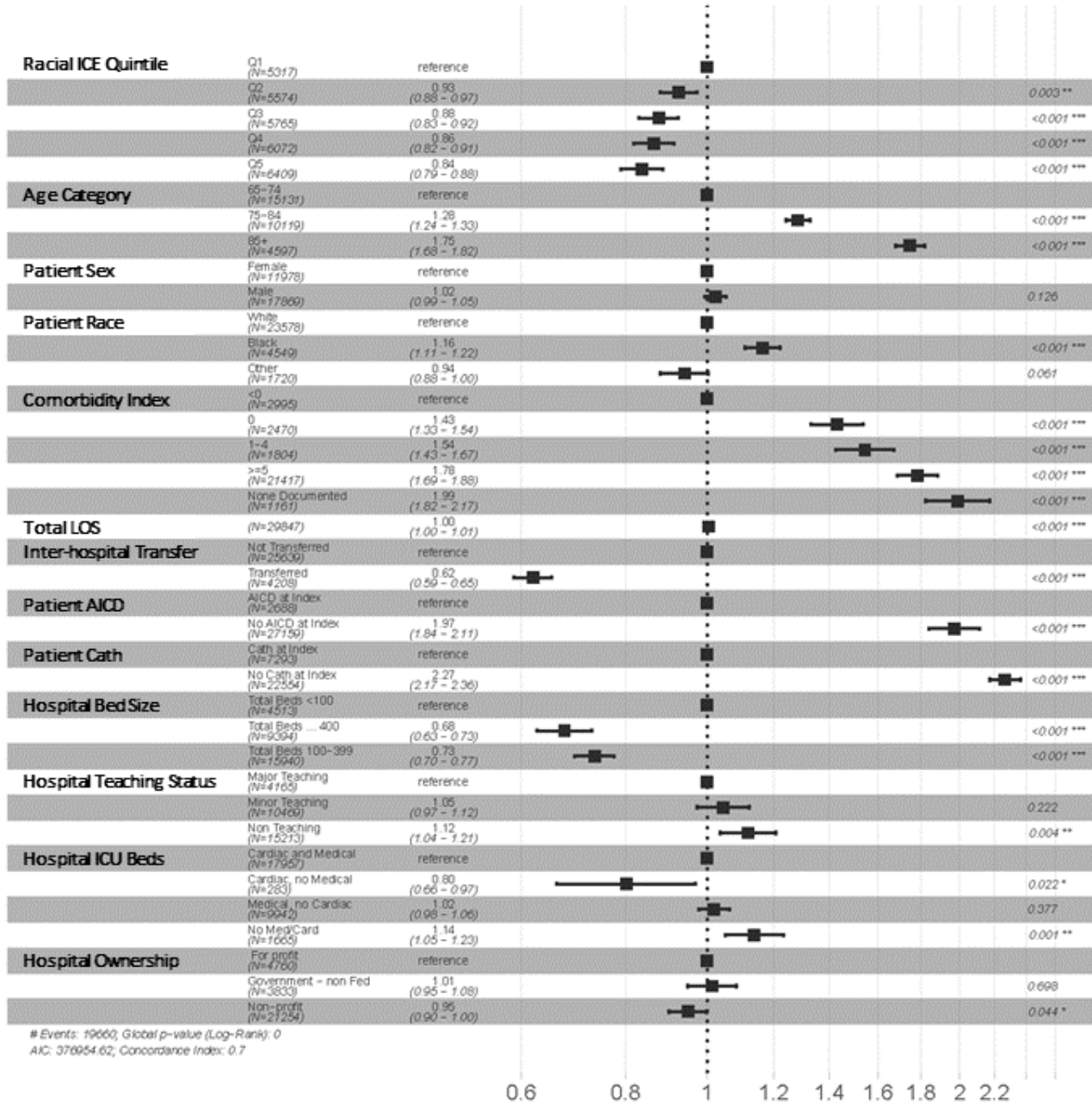


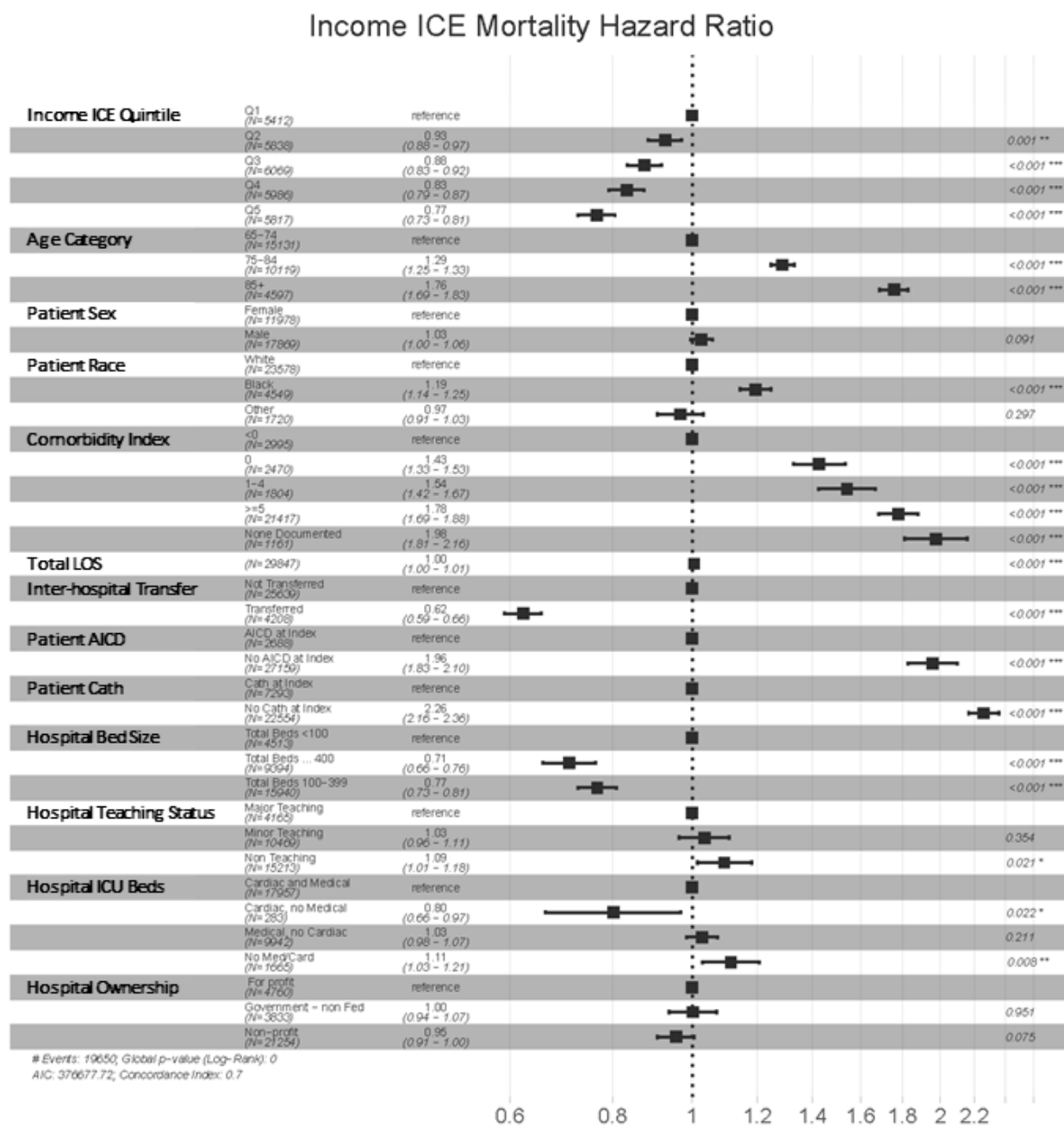
Figure 2: Forest Plots of Cox PH Ratios for Univariate and Multivariable Models all ICE Measures. For **Race Measure** Q1=More Segregated Black (ref), Q5=More segregated White. For **Income Measure** Q1 = low income(ref), Q5 =high income. For **Race + Income (Racialized Income)** ICE Measure Q1=More Segregated Black and low income (ref), Q5=More segregated White and high income.

Supplemental Figure 1: Race ICE Measure Cox PH Multivariable Model Hazard Ratios and 95% Confidence Intervals

Race ICE Mortality Hazard Ratio



Supplemental Figure 2: Income ICE Measure Cox PH Multivariable Model Hazard Ratios and 95% Confidence Intervals



Supplemental Figure 3: Race + Income (racialized income) ICE Measure Cox PH Multivariable Model Hazard Ratios and 95% Confidence Intervals

Racialized Income ICE Mortality Hazard Ratio

