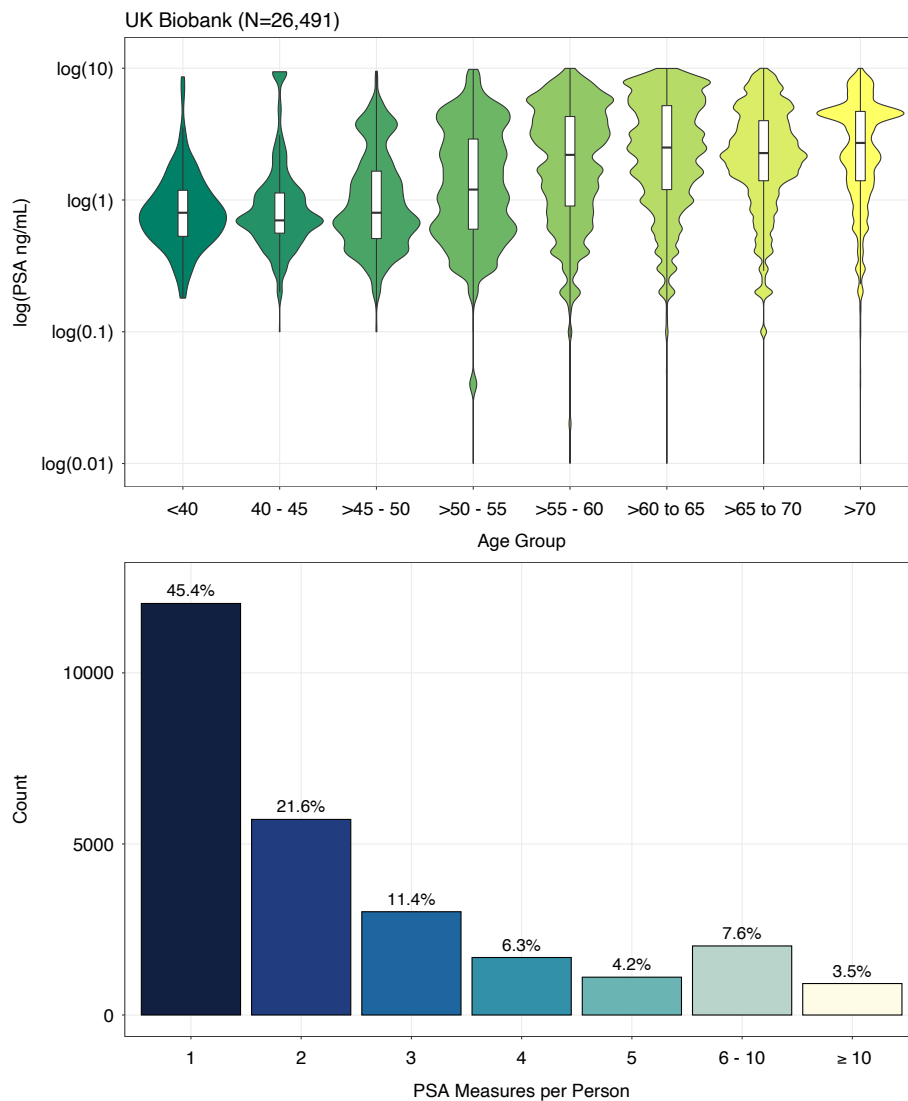
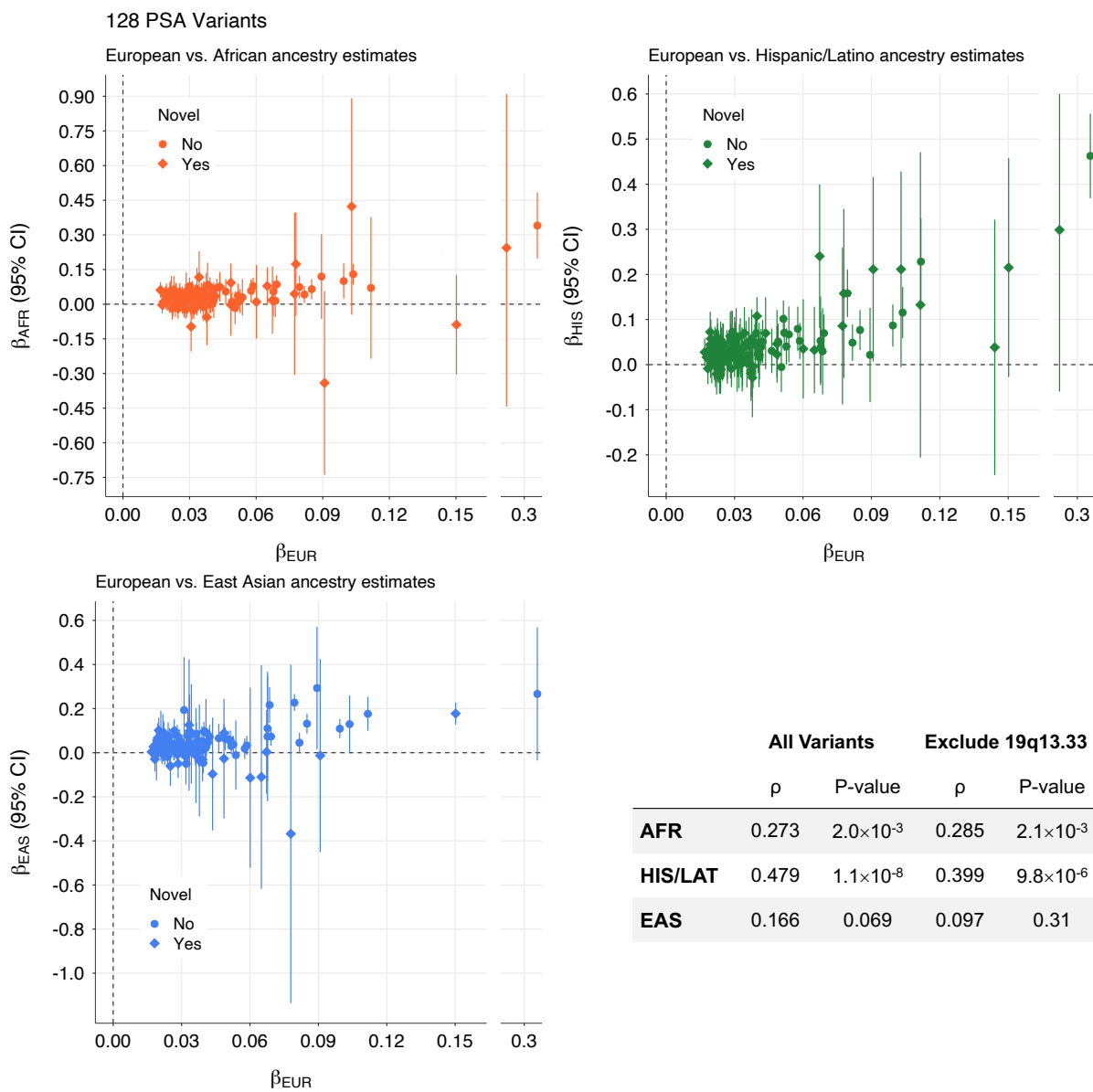


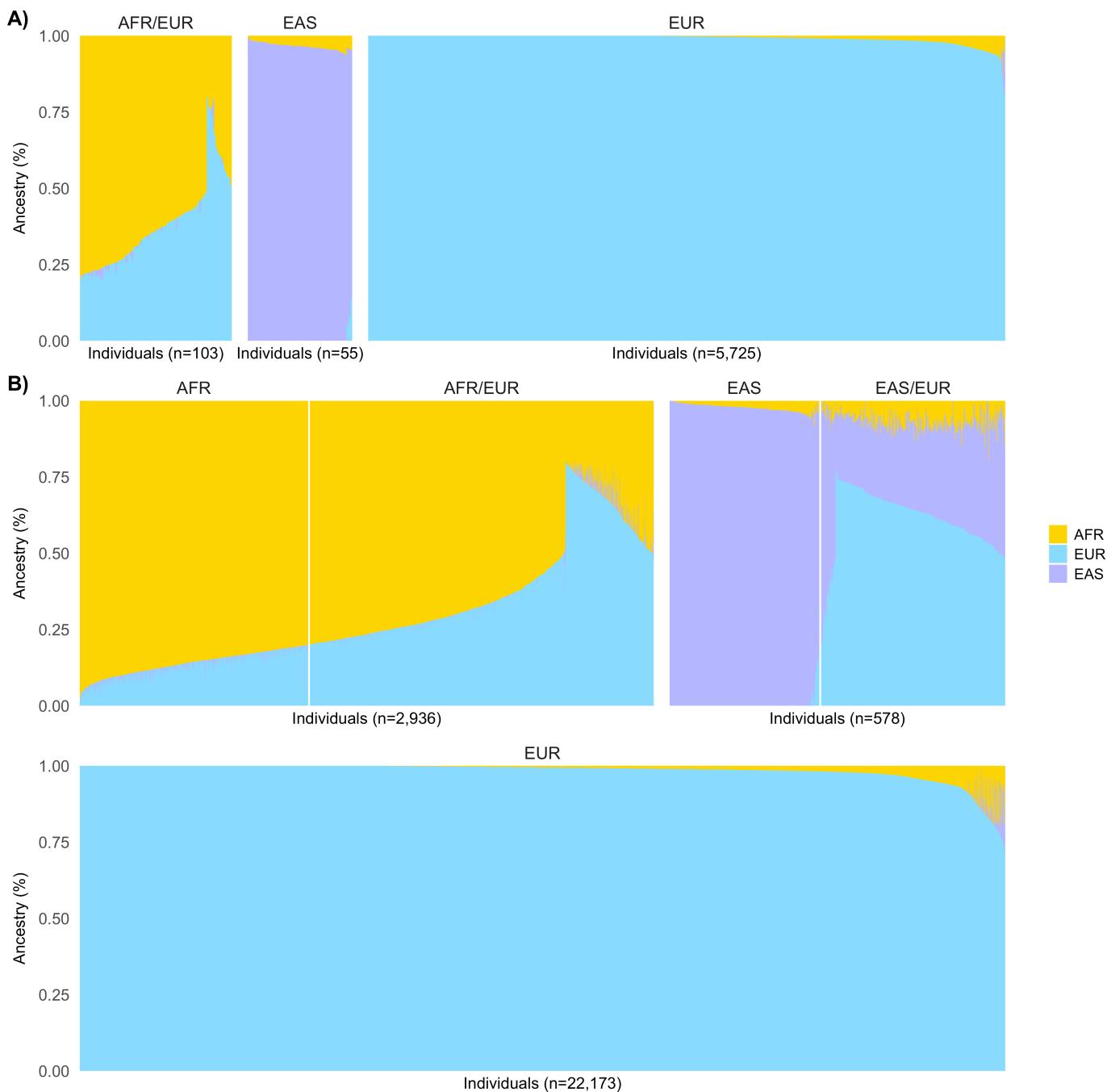
Supplementary Figure 1: Distribution of PSA values and measurements in the European ancestry men from the UK Biobank cohort that were included in the GWAS.



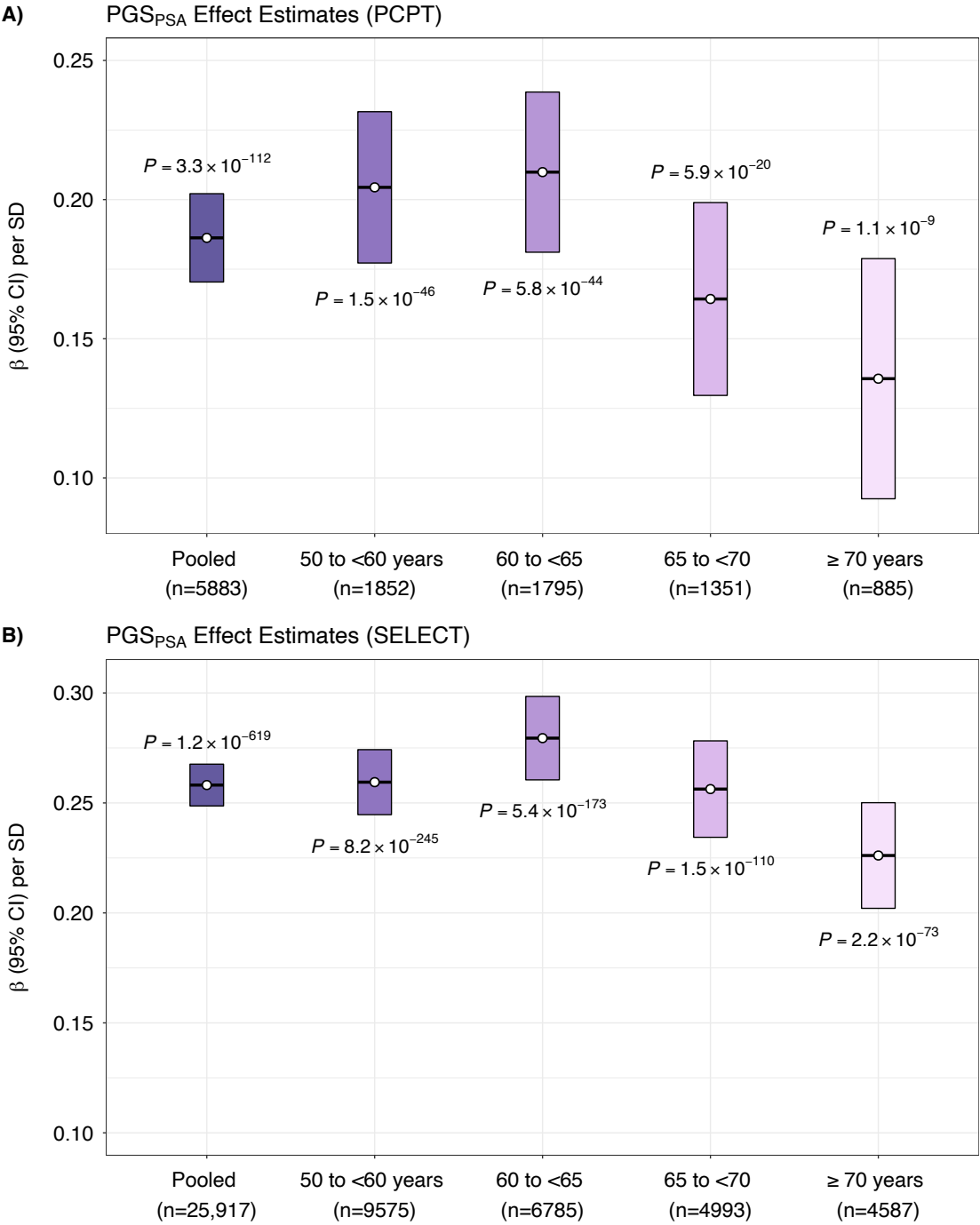
Supplementary Figure 2: Ancestry-specific effect sizes and corresponding correlations for 128 variants associated with PSA levels in men without prostate cancer ($P < 5 \times 10^{-8}$) identified in the multi-ancestry meta-analysis. Correlations between effect sizes (β) were estimated using Spearman's rho (ρ).



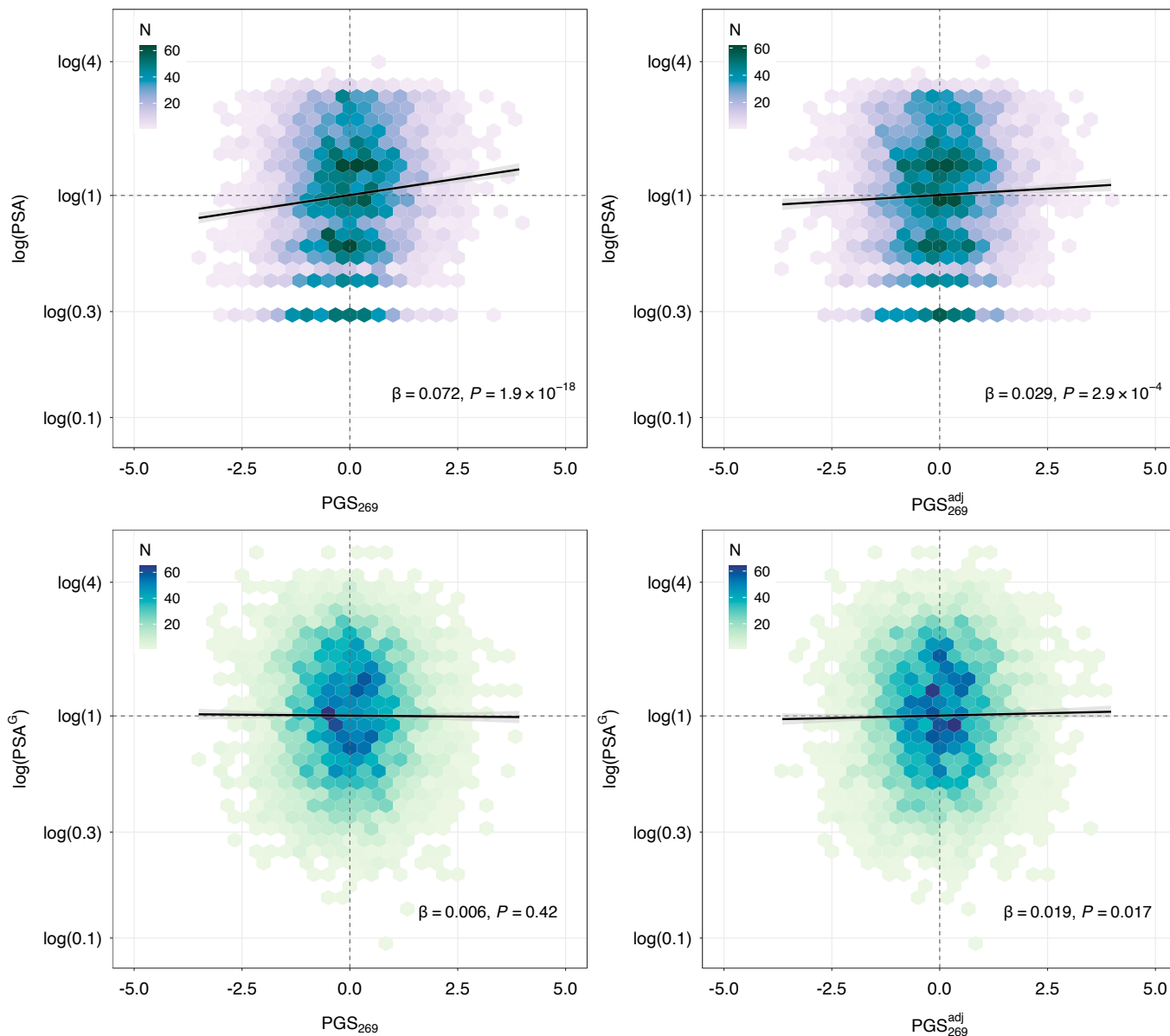
Supplementary Figure 3: Admixture plots visualizing global ancestry proportions for participants in validation cohorts A) Prostate Cancer Prevention Trial (PCPT) and B) Selenium and Vitamin E Cancer Prevention Trial (SELECT), both of which were excluded from the discovery GWAS of PSA levels



Supplementary Figure 4: Performance of PGS_{PSA} was evaluated in the Prostate Cancer Prevention Trial (PCPT) and Selenium and Vitamin E Cancer Prevention Trial (SELECT). Panels A) and B) show effect estimates per standard deviation increase in the standardized PGS_{PSA} on baseline log(PSA) in each trial, overall and stratified by age group.

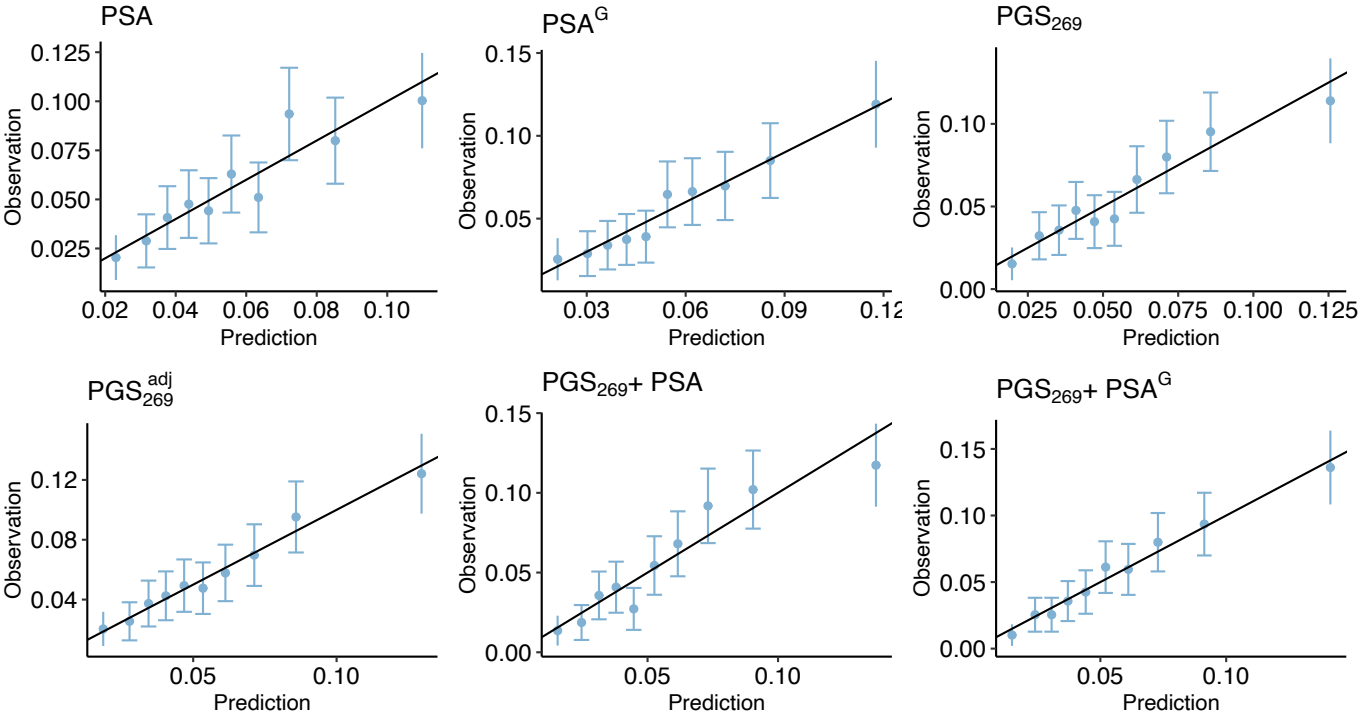


Supplementary Figure 5: Associations with baseline PSA and genetically adjusted baseline PSA in PCPT with the standard prostate cancer polygenic score (PGS₂₆₉) and using weights that have been adjusted for index event bias (PGS₂₆₉^{adj}). Each panel visualizes the regression line of the PGS association, overlaid on individual data points summarized as hexbins.

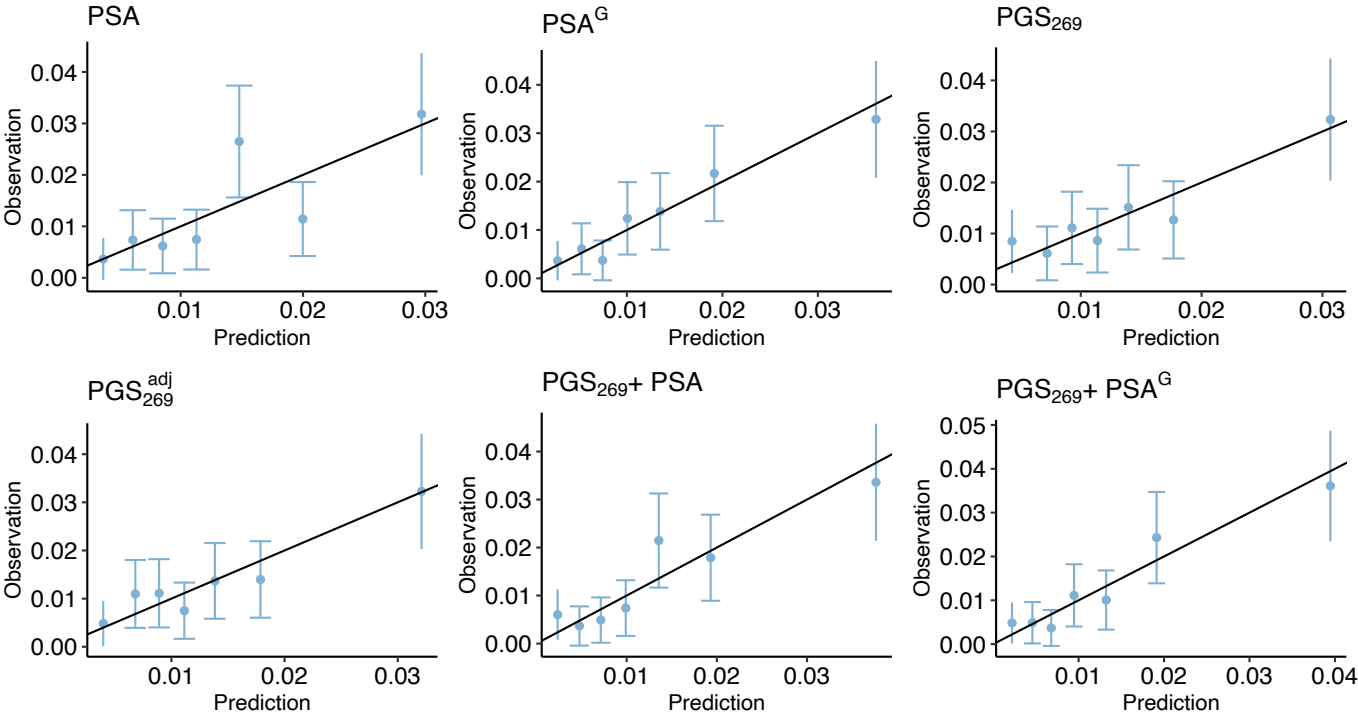


Supplementary Figure 6: Calibration plots for analyses of incident prostate cancer and aggressive prostate cancer in the pooled PCPT population (overall: 335 cases and 5548 controls; aggressive: 75 cases and 5548 controls) and in men of predominantly European ancestry (EUR \geq 0.80; overall: 323 cases and 5402 controls; aggressive: 71 cases and 5402 controls).

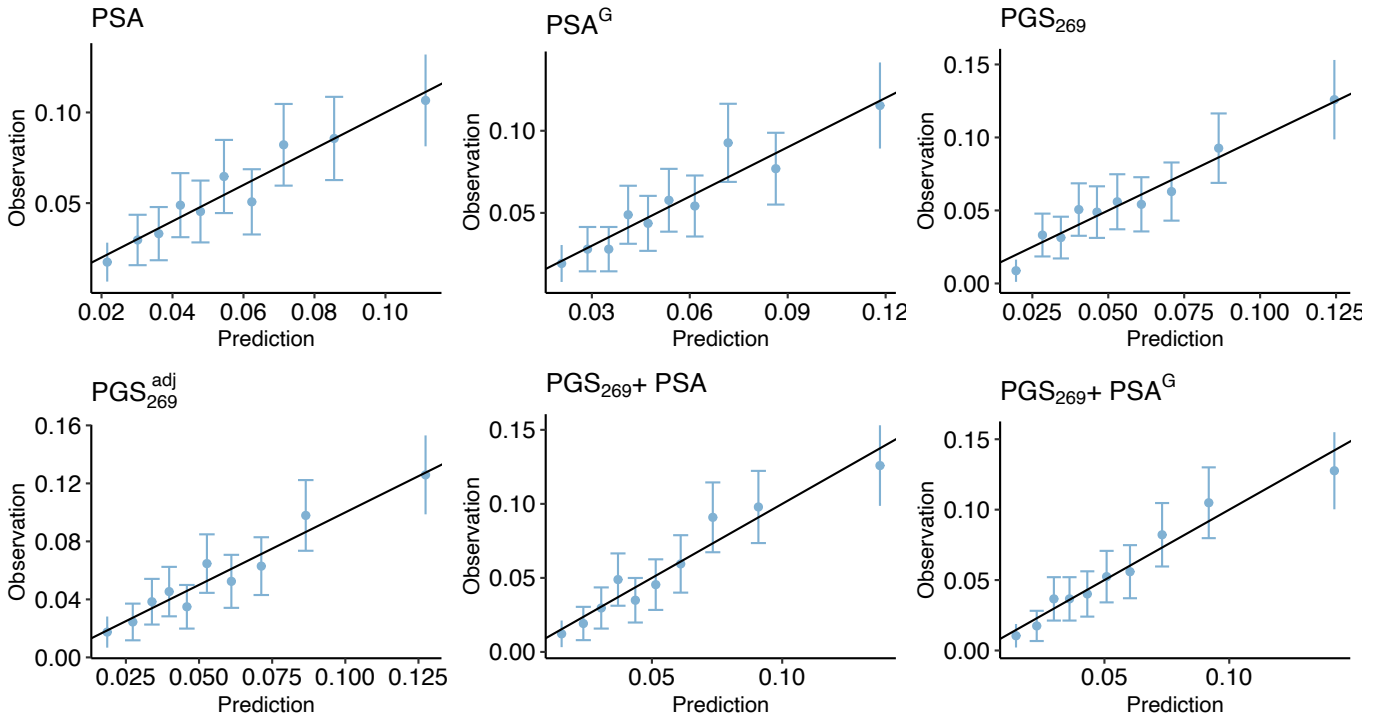
PCPT: Prostate Cancer (Pooled)



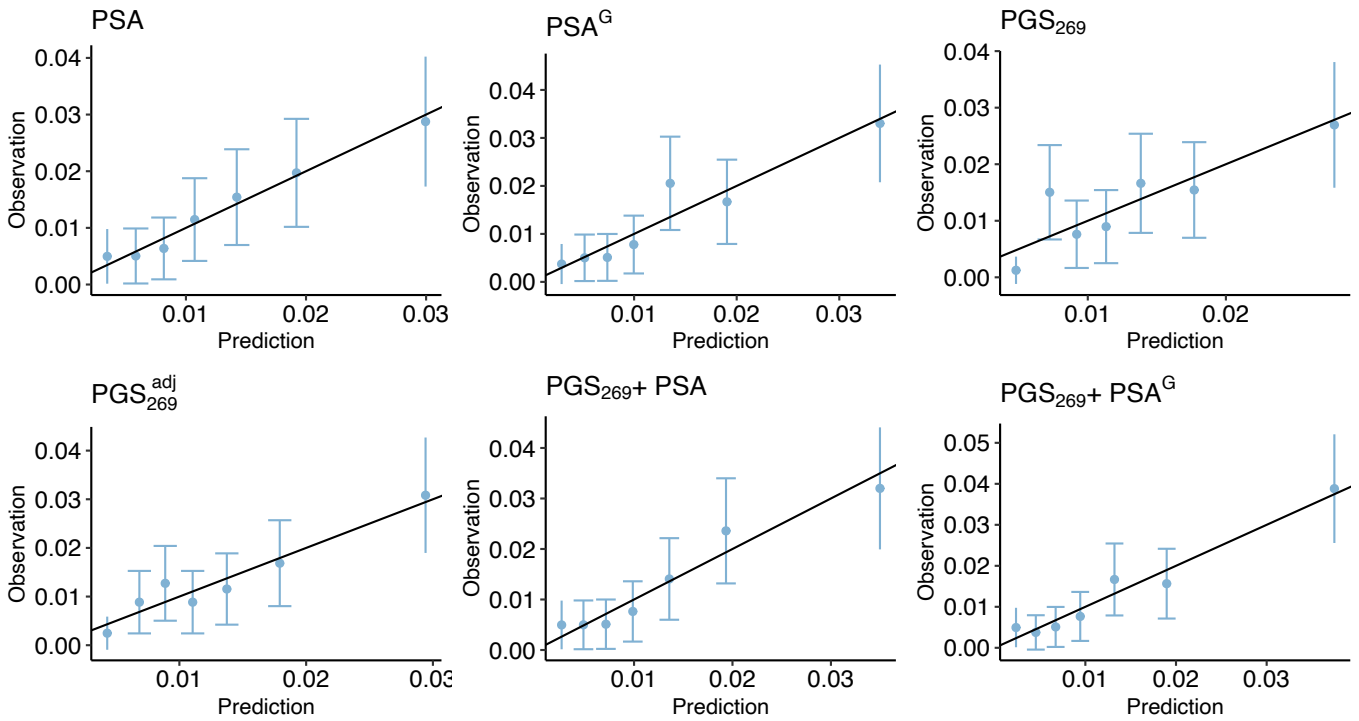
PCPT: Aggressive Prostate Cancer (Pooled)



PCPT: Prostate Cancer (EUR)

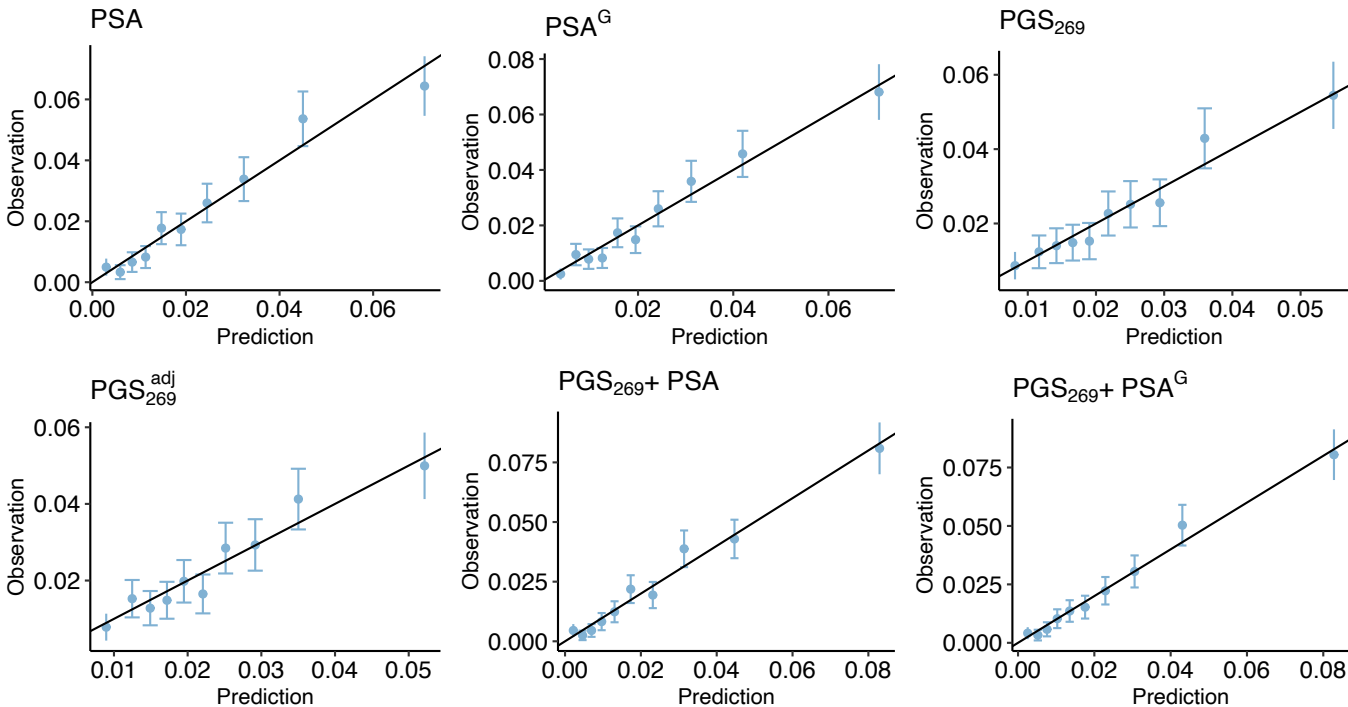


PCPT: Aggressive Prostate Cancer (EUR)

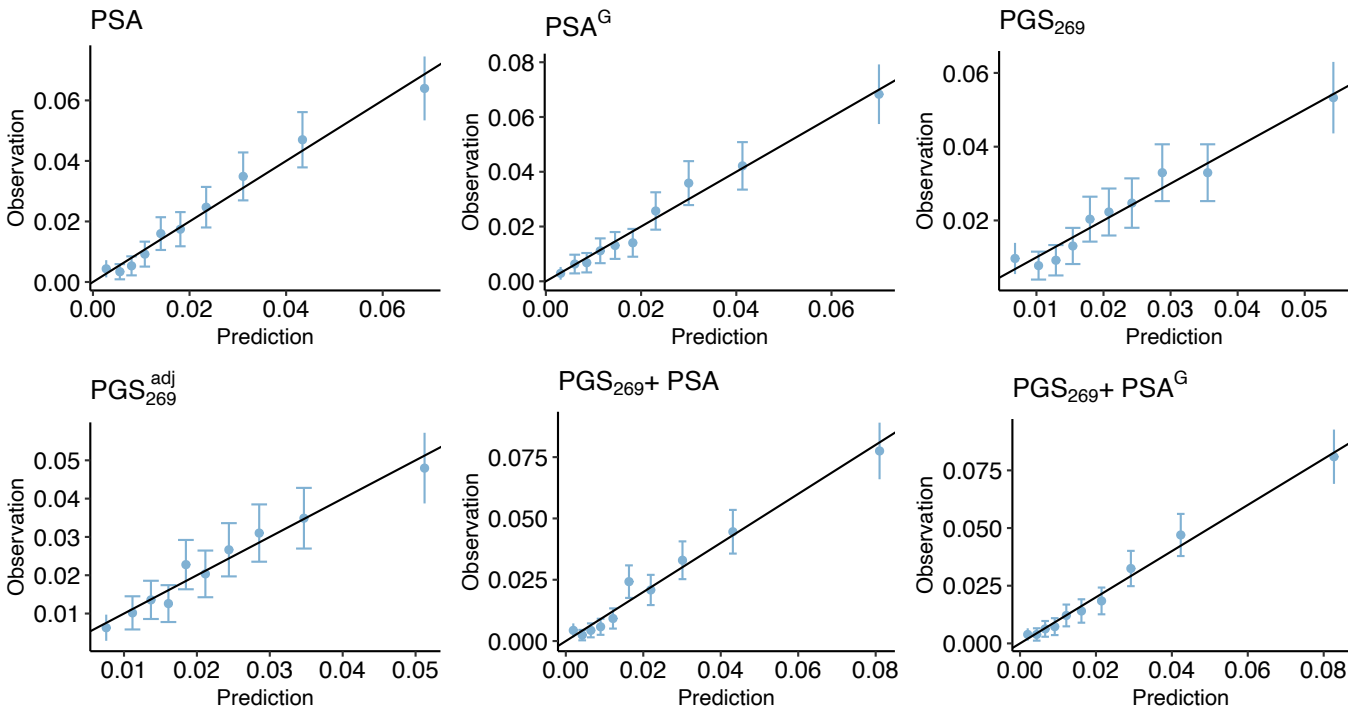


Supplementary Figure 7: Calibration plots for analyses of incident prostate cancer in the pooled SELECT population (572 cases and 23,667 controls) and stratified by ancestry. Predominantly European ancestry (EUR \geq 0.80) subgroup includes 467 cases and 20,173 controls. Pooled African ancestry subgroup includes men of predominantly African ancestry (AFR \geq 0.80) and intermediate African and European ancestry (0.20<AFR/EUR<0.80), for a total of 88 cases and 2733 controls.

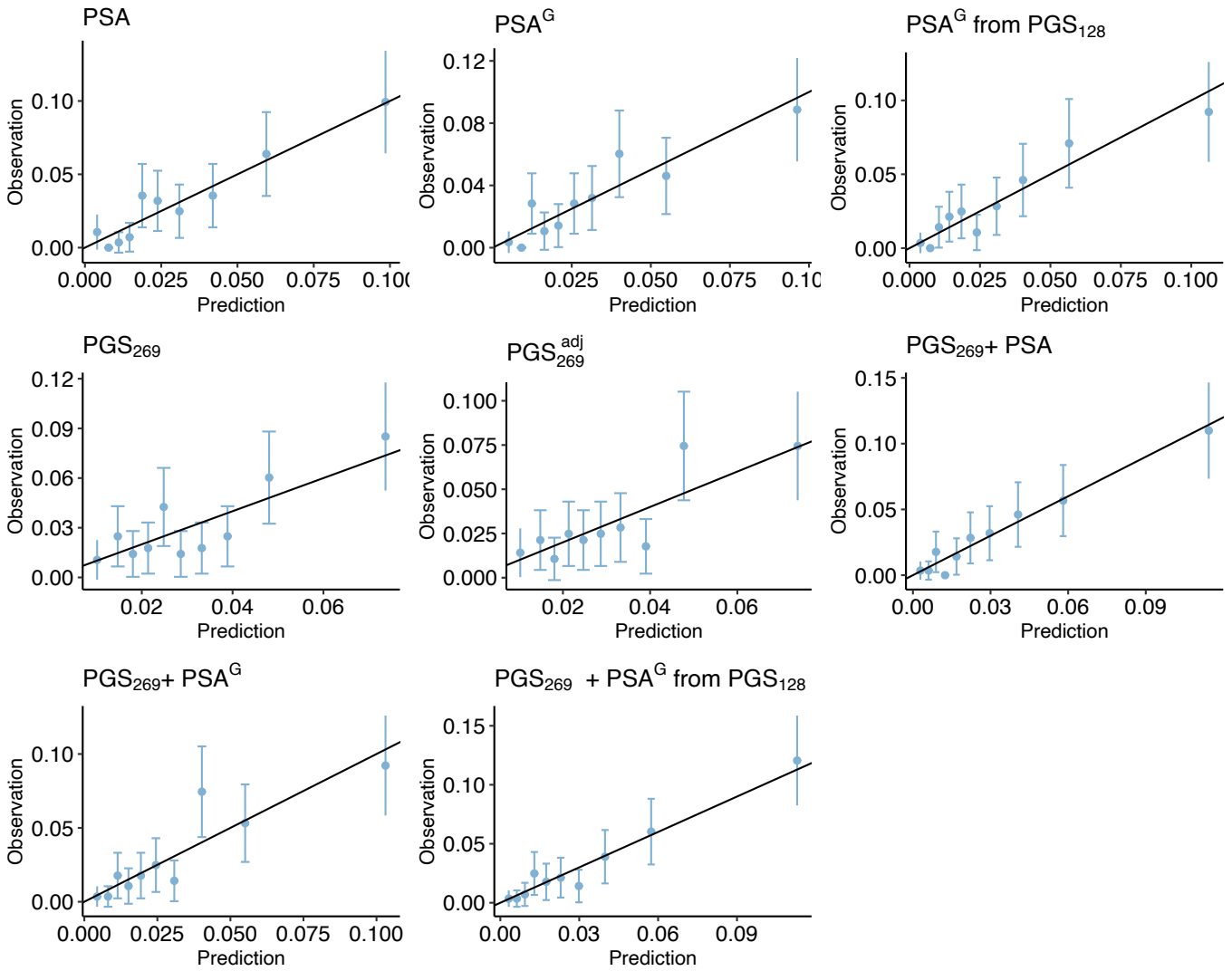
SELECT: Prostate Cancer (Pooled)



SELECT: Prostate Cancer (EUR)

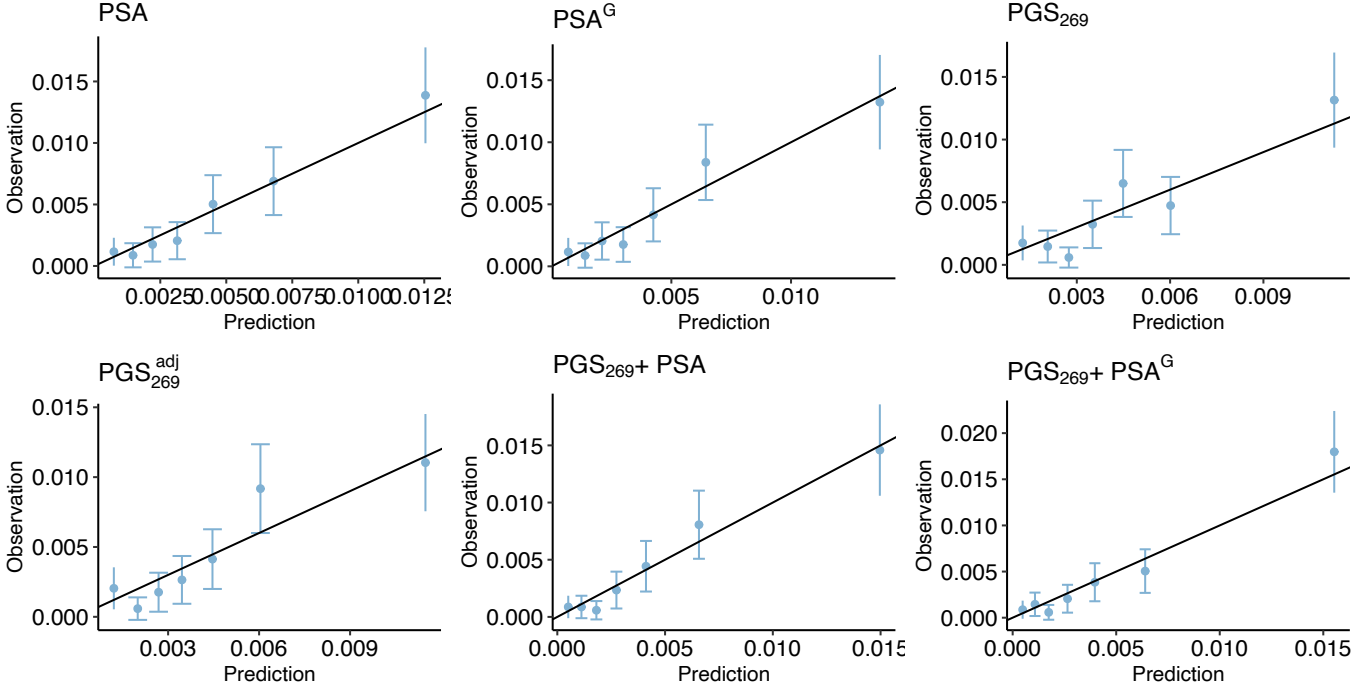


SELECT: Prostate Cancer (AFR pooled)

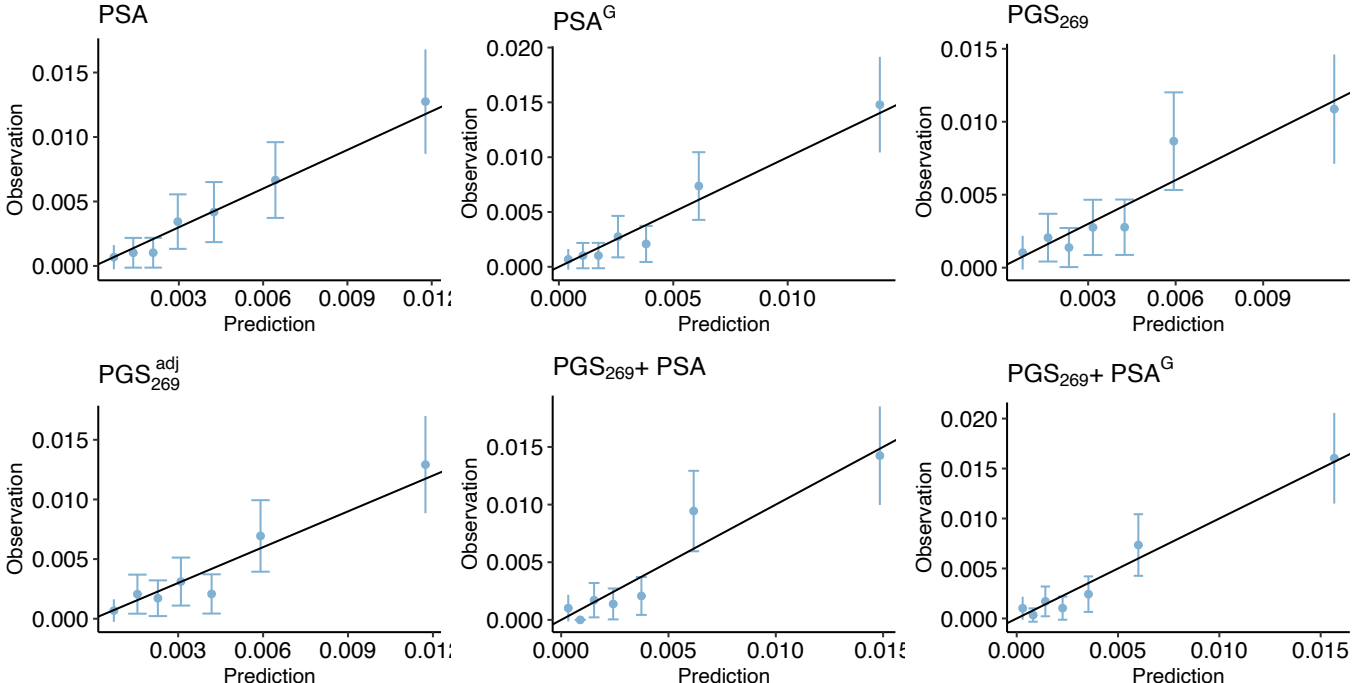


Supplementary Figure 8: Calibration plots for analyses of incident aggressive prostate cancer in the pooled SELECT population (106 cases and 23,667 controls) and stratified by ancestry. Predominantly European ancestry (EUR \geq 0.80) subgroup includes 85 cases and 20,173 controls. Pooled African ancestry subgroup includes men of predominantly African ancestry (AFR \geq 0.80) and intermediate African and European ancestry (0.20 $<$ AFR/EUR $<$ 0.80), for a total of 18 cases and 2733 controls.

SELECT: Aggressive Prostate Cancer (Pooled)



SELECT: Aggressive Prostate Cancer (EUR)



SELECT: Aggressive Prostate Cancer (AFR pooled)

