

Title

Projecting the seasonality of endemic COVID-19

Authors

Jeffrey P. Townsend, Ph.D.^{1,2,3,4*}, April D. Lamb, M.S.⁵, Hayley B. Hassler, M.S.¹, Pratha Sah, Ph.D.⁶, Aia Alvarez Nishio, B.S.⁷, Cameron Nguyen, M.S.⁵, Alexandra D. Tew, B.S.⁵, Alison P. Galvani, Ph.D.⁶, and Alex Dornburg, Ph.D.⁵

Affiliations

¹*Department of Biostatistics, Yale School of Public Health; New Haven, Connecticut, USA*

²*Department of Ecology and Evolutionary Biology, Yale University; New Haven, Connecticut, USA*

³*Program in Computational Biology and Bioinformatics, Yale University; New Haven, Connecticut, USA*

⁴*Program in Microbiology, Yale University; New Haven, Connecticut, USA*

⁵*Department of Bioinformatics and Genomics, University of North Carolina at Charlotte; Charlotte, NC*

⁶*Center for Infectious Disease Modeling and Analysis, Yale University; New Haven, Connecticut 06510, USA*

⁷*Yale College; New Haven, Connecticut 06510, USA*

*Corresponding author

Key Points

Question Under endemic conditions, what are the projected spatiotemporal seasonal surges of COVID-19?

Findings We applied a phylogenetic ancestral and descendent states approach, leveraging long-term data on the incidence of circulating coronaviruses. We found that seasonal surges are expected in or near the winter months; dependent on the specific population center, infections are forecasted to surge in the late fall, winter, or early spring.

Meaning Globally, endemic COVID-19 surges should be expected to occur asynchronously, often coincident with local expected surges of other human-infecting respiratory viruses.

Abstract

Importance Successive waves of infection by SARS-CoV-2 have left little doubt that COVID-19 will transition to an endemic disease, yet the future seasonality of COVID-19 remains one of its most consequential unknowns. Foreknowledge of spatiotemporal surges would have immediate and long-term consequences for medical and public health decision-making.

Objective To estimate the impending endemic seasonality of COVID-19 in temperate population centers via a phylogenetic ancestral and descendent states approach that leverages long-term data on the incidence of circulating coronaviruses.

Design We performed a comparative evolutionary analysis on literature-based monthly verified cases of HCoV-NL63, HCoV-229E, HCoV-HKU1, and HCoV-OC43 infection within populations across the Northern Hemisphere. Ancestral and descendent states analyses on human-infecting coronaviruses provided projections of the impending seasonality of endemic COVID-19.

Setting Quantitative projections of the endemic seasonality of COVID-19 were based on human endemic coronavirus infection incidence data from New York City (USA); Denver (USA); Tampere (Finland); Trøndelag (Norway); Gothenburg (Sweden); Stockholm (Sweden); Amsterdam (Netherlands); Beijing (China); South Korea (Nationwide); Yamagata (Japan); Hong Kong; Nakon Si Thammarat (Thailand); Guangzhou (China); and Sarlahi (Nepal).

Main Outcome(s) and Measure(s) The primary projection was the monthly relative frequency of SARS-CoV-2 infections in each geographic locale. Four secondary outcomes consisted of empirical monthly relative frequencies of the endemic human-infecting coronaviruses HCoV-NL63, -229E, -HKU1, and -OC43.

Results We project asynchronous surges of SARS-CoV-2 across locales in the Northern Hemisphere. In New York City, SARS-CoV-2 incidence is projected in late fall and winter months (Nov.–Jan.), In Tampere, Finland; Yamagata, Japan; and Sarlahi, Nepal incidence peaks in February. Gothenburg and Stockholm in Sweden reach peak incidence between November and February. Guangzhou, China; and South Korea. In Denver, incidence peaks in early Spring (Mar.). In Amsterdam, incidence rises in late fall (Dec.), and declines in late spring (Apr.). In Hong Kong, the projected apex of infection is in late fall (Nov.–Dec.), yet variation in incidence is muted across other seasons. Seasonal projections for Nakhon Si Thammarat, Thailand and for Beijing, China are muted compared to other locations.

Conclusions and Relevance This knowledge of likely spatiotemporal surges of COVID-19 is fundamental to medical preparedness and expansions of public health interventions that anticipate the impending endemicity of this disease and mitigate COVID-19 transmission. These results provide crucial guidance for adaptive public health responses to this disease, and are vital to the long-term mitigation of COVID-19 transmission.

Introduction

The current COVID-19 pandemic has resulted in over 6.5 million deaths worldwide ¹. Public health interventions—especially the closing of schools, universities and banning of large gatherings—were highly effective at reducing transmission at the advent of the pandemic ². Widespread vaccination further altered the course of the pandemic, saving tens of millions of lives globally in the first year alone ³. However, governmental interventions are ebbing internationally. Sustained transmission is predicted to continue into the foreseeable future ^{4,5}, and there is now little doubt that COVID-19 is transitioning into a global endemic disease ⁶. This impending endemicity entails continued surges of infections causing morbidity and mortality that can be mitigated with advance preparation, especially via anticipation of future seasonal infection patterns.

COVID-19 case numbers have fluctuated in different regions and at different times during the last year. However, three challenges that have faced attempts to directly estimate future seasonal infection patterns from COVID-19 data: the global variability in public health measures, evolving pandemic transmission dynamics, and the short duration since SARS-CoV-2 emergence. These factors present too many confounders to yield highly informative studies correlating infection with environmental parameters across locations ^{7,7} such as UV light, humidity, precipitation, and temperature ⁸⁻¹². Without well-estimated correlative associations, parameters for epidemiological modeling studies are lacking. With only a few years of infection data collected in the contexts of highly volatile and heterogeneous interventions, there are qualitative inferences but little year-to-year data that can be appropriately applied to determine the seasonality of the virus ¹³. The absence of annual SARS-CoV-2 infection data without pandemic transmission dynamics or public health interventions has hampered efforts to

determine COVID-19 seasonality and resulted in contradictory estimates of seasonal trends¹⁴⁻¹⁷, and necessitates application of alternate approaches.

One approach to predicting SARS-CoV-2 seasonality relies on comparison to other endemic viruses that follow a similar route of respiratory transmission. These “flu and cold” viruses follow known seasonal patterns of infection that vary across the globe (cites) that offer a possible analogy to the annual variation expected for SARS-CoV-2¹⁷⁻²¹. However, diverse respiratory viruses exhibit divergent patterns of seasonality. For example, rhinovirus infections occur relatively frequently in April through November, compared to respiratory syncytial virus infections, which are relatively more frequent in December, January, and February²². At low evolutionary divergences, there is also variance in seasonal incidence patterns: across locales in Sweden, coronavirus infection by HCoV-OC43 occurs at its highest frequency in December and January, while infections by HCoV-NL63 generally peak in February^{22,23}. This variation is a consequence of evolutionary processes.

The most powerful predictions of the impending endemic seasonality of SARS-CoV-2 will leverage precisely estimated evolutionary divergences between human-infecting coronaviruses, accumulated knowledge of seasonal HCoV coronavirus incidence, and advances in phylogenetic comparative methods that enable the unknown seasonality of SARS-CoV-2 to be estimated. We apply such an approach to the estimation of the seasonality of SARS-CoV-2 infection based on extensive long-term incidence of other coronaviruses (HCoV-OC43, HCoV-NL63, HCoV-HKU1, HCoV-229E) across major population centers. This analysis provides an unconfounded means for estimation of the seasonal force of infection that is not dependent on isolation of interventions or identification of underlying mechanisms. Our resulting projections of endemic SARS-CoV-2 seasonality provide insight into optimal long-term public

policies that can be applied to high-risk periods and to the preparation of healthcare providers for temporally and spatially localized surges.

Materials and Methods

Study Design

We conducted a literature search to identify data on monthly verified cases of HCoV-NL63, HCoV-229E, HCoV-HKU1, and HCoV-OC43 infection within populations across the globe. To infer seasonality of SARS-CoV-2, we applied ancestral and descendent states analyses on reconstructions of the evolutionary history of human-infecting coronaviruses to estimate the expected annual changes in cases at different geographic locales. These analyses provide a global-scale projection of the likely global changes of endemic seasonality for SARS-CoV-2.

Data acquisition

Phylogenetic tree topologies—Phylogenetic relationships of SARS-CoV-2 and the endemic human-infecting coronaviruses were based on data from 58 Alphacoronavirus, 105 Betacoronavirus, 11 Deltacoronavirus, and three Gammacoronavirus as analyzed in Townsend et al.²⁴. These estimates of the phylogenetic topology were consistent with previous hypotheses of evolutionary relationships among coronaviruses^{25–29} and were congruent across multiple methods of inference with strong (100% bootstrap) support for all nodes. Tree topologies were inferred by multiple maximum-likelihood (ML) analyses of the concatenated DNA sequence alignment, and results were robust to alternative phylogenetic likelihood search algorithms—IQ-TREE v2.0.6³⁰ and RAxML v7.2.8³¹—and to branch-length differences arising from different approaches to divergence time estimation—IQ-TREE v2.0.6³⁰, Relative Times

(RelTime; ³²) in MEGA X v10.1.9 ³³ and TreeTime v0.7.6 ³⁴—and to a potential history of recombination among or within genes, through phylogenetic analyses using an alignment of the putative non-recombining blocks ³⁵. All trees from Townsend et al ²⁴ were pruned of SARS-CoV-1 and MERS-CoV branches because temporal trends of infection by these viruses reflect short-term outbreaks and not seasonal endemic circulation.

Seasonal infection data—We conducted a literature search using the PubMed and Google Scholar databases searching for terms related to coronavirus, seasonality, and the known seasonal endemic human-infecting coronaviruses (HCoV-NL63, HCoV-229E, HCoV-HKU1, and HCoV-OC43). Searches were conducted in English between October 2020–August 2021, using the names of each coronavirus lineage as a key term in addition to all combinations of: coronavirus, seasonality, environmental, incidence, infection, prevalence, latitude, temperature, humidity, weather, global, cases—with no language restrictions imposed. Seasonal infection data were extracted from published, peer-reviewed research papers that reported monthly or finer seasonal case data for three or more coronaviruses, spanning at least one year.

Estimating the seasonality of SARS-CoV-2

To estimate the seasonality of infections by SARS-CoV-2, we first extracted the average numbers of cases per month testing positive for HCoV-NL63, -229E, -HKU1, and -OC43 for each location. We scaled these case counts by the annual total to yield proportions of the cases sampled in each month. We then performed a phylogenetically informed ancestral and descendent states analysis, executing Rphylopars v0.2.12 ³⁶ on the monthly proportions of cases to estimate the proportion of yearly infection by SARS-CoV-2 each month for each location,

executing Rphylopars v0.2.12³⁶ on the monthly proportions of cases. This approach takes known trait values (here, monthly proportions of cases for endemic coronaviruses) and applies a Brownian model of trait evolution and a phylogeny to estimate unobserved trait values for a taxon or taxa, providing best linear unbiased predictions that are mathematically equivalent to universal kriging (Gaussian process regression). Phylogenetic ancestral and descendent analyses were repeated across all topologies resulting from different inference approaches (molecular trees, relative phylogenetic chronograms, and non-recombinant alignment) to assess the impact of phylogenetic inference methods on our estimation of seasonality.

Results

Our systematic review regarding seasonal patterns of endemic coronavirus incidence identified 14 studies that met the criteria of providing at least one year of data on at least three circulating human-infecting coronaviruses within a locale. These studies spanned three continents across the Northern Hemisphere (**Table 1**). In temperate regions, endemic coronaviruses typically exhibited pronounced seasonality (**Supplementary Figs. S1–S4**).

From our literature review, we obtained two datasets pertaining to North America. Dataset i was composed of 4215 samples taken from 196 individuals in New York City from October 2016 through April 2018 including children, teenagers, and adults with and without daily contact with children³⁷. To be included in the dataset, cases must have provided nasopharyngeal samples weekly from both nostrils for a minimum of 6 weeks. Dataset ii contained results from 1683 nasopharyngeal washes between December 2004 and November 2005 from The Children's Hospital in Denver that tested negative for all other infectious viruses other than the viruses of interest as part of an ongoing study focusing on viral respiratory infections. Cases generally had

a median age of 15 months, with a history of good health, and presented with symptoms including fever, cough, rhinorrhea, and congestion ³⁸.

We obtained five datasets pertaining to Europe. Dataset iii was composed of 2,084 cases found to be positive for one of the coronaviruses, collected between 1 January 2010 and 31 December 2019 at the Karolinska University Hospital in Stockholm, Sweden ³⁹. Dataset iv was composed of samples collected at St Olavs Hospital in Trondheim, Norway from children under 16 years of age that were exhibiting no symptoms and presenting for elective surgery, or that were presenting with symptoms of respiratory tract infection. ⁴⁰. Dataset v was composed of 7,853 samples collected from November 2006 to October 2009, from 7,220 patients with a median age of 22, ranging from age 0–98 ²². Dataset vi was collected from serum and blood samples of adult males in the HIV-1 uninfected cohort of the Amsterdam Cohort Studies on HIV-1 and AIDS at primarily 3- to 6-month intervals spanning a 35-year period ²⁰. Dataset vii was composed of stool and nasal-swab samples collected from 955 children over 2 years of age presenting with symptoms of acute respiratory infection (545), acute gastroenteritis (172), or symptoms of both (238) in the Department of Pediatrics at Tampere University Hospital in Tampere, Finland between September 2009 and August 2011 ⁴¹.

We obtained six datasets pertaining to Asia. Dataset viii was collected across 36 facilities in Korea by the Korea Influenza and Respiratory Viruses Surveillance System between 2013 and 2015 via throat swabs of 36,915 patients presenting with symptoms of acute respiratory infections ⁴². Dataset ix was composed of results from throat and nasal swabs of 4,342 patients (3,092 aged ≤ 5 years, 767 aged 6–10, 326 aged 11–15, and 104 aged >15 years) presenting with symptoms of respiratory infection in pediatric clinics in Yamagata, Japan spanning January 2010 to December 2013 ⁴³. Dataset x was sourced from 13,048 throat and nasal swabs of adults and

children symptomatic for acute respiratory infection between July 2010 and June 2015 in Guangzhou, China at an approximately 1.5:1 ratio of males to females⁴⁴. Dataset xii was composed of results from weekly nasal swabs of 3693 women enrolled in their second or third trimester of pregnancy, obtained between 2011 and 2014 in the Sarlahi district in Nepal. Participants were enrolled in either their second or third trimester of pregnancy and were monitored until 6 months after giving birth⁴⁵. Dataset xiii was obtained between May 2016 to December 2017 from the bronchoalveolar lavage fluid of 408 16–90 year-old patients being treated for pneumonia or acute respiratory infection at the Central Hospital of Wuhan in Wuhan, China, with a 1.4:1 ratio of males to females among the participants⁴⁶. Dataset xiii was collected between April 2004 and March 2005 from 4,181 nasopharyngeal aspirates taken from patients with a mean age of 22 diagnosed with acute respiratory infection and admitted in one of two hospitals in Hong Kong: China Queen Mary Hospital and Pamela Youde Nethersole Eastern Hospital⁴⁷. Dataset xiv was collected from 1,254 nasopharyngeal aspirates and throat swab samples collected from patients with symptomatic acute respiratory infection in Nakhon Si Thammarat in southern Thailand between July 2009 and January 2011⁴⁸.

For each location, we pruned the phylogeny of major coronavirus lineages from Townsend et al.²⁴ to include only the endemic human-infecting coronaviruses with sample data and SARS-CoV-2 (**Table 1, Fig. 1A**). To generate maximum-likelihood estimates of the spatiotemporal incidences of SARS-CoV-2, we conducted analyses of ancestral and descendent states on the relative monthly incidences for each coronavirus (**Fig. 1B–E**). All four endemic coronaviruses contributed to our projection of the relative monthly incidence of SARS-CoV-2 (**Fig. 1F**). However, the late-diverging HCoV-OC43 and HCoV-HKU1 provide more phylogenetic information than the early-diverging HCoV-NL63 and HCoV-229E. Application of

this evolutionary analysis to Trøndelag, Norway provides projections that late fall and winter months will exhibit significantly higher levels of SARS-CoV-2 incidence than summer and early fall months (**Fig. 1F**).

This lower incidence in the summer and surrounding months is largely generalizable to much of the temperate Northern Hemisphere (**Fig. 2**). Specifically, significantly higher SARS-CoV-2 incidence is projected in late fall and winter months in New York City (**Fig. 2A**). A similar seasonality is projected for Tampere, Finland; Gothenburg and Stockholm in Sweden (**Fig. 2B**); as well as multiple locales in Asia, including Yamagata, Japan; Guangzhou, China; and South Korea (**Fig. 2C**). However, in each Northern Hemisphere continent, there are regional deviations from this seasonal pattern. In Denver, incidence is projected not to rise until the late winter, peaking in early Spring (**Fig. 2A**). Incidence in Amsterdam is similarly projected to decline in late spring. In contrast to Denver, incidence in Amsterdam rises earlier, during the late Fall (**Fig. 2B**). In Asia (**Fig. 2C**), incidence in Sarlahi, Nepal is projected to surge in early winter. In coastal, subtropical Hong Kong, the projected apex is in late fall, but monthly variation in incidence is muted across other seasons. Seasonality for tropical Nakhon Si Thammarat, Thailand is also projected to be muted relative to the temperate Northern Hemisphere locations, and the seasonality of incidence in the megalopolis of Beijing, China appears atypical with no distinct pattern. In all cases, these results were robust to the phylogenetic inference method, underlying molecular dataset, as well as the use of a chronogram or molecular evolutionary tree (**Supplementary Appendix Figs. S5–S8**).

Discussion

Here we analyzed monthly incidence data of the currently circulating endemic coronaviruses HCoV-NL63, -229E, -HKU1, and -OC43 to quantify seasonality of incidence of these viruses in regions that span a broad range of predominantly temperate localities across North America, Europe, and Asia. We conducted ancestral- and descendent-states analyses, projecting the seasonality of SARS-CoV-2 as it becomes endemic. Across much of the temperate Northern Hemisphere, SARS-CoV-2 can be expected to transition to a seasonal pattern of incidence that is high in late fall and winter months relative to late spring and summer. Our expected incidences through time also reveal geographic heterogeneity. This heterogeneity often manifested as a syncopation of the general northern hemispheric trend—a delay in rise to peak incidence, or a prolonged duration of higher levels of incidence relative to other areas. These temporal transmission patterns of SARS-CoV-2 provide fundamental insights for the determination of local public health policies, enabling preparedness and consequent mitigation of seasonal rises in incidence.

Several previous studies have taken on the challenge of predicting seasonality of SARS-CoV-2 based on direct analysis of incidence across seasons during the initial pandemic spread⁴⁹⁻⁵¹. During a zoonotic pandemic, out-of-phase emergence, regional variations in public health intervention, and stochastic pulses of local transmission can obscure the signature of seasonality from surveillance data¹³. Such concerns have made these analyses controversial^{52,53}. To avoid such concerns, our analyses are based on multi-year endemic coronavirus incidence data and are not subject to the biases introduced by pandemic emergence and large-scale public health interventions. Unlike most other studies, our analysis does not force or even suggest any functional form or *a priori* expectation of seasonality. Instead, our results are driven by incidence data from endemic coronaviruses and informed by their shared evolutionary history. Results

from our analysis are broadly consistent with the seasonal incidence trends observed for common human-infecting respiratory viruses in the northern hemisphere¹⁸.

Our results on the seasonality of SARS-CoV-2 impart expected incidence trends under endemic conditions. Through two alternative mechanisms, seasonality during its pandemic phase might be either greater or lesser than that expected during subsequent endemicity. On the one hand, the absence of previous exposure and a corresponding naive immune response that are associated with overall higher transmission in a pandemic have the potential to exacerbate peaks and troughs of transmission. In this context, seasonality can be further amplified by an overwhelmed and lagging public health response. As such, we could observe heightened seasonal differences in incidence relative to those seen during endemic spread, overlaid onto peaks and troughs caused by the out-of-phase emergence of pandemic disease⁵⁴. On the other hand, the mechanisms that are driving the seasonality of coronavirus infections might exert slight influences that are magnified by pathogenic population dynamics year on year⁵⁵. This resonance to convergence could underlie the observed seasonality of endemic coronaviruses (**Supplementary Appendix Figs. S1–S4**). With a smaller forcing factor that is amplified by pathogen population dynamics, we would expect less seasonality for SARS-CoV-2 during pandemic spread than would be seen in its eventual endemic incidence. In this context, it is possible that not enough time has elapsed for endemic seasonality to be fully realized. Regardless of how the seasonal dynamics will manifest during this transition from its pandemic phase, our projections provide the expected endemic seasonality.

It is tempting to compare our results to the history of surges throughout the COVID-19 pandemic thus far. For instance, following the initial outbreak, peaks of COVID-19 deaths in Sweden, where interventions were very limited and kept steady, are consistent with our

projections of a December-February peak of infection. In much of the rest of the world, however, interventions were more extreme and were unsteadily applied. Relaxation of COVID-19 interventions could explain the recent (Summer 2022) surges of deaths in countries such as Japan or irregular patterns in countries such as Australia or New Zealand. Similar irregular patterns can also be found within countries that had variation in interventions such as vaccine uptake or adherence to public health guidelines, including within the United States ^{56,57}. This range of policies and adherence to guidelines confounds direct comparisons ⁵⁸ .

The seasonal coronavirus incidences in each location were collected in studies that monitored disease in distinct time spans and that may have been subject to a number of annually varying factors that can drive seasonal trends of respiratory infections. However, in many cases the incidences were obtained across multiple years of sampling. For example, the Stockholm, Sweden dataset ³⁹ encompasses 2,093 samples spanning a full decade. Consequently, it is unlikely that the month-to-month average incidences of these long-term datasets are substantially affected by anomalous years. Our results project a seasonal rhythm of SARS-CoV-2 that is broadly similar to the trends observed among many major human-infecting respiratory viruses ⁵⁹⁻⁶¹. This well-known seasonal trend toward greater respiratory incidence in the winter has been ascribed to a number of factors: temperature ^{18,62-64}, humidity ⁶⁵⁻⁶⁸, solar ultraviolet radiation ⁶⁹, and host behavior ⁷⁰. This trend is typically considered to be muted in the tropics, and reversed in the Southern Hemisphere ^{61,71}.

Across the datasets assembled for this study, there was also substantial non-temporal variance in patients that were sampled for coronavirus infection. Some datasets were largely or wholly restricted to infants or children ⁴¹, whereas others were cross-population studies aggregating a mix of children, teenagers, and adults ^{22,46}. A forecast of absolute case numbers

would certainly vary between cohorts⁴⁴. However, this variance in sampling should not impact our estimates of relative seasonal infection trends. This invariance in seasonal incidence arises because relative incidence in children is strongly correlated with relative incidence in other subsets of the local population³⁷. Any relative scale will work to reveal when higher or lower relative incidence should be expected. Indeed, the relative seasonal patterns for the long-term circulating endemic coronaviruses from our analysis of these datasets are consistent with expectations determined for other seasonal respiratory viruses^{59–61}.

Expanded global surveillance of endemic seasonal coronavirus incidence—especially in the undersampled tropics and Southern Hemisphere—will enhance our understanding of coronavirus seasonality and facilitate preparedness. Denser sampling will enable more precise regional estimates. Sampling in the tropics would enable testing of the muted seasonality that appears there; sampling in the Southern Hemisphere would enable testing of a hypothesis of inverted seasonality compared to the Northern Hemisphere. This information would strengthen the foundation for forecasting not only endemic coronavirus seasonality, but also the seasonality of deadly emergent coronaviruses such as SARS-CoV-2.

Both public health interventions and evolutionary change impact whether the projected seasonality of SARS-CoV-2 will be observed. Transmission could be dampened by the acceleration of vaccination efforts around the world that, like other interventions, have the potential to disrupt erstwhile seasonality. Alternatively, the emergence of novel variants with elevated transmissibility—such as the Delta or Omicron variants^{72–74}—have the potential to thwart public health efforts and impact seasonal trends. Our results suggest that surges of novel COVID-19 variants will frequently coincide with other seasonal endemic respiratory viruses including influenza and respiratory syncytial virus^{75,76}, potentially overwhelming healthcare

facilities. Our projections affirm the need for systematic, prescient public health interventions that are cognizant of seasonality.

Foreknowledge of seasonality will enable informed, advanced public health messaging regarding seasons of high concern that could help to overcome barriers of nonadherence. Even with widespread vaccination efforts, SARS-CoV-2 is poised to join HCoV-229E, HCoV-NL63, HCoV-OC43, and HCoV-HKU1 as an endemic coronavirus⁷⁷. For epidemiological inferences such as seasonality that require long-term datasets, evolutionary biology can provide the theoretical foundation to deliver swift, quantitative, and rigorous insight into how novel threats to human health may behave. Our approach provides guidance for myriad public health decisions until the pandemic phase of SARS-CoV-2 spread has passed and collection of long-term data on endemic COVID-19 incidence becomes feasible. Moreover, in future research it can be broadly applied to seasonal data from any group of viruses to forecast the endemic traits of any emergent threat.

Acknowledgments

We thank Dan Warren for helpful discussion at the inception of this work.

Authors contributions

JPT and AD conceived the project and designed the study; ADL and CN performed literature review with contributions from AD, ADT, and AAN; ADL, CN, and AAN accessed, processed, and curated seasonality data; ADL performed formal analyses with guidance from AD, JPT, and HBH; AD, ADL, and JPT designed and implemented data visualizations; JPT and AD wrote the manuscript; ADL, ADT, PS, and AAN contributed components of the manuscript;

and all authors reviewed the manuscript before submission. JPT and AD were responsible for the decision to submit the manuscript. All authors had full access to all the data in the study and had final responsibility for the decision to submit for publication. Data was verified by ADL.

Competing Interests

Authors declare that they have no competing interests.

Funding

National Science Foundation of the United States of America RAPID 2031204 (JPT and AD), NSF Expeditions CCF 1918784 (JPT and APG), and support from the University of North Carolina, Charlotte to AD.

Data and materials availability

All data, inferred phylogenetic trees, imputed monthly proportions, and code underlying this study are publicly available on Zenodo: DOI:10.5281/zenodo.5274735.

Supplementary Information

Supplementary Information is available for this paper.

Correspondence and requests for materials should be addressed to Jeffrey P. Townsend.

References

1. Joao BN. Geographic Information Systems and COVID-19: The Johns Hopkins University Dashboard. doi:10.21203/rs.3.rs-15447/v1
2. Brauner JM, Mindermann S, Sharma M, et al. Inferring the effectiveness of government interventions against COVID-19. *Science*. 2021;371(6531). doi:10.1126/science.abd9338
3. Watson OJ, Barnsley G, Toor J, Hogan AB, Winskill P, Ghani AC. Global impact of the first year of COVID-19 vaccination: a mathematical modelling study. *Lancet Infect Dis*. 2022;22(9):1293-1302.
4. Kissler SM, Tedijanto C, Goldstein E, Grad YH, Lipsitch M. Projecting the transmission dynamics of SARS-CoV-2 through the postpandemic period. *Science*. 2020;368(6493):860-868.
5. World Health Organization. Coronavirus disease (COVID-19): situation report, 148. Published online June 16, 2020. Accessed February 21, 2022. <https://apps.who.int/iris/handle/10665/332551>
6. Phillips N. The coronavirus is here to stay — here's what that means. *Nature*. 2021;590(7846):382-384. doi:10.1038/d41586-021-00396-2
7. Carlson CJ, Gomez ACR, Bansal S, Ryan SJ. Misconceptions about weather and seasonality must not misguide COVID-19 response. *Nature Communications*. 2020;11(1). doi:10.1038/s41467-020-18150-z
8. Liu X, Huang J, Li C, et al. The role of seasonality in the spread of COVID-19 pandemic. *Environ Res*. 2021;195:110874.
9. Merow C, Urban MC. Seasonality and uncertainty in global COVID-19 growth rates. *Proc Natl Acad Sci U S A*. 2020;117(44):27456-27464.
10. Chen S, Prettner K, Kuhn M, et al. Climate and the spread of COVID-19. *Sci Rep*. 2021;11(1):9042.
11. Rasul A, Balzter H. The Role of Climate in the Spread of COVID-19 in Different Latitudes across the World. *COVID*. 2022;2(9):1183-1192. doi:10.3390/covid2090085
12. Kubota Y, Shiono T, Kusumoto B, Fujinuma J. Multiple drivers of the COVID-19 spread: The roles of climate, international mobility, and region-specific conditions. *PLoS One*. 2020;15(9):e0239385.
13. Tobias A, Madaniyazi L, Ng CFS, Seposo X, Hashizume M. Can SARS-CoV-2 Global Seasonality be Determined After One Year of Pandemic? *Environ Epidemiol*. 2021;5(2):e146.
14. Jamil T, Alam I, Gojobori T, Duarte CM. No Evidence for Temperature-Dependence of the

- COVID-19 Epidemic. *Front Public Health*. 2020;8:436.
15. Rouen A, Adda J, Roy O, Rogers E, Lévy P. COVID-19: relationship between atmospheric temperature and daily new cases growth rate. *Epidemiol Infect*. 2020;148:e184.
 16. Smit A, Fitchett J, Engelbrecht F, Scholes R, Dzhivhuho G, Sweijd N. Winter is Coming: A Southern Hemisphere Perspective of the Environmental Drivers of SARS-CoV-2 and the Potential Seasonality of COVID-19. doi:10.20944/preprints202007.0456.v1
 17. Yap TF, Liu Z, Shveda RA, Preston DJ. A predictive model of the temperature-dependent inactivation of coronaviruses. *Appl Phys Lett*. 2020;117(6):060601.
 18. Li Y, Wang X, Nair H. Global Seasonality of Human Seasonal Coronaviruses: A Clue for Postpandemic Circulating Season of Severe Acute Respiratory Syndrome Coronavirus 2? *The Journal of Infectious Diseases*. 2020;222(7):1090-1097. doi:10.1093/infdis/jiaa436
 19. Lagacé-Wiens P, Bullard J, Cole R, Van Caesele P. Seasonality of coronaviruses and other respiratory viruses in Canada: Implications for COVID-19. *Can Commun Dis Rep*. 2021;47(3):132-138.
 20. Edridge AWD, Kaczorowska J, Hoste ACR, et al. Seasonal coronavirus protective immunity is short-lasting. *Nat Med*. 2020;26(11):1691-1693.
 21. Aldridge RW, Lewer D, Beale S, et al. Seasonality and immunity to laboratory-confirmed seasonal coronaviruses (HCoV-NL63, HCoV-OC43, and HCoV-229E): results from the Flu Watch cohort study. *Wellcome Open Res*. 2020;5:52.
 22. Brittain-Long R, Andersson LM, Olofsson S, Lindh M, Westin J. Seasonal variations of 15 respiratory agents illustrated by the application of a multiplex polymerase chain reaction assay. *Scand J Infect Dis*. 2012;44(1):9-17.
 23. Dyrdak R, Hodcroft EB, Wahlund M, Neher RA, Albert J. Interactions between seasonal human coronaviruses and implications for the SARS-CoV-2 pandemic: A retrospective study in Stockholm, Sweden, 2009-2020. *J Clin Virol*. 2021;136:104754.
 24. Townsend JP, Hassler HB, Wang Z, et al. The durability of immunity against reinfection by SARS-CoV-2: a comparative evolutionary study. *The Lancet Microbe*. 2021;2(12):e666-e675.
 25. Woo PCY, Lau SKP, Lam CSF, et al. Discovery of seven novel Mammalian and avian coronaviruses in the genus deltacoronavirus supports bat coronaviruses as the gene source of alphacoronavirus and betacoronavirus and avian coronaviruses as the gene source of gammacoronavirus and deltacoronavirus. *J Virol*. 2012;86(7):3995-4008.
 26. Fu X, Fang B, Liu Y, et al. Newly emerged porcine enteric alphacoronavirus in southern China: Identification, origin and evolutionary history analysis. *Infect Genet Evol*. 2018;62:179-187.

27. Pfefferle S, Oppong S, Drexler JF, et al. Distant relatives of severe acute respiratory syndrome coronavirus and close relatives of human coronavirus 229E in bats, Ghana. *Emerg Infect Dis*. 2009;15(9):1377-1384.
28. Sipulwa LA, Ongus JR, Coldren RL, Bulimo WD. Molecular characterization of human coronaviruses and their circulation dynamics in Kenya, 2009–2012. *Virology*. 2016;13(1):18.
29. Coronaviridae Study Group of the International Committee on Taxonomy of Viruses. The species Severe acute respiratory syndrome-related coronavirus: classifying 2019-nCoV and naming it SARS-CoV-2. *Nat Microbiol*. 2020;5(4):536-544.
30. Minh BQ, Schmidt HA, Chernomor O, et al. IQ-TREE 2: New Models and Efficient Methods for Phylogenetic Inference in the Genomic Era. *Mol Biol Evol*. 2020;37(5):1530-1534.
31. Stamatakis A. RAxML version 8: a tool for phylogenetic analysis and post-analysis of large phylogenies. *Bioinformatics*. 2014;30(9):1312-1313.
32. Tamura K, Battistuzzi FU, Billings-Ross P, Murillo O, Filipowski A, Kumar S. Estimating divergence times in large molecular phylogenies. *Proc Natl Acad Sci U S A*. 2012;109(47):19333-19338.
33. Kumar S, Stecher G, Li M, Knyaz C, Tamura K. MEGA X: Molecular Evolutionary Genetics Analysis across Computing Platforms. *Mol Biol Evol*. 2018;35(6):1547-1549.
34. Sagulenko P, Puller V, Neher RA. TreeTime: Maximum-likelihood phylodynamic analysis. *Virus Evol*. 2018;4(1):vex042.
35. Boni MF, Lemey P, Jiang X, et al. Evolutionary origins of the SARS-CoV-2 sarbecovirus lineage responsible for the COVID-19 pandemic. *bioRxiv*. Published online March 31, 2020:2020.03.30.015008. doi:10.1101/2020.03.30.015008
36. Goolsby EW, Bruggeman J, Ané C. Rphylopar: fast multivariate phylogenetic comparative methods for missing data and within-species variation. Fitzjohn R, ed. *Methods Ecol Evol*. 2017;8(1):22-27.
37. Galanti M, Birger R, Ud-Dean M, et al. Longitudinal active sampling for respiratory viral infections across age groups. *Influenza Other Respi Viruses*. 2019;13(3):226-232.
38. Dominguez SR, Robinson CC, Holmes KV. Detection of four human coronaviruses in respiratory infections in children: a one-year study in Colorado. *J Med Virol*. 2009;81(9):1597-1604.
39. Neher RA, Dyrda R, Druelle V, Hodcroft EB, Albert J. Potential impact of seasonal forcing on a SARS-CoV-2 pandemic. *Swiss Med Wkly*. 2020;150:w20224.
40. Heimdal I, Moe N, Krokstad S, et al. Human Coronavirus in Hospitalized Children With Respiratory Tract Infections: A 9-Year Population-Based Study From Norway. *J Infect Dis*.

2019;219(8):1198-1206.

41. Paloniemi M, Lappalainen S, Vesikari T. Commonly circulating human coronaviruses do not have a significant role in the etiology of gastrointestinal infections in hospitalized children. *J Clin Virol*. 2015;62:114-117.
42. Kim JM, Jung HD, Cheong HM, et al. Nation-wide surveillance of human acute respiratory virus infections between 2013 and 2015 in Korea. *J Med Virol*. 2018;90(7):1177-1183.
43. Matoba Y, Abiko C, Ikeda T, et al. Detection of the human coronavirus 229E, HKU1, NL63, and OC43 between 2010 and 2013 in Yamagata, Japan. *Jpn J Infect Dis*. 2015;68(2):138-141.
44. Zhang SF, Tuo JL, Huang XB, et al. Epidemiology characteristics of human coronaviruses in patients with respiratory infection symptoms and phylogenetic analysis of HCoV-OC43 during 2010-2015 in Guangzhou. *PLoS One*. 2018;13(1):e0191789.
45. Uddin SMI, Englund JA, Kuypers JY, et al. Burden and Risk Factors for Coronavirus Infections in Infants in Rural Nepal. *Clin Infect Dis*. 2018;67(10):1507-1514.
46. Shi M, Zhao S, Yu B, et al. Total infectome characterization of respiratory infections in pre-COVID-19 Wuhan, China. *PLoS Pathog*. 2022;18(2):e1010259.
47. Lau SKP, Woo PCY, Yip CCY, et al. Coronavirus HKU1 and other coronavirus infections in Hong Kong. *J Clin Microbiol*. 2006;44(6):2063-2071.
48. Suwannakarn K, Chieochansin T, Vichiwattana P, Korkong S, Theamboonlers A, Poovorawan Y. Prevalence and genetic characterization of human coronaviruses in southern Thailand from July 2009 to January 2011. *Southeast Asian J Trop Med Public Health*. 2014;45(2):326-336.
49. Araújo MB, Naimi B. Spread of SARS-CoV-2 Coronavirus likely constrained by climate. doi:10.1101/2020.03.12.20034728
50. Bajaj P, Arya PC. Evolution and spread of SARS-CoV-2 likely to be affected by climate. doi:10.1101/2020.06.18.147074
51. Baker RE, Yang W, Vecchi GA, Metcalf CJE, Grenfell BT. Assessing the influence of climate on wintertime SARS-CoV-2 outbreaks. *Nat Commun*. 2021;12(1):846.
52. Carlson CJ, Chipperfield JD, Benito BM, Telford RJ, O'Hara RB. Species distribution models are inappropriate for COVID-19. *Nat Ecol Evol*. 2020;4(6):770-771.
53. Carlson CJ, Chipperfield JD, Benito BM, Telford RJ, O'Hara RB. Don't gamble the COVID-19 response on ecological hypotheses. *Nature Ecology & Evolution*. 2020;4(9):1155-1155. doi:10.1038/s41559-020-1279-2
54. Lewnard JA, Townsend JP. Climatic and evolutionary drivers of phase shifts in the plague

- epidemics of colonial India. *Proc Natl Acad Sci U S A*. 2016;113(51):14601-14608.
55. Katriel G, Stone L. Attack rates of seasonal epidemics. *Math Biosci*. 2012;235(1):56-65.
 56. Kiviniemi MT, Orom H, Hay JL, Waters EA. Prevention is political: political party affiliation predicts perceived risk and prevention behaviors for COVID-19. *BMC Public Health*. 2022;22(1):298.
 57. Gao J, Radford BJ. Death by political party: The relationship between COVID-19 deaths and political party affiliation in the United States. *World Medical & Health Policy*. Published online 2021. doi:10.1002/wmh3.435
 58. Ficetola GF, Rubolini D. Containment measures limit environmental effects on COVID-19 early outbreak dynamics. *Sci Total Environ*. 2021;761:144432.
 59. Tamerius J, Nelson MI, Zhou SZ, Viboud C, Miller MA, Alonso WJ. Global Influenza Seasonality: Reconciling Patterns across Temperate and Tropical Regions. *Environmental Health Perspectives*. 2011;119(4):439-445. doi:10.1289/ehp.1002383
 60. Tang JW, Lam TT, Zaraket H, et al. Global epidemiology of non-influenza RNA respiratory viruses: data gaps and a growing need for surveillance. *The Lancet Infectious Diseases*. 2017;17(10):e320-e326. doi:10.1016/s1473-3099(17)30238-4
 61. Li Y, Reeves RM, Wang X, et al. Global patterns in monthly activity of influenza virus, respiratory syncytial virus, parainfluenza virus, and metapneumovirus: a systematic analysis. *Lancet Glob Health*. 2019;7(8):e1031-e1045.
 62. Azziz Baumgartner E, Dao CN, Nasreen S, et al. Seasonality, timing, and climate drivers of influenza activity worldwide. *J Infect Dis*. 2012;206(6):838-846.
 63. Mofijur M, Fattah IMR, Saiful Islam AB, Ashrafur Rahman SM, Chowdhury MA. Relationship between Climate Variables and New Daily COVID-19 Cases in Dhaka, Bangladesh. doi:10.20944/preprints202007.0699.v1
 64. Livadiotis G. Statistical analysis of the impact of environmental temperature on the exponential growth rate of cases infected by COVID-19. *bioRxiv*. Published online April 24, 2020. doi:10.1101/2020.04.21.20072405
 65. Scafetta N. Distribution of the SARS-CoV-2 Pandemic and Its Monthly Forecast Based on Seasonal Climate Patterns. *Int J Environ Res Public Health*. 2020;17(10). doi:10.3390/ijerph17103493
 66. Friel S. *Climate Change and the People's Health*. Oxford University Press; 2019.
 67. Lin R, Wang X, Huang J. Do weather conditions affect COVID-19 epidemic? Evidence based on panel data of prefecture-level administrative regions in China. *Research Square*. Published online July 2, 2021. doi:10.21203/rs.3.rs-645202/v1

68. Peci A, Winter AL, Li Y, et al. Effects of Absolute Humidity, Relative Humidity, Temperature, and Wind Speed on Influenza Activity in Toronto, Ontario, Canada. *Appl Environ Microbiol*. 2019;85(6). doi:10.1128/AEM.02426-18
69. Choi YW, Tuel A, Eltahir EAB. On the Environmental Determinants of COVID-19 Seasonality. *Geohealth*. 2021;5(6):e2021GH000413.
70. Moriyama M, Hugentobler WJ, Iwasaki A. Seasonality of Respiratory Viral Infections. *Annu Rev Virol*. 2020;7(1):83-101.
71. Stensballe LG, Devasundaram JK, Simoes EA. Respiratory syncytial virus epidemics: the ups and downs of a seasonal virus. *Pediatr Infect Dis J*. 2003;22(2 Suppl):S21-S32.
72. Planas D, Veyer D, Baidaliuk A, et al. Reduced sensitivity of SARS-CoV-2 variant Delta to antibody neutralization. *Nature*. 2021;596(7871):276-280.
73. Campbell F, Archer B, Laurenson-Schafer H, et al. Increased transmissibility and global spread of SARS-CoV-2 variants of concern as at June 2021. *Euro Surveill*. 2021;26(24). doi:10.2807/1560-7917.ES.2021.26.24.2100509
74. Cameroni E, Bowen JE, Rosen LE, et al. Broadly neutralizing antibodies overcome SARS-CoV-2 Omicron antigenic shift. *Nature*. Published online December 23, 2021. doi:10.1038/s41586-021-04386-2
75. Bloom-Feshbach K, Alonso WJ, Charu V, et al. Latitudinal variations in seasonal activity of influenza and respiratory syncytial virus (RSV): a global comparative review. *PLoS One*. 2013;8(2):e54445.
76. Tang JW, Bialasiewicz S, Dwyer DE, et al. Where have all the viruses gone? Disappearance of seasonal respiratory viruses during the COVID-19 pandemic. *J Med Virol*. 2021;93(7):4099-4101.
77. Veldhoen M, Simas JP. Endemic SARS-CoV-2 will maintain post-pandemic immunity. *Nat Rev Immunol*. 2021;21(3):131-132.
78. Cheng KY. *Coronavirus HKU1 and Other Coronaviruses in Respiratory Infections in Hong Kong*; 2006.

Table 1. Datasets on seasonal coronavirus incidence

Dataset	Location	Dates	Sample	HCoV incidence				Reference
				229E	OC43	NL63	HKU1	

North America

i	New York City, USA	10/2016–12/2018	122	31	48	15	28	37
ii	Denver, Colorado, USA	12/2004–11/ 2005	84	11	34	37	2	38
<i>Europe</i>								
iii	Stockholm, Sweden	1/2010–2/2020	2,093	320	1,266	507	— ^a	39
iv	Trøndelag, Norway	1/2007–12/2014	263	16	113	84	50	40
v	Gothenburg, Sweden	11/2006–10/2009	239	33	124	82	— ^a	22
vi	Amsterdam, Netherlands	1985–2011	101	38	30	25	8	20
vii	Tampere, Finland	9/2009–8/2011	52	13	13	15	11	41
<i>Asia</i>								
viii	South Korea ^b	1/2010–12/2012	1,568	153	871	544	— ^a	42
ix	Yamagata, Japan	1/2010–12/2014	388	40	94	154	100	43
x	Guangzhou, China	7/2010–6/2015	293	49	177	44	23	44
xi	Sarlahi, Nepal	6/2011–5/2014	270	19	103	70	78	45
xii	Beijing, China	5/2005–4/2009	87	15	50	8	14	46
xiii	Hong Kong, China	4/2014–5/2015	87	4	53	17	13	78
xiv	Nakhon Si Thammarat, Thailand	7/2009–6/2010	32	— ^a	22	9	1	48

^aSamples from this region were not assayed for this virus.

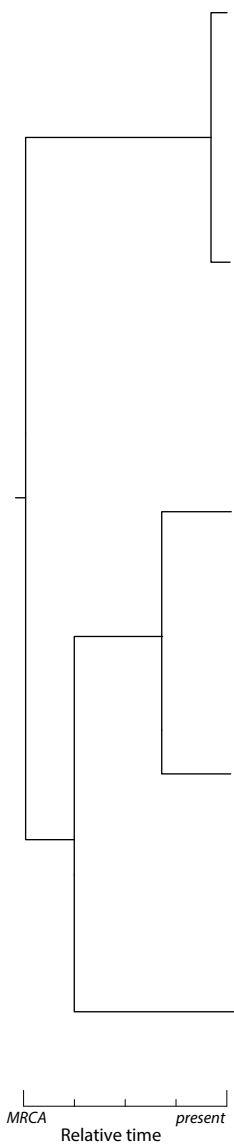
^bNationwide.

Figure legends

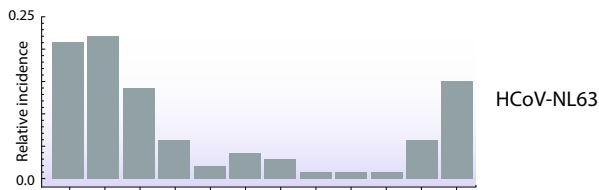
Figure 1. Phylogenetic inference of relative monthly incidence of SARS-CoV-2 under endemic conditions. (A) Time tree based on the phylogenetic divergence of circulating human-infecting coronaviruses. Empirical relative monthly incidences of HCoV (B) -NL63, (C) -229E, (D) -HKU1, and (E) -OC43, and ancestral- and descendent-states analytical estimates of relative monthly incidences of SARS-CoV-2 in Trøndelag, Norway.

Figure 2. Ancestral- and descendent-states analytical estimates of the relative monthly incidence of SARS-CoV-2 under endemic conditions. (A) New York City and Denver, USA; (B) Amsterdam, Netherlands; Gothenburg and Stockholm, Sweden; Trøndelag, Norway; and Tampere, Finland; (C) Beijing, China; Sarlahi, Nepal; Guangzhou, China; Nakhon Si Thammarat, Thailand; Hong Kong, China; Yamagata, Japan; and South Korea (nationwide).

A



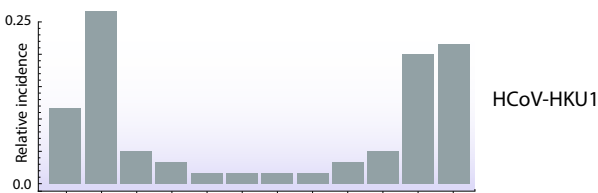
B



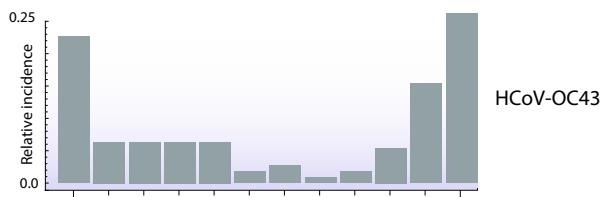
C



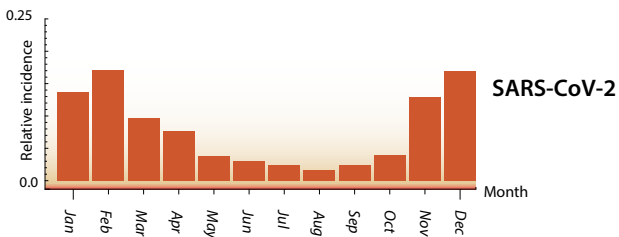
D



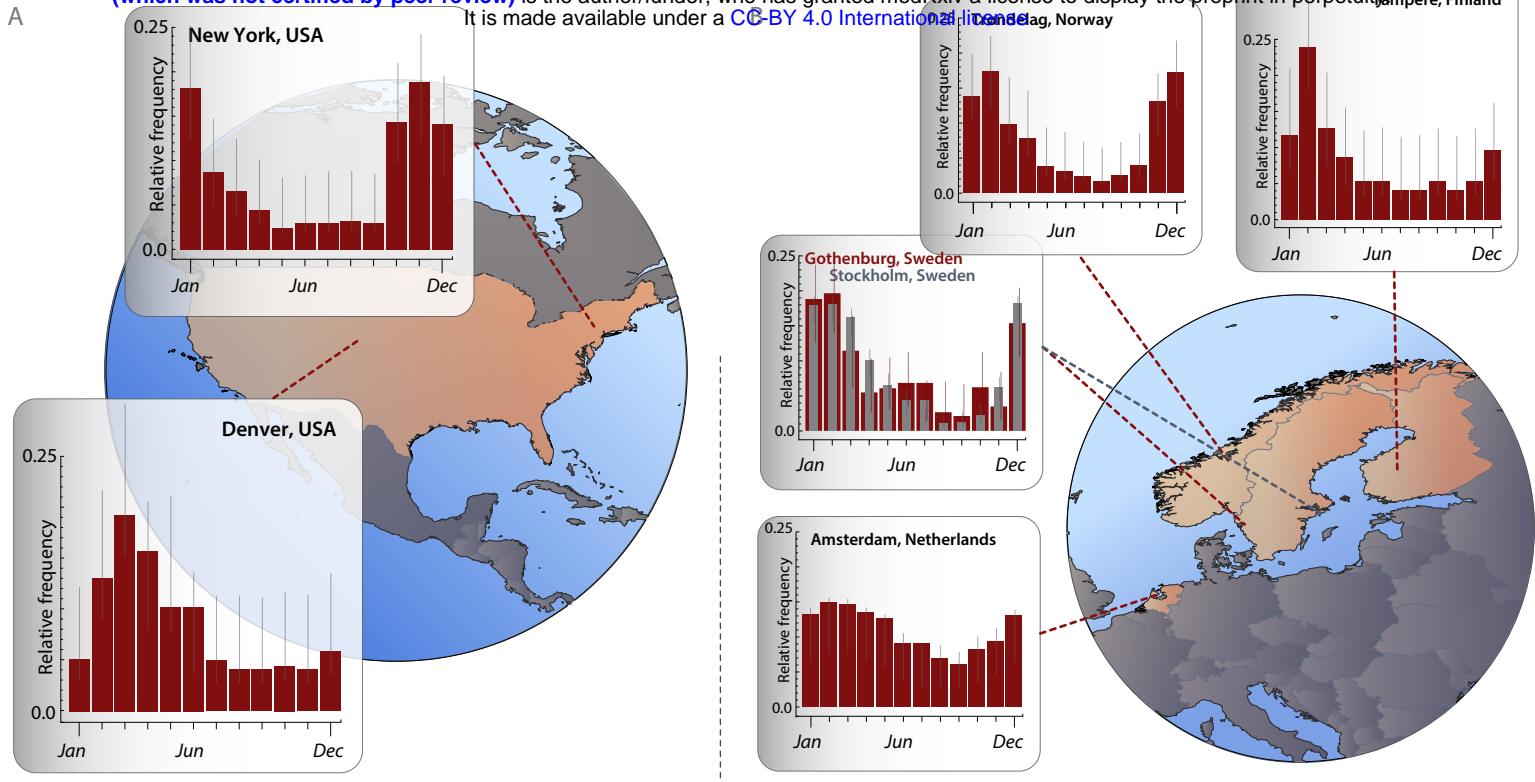
E



F



A



C

