

Supplementary Information

for

GRAPHENE FIELD EFFECT BIOSENSOR FOR CONCURRENT AND SPECIFIC DETECTION  
OF SARS-CoV-2 AND INFLUENZA

Neelotpala Kumar<sup>1,2</sup>, Dalton Towers<sup>3</sup>, Samantha Myers<sup>4</sup>, Cooper Galvin<sup>3</sup>, Dmitry Kireev<sup>1,2\*</sup>, Andrew Ellington<sup>5</sup>, Deji Akinwande<sup>1,2\*</sup>

<sup>1</sup>Microelectronics Research Center, The University of Texas at Austin, Texas 78758, United States

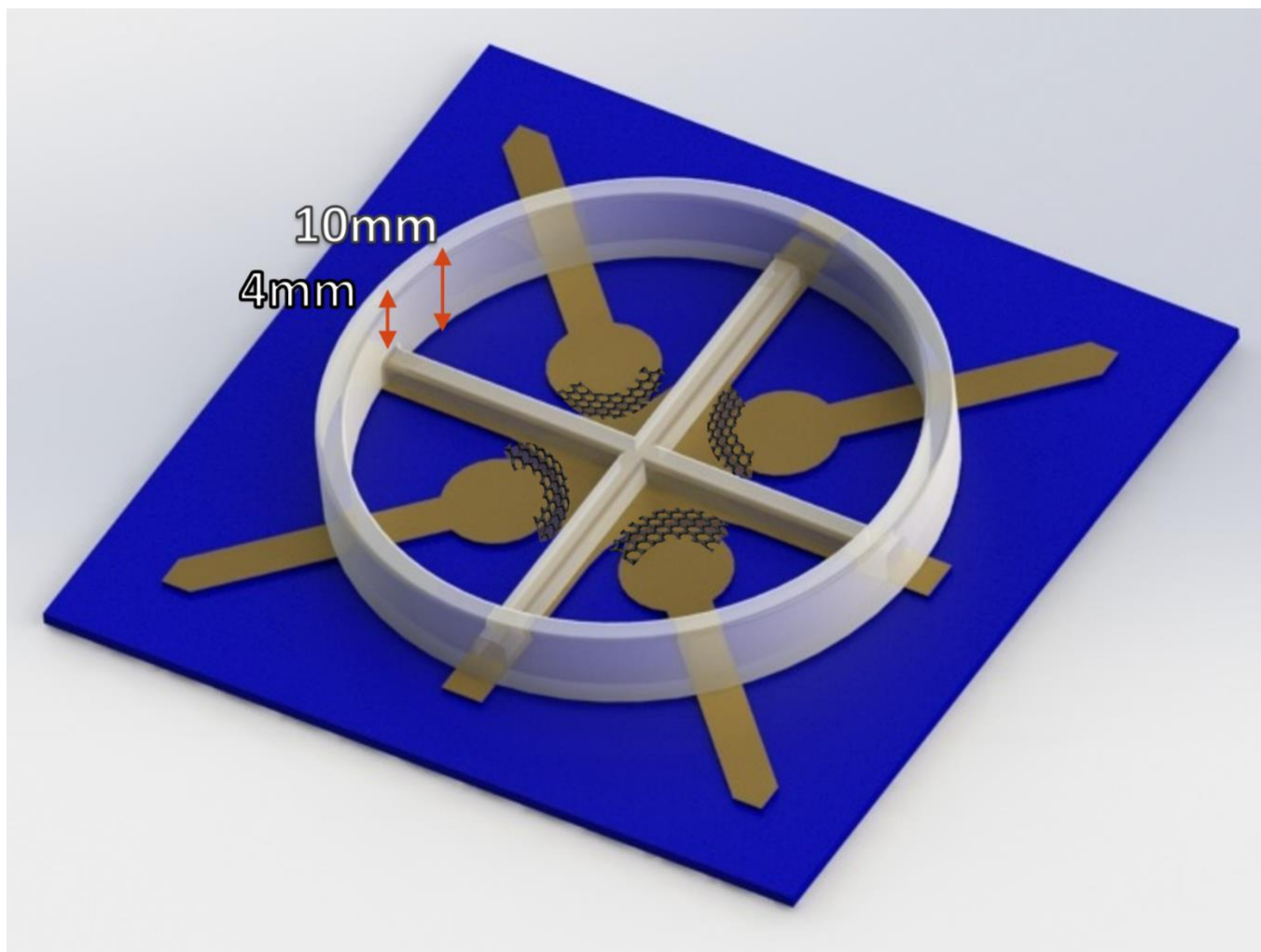
<sup>2</sup>Department of Electrical and Computer Engineering, The University of Texas at Austin, Texas 78712, United States

<sup>3</sup>Department of Chemical Engineering, The University of Texas at Austin, Texas, 78712, United States

<sup>4</sup>College of Natural Sciences, The University of Texas at Austin, Texas, 78712, United States

<sup>5</sup>Center for Systems and Synthetic Biology, Institute for Cellular and Molecular Biology, Department of Molecular Biosciences, University of Texas at Austin, Texas 78712

\*Corresponding authors: [deji@ece.utexas.edu](mailto:deji@ece.utexas.edu), [d.kireev@utexas.edu](mailto:d.kireev@utexas.edu)



*Figure S1. Height difference between the inside PDMS cross enclosure and the outer enclosure. The height difference of the outer and the inner enclosure allows independent functionalization, while during testing it holds a common medium across all the GFETs, thus doing away with the requirement of complex microfluidics to enable concurrent detection.*

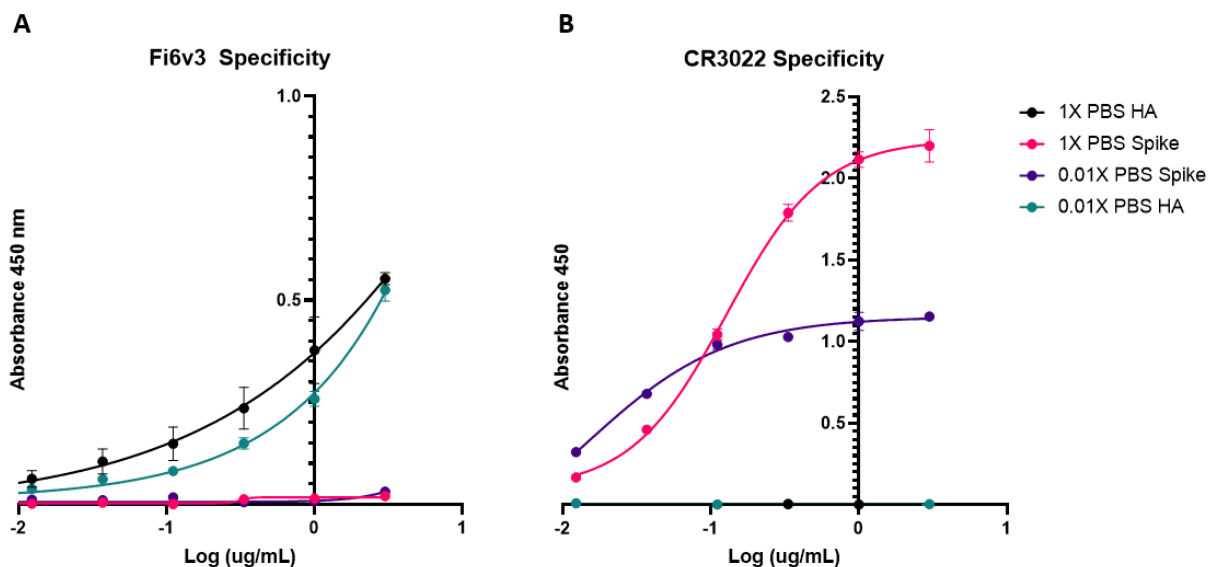


Figure S2. Comparison of performance and specificity of the COVID-19 and flu antibodies in buffers of different ionic strengths a) Fi6V3 and b) CR3022 at 1X and 0.01X PBS.

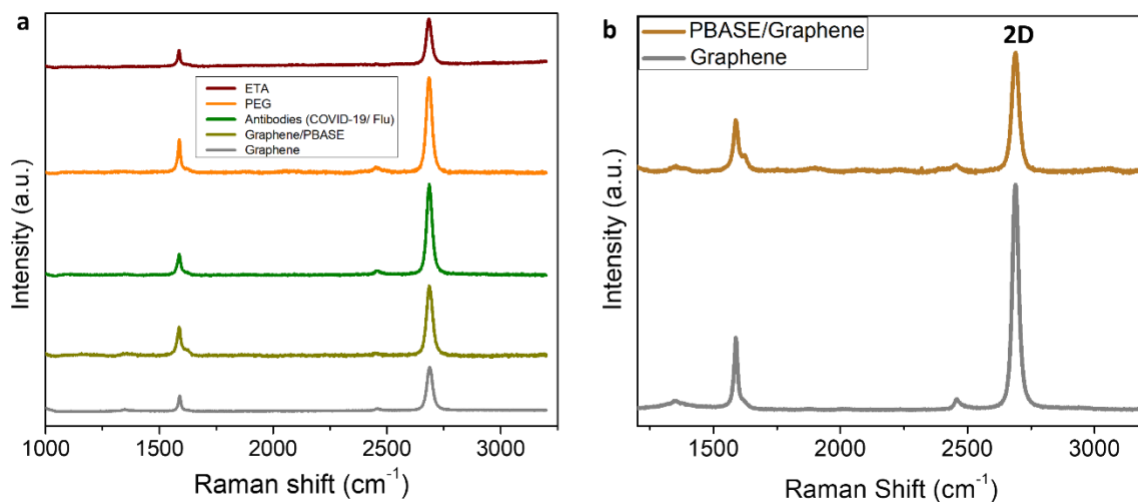
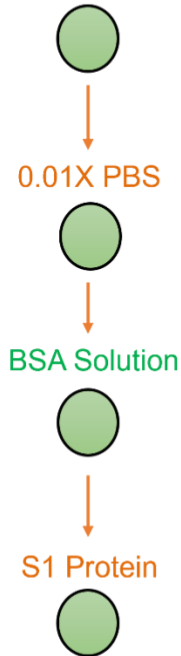


Figure S3: Raman results of the all the steps of functionalization. (a) Full spectrum Raman spectroscopy after modification of bare graphene with PBASE. The 2D peak moves right by  $1.3 \text{ cm}^{-1}$  indicating hole doping (b) Raman spectroscopy results of all the steps of functionalization.

### Specificity Test Protocol

0.01X PBS (Volume of the well)



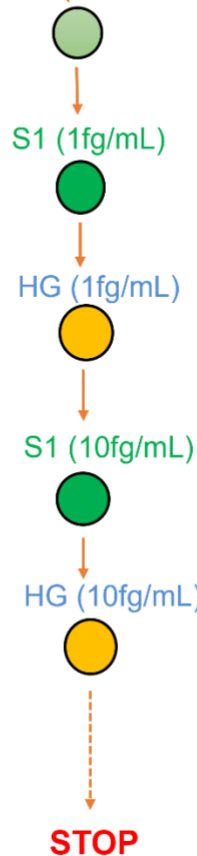
0.01X PBS

BSA Solution

S1 Protein

### Time Series Protocol

0.01X PBS (Volume of the well)



S1 (1fg/mL)

HG (1fg/mL)

S1 (10fg/mL)

HG (10fg/mL)

**STOP**

- Wash the well and the Gate electrode with PBS 0.01 X
- Dry the Gate electrode with air gun

Figure S4. Time series measurement protocol employed while testing the device against both COVID-19 and Flu antigens.

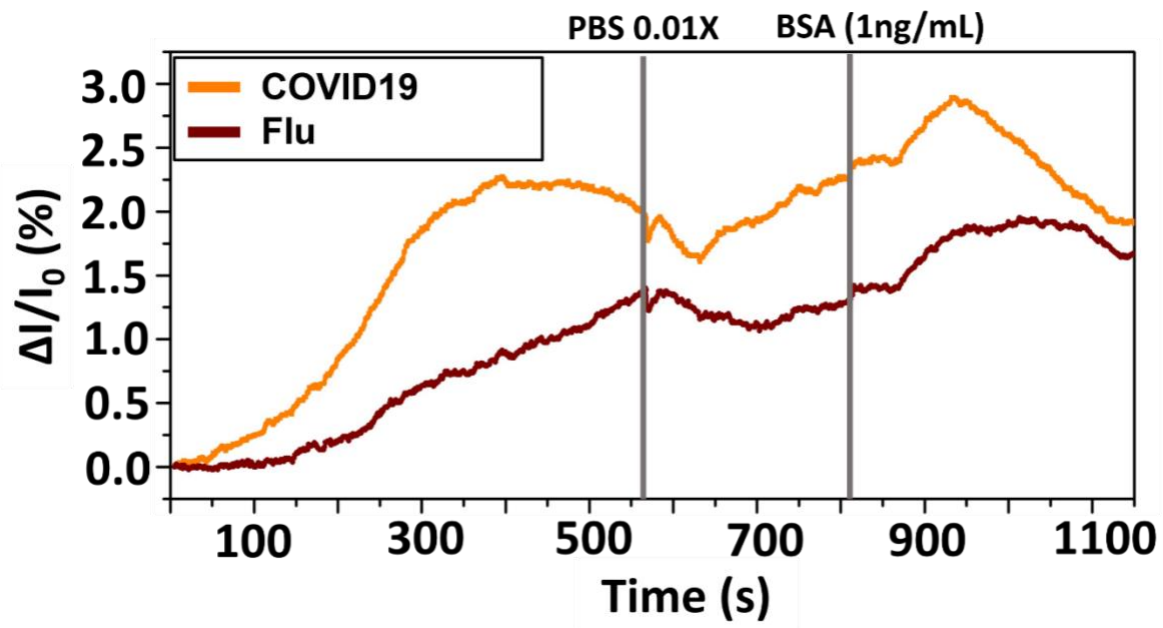


Figure S5. Time series specificity test of the device against blank sample and negative control i.e., BSA.