

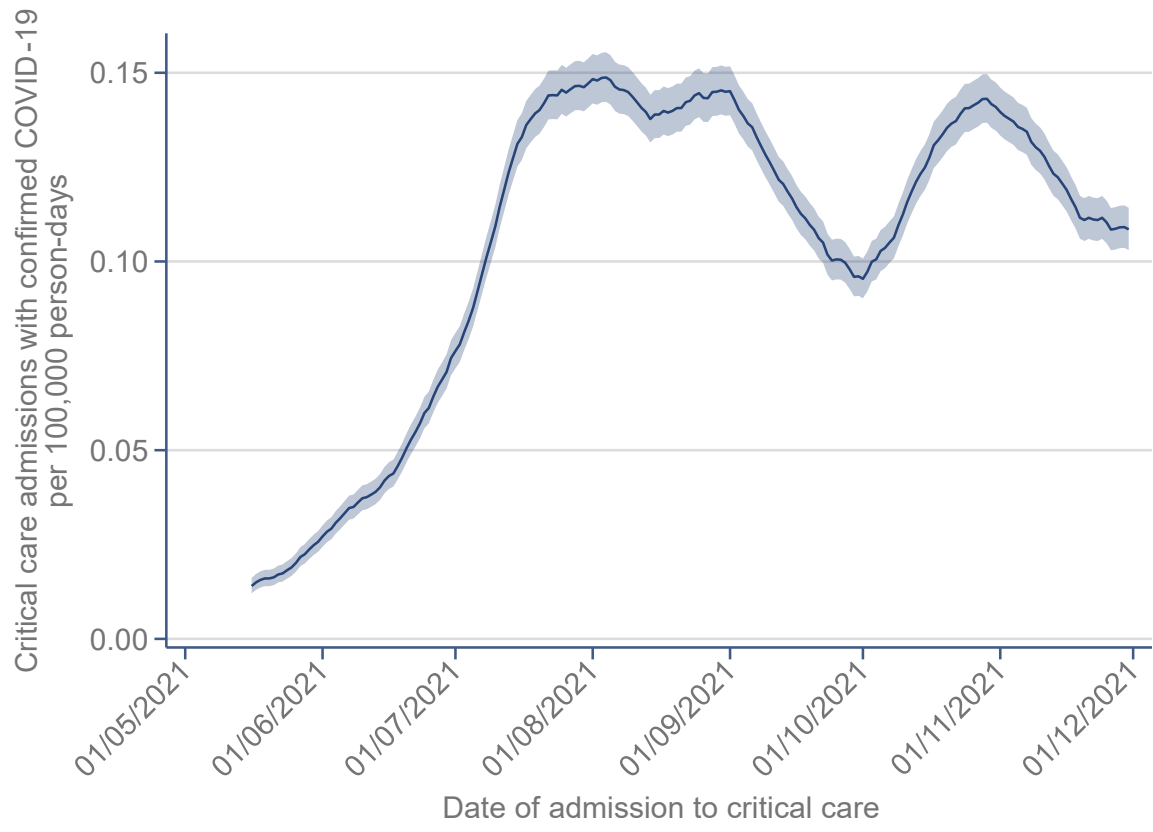
# Impact of vaccination on COVID-19-associated admissions to critical care in England: a population cohort study of linked data

## Supplementary appendix

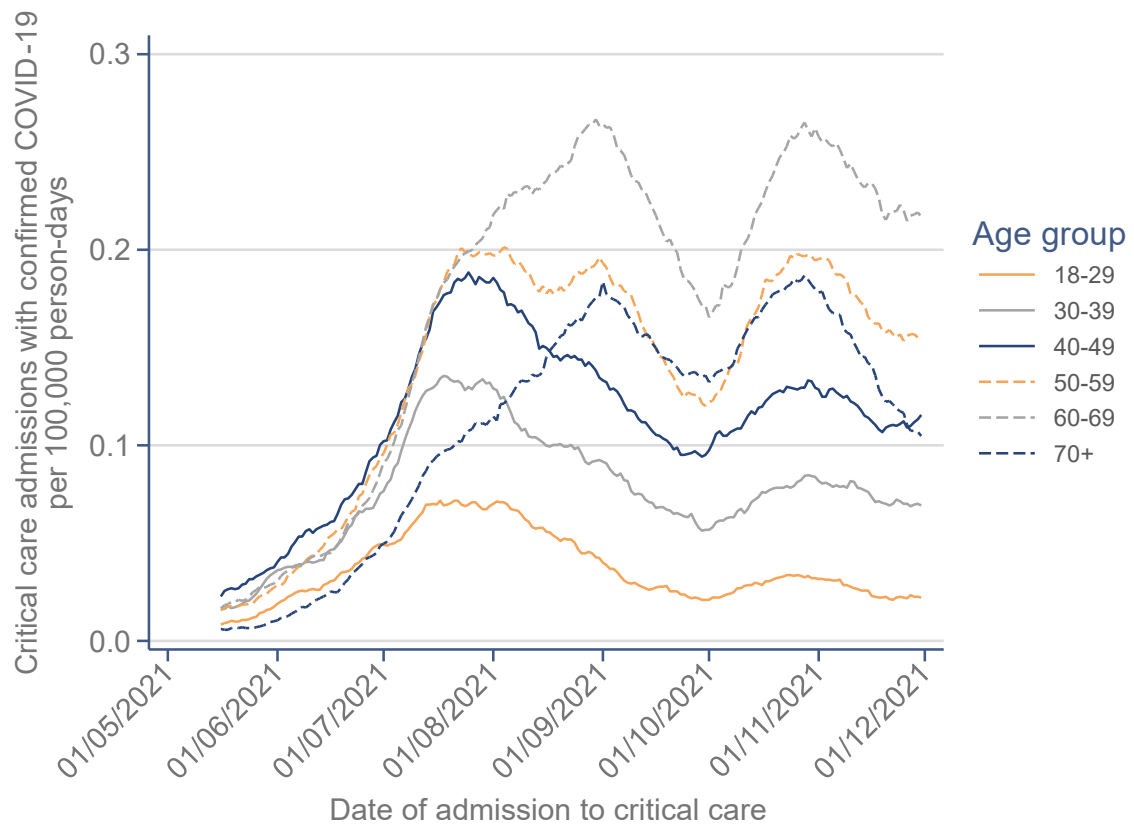
David A Harrison, Peter J Watkinson, James C Doidge, Manu Shankar-Hari, Paul R Mouncey, Martina Patone, Carol A C Coupland, Julia Hippisley-Cox, Kathryn M Rowan

### Contents

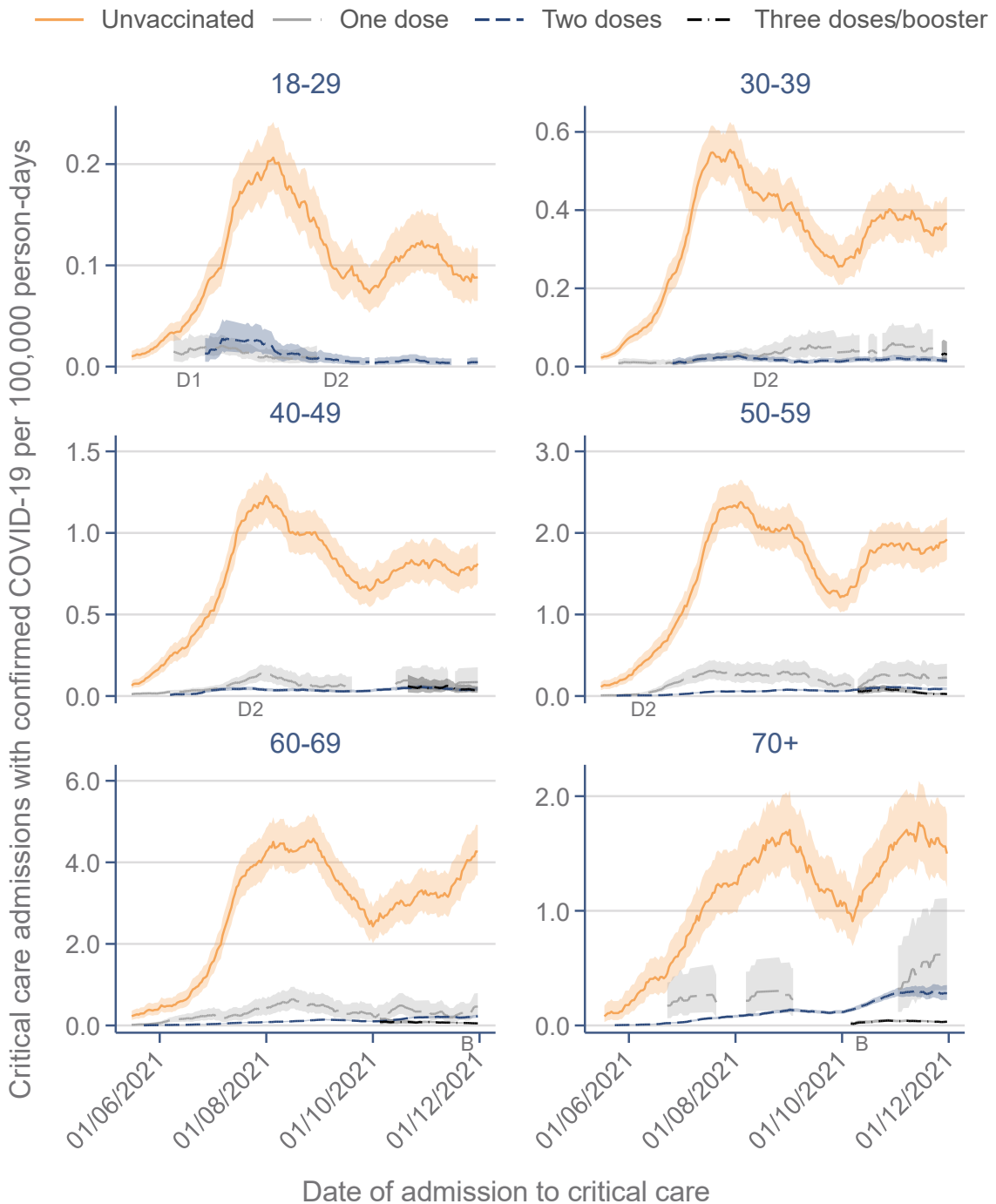
Figure S1. Rate of admission to critical care over time .....	2
Figure S2. Rate of admission to critical care by age group over time .....	3
Figure S3. Rate of admission to critical care by age group and vaccination status over time – sensitivity analysis.....	4
Figure S4. Percentage reduction in rate of admission to critical care associated with vaccination by age group over time – sensitivity analysis .....	5



**Figure S1. Rate of admission to critical care over time**  
30-day moving average.

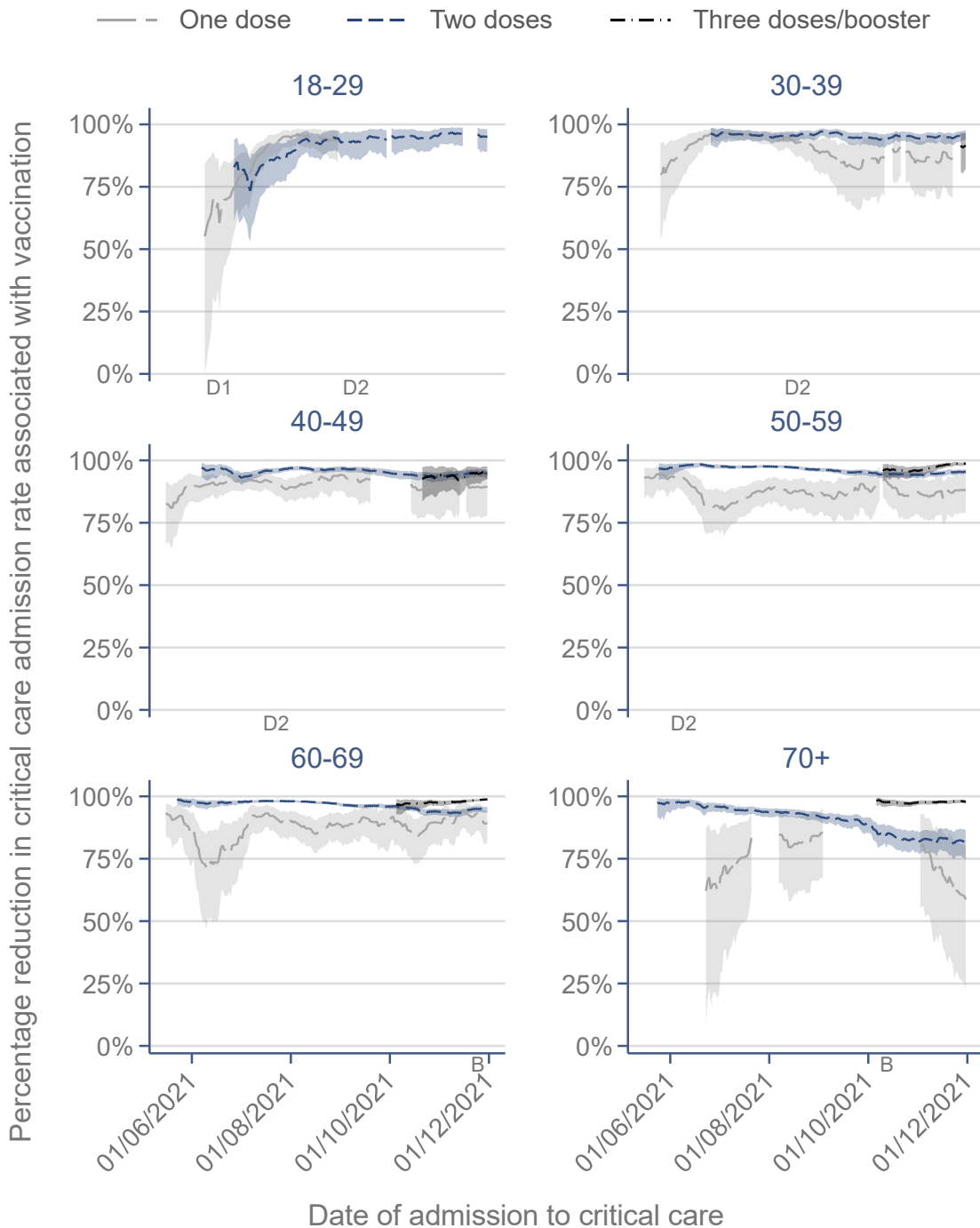


**Figure S2. Rate of admission to critical care by age group over time**  
30-day moving average.



**Figure S3. Rate of admission to critical care by age group and vaccination status over time – sensitivity analysis**

Vaccination status assessed on the date of the positive SARS-CoV-2 test. 30-day moving average. D1=date on which dose 1 of vaccine was offered to all people within the age group (predates the analysis time period for age groups of 30 years and over). D2=date on which dose 2 of the vaccine was offered to all people within the age group (predates the analysis time period for age groups of 60 years and over). B=date on which booster dose was offered to all people within the age group (after the analysis time period for age groups under 60 years).



**Figure S4. Percentage reduction in rate of admission to critical care associated with vaccination by age group over time – sensitivity analysis**

Vaccination status assessed on the date of the positive SARS-CoV-2 test. 30-day moving average. D1=date on which dose 1 of vaccine was offered to all people within the age group (predates the analysis time period for age groups of 30 years and over). D2=date on which dose 2 of the vaccine was offered to all people within the age group (predates the analysis time period for age groups of 60 years and over). B=date on which booster dose was offered to all people within the age group (after the analysis time period for age groups under 60 years).