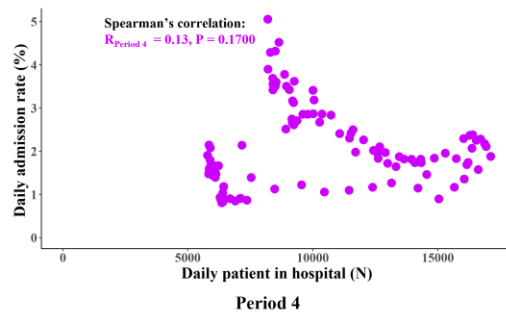
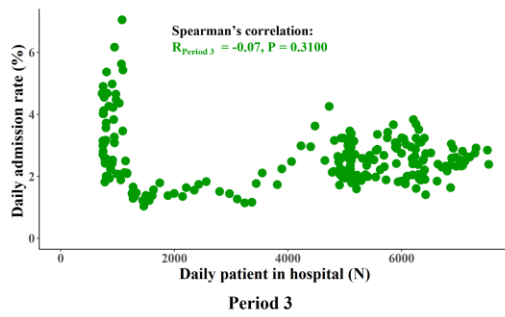
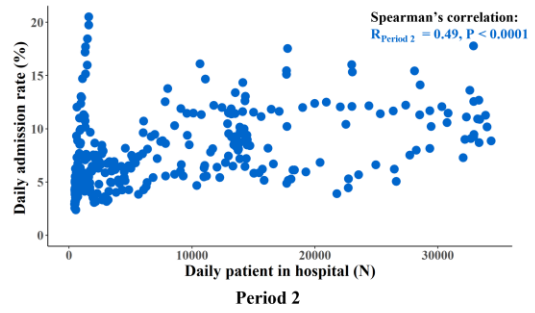
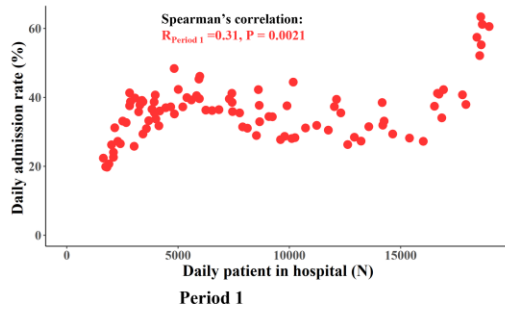


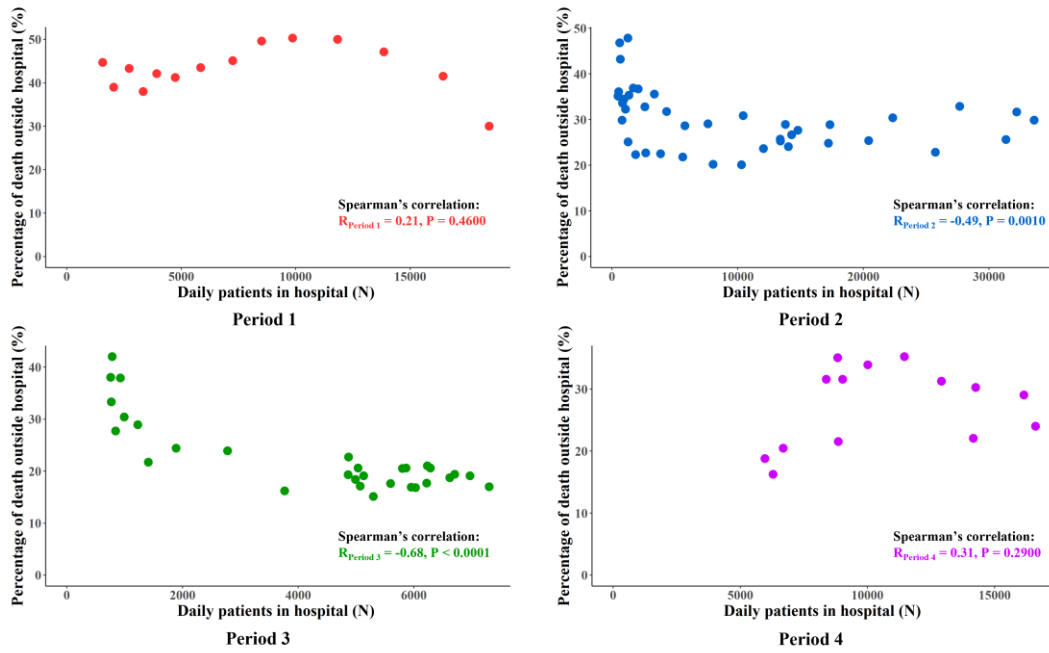
**Appendix Figure 1. The correlation of COVID-19 fatality with patients currently in ventilation beds during the 4 epidemic periods in England.**

**Appendix Table 1. Regression coefficients and relative increase in daily case fatality for each predictor in the multivariate log linear regression model in Table 3.**

<b>Variables</b>	<b>Regression coefficients (95% CI)</b>	<b>Relative increase (95% CI)</b>	<b>P-value</b>
<b>Study periods</b>			
Period 1	-0.005(-0.113,0.103)	0.995(0.893,1.108)	0.9262
Period 2	Ref (0.000)	Ref (1.000)	-
Period 3	-0.180(-0.284,-0.076)	0.835(0.753,0.927)	0.0007
Period 4	0.544(0.347,0.741)	1.723(1.414,2.098)	<0.0001
<b>Daily number of patients in hospital (per 1000 increase) in period 2</b>	0.014(0.128,0.015)	1.014(1.137,1.015)	<0.0001
<b>Interaction term between daily number of patients in hospital (per 1000 increase) and study periods</b>			
Period 1	0.047(0.043,0.052)	-	<0.0001
Period 2	Ref (0.000)	-	-
Period 3	0.106(0.088,0.123)	-	<0.0001
Period 4	-0.019(-0.028,-0.011)	-	<0.0001
<b>Vaccination score (per 10% increase)</b>	-0.051(-0.059,-0.044)	0.95(0.943,0.957)	<0.0001
<b>Admission rate (per 10% increase)</b>	-0.019(-0.040,0.002)	0.981(0.961,1.002)	0.0826
<b>Percentage of death outside hospital (per 10% increase)</b>	-0.018(-0.045,0.009)	0.982(0.956,1.009)	0.1914



**Appendix Figure 2. The correlation of daily admission rate with patients currently in hospital during the 4 study periods.**



**Appendix Figure 3. The correlation of the percentage of deaths outside hospitals with daily patients currently in hospital during the 4 study periods (on a weekly basis).**