

Influence of climatic and environmental risk factors on child diarrhea and enteropathogen infection and predictions under climate change in rural Bangladesh

Jessica A. Grembi¹, Anna T. Nguyen², Marie Riviere², Gabriella Barratt Heitmann², Arusha Patil², Tejas S. Athni², Stephanie Djajadi³, Ayse Ercumen⁴, Audrie Lin³, Yoshika Crider⁵, Andrew Mertens³, John M. Colford, Jr.³, Benjamin F. Arnold⁶, Md Abdul Karim⁷, Md Ohedul Islam⁷, Rana Miah⁷, Syeda L. Famida⁷, Md Saheen Hossen⁷, Palash Mutsuddi⁷, Shahjahan Ali⁷, Md Ziaur Rahman⁷, Zahir Hussain⁷, Abul K. Shoab⁷, Rashidul Haque⁷, Mahbubur Rahman⁷, Leanne Unicomb⁷, Stephen P. Luby¹, Adam Bennett⁸, Jade Benjamin-Chung^{2,9}

1. Division of Infectious Diseases and Geographic Medicine, Department of Medicine, School of Medicine, Stanford University, Stanford, CA, USA
2. Department of Epidemiology and Population Health, School of Medicine, Stanford University, Stanford, CA, USA
3. Division of Epidemiology, School of Public Health, University of California, Berkeley, Berkeley, CA, USA
4. Department of Forestry and Environmental Resources, NC State University, Raleigh, NC, USA
5. King Center on Global Development, Stanford University, Stanford, California, USA
6. Francis I. Proctor Foundation and Department of Ophthalmology, University of California, San Francisco, San Francisco, CA, USA
7. Infectious Disease Division, International Centre for Diarrhoeal Disease Research, Bangladesh, Dhaka, Bangladesh
8. Malaria Elimination Initiative, Global Health Group, University of California San Francisco, San Francisco, CA, USA
9. Chan Zuckerberg Biohub, San Francisco, CA, USA

Abstract

Background

Understanding pathogen-specific relationships with climate is crucial to informing interventions under climate change.

Methods

We matched spatiotemporal temperature, precipitation, surface water, and humidity data to data from a trial in rural Bangladesh that measured diarrhea and enteropathogen prevalence in children 0-2 years from 2012-2016. We fit generalized additive models and estimated percent changes in prevalence using projected precipitation under Shared Socio-Economic pathways describing sustainable development (SSP1), middle of the road (SSP2), and fossil fuel development (SSP5) scenarios.

Findings

An increase from 15°C to 30°C in weekly average temperature was associated with 5.0% higher diarrhea, 6.4% higher Norovirus, and 13.0% higher STEC prevalence. Above-median precipitation was associated with 1.27-fold (95% CI 0.99, 1.61) higher diarrhea; higher *Cryptosporidium*, tEPEC, ST-EPEC, STEC, *Shigella*, EAEC, *Campylobacter*, *Aeromonas*, and Adenovirus 40/41; and lower aEPEC, *Giardia*, Sapovirus, and Norovirus prevalence. Other associations were weak or null. Compared to the study period, diarrhea prevalence was similar under SSP1 (7%), 3.4% (2.7%, 4.3%) higher under SSP2, and 5.7% (4.4%, 7.0%) higher under SSP5. Prevalence of pathogens responsible for a large share of moderate-to-severe diarrhea in this setting (*Shigella*, *Aeromonas*) were 13-20% higher under SSP2 and SSP5.

Interpretation

Higher temperatures and precipitation were associated with higher prevalence of diarrhea and multiple enteropathogens; higher precipitation was associated with lower prevalence of some enteric viruses. Under likely climate change scenarios, we projected increased prevalence of diarrhea and enteropathogens responsible for clinical illness. Our findings inform pathogen-specific adaptation and mitigation strategies and priorities for vaccine development.

Funding

Bill & Melinda Gates Foundation, National Institute of Allergy and Infectious Diseases, National Heart, Lung, and Blood Institute, Stanford University School of Medicine, Chan Zuckerberg Biohub

1 **Research in Context**

2 **Evidence before this study**

3 We searched Google Scholar and Scopus for studies published from January 1, 2000 to present
4 using the following three queries: 1) child; and diarrhea OR “enteric infection”; and
5 meteorological OR environmental OR “surface water” OR “standing water”; and risk AND/OR
6 factors; 2) Climate AND change AND project* AND diarrhea OR diarrhoea; 3) climate AND
7 change AND project* OR model AND enter* AND infect* AND *E. coli*. Studies generally focused
8 on individual risk factors for diarrhea transmission or enteric infection, with an emphasis on
9 temperature and precipitation. Studies found that higher temperatures were associated with
10 higher incidence of bacterial diarrhea and lower incidence of viral diarrhea; few studies have
11 investigated associations between temperature and parasitic diarrhea. Heavy rainfall,
12 particularly after dry periods, was associated with higher diarrhea prevalence, though heavy
13 rainfall during rainy seasons was found to protect against diarrhea incidence. Similarly, flooding
14 of surface water and shallow wells was also associated with higher diarrhea prevalence. Very
15 few studies investigated associations between diarrhea or enteropathogen carriage and surface
16 water presence, or humidity. A recent individual participant meta-analysis of studies in 19 low-
17 and middle-income countries found that higher precipitation was associated with a small
18 decrease in enterotoxigenic *E. coli* (ETEC) and *Campylobacter* spp. prevalence and no difference
19 in *Shigella*, *Cryptosporidium*, or *Giardia*, or enteric virus prevalence. Weekly average
20 temperature increases of 10-40° C within the study period were associated with higher risk of
21 *Campylobacter*, ETEC, *Shigella*, *Cryptosporidium*, *Giardia*, and adenovirus, and lower risk of
22 sapovirus and rotavirus, and generally, associations were stronger. Higher humidity was
23 associated with higher risk of enteric bacterial infections and lower risk of enteric virus
24 infection. A small number of studies have projected diarrhea under climate change in low- and
25 middle-income countries. Studies have estimated a 15-20% increase in global diarrhea risk in
26 2040-2069 relative to 1961-1990, up to 21% increase in diarrhea incidence in northern India
27 from 2013 to the 2040s, 3-10% increase in diarrhea cases in the Gaza Strip associated with 1.5°
28 to 2°C increases in temperature, and an 8% increase in diarrhea burden by 2050 in Nepal. One
29 study estimated an additional 1,625,073 ETEC diarrhea cases in Bangladesh from 2046-2065

30 due to climate change. No studies estimated changes in the presence of multiple
31 enteropathogens under possible climate change scenarios.

32

33 **Added value of this study**

34 This study matched remote sensing data on precipitation, temperature, surface water, and
35 humidity to data on diarrhea and enteropathogen carriage in children under 2 years from a trial
36 in rural Bangladesh. We fit flexible models to investigate potentially non-linear relationships
37 between each climate and environmental risk factor and each health outcome. In addition, we
38 predicted the prevalence of each outcome under three possible climate change scenarios. Our
39 predictions leveraged the spatiotemporal distributions of both climate precipitation projections
40 and diarrhea and enteropathogen carriage in the trial. To our knowledge, this is the first study
41 to predict prevalence under climate change scenarios for both diarrhea and multiple
42 enteropathogens in a rural, low-resource south Asian setting. Our study sheds light on how
43 climate change may impact diarrhea and enteropathogen carriage in Bangladesh, which is
44 highly vulnerable to climate change due to its low altitude and seasonal flooding.

45

46 **Implications of all the available evidence**

47 We found that both higher temperatures and precipitation were associated with higher
48 diarrhea prevalence, consistent with prior studies. Compared to prior studies, which have
49 primarily found associations between diarrhea and heavy rainfall following a dry period, we
50 found that moderate levels of weekly precipitation were associated with higher diarrhea
51 prevalence. Relationships between climatic and environmental variables and enteropathogen
52 carriage varied by taxa, as other studies have found, but for some pathogens and risk factors,
53 we observed associations in different directions than prior studies. Under middle of the road
54 and fossil fuel-based development climate change scenarios, we projected increased diarrhea
55 prevalence and taxa-specific changes in enteropathogen prevalence. Our findings suggest that
56 climate change may exacerbate diarrhea burden in rural Bangladesh in the absence of
57 sustainable development and inform prioritization of pathogen-specific mitigation and/or

58 adaptation interventions (e.g., vaccines) for young children in rural, South Asian settings under
59 climate change.
60

61 **Introduction**

62 Diarrhea was the third leading cause of disability adjusted life years (DALYs) among children
63 under 10 years in 2019.¹ Among young children, diarrhea can result in long-term impacts on
64 growth² and cognition.³ Where diarrhea burden is high, asymptomatic enteropathogen carriage
65 is common⁴ and is linked to child growth failure⁴ and impaired child cognitive development.⁵

66
67 Climatic and environmental factors may influence diarrhea and enteropathogen carriage in
68 diverse ways due to pathogens' differing environmental survival and transport.⁶ Prior studies
69 have found increased diarrhea after heavy rainfall and floods^{7,8} and that parasitic and bacterial
70 diarrhea are more common in the rainy season.⁹ Increased temperatures have been associated
71 with higher incidence of bacterial diarrhea but lower incidence of viral diarrhea.⁹ In low- and
72 middle-income countries (LMICs), higher temperatures have been associated with a decrease in
73 rotavirus prevalence and small increase in adenovirus prevalence; higher humidity and
74 temperature have been associated with higher enteric bacteria prevalence and lower virus
75 prevalence; and associations with precipitation varied by pathogen.¹⁰

76
77 A small number of studies have estimated the burden of diarrhea and enteropathogen infection
78 under climate change.¹¹⁻¹⁶ The World Health Organization estimated an additional 32,955
79 diarrhea deaths in children under 15 years in 2050 due to climate change, with the greatest
80 increases in South Asia and Eastern Africa.¹⁷ Another study projected that diarrhea risk would
81 increase by 15-20% in the period 2040-2069 relative to risk levels in 1961-1990.¹¹ Since the
82 etiology of diarrhea varies by age and geography,¹⁸ understanding pathogen-specific
83 relationships with climatic variables at present and with climate change can inform adaptation
84 and mitigation strategies.^{8,11,17} Enteropathogens whose burden is most likely to increase under
85 climate change could be prioritized for vaccine development. However, no studies have
86 projected the impact of climate change on the prevalence of multiple enteropathogens.

87

88 Our objectives were to identify climatic and environmental risk factors associated with diarrhea
89 and enteropathogen prevalence in young children in rural Bangladesh and to predict changes in
90 diarrhea and enteropathogen prevalence under potential climate change scenarios.

91

92 **Methods**

93 Study design

94 We analyzed data that was collected in a cluster-randomized trial of water, sanitation,
95 handwashing, and nutrition interventions in rural Gazipur, Mymensingh, Tangail, and
96 Kishoreganj districts of Bangladesh.¹⁹ From 2012-2013, the trial enrolled a total of 720 village
97 clusters spanning a geographic area of 12,500 km². The trial enrolled pregnant women and
98 measured outcomes in their children at enrollment and approximately 1 and 2 years later. We
99 matched climatic and environmental risk factors from remote sensing datasets to trial data by
100 date of outcome measurements and geocoordinates of study compounds (groups of
101 households in which patrilineal families share a common courtyard). Our pre-analysis plan is
102 available at <https://osf.io/f9cza/>, and we note deviations from it in Appendix 1.

103

104 Outcomes

105 Field workers measured caregiver-reported diarrhea (three or more loose or watery stools in a
106 24-hour period or a single stool with blood) in children 6 months - 5.5 years old (N=4,478
107 children). Diarrhea prevalence was measured in three rounds (2012-3, 2013-4, 2014-5). Field
108 workers collected stool samples from a subsample of children aged 14 months in 2014
109 (N=1,645 children) (details in Appendix 2) and detected a panel of 34 enteric viruses, bacteria
110 and parasites in stool using qPCR (N=1,408 children's samples) (details in Appendix 3).

111

112 We measured the following pre-specified primary outcomes: prevalence of 1) caregiver-
113 reported diarrhea in the past 7 days, 2) any enteric virus (adenovirus 40/41, astrovirus,
114 norovirus GI/GII, rotavirus, sapovirus), and 3) any parasite (*Cryptosporidium* spp,
115 *Enterocytozoon bieneusi*, or *Giardia* spp). We did not include prevalence of any bacteria
116 because at least one bacterium was detected in over 95% of samples. Pathogen-specific

117 prevalence for pathogens detected in >10% of samples were secondary outcomes. To detect
118 potential misclassification of diarrhea, we included caregiver-reported child bruising in the past
119 7 days as a negative control outcome.

120

121 Climatic and environmental variables

122 Here we briefly summarize each variable; Appendix 4 includes additional details.

123

124 *Temperature.* Using 1 km resolution daily temperature data from the National Aeronautics and
125 Space Administration (NASA),²⁰ we calculated the average, minimum and maximum
126 temperature values for 7 or 30 days prior to observation with 1-3 week lags for diarrhea and 0-
127 3 week lags for pathogen outcomes.

128

129 *Precipitation.* We obtained 0.5 degree resolution precipitation data from the National Oceanic
130 and Atmospheric Administration.²¹ We created an indicator for heavy rainfall (any day in the
131 prior week with total daily precipitation > 80th percentile on rainy days during the study period)
132 and an indicator for whether the weekly sum of precipitation was above or below the median.
133 We included 1-3-week lags for diarrhea and 0-3-week lags for pathogen outcomes.

134

135 *Surface water.* We obtained 30 m resolution surface water data for the period 1984-2020 from
136 the Global Surface Water Explorer.²² Variables included: 1) seasonal surface water consistently
137 present in a season, 2) ephemeral surface water present intermittently, and 3) any surface
138 water (ephemeral, seasonal, or permanent). We calculated tertiles of distance from each
139 household to the nearest surface water and created an indicator for whether the proportion of
140 pixels with surface water within 250m, 500m, or 750m of each household was above or below
141 the median.

142

143 *Humidity.* We obtained mean monthly vapor pressure deficit data with 4 km resolution from
144 Terraclimate²³ and measured associations with a continuous measure in kilopascals (kPA).

145

146 Statistical analysis

147 We restricted diarrhea analyses to the control arms of the original trial (N=7,320
148 measurements) because a companion analysis found that intervention effects on diarrhea were
149 modified by climate and environment.²⁴ For pathogen carriage outcomes, we pooled across all
150 study arms in which specimens were collected (N=1,408 measurements) and included study
151 arm as a covariate.

152

153 We used generalized additive mixed models to estimate the relationship between continuous
154 exposures (modeled with cubic splines) and outcomes. We adjusted for covariates that were
155 associated with each outcome in our dataset using a likelihood ratio test (p-value < 0.1) (details
156 in Appendix 5). Because pair-wise correlations between climatic exposures were not strong
157 (Figure A1), we did not adjust individual exposure models for other climatic exposures. To
158 assess potential spatial autocorrelation, we used Moran's I coefficient and included a
159 bidimensional thin plate spline function of household latitude and longitude for models in
160 which we detected spatial autocorrelation. We included random intercepts for study compound
161 for diarrhea models to account for multiple measurements per child and per compound and
162 random intercepts for study cluster for pathogen outcomes to account for village-level
163 clustering. To estimate simultaneous confidence intervals, we resampled from the variance-
164 covariance matrix under a multivariate normal distribution.²⁵

165

166 We predicted the percentage point change in prevalence under projected precipitation in 2050
167 using three climate change scenarios: sustainable development reduces CO₂ emissions to net
168 zero by 2050 (Shared Socioeconomic Pathways 1 (SSP1)); current socioeconomic trends remain
169 similar and progress towards sustainability is slow, and CO₂ emissions remain the same in 2050
170 (SSP2); and fossil fuel-based development dominates and CO₂ emissions double by 2050
171 (SSP5).²⁶ We matched precipitation projections for 2050 from the Coupled Model
172 Intercomparison Project Phase 6 data from the NASA Center for Climate Simulation to study
173 household location and measurement week. We calculated mean weekly precipitation using 0-
174 3 week lags (see details in Appendix 6). Because the generalized additive model spline fits were

175 approximately linear, for computational efficiency, we fit generalized linear models with a
176 binomial link function between outcomes and the weekly sum of precipitation then used
177 parametric g-computation to calculate percent changes in predicted prevalence under each SSP
178 scenario vs. the study period. We used a bootstrap with 1,000 replicates, resampling by study
179 clusters for pathogen outcomes and by study compounds for the diarrhea analysis. Our primary
180 analysis used precipitation lag periods that best aligned with the incubation period for each
181 outcome (Appendix 7) and repeated analyses with alternative lag periods. We assumed that the
182 association between precipitation and each outcome will remain constant over time.

183

184 We assessed effect modification for each outcome by child age (<1.5 vs. ≥1.5 years) for
185 diarrhea outcomes. For precipitation analyses, we assessed effect modification by temperature.

186

187 Role of the funding source

188 The funders of the study had no role in study design, data analysis, interpretation, writing of
189 the manuscript, or the decision to submit the manuscript for publication.

190

191 **Results**

192 Study participant characteristics

193 The diarrhea cohort included 4,478 children (mean age = 23 months; SD = 12) measured in
194 three rounds from 2012-2016, and the pathogen cohort included 1,408 children (mean age = 14
195 months; SD = 2) measured primarily in 2014 (Table 1). Other demographic characteristics of
196 each cohort have previously been reported.^{19,27}

197

198 Temporal trends

199 The study period spanned three rainy seasons from 2013-2015. During the rainy season,
200 average weekly temperature was higher (Figure 1). Distance to surface water was slightly lower
201 during the peak of each rainy season. Diarrhea measurements were not collected in some
202 weeks of the 2013-14 rainy seasons.

203

204 Temperature

205 During the study period, the weekly average temperature was 17-32°C, the weekly minimum
206 temperature was 6-25°C, and the weekly maximum temperature was 22-40°C. Diarrhea
207 prevalence was 2.8% (95% CI 1.0%, 7.6%) at weekly average temperature of 15°C and 7.3%
208 (95% CI 3.2%, 15.8%) at 30° C using a 3-week lag; there was no association with shorter lags
209 (Figure 2a). Higher average temperatures were also associated with higher norovirus
210 prevalence (12.0% (95% CI 6.6%, 20.8%) at 17°C; 18.3% (95% CI 11.9%, 27.0%) at 30°C; 1-week
211 lag), and higher STEC prevalence (5.2% (95% CI 1.9%, 13.8%) at 18°C; 17.8% (95% CI 9.6%,
212 30.5%) at 30°C; 1-week lag) (Figure 2b). There was no association with prevalence of other
213 bacteria (Figure 2c) or parasites (Figure 2d). Overall, results for pathogen prevalence were
214 similar using alternative lag periods (Figure A2). Diarrhea and pathogen prevalence were not
215 meaningfully associated with weekly minimum and maximum temperature (Figure A3-5).

216

217 Precipitation

218 Mean total weekly precipitation was 52mm (range: 0-284mm) annually, 13mm (range: 0-
219 171mm) in the dry season and 91mm (2-307mm) in the wet season. Above-median weekly
220 precipitation was associated with higher diarrhea prevalence (PR = 1.27; 95% CI 0.99, 1.61;
221 adjusted PR (aPR) = 1.35, 95% CI 1.10, 1.67) using a 2-week lag, but not using 1- or 3-week lags
222 (Figure 3a). For parasites, above-median weekly precipitation was associated with higher
223 *Cryptosporidium* prevalence (e.g., PR = 2.21; 95% CI 1.49, 3.26 for a 3-week lag), but lower
224 *Giardia* prevalence (e.g., PR = 0.63; 95% CI 0.45, 0.89 for a 2-week lag) (Figure 3b). For viruses,
225 above-median weekly precipitation was associated with higher prevalence of adenovirus 40/41,
226 but lower prevalence of sapovirus and norovirus (Figure 3c). For bacteria, above-median weekly
227 precipitation was associated with higher prevalence of typical enteropathogenic *Escherichia coli*
228 (tEPEC), enterotoxigenic *Escherichia coli* with heat-stable toxin (ST-EPEC), Shiga toxin-producing
229 *Escherichia coli* (STEC), *Shigella*/enteroinvasive *Escherichia coli* (*Shigella*/EIEC), *Plesiomonas*,
230 enteroaggregative *Escherichia coli* (EAEC), *Campylobacter*, and *Aeromonas* and lower
231 prevalence of atypical enteropathogenic *Escherichia coli* (aEPEC) (Figure 3d). Results varied by
232 lag period. Heavy rainfall was associated with lower prevalence of diarrhea (PR = 0.72, 95% CI

233 0.54, 0.96; 2-week lag) and *E. bieneusi*, norovirus, and sapovirus, and higher prevalence of
234 *Aeromonas*, *Campylobacter*, *Shigella*/EIEC, EAEC, and ST-ETEC (Figure A6).

235

236 Surface water

237 The mean distance from study households to the closest surface water was 287m (range: 10-
238 1818m) for any surface water, 451m (range: 11-2083m) for ephemeral surface water, and 405m
239 (range: 11-1902m) for seasonal surface water. Compared to households in the highest tertile of
240 distance to any surface water (> 316m), *Aeromonas* prevalence was lower for those in the
241 middle tertile (165-316m) (PR=0.53; 95% CI 0.29, 0.96) and in the lowest tertile (<165m)
242 (PR=0.43; 95% CI 0.23, 0.81) (Figure A7). *Aeromonas* results were similar for ephemeral and
243 seasonal surface water. Distance to surface water was not associated with other outcomes.

244

245 Around each study household, the median proportion of land that contained any surface water
246 was 0.4% (range: 0-76%) within 250m, 3% (range: 0-86%) within 500m, and 5% (range: 0-84%)
247 within 750m. Most outcomes were not associated with the proportion of land that contained
248 surface water. For certain radii and surface water types, an above-median proportion of surface
249 water was associated with lower diarrhea, *Aeromonas*, and adenovirus 40/41 prevalence and
250 higher prevalence of tEPEC and *Shigella*/EIEC; however, most confidence intervals were close to
251 or spanned the null (Figure A8).

252

253 Vapor pressure deficit

254 Vapor pressure deficit (VPD) ranged from 0.57 to 1.51 kPa during the study period. Higher
255 values of VPD, corresponding to lower humidity, were associated with small decreases in
256 *Cryptosporidium* and EAEC (Figure A9). While there were some associations with other
257 outcomes, precision was low.

258

259 Projected prevalence under climate change

260 During the study period, total annual rainfall was 2,032 mm during the study period and 1,754
261 mm under SSP1, 3,329 mm under SSP2, and 3,782 mm under SSP5 in 2050 (Table A1). There

262 were 185 rainy days during the study vs. 154 under SSP1, but total precipitation was
263 approximately 11mm per rainy day in both scenarios. Diarrhea prevalence was 5.7% (95% CI
264 4.4%, 7.0%) higher under SSP5, 3.4% (95% CI 2.7%, 4.3%) higher under SSP2, and 0.4% lower
265 under SSP 1 (95% CI 0.2%, 0.9%) (Figure 4). Projected enteropathogen prevalence under SSP1
266 was similar with prevalence in the study period. Under SSP2, prevalence of enteric bacteria
267 carriage was up to 33% higher, although a decrease was estimated for aEPEC. We estimated
268 small increases in the prevalence of *E. bieneusi*, and diarrhea, and up to 13% decreases in the
269 prevalence of *Giardia*, sapovirus and norovirus. Overall, enteropathogen carriage estimates
270 were similar for SSP2 and SSP5. Using alternative precipitation lag periods, we generally
271 observed the largest percent changes with 1-week lags for viruses and 2-week lags for bacteria
272 (Figures A10-12). For parasites, the direction of estimates varied by lag period.

273

274 Other analyses

275 We did not detect effect modification in any of our pre-specified analyses. Our negative control
276 analysis using caregiver-reported child bruising found null associations with each risk factor,
277 suggesting that potential misclassification of the outcome did not substantially influence our
278 results (Table A2, Figure A13).

279

280 **Discussion**

281 We found that higher weekly average temperatures were associated with higher prevalence of
282 diarrhea, norovirus, and STEC; above-median weekly precipitation was associated with higher
283 prevalence of diarrhea, *Cryptosporidium*, adenovirus 40/41, and multiple enteric bacteria and
284 lower prevalence of *Giardia*, norovirus, and sapovirus. Surface water presence was only
285 associated with carriage of certain enteric bacteria and parasites and not with diarrhea. Under a
286 sustainable development climate change scenario (SSP1), we projected no changes in outcome
287 prevalence. Under middle of the road (SSP2) and fossil fuel-based development scenarios
288 (SSP5), we projected that prevalence was up to 6% higher for diarrhea, up to 33% higher for
289 enteric bacteria – including moderately higher *Shigella* and *Aeromonas*, which are responsible

290 for substantial moderate-to-severe diarrhea in this setting¹⁸ – and up to 13% lower for
291 sapovirus and norovirus.

292

293 Precipitation and diarrhea

294 Above-median weekly precipitation with a 2-week lag was associated with up to 35% higher
295 diarrhea prevalence, but heavy rainfall was associated with lower prevalence of diarrhea. A
296 prior meta-analysis found both positive and negative associations between precipitation and
297 diarrhea risk.²⁸ Generally, heavy rainfall preceded by a dry period has been associated with
298 higher diarrhea risk, while heavy rainfall preceded by a wet period has been associated with
299 lower diarrhea risk. This may be because pathogens concentrate during dry periods and then
300 are flushed into the environment when heavy rainfall occurs (the concentration-dilution
301 hypothesis).²⁸ We were not able to investigate associations with heavy rainfall preceded by a
302 dry vs. wet period because almost all heavy rainfall periods were preceded by rainy days. Taken
303 together, our findings suggest that in our study setting, even moderately higher precipitation
304 was associated with meaningful increases in diarrhea.

305

306 Precipitation and enteropathogens

307 We found that higher precipitation was associated with a higher prevalence of
308 *Cryptosporidium*, adenovirus 40/41, *Aeromonas*, *Shigella*/EIEC, *Campylobacter*, EAEC, tEPEC, ST-
309 ETEC, and STEC and lower prevalence of aEPEC, norovirus, sapovirus, and *Giardia*. A recent
310 meta-analysis of data from 19 LMICs with tropical climates found that higher precipitation was
311 associated with a small decrease in ETEC and *Campylobacter* prevalence and no difference in
312 *Cryptosporidium*, *Shigella*, *Giardia*, or enteric virus prevalence.¹⁰ Our findings may differ due
313 varying background levels of enteropathogen transmission and water and sanitation (WASH)
314 infrastructure in our study compared to those in the review. Pathogen prevalence was similar
315 for viruses, slightly higher for *Campylobacter* and *Cryptosporidium*, and lower for *Giardia* and
316 *Shigella*/EIEC in our study compared to the prior meta-analysis.

317

318 Temperature

319 For temperature, our estimated associations were more modest overall than those from
320 previous studies. We found that an increase in weekly average temperature from 15 to 30° C
321 was associated with approximately 5% higher diarrhea prevalence, 6.4% higher norovirus
322 prevalence, and 13% higher STEC prevalence. One study estimated that a 1° C increase in mean
323 temperature was associated with relative increases of 7% for diarrhea and bacterial diarrhea
324 and no association with viral diarrhea.⁹ Another estimated that an increase from approximately
325 10-40° C in weekly average temperature was associated with higher risk of *Campylobacter*,
326 *ETEC*, *Shigella*, *Cryptosporidium*, *Giardia*, and adenovirus and lower risk of sapovirus and
327 rotavirus, and generally associations were stronger.¹⁰ Our more modest estimates may reflect
328 differing background levels of enteropathogen transmission, co-varying environmental
329 conditions, and WASH infrastructure. Our findings reinforce that relationships between
330 temperature and enteropathogen carriage are heterogeneous within taxa. While higher water
331 temperatures may reduce the concentration of some enteropathogens in surface water by
332 increasing inactivation, bacteria may grow more quickly in higher temperatures,²⁹ and higher
333 temperatures could increase pathogen survival on land, in surface water, and in aquifers.⁶

334

335 Climate

336 Our estimate that diarrhea prevalence would increase by 5.7% by 2050 under SSP5 (fossil-fuel
337 based development) is similar to previous estimates of 7% in six geographic regions, 8% in
338 Nepal, and 3-10% in the Gaza Strip;^{11,13,16} diarrhea prevalence in our study site was similar to
339 that in the Gaza Strip and lower than that in Nepal. Under SSP2 and SSP5, we estimated 13%
340 higher *Shigella spp./EIEC* and 18-20% higher *Aeromonas* prevalence; these pathogens are
341 responsible for 64% of moderate-to-severe diarrhea among children 12-24 months and 86%
342 among children 24-59 months in our setting.¹⁸ Though we projected small decreases in
343 norovirus and sapovirus burden under SSP2 and SSP5, in prior research, neither were strongly
344 associated with moderate-to-severe diarrhea in children in Bangladesh.¹⁸ Climate change could
345 increase or decrease individual enteropathogen prevalence due to the diversity of pathogen
346 survival and inactivation processes across species.⁶

347

348 For all outcomes, prevalence was similar during the study period and predicted under SSP 1
349 (sustainable development). This is likely because the mean precipitation per rainy day was
350 nearly the same during the study vs. under SSP1 even though there were more rainy days
351 during the study. In settings with differing precipitation distributions under climate change,
352 diarrhea and enteropathogen prevalence projections may be lower under SSP1.

353

354 A unique strength of our study is that we matched predictions under climate change by
355 household location and month to capture fine-scale heterogeneity in the relationship between
356 precipitation and each outcome. Prior studies have used single measures of association
357 between temperature and diarrhea risk,^{11,14,15,17} but associations likely vary across settings.
358 Further, our study captured intra-annual heterogeneity in precipitation projections under
359 climate change, while most previous studies used annual measures (e.g., mean annual
360 temperature).^{11,13–15,17}

361

362 Limitations

363 This study was subject to several limitations. First, in 2014, the original trial did not collect data
364 during peak rainy season (Figure 1), limiting our ability to make inferences about associations
365 with heavy rainfall in that season. Second, we only measured enteropathogens in a subsample,
366 so statistical power was limited for certain analyses; for this reason, we did not consider it
367 feasible to estimate associations with taxa-specific diarrhea (e.g., bacterial diarrhea) as prior
368 studies have done. However, measuring enteropathogen carriage (including asymptomatic and
369 symptomatic infections) sheds light on climate-specific transmission patterns that may not be
370 discernable when restricting to symptomatic cases. Third, the enteropathogen sample included
371 a narrow age range (approximately 14 months); results may not generalize to other ages. Our
372 effect modification analyses may also have had limited statistical power. Finally, relationships
373 between climate, diarrhea, and enteropathogen infection likely vary by climate zone;³⁰ our
374 findings may not hold in settings with differing enteropathogen transmission levels, WASH
375 infrastructure, and climatic characteristics.

376

377 There are numerous sources of uncertainty in climate change and health prediction models. We
378 used projected precipitation from a model that best aligned with our study site, but projections
379 elsewhere could differ substantially. Predictions are sensitive to the estimated association
380 between climate and diarrhea,¹¹ which could vary by location and over time. We were not able
381 to predict prevalence under climate scenarios using temperature because the climate change
382 projection temperature dataset differed substantially from temperature data during the study.
383 Further, our 2050 predictions assume similar levels of WASH infrastructure, population density,
384 and land use as in the study, but we expect these factors to change unpredictably over time.

385

386 Conclusions

387 While diarrhea burden has decreased over time, our findings suggest that progress may be
388 hindered by climate change in the absence of sustainable development. We observed
389 heterogeneous potential impacts of climate change on enteropathogen carriage by pathogen
390 taxa and species. Our findings inform prioritization of pathogen-specific interventions (e.g.,
391 *Shigella* vaccines) for young children in rural, South Asian settings with a similar diarrhea
392 etiology to mitigate the impacts of climate change.

393

394 **Acknowledgments**

395 Research reported in this publication was supported in part by the Bill and Melinda Gates
396 Foundation (grant number OPPGD759 to the University of California, Berkeley and OPP1161946
397 to Stanford University) and the National Institute of Allergy and Infectious Diseases of the
398 National Institutes of Health under Award Numbers K01AI141616 (Jade Benjamin-Chung) and
399 R01AI166671 (Benjamin F. Arnold). Jade Benjamin-Chung is a Chan Zuckerberg Biohub
400 Investigator. Anna T. Nguyen was supported by National Heart, Lung, And Blood Institute of the
401 National Institutes of Health under award number T32HL151323. Jessica A. Grembi was
402 supported by a Stanford University School of Medicine Dean's Postdoctoral Fellowship. The
403 content is solely the responsibility of the authors and does not necessarily represent the official
404 views of the National Institutes of Health. We also acknowledge the Stanford Research
405 Computing Center for computational resources at the Sherlock high-performance cluster.
406

407 **Role of the Funding Source**

408 The finders of the study had no role in study design, data analysis, interpretation, writing of the
409 manuscript, or the decision to submit the manuscript for publication.
410

411 **Authors' Contributions**

412 Jessica A. Grembi: conceptualization, data curation, formal analysis, investigation,
413 methodology, project administration, software, resources, supervision, visualization, writing -
414 original draft
415 Anna T. Nguyen: data curation, formal analysis investigation, methodology, software, writing -
416 review & editing
417 Marie Riviere, Gabriella Barratt Heitmann, Arusha Patil, Tejas S. Athni: visualization, software,
418 writing - review & editing
419 Stephanie Djajadi: data curation, writing - review & editing
420 Md Abdul Karim, Md Ohedul Islam, Rana Miah, Syeda L. Famida, Md Saheen Hossen, Palash
421 Mutsuddi: investigation, data curation, resources, writing - review and editing
422 Shahjahan Ali, Md Ziaur Rahman, Zahir Hussain, Abul K. Shoab: investigation, data curation,
423 supervision, resources, writing - review and editing
424 Rashidul Haque, Mahbubur Rahman, Leanne Unicomb, John M. Colford, Jr., Stephen P. Luby,
425 Ayse Ercumen, Audrie Lin: project administration, supervision, resources, writing - review &
426 editing
427 Yoshika Crider, Andrew Mertens: resources, methodology, writing - review & editing
428 Benjamin F. Arnold: methodology, software, project administration, writing - review & editing
429 Adam Bennett: methodology, data curation, software, writing - review & editing
430 Jade Benjamin-Chung: conceptualization, data curation, formal analysis, funding acquisition,
431 methodology, project administration, resources, supervision, visualization, writing - original
432 draft
433

434 **Ethics Committee Approval**

435 The trial was approved by human subjects committees at the International Centre for Diarrheal
436 Disease Research, Bangladesh (icddr,b; PR- 11063), University of California, Berkeley (2011-09-
437 3652), and Stanford University (25863).

438 **References**

- 439
- 440 1 Vos T, Lim SS, Abbafati C, *et al.* Global burden of 369 diseases and injuries in 204 countries
441 and territories, 1990–2019: a systematic analysis for the Global Burden of Disease Study
442 2019. *The Lancet* 2020; **396**: 1204–22.
- 443 2 Richard SA, Black RE, Gilman RH, *et al.* Diarrhea in Early Childhood: Short-term Association
444 With Weight and Long-term Association With Length. *Am J Epidemiol* 2013; **178**: 1129–38.
- 445 3 Tarleton JL, Haque R, Mondal D, Shu J, Farr BM, Petri WA. Cognitive Effects of Diarrhea,
446 Malnutrition, and Entamoeba Histolytica Infection on School Age Children in Dhaka,
447 Bangladesh. *Am J Trop Med Hyg* 2006; **74**: 475–81.
- 448 4 Rogawski ET, Liu J, Platts-Mills JA, *et al.* Use of quantitative molecular diagnostic methods to
449 investigate the effect of enteropathogen infections on linear growth in children in low-
450 resource settings: longitudinal analysis of results from the MAL-ED cohort study. *The Lancet*
451 *Global Health* 2018; **6**: e1319–28.
- 452 5 MAL-ED Network Investigators. Early childhood cognitive development is affected by
453 interactions among illness, diet, enteropathogens and the home environment: findings from
454 the MAL-ED birth cohort study. *BMJ Global Health* 2018; **3**: e000752.
- 455 6 Sterk A, Schijven J, de Nijs T, de Roda Husman AM. Direct and Indirect Effects of Climate
456 Change on the Risk of Infection by Water-Transmitted Pathogens. *Environ Sci Technol* 2013;
457 **47**: 12648–60.
- 458 7 Mertens A, Balakrishnan K, Ramaswamy P, *et al.* Associations between High Temperature,
459 Heavy Rainfall, and Diarrhea among Young Children in Rural Tamil Nadu, India: A
460 Prospective Cohort Study. *Environmental Health Perspectives* 2019; **127**: 047004–047004.
- 461 8 Levy K, Woster AP, Goldstein RS, Carlton EJ. Untangling the Impacts of Climate Change on
462 Waterborne Diseases: a Systematic Review of Relationships between Diarrheal Diseases and
463 Temperature, Rainfall, Flooding, and Drought. *Environ Sci Technol* 2016; **50**: 4905–22.
- 464 9 Carlton EJ, Woster AP, DeWitt P, Goldstein RS, Levy K. A systematic review and meta-
465 analysis of ambient temperature and diarrhoeal diseases. *International Journal of*
466 *Epidemiology* 2016; **45**: 117–30.
- 467 10 Colston JM, Zaitchik BF, Badr HS, *et al.* Associations Between Eight Earth Observation-
468 Derived Climate Variables and Enteropathogen Infection: An Independent Participant Data
469 Meta-Analysis of Surveillance Studies With Broad Spectrum Nucleic Acid Diagnostics.
470 *GeoHealth* 2022; **6**: e2021GH000452.
- 471 11 Kolstad EW, Johansson KA. Uncertainties Associated with Quantifying Climate Change
472 Impacts on Human Health: A Case Study for Diarrhea. *Environ Health Perspect* 2011; **119**:
473 299–305.

- 474 12 McMichael A, Campbell-Lendrum D, Kovats S, *et al.* Global Climate Change. In: Ezzati M,
475 Lopez A, Rodgers A, Murray C, eds. Comparative Quantification of Health Risks. Geneva:
476 World Health Organization, 2004. <https://apps.who.int/iris/handle/10665/42770>.
- 477 13 Bhandari D, Bi P, Sherchand JB, Dhimal M, Hanson-Easey S. Assessing the effect of climate
478 factors on childhood diarrhoea burden in Kathmandu, Nepal. *International Journal of*
479 *Hygiene and Environmental Health* 2020; **223**: 199–206.
- 480 14 Philipsborn R, Ahmed SM, Brosi BJ, Levy K. Climatic Drivers of Diarrheagenic Escherichia coli
481 Incidence: A Systematic Review and Meta-analysis. *The Journal of Infectious Diseases* 2016;
482 **214**: 6–15.
- 483 15 Moors E, Singh T, Siderius C, Balakrishnan S, Mishra A. Climate change and waterborne
484 diarrhoea in northern India: Impacts and adaptation strategies. *Science of The Total*
485 *Environment* 2013; **468–469**: S139–51.
- 486 16 Hajat S, Gampe D, Sarsour A, Abuzerr S. Climate Change and Diarrhoeal Disease Burdens in
487 the Gaza Strip, Palestine: Health Impacts of 1.5 °C and 2 °C Global Warming Scenarios.
488 *International Journal of Environmental Research and Public Health* 2022; **19**: 4898.
- 489 17 Hales S, Kovats R, Lloyd S, Campbell-Lendrum D. Quantitative risk assessment of the effects
490 of climate change on selected causes of death, 2030s and 2050s. World Health
491 Organization, 2014
492 https://apps.who.int/iris/bitstream/handle/10665/134014/9789241507691_eng.pdf.
- 493 18 Kotloff KL, Nataro JP, Blackwelder WC, *et al.* Burden and aetiology of diarrhoeal disease in
494 infants and young children in developing countries (the Global Enteric Multicenter Study,
495 GEMS): a prospective, case-control study. *The Lancet* 2013; **382**: 209–22.
- 496 19 Luby S, Rahman M, Arnold B, *et al.* Effects of water quality, sanitation, handwashing and
497 nutritional interventions on diarrhoea and child growth in rural Bangladesh: A cluster
498 randomized trial. *Lancet Global Health* 2018; **6**: e302–15.
- 499 20 Wan Z, Hook S, Hulley G. MOD11A1 MODIS/Terra Land Surface Temperature/Emissivity
500 Daily L3 Global 1km SIN Grid V006. 2015. DOI:10.5067/MODIS/MOD11A1.006.
- 501 21 Chen M, Shi W, Xie P, *et al.* Assessing objective techniques for gauge-based analyses of
502 global daily precipitation. *Journal of Geophysical Research: Atmospheres* 2008; **113**.
503 DOI:<https://doi.org/10.1029/2007JD009132>.
- 504 22 Pekel J-F, Cottam A, Gorelick N, Belward AS. High-resolution mapping of global surface
505 water and its long-term changes. *Nature* 2016; **540**: 418–22.
- 506 23 Abatzoglou JT, Dobrowski SZ, Parks SA, Hegewisch KC. TerraClimate, a high-resolution global
507 dataset of monthly climate and climatic water balance from 1958–2015. *Sci Data* 2018; **5**:
508 170191.

- 509 24 Nguyen A, Grembi JA, Riviere M, *et al.* Influence of climate and environment on the efficacy
510 of water, sanitation, and handwashing interventions on diarrheal disease in rural
511 Bangladesh: a re-analysis of a randomized control trial. *Submitted*.
- 512 25 Marra G, Wood SN. Coverage Properties of Confidence Intervals for Generalized Additive
513 Model Components: Coverage properties of GAM intervals. *Scandinavian Journal of*
514 *Statistics* 2012; **39**: 53–74.
- 515 26 Riahi K, van Vuuren DP, Kriegler E, *et al.* The Shared Socioeconomic Pathways and their
516 energy, land use, and greenhouse gas emissions implications: An overview. *Global*
517 *Environmental Change* 2017; **42**: 153–68.
- 518 27 Grembi JA, Lin A, Karim MA, *et al.* Effect of water, sanitation, handwashing and nutrition
519 interventions on enteropathogens in children 14 months old: a cluster-randomized
520 controlled trial in rural Bangladesh. *J Infect Dis* 2020. DOI:10.1093/infdis/jiaa549.
- 521 28 Kraay ANM, Man O, Levy MC, Levy K, Ionides E, Eisenberg JNS. Understanding the Impact of
522 Rainfall on Diarrhea: Testing the Concentration-Dilution Hypothesis Using a Systematic
523 Review and Meta-Analysis. *Environmental Health Perspectives* 2020; **128**: 126001.
- 524 29 Hofstra N. Quantifying the impact of climate change on enteric waterborne pathogen
525 concentrations in surface water. *Current Opinion in Environmental Sustainability* 2011; **3**:
526 471–9.
- 527 30 Dimitrova A, McElroy S, Levy M, Gershunov A, Benmarhnia T. Precipitation variability and
528 risk of infectious disease in children under 5 years for 32 countries: a global analysis using
529 Demographic and Health Survey data. *The Lancet Planetary Health* 2022; **6**: e147–55.
- 530

Table 1. Study participant characteristics

	Diarrhea cohort	Pathogens cohort
Children	4,478	1,408
Observations	7,320	1,408
Year of measurement		
2012	491 (6.7%)	0 (0.0%)
2013	2,680 (36.6%)	19 (1.3%)
2014	1,868 (25.5%)	1,389 (98.7%)
2015	2,170 (29.6%)	0 (0.0%)
2016	111 (1.5%)	0 (0.0%)
Mean age, months (SD)	22.6 (11.8)	14.0 (2.0)
Antibiotics consumed in the past week	-- ^a	233 (16.5%)
Season		
Rainy	3,408 (46.6%)	620 (44.0%)
Dry	3,912 (53.4%)	788 (56.0%)
Intervention arm in original trial		
Control	7,320 (100.0%)	328 (23.3%)
Water	0 (0.0%)	0 (0.0%)
Sanitation	0 (0.0%)	0 (0.0%)
Handwashing	0 (0.0%)	0 (0.0%)
WSH	0 (0.0%)	368 (26.1%)
Nutrition	0 (0.0%)	352 (25.0%)
Nutrition + WSH	0 (0.0%)	360 (25.6%)

^a Not measured

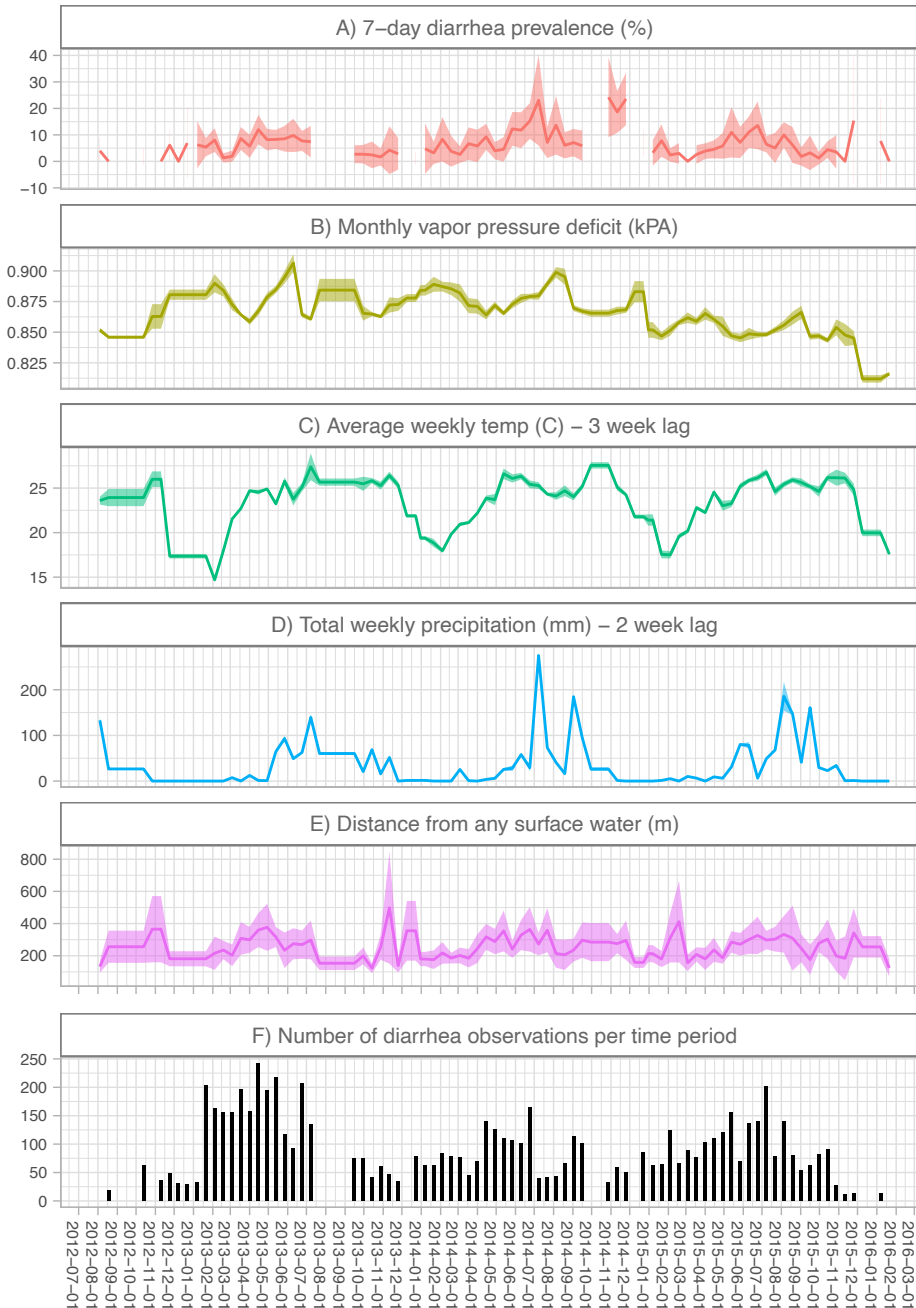


Figure 1. Time trends in risk factors, diarrhea prevalence, and number of observations
Shaded bands indicate 95% confidence intervals using robust sandwich standard errors to account for clustering within study clusters. Estimates excludes biweekly periods when the number of observations was <10. Panel A) includes diarrhea measurements from the control arms of the original trial. Breaks in the line indicate periods when the study did not collect data on diarrhea status. In panels B) to E), we display the risk factor values that corresponded to the diarrhea measurements in our analysis. For periods when there was no diarrhea data collection, we display the risk factor values for the next biweekly period with at least diarrhea measurements. Panel G) displays the number of diarrhea observations in each biweekly period.

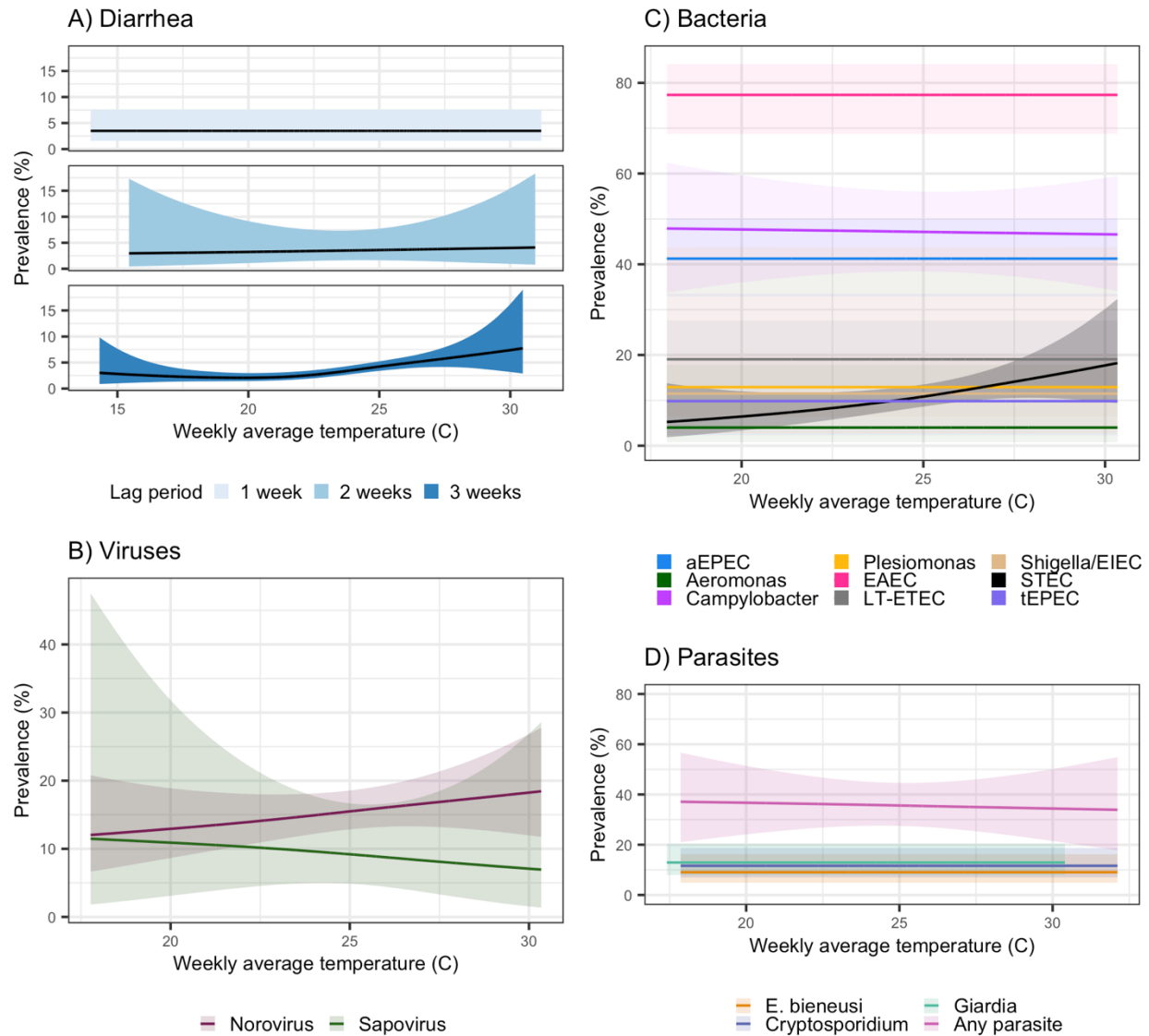


Figure 2. Diarrhea and enteropathogen prevalence by weekly average temperature

All panels present unadjusted models; shaded bands indicate simultaneous 95% confidence intervals accounting for clustering. Panel A) includes diarrhea measurements in children aged 6 months - 5.5 years in the control arms in the original trial. Panels B-D) include measurements in children approximately 14 months of age in the control, combined water + sanitation + handwashing (WASH), nutrition, and combined nutrition + WASH arms of the original trial. We present results for the lag periods that best aligned with the incubation period for each outcome (Appendix 7); results with alternative lag periods are in Figure A2. Results not shown for any virus, adenovirus 40/41, or ST-EPEC due to very low precision of model estimates.

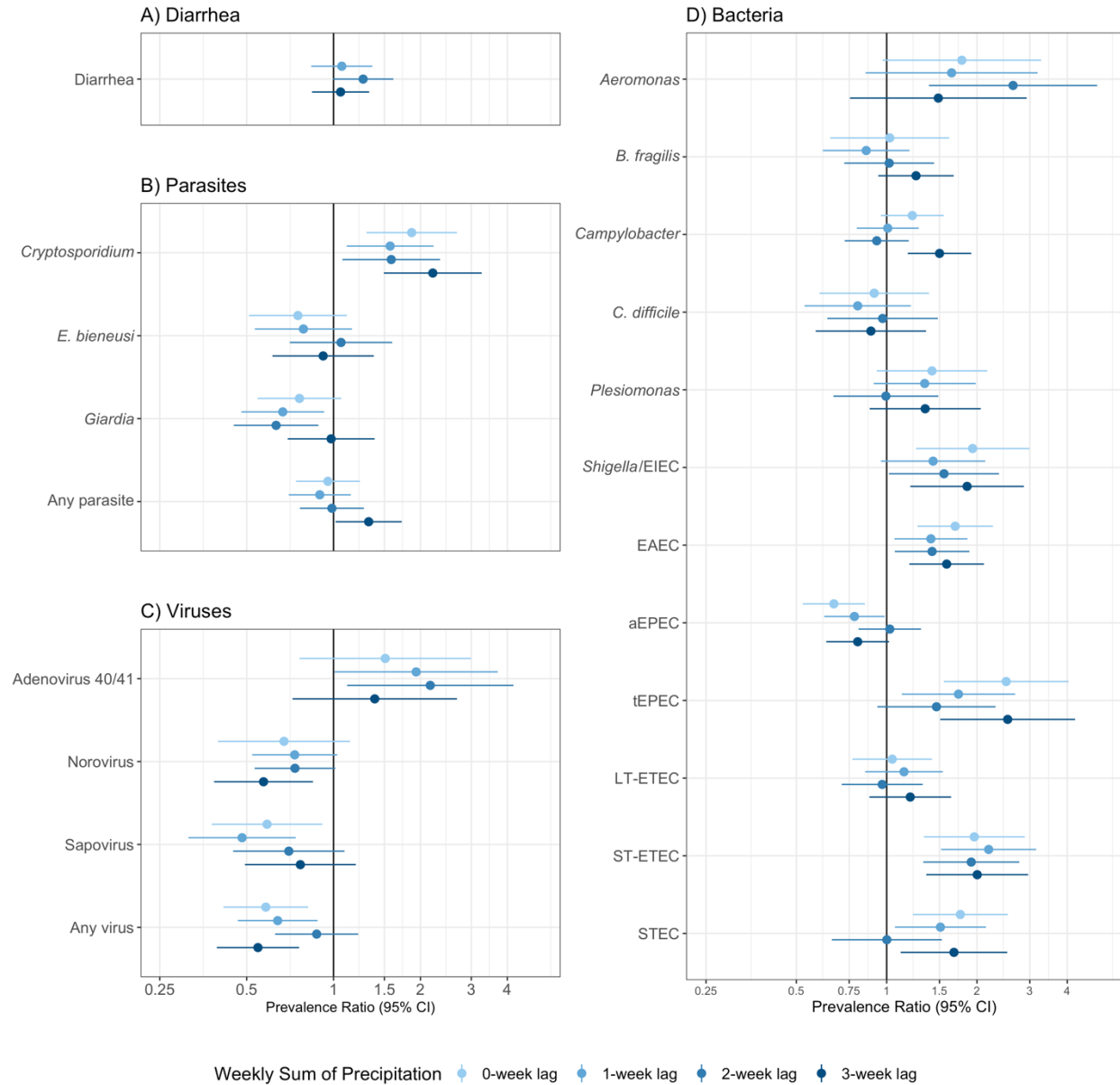


Figure 3. Diarrhea and enteropathogen prevalence by average weekly precipitation

All panels present unadjusted models including an indicator for above median average weekly precipitation as the independent variable; adjusted models produced similar results. Error bars present 95% confidence intervals adjusted for clustering. Panel A) includes diarrhea measurements in children aged 6 months - 5.5 years in the control arms in the original trial. Panels B-D) include measurements in children approximately 14 months of age in the control, combined water + sanitation + handwashing (WASH), nutrition, and combined nutrition + WASH arms of the original trial.

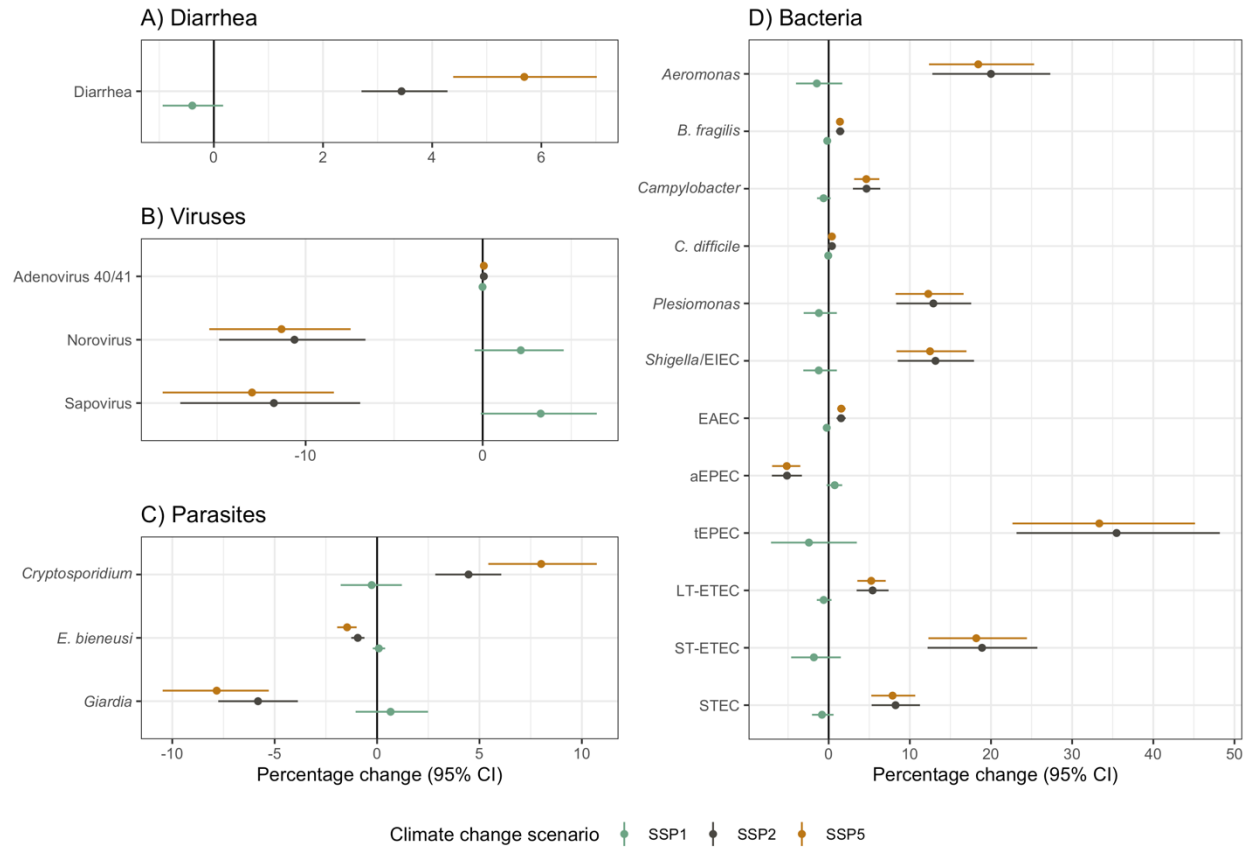


Figure 4. Percentage change in diarrhea and enteropathogen prevalence under climate change scenarios

Colors indicate Shared Socioeconomic Pathway scenarios: SSP1: sustainable development (SSP1); middle of the road (SSP2); and fossil fuel-based development (SSP5). Point estimates display relative percentage changes in outcome prevalence in each scenario in 2050 compared to prevalence during the study period. Error bars indicate 95% confidence intervals estimated with a clustered bootstrap with 1,000 replicates. Point estimates with small counterfactual shifts in the precipitation distribution produced narrower confidence intervals. Panel A) includes diarrhea measurements in children aged 6 months - 5.5 years in the control arms in the original trial. Panels B-D) include measurements in children approximately 14 months of age in the control, combined water + sanitation + handwashing (WASH), nutrition, and combined nutrition + WASH arms of the original trial. We present results for the lag periods that best aligned with the incubation period for each outcome (Appendix 7); results with alternative lag periods are in Figures A11-13.