

Long-term mental health outcomes after SARS-CoV-2 infection: prospective cohort study

Table of Contents	Page
SUPPLEMENTARY FIGURES	
Supplementary Figure 1. Distribution of SARS-CoV-2 infections in the UK Biobank over the study period	1
Supplementary Figure 2. Risks of first or recurrent psychiatric diagnoses and prescriptions for psychotropic medications after SARS-Cov-2 infection compared with the contemporary control group	2
Supplementary Figure 3. Risks of first psychiatric diagnoses and prescriptions for psychotropic medications after SARS-CoV-2 infection compared with the historical control group	3
Supplementary Figure 4. Risks of first or recurrent psychiatric diagnoses and prescriptions for psychotropic medications after SARS-CoV-2 infection compared with the historical control group	4
Supplementary Figure 5. Risks of composite mental health outcomes after SARS-CoV-2 infection compared with the historical control group	5
SUPPLEMENTARY TABLES	
Supplementary Table 1. Definition of mental health related outcomes	6
Supplementary Table 2. Demographic and medical characteristics of SARS-CoV-2 infection, contemporary control, and historical control cohorts before weighting	8
Supplementary Table 3. Risks of first composite mental health outcomes in participants with breakthrough infection compared with non-breakthrough infection	10
Supplementary Table 4. Risks of first composite mental health outcomes in participants who tested positive in hospital setting compared with those who tested positive in community setting	11
Supplementary Table 5. Risks of first composite mental health outcomes in SARS-CoV-2 infection group compared with the control groups of respiratory tract infection or the test-negative control groups	12
Supplementary Table 6. Sensitivity analyses for the risks of first composite mental health outcomes in infection group compared with contemporary control groups	13

Supplementary Figure 1. Distribution of SARS-CoV-2 infections in the UK Biobank over the study period

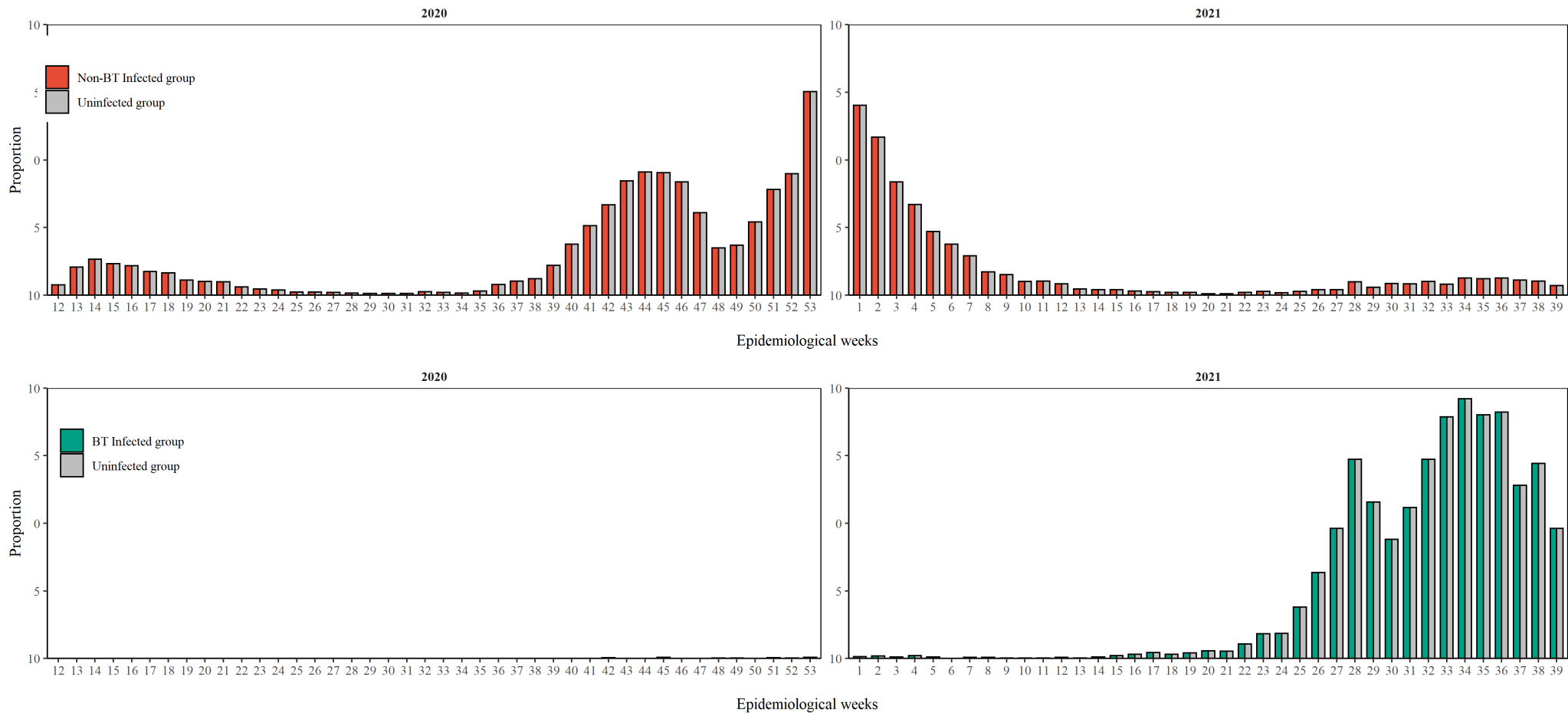
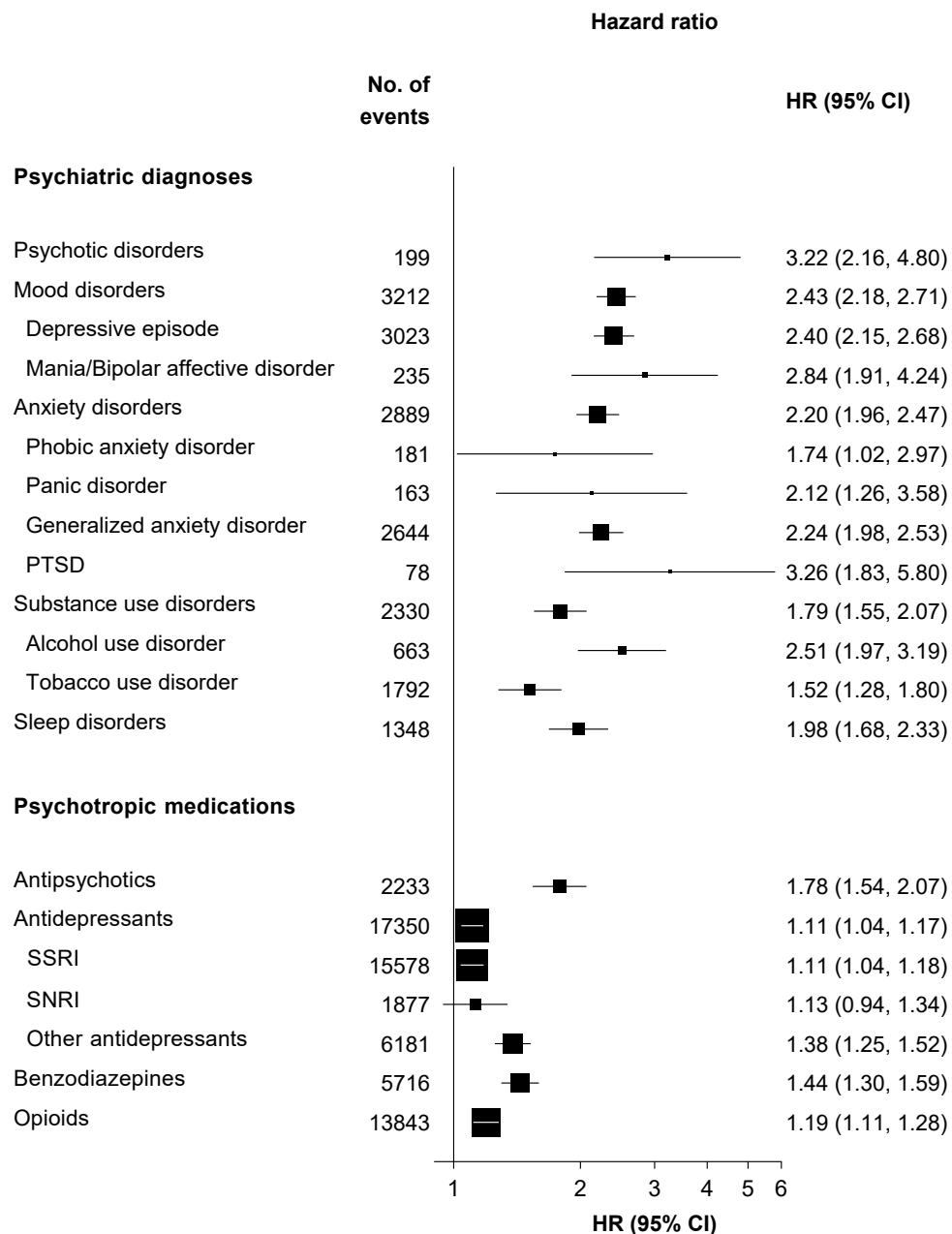
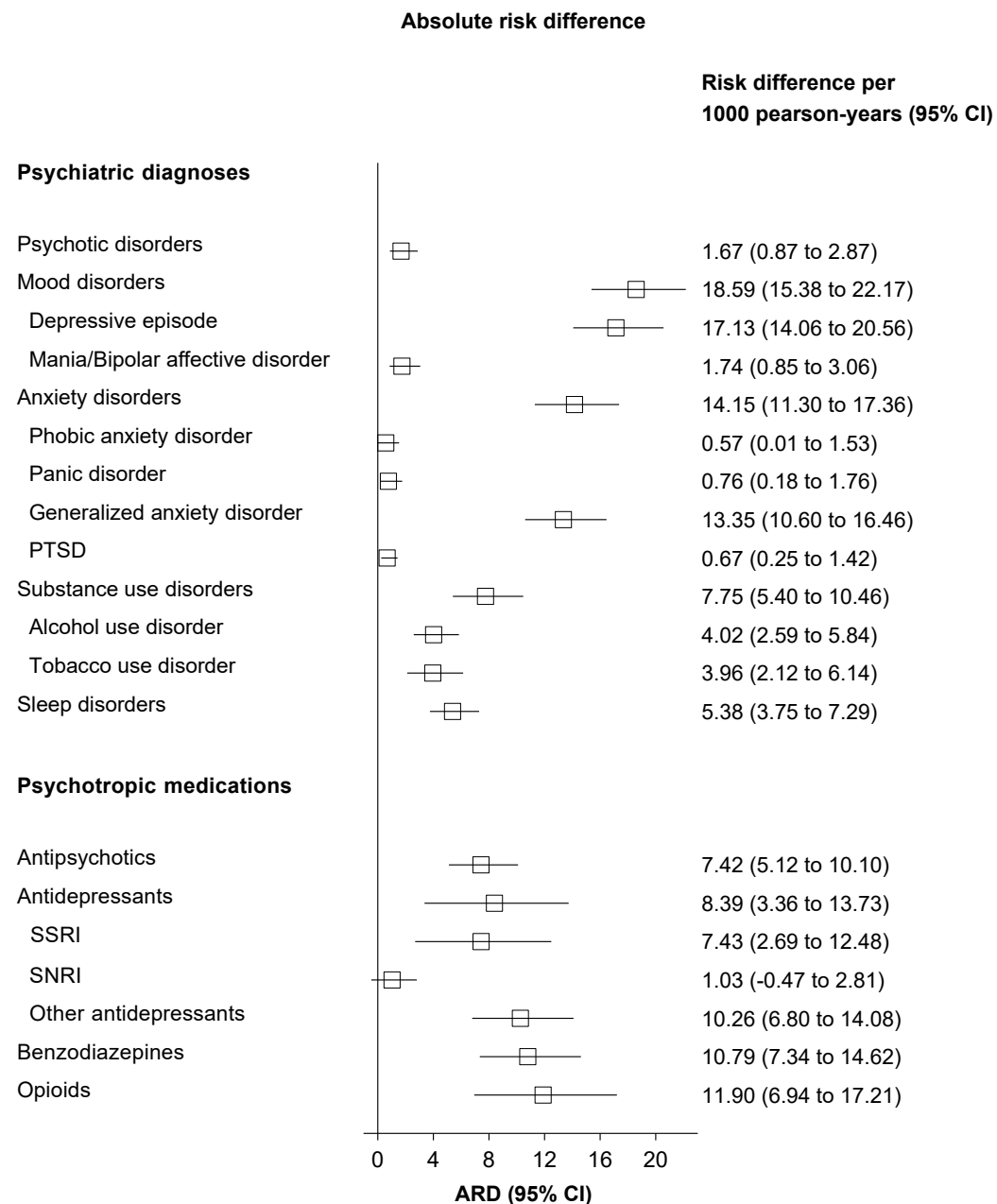


Figure S2. Risks of first or recurrent psychiatric diagnoses and prescriptions for psychotropic medications after SARS-CoV-2 infection compared with the contemporary control group

A



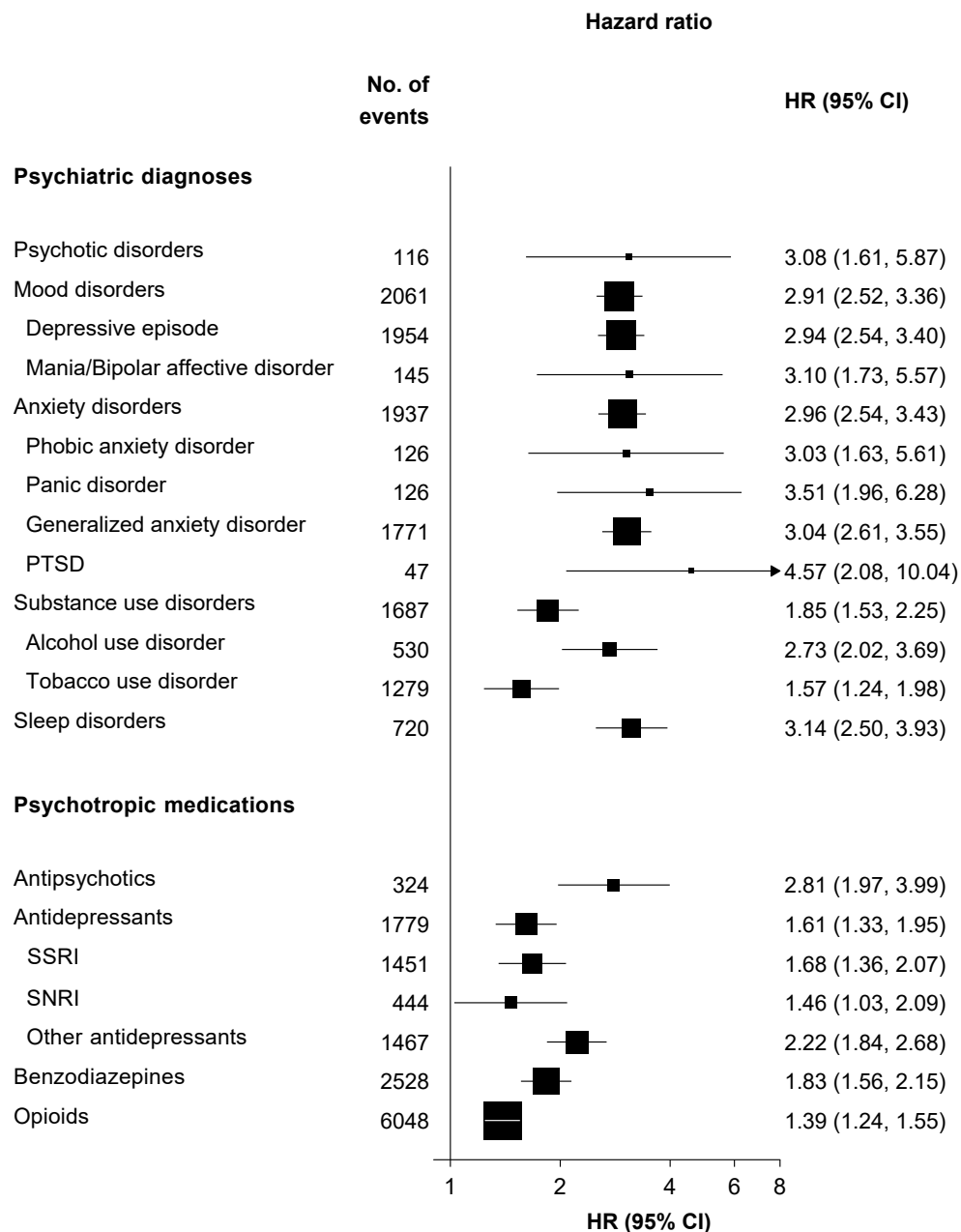
B



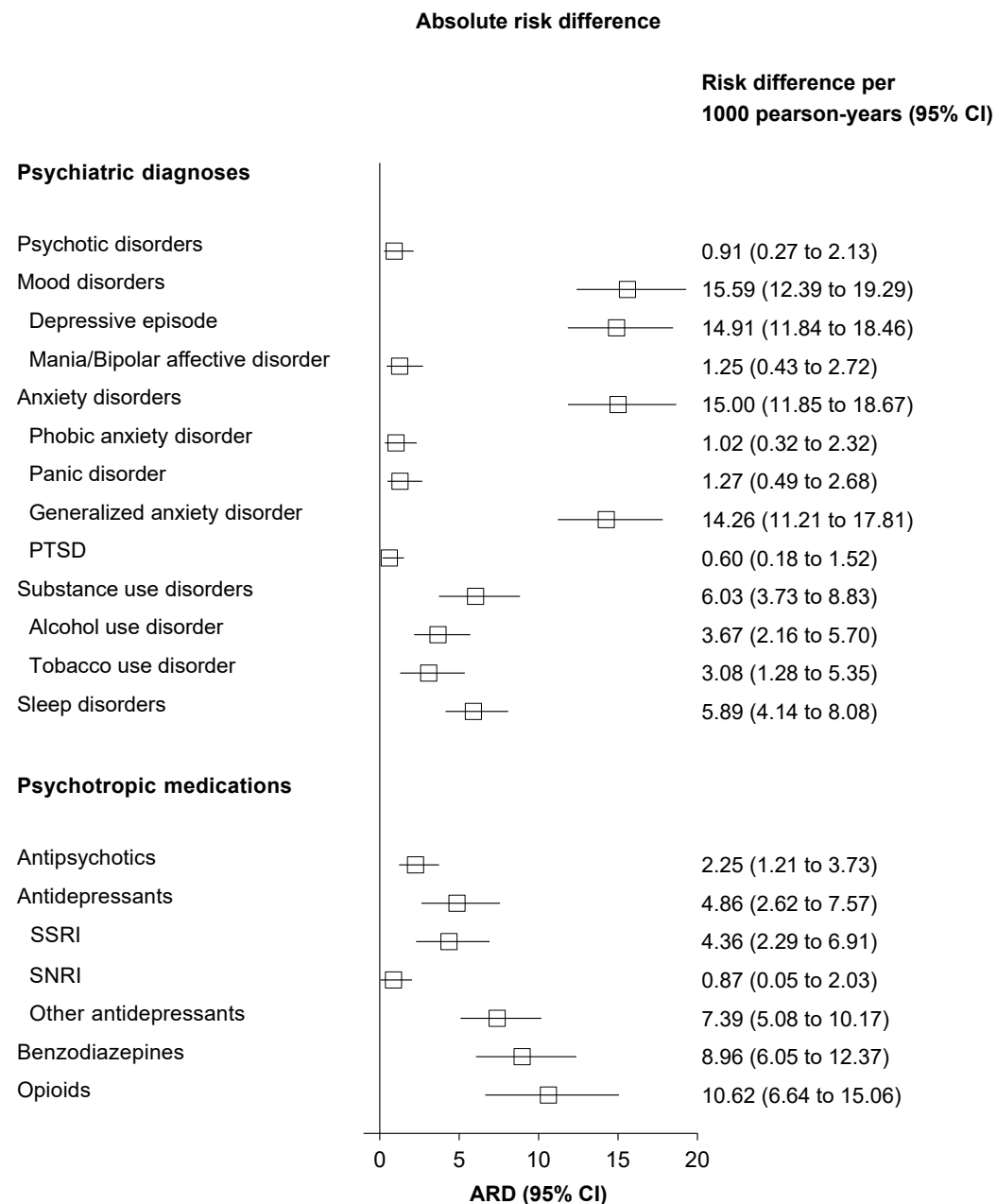
Mental health outcomes were ascertained after the SARS-CoV-2 infection until the end of follow-up. Hazard ratios were adjusted for predefined and data-driven covariates. SSRI=selective serotonin reuptake inhibitor; SNRI =serotonin-noradrenaline reuptake inhibitor.

Figure S3. Risks of first psychiatric diagnoses and prescriptions for psychotropic medications after SARS-CoV-2 infection compared with the historical control group

A



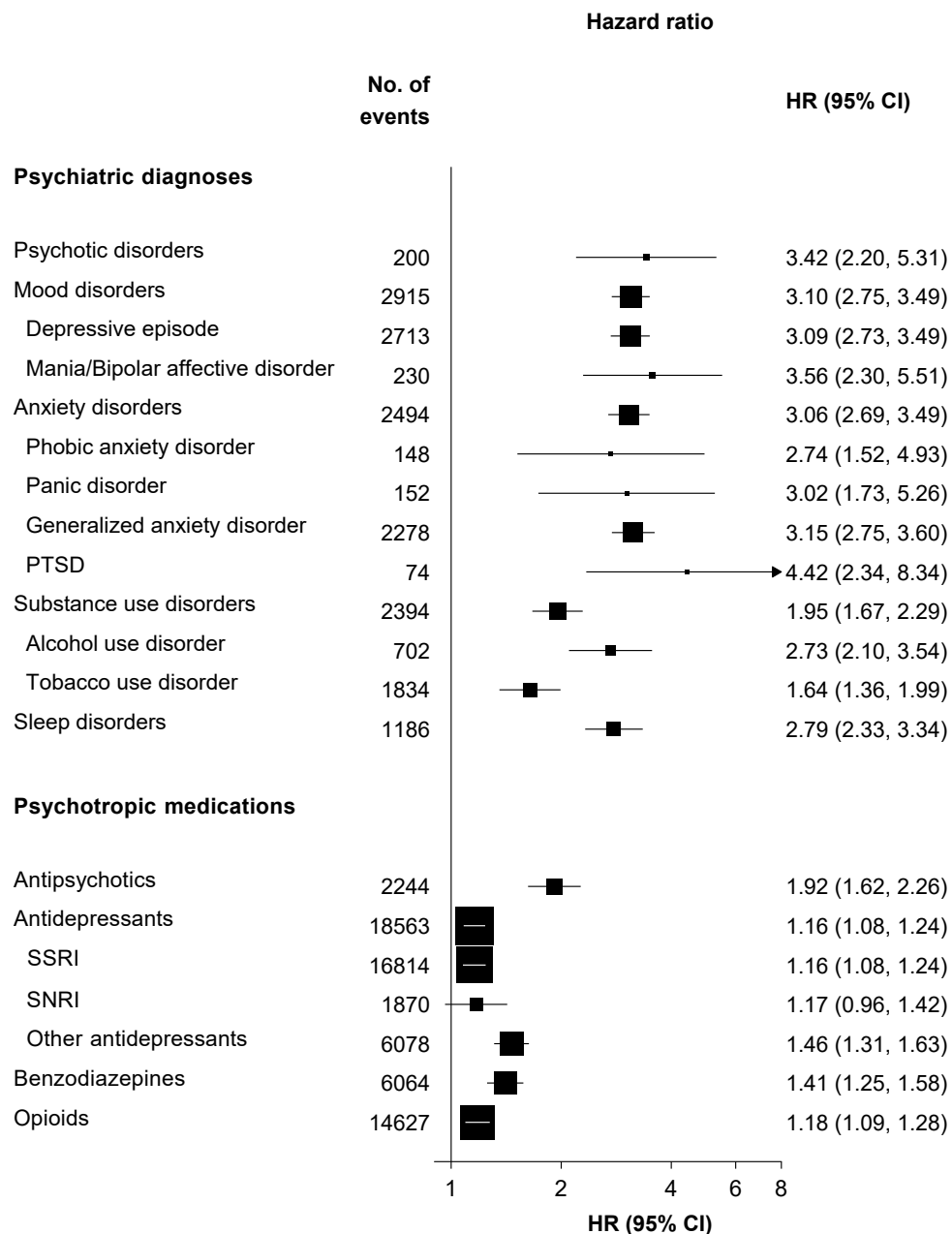
B



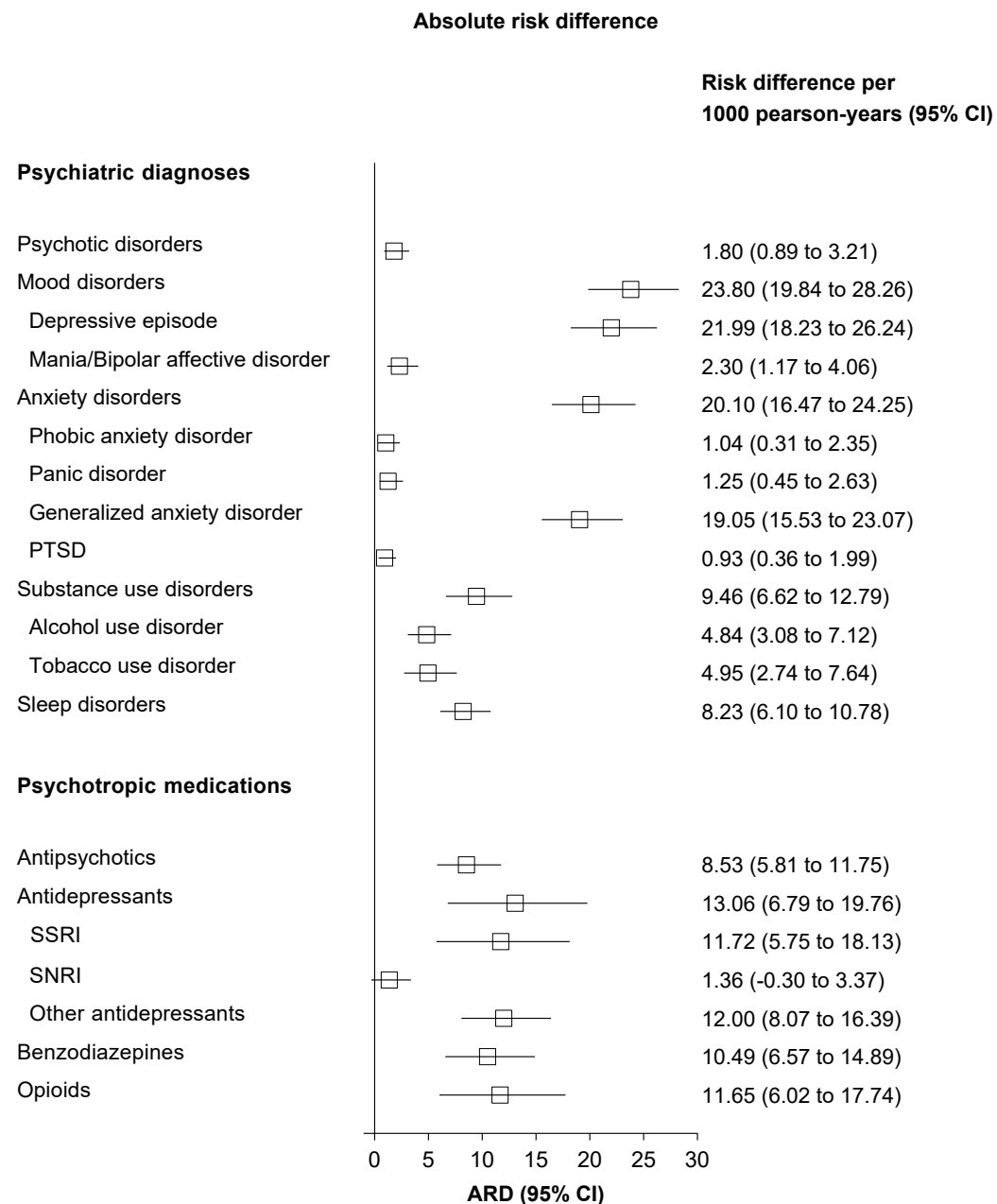
Mental health outcomes were ascertained after the SARS-CoV-2 infection until the end of follow-up. Hazard ratios were adjusted for predefined and data-driven covariates. SSRI=selective serotonin reuptake inhibitor; SNRI =serotonin-noradrenaline reuptake inhibitor.

Figure S4. Risks of first or recurrent psychiatric diagnoses and prescriptions for psychotropic medications after SARS-CoV-2 infection compared with the historical control group

A



B

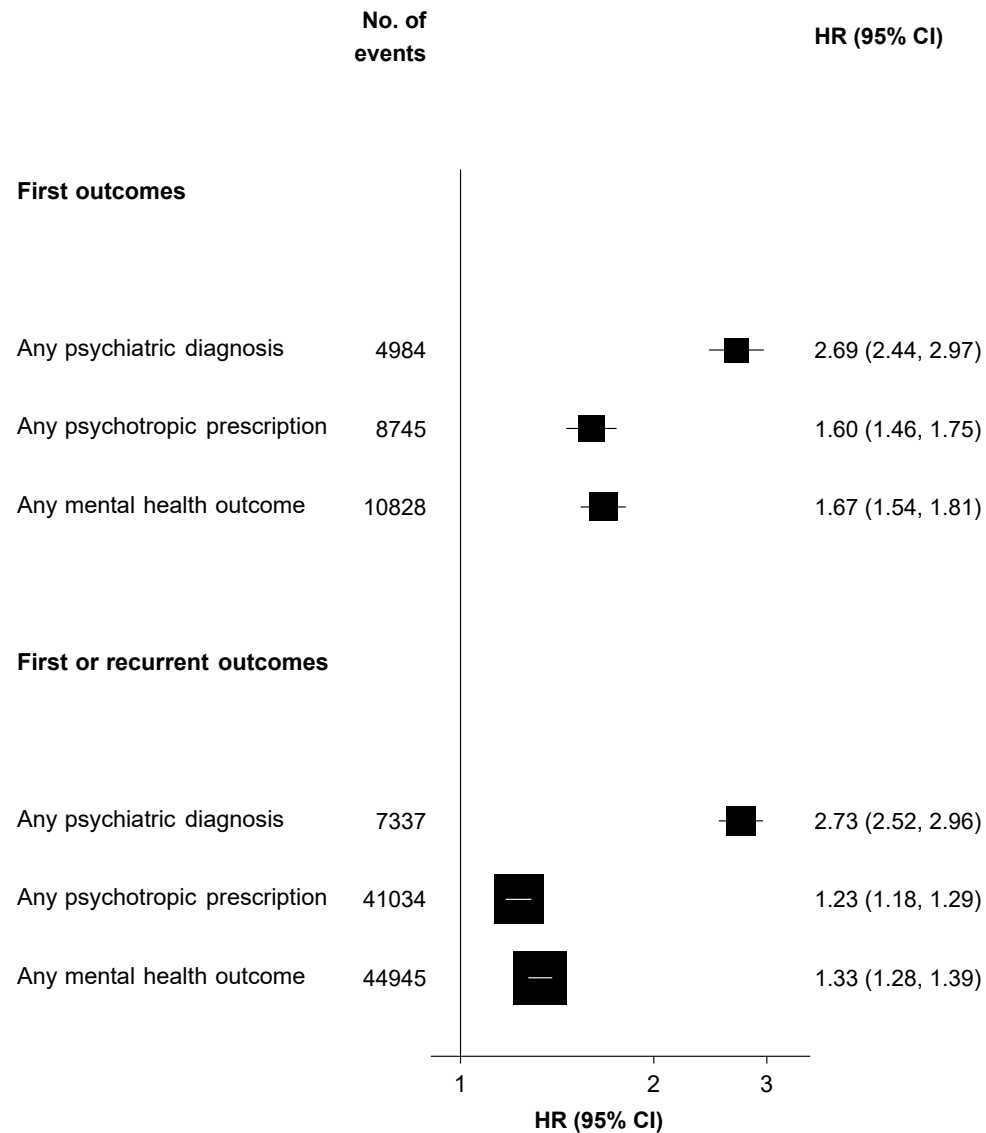


Mental health outcomes were ascertained after the SARS-CoV-2 infection until the end of follow-up. Hazard ratios were adjusted for predefined and data-driven covariates. SSRI=selective serotonin reuptake inhibitor; SNRI =serotonin-noradrenaline reuptake inhibitor.

Figure S5. Risks of composite mental health outcomes after SARS-CoV-2 infection compared with the historical control group

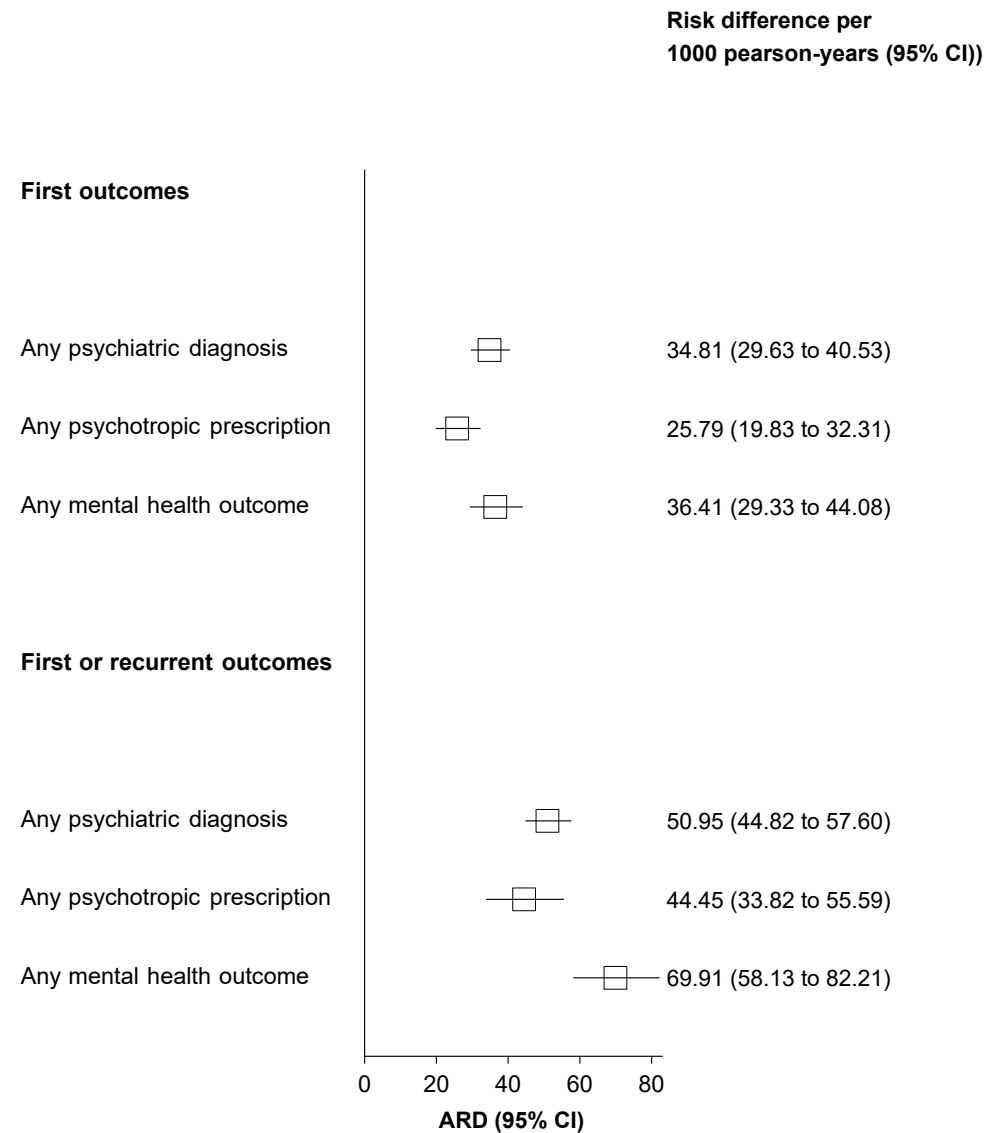
A

Hazard ratio



B

Absolute risk difference



Mental health outcomes were ascertained after the SARS-CoV-2 infection until the end of follow-up. Hazard ratios were adjusted for predefined and data-driven covariates.

Supplementary Table 1. Definition of mental health related outcomes

Outcome	Type of definition	Definition
Psychiatric diagnoses		
Psychotic disorders	ICD-10	F20-F29
Mood disorders	ICD-10	F30-F39
Mania/Bipolar affective disorder	ICD-10	F30-F31
Depressive episode	ICD-10	F32
Anxiety disorders	ICD-10	F40-F48
Phobic anxiety disorders	ICD-10	F40
Panic disorder	ICD-10	F41.0
Generalized anxiety disorder	ICD-10	F41.1
Posttraumatic stress disorder	ICD-10	F43.1
Substance use disorders	ICD-10	F10-F19
Illicit drug use disorder	ICD-10	F12, F14-F16, F18-F19
Alcohol use disorder	ICD-10	F10
Tobacco use disorder	ICD-10	F17
Sedative/hypnotics use disorder	ICD-10	F13
Sleep disorders	ICD-10	F51, G47
Prescriptions for psychotropic medications		
Antipsychotics	Medication	Amisulpride, Aripiprazole, Clozapine, Olanzapine, Paliperidone, Quetiapine, Risperidone
Antidepressant	Medication	Any SSRI, SNRI, or other antidepressant medications
SSRI	Medication	Citalopram, Escitalopram, Dapoxetine, Escitalopram, Fluoxetine, Fluvoxamine, Paroxetine, Sertraline, Vortioxetine, Trazodone
SNRI	Medication	Venlafaxine, Duloxetine, Milnacipran
Other antidepressant drugs	Medication	Flupentixol, Doxepin, Bupropion, Amoxapine, Maprotiline, Mianserin, Mirtazapine
Benzodiazepines	Medication	Diazepam, Nitrazepam, Lorazepam, Flurazepam, Temazepam, Flunitrazepam, Alprazolam, Clobazam, Clonazepam, Chlordiazepoxide, Lormetazepam, Oxazepam, Midazolam
Opioids		
Opioid prescription	Medication	Codeine, Hydromorphone, Morphine, Opium, Oxycodone, Alfentanil, Dihydrocodeine,

		Diphenoxylate, Fentanyl, Remifentanyl, Pentazocine, Tramadol, Nalbuphine
Opioid use disorder	ICD-10	F11
Naloxone or naltrexone	Medication	Naloxone or naltrexone
Methadone	Medication	Methadone
Buprenorphine	Medication	Buprenorphine
Composite outcomes		
Any psychiatric diagnosis	Composite	Any ICD-10 code listed
Any prescriptions for psychotropic medications	Composite	Any psychotic medication listed
Any mental health related conditions	Composite	Any ICD-10 code or psychotic medication listed

Supplementary Table 2. Demographic and medical characteristics of SARS-CoV-2 infection, contemporary control, and historical control cohorts before weighting

Characteristics	SARS-Cov-2 infection (n=26181)	Contemporary control (n=380398)	Historical control (n=384030)	ASMD between infection and contemporary control*	ASMD between infection and historical control*
Age, mean (sd)	66.0 (8.5)	68.8 (8.1)	67.87 (8.06)	0.34	0.23
Sex, male (%)	12340 (47.1)	169377 (44.5)	171447 (44.6)	0.05	0.05
Ethnicity, White (%)	22151 (84.6)	356546 (93.7)	360042 (93.8)	0.30	0.30
Index of Multiple Deprivation, mean (sd)	20.5 (14.9)	17.3 (13.7)	17.3 (13.75)	0.22	0.22
Body Mass Index, mean (sd)	28.1 (5.0)	27.3 (4.7)	27.3 (4.71)	0.17	0.16
Current smoker (%)	2843 (10.9)	36704 (9.6)	37312 (9.7)	0.01	0.23
Current drinker (%)	23771 (90.8)	349770 (91.9)	352987 (91.9)	0.11	0.05
Physical activity, high level (%) [#]	8554 (32.7)	124637 (32.8)	125638 (32.7)	0.05	0.06
Vaccination status, fully-vaccinated (%)	9739 (37.2)	149496 (39.3)	NA	0.04	NA
Medications (%) [†]					
Lipid lowering drugs	8704 (33.2)	135512 (35.6)	132446 (34.5)	0.05	0.03
RAS inhibitors	6096 (23.3)	91022 (23.9)	90264 (23.5)	0.02	0.01
Other anti-hypertensives	2882 (11.0)	41046 (10.8)	41577 (10.8)	0.01	0.01
Anticoagulants	1120 (4.3)	16278 (4.3)	15207 (4.0)	0.01	0.02
Antiplatelet drugs	3030 (11.6)	42694 (11.2)	42483 (11.1)	0.01	0.02
Proton pump inhibitors	8491 (32.4)	110972 (29.2)	107396 (28.0)	0.07	0.10
Diabetes medicines	2235 (8.5)	25491 (6.7)	25392 (6.6)	0.07	0.07
Systemic glucocorticoids	1746 (6.7)	19850 (5.2)	24417 (6.4)	0.06	0.01
Immunosuppressants	341 (1.3)	4734 (1.2)	4772 (1.2)	0.01	0.01
Antineoplastic agents	36 (0.1)	437 (0.1)	407 (0.1)	0.01	0.01
Coexisting conditions (%) [†]					
Acquired immunodeficiency syndrome	27 (0.1)	394 (0.1)	384 (0.1)	0.01	0.01
Cancer	2419 (9.2)	40851 (10.7)	39391 (10.3)	0.05	0.03
Cerebrovascular disease	625 (2.4)	8811 (2.3)	8289 (2.2)	0.01	0.02
Chronic obstructive pulmonary disease	4807 (18.4)	62961 (16.6)	62416 (16.3)	0.05	0.06
Chronic kidney disease	1399 (5.3)	20033 (5.3)	18945 (4.9)	0.01	0.02

Congestive heart failure	506 (1.9)	5659 (1.5)	5066 (1.3)	0.03	0.05
Dementia	485 (1.9)	3025 (0.8)	2551 (0.7)	0.09	0.11
Diabetes (uncomplicated)	2952 (11.3)	36070 (9.5)	34821 (9.1)	0.06	0.07
Diabetes (end-organ damage)	961 (3.7)	11413 (3.0)	10927 (2.8)	0.04	0.05
Hemiplegia	36 (0.1)	415 (0.1)	417 (0.1)	0.01	0.01
Liver disease	220 (0.8)	2823 (0.7)	2750 (0.7)	0.01	0.01
Peptic ulcer	703 (2.7)	8900 (2.3)	8855 (2.3)	0.02	0.02
Rheumatoid arthritis	818 (3.1)	11262 (3.0)	10712 (2.8)	0.01	0.02
Blood pressure, mean (sd), mm Hg					
Systolic blood pressure	82.1 (10.6)	82.1 (10.5)	82.1 (10.5)	0.01	0.01
Diastolic blood pressure	137.4 (18.8)	139.5 (19.3)	139.5 (19.3)	0.11	0.11
Hospital admissions, mean (sd) [†]	0.58 (2.79)	0.37 (1.85)	0.43 (2.02)	0.09	0.06

Abbreviations: SD, standard deviation; MET, metabolic equivalent of task; ASMD, absolute standardized mean difference.

Physical activity status was measured by the International Physical Activity Questionnaire (IPAQ).

[†]Data collected within past one year of T₀ from primary care records.

*ASMD ≤0.10 is considered good balance between comparison groups.

Supplementary Table 3. Risks of first composite mental health outcomes in participants with breakthrough infection compared with non-breakthrough infection

Outcome	Hazard ratio (95% CI)	Incidence rate per 1000 people at one year (95% CI)		Difference in incidence rate per 1000 people at one year (95% CI)
		Breakthrough infection	Non-breakthrough infection	
Any psychiatric diagnosis	0.26 (0.18-0.36)	40.95 (38.01-44.05)	51.60 (50.55-52.68)	-
Any psychotropic prescription	0.47 (0.33-0.66)	45.51 (42.23-48.98)	69.13 (67.83-70.44)	-
Any mental health related outcome	0.41 (0.30-0.56)	64.49 (60.55-68.63)	90.35 (88.84-91.87)	-

Mental health outcomes were ascertained after the SARS-CoV-2 infection until the end of follow-up. Hazard ratios were adjusted for predefined and data-driven covariates.

Supplementary Table 4. Risks of first composite mental health outcomes in participants who tested positive in hospital setting compared with those who tested positive in community setting

Outcome	Hazard ratio (95% CI)	Incidence rate per 1000 people at one year (95% CI)		Difference in incidence rate per 1000 people at one year (95% CI)
		Hospital setting	Community setting	
Any psychiatric diagnosis	3.60 (2.98-4.45)	133.14 (128.65-137.74)	38.41 (37.48-39.36)	-
Any psychotropic prescription	2.22 (1.82-2.67)	124.97 (120.44-129.63)	58.00 (56.78-59.24)	-
Any mental health related outcome	1.96 (1.64-2.34)	151.00 (145.80-156.34)	78.90 (77.47-80.36)	-

Mental health outcomes were ascertained after the SARS-CoV-2 infection until the end of follow-up. Hazard ratios were adjusted for predefined and data-driven covariates.

Supplementary Table 5. Risks of first composite mental health outcomes in SARS-CoV-2 infection group compared with the control groups of respiratory tract infection or the test-negative control groups

Control groups	Any first psychiatric diagnoses (95% CI)		Any psychotropic prescriptions (95%)		Any mental health related outcomes (95% CI)	
	HR	ARD	HR	ARD	HR	ARD
Any respiratory tract infection	0.79 (0.67-0.93)	-13.13 (-20.60 to -4.33)	0.79 (0.68-0.92)	-17.70 (-27.39 to -6.35)	0.74 (0.64-0.84)	-31.61 (-42.91 to -18.64)
Test-negative	0.67 (0.61-0.73)	-24.48 (-28.69 to -19.87)	0.94 (0.86-1.02)	-4.64 (-10.24 to 1.47)	0.75 (0.70-0.81)	-29.01 (-35.47 to -22.03)

Supplementary Table 6. Sensitivity analyses for the risks of first composite mental health outcomes in infection group compared with contemporary control groups

Analysis	Any first psychiatric diagnoses (95% CI)		Any psychotropic prescriptions (95%)		Any mental health related outcomes (95% CI)	
	HR	ARD	HR	ARD	HR	ARD
Using PS matching	1.87 (1.72-2.04)	-	1.49 (1.37-1.62)	-	1.48 (1.37-1.59)	-
Using data-driven covariates within three years	2.02 (1.85-2.21)	24.87 (20.71 to 29.40)	1.61 (1.48-1.75)	25.41 (20.00 to 31.29)	1.58 (1.47-1.70)	32.18 (25.89 to 38.96)
Excluding participants with history in two years before follow-up	2.04 (1.86-2.26)	21.54 (17.63 to 25.86)	1.69 (1.55 to 1.85)	25.13 (19.81 to 30.96)	1.66 (1.53 to 1.80)	31.02 (24.84 to 37.72)