

Impact of COVID-19 pandemic on the incidence of suicidal behaviors: a retrospective analysis of integrated electronic health records in a 7.5-million population

Supplementary file 1

CONTENTS

Supplementary methods.....	2
Table S1. Codes of the International Classification of Diseases (v10, clinical modification) considered for each mental health disorder.....	2
Supplementary figures	3
Figure S1. Decomposition of additive time series.....	3
Figure S2. Monthly incidence, overall and according to gender; sub-analysis for individuals within the high (a), moderate (b), and low or very low (c) socioeconomic status.	4
Figure S3. Type of drug abuse among individuals with suicidal behaviors. Percentages for the pre-pandemic period (i.e., January 01, 2017 to February 29, 2020) and pandemic period (i.e., March 01, 2020 to June 30, 2022).	7
Supplementary TABLES	8
Table S2. Type of drug abuse of individuals with suicidal behaviors within the investigated period. Results are presented as no. and percentage of individuals.....	8

SUPPLEMENTARY METHODS

Table S1. Codes of the International Classification of Diseases (v10, clinical modification) considered for each mental health disorder

F1*	Drugs
F10*	Alcohol abuse
F11*	Opioids abuse
F12*	Cannabis abuse
F13*	Hypnotic drugs abuse
F14*	Cocaine abuse
F17*	Tobacco abuse
F51*	Sleep disorders
F6*	Personality disorders
F31*	Bipolar disorders
F33* - F39*	Depression
F41*	Anxiety
F50*	Eating disorders
F20*, F25*	Schizophrenia
G30*	Alzheimer

SUPPLEMENTARY FIGURES

Figure S1. Decomposition of additive time series.

The observed rate was decomposed into a time series including the overall trend, the additive seasonal component, and random component using moving averages. The moving average considered a 12-month symmetric window with equal weights. The seasonal component was computed by averaging, for each time unit, over all periods. Finally, the error component is determined by removing trend and seasonal components from the original time series.

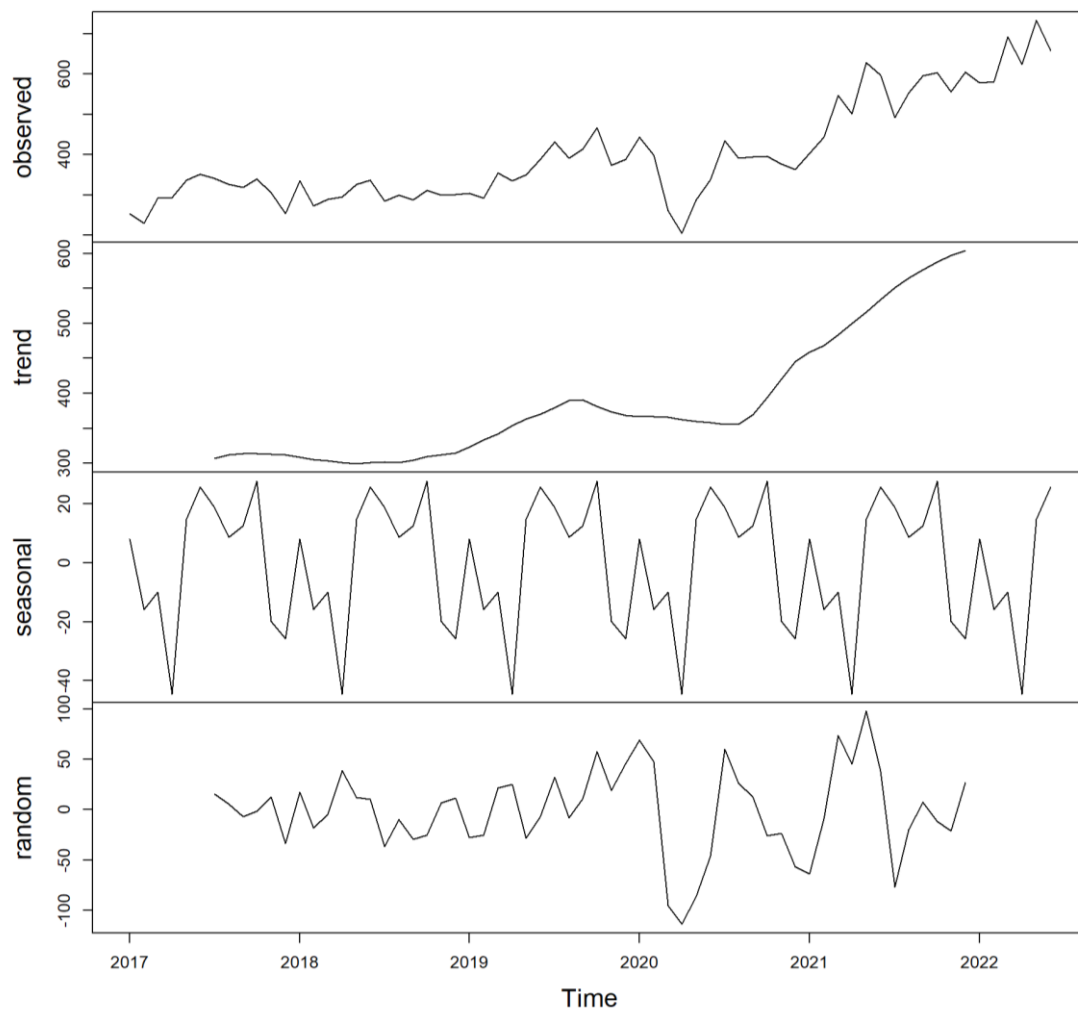
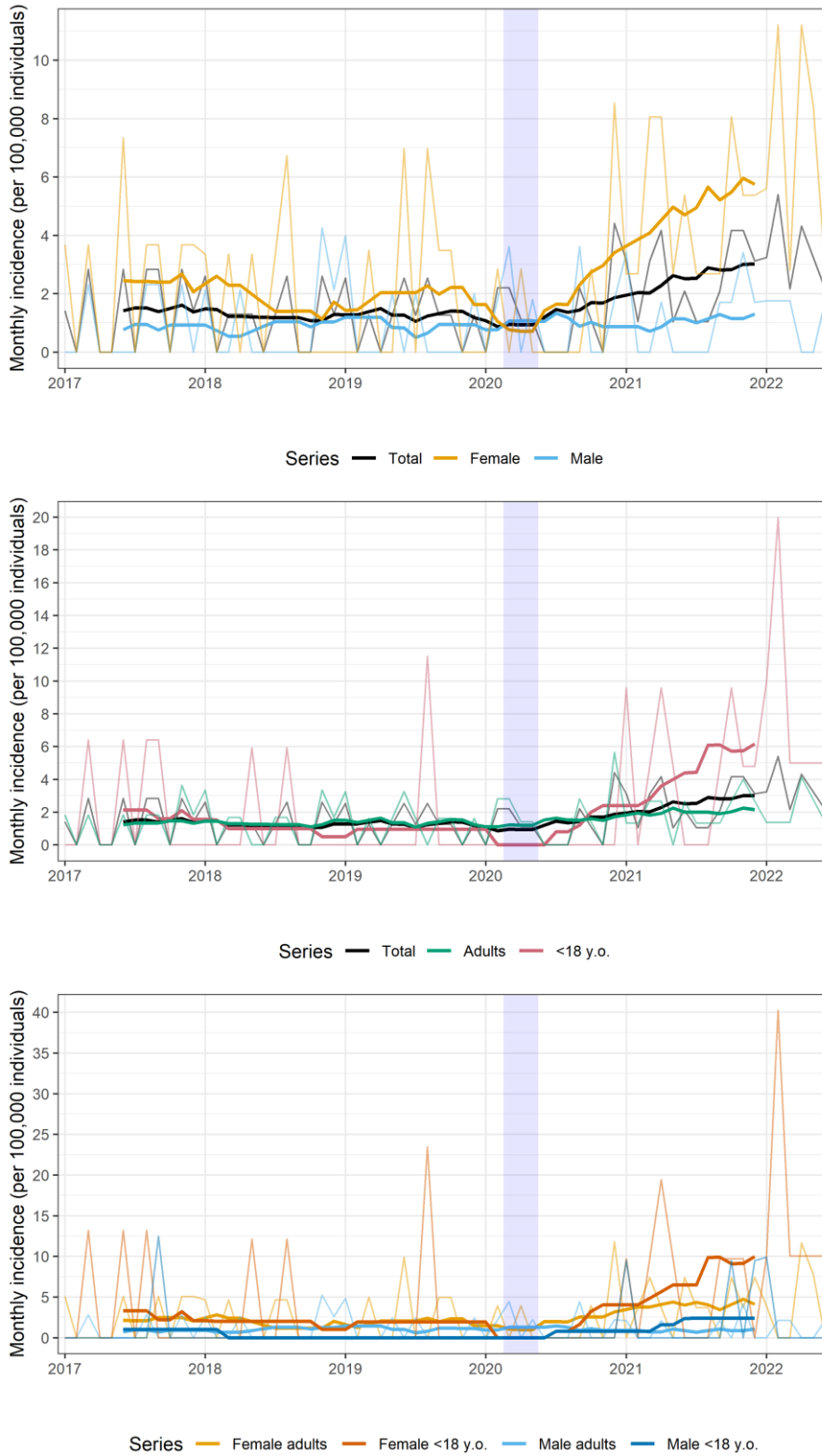
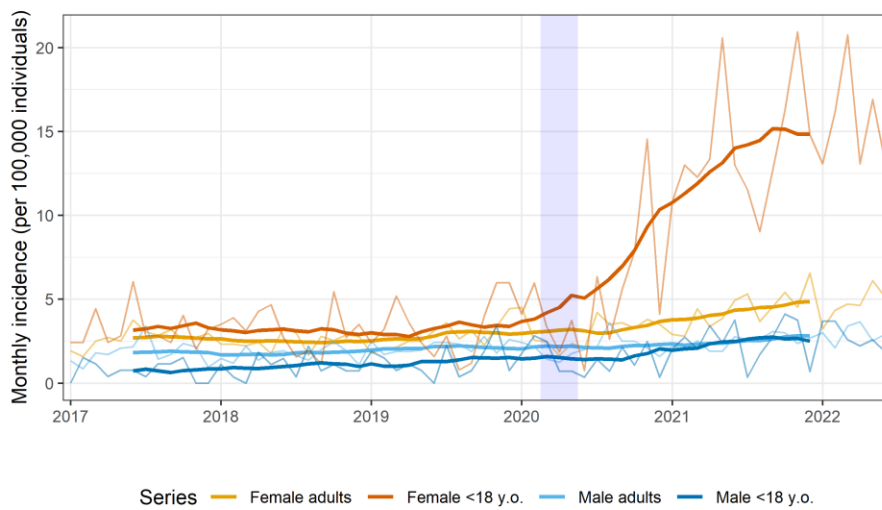
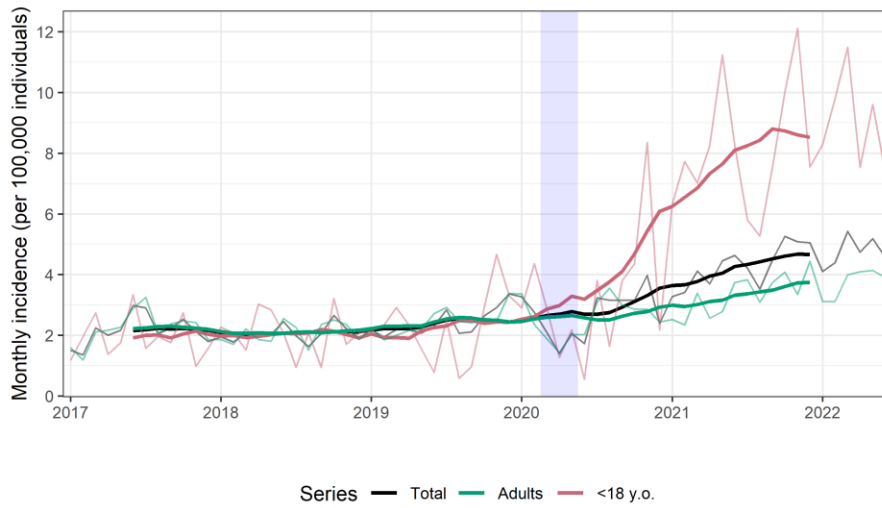
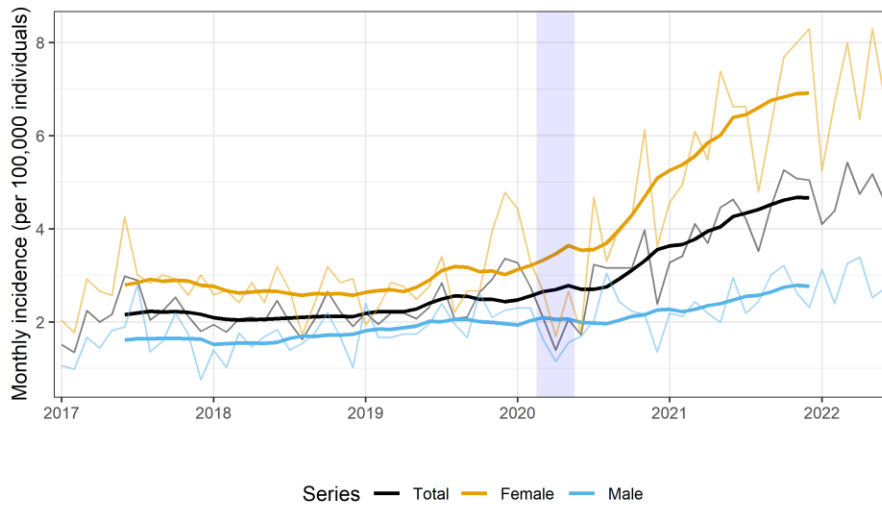


Figure S2. Monthly incidence, overall and according to gender; sub-analysis for individuals within the high (a), moderate (b), and low or very low (c) socioeconomic status.

a)



b)



c)

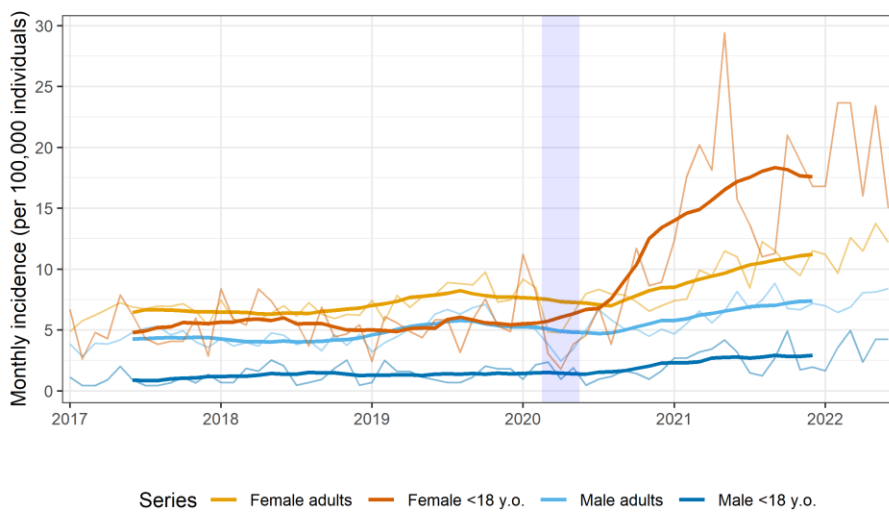
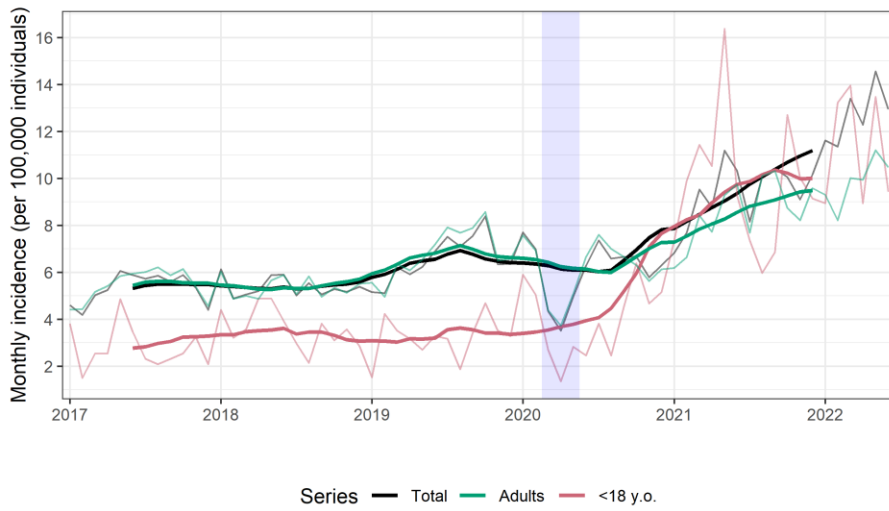
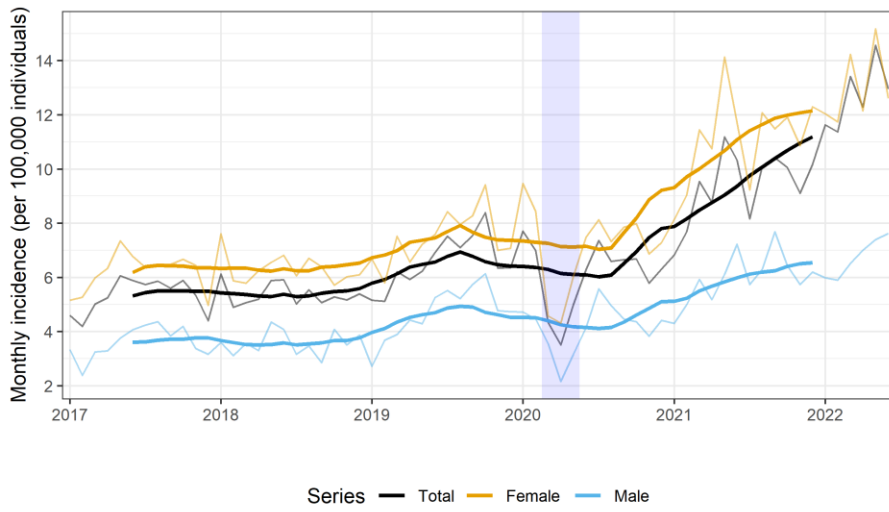
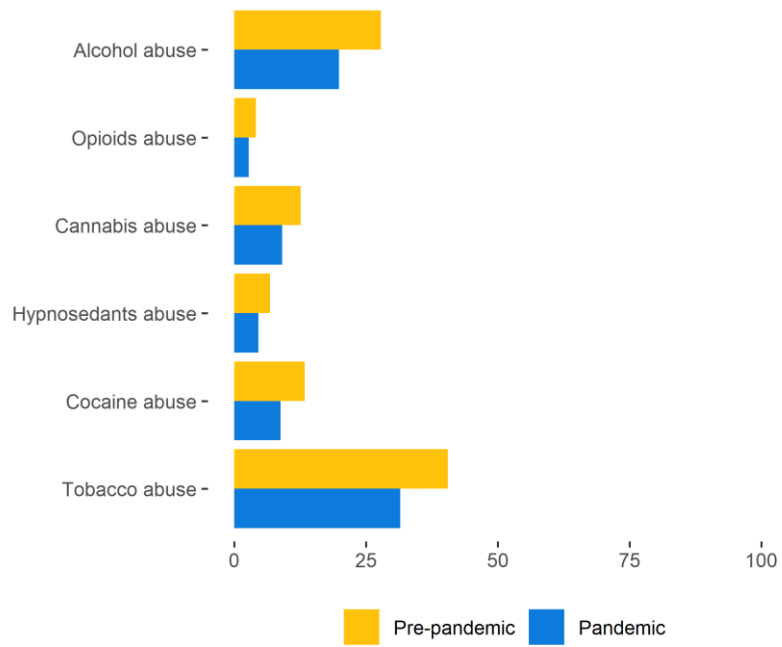


Figure S3. Type of drug abuse among individuals with suicidal behaviors. Percentages for the pre-pandemic period (i.e., January 01, 2017 to February 29, 2020) and pandemic period (i.e., March 01, 2020 to June 30, 2022).



SUPPLEMENTARY TABLES

Table S2. Type of drug abuse of individuals with suicidal behaviors within the investigated period. Results are presented as no. and percentage of individuals.

	2017 (N = 3641)	2018 (N = 3638)	2019 (N = 4489)	2020 (N = 4291)	2021 (N = 6528)	2022¹ (N = 3871)
Alcohol abuse	874 (24%)	773 (21.25%)	1033 (23.01%)	1002 (23.35%)	1149 (17.6%)	594 (15.34%)
Opioids abuse	132 (3.63%)	122 (3.35%)	160 (3.56%)	152 (3.54%)	163 (2.5%)	70 (1.81%)
Cannabis abuse	370 (10.16%)	346 (9.51%)	454 (10.11%)	456 (10.63%)	548 (8.39%)	265 (6.85%)
Hypnotic drugs abuse	180 (4.94%)	187 (5.14%)	258 (5.75%)	244 (5.69%)	275 (4.21%)	128 (3.31%)
Cocaine abuse	396 (10.88%)	393 (10.8%)	536 (11.94%)	430 (10.02%)	531 (8.13%)	272 (7.03%)
Tobacco abuse	1500 (41.2%)	1464 (40.24%)	1825 (40.65%)	1671 (38.94%)	1976 (30.27%)	1046 (27.02%)

¹ The observation period for year 2022 ends on June 30, 2022.