

Supplementary Appendix

Table of Contents

<i>Supplemental Figure 1A</i>	4
<i>Supplemental Figure 1B</i> <i>Supplemental Figure 1C</i>	5
<i>Supplemental Figure 1D</i>	6
<i>Supplemental Figure 1E</i>	6
<i>Supplementary Table 1</i>	7
<i>Supplemental Figure 2A</i> <i>Supplemental Figure 2A.2</i>	8
<i>Supplemental Figure 2B</i> <i>Supplemental Figure 2B.2</i>	9
<i>Supplemental Figure 2C</i> <i>Supplemental Figure 2C.2</i>	10
<i>Supplemental Figure 2D</i> <i>Supplemental Figure 2D.2</i>	11
<i>Supplemental Figure 2F</i>	12
<i>Supplemental Figure 2G.3</i> <i>Supplemental Figure 2G.4</i>	14
<i>Supplemental Figure 3A</i>	15
<i>Supplemental Figure 3C</i>	16
<i>Supplemental Figure 4A</i>	17
<i>Supplemental Figure 4B</i>	18
<i>Supplemental Figure 4C</i>	19

Supplement to: Faust JS, Du C, Renton B *et al.* Two years of Covid-19: Excess mortality by age, region, gender, and race/ethnicity in the United States during the Covid-19 pandemic, March 1, 2020, through February 28, 2022.

This appendix has been provided by the authors to give readers additional information about the work.

Supplemental figure legends:

Figure 1A. Excess and COVID-19–Attributed Deaths in the United States, by state, March 1, 2020, through February 28, 2022.

Figure 1B. Observed (yellow) and expected (blue) deaths, by state, March 1, 2020, through February 28, 2022.

Figure 1C. Observed (yellow) and expected (blue) deaths, by state, per 100,000 person-months, March 1, 2020, through February 28, 2022.

Figure 1D. Share of excess deaths by Census Bureau region, March 1, 2020, through February 28, 2022.

Figure 1E. Cumulative excess deaths by Census Bureau division, per 100,000 person-months.

Table 1. Excess and COVID-19–Attributed Deaths in the United States, by Census Bureau region, Ages ≥ 65 years, March 1, 2020, through February 28, 2022

Figure 2. Monthly observed (yellow) and expected (blue) deaths in the United States, by age group and state, March 1, 2020, through February 28, 2022.

Panel A: Ages ≥ 65 years, per 100,000 person-months.

Panel B: Ages 50-64 years, per 100,000 person-months.

Panel C: Ages 18-49 years, per 100,000 person-months.

Panel D: Ages 0-17 years, per 100,000 person-months.

Figure 2E. Cumulative excess deaths by Census Bureau division and age, per 100,000 person-months.

Figure 2F. Cumulative excess deaths by Census Bureau region and age, per 100,000 person-months.

Figure 2G. Excess and COVID-19–Attributed Deaths in the United States, by state and age group, March 1, 2020, through February 28, 2022.

Figure 3. Monthly excess deaths in the United States, by sex, March 1, 2020, through February 28, 2022.

Panel A: Excess mortality, all ages, ages 0-17, ages 18-49, ages 50-64, ages ≥ 65 years.

Panel B: Observed (yellow) and expected (blue) deaths, by age group and sex.

Panel C: Cumulative excess deaths by sex and age.

Figure 4. Monthly excess deaths in the United States, by race or ethnicity, March 1, 2020, through February 28, 2022.

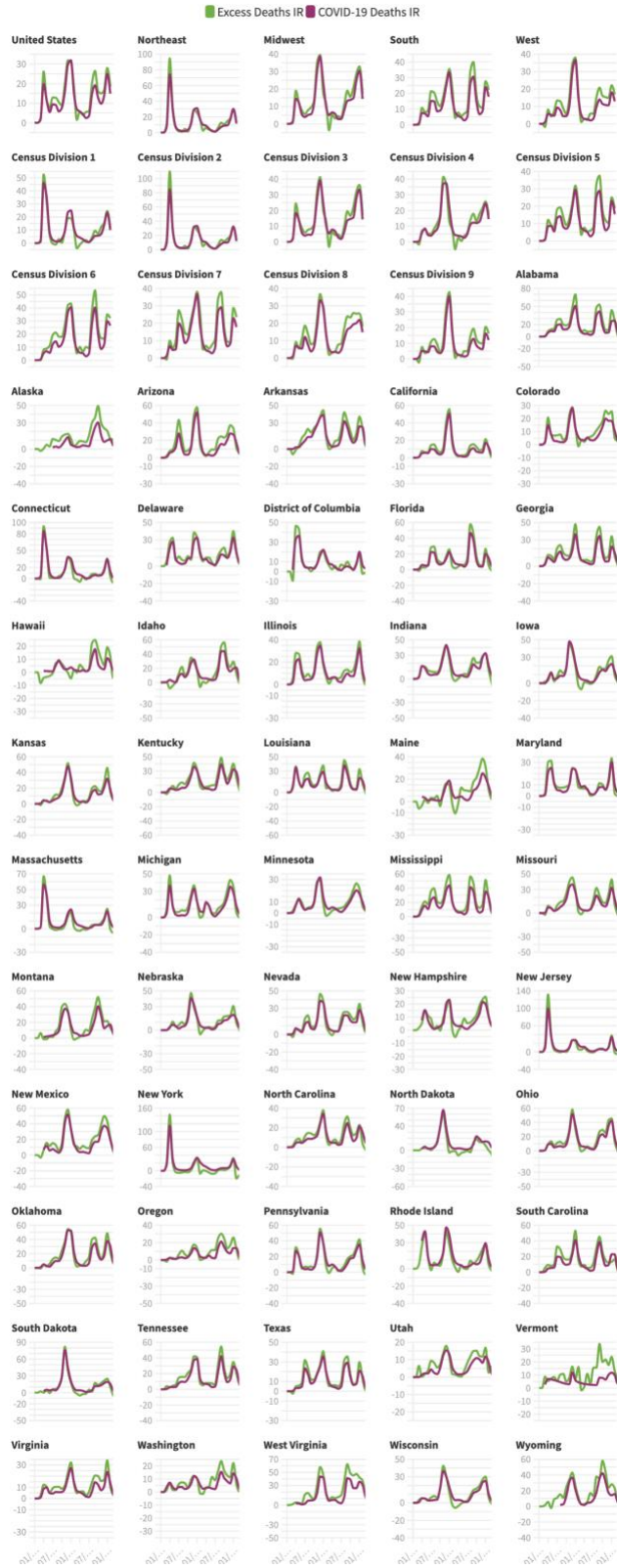
Panel A: Excess mortality, all ages, ages 0-25, ages 25-64, ages ≥ 65 years, by race or ethnicity.

Panel B: Observed (yellow) and expected (blue) deaths, by age group and race or ethnicity.

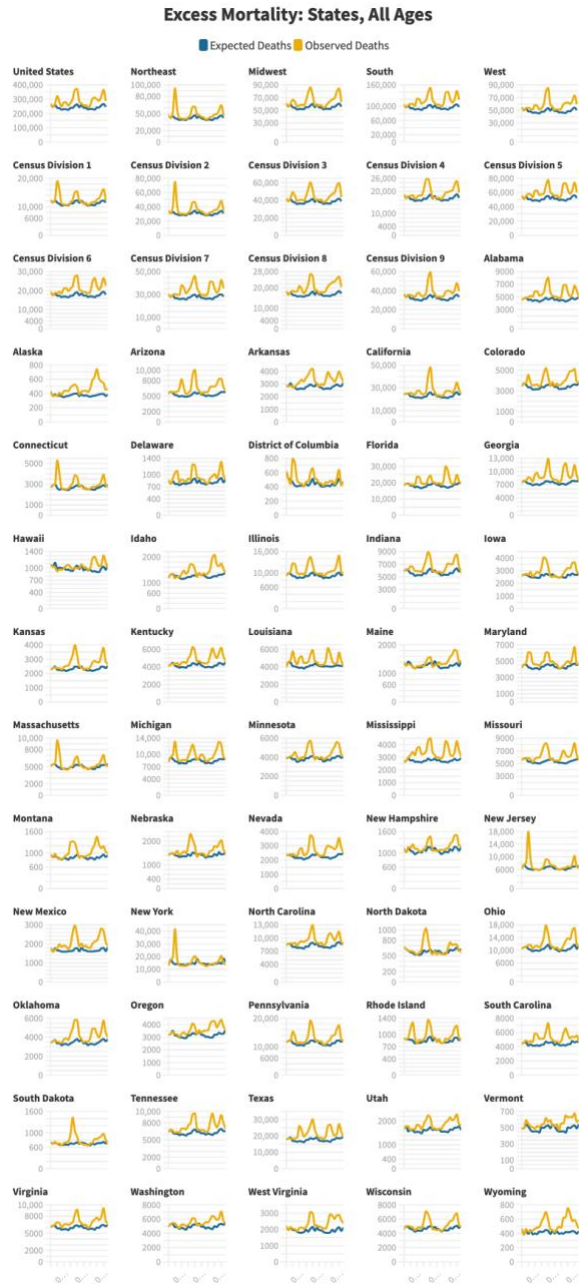
Panel C: Cumulative excess deaths by age and race or ethnicity.

Supplemental Figure 1A

Excess and COVID-19 Mortality: States, All Ages



Supplemental Figure 1B

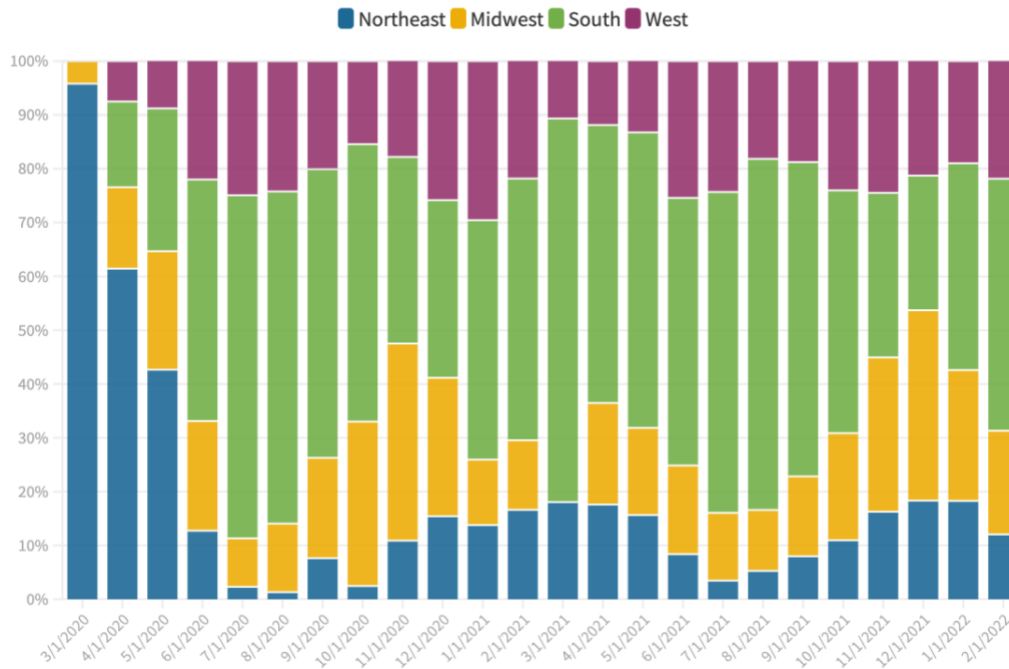


Supplemental Figure 1C



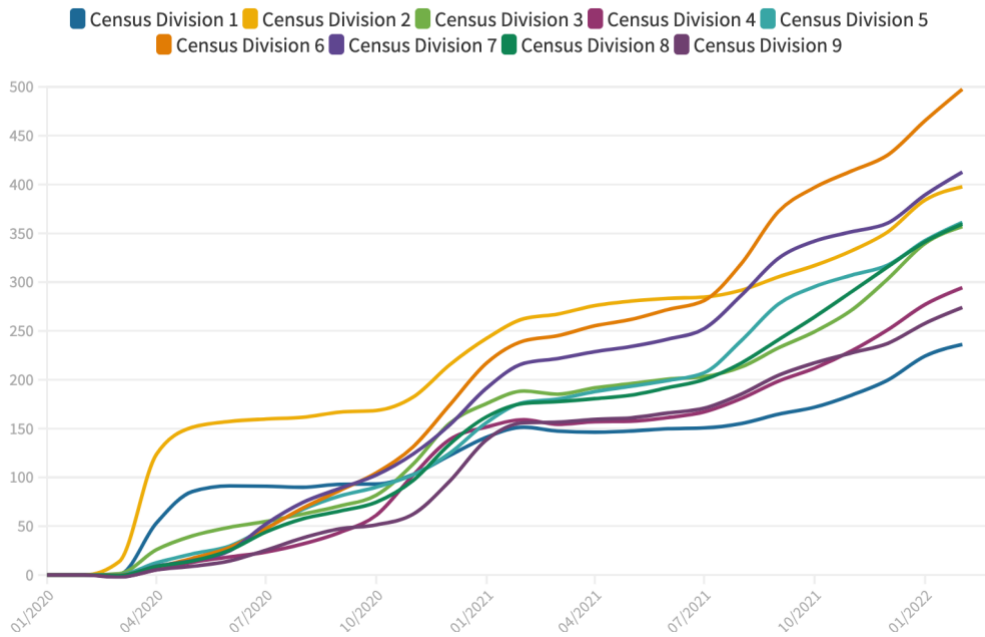
Supplemental Figure 1D

Share of Excess Deaths by Census Regions



Supplemental Figure 1E

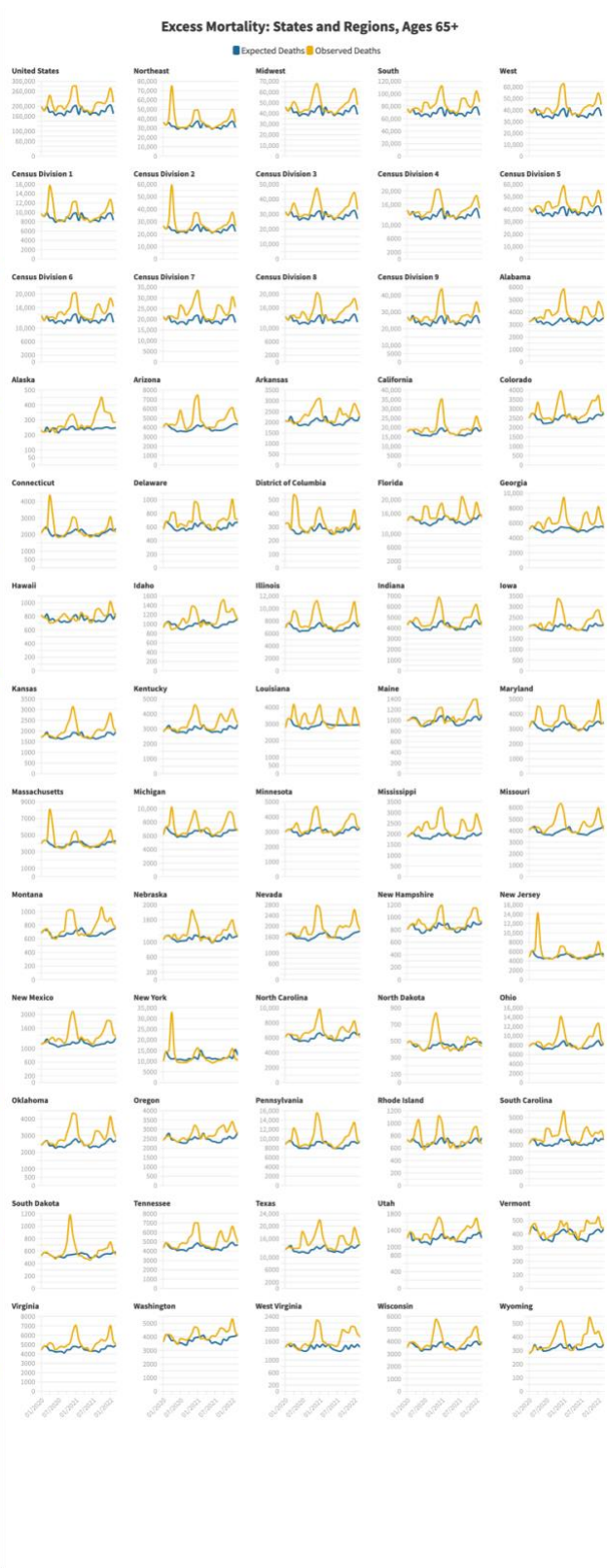
Cumulative All-Cause Excess Mortality by Census Division, IR
March 1, 2020-February 28, 2022



Supplemental Figure 2A



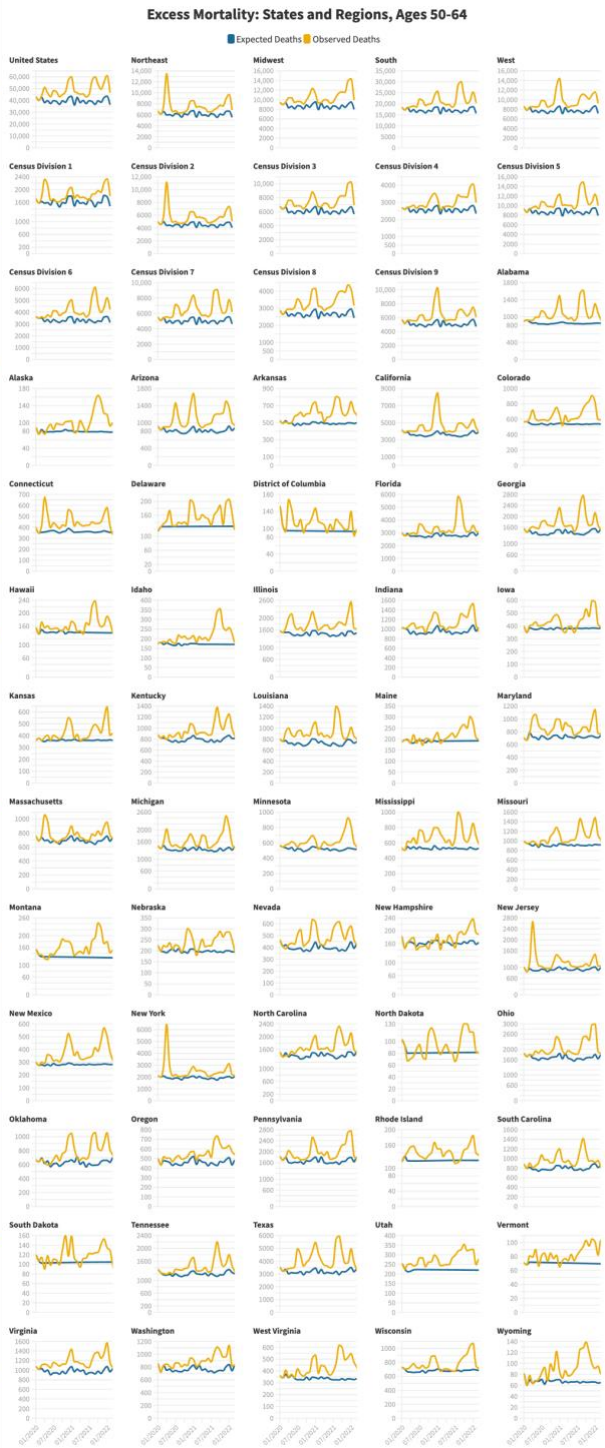
Supplemental Figure 2A.2

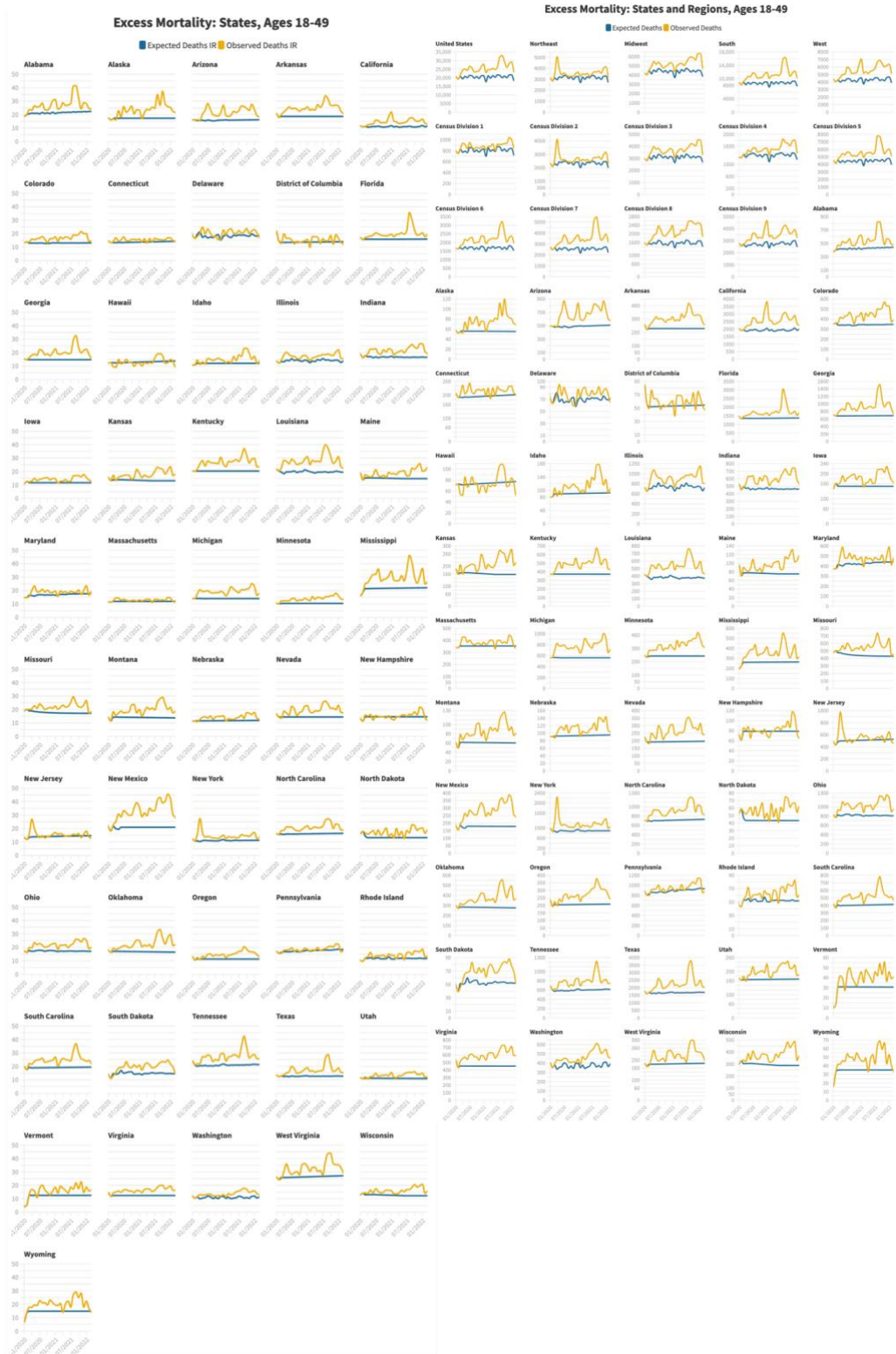


Supplemental Figure 2B

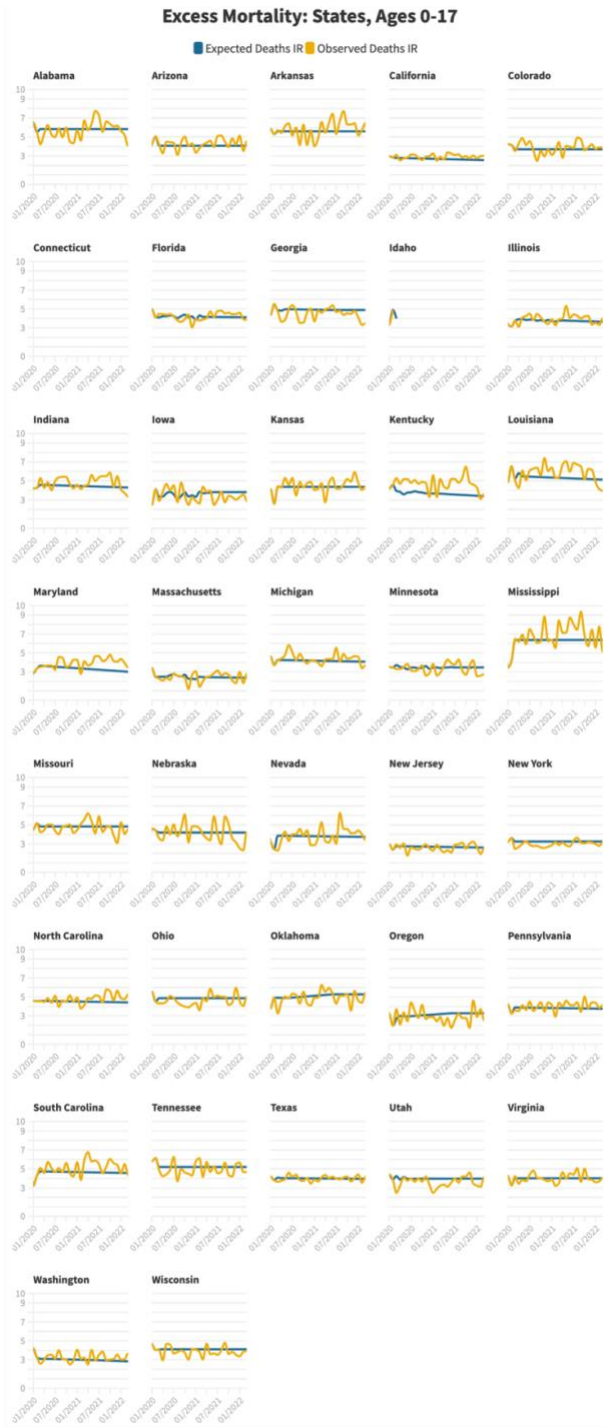


Supplemental Figure 2B.2

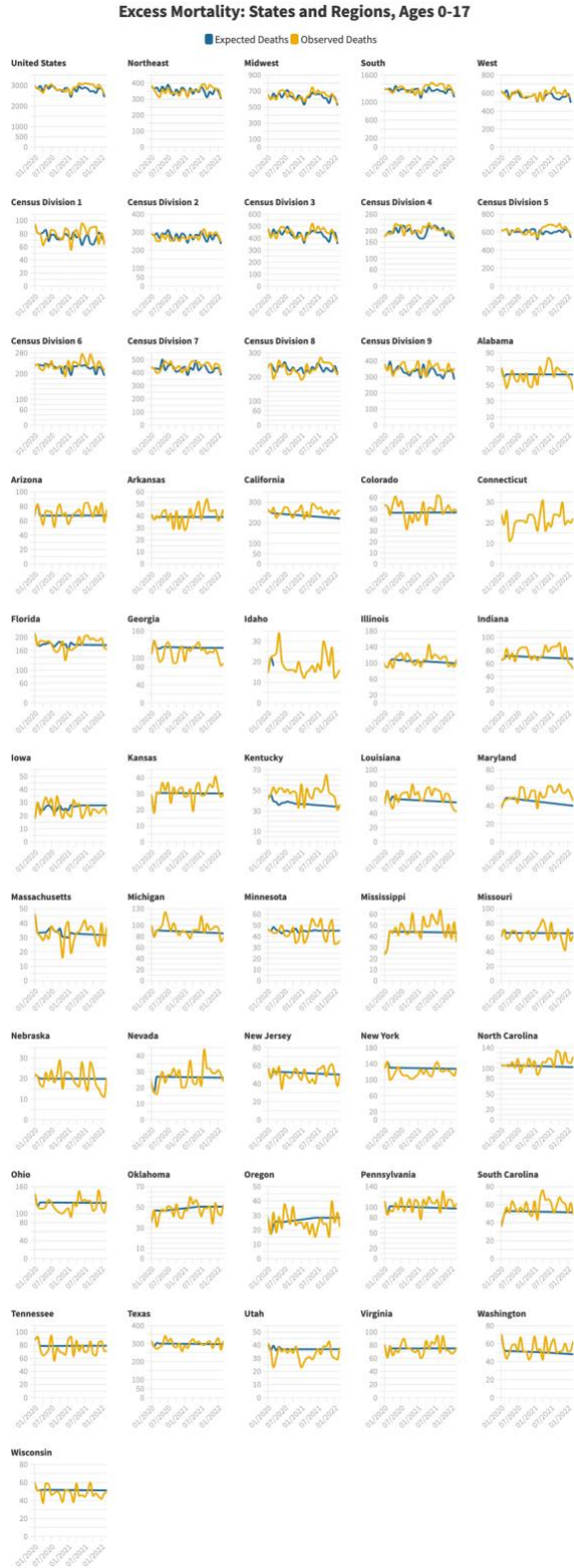




Supplemental Figure 2D

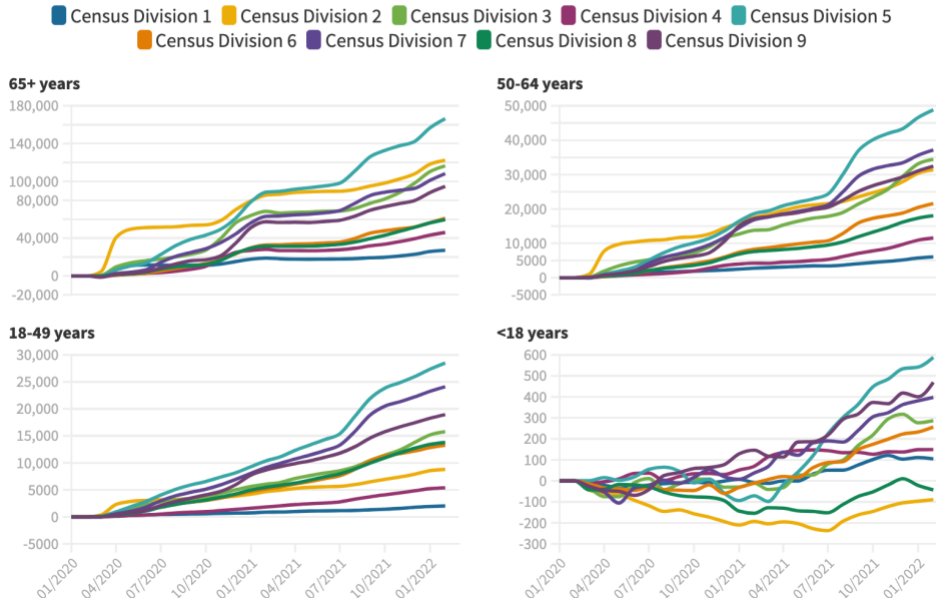


Supplemental Figure 2D.2



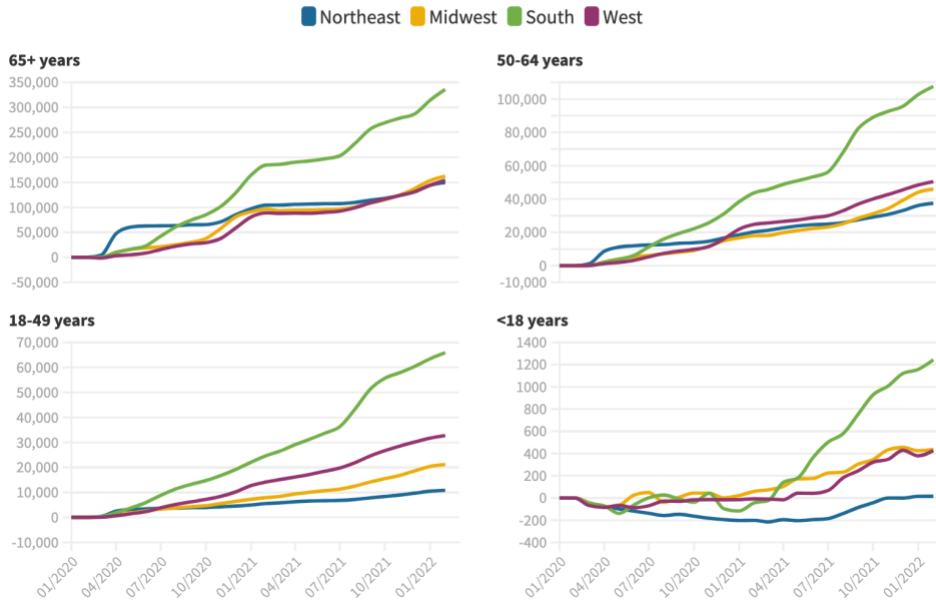
Supplemental Figure 2E

Cumulative All-Cause Excess Mortality by Census Bureau Division
 March 1, 2020-February 28, 2022



Supplemental Figure 2F

Cumulative All-Cause Excess Mortality by Census Bureau Region
 March 1, 2020-February 28, 2022



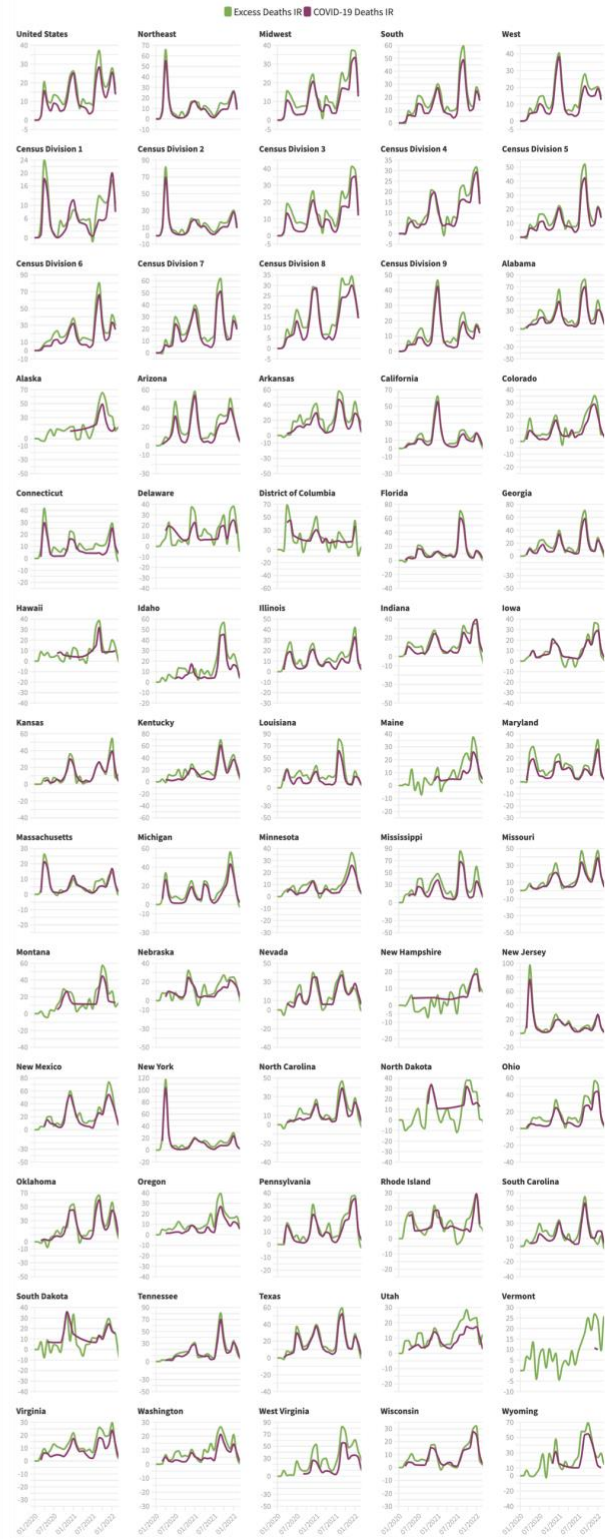
Supplemental Figure 2G.1

Excess and COVID-19 Mortality: States and Regions, Ages 65+

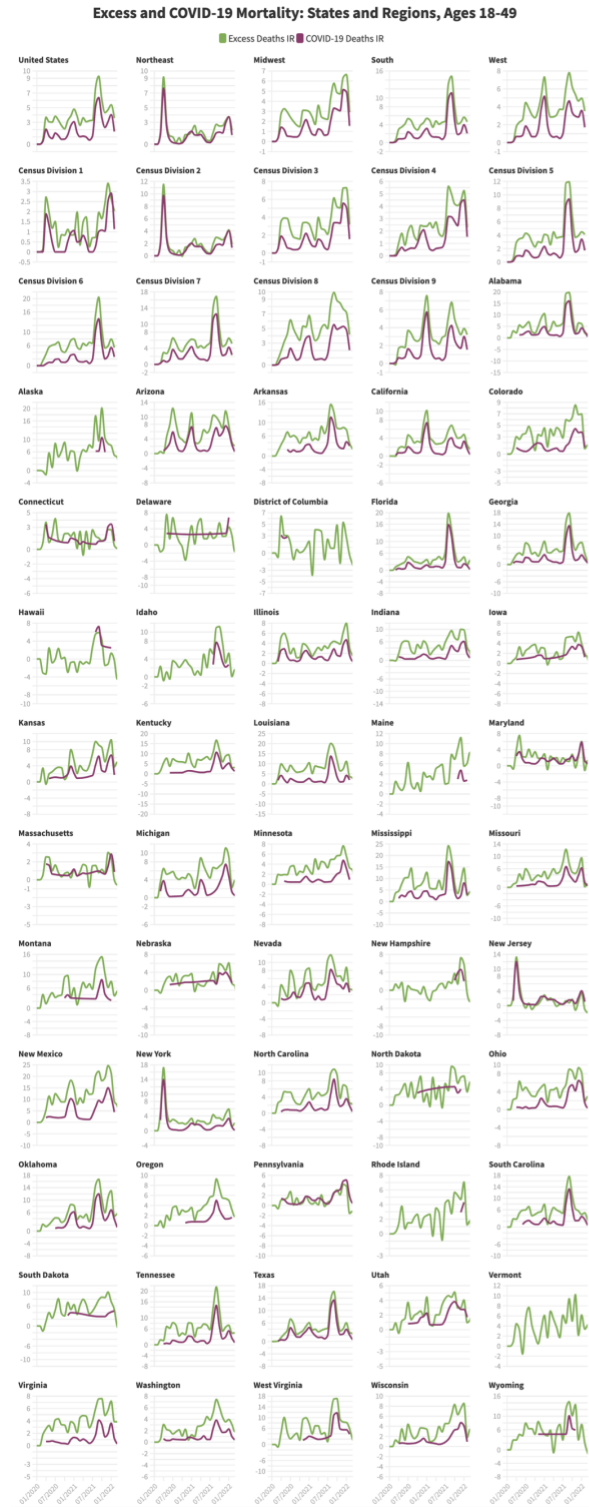


Supplemental Figure 2G.2

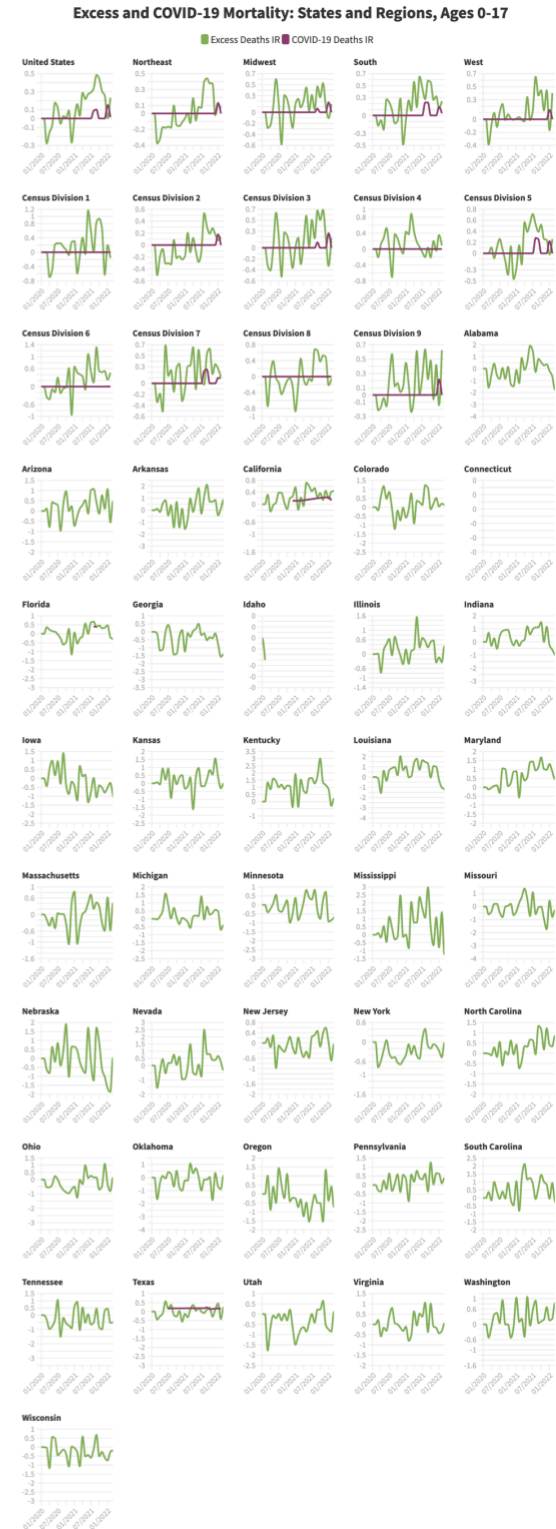
Excess and COVID-19 Mortality: States and Regions, Ages 50-64



Supplemental Figure 2G.3



Supplemental Figure 2G.4

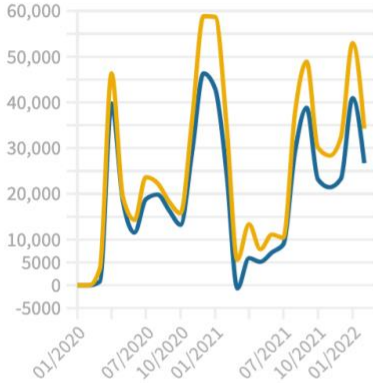


Supplemental Figure 3A

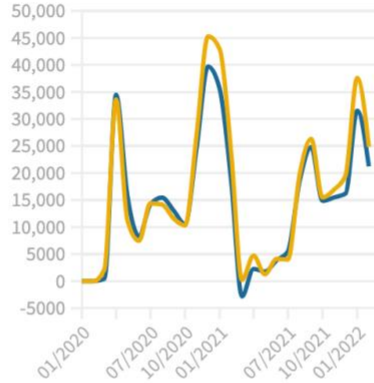
Excess Deaths: Gender

■ Female ■ Male

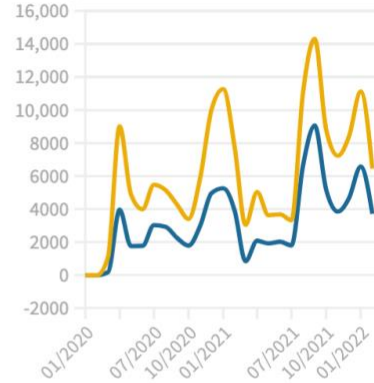
All ages



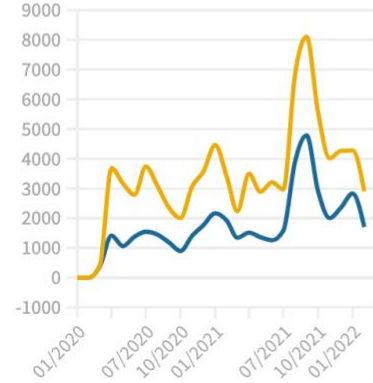
65+ years



50-64 years



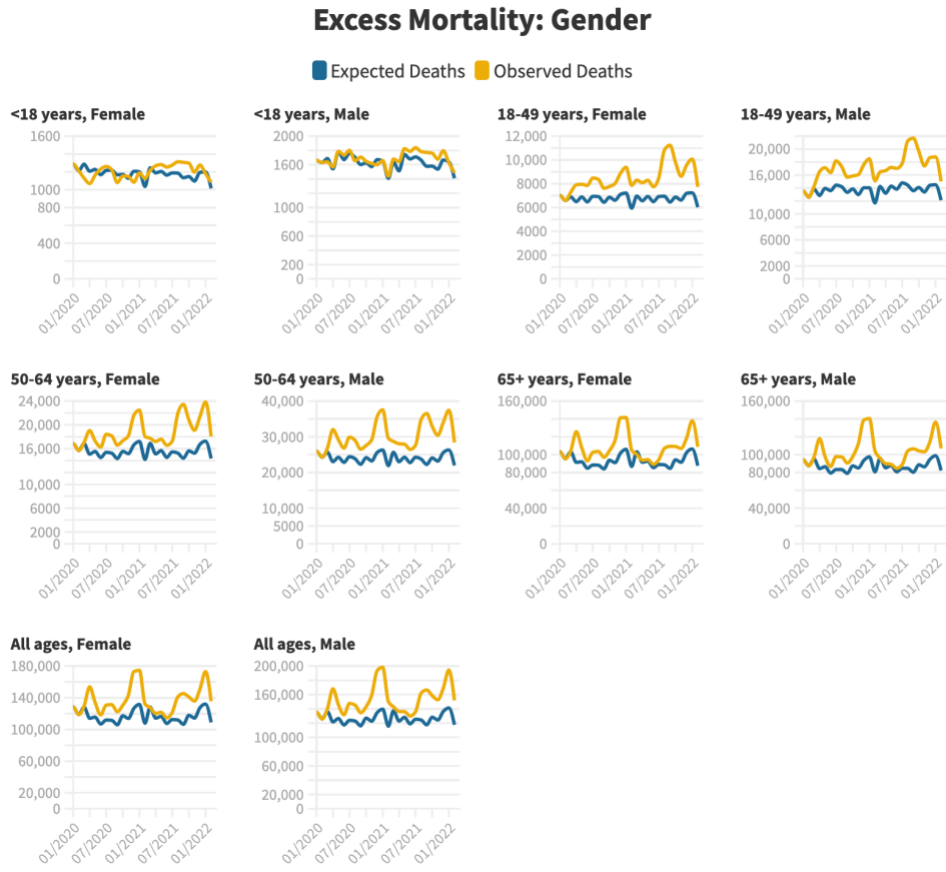
18-49 years



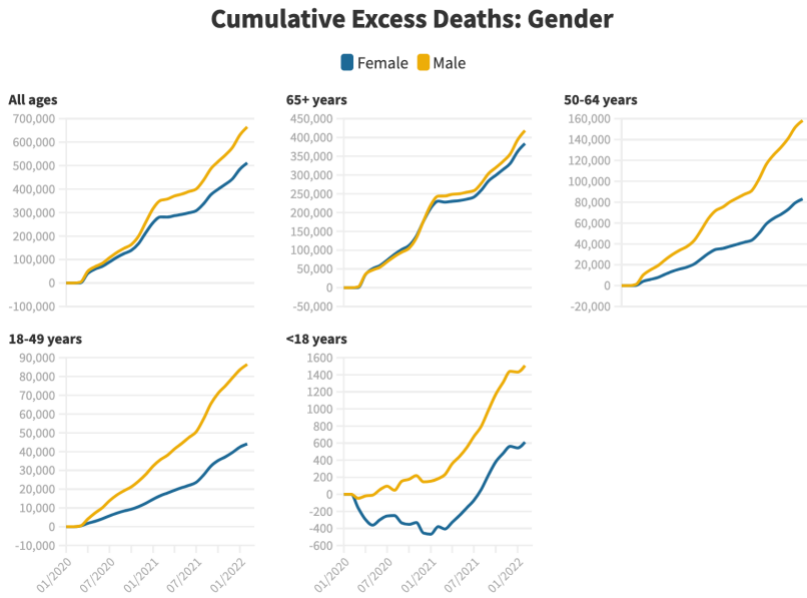
<18 years



Supplemental Figure 3B



Supplemental Figure 3C

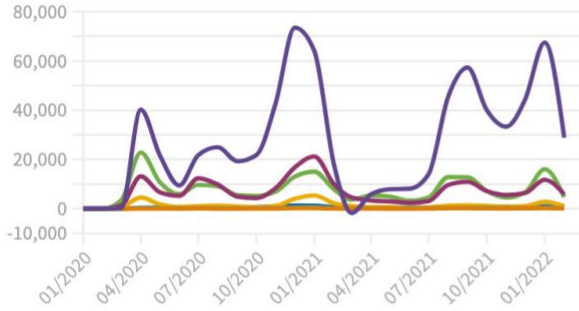


Supplemental Figure 4A

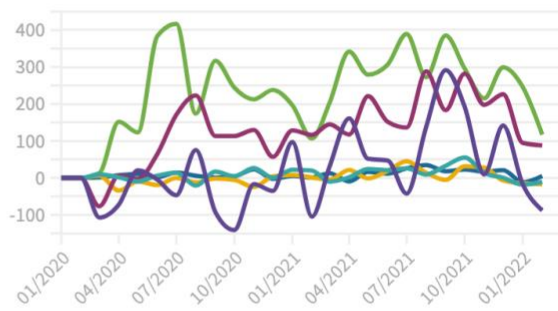
Excess Deaths: Race

American Indian or Alaska Native Asian Black or African American Hispanic More than one race
Native Hawaiian or Other Pacific Islander White

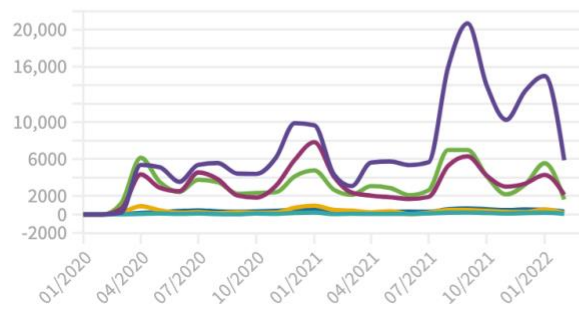
All ages



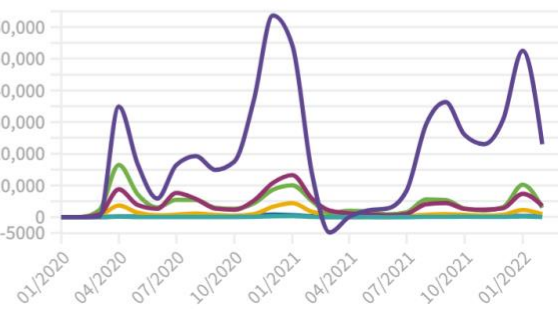
<25 years



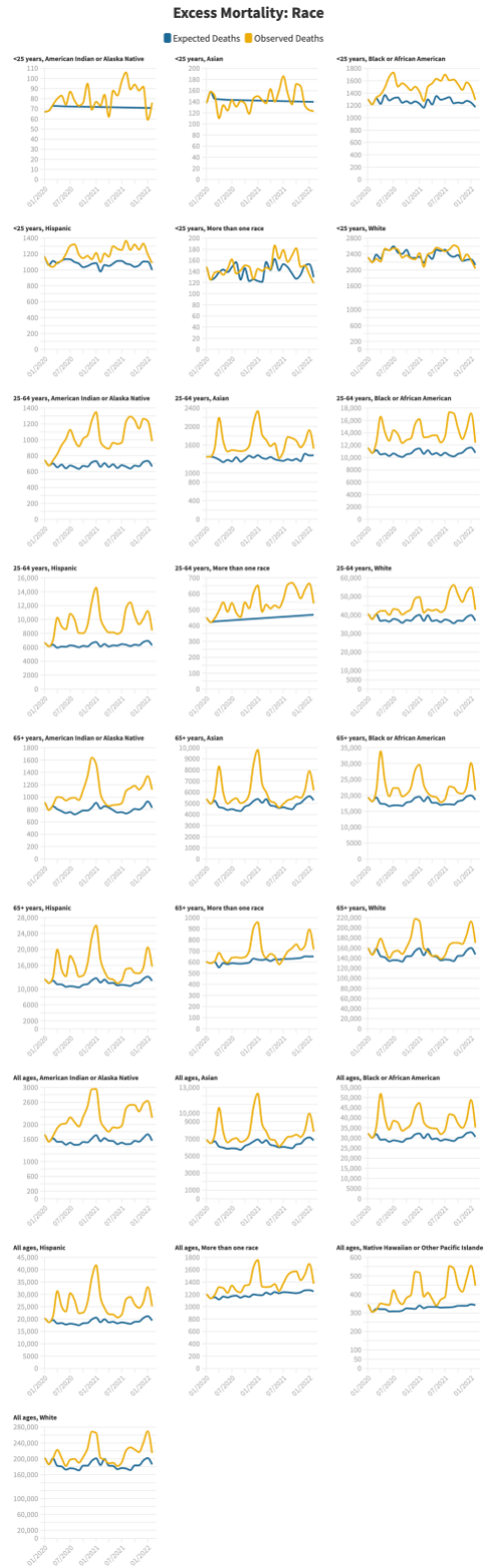
25-64 years



65+ years



Supplemental Figure 4B

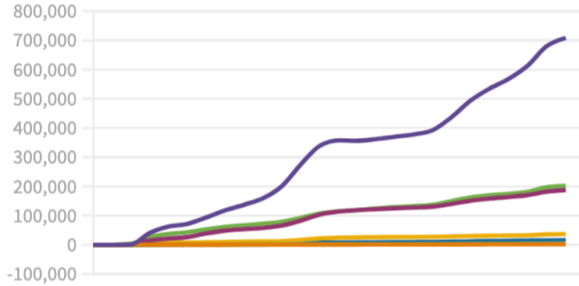


Supplemental Figure 4C

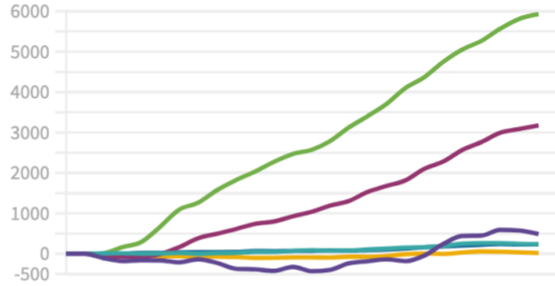
Cumulative Excess Deaths: Race

■ American Indian or Alaska Native
 ■ Asian
 ■ Black or African American
 ■ Hispanic
 ■ More than one race
■ Native Hawaiian or Other Pacific Islander
 ■ White

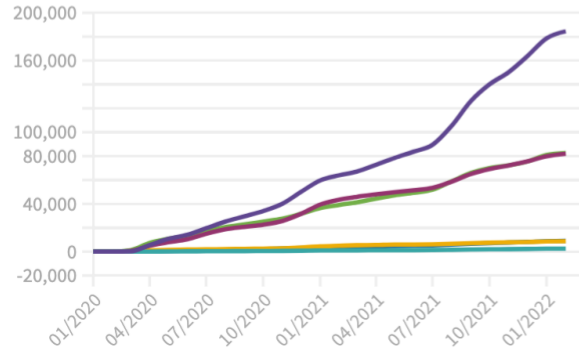
All ages



<25 years



25-64 years



65+ years

