

1 **TITLE: Emergence and spread of two SARS-CoV-2 variants of interest**  
2 **in Nigeria.**

3  
4  
5 Idowu B. Olawoye<sup>1,2\*</sup>, Paul E. Oluniyi<sup>1,2\*</sup>, Judith U. Oguzie<sup>1,2\*</sup>, Jessica N. Uwanibe<sup>1,2\*</sup>, Adeyemi T.  
6 Kayode<sup>1,2\*</sup>, Testimony J. Olumade<sup>1,2\*</sup>, Fehintola V. Ajogbasile<sup>1,2\*</sup>, Edyth Parker<sup>3\*</sup>, Philomena E.  
7 Eromon<sup>2</sup>, Priscilla Abechi<sup>1,2</sup>, Tope Sobajo<sup>1,2</sup>, Chinedu Ugwu<sup>1,2</sup>, George Uwem<sup>1,2</sup>, Femi Ayoade<sup>1,2</sup>  
8 , Kazeem Akano<sup>1,2</sup>, Nicholas Oyejide<sup>2</sup>, Iyanuoluwa Fred-Akintunwa<sup>2</sup>, Kemi Adedotun-Sulaiman<sup>2</sup>  
9 Farida Brimmo<sup>2</sup>, Benjamin Adegboyega<sup>2</sup>, Courage Philip<sup>2</sup>, Ayomide Adeleke<sup>2</sup>, Grace C.  
10 Chukwu<sup>2</sup>, Ahmed I. Muhammad<sup>2</sup>, Oludayo O. Ope-ewe<sup>2</sup>, Shobi Otitoola<sup>2</sup>, Olusola A.  
11 Ogunsanya<sup>2</sup>, Mudasiru F. Saibu<sup>2</sup>, Ayotunde E. Sijuwola<sup>2</sup>, Grace O. Ezekiel<sup>2</sup>, Oluwagboadurami  
12 G. John<sup>1,2</sup>, Julie O. Akin-John<sup>1,2</sup>, Oluwasemilogo O. Akinlo<sup>2</sup>, Olanrewaju O. Fayemi<sup>2</sup>, Testimony  
13 O. Ipaye<sup>2</sup>, Deborah C. Nwodo<sup>2</sup>, Abolade E. Omoniyi<sup>2</sup>, Iyobosa B. Omwanghe<sup>2</sup>, Christabel A.  
14 Terkuma<sup>2</sup>, Johnson Okolie<sup>2</sup>, Olubukola Ayo-Ale<sup>2</sup>, Odia Ikponmwosa<sup>4</sup>, Ebo Benevolence<sup>4</sup>,  
15 Okonofua Naregose<sup>4</sup>, Akhilomen Patience<sup>4</sup>, Osiemi Blessing<sup>4</sup>, Airende Micheal<sup>4</sup>, Agbukor  
16 Jacqueline<sup>4</sup>, Aiyepada John<sup>4</sup>, Paulson Ebhodaghe<sup>4</sup>, Omiunu Racheal<sup>4</sup>, Esumeh Rita<sup>4</sup>, Giwa  
17 Rosemary<sup>4</sup>, Ehikhametalor Solomon<sup>4</sup>, Ekanem Anieno<sup>4</sup>, Yerumoh Edna<sup>4</sup>, Aire Chris<sup>4</sup>, Adomeh  
18 Donatus<sup>4</sup>, Ephraim Ogbaini<sup>4</sup>, Mirabeau Y. Tattfeng<sup>5</sup>, Hannah E. Omunakwe<sup>6</sup>, Mienye Bob-  
19 Manuel<sup>6</sup>, Rahaman Ahmed<sup>7</sup>, Chika Onwuamah<sup>7</sup>, Joseph Shaibu<sup>7</sup>, Azuka Okwuraiwe<sup>7</sup>, Anthony  
20 E. Atage<sup>8</sup>, Andrew Bock-Oruma<sup>9</sup>, Funmi Daramola<sup>10</sup>, Akinwumi Fajola<sup>11</sup>, Nsikak-Abasi Ntia<sup>12</sup>,  
21 Julie J. Ekpo<sup>13</sup>, Anietie Moses<sup>13</sup>, Worbianueri B. Moore-Igwe<sup>14</sup>, Ibrahim F. Yusuf<sup>10</sup>, Enoch O.  
22 Fakayode<sup>15</sup>, Monilade Akinola<sup>16</sup>, Ibrahim Kida<sup>17</sup>, Bamidele S. Oderinde<sup>17</sup>, Zara Wudiri<sup>18</sup>, Olufemi  
23 O. Adeyemi<sup>19</sup>, Olusola Akanbi<sup>20</sup>, Anthony Ahumibe<sup>20</sup>, Afolabi Akinpelu<sup>20</sup>, Oyeronke Ayansola<sup>20</sup>,  
24 Olajumoke Babatunde<sup>20</sup>, Adesuyi Omoare<sup>20</sup>, Chimaobi Chukwu<sup>20</sup>, Nwando Mba<sup>20</sup>, Ewean C.  
25 Omoruyi<sup>21</sup>, Johnson A. Adeniji<sup>22</sup>, Moses O. Adewunmi<sup>22</sup>, Oluseyi Olayinka<sup>22</sup>, Olisa  
26 Olasunkanmi<sup>23</sup>, Olatunji Akande<sup>23</sup>, Ifeanyi Nwafor<sup>24</sup>, Matthew Ekeh<sup>24</sup>, Erim Ndoma<sup>24</sup>, Richard  
27 Ewah<sup>24</sup>, Rosemary Duruihuoma<sup>24</sup>, Augustine Abu<sup>24</sup>, Elizabeth Odeh<sup>24</sup>, Venatious Onyia<sup>24</sup>,  
28 Kingsley C. Ojide<sup>24</sup>, Sylvanus Okoro<sup>25</sup>, Daniel Igwe<sup>25</sup>, Kamran Khan<sup>34</sup>, Anthony N. Ajayi<sup>26</sup>,  
29 Ebhodaghe Ngozi Ugwu<sup>27</sup>, Collins N. Ugwu<sup>26</sup>, Kingsley Ukwuaja<sup>26</sup>, Emeka O. Ogah<sup>25</sup>,  
30 Chukwuyem Abejegah<sup>28</sup>, Nelson Adedosu<sup>28</sup>, Olufemi Ayodeji<sup>28</sup>, Rafiu O. Isamotu<sup>29</sup>, Galadima  
31 Gadzama<sup>30</sup>, Brittany Petros<sup>31</sup>, Katherine J. Siddle<sup>31</sup>, Stephen Schaffner<sup>31</sup>, George Akpede<sup>4</sup>, Cyril  
32 Oshomah Eramah<sup>4</sup>, Marycelin Baba<sup>16,17</sup>, Femi Oladiji<sup>32</sup>, Rosemary Audu<sup>7</sup>, Nnaemeka Ndodo<sup>20</sup>,  
33 Adeola Fowotade<sup>23</sup>, Sylvanus Okogbenin<sup>4</sup>, Peter Okokhere<sup>4</sup>, Danny Park<sup>31</sup>, Bronwyn Mcannis<sup>31</sup>,  
34 Ifedayo Adetifa<sup>20</sup>, Chikwe Ihekweazu<sup>20</sup>, Babatunde L. Salako<sup>7</sup>, Oyewale Tomori<sup>2</sup>, Anise N.  
35 Happi<sup>2</sup>, Onikepe A. Folarin<sup>1,2</sup>, Kristian G. Andersen<sup>3</sup>, Pardis C. Sabeti<sup>31,33</sup>, Christian T.  
36 Happi<sup>1,2,33†</sup>

- 37  
38  
39 1. Department of Biological Sciences, Faculty of Natural Sciences, Redeemer's University, Ede,  
40 Osun State, Nigeria.  
41 2. African Centre of Excellence for Genomics of Infectious Diseases (ACEGID), Redeemer's  
42 University, Ede, Osun State, Nigeria.  
43 3. Department of Immunology and Microbiology, The Scripps Research Institute, La Jolla, CA,  
44 USA.  
45 4. Irrua Specialist Teaching Hospital, Edo State, Nigeria.  
46 5. Department of Medical Laboratory Science, Niger Delta University, Bayelsa State, Nigeria.  
47 6. Satellite Molecular Laboratory, Rivers State University Teaching Hospital, Port Harcourt,  
48 Rivers State, Nigeria.  
49 7. The Nigerian Institute of Medical Research, Yaba, Lagos State, Nigeria.

- 50 8. Molecular Laboratory, Regional Centre for Biotechnology and Bioresources Research,  
51 University of Port Harcourt, Port Harcourt, Rivers State, Nigeria.  
52 9. Family Physician, SPDC, Port Harcourt, Rivers State, Nigeria.  
53 10. Clinical Health, SPDC, Port Harcourt, Rivers State, Nigeria.  
54 11. Regional Community Health, SPDC, Port Harcourt, Rivers State, Nigeria.  
55 12. Occupational Health, SPDC, Port Harcourt, Rivers State, Nigeria.  
56 13. Department of Medical Microbiology and Parasitology, University of Uyo, Akwa Ibom State,  
57 Nigeria.  
58 14. Rivers State University, Port Harcourt, Rivers State, Nigeria.  
59 15. Department of Public Health, Ministry of Health, Ilorin, Kwara State, Nigeria.  
60 16. WHO Polio Laboratory, University of Maiduguri Teaching Hospital, Maiduguri, Borno State,  
61 Nigeria.  
62 17. Department of Immunology, University of Maiduguri Teaching Hospital, Maiduguri, Nigeria.  
63 18. Department of Community Medicine, University of Maiduguri Teaching Hospital, Maiduguri,  
64 Borno State, Nigeria.  
65 19. Department of Medical Microbiology and Parasitology. Faculty of Basic Clinical Sciences.  
66 College of Health Sciences, University of Ilorin. Ilorin, Kwara State, Nigeria.  
67 20. Nigeria Centre for Disease Control, Abuja, Nigeria.  
68 21. Medical Microbiology and Parasitology Department, College of Medicine, University of  
69 Ibadan, Ibadan, Nigeria.  
70 22. Department of Virology, College of Medicine, University of Ibadan, Ibadan, Nigeria.  
71 23. Biorepository Clinical Virology Laboratory, University of Ibadan, Ibadan, Nigeria.  
72 24. Virology Laboratory, Alex Ekwueme Federal University Teaching Hospital, Abakaliki, Ebonyi  
73 State, Nigeria.  
74 25. Alex Ekwueme Federal University Teaching Hospital, Abakaliki, Nigeria.  
75 26. Internal Medicine Department, Alex Ekwueme Federal University Teaching Hospital,  
76 Abakaliki, Nigeria.  
77 27. Haematology Department, Alex Ekwueme Federal University Teaching Hospital, Abakaliki,  
78 Nigeria.  
79 28. Federal Medical Center, Owo, Ondo State, Nigeria  
80 29. Ministry of Health, Osun State, Nigeria.  
81 30. Department of Medical Microbiology, University of Maiduguri Teaching Hospital, Maiduguri,  
82 Borno State, Nigeria.  
83 31. Broad Institute of Harvard and MIT, Cambridge, MA, USA.  
84 32. Department of Epidemiology and Community Health, Faculty of Clinical Sciences, College of  
85 Health Sciences, University of Ilorin, Ilorin, Nigeria.  
86 33. Department of Immunology and Infectious Diseases, Harvard TH Chan School of Public  
87 Health, Boston, MA, USA.  
88 34. Bluedot, Toronto, Canada

89

90 \*These authors contributed equally.

91 ‡ Correspondence (happic@run.edu.ng)

92

93

94

95

96

97

98

99

100

101

102

103 **Abstract**

104

105 Identifying the dissemination patterns and impacts of a virus of economic or health importance  
106 during a pandemic is crucial, as it informs the public on policies for containment in order to  
107 reduce the spread of the virus. In this study, we integrated genomic and travel data to  
108 investigate the emergence and spread of the B.1.1.318 and B.1.525 variants of interest in  
109 Nigeria and the wider Africa region. By integrating travel data and phylogeographic  
110 reconstructions, we find that these two variants that arose during the second wave emerged  
111 from within Africa, with the B.1.525 from Nigeria, and then spread to other parts of the world.  
112 Our results show how regional connectivity in downsampled regions like Africa can often  
113 influence virus transmissions between neighbouring countries. Our findings demonstrate the  
114 power of genomic analysis when combined with mobility and epidemiological data to identify the  
115 drivers of transmission in the region, generating actionable information for public health decision  
116 makers in the region.

## 117 Introduction

118 With a population of over 200 million, Nigeria is the most populous country in Africa<sup>1</sup>. Since  
119 the first report of SARS-CoV-2 in Nigeria on the 27th of February 2020, the cumulative  
120 number of confirmed COVID-19 cases in Nigeria has risen to more than 265 000 as of mid-  
121 September 2022<sup>2</sup>. However, this burden is extremely low relative to SARS-Cov-2 infections  
122 in the rest of the world. Adjusting for population size, there have been 129 cases per 100  
123 000 people in Nigeria as of mid-September, compared to more than 34 700 and 28 700 in  
124 the UK and USA, and 2340 and 711 in Indonesia and Pakistan, respectively. Concurrently,  
125 Nigeria has also only had a little over 3000 reported deaths (2 per 100 000), compared to the  
126 UK and USA, which had 303 and 315 cumulative deaths per 100 000 people<sup>2</sup>. This relatively  
127 low but heterogeneous incidence in Nigeria and across the wider African region has been  
128 the cause of persistent speculation, including on the putative central role of case  
129 underascertainment<sup>3,4,5</sup>. The underlying cause remains understudied and is likely  
130 multifactorial, with many other factors speculated to contribute, including skewed age  
131 structures of populations, more restricted human mobility in certain regions, host genetics,  
132 environmental factors, and potential pre-existing population immunity to related viruses<sup>6,7</sup>.  
133 Before the emergence of globally sweeping variants such as Delta and Omicron, it was also  
134 unclear if the specific genetic diversity circulating in the African region may have contributed  
135 to the heterogeneous incidence and mortality observed<sup>8,9,10</sup>. It is therefore important to  
136 characterise the genomic epidemiology of SARS-CoV-2 in Nigeria over the course of the  
137 pandemic, to improve our understanding of what variants emerged to dominate the different  
138 epidemic waves. It is also important to improve our understanding of the drivers of  
139 transmission in the region, as this remains understudied in Africa and findings from other  
140 regions may not be generalizable<sup>9,11</sup>. Nigeria is highly connected to its neighbouring  
141 countries and the wider region, potentially acting as a dominant source of transmission via  
142 the high volume of movement across land as well as air borders<sup>12</sup>.

143 Several SARS-CoV-2 variants, which have a constellation of mutations that are biologically  
144 significant to the virus, emerged during the pandemic<sup>9,13,14</sup>. The B.1.525 (Eta) and B.1.1.318  
145 variants of interest (VOIs) dominantly co-circulated with the Alpha variant during the second  
146 wave in Nigeria from December 2020 to March 2021<sup>2</sup>. B.1.525 and B.1.1.318 were  
147 suggested to have emerged in Nigeria based on epidemiological reports from travellers in  
148 countries such as the UK, India, Mauritius, Canada, and Brazil<sup>15,16,17,18,19</sup>. Notably, B.1.525  
149 and B.1.1.318 both showed a significant increase in the infectivity of human and monkey cell  
150 lines experimentally, raising concerns of intrinsic increased transmissibility<sup>20</sup>. Both of these  
151 lineages also share the well-characterised E484K substitution in the Spike protein receptor-  
152 binding domain (RBD), which effectively reduces antibody neutralisation<sup>21</sup>.

153 In this study, we examine the genomic epidemiology of SARS-CoV-2 in Nigeria from March  
154 2020 to September 2021, across the first three epidemic waves. In particular, we investigate  
155 the timing and origin of the emergence of the B.1.525 and B.1.1.318 VOIs. In  
156 phylogeographic reconstructions, we characterized the source-sink profiles of these best-  
157 sampled VOIs to better understand the bidirectional transmission dynamics of SARS-CoV-2  
158 in Nigeria and the wider region. We compare our findings from our genomic data to  
159 integrated travel and epidemiological data to explore the role of Nigeria's regional and  
160 intercontinental connectivity in the estimated import and export dynamics.

161

## 162 Results

163

### 164 Lineage dynamics of SARS-CoV-2 in Nigeria over the first three epidemic waves

165

166 We generated a total of 1577 genomes from samples obtained between March 2020 and  
167 September 2021, across the first three waves of the pandemic (Fig. 1A and B). We collected  
168 samples from 25 of the 36 states and the Federal Capital Territory of Nigeria (Fig. 1C). The  
169 northern states were highly undersampled relative to the southern states, with sampling highly  
170 uneven across time (Fig. 1A and B).

171

172 To investigate the lineage dynamics across the different outbreak waves, we used the pangolin  
173 nomenclature tool to assign all sequences to corresponding lineages. We detected more than  
174 35 lineages across the first three waves (Fig. 1D). We found that a number of ancestral lineages  
175 circulated during the first wave, including A, B, B.1, and B.1.1 (Fig. 1D). The onset of community  
176 transmission in Nigeria was initially delayed, with the first wave initiated two months after the  
177 first case detection in March 2020. A nationwide lockdown and ban on local and international air  
178 travel were enforced, with the first wave ending in August 2020 after four months (Fig. 1B).  
179 During the lockdown, we found that there was up to a 50% decline in activity at workplaces,  
180 retail, supermarkets, and public transport stations, and up to a 25% increase in residential  
181 activity (Fig. 1E).

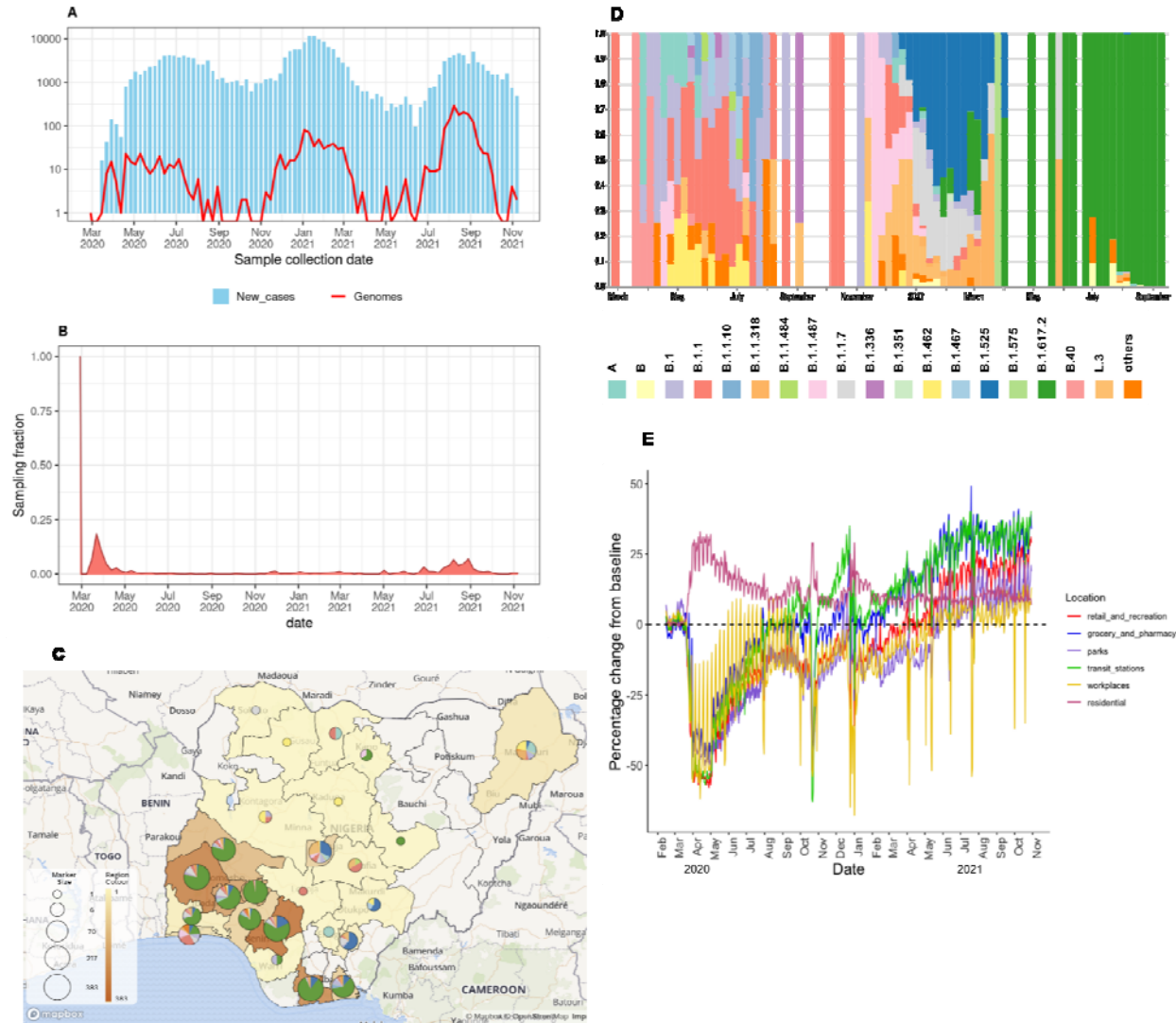
182

183 After this strictly adhered-to lockdown, Nigeria opened its airspace to international traffic in  
184 October 2020. This was shortly followed by an increase in new cases in November 2020,  
185 marking the start of the second wave (Fig. 1B), which was characterised by B.1.1.7, B.1.525,  
186 B.1.1.318 (VOC and VOI), and other variants such as L.3 and B.1.1.487 (Fig. 1D).

187

188 Our secondary analysis focused on the lineages (B.1.525 and B.1.1.318) that contributed to the  
189 surge during the second wave and have also been shown to possess genotypic traits for  
190 increased transmissibility and also increased virulence in human and animal cell lines, such as  
191 the E484K spike protein RBD mutation. We excluded B.1.1.7 from our analysis as it has already  
192 been well studied<sup>22,23</sup>, and it was not the dominant variant in Nigeria during the second wave,  
193 unlike in other places where it was reported, such as the UK and the USA<sup>24,25,26</sup>. Moreso, the  
194 second wave began after travel restrictions were lifted and human mobility was back to normal,  
195 thus the need to investigate the emergence of B.1.1.318 and B.1.525 in Nigeria. The third wave  
196 was initiated in June 2021, with the Delta variant (B.1.617.2) and its sub-lineages sweeping to  
197 dominance in sampling (Fig. 1B and D). In the secondary analysis described in this work, we  
198 also sought to identify the timings of emergence and number of introductions of these VOI.

It is made available under a [CC-BY-NC-ND 4.0 International license](https://creativecommons.org/licenses/by-nc-nd/4.0/).



199  
200

201 **Fig. 1:** Genomic epidemiology of SARS-CoV-2 in Nigeria. **A)** Reported daily news Epicurve of SARS-  
202 CoV-2 cases in Nigeria (blue bars) in Nigeria and genomes produced assembled during the first three  
203 waves (red line) with the y-axis transformed to a log-scale. **B)** Time-varying sampling fraction of genomes  
204 produced in this study per new cases **C)** Geographic distribution of sequences generated in the current  
205 study. The map of Nigeria shows the number of genomes from states across the country as region colour  
206 and marker size display lineages per state. **D)** Lineage frequency profile for the study period. The  
207 frequency of PANGO lineages across the country over a period of 80 weeks. Lineages that are not VOCs  
208 or VOIs, or that do not appear more than three times over the course of the pandemic, are grouped as  
209 "others". **E)** Human mobility data from Google for retail shops, pharmacies, parks, public transport,  
210 workplaces, and residential activity places from January 2020 to November 2021, as compared to the  
211 pre-pandemic baseline (January to February, 2021).

212  
213

### 214 **Regional connectivity drove the introduction of B.1.1.318 into Nigeria.**

215

216 Using Bayesian phylogeographic reconstructions, we investigated the timing and origin of the  
217 B.1.1.318 emergence to better understand Nigeria's connectivity in the global SARS-CoV-2  
218 transmission networks (see Methods). B.1.1.318 was first detected in Nigeria in Lagos State in

219 December 2020. The lineage was detected in multiple countries within and outside Africa,  
220 notably resulting in a large outbreak in Mauritius<sup>19</sup>.

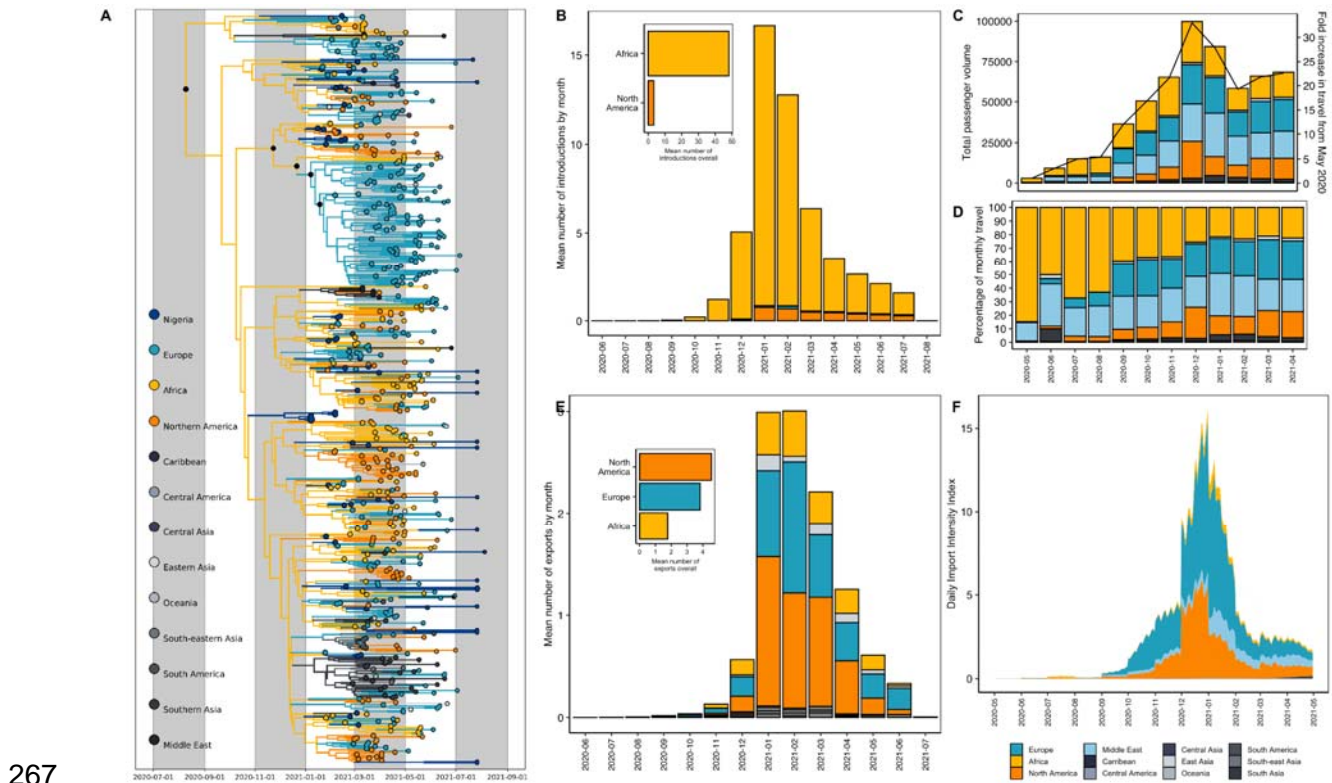
221  
222 In our phylogeographic reconstruction, we found that B.1.1.318 emerged in Africa (root state  
223 posterior support = 0.95-6) in early August [mean tMRCA = 5 August, 95% HPD 25 June to 20  
224 September] across two replicates (Fig. 2A). We estimated that B.1.1.318 was introduced to  
225 Nigeria on at least 53 independent occasions [mean introductions, 95% HPD 50-59] beginning  
226 in November 2020, after travel restrictions were lifted in October (Fig. 2B). We found that the  
227 majority of introductions originated from other African nations (Fig. 2B), indicating Nigeria's  
228 strong connectivity to the region. However, the number and origin of introductions and exports  
229 estimated from genomic data is sample dependent, with bidirectional transmission to and from  
230 undersampled regions obscured by uneven sampling globally. To overcome this, we quantified  
231 air travel patterns to and from Nigeria over time to better understand which countries were most  
232 likely to act as transmission sources or sinks based on their connectivity to Nigeria.

233  
234 Before travel restrictions were lifted in October 2020, we found that the low levels of incoming  
235 air travel volume predominantly originated from other African nations, followed by the Middle  
236 East (driven by the UAE) and Europe (driven by the UK) (Fig. 2C-D, SFigure 2). This suggests  
237 that the introduction risk was predominantly driven by regional connectivity during the period  
238 when travel restrictions were in place. We sought to investigate this further by quantifying the  
239 introduction risk for all countries connected to Nigeria by air travel. We estimated the  
240 introduction intensity index (III), which accounts for the number of cases in the source countries  
241 as well as the travel volume to Nigeria (see Methods). Overall, we found that the introduction  
242 risk from air travel was very low during the period of travel restrictions (May 2020 to October  
243 2020), as incoming travellers originated largely from other African nations with low incidence  
244 (Fig. 2F).

245  
246 We found that the number of incoming air passengers peaked in December 2020 - January  
247 2021 (Fig. 2C-D). We also observed that the number of inbound passengers from Europe, the  
248 Middle East, and Northern America increased relative to other African nations after restrictions  
249 were lifted, resulting in comparable volumes from Africa, Europe, and the Middle East (Fig. 2C-  
250 D). The 30-fold increase in incoming passengers by December 2020 was reflected in the  
251 corresponding peak in the III, attributable to increased introduction risk from Europe and North  
252 America from November 2020 into early 2021 (Fig. 2F). The surge was predominantly driven by  
253 the high-incidence second waves of the UK and USA, respectively (SFigure 1).

254  
255 We found that the III peak but not the estimated sources of risk were consistent with the number  
256 and origin of introductions of B.1.1.318 in our phylogeographic reconstructions (Fig. 2B). We  
257 estimated the highest introduction risk for Europe after travel restrictions were lifted, whereas  
258 the majority of introductions estimated from genomic data originated in other African countries.  
259 The III from other African nations was relatively low, despite comparable incoming air travel  
260 volume. This is likely both a factor of the relatively low incidence in most African countries  
261 during this period (Fig. 2F, SFigure 3) as well as the fact that our travel data does not account  
262 for land-based travel, which will expectedly severely underestimate the introduction risk from

263 surrounding countries. The ILL from the African region was largely driven by South Africa, which  
 264 was experiencing a peaked incidence from its second wave (SFigure 3). In our ILL analyses, we  
 265 found negligible introduction risk from outside of Europe and North America.  
 266



267

268 **Fig. 2: A)** Time-resolved B.1.1.318 phylogeny. Branches are coloured by region-level geographic state  
 269 reconstruction. Internal nodes annotated with black points represent posterior support > 0.75. **B)** Mean  
 270 number of introductions (Markov jumps) of B.1.1.318 into Nigeria from all source regions, binned by  
 271 month. The mean number of introductions overall (inset). **C)** Volume of monthly air passengers inbound  
 272 to Nigeria across 2020-2021 by source region (bar, left axis) and fold increase in travel volume  
 273 compared to May 2020 baseline. **D)** Estimated Introduction Intensity Index for Nigeria from 2020-2021. **E)**  
 274 Percentage of inbound air travel to Nigeria by source region across 2020-2021. See Supplementary  
 275 Figure 2 for country-level data.

## 276 The Eta variant of interest (B.1.525) likely emerged in Nigeria.

277

278 The B.1.525 (Eta) lineage drove the second wave from January to March 2021. B.1.525 was  
 279 initially reported to have originated in Nigeria or the UK<sup>16,17,18</sup>. We investigate the timing, origin,  
 280 and transmission dynamics of B.1.525 with Bayesian phylogeographic reconstructions (see  
 281 Methods). We estimated that the B.1.525 lineage emerged in Nigeria (root state posterior  
 282 support = 0.998) in late July [mean tMRCA 23 July, 95% HPD 7 June to 4 September], during  
 283 the final weeks of Nigeria's first wave (Fig. 3A). This suggests that this lineage circulated  
 284 cryptically for several months before its first detection in Nigeria on 12 December 2020, likely  
 285 owing to low-incidence-associated sparse sampling (Fig. 1A).  
 286

287 We sought to better understand Nigeria's connectivity in global SARS-CoV-2 transmission  
 288 networks by identifying the most likely destinations of B.1.525's exportation, as the lineage 1)  
 289 emerged in Nigeria and 2) is Nigeria's most sampled lineage, excluding the Delta variant



290 sublineages. To investigate the spread of B.1.525 from Nigeria, we reconstructed the timing and  
291 pattern of geographic transitions out of and into Nigeria across the full posterior of our Bayesian  
292 phylogeographic reconstructions. We estimated that B.1.525 was exported from Nigeria a lower  
293 bound of 295 times [mean Markov jumps, 95% HPD 259-335] (Fig. 3B). The majority of  
294 sampled exports were destined for Europe, followed by the rest of Africa and Northern America  
295 from December 2020 to March 2021 (encompassing Nigeria's second wave) (Fig. 3B). During  
296 this period, we also found that B.1.525 was re-introduced from Europe a lower bound of 20  
297 [95% HPD 6-37] times (Fig. 3E). These estimated source-sink dynamics support Nigeria's  
298 strong connectivity, particularly to Europe, but will underestimate exports to undersampled  
299 regions such as neighbouring African countries. To mitigate the effect of global sampling biases  
300 on genomic estimates of transmission dynamics, we again analysed changes in air travel to and  
301 from Nigeria over time to understand the sources and seeds of Nigeria's bidirectional  
302 transmission dynamics.

303

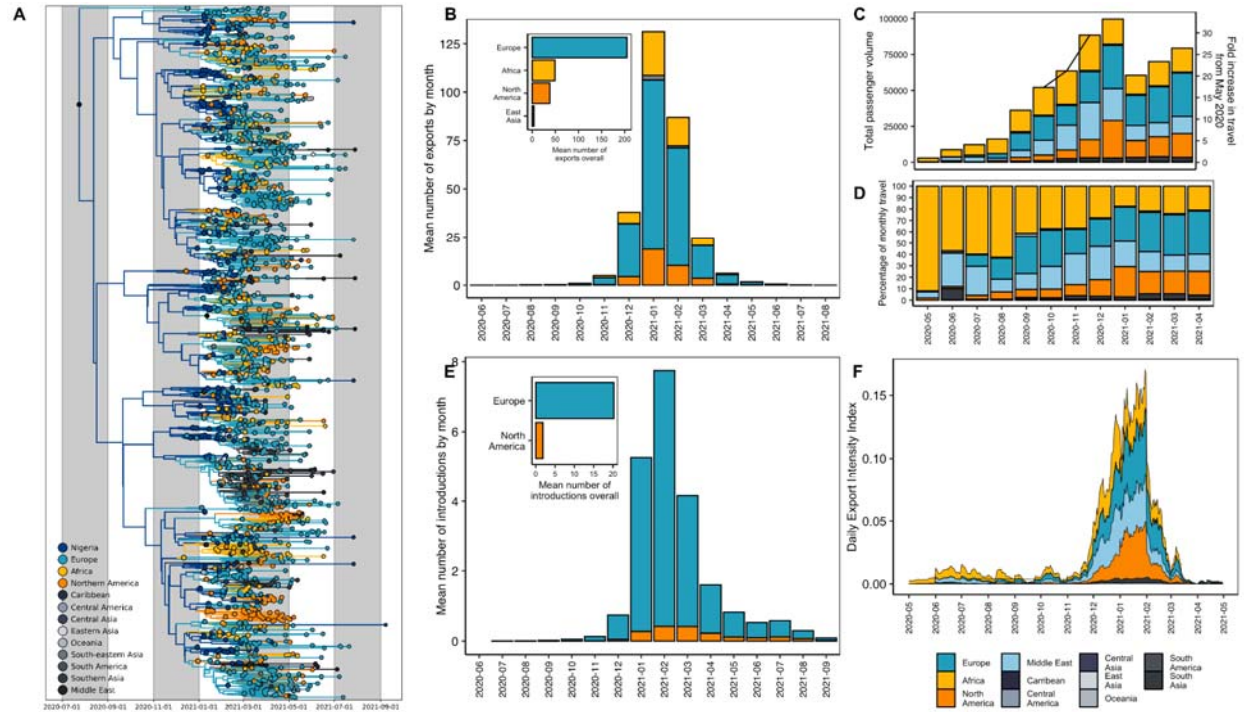
304 African nations dominated the reduced level of outbound travel during the period of travel  
305 restrictions (May to October 2020) (Fig. 3C-D), suggesting that regional connectivity drove  
306 Nigeria's export risk during this period. We integrated the air travel data with Nigeria's epidemic  
307 incidence data to quantify an exportation intensity index (EII)<sup>27</sup>. The EII quantifies the temporal  
308 trend in the daily estimated number of viral exports from Nigeria to sink countries (see  
309 Methods). Given the data available, Nigeria's estimated export intensity was low overall  
310 compared to countries with high air traffic data to Nigeria, as the country's SARS-CoV-2  
311 incidence remained comparatively low on a global-scale for the entire period under investigation  
312 (Fig. 3F). Nigeria's first wave had relatively low incidence, peaking at about 4000 cases in a  
313 week in late June (week 18) (SFigure 4B). Combined with reduced travel volumes, the period  
314 from May 2020 to September 2020 was characterised by negligible export intensity (Fig. 3F).

315

316 Outbound air travel recovered gradually over 2020, peaking in December 2020 - January 2021  
317 (Fig. 3C-D). We found that this peak corresponded with the peak of the larger second wave in  
318 Nigeria and therefore also the EII, as well as the distribution of exports of B.1.1.525 from Nigeria  
319 (Fig. 3B, F). The proportion of outbound air travel destined for countries in Europe, the Middle  
320 East, and North America increased relative to travel destined for African countries after travel  
321 restrictions were lifted (Fig. 3C-D). We estimated the highest EII for Europe (driven  
322 predominantly by travel to the UK) and Northern America (driven by travel to the USA) from  
323 December 2020 to February 2021 (SFigure 4). The export intensity to Europe is consistent with  
324 the high number of estimated exports in the genomic data, though North America was  
325 disproportionately underestimated in the genomic data (Fig. 3B). Overall, air travel volume  
326 destined for Europe was only moderately higher (10%) than Africa, North America, and the  
327 Middle East from December (after first detection and at the start of the second wave) to April  
328 2021 (end of the second wave) (Fig. 3C-D). However, Europe had 4-fold more sampled  
329 introductions of B.1.525 than African nations or the USA. Notably, the comparatively high EII for  
330 the Middle East region (representing 20% of outbound volume overall) was not represented in  
331 our phylogeographic reconstructions (Fig. 3B). This highlights how unevenly distributed  
332 surveillance capacity can lead to an underestimation of transmission events (SFigure 3A).

333

334



335  
336 **Fig. 3: A)** Time-resolved B.1.525 phylogeny. Branches are coloured by region-level geographic state  
337 reconstruction. Internal nodes annotated with black points represent posterior support > 0.75. **B)** Mean  
338 number of exports (Markov jumps) of B.1.525 from Nigeria to destination regions, binned by month. Mean  
339 number of exports overall (inset). **C)** Volume of monthly air passengers outbound from Nigeria across  
340 2020 - 2021 by destination region (bar, left axis) and fold increase in travel volume compared to baseline  
341 (May 2020). **D)** Percentage of outbound air travel from Nigeria by destination region across 2020-2021.  
342 See Supplementary Figure 1 for country-level data. **E)** Mean number of introductions (Markov jumps) of  
343 B.1.525 into Nigeria from all origin regions, binned by month. The mean number of introductions overall  
344 (inset). **F)** Estimated Exportation Intensity Index (EII) for Nigeria from 2020-2021.

345

346

## 347 Discussion

348

349 In this study, we combined genomic, travel and epidemiological data to characterise the  
350 emergence and bidirectional transmission of two focal variants of interest in Nigeria. The focal  
351 VOIs, B.1.525 and B.1.1.318, were suggested to have emerged in Nigeria before spreading  
352 globally, resulting in large-scale outbreaks in Brazil and Mauritius<sup>15,19</sup>. In our phylogeographic  
353 reconstructions, we found that the B.1.1.318 lineage most likely emerged in the African region in  
354 early August 2020, with its dominance in Nigeria driven by multiple introductions during the  
355 second wave from November 2020 onwards. Our import risk index underestimates the  
356 importance of regional connectivity in driving these introduction estimates, as they likely result  
357 from shorter distance connectivity to surrounding countries, which we could not collect data on.  
358 We also found that the Eta variant (B.1.525) emerged in Nigeria in late July, with high levels of  
359 export to Europe reflected in the genomic and estimated export index.

360

361 The true extent of bidirectional transmission with other African nations will be severely  
362 underestimated in phylogeographic reconstructions, as Africa remains disproportionately  
363 undersampled despite heroic efforts<sup>28</sup>. Our findings should be interpreted in the light of our own  
364 sampling fraction, which was 0.026%. We attempted to mitigate these global surveillance biases  
365 by supplementing genomic estimates with sampling-independent metrics like the introduction

366 and export intensity indices. However, these metrics are dependent on epidemiological  
367 incidence and will be underestimated if there is large-scale underascertainment in source  
368 countries, as previously shown for African (and other) nations based on excess mortality  
369 data<sup>29,30,31</sup>.

370

371 At an unprecedented speed (72 hours from receiving the sample), ACEGID generated the first  
372 whole-genome sequence of the virus in Africa in March 2020. This catalysed and built  
373 confidence in SARS-CoV-2 genomic sequencing on the African continent. This immense  
374 collaborative effort, involving seventeen partner laboratories in Nigeria, helped to characterise  
375 the pandemic in near real-time during its first three waves in the country. As we have learnt the  
376 hard way in recent years, novel variants of interest or concern can emerge from anywhere  
377 around the world, notably including undersampled regions such as Africa<sup>13,14</sup>. In a highly  
378 connected world, there is a proactive need to adopt early warning systems for pandemic  
379 preemption and response in Africa, such as SENTINEL<sup>32</sup>. This would enable equality in global  
380 genomic surveillance, especially in countries with fragile public health systems, in order to  
381 effectively detect and curb emerging outbreaks before they spread.

382

## 383 **Methods**

384

### 385 **Sample preparation**

386

387 RNA was extracted from nasopharyngeal swabs in viral transport media and saliva/sputum in  
388 PBS using the QiAmp viral RNA mini kit (Qiagen) according to the manufacturer's instructions  
389 and MagMax pathogen RNA/DNA kit (Applied Biosystems) using a Kingfisher Flex purification  
390 system (ThermoFisher Scientific) according to the manufacturer's instructions.

391

### 392 **Probe-based SARS-CoV-2 real-time RT-PCR**

393

394 RT-qPCR screening of suspected samples was carried out targeting N, ORF1ab and RdRP  
395 genes of the virus using commercially available kits: genesig® (Primerdesign Ltd, UK),  
396 DaAnGene (Daan Gene Co., Ltd, China), Liferiver (Shanghai ZJ Bio-Tech Co., Ltd, China),  
397 Genefinder (OSANG Healthcare Co., Ltd, Korea), and Sansure (Sansure Biotech Inc., China).

398

### 399 **SARS-CoV-2 whole-genome sequencing**

400

401 Samples with moderate to high viral load detected with RT-qPCR (Ct value < 30) were selected  
402 for sequencing, which were samples collected from genomic surveillance and hospitalised  
403 individuals spatially and temporally. The sampling gap was the inability to sequence samples  
404 from every state during all different waves of the pandemic in Nigeria. The Illumina COVIDseq  
405 protocol was used for sequencing preparation (<https://www.illumina.com/products/by-type/clinical-research-products/covidseq-assay.html>). RNA was converted to cDNA, followed by  
406 tiling amplification (400 bp) with ARTIC V3 primer pools, which covers the whole genome of the  
407 virus. Nextera DNA flex libraries were made from the amplicons. Libraries were pooled and  
408 sequenced on the Illumina MiSeq, NextSeq 2000, and NovaSeq 6000 platforms at the African  
409 Center of Excellence for Genomics of Infectious Diseases (ACEGID), Redeemer's University,  
410 Ede, Nigeria.

411

### 413 **Genome Assembly**

414

415 We used the viral-ngs pipeline v2.1.19 (<https://github.com/broadinstitute/viral-ngs>) for  
416 demultiplexing, quality control, and genome assembly, consistent with prior work<sup>33,34,35</sup>. The  
417 demux\_plus applet of viral-ngs was used for demultiplexing basecalls to BAM files. Genome  
418 assembly was carried out using the assemble\_refbased workflow on the viral-ngs pipeline which  
419 maps each unmapped BAM file to the SARS-CoV-2 reference genome (NC\_045512.2) to  
420 generate coverage plots and FASTA files of successfully assembled genomes.

421

422

### 423 **Lineage/clade assignment**

424

425 We used Phylogenetic Assignment of Named Global Outbreak LINEages (PANGOLIN)<sup>36</sup> to  
426 identify the lineages of SARS-CoV-2 circulating within Nigeria and to identify the lineages  
427 circulating in specific states of Nigeria. Nextclade (<https://clades.nextstrain.org/>) was used to  
428 assign the sequences to globally circulating viral clades and to investigate mutations in the  
429 genome that could affect primer amplification during PCR.

430

### 431 **Maximum likelihood phylogenetic analysis**

432

433 1,577 genomes with sequence length  $\geq 20,930$  (covering 70% or more of the reference -  
434 NC\_045512.2) were assembled and aligned using MAFFT<sup>37</sup>. We used IQTREE<sup>38</sup> and the GTR  
435 (generalised time-reversible) model with a bootstrap value of 1000 to construct the phylogenetic  
436 tree. Treetime<sup>39</sup> was used for quantifying the molecular clock and identifying ancestral  
437 phylogeny in the augur pipeline of Nextstrain<sup>40</sup>.

438

### 439 **Bayesian phylogenetic analysis**

440

441 All B.1.1.318 (n = 3,858 with major locations: Europe, USA, and Africa accounting for 94%) and  
442 B.1.525 (n = 8,278 with major locations: Europe, USA, and Africa accounting for 86%)  
443 sequences were downloaded from GISAID<sup>41</sup> on 18 August 2021. Sequences with > 5%  
444 ambiguous nucleotides, a length < 95%, or incomplete dates were discarded. Sequences were  
445 aligned to the reference (NC\_045512.2) using minimap2, with the 5' and 3' UTRs and known  
446 problematic sites (GitHub - W-L/ProblematicSites\_SARS-CoV2 3) masked<sup>42</sup>. Both lineage-  
447 specific datasets were downsampled for representativeness and computational tractability with  
448 a phylogenetic-informed downsampling scheme. A maximum-likelihood phylogeny was  
449 reconstructed for each lineage with automatic model selection in IQTREE<sup>43</sup>. The phylogeny was  
450 downsampled by root-to-tip tree-traversal, with all internal nodes subject to two rules: 1) if 95%  
451 of the leaves subtended by the internal node represented a single country, the earliest  
452 representative was retained alongside a random sequence; 2) if leaves from the same location  
453 were separated by a zero-branch length, the earliest representative was retained alongside a  
454 random sequence. All countries with more than the median number of sequences across  
455 countries were then downsampled randomly to the median, this yielded a total number of 1,118  
456 and 1,746 genomes for B.1.1.318 and B.1.525 respectively. All Nigerian sequences were  
457 retained (n = 73 for B.1.1.318; n = 256 for B.1.525).

458

459 We reconstructed Bayesian time-scaled phylogenies for each lineage using BEAST 1.10.5<sup>44</sup>.  
460 For both lineages, the time-scaled phylogenies were reconstructed under an HKY substitution  
461 model with a gamma-distributed rate for variation among sites<sup>45</sup>, a relaxed molecular clock with  
462 a log-normal prior<sup>46</sup>, and an exponential growth coalescent tree prior<sup>47</sup>. For each dataset, we  
463 combined two independent Markov Chain Monte Carlo (MCMC) chains of 200 million states, run  
464 with the BEAGLE package<sup>48</sup> to improve run time. Parameters and trees were sampled every  
465 20,000 steps, with the first 20% of steps discarded as burn-in. Convergence and mixing of the

466 MCMC chains were assessed in Tracer v1.7, to ensure the effective sample size (ESS) of all  
467 estimated parameters was  $> 200$ <sup>49</sup>.

468

469 We performed an asymmetric discrete trait analysis using BEAST version 1.10.5 to reconstruct  
470 the location-transition history across an empirical distribution of 4000 time-calibrated trees  
471 (sampled from each of the posterior tree distributions estimated above). We aggregated the  
472 country of sampling on a regional level for computational tractability. We used Bayesian  
473 stochastic search variable selection (BSSVS) to infer non-zero migration rates and identify the  
474 statistically supported transition routes into and out of Nigeria by a Bayes factor test<sup>50</sup>. In  
475 addition to the discrete trait analysis, we used a Markov jump counting approach to estimate the  
476 timing and origin of geographic transitions into Nigeria to account for uncertainty in  
477 phylogeographic reconstruction associated with sparse sampling and low sequence variability<sup>51</sup>.  
478 We used the TreeMarkovJumpHistoryAnalyzer from the pre-release version of BEAST 1.10.5 to  
479 extract the Markov jumps from posterior tree distributions<sup>52</sup>. We used TreeAnnotator 1.10 to  
480 construct Maximum clade credibility (MCC) trees for all datasets. Trees were visualised using  
481 baltic (<https://github.com/evogytis/baltic>).

482

#### 483 **Air traffic and human movement data**

484

485 In order to associate international air travel and local human movement with variant movement  
486 across borders, we used air traffic data from the International Air Transportation Association  
487 (IATA) obtained from BlueDot (<https://bluedot.global/>) to quantify the volume of international  
488 travellers to and from Nigeria. The dataset included the number of travellers by origin and  
489 destination country, aggregated by month, across all international airports in Nigeria. Data was  
490 obtained for the period May 2020 to April 2021, encompassing the emergence and spread of  
491 B.1.525 and B.1.1.318. We also curated human movement data within Nigeria from Google  
492 Mobility (<https://www.google.com/covid19/mobility/>) from January 2020 to November 2021,  
493 which reflects a baseline before lockdown (January - March 2020) and the study's period of  
494 interest. We used R to display movement patterns after grouping human movement into six  
495 divisions: retail & recreation, grocery & pharmacy, parks, transport stations, workplaces, and  
496 residential areas.

497

#### 498 **Estimated introduction and exportation intensity index**

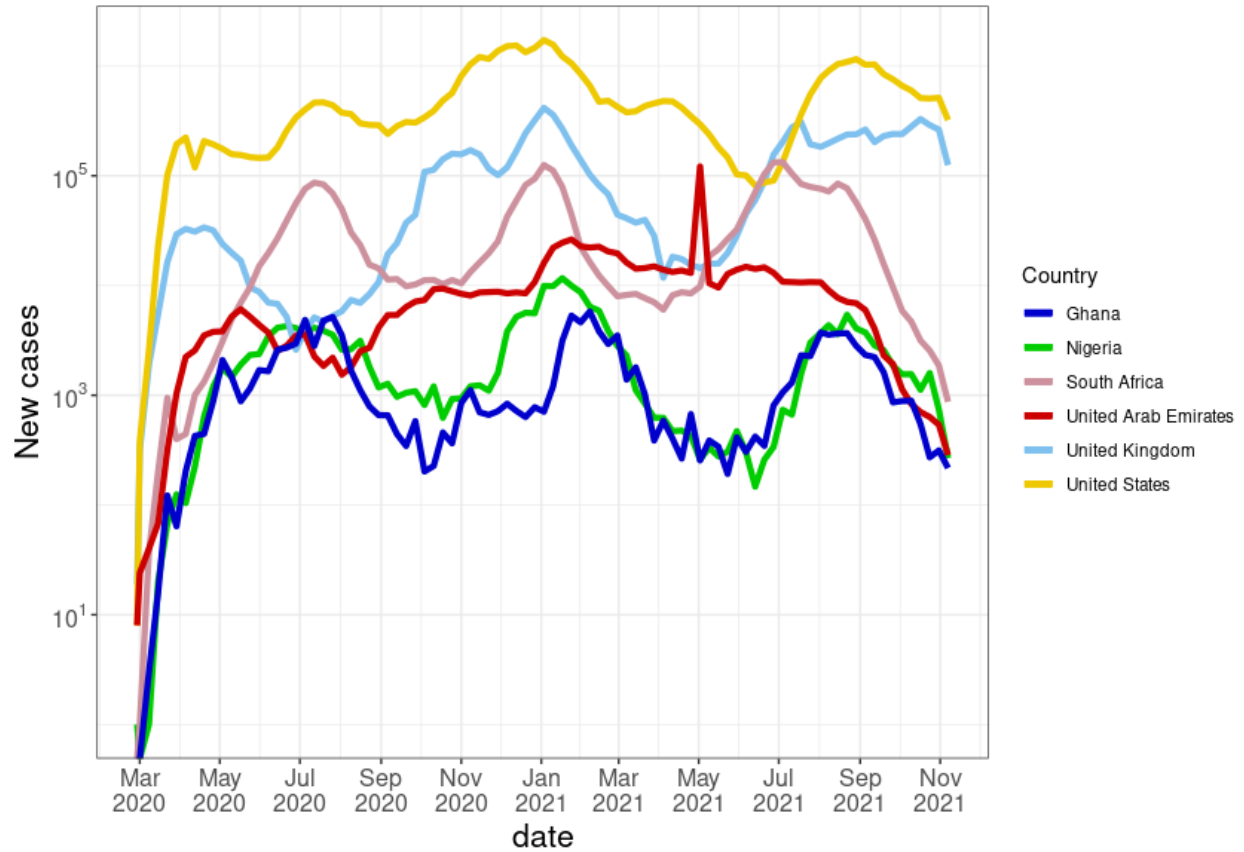
499

500 From genomic data, estimates of the number and origin/destination of bidirectional  
501 transmissions with Nigeria are dependent on the sample's representativeness of the population  
502 and are therefore limited by global and local sampling biases. To limit these sampling biases,  
503 we supplemented our phylogeographic analyses by estimating the introduction (III) and export  
504 intensity index (EII) according to Du Plessis et al<sup>27</sup>. The III estimates the daily risk of introductions  
505 into Nigeria from each country as a product of the number of asymptotically infected  
506 individuals in each source country on that day (estimated from the time series of deaths) and  
507 their likelihood of traveling to Nigeria (based on the volume of inbound air travel from the source  
508 country). The EII is calculated similarly, based on the number of asymptotically infected  
509 individuals in Nigeria and their likelihood of travel to each destination by air. Notably, we could  
510 not obtain data for land-based travel. Connectivity to regional and neighbouring countries and  
511 the associated introduction and export intensity are therefore likely severely underestimated. A  
512 time series of reported deaths for each country were collected from the outbreak.info R

513 package<sup>53</sup>. As air travel data was aggregated by month, we conservatively assumed that travel  
514 was uniform across all days of the month. We quantified the IIL and EIL for the period May 2020  
515 to April 2021, encompassing the emergence and spread of B.1.525 and B.1.1.318.

516  
517  
518  
519  
520  
521  
522  
523  
524  
525

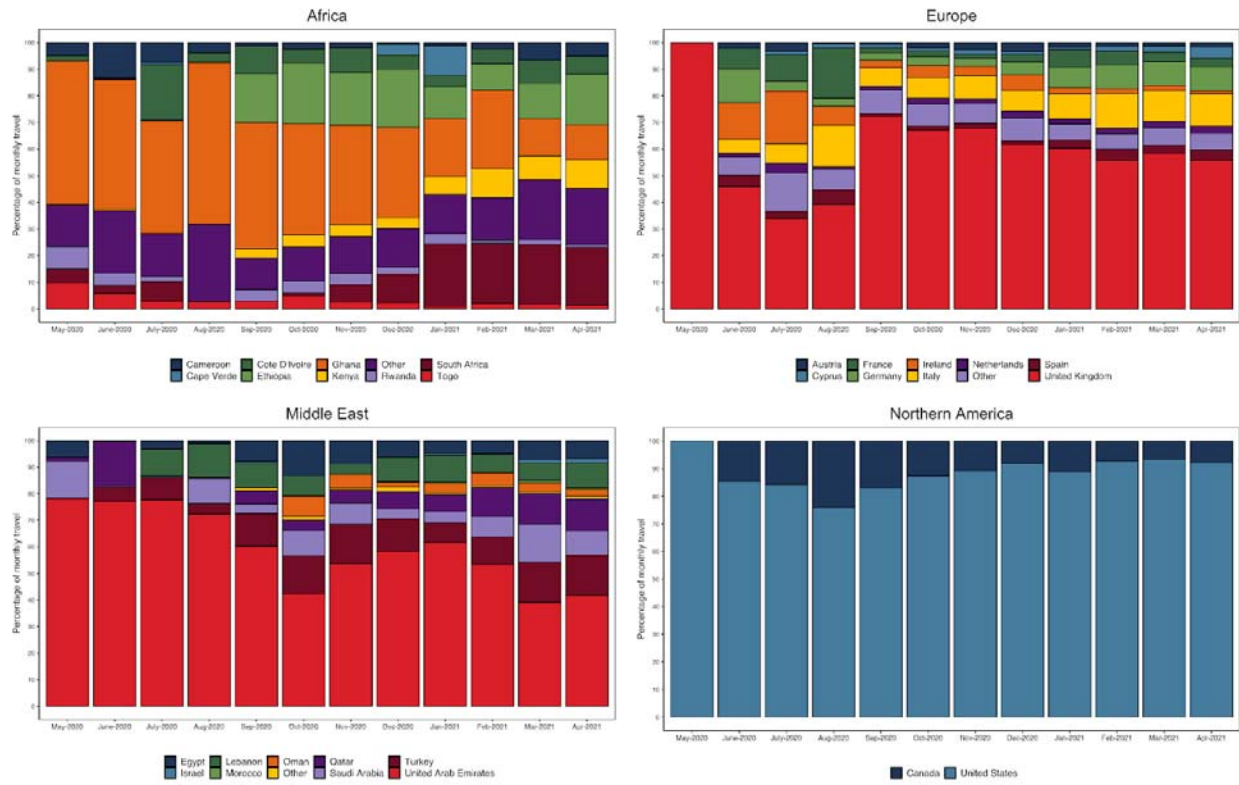
526 **Supplementary figures**



527 **SFigure 1:** COVID-19 new cases per week as seen in Nigeria and countries with highest flight traffic in  
528 and out of Nigeria from the four major connected regions with the y-axis transformed to a log scale.  
529  
530  
531

It is made available under a [CC-BY-NC-ND 4.0 International license](https://creativecommons.org/licenses/by-nc-nd/4.0/) .

532  
533

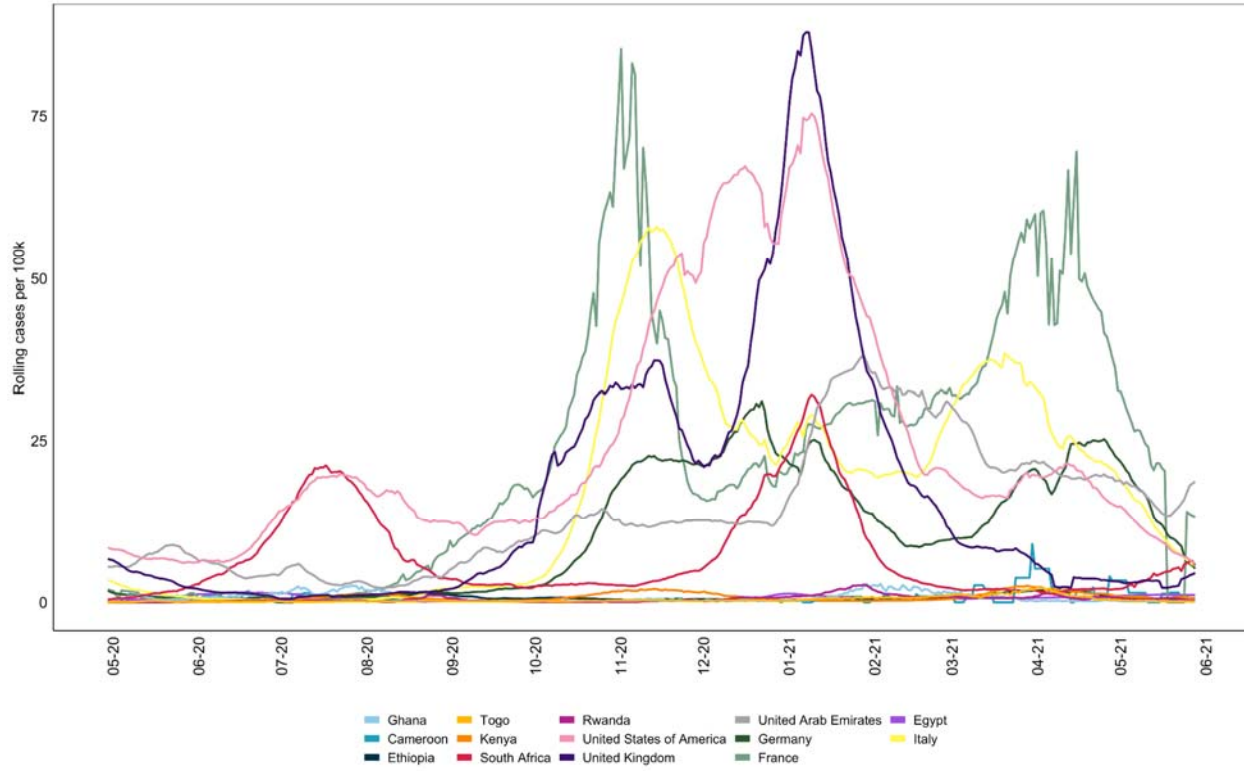


534  
535  
536  
537  
538  
539  
540

**Figure 2:** Percentage of incoming travel from the four major connected regions by country as per Figure 3



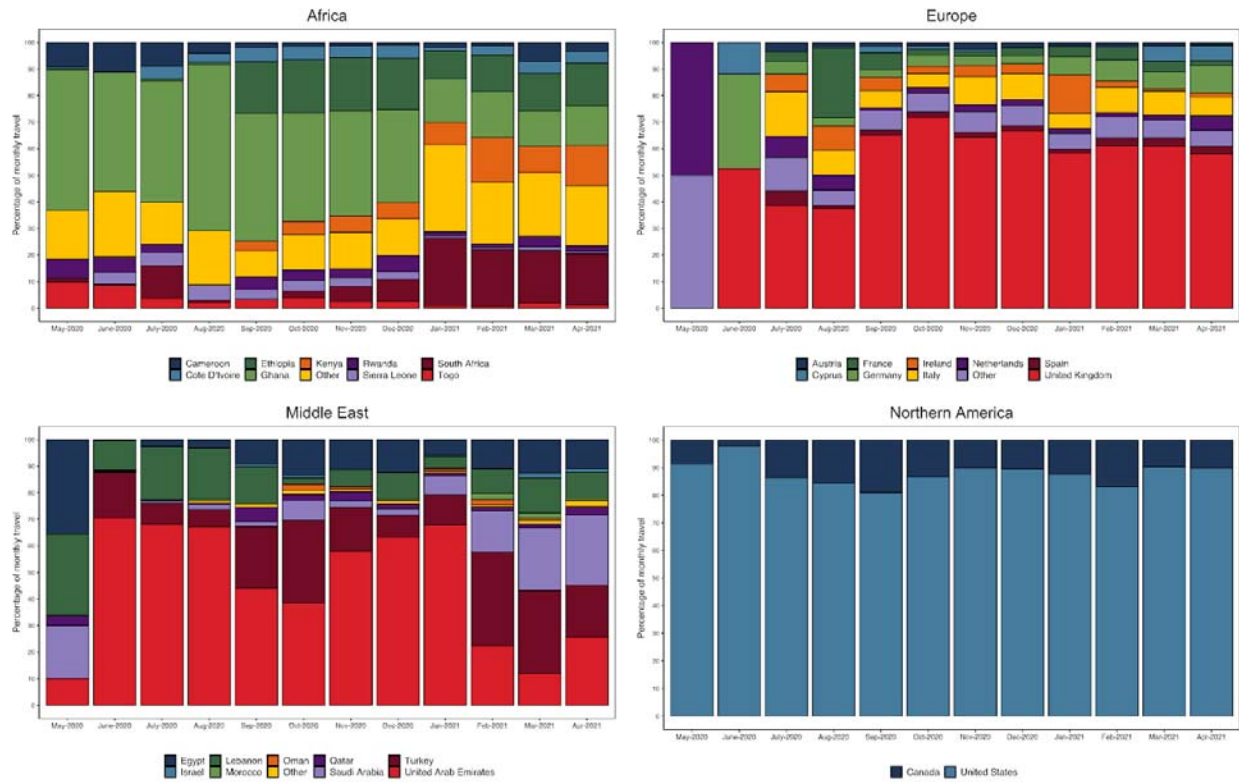
It is made available under a [CC-BY-NC-ND 4.0 International license](https://creativecommons.org/licenses/by-nc-nd/4.0/) .



541  
542  
543  
544  
545

**Figure 3:** Population adjusted rolling average of new daily cases for countries with the highest incoming air travel as per Figure S2.

546



547  
548  
549  
550  
551  
552  
553  
554  
555  
556  
557  
558  
559

**Figure 4:** Percentage of outgoing travel to the four major connected regions by country as per Figure 4

## 560 Acknowledgements

561

562 This work is made possible by the support provided to ACEGID by a cohort of generous donors  
563 through TED's Audacious Project, including the ELMA Foundation, MacKenzie Scott, the Skoll  
564 Foundation, and Open Philanthropy. This work was also partly supported by grants from the  
565 National Institute of Allergy and Infectious Diseases (<https://www.niaid.nih.gov>), NIH-H3Africa  
566 (<https://h3africa.org>) (U01HG007480 and U54HG007480), the World Bank (projects ACE-019  
567 and ACE-IMPACT), the Rockefeller Foundation (Grant #2021 HTH), the Africa CDC through the  
568 African Society of Laboratory Medicine [ASLM] (Grant #INV018978), the Wellcome Trust  
569 (Project 216619/Z/19/Z), the WARN-ID/CREID grant # U01AI151812, and the Science for Africa  
570 Foundation.

571 We want to especially thank the Redeemer's University Management, the State Government of  
572 Osun and NCDC for their support during the course of the COVID-19 pandemic.

573

574

## 575 References

576

577 1. World Bank, World Development Indicators (2022). Available at: <http://wdi.worldbank.org/tables>  
578 (Accessed: 29th April 2022).

579

580 2. Tsueng G, Mullen J, Alkuzweny M, Cano M, Benjamin HR, Emily O, Curators L, Alaa A, Zhou X, Qian  
581 Z, Andersen KG. Outbreak. info Research Library: A standardized, searchable platform to discover and  
582 explore COVID-19 resources and data. *BioRxiv*. 2022 Feb 1.

583

584 3. Nordling L. The pandemic appears to have spared Africa so far. Scientists are struggling to explain  
585 why. *Science* (80- ). 2020 Aug 11;

586

587 4. Kreier F. Morgue data hint at COVID's true toll in Africa. *Nature*. 2022 Mar 23.

588

589 5. Tessema SK, Nkengasong JN. Understanding COVID-19 in Africa. *Nature Reviews Immunology*. 2021  
590 Aug;21(8):469-70.

591

592 6. Gilbert, M., Pullano, G., Pinotti, F., Valdano, E., Poletto, C., Boëlle, P.Y., d'Ortenzio, E., Yazdanpanah,  
593 Y., Eholie, S.P., Altmann, M. and Gutierrez, B., 2020. Preparedness and vulnerability of African countries  
594 against importations of COVID-19: a modelling study. *The Lancet*, 395(10227), pp.871-877.

595

596 7. Borrega, R., Nelson, D.K., Koval, A.P., Bond, N.G., Heinrich, M.L., Rowland, M.M., Lathigra, R., Bush,  
597 D.J., Aimukanova, I., Phinney, W.N. and Koval, S.A., 2021. Cross-reactive antibodies to SARS-CoV-2  
598 and MERS-CoV in pre-COVID-19 blood samples from Sierra Leoneans. *Viruses*, 13(11), p.2325.

599

600 8. Bugembe DL, Phan MV, Ssewanyana I, Semanda P, Nansumba H, Dhaala B, Nabadda S, O'Toole  
601 ÁN, Rambaut A, Kaleebu P, Cotten M. Emergence and spread of a SARS-CoV-2 lineage A variant (A.  
602 23.1) with altered spike protein in Uganda. *Nature microbiology*. 2021 Aug;6(8):1094-101.

603

604 9. Butera Y, Mukantwari E, Artesi M, O'Toole ÁN, Hill V, Rooke S, Hong SL, Dellicour S, Majyambere O,  
605 Bontems S, Boujemla B. Genomic sequencing of SARS-CoV-2 in Rwanda reveals the importance of  
606 incoming travelers on lineage diversity. *Nature communications*. 2021 Sep 29;12(1):1-1.

607

- 608 10. Wilkinson E, Giovanetti M, Tegally H, San JE, Lessells R, Cuadros D, Martin DP, Rasmussen DA,  
609 Zekri AR, Sangare AK, Ouedraogo AS. A year of genomic surveillance reveals how the SARS-CoV-2  
610 pandemic unfolded in Africa. *Science*. 2021 Oct 22;374(6566):423-31.  
611
- 612 11. Parker E, Anderson C, Zeller M, Tibi A, Havens JL, Laroche G, Benlarbi M, Ariana A, Robles-Sikisaka  
613 R, Latif AA, Watts A. Regional connectivity drove bidirectional transmission of SARS-CoV-2 in the Middle  
614 East during travel restrictions. *Nature communications*. 2022 Aug 15;13(1):1-4.  
615
- 616 12. Bogoch II, Creatore MI, Cetron MS, Brownstein JS, Pesik N, Miniota J, Tam T, Hu W, Nicolucci A,  
617 Ahmed S, Yoon JW. Assessment of the potential for international dissemination of Ebola virus via  
618 commercial air travel during the 2014 west African outbreak. *The Lancet*. 2015 Jan 3;385(9962):29-35.  
619
- 620 13. Tegally H, Wilkinson E, Giovanetti M, Iranzadeh A, Fonseca V, Giandhari J, Doolabh D, Pillay S, San  
621 EJ, Msomi N, Mlisana K. Detection of a SARS-CoV-2 variant of concern in South Africa. *Nature*. 2021  
622 Apr;592(7854):438-43.  
623
- 624 14. Viana, R., Moyo, S., Amoako, D.G., Tegally, H., Scheepers, C., Althaus, C.L., Anyaneji, U.J., Bester,  
625 P.A., Boni, M.F., Chand, M. and Choga, W.T., 2022. Rapid epidemic expansion of the SARS-CoV-2  
626 Omicron variant in southern Africa. *Nature*, 603(7902), pp.679-686.  
627
- 628 15. Pereira, F. et al. Genomic surveillance activities unveil the introduction of the SARS-CoV-2 B.1.525  
629 variant of interest in Brazil: Case report. *Journal of Medical Virology*, 93, 9, 5523–5526 (2021).  
630
- 631 16. Dresch, M. Nigerian Covid-19 variant under investigation with 38 new cases found.  
632 <https://www.mirror.co.uk/news/uk-news/breaking-nigerian-covid-19-variant-23511168> (2021) (Accessed  
633 24th March, 2022).
- 634 17. Vadlapatla, S. B.1.525 Variant Linked to Nigeria now Found in Telangana -  
635 [https://timesofindia.indiatimes.com/city/hyderabad/b-1-525-variant-linked-to-nigeria-now-found-in-](https://timesofindia.indiatimes.com/city/hyderabad/b-1-525-variant-linked-to-nigeria-now-found-in-telangana/articleshow/83133727.cms)  
636 [telangana/articleshow/83133727.cms](https://timesofindia.indiatimes.com/city/hyderabad/b-1-525-variant-linked-to-nigeria-now-found-in-telangana/articleshow/83133727.cms). (2021) (Accessed 24th March, 2022).
- 637 18. Takeuchi C. COVID-19 in B.C.: New variant from Nigeria detected, ski awareness campaign  
638 launched, and more. [https://www.straight.com/covid-19-pandemic/february-12-coronavirus-update-bc-](https://www.straight.com/covid-19-pandemic/february-12-coronavirus-update-bc-vancouver-new-variant-from-nigeria-detected-ski-awareness-campaign-and-more)  
639 [vancouver-new-variant-from-nigeria-detected-ski-awareness-campaign-and-more](https://www.straight.com/covid-19-pandemic/february-12-coronavirus-update-bc-vancouver-new-variant-from-nigeria-detected-ski-awareness-campaign-and-more)Takeuchi. (2021)  
640 (Accessed 24th March, 2022).
- 641
- 642 19. Tegally, H. et al. A novel and expanding SARS-CoV-2 Variant, B. 1.1. 318, dominates infections in  
643 Mauritius. *medRxiv* <https://doi.org/10.1101/2021.06.16.21259017> (2021).  
644
- 645 20. Zhang L, Cui Z, Li Q, Wang B, Yu Y, Wu J, Nie J, Ding R, Wang H, Zhang Y, Liu S. Ten emerging  
646 SARS-CoV-2 spike variants exhibit variable infectivity, animal tropism, and antibody neutralization.  
647 *Communications biology*. 2021 Oct 13;4(1):1-0.  
648
- 649 21. Weisblum Y, Schmidt F, Zhang F, DaSilva J, Poston D, Lorenzi JC, Muecksch F, Rutkowska M,  
650 Hoffmann HH, Michailidis E, Gaebler C. Escape from neutralizing antibodies by SARS-CoV-2 spike  
651 protein variants. *Elife*. 2020 Oct 28;9:e61312.  
652
- 653 22. Galloway SE, Paul P, MacCannell DR, Johansson MA, Brooks JT, MacNeil A, Slayton RB, Tong S,  
654 Silk BJ, Armstrong GL, Biggerstaff M. Emergence of SARS-CoV-2 b. 1.1. 7 lineage—united states,  
655 december 29, 2020–january 12, 2021. *Morbidity and Mortality Weekly Report*. 2021 Jan 1;70(3):95.  
656
- 657 23. Emary KR, Golubchik T, Aley PK, Ariani CV, Angus B, Bibi S, Blane B, Bonsall D, Cicconi P, Charlton  
658 S, Clutterbuck EA. Efficacy of ChAdOx1 nCoV-19 (AZD1222) vaccine against SARS-CoV-2 variant of

- 659 concern 202012/01 (B. 1.1. 7): an exploratory analysis of a randomised controlled trial. *The Lancet*. 2021  
660 Apr 10;397(10282):1351-62.  
661
- 662 24. Chaillon, A. & Smith, D. M. Phylogenetic analyses of SARS-CoV-2 B.1.1.7 lineage suggest a single  
663 origin followed by multiple exportation events versus convergent evolution. *Clinical Infectious Diseases*  
664 **73**, 12, 2314–2317 (2021).  
665
- 666 25. Washington, N. L. et al. (2021). Emergence and rapid transmission of SARS-CoV-2 B.1.1.7 in the  
667 United States. *Cell* **184**, 10, 2587-2594.  
668
- 669 26. Davies, N. G. et al. Estimated transmissibility and impact of SARS-CoV-2 lineage B. 1.1. 7 in England.  
670 *Science* **372**, 6538, eabg3055 (2021).  
671
- 672 27. du Plessis, L. et al. Establishment and lineage dynamics of the SARS-CoV-2 epidemic in the UK.  
673 *Science (New York, N.Y.)*, **371**, 6530, 708–712 (2021).  
674
- 675 28. Tegally H, San JE, Cotten M, Tegomoh B, Mboowa G, Martin DP, Baxter C, Moir M, Lambisia A,  
676 Diallo A, Amoako DG. The evolving SARS-CoV-2 epidemic in Africa: Insights from rapidly expanding  
677 genomic surveillance. medRxiv. 2022 Jan 1.  
678
- 679 29. Kleynhans J, Tempia S, Wolter N, von Gottberg A, Bhiman JN, Buys A, Moyes J, McMorro ML,  
680 Kahn K, Gómez-Olivé FX, Tollman S. SARS-CoV-2 Seroprevalence in a rural and urban household  
681 cohort during first and second waves of infections, South Africa, July 2020–March 2021. *Emerging*  
682 *infectious diseases*. 2021 Dec;27(12):3020.  
683
- 684 30. Wang H, Paulson KR, Pease SA, Watson S, Comfort H, Zheng P, Aravkin AY, Bisignano C, Barber  
685 RM, Alam T, Fuller JE. Estimating excess mortality due to the COVID-19 pandemic: a systematic analysis  
686 of COVID-19-related mortality, 2020–21. *The Lancet*. 2022 Apr 16;399(10334):1513-36.  
687
- 688 31. Cohen C, Kleynhans J, von Gottberg A, McMorro ML, Wolter N, Bhiman JN, Moyes J, du Plessis M,  
689 Carrim M, Buys A, Martinson NA. SARS-CoV-2 incidence, transmission, and reinfection in a rural and an  
690 urban setting: results of the PHIRST-C cohort study, South Africa, 2020–21. *The Lancet Infectious*  
691 *Diseases*. 2022 Mar 14.  
692
- 693 32. Botti-Lodovico, Y. et al. The Origins and Future of Sentinel: An Early-Warning System for Pandemic  
694 Preemption and Response. *Viruses* **13**, 8, 1605 (2021).
- 695 33. Siddle, K. J. et al. Genomic Analysis of Lassa Virus during an Increase in Cases in Nigeria in  
696 2018. *The New England Journal of Medicine* **379**, 18, 1745–1753 (2018).
- 697 34. Ajogbasile, F. V. et al. Real-time metagenomic analysis of undiagnosed fever cases unveils a  
698 yellow fever outbreak in Edo State, Nigeria. *Scientific Reports* **10**, 1, 1-6 (2020).
- 699 35. Oluniyi, P. First African SARS-CoV-2 genome sequence from Nigerian COVID-19 case.  
700 *Virological* [https://virological.org/t/first-african-sars-cov-2-genome-sequence-from-nigerian-covid-19-](https://virological.org/t/first-african-sars-cov-2-genome-sequence-from-nigerian-covid-19-case/421)  
701 [case/421](https://virological.org/t/first-african-sars-cov-2-genome-sequence-from-nigerian-covid-19-case/421) (2020).  
702
- 703 36. Rambaut, A. et al. A dynamic nomenclature proposal for SARS-CoV-2 lineages to assist genomic  
704 epidemiology. *Nat Microbiol* <https://doi.org/10.1038/s41564-020-0770-5> (2020).  
705
- 706 37. Katoh, K., Misawa, K., Kuma, K., & Miyata, T. MAFFT: a novel method for rapid multiple sequence  
707 alignment based on fast Fourier transform. *Nucleic Acids Research*, **30**, 14, 3059–3066 (2002).  
708
- 709 38. Minh, B.Q., Schmidt, H.A., Chernomor, O., Schrempf, D., Woodhams, M.D., von Haeseler, A. &  
710 Lanfear, R. IQ-TREE 2: New models and efficient methods for phylogenetic inference in the genomic era.  
711 *Mol. Biol. Evol.* **37**, 1530-1534 (2020).

- 712  
713 39. Sagulenko, P., Puller, V. & Neher, R.A. TreeTime: Maximum-likelihood phylodynamic analysis. *Virus*  
714 *Evol.* **4**, 1, vex042 (2018).  
715  
716 40. Hadfield, J., Megill, C., Bell, S. M., Huddleston, J., Potter, B., Callender, C., Sagulenko, P., Bedford,  
717 T. & Neher, R. A. Nextstrain: real-time tracking of pathogen evolution. *Bioinformatics (Oxford, England)*,  
718 **34**, 23, 4121–4123 (2018).  
719  
720 41. Elbe, S. & Buckland-Merrett, G. Data, disease and diplomacy: GISAID's innovative contribution to  
721 global health. *Global Challenges*, **1**, 33-46 (2017).  
722  
723 42. Li, H. Minimap2: pairwise alignment for nucleotide sequences. *Bioinformatics*, **34**, 18, 3094-3100  
724 (2018).  
725  
726 43. Kalyaanamoorthy, S., Minh, B. Q., Wong, T. K., Von Haeseler, A. & Jermini, L. S. ModelFinder: fast  
727 model selection for accurate phylogenetic estimates. *Nature methods*, **14**, 587-589 (2017).  
728  
729 44. Suchard, M. A., Lemey, P., Baele, G., Ayres, D. L., Drummond, A. J. & Rambaut, A. Bayesian  
730 phylogenetic and phylodynamic data integration using BEAST 1.10. *Virus evolution*, **4**, 1, vey016 (2018).  
731  
732 45. Hasegawa, M., Kishino, H. & Yano, T. A. . Dating of the human-ape splitting by a molecular clock of  
733 mitochondrial DNA. *Journal of Molecular Evolution*, **22**, 2, 160-174 (1985).  
734  
735 46. Drummond, A. J., Ho, S. Y. W., Phillips, M. J. & Rambaut, A. Relaxed phylogenetics and dating with  
736 confidence. *PLoS Biology*, **4**, 5, e88 (2006).  
737  
738 47. Drummond, A. J., Rambaut, A., Shapiro, B. E. T. H. & Pybus, O. G. Bayesian coalescent inference of  
739 past population dynamics from molecular sequences. *Molecular Biology and Evolution*, **22**, 5, 1185-1192  
740 (2005).  
741  
742 48. Ayres, D. L. et al. BEAGLE: an application programming interface and high-performance computing  
743 library for statistical phylogenetics. *Systematic Biology*, **61**, 1, 170-173 (2012).  
744  
745 49. Rambaut, A., Drummond, A. J., Xie, D., Baele, G. & Suchard, M. A. Posterior summarization in  
746 Bayesian phylogenetics using Tracer 1.7. *Systematic Biology*, **67**(5), 901 (2018).  
747  
748 50. Lemey, P., Rambaut, A., Drummond, A. J. & Suchard, M. A. Bayesian phylogeography finds its roots.  
749 *PLoS Computational Biology*, **5**, 9, e1000520 (2009).  
750  
751 51. Worobey, M. et al. The emergence of SARS-CoV-2 in Europe and North America. *Science*, **370**,  
752 6516, 564-570 (2020).  
753  
754 52. Lemey, P. et al. Untangling introductions and persistence in COVID-19 resurgence in Europe. *Nature*,  
755 **595**, 7869, 713-717 (2021).  
756  
757 53. Gangavarapu K, Latif AA, Mullen JL, Alkuzweny M, Hufbauer E, Tsueng G, Haag E, Zeller M, Aceves  
758 CM, Zaiets K, Cano M. Outbreak. info genomic reports: scalable and dynamic surveillance of SARS-CoV-  
759 2 variants and mutations. Research square. 2022 Jan 1.  
760  
761