

39 Supplementary Methods

40 **Validation of newly designed respiratory virus probe-based RT-PCR assays.** Primers and probe sequences were
41 screened for specificity *in silico* using NCBI Blast, and then tested *in vitro* against virus panels (NATtrol™
42 Respiratory Verification Panel NATRVP2-BIO or NATRVP2.1-BIO, Zeptomatrix, Buffalo, NY) that include
43 chemically inactivated intact influenza viruses, parainfluenza viruses, adenovirus, rhinovirus, metapneumovirus, and
44 coronaviruses, as well as various additional intact respiratory viruses, synthetic viral genomic RNA, or target cDNA
45 sequences (Table S2). RNA was extracted from intact viruses using Chemagic Viral DNA/RNA 300 Kit H96 for
46 Chemagic 360 (PerkinElmer, Waltham, MA). Nucleic acids were used undiluted as a template in digital droplet RT-
47 PCR singleton assays in a single well. The concentration of nucleic acids used in the *in vitro* specificity testing was
48 approximately 550 copies per reaction.

49
50 Immediately upon receipt at the lab, samples were centrifuged to dewater the solids as described elsewhere¹, and the
51 dewatered solids were stored immediately at -80°C until analysis. The time of storage spanned from 4 to 60 weeks.
52 Samples were removed from the freezer and thawed at 4°C overnight. Then, solids were suspended in DNA/RNA
53 Shield (Zymo Research, Irvine, California, USA) at a concentration of 0.75 mg (wet weight)/ml. This concentration
54 of solids was chosen as it was shown to alleviate inhibition in downstream RT-PCR². An additional aliquot of
55 dewatered solids was dried in an oven¹ to determine its dry weight so that measured concentrations of nucleic acid
56 targets could be normalized to gram dry weight. RNA was extracted from 10 replicate aliquots of dewatered settled
57 solids suspended in the DNA/RNA Shield using the Chemagic Viral DNA/RNA 300 kit H96 for the Perkin Elmer
58 Chemagic 360 (Perkin Elmer, Waltham, MA) followed by PCR inhibitor removal with the Zymo OneStep-96 PCR
59 Inhibitor Removal kit (Zymo Research, Irvine, CA) The pre-analytical methods described here are provided in detail
60 in other publications and on protocols.io¹⁻⁵.

61
62 Nine samples spanning the duration of the time series were selected to measure each HCoV and HPIV, respectively
63 (Table S3). Aliquots of extracted RNA were stored at -80°C for between 1 and 3 months before being thawed to
64 measure concentrations of individual HCoVs and HPIVs.

65
66 Droplets were generated using the AutoDG Automated Droplet Generator (Bio-Rad, Hercules, CA). PCR was
67 performed using Mastercycler Pro (Eppendorf, Enfield, CT) with with the following cycling conditions: reverse
68 transcription at 50°C for 60 minutes, enzyme activation at 95°C for 5 minutes, 40 cycles of denaturation at 95°C for
69 30 seconds and annealing and extension at 59°C for 30 seconds, enzyme deactivation at 98°C for 10 minutes then an
70 indefinite hold at 4°C. The ramp rate for temperature changes were set to 2°C/second and the final hold at 4°C was
71 performed for a minimum of 30 minutes to allow the droplets to stabilize. Droplets were analyzed using the QX200
72 Droplet Reader (Bio-Rad). A well had to have over 10,000 droplets for inclusion in the analysis. All liquid transfers
73 were performed using the Agilent Bravo (Agilent Technologies, Santa Clara, CA).

74
75 The ddRT-PCR methods applied to wastewater solids to measure PMMoV are provided in detail elsewhere¹ and are
76 not repeated here. Here, we provide methods for the multiplexed respiratory virus assays which have not been
77 reported previously. To obtain the total concentration of non-SARS-CoV-2 HCoV: the four HCoV assays were
78 multiplexed with HCoV HKU1 and 229E in the FAM channel, and OC43 and NL63 in the HEX channel. To obtain
79 the total concentration of HPIV the five HPIV assays were multiplexed: HPIV1, HPIV3, and HPIV 4A in the FAM
80 channel, and HPIV 4B and HPIV 2 in the HEX channel. IAV (FAM), IBV (HEX), RSV A (FAM/HEX) were
81 multiplexed using the triplex probe mixing approach. HMPV (FAM), HRV (HEX), and RSV B (FAM/HEX) were
82 multiplexed using the triplex probe mixing approach. Finally, PMMoV (HEX) was measured in singleplex (ref).
83 Using this approach, concentrations of individual genomic targets can be obtained from all assays except those for
84 HCoV and HPIV - for those reactions, all positive droplets were combined to obtain concentrations of all HCoV and
85 HPIV.

86
87 The nine samples chosen to measure each HCoV and HPIV individually were run as follows. 229E (FAM) and
88 NL63 (HEX), and HKU-1 (FAM) and OC43 (HEX) were multiplexed. HPIV2 (FAM/HEX), HPIV3 (HEX), and
89 HPIV 4A (FAM) were multiplexed, and HPIV1 (HEX) and HPIV 4B (FAM) were multiplexed.

90
91 Extracts from each of the 10 replicate nucleic acid extractions from each sample were run as template yielding 10
92 wells per sample. Each 96-well PCR plate of wastewater samples included PCR positive controls for each target
93 assayed on the plate in 1 well, PCR negative no template controls in two wells, and extraction negative controls

94 (consisting of water and lysis buffer) in two wells. PCR positive controls consisted of viral gRNA or gene blocks
95 (Table S2).

96
97 ddRT-PCR was performed on 20 μ l samples from a 22 μ l reaction volume, prepared using 5.5 μ l template, mixed
98 with 5.5 μ l of One-Step RT-ddPCR Advanced Kit for Probes (Bio-Rad 1863021), 2.2 μ l of 200 U/ μ l Reverse
99 Transcriptase, 1.1 μ l of 300 mM dithiothreitol (DDT) and primers and probes mixtures at a final concentration of
100 900 nM and 250 nM respectively. Primer and probes for assays were purchased from Integrated DNA Technologies
101 (IDT, San Diego, CA) (Table 1).

102
103 For the assay specificity testing, the respiratory virus assays were challenged against target and non-target (other
104 respiratory viruses) viral gRNA (Table 1). Each PCR plate contained a negative PCR NTC.

105
106 Thresholding was done using QuantaSoft™ Analysis Pro Software (Bio-Rad, version 1.0.596). In order for a
107 sample to be recorded as positive, it had to have at least 3 positive droplets.

108
109 **Regional monitoring program SARS-CoV-2 N gene and PMMoV gene concentrations.** The wastewater solids
110 samples from RWF used in this study were collected as part of a larger wastewater monitoring program focused on
111 measuring SARS-CoV-2 RNA in daily samples that were not stored prior to analysis. Detailed methods for that
112 program have been published¹ and some of those results from samples included in this study have been published¹⁻⁵.
113 Herein, we include data on SARS-CoV-2 N gene concentrations in a supplementary manner to provide insight into
114 the progress of the COVID-19 pandemic during this study, and data on PMMoV to assess how storage of the
115 samples potentially affected viral RNA quantification.

117 **Supplementary Results**

118
119 **QA/QC for wastewater samples.** Each plate run included negative extraction and RT-PCR controls, and positive
120 extraction and PCR controls. In order for a plate to pass QA/QC, the number of positive droplets across merged
121 negative extraction and PCR well could be no larger than 2 for any plate except the PMMoV plate where we
122 allowed up to 13 positive droplets. The larger number of droplets in negative controls were allowed because
123 PMMoV is a high copy number target with typically 71,000 (median across all samples) positive droplets for the
124 samples; therefore addition of up to 13 positive droplets would change the percent of positive droplets by less than
125 0.02% and have minimal effect on the measured concentration. The number of positive droplets for the positive
126 controls had to be greater than 3 droplets yielding a positive result. All plates passed this threshold. Median PMMoV
127 concentrations across the samples were 1.6×10^9 copies/g similar to measurements previously reported for the plant¹.
128 In addition, levels were stable across all samples (IQR = 0.7×10^9 cp/g) suggesting consistent fecal strength and RNA
129 extraction efficiency. The concentration of PMMoV obtained in this study was compared to the concentration of
130 PMMoV measured in the same samples from fresh wastewater solids from our routine monitoring program. The
131 median ratio of these concentrations was 1.1 (interquartile range IQR = 0.7). This suggests that the storage of the
132 solids in this study at -80°C and their subsequent freeze thaw had limited impact on PMMoV RNA concentrations.
133 We therefore assume that the impact was similarly minimal for the other targets. Results for HCoV for samples
134 collected prior to 2/26/22 (month/day/year) were omitted from the analysis owing to failed positive controls.

136
137 **Summary of Santa Clara County sentinel lab data (county-aggregated sentinel lab data) and its association**
138 **with wastewater measurements.** The wastewater treatment plant serves approximately 75% of the population of
139 Santa Clara County, suggesting that disease incidence data from sentinel laboratories in the county would be a good
140 proxy for disease incidence in the sewershed. However, the county-aggregated surveillance data was sparse,
141 particularly for non-SARS HCoV, for which no clinical specimens were assayed. We therefore opted not to present
142 the results from these analysis in the main paper, but include them herein for completeness.

143
144 Sentinel laboratories in Santa Clara county tested a median of 20 (range 4-935) specimens per MMWR week for
145 influenza (IAV and IAB) and RSV, and a median of 7 (0 - 634) for HPIV, HMPV, and HRV. No clinical specimen
146 was tested for HCoV. Wastewater viral RNA concentrations were positively associated with the positivity rates for
147 the virus in clinical specimens processed by the county sentinel laboratories for IAV, HPIV, and RSV. Kendall's tau
148 between positivity rates and median wastewater concentrations were 0.54 ($p=9 \times 10^{-8}$) for IAV, 0.44 ($p=10^{-6}$) for
149 HPIV, and 0.74 ($p=2 \times 10^{-16}$) for RSV. Clinical specimen testing does not distinguish between RSV A and B, so
150 wastewater RSV B concentration was used as a variable in the test of association as RSV A were mostly non-detect
151 (Table 3). There was no reported positive clinical specimen for IBV and HCoV so we could not perform a test of
152 association. There was not a correlation between HMPV RNA concentrations in wastewater and HMPV case
153 positivity (tau = 0.67, $p = 0.5$) or HRV RNA wastewater concentrations and HRV case positivity (tau = 0.23,
154 $p=0.005$).

Parameter	Values
Primer size	min 15, optimum 20, max 36
Primer melting temperature	min 50°C, optimal 60°C, max 65°C
GC% content:	min 40%, optimal 50%, high 60%
concentration of divalent cations	3.8 mM
concentration of dNTPs	0.8 mM
Internal oligo size	size min 15, optimal 20, max 30
Internal oligo: Melting temp	min 62°C, optimal 63°C, max 70°C
Internal Oligo: GC%	min 30%, optimal 50%, max 80%

Table S1. Parameters used in Primer3Plus (<https://primer3plus.com/>).

Virus(es) (abbreviation used in the paper)	Genomic target	Non-target testing (negatives)	Target testing (positives)
Pan Rhinovirus A/B/C (HRV)	Untranscribed region	NATRV2-BIO	Clinical samples sequenced and classified as HRV A, B and C
Human Parainfluenza (HPIV) 1	Hemagglutinin-neuraminidase (HN) gene	NATRV2-BIO	Intact HPIV 1 virus (ATCC VR-94)
HPIV 2	HN gene	NATRV2-BIO	Intact HPIV 2 virus (ATCC VR-92)
HPIV 3	Fusion protein (F) gene	NATRV2-BIO	Intact HPIV 3 virus (ATCC VR-93)
HPIV 4A	Untranscribed region	NATRV2-BIO	Intact HPIV 4A virus (ATCC VR-1378)
HPIV 4B	HN gene	NATRV2-BIO	Intact HPIA 4B virus (ATCC VR-1377)
Human Coronavirus (HCoV) 229E	Nucleoprotein (N) gene	NATRV2-BIO	Synthetic HCoV 229E gRNA (TWIST 103011)
HCoV NL63	N gene	NATRV2-BIO	Synthetic HCoV NL63 gRNA (TWIST 103012)
HCoV OC43	N gene	NATRV2-BIO	Synthetic HCoV OC43 RNA (TWIST 103013)
HCoV HKU-1	N gene	NATRV2-BIO	IDT gene Block
Human Metapneumovirus (HMPV)	RNA directed RNA polymerase (L) gene	NATRV2.1-BIO	Synthetic HMPV RNA (ATCC VR-3250SD) and intact HMPV virus (Zepto NATRV2-IDI)
Influenza B (IBV)	Membrane (M1) gene	NATRV2.1-BIO	Synthetic IBV gRNA (TWIST 103003) and intact IBV virus (Zepto NATFVP-NNS)
RSV A	N gene	NATRV2.1-BIO	Intact RSV A virus (Zepto NATFVP-NNS)
RSV B	N gene	NATRV2.1-BIO	Intact RSV B virus (Zepto NATFVP-NNS)

Table S2. List of viruses included in this study, and the name of the gene target RT-PCR probe-based assays targeted. The list of non-target and target controls used to test assay specificity are provided. All non-target controls are virus panels sold by Zeptomatrix (“Zepto”, Buffalo, NY). The vendor Twist Biosciences (“Twist”) is located in South San Francisco, CA. ATCC is American Type Culture Collection.

Virus group	Samples chosen for analysis of all members of virus group
HCoV	5/20/21, 6/20/21, 7/8/21, 10/26/21, 11/28/21, 2/15/22, 3/1/22, 4/28/22, 5/10/22
HPIV	6/1/21, 8/1/21, 9/19/21, 11/4/21, 12/28/21, 3/10/22, 4/7/22, 5/5/22, 6/2/22

Table S3. Samples chosen for analysis of different HCoVs and HPIVs. Dates are provided in month/day/year format.

	HMPV	IAV	IBV	HRV	RSV A	RSV B	HPIV	HCoV
IAV	0.23 p<10⁻⁴							
IBV	0.15 p=0.01	0.074 p=0.3						
HRV	0.51 p<10⁻¹⁵	0.18 p=0.0009	0.15 p=0.008					
RSV A	-0.15 p=0.009	0.059 p=0.3	-0.055 p=0.40	-0.06 p=0.30				
RSV B	0.48 p<10⁻¹⁵	0.23 p<10⁻⁴	0.17 p=0.004	0.27 p<10⁻⁷	-0.13 p=0.02			
HPIV	0.61 p<10⁻¹⁵	0.38 p<10⁻¹²	0.12 p=0.04	0.54 p<10⁻¹⁵	-0.13 p=0.02	0.43 p<10⁻¹⁵		
HCoV	-0.10 p=0.04	0.10 p=0.06	0.15 p=0.007	-0.0046 p=0.9	0.054 p=0.33	-0.076 p=0.1	-0.045 p=0.3	
SARS-CoV-2	0.35 p<10⁻¹²	0.33 p<10⁻⁹	0.12 p=0.04	0.24 p<10⁻⁶	-0.15 p=0.006	0.37 p<10⁻¹³	0.47 p<10⁻¹⁵	-0.13 p=0.004

Table S4. Kendall's test of association between smoothed wastewater solids concentrations of viral RNA. Tau and the associated p value are provided. To account for multiple hypothesis testing (50 tests were completed), a p value cut off of 0.001 (based on Bonferroni's correction) was used to identify correlations statistically different from 0.

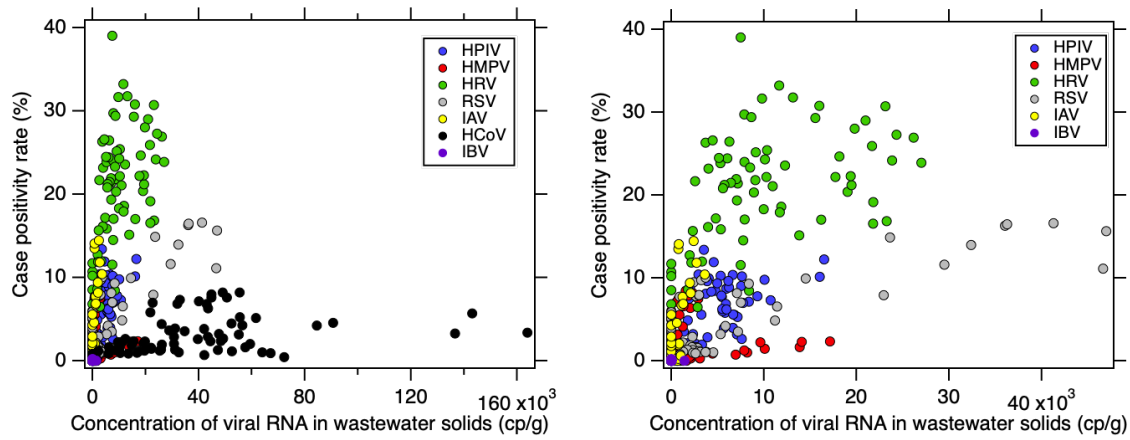


Figure S1. Case positivity from clinical specimens submitted to sentinel laboratories aggregated across the state versus median concentration of viral RNA in wastewater solids for all viral targets for each MMWR week included in the study. RSV B was used to represent RSV in wastewater solids. Left panel is all viruses, right panel excludes seasonal HCoV data to allow visualization of other data more easily.

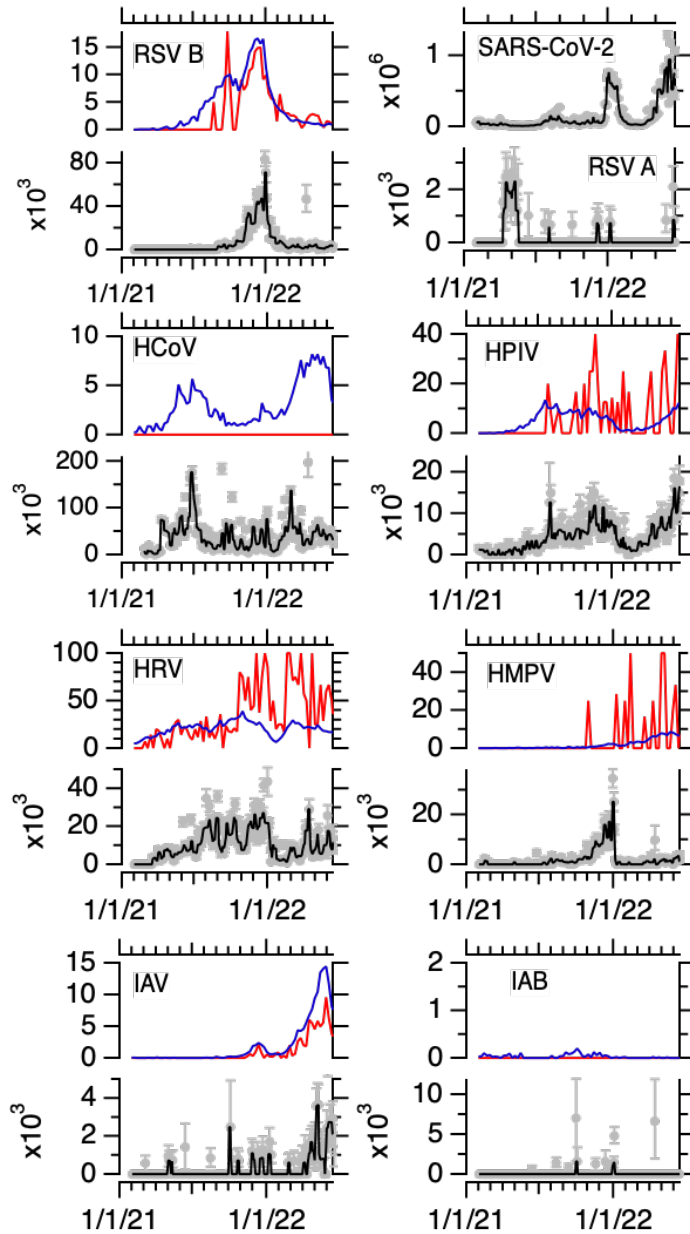


Figure S2. State-aggregated (blue) and county-aggregated (red) positivity rate reported as a percent from sentinel laboratories (top panel) and viral RNA in wastewater solids for each virus reported in copies per gram dry weight (bottom panel), exception is the top right panel which shows RSV A and SARS-CoV-2. RSV is respiratory syncytial virus, HCoV is the sum of all four non-SARS human coronaviruses (OC43, HKU-1, 229E, and NL63), HPIV is human parainfluenza viruses (1-4), HRV is human rhinovirus A, B and C, HMPV is human metapneumovirus, and IAV and IBV are influenza A and B viruses, respectively. SARS-CoV-2 is shown for context. Gray symbols represent measurements, error bars are 68% confidence intervals representing the total error around 10 replicates. The black line is the 3-point rolling median of the measurements. For HCoV there are three measurements located off scale (1.1×10^6 , 3.6×10^5 , and 5.1×10^5 cp/g on 4/9/21, 6/24/21, and 3/3/22, respectively). For HPIV there is one measurement located off scale (3.6×10^4 cp/g on 4/9/21). For HRV there is one measurement located off scale (3.6×10^5 cp/g on 4/14/22). For IAV there are 3 measurements located off scale (2.1×10^4 , 7.5×10^4 , 5.1×10^5 and 1.5×10^4 cp/g on 9/30/21, 10/31/21, 3/3/22, and 4/14/22, respectively). Dates are in month/day/year format.

References

- 1 Wolfe MK, Topol A, Knudson A, *et al.* High-Frequency, High-Throughput Quantification of SARS-CoV-2 RNA in Wastewater Settled Solids at Eight Publicly Owned Treatment Works in Northern California Shows Strong Association with COVID-19 Incidence. *mSystems* 2021; **0**: e00829-21.
- 2 Huisman JS, Scire J, Caduff L, *et al.* Wastewater-based estimation of the effective reproductive number of SARS-CoV-2. *Environmental Health Perspectives* 2022; **In press**.
- 3 Topol A, Wolfe M, White B, Wigginton K, Boehm A. High Throughput SARS-COV-2, PMMOV, and BCoV quantification in settled solids using digital RT-PCR. *protocols.io* 2021. [dx.doi.org/10.17504/protocols.io.btywnpxe](https://doi.org/10.17504/protocols.io.btywnpxe).
- 4 Topol A, Wolfe M, White B, Wigginton K, Boehm A. High Throughput pre-analytical processing of wastewater settled solids for SARS-CoV-2 RNA analyses. *protocols.io* 2021. [dx.doi.org/10.17504/protocols.io.btyqnpvw](https://doi.org/10.17504/protocols.io.btyqnpvw).
- 5 Topol A, Wolfe M, Wigginton K, White B, Boehm A. High Throughput RNA Extraction and PCR Inhibitor Removal of Settled Solids for Wastewater Surveillance of SARS-CoV-2 RNA. *protocols.io* 2021. [dx.doi.org/10.17504/protocols.io.btyrnpv6](https://doi.org/10.17504/protocols.io.btyrnpv6).