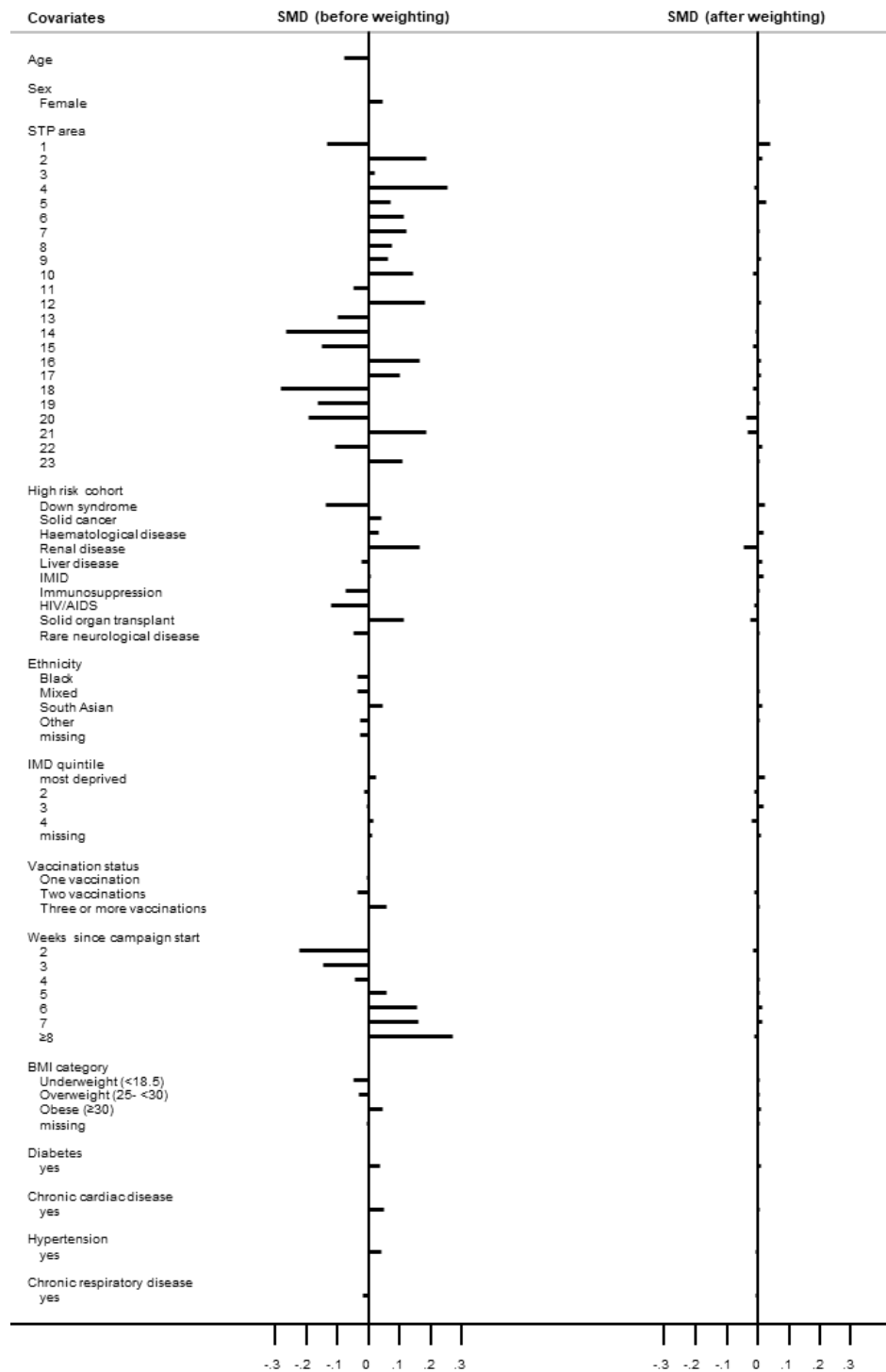


## Supplementary Materials

**Supplementary Table 1. Detected day case admissions that were not counted as hospitalisation events.**

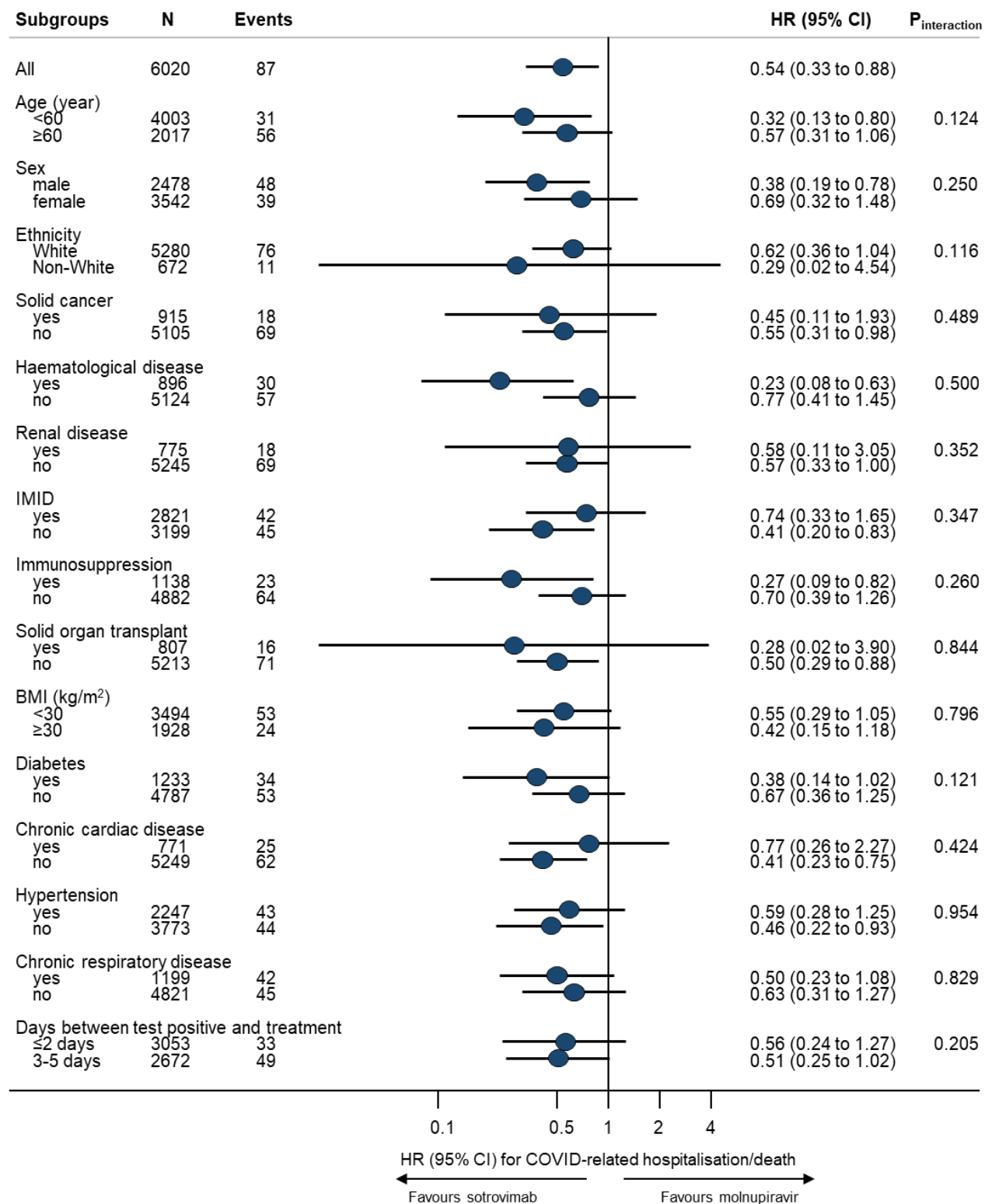
Admissions of which the admission and discharge dates were the same	Number of events	
	Molnupiravir	Sotrovimab
<b>Period 1 (main analysis)</b>		
Detected day cases on Day 0 (i.e., the treatment start date)	46	294
Those with MAb procedure on Day 0	9	267
Detected day cases on Day 1	<5	36
Those with MAb procedure on Day 1	<5	26
Detected day cases on or after Day 2	<5	7
Those with MAb procedure on or after Day 2	<5	6
<b>Period 2 (exploratory analysis)</b>		
Detected day cases on Day 0 (i.e., the treatment start date)	44	317
Those with MAb procedure on Day 0	27	283
Detected day cases on Day 1	<5	39
Those with MAb procedure on Day 1	<5	34
Detected day cases on or after Day 2	6	17
Those with MAb procedure on or after Day 2	<5	13

Note: The following admissions were not counted as hospitalisation events: (1) those recorded as “elective day case admission” or “regular admission” in the patient classification filed of SUS dataset, because such coding clearly indicates that the patient was admitted for a planned procedure or regular treatment (thus cannot represent severe COVID-19 outcomes); or (2) day cases that we additionally detected with the admission and discharge dates being the same. As shown in this table, most of those additionally detected day case admissions were for monoclonal antibody infusion procedure (i.e., admitted for receiving sotrovimab). Monoclonal antibody procedures were identified based on OPCS codes (X891, X892).



**Supplementary Figure 1. Balance check of baseline covariates between treatment groups before and after propensity score weighting (Period 1).**

Note: SMD=standardised mean difference; STP=Sustainability Transformation Partnerships; IMID=Immune-Mediated Inflammatory Diseases; IMD=Index of Multiple Deprivation; BMI=body mass index.



**Supplementary Figure 2. Subgroup analysis of sotrovimab vs. molnupiravir in association with risk of 28-day COVID-19 related hospitalisation/death.**

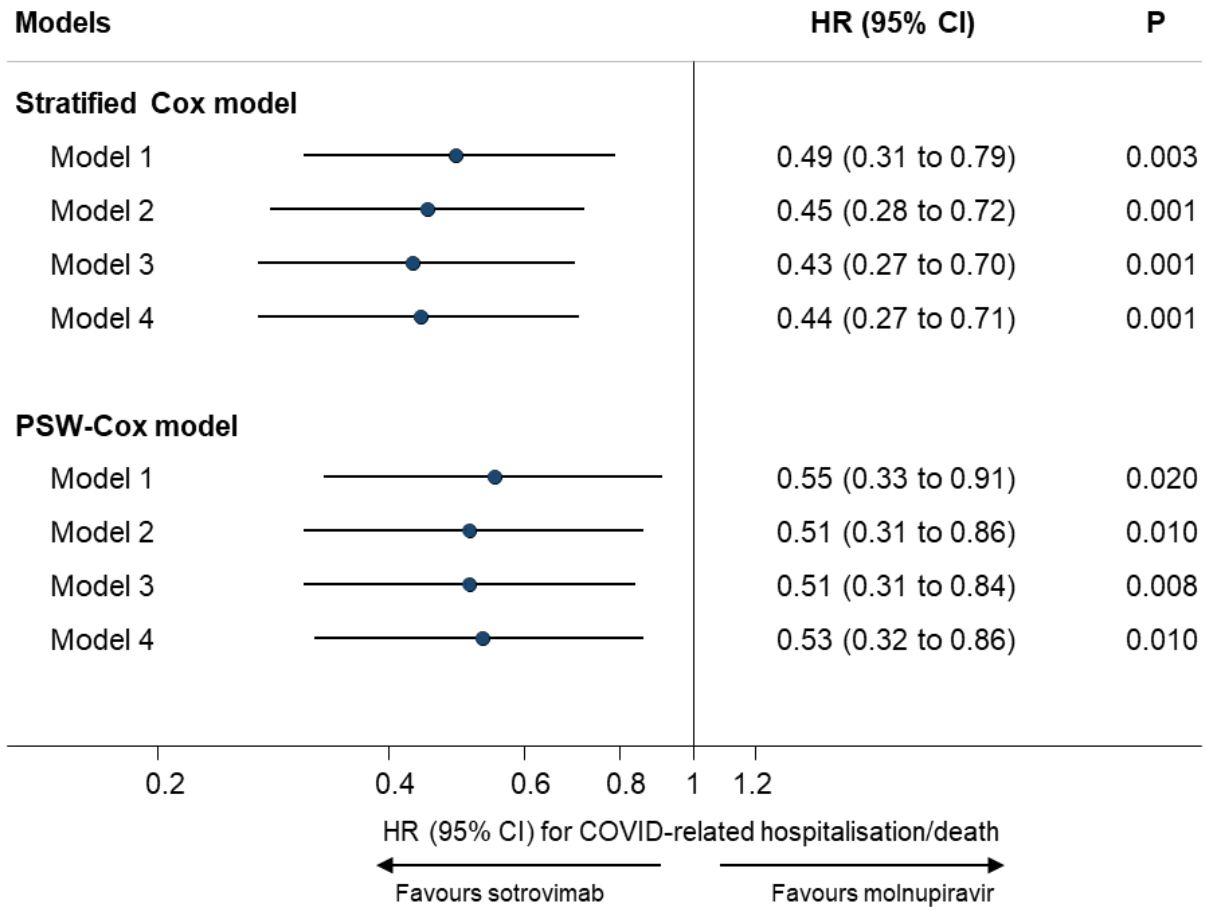
Note: HR=hazard ratio; CI=confidence interval; IMID=Immune-Mediated Inflammatory Diseases; BMI=body mass index. Subgroup analyses were based on the fully-adjusted stratified Cox model (Model 4). P for interaction between drug group and each of the following variables was: Down syndrome (0.221), liver disease (0.953), HIV/AIDS (0.999), rare neurological disease (0.999), vaccination status (0.574), respectively; no analyses within each level of these variables were done because of lack of sample size or outcome events within the subset of population.

**Supplementary Table 2. Baseline characteristics of COVID-19 patients receiving molnupiravir or sotrovimab (Period 2).**

<b>Characteristics</b>	<b>Molnupiravir group</b>	<b>Sotrovimab group</b>	<b>Total</b>
N	1970	5979	7949
Age (year), mean (SD)*	61.4 (16.6)	57.9 (15.6)	58.8 (16.0)
Female, n (%)	1112 (56.5)	3494 (58.4)	4606 (57.9)
White, n (%)	1863 (95.9)	5632 (95.0)	7495 (95.2)
Most deprived, n (%)	213 (11.0)	722 (12.4)	935 (12.0)
Region (NHS), n (%)*			
East	823 (41.8)	1885 (31.5)	2708 (34.1)
London	67 (3.4)	205 (3.4)	272 (3.4)
East Midlands	108 (5.5)	1355 (22.7)	1463 (18.4)
West Midlands	20 (1.0)	252 (4.2)	272 (3.4)
North East	17 (0.9)	240 (4.0)	257 (3.2)
North West	71 (3.6)	553 (9.2)	624 (7.9)
South East	149 (7.6)	360 (6.0)	509 (6.4)
South West	471 (23.9)	819 (13.7)	1290 (16.2)
Yorkshire	244 (12.4)	310 (5.2)	554 (7.0)
High-risk cohorts, n (%)			
Down syndrome*	66 (3.4)	84 (1.4)	150 (1.9)
Solid cancer	378 (19.2)	1071 (17.9)	1449 (18.2)
Haematological disease*	294 (14.9)	1094 (18.3)	1388 (17.5)
Renal disease	276 (14.0)	901 (15.1)	1177 (14.8)
Liver disease	105 (5.3)	323 (5.4)	428 (5.4)
Immune-mediated inflammatory diseases*	940 (47.7)	2673 (44.7)	3613 (45.5)
Immunosuppression	308 (15.6)	948 (15.9)	1256 (15.8)
HIV/AIDS	41 (2.1)	101 (1.7)	142 (1.8)
Solid organ transplant*	216 (11.0)	896 (15.0)	1112 (14.0)
Rare neurological disease	237 (12.0)	742 (12.4)	979 (12.3)
BMI (kg/m <sup>2</sup> ), mean (SD)	28.8 (6.3)	28.9 (6.6)	28.9 (6.5)
Diabetes, n (%)*	498 (25.3)	1359 (22.7)	1857 (23.4)
Chronic cardiac disease, n (%)*	424 (21.5)	1068 (17.9)	1492 (18.8)
Hypertension, n (%)*	1001 (50.8)	2806 (46.9)	3807 (47.9)
Chronic respiratory disease, n (%)	493 (25.0)	1394 (23.3)	1887 (23.7)
Vaccination status, n (%)			

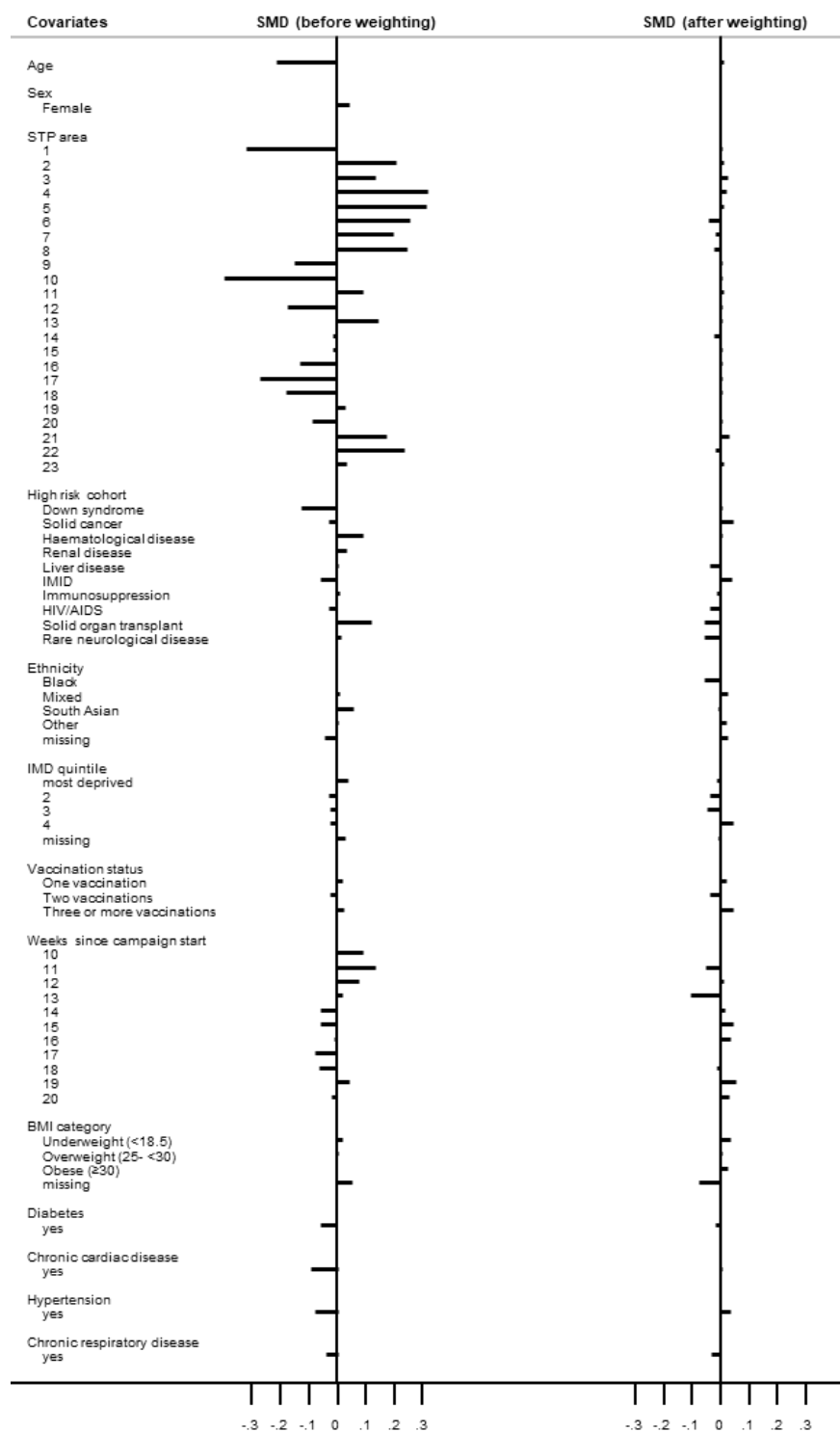
<b>Characteristics</b>	<b>Molnupiravir group</b>	<b>Sotrovimab group</b>	<b>Total</b>
None	27 (1.4)	74 (1.2)	101 (1.3)
One vaccination	15 (0.8)	54 (0.9)	69 (0.9)
Two vaccinations	84 (4.3)	223 (3.7)	307 (3.9)
Three or more vaccinations	1844 (93.6)	5628 (94.1)	7472 (94.0)
Days between test positive and treatment, median (IQR)*	2 (1-3)	2 (1-3)	2 (1-3)
Weeks between campaign start and treatment, median (IQR)*	15 (13-17)	15 (13-17)	15 (13-17)

Note: SD=standard deviation; BMI=body mass index; IQR=interquartile range. Comparisons between groups were conducted using *t*-test, chi-square test or rank-sum test, where appropriate; \* indicates P<0.05. Ethnicity, Index of Multiple Deprivation, BMI and positive test date had 79, 188, 633 and 982 missing values, respectively.



**Supplementary Figure 3. Comparing risk of 28-day COVID-19 related hospitalisation/death between patients treated with sotrovimab vs. molnupiravir (Period 2).**

Note: HR=hazard ratio; CI=confidence interval; PSW=propensity score weighting. Model 1 adjusted for age and sex; Model 2 additionally adjusted for ten high-risk cohort categories; Model 3 further adjusted for ethnicity, IMD quintiles, vaccination status, calendar week; and Model 4 additionally adjusted for BMI category, diabetes, hypertension, chronic cardiac and respiratory diseases.



**Supplementary Figure 4. Balance check of baseline covariates between treatment groups before and after propensity score weighting (Period 2).**

Note: SMD=standardised mean difference; STP=Sustainability Transformation Partnerships; IMID=Immune-Mediated Inflammatory Diseases; IMD=Index of Multiple Deprivation; BMI=body mass index.