

1 **Long-term air pollution, cardiometabolic multimorbidity, and genetic**  
2 **susceptibility: a multi-state modeling study of 415,855 participants**

3  
4 Xu Gao<sup>1#</sup>, Meijie Jiang<sup>1 #</sup>, Ninghao Huang<sup>2</sup>, Xinbiao Guo<sup>1</sup>, Andrea A. Baccarelli<sup>3</sup>, Tao Huang<sup>2</sup>

5  
6 <sup>1</sup>Department of Occupational and Environmental Health Sciences, School of Public Health, Peking  
7 University.

8 <sup>2</sup>Department of Epidemiology and Biostatistics, School of Public Health, Peking University, Beijing,  
9 China

10 <sup>3</sup>Laboratory of Environmental Precision Health, Mailman School of Public Health, Columbia  
11 University, New York, NY, USA

12  
13 #Contributed to the study equally

14  
15 **Corresponding author:** Xu Gao, Ph.D.

16 Department of Occupational and Environmental Health Sciences

17 School of Public Health, Peking University

18 No.38 Xueyuan Road, Haidian District

19 Beijing, China 100191

20 Phone: +86-136-2190-8907

21 Email: [xu.gao@pku.edu.cn](mailto:xu.gao@pku.edu.cn)

22 ORCID: <https://orcid.org/0000-0001-6506-6084>

23  
24  
25  
26  
27  
28  
29  
30  
31  
32  
33  
34  
35  
36  
37  
38  
39  
40  
41  
42  
43  
44

## Abstract

**Background:** Cardiometabolic multimorbidity (CMM) with at least two cardiometabolic diseases (CMDs) including type II diabetes (T2D), ischemic heart disease (IHD), and stroke, is a global health problem with multiplicative mortality risk and deserves to be investigated as a top priority. Although air pollution is a leading modifiable environmental risk for individual CMD, its impacts on CMM progression were poorly understood.

**Objective:** To elucidate the impact of air pollution on CMM progression, individually and in the context of genetic preposition.

**Design:** Multi-state modeling cohort study.

**Setting:** Data were extracted from the UK Biobank.

**Participants:** 415,855 eligible UK Biobank adults that were free of CMDs at baseline.

**Measurements:** Annual concentrations of particulate matter (PM) with a diameter of  $\leq 2.5$   $\mu\text{m}$  ( $\text{PM}_{2.5}$ ), 2.5-10  $\mu\text{m}$  ( $\text{PM}_{2.5-10}$ ), and  $\leq 10$   $\mu\text{m}$  ( $\text{PM}_{10}$ ), and nitrogen oxides ( $\text{NO}_x$  and  $\text{NO}_2$ ) were estimated using Land Use Regression model.

**Results:** During a median follow-up of 8.93 years, 33,375 participants had a first CMD (FCMD), and 3,257 subsequently developed CMM.  $\text{PM}_{2.5}$ ,  $\text{PM}_{10}$ ,  $\text{NO}_2$ , and  $\text{NO}_x$  levels, as well as their combined exposure were associated with increased FCMD risks and even higher risks of CMM. Particularly, per a 5- $\mu\text{g}/\text{m}^3$  increase in  $\text{PM}_{2.5}$ , risks for FCMD and CMM increased by 27% (95% confidence interval: 20%-34%) and 41% (18%-68%), respectively. By FCMD types, participants with IHD had a higher risk of CMM than those with T2D or stroke. Eighty-five CMD-related genetic variants were associated with CMM trajectories in our study and associations of air pollution with FCMD and CMM risks could be aggravated progressively with increasing genetic risks.

45 **Limitations:** Other major air pollutants including ozone and SO<sub>2</sub> were not considered due to the data  
46 availability.

47 **Conclusions:** Air pollution has profound adverse health impacts on the progression of CMM through  
48 multi-stage dynamics, especially for individuals with IHD and high genetic risk.

49

## Introduction

50 Multimorbidity is defined as the simultaneous presence of two or more chronic diseases and is an  
51 increasing global health problem with impaired quality of life, reduced life expectancy, and elevated  
52 cost of health care resources by a larger scale than any chronic conditions individually (1).  
53 Cardiometabolic multimorbidity (CMM), as one of the most common multimorbidity patterns (2),  
54 refers to the coexistence of two or three most prevalent cardiometabolic diseases (CMDs), including  
55 type II diabetes (T2D), ischemic heart disease (IHD), and stroke (2, 3). A study based on 91 cohorts  
56 identified that any combination of these CMDs was associated with multiplicative mortality risk, and  
57 life expectancy was substantially lower in people with CMM with a reduction of life expectancy up  
58 to 15 years (3). CMM, therefore, is not simply an accumulation of the three healthy conditions but  
59 rather a collision of risk factors promoting death. Up to date, there is a dearth of studies on the  
60 determinants of CMM, which is urgently needed to seek appropriate management approaches to  
61 early prevent and control CMM development (4).

62

63 Ambient air pollution, especially fine particulate matter (PM<sub>2.5</sub>, aerodynamic diameter <2.5 μm), has  
64 been recognized as a modifiable risk factor for CMDs (5, 6). For instance, a meta-analysis identified  
65 a robust positive association between PM exposure and the incidence of T2D (7). Petal et al. also  
66 reported that a 10 μg/m<sup>3</sup> increase in PM<sub>2.5</sub> and particulate matter (PM) of sizes 10 μm (PM<sub>10</sub>) was  
67 associated with 0.25% higher IHD mortality and 0.27% higher IHD morbidity (8). Short-term air  
68 pollution exposure could also increase the daily hospital admissions for ischemic stroke (9).  
69 Understanding the impact of air pollution on the dynamics of CMM thereby could hint targeted  
70 population of CMM prevention. Nevertheless, this is not sufficient to depict the risks of CMM

71 coming from air pollution exposure without accounting for the temporal development of CMM using  
72 traditional time-to-event analyses. Additionally, CMDs have been suggested to be affected mutually  
73 by environmental exposures and genetic profiles (10), but knowledge on whether the genetic  
74 predisposition of CMM and air pollution could jointly promote the CMM development remains  
75 unknown.

76

77 Therefore, we aimed to investigate the associations of five pollutants ( $PM_{2.5}$ ,  $PM_{2.5-10}$ ,  $PM_{10}$ ,  $NO_2$ ,  
78 and  $NO_x$ ) with the CMM trajectories using the scheme of multi-state modeling in the UK Biobank.  
79 The multi-state model could evaluate the risk of five transient states (baseline CMD-free to first  
80 CMD [FCMD], baseline to death, FCMD to CMM, FCMD to death, and CMM to death) on  
81 occupying another state (11). Leveraging in-depth genetic information, this study additionally  
82 allowed us to explore the potential synergetic effect of genetic profile and air pollution on CMM.

83  
84  
85  
86  
87  
88  
89  
90  
91  
92  
93  
94  
95  
96  
97  
98  
99  
100  
101  
102  
103  
104

## Methods

### *Study design and participants*

UK Biobank is a large population-based prospective cohort study (12). As previously described, about 0.5 million UK residents aged 37-73 years were enrolled from 2006-2010, and the end date of follow-up was 31 December 2018. Their information collected includes lifestyle and health data, physical measurements, and biological samples. After excluding participants without information on air pollution, CMDs, and selected covariates, and those with T2D, IHD, and stroke at baseline, a total of 415,855 participants without diagnosis of the three CMDs were included in our study for further analyses to exclude the impact of baseline CMD on the association between air pollution and CMM trajectories (Figure S1). The UK Biobank was approved by the North West Multicenter Research Ethical Committee. All participants provided informed written consent. This research has been conducted using the UK Biobank Resource under Application Number 44430.

### *Cardiometabolic diseases and mortality*

Incident IHD, stroke, and T2D cases, as well as relevant mortality, were retrieved from primary care and hospital admission data using the UK National Health Services register. We used the International Classification of Diseases 10th revision (ICD-10) and primary care health records to identify relevant diagnoses. IHD was defined by codes I20 to I25. Stroke was defined by codes I60 to I69. T2D was diagnosed based on the following criteria: having fasting glucose  $\geq 7.0$  mmol/L or 2-hour plasma glucose  $\geq 11.1$  mmol/L, having physician-diagnosed diabetes, using diabetes medication, or with ICD-10 code E11.

105 *Exposure assessments*

106 Annual 1-year moving average ambient concentrations of PM<sub>2.5</sub>, PM<sub>2.5-10</sub>, PM<sub>10</sub>, NO<sub>2</sub>, and NO<sub>x</sub> were  
107 calculated with a Land Use Regression (LUR) model. Details about the LUR model are in the  
108 supplement methods. Previous reports using leave-one-out cross-validation demonstrated good  
109 model performance for PM<sub>2.5</sub>, PM<sub>10</sub>, NO<sub>2</sub> and NO<sub>x</sub> (R<sup>2</sup> of cross-validation =77%, 88%, 87% and  
110 88%, respectively) and a moderate performance for PM<sub>coarse</sub> (cross-validation R<sup>2</sup>=57%).

111 Concentrations of PM<sub>2.5</sub>, PM<sub>2.5-10</sub>, and NO<sub>x</sub> were available in 2010 only, while concentrations of  
112 PM<sub>10</sub> (2007 and 2010) and NO<sub>2</sub> (2005, 2006, 2007, and 2010) were collected for multiple years.  
113 Since the baseline enrollment was conducted from 2006 to 2010, to better fit the time frame of  
114 baseline survey, we used averaged levels of PM<sub>10</sub> and NO<sub>2</sub> in this study.

115

116 To explore the combined impact of air pollutants, we weighted the levels of PM<sub>2.5</sub>, PM<sub>10</sub>, NO<sub>x</sub>, and  
117 NO<sub>2</sub> using the  $\beta$  coefficients retrieved from the transition process from baseline to FCMD based on  
118 Cox regression models adjusting for all covariates described below. PM<sub>2.5-10</sub> was removed due to its  
119 null associations with CMDs (see the Result section for details). This approach was validated in a  
120 10-fold cross-validation analysis in a previous air pollution-related study based on UK Biobank (13,  
121 14). Weighted indicator (termed as “co-exposure score”) was estimated as: co-exposure score =  
122  $(\beta_{[PM_{2.5}]} \times PM_{2.5} + \beta_{[PM_{10}]} \times PM_{10} + \beta_{[NO_2]} \times NO_2 + \beta_{[NO_x]} \times NO_x) \times (4/\text{sum of the } \beta \text{ coefficients})$ .

123 The co-exposure score ranged from 36.50 to 141.78. Participants were divided into five groups based  
124 on the quintiles.

125

126 *Genetic information and genetic risk scores*

127 Detailed information about genotyping, imputation, and quality control in UK Biobank has been  
128 described previously (15) and provide in supplement methods. Based on previous genome-wide  
129 association studies (GWASs) (16-18), we retrieved 74 single-nucleotide polymorphisms (SNPs) for  
130 T2D, 55 for IHD, and 32 for stroke (Table S1). We first coded each SNP as 0 and 1 according to the  
131 existence of risk alleles to test their independent associations with CMM using MSM and then  
132 selected 85 SNPs that were nominal significantly related to any processes of CMM development (see  
133 the Result section for details) to create a weighted genetic risk score (GRS). Each selected SNP was  
134 then recoded as 0, 1, or 2 according to the number of risk alleles, and multiplied by the logarithmic  
135 odds ratios (ORs) obtained from the previous GWAS to calculate the GRS as previously described  
136 (19). The GRS ranged from 57.4 to 117.9, with a higher score indicating a higher genetic risk of  
137 CMM.

138

### 139 *Covariates*

140 As previously reported (20), the following potential covariates were retrieved from the baseline  
141 questionnaires and physical examinations, including age, sex (male/female), body mass index (BMI),  
142 years of education (<10 years/  $\geq$ 10 years), race (based on UK Biobank question “self-reported ethnic  
143 group”, categorized into White, Black, Asian, and other; other included those reported “white and  
144 black mixed” and “other ethnic group” to the question), smoking status (never, former, current),  
145 employment status (employed/unemployed), total household income ( $\geq$ £31000/ <£31000), moderate  
146 alcohol intake status (yes/no), and high-level physical activity status (yes/no). Detailed measures of  
147 the covariates were described in supplement methods.

148



149 *Statistical analysis*

150 Survival time for each participant was calculated as the duration from the response date of baseline  
151 to the date of incident, death, or date of censoring, whichever came first. We first used Cox  
152 regression to examine the associations of five pollutants with FCMD, CMM, and death, separately.  
153 Proportional hazard assumptions were not violated based on the Schoenfeld residuals test. Previously  
154 described covariates were adjusted in the models. We then used the unidirectional multi-state model  
155 (MSM) to assess five pollutants in the temporal disease development from free of CMDs to FCMD,  
156 CMM, and death. The MSM was carried out with Markov proportional hazards (21, 22), which is an  
157 extension of competing risks survival analysis allowing estimation of the role of a certain factor in  
158 different phases of a process. If a participant was recorded with at least two events (CMDs and/or  
159 death) at the same time point simultaneously, we theoretically assumed that the order of disease  
160 occurrence was T2D, IHD, and stroke according to previous evidence (3, 23, 24), and died  
161 eventually. Times for the previous disease were accordingly minus 0.5 days.

162

163 First, five transition processes were constructed according to the natural history of CMM and  
164 previous studies (24, 25) (transition pattern A, Figure 1): (I) from baseline to FCMD; (II) from  
165 baseline to death from a disease other than T2D, IHD, and stroke; (III) from FCMD to CMM; (IV)  
166 from FCMD to death from any causes; and (V) from CMM to death from any causes. Processes I,  
167 III, and V were the primary ones with the most interest of study in our analysis. Then, to explore  
168 which CMD was associated with higher risks of CMM, we further used the MSMs to analyze the  
169 effects of air pollutants on different pathways from baseline to CMM by dividing the FCMDs into  
170 T2D, IHD, and stroke separately. Thus, along with processes II and V of pattern A, the processes I,

171 III, and IV of pattern A were further divided into nine sub-transitions (Ia-Ic; IIIa-IIIc, IVa-IVc) in  
172 pattern B (transition pattern B, Figure 1). Restricted cubic spline regression models were then used to  
173 evaluate the dose–response relationship between air pollutants and each CMM processes with 3  
174 knots (10<sup>th</sup>, 50<sup>th</sup>, and 90<sup>th</sup> percentiles of exposures).

175

176 To clarify the effects of genetic susceptibility and air pollution on CMM, we tested the gene–air  
177 pollution interaction first using the MSM with an interaction term of the continuous co-exposure  
178 score and CMM-related SNPs and continuous GRS to examine the potential modifying effect of  
179 genetic background. In the case that interaction effect did not meet criteria for statistical significance  
180 (p-values<0.05), we generated a series of categorical variable based on the quintiles of co-exposure  
181 score and binary GRS (by median) to assess their joint effects on CMM development.

182

183 Six sensitivity analyses were conducted to validate the robustness of our findings. First, we  
184 constructed another weighted co-exposure score based on PM<sub>2.5</sub>, NO<sub>2</sub>, and NO<sub>x</sub> to understand  
185 whether the marginal association of PM<sub>10</sub> with CMM may distort the findings towards null. Then we  
186 conducted the MSM of pattern A by adjusting for baseline diet behavior, and levels of low-density  
187 lipoprotein, high-density lipoprotein, triglycerides, total cholesterol, systolic blood pressure, and  
188 diastolic blood pressure, all of which were established to be related to CMD and their subsequent  
189 outcomes (26). Furthermore, we conducted the MSM of pattern A by adjusting for ten genetic  
190 principal components of UK Biobank and also in the white participants only to ensure the reliability  
191 of our findings across different ethnicities. To understand the impact of mobilization on our findings,  
192 we additionally conducted the MSM of pattern A in participants who self-reported that he/she had

193 been living at the same baseline address for more than five years. Last, we evaluated whether the age  
194 at FCMD onset (<65 years or  $\geq 65$  years) could modify the association between air pollution and  
195 subsequent CMM.

196  
197 All analyses were conducted using R (version 4.0.1). MSM was performed using “mstate” package  
198 of R. A two-tailed  $p$ -value <0.05 indicated statistical significance.

199

## Results

### 200 *Descriptive analysis*

201 Detailed characteristics of the eligible 415,855 participants are shown in Table S2. The mean  $\pm$   
202 standard deviation (SD) age at baseline was 56.23 $\pm$ 8.09 years. Most participants (94.83%) were  
203 white. Nearly half of the participants were former or never smokers with moderate alcohol intake,  
204 and had a total household income  $\geq$ £31,000. During a median follow-up of 8.93 years, a total of  
205 33,375 participants (8.03%) experienced FCMD. Among them, about half experienced IHD  
206 (N=16,385), 13,533 experienced T2D, and 3,007 experienced strokes (Figure 1). The mean (SD)  
207 ambient levels of PM<sub>2.5</sub>, PM<sub>2.5-10</sub>, PM<sub>10</sub>, NO<sub>2</sub>, and NO<sub>x</sub> were 9.97 (1.05), 6.42 (0.90), 19.28 (1.95),  
208 29.08 (9.21), and 43.74 (15.56)  $\mu\text{g}/\text{m}^3$ , respectively. The pollutants were mutually correlated with  
209 each other (Figure S2, *p*-values <0.001).

210

### 211 *Associations between air pollution and cardiometabolic multimorbidity*

212 Patten A was our primary model of CMM development (Figure 1). Fully-adjusted Cox models  
213 showed that PM<sub>2.5</sub>, PM<sub>10</sub>, NO<sub>2</sub>, and NO<sub>x</sub> were associated with the risks of FCMD, CMM, and death,  
214 respectively (Table S3). The MSM was therefore useful to uncover the underlying risks of CMM  
215 development. Figure 2 depicted that PM<sub>2.5</sub>, NO<sub>2</sub>, and NO<sub>x</sub> were significantly associated with all  
216 CMM processes except for CMM-death. PM<sub>10</sub> was marginally related to baseline-FCMD and  
217 subsequently to CMM. The risk estimates of the four air pollutants were much higher for FCMD-  
218 CMM or FCMD-death than for baseline-FCMD. For instance, per 5- $\mu\text{g}/\text{m}^3$  increment, PM<sub>2.5</sub> was  
219 associated with 27% higher risk of the whole population to develop FCMD from baseline (95%  
220 confidence intervals [CIs]: 20%-34%), 41% higher risk of individuals with FCMD to progress from

221 FCMD to CMM (95% CI: 18%-68%), and 35% higher risk of individuals with FCMD to progress  
222 from FCMD to death (95% CI: 11%-63%). Same increases in NO<sub>x</sub> and NO<sub>2</sub> demonstrated similar  
223 significant magnitudes but with reduced estimates. PM<sub>2.5-10</sub> had null associations with all CMM  
224 processes. Monotonic increasing dose-response relationships were observed for the associations of  
225 PM<sub>2.5</sub>, NO<sub>x</sub>, and NO<sub>2</sub> with the processes of baseline-FCMD, FCMD-CMM, and FCMD-death  
226 (Figures 3 & S3).

227  
228 Strong associations between the co-exposure score based on PM<sub>2.5</sub>, PM<sub>10</sub>, NO<sub>x</sub>, and NO<sub>2</sub> and the  
229 CMM processes were also observed, except for CMM-death (Figures 2 & S3-S4). Compared to the  
230 1<sup>st</sup> quintile of the co-exposure score, the 5<sup>th</sup> quintile was associated with 14% (95% CI: 10%-18%),  
231 22% (95% CI: 7%-38%), and 22% (95% CI: 7%-40%) higher risks for processes of baseline-FCMD,  
232 FCMD-CMM, and FCMD-death, respectively. A sensitivity analysis using the modified co-exposure  
233 score based on PM<sub>2.5</sub>, NO<sub>2</sub>, and NO<sub>x</sub> also yielded similar estimates (Table S4).

234  
235 In transition pattern B which classified FCMDs into three CMDs (Figure 1), we found baseline  
236 participants were more likely to initially develop T2D than IHD or stroke (Tables S5 & S6).  
237 However, FCMD participants with IHD were more likely to develop CMM than those with T2D or  
238 stroke in response to PM<sub>2.5</sub>, NO<sub>2</sub>, NO<sub>x</sub>, and the co-exposure score (Table 1). For instance, per a 5-  
239 µg/m<sup>3</sup> increase in PM<sub>2.5</sub>, the corresponding hazard ratios (HRs) of CMM were 1.51 (95% CI: 1.08-  
240 2.10), 1.05 (95% CI: 1.01-1.10), and 1.01 (95% CI: 0.88-1.15) for FCMD participants with IHD,  
241 T2D, and stroke, respectively.

242

243 *Genetic susceptibility of cardiometabolic multimorbidity and joint effects with air pollution*

244 For the retrieved CMD-related SNPs, 38 T2D-related, 32 IHD-related, and 15 stroke-related loci  
245 were nominally associated with any CMM trajectories of pattern A (Tables S1 & S7 a-c, nominal  $p$ -  
246 values  $<0.05$ ). Genes *ABO*, *EDNRA*, *FURIN*, *MIA3*, and *CDKN2B-AS1* had  $\geq 2$  unique SNPs, and  
247 *CDKN2B-AS1* had the most including rs3217992, rs4977574, and rs7859727. The weighted GRS  
248 based on these CMM-related loci was robustly associated with CMM transitions (Table S7).  
249 However, none of the SNPs or the continuous GRS could interact with the co-exposure score in  
250 relation to CMM trajectories (Table S6 d-f, interaction FDR-corrected  $p > 0.05$ ; Table S9, interaction  
251  $p$ -values  $> 0.1$ ). And in the mutual adjustment model, the coefficients of GRS and the co-exposure  
252 score remained essentially unchanged compared to models with either factor (Table S9). We  
253 suggested that the environmental and genetic factors were independently associated with CMM  
254 development.

255

256 Given no interaction was observed, we generated a series of categorical variable based on the  
257 quintiles of co-exposure score and dichotomized GRS (by median) to test the joint effects of both  
258 factors. We observed gradients in associations of higher GRS and co-exposure score for the  
259 processes of baseline-FCMD and FCMD-CMM (Figure 4). For instance, FCMD participants with the  
260 5<sup>th</sup> quintile co-exposure score and a high GRS had a higher risk of CMM compared to those with the  
261 1<sup>st</sup> quintile of co-exposure score and a low GRS with a HR of 1.40 (95% CI: 1.16-1.70) (Table S19).  
262 But no significant joint effects on baseline-death, FCMD-death, or CMM-death was found.

263

264 *Sensitivity analyses*

265 In the model which further adjusted for baseline diet behavior, lipoprotein levels, and blood pressure,  
266 (Table S11), the estimates of PM<sub>2.5</sub>, NO<sub>2</sub>, NO<sub>x</sub>, and the co-exposure score remained essentially  
267 unchanged in relation to the risks of CMM development. Results from models with additional  
268 adjustment with genetic principal components (Table S12) and from models conducted in white  
269 participants only (Table S13) also showed similar risks, both of which suggested the robustness of  
270 our findings across the ethnicities. Similar estimates were also yielded in participants living in the  
271 address for more than five years (Tables S14), suggesting that our primary results were fairly robust  
272 regardless of the mobilization. Moreover, although the interactions between the age of FCMD onset  
273 (<65 years or ≥65 years) and air pollution on the CMM risks were not significant (Table S15,  
274 interaction *p*-values >0.2), air pollution–CMM associations were stronger among the elderly aged  
275 <65 years than those aged ≥65 years.

276

## Discussion

277 Utilizing the prospective data of ~0.42 million participants of the UK Biobank, we uniquely found  
278 that PM<sub>2.5</sub>, NO<sub>2</sub>, and NO<sub>x</sub> levels were associated with the CMM individually and jointly as a  
279 weighted co-exposure score in a multi-state nature. For participants with any FCMD, those with IHD  
280 had higher risks of incident CMM and death than those who had T2D or stroke as FCMD. Risks for  
281 developing FCMD and CMM under long-term air pollution could be enhanced by the CMM genetic  
282 susceptibility. Our findings will help broaden the scope of public health recommendations  
283 encompassing patients with CMDs and to better characterize and distinguish individuals with a high  
284 risk of developing CMM under environmental insults.

285

286 To date, there is an evident lack of studies that have specifically investigated the temporal association  
287 between air pollution and CMM through methods that involve a stochastic process covering the  
288 possible stages of multimorbidity rather than simply counting the numbers of non-communicable  
289 diseases without considering disease-disease interactions (27). This study is the first investigation  
290 showing the critical role of air pollution on the dynamics of CMM, which indicates that historical air  
291 pollution exposure, especially to PM<sub>2.5</sub> may have profound and lasting impacts on cardiovascular and  
292 metabolic systems. In consistent with previous studies of individual CMDs (6, 7, 28), our study  
293 yielded robust associations of air pollution, especially PM<sub>2.5</sub>, NO<sub>2</sub>, and NO<sub>x</sub>, with FCMD. Moreover,  
294 we identified a stepwise increasing magnitude of the associations of each air pollutant with the risks  
295 of CMM and death after the occurrence of FCMD. This pattern highlights the value of the secondary  
296 prevention of individuals with FCMD to mitigate the additive risks of subsequent CMDs or death.  
297 Additionally, although not statistically significant, individuals with a younger age at FCMD



298 diagnosis (<65 years) had higher CMM risk than those older. Future studies are warranted to  
299 elucidate whether the age at FCMD onset could be recognized as a potential risk indicator of  
300 subsequent CMM risk for the precision prevention of CMM along with environmental risk factors.  
301  
302 More intriguingly, we found that participants were more likely to develop T2D first from baseline  
303 under air pollution. This may be plausible that increased blood glucose level has been recognized as  
304 a critical pathophysiology mechanism for the risks of IHD and stroke (23). We thus believed that  
305 T2D could occur ahead of the onset of IHD or stroke and could be easily diagnosed in routine health  
306 examinations. Furthermore, previous evidence implied that those with IHD or stroke could have  
307 relatively higher glucose levels or were pre-diabetic because cardiovascular events may impair  
308 fasting glucose (29). Even not yet reached the diagnosis criteria of T2D, we anticipated those with  
309 IHD or stroke to be more likely to develop T2D and CMM. However, in our study, participants with  
310 IHD as FCMD showed higher risks of developing CMM or death than others who first had T2D and  
311 stroke. The attenuated risks related to stroke could be explained by better medical care of stroke  
312 patients than those with IHD because of the sudden onset of stroke and higher mortality than IHD.  
313 Additionally, stroke patients usually receive better and systematic blood pressure and glucose  
314 management over rehabilitation period which may considerably lower their risks of IHD, T2D,  
315 and/or death (30, 31). Therefore, for areas with relatively higher stroke incidence and heavier burden  
316 of air pollution, for instance, in developing countries, CMM prevention for stroke patients may be  
317 more than valuable (32). Additionally, except for the limited death numbers, null associations  
318 between air pollution and the CMM-death process may be explained by better medical care for  
319 CMM patients. A recent study of CMM and mortality in UK general practices have demonstrated

320 that compared with people with individual CMDs, those with multimorbidity could have a higher  
321 likelihood of receiving evidence-based treatment to lower the exceeded risk of coexisting  
322 cardiovascular and metabolic diseases (33).

323

324 Accumulating evidence has suggested the biological pathway of CMD resulting from air pollution  
325 (34), including pro-hypertension, insulin resistance, and endothelial damage resulting from oxidative  
326 stress and/or inflammation, which could further promote CMM (28, 34). Beyond these common  
327 etiological pathways, a recent study showed that the comorbidity of cardiovascular and metabolic  
328 diseases could be explained by overlapping genetic profiles along with protein-protein interactions  
329 (PPIs) as a complex network (35). In line with this, our study found that four out of the five CMM-  
330 related genes (i.e., *ABO*, *EDNRA*, *FURIN*, and *MIA3*) that had  $\geq 2$  unique SNPs were related to  
331 protein-coding and could additionally participate in PPIs of the cardiovascular network. Gene  
332 *CDKN2B-AS1* with the most CMM-related SNPs is not a protein-coding gene, but it produces a long  
333 non-coding RNA that interacts with nearby genes and impairs the interferon- $\gamma$  signaling response to  
334 elevate the susceptibility of CMDs (36). Since this gene has also been related to multiple aging-  
335 related diseases including cancer and glaucoma, as well as abnormalities in blood cell counts (37),  
336 more work is required to uncover its role in the development of multimorbidity. Moreover,  
337 insignificant interaction between air pollution and GRS was observed, but moderate additive effect  
338 of genetic background on the associations of air pollution with the baseline-FCMD and FCMD-  
339 CMM processes were shown. Therefore, we believe that genetic susceptibility could be considered in  
340 CMM prevention in response to air pollution. Such mild clues based on SNPs reported by previous

341 GWAS of CMDs further suggest the identification of novel CMM-related variants is highly  
342 recommended to empower the risk prediction of CMM.

343

344 This study has several strengths including the large sample size and detailed records of CMD with  
345 information on lifestyle and covariates that allowed us to conduct the state-of-art multi-state analysis.  
346 Several limitations should also be noted in the result interpretation. First, we only focused on the  
347 CMM defined with the co-occurrence of three diseases including IHD, stoke, and T2D only because  
348 this multimorbidity pattern is the most observed and studied in previous literature (2, 3). Other  
349 important CMDs such as hyperlipidemia, and nonalcoholic fatty liver disease could be investigated  
350 in future studies. Second, UK Biobank is a volunteer cohort with participants who were likely  
351 healthier than the general population, and we excluded those with pre-existing CMDs. Both may  
352 cause selection bias influencing the effect of air pollution on CMM development towards null as  
353 relatively healthier people usually have lower risks of CMDs. Furthermore, the air pollution data was  
354 mostly a single measurement of the annual average level without any further measures within a  
355 shorter time interval. This prohibited further explorations on the lag or short-term (<1 month)  
356 influences of air pollution. Meanwhile, we did not have the data on other major air pollutants, such  
357 as ozone and sulfur dioxide, which have been associated with CVD and T2D (38, 39) and could be  
358 studied in future multi-state investigations. Additionally, in processing the data to match the multi-  
359 state algorithm, we theoretically ascertained the occurrence orders of events if subjects have two or  
360 more events reported on the same day. This may reduce the power of MSM but very slightly because  
361 the number of cases with such conditions was comparatively tiny (N=1192, ~3.6% of FCMD  
362 participants). Moreover, despite that we created the GRS using a GWAS of CMM based on well-

363 established SNPs that were highly related to any CMD in previous GWASs, its generalizability in  
364 predicting CMM may be required to be further validated. Last, we did not have the drug use  
365 information of the participants during follow-up, which may considerably mitigate the risks of  
366 subsequent adverse cardiometabolic health outcomes. Given the CMD information was mostly  
367 retrieved from linkage to electronic health records, we believe that most CMD participants received  
368 appropriate treatment. Such well-received CMD management may have underestimated the  
369 substantial relevant detrimental impacts of air pollution on CMM development we observed.  
370  
371 Notwithstanding the improved awareness of the public on the harms of air pollution, knowledge is  
372 quite limited about whether the impact of environmental exposure on cardiovascular or metabolic  
373 systems may further lead to relevant comorbidities. In this study, we suggest air pollution could  
374 increase the risk of CMM in almost a decade through multi-stage dynamics, especially for FCMD  
375 participants with IHD and participants with high genetic risk. Our results further elucidate the  
376 importance of CMM prevention after long-term air pollution exposure regardless of the genetic risk,  
377 especially for locations where air quality is poorer than in the UK and the burden of CMDs resulting  
378 from air pollution is thus expected to be heavier. For health professionals, general practitioners, and  
379 stakeholders, more efforts may be warranted to better protect the vulnerable population from  
380 environmental risks of CMM.

381 **Acknowledgments:** We thank Dr. Chen Chen for the language assistance.

382

383 **Funding:** Dr. Xu Gao was supported by grants from the Peking University (BMU2021YJ044) and  
384 China CDC Key Laboratory of Environment and Population Health (2022-CKL-03).

385

386 **Competing financial interests:** The authors have no conflict of interest to disclose.

387

388 **Data availability statement:** Data are available in a public, open access repository. This research  
389 has been conducted using the UK Biobank Resource under Application Number 44430. The UK  
390 Biobank data are available on application to the UK Biobank ([www.ukbiobank.ac.uk/](http://www.ukbiobank.ac.uk/)).

391

## References

- 392 1. Glynn LG. Multimorbidity: another key issue for cardiovascular medicine. *Lancet*.  
393 2009;374(9699):1421-2.
- 394 2. Prados-Torres A, Calderon-Larranaga A, Hanco-Saavedra J, Poblador-Plou B, van den Akker M.  
395 Multimorbidity patterns: a systematic review. *J Clin Epidemiol*. 2014;67(3):254-66.
- 396 3. Emerging Risk Factors C, Di Angelantonio E, Kaptoge S, Wormser D, Willeit P, Butterworth AS, et al.  
397 Association of Cardiometabolic Multimorbidity With Mortality. *JAMA*. 2015;314(1):52-60.
- 398 4. Atun R. Transitioning health systems for multimorbidity. *Lancet*. 2015;386(9995):721-2.
- 399 5. Hamanaka RB, Mutlu GM. Particulate Matter Air Pollution: Effects on the Cardiovascular System.  
400 *Front Endocrinol (Lausanne)*. 2018;9:680.
- 401 6. Brook RD, Rajagopalan S, Pope CA, 3rd, Brook JR, Bhatnagar A, Diez-Roux AV, et al. Particulate  
402 matter air pollution and cardiovascular disease: An update to the scientific statement from the  
403 American Heart Association. *Circulation*. 2010;121(21):2331-78.
- 404 7. Yang BY, Fan S, Thiering E, Seissler J, Nowak D, Dong GH, et al. Ambient air pollution and diabetes:  
405 A systematic review and meta-analysis. *Environ Res*. 2020;180:108817.
- 406 8. Patel V, Kantipudi N, Jones G, Upton A, Kamath MV. Air Pollution and Cardiovascular Disease: A  
407 Review. *Crit Rev Biomed Eng*. 2016;44(5):327-46.
- 408 9. Tian YH, Liu H, Zhao ZL, Xiang X, Li M, Juan J, et al. Association between ambient air pollution and  
409 daily hospital admissions for ischemic stroke: A nationwide time-series analysis. *Plos Medicine*.  
410 2018;15(10).
- 411 10. Ward-Caviness CK. A review of gene-by-air pollution interactions for cardiovascular disease, risk  
412 factors, and biomarkers. *Hum Genet*. 2019;138(6):547-61.

- 413 11. Amorim LD, Cai J. Modelling recurrent events: a tutorial for analysis in epidemiology. *Int J Epidemiol.*  
414 2015;44(1):324-33.
- 415 12. Sudlow C, Gallacher J, Allen N, Beral V, Burton P, Danesh J, et al. UK Biobank: An Open Access  
416 Resource for Identifying the Causes of a Wide Range of Complex Diseases of Middle and Old Age.  
417 *Plos Medicine.* 2015;12(3).
- 418 13. Simon RM, Subramanian J, Li MC, Menezes S. Using cross-validation to evaluate predictive accuracy  
419 of survival risk classifiers based on high-dimensional data. *Brief Bioinform.* 2011;12(3):203-14.
- 420 14. Fan M, Sun D, Zhou T, Heianza Y, Lv J, Li L, et al. Sleep patterns, genetic susceptibility, and incident  
421 cardiovascular disease: a prospective study of 385 292 UK biobank participants. *Eur Heart J.*  
422 2020;41(11):1182-9.
- 423 15. Bycroft C, Freeman C, Petkova D, Band G, Elliott LT, Sharp K, et al. Genome-wide genetic data on  
424 ~500,000 UK Biobank participants. *bioRxiv.* 2017:166298.
- 425 16. Nikpay M, Goel A, Won HH, Hall LM, Willenborg C, Kanoni S, et al. A comprehensive 1,000  
426 Genomes-based genome-wide association meta-analysis of coronary artery disease. *Nat Genet.*  
427 2015;47(10):1121-30.
- 428 17. Kwak SH, Park KS. Recent progress in genetic and epigenetic research on type 2 diabetes. *Exp Mol*  
429 *Med.* 2016;48:e220.
- 430 18. Malik R, Chauhan G, Traylor M, Sargurupremraj M, Okada Y, Mishra A, et al. Multiancestry genome-  
431 wide association study of 520,000 subjects identifies 32 loci associated with stroke and stroke  
432 subtypes. *Nat Genet.* 2018;50(4):524-37.
- 433 19. Wang M, Zhou T, Song Y, Li X, Ma H, Hu Y, et al. Joint exposure to various ambient air pollutants  
434 and incident heart failure: a prospective analysis in UK Biobank. *Eur Heart J.* 2021.

- 435 20. Gao X, Huang N, Guo X, Huang T. Role of sleep quality in the acceleration of biological aging and its  
436 potential for preventive interaction on air pollution insults: Findings from the UK Biobank cohort. *Aging*  
437 *Cell*. 2022:e13610.
- 438 21. Putter H. Tutorial in biostatistics: competing risks and multi-state models. *Statistics in medicine*.  
439 2007;26(11):2389-430.
- 440 22. de Wreede LC. The mstate package for estimation and prediction in non- and semi-parametric multi-  
441 state and competing risks models. *Computer methods and programs in biomedicine*. 2010;99(3):261-  
442 74.
- 443 23. Benn M, Tybjaerg-Hansen A, McCarthy MI, Jensen GB, Grande P, Nordestgaard BG. Nonfasting  
444 glucose, ischemic heart disease, and myocardial infarction: a Mendelian randomization study. *J Am*  
445 *Coll Cardiol*. 2012;59(25):2356-65.
- 446 24. Han Y, Hu Y, Yu C, Guo Y, Pei P, Yang L, et al. Lifestyle, cardiometabolic disease, and multimorbidity  
447 in a prospective Chinese study. *Eur Heart J*. 2021;42(34):3374-84.
- 448 25. Singh-Manoux A, Fayosse A, Sabia S, Tabak A, Shipley M, Dugravot A, et al. Clinical,  
449 socioeconomic, and behavioural factors at age 50 years and risk of cardiometabolic multimorbidity  
450 and mortality: A cohort study. *PLoS Med*. 2018;15(5):e1002571.
- 451 26. Kelsey MD, Nelson AJ, Green JB, Granger CB, Peterson ED, McGuire DK, et al. Guidelines for  
452 Cardiovascular Risk Reduction in Patients With Type 2 Diabetes: JACC Guideline Comparison. *J Am*  
453 *Coll Cardiol*. 2022;79(18):1849-57.
- 454 27. Forman DE, Maurer MS, Boyd C, Brindis R, Salive ME, Horne FM, et al. Multimorbidity in Older Adults  
455 With Cardiovascular Disease. *J Am Coll Cardiol*. 2018;71(19):2149-61.
- 456 28. Rajagopalan S, Al-Kindi SG, Brook RD. Air Pollution and Cardiovascular Disease: JACC State-of-the-



- 457 Art Review. *J Am Coll Cardiol*. 2018;72(17):2054-70.
- 458 29. Mozaffarian D, Marfisi R, Levantesi G, Silletta MG, Tavazzi L, Tognoni G, et al. Incidence of new-  
459 onset diabetes and impaired fasting glucose in patients with recent myocardial infarction and the  
460 effect of clinical and lifestyle risk factors. *Lancet*. 2007;370(9588):667-75.
- 461 30. Langhorne P, Bernhardt J, Kwakkel G. Stroke rehabilitation. *Lancet*. 2011;377(9778):1693-702.
- 462 31. Saxena A, Anderson CS, Wang X, Sato S, Arima H, Chan E, et al. Prognostic Significance of  
463 Hyperglycemia in Acute Intracerebral Hemorrhage: The INTERACT2 Study. *Stroke*. 2016;47(3):682-  
464 8.
- 465 32. Dugravot A, Fayosse A, Dumurgier J, Bouillon K, Rayana TB, Schnitzler A, et al. Social inequalities in  
466 multimorbidity, frailty, disability, and transitions to mortality: a 24-year follow-up of the Whitehall II  
467 cohort study. *Lancet Public Health*. 2020;5(1):e42-e50.
- 468 33. Canoy D, Tran J, Zottoli M, Ramakrishnan R, Hassaine A, Rao S, et al. Association between  
469 cardiometabolic disease multimorbidity and all-cause mortality in 2 million women and men registered  
470 in UK general practices. *BMC Med*. 2021;19(1):258.
- 471 34. Al-Kindi SG, Brook RD, Biswal S, Rajagopalan S. Environmental determinants of cardiovascular  
472 disease: lessons learned from air pollution. *Nat Rev Cardiol*. 2020;17(10):656-72.
- 473 35. Dong G, Feng J, Sun F, Chen J, Zhao XM. A global overview of genetically interpretable  
474 multimorbidities among common diseases in the UK Biobank. *Genome Med*. 2021;13(1):110.
- 475 36. Harismendy O, Notani D, Song X, Rahim NG, Tanasa B, Heintzman N, et al. 9p21 DNA variants  
476 associated with coronary artery disease impair interferon-gamma signalling response. *Nature*.  
477 2011;470(7333):264-8.
- 478 37. Melzer D, Pilling LC, Ferrucci L. The genetics of human ageing. *Nat Rev Genet*. 2020;21(2):88-101.

- 479 38. Chen R, Jiang Y, Hu J, Chen H, Li H, Meng X, et al. Hourly Air Pollutants and Acute Coronary  
480 Syndrome Onset In 1.29 Million Patients. *Circulation*. 2022;0(0).
- 481 39. Zhang S, Mwiberi S, Pickford R, Breitner S, Huth C, Koenig W, et al. Longitudinal associations  
482 between ambient air pollution and insulin sensitivity: results from the KORA cohort study. *Lancet*  
483 *Planet Health*. 2021;5(1):e39-e49.
- 484

485

## Figure Legends

486 **Figure 1** Numbers (percentages) of participants in transition pattern A (solid line) and B (dashed  
487 line) from baseline to first cardiometabolic disease (FCMD), cardiometabolic multimorbidity  
488 (CMM), and death.

489

490 **Figure 2** Associations of five air pollutants and co-exposure score with the risks of first  
491 cardiometabolic disease and cardiometabolic multimorbidity of pattern A using multi-state model  
492 Models adjusted for age, sex, ethnicity, BMI, years of education, smoking status, moderate alcohol  
493 intake, high-level physical activity, total household income, and employment status. Estimates of air  
494 pollutants were demonstrated per 5- $\mu\text{g}/\text{m}^3$  increase and estimates of co-exposure score were  
495 demonstrated per one SD increase. Dots: Point estimate; Error bar: 95% confidence limits;

496

497 **Figure 3** Graphs of the dose-response relationships of five air pollutants and co-exposure score with  
498 the processes from baseline to FCMD and from FCMD to CMM of pattern A  
499 Solid lines: point estimates; Shadows: 95% confidence limits;

500

501 **Figure 4** Joint associations of weighted genetic risk and air pollution levels of five transition  
502 processes on pattern A using multi-state model  
503 0: low GRS & 1<sup>st</sup> quintile of co-exposure score (reference); 1: low GRS & 2<sup>nd</sup> quintile of co-  
504 exposure score; 2: low GRS & 3<sup>rd</sup> quintile of co-exposure score; 3: low GRS & 4<sup>th</sup> quintile of co-  
505 exposure score; 4: low GRS & 5<sup>th</sup> quintile of co-exposure score; 5: high GRS & 1<sup>st</sup> quintile of co-  
506 exposure score; 6: high GRS & 2<sup>nd</sup> quintile of co-exposure score; 7: high GRS & 3<sup>rd</sup> quintile of co-  
507 exposure score; 8: high GRS & 4<sup>th</sup> quintile of co-exposure score; 9: high GRS & 5<sup>th</sup> quintile of co-  
508 exposure score;

509 **Supplementary Materials**

510 **Figure S1** Flowchart of participant selection

511 **Figure S2** Correlation matrix of the ambient levels of five air pollutants

512 **Figure S3** Graphs of the dose-response relationships of five air pollutants and co-exposure score

513 with the trajectories of cardiometabolic multimorbidity of pattern A (a: PM<sub>2.5</sub>; b: PM<sub>2.5-10</sub>; c: PM<sub>10</sub>; d:  
514 NO<sub>2</sub>, e: NO<sub>x</sub>, f: co-exposure score)

515 **Figure S4** Associations of categorical co-exposure score (quintiles) with the trajectories of  
516 cardiometabolic multimorbidity of pattern A using multi-state model

517 Models adjusted for age, sex, ethnicity, BMI, years of education, smoking status, moderate alcohol  
518 intake, high-level physical activity, total household income, and employment status.

519

520

521 **Table S1** Characteristics of genetic variants associated with type II diabetes, ischemic heart disease,  
522 and stroke

523 **Table S2** Baseline characteristics of 415,855 participants by incident disease status during follow-up

524 **Table S3** Associations of five air pollutants with the risks of first cardiometabolic disease,  
525 cardiometabolic multimorbidity, and mortality using Cox model

526 **Table S4** Associations of the co-exposure score based on PM<sub>2.5</sub>, NO<sub>2</sub>, and NO<sub>x</sub> with the trajectories  
527 of cardiometabolic multimorbidity of pattern A using multi-state model

528 **Table S5** Associations of air pollution with the trajectories of cardiometabolic multimorbidity of  
529 pattern B using multi-state model

530 **Table S6** Associations of categorical co-exposure score (quintiles) with the trajectories of  
531 cardiometabolic multimorbidity of pattern B using multi-state model

532 **Table S7** Associations of CMD-related genetic variants with the trajectories of cardiometabolic  
533 multimorbidity of pattern A using multi-state model (a-c) and their interactions with co-exposure  
534 score (d-f)

535 **Table S8** Associations of weighted genetic risk score with the trajectories of cardiometabolic  
536 multimorbidity of pattern A using multi-state model

537 **Table S9** Mutual associations of co-exposure score and genetic risk score with the trajectories of  
538 cardiometabolic multimorbidity of pattern A using multi-state model in model with and without  
539 interaction terms

540 **Table S10** Joint associations of weighted genetic risk score and co-exposure score of five transition  
541 states on pattern A using multi-state model

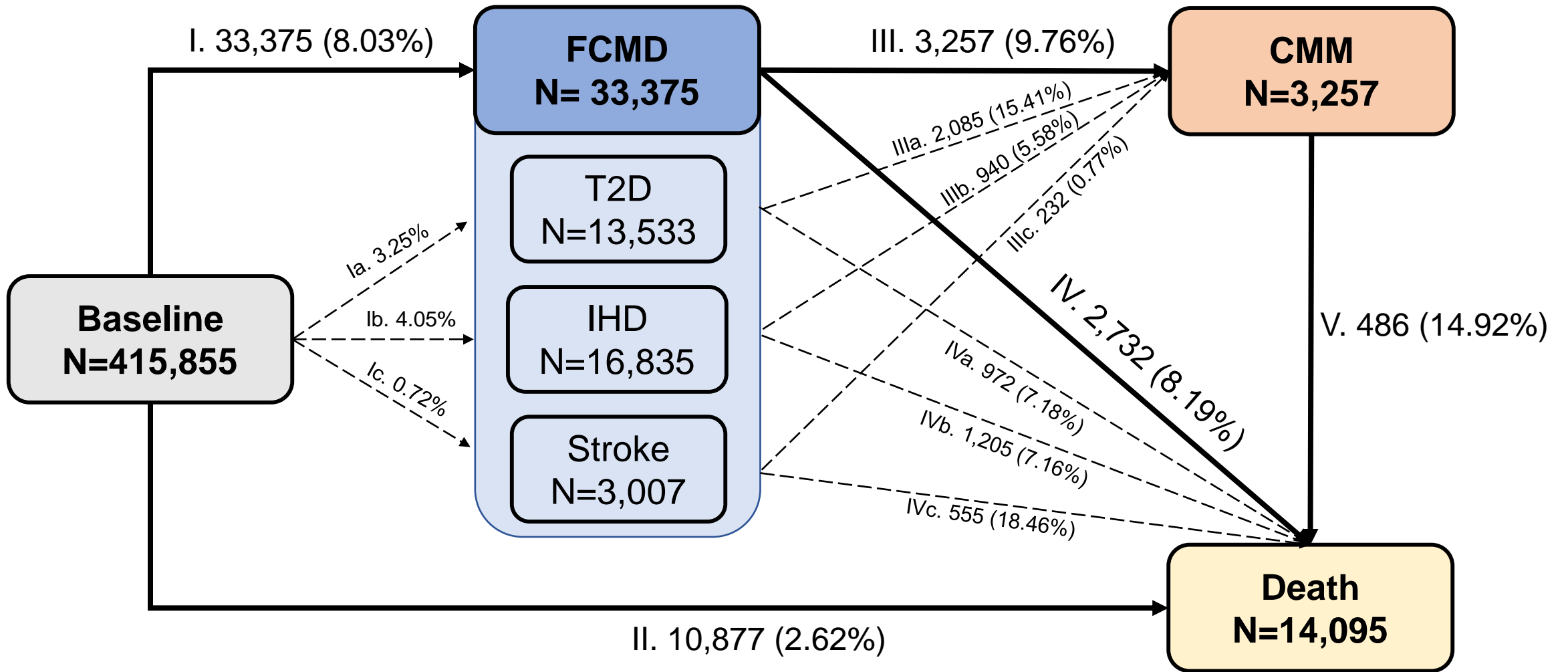
542 **Table S11** Associations of air pollution with the trajectories of cardiometabolic multimorbidity of  
543 pattern A using multi-state model additionally adjusted for baseline diet behaviors, cholesterol levels,  
544 and blood pressure

545 **Table S12** Associations of air pollution with the trajectories of cardiometabolic multimorbidity of  
546 pattern A using multi-state model additionally adjusted for genetic principal components

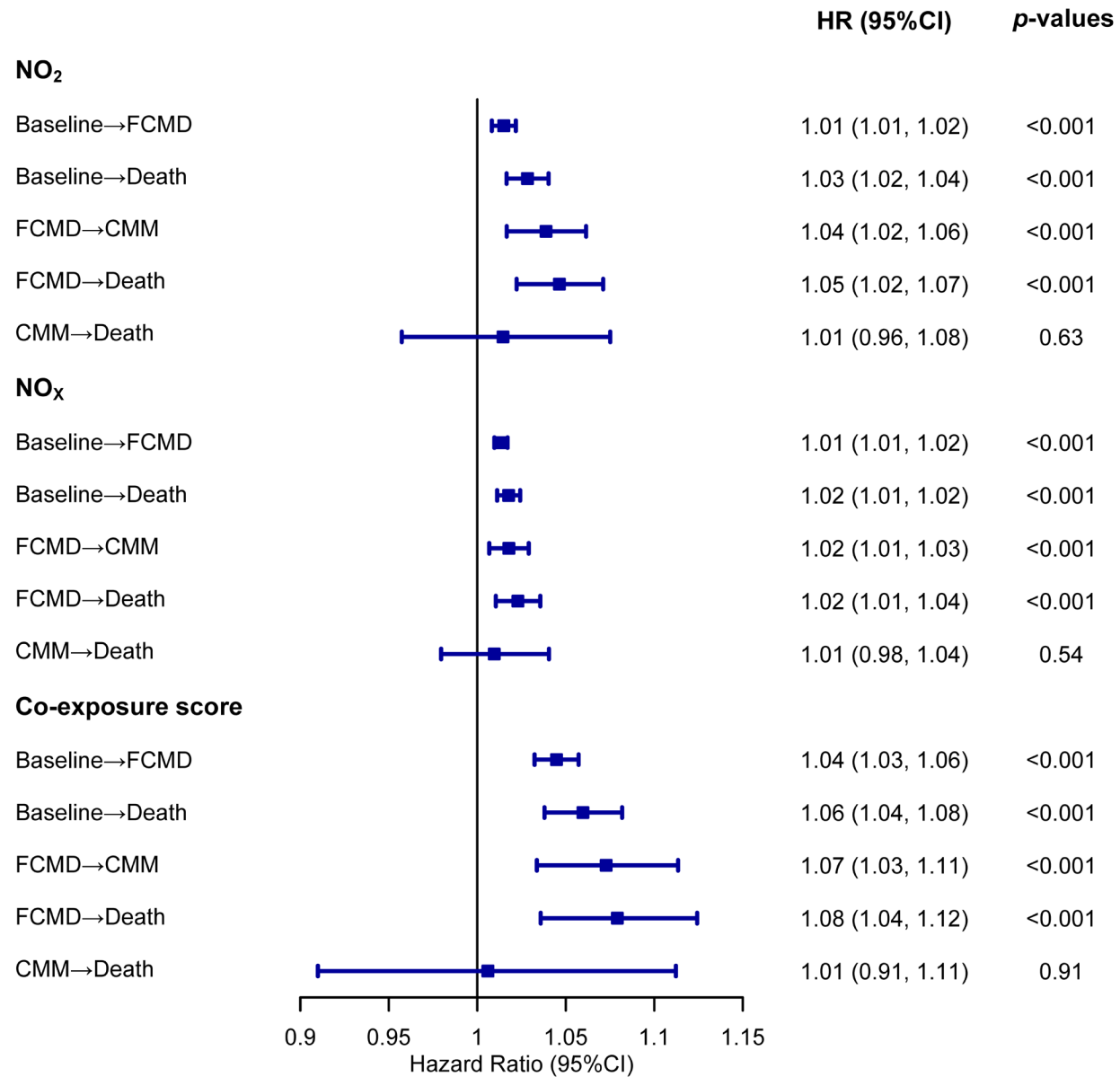
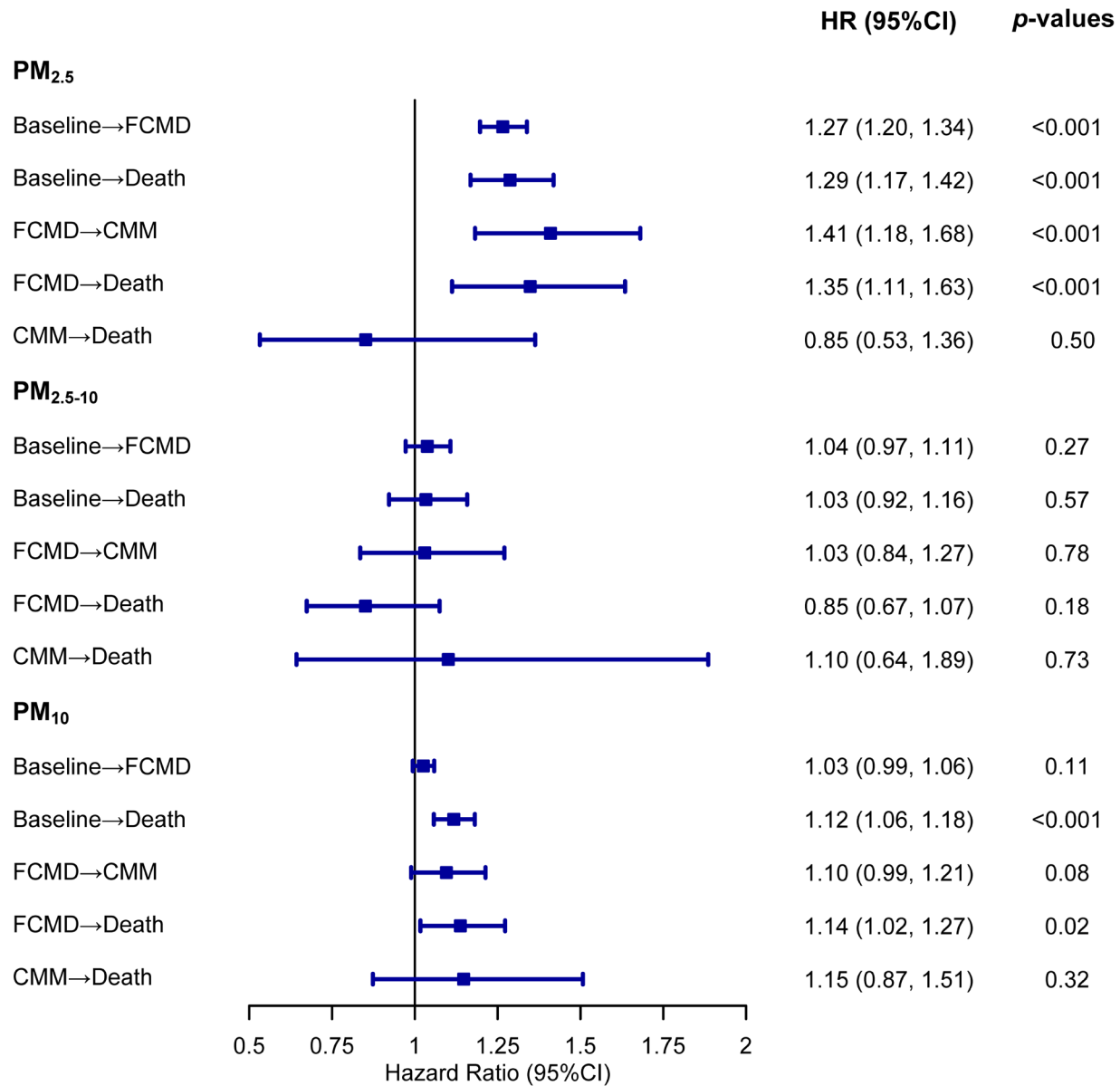
547 **Table S13** Associations of air pollution with the trajectories of cardiometabolic multimorbidity of  
548 pattern A using multi-state model in white participants

549 **Table S14** Associations of air pollution with the trajectories of cardiometabolic multimorbidity of  
550 pattern A using multi-state model in participants living in the baseline address for more than five  
551 years

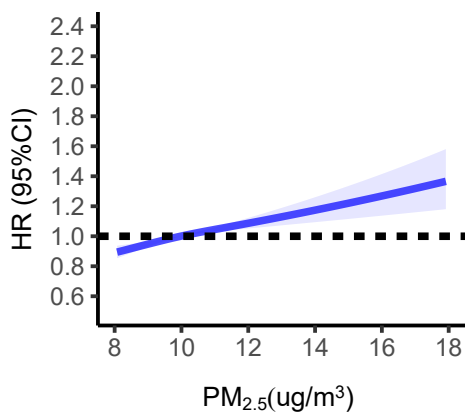
552 **Table S15** Associations of air pollution with the trajectories of cardiometabolic multimorbidity of  
553 pattern A using multi-state model by the age of having the first cardiometabolic disease



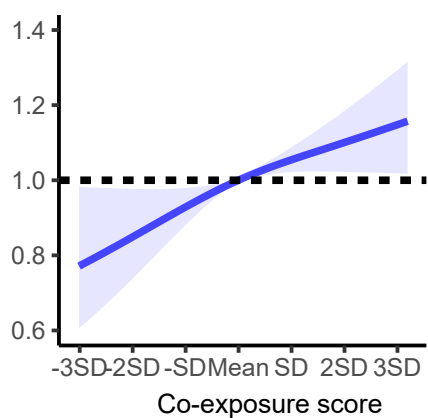
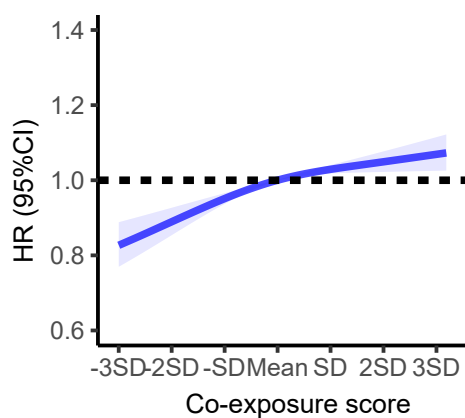
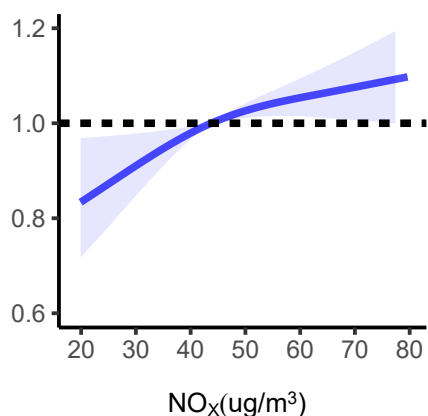
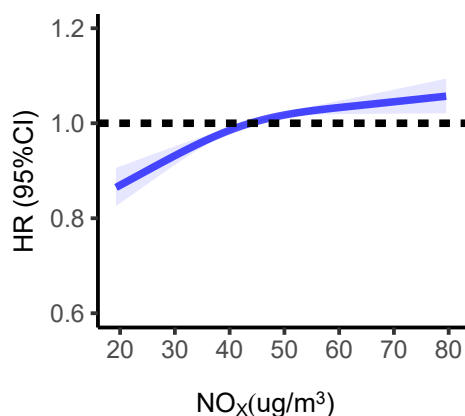
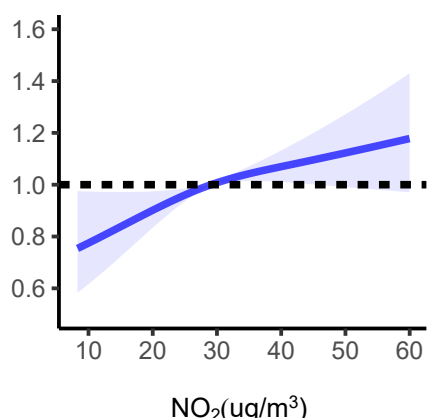
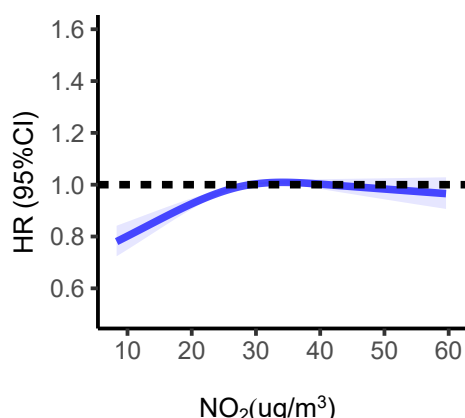
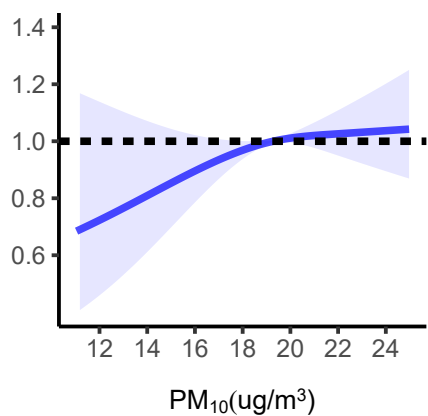
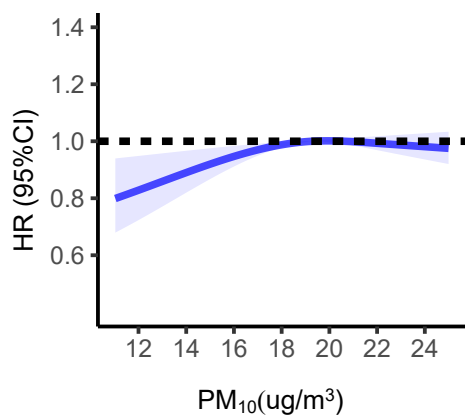
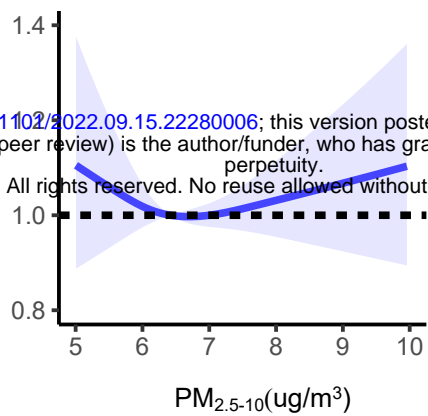
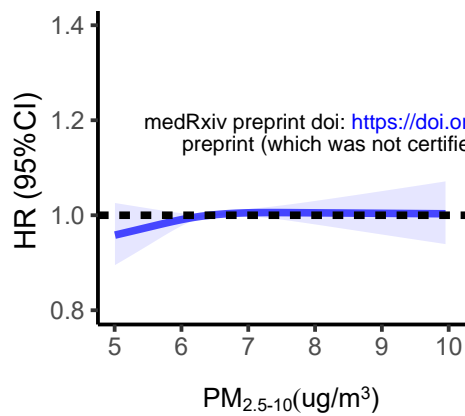
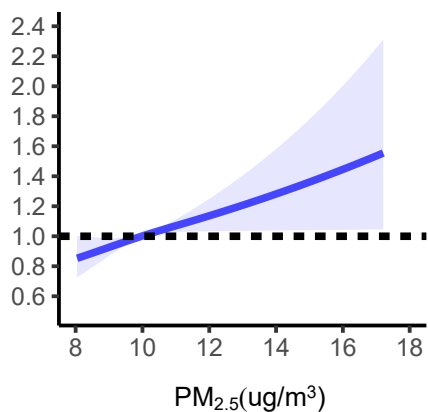
Pattern A
  Pattern B



Baseline → FCMD

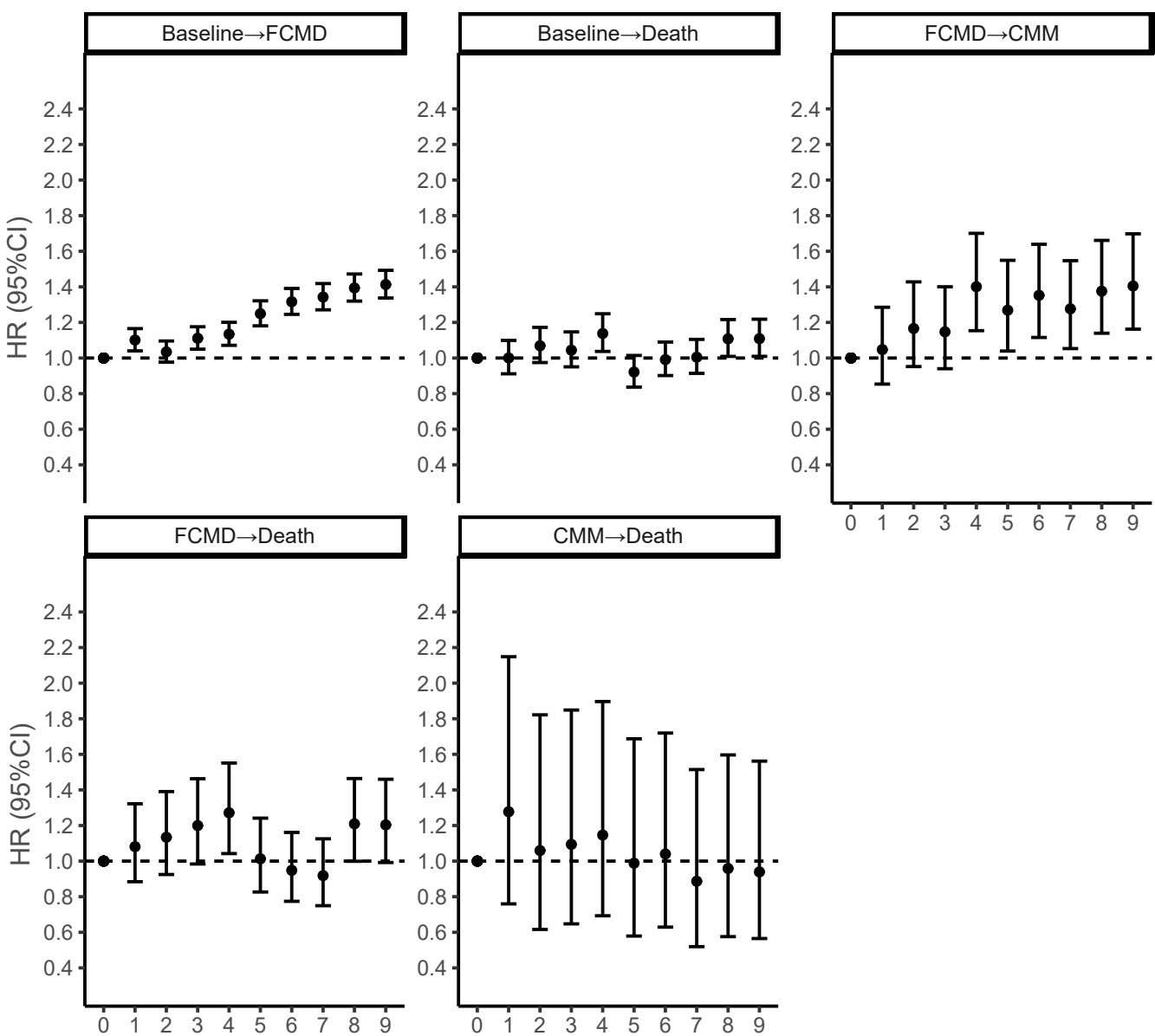


FCMD → CMM



medRxiv preprint doi: <https://doi.org/10.1101/2022.09.15.22280006>; this version posted September 15, 2022. The copyright holder for this preprint (which was not certified by peer review) is the author/funder, who has granted medRxiv a license to display the preprint in perpetuity. All rights reserved. No reuse allowed without permission.





**Table 2** Associations of five air pollutants and co-exposure score with the risks of first cardiometabolic disease, cardiometabolic multimorbidity, and death after the first cardiometabolic disease of pattern B using multi-state model <sup>a</sup>

Air pollutants	PM <sub>2.5</sub>	PM <sub>2.5-10</sub>	PM <sub>10</sub>	NO <sub>2</sub>	NO <sub>x</sub>	Co-exposure score <sup>a</sup>
Trajectories	HR (95% CI)	HR (95% CI)	HR (95% CI)	HR (95% CI)	HR (95% CI)	HR (95% CI)
<b>Baseline→T2D</b>	<b>1.47 (1.34, 1.60)</b>	1.86 (1.12, 3.08)	<b>1.79 (1.40, 2.30)</b>	<b>1.21 (1.15, 1.28)</b>	<b>1.12 (1.09, 1.15)</b>	<b>1.08 (1.06, 1.10)</b>
<b>Baseline→IHD</b>	<b>1.13 (1.04, 1.22)</b>	0.76 (0.48, 1.21)	0.76 (0.61, 0.95)	0.98 (0.93, 1.02)	<b>1.03 (1.00, 1.05)</b>	1.01 (1.00, 1.03)
<b>Baseline→Stroke</b>	<b>1.23 (1.02, 1.48)</b>	1.89 (0.65, 5.51)	1.26 (0.75, 2.11)	1.04 (0.93, 1.16)	<b>1.05 (0.98, 1.11)</b>	1.03 (0.99, 1.08)
<b>T2D→CMM</b>	<b>1.05 (1.01, 1.10)</b>	1.01 (0.96, 1.06)	1.01 (0.99, 1.04)	<b>1.00 (1.00, 1.01)</b>	<b>1.00 (1.00, 1.01)</b>	1.05 (1.00, 1.10)
<b>IHD→CMM</b>	<b>1.51 (1.08, 2.10)</b>	0.90 (0.12, 6.56)	1.24 (0.46, 3.35)	<b>1.28 (1.04, 1.58)</b>	<b>1.15 (1.04, 1.27)</b>	<b>1.10 (1.02, 1.18)</b>
<b>Stroke→CMM</b>	1.01 (0.88, 1.15)	0.92 (0.78, 1.09)	0.98 (0.91, 1.06)	<b>1.01 (1.00, 1.02)</b>	1.00 (0.98, 1.01)	0.99 (0.85, 1.14)
<b>T2D→Death</b>	1.03 (0.97, 1.10)	0.99 (0.92, 1.07)	1.01 (0.98, 1.05)	1.00 (1.00, 1.01)	1.00 (1.00, 1.01)	1.04 (0.97, 1.11)
<b>IHD→Death</b>	<b>1.10 (1.04, 1.17)</b>	0.95 (0.88, 1.02)	<b>1.03 (1.00, 1.07)</b>	<b>1.01 (1.01, 1.02)</b>	<b>1.01 (1.00, 1.01)</b>	<b>1.13 (1.06, 1.20)</b>
<b>Stroke→Death</b>	1.01 (0.92, 1.10)	0.94 (0.84, 1.04)	1.01 (0.96, 1.07)	1.01 (1.00, 1.02)	1.00 (0.99, 1.01)	1.02 (0.93, 1.12)

a: Models adjusted for age, sex, ethnicity, BMI, years of education, smoking status, moderate alcohol intake, high-level physical activity, total household income, and employment status. Estimates of air pollutants were demonstrated per 5- $\mu\text{g}/\text{m}^3$  increase and estimates of co-exposure score were demonstrated per one SD increase. Bolded-values were statistically significant ( $p$ -values <0.05).