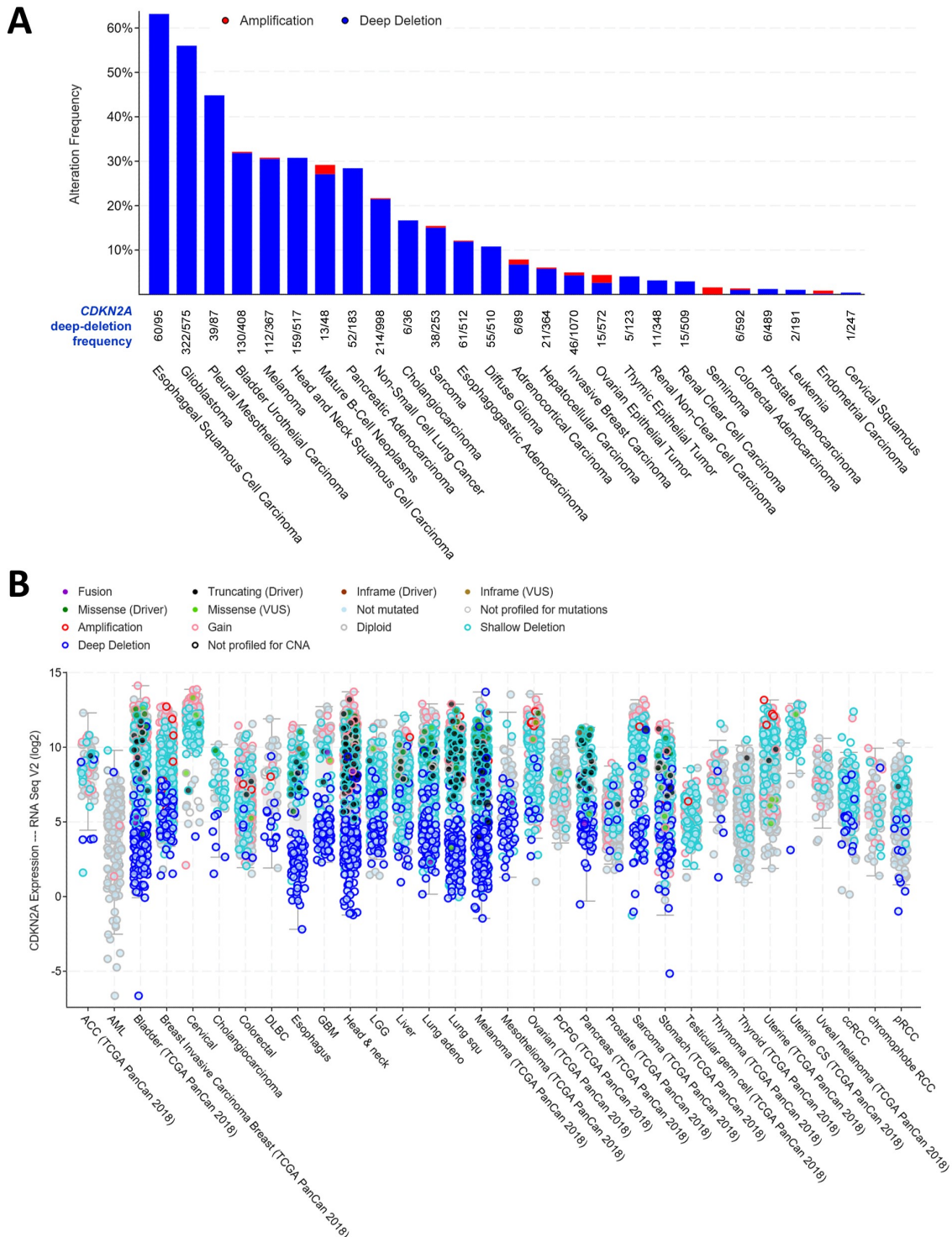
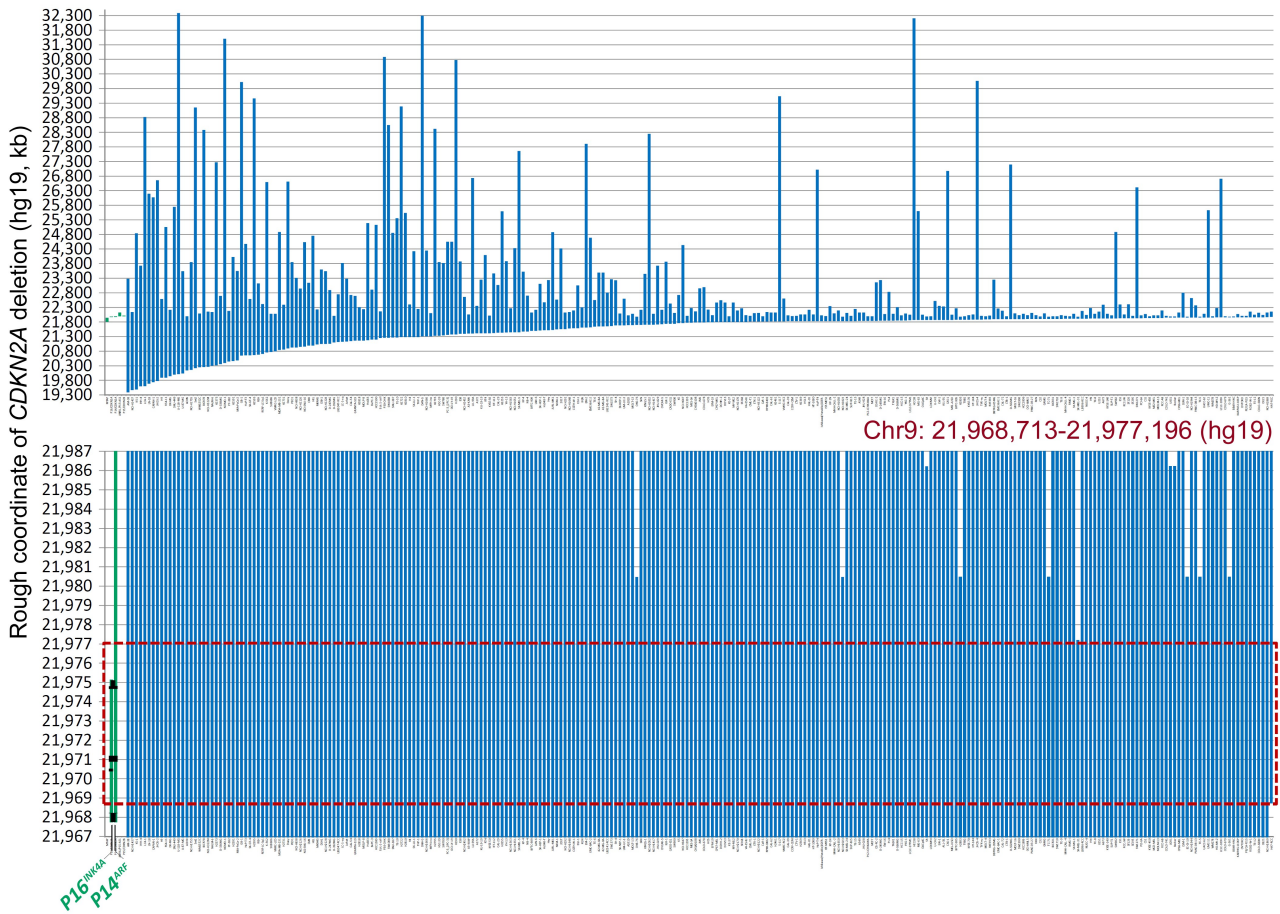


1 Supplementary Data Information



2

3 **Figure S1.** Prevalence of *CDKN2A* deep-deletion and the levels of gene expression in 10967 samples from
 4 cancer patients in Pan-TCGA studies. **(A)** Prevalence of *CDKN2A* deep deletion according to the TCGA
 5 SNP-array data. The number of total cancer cases and cases with *CDKN2A* deep-deletion are listed for each
 6 kind of cancer. **(B)** The levels of *P16^{INK4a}* mRNA determined by RNA sequencing in cancers with various
 7 *CDKN2A* genetic changes. The charts for patients (n=10953) in 32 Pan-TCGA studies were adapted from a
 8 graphic view at the cBioPortal Cancer Genomics website (www.cbioportal.org).

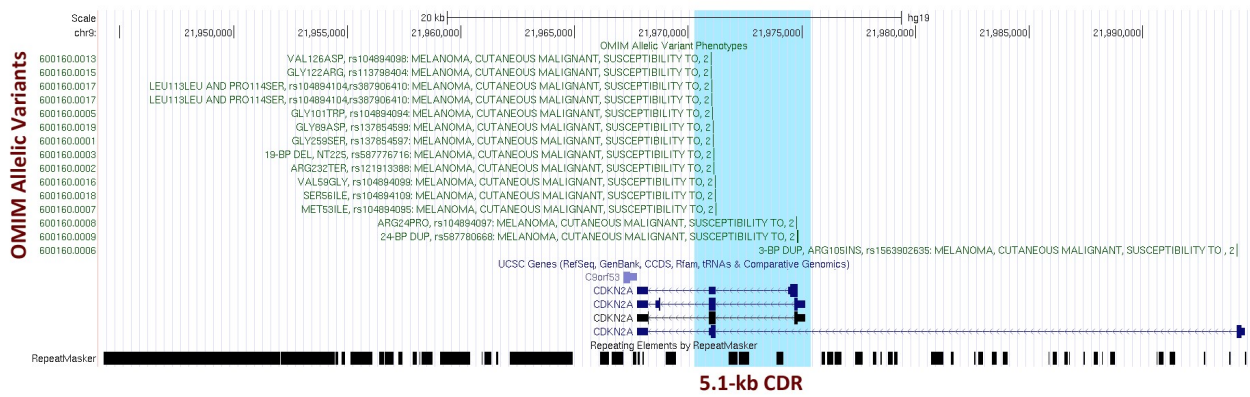


1

2 **Figure S2.** Estimated genomic coordinates of interstitial *CDKN2A* deletion/fusion in 273 human cancer cell
 3 lines with *CDKN2A* homozygous deletion according to the COSMIC data. The top chart displays the
 4 coordinates of most deletion fragments. The sample ID is labeled under each column. The bottom chart
 5 displays the amplified view of these deletion fragments, where the 8.5-kb common deletion region (CDR) is
 6 highlighted with a red dashed line rectangle. Each line represents a *CDKN2A* deletion fragment. The
 7 locations of *P16*^{INK4a} and *P14*^{ARF} (green lines) and exon-1α/2β (black dots) are also labeled as landmarks. The
 8 detailed deletion coordinates for each sample are listed in Data file 1.

9

1



2

3 **Figure S3.** Distribution pattern of the Online Mendelian Inheritance in Man (OMIM) allelic variants within
 4 the *CDKN2A* common deletion region (CDR, highlighted in blue shadow). 12 allelic variants are located in
 5 *CDKN2A* exon-2, 2 allelic variants are located in *CDKN2A* exon-1 α , and 1 allelic variant is located in *CDKN2A*
 6 exon-1 β . This chart was adapted from the UCSC Genome Browser on March 10, 2021.

7

8

1 **Supplementary Data file list**

- 2 **Data file 1.** Estimated coordinates of *CDKN2A* deep-deletion for 273 cancer cell lines by SNP-array
- 3 **Data file 2.** Estimated coordinates of *ATM* deep-deletion for TCGA cancers by SNP-array
- 4 **Data file 3.** Estimated coordinates of *CDKN2A* deep-deletion for TCGA cancers by SNP-array
- 5 **Data file 4.** Estimated coordinates of *FAT1* deep-deletion for TCGA cancers by SNP-array
- 6 **Data file 5.** Estimated coordinates of *miR31HG* deep-deletion for TCGA cancers by SNP-array
- 7 **Data file 6.** Estimated coordinates of *PTEN* deep-deletion for TCGA cancers by SNP-array
- 8 **Data file 7.** Estimated coordinates of *RB1* deep-deletion for TCGA cancers by SNP-array
- 9 **Data file 8.** Estimated coordinates of *CCSER1* deep-deletion for TCGA cancers by SNP-array
- 10 **Data file 9.** Estimated coordinates of *FHIT* deep-deletion for TCGA cancers by SNP-array
- 11 **Data file 10.** Estimated coordinates of *LRP1B* deep-deletion for TCGA cancers by SNP-array
- 12 **Data file 11.** Estimated coordinates of *WWOX* deep-deletion for TCGA cancers by SNP-array
- 13 **Data file 12.** True coordinates of *CDKN2A* interstitial deletion/fusion for 110 cancer cell lines and
14 tissues by sequencing
- 15 **Data file 13.** The status for *CDKN2A* SCN in gastric cancer samples and sample purity
- 16 **Data file 14.** *CDKN2A* homozygous deletion in STADs from patients by WGS or WES