

Supplementary data 1: Multi-echo 3D FLASH acquisition parameters for Siemens Magnetom PRISMA MRI

	PDw	T1w	MTw
TR [ms]	24.5	24.5	24.5
Flip angle [°]	6	21	6
Bipolar gradient echoes/TE [ms]	8/TE 2.34 – 18.72	8/TE 2.34 – 18.72	6/TE 2.34 – 14.04
Off-resonance Gaussian MT pulse	N/A	N/A	FA: 220° Frequency offset: 2 [kHz]
Bandwidth [Hz/Px]	465	465	465

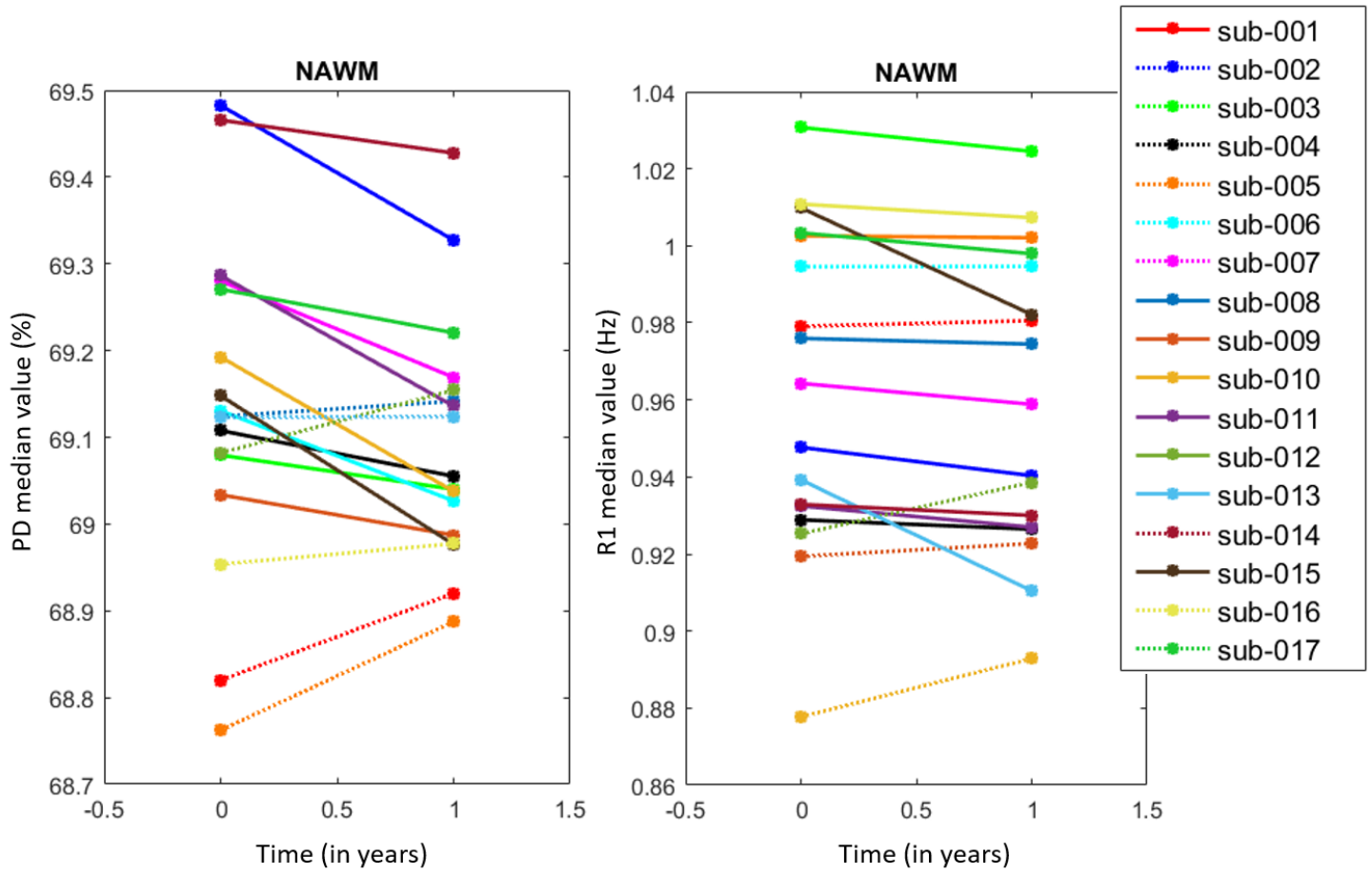
Supplementary data 2: Extended demographic data. Age, disease duration, EDSS and relapses values were taken at baseline.

	Age range	Sex	Disease duration	MS type	EDSS	Disease modifying treatment	Total number of relapses at T0 (inclusion)
sub-001	36-40	F	0.8	RRMS	2	First line	1
sub-002	26-30	F	0.7	RRMS	1.5	Second line	2
sub-003	31-35	M	1.6	RRMS	2	First line	1
sub-004	26-30	M	1.8	RRMS	3	Second line	2
sub-005	36-40	F	3.4	RRMS	1	Second line	1
sub-006	21-25	M	0.3	RRMS	1.5	First line	1
sub-007	31-35	F	1.6	RRMS	2	Second line	2
sub-008	61-65	M	16	PMS	4	None	N/A
sub-009	31-35	M	11.4	RRMS	3	Second line	5
sub-010	31-35	M	10	PMS	6	None	N/A
sub-011	61-65	M	25	PMS	6	None	N/A
sub-012	26-30	F	4	RRMS	1	First line	1
sub-013	61-65	F	23.7	PMS	5.5	None	N/A
sub-014	51-55	F	28	RRMS	2.5	First line	4
sub-015	46-50	M	8.9	PMS	4	Ocrelizumab	N/A
sub-016	36-40	M	2	PMS	5	Ocrelizumab	N/A
sub-017	46-50	M	0.5	RRMS	2	Second line	2

Supplementary data 3: Additional follow-up clinical data for each subject.

	Annual relapse rate	IV steroids	Treatment change
sub-001	0	None	None
sub-002	0	None	None
sub-003	0	None	None
sub-004	0	None	None
sub-005	0	None	None
sub-006	0	None	None
sub-007	0	None	Switch from natalizumab to ocrélizumab
sub-008	N/A	None	None
sub-009	0	None	Switch from natalizumab to alemtuzumab
sub-010	N/A	None	None
sub-011	N/A	None	None
sub-012	0	None	None
sub-013	N/A	None	None
sub-014	0.21	1 between T0 and T1/2	Start Glatiramer acetate after the relapse
sub-015	N/A	None	Start ocrélizumab at T1/2
sub-016	N/A	None	Start ocrélizumab at T1/2
sub-017	0.43	2 between T0 and T1	Start Glatiramer acetate after first relapse

Supplementary data 4: Line plots illustrating individual AROCs for PD (left) and R1 (right) in NAWM. Each line corresponds to one subject. Dotted lines represent increasing rates.



Supplementary data 5: Differences of lesion class Least Squares Means. First two columns correspond to tissue class labels (0 = NAWM, 1 = Later peripheral lesion, 2 = Initial peripheral lesion, 3 = FLAIR lesion).

MTsat

TISSUE_CLASS	_TISSUE_CLASS	Estimate	Standard Error	DF	t Value	Pr > t
0	1	0.1761	0.06105	2956	2.88	.0040
0	2	0.4153	0.06105	2956	6.80	<.0001
0	3	0.4914	0.06105	2956	8.05	<.0001
1	2	0.2393	0.04084	2427	5.86	<.0001
1	3	0.3153	0.04084	2427	7.72	<.0001
2	3	0.07604	0.04084	2427	1.86	.0627

PD

TISSUE_CLASS	_TISSUE_CLASS	Estimate	Standard Error	DF	t Value	Pr > t
0	1	-0.03620	0.008791	4040	-4.12	<.0001
0	2	-0.07043	0.008791	4040	-8.01	<.0001
0	3	-0.09631	0.008791	4040	-10.96	<.0001
1	2	-0.03422	0.005147	3395	-6.65	<.0001
1	3	-0.06010	0.005147	3395	-11.68	<.0001
2	3	-0.02588	0.005147	3395	-5.03	<.0001

R1

TISSUE_CLASS	_TISSUE_CLASS	Estimate	Standard Error	DF	t Value	Pr > t
0	1	0.1004	0.03359	3265	2.99	.0028
0	2	0.2187	0.03359	3265	6.51	<.0001
0	3	0.2938	0.03359	3265	8.75	<.0001
1	2	0.1183	0.02215	2718	5.34	<.0001
1	3	0.1934	0.02215	2718	8.73	<.0001
2	3	0.07516	0.02215	2718	3.39	.0007

R2*

TISSUE_CLASS	_TISSUE_CLASS	Estimate	Standard Error	DF	t Value	Pr > t
0	1	0.1043	0.03137	3927	3.32	.0009
0	2	0.1672	0.03137	3927	5.33	<.0001
0	3	0.2499	0.03137	3927	7.97	<.0001
1	2	0.06288	0.01851	3236	3.40	.0007
1	3	0.1456	0.01851	3236	7.86	<.0001
2	3	0.08273	0.01851	3236	4.47	<.0001