

40 **ABSTRACT**

41 **Background:** Certain combinations of medications can be harmful and may lead to serious drug-
42 drug interactions. Identifying potentially problematic medication clusters could help guide
43 prescribing decisions in hospital.

44
45 **Objectives:** To characterize medication prescribing patterns at hospital discharge and determine
46 which medication clusters are associated with an increased risk of adverse drug events (ADEs) in
47 the 30-days post hospital discharge.

48
49 **Methods:** All residents of the province of Ontario in Canada aged 66 years or older admitted to
50 hospital between March 2016-February 2017 were included. Identification of medication
51 prescribing clusters at hospital discharge was conducted using latent class analysis. Cluster
52 identification was based on medications dispensed 30-days post-hospitalization. Multivariable
53 logistic regression was used to assess the potential association between membership to a particular
54 medication cluster and ADEs post-discharge, while also evaluating other patient characteristics.

55
56 **Results:** 188,354 patients were included in the study cohort. Median age (IQR) was 77 (71-84)
57 and patients had a median (IQR) of 9 (6-13) medications dispensed in the year prior to admission.
58 The study population consisted of 6 separate clusters of dispensing patterns post discharge:
59 Cardiovascular (14%), respiratory (26%), complex care needs (12%), cardiovascular and
60 metabolic (15%), infection (10%) and surgical (24%). Overall, 12,680 (7%) patients had an ADE
61 in the 30-days following discharge. After considering other patient characteristics, those in the
62 respiratory cluster had the highest risk of ADEs (aOR: 1.12, 95% CI: 1.08-1.17) compared to all
63 the other clusters, while those in the neurocognitive & complex care needs cluster had the lowest
64 risk (aOR:0.82, 95% CI: 0.77-0.87).

65
66 **Conclusion:** This study suggests that ADEs post hospital discharge are linked to identifiable
67 clusters of medications, in addition to non-modifiable patient characteristics, such as age and
68 certain comorbidities. This information may help clinicians and researchers better understand what
69 patient populations and which types of interventions may benefit patients, to reduce their risk of
70 experiencing an ADE.

71

72

73

74

75

76

77 **KEY POINTS**

78

79 This study suggests that ADEs post hospital discharge are linked to identifiable clusters of
80 medications, in addition to non-modifiable patient characteristics, such as age and certain
81 comorbidities. This information may help clinicians and researchers better understand what patient
82 populations and which types of interventions may benefit patients, to reduce their risk of
83 experiencing an ADE.

84

85 **PLAIN LANGUAGE SUMMARY**

86

87 Certain combinations of medications prescribed to patients when they are being discharged from
88 hospital can increase the risk of adverse events after hospital discharge.

89

90

91

92

93

94

95

96

97

98

99

100

101

102

103

104

105

106

107

108

109

110

111

112

113

114

115

116

117 **INTRODUCTION**

118
119 Adverse drug events (ADEs) are common following an acute hospitalization, especially among
120 older adults using multiple medications.¹ Post-discharge ADEs arise from multiple factors
121 including inappropriate or low value prescribing, medication changes by the in-hospital care team,
122 side effects related to new medications, and inadequate monitoring of high risk medications (e.g.,
123 anti-coagulants, antihyperglycemics, or combinations thereof etc.).²⁻⁴ Medication changes occur
124 often for older adults during hospitalization.⁵⁻⁷ For example, a recent study by our team found that
125 medical and surgical patients discharged from hospital were prescribed an average of 8
126 medications at discharge with 4 medication changes; 61% of changes were newly prescribed
127 medications, 24% were discontinuations, and 15% were dose changes.⁸ A related study
128 demonstrated that newly prescribed medications were associated with the highest risk of ADEs
129 following discharge, compared to medications that were continued from prior to admission.³

130 Associations between specific medications or medication classes and adverse events
131 following hospitalization have been evaluated (e.g., newly initiated antihypertensives are
132 associated with an increased fall risk post-discharge);^{1,9,10} however, no study has examined the
133 association between *clusters* of medications prescribed at discharge from hospital and the risk of
134 ADEs to our knowledge. A medication cluster refers to groups of medications that a patient is
135 taking concurrently over a given period of time. For example, the co-occurrence of psychiatric
136 disorders with diabetes, hypertension, and coronary artery disease within a single patient is
137 common,¹¹ however, the combined safety of medications to treat these conditions simultaneously
138 (e.g., combination of antihyperglycemics, calcium channel blockers, lipid modifying agents and
139 psychoanaleptics) is not known.^{12,13} Indeed, certain combinations of medications can be harmful
140 and may lead to serious drug-drug and drug-condition interactions (e.g., opioids and

141 gabapentinoids; combination sedatives; anticholinergic burden; combination blood thinners).^{14,15}
142 Identifying potentially problematic clusters could help guide prescribing decisions in hospital
143 related to re-evaluating newly started therapies as well as potentially deprescribing usual home
144 medications. This could also help identify patients at high risk of ADEs who would benefit from
145 targeted pharmacy specialty support prior to discharge.

146 Using administrative health data, the primary objective of this study was to characterize
147 medication prescribing patterns at hospital discharge and determine which medication clusters
148 were associated with an increased risk of ADEs in the 30-days post hospital discharge. The
149 secondary objective was to confirm other previously described patient-level factors associated with
150 the occurrence of ADEs .

151 **METHODS**

152 *Study design & setting*

153 We conducted a population based retrospective cohort study from March 1, 2016-February 28,
154 2017, of residents aged 66 years of age or older living in the province of Ontario, Canada. Ontario
155 has a diverse, multicultural population of approximately 2 million people aged 65 years of age or
156 older. All Ontario residents receive universal access to physician and hospital services, and those
157 aged 65 years and up receive medication coverage through a provincial publicly-funded drug
158 insurance program. Ethics approval for data access was obtained from the Ontario Ministry of
159 Health and Trillium Health Partners. Patient consent was not required since the data was fully
160 anonymized.

161

162

163

164 *Data sources*

165 Multiple linked healthcare administrative databases were utilized for this study. Patient
166 demographics and healthcare records were linked using encrypted health card numbers which
167 served as unique and anonymous identifiers across databases. The Ontario Registered Persons
168 Database contains basic demographic information including death.¹⁶ The Ontario Drug Benefits
169 database contains prescription medication claims for all residents aged 65 years or older for
170 medications dispensed to non-hospitalized patients.¹⁷ The Canadian Institutes of Health
171 Information's Discharge Abstract Database and National Ambulatory Care Reporting System
172 contains detailed information for all admissions to hospital and emergency department visits. The
173 Ontario Health Insurance Plan physician claims database contains information on all outpatient
174 services provided by fee-for-service physicians.

175

176 *Study Population*

177 All Ontario residents aged 66 years or older admitted to hospital between March 1 2016-February
178 28 2017 were included. If patients were admitted more than once during the study period, only
179 their first hospital episode was considered. We limited the study population to those aged 66 and
180 above as medications are covered under the Ontario Drug Benefits (ODB) program for those aged
181 65 and above in Ontario, and thus outpatient medication dispensing data is available for this
182 population from 1 year prior to hospitalization. We included only those patients who were
183 discharged to home or to a long term care facility. Patients who were transferred to or from another
184 acute care setting were excluded since we would not have a record of their most recent medication
185 use histories. Additionally, we excluded patients who did not have at least one medication with a
186 valid Anatomical Therapeutic Chemical (ATC) code dispensed in the 30-days following discharge

187 prior to another healthcare visit. To improve the performance of our clustering algorithm and
188 identify the most clinically relevant clusters, medication classes with a prevalence of less than 1%
189 were excluded (see Appendix Table A1 for list of excluded medications) (Figure 1). Study patients
190 were followed until they were re-hospitalized, visited the emergency department (ED), died from
191 any cause or the study period ended (30-days following index date), whichever occurred first.

192

193 *Medications dispensed post-hospitalization*

194 Medications dispensed following hospital discharge were measured using prescription claims for
195 medications in the 30-days following hospital discharge. For each dispensed medication,
196 information about the drug identification number (DIN), Anatomical Therapeutic Chemical (ATC
197 code), dispensing date, quantity dispensed and days supply was available. Medications dispensed
198 following a post-discharge healthcare encounter (outpatient visit, ED visit, hospital readmission
199 following index date) were excluded to ensure dispensed medications would capture prescribing
200 decisions made during the index hospital stay alone. This approach was intended to capture
201 medications that were part of the patients' discharge prescription (either newly prescribed or
202 continued from the community prior to the index admission). New medications were defined as
203 those which were not dispensed in the year prior to the index admission and were subsequently
204 dispensed in the 30-days following discharge, while medications continued at hospital discharge
205 were those that were dispensed in the 1-year prior to admission and also dispensed in the 30-days
206 following discharge. Medication class was defined using 3-digit ATC codes¹⁸ and distinct
207 medications within each class were identified according to generic drug name.

208

209

210 *Patient characteristics potentially associated with ADEs*

211 We measured a number of patient characteristics informed by previously published studies on risk
212 factors for ADEs in the hospital and post-discharge setting^{9,19-21} and included: patient
213 demographics (age, sex), health service utilization in the one year prior to hospitalization (number
214 of hospitalizations, ED visits, distinct medications dispensed), pre-admission chronic conditions
215 (identified using ICD-9 & ICD-10 codes; appendix Table A2), number of pre-admission chronic
216 conditions, characteristics of the hospital stay (institution admitted from, reason for admission,
217 main patient service, discharge disposition), the number of medications dispensed overall in the
218 30-days following discharge as well as the number of new medications.

219

220 *Outcomes*

221 The primary outcome for this study was the occurrence of ADEs (identified using ICD-10 codes
222 for ED visits and hospital readmissions; Appendix Table A3)²² in 30-days following the index
223 hospital discharge. Discharge date for the first eligible hospital episode was the index date.

224

225 **STATISTICAL ANALYSIS**

226 Descriptive statistics were used to summarize patient characteristics for the entire study cohort. To
227 characterize medication use in the 30-days following discharge, the prevalence of each medication
228 class was calculated (overall and incidence of new use) and the most common drugs in each class
229 were identified.

230 Identification of medication prescribing clusters at hospital discharge was conducted using
231 latent class analysis (LCA). LCA is a model-based method of clustering that identifies unique
232 groups or segments in a population when we do not have a variable that records group

233 membership.²³ Cluster identification was based on medications dispensed 30-days post-
234 hospitalization using medication classes (3-digit ATC codes). Each medication class was included
235 as a binary variable at the patient level (patient dispensed a medication in this class yes/no). LCA
236 was performed successively where we started with a single class model under the assumption that
237 all patients were dispensed the same combinations of medications following discharge. Then,
238 increasing numbers of classes were added one at a time. The optimal number of subgroups (“n”)
239 was decided by considering the best fit for the data (identified using the Bayesian information
240 criterion [BIC]) and clinical interpretability of each cluster. The best fitting model with n-classes
241 was identified and each patient was assigned to their most likely class based on these model
242 probabilities. The difference in the prevalence of each medication class within a particular cluster
243 vs the prevalence of medication class in the overall population was calculated (e.g., prevalence of
244 patients dispensed diuretics in cluster 1- prevalence of patients dispensed diuretics overall) as was
245 the prevalence of cluster membership among those dispensed each medication class (e.g., number
246 of patients in cluster 1 dispensed diuretics/total number of patients dispensed diuretics). Clinicians
247 on the team reviewed each cluster and agreed upon a clinically meaningful description for each.
248 Patient descriptives were calculated according to medication cluster membership. The crude risk
249 of ADEs were calculated overall and for each cluster separately.

250 Multivariable logistic regression models were constructed to assess the potential
251 association between membership to a particular medication cluster and ADEs post-discharge,
252 while also evaluating other patient characteristics historically associated with ADEs. The binary
253 outcome was the occurrence of at least one ADE in the 30-days following discharge. Both cluster
254 membership and patient characteristics were included as covariates in the same model. Six separate
255 logistic models were constructed where a binary variable was included for each cluster separately

256 in order to obtain the adjusted risk associated with belonging to a given cluster compared to all
257 other clusters. Adjusted odds ratios and 95% confidence intervals were obtained for each covariate
258 in the logistic regression model.

259

260 *Sensitivity analysis*

261 While ICD-10 code sets to identify ADE's have high specificity, they only have a sensitivity of up
262 to 28%.²⁴⁻²⁶ All cause events will capture events that medications likely did not contribute to (e.g.,
263 pneumonia, sepsis, urinary tract infection), however, ADEs can also manifest as worsening of a
264 patient's underlying disease (e.g., statin non-adherence and occurrence of stroke)²⁷ which would
265 not be coded as being medication related. Therefore, in order to confirm the robustness of our
266 results, and capture adverse events that were not necessarily coded as drug related, we re-
267 conducted our primary analysis using a composite outcome of all cause emergency department
268 visits or mortality in 30-days.

269 **RESULTS**

270 Overall, 837,655 patients were admitted to hospital in Ontario between March 1 2016 and February
271 28 2017. After excluding those who were younger than 66 (n=544,064; 65%), those who were
272 admitted from another acute care facility (n=10,720; 1%), and patients who did not have eligible
273 medications dispensed 30-days post discharge prior to another healthcare encounter (n=84,539;
274 10%), 188,354 patients were included in the study cohort (Figure 1).

275 Median age (IQR) of the study participants was 77 (71-84) years and 53% were female. In
276 the 1-year prior to the index hospital stay, 18% of patients had at least one hospitalization, patients
277 had a median (IQR) of 2 (1-3) ED visits, 9 (6-13) medications dispensed, and 2 (1-3) chronic
278 conditions. The most common chronic conditions included cancer (32% of patients), diabetes

279 (26%) and osteoarthritis (25%). Most patients were admitted from the community and were not
280 receiving home care (84%), 11% were admitted from long-term care and 5% were admitted from
281 an outpatient clinic. The most common services patients were admitted to included general
282 medicine (43%), orthopedic surgery (15%), general surgery (10%) and cardiology (8%). In the 30-
283 days following discharge, a median (IQR) of 3 medications (2-6) were dispensed overall and 79%
284 of patients had at least one new medication dispensed (Table 1). The top 5 most common
285 medication classes (including new and continued medications) included: analgesics (40%
286 prevalence, most common were hydromorphone and oxycodone), antithrombotics (30%
287 prevalence, most common warfarin and clopidogrel), lipid modifying agents (25% prevalence,
288 most common atorvastatin), drugs for acid related disorders (24% prevalence, most common
289 pantoprazole) and antibacterials for systemic use (23% prevalence, most common ciprofloxacin,
290 cefalexin, amoxicillin clavulanic acid cefuroxime) (Table 2).

291 Goodness of fit statistics indicated that the study population consisted of 6 separate
292 clusters of medication dispensing patterns. **Cluster 1** (“cardiovascular” cluster, n=25,995; 14% of
293 study cohort) was characterized by use of beta blocking agents (e.g., metoprolol), cholesterol
294 lowering agents (e.g., atorvastatin), antithrombotics (e.g., warfarin, clopidogrel), agents acting on
295 the renin angiotensin system (e.g., ramipril, perindopril) and cardiac therapy (e.g., digoxin,
296 nitroglycerin). Patients in this cluster were more likely to be male, had a higher prevalence of acute
297 myocardial infarction, arrhythmia, heart failure and coronary artery syndrome, were more likely
298 to be admitted from home without homecare, to be admitted for a circulatory related diagnosis,
299 and receive care on a cardiology unit (Table 1). **Cluster 2** (“respiratory” cluster, n=47,747; 26%)
300 was characterized by use of corticosteroids for systemic use (e.g., prednisone) drugs for obstructive
301 airway diseases (e.g., salbutamol) and antivirals for systemic use (e.g., oseltamivir). Patients in this

302 cluster had a higher prevalence of COPD and were more likely to have been admitted for a
303 respiratory related diagnosis and to receive care on a general medicine unit (Table 1). **Cluster 3**
304 (“complex care needs” cluster, n=22,147; 12%) was characterized by use of antidepressants (e.g.,
305 trazodone, escitalopram) antipsychotics (e.g., quetiapine, risperidone), drugs for acid related
306 disorders (e.g., pantoprazole), gabapentinoids (e.g., gabapentin, pregabalin), analgesics (e.g.,
307 hydromorphone, oxycodone), drugs for constipation (e.g., docusate), thyroid therapy (e.g.,
308 levothyroxine) and anti-parkinson's drugs (e.g., carbidopa/levodopa). Patients in this cluster were
309 more likely to be female, had a greater number of medications dispensed prior to admission, were
310 more likely to have dementia, any mental health disorder, or mood/anxiety disorder, were more
311 likely to have been admitted from long term care, be admitted for a mental health, nervous system
312 or injury related diagnosis and were most likely to receive care on a general medicine unit. (Table
313 1) **Cluster 4** (“cardiovascular and metabolic”; n=28,924, 15%) was characterized by use of
314 cholesterol lowering agents, beta blocking agents, drugs for acid related disorders, diuretics (e.g.,
315 furosemide), agents acting on the renin-angiotensin system, drugs used in diabetes (e.g.,
316 metformin), calcium channel blockers (e.g., amlodipine), antipsychotics, anti-thrombotics, anti-
317 gout preparations (e.g., allopurinol) and other anti-hypertensives (e.g., hydralazine). Patients in
318 this cluster had more medications dispensed prior to admission, were more likely to have
319 cardiovascular conditions, diabetes and renal disease, be admitted from long term care, be admitted
320 for a circulatory related diagnosis, be on a general medicine or cardiology unit and had a high
321 proportion of multiple new medications dispensed. (Table 1) **Cluster 5** (“infection” cluster;
322 n=17,867, 10%) was characterized by use of antibacterials for systemic use (e.g., ciprofloxacin,
323 cefalexin, amoxicillin & beta-lactamase inhibitors) and anti-fungals (e.g., metronidazole). Patients
324 in this cluster were more likely to be male, have cancer, be admitted from home without homecare

325 and be admitted for a malignancy, respiratory or digestive related diagnosis (Table 1). **Cluster 6**
326 (“surgical” cluster; n=45,684, 24%) was characterized by use of analgesics, anti-thrombotics,
327 drugs for constipation and anti-inflammatory products (e.g., celecoxib, meloxicam). Patients in
328 this cluster were slightly younger, more likely to have osteoarthritis and arthritis, be admitted from
329 home, be admitted for a malignancy, or musculoskeletal related diagnosis, and be on an orthopedic
330 surgery unit (Table 1).

331 Overall, 12,680 (6.7%) patients had an ADE in the 30-days following discharge. The most
332 common diagnosis associated with ADEs across the majority of clusters was acute kidney failure
333 and volume depletion. Of note, enterocolitis due to *Clostridium difficile* was a common ADE in
334 cluster 5 (infection) and pulmonary embolism in the absence of acute cardiorespiratory disease
335 was common in cluster 6 (surgical). Crude risk of ADEs was highest for those in cluster 4
336 (cardiovascular and metabolic; 8.9%) and lowest for those in cluster 6 (surgical; 4.6%) (Table 3).

337 Our multivariable model included both variables indicating cluster membership as well as
338 patient level variables, therefore, the interpretation of the odds ratio for a given covariate in the
339 model is the risk of ADE’s associated with presence of a characteristic (vs reference) after
340 accounting for the other patient characteristics included in the model. After considering other
341 patient characteristics, those in the respiratory cluster had the highest risk of ADEs (adjusted odds
342 ratio [aOR]: 1.12, 95% CI: 1.08-1.17) compared to all the other clusters while those in the
343 neurocognitive & complex care needs cluster had the lowest risk (aOR:0.82, 95% CI: 0.77-0.87).
344 There was no difference in the risk of ADEs among patients in the cardiovascular, metabolic
345 syndrome, infection and surgical clusters when comparing each cluster to all other clusters. (Table
346 3)

347 Patient level factors that were also associated with an increased risk of ADEs included age,
348 increasing healthcare service use in the year prior to admission (hospitalizations and ED visits), a
349 greater number of pre-admission medications dispensed, presence of heart failure, arrhythmia,
350 renal disease and liver disease, being admitted from long term care, being admitted from the ED,
351 increasing length of stay, a higher Charlson Comorbidity Score, and a greater number of new
352 medications dispensed in the 30-days following discharge (Table 3). Of all the variables in the
353 model, belonging to the respiratory cluster, presence of renal disease, liver disease and heart failure
354 were associated with the highest risk of ADEs.

355 Our sensitivity analyses indicated that the direction of the point estimates for the
356 association between the characteristics included in our multivariable model and ED visits/mortality
357 was similar when compared to the primary analysis. However, the magnitude of these associations
358 was higher for the infection and surgical clusters. (Appendix Table A5).

359 **DISCUSSION**

360
361 In this population-based retrospective cohort study of older hospitalized adults, we identified 6
362 clusters of medication prescribing patterns at hospital discharge; cardiovascular, respiratory,
363 complex care needs, metabolic syndrome, infection and surgical clusters. After accounting for
364 other factors known to increase the risk of ADE after discharge, patients in the respiratory cluster
365 had the highest risk of an ADE after discharge while those in the complex care needs cluster had
366 the lowest risk. We also confirmed that a number of previously reported patient characteristics
367 were associated with an increased risk of ADEs, for example, the overall number of medications,
368 the addition of new medications, as well as the presence of heart failure, renal disease and liver
369 disease.

370 A systematic review published in 2018 aimed to determine risk factors for medication
371 related harm among older adults after hospital discharge.¹ Only 3 of the 8 included studies
372 conducted multivariable analyses to evaluate risk factors for medication-related harm. Among
373 these studies, only select medication classes (as opposed to combinations or clusters of medication
374 classes) and diagnoses were included in the multivariable analyses. The majority of studies were
375 of moderate quality and substantial methodological heterogeneity was identified with respect to
376 how related harm was measured. A higher absolute number of medications,^{28,29} the addition of
377 new medications at discharge,³⁰ warfarin^{28,29}, furosemide³¹, a lower Mini-Mental State
378 Examination score³⁰ and female sex³⁰ were all independent risk factors for medication harm
379 following hospitalization. Since this systematic review was published, three other studies have
380 evaluated risk factors for medication-related harm following a hospital stay.^{2,9,32} Risk factors from
381 these studies included the number of medication changes, prior hospitalizations preceding the
382 index admission, older age, past adverse drug reaction(s), prescriptions for antiplatelet drugs,
383 antidiabetic drugs, corticosteroids and again, a higher absolute number of medications were risk
384 factors. Consistent risk factors for an increased risk of ADEs post hospital discharge are older age,
385 the absolute number of medications and the addition of new medications at discharge, which we
386 also confirmed in our analysis. However, we found no other study that specifically evaluated
387 medication clusters or combinations of medications as an independent risk factor for ADEs post
388 discharge.

389 The results of this study inform clinical practice in two important ways. First, this study
390 provides evidence that medications tend to be prescribed in readily identifiable, predictable
391 medication clusters. Furthermore, some clusters differentially impact the risk of post hospital
392 ADEs independent of patient characteristics and the number of prescribed medications. Therefore,

393 these results could inform clinicians about new potentially modifiable risk factors for ADEs, such
394 as newly added combinations of medications, which may be important to review prior to the patient
395 being discharged. For example, in the respiratory cluster, patients were most likely to be using a
396 combination of corticosteroids, drugs for obstructive airway diseases and antivirals, and patients
397 in this cluster also had the highest independent risk of ADEs post-discharge. Thus, medications
398 prescribed to patients in this cluster (especially new medications) may be important to review prior
399 to discharge, or patients may require counseling with respect to expected or predictable side effects
400 from this medication cluster (e.g., gastrointestinal symptoms from systemic corticosteroids and
401 oseltamivir, or delirium from combinations of anticholinergic inhalers and corticosteroids).

402 Second, similar to previous studies, better understanding of non-modifiable patient-level
403 factors associated with an increased risk of ADEs in the 30-days post discharge (e.g., older age,
404 presence of heart failure etc.) can inform clinicians which patients may benefit most from resource-
405 intensive interventions to decrease ADEs (e.g., home care post discharge or targeted education
406 related to signs and symptoms to monitor for related to a potential ADE.) For example, presence
407 of heart failure, renal disease or liver disease could be important markers for patients at high risk
408 of experiencing an ADE and should have their medications reviewed by a pharmacist prior to
409 discharge. Interestingly, although the neurocognitive & complex care needs cluster was associated
410 with the highest crude risk of ADEs, after considering other patient characteristics, this cluster was
411 not associated with an increased risk of ADEs compared to any of the other clusters. This could
412 indicate that these patients may be well known to be “high risk” and are receiving adequate support
413 with respect to their medications in the post discharge period. A limitation of our study is that we
414 did not have information on factors such as involvement of a pharmacist or consultation with
415 geriatrics prior to discharge.

416 There are other limitations associated with this study that are important to keep in mind.
417 First, although patients were dispensed particular medications, they might not have taken these
418 medications as prescribed. This is a limitation associated with all studies which use dispensing
419 data to capture drug exposure. Second, we did not have access to clinical data to include in our
420 models (e.g., renal function, sodium levels) which may have led to unmeasured confounding.
421 Third, the data analyzed in this study was from 2016/2017 and the prescribing patterns for certain
422 medications have changed over this time period. For example, the use of direct oral anticoagulants
423 has increased dramatically in the past 5 years. Lastly, although we analyzed both ADEs and
424 emergency department visits as outcomes and found consistent results between the two models,
425 it's still important to acknowledge that use of ICD10 codes to measure ADEs will miss many
426 outcomes which are drug related and ED visits will also capture a number of events which are not
427 related to medications. Additional research is required with respect to valid measures of ADEs
428 using administrative health data.

429 Despite these limitations, this study is an important step towards personalized medicine as
430 it relates to appropriate prescribing. Identifying patients who are taking high risk clusters of
431 medications could lead to interventions that improve the safety of medication use following
432 hospitalization. By considering a patient's whole drug regimen, in combination with their
433 characteristics, we can take steps towards a more holistic approach to prescribing, not just focusing
434 on treating single conditions or addressing single high risk drug classes in isolation.

435 In conclusion, this study suggests that ADEs post hospital discharge are linked to
436 identifiable clusters of medications, in addition to non-modifiable patient characteristics, such as
437 age and certain comorbidities. This information may help clinicians and researchers better

438 understand what patient populations and which types of interventions may benefit patients, to
439 reduce their risk of experiencing an ADE.

440

441

442

443

444

445

446

447

448

449

450

451

452

453

454

455

456

457

458

459

460

461 **STATEMENTS AND DECLARATIONS**

462 **Conflict of Interest:** Dr. McDonald receives salary support for research from the Fond de
463 recherche santé Québec and is the owner and chief scientific officer of MedSafer, a software that
464 helps guide clinicians through the process of deprescribing for older adults with polypharmacy
465 (the intellectual property is jointly held with McGill University). Authors have no other competing
466 interests to disclose.

467

468 **Author Contributions**

469 Conceptualization - DW; Methodology - DW; Validation - DW, EGM; Formal Analysis - DW,
470 XM; Investigation - All authors; Resources - DW, WPW; Data Curation - WPW; Writing -
471 Original Draft - DW, EGM, LLS, TT, LM; Writing - Review and Editing - All authors;
472 Visualization DW, EGM

473

474 **Sponsors Role:** N/A

475

476

477

478

479

480

481

482

483

484

485

486

487

488

489

490

491

492

493

494
495
496
497
498
499
500
501
502
503
504
505
506
507
508
509
510
511
512
513
514
515
516
517
518
519
520
521
522
523
524
525
526
527
528
529
530
531
532
533
534
535
536
537
538
539
540
541
542
543

REFERENCES

1. Parekh N, Ali K, Page A, Roper T, Rajkumar C. Incidence of Medication-Related Harm in Older Adults After Hospital Discharge: A Systematic Review. *J Am Geriatr Soc*. 2018;66:1812–1822.
2. Uitvlugt EB, Janssen MJA, Siegert CEH, Kneepkens EL, van den Bemt BJB, van den Bemt PMLA, Karapinar-Çarkit F. Medication-Related Hospital Readmissions Within 30 Days of Discharge: Prevalence, Preventability, Type of Medication Errors and Risk Factors. *Front Pharmacol*. 2021;12:567424.
3. Weir DL, Lee TC, McDonald EG, Motulsky A, Abrahamowicz M, Morgan S, Buckeridge D, Tamblyn R. Both New and Chronic Potentially Inappropriate Medications Continued at Hospital Discharge Are Associated With Increased Risk of Adverse Events. *J Am Geriatr Soc* [Internet]. [cited 2020 Mar 31];n/a. Available from: <https://onlinelibrary.wiley.com/doi/abs/10.1111/jgs.16413>
4. Bates DW, Cullen DJ, Laird N, Petersen LA, Small SD, Servi D, Laffel G, Sweitzer BJ, Shea BF, Hallisey R. Incidence of adverse drug events and potential adverse drug events. Implications for prevention. ADE Prevention Study Group. *JAMA*. 1995;274:29–34.
5. Tamblyn R, Abrahamowicz M, Buckeridge DL, Bustillo M, Forster AJ, Girard N, Habib B, Hanley J, Huang A, Kurteva S, Lee TC, Meguerditchian AN, Moraga T, Motulsky A, Petrella L, Weir DL, Winslade N. Effect of an Electronic Medication Reconciliation Intervention on Adverse Drug Events: A Cluster Randomized Trial. *JAMA Netw Open*. 2019;2:e1910756–e1910756.
6. Harris CM, Sridharan A, Landis R, Howell E, Wright S. What Happens to the Medication Regimens of Older Adults During and After an Acute Hospitalization?: *J Patient Saf*. 2013;9:150–153.
7. Viktil KK, Blix HS, Eek AK, Davies MN, Moger TA, Reikvam A. How are drug regimen changes during hospitalisation handled after discharge: a cohort study. *BMJ Open*. 2012;2:e001461.
8. Weir DL, Motulsky A, Abrahamowicz M, Lee TC, Morgan S, Buckeridge DL, Tamblyn R. Challenges at Care Transitions: Failure to Follow Medication Changes Made at Hospital Discharge. *Am J Med* [Internet]. 2019 [cited 2019 Jul 10]; Available from: <https://linkinghub.elsevier.com/retrieve/pii/S0002934319304309>
9. Parekh N, Ali K, Davies JG, Stevenson JM, Banya W, Nyangoma S, Schiff R, Cammen T van der, Harchowal J, Rajkumar C. Medication-related harm in older adults following hospital discharge: development and validation of a prediction tool. *BMJ Qual Saf* [Internet]. 2019 [cited 2019 Dec 4]; Available from: <http://qualitysafety.bmj.com/content/early/2019/09/16/bmjqs-2019-009587>
10. Stevenson JM, Williams JL, Burnham TG, Prevost AT, Schiff R, Erskine SD, Davies JG. Predicting adverse drug reactions in older adults; a systematic review of the risk prediction models [Internet]. *Clin. Interv. Aging*. 2014 [cited 2019 Dec 8]; Available from: <https://www.dovepress.com/predicting-adverse-drug-reactions-in-older-adults-a-systematic-review-peer-reviewed-fulltext-article-CIA>
11. Boyd CM; L B; Weiss, C; Wolff, J; Clark, R; Richards, T. Multimorbidity Pattern Analyses and Clinical Opportunities: Diabetes. *Faces Medicaid Data Ser*. 2010;
12. Mutasingwa DR, Ge H, Upshur REG. How applicable are clinical practice guidelines to elderly patients with comorbidities? *Can Fam Physician Med Fam Can*. 2011;57:e253-262.
13. Hillas G, Perlikos F, Tsiligianni I, Tzanakis N. Managing comorbidities in COPD. *Int J Chron Obstruct Pulmon Dis*. 2015;10:95–109.
14. McDonald EG, Wu PE, Rashidi B, Forster AJ, Huang A, Pilote L, Papillon-Ferland L, Bonnici A, Tamblyn R, Whitty R, Porter S, Battu K, Downar J, Lee TC. The MedSafer Study: A Controlled Trial of an Electronic Decision Support Tool for Deprescribing in Acute Care. *J Am Geriatr Soc*. 2019;67:1843–1850.
15. Zerah L, Henrard S, Wilting I, O’Mahony D, Rodondi N, Dalleur O, Dalton K, Knol W, Haschke M, Spinewine A. Prevalence of drug-drug interactions in older people before and after hospital

- 544 admission: analysis from the OPERAM trial. *BMC Geriatr.* 2021;21:571.
- 545 16. Living and Dying in Ontario: An Opportunity to Improve Health Information [Internet]. [cited 2021
546 May 24]; Available from: [https://www.ices.on.ca/Publications/Atlases-and-Reports/2008/Living-](https://www.ices.on.ca/Publications/Atlases-and-Reports/2008/Living-and-dying-in-Ontario)
547 [and-dying-in-Ontario](https://www.ices.on.ca/Publications/Atlases-and-Reports/2008/Living-and-dying-in-Ontario)
- 548 17. Levy AR, O'Brien BJ, Sellors C, Grootendorst P, Willison D. Coding accuracy of administrative
549 drug claims in the Ontario Drug Benefit database. *Can J Clin Pharmacol J Can Pharmacol Clin.*
550 2003;10:67–71.
- 551 18. WHOCC - ATC/DDD Index [Internet]. [cited 2021 May 4]; Available from:
552 https://www.whooc.no/atc_ddd_index/
- 553 19. Gallagher PF, O'Connor MN, O'Mahony D. Prevention of Potentially Inappropriate Prescribing for
554 Elderly Patients: A Randomized Controlled Trial Using STOPP/START Criteria. *Clin Pharmacol*
555 *Ther.* 2011;89:845–854.
- 556 20. Nair NP, Chalmers L, Connolly M, Bereznicki BJ, Peterson GM, Curtain C, Castelino RL,
557 Bereznicki LR. Prediction of Hospitalization due to Adverse Drug Reactions in Elderly
558 Community-Dwelling Patients (The PADR-EC Score). *PLOS ONE.* 2016;11:e0165757.
- 559 21. O'Connor MN, O'Sullivan D, Gallagher PF, Eustace J, Byrne S, O'Mahony D. Prevention of
560 Hospital-Acquired Adverse Drug Reactions in Older People Using Screening Tool of Older
561 Persons' Prescriptions and Screening Tool to Alert to Right Treatment Criteria: A Cluster
562 Randomized Controlled Trial. *J Am Geriatr Soc.* 2016;64:1558–1566.
- 563 22. Hohl CM, Karpov A, Reddekopp L, Stausberg J. ICD-10 codes used to identify adverse drug events
564 in administrative data: a systematic review. *J Am Med Inform Assoc JAMIA.* 2014;21:547–557.
- 565 23. MacDonald K. Latent Class Analysis (LCA) in Stata. :58.
- 566 24. Hohl CM, Kuramoto L, Yu E, Rogula B, Stausberg J, Sobolev B. Evaluating adverse drug event
567 reporting in administrative data from emergency departments: a validation study. *BMC Health Serv*
568 *Res* [Internet]. 2013 [cited 2019 Jan 23];13. Available from:
569 <https://bmchealthservres.biomedcentral.com/articles/10.1186/1472-6963-13-473>
- 570 25. Honigman B, Lee J, Rothschild J, Light P, Pulling RM, Yu T, Bates DW. Using computerized data
571 to identify adverse drug events in outpatients. *J Am Med Inform Assoc JAMIA.* 2001;8:254–266.
- 572 26. Field TS, Gurwitz JH, Harrold LR, Rothschild JM, Debellis K, Seger AC, Fish LS, Garber L,
573 Kelleher M, Bates DW. Strategies for Detecting Adverse Drug Events among Older Persons in the
574 Ambulatory Setting. *J Am Med Inform Assoc JAMIA.* 2004;11:492–498.
- 575 27. Ravn-Nielsen LV, Duckert M-L, Lund ML, Henriksen JP, Nielsen ML, Eriksen CS, Buck TC,
576 Pottegård A, Hansen MR, Hallas J. Effect of an In-Hospital Multifaceted Clinical Pharmacist
577 Intervention on the Risk of Readmission: A Randomized Clinical Trial. *JAMA Intern Med.*
578 2018;178:375–382.
- 579 28. Hanlon JT, Pieper CF, Hajjar ER, Sloane RJ, Lindblad CI, Ruby CM, Schmader KE. Incidence and
580 predictors of all and preventable adverse drug reactions in frail elderly persons after hospital stay. *J*
581 *Gerontol A Biol Sci Med Sci.* 2006;61:511–515.
- 582 29. Letrilliant L, Hanslik T, Biour M, Fagot JP, Guiguet M, Flahault A. Postdischarge adverse drug
583 reactions in primary care originating from hospital care in France: a nationwide prospective study.
584 *Drug Saf.* 2001;24:781–792.
- 585 30. Gray SL, Mahoney JE, Blough DK. Adverse drug events in elderly patients receiving home health
586 services following hospital discharge. *Ann Pharmacother.* 1999;33:1147–1153.
- 587 31. Marusic S, Sicaja M, Obreli Neto PR, Franic M, Marinovic I, Bacic-Vrca V. Adverse drug reactions
588 in elderly patients following discharge from an internal medicine clinic. *Int J Clin Pharmacol Ther.*
589 2014;52:906–913.
- 590 32. Aubert CE, Rodondi N, Netzer S, Dalleur O, Spinewine A, Maanen CD, Knol W, O'Mahony D,
591 Aujesky D, Donzé J. Predictors of 1-year drug-related admissions in older multimorbid hospitalized
592 adults. *J Am Geriatr Soc* [Internet]. [cited 2022 Jan 27];n/a. Available from:
593 <https://onlinelibrary.wiley.com/doi/abs/10.1111/jgs.17667>
594

First hospital episode in Ontario between March 1 2016 and February 28 2017
n= 837, 655 patients

Exclusions

N= 554,064 patients younger than 65

N=10,720 patients admitted from acute care

N= 71, 086 patients did not have medications dispensed in 30-days post discharge prior to another healthcare encounter

N=3,928 patients with dispensed medications which did not have corresponding ATC code

N=9,525 patients without at least one medication dispensed in class with prevalence of $\geq 1\%$ in cohort

N=188,354 patients 66 years of age and older discharged home or to long term care with eligible dispensed medications in the 30-days following hospital discharge prior to another healthcare encounter

Table 1. Patient characteristics overall and according to cluster

Demographics	Overall (n=188,354)	Cluster 1 Cardio (n=25,995)	Cluster 2 Respiratory (n=47,737)	Cluster 3 Complex care needs (n=22,147)	Cluster 4 Cardio- vascular and metabolic (n=28,924)	Cluster 5 Infection (n=17,867)	Cluster 6 Surgical (n=45,684)
Age, median (IQR)	77 (71-84)	77 (71-84)	78 (71-84)	81 (74-88)	81 (74-87)	75 (70-81)	73 (69-79)
66-75	83,885 (44.5)	11,275 (43.4)	19,583 (41.0)	6,711 (30.3)	8,503 (29.4)	9,261 (51.8)	28,552 (62.5)
76-85	61,692 (32.8)	8,801 (33.9)	16,291 (34.1)	7,272 (32.8)	10,579 (36.6)	5,845 (32.7)	12,904 (28.3)
85+	42,777 (22.7)	5,919 (22.8)	11,863 (24.9)	8,164 (36.9)	9,842 (34.0)	2,761 (15.5)	4,228 (9.3)
Sex							
Male	88,717 (47.1)	14,032 (54.0)	22,919 (48.0)	7,607 (34.4)	13,050 (45.1)	10,424 (58.3)	20,685 (45.3)
Female	99,637 (52.9)	11,963 (46.0)	24,818 (52.0)	14,540 (65.7)	15,874 (54.9)	7,443 (41.7)	24,999 (54.7)
Health services 1-year prior to admission							
Hospitalizations, mean (SD)	0.3 (0.7)	0.2 (0.6)	0.3 (0.8)	0.4 (0.9)	0.5 (0.9)	0.3 (0.7)	0.2 (0.5)
0	153,601 (81.6)	22,002 (84.6)	38,747 (81.2)	16,774 (75.7)	21,174 (73.2)	14,826 (83.0)	40,078 (87.3)
1	23,792 (12.6)	2,937 (11.3)	6,011 (12.6)	3,497 (15.8)	4,821 (16.7)	2,117 (11.9)	4,409 (9.7)
2	6,854 (3.6)	702 (2.7)	1,868 (3.9)	1,149 (5.2)	1,714 (5.9)	582 (3.3)	839 (1.8)
3	2,342 (1.2)	214 (0.8)	615 (1.3)	424 (1.9)	662 (2.3)	194 (1.1)	233 (0.5)
4+	1,765 (0.9)	140 (0.5)	4 (1.0)	303 (1.4)	553 (1.9)	148 (0.8)	125 (0.3)
Emergency department visits, median (IQR)	2 (1-3)	2 (1-3)	2 (1-4)	2 (1-4)	2 (1-4)	2 (1-4)	1 (0-2)
0	20,205 (10.7)	1,327 (5.1)	1,584 (3.3)	768 (3.5)	886 (3.1)	1,013 (5.7)	14,628 (32.0)
1	61,425 (32.6)	10,785 (41.5)	15,836 (33.2)	6,867 (31.0)	8,893 (30.8)	5,655 (31.7)	13,389 (29.3)
2	38,629 (20.5)	5,839 (22.5)	10,489 (22.0)	4,924 (22.2)	6,346 (21.9)	3,832 (21.5)	7,199 (15.8)
3	23,781 (12.6)	3,362 (12.9)	6,689 (14.0)	3,259 (14.7)	4,171 (14.4)	2,396 (13.4)	3,904 (8.6)
4	14,099 (7.5)	1,706 (6.6)	3,946 (8.3)	2,073 (9.4)	2,819 (9.8)	1,440 (8.1)	2,115 (2.6)
5	8,387 (4.5)	974 (3.8)	2,439 (5.1)	1,226 (5.5)	1,685 (5.8)	893 (5.0)	1,170 (2.6)
6+	21,828 (11.6)	2,002 (7.7)	6,754 (14.2)	3,030 (13.7)	4,124 (14.3)	2,638 (14.8)	3,280 (7.2)
Distinct medications dispensed, median (IQR)	9 (6-13)	7 (5-11)	9 (6-13)	11 (8-15)	13 (9-17)	8 (5-12)	7 (4-10)
0	3,838 (2.0)	893 (3.4)	906 (1.9)	215 (1.0)	166 (0.6)	432 (2.4)	1,226 (2.7)
1-3	18,830 (10.0)	3,507 (13.5)	4,529 (9.5)	678 (3.1)	415 (1.4)	2,201 (12.3)	7,500 (16.4)
4-6	36,480 (19.4)	6,233 (24.0)	9,662 (20.2)	2,721 (12.3)	1,930 (6.7)	3,842 (21.5)	12,092 (26.5)
7-9	42,226 (22.4)	6,584 (25.3)	11,090 (23.2)	4,850 (21.9)	4,842 (16.7)	4,050 (22.7)	10,810 (23.7)
10-12	35,485 (18.8)	4,488 (17.3)	9,212 (19.3)	4,895 (22.1)	6,581 (22.8)	3,212 (18.0)	7,097 (15.5)

13-15	24,237 (12.9)	2,427 (9.3)	5,986 (12.5)	3,898 (17.6)	6,031 (20.9)	2,037 (11.4)	3,858 (8.4)
16+	27,258 (14.5)	1,863 (7.2)	6,352 (13.3)	4,890 (22.1)	8,959 (31.0)	2,093 (11.7)	3,101 (6.8)
Chronic Conditions							
Acute myocardial infarction	9,082 (4.8)	4,048 (15.6)	1,390 (2.9)	412 (1.9)	2,335 (8.1)	248 (1.4)	649 (1.4)
Arrhythmia	31,438 (16.7)	7,165 (27.6)	8,048 (16.9)	2,392 (10.8)	6,732 (23.3)	2,162 (12.1)	4,939 (10.8)
Heart failure	25,163 (13.4)	5,315 (20.5)	6,527 (13.7)	2,013 (9.1)	7,990 (27.6)	1,329 (7.4)	1,989 (4.4)
Coronary artery syndrome	36,460 (19.4)	8,854 (34.1)	7,903 (16.6)	2,324 (10.5)	7,775 (26.9)	2,548 (14.3)	7,056 (15.5)
Hypertension	64,884 (34.5)	9,742 (37.5)	15,468 (32.4)	5,630 (25.4)	9,531 (33.0)	5,908 (33.1)	18,605 (40.7)
Stroke	13,757 (7.3)	3,322 (12.8)	3,113 (6.5)	1,855 (8.4)	3,201 (11.1)	573 (3.2)	1,693 (3.7)
Cancer	60,711 (32.3)	6,909 (26.6)	15,974 (33.5)	5,840 (26.4)	7,172 (24.8)	7,324 (41.0)	17,492 (38.3)
Diabetes	49,296 (26.2)	7,028 (27.0)	12,004 (25.2)	3,920 (17.7)	12,257 (42.4)	4,472 (25.0)	9,615 (21.1)
Chronic obstructive pulmonary disease	22,586 (12.0)	1,866 (7.2)	8,066 (16.9)	2,959 (13.4)	4,139 (14.3)	2,774 (15.5)	2,782 (6.1)
Asthma	9,450 (5.0)	929 (3.6)	2,996 (6.3)	944 (4.3)	1,511 (5.2)	1,073 (6.0)	1,997 (4.4)
Dementia	24,366 (12.9)	1,951 (7.5)	5,763 (12.1)	7,502 (33.9)	5,804 (20.1)	1,152 (6.5)	2,194 (4.8)
Mental health disorders	15,778 (8.4)	1,626 (6.3)	3,959 (8.3)	2,985 (13.5)	2,694 (9.3)	1,270 (7.1)	3,244 (7.1)
Mood and anxiety disorders	31,411 (16.7)	3,119 (12.0)	7,905 (16.6)	6,162 (27.8)	5,180 (17.9)	2,493 (14.0)	6,552 (14.3)
Osteoporosis	7,752 (4.1)	827 (3.2)	2,003 (4.2)	992 (4.5)	929 (3.2)	713 (4.0)	2,288 (5.0)
Osteoarthritis	47,504 (25.2)	4,270 (16.4)	7,225 (15.1)	4,354 (19.7)	5,081 (17.6)	2,708 (15.2)	23,866 (52.2)
Arthritis	30,588 (16.2)	3,190 (12.3)	6,487 (13.6)	3,000 (13.6)	4,003 (13.8)	2,526 (14.1)	11,382 (24.9)
Rheumatoid arthritis	5,682 (3.0)	259 (2.0)	1,377 (2.9)	717 (3.2)	749 (2.6)	466 (2.6)	1,844 (4.0)
Renal disease	17,811 (9.5)	2,337 (9.0)	5,328 (11.2)	1,708 (7.7)	4,646 (16.1)	1,539 (8.6)	2,253 (4.9)
Liver disease	2,002 (1.1)	167 (0.6)	750 (1.6)	204 (0.9)	333 (1.2)	195 (1.1)	353 (0.8)
Number of Chronic Conditions, Median (IQR)	2 (1-3)	3 (2-3)	2 (1-3)	2 (1-3)	3 (2-4)	2 (1-3)	2 (1-3)
0	11,351 (6.0)	990 (3.8)	3,593 (7.5)	1,662 (7.5)	1,023 (3.5)	1,741 (9.7)	2,343 (5.1)
1	39,302 (20.9)	4,654 (17.9)	10,787 (22.6)	5,375 (24.3)	4,266 (14.8)	4,623 (25.9)	9,597 (21.0)
2	52,236 (27.7)	7,163 (27.6)	12,915 (27.1)	5,869 (26.5)	6,739 (23.3)	5,136 (28.8)	14,414 (31.6)
3	41,707 (22.1)	6,346 (24.4)	10,028 (21.0)	4,539 (20.5)	6,589 (22.8)	3,352 (18.8)	10,853 (23.8)
4	24,319 (12.9)	3,911 (15.1)	5,740 (12.0)	2,566 (11.6)	4,954 (17.1)	1,773 (9.9)	5,375 (11.8)
5	11,745 (6.2)	1,823 (7.0)	2,835 (5.9)	1,311 (5.9)	2,910 (10.1)	768 (4.3)	2,098 (4.6)
6+	7,693 (4.1)	1,108 (4.3)	1,839 (3.9)	825 (3.7)	2,443 (8.5)	474 (2.7)	1,004 (2.2)
Index Admission Characteristics							
Institution admitted from							
Community, no home care	157,729 (83.7)	22,348 (86.0)	41,036 (86.0)	13,847 (62.5)	21,188 (73.4)	16,286 (91.2)	43,024 (94.2)
Community, home care	793 (0.4)	70 (0.3)	227 (0.5)	174 (0.8)	190 (0.7)	56 (0.3)	76 (0.2)
Long term care	20,326 (10.8)	1,330 (5.1)	3,806 (8.0)	7,102 (32.1)	6,118 (21.2)	602 (3.4)	1,368 (3.0)

Ambulatory care	9,166 (4.9)	2,214 (8.5)	2,582 (5.4)	923 (4.2)	1,345 (4.7)	903 (5.1)	1,199 (2.6)
Unclassified	340 (0.2)	33 (0.1)	86 (0.2)	101 (0.5)	83 (0.3)	20 (0.1)	17 (-)
Reason for admission (Most responsible diagnosis)							
Infection	6,054 (3.2)	455 (1.8)	2,103 (4.4)	1,001 (4.5)	1,126 (3.9)	1,021 (5.7)	348 (0.8)
Neoplasm	14,031 (7.5)	667 (2.3)	3,669 (7.7)	1,102 (5.0)	874 (3.0)	1,970 (11.0)	5,749 (12.6)
Endocrine	4,984 (2.7)	488 (1.9)	1,871 (3.9)	614 (2.8)	1,125 (3.9)	287 (1.6)	599 (1.3)
Mental Health	4,623 (2.5)	328 (1.3)	1,350 (2.8)	1,626 (7.3)	921 (3.2)	106 (0.6)	292 (0.6)
Nervous System	3,292 (1.8)	637 (2.5)	993 (2.1)	741 (3.4)	513 (1.8)	58 (0.3)	350 (0.8)
Eye	141 (0.1)	28 (0.1)	49 (0.1)	14 (0.1)	13 (-)	21 (0.1)	16 (-)
Ear	448 (0.2)	66 (0.3)	189 (0.4)	44 (0.2)	70 (0.2)	32 (0.2)	47 (0.1)
Circulatory	37,963 (20.2)	15,403 (59.3)	7,335 (15.4)	1,943 (8.8)	8,762 (30.3)	516 (2.9)	4,004 (8.8)
Respiratory	23,255 (12.4)	1,189 (4.6)	9,156 (19.2)	3,469 (15.7)	4,305 (14.9)	4,347 (24.3)	789 (1.7)
Digestive	17,820 (9.5)	1,339 (5.2)	6,311 (13.2)	1,921 (8.7)	1,924 (6.7)	2,764 (15.5)	3,561 (7.8)
Skin	2,060 (1.1)	96 (0.4)	600 (1.3)	344 (1.6)	373 (1.3)	513 (2.9)	134 (0.3)
Musculoskeletal	28,406 (15.1)	1,188 (4.6)	1,905 (4.0)	1,823 (8.2)	1,703 (5.9)	452 (2.5)	21,335 (46.7)
Genitourinary	12,396 (6.6)	790 (3.0)	3,349 (7.0)	1,666 (7.5)	1,936 (6.7)	3,454 (19.3)	1,201 (2.6)
Congenital	106 (0.1)	24 (0.1)	19 (-)	9 (-)	11 (-)	7 (-)	36 (0.1)
Injury	15,414 (8.2)	1,126 (4.3)	2,911 (6.1)	3,279 (14.8)	2,471 (8.5)	850 (4.8)	4,777 (10.5)
Health services	4,274 (2.3)	487 (1.9)	1,081 (2.3)	597 (2.7)	479 (1.7)	380 (2.1)	1,250 (2.7)
Unspecified	11,187 (5.9)	1,517 (5.8)	4,035 (8.6)	1,732 (7.8)	2,011 (7.0)	827 (4.6)	1,063 (2.3)
Total LOS, median (IQR)	4 (2-8)	4 (2-8)	4 (2-8)	6 (3-13)	6 (3-10)	3 (2-5)	3 (2-5)
Main Patient Service							
General Practice	2,228 (1.2)	-	-	497 (2.2)	425 (1.5)	212 (1.2)	-
General Medicine	80,133 (42.5)	10,944 (42.1)	26,128 (54.7)	13,083 (59.1)	15,620 (54.0)	7,736 (43.3)	6,622 (14.5)
Cardiology	15,882 (8.4)	7,335 (28.2)	3,174 (6.7)	452 (2.0)	3,369 (11.7)	-	1,386 (3.0)
Gastro-Enterology	4,949 (2.6)	385 (1.5)	2,068 (4.3)	567 (2.6)	701 (2.4)	621 (3.5)	607 (1.3)
Nephrology	1,461 (0.8)	-	554 (1.2)	-	367 (1.3)	-	-
Neurology	2,877 (1.5)	985 (3.8)	662 (1.4)	353 (1.6)	553 (1.9)	-	-
Respirology	6,706 (3.6)	257 (1.4)	2,729 (5.7)	916 (4.1)	1,254 (4.3)	1,170 (6.6)	-
General Surgery	19,048 (10.1)	1,218 (4.7)	3,728 (7.8)	1,323 (6.0)	1,373 (4.8)	2,371 (13.3)	-
Cardio Surgery	5,878 (3.1)	2,017 (7.8)	771 (1.6)	244 (1.1)	1,374 (4.8)	-	1,313 (2.9)
Neurosurgery	1,703 (0.9)	-	534 (1.1)	-	-	-	750 (1.6)
Orthopaedic Surgery	27,229 (14.5)	1,267 (4.9)	1,552 (3.3)	2,282 (10.3)	1,862 (6.4)	452 (2.5)	19,814 (43.4)
Thoracic Surgery	1,147 (0.6)	-	-	-	-	-	687 (1.5)
Traumatology	1,992 (1.1)	-	-	458 (2.1)	228 (1.2)	-	571 (1.3)
Urology	8,315 (4.4)	372 (1.4)	1,617 (3.4)	529 (2.4)	692 (2.4)	-	1,737 (3.8)

Otolaryngology	1,603 (0.9)	-	-	-	-	-	389 (2.2)	471 (1.0)
Medical Oncology	3,755 (2.0)	-	1,188 (2.5)	353 (1.6)	-	-	504 (2.8)	1,344 (2.9)
Other	5,440 (2.9)	396 (1.5)	1,632 (3.4)	1,068 (4.8)	833 (2.9)	833 (2.9)	449 (2.5)	1,062 (2.3)
Charlson Comorbidity Score, mean (SD)	1.5 (1.6)	1.5 (1.6)	1.6 (2.0)	1.6 (1.9)	2.1 (1.7)	2.1 (1.7)	1.2 (1.7)	1.0 (1.8)
Discharge disposition								
Long term or continuing care	25,297 (13.4)	2,149 (8.3)	4,948 (10.4)	8,006 (36.2)	7,260 (25.1)	332 (1.9)	332 (1.9)	2,602 (5.7)
Home with support services	72,943 (38.7)	8,048 (31.0)	17,804 (37.3)	9,599 (43.3)	12,648 (43.7)	5,623 (31.5)	5,623 (31.5)	19,331 (42.1)
Home, no support services	90,114 (47.8)	15,798 (60.8)	24,985 (52.3)	4,542 (20.5)	9,016 (31.2)	11,912 (66.7)	11,912 (66.7)	23,861 (52.2)
Distinct medications dispensed 30 days post discharge, median (IQR)	3 (2-6)	4 (3-5)	2 (1-4)	7 (5-9)	9 (7-11)	2 (1-2)	2 (1-2)	2 (1-3)
1	39,264 (20.9)	1,125 (4.3)	15,314 (32.1)	0 (-)	0 (-)	7,912 (44.3)	7,912 (44.3)	14,913 (32.6)
2	38,690 (20.5)	5,115 (19.7)	10,991 (23.0)	0 (-)	0 (-)	6,376 (35.7)	6,376 (35.7)	16,208 (35.5)
3	26,461 (14.1)	5,712 (22.0)	8,950 (18.8)	527 (2.4)	0 (-)	2,235 (12.5)	2,235 (12.5)	9,037 (19.8)
4	18,599 (9.9)	5,892 (22.7)	5,852 (12.3)	2,095 (9.5)	153 (0.5)	941 (5.3)	941 (5.3)	3,666 (8.0)
5	14,643 (7.8)	4,476 (17.2)	3,428 (7.2)	3,491 (15.8)	1,586 (5.5)	297 (1.7)	297 (1.7)	1,365 (3.0)
6	11,781 (6.3)	2,375 (9.1)	1,782 (3.7)	3,760 (17.0)	3,394 (11.7)	82 (0.5)	82 (0.5)	387 (0.9)
7	9,785 (5.2)	916 (3.5)	846 (1.8)	3,396 (15.3)	4,522 (15.6)	22 (0.1)	22 (0.1)	83 (0.2)
8	7,997 (4.3)	289 (1.1)	342 (0.7)	2,751 (12.4)	4,593 (15.9)	2 (-)	2 (-)	20 (-)
9	6,353 (3.6)	76 (0.3)	149 (0.3)	2,072 (9.4)	4,051 (14.0)	0 (-)	0 (-)	5 (-)
10+	14,781 (7.9)	19 (0.1)	82 (0.2)	4,055 (18.3)	10,625 (36.7)	0 (-)	0 (-)	0 (-)
New distinct medications dispensed 30 days post discharge, median (IQR)	1 (1-2)	2 (1-3)	1 (0-2)	2 (1-3)	2 (1-3)	1 (1-2)	1 (1-2)	2 (1-2)
0	38,512 (20.5)	5,138 (19.8)	14,801 (31.0)	4,648 (21.0)	6,503 (22.5)	2,359 (13.2)	2,359 (13.2)	5,063 (11.1)
1	61,728 (32.8)	5,848 (22.5)	17,589 (36.9)	5,363 (24.2)	6,592 (22.8)	8,969 (50.2)	8,969 (50.2)	17,367 (38.0)
2	44,305 (23.5)	6,097 (23.5)	8,708 (18.2)	4,546 (20.5)	5,342 (18.5)	4,840 (27.1)	4,840 (27.1)	14,772 (32.3)
3	22,571 (12.0)	4,182 (16.1)	4,043 (8.5)	3,208 (14.5)	3,814 (13.2)	1,247 (7.0)	1,247 (7.0)	6,077 (13.3)
4	11,157 (5.9)	2,659 (10.2)	1,669 (3.5)	2,001 (9.0)	2,582 (8.9)	363 (2.0)	363 (2.0)	1,883 (4.1)
5+	10,081 (5.4)	2,071 (8.0)	927 (1.9)	2,381 (10.8)	4,091 (14.1)	89 (0.5)	89 (0.5)	522 (1.1)

Table 2. Prevalence of dispensed medication classes and most common ingredients in class

Dispensed Medication Classes	N (%)¹	N new (%)	Most common medications in the class overall (%)²
A02 Drugs for Acid Related Disorders	45,252 (24.0)	15,032 (8.0)	pantoprazole (64%), rabeprazole (13%), lansoprazole (16%)
A03 Drugs for Functional Gastrointestinal Disorders	3,869 (2.1)	1,457 (0.8)	domperidone (83%)
A06 Drugs for Constipation	31,048 (16.5)	20,737 (11.0)	docusate sodium (48%), lactulose (46%)
A07 Antidiarrheals, Intestinal Anti-inflammatory/Anti-infective Agents	2,995 (1.6)	1,759 (0.9)	loperamide (43%), mesalazine (19%), nystatin (23%)
A10 Drugs Used in Diabetes	23,337 (12.4)	5,774 (3.1)	gliclazide (16%), metformin (42%), sitagliptin (13%)
B01 Antithrombotic Agents	56,203 (29.8)	37,591 (20.0)	warfarin (30%), clopidogrel (29%), rivaroxaban (17%)
B03 Antianemic Preparations	2,788 (1.5)	815 (0.4)	folic acid (93%)
C01 Cardiac Therapy	18,874 (10.0)	10,655 (5.7)	Nitroglycerin, oral and patch (32%), digoxin (48%), amiodarone (12%)
C02 Antihypertensives	2,893 (1.5)	1,230 (0.7)	hydralazine (55%), doxazosin (26%), clonidine (12%)
C03 Diuretics	36,355 (19.3)	11,802 (6.3)	furosemide (78%), hydrochlorothiazide (8%)
C07 Beta Blocking Agents	41,797 (22.2)	14,722 (7.8)	metoprolol (49%), bisoprolol (36%)
C08 Calcium Channel Blockers	29,850 (15.9)	9,258 (4.9)	amlodipine (75%), diltiazem (18%)
C09 Agents Acting on Renin-Angiotensin System	40,975 (21.8)	11,487 (6.1)	rampiril (32%), perindopril (28%), candesartan (7%)
C10 Cholesterol Lowering Agents	47,317 (25.1)	9,882 (5.3)	atorvastatin (53%), rosuvastatin (32%)
D01 Antifungals for Dermatological Use	3,425 (1.8)	1,989 (1.1)	clotrimazole, topical (83%)
D07 Corticosteroids, Dermatological Preparations	2,234 (1.2)	736 (0.4)	Betamethasone, topical (63%), mometasone, topical (11%)
G04 Urologicals	16,102 (8.6)	4,020 (2.1)	tamsulosin (41%), dutasteride (13%), finasteride (11%)
H02 Corticosteroids for Systemic Use	13,729 (7.3)	6,211 (3.3)	prednisone (84%), fludocortisone (7%), dexamethasone (6%)
H03 Thyroid Therapy	17,747 (9.4)	1,022 (0.5)	levothyroxine (99%)
J01 Antibacterials for Systemic Use	43,107 (22.9)	34,355 (18.2)	ciprofloxacin (15%), cefalexin (14%), amoxicillin & beta-lactamase inhibitor (14%), cefuroxime (11%)
J05 Antivirals for Systemic Use	1,808 (1.0)	1,319 (0.7)	oseltamivir (82%), valaciclovir (5%), valaciclovir (5%)
M01 Anti-inflammatory Products	5,580 (3.0)	3,185 (1.7)	celecoxib (38%), meloxicam (21%), naproxen (16%), ibuprofen (14%)
M04 Antigout Preparations	5,057 (2.7)	501 (0.3)	allopurinol (99%)
M05 Drugs for Treatment of Bone Diseases	7,867 (4.2)	1,248 (0.7)	risedronic acid (74%), alendronic acid & cholecalciferol (12%)
N02 Analgesics	75,579 (40.1)	53,572 (28.4)	hydromorphone (50%), oxycodone (29%), codeine & paracetamol (8%)
N03 Antiepileptics	17,386 (9.2)	4,839 (2.6)	gabapentin (28%), pregabalin (22%), phenytoin (16%)
N04 Anti-Parkinson Drugs	3,886 (2.1)	411 (0.2)	levodopa & decarboxylase inhibitor (69%), pramipexole (10%)

N05 Psycholeptics	18,879 (10.0)	6,559 (3.5)	quetiapine (31%), risperidone (19%), lorazepam (15%)
N06 Psychoanaleptics	32,555 (17.3)	6,288 (3.3)	trazodone (25%), escitalopram (14%), mirtazapine (11%), donepezil (11%)
P01 Antiprotozoals	4,513 (2.4)	3,723 (2.0)	metronidazole (80%), hydroxychloroquine (20%)
R03 Drugs for Obstructive Airway Diseases	24,520 (13.0)	11,549 (6.1)	salbutamol (41%), tiotropium bromide (16%), salmeterol & fluticasone (13%)
S01 Ophthalmologicals	5,894 (3.1)	1,272 (0.7)	latanoprost (21%), timolol, combinations (11%)

¹ % is of all patients

² % is of all medications dispensed in that class

Table 3. Association Between Patient Characteristics and Risk of Adverse Drug Events in 30-days Following Discharge

Patient Characteristics	Crude Risk of ADE (%)	Adjusted OR ADE (%)	Lower 95% CI for adjusted OR	Upper 95% CI for adjusted OR
Demographics				
Age				
66-75	5.7		<i>Reference</i>	
76-85	7.3	1.13	1.09	1.19
85+	8.0	1.19	1.13	1.26
Sex				
Male	6.7		<i>Reference</i>	
Female	6.8	1.02	0.99	1.06
Health services 1-year prior to admission				
Hospitalizations				
0	6.2		<i>Reference</i>	
1	7.9	1.00	0.94	1.06
2	10.3	1.08	0.99	1.18
3	12.7	1.22	1.07	1.39
4+	14.1	1.24	1.07	1.44
Emergency department visits				
0	3.0		<i>Reference</i>	
1	5.7	1.19	1.07	1.32
2	6.5	1.29	1.16	1.44
3	7.9	1.49	1.33	1.67
4	8.1	1.45	1.28	1.63
5	8.4	1.44	1.26	1.64
6+	10.6	1.69	1.50	1.90
Distinct medications dispensed				
0	4.7		<i>Reference</i>	
1-3	4.6	1.02	0.87	1.21
4-6	5.1	1.08	0.92	1.26
7-9	6.0	1.15	0.98	1.35
10-12	7.0	1.26	1.07	1.48
13-15	8.1	1.37	1.16	1.61
16+	10.2	1.55	1.31	1.83
Chronic Conditions				
Acute myocardial infarction	8.7	1.03	0.95	1.12
Arrhythmia	8.6	1.10	1.05	1.16
Heart failure	11.6	1.21	1.15	1.27
Coronary artery syndrome	7.4	0.96	0.91	1.01
Hypertension	6.7	1.03	0.99	1.07

Stroke	7.2	0.92	0.94	0.99
Cancer	6.9	0.96	0.92	1.00
Diabetes	7.6	0.97	0.92	1.01
Chronic obstructive pulmonary disease	7.9	0.99	0.94	1.05
Asthma	7.5	1.01	0.93	1.09
Dementia	7.8	1.01	0.95	1.07
Mental health disorders	7.2	0.99	0.92	1.05
Mood and anxiety disorders	7.4	1.02	0.98	1.08
Osteoporosis	6.4	0.98	0.89	1.08
Osteoarthritis	5.3	0.99	0.94	1.05
Arthritis	6.2	0.97	0.92	1.02
Rheumatoid arthritis	6.7	1.00	0.90	1.12
Renal disease	11.6	1.42	1.34	1.50
Liver disease	12.6	1.54	1.34	1.77
Index admission characteristics				
Institution admitted from				
Community, no home care	6.5		<i>Reference</i>	
Community, home care	7.9	0.91	0.70	1.18
Long term care	8.3	1.09	1.03	1.17
Ambulatory care	7.7	1.09	1.01	1.19
Unclassified	7.7	1.13	0.76	1.70
Acuity				
Not admitted from ED	4.2		<i>Reference</i>	
Admitted from the ED	7.7	1.23	1.14	1.33
Main Patient Service				
General Medicine	8.1		<i>Reference</i>	
General Practice	6.5	0.81	0.68	0.97
Cardiology	8.2	0.95	0.88	1.02
Gastro-Enterology	8.6	1.02	0.91	1.15
Nephrology	10.9	0.93	0.78	1.11
Neurology	6.5	0.91	0.77	1.07
Respirology	7.7	1.02	0.92	1.13
General Surgery	4.2	0.68	0.62	0.74
Cardio Surgery	6.9	1.06	0.94	1.20
Neurosurgery	5.2	0.98	0.78	1.23
Orthopaedic Surgery	3.6	0.84	0.75	0.94
Thoracic Surgery	6.0	0.89	0.69	1.15
Urology	4.2	0.60	0.53	0.68
Otolaryngology	3.9	0.64	0.49	0.83
Medical Oncology	8.7	0.95	0.83	1.09
Other	6.7	0.99	0.88	1.11
Reason for Admission*				
Circulatory	8.4		<i>Reference</i>	
Infection	6.8	1.00	0.90	1.11
Neoplasm	8.4	1.08	0.97	1.20
Endocrine	7.5	0.95	0.85	1.07

Mental Health	7.5	0.87	0.77	0.99
Nervous System	5.8	0.78	0.67	0.91
Eye	4.3	0.65	0.29	1.48
Ear	5.4	0.81	0.53	1.24
Respiratory	7.2	0.76	0.70	0.83
Digestive	6.9	0.98	0.90	1.07
Skin	8.3	0.91	0.77	1.08
Musculoskeletal	3.8	0.86	0.77	0.96
Genitourinary	7.5	1.04	0.95	1.15
Congenital	3.8	0.68	0.25	1.84
Injury	4.5	0.64	0.58	0.71
Health services	4.9	0.65	0.56	0.75
Unspecified	7.2	0.93	0.86	1.01
Total length of stay	-	1.01	1.01	1.02
Charlson Comorbidity Score	-	1.05	1.04	1.06
Post-discharge medications				
New Medications				
0	6.7		<i>Reference</i>	
1	6.7	1.14	1.08	1.21
2	6.2	1.16	1.09	1.22
3	6.8	1.23	1.15	1.32
4	7.5	1.31	1.20	1.42
5+	8.4	1.39	1.27	1.52
Medication Cluster ¹				
Cardiovascular	7.0	0.97	0.92	1.03
Respiratory	7.7	1.12	1.08	1.17
Complex care needs	6.6	0.82	0.77	0.87
Cardiovascular and metabolic	8.9	0.98	0.94	1.03
Infection	6.0	1.01	0.94	1.08
Surgical	4.6	1.02	0.97	1.08

¹ Reference is all other clusters (e.g., cardiovascular vs not)

Table A1. List of medication classes excluded from analysis

3 Digit ATC code	Class Name
A01	STOMATOLOGICAL PREPARATIONS
A05	BILE AND LIVER THERAPY
A09	DIGESTIVES, INCL. ENZYMES
A11	VITAMINS
A16	OTHER ALIMENTARY TRACT AND METABOLISM PRODUCTS
B02	ANTHEMORRHAGICS
B05	BLOOD SUBSTITUTES AND PERFUSION SOLUTIONS
C04	PERIPHERAL VASODILATORS
C05	VASOPROTECTIVES
D03	PREPARATIONS FOR TREATMENT OF WOUNDS AND ULCERS
D05	ANTIPSORIATICS
D06	ANTIBIOTICS AND CHEMOTHERAPEUTICS FOR DERMATOLOGICAL USE
D10	ANTI-ACNE PREPARATIONS
D11	OTHER DERMATOLOGICAL PREPARATIONS
G01	GYNECOLOGICAL ANTIINFECTIVES AND ANTISEPTICS
G02	OTHER GYNECOLOGICALS
G03	SEX HORMONES AND MODULATORS OF THE GENITAL SYSTEM
H01	PITUITARY AND HYPOTHALAMIC HORMONES AND ANALOGUES
H04	PANCREATIC HORMONES
H05	CALCIUM HOMEOSTASIS
J02	ANTIMYCOTICS FOR SYSTEMIC USE
J04	ANTIMYCOBACTERIALS
J07	VACCINES
L01	ANTINEOPLASTIC AGENTS
L02	ENDOCRINE THERAPY
L03	IMMUNOSTIMULANTS
L04	IMMUNOSUPPRESSANTS
M03	MUSCLE RELAXANTS
N07	OTHER NERVOUS SYSTEM DRUGS
P02	ANTHELMINTICS
P03	ECTOPARASITICIDES, INCL. SCABICIDES, INSECTICIDES AND REPELLENTS
R01	NASAL PREPARATIONS
R05	COUGH AND COLD PREPARATIONS
R06	ANTIHISTAMINES FOR SYSTEMIC USE
R07	OTHER RESPIRATORY SYSTEM PRODUCTS
S02	OTOLOGICALS

S03	OPHTHALMOLOGICAL AND OTOLOGICAL PREPARATIONS
V03	ALL OTHER THERAPEUTIC PRODUCTS
V07	ALL OTHER NON-THERAPEUTIC PRODUCTS

Table A2. IC9 and ICD 10 codes used to define pre-admission chronic conditions

Condition	ICD 9	ICD 10
Acute Myocardial Infarction (AMI)	410	I21, I22
Osteo- and other Arthritis:		
(A) Osteoarthritis	715	M15-M19
(B) Other Arthritis (includes Synovitis, Fibrositis, Connective tissue disorders, Ankylosing spondylitis, Gout Traumatic arthritis, pyogenic arthritis, Joint derangement, Dupuytren's contracture, Other MSK disorders)	727, 729, 710, 720, 274, 716, 711, 718, 728, 739	M00-M03, M07, M10, M11-M14, M20-M25, M30-M36, M65-M79
Arthritis - Rheumatoid arthritis	714	M05-M06
Asthma	493	J45
(all) Cancers	140-239	C00-C26, C30-C44, C45-C97
Cardiac Arrhythmia	427 (OHIP) / 427.3 (DAD)	I48.0, I48.1
Congestive Heart Failure	428	I500, I501, I509
Chronic Obstructive Pulmonary Disease	491, 492, 496	J41, J43, J44
Coronary syndrome (excluding AMI)	411-414	I20, I22-I25
Dementia	290, 331 (OHIP) / 046.1, 290.0, 290.1, 290.2, 290.3, 290.4, 294, 331.0, 331.1, 331.5, F331.82 (DAD)	F00, F01, F02, F03, G30
Diabetes	250	E08 - E13
Hypertension	401, 402, 403, 404, 405	I10, I11, I12, I13, I15
(Other) Mental Illnesses	291, 292, 295, 297, 298, 299, 301, 302, 303, 304, 305, 306, 307, 313, 314, 315, 319	F04, F050, F058, F059, F060, F061, F062, F063, F064, F07, F08, F10, F11, F12, F13, F14, F15, F16, F17, F18, F19, F20, F21, F22, F23, F24, F25, F26, F27, F28, F29, F340, F35, F36, F37, F430, F439, F453, F454, F458, F46, F47, F49, F50, F51, F52, F531, F538, F539, F54, F55, F56, F57, F58, F59, F60, F61, F62, F63, F64, F65, F66, F67, F681, F688, F69, F70, F71, F72, F73, F74, F75, F76, F77, F78, F79, F80, F81, F82, F83, F84, F85, F86, F87, F88, F89, F90, F91, F92, F931, F932, F933, F938, F939, F94, F95, F96, F97, F98
Mood, anxiety, depression and other nonpsychotic disorders	296, 300, 309, 311	F30, F31, F32, F33, F34 (excl. F34.0), F38, F39, F40, F41, F42, F43.1, F43.2, F43.8, F44, F45.0, F45.1, F45.2, F48, F53.0, F68.0, F93.0, F99
Osteoporosis	733	M81, M82
Renal failure	403, 404, 584, 585, 586, v451	N17, N18, N19, T82.4, Z49.2, Z99.2

Stroke (excluding transient ischemic attack) 430, 431, 432, 434, 436 I60-I64

Table A3. ICD 10 codes used to define adverse drug events (ADEs)

Code	Meaning
D52.1	Drug-induced folate deficiency anaemia
D59.0	Drug-induced autoimmune haemolytic anaemia
D59.2	Drug-induced nonautoimmune haemolytic anaemia
D61.1	Drug-induced aplastic anaemia due to chemotherapy
D68.3	Hemorrhagic disorder due to circulating anticoagulants
E06.4	Drug-induced thyroiditis
E16.0	Drug-induced hypoglycaemia without coma
E23.1	Drug-induced hypopituitarism
E24.2	Drug-induced Cushing's syndrome
E27.3	Drug-induced adrenocortical insufficiency
E66.1	Drug-induced obesity
G21.0	Malignant neuroleptic syndrome
G21.1	Other drug-induced secondary parkinsonism
G24.0	Drug-induced dystonia
G25.1	Drug-induced tremor
G25.4	Drug-induced chorea
G25.6	Drug-induced tics and other tics of organic origin
G44.4	Drug-induced headache, not elsewhere classified
G62.0	Drug-induced polyneuropathy
G72.0	Drug-induced myopathy
H26.3	Drug-induced cataract
H40.6	Glaucoma secondary to drugs
I95.2	Hypotension due to drugs
J70.2	Acute drug-induced interstitial lung disorders
J70.3	Chronic drug-induced interstitial lung disorders
J70.4	Drug-induced interstitial lung disorders, unspecified
K85.3	Drug-induced pancreatitis
L10.5	Drug-induced pemphigus
L43.2	Lichenoid drug reaction
L56.0	Drug phototoxic response
L56.1	Drug photoallergic response
L64.0	Drug-induced androgenic alopecia
M10.2	Drug-induced gout
M32.0	Drug-induced systemic lupus erythematosus
M80.4	Drug-induced osteoporosis with pathological fracture
M81.4	Drug-induced osteoporosis without pathological fracture
M83.5	Other drug-induced osteomalacia in adults
M87.1	Osteonecrosis due to drugs
N14.0	Analgesic nephropathy
O74.4	Toxic reaction to local anaesthesia during labour and delivery Fetus and newborn affected by maternal anaesthesia and analgesia in pregnancy, labour and delivery
P04.0	Fetus and newborn affected by other maternal medication
P04.1	Fetus and newborn affected by other maternal medication
P96.2	Withdrawal symptoms from therapeutic use of drugs in newborn
Q86.1	Fetal hydantoin syndrome

Q86.2	Dysmorphism due to warfarin
R50.2	Drug-induced fever
T88.3	Malignant hyperthermia due to anaesthesia
Y40-Y59	Adverse Drug reactions
Y40	Drugs, medicaments, and biological substances causing adverse effects in therapeutic use - systemic antibiotic
Y41	Drugs, medicaments, and biological substances causing adverse effects in therapeutic use - other systemic anti-infectives and antiparasitics
Y42	Drugs, medicaments, and biological substances causing adverse effects in therapeutic use - Hormones and their synthetic substitutes and antagonists, not elsewhere classified
Y42.7	Drugs, medicaments and biological substances causing adverse effects in therapeutic use - Hormones and their synthetic substitutes and antagonists, not elsewhere classified, Androgens and anabolic congener
Y43	Drugs, medicaments and biological substances causing adverse effects in therapeutic use - Primarily systemic agents
Y44	Drugs, medicaments and biological substances causing adverse effects in therapeutic use - Agents primarily affecting blood constituents
Y44.0	Drugs, medicaments and biological substances causing adverse effects in therapeutic use - Agents primarily affecting blood constituents, Iron preparations and other anti-hypochromic-anaemia preparations
Y44.2	Drugs, medicaments and biological substances causing adverse effects in therapeutic use - Agents primarily affecting blood constituents, Anticoagulants
Y45	Drugs, medicaments and biological substances causing adverse effects in therapeutic use - Analgesics, antipyretics and anti-inflammatory drugs
Y45.5	Drugs, medicaments and biological substances causing adverse effects in therapeutic use - Analgesics, antipyretics and anti-inflammatory drugs, 4-Aminophenol derivatives
Y46	Drugs, medicaments and biological substances causing adverse effects in therapeutic use - Antiepileptics and antiparkinsonism drugs
Y47	Drugs, medicaments and biological substances causing adverse effects in therapeutic use - Sedatives, hypnotics and antianxiety drugs
Y47.1	Drugs, medicaments and biological substances causing adverse effects in therapeutic use - Sedatives, hypnotics and antianxiety drugs, Benzodiazepines
Y48	Drugs, medicaments and biological substances causing adverse effects in therapeutic use - Anaesthetics and therapeutic gases
Y48.1	Drugs, medicaments and biological substances causing adverse effects in therapeutic use - Anaesthetics and therapeutic gases, Parenteral anaesthetics
Y48.2	Drugs, medicaments and biological substances causing adverse effects in therapeutic use - Anaesthetics and therapeutic gases, Other and unspecified general anaesthetics
Y48.3	Drugs, medicaments and biological substances causing adverse effects in therapeutic use - Anaesthetics and therapeutic gases, Local anaesthetics
Y48.4	Drugs, medicaments and biological substances causing adverse effects in therapeutic use - Anaesthetics and therapeutic gases, Anaesthetic, unspecified
Y49	Drugs, medicaments and biological substances causing adverse effects in therapeutic use - Psychotropic drugs, not elsewhere classified
Y50	Drugs, medicaments and biological substances causing adverse effects in therapeutic use - Central nervous system stimulants, not elsewhere classified
Y51	Drugs, medicaments and biological substances causing adverse effects in therapeutic use - Drugs primarily affecting the autonomic nervous system
Y52	Drugs, medicaments and biological substances causing adverse effects in therapeutic use - Agents primarily affecting the cardiovascular system
Y53	Drugs, medicaments and biological substances causing adverse effects in therapeutic use - Agents primarily affecting the gastrointestinal system
Y54	Drugs, medicaments and biological substances causing adverse effects in therapeutic use - Agents primarily affecting water-balance and mineral and uric acid metabolism

Y55	Drugs, medicaments and biological substances causing adverse effects in therapeutic use - Agents primarily acting on smooth and skeletal muscles and the respiratory system
Y55.1	Drugs, medicaments and biological substances causing adverse effects in therapeutic use - Agents primarily acting on smooth and skeletal muscles and the respiratory system, Skeletal muscle relaxants [neuromuscular blocking agents]
Y56	Drugs, medicaments and biological substances causing adverse effects in therapeutic use - Topical agents primarily affecting skin and mucous membrane and ophthalmological, otorhinolaryngological and dental drugs
Y57	Drugs, medicaments and biological substances causing adverse effects in therapeutic use -Other and unspecified drugs and medicaments
Y57.5	Drugs, medicaments and biological substances causing adverse effects in therapeutic use -Other and unspecified drugs and medicaments, X-ray contrast media
Y58	Drugs, medicaments and biological substances causing adverse effects in therapeutic use - Bacterial vaccines
Y59	Drugs, medicaments and biological substances causing adverse effects in therapeutic use - Other and unspecified vaccines and biological substances
Y88.0	Sequelae of adverse effects caused by drugs, medicaments and biological substances in therapeutic use
D64.2	Secondary sideroblastic anaemia due to drugs and toxins
E03.2	Hypothyroidism due to medicaments and other exogenous substances
F11	Mental and behavioural disorders due to use of opioids
F11.0	Mental and behavioural disorders due to use of opioids: Acute intoxication
F11.1	Mental and behavioural disorders due to use of opioids: Harmful use
F11.2	Mental and behavioural disorders due to use of opioids: Dependence syndrome
F11.3	Mental and behavioural disorders due to use of opioids: Withdrawal state
F11.4	Mental and behavioural disorders due to use of opioids: Withdrawal state with delirium
F11.5	Mental and behavioural disorders due to use of opioids: Psychotic disorder
F11.6	Mental and behavioural disorders due to use of opioids: Amnesic syndrome
F11.7	Mental and behavioural disorders due to use of opioids: Residual and late-onset psychotic disorder
F11.8	Mental and behavioural disorders due to use of opioids: Other mental and behavioural disorders
F11.9	Mental and behavioural disorders due to use of opioids: Unspecified mental and behavioural disorder
F13	Mental and behavioural disorders due to use of sedatives or hypnotics
F13.0	Mental and behavioural disorders due to use of sedatives or hypnotics: Acute intoxication
F13.1	Mental and behavioural disorders due to use of sedatives or hypnotics: Harmful use
F13.2	Mental and behavioural disorders due to use of sedatives or hypnotics: Dependence syndrome
F13.3	Mental and behavioural disorders due to use of sedatives or hypnotics: Withdrawal state
F13.4	Mental and behavioural disorders due to use of sedatives or hypnotics: Withdrawal state with delirium
F13.5	Mental and behavioural disorders due to use of sedatives or hypnotics: Psychotic disorder
F13.6	Mental and behavioural disorders due to use of sedatives or hypnotics: Amnesic syndrome
F13.7	Mental and behavioural disorders due to use of sedatives or hypnotics: Residual and late-onset psychiatric disorder
F13.8	Mental and behavioural disorders due to use of sedatives or hypnotics: Other mental and behavioural disorders
F13.9	Mental and behavioural disorders due to use of sedatives or hypnotics: Unspecified mental and behavioural disorder
F15.0	Mental and behavioural disorders due to use of other stimulants, including caffeine: Acute intoxication
F15.1	Mental and behavioural disorders due to use of other stimulants, including caffeine: Harmful use
F15.2	Mental and behavioural disorders due to use of other stimulants, including caffeine: Dependence syndrome

F15.3	Mental and behavioural disorders due to use of other stimulants, including caffeine: Withdrawal state
F15.4	Mental and behavioural disorders due to use of other stimulants, including caffeine: Withdrawal state with delirium
F15.5	Mental and behavioural disorders due to use of other stimulants, including caffeine: Psychotic disorder
F15.6	Mental and behavioural disorders due to use of other stimulants, including caffeine: Amnesic syndrome
F15.7	Mental and behavioural disorders due to use of other stimulants, including caffeine: Residual and late-onset psychotic disorder
F15.8	Mental and behavioural disorders due to use of other stimulants, including caffeine: Other mental and behavioural disorders
F15.9	Mental and behavioural disorders due to use of other stimulants, including caffeine: Unspecified mental and behavioural disorder
F19.0	Mental and behavioural disorders due to multiple drug use and use of other psychoactive substances: Acute intoxication
F19.1	Mental and behavioural disorders due to multiple drug use and use of other psychoactive substances: Harmful use
F19.2	Mental and behavioural disorders due to multiple drug use and use of other psychoactive substances: Dependence syndrome
F19.3	Mental and behavioural disorders due to multiple drug use and use of other psychoactive substances: Withdrawal state
F19.4	Mental and behavioural disorders due to multiple drug use and use of other psychoactive substances: Withdrawal state with delirium
F19.5	Mental and behavioural disorders due to multiple drug use and use of other psychoactive substances: Psychotic disorder
F19.6	Mental and behavioural disorders due to multiple drug use and use of other psychoactive substances: Amnesic syndrome
F19.7	Mental and behavioural disorders due to multiple drug use and use of other psychoactive substances: Residual and late-onset psychotic disorder
F19.8	Mental and behavioural disorders due to multiple drug use and use of other psychoactive substances: Other mental and behavioural disorders
F19.9	Mental and behavioural disorders due to multiple drug use and use of other psychoactive substances: Unspecified mental and behavioural disorder
G21.2	Secondary parkinsonism due to other external agents
I42.7	Cardiomyopathy due to drugs and other external agents
L23.3	Allergic contact dermatitis due to drugs in contact with skin
L24.4	Irritant contact dermatitis due to drugs in contact with skin
L25.1	Unspecified contact dermatitis due to drugs in contact with skin
L27	Dermatitis due to substances taken internally
L27.0	Generalized skin eruption due to drugs and medicaments
L27.1	Localized skin eruption due to drugs and medicaments
L27.8	Dermatitis due to other substances taken internally
L27.9	Dermatitis due to unspecified substance taken internally
M34.2	Systemic sclerosis induced by drugs and chemicals
N14.1	Nephropathy induced by other drugs, medicaments and biological substances
N14.2	Nephropathy induced by unspecified drug, medicament or biological substance
N14.3	Nephropathy induced by heavy metals
N14.4	Toxic nephropathy, not elsewhere classified
O35.5	Maternal care for (suspected) damage to fetus by drugs
P04.4	Fetus and newborn affected by maternal use of drugs of addiction
P58.4	Neonatal jaundice due to drugs or toxins transmitted from mother or given to newborn
P93	Reactions and intoxications due to drugs administered to fetus and newborn

P96.1	Neonatal withdrawal symptoms from maternal use of drugs of addiction
T78	Adverse effects, not elsewhere classified
T78.2	Anaphylactic shock, unspecified
T78.3	Angioneurotic oedema
T78.4	Allergy, unspecified
T78.8	Other adverse effects, not elsewhere classified
T78.9	Adverse effect, unspecified
T80.1	Vascular complications following infusion, transfusion and therapeutic injection
T80.2	Infections following infusion, transfusion and therapeutic injection
T80.3	ABO incompatibility reaction
T80.4	Rh incompatibility reaction
T80.5	Complications following infusion, transfusion and therapeutic injection: anaphylactic shock due to serum
T80.6	Complications following infusion, transfusion and therapeutic injection: other serum reactions
T80.8	Other complications following infusion, transfusion and therapeutic injection
T80.9	Unspecified complication following infusion, transfusion and therapeutic injection
T88.6	Anaphylactic shock due to adverse effect of correct drug or medicament properly administered
T88.7	Unspecified adverse event of drug or medicament
Y57.9	Drugs, medicaments and biological substances causing adverse effects in therapeutic use -Other and unspecified drugs and medicaments, Drug or medicament, unspecified
Y59.9	Vaccine or biological substance, unspecified
Z03.6	Observation for suspected toxic effect from ingested substance
	Poisoning by drugs, medicaments and biological substances: “premature, excessive, inappropriate or wrong medication, formulation or route” ⁹ -- overdose of these substances (accidental or not) - wrong substance given or taken in error
T36-T50	
T36	Poisoning by systemic antibiotics
T36.0	Penicillins
T36.1	Cefalosporins and other beta-lactam antibiotics
T36.2	Chloramphenicol group
T36.3	Macrolides
T36.4	Tetracyclines
T36.5	Aminoglycosides
T36.6	Rifamycins
T36.7	Antifungal antibiotics, systemically used
T36.8	Other systemic antibiotics
T36.9	Systemic antibiotic, unspecified
T37	Poisoning by other systemic anti-infectives and anti-parasitics
T37.0	Sulfonamides
T37.1	Antimycobacterial drugs
T37.2	Antimalarials and drugs acting on other blood protozoa
T37.3	Other antiprotozoal drugs
T37.4	Anthelmintics
T37.5	Antiviral drugs
T37.8	Other specified systemic anti-infectives and antiparasitics
T37.9	Systemic anti-infective and antiparasitic, unspecified
T38	Poisoning by hormones and their synthetic substitutes and antagonists, not elsewhere classified
T38.0	Glucocorticoids and synthetic analogues
T38.1	Thyroid hormones and substitutes
T38.2	Antithyroid drugs
T38.3	Insulin and oral hypoglycaemic [antidiabetic] drugs

T38.4	Oral contraceptives
T38.5	Other estrogens and progestogens
T38.6	Antigonadotrophins, antiestrogens, antiandrogens, not elsewhere classified
T38.7	Androgens and anabolic congeners
T38.8	Other and unspecified hormones and their synthetic substitutes
T38.9	Other and unspecified hormone antagonists
T39	Poisoning by nonopioid analgesics, antipyretics and antirheumatics
T39.0	Salicylates
T39.1	4-Aminophenol derivatives
T39.2	Pyrazolone derivatives
T39.3	Other nonsteroidal anti-inflammatory drugs [NSAID]
T39.4	Antirheumatics, not elsewhere classified
T39.8	Other nonopioid analgesics and antipyretics, not elsewhere classified
T39.9	Nonopioid analgesic, antipyretic and antirheumatic, unspecified
T40	Poisoning by narcotics and psychodysleptics
T40.0	Opium
T40.1	Heroin
T40.2	Poisoning by other opioids (includes morphine and codeine)
T40.3	Poisoning by Methadone
T40.4	Poisoning by other synthetic narcotics (buprenorphine, pethidine, destropropoxyphene etc.)
T40.5	Cocaine
T40.6	Poisoning by other and unspecified narcotics
T40.7	Cannabis (derivatives)
T40.8	Lysergide [LSD]
T40.9	Other and unspecified psychodysleptics [hallucinogens]
T41	Poisoning by anaesthetics and therapeutic gases
T41.0	Inhaled anaesthetics
T41.1	Intravenous anaesthetics
T41.2	Other and unspecified general anaesthetics
T41.3	Local anaesthetics
T41.4	Anaesthetic, unspecified
T41.5	Therapeutic gases
T42	Poisoning by antiepileptic, sedative-hypnotic and antiparkinsonism drugs
T42.0	Hydantoin derivatives
T42.1	Iminostilbenes
T42.2	Succinimides and oxazolidinediones
T42.3	Barbiturates
T42.4	Poisoning by benzodiazepines
T42.5	Mixed antiepileptics, not elsewhere classified
T42.6	Other antiepileptic and sedative-hypnotic drugs
T42.7	Antiepileptic and sedative-hypnotic drugs, unspecified
T42.8	Antiparkinsonism drugs and other central muscle-tone depressants
T43	Poisoning by psychotropic drugs, not elsewhere classified
T43.0	Poisoning by tricyclic and tetracyclic antidepressants
T43.1	Monoamine-oxidase-inhibitor antidepressants
T43.2	Poisoning by other and unspecified antidepressants
T43.3	Phenothiazine antipsychotics and neuroleptics
T43.4	Butyrophenone and thioxanthene neuroleptics
T43.5	Other and unspecified antipsychotics and neuroleptics

T43.6	Poisoning by psychostimulants with abuse potential
T43.8	Other psychotropic drugs, not elsewhere classified
T43.9	Psychotropic drug, unspecified
T44	Poisoning by drugs primarily affecting the autonomic nervous system
T44.0	Anticholinesterase agents
T44.1	Other parasympathomimetics [cholinergics]
T44.2	Ganglionic blocking drugs, not elsewhere classified
T44.3	Other parasympatholytics [anticholinergics and antimuscarinics] and spasmolytics, not elsewhere classified
T44.4	Predominantly alpha-adrenoreceptor agonists, not elsewhere classified
T44.5	Predominantly beta-adrenoreceptor agonists, not elsewhere classified
T44.6	Alpha-adrenoreceptor antagonists, not elsewhere classified
T44.7	Beta-adrenoreceptor antagonists, not elsewhere classified
T44.8	Centrally acting and adrenergic-neuron-blocking agents, not elsewhere classified
T44.9	Other and unspecified drugs primarily affecting the autonomic nervous system
T45	Poisoning by primarily systemic and haematological agents, not elsewhere classified
T45.0	Antiallergic and antiemetic drugs
T45.1	Antineoplastic and immunosuppressive drugs
T45.2	Vitamins, not elsewhere classified
T45.3	Enzymes, not elsewhere classified
T45.4	Iron and its compounds
T45.5	Anticoagulants
T45.6	Fibrinolysis-affecting drugs
T45.7	Anticoagulant antagonists, vitamin K and other coagulants
T45.8	Other primarily systemic and haematological agents
T45.9	Primarily systemic and haematological agent, unspecified
T46	Poisoning by agents primarily affecting the cardiovascular system
T46.0	Cardiac-stimulant glycosides and drugs of similar action
T46.1	Calcium-channel blockers
T46.2	Other antidysrhythmic drugs, not elsewhere classified
T46.3	Coronary vasodilators, not elsewhere classified
T46.4	Angiotensin-converting-enzyme inhibitors
T46.5	Other antihypertensive drugs, not elsewhere classified
T46.6	Antihyperlipidaemic and antiarteriosclerotic drugs
T46.7	Peripheral vasodilators
T46.8	Antivaricose drugs, including sclerosing agents
T46.9	Other and unspecified agents primarily affecting the cardiovascular system
T47	Poisoning by agents primarily affecting the gastrointestinal system
T47.0	Histamine H ₂ -receptor antagonists
T47.1	Other antacids and anti-gastric-secretion drugs
T47.2	Stimulant laxatives
T47.3	Saline and osmotic laxatives
T47.4	Other laxatives
T47.5	Digestants
T47.6	Antidiarrhoeal drugs
T47.7	Emetics
T47.8	Other agents primarily affecting the gastrointestinal system
T47.9	Agent primarily affecting the gastrointestinal system, unspecified
T48	Poisoning by agents primarily acting on smooth and skeletal muscles and the respiratory system
T48.0	Oxytocic drugs

T48.1	Skeletal muscle relaxants [neuromuscular blocking agents]
T48.2	Other and unspecified agents primarily acting on muscles
T48.3	Antitussives
T48.4	Expectorants
T48.5	Anti-common-cold drugs
T48.6	Antiasthmatics, not elsewhere classified
T48.7	Other and unspecified agents primarily acting on the respiratory system
T49.0	Local antifungal, anti-infective and anti-inflammatory drugs, not elsewhere classified
T49	Poisoning by topical agents primarily affecting skin and mucous membrane and by ophthalmological, otorhinolaryngological and dental drugs
T49.1	Antipruritics
T49.2	Local astringents and local detergents
T49.3	Emollients, demulcents and protectants
T49.4	Keratolytics, keratoplastics and other hair treatment drugs and preparations
T49.5	Ophthalmological drugs and preparations
T49.6	Otorhinolaryngological drugs and preparations
T49.7	Dental drugs, topically applied
T49.8	Other topical agents
T49.9	Topical agent, unspecified
T50	Poisoning by diuretics and other unspecified drugs, medicaments and biological substances
T50.0	Mineralocorticoids and their antagonists
T50.1	Loop [high-ceiling] diuretics
T50.2	Carbonic-anhydrase inhibitors, benzothiadiazides and other diuretics
T50.4	Drugs affecting uric acid metabolism
T50.6	Antidotes and chelating agents, not elsewhere classified
T50.7	Analeptics and opioid receptor antagonists
F55	Abuse of non-dependence-producing substances
T50.3	Electrolytic, caloric and water-balance agents
T50.5	Appetite depressants
T50.8	Diagnostic agents
T50.9	Poisoning: Other and unspecified drugs, medicaments and biological substances
T96	Sequelae of poisoning by drugs, medicaments and biological substances
X40	Accidental poisoning by and exposure to nonopioid analgesics, antipyretics, and antirheumatics including acetaminophen
X41	Accidental poisoning by and exposure to antiepileptic, sedative hypnotic, antiparkinsonism, psychotropic drugs NEC
X42	Accidental poisoning by and exposure to narcotics and psychodysleptics (hallucinogens) NEC (includes diamorphine (heroin), cocaine, codeine, lysergide (LSD), morphine, pethidine, narcotic NEC, hallucinogen NEC, hydrocodone, oxycodone (oxycontin) and fentanyl, among others)
X43	Accidental poisoning by and exposure to other drugs acting on the autonomic nervous system
X44	Accidental poisoning by and exposure to other and unspecified drugs, medicaments, and biological substances
X45.5	Adverse effects of therapeutic use of 4-aminophenol derivatives
Y10	Poisoning by and exposure to nonopioid analgesics, antipyretics and antirheumatics, undetermined intent
A04.7	Enterocolitis due to <i>Clostridium difficile</i>
E15	Nondiabetic hypoglycaemic coma
H91.0	Ototoxic hearing loss
K52.1	Toxic gastroenteritis and colitis
K71.0	Toxic liver disease with cholestasis
K71.1	Toxic liver disease with hepatic necrosis

K71.2	Toxic liver disease with acute hepatitis
K71.3	Toxic liver disease with chronic persistent hepatitis
K71.4	Toxic liver disease with chronic lobular hepatitis
K71.5	Toxic liver disease with chronic active hepatitis
K71.6	Toxic liver disease with hepatitis, not elsewhere classified
K71.7	Toxic liver disease with fibrosis and cirrhosis of liver
K71.8	Toxic liver disease with other disorders of liver
K71.9	Toxic liver disease, unspecified
L51	Erythema multiforme
L51.0	Nonbullous erythema multiforme
L51.1	Bullous erythema multiforme
L51.2	Toxic epidermal necrolysis [Lyell]
L51.8	Other erythema multiforme
L51.9	Erythema multiforme, unspecified
L56.2	Photocontact dermatitis [berloque dermatitis]
N99.0	Postprocedural renal failure
O74.2	Cardiac complications of anaesthesia during labour and delivery
O74.3	Central nervous system complications of anaesthesia during labour and delivery
Y63	Failure in dosage during surgical and medical care
Y65.1	Wrong fluid in infusion
Y69	Unspecified misadventure during surgical and medical care
D62	Acute posthaemorrhagic anaemia
D69.5	Secondary thrombocytopenia
D69.6	Thrombocytopenia, unspecified
D70	Agranulocytosis
F52	Sexual dysfunction, not caused by organic disorder or disease
F52.0	Lack or loss of sexual desire
F52.1	Sexual aversion and lack of sexual enjoyment
F52.2	Failure of genital response
F52.3	Orgasmic dysfunction
F52.4	Premature ejaculation
F52.5	Nonorganic vaginismus
F52.6	Nonorganic dyspareunia
F52.7	Excessive sexual drive
F52.8	Other sexual dysfunction, not caused by organic disorder or disease
F52.9	Unspecified sexual dysfunction, not caused by organic disorder or disease
H53	Visual disturbances
H53.0	Amblyopia ex anopsia
H53.1	Subjective visual disturbances
H53.2	Diplopia
H53.3	Other disorders of binocular vision
H53.4	Visual field defects
H53.5	Colour vision deficiencies
H53.6	Night blindness
H53.8	Other visual disturbances
H53.9	Visual disturbance, unspecified
I15.8	Other secondary hypertension
I15.9	Secondary hypertension, unspecified
J45.1	Nonallergic asthma

K25.0	Gastric ulcer: Acute with haemorrhage
K25.1	Gastric ulcer: Acute with perforation
K25.2	Gastric ulcer: Acute with both haemorrhage and perforation
K25.3	Gastric ulcer: Acute without haemorrhage or perforation
K25.4	Gastric ulcer: Chronic or unspecified with haemorrhage
K25.5	Gastric ulcer: Chronic or unspecified with perforation
K25.6	Gastric ulcer: Chronic or unspecified with both haemorrhage and perforation
K25.7	Gastric ulcer: Chronic without haemorrhage or perforation
K25.9	Gastric ulcer: Unspecified as acute or chronic, without haemorrhage or perforation
K26.0	Duodenal ulcer: Acute with haemorrhage
K26.1	Duodenal ulcer: Acute with perforation
K26.2	Duodenal ulcer: Acute with both haemorrhage and perforation
K26.3	Duodenal ulcer: Acute without haemorrhage or perforation
K26.4	Duodenal ulcer: Chronic or unspecified with haemorrhage
K26.5	Duodenal ulcer: Chronic or unspecified with perforation
K26.6	Duodenal ulcer: Chronic or unspecified with both haemorrhage and perforation
K26.7	Duodenal ulcer: Chronic without haemorrhage or perforation
K26.9	Duodenal ulcer: Unspecified as acute or chronic, without haemorrhage or perforation
K27.0	Peptic ulcer, site unspecified: Acute with haemorrhage
K27.1	Peptic ulcer, site unspecified: Acute with perforation
K27.2	Peptic ulcer, site unspecified: Acute with both haemorrhage and perforation
K27.3	Peptic ulcer, site unspecified: Acute without haemorrhage or perforation
K27.4	Peptic ulcer, site unspecified: Chronic or unspecified with haemorrhage
K27.5	Peptic ulcer, site unspecified: Chronic or unspecified with perforation
K27.6	Peptic ulcer, site unspecified: Chronic or unspecified with both haemorrhage and perforation
K27.7	Peptic ulcer, site unspecified: Chronic without haemorrhage or perforation
K27.9	Peptic ulcer, site unspecified: Unspecified as acute or chronic, without haemorrhage or perforation
K28	Gastrojejunal ulcer
K28.0	Gastrojejunal ulcer: Acute with haemorrhage
K28.1	Gastrojejunal ulcer: Acute with perforation
K28.2	Gastrojejunal ulcer: Acute with both haemorrhage and perforation
K28.3	Gastrojejunal ulcer: Acute without haemorrhage or perforation
K28.4	Gastrojejunal ulcer: Chronic or unspecified with haemorrhage
K28.5	Gastrojejunal ulcer: Chronic or unspecified with perforation
K28.6	Gastrojejunal ulcer: Chronic or unspecified with both haemorrhage and perforation
K28.7	Gastrojejunal ulcer: Chronic without haemorrhage or perforation
K28.9	Gastrojejunal ulcer: Unspecified as acute or chronic, without haemorrhage or perforation
K29.0	Acute haemorrhagic gastritis
K52.9	Non-infective gastroenteritis and colitis, unspecified
L29.0	Pruritus ani
L29.1	Pruritus scroti
L29.2	Pruritus vulvae
L29.3	Anogenital pruritus, unspecified
L29.8	Other pruritus
L29.9	Pruritus, unspecified
L50.0	Allergic urticaria
N17	Acute renal failure
N17.0	Acute renal failure with tubular necrosis
N17.1	Acute renal failure with acute cortical necrosis

N17.2	Acute renal failure with medullary necrosis
N17.8	Other acute renal failure
N17.9	Acute renal failure, unspecified
N18	Chronic kidney disease
N18.0	End-stage renal disease
N18.9	Chronic renal failure, unspecified
N19	Unspecified renal failure
O26.6	Liver disorders in pregnancy, childbirth and the puerperium
O74.6	Other complications of spinal and epidural anaesthesia during labour and delivery
T88.5	Other complications of anaesthesia
Y66	Non administration of surgical and medical care
D50.0	Cod
D61.9	Aplastic Anemia, unspecified
D65	Disseminated intravascular coagulation (defibrination syndrome)
D68.4	Acquired coagulation factor deficiency
D68.9	Coagulation defect, unspecified
D69	Purpura and other haemorrhagic conditions
D69.9	Hemorrhagic condition, unspecified
E86	Volume depletion
E87	Hyperosmolality and hypernatremia
E87.0	Hyperosmolality and hypernatraemia
E87.1	Hypo-osmolality and hyponatraemia
E87.2	Acidosis
E87.3	Alkalosis
E87.4	Mixed disorder of acid-base balance
E87.5	Hyperkalaemia
E87.6	Hypokalaemia
E87.7	Fluid overload
E87.8	Other disorders of electrolyte and fluid balance, not elsewhere classified
F05	Delirium, not induced by alcohol and other psychoactive substances
F15	Mental and behavioural disorders due to use of other stimulants, including caffeine
F16	Mental and behavioural disorders due to use of hallucinogens
F19	Mental and behavioural disorders due to multiple drug use and use of other psychoactive substances
G04.0	Acute disseminated encephalitis
G25.3	Myoclonus
G40.5	Special epileptic syndromes
G71.1	Myotonic disorders
G95.8	Other specified diseases of spinal cord
H11.3	Conjunctival hemorrhage
H21.0	Hyphaema
H31.3	Choroidal hemorrhage and rupture
H35.6	Retinal hemorrhage
H43.1	Vitreous hemorrhage
H92.2	Otorrhagia
I26.0	Pulmonary embolism with mention of acute cor pulmonale
I26.9	Pulmonary embolism without mention of acute cor pulmonale
I31.2	Haemopericardium, not elsewhere classified
I44	Atrioventricular and left bundle-branch block
I44.0	Atrioventricular block, first degree

I44.1	Atrioventricular block, second degree
I44.2	Atrioventricular block, complete
I44.3	Other and unspecified atrioventricular block
I44.4	Left anterior fascicular block
I44.5	Left posterior fascicular block
I44.6	Other and unspecified fascicular block
I44.7	Left bundle-branch block, unspecified
I45.8	Other specified conduction disorders
I46.1	Sudden cardiac death, so described
I47.2	Ventricular tachycardia
I60	Subarachnoid hemorrhage
I61	Intracerebral hemorrhage
I61.0	Intracerebral haemorrhage in hemisphere, subcortical
I61.1	Intracerebral haemorrhage in hemisphere, cortical
I61.2	Intracerebral haemorrhage in hemisphere, unspecified
I61.3	Intracerebral haemorrhage in brain stem
I61.4	Intracerebral haemorrhage in cerebellum
I61.5	Intracerebral haemorrhage, intraventricular
I61.6	Intracerebral haemorrhage, multiple localized
I61.8	Other intracerebral haemorrhage
I61.9	Intracerebral haemorrhage, unspecified
I62	Other nontraumatic intracranial hemorrhage
I80	Phlebitis and thrombophlebitis
I80.0	Phlebitis and thrombophlebitis of superficial vessels of lower extremities
I80.1	Phlebitis and thrombophlebitis of femoral vein
I80.2	Phlebitis and thrombophlebitis of other deep vessels of lower extremities
I80.3	Phlebitis and thrombophlebitis of lower extremities, unspecified
I80.8	Phlebitis and thrombophlebitis of other sites
I80.9	Phlebitis and thrombophlebitis of unspecified site
I95	Hypotension
J38.5	Laryngeal spasm
J45.0	Predominantly allergic asthma
J45.8	Mixed asthma
J81	Pulmonary oedema
K25	Gastric ulcer
K26	Duodenal ulcer
K27	Peptic ulcer, site unspecified
K62.5	Hemorrhage of anus and rectum
K66.1	Hemoperitoneum
K71	Toxic liver disease
K72.0	Acute and subacute hepatic failure
K72.9	Hepatic failure, unspecified
K76.7	Hepatorenal syndrome
K92.0	Hematemesis
K92.1	Melena
K92.2	Gastrointestinal haemorrhage, unspecified
L21	Seborrhoeic dermatitis
L21.0	Seborrhoea capitis
L21.1	Seborrhoeic infantile dermatitis

L26	Exfoliative dermatitis
L28	Lichen simplex chronicus and prurigo
L30	Other dermatitis
L52	Erythema nodosum
L71.0	Perioral dermatitis
M25.0	Hemarthrosis
M31.0	Hypersensitivity angiitis
M62.8	Other specified disorders of muscle
N42.1	Congestion and hemorrhage of prostate
N62	Hypertrophy of breast
N83.6	Hemosalpinx
N83.7	Hematoma of broad ligament
N85.7	Hematometra
N89.7	Hematocolpos
N95.3	States associated with artificial menopause
R00.1	Bradycardia, unspecified
R04.0	Epistaxis
R04.1	Hemorrhage from throat
R04.8	Hemorrhage from other sites in respiratory passage
R04.9	Hemorrhage from respiratory passage, unspecified
R06.0	Dyspnoea
R11	Nausea and vomiting
R17	Unspecified jaundice
R20	Disturbances of skin sensation
R21	Rash and other nonspecific skin eruption
R23	Other skin changes
R23.3	Spontaneous ecchymoses
R31	Unspecified hematuria
R34	Anuria and oliguria
R41.0	Disorientation, unspecified
R42	Dizziness and giddiness
R44.0	Auditory hallucinations
R44.1	Visual hallucinations
R44.2	Other hallucinations
R44.3	Hallucinations, unspecified
R51	Headache
R55	Syncope and collapse
R58	Haemorrhage, not elsewhere classified
R73.9	Hyperglycaemia, unspecified
R74.0	Elevation of levels of transaminase and lactic acid dehydrogenase [LDH]
S06.4	Epidural hemorrhage
T88.2	Shock due to anaesthesia
T88.8	Other specified complications of surgical and medical care, not elsewhere classified
T88.9	Complication of surgical and medical care, unspecified
Y12	Poisoning by and exposure to narcotics and psychodysleptics (hallucinogens) NEC, undetermined intent
Y14	Poisoning by and exposure to other and unspecified drugs, medicaments, and biological substances, undetermined intent
D68.8	Other specified coagulation defects
G25.0	Essential tremor

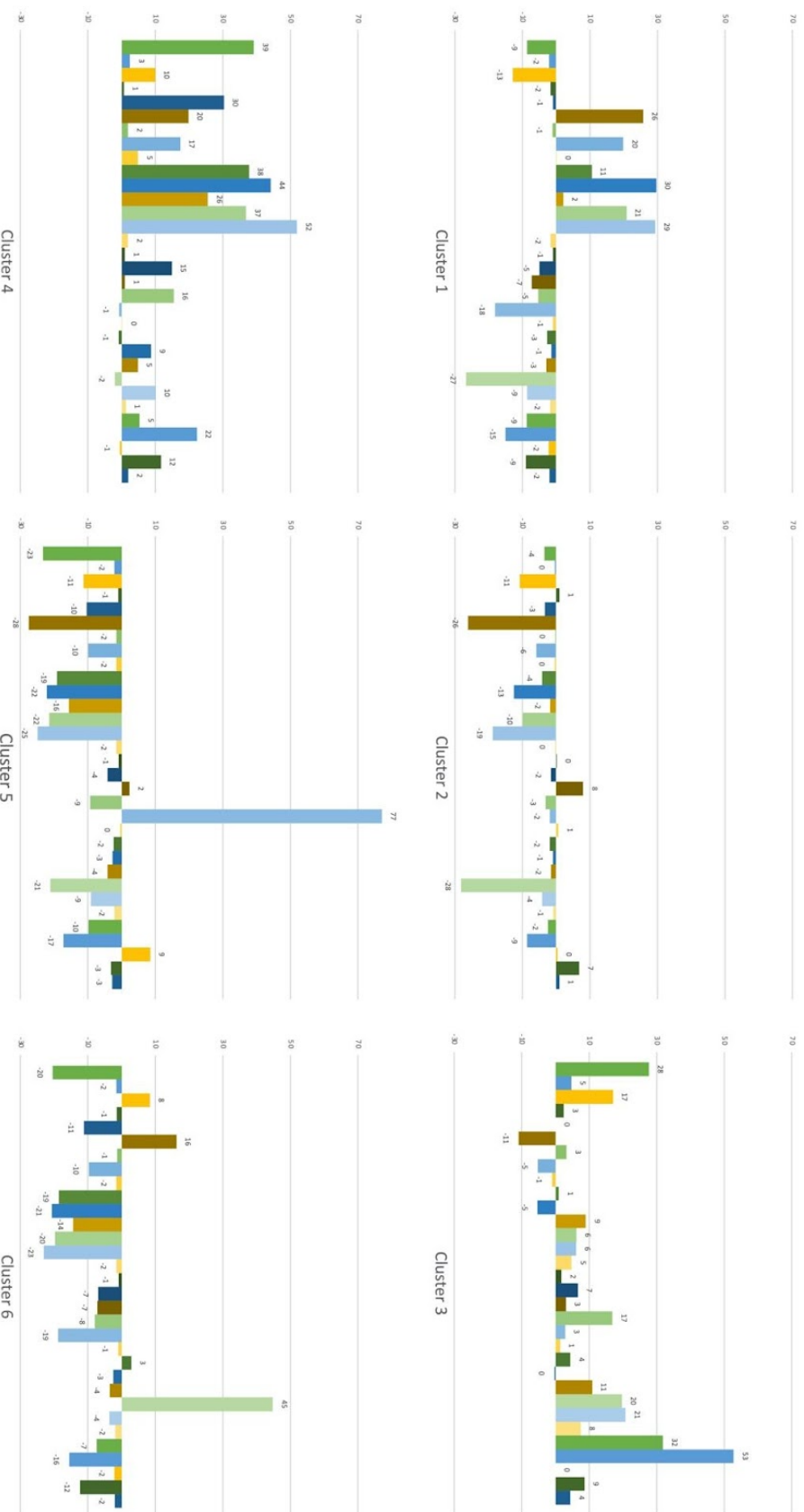
I49.0	Ventricular fibrillation and flutter
I85.0	Esophageal varices with bleeding
J46	Status asthmaticus
J80	Adult respiratory distress syndrome
K52.8	Other specified noninfective gastroenteritis and colitis
L20	Atopic dermatitis
L29	Pruritis
N92.1	Excessive and frequent menstruation with irregular cycle
N92.2	Excessive menstruation at puberty
N92.3	Ovulation bleeding
N92.4	Excessive bleeding in the premenopausal period
N92.6	Irregular menstruation, unspecified
N93	Other abnormal uterine and vaginal bleeding
N95.0	Postmenopausal bleeding
R44	Other symptoms and signs involving general sensations and perceptions
S06.5	Traumatic subdural hemorrhage
S06.6	Traumatic subarachnoid hemorrhage
S06.8	Other intracranial injuries
T80.7	Unspecified adverse drug effect
T81	Complications of procedures, not elsewhere classified
Y60.1	Unintentional cut, puncture, perforation or haemorrhage during during infusion or transfusion
Y60.2	Unintentional cut, puncture, perforation or haemorrhage during kidney dialysis or other perfusion
Y60.3	Unintentional cut, puncture, perforation or haemorrhage during injection or immunization
Y62.1	Failure of sterile precautions during infusion or transfusion
Y62.2	Failure of sterile precautions during kidney dialysis or other perfusion
Y62.3	Failure of sterile precautions during injection or immunization
Y64	Contaminated medical or biological substances
Y65.0	Mismatched blood used in transfusion
Z88	Personal history of allergy to drugs, medicaments, and biological substances
A80.0	Acute paralytic poliomyelitis, vaccine-associated
M02.2	Postimmunization arthropathy
T88.0	Infection following immunization
T88.1	Infection complications following immunization

Table A4. Medication Class Distributions Overall and According to Cluster

Medication Classes	Overall (n=188,354)		Cluster 1 (n=25,995)		Cluster 2 (n=47,737)		Cluster 3 (n=22,147)		Cluster 4 (n=28,924)		Cluster 5 (n=17,867)		Cluster 6 (n=45,684)		
	N	% pts	N	% pts cluster	N	% pts cluster	N	% pts cluster	N	% pts cluster	N	% pts cluster	N	% pts cluster	
A02 Drugs for Acid Related Disorders	45,252	24.0	4,010	15.4	9,780	20.5	11,446	51.7	18,266	63.2	40,4	119	0.7	1,631	3.6
A03 Drugs for Functional Gastrointestinal Disorders	3,869	2.1	1	(-)	813	1.7	1,498	6.8	1,338	4.6	34.6	8	(-)	211	0.5
A06 Drugs for Constipation	31,048	16.5	937	3.6	2,704	5.7	7,442	33.6	7,657	26.5	24.7	934	5.2	11,374	24.9
A07 Antidiarrheals, Intestinal Anti-inflammatory/Anti-infective Agents	2,995	1.6	9	(-)	1,240	2.6	907	4.1	650	2.3	21.7	101	0.6	88	0.2
A10 Drugs Used in Diabetes	23,337	12.4	2,950	11.4	4,350	9.1	2,756	12.4	12,342	42.7	52.9	383	2.1	556	1.2
B01 Antithrombotic Agents	56,203	29.8	14,449	55.6	1,790	3.7	4,193	18.9	14,342	49.6	25.5	418	2.3	21,051	46.1
B03 Antanemic Preparations	2,788	1.5	98	0.4	578	1.2	1,055	4.8	983	3.4	35.3	0	(-)	74	0.2
C01 Cardiac Therapy	18,874	10.0	7,771	29.9	1,959	4.1	1,071	4.8	7,928	27.4	42.0	9	0.1	136	0.3
C02 Antihypertensives	2,893	1.5	405	1.6	507	1.1	118	0.5	1,853	6.4	64.1	0	(-)	10	(-)
C03 Diuretics	36,355	19.3	7,759	29.9	7,238	15.2	4,503	20.3	16,506	57.1	45.4	25	0.1	324	0.7
C07 Beta Blocking Agents	41,797	22.2	13,487	51.9	4,648	9.7	3,732	16.9	19,209	66.4	46.0	22	0.1	699	1.5
C08 Calcium Channel Blockers	29,850	15.9	4,673	18.0	6,885	14.2	5,503	24.9	11,999	41.5	40.2	47	0.3	743	1.6
C09 Agents Acting on the Renin-Angiotensin System	40,975	21.8	11,089	42.7	5,700	11.9	6,195	28.0	16,968	58.7	41.4	55	0.3	968	2.1
C10 Lipid Modifying Agents	47,317	25.1	14,154	54.5	2,992	6.3	6,909	31.2	22,308	77.1	47.2	31	0.2	923	2.0
D01 Antifungals for Dermatological Use	3,425	1.8	43	0.2	697	1.5	1,471	6.6	1,078	3.7	31.5	54	0.3	82	0.2
D07 Corticosteroids, Dermatological Preparations	2,234	1.2	74	0.3	683	1.4	662	3.0	637	2.2	28.5	52	0.3	126	0.3
G04 Urologicals	16,102	8.6	936	3.6	3,410	7.1	3,388	15.3	6,789	23.5	42.2	790	4.4	789	1.7
H02 Corticosteroids for Systemic Use	13,729	7.3	12	0.1	7,283	15.3	2,302	10.4	2,393	8.3	17.4	1,708	9.6	31	0.1
H03 Thyroid Therapy	17,747	9.4	1,066	4.1	2,985	6.3	5,813	26.3	7,187	24.9	40.5	18	0.1	678	1.5

J01 Antibacterials for Systemic Use	43,107	22.9	1,256	4.8	2.9	10,030	21.0	23.3	5,720	25.8	13.3	6,377	22.1	14.8	17,867	100	41.5	1,857	4.1	4.3
J05 Antivirals for Systemic Use	1,808	1.0	21	0.1	1.2	795	1.7	44.0	525	2.4	28.9	351	1.2	19.4	106	0.6	5.9	12	(-)	0.7
M01 Anti-inflammatory and Antirheumatic Products	5,580	3.0	65	0.3	1.2	500	1.1	9.0	1,632	7.4	29.3	594	2.1	10.7	98	0.6	1.8	2,691	5.9	48.2
M04 Antigout Preparations	5,057	2.7	337	1.3	6.7	819	1.7	16.2	539	2.4	10.7	3,288	11.4	65.0	2	(-)	(-)	72	0.2	1.4
M05 Drugs for Treatment of Bone Diseases	7,867	4.2	325	1.3	4.1	1,307	2.7	16.6	3,336	15.1	42.4	2,592	9.0	33.0	7	(-)	0.1	300	0.7	3.8
N02 Analgesics	75,579	40.1	3,471	13.4	4.6	5,668	11.9	7.5	13,248	59.8	17.5	11,021	38.1	14.6	3,388	19.0	4.5	38,783	84.9	51.3
N03 Antiepileptics	17,386	9.2	163	0.6	0.9	2,417	5.1	13.9	6,640	30.0	38.2	5,580	19.3	32.1	12	0.1	0.1	2,574	5.6	14.8
N04 Anti-Parkinson Drugs	3,887	2.1	65	0.3	1.7	623	1.3	16.0	2,136	9.6	55.0	985	3.4	25.4	0	(-)	(-)	77	0.2	2.0
N05 Psycholeptics	18,879	10.0	332	1.3	1.8	3,649	7.6	19.3	9,274	41.9	49.1	4,416	15.3	23.4	27	0.2	0.1	1,181	2.6	6.3
N06 Psychoanalptics	32,555	17.3	596	2.3	1.8	4,137	8.7	12.7	15,534	70.1	47.7	11,4433	39.6	35.2	24	0.1	0.1	821	1.8	2.5
P01 Antiprotozoals	4,513	2.4	40	0.2	0.9	1,336	2.8	29.6	521	2.4	11.5	535	1.9	11.9	1,949	10.9	43.2	132	0.3	2.9
R03 Drugs For Obstructive Airway Diseases	24,520	13.0	1,043	4.0	4.3	9,471	19.8	38.6	4,787	21.6	19.5	7,156	24.7	29.2	1,742	9.8	7.1	321	0.7	1.3
S01 Ophthalmologicals	5,894	3.1	286	1.1	4.9	1,967	4.1	33.4	1,657	7.5	28.1	1,460	5.1	24.8	45	0.3	0.8	479	1.1	8.1

Figure A1. Difference in Prevalence of Medication Classes Dispensed in Each Cluster Compared to Study Population Prevalence



** Y axis is difference in the proportion of patients dispensed each class within a given cluster compared to the population proportion

Figure A2. Prevalence of Cluster Membership within each Medication Class

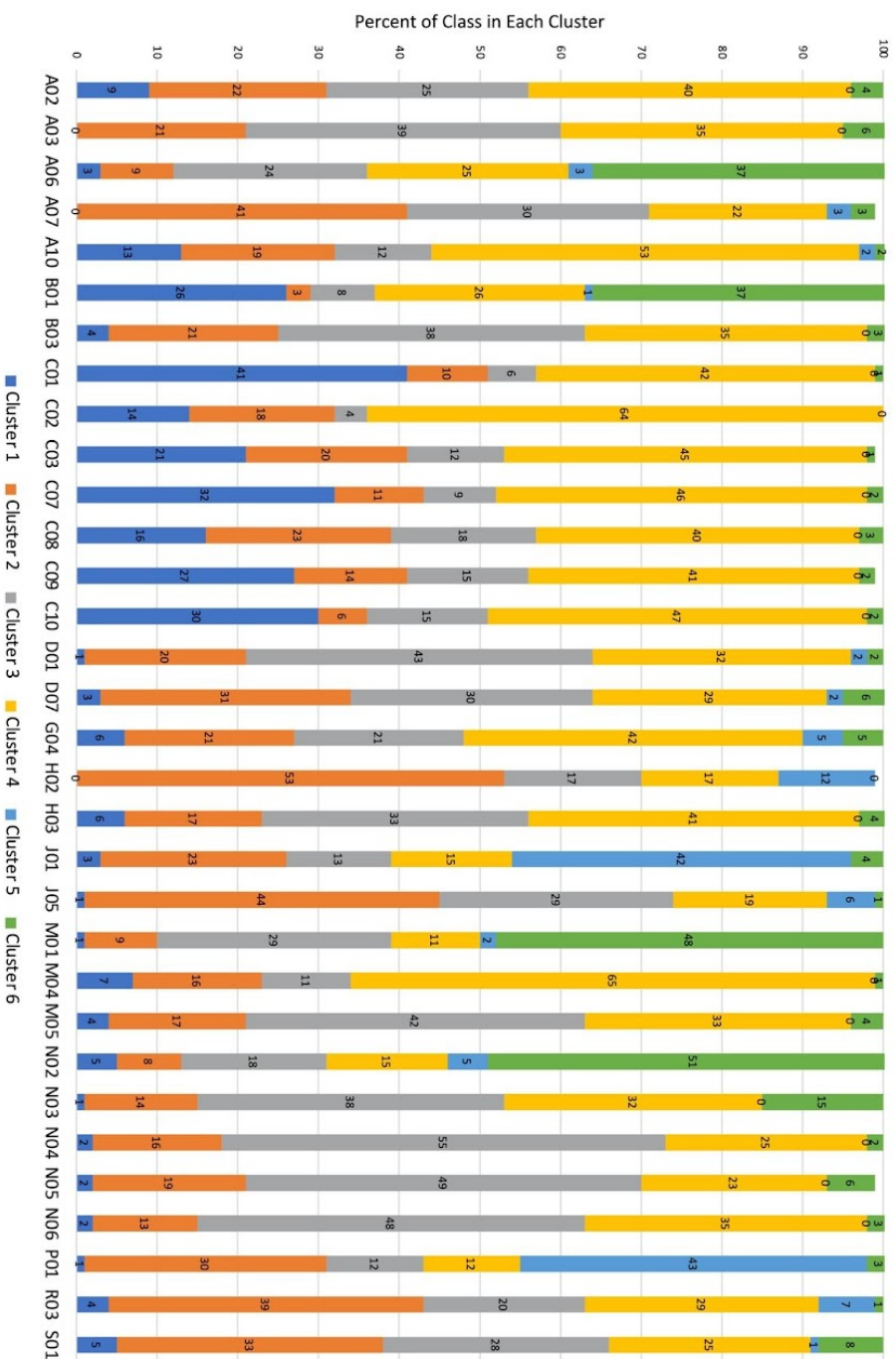


Table A5. Sensitivity analysis- Association Between Medication Clusters and Risk of ED visits and mortality in 30-days Following Discharge

Medication Cluster	Crude risk (%)	Adjusted OR* (95% CI)
Cardiovascular	24.2	0.89 (0.86-0.92)
Respiratory	29.5	1.07 (1.05-1.10)
Complex care needs	25.3	0.80 (0.77-0.83)
Cardiovascular and metabolic	27.1	0.80 (0.77-0.82)
Infection	33.2	1.33 (1.28-1.38)
Surgical	24.0	1.21 (1.17-1.25)

* Reference is all other clusters (e.g., cardiovascular vs not)

Table A6. Association between medication class and ED visits/mortality and ADEs in 30-days following discharge

Medication Class	Adverse drug events in 30-days						ED visits/mortality in 30-days					
	Overall		Continued		New		Overall		Continued		New	
	Crude risk (%)	Adjusted OR* (95% CI)	Crude risk (%)	Adjusted OR* (95% CI)	Crude risk (%)	Adjusted OR* (95% CI)	Crude risk (%)	Adjusted OR* (95% CI)	Crude risk (%)	Adjusted OR* (95% CI)	Crude risk (%)	Adjusted OR* (95% CI)
A02 Drugs for Acid Related Disorders	8.1	1.02 (0.97-1.07)	7.9	0.96 (0.91-1.01)	8.5	1.17 (1.10-1.25)	28.2	1.00 (0.97-1.03)	28.2	0.98 (0.95-1.01)	30.7	1.08 (1.04-1.13)
A03 Drugs for Functional Gastrointestinal Disorders	9.6	1.12 (1.00-1.25)	8.8	1.06 (0.92-1.23)	10.9	1.27 (1.07-1.51)	35.4	1.14 (1.06-1.27)	32.7	1.08 (0.98-1.18)	43.6	1.31 (1.16-1.47)
A06 Drugs for Constipation	6.7	1.01 (0.96-1.06)	7.6	0.91 (0.84-0.99)	6.3	1.06 (0.99-1.13)	27.3	1.00 (0.97-1.03)	28.5	0.92 (0.87-0.96)	28.1	1.04 (1.01-1.08)
A07 Antidiarrheals, Intestinal Anti-inflammatory/Anti-infective Agents	10.0	1.21 (1.07-1.37)	10.0	1.27 (1.05-1.54)	10.0	1.17 (1.00-1.38)	32.8	1.01 (0.92-1.10)	31.4	0.96 (0.94-1.09)	36.4	1.05 (0.94-1.17)
A10 Drugs Used in Diabetes	7.9	0.92 (0.87-0.98)	7.4	0.88 (0.92-0.94)	9.5	1.10 (1.00-1.21)	26.4	0.84 (0.81-0.87)	26.0	0.82 (0.80-0.87)	29.8	0.97 (0.91-1.03)
B01 Antithrombotic Agents	6.5	1.04 (0.99-1.09)	8.1	1.00 (0.94-1.06)	5.7	1.07 (1.01-1.13)	24.0	1.02 (0.99-1.05)	26.9	0.95 (0.91-0.98)	23.3	1.07 (1.03-1.10)
B03 Antianemic Preparations	8.7	1.08 (0.94-1.23)	8.6	1.05 (0.90-1.24)	9.0	1.17 (0.92-1.50)	27.7	0.95 (0.87-1.04)	27.6	0.94 (0.84-1.05)	30.1	1.02 (0.87-1.20)
C01 Cardiac Therapy	9.2	1.07 (1.00-1.14)	8.7	0.94 (0.87-1.02)	9.5	1.16 (1.07-1.25)	29.3	1.06 (1.02-1.10)	28.9	0.96 (0.91-1.02)	29.6	1.11 (1.06-1.16)
C02 Antihypertensives	12.7	1.26 (1.12-1.42)	10.9	1.08 (0.92-1.27)	15.2	1.51 (1.28-1.78)	34.1	1.11 (1.02-1.21)	32.4	0.95 (0.84-1.06)	39.8	1.35 (1.19-1.52)
C03 Diuretics	9.4	1.11 (1.06-1.17)	9.2	1.05 (0.99-1.11)	9.7	1.20 (1.12-1.29)	28.4	0.98 (0.95-1.01)	28.7	0.99 (0.96-1.03)	29.1	1.01 (0.97-1.06)
C07 Beta Blocking Agents	8.5	1.08 (1.03-1.13)	8.4	1.03 (0.98-1.09)	8.7	1.15 (1.07-1.23)	27.6	1.02 (1.00-1.05)	27.2	0.95 (0.92-0.98)	29.2	1.14 (1.09-1.19)
C08 Calcium Channel Blockers	7.8	1.01 (0.96-1.06)	7.7	0.99 (0.92-1.04)	8.3	1.10 (1.01-1.19)	25.6	0.92 (0.89-0.95)	25.6	0.90 (0.86-0.93)	27.5	1.01 (0.96-1.06)

C09 Agents Acting on the Renin-Angiotensin System	6.9	0.91 (0.86-0.95)	6.8	0.92 (0.87-0.97)	7.0	0.93 (0.86-1.01)	23.7	0.88 (0.85-0.91)	23.9	0.89 (0.86-0.92)	24.3	0.89 (0.86-0.94)
C10 Lipid Modifying Agents	7.2	0.90 (0.85-0.94)	7.4	0.96 (0.91-1.01)	6.6	0.89 (0.82-0.97)	24.4	0.84 (0.82-0.87)	24.9	0.88 (0.85-0.91)	23.9	0.90 (0.86-0.95)
D01 Antifungals for Dermatological Use	6.6	0.80 (0.70-0.92)	6.2	0.72 (0.58-0.90)	6.9	0.85 (0.71-1.01)	22.8	0.82 (0.75-0.89)	22.8	0.77 (0.68-0.88)	25.6	0.82 (0.74-0.92)
D07 Corticosteroids, Dermatological Preparations	6.6	0.85 (0.72-1.01)	6.8	0.87 (0.70-1.06)	6.3	0.84 (0.62-1.14)	22.8	0.77 (0.70-0.85)	22.6	0.75 (0.66-0.85)	23.3	0.83 (0.70-0.99)
G04 Urologicals	7.6	0.97 (0.91-1.04)	7.6	0.97 (0.90-1.04)	7.6	1.06 (0.93-1.19)	30.4	1.11 (1.06-1.15)	27.6	0.94 (0.90-1.00)	40.1	1.66 (1.56-1.78)
H02 Corticosteroids for Systemic Use	8.9	1.14 (1.07-1.23)	8.9	1.07 (0.98-1.17)	8.9	1.23 (1.12-1.35)	35.2	1.17 (1.12-1.22)	35.8	1.05 (0.99-1.11)	36.7	1.27 (1.20-1.35)
H03 Thyroid Therapy	7.8	0.96 (0.90-1.02)	7.8	0.98 (0.92-1.05)	7.3	1.04 (0.82-1.33)	25.8	0.93 (0.89-0.97)	25.9	0.95 (0.91-1.00)	26.9	0.89 (0.77-1.03)
J01 Antibacterials for Systemic Use	6.8	0.95 (0.91-1.00)	7.0	0.93 (0.84-1.02)	6.7	0.97 (0.92-1.02)	30.1	1.05 (1.02-1.08)	33.9	1.06 (1.01-1.11)	29.8	1.07 (1.04-1.10)
J05 Antivirals for Systemic Use	6.4	0.80 (0.66-0.97)	6.1	0.70 (0.48-1.02)	6.5	0.88 (0.70-1.02)	26.4	0.80 (0.71-0.90)	30.1	0.90 (0.73-1.11)	27.3	0.78 (0.68-0.89)
M01 Anti-inflammatory and Antirheumatic Products	4.3	0.84 (0.74-0.96)	4.3	0.76 (0.62-0.93)	4.3	0.90 (0.76-1.08)	21.3	0.94 (0.88-1.01)	21.9	0.85 (0.77-0.94)	24.2	1.10 (0.92-1.10)
M04 Antigout Preparations	10.4	1.12 (1.02-1.24)	10.3	1.14 (1.03-1.27)	12.0	1.39 (1.05-1.83)	31.6	1.04 (0.98-1.11)	30.3	1.02 (0.95-1.09)	45.9	1.63 (1.35-1.96)
M05 Drugs for Treatment of Bone Diseases	6.6	0.92 (0.83-1.01)	7.0	0.97 (0.88-1.07)	4.2	0.70 (0.53-0.93)	21.2	0.83 (0.79-0.88)	22.4	0.88 (0.82-0.94)	16.3	0.67 (0.57-0.79)
N02 Analgesics	5.6	0.90 (0.86-0.94)	6.7	0.88 (0.83-0.93)	5.1	0.95 (0.90-1.00)	25.7	1.03 (1.00-1.06)	29.4	0.94 (0.91-0.97)	25.9	1.07 (1.04-1.10)
N03 Antiepileptics	7.8	1.09 (1.02-1.16)	7.9	1.05 (0.97-1.13)	7.6	1.25 (1.12-1.40)	27.5	1.01 (0.97-1.05)	28.4	0.97 (0.93-1.01)	30.6	1.16 (1.09-1.25)
N04 Anti-Parkinson Drugs	6.7	0.91 (0.80-1.04)	7.0	0.95 (0.83-1.09)	4.4	0.62 (0.39-1.00)	24.5	0.90 (0.83-0.97)	25.5	0.95 (0.88-1.03)	21.0	0.71 (0.55-0.92)
N05 Psycholeptics	7.5	0.97 (0.91-1.03)	7.4	0.98 (0.91-1.06)	7.7	0.98 (0.89-1.08)	28.6	1.01 (0.97-1.05)	27.4	0.91 (0.87-0.95)	34.6	1.23 (1.16-1.31)
N06 Psychoanalptics	7.3	0.90 (0.85-0.95)	7.3	0.93 (0.88-0.99)	7.1	0.92 (0.83-1.02)	25.3	0.85 (0.82-0.88)	26.1	0.88 (0.85-0.92)	26.4	0.89 (0.84-0.95)

P01 Antiprotozoals	8.3	1.22 (1.09-1.37)	9.6	1.28 (1.00-1.63)	8.0	1.21 (1.07-1.37)	31.6	1.15 (1.07-1.23)	33.6	1.14 (0.97-1.33)	31.6	1.18 (1.10-1.28)
R03 Drugs For Obstructive Airway Diseases	7.7	0.92 (0.86-0.97)	7.4	0.86 (0.80-0.93)	8.0	1.00 (0.93-1.08)	27.5	0.88 (0.85-0.91)	27.5	0.86 (0.83-0.90)	28.1	0.93 (0.89 -0.97)
S01 Ophthalmologicals	5.7	0.72 (0.64-0.81)	5.9	0.76 (0.67-0.86)	4.9	0.59 (0.45-0.76)	22.8	0.77 (0.72-0.82)	20.6	0.69 (0.64-0.74)	31.8	1.06 (0.93-1.20)