

Table S1. Data Sources integrated within the British Columbia COVID-19 Cohort (BCC19C)

British Columbia Centre for Disease Control (BCCDC), Provincial Health Services Authority (PHSA) and Regional Health Authority data sources:	Data Date Ranges:
- Integrated COVID-19 laboratory dataset (SARS-CoV2 tests from private/public labs) ^{S1}	Jan,2020-onward
- COVID-19 surveillance case data (information collected on all probable/confirmed cases as part of public health follow up by the regional health authorities in BC, including hospitalization data) ^{S2}	Jan,2020-onward
- Provincial COVID-19 Monitoring Solution (critical and non-critical care hospital census data, the PCMS is a daily hospital census of COVID-19 patients admitted to acute care facilities across BC and captures all hospitalizations following a positive COVID-19 test regardless of whether the hospitalization is for COVID-19) ^{S3}	Jan,2020-onward
- Provincial Immunizations Registry (COVID-19 vaccination data) ^{S4}	Dec,2020-onward
- Provincial Laboratory Information Solution (laboratory tests from private/public labs) ^{S5}	Jan,2020-onward
- Public Health Reporting Data warehouse (Influenza laboratory tests) ^{S6}	Jan,2008-onward
Ministry of Health (MoH) Administrative Data Sources:	
- Discharge Abstracts Database (DAD) (hospital discharge records) ^{S7}	2008/9-onward

Supplementary References:

- S1. British Columbia Centre for Disease Control [creator]. Integrated COVID-19 laboratory dataset (SARS-CoV2 tests from private/public labs). Public Health Reporting Data Warehouse, British Columbia Centre for Disease Control [publisher] (2020). 2021.
- S2. British Columbia Centre for Disease Control [creator]. COVID-19 surveillance case data. British Columbia Centre for Disease Control [publisher]. (2020). 2021.
- S3. Provincial Health Services Authority [creator]. Provincial COVID-19 Monitoring Solution. Provincial Health Services Authority [publisher]. (2020). 2021.
- S4. Provincial Health Services Authority [creator]. COVID-19 vaccination data. Provincial Immunizations Registry, Provincial Public Health Information Systems [publisher]. (2020). 2021.
- S5. Provincial Health Services Authority [creator]. Provincial Public Health Information Systems [publisher]. (2020). 2021.
- S6. British Columbia Centre for Disease Control [creator]. Respiratory datamart, Public Health Reporting Data Warehouse, British Columbia Centre for Disease Control [publisher] (2020). 2021.
- S7. British Columbia Ministry of Health [creator]. Discharge Abstract Database (Hospital Separations). British Columbia Ministry of Health [publisher]. Data Extract. MOH (2020). 2021. (<https://www2.gov.bc.ca/gov/content/health/health-forms/online-services>)

Table S2. Variables of interest of the study

Variables	Definition/Categories
Age	Age (years) was categorized into 0-4, 5-11, 12-17, 18-29, 30-39, 40-49, 50-59, 60-69, and 70+ years old
Sex	Sex was categorized into Male, Female, Unknown
Health authority of residence	British Columbia has five regional health authorities that deliver health services to meet the needs of the population within their respective geographic regions: Fraser, Vancouver Coastal, Vancouver Island, Interior, and Northern. Missing health authority was categorized as “Unknown”.
Admission date	Date of hospital admission
Discharge date	Date of hospital discharge
Length of stay in hospital	Length of stay in the hospital was generated by subtracting discharge date from admission date within one episode of hospitalization
Vaccine status	Vaccine status was categorized into Fully vaccinated, Vaccinated with 1 dose (or partially vaccinated) and Unvaccinated. Fully vaccination was defined as receipt of two or more doses in which the second/third dose was received ≥ 14 days before case surveillance date. Case surveillance date is based on date of symptom onset. When symptom onset was unavailable, earliest laboratory date was used (collection or result date); if also unavailable, then public health report date was used. Partially vaccinated cases were those who became a case ≥ 21 days after their first dose and did not meet the criteria of fully vaccinated. Unvaccinated cases were those without any doses or those cases within < 21 days after their first dose. Partially vaccinated cases were only included for the children 5-11 years old and excluded from 12+ cases due to small sample size. Children aged 0-4 were not eligible for COVID-19 vaccination.

Table S3: Demographic characteristics of hospitalized patients testing positive for COVID-19 during a year in 2020/21 and for influenza in 2009/10 (H1N1 pandemic), 2015/16 (severe for children), and 2016/17 (severe for adults)

Characteristics	COVID-19 (n=3,398)	Influenza 2009/10 (n=1,483)	Influenza 2015/16 (n=1,032)	Influenza 2016/17 (n=1,979)
	n (%)	n (%)	n (%)	n (%)
Sex				
Female	1462 (43)	788 (53)	519 (50)	1037 (52)
Male	1932 (57)	695 (47)	513 (50)	941 (48)
Unknown	<5	0 (0)	0 (0)	<5
Age, years				
Median (Q1-Q3)	66 (52-78)	40 (16-55)	59 (33-75)	77 (61-86)
Age category, years				
0-4	21 (1)	196 (13)	108 (10)	67 (3)
5-11	5 (0)	130 (9)	53 (5)	29 (1)
12-17	6 (0)	68 (5)	27 (3)	23 (1)
18-29	135 (4)	195 (13)	44 (4)	39 (2)
30-39	278 (8)	143 (10)	74 (7)	69 (3)
40-49	323 (10)	217 (15)	78 (8)	73 (4)
50-59	497 (15)	243 (16)	137 (13)	168 (8)
60-69	677 (20)	123 (8)	156 (15)	258 (13)
70+	1456 (43)	168 (11)	355 (34)	1253 (63)
Health authority				
Fraser	1650 (49)	460 (31)	264 (26)	439 (22)
Vancouver Coastal	899 (26)	279 (19)	322 (31)	636 (32)
Vancouver Island	130 (4)	228 (15)	229 (22)	601 (30)
Interior	322 (9)	351 (24)	139 (13)	224 (11)
Northern	397 (12)	151 (10)	62 (6)	59 (3)
Unknown	0 (0)	14 (1)	16 (2)	20 (1)
Abbreviation: COVID-19=Coronavirus Disease 2019, n=number, Q=Quartile				
Note: For the annual COVID-19 cohort we included all patients hospitalized for COVID-19 up to 14 days after or 2 days prior to specimen collection date from March 2020 to February 2021. For influenza, we selected three 12-month periods from September to August with distinct severity: 2009/10=H1N1 pandemic, 2015/16=mild influenza with higher severity in children, 2016/17=severe influenza with higher severity in adults				

Table S4: Median of length of stay (days) in hospital among patients testing positive for COVID-19 during a year in 2020/21 and patients hospitalized for influenza in 2009/10 (H1N1 pandemic), 2015/16 (severe for children), and 2016/17 (severe for adults) in British Columbia, Canada

Age group, years	COVID_19 (n=3398)	Influenza 2009/10 (n=1483)	Influenza 2015/16 (n=1032)	Influenza 2016/17 (n=1979)	P- value[#]
Total					
Median (Q1-Q3)	8 (4-16)	3 (2-6)	5 (3-10)	6 (3-12)	<0.001
0-4					
Median (Q1-Q3)	2 (2-3)	2 (1-4)	3 (2-5)	3 (2-5)	0.027
5-11					
Median (Q1-Q3)	2 (2-2)	2 (2-5)	3 (2-7)	2 (1-5)	0.043
12-17					
Median (Q1-Q3)	9.5 (2-20)	2.5 (1.5-5)	2 (1-4)	3 (2-9)	0.270
18-29					
Median (Q1-Q3)	4 (2-8)	2 (2-4)	3 (2-5)	2 (1-3)	<0.001
30-39					
Median (Q1-Q3)	4 (2-7)	3 (2-5)	3 (2-8)	3 (2-5)	<0.001
40-49					
Median (Q1-Q3)	6 (3-11)	4 (2-7)	4 (3-9)	4 (3-7)	<0.001
50-59					
Median (Q1-Q3)	7 (4-12)	5 (2-8)	7 (3-13)	4 (2-8)	<0.001
60-69					
Median (Q1-Q3)	9 (5-17)	5 (2-9)	6 (3-10)	5 (3-11)	<0.001
70+					
Median (Q1-Q3)	10 (5-19)	5 (3-10.5)	7 (4-12)	7 (4-14)	<0.001
Abbreviation: COVID-19= Coronavirus Disease 2019, n=number, Q=Quartile					
Note: For the annual COVID-19 cohort we included all patients hospitalized for COVID-19 up to 14 days after or 2 days prior to specimen collection date from March 2020 to February 2021. For influenza, we selected three 12-month periods from September to August with distinct severity: 2009/10=H1N1 pandemic, 2015/16=mild influenza with higher severity in children, 2016/17=severe influenza with higher severity in adults					
#Kruskal–Wallis one-way analysis of variance					

Table S5: Validation of ICD-10 algorithms against lab-confirmed hospitalization to identify hospitalized individuals with seasonal influenza infection residing in Vancouver Coastal Health region of British Columbia, Canada

Characteristics	TP	FP	FN	TN	Sensitivity (95% CI)	Specificity (95% CI)	PPV (95%CI)	NPV (95%CI)
Influenza 2009/10	142	114	20	406	88 (83, 93)	78 (75, 82)	55 (49, 62)	95 (93, 97)
Influenza 2015/16	154	21	62	652	71 (65, 77)	97 (95, 98)	88 (82, 92)	91 (89, 93)
Influenza 2016/17	361	64	121	1094	75 (71, 79)	94 (93, 96)	85 (82, 88)	90 (88, 92)

Abbreviation: CI=Confidence Interval, FN=False Negative, FP=False Positive, ICD-10=International Classification of Disease 10th edition, NPV=Negative Predictive Value, PPV=Positive Predictive Value, TN=True Negative, TP=True Positive
 Note: We selected the 8-week peak in each influenza season.

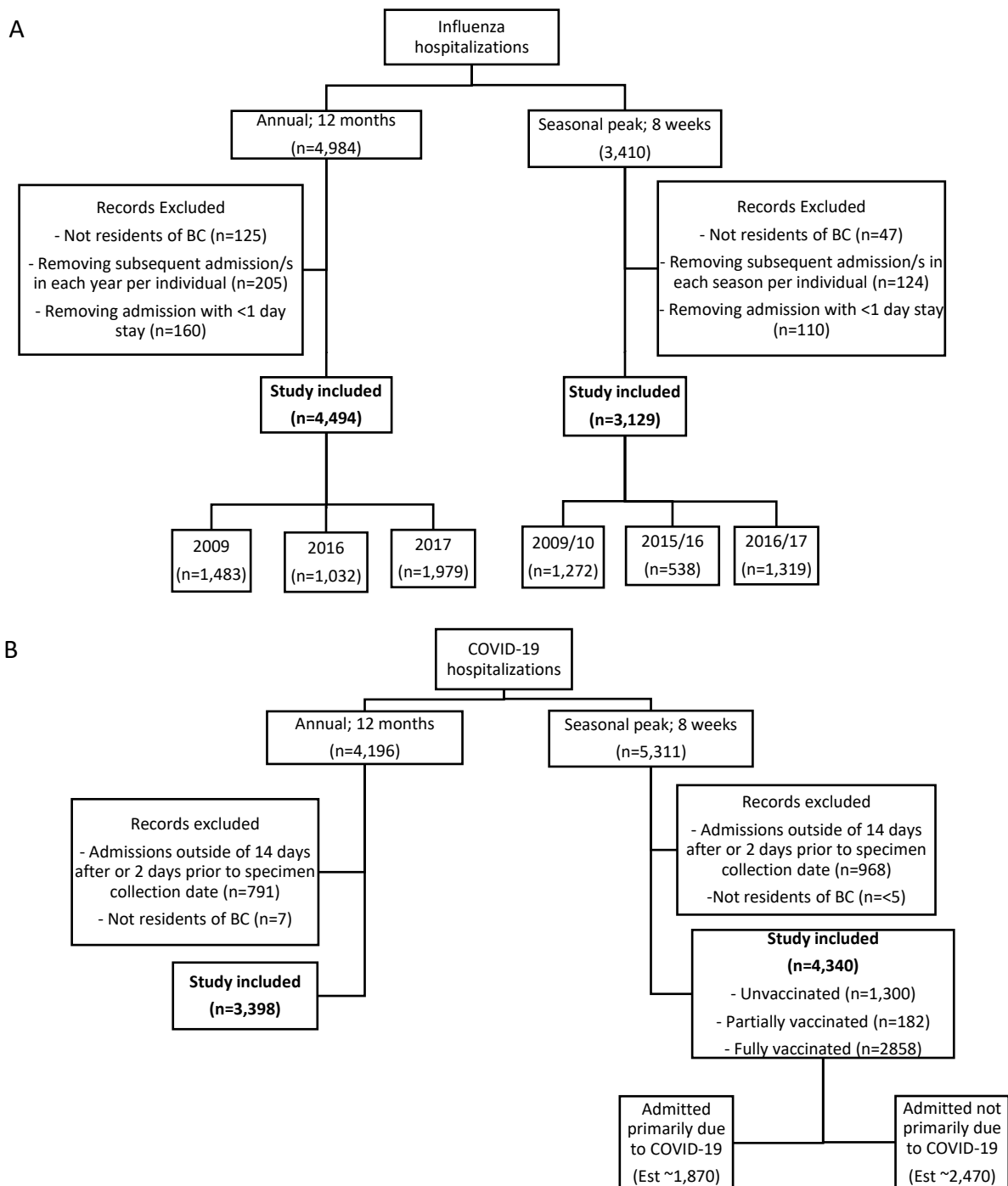
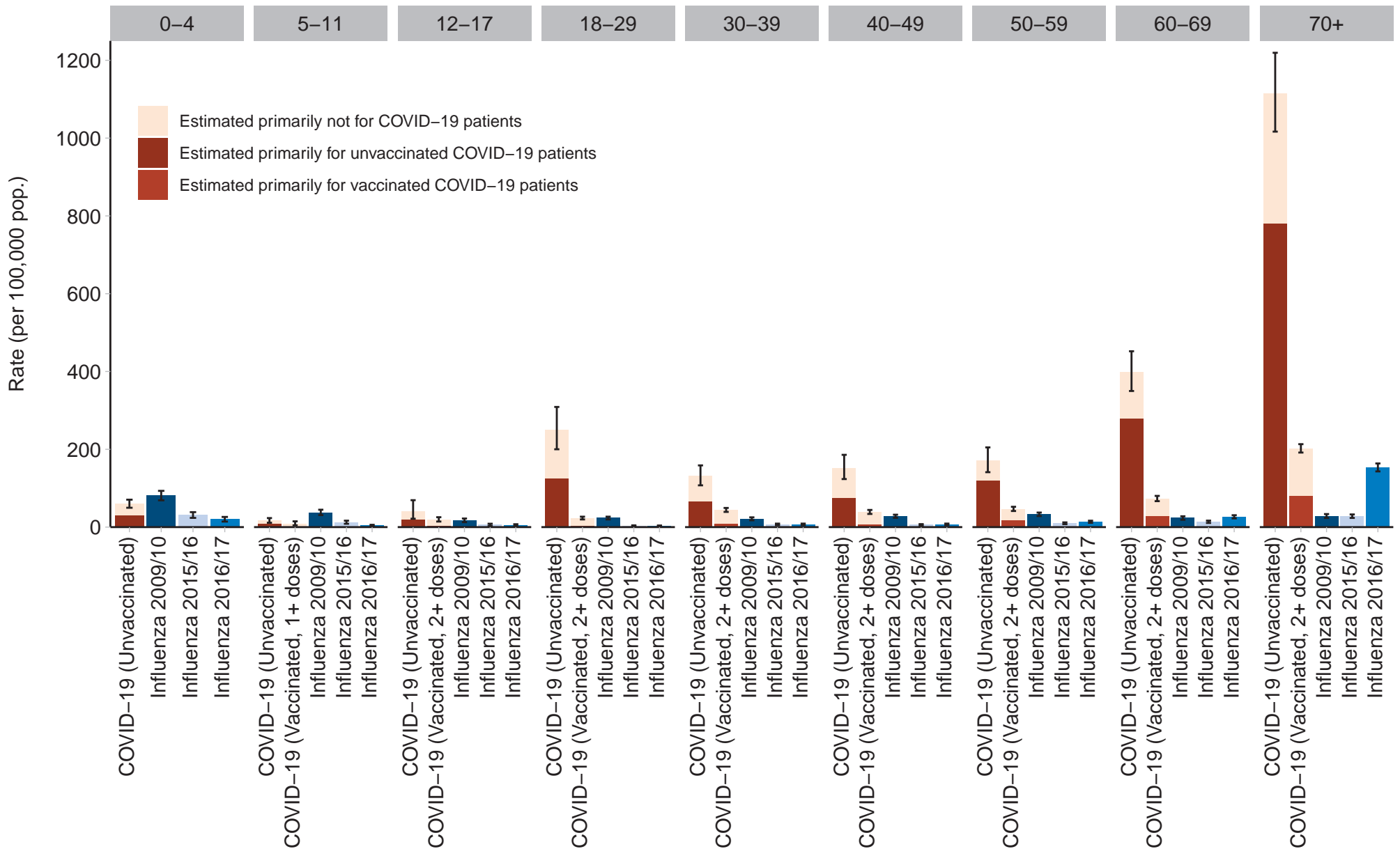


Figure S1: Annual and seasonal peak study cohorts for influenza and COVID-19 hospitalization.

Note: A) In annual influenza we selected three years from September to August with distinct severity: 2009/10=H1N1 pandemic, 2015/16=mild influenza with higher severity in children, 2016/17=severe influenza with higher severity in adults. For influenza seasonal analysis we selected the 8-week peak from each season. B) For the annual COVID-19 cohort we included all patients hospitalized for COVID-19 up to 14 days after or 2 days prior to specimen collection date from March 2020 to February 2021. For the peak COVID-19 cohort we included all patients hospitalized for COVID-19 up to 14 days after or 2 days prior to specimen collection date during the first 8 weeks of 2022 when Omicron was dominant and >90% of adults in British Columbia were vaccinated with at least 2 doses. We applied the following estimates for proportion of hospitalizations likely primarily due to COVID-19:

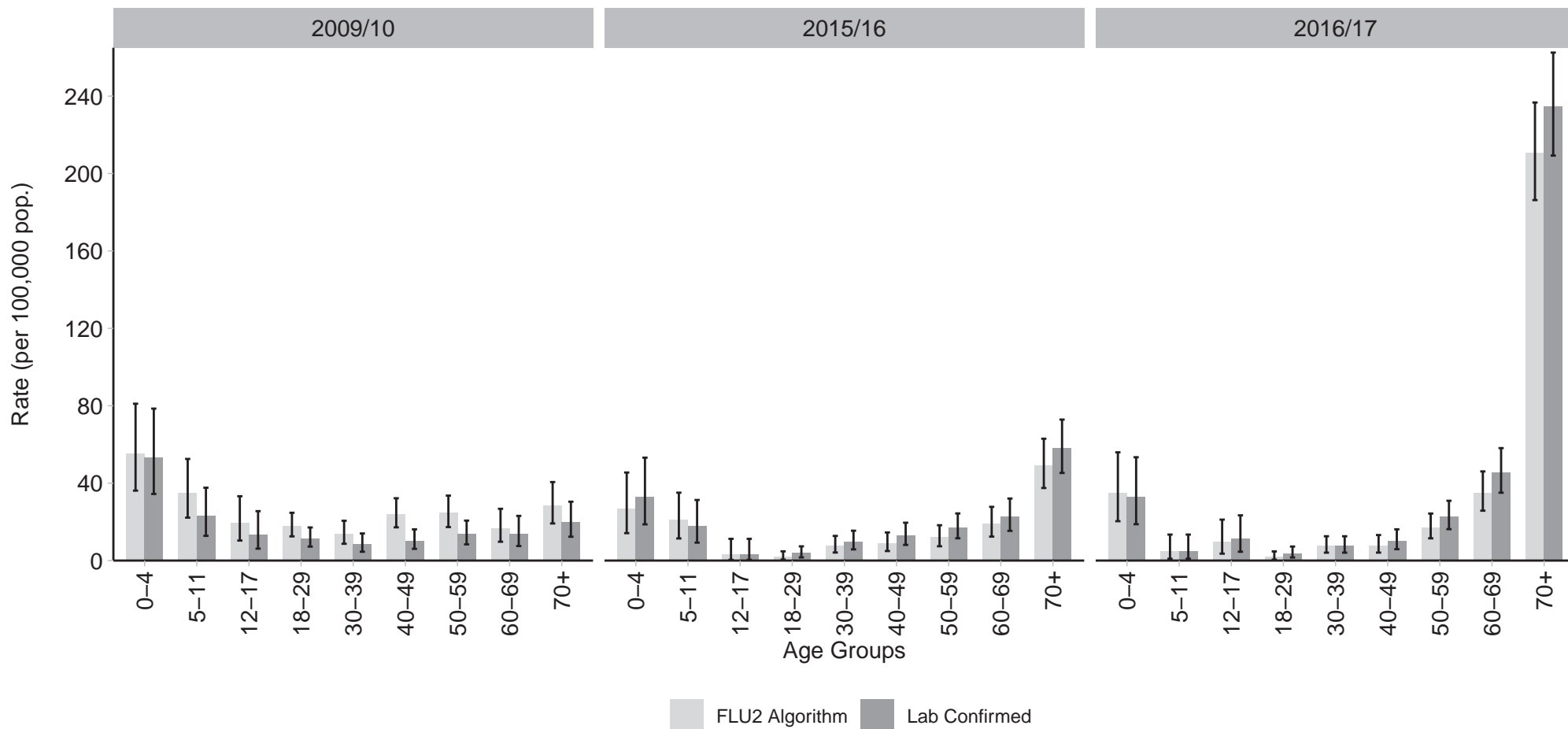
unvaccinated <50 years old (50%), unvaccinated ≥50 years old (70%), vaccinated <50 years old (20%) and vaccinated ≥50 years old (40%). Numbers were rounded to zero decimal point.

Figure S2: Hospitalization rates in patients testing positive for COVID-19 during the peak of Omicron variant (week 1-8 of 2022) compared with hospitalized patients for influenza in the peak of 2009/10 (H1N1 pandemic), 2015/16 (severe for children), and 2016/17 (severe for adults) season, by age group and COVID-19 vaccine status, British Columbia, Canada



Note: For the peak COVID-19 cohort we included all patients hospitalized for COVID-19 up to 14 days after or 2 days prior to specimen collection date during the first 8 weeks of 2022 when Omicron was dominant and >90% of adults in British Columbia were vaccinated with at least 2 doses. We selected the 8-week peak of three seasons with distinct severity for influenza: 2009/10=H1N1 pandemic, 2015/16=mild with higher severity in children, 2016/17=severe with higher severity in adults. We applied the following estimates for proportion of hospitalizations likely primarily due to COVID-19: unvaccinated <50 years old (50%), unvaccinated >=50 years old (70%), vaccinated <50 years old (20%) and vaccinated >=50 years old (40%).

Figure S3: Seasonal lab-confirmed versus ICD code-identified (FLU2 algorithm) influenza hospitalization rates during the peak (8 weeks) of 2009/10 (H1N1 pandemic), 2015/16 (severe for children), and 2016/17 (severe for adults), by age group among the residents of Vancouver Coastal Health, British Columbia, Canada



Note: We selected the 8-week peak of three seasons with distinct severity for influenza: 2009/10=H1N1 pandemic, 2015/16=mild with higher severity in children, 2016/17=severe with higher severity in adults.