

1 **International Multicenter Study Comparing Cancer to Non-Cancer Patients with COVID-**  
2 **19: Impact of Risk Factors and Treatment Modalities on Survivorship**

3 Issam Raad\*<sup>1</sup>, Ray Hachem\*<sup>1</sup>, Nigo Masayuki<sup>2</sup>, Tarcila Datoguia<sup>3</sup>, Hiba Dagher<sup>1</sup>, Ying Jiang<sup>1</sup>,  
4 Vivek Subbiah<sup>4-5</sup>, Bilal Siddiqui<sup>6</sup>, Arnaud Bayle<sup>7</sup>, Robert Somer<sup>8</sup>, Ana Fernández Cruz<sup>9</sup>,  
5 Edward Gorak<sup>10</sup>, Arvinder Bhinder<sup>11</sup>, Nobuyoshi Mori<sup>12</sup>, Nelson Hamerschlak<sup>3</sup>, Samuel  
6 Shelanski<sup>13</sup>, Tomislav Dragivich<sup>14</sup>, Yee Elise Vong Kiat<sup>15</sup>, Suha Fakhreddine<sup>16</sup>, Pierre Abi  
7 Hanna<sup>16</sup>, Roy F. Chemaly<sup>1</sup>, Victor Mulanovich<sup>1</sup>, Javier Adachi<sup>1</sup>, Jovan Borjan<sup>1</sup>, Fareed  
8 Khawaja<sup>1</sup>, Bruno Granwehr<sup>1</sup>, Teny John<sup>1</sup>, Eduardo Yepez Guevara<sup>1</sup>, Harrys Torres<sup>1</sup>,  
9 Natraj Reddy Ammakkanavar<sup>4</sup>, Marcel Yibirin<sup>1</sup>, Cielito C Reyes-Gibby<sup>17</sup>, Mala Pande<sup>18</sup>, Noman  
10 Ali<sup>19</sup>, Raniv Dawey Rojo<sup>20</sup>, Shahnoor M Ali<sup>1</sup>, Rita E Deeba<sup>1</sup>, Patrick Chaftari<sup>17</sup>, Takahiro  
11 Matsuo<sup>12</sup>, Kazuhiro Ishikawa<sup>12</sup>, Ryo Hasegawa<sup>12</sup>, Ramón Aguado-Noya<sup>21</sup>, Álvaro García-  
12 García<sup>22</sup>, Cristina Traseira Puchol<sup>21</sup>, Dong-Gun Lee<sup>23</sup>, Monica Slavin<sup>24</sup>, Benjamin Teh<sup>24</sup>, Cesar  
13 A Arias<sup>2</sup>, Data-Driven Determinants for COVID-19 Oncology Discovery Effort (D3CODE)  
14 Team<sup>25</sup>, Dimitrios P. Kontoyiannis<sup>1</sup>, Alexandre E. Malek<sup>1</sup>, Anne-Marie Chaftari\*<sup>†1</sup>

15 \*Contributed equally

16 †Corresponding Author

17 <sup>1</sup> Department of Infectious Diseases, Infection Control and Employee Health, The University of  
18 Texas MD Anderson Cancer Center, Houston, Texas, USA

19 <sup>2</sup> Division of Infectious Diseases, McGovern Medical School, The University of Texas Health  
20 Science Center at Houston, Houston, Texas, USA

21 <sup>3</sup> Médica Hematologista Hospital Israelita Albert Einstein, São Paulo, Brasil

22 <sup>4</sup> Department of Investigational Cancer Therapeutics, The University of Texas MD Anderson  
23 Cancer Center, Houston, Texas, USA

24 <sup>5</sup>MD Anderson Cancer Network, UT MD Anderson Cancer Center, Houston, Texas, USA

25 <sup>6</sup>Department of Hematology Oncology, Community Health Network, Indiana, USA

26 <sup>7</sup>Department of Medical Oncology, Gustave Roussy, Université Paris-Saclay, Villejuif, France

27 <sup>8</sup>Cooper Medical School of Rowan University, Cooper University Health Care, Camden, New  
28 Jersey, USA

29 <sup>9</sup>Unidad de Enfermedades Infecciosas, Servicio de Medicina Interna, Hospital Universitario  
30 Puerta de Hierro, Madrid, Spain

31 <sup>10</sup>Department of Hematology Oncology, Baptist Health, Jacksonville, Florida, USA

32 <sup>11</sup>Department of Hematology/Oncology, Ohio Health Marion, Ohio, USA

33 <sup>12</sup>Department of Infectious Diseases, St. Luke's International Hospital, Tokyo, Japan

34 <sup>13</sup>Banner MD Anderson Cancer Center – North Colorado, Greeley, Colorado, USA

35 Division of Cancer Medicine, Banner MD Anderson Cancer Center, Gilbert, Arizona, USA

36 <sup>15</sup> Department of Medical Oncology, Tan Tock Seng Hospital, Singapore

37 <sup>16</sup> Department of Infectious Diseases, Rafik Hariri University Hospital, Beirut, Lebanon

38 <sup>17</sup> Department of Emergency Medicine, The University of Texas MD Anderson Cancer Center,  
39 Houston, Texas

40 <sup>18</sup>Department of Gastroenterology, The University of Texas MD Anderson Cancer Center,  
41 Houston, Texas

42 <sup>19</sup> Department of Hospital Medicine, The University of Texas MD Anderson Cancer Center,  
43 Houston, Texas

44 <sup>20</sup> Department of Breast Surgical Oncology, The University of Texas MD Anderson Cancer  
45 Center, Houston, Texas

46 <sup>21</sup> Oncology Department, Hospital Universitario Puerta de Hierro-Majadahonda, Madrid, Spain

47 <sup>22</sup> Hematology Department, Hospital Universitario Puerta de Hierro-Majadahonda, Madrid,  
48 Spain

49 <sup>23</sup> Division of Infectious Diseases, Department of Internal Medicine, Vaccine Bio Research  
50 Institute, The Catholic University of Korea, Seoul, Korea

51 <sup>24</sup> Department of Infectious Diseases and National Centre for Infections in Cancer, Peter  
52 MacCallum Cancer Centre, Melbourne, Victoria, Australia

53 <sup>25</sup> Data-Driven Determinants for COVID-19 Oncology Discovery Effort (D3CODE) Team at The  
54 University of Texas MD Anderson Cancer Center, Houston, TX

55 Corresponding authors: Anne-Marie Chaftari & Ray Hachem, Department of Infectious  
56 Diseases, Infection Control and Employee Health, The University of Texas MD Anderson  
57 Cancer Center, 1515 Holcombe Blvd., Unit 1460, Houston, TX 77030, USA. Tel: 713-792-3491,  
58 Email: [achaftari@mdanderson.org](mailto:achaftari@mdanderson.org); [rhachem@mdanderson.org](mailto:rhachem@mdanderson.org)

59 **Keywords:** COVID-19, coronavirus, cancer patients, non-cancer patients.

60 Word count: 3058

61

62 **ABSTRACT**

63 **Background:** In this international multicenter study we aimed to determine the independent risk  
64 factors associated with increased 30-day mortality and the impact of novel treatment modalities  
65 in a large group of cancer and non-cancer patients with COVID-19 from multiple countries.

66 **Methods:** We retrospectively collected de-identified data on a cohort of cancer and non-cancer  
67 patients diagnosed with COVID-19 between January and November 2020, from 16 international  
68 centers.

69 **Results:** We analyzed 3966 COVID-19 confirmed patients, 1115 cancer and 2851 non-cancer  
70 patients. Cancer patients were more likely to be pancytopenic, and have a smoking history,  
71 pulmonary disorders, hypertension, diabetes mellitus, and corticosteroid use in the preceding two  
72 weeks ( $p \leq 0.01$ ). In addition, they were more likely to present with higher inflammatory  
73 biomarkers (D-dimer, ferritin and procalcitonin), but were less likely to present with clinical  
74 symptoms ( $p \leq 0.01$ ). By multivariable logistic regression analysis, cancer was an independent  
75 risk factor for 30-day mortality (OR 1.46; 95% CI 1.03 to 2.07;  $p = 0.035$ ). Older age ( $\geq 65$  years)  
76 was the strongest predictor of 30-day mortality in all patients (OR 4.55; 95% CI 3.34 to 6.20;  $p <$   
77  $0.0001$ ). Remdesivir was the only therapeutic agent independently associated with decreased 30-  
78 day mortality (OR 0.58; CI 0.39-0.88;  $p = 0.009$ ). Among patients on low-flow oxygen at  
79 admission, patients who received remdesivir had a lower 30-day mortality rate than those who  
80 did not (5.9% vs 17.6%;  $p = 0.03$ ).

81 **Conclusions:** Cancer is an independent risk factor for increased 30-day all-cause mortality from  
82 COVID-19. Remdesivir, particularly in patients receiving low-flow oxygen, can reduce 30-day  
83 all-cause mortality.

84 **Condensed Abstract**

85 In this large multicenter worldwide study of 4015 patients with COVID-19 that included 1115  
86 patients with cancer, we found that cancer is an independent risk factor for increased 30-day all-  
87 cause mortality. Remdesivir is a promising treatment modality to reduce 30-day all-cause  
88 mortality.

## 89 INTRODUCTION

90 The COVID-19 pandemic has challenged the health care system worldwide and has spread to  
91 more than 200 countries, causing hundreds of millions confirmed cases and several million  
92 deaths.<sup>1</sup>

93 Data from multiple studies have shown consistently that older age and comorbidities such as  
94 cardiovascular disease, diabetes mellitus (DM), hypertension, and chronic obstructive pulmonary  
95 disease (COPD) have been associated with severe illness and increased mortality.<sup>2</sup>

96 Several studies on COVID-19 mortality suggested that cancer patients had poor outcomes.<sup>3-</sup>

97 Many of these studies included only cancer patients and did not have a comparator group of non-  
98 cancer patients.<sup>3-7</sup> Other studies compared COVID-19 mortality between cancer and non-cancer  
99 patients and found that cancer patients had worse outcomes.<sup>9-13</sup> However, all of these

100 comparative studies included a relatively small number of cancer patients and were restricted to a  
101 particular country, which limits their generalizability to cancer patients worldwide.

102 Given that many of the therapeutic studies on COVID-19 were conducted in non-cancer patients  
103 and given the poor outcomes of COVID-19 reported in cancer patients,<sup>9-18</sup> we aimed to conduct a  
104 large multicenter study to compare the impact of these various treatments on the outcome in  
105 cancer versus non-cancer patients.

106 Therefore, given the global spread of the COVID-19 pandemic and the worldwide prevalence of  
107 cancer, we undertook this international initiative that included 16 centers from five continents to  
108 study and compare the clinical course, risk factors and treatment modalities impact on outcomes  
109 in cancer versus non-cancer patients with COVID-19 on a worldwide basis.

110

## 111 Methods

## 112 **Study design and participants**

113 This was a retrospective international multicenter study that included all patients diagnosed with  
114 COVID-19 by real-time polymerase chain reaction (RT-PCR) for severe acute respiratory  
115 syndrome coronavirus 2 (SARS-CoV-2) at the site or an outside facility between January 4,  
116 2020, and November 15, 2020.

117 The study involved 16 centers from 9 countries, eight centers in the United States and one each  
118 in Australia, Brazil, France, Japan, Lebanon, Singapore, South Korea, and Spain. Patients were  
119 divided into two groups: non-cancer and cancer patients diagnosed or treated within a year  
120 before the diagnosis of COVID-19.

## 121 **Multicenter collaboration and data collection**

122 The University of Texas MD Anderson Cancer Center was the coordinating center that designed  
123 the study, built the electronic case report form and collected de-identified patient information  
124 from all participating centers using the secure Research Electronic Data Capture platform. We  
125 reviewed each patient's electronic hospital record and collected all needed data. This study was  
126 approved by the institutional review board at MD Anderson Cancer Center and the institutional  
127 review boards of the collaborating centers. A patient waiver of informed consent was obtained.  
128 The follow-up period was defined as 30 days after a diagnosis of COVID-19.

129 Neutropenia was defined as an absolute neutrophil count <500 cells/mL. Lymphopenia was  
130 defined as an absolute lymphocyte count <500 cells/mL.

131

## 132 **Treatment modalities**

133 For each patient, data were collected on COVID-19 treatments, including antimicrobial therapy  
134 and potential antiviral therapy. We evaluated patient's oxygen requirement: low-flow was defined

135 as oxygen supplementation of  $\leq 6$  liters/minute through a nasal cannula or facemask, and high-  
136 flow included all other modalities of oxygen supplementation, including mechanical ventilation.

### 137 **Outcomes measures**

138 The primary outcome of interest was 30-day mortality. The secondary outcomes included  
139 mechanical ventilation, progression to lower respiratory tract infection, co-infection, and hospital  
140 readmissions within 30 days after COVID-19 diagnosis.

### 141 **Statistical analysis**

142 Patient characteristics and outcomes were compared between COVID-19 patients with and  
143 without cancer. Categorical variables were compared using chi-square or Fisher's exact test, and  
144 continuous variables compared using Wilcoxon rank sum test. Kaplan-Meier curves were  
145 estimated and compared using a log-rank test. A multivariable logistic regression model was  
146 used to identify the independent predictors of 30-day mortality in all patients and in cancer  
147 patients and non-cancer patients among the following factors: patients' demographic and clinical  
148 characteristics, medical history, laboratory findings at diagnosis, and treatment. In cancer  
149 patients, the mortality rates of patients with different types of cancer were estimated and  
150 compared. Lastly, the impacts on mortality of certain therapeutic agents and their timing of  
151 administration were evaluated using chi-square or Fisher's exact test. All statistical tests were  
152 two-sided with a significance level of 0.05. The analyses were performed using SAS version 9.3  
153 (SAS Institute Inc., Cary, NC).

### 154 **RESULTS**

155 A total of 4015 patients diagnosed with COVID-19 by PCR were included in the study. After  
156 excluding 18 patients who had missing demographics and 31 patients younger than 18 years, we  
157 evaluated 3966 COVID-19 patients: 2851 non-cancer and 1115 cancer patients.



158 **Demographics and clinical characteristics of patients with and without cancer**

159 Patient characteristics are presented in Table 1. Compared to non-cancer patients, cancer patients  
160 were older (median age, 61 vs 50 years;  $p<0.0001$ ); more likely to have a smoking history (38%  
161 vs 17%;  $p<0.0001$ ), pulmonary disorder (27% vs 21%;  $p<0.001$ ), hypertension (49% vs 36%,  
162  $p<0.0001$ ), DM (27% vs 23%,  $p=0.01$ ), or corticosteroid use in the two weeks preceding  
163 COVID-19 diagnosis (17% vs 4%,  $p<0.0001$ ); and less likely to present with clinical symptoms,  
164 including cough (46% vs 65%;  $p<0.0001$ ), fever (45% vs 66%;  $p<0.0001$ ), and shortness of  
165 breath (35% vs 48%;  $p<0.0001$ ).

166 Compared to non-cancer patients, cancer patients were more likely to present with neutropenia  
167 (7% vs 0.1%;  $p<0.0001$ ), lymphocytopenia (49% vs 32%;  $p<0.0001$ ), thrombocytopenia (39% vs  
168 13%;  $p<0.0001$ ), and anemia (47% vs 29%;  $p<0.0001$ ) and had higher median levels of  
169 inflammatory biomarkers, including D-dimer, ferritin, and procalcitonin. On imaging studies  
170 (computed tomography), cancer patients were less likely than non-cancer patients to present with  
171 ground-glass opacities (68% vs 78%;  $p<0.0001$ ) or peripheral distribution of the infiltrates (17%  
172 vs 41%;  $p<0.0001$ ).

173 **Treatment and outcomes of patients with and without cancer**

174 The rate of COVID-related hospital admission was higher in the non-cancer patients (64% vs  
175 57%;  $p<0.001$ ). Co-infections occurred more frequently in cancer patients (11% vs 8%;  
176  $p=0.006$ ). Among hospitalized patients, cancer patients were more likely than non-cancer  
177 patients to be discharged on supplemental oxygen (17% vs %;  $p=0.007$ ). Likewise, the rate of  
178 hospital readmission within 30 days was higher in cancer patients (13% vs 7%;  $p<0.0001$ ).  
179 Furthermore, the mortality rate within 30 days was significantly higher in cancer patients (11%  
180 vs 8%;  $p=0.003$ ) (Table 1 and Figure 1).

181 **Risk factors for death within 30 days after COVID-19 diagnosis**

182 Of the total 3966 patients 348 died within 30 days (8.8%) and of them 189 had data available for  
183 their cause of death, which showed 93% (176/189) of the deaths were COVID-19 related. In the  
184 multivariable logistic regression analysis including all patients, cancer was an independent risk  
185 factor for 30-day mortality (OR 1.46; 95% CI 1.03 to 2.07;  $p=0.035$ ) even though cancer patients  
186 were less frequently hospitalized and less frequently received corticosteroids and remdesivir  
187 (Figure 2). Older age ( $\geq 65$  years) was the strongest predictor of 30-day mortality in all patients  
188 (OR 4.55; 95% CI 3.34 to 6.20;  $p<0.0001$ ) and in both cancer and non-cancer patients (Figures 2  
189 & 3).

190 Other independent risk factors for 30-day mortality in all patients included hypoxia at diagnosis  
191 (OR 3.21; 95% CI 2.18 to 4.71;  $p<0.0001$ ), need for mechanical ventilation (OR 2.37; 95% CI  
192 1.34 to 4.18;  $p=0.003$ ), and presence of co-infection (OR 1.86; 95% CI 1.28 to 2.70;  $p=0.001$ )  
193 (Figure 2).

194 In cancer patients, lower respiratory tract infection manifested by the presence of pulmonary  
195 infiltrates either at diagnosis or during the course of infection was a strong independent predictor  
196 of 30-day mortality (OR 3.70; 95% CI 1.94 to 7.08;  $p<0.0001$ ) (Figure 3).

197 Among cancer patients, the 30-day mortality rate was significantly higher in patients with lung  
198 cancer than in patients with non-lung cancer solid tumors, including those with lung metastases  
199 ( $p<0.001$ ; Table 2). Patients with hematologic malignancies had a significantly higher 30-day  
200 mortality than patients with non-lung cancer solid tumors ( $p<0.001$ ) but tended to have a lower  
201 mortality rate than patients with lung cancer ( $p=0.07$ ; Table 2). We did not find a significant  
202 difference in mortality between hematological malignancies and solid tumors by multivariate  
203 analysis ( $p=0.30$ ).

204 By multivariate analysis, remdesivir was the only therapeutic agent independently associated  
205 with decreased 30-day all-cause mortality in all patients (OR 0.58; 95% CI 0.39 to 0.88;  
206  $p=0.009$ ) (Figure 2), in cancer patients (OR 0.44; 95% CI 0.20 to 0.96;  $p=0.04$ ) and non-cancer  
207 patients (OR 0.61; 95% CI 0.38 to 0.98;  $p=0.04$ ) (Figure 3).

208 Among patients on low-flow oxygen at admission, the mortality rate was lower among those  
209 who received remdesivir than among those who did not (5.9% [3 of 51] vs 17.6% [68 of 387];  
210  $p=0.03$ ). However, among patients on high-flow oxygen at admission, there was no difference in  
211 the mortality rate between patients who received remdesivir and those who did not (29.7% [11 of  
212 37] and 34.4% [53 of 154], respectively;  $p=0.59$ ).

213 Since 85% of patients treated with remdesivir also received corticosteroids, we evaluated the  
214 impact of their combination therapy on 30-day mortality. Among patients on low-flow oxygen at  
215 admission, the mortality rates among those who received remdesivir alone or in combination  
216 with corticosteroids (0% [0 of 8] and 7.0% [3 of 43], respectively) tended to be lower than the  
217 mortality rate of those who received corticosteroids alone (18.3% [21 of 115];  $p=0.10$ ). However,  
218 mortality rates were similar for remdesivir alone and combination therapy among various  
219 patients' groups (Table 3).

220 We then evaluated the impact of timing administration of different agents on 30-day mortality.  
221 We found that patients who died within 30 days were less likely to be transfused with  
222 convalescent plasma within 1 day of COVID-19 diagnosis (which likely occurs 2-3 days after  
223 symptom onset) than patients who survived (1% vs 7%,  $p=0.04$ ; Supplemental Table 1). Giving  
224 convalescent plasma to patients later than 3 days after diagnosis did not make any difference in  
225 mortality (Supplemental Table 1). In contrast to what was observed for convalescent plasma, the  
226 later corticosteroids were administered, the greater the benefit. There was a trend toward a

227 greater reduction in 30-day mortality in patients who received corticosteroids later (>5 days after  
228 diagnosis), whereas no difference was observed in patients who received corticosteroids earlier.

## 229 **DISCUSSION**

230 Unlike the previously published studies that compared patients with COVID-19 with and  
231 without cancer, our study included a large number of cancer patients from five different  
232 continents. Our findings demonstrate that cancer is an independent risk factor for increased 30-  
233 day all-cause mortality, which is consistent with a recent large study in the US that also showed  
234 that patients recently receiving cancer treatment had a worse outcome.<sup>19</sup> Furthermore, this higher  
235 mortality rate in cancer patients seems to be driven by patients with lung cancer and patients with  
236 hematologic malignancies, a finding that is consistent with prior literature.<sup>8,9</sup> The mortality rate  
237 in the patients with solid tumors other than lung cancer was not different from the mortality rate  
238 in the non-cancer patients. Most of the other independent risk factors that we identified for 30-  
239 day mortality after a diagnosis of COVID-19 have also been commonly reported as risk factors  
240 for mortality in previous studies of COVID-19 in cancer and non-cancer patients.<sup>2-13</sup> In addition  
241 to a higher 30-day mortality rate, the cancer patients in our study had a more complicated course  
242 after discharge from the hospital; specifically, they more frequently required supplemental  
243 oxygen and readmission within 30 days after COVID-19 diagnosis.

244 The presentation pattern of cancer patients with COVID-19 was different to that of non-cancer  
245 patients. Cancer patients seemed to be less symptomatic. This could be related to the fact that  
246 cancer patients tended to be older, with fewer inflammatory cells (neutrophils and lymphocytes),  
247 and more often on corticosteroids. Levels of inflammatory biomarkers were also higher in  
248 patients with cancer, particularly D-dimer, ferritin, and pro-calcitonin.

249 On multivariate analysis, the only therapeutic agent that independently decreased 30-day all-  
250 cause mortality in both cancer patients and non-cancer patients was remdesivir. Upon further  
251 analysis, remdesivir was found to further decrease mortality in patients with pneumonia and mild  
252 hypoxia who were receiving low-flow oxygen ( $\leq 6$  liters per minute) and not in patients with  
253 severe advanced pneumonia who were receiving high-flow oxygen and/or ventilatory support. In  
254 a large multicenter prospective randomized placebo-controlled trial (ACTT-1) evaluating  
255 remdesivir in 1062 patients with COVID-19 pneumonia, this agent was found to be associated  
256 with a quicker recovery than placebo.<sup>14</sup> In a further subgroup analysis, remdesivir was found to  
257 significantly reduce the time to recovery and 28-day mortality in patients who were on low-flow  
258 oxygen at baseline but not in patients who were on mechanical ventilation or extracorporeal  
259 membrane oxygenation at baseline.<sup>14</sup> Hence, the results of this large prospective randomized  
260 study, particular the results of the subgroup analysis, are consistent with our findings.

261 In a meta-analysis that examined four large prospective randomized trials, remdesivir was shown  
262 to be associated with reduced 14-day mortality and reduced need for mechanical ventilation,<sup>20</sup>  
263 which also supports our analysis.

264 In contrast, the World Health Organization (WHO)-- sponsored multinational Solidarity Trial of  
265 COVID-19 hospitalized patients who were randomly assigned to either remdesivir (2750  
266 patients) or standard of care (2708 patients) showed no difference in overall 28-day mortality.<sup>21</sup>  
267 However, in two large meta-analyses that each examined more than 13,000 COVID-19 patients  
268 from randomized and non-randomized studies, including the WHO randomized trial, remdesivir  
269 was associated with a significant improvement in the 28-day recovery rate.<sup>22,23</sup> Furthermore, in a  
270 large study evaluating treatments and outcomes among cancer patients with COVID-19,  
271 remdesivir alone was significantly associated with a lower 30-day all-cause mortality rate than

272 other treatments (including high-dose corticosteroids and tocilizumab).<sup>4</sup> In addition, in a large  
273 multicenter matched controlled study involving mostly noncancer patients, Mozaffari E et al.  
274 demonstrated that remdesivir, was significantly effective in reducing mortality in patients on  
275 low-flow oxygen but not patients with advanced disease on high-flow oxygen and ventilator  
276 support.<sup>24</sup> More recently a prospective randomized, double blind, placebo-controlled study  
277 (involving mainly non-cancer patients) showed that early initiation of remdesivir prevents  
278 progression to severe COVID-19.<sup>25</sup>

279 Therefore, the cumulative data in the literature do support our finding that remdesivir in all  
280 patients (cancer and non-cancer patients) improves outcome and may reduce mortality in patients  
281 with COVID-19, particularly in patients with moderate pneumonia who are receiving low-flow  
282 oxygen. Such patients are in stage II of the three-stage COVID-19 classification previously  
283 proposed by Siddiqi et al.<sup>26</sup> In that classification, stage I is mild illness and high-level viral  
284 replication that all patients go through and most (>80%) recover from. It is during this stage,  
285 where the new antiviral agents (Ritonavir – Boosted Nirmatrelvir and Molnupiravir) were found  
286 to be highly effective in reducing the risks of hospitalization and death among high risk patients  
287 with COVID-19.<sup>27,28</sup> Stage II is moderate pneumonia, which includes early hypoxia necessitating  
288 low-flow oxygen. Patients with stage II COVID-19 benefit from early remdesivir since viral  
289 replication continues in association with host inflammatory response in accordance with our  
290 data, the literature, and the Siddiqi et al therapeutic model. Stage III is the hyperinflammatory  
291 phase with severe pneumonia and extrapulmonary system manifestations. Patients with disease  
292 that has progressed into this hyperinflammatory late stage with severe pneumonia and hypoxia  
293 requiring high-flow oxygen and ventilatory support do not seem to benefit from remdesivir or  
294 other antiviral therapy but could benefit from anti-inflammatory agents such as corticosteroids.

295 The use of corticosteroids (dexamethasone 6 mg/day) was shown in a large randomized open-  
296 label study conducted in the United Kingdom to be associated with reduced 28-day mortality,  
297 particularly in patients requiring oxygen supplementation and invasive ventilation who receive  
298 corticosteroids after 7 days from the onset of symptoms.<sup>18</sup> Subsequently, two meta-analyses of  
299 several prospective randomized trials demonstrated that corticosteroid use was significantly  
300 associated with a decrease in COVID-19 mortality.<sup>29,30</sup> In our study, we found that if  
301 corticosteroids were started more than 5 days after the PCR diagnosis of COVID-19, there was a  
302 trend towards a reduction in 30-day COVID-19 mortality compared to starting corticosteroids  
303 earlier. Five days after diagnosis by PCR testing would possibly be equivalent to 7 days after the  
304 onset of symptoms since the average time from symptom onset to PCR diagnosis has been  
305 estimated to be 2 to 3 days.<sup>31</sup> Furthermore, by multivariate analysis and upon further  
306 subanalysis (Table 3), remdesivir was found to improve outcome independently of the effect of  
307 steroids.

308 With regard to convalescent plasma treatment, multivariate analyses from our study did not show  
309 any overall benefit. This finding is consistent with a meta-analysis of randomized controlled  
310 trials comparing convalescent plasma to standard of care.<sup>17</sup> However, when convalescent plasma  
311 was given very early after diagnosis (within 1 day of COVID-19 diagnosis, which is estimated to  
312 be around 3 days after symptom onset), this intervention was associated with a significant  
313 reduction of COVID-19-related 30-day mortality compared to the late intervention. Several  
314 studies have shown that early transfusion (within 3 days of hospital admission) of high-titer  
315 plasma may be associated with an improved clinical outcome of COVID-19.<sup>15,16,32,33</sup>

316 The lack of benefit noted in several studies of convalescent plasma could be related to delayed  
317 administration of convalescent plasma, in the advanced hyperinflammatory stages of COVID-19,

318 rather than administration in the early stage when viral replication is at its highest and  
319 neutralizing antibodies in convalescent plasma could be most effective, as previously noted by  
320 Siddiqi et al., early during the infection.<sup>15-18,20-23,26</sup>

321 Our study has several limitations. First, the retrospective design precluded complete assessment  
322 of disease progression in the outpatients, which limited their input into the general study.  
323 Second, some non-cancer centers contributed data only on their hospitalized patients who were  
324 likely sicker. This may have biased the data towards a higher rate of hospitalization among non-  
325 cancer patients and made the data more heterogeneous. In addition, the predominance of  
326 symptomatic patients (87%) might also limit our evaluation of the impact of cancer in the whole  
327 picture of the disease. Third, there were differences in responses to COVID-19 from one  
328 geographic area to another. Patients diagnosed with COVID-19, may have been treated  
329 differently according to specific national guidelines. For example, the 30-day all-cause mortality  
330 rate was lower at centers in the United States than at centers in Latin America or Asia. This  
331 could have been related to the accessibility or early initiation of some interventions in the United  
332 States, such as remdesivir or convalescent plasma, which made data more heterogeneous. We did  
333 not evaluate the accessibility and timing of interventions in the treating facilities. Last, this study  
334 was conducted prior to the introduction of COVID vaccines and included patients who were not  
335 vaccinated and who were infected by early variants which limits the generalizability of our  
336 results to contemporary COVID-19 patients.

337 In conclusion, this is the largest multicenter worldwide study comparing cancer patients to non-  
338 cancer patients with COVID-19. In this study, although the limited effect size, underlying  
339 malignancy was found to be an independent risk factor for a higher 30-day all-cause COVID-19  
340 mortality, with lung cancer and hematologic malignancies associated with the highest risks for



341 poor outcome. Finally, remdesivir stood out as the only therapeutic agent independently  
342 associated with decreased 30-day mortality, particularly in patients on low-flow oxygen.  
343 Corticosteroids tended to be most useful if given more than 5 days after COVID-19 diagnosis.  
344 The role of these therapeutics and their timing of administration should be verified in larger  
345 studies, especially in cancer patients, who tend to have a higher degree of immunosuppression,  
346 which may lead to prolongation of the viral phase.

347

348

349 **Contributors**

350 IR, RH, AMC were responsible for study conception, protocol design, writing of the first draft  
351 and coordinating the manuscript. RH, NM, TD, HD, BS, AB, RS, AFC, EG, AB, NM, NH, SS,  
352 TD, YEVK, SF, PAH, JB, FK, BG, TJ, EYG, HT, NRA, MY, CCRG, MP. NA. RDR, SMA,  
353 RED, TM, KI, RH, RAN, AGG, CTP, DGL, MS, FT, AEM, and AMC were responsible for data  
354 collection at their respective sites. YJ designed the statistical analysis plan, analyzed the data,  
355 developed the figures and the tables. IR, RH, HD, YJ, VS, AEM, and AMC had access to all the  
356 data and were responsible for overall project and data management. All authors had full access to  
357 the study data and had final responsibility for the decision to submit for publication. All authors  
358 were responsible for critical review of drafts and approval of the final manuscript.”

359

360 **Data sharing**

361 The study protocol, statistical analysis plan, lists of deidentified individual data, generated tables  
362 and figures will be made available upon request by qualified scientific and medical researchers  
363 for legitimate research purposes. Requests should be sent to [achaftari@mdanderson.org](mailto:achaftari@mdanderson.org) and  
364 [yijiang@mdanderson.org](mailto:yijiang@mdanderson.org). Data will be available on request for 6 months from the date of  
365 publication. Investigators are invited to submit study proposal requests detailing research  
366 questions and hypotheses in order to receive access to these data.

367

368 **Declaration of interests**

369 We declare no competing interests.

370 **Funding** National Cancer Institute, National Institutes of Health

371 Table 1. Comparing COVID-19 patients with and without cancer

Characteristic	Without Cancer (n=2851) N (%)	With Cancer (n=1115) N (%)	p-value
<b>Demographic and baseline clinical characteristics</b>			
Age (years), median (range)	50 (18-100)	61 (18-100)	< .0001
Sex, male	1335 (47)	506 (45)	0.41
Race/ethnicity			< .0001
White	720/2674 (27)	534/916 (58)	
Black	517/2674 (19)	155/916 (17)	
Hispanic	547/2674 (20)	178/916 (19)	
Asian	275/2674 (10)	33/916 (4)	
Middle Eastern	63/2674 (2)	3/916 (0.3)	
Other	552/2674 (21)	13/916 (1)	
Prior pulmonary disorders	431/2064 (21)	275/1017 (27)	< .001
COPD/bronchiolitis obliterans	175/2054 (9)	75 (7)	0.07
Asthma	178 (6)	106 (10)	< .001
Obstructive sleep apnea	98/2054 (5)	89/948 (9)	< .0001
History of heart failure	240/2036 ( )	85/1098 (8)	< .001
History of hypertension	1020/2837 (36)	546/1110 (49)	< .0001
History of diabetes mellitus	659/2837 (23)	299/1104 (27)	0.01
Current or previous smoker	348/2055 (17)	409/1066 (38)	< .0001
Corticosteroid treatment within 2 weeks prior to COVID-19 diagnosis	40/1041 (4)	189/1097 (17)	< .0001
<b>Presenting symptoms</b>			
Cough	981/1061 (92)	813/1102 (74)	< .0001
Fever	685/1061 (65)	505/1102 (46)	< .0001
Shortness of breath	698/1061 (66)	498/1102 (45)	< .0001
Chest pain	508/1061 (48)	387/1102 (35)	< .0001
Headache	100/1061 (9)	66/1102 (6)	0.003
Gastrointestinal symptoms	133/1061 (13)	80/1102 (7)	< .0001
Loss of smell	148/1061 (14)	104/1102 (9)	0.001
Loss of taste	84/1061 (8)	58/1102 (5)	0.013
ICU admission	78/1061 (7)	55/1102 (5)	0.022
	225/1846 ( )	141/1100 (13)	0.62
<b>Abnormal laboratory values</b>			
ANC < 0.5 K/ $\mu$ L	2/1434 (0.1)	30/419 (7)	< .0001
ALC < 0.5 K/ $\mu$ L	487/1537 (32)	225/463 (49)	< .0001
Platelet count < 100 K/ $\mu$ L	187/1446 (13)	151/387 (39)	< .0001
Hemoglobin < 10 g/dL	437/1533 (29)	283/601 (47)	< .0001
D-dimer, median (range), mcg/ml	1.51 (0.04-735.0)	1.95 (0.25-93.24)	0.013
Ferritin, median (range), ng/ml	823 (1.10-89672)	1015 (1.5-100001)	< .0001
Procalcitonin, median (range), ng/ml	0.21(0.009-163.5)	0.25(0-101.8)	0.008
IL-6, median (range), pg/ml	61 (0-5001)	44 (0-7525)	0.13
<b>Imaging findings</b>			

New infiltrates	151/622 (24)	138/424 (33)	0.003
Ground-glass opacities	487/622 (78)	287/425 (68)	< .0001
Peripheral distribution of infiltrates	253/622 (41)	60/347 (17)	< .0001
<b>Outcomes</b>			
Co-infection after COVID-19 diagnosis	158/1994 (8)	116/1066 (11)	0.006
Multi-organ failure	130/1052 ()	135/1096 ()	0.98
Thrombotic complication	56/1048 (5)	48/1072 (5)	0.36
Discharged on supplemental oxygen among hospitalized patients	90/776 ()	75/438 (17)	0.007
Hospital re-admission within 30 days of COVID-19 diagnosis			< .0001
No	667/806 (83)	318/481 (66)	
Yes	60/806 (7)	63/481 (13)	
Stayed in hospital (throughout 30 days)	79/806 (10)	100/481 (21)	
Death within 30 days of COVID-19 diagnosis	226 (8)	122/1115 (11)	0.003

372

373

374

375

Abbreviations: COPD=Chronic obstructive pulmonary disease; ANC=Absolute neutrophil count; ALC=Absolute lymphocyte count; IL-1=interleukin 1; IL-6=Interleukin 6; COVID-19=Coronavirus disease 2019; NA=Not applicable.

376 Table 2. 30-Day mortality among different groups of cancer patients with COVID-19

377 a) Cancer type

Patient group	No. of patients	No. (%) who died within 30 days*
<b>Hematologic malignancy</b>	<b>283</b>	<b>37 (13)</b>
Transplant within 1 year of COVID-19 diagnosis	15	2 (13)
Lymphoma or myeloma	164	19 ( )
Lymphocytic leukemia (ALL/CLL)	44	6 (14)
Myelocytic leukemia	62	8 (13)
<b>Solid tumor†</b>	<b>632</b>	<b>47 (7)</b>
Lung cancer	64	14 (22)
Metastatic non-lung cancer solid tumor	261	17 (7)
Non-metastatic non-lung cancer solid tumor	307	16 (5)

Notes:

† Patients with missing metastasis data were excluded from the analysis.

**\*30-day mortality comparisons:**

- 1) Lung cancer vs metastatic non-lung cancer solid tumor:  $p < 0.001$
- 2) Lung cancer vs non-metastatic non-lung cancer solid tumor:  $p < 0.0001$
- 4) Hematologic malignancy vs lung cancer:  $p = 0.07$
- 5) Hematologic malignancy vs non-lung cancer solid tumor:  $p < 0.001$
- 6) None of the above significant differences detected remained significant in multivariable analysis of 30-day mortality in cancer patients (Figure 3A)

378

379

380 b) Cancer status and treatment

381

Variable	30-Day mortality		p-value
	No	Yes	
	(n=993) N (%)	(n=122) N (%)	
Cancer status			0.10
Being treated initially	342/906 (38)	31/97 (32)	
Remission	338/906 (37)	32/97 (33)	
Refractory/relapse	226/906 (25)	34/97 (35)	
Chemotherapy within one year prior to COVID-19 diagnosis	428/983 (44)	57/120 (48)	0.41
Transplant within one year prior to COVID-19 diagnosis	11/968 (1)	2/122 (2)	0.65
Immunotherapy within 6 months prior to COVID-19 diagnosis	46/757 (6)	5/63 (8)	0.58
Radiotherapy within 6 months prior to COVID-19 diagnosis	96/982 (10)	13/118 (11)	0.67

382

383

384 Table 3. Comparing Mortality in Patients Treated with Remdesivir Alone or with Steroids for COVID-19.

Patients groups	Outcome	Remdesivir and steroids	Remdesivir alone	<i>p</i> -value
All patients	30-Day death	62/370 (16.8%)	/65 (18.5%)	0.74
Patients with Hypoxia	30-Day death	58/336 (17.3%)	10/53 (18.9%)	0.77
With low-flow oxygen	30-Day death	3/43 (7%)	0/8 (0%)	>.99
With high-flow oxygen	30-Day death	5/18 (27.8%)	6/19 (31.6%)	0.8
On ventilation at diagnosis	30-Day death	26/146 (17.8%)	7/30 (23.3%)	0.48

385

386

387

388

389 Supplemental Table 1. Timing of administration of convalescent plasma and corticosteroids as COVID-19  
 390 treatment and 30-day mortality

391  
 392

Treatment and timing of initiation in relation to COVID-19 diagnosis	Alive N/n (%)	Dead N/n (%)	<i>p</i> -value
<b>Convalescent plasma</b>			
≤ 1 day	14/196 (7)	1/88 (1)	0.04
> 1 days	182/196 (93)	87/88 (99)	
≤ 2 days	49/196 (25)	17/88 (19)	0.3
> 2 days	147/196 (75)	71/88 (81)	
≤ 3 days	80/196 (41)	37/88 (42)	0.9
> 3 days	116/196 (59)	51/88 (58)	
<b>Corticosteroids</b>			
≤ 3 days	594/789 (75)	131/165 (79)	0.3
> 3 days	195/789 (25)	34/165 (21)	
≤ 4 days	633/789 (80)	139/165 (84)	0.2
> 4 days	156/789 (20)	26/165 (16)	
≤ 5 days	665/789 (84)	147/165 (89)	0.1
> 5 days	4/789 (16)	18/165 (11)	
≤ 6 days	700/789 (89)	153/165 (93)	0.1
> 6 days	89/789 (11)	/165 (7)	

393 Note: Diagnosis of COVID-19 by PCR occurs around 2-3 days after onset of symptoms.

394  
 395

396 **Figure Legends:**

397

398 Figure 1. Kaplan-Meier mortality curves of COVID-19 patients with and without cancer  
399 (N=3956).

400

401 Figure 2. Independent predictors of 30-day mortality of COVID-19 patients by multivariable  
402 logistic regression analysis (N=2349).

403

404 Figure 3. Independent predictors of 30-day mortality of COVID-19 patients with cancer (A) and  
405 without cancer (B) by multivariable logistic regression analysis.

406

407

408

409

410

411

412



413 **Acknowledgments**

414  
415 We thank all the investigators, MD Anderson Cancer Network, and the Data-Driven  
416 Determinants for COVID-19 Oncology Discovery Effort (D3CODE) Team at The University of  
417 Texas MD Anderson Cancer Center for assistance in study development and data extraction.

418  
419 We thank Ms. Meena Medepalli and Mr. Joel Cox from the MD Anderson Cancer Network -  
420 External Research at The University of Texas MD Anderson Cancer Center for their support in  
421 coordinating the cancer network sites for protocol participation.

422  
423 We thank Mr. Joseph P. Thomas at The University of Texas MD Anderson Cancer Center for his  
424 assistance with data capture in REDCap, Kris Weaver for data quality review, Sheri Rivera for  
425 REDCap build, Regulatory team for the fast activation, Toby and her team for assistance in  
426 resolving IT issues with site EMR.

427  
428 We thank Anastasia Turin and Drew Goldstein from Syntropy Technologies LLC, Burlington,  
429 MA for interfacing with the Syntropy platform: Palantir Foundry. “Foundry” is Syntropy’s fully-  
430 managed, cloud-based software-as-a-service for governing, structuring, and harmonizing real-  
431 world data to empower health systems and their collaborators to derive insights from that data.  
432 Editorial assistance was provided by Stephanie P Deming, Research Medical Library at MD  
433 Anderson. This assistance was funded by The University of Texas MD Anderson Cancer Center.

434  
435 We thank Ms. Salli Saxton and Ms Christine Cobb at The University of Texas MD Anderson  
436 Cancer Center for helping with the submission of the manuscript.

437  
438 **Funding/Support:** This research is supported by the National Institutes of Health/National  
439 Cancer Institute under award number P30CA016672, which supports the MD Anderson Cancer  
440 Center Clinical Trials Office.

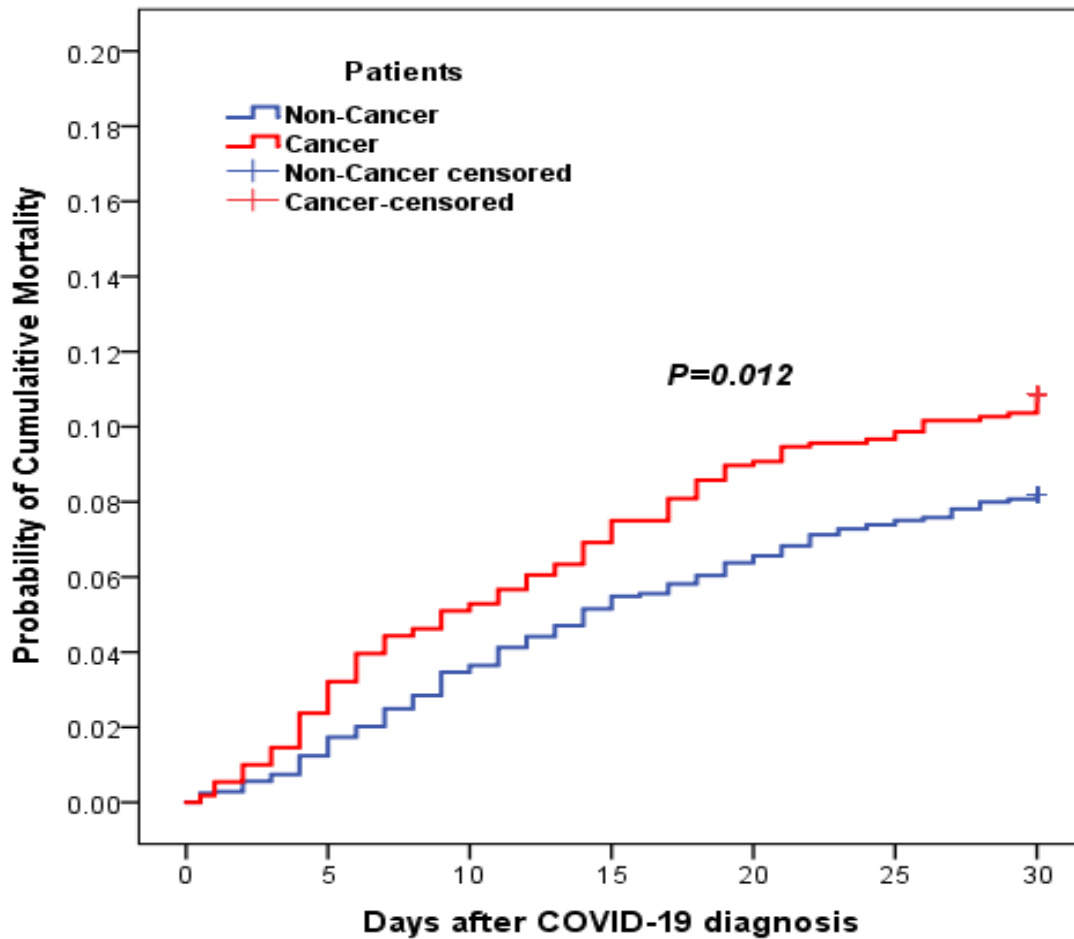
441  
442 **Role of the Funder/Support:** The funders had no role the design and conduct of the study;  
443 collection, management, analysis, and interpretation of the data; preparation, review, or approval  
444 of the manuscript; and decision to submit the manuscript for publication.

445  
446  
447  
448

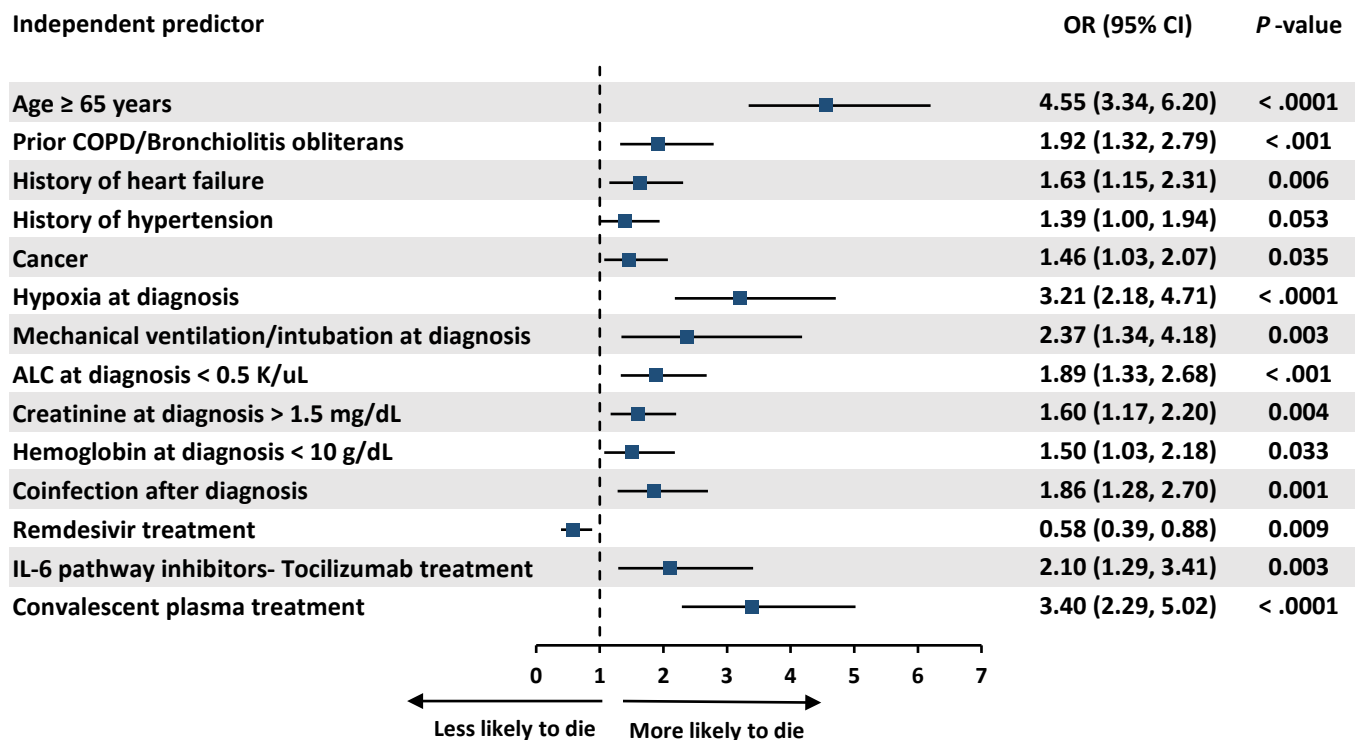
## 449 References

- 450
- 451 1. COVID-19 Map - Johns Hopkins Coronavirus Resource Center  
452 <https://coronavirus.jhu.edu/map.html> (accessed April 29, 2021).
- 453 2. Zhou F, Yu T, Du R, et al. Clinical course and risk factors for mortality of adult inpatients with  
454 COVID-19 in Wuhan, China: a retrospective cohort study. *Lancet* 2020; **395**(10229): 1054-62.
- 455 3. Kuderer NM, Choueiri TK, Shah DP, et al. Clinical impact of COVID-19 on patients with cancer  
456 (CCC19): a cohort study. *Lancet* 2020; **395**(10241): 1907-18.
- 457 4. Rivera DR, Peters S, Panagiotou OA, et al. Utilization of COVID-19 Treatments and Clinical  
458 Outcomes among Patients with Cancer: A COVID-19 and Cancer Consortium (CCC19) Cohort Study.  
459 *Cancer Discov* 2020; **10**(10): 1514-27.
- 460 5. He W, Chen L, Chen L, et al. COVID-19 in persons with haematological cancers. *Leukemia* 2020;  
461 **34**(6): 1637-45.
- 462 6. Albiges L, Foulon S, Bayle A, et al. Determinants of the outcomes of patients with cancer  
463 infected with SARS-CoV-2: results from the Gustave Roussy cohort. *Nat Cancer* 2020; **1**(10): 965.
- 464 7. Robilotti EV, Babady NE, Mead PA, et al. Determinants of COVID-19 disease severity in patients  
465 with cancer. *Nat Med* 2020; **26**(8): 18-23.
- 466 8. Lee LY, Cazier JB, Angelis V, et al. COVID-19 mortality in patients with cancer on chemotherapy  
467 or other anticancer treatments: a prospective cohort study. *Lancet* 2020; **395**(10241): 1919-26.
- 468 9. Mehta V, Goel S, Kabarriti R, et al. Case Fatality Rate of Cancer Patients with COVID-19 in a New  
469 York Hospital System. *Cancer Discov* 2020; **10**(7): 935-41.
- 470 10. Tian J, Yuan X, Xiao J, et al. Clinical characteristics and risk factors associated with COVID-19  
471 disease severity in patients with cancer in Wuhan, China: a multicentre, retrospective, cohort study.  
472 *Lancet Oncol* 2020; **21**(7): 893-903.
- 473 11. Lunski MJ, Burton J, Tawagi K, et al. Multivariate mortality analyses in COVID-19: Comparing  
474 patients with cancer and patients without cancer in Louisiana. *Cancer* 2021; **7**(2): 266-74.
- 475 12. Sun L, Sanjna S, Le A, et al. Rates of COVID-19-related Outcomes in Cancer compared to non-  
476 Cancer Patients. *medRxiv* 2020.
- 477 13. Ruthrich MM, Giessen-Jung C, Borgmann S, et al. COVID-19 in cancer patients: clinical  
478 characteristics and outcome-an analysis of the LEOSS registry. *Ann Hematol* 2021; **100**(2): 383-93.
- 479 14. Beigel JH, Tomashek KM, Dodd LE, et al. Remdesivir for the Treatment of Covid-19 - Final Report.  
480 *N Engl J Med* 2020; **383**(19): 1813-26.
- 481 15. Salazar E, Christensen PA, Graviss EA, et al. Significantly Decreased Mortality in a Large Cohort of  
482 Coronavirus Disease 2019 (COVID-19) Patients Transfused Early with Convalescent Plasma Containing  
483 High-Titer Anti-Severe Acute Respiratory Syndrome Coronavirus 2 (SARS-CoV-2) Spike Protein IgG. *Am J*  
484 *Pathol* 2021; **191**(1): 90-107.
- 485 16. Libster R, Perez Marc G, Wappner D, et al. Early High-Titer Plasma Therapy to Prevent Severe  
486 Covid-19 in Older Adults. *N Engl J Med* 2021; **384**(7): 610-8.
- 487 17. Janiaud P, Axfors C, Schmitt AM, et al. Association of Convalescent Plasma Treatment With  
488 Clinical Outcomes in Patients With COVID-19: A Systematic Review and Meta-analysis. *JAMA* 2021.
- 489 18. Recovery CG, Horby P, Lim WS, et al. Dexamethasone in Hospitalized Patients with Covid-19. *N*  
490 *Engl J Med* 2021; **384**(8): 693-704.
- 491 19. Chavez-MacGregor M, Lei X, Zhao H, Scheet P, Giordano SH. Evaluation of COVID-19 Mortality  
492 and Adverse Outcomes in US Patients With or Without Cancer. *JAMA Oncol* 2021.
- 493 20. Shrestha DB, Budhathoki P, Syed NI, Rawal E, Raut S, Khadka S. Remdesivir: A potential game-  
494 changer or just a myth? A systematic review and meta-analysis. *Life Sci* 2021; **264**: 118663.
- 495 21. W. H. O. STC, Pan H, Peto R, et al. Repurposed Antiviral Drugs for Covid-19 - Interim WHO  
496 Solidarity Trial Results. *N Engl J Med* 2021; **384**(6): 497-511.

- 497 22. Rezagholizadeh A, Khiali S, Sarbakhsh P, Entezari-Maleki T. Remdesivir for treatment of COVID-  
498 19; an updated systematic review and meta-analysis. *Eur J Pharmacol* 2021; **897**: 173926.
- 499 23. Lai CC, Chen CH, Wang CY, Chen KH, Wang YH, Hsueh PR. Clinical efficacy and safety of  
500 remdesivir in patients with COVID-19: a systematic review and network meta-analysis of randomized  
501 controlled trials. *J Antimicrob Chemother* 2021.
- 502 24. Mozaffari E, Chandak A, Zhang Z, et al. Remdesivir treatment in hospitalized patients with  
503 COVID-19: a comparative analysis of in-hospital all-cause mortality in a large multi-center observational  
504 cohort. *Clin Infect Dis* 2021.
- 505 25. Gottlieb RL, Vaca CE, Paredes R, et al. Early Remdesivir to Prevent Progression to Severe Covid-  
506 19 in Outpatients. *N Engl J Med* 2021.
- 507 26. Siddiqi HK, Mehra MR. COVID-19 illness in native and immunosuppressed states: A clinical-  
508 therapeutic staging proposal. *J Heart Lung Transplant* 2020; **39**(5): 405-7.
- 509 27. Mahase E. Covid-19: Pfizer's paxlovid is 89% effective in patients at risk of serious illness,  
510 company reports. *BMJ* 2021; **375**: n2713.
- 511 28. Jayk Bernal A, Gomes da Silva MM, Musungaie DB, et al. Molnupiravir for Oral Treatment of  
512 Covid-19 in Nonhospitalized Patients. *N Engl J Med* 2021.
- 513 29. W. H. O. REAfc-TWG, Sterne JAC, Murthy S, et al. Association Between Administration of  
514 Systemic Corticosteroids and Mortality Among Critically Ill Patients With COVID-19: A Meta-analysis.  
515 *JAMA* 2020; **324**(13): 1330-41.
- 516 30. Siemieniuk RA, Bartoszko JJ, Ge L, et al. Drug treatments for covid-19: living systematic review  
517 and network meta-analysis. *BMJ* 2020; **370**: m2980.
- 518 31. Kucirka LM, Lauer SA, Laeyendecker O, Boon D, Lessler J. Variation in False-Negative Rate of  
519 Reverse Transcriptase Polymerase Chain Reaction-Based SARS-CoV-2 Tests by Time Since Exposure. *Ann*  
520 *Intern Med* 2020; **173**(4): 262-7.
- 521 32. Liu STH, Lin HM, Baine I, et al. Convalescent plasma treatment of severe COVID-19: a propensity  
522 score-matched control study. *Nat Med* 2020; **26**(11): 1708-13.
- 523 33. Klassen SA SJ, Johnson PW, Carter RE, Wiggins CC, Shoham S, Grossman BL, Henderson JP,  
524 Musser J, Salazar E, Hartman WR, Bouvier NM, Liu STH, Pirofski L-A, Baker SE, Helmond N, Wright, RS,  
525 Fairweather D, Bruno KA, Wang Z, Paneth NS, Casadevall A, Joyner ML. The Effect of convalescent  
526 plasma therapy on COVID-19 patient mortality: systematic review and meta-analysis. *Mayo Clinic*  
527 *Proceedings* 2021; **96**.
- 528

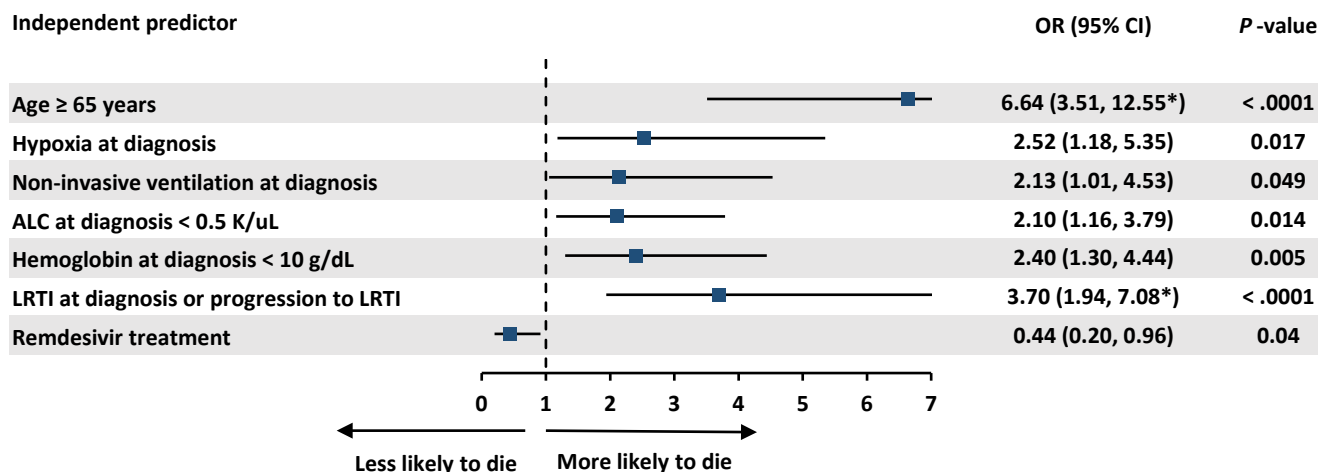


Day since COVID-19 diagnosis	<b>0</b>	<b>1</b>	<b>2</b>	<b>3</b>	<b>4</b>	<b>5</b>	<b>6</b>	<b>7</b>	<b>8</b>	<b>9</b>	<b>10</b>	
Cancer patients at risk (n)	1107	1105	1101	1096	1091	1081	1072	1064	1059	1057	1052	
Non-Cancer patients at risk (n)	2849	2842	2841	2833	2828	2814	2800	2792	2779	2769	2752	
Day since COVID-19 diagnosis		<b>11</b>	<b>12</b>	<b>13</b>	<b>14</b>	<b>15</b>	<b>16</b>	<b>17</b>	<b>18</b>	<b>19</b>	<b>20</b>	
Cancer patients at risk (n)		1050	1046	1042	1039	1033	1027	1027	1021	1016	1012	
Non-Cancer patients at risk (n)		2747	2734	2726	2718	2706	2697	2695	2688	2682	2673	
Day since COVID-19 Diagnosis			<b>21</b>	<b>22</b>	<b>23</b>	<b>24</b>	<b>25</b>	<b>26</b>	<b>27</b>	<b>28</b>	<b>29</b>	<b>30</b>
Cancer patients at risk (n)			1011	1007	1006	1006	1005	1003	1000	1000	999	998
Non-Cancer patients at risk (n)			2668	2661	2653	2649	2646	2643	2641	2635	2630	2628

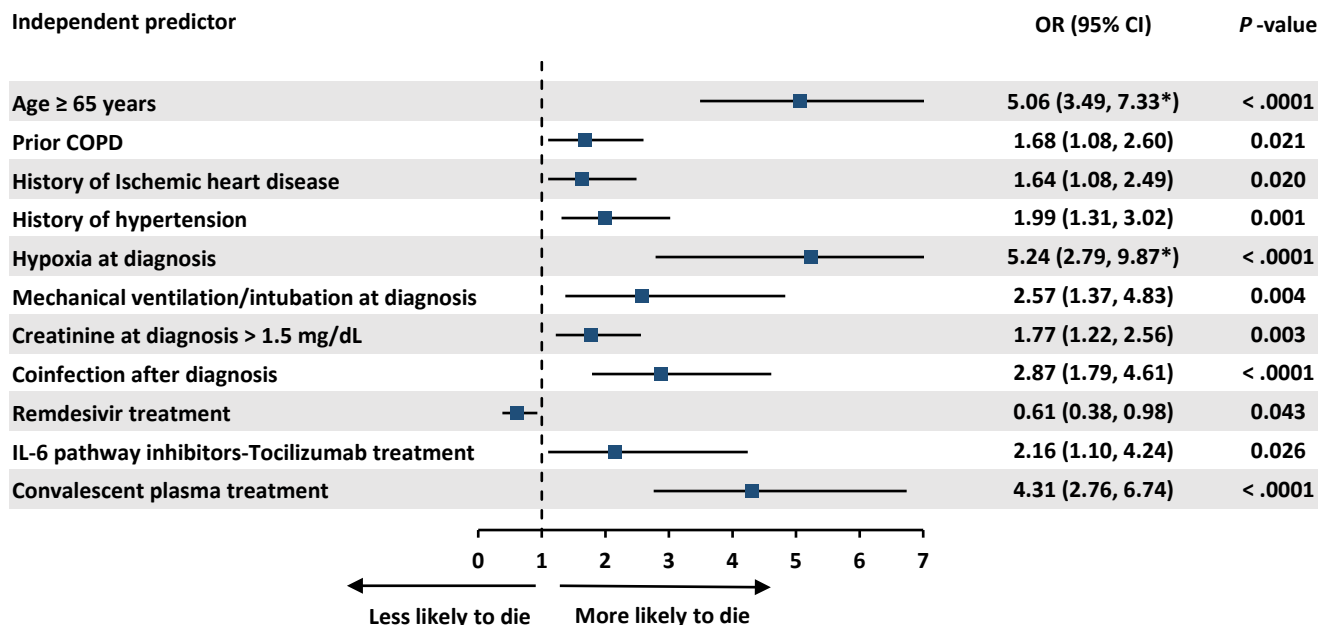


Abbreviation: COPD=Chronic Obstructive Pulmonary Disease; ALC=Absolute Lymphocyte Count; IL-6=Interleukin 6;  
 OR=Odds Ratio; 95% CI= 95% Confidence Interval.

### A) Cancer patients (N=557)



### B) Non-Cancer patients (N=1777)



Abbreviation: ALC=Absolute Lymphocyte Count; LRTI=Lower Respiratory Tract infection; COPD=Chronic Obstructive Pulmonary Disease; IL-6=Interleukin 6; OR=Odds Ratio; 95% CI= 95% Confidence Interval.

Note\* The upper bound of 95% confidence interval of the odds ratio is not shown in the figure due to the limit of the maximum bound of X-axis.